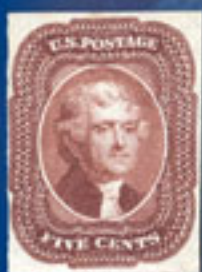


THE "PAUL" COLLECTION OF QUALITY UNITED STATES SINGLES



Daniel F. Kelleher Auctions
LLC
Tuesday, May 17, 2016

DANBURY, CT
AUCTION 684

The Only American Philatelic Auction House with Offices on Three Continents
Hong Kong • London • USA



The “Paul” Collection

Tuesday, May 17, 2016, at 10:00 A.M.

United States

Postmasters’ Provisionals1001-1005
1847 Issue1006-1012
1851 Issue1013-1035
1857 Issue1036-1064
1875 Reprints of the 1857 Issue1065-1072
1861-1866 Issue1073-1096
1867 Grilled Issues1097-1118
1875 Re-issue of the 1861-1866 Issues1119-1128
1869 Pictorial Issue1129-1154
1870-1888 Bank Note Co. Issues.1155-1223
1890 Issue1224-1236
1893 Columbian Issue1237-1258
1894-1898 Bureau Issues1259-1302
1898 Trans-Mississippi Issue1303-1310
1901 Pan-American Issue1311-1316
1902-1908 Regular and Commemorative Issues.1317-1348
1908-1910 Washington-Franklin Issue, DL Watermark.1349-1371
1909 Bluish Paper Issue1372-1380
1909 Commemorative Issues.1381-1386
1910-1911 Washington-Franklin Issue, SL Watermark.1387-1404
1913-1915 Panama-Pacific Issue.1405-1412
1912-1919 Washington-Franklin Issues1413-1492
1918-1923 Issues.1493-1511
1922-1925 Regular Issue1512-1522
1923-1940 Issues.1523-1563

The “Paul” Collection

Tuesday, May 17, 2016

Beginning at 11:00 A.M.

At our offices in Danbury, CT

Lots 1001-1563

Quality United States Singles

United States

Postmasters' Provisionals



1001



1002

- 1001 (★)** New York, N.Y., 5¢ black on bluish (9X1), position 32, unused without gum, three generously large margins, sharp color impression and signature, Very Fine; with 2004 P.F. certificate. Scott \$1,500.

Estimate \$600 - 800

- 1002 (★)** New York, N.Y., 5¢ black on bluish, without signature (9X1e), position 29, showing double transfer, unused without gum, sharp and fresh example, Very Fine; with 1974 & 2007 P.F. certificates. Scott \$3,500.

Estimate \$1,500 - 2,000



1003



1004

- 1003 (★)** Providence, R.I., 5¢ gray black (10X1), unused without gum, impressive right sheet margin single with brilliant color, Very Fine; with photocopy of 1985 P.F. certificate for sheet/12, from which this stamp was taken. Scott \$225.

Estimate \$150 - 200

- 1004 (★)** Providence, R.I., 5¢ gray black (10X1), vertical pair, unused without gum, delightful multiple with extremely intense color, Very Fine; with 1998 P.S.E. certificate for block/12, from which this pair was taken. Scott \$725.

Estimate \$400 - 600

- 1005 ★** Providence, R.I., 5¢ gray black and 10¢ gray black, se-tenant (10X2a), top right corner margin pair, full o.g., the 10¢ stamp with paper adhering to the gum, sharp impression, choice position piece displayed within huge margins, Extremely Fine to Superb; with 2006 P.F. certificate. Scott \$2,000.

Estimate \$1,500 - 2,000



1005

1847 Issue



1006



1007



1008



1009



1010

- 1006 ○ **5¢ red brown (1)**, left margin single, red grid cancel, rich, bright, sharp color and impression, three huge margins, touching along bottom, F.-V.F. lovely and pleasing example; with 1983 P.F. certificate. Scott \$400. Estimate \$250 - 350
- 1007 ○ **5¢ grayish brown (1a)**, light blue cancel, remarkably clear unmistakable color and impression displayed within large margins and a complimentary and pleasing postmark, Very Fine; with 1983 P.F. certificate. Scott \$1,040. Estimate \$500 - 750
- 1008 ○ **5¢ orange brown (1b)**, red New York grid cancel, rich exuberant color and impression upon lily-white paper and large margins, Very Fine to Extremely Fine; with 2008 P.S.E. certificate graded VF-XF 85. SMQ **VF-XF 85**; \$1,150. Estimate \$600 - 800
- 1009 ○ **5¢ brown orange (1d)**, black grid cancellation, fabulous example of this terribly elusive brown orange shade, with four generous margins, Extremely Fine; with 2011 P.F. certificate. Scott \$1,025. Estimate \$750 - 1,000
- 1010 ○ **10¢ black (2)**, lightened pen cancels, large margins at bottom and left, F.-V.F.; with 1980 P.F. certificate. Scott \$550. Estimate \$300 - 400

1875 Reproductions of the 1847 Issue



1011



1012

- 1011 (★) **5¢ red brown, Reproduction (3)**, without gum as issued, brilliant and sharp color and impression, Very Fine; with 2005 P.F. certificate. Scott \$850. Estimate \$500 - 750
- 1012 (★) **10¢ black, Reproduction (4)**, bottom margin single, without gum as issued, razor sharp impression upon stark white paper, Extremely Fine a true beauty which would enhance the finest of collections; with 1998 P.F. certificate. Scott \$1,050. Estimate \$1,000 - 1,500

1851 Issue



- 1013 ○ **1¢ blue, type Ia (6)**, Pos. 100L4 showing a nice portion of the bottom selvage, New York town cancellation, fabulous example with exuberant rich color and razor sharp impression; a rare stamp particularly in flawless condition, F.-V.F.; with 1990 and 2010 P.F. certificates. Scott \$11,000. Estimate \$5,000 - 7,500



1014



1015



1016



1017

- 1014 ○ **1¢ blue, type II (7)**, neat black town cancellation, magnificent example with outstanding color and impression; a JUMBO margined showpiece, Extremely Fine to Superb; with 2003 P.F.C. and 2010 P.S.E. certificate graded XF-SUP 95J. Scott \$135. SMQ **XF-SUP 95J**; \$1,275. Estimate \$750 - 1,000
- 1015 ○ **1¢ blue, type II (7)**, plate 3, 19 FEB c.d.s., lovely bright and fresh, Very Fine to Extremely Fine; with 1988 P.F. certificate. Scott \$400. Estimate \$250 - 350
- 1016 ○ **1¢ blue, type III (8)**, manuscript cancel, deep rich color and impression with large margins at top and bottom which displays clearly the type, Fine; with 2002 P.S.E. certificate for strip of three which this is the right stamp. Scott \$1,250. Estimate \$500 - 750
- 1017 ○ **1¢ blue, type IIIa (8A)**, attractive manuscript penstroke cancellation, select example of type IIIa with large balanced margins and awesome color; just a great stamp, Extremely Fine to Superb; with 1977 P.F. certificate. Scott \$425. Estimate \$400 - 600



1018



1019



1020

- 1018** ○ **1¢ blue, type IIIa (8A)**, pair, Pos. 39-40L1E showing nice portion of next stamp at left and wide selvage showing center line at right, blue grid cancellations, extraordinary multiple of type IIIa, with incredibly wide margins; among the most impressive pairs obtainable, Extremely Fine, Ex: Chapin, Ex: Hansen; with 1964 and 2003 P.F.C.'s and 2008 P.S.E. certificate. Scott \$2,450. Estimate \$2,500 - 3,500
- 1019** ○ **1¢ blue, type IV (9)**, position 72R1L, deeply etched impression with bright color upon white paper within unimaginably large margins, Extremely Fine to Superb, a true condition rarity; with encapsulated P.S.E. certificate graded XF-SUP 95J. SMQ **XF-SUP 95J**; \$925. Estimate \$600 - 800
- 1020** ○ **1¢ blue, type IV (9)**, pair, grid cancels, large margins showing portions of three adjoining stamps, Very Fine to Extremely Fine; with 2008 P.S.E. certificate. Scott \$210. Estimate \$200 - 300



1021



1022



1023



1024

- 1021** (★) **3¢ orange brown, type II (10A)**, unused without gum, rich unmistakable orange brown color, Fine, *scarce and undervalued*; with 2005 P.F. certificate. Scott \$1,250. Estimate \$400 - 600
- 1022** (★) **3¢ orange brown, type II (10A)**, unused without gum, premium example with outstanding rich color; accompanying certificate identifies the stamp as Scott #10, but that was before they indicated differences between types I and II; faint horizontal crease, otherwise F.-V.F.; with 1987 P.F. certificate. Scott \$1,300. Estimate \$400 - 600
- 1023** ○ **3¢ orange brown, type II, stitch watermark variety (10A var.)**, black grid cancellation, unbelievable color and impression; a handsome well margined example showing interesting stitch watermark along the top edge of the stamp, Extremely Fine; with 2005 P.F. certificate. Scott \$160. Estimate \$200 - 300
- 1024** ○ **3¢ orange brown, type II (10A)**, right margin single, town cancel, sharp color and impression, Very Fine; with 2007 P.F. certificate. Scott \$160. Estimate \$150 - 200



1025



1026



1027



1028

- 1025** ○ **3¢ brownish carmine, type I (11)**, lightly struck town cancellation, immense margins and wonderful brownish carmine shade, Superb; with 1999 P.F. certificate. Scott \$18. Estimate \$150 - 200
- 1026** ★ **3¢ dull red, type II (11A)**, Pos. 4R2L, o.g., barest trace of hinge (appears never hinged), impressive top sheet margin single, with lovely soft and fresh color; the accompanying certificate identifies this as Scott #11, but it is Scott #11A type II stamp showing recut inner lines, Fine; with 1996 P.S.E. certificate. Scott \$275. Estimate \$150 - 200
- 1027** ○ **3¢ claret, type II (11A)**, blue grid cancel, rich unmistakable claret color, nicely impressed within huge boardwalk margins showing portions of all four surrounding stamps, Extremely Fine to Superb a showpiece; with 2007 P.F. certificate graded XF-SUP 95J. SMQ **XF-SUP 95J**; \$375. Estimate \$300 - 400
- 1028** ○ **3¢ dull red, type II (11A)**, light face free cancel, sharp brilliant color and impression within nicely balanced large margins, Extremely Fine; with 2007 P.S.E. certificate graded XF 90. SMQ **XF 90**; \$90. Estimate \$100 - 150

Rare Mint 5 Cent Red Brown



- 1029** ★ **5¢ red brown (12)**, o.g., bright razor sharp impression upon white paper with nice to large margins; faint creasing, otherwise Very Fine, an incredibly rare stamp to find unused, yet alone with original gum; with 1979 P.F. certificate. Scott \$30,000. Estimate \$7,500 - 10,000



1030



1031



1032



1033

- 1030** ○ **10¢ green, type I (13)**, barest trace of cancel, large abundant margins with a sharp clear impression, a true premium example, Very Fine to Extremely Fine; with 1990 P.F. certificate. Scott \$900.
Estimate \$1,000 - 1,500
- 1031** (★) **10¢ green, type II (14)**, unused without gum, deep rich proof-like impression and color, Very Fine, the catalog value for unused stamps is undervalued; with 1985 P.F. certificate. Scott \$1,800. Estimate \$750 - 1,000
- 1032** ○ **10¢ green, type II (14)**, town postmark, rich color and impression surrounded by huge margins, Extremely Fine to Superb; with 2005 P.F. certificate. Scott \$160. Estimate \$200 - 300
- 1033** ○ **10¢ green, type III (15)**, town postmark, bright color and impression within boardwalk margins, Extremely Fine to Superb; with 2005 P.S.E. certificate graded XF-SUP 95. SMQ **XF-SUP 95**; \$650. Estimate \$400 - 600



- 1034** ○ **10¢ green, type IV (16)**, position 76L1, light cancel, deep rich color and impression displaying a clear sharp recut within large margins, Very Fine to Extremely Fine; with 1999 A.P.S. certificate. Scott \$1,650. Estimate \$1,500 - 2,000



- 1035** ○ **12¢ gray black (17)**, pen mark in the bottom left corner and neat black town cancellations, stunning showpiece margins and Jet-Black color; among the most impressive World Class GEMS we have ever encountered, Extremely Fine to Superb; with 2008 P.S.E. certificate graded XF-SUP 95J. Scott \$250. SMQ **XF-SUP 95J**; \$2,000. Estimate \$1,500 - 2,000

1857 Issue



1036



1037



1038



1039

- 1036 ○ **1¢ blue, type I (18)**, delicate rich color and impression within large margins that clearly displays type I attributes, Very Fine; with 2002 P.F. certificate. Scott \$550. Estimate \$400 - 600
- 1037 ○ **1¢ blue, type Ic (19b)**, "E" relief, likely position 89R4, town postmark, rich impression and color within incredibly balanced margins, Very Fine; with 1997 P.F. certificate. Scott \$2,500. Estimate \$1,500 - 2,000
- 1038 ★ **1¢ blue, type II (20)**, plate 2, full o.g., rich razor sharp impression and color, Very Fine; with 1983 P.F. certificate for block from which this is the top left stamp. Scott \$900. Estimate \$500 - 750
- 1039 ○ **1¢ blue, type II (20)**, plate 2, position 7R4, town c.d.s., deep rich color, Very Fine; with 2006 P.S.E. certificate. Scott \$275. Estimate \$200 - 300



- 1040 ★ **1¢ blue, type III (21)**, small part o.g., deep prooflike impression and color, Fine and rare; with 1979 P.F. certificate. Scott \$17,500. Estimate \$4,000 - 6,000



1041



1042



1043

- 1041** ○ **1¢ blue, type IIIa (22)**, very lightly cancelled at upper left, at first glance appears unused, radiant and sharp color and impression, within large balanced margins and complete perforations, at first glance its richness displays the freshness of an unused example, Choice Very Fine; with 1991 P.S.E. certificate. Scott \$500.
Estimate \$300 - 400
- 1042** ○ **1¢ blue, type IV (23)**, position 81L1L, inverted transfer, October 1857 postmark, nicely impressed and displaying clearly the inverted transfer, large portion of adjoining stamp at bottom, Fine; with 1981 A.P.S. certificate. Scott \$2,500.
Estimate \$1,000 - 1,500
- 1043** ○ **1¢ blue, type Va (24)**, plate 5, 1859 town c.d.s., lovely rich color within large balanced margins, Very Fine; with 2006 P.F. certificate. Scott \$300.
Estimate \$200 - 300



1044



1045



1046

- 1044** (★) **3¢ rose, type I (25)**, unused without gum, bright rich color, showing portion of adjoining stamp at bottom, V.G.-Fine; with 2004 P.S.E. certificate. Scott \$950.
Estimate \$300 - 400
- 1045** ○ **3¢ brownish carmine, type I (25)**, position 61R8, left margin single, shifted to the right showing full wing margin at left and part of frameline, c.d.s., magnificent showpiece, Very Fine for this; with 2000 A.P.S. certificate. Scott \$200.
Estimate \$150 - 200
- 1046** ○ **3¢ dull red, type III (26)**, black town cancellation, astounding top quality stamp with gorgeous rich color and razor sharp impression, Extremely Fine to Superb; with 2009 P.S.E. certificate graded XF-SUP 95. Scott \$9. SMQ **XF-SUP 95**; \$275.
Estimate \$200 - 300



- 1047** ○ **5¢ brick red, type I (27)**, light c.d.s., full complete vibrant color and impression within ample margins that is complimented by full and complete perforations, Fine; with 2006 P.S.E. certificate. Scott \$1,600.
Estimate \$600 - 800



1048

1049

1050

1051

1052

1053

- 1048 ○ **5¢ red brown, type I (28)**, lightly struck "1859" year date cancellation, luscious rich shade; a nicely centered example of this often misidentified color shade; reperforated at bottom, not mentioned on accompanying certificate, otherwise Fine; with clear 1976 P.F. certificate. Scott \$1,050. Estimate \$300 - 400
- 1049 ○ **5¢ Indian red, type I (28A)**, light face free cancel, deep rich unmistakable Indian red color, Fine and attractive, often misidentified and missing from most collections; with 2002 P.S.E. certificate. Scott \$3,500. Estimate \$1,000 - 1,500
- 1050 (★) **5¢ brown, type I (29)**, unused without gum, deep rich brown color, F.-V.F. for this; with 1983 P.F. certificate. Scott \$1,750. Estimate \$500 - 750
- 1051 ★ **5¢ orange brown, type II (30)**, o.g., previously hinged, delicate but sharp orange brown color amidst incredibly balanced large margins that clear the design completely, so uncommon to this issue, choice Very Fine to Extremely Fine; with 2004 P.F. certificate. Scott \$1,250. Estimate \$1,200 - 1,800
- 1052 (★) **5¢ deep orange brown, type II (30)**, unused without gum, deep rich color, a much scarcer shade than the catalog indicates, Very Fine; with 2008 P.F. certificate. Scott \$500. Estimate \$300 - 400
- 1053 ★ **5¢ brown, type II (30A)**, o.g., previously hinged, rich brown color and sharp impression with nice margins, Very Fine; with 2003 P.S.E. certificate. Scott \$2,200. Estimate \$1,000 - 1,500



1054



1055



1056

- 1054 ○ **10¢ green, type II (32)**, c.d.s. postmark, radiant color and impression within near-perfect centering, Extremely Fine to Superb; with 2008 P.S.E. certificate graded XF-SUP 95. SMQ **XF-SUP 95**; \$3,050. Estimate \$2,000 - 3,000
- 1055 ○ **10¢ green, type III (33)**, black and red cancels, deeply etched impression and color within well balanced margins, a lovely example, Very Fine to Extremely Fine; with 1986 P.F. certificate. Scott \$200. Estimate \$200 - 300
- 1056 ○ **10¢ green, type IV, stitch watermark (34 var.)**, position 74L1 (recut at top), glowing red town cancel, Very Fine, a scarce variety that is not recorded in the Scott catalog; with 2004 P.F. certificate. Scott \$2,675+. Estimate \$1,500 - 2,000



1057



1058



1059



1060



1061

- 1057** ★ **10¢ green, type V (35)**, o.g., radiant bright color and impression with pleasing margins around, Very Fine to Extremely Fine; with 2002 P.F. certificate. Scott \$225. Estimate \$300 - 400
- 1058** ○ **10¢ green, type V (35)**, extremely light black town cancellation, extremely wide margins and lively bright color; a terrific stamp, Extremely Fine to Superb; with 1986 P.F. certificate. Scott \$65. Estimate \$150 - 200
- 1059** ○ **12¢ black, plate I (36)**, large Boston "PAID" in grid cancellation, flawless example with evenly balanced margins and alluring rich color; rarely found in such beautiful condition, Extremely Fine; with 2003 and 2009 P.F. certificates. Scott \$360. Estimate \$400 - 600
- 1060** ★ **12¢ black, plate III (36B)**, traces of o.g., vivid sharp impression upon white paper, well centered for this difficult small margined issue, Very Fine; with 1970 P.F. certificate. Scott \$700. Estimate \$300 - 400
- 1061** ○ **12¢ black, plate III (36B)**, red grid cancel, deep jet black color and detailed impression within near-perfect centering, an almost impossible stamp to find in this premium quality, Choice Very Fine; with 1988 P.F. certificate. Scott \$315. Estimate \$300 - 400



1062



1063

- 1062** ★ **24¢ gray lilac (37)**, o.g., previously hinged, delicate sharp color and impression, equal margins with jumbo at left, Very Fine; with 1993 P.F. certificate. Scott \$1,500. Estimate \$1,000 - 1,500
- 1063** ★ **30¢ orange (38)**, o.g., previously hinged, fiery rich color within balanced large margins so uncommon on this tightly bordered issued, Very Fine to Extremely Fine; with 1995 P.F. certificate. Scott \$2,150. Estimate \$1,500 - 2,000



- 1064** ★ **90¢ blue (39)**, o.g., previously hinged, deep rich color and impression, oversized balanced margins, Very Fine to Extremely Fine, a true premium example of the high value issue; with 1984 P.F. certificate. Scott \$3,000. Estimate \$3,000 - 4,000

1875 Reprints of the 1857 Issue



1065 (★) 1¢ bright blue, Reprint (40), without gum as issued, rich proof like impression within nice margins, Very Fine, *only 3846 issued*; with 1994 P.S.E. certificate. Scott \$575.

Estimate \$400 - 600

1066 (★) 3¢ scarlet, Reprint (41), without gum as issued, rich fiery color with prooflike impression and incredible centering for one of the toughest issues as far as margins and centering go, Choice Very Fine, *only 479 issued*; with 2006 P.S.E. certificate graded VF 80, 2002 PF certificate. SMQ **VF 80**; \$5,250.

Estimate \$3,500 - 5,000



1067 (★) 5¢ orange brown, Reprint (42), without gum as issued, deep rich color and impression nicely placed within its borders which almost always touches the design, Very Fine, *only 878 issued*; with 2006 P.F. certificate. Scott \$1,200.

Estimate \$750 - 1,000

1068 (★) 10¢ blue green, Reprint (43), without gum as issued, bright color and impression within well placed margins, F.-V.F., *only 516 issued*; with 2007 P.S.E. certificate graded F-VF 75 and 1983 & 2002 PF certificates. Scott \$2,750. SMQ **F-VF 75**; \$3,150.

Estimate \$2,000 - 3,000



1069 (★) 12¢ greenish black, Reprint (44), without gum as issued, deeply etched impression and jet black color within generous margins, Very Fine, a premium example of a rare stamp, *only 489 issued*; with 2006 P.F. certificate. Scott \$3,000.
 Estimate \$2,500 - 3,500



1070 (★) 24¢ blackish violet, Reprint (45), without gum as issued, brilliant color and impression, delightfully balanced margins showing a good portion of the imprint captured in right margin, Very Fine to Extremely Fine, *only 479 issued*; with 2001 P.F. certificate. Scott \$3,250.
 Estimate \$2,500 - 3,500

The only example we recall having seen with the imprint in margin.

1071 (★) 30¢ yellow orange, Reprint (46), without gum as issued, fiery orange color on bright white paper, scissor separated as often, F.-V.F., *only 480 issued*; with 1980 & 2001 P.F. certificates. Scott \$3,250.
 Estimate \$2,000 - 3,000



1072 (★) 90¢ deep blue, Reprint (47), without gum as issued, deep blue color on white paper, prooflike impression; irregular perfs at left, F.-V.F., *only 454 issued*; with 1974 P.F. certificate. Scott \$4,000.
 Estimate \$2,500 - 3,500

1861-1866 Issue



1073



1074



1075



1076

- 1073 ★ 3¢ brown rose, First Design (56 (65-E15h)),** o.g., previously hinged, august issue color and impression within nicely centered margins, Very Fine; with 2002 P.S.E. certificate. Scott \$550. Estimate \$300 - 400
- 1074 ○ 10¢ dark green, First Design (62B),** extremely light black cancellation, outstanding example of this tough stamp, with outstanding rich color and razor sharp impression; rarely found completely sound with such a wonderfully light cancel, Very Fine; with 1992 P.F. certificate. Scott \$1,600. Estimate \$1,000 - 1,500
- 1075 ★ 1¢ blue (63),** o.g., barest trace of hinge, choice example with impeccably fresh color; a beauty, Very Fine; with 2010 P.S.E. certificate. Scott \$300. Estimate \$250 - 350
- 1076 ○ 1¢ blue and dark blue (63, 63b),** neat black cancellations, attractive examples offered as one lot showing the distinct difference between the common blue shade and the scarcer dark blue shade, Fine; 63 with 2006 P.F. certificate, 63b with 2005 P.F. certificate. Scott \$900. Estimate \$300 - 400



1077



1078



1079



1080



1081

- 1077 ○ 3¢ rose pink (64b),** blue "Baltimore" town cancellation, remarkably fresh and choice example with outstanding centering, Extremely Fine; with 2004 P.F. certificate. Scott \$165. Estimate \$200 - 300
- 1078 ★★ 3¢ brown red shade (65 var.),** o.g., never hinged, extraordinary example of the tough brown red shade, with fantastic rich color and huge margins; unlisted in Scott Specialized catalog in never hinged condition; a pristine mint stamp, Very Fine; with 2001 P.F. certificate. Scott \$275 for "hinged". Estimate \$500 - 750
- 1079 (★) 3¢ lake (66),** stuck down on small piece, a rare stamp in need of some TLC that has become stuck from being kept in a humid environment, V.G.; with 1994 P.F. certificate for this stamp before it became stuck; stating o.g., previously hinged. Scott \$2,000 for o.g. Estimate \$300 - 400
- 1080 ○ 5¢ buff (67),** "PAID" in grid cancellation, gorgeous top quality example with strong color; completely sound and attractive 5 cent buff, Very Fine; with 2001 P.F.C. and 2007 P.S.E. certificate. Scott \$875. Estimate \$600 - 800
- 1081 ○ 5¢ brown yellow (67a),** neat black town cancellation, desirable example of this terribly difficult brown yellow shade; tiny ink backstamp bleed to the front at bottom mentioned on accompanying certificate; reperfected at left not mentioned, otherwise Fine; with 2002 P.S.E. certificate. Scott \$1,100. Estimate \$300 - 400



1082



1083



1084

- 1082 ★ **10¢ blue green (68a)**, mount disturbed o.g., generous margins and extremely intense color, Very Fine; with 2005 P.F. certificate. Scott \$1,400. Estimate \$400 - 600
- 1083 ○ **10¢ yellow green (68)**, red town cancellation, spectacular example with vivid color, Extremely Fine; with 1987 P.F. certificate. Scott \$70. Estimate \$150 - 200
- 1084 ○ **12¢ black (69)**, gorgeous blue target cancellation, fantastic top quality example with wonderfully well balanced margins and incredible depth of color, Extremely Fine; with 1987 P.F.C. and 2007 P.F. certificate graded XF 90. Scott \$110. SMQ **XF 90**; \$375. Estimate \$300 - 400



1085



1086



1087



1088

- 1085 ○ **24¢ red lilac (70)**, black grid cancellation, impressive example with lively rich color, Very Fine; with 1997 P.F. certificate. Scott \$300. Estimate \$200 - 300
- 1086 ○ **24¢ brown lilac (70a)**, light black target cancellation, splendid example of the often misidentified brown lilac shade, F.-V.F.; with 1999 P.S.E. certificate. Scott \$325. Estimate \$150 - 200
- 1087 ○ **24¢ violet (70c)**, bold blue "Cincinnati" town cancellation, lovely example of the scarce violet shade with strong color, much more intense than normally encountered; a completely sound stamp, scarce thus as this stamp almost always comes faulty from one degree to another, Fine; with 2003 P.F. certificate. Scott \$2,275. Estimate \$1,000 - 1,500
- 1088 ○ **24¢ grayish lilac (70d)**, neat black cancellation, impressive top quality and completely fault free example of this rare shade, that is almost never encountered completely sound and attractive like this stamp is, F.-V.F.; with 1999 P.F. certificate describing this stamp as a genuine Scott #70d in the grayish lilac shade. Scott \$3,000. Estimate \$1,000 - 1,500

- 1089 ○ **30¢ orange (71)**, partial strike of large Boston "PAID" in grid cancellation, plus just a touch of red cancel at bottom, large margined example with breathtaking color, a gorgeous showpiece, Extremely Fine; with 2007 P.S.E. certificate. Scott \$190. Estimate \$250 - 350



1089



1090



1091



1092



1093

- 1090** (★) **2¢ black (73)**, unused without gum, lovely example with precise centering and vivid color, Extremely Fine; with 1977 P.F. certificate. Scott \$140. Estimate \$100 - 150
- 1091** ○ **5¢ red brown (75)**, nice strike of large Boston "PAID" in grid cancellation, plus a partial strike of beautiful red transit postmark, outstanding GEM QUALITY example with the most impressive rich color nicely complimented by the two interesting cancels; a perfectly centered stamp deserving placement in the finest collection as we have never encountered another #75 coming close to the quality of this unbelievable stamp; simply unbelievable, Extremely Fine to Superb; with 1988 and 2002 P.F. certificates. Scott \$475. Estimate \$1,000 - 1,500
- 1092** ○ **5¢ brown (76)**, neat black cancellation, wonderful top quality example with bold rich color; a select stamp, Extremely Fine; with 2010 P.S.E. certificate graded XF 90. Scott \$120. SMQ **XF 90**; \$475. Estimate \$350 - 500
- 1093** ○ **15¢ black (77)**, light black quartered cork cancellation, remarkably fresh and choice stamp with mouthwatering rich color, Extremely Fine; with 1998 P.S.E. certificate. Scott \$180. Estimate \$300 - 400



1094



1095



1096

- 1094** ○ **24¢ lilac (78)**, neat black cancellation, generous margins and lovely soft shade, simply gorgeous, Very Fine to Extremely Fine; with 2001 P.F. certificate. Scott \$350. Estimate \$250 - 350
- 1095** ○ **24¢ grayish lilac (78a)**, beautiful black cancellation, remarkable top quality example with superior centering and awesome color; a GEM QUALITY example of the confusing and often misidentified grayish lilac shade, Extremely Fine; with 2005 P.S.E. certificate graded XF 90. Scott \$425. SMQ **XF 90**; \$1,000. Estimate \$750 - 1,000
- 1096** ★ **24¢ gray (78b)**, o.g., hinged, a brilliant fresh example with clean clear impression; rarely found completely sound with full original gum; a very impressive stamp, Fine; with 1997 P.F. certificate. Scott \$2,900. Estimate \$1,000 - 1,500

1867 Grilled Issues



1097



1098



1099



1100



1101

- 1097 ★** 3¢ rose, **C. grill (83)**, o.g., hinged, unbelievably fresh and choice example of this terribly elusive C grill, with large margins and lively bright color; a rarity missing from even the most advanced collections, Fine; with photocopy of 1985 P.F. certificate for block/4, from which this rare grilled stamp was taken. Scott \$6,000.
Estimate \$1,000 - 1,500
- 1098 (★)** 2¢ black, **D. grill (84)**, unused without gum, a decent example of this rare stamp; with vivid color and clear impression; only a handful of completely sound examples are known to exist, Fine; with 1980 P.F. certificate. Scott \$6,500.
Estimate \$1,000 - 1,500
- 1099 ○** 3¢ rose, **D. grill (85)**, interesting segmented cork cancellation, extremely fresh and rather attractive example, especially with the desirable cancel, V.G.-Fine; with 1989 P.F. certificate. Scott \$1,050.
Estimate \$200 - 300
- 1100 ○** 3¢ rose, **Z. grill (85C)**, extremely light black cancellation, remarkably fresh example of this scarce 3 cent Z grill; a completely sound and attractive stamp that is rarely found in flawless condition; a wonderful opportunity, Fine; with 2005 P.S.E. certificate. Scott \$3,500.
Estimate \$1,500 - 2,000
- 1101 ○** 12¢ intense black, **Z. grill (85E)**, light black cancellation, desirable example of this notoriously difficult Z grill, with intense color and an extremely light cancel, scarce thus as this stamp almost always is found with a heavy cork cancel, F.-V.F.; with 1989 P.F. certificate. Scott \$2,500.
Estimate \$1,000 - 1,500



1102



1103



1104

- 1102 ○** 1¢ blue, **E. grill, very thin paper variety (86 var.)**, neat target cancellation, rarely offered very thin paper variety with gorgeous rich color; listed but unpriced in Scott Specialized catalog, V.G.-Fine; with 2004 P.F. certificate. Scott \$450 for normal paper.
Estimate \$200 - 300
- 1103 ○** 2¢ black, **E. grill (87)**, black cork cancellation, extremely intense color, very handsome example, F.-V.F.; with 1987 P.F. certificate. Scott \$200.
Estimate \$100 - 150
- 1104 ○** 3¢ rose, **E. grill (88)**, perfect strike of blue target cancellation, outstanding wide margined stamp with superior color; among the most impressive examples you'll ever see, Extremely Fine to Superb; with 2009 P.F. certificate. Scott \$32.
Estimate \$100 - 150



1105



1106

- 1105** ○ **10¢ green, E. grill (89)**, extremely light black cancellation, an unbelievable example of this tough stamp; fantastic well centered amid extremely large margins, with tremendous rich color; why this received a grade of only a 90 is a mystery as this stamp is about as perfect as one could imagine; a most impressive showpiece that would please the most quality conscious collector, Extremely Fine; with 1981 and 1996 P.F.C.'s and 2006 P.S.E. certificate graded XF 90. Scott \$350. SMQ **XF 90**; \$1,100. Estimate \$1,000 - 1,500
- 1106** ○ **12¢ black, E. grill (90)**, neat black target and red transit cancellations, sensational rich color and detailed impression, a beauty, Very Fine to Extremely Fine; with 2006 P.S.E. certificate graded VF-XF 85. Scott \$400. SMQ **VF-XF 85**; \$650. Estimate \$500 - 750

Magnificent and Rare 15 Cent E. Grill



- 1107** ★ **15¢ black, E. grill (91)**, o.g., hinged, incredible example of this extremely rare grilled stamp; Post Office fresh and choice with lovely color of great intensity, F.-V.F.; with 2006 P.F. certificate. Scott \$12,500. Estimate \$5,000 - 7,500



1108



1109



1110



1111



1112

- 1108 ★ 1¢ blue, F. grill (92)**, o.g., hinged, lively fresh shade, a decent example that completely sound and attractive, Fine; with 2000 P.F. certificate. Scott \$3,000. Estimate \$1,000 - 1,500
- 1109 ★ 2¢ black, F. grill (93)**, o.g., lightly hinged, tremendous Black-Jack featuring beautiful centering and oversized margins, with exuberant color; this stamp is rarely found in such magnificent quality, Extremely Fine; with 1989 P.F. certificate. Scott \$450. Estimate \$750 - 1,000
- 1110 ○ 3¢ red, F. grill (94)**, neat target cancellation, remarkable example of this modestly valued stamp with superb color; an extraordinary top quality showpiece, Extremely Fine to Superb; with 197 and 2003 P.F. certificates. Scott \$10. Estimate \$100 - 150
- 1111 (★) 5¢ brown, F. grill (95)**, unused without gum, absolutely stunning example with the best centering you'll ever see on this issue; with dynamite deep rich color and clearly etched impression, Extremely Fine; with 1981 P.F. certificate for block/9, from which this gorgeous stamp was taken, this being the lower right stamp from the block. Scott \$1,300. Estimate \$1,000 - 1,500
- 1112 ○ 10¢ yellow green, F. grill (96)**, black segmented cork cancellation, extremely wide margins and sterling rich shade; a marvelous top quality stamp, Extremely Fine; with 1986 P.F. certificate. Scott \$250. Estimate \$350 - 500



1113



1114

- 1113 ○ 12¢ black, F. grill (97)**, fancy blue grid of dots cancellation, a striking example with razor sharp impression and wonderfully balanced margins; this is without question the most delightful example of this stamp we've encountered, Extremely Fine; with 2008 P.F. certificate. Scott \$270. Estimate \$500 - 750
- 1114 ○ 12¢ black, F. grill (97)**, attractive leaf cancellation, fabulous example with extremely intense color nicely complimented by the pleasing cancel; a beautiful grilled stamp, Very Fine; with 2008 P.S.E. certificate graded VF 80. Scott \$260. SMQ **VF 80**; \$325. Estimate \$250 - 350



1115



1116

1115 (★) **15¢ black, F. grill (98)**, unused without gum, fabulous fresh stamp that is completely sound in all respects, F.-V.F.; with 1981 P.F. certificate. Scott \$1,600. Estimate \$750 - 1,000

1116 ○ **15¢ black, F. grill (98)**, neat black circle of wedges cancellation, a handsome and fresh stamp printed on clean white paper, Very Fine to Extremely Fine; with 1989 P.F. certificate. Scott \$275. Estimate \$300 - 400



1117 ★ **30¢ orange, F. grill (100)**, o.g., hinged, awesome rich color, and full complete grill; a remarkably fresh example of this notoriously difficult mint stamp that is really seen so choice; a marvelous Scott #100 that would be a challenge to duplicate, Fine; with 2004 P.F. certificate. Scott \$8,500. Estimate \$2,000 - 3,000



1118 ○ **90¢ blue, F. grill (101)**, neat black cancellation, desirable 90 cent grilled issue with breathtaking rich color printed on lily white paper; much nicer than normally encountered, F.-V.F.; with 1988 P.F. certificate. Scott \$2,250. Estimate \$1,000 - 1,500

1875 Re-issue of the 1861-1866 Issues

- 1119 (★) **1¢ blue, Re-issue (102)**, unused without gum, extraordinary re-issue with extremely large margins and ravishing rich color; an awesome stamp, Extremely Fine, *only 3,195 reportedly sold*; with 2006 P.S.E. certificate graded XF 90. Scott \$350. SMQ **XF 90**; \$750. Estimate \$600 - 800



- 1120 ★ **2¢ black, Re-issue (103)**, traces of o.g., flawless well margined example with super intense color printed on bright white paper; a completely sound stamp in flawless condition, Very Fine, *only 979 reportedly sold*; with 2006 P.F. certificate. Scott \$3,500 for full o.g. Estimate \$2,500 - 3,500

- 1121 ★ **3¢ brown red, Re-issue (104)**, o.g., lightly hinged, without question, the most impressive example of this issue we have ever had the pleasure to offer at public auction; a desirable large margined stamp with mouthwatering color and detailed impression; how this stamp survived in this quality over the past 141 years is hard to believe; destined for the finest collection, Very Fine to Extremely Fine, *only 465 reportedly sold*; with 1992 and 2003 P.F.C.'s, and with 1992 and 2009 P.S.E. certificates. Scott \$4,000. Estimate \$5,000 - 7,500



- 1122 ★ **5¢ brown, Re-issue (105)**, o.g., hinged, impeccably fresh example with finely detailed impression; scarce in this quality, Fine, *only 672 reportedly sold*; with 2005 P.S.E. certificate. Scott \$2,600. Estimate \$1,500 - 2,000

- 1123 ★ **10¢ green, Re-issue (106)**, o.g., barest trace of hinge, the most pristine example we've ever encountered; a striking top quality re-issue featuring oversized margins and captivating fresh color; a true GEM that would please the most quality conscious collector, Very Fine to Extremely Fine, *only 451 reportedly sold*; with 1991 and 2003 P.F.C.'s, and 2009 P.S.E. certificate graded VF-XF 85. Scott \$3,100. SMQ **VF-XF 85**; \$5,100. Estimate \$5,000 - 7,500





1124 (★) 12¢ black, Re-issue (107), unused without gum, extraordinary top quality example featuring immense margins and remarkably rich color; this fabulous re-issue is worthy of bids well in excess of its ridiculously low catalog value of only \$1,750, Very Fine to Extremely Fine, *only 389 reportedly sold*; with 1984 P.F. certificate. Scott \$1,750.

Estimate \$2,500 - 3,500

1125 (★) 15¢ black, Re-issue (108), unused without gum, absolutely spectacular top quality example with bold prooflike color, a gorgeous Jet-Black shade on bright white paper; this is a marvelous 15 cent re-issue, Very Fine, *only 397 reportedly sold*; with 1985 P.F. certificate. Scott \$2,100.

Estimate \$2,500 - 3,500



1126 ★ 24¢ dark violet, Re-issue (109), o.g., hinged, particularly well centered example of this rare stamp, with captivating color and impression; simply gorgeous, Very Fine, *only 346 reportedly sold*; with 1974 P.F. certificate. Scott \$5,750.

Estimate \$5,000 - 7,500

1127 ★ 30¢ brownish orange, Re-issue (110), disturbed o.g., extraordinary top quality example of this incredibly elusive stamp; with breathtaking rich color and centering that is second to none; this spectacular stamp is among the finest examples in existence, Very Fine to Extremely Fine, *only 346 reportedly sold*; with 1984 P.F. certificate. Scott \$6,000.

Estimate \$6,000 - 8,000



1128 (★) 90¢ blue, Re-issue (111), unused without gum, astounding example of this rarely offered stamp, featuring bold color, large margins and fabulous centering; this matchless GEM is among a handful of GEM quality examples available to collectors and should realize an impressive price, as it never comes this nice, Extremely Fine to Superb, *only 317 reportedly sold*; with 1969 P.F. certificate. Scott \$3,250.

Estimate \$4,000 - 6,000

1869 Pictorial Issue



1129



1130



1131



1132



1133

- 1129 ○ **1¢ buff (112)**, black cancellation, desirable example with exceptional centering, Very Fine to Extremely Fine; with 1994 P.S.E. certificate. Scott \$150. Estimate \$150 - 200
- 1130 ★ **2¢ brown (113)**, o.g., hinged, incredible deep rich color and impression upon bright white paper, Extremely Fine; with P.S.E. encapsulated graded XF 90. Scott \$550. SMQ **XF 90**; \$1,650 XF 90. Estimate \$1,200 - 1,800
- 1131 ★ **2¢ brown (113)**, o.g., small hinge remnant, uniquely appealing bottom margin single showing pane divider arrow in wide selvage; with lively color and sharp detailed impression; a magnificent showpiece, Extremely Fine; with 2009 P.F. certificate. Scott \$550. Estimate \$400 - 600
- 1132 ○ **2¢ brown (113)**, neat black cancellation, handsome well margined example with brilliant fresh color, a beauty, Extremely Fine; with 2007 P.F. certificate. Scott \$85. Estimate \$100 - 150
- 1133 ★★ **3¢ ultramarine (114)**, o.g., never hinged, immaculate stamp in Post Office fresh condition, Fine; with 2008 P.F. certificate. Scott \$250 for hinged. Estimate \$200 - 300



1134



1135



1136

- 1134 ★ **6¢ ultramarine (115)**, disturbed o.g., warm rich color, a fresh and impressive example of this terribly difficult stamp, F.-V.F.; with 2003 P.F. certificate. Scott \$2,750. Estimate \$750 - 1,000
- 1135 ○ **10¢ yellow (116)**, light red and black cancellations, incredible GEM with brilliant fresh color and equally balanced margins; a remarkable stamp, Extremely Fine to Superb; with 1992 P.F.C. and 2008 P.S.E. certificate graded XF-SUP 95. Scott \$125. SMQ **XF-SUP 95**; \$900. Estimate \$750 - 1,000
- 1136 ★ **12¢ green (117)**, redistributed o.g., fabulous centering and lively bright color; a tremendous example, Extremely Fine; with 1987 P.F. certificate. Scott \$1,900. Estimate \$1,000 - 1,500



1137



1138

1137 (★) **15¢ brown & blue, type I (118)**, unused without gum, wonderfully fresh example of this scarce stamp, with sharp detailed impression, V.G.-Fine; with 1980 P.F. certificate. Scott \$3,250. Estimate \$750 - 1,000

1138 (★) **15¢ brown & blue, type II (119)**, unused without gum, among the freshest and most pleasing examples one could imagine, with breathtaking deep colors and choice centering, F.-V.F.; with 2005 P.F. certificate. Scott \$1,150. Estimate \$750 - 1,000



1139 ○ **24¢ green & violet (120)**, neatly struck rosette cancellation, tremendous large margined example with unbelievably fresh color with deep saturated color; this is without question the quintessential example of this difficult stamp, Extremely Fine; with 1988 P.F.C. and 2006 P.F. certificate graded XF 90. Scott \$650. SMQ **XF 90**; \$1,700. Estimate \$1,500 - 2,000



1140 (★) **30¢ ultramarine & carmine (121)**, unused without gum, enormous margined stamp with the most brilliant fresh colors obtainable on this issue; an eye catching and scarce stamp in such flawless condition, F.-V.F.; with 2005 P.F. certificate. Scott \$1,650. Estimate \$1,000 - 1,500



1141 (★) **90¢ carmine & black (122)**, unused without gum, handsome example of this scarce unused stamp, completely sound in all respects with dazzling colors much more intense than normally encountered, Fine; with 1988 P.F. certificate. Scott \$4,000. Estimate \$1,500 - 2,000

1875 Re-issues of the 1869 Pictorial Issue



1142



1143



1144



1145

- 1142 ★** 1¢ buff, 1875 Re-issue (123), large part o.g., decent example of this rather elusive stamp, with fabulous color and razor sharp impression, F.-V.F., 10,000 reportedly sold; with 1995 P.S.E. and 2004 P.F. certificate. Scott \$550 for full o.g. Estimate \$300 - 400
- 1143 ★** 2¢ brown, 1875 Re-issue (124), slightly disturbed o.g., bold rich shade, an attractive example of this tough stamp, a flawless stamp, Fine, 4,755 reportedly sold. Scott \$650. Estimate \$200 - 300
- 1144 (★)** 3¢ blue, 1875 Re-issue (125), unused without gum, magnificent TOP QUALITY example of this rare and terribly undervalued 1875 re-issue, with outstanding centering with generous margins on all sides; just a great stamp, Very Fine to Extremely Fine, only 1,406 reportedly sold; with 1970 and 1988 P.F. certificates. Scott \$2,500. Estimate \$2,500 - 3,500
- 1145 (★)** 6¢ blue, 1875 Re-issue (126), unused without gum, a fabulous representation of this difficult stamp, with enormous margins and warm rich color; this stamp would please the most quality conscious collector of high quality stamps, Extremely Fine, only 2,226 reportedly sold; with 1992 P.F. certificate. Scott \$775. Estimate \$1,000 - 1,500



1146



1147



1148

- 1146 ★** 10¢ yellow, 1875 Re-issue (127), o.g., hinge remnants (pencil mark on gum), fabulous color of great intensity, with large margins and choice centering, Very Fine, only 1,947 reportedly sold; with 1983 P.F. certificate. Scott \$1,650. Estimate \$750 - 1,000
- 1147 (★)** 12¢ green, 1875 Re-issue (128), unused without gum, wonderfully fresh and choice example of this extremely handsome re-issue, F.-V.F., only 1,584 reportedly sold; with 2005 P.F. certificate. Scott \$1,025. Estimate \$750 - 1,000
- 1148 ★** 15¢ brown & blue, Re-issue, type III (129), o.g., lightly hinged, exceedingly fresh and rather attractive example with the most beautiful rich colors we've seen on this issue; a wonderful state of preservation, Very Fine, only 1,981 reportedly sold; with 1992 P.F. certificate. Scott \$1,350. Estimate \$1,000 - 1,500

Extremely Rare 15 Cent Pictorial, Imperf Horizontally



- 1149 ★** **15¢ brown & blue, Re-issue, type III, imperf horizontally (129a)**, o.g., lightly hinged, sensational example of this incredibly attractive philatelic rarity, in a condition almost never encountered on this issue; a pristine stamp featuring luscious rich colors, and choice centering with full long perforations on both sides, scarce thus, since these stamps were cut apart with scissors, finding an example without butchered perforations is a rare occurrence; the example offered here is destined for the finest collection, *Very Fine, less than 100 examples are known to exist*, with 1989 and 2004 P.F. certificates. Scott \$14,000. Estimate \$10,000 - 15,000



- 1150 (★) **24¢ green & violet, 1875 Re-issue (130)**, unused without gum, impeccably fresh and choice example with vivid color and sharp clear impression; with beautiful centering, Very Fine, *only 2,091 reportedly sold*; with 2005 P.S.E. certificate. Scott \$900. Estimate \$1,000 - 1,500



- 1151 (★) **30¢ ultramarine & carmine, 1875 Re-issue (131)**, unused without gum, awesome top quality example with immense margins and prooflike colors printed on bright white paper; an amazing 30 cent Pictorial re-issue, Extremely Fine, *only 1,535 reportedly sold*; with 1981 P.F. certificate. Scott \$1,100. Estimate \$1,500 - 2,000



- 1152 (★) **90¢ carmine & black, 1875 Re-issue (132)**, unused without gum, extremely fresh and choice example of this popular 90 cent Lincoln; a very pleasing and completely flawless stamp, F.-V.F., *only 1,356 reportedly sold*; with 1997 A.P.S. certificate. Scott \$1,500. Estimate \$1,500 - 2,000



1153



1154

- 1153 ★ **1¢ buff, 1880 Re-issue (133)**, disturbed o.g., exceptional example of this often misidentified 1880 re-issue, with lovely soft color, Very Fine to Extremely Fine, *only 5,000 reportedly sold*; with 2006 P.F. certificate. Scott \$325. Estimate \$250 - 350
- 1154 (★) **1¢ brown orange, 1881-82 Re-issue (133a)**, without gum as issued, exquisite rich shade; premium example that is completely sound in all respects, Very Fine, *18,252 reportedly sold*; with 2004 P.F. certificate. Scott \$275. Estimate \$200 - 300

1870-1888 Bank Note Co. Issues



1155



1156



1157

- 1155 (★) **1¢ ultramarine, H. grill (134)**, unused without gum, bright vivid color; a very impressive stamp, Very Fine; with 2006 P.F. certificate. Scott \$700. Estimate \$350 - 500
- 1156 ★ **2¢ red brown, H. grill (135)**, o.g., lightly hinged, handsome example that has brilliant color and detailed impression, F.-V.F.; with 1989 P.F. certificate. Scott \$1,000. Estimate \$500 - 750
- 1157 (★) **3¢ green, H. grill (136)**, unused without gum, deep saturated color, a premium quality example, Very Fine; with 2005 P.F. certificate. Scott \$190. Estimate \$150 - 200



- 1158 ★ **6¢ carmine, H. grill (137)**, disturbed o.g., absolutely gorgeous rich color, a very pleasing example of this rarity, with an easily identifiable grill, Fine; with 2007 P.S.E. certificate. Scott \$5,000. Estimate \$1,500 - 2,000



1159



1160

- 1159 (★) **7¢ vermilion, split H. grill (138 var.)**, unused without gum, wonderfully fresh example with lively bright color; plus it's the desirable "Split Grill" variety, F.-V.F.; with 2006 P.F. certificate. Scott \$1,550. Estimate \$750 - 1,000
- 1160 (★) **10¢ brown, H. grill (139)**, unused without gum, impressive example of this difficult grilled stamp, with lively color and clearly etched impression, F.-V.F.; with 2004 P.F. certificate. Scott \$2,550. Estimate \$1,000 - 1,500

- 1161 ○ **12¢ dull violet, H. grill (140)**, neat black cancellation, absolutely stunning example with beautiful color; a handsome and completely sound stamp with some easily identifiable grill points; flawless example of this rarity, Very Fine; with 1989 P.F. certificate. Scott \$3,600. Estimate \$2,500 - 3,500



- 1162 ★ **15¢ orange, H. grill (141)**, disturbed o.g., among the most spectacular 15 cent grilled banknote issues we've offered; a wonderfully fresh example with strong color and easily identifiable grill, F.-V.F.; with 1977 P.F. certificate. Scott \$7,500.

Estimate \$2,500 - 3,500

- 1163 ○ **24¢ purple, H. grill (142)**, fancy New York foreign mail cancellation, astounding example with particularly choice centering; a beautifully centered stamp with brilliant color; among the few completely sound and attractive examples that are known to exist, Very Fine; with 1993 A.P.S. and 1994 P.F. certificates. Scott \$6,750.

Estimate \$4,000 - 6,000



- 1164 (★) **30¢ black, H. grill (143)**, unused without gum, handsome example of this rare stamp, with deeply saturated color, with clear grill points easily visible; a flawless top quality 30 cent banknote issue, Fine; with 1984 and 1989 P.F. certificates. Scott \$7,500.

Estimate \$3,000 - 4,000

- 1165 ★ **90¢ carmine, H. grill (144)**, disturbed o.g., extremely desirable 90 cent Perry with breathtaking color; a completely sound stamp missing from all but the most advanced U.S. collections, F.-V.F.; with 1974 and 2006 P.F. certificates. Scott \$25,000. Estimate \$7,500 - 10,000





1166



1167



1168



1169



1170

- 1166 ★ **1¢ ultramarine (145)**, disturbed o.g., extremely fresh and pleasing example of this tough stamp, especially with the beautiful centering that this stamp possesses, Very Fine; with 2001 P.F. certificate. Scott \$675.
Estimate \$400 - 600
- 1167 ★ **2¢ red brown (146)**, o.g., barest trace of hinge, wide margined example with heavenly bright color; a stamp that could easily pass as never hinged, Very Fine to Extremely Fine; with 1999 P.F. certificate. Scott \$325.
Estimate \$350 - 500
- 1168 ★★ **3¢ green (147)**, o.g., never hinged, an extraordinary top quality example in a quality rarely found; with brilliant color and detailed impression; a nifty example of this terribly elusive and often misidentified National printing; unlisted in Scott in never hinged condition, Very Fine; with 2003 P.F. certificate. Scott \$225 for hinged.
Estimate \$500 - 750
- 1169 ★ **6¢ carmine (148)**, traces of o.g., incredible color and centering; among the most impressive examples available, Extremely Fine; with 1992 P.F. certificate. Scott \$1,000 for full o.g.
Estimate \$300 - 400
- 1170 ○ **12¢ dull violet (151)**, black cancellation, fresh and choice stamp, F.-V.F.; with 2007 P.F. certificate. Scott \$220.
Estimate \$100 - 150



1171



1172

- 1171 ★ **15¢ bright orange (152)**, o.g., hinged, premium quality example of this notoriously difficult stamp, with riveting fresh color without any trace of the oxidation that tend to plague these stamps; a completely sound stamp in flawless condition, F.-V.F.; with 2004 P.F. certificate. Scott \$3,500.
Estimate \$2,000 - 3,000
- 1172 ★ **24¢ purple (153)**, pretty blue town cancellation, stunning GEM QUALITY example with ravishing rich color, nicely complimented by the colored cancel; a great stamp, Extremely Fine to Superb; with 2004 P.F. certificate. Scott \$235.
Estimate \$400 - 600



- 1173 ★ **30¢ black (154)**, o.g., lightly hinged, handsome credibly scarce 30 cent National bank not co. issue, with deep saturated color and crisp clear impression; this is one of a handful of sound o.g. examples that are known to exist, F.-V.F.; with 2003 P.F. certificate. Scott \$7,500. Estimate \$3,500 - 5,000



- 1174 ★ **90¢ carmine (155)**, o.g., lightly hinged, striking mint example with fiery bright color and clear impression; rarely encountered choice and well centered like this, Very Fine; with 1989 P.F.C. and 2005 P.S.E. certificate. Scott \$5,000. Estimate \$3,500 - 5,000



1175



1176



1177

- 1175 ★ **1¢ ultramarine (156)**, o.g., lightly hinged, appealing high quality stamp with unparalleled bright color, simply gorgeous, Very Fine; with 1998 P.F. certificate. Scott \$225. Estimate \$200 - 300
- 1176 ★★ **2¢ brown (157)**, o.g., never hinged, tremendous wide margined example in a wonderful state of preservation; a wide margined right sheet margin single with wonderful overall freshness, Very Fine; with 1983 and 2007 P.F. certificates. Scott \$350 for hinged. Estimate \$600 - 800
- 1177 ★★ **3¢ green, grilled (158e)**, o.g., never hinged, outstanding example of this scarce grilled stamp, centered much nicer than most other known example; a remarkably fresh stamp in a wonderful choice state of preservation; this stamp is 143 years old and it is as fresh and choice as the very first day it was printed, F.-V.F.; with 2006 P.S.E. certificate graded F-VF 75. Scott \$550 for hinged. Estimate \$600 - 800



1178



1179



1180



1181



1182

- 1178 ★ **6¢ dull pink (159)**, o.g., hinged, desirable example of this terribly undervalued stamp, with warm rich color and lovely eye appeal, Very Fine; with 1987 and 2005 P.F. certificates. Scott \$400. Estimate \$350 - 500
- 1179 ★ **7¢ orange vermilion (160)**, o.g., lightly hinged, attractive stamp featuring incredibly saturated color and full long perforations all around, F.-V.F.; with 1990 P.F. certificate. Scott \$1,150. Estimate \$750 - 1,000
- 1180 ○ **10¢ brown (161)**, faintly cancelled at top, wonderfully fresh stamp that appears to be unused, Very Fine; with 2007 P.F. certificate. Scott \$27. Estimate \$35 - 50
- 1181 ○ **12¢ blackish violet (162)**, pretty blue cancellation, extremely handsome example with gorgeous color, Very Fine; with 1998 P.F. certificate. Scott \$147. Estimate \$150 - 200
- 1182 ○ **15¢ yellow orange (163)**, black grid cancellation, strong color of great intensity, very pretty, Very Fine; with 1989 P.F. certificate. Scott \$160. Estimate \$100 - 150



- 1183 ★ **30¢ gray black (165)**, o.g., lightly hinged, brilliant color and razor sharp impression; an impressive top quality example of this incredibly scarce Continental printing, Very Fine; with 1984 P.F. certificate. Scott \$4,000. Estimate \$3,000 - 4,000



- 1184 ★ **90¢ rose carmine (166)**, o.g., lightly hinged, exquisite bright color, a handsome and extremely fresh example of this tough stamp, F.-V.F.; with 2002 P.S.E. certificate. Scott \$2,250. Estimate \$1,000 - 1,500

1875 Hard Paper Special Printings

1185 (★) **2¢ dark brown, 1875 Special Printing (168)**, without gum as issued, desirable example of this 1875 Special Printing; with beautiful rich color on bright white paper; scissors separated as almost always resulting in clipped perfs at left and bottom, Fine, *57 examples are known to exist*, with 1952 and 1989 P.F. certificates. Scott \$7,250. Estimate \$3,000 - 4,000



1186 (★) **7¢ reddish vermilion, 1875 Special Printing (171)**, without gum as issued, extremely fresh example of this hard paper Special Printing, scissor separated from the sheet as almost always; blue ink stain at bottom left corner, not mentioned on accompanying certificate, otherwise F.-V.F., *approximately 70 examples are known to exist*, with clear 1947 P.F. certificate. Scott \$4,750. Estimate \$1,500 - 2,000

1187 (★) **12¢ dark violet, 1875 Special Printing (173)**, without gum as issued, exemplary example of this rarely offered Special Printing; with dynamite color printed on clean white paper, with fabulous overall freshness, Very Fine, *only 71 known to exist*, with 1980 P.F. certificate. Scott \$6,750. Estimate \$4,000 - 6,000



1188 (★) **24¢ dull purple, 1875 Special Printing (175)**, without gum as issued, desirable and fresh example with warm rich color; scissors separated leaving clipped perforations at right and bottom margins; otherwise a sound example of this elusive stamp, Fine, *only 100 examples are known to exist*, with 1979 P.F. certificate. Scott \$4,000. Estimate \$2,000 - 3,000

1189 (★) **30¢ greenish black, 1875 Special Printing (176)**, without gum as issued, extremely handsome example of this rarely offered Special Printing, with wide margins and captivating color; scissors separated as always resulting in clipped perforations at right and bottom - common to these rare hard paper special printings, F.-V.F., Ex: Heatherington; with 1957 P.F. certificate. Scott \$14,500. Estimate \$6,000 - 8,000





1190



1191



1192

- 1190 ★ **2¢ vermilion (178)**, o.g., lightly hinged, a brilliant fresh stamp in a wonderful state of preservation; ridiculously undervalued, Very Fine; with 1990 P.F. certificate. Scott \$350. Estimate \$300 - 400
- 1191 P **2¢ vermilion, imperf proof on stamp paper (178P5)**, pair, regummed, impressive rich color, rarely found completely sound; previously listed as Scott #178Pa until Scott changed the listing to #178P5 and placed this issue in the proof section of the Specialized catalog, Extremely Fine; with 2007 P.S.E. certificate. Scott \$600. Estimate \$300 - 400
- 1192 ★ **2¢ vermilion, grilled (178c)**, o.g., lightly hinged, unusually choice example with unbelievable color; a handsome top quality showpiece, Very Fine; with 2002 and 2008 P.S.E. certificates. Scott \$900. Estimate \$600 - 800



- 1193 ★ **5¢ blue (179)**, o.g., hinged (pencil mark on gum), handsome example of this incredibly scarce grilled stamp, with luscious rich color; rarely found in completely sound condition, V.G.-Fine; with 2004 P.F. certificate. Scott \$4,500. Estimate \$1,500 - 2,000



1194



1195



1196

- 1194 ★ **1¢ dark ultramarine (182)**, o.g., lightly hinged, attractive example of this tough little stamp, much tougher than its modest catalog value would indicate, Very Fine; with 2000 P.F. certificate. Scott \$225. Estimate \$200 - 300
- 1195 ★ **2¢ vermilion (183)**, o.g., lightly hinged, remarkable example with fabulous bright color and beautiful centering, Extremely Fine; with 1988 P.F. certificate. Scott \$100. Estimate \$200 - 300
- 1196 ○ **2¢ vermilion (183)**, neat black cancellation, fabulous top quality showpiece with the most impressive JUMBO margins we have ever seen on this issue; a remarkable stamp with tremendous appeal, Extremely Fine; with 2010 P.S.E. certificate graded XF 90J. Scott \$5. SMQ **XF 90J**; \$110. Estimate \$100 - 150



1197



1198



1199



1200



1201

- 1197 ★★ 3¢ green (184)**, o.g., never hinged, a tremendous top quality example, with extra large margins and splendid rich color and wonderful overall freshness, Extremely Fine; with 2003 P.F. certificate. Scott \$330. Estimate \$400 - 600
- 1198 ★ 5¢ blue (185)**, o.g., hinged, vivid rich shade, a premium quality fresh stamp, F.-V.F.; with 1998 P.F. certificate. Scott \$450. Estimate \$300 - 400
- 1199 ★ 6¢ pink (186)**, o.g., lightly hinged, unusually choice stamp with warm rich color; a splendid high quality example of this, Very Fine; with 2000 P.F. certificate for block/4, from which this stamp was taken, this being bottom left stamp from the block. Scott \$900. Estimate \$750 - 1,000
- 1200 (★) 10¢ brown, without secret mark (187)**, unused without gum, desirable example of this scarce stamp with lively color and clear impression, F.-V.F.; with 1994 P.S.E. certificate. Scott \$1,100. Estimate \$500 - 750
- 1201 (★) 10¢ brown, with secret mark (188)**, regummed, outstanding rich color, a beauty, Very Fine; with 2004 P.F. certificate. Scott \$625 for no gum. Estimate \$400 - 600



1202



1203



1204

- 1202 ★ 15¢ red orange (189)**, o.g., lightly hinged, unbelievable eye catching example with massive JUMBO margins of epic proportions; a magnificent showpiece with tremendous deep rich color, Extremely Fine, Ex: Westchester collection; with 1983 and 2005 P.F. certificates. Scott \$200. Estimate \$400 - 600
- 1203 ★ 30¢ full black (190)**, o.g., hinged, particularly choice example with striking rich color, a very appealing example, Very Fine; with 2004 P.F.C. and 2005 P.S.E. certificate graded VF-XF 85. Scott \$900. SMQ **VF-XF 85**; \$1,350. Estimate \$1,000 - 1,500
- 1204 ★ 90¢ carmine (191)**, o.g., lightly hinged, splendid example of this tough stamp, with ravishing rich color, just like the very first day it was issued, F.-V.F.; with 1988 P.F. certificate. Scott \$2,000. Estimate \$1,000 - 1,500

1880 Soft Paper Special Printings



- 1205 (★) **7¢ scarlet vermilion, 1880 Special Printing (196)**, without gum as issued, wonderful example of this incredibly rare soft paper Special Printing, with fiery bright color and tremendous eye appeal; a sound stamp without any of the flaws that typically affect this printing, Fine, *only 80 examples are known to exist*, with 2006 P.F. certificate. Scott \$8,000. Estimate \$3,000 - 4,000



- 1206 (★) **12¢ blackish purple, 1880 Special Printing (198)**, without gum as issued, extremely handsome and wonderfully affordable example of this rare 1880 soft paper Special Printing; with very intense color; thin spot, and reperforated at top and left, otherwise F.-V.F., *only 62 examples are known to exist*; with 1966 P.F. certificate. Scott \$11,000. Estimate \$2,000 - 3,000



- 1207 (★) **24¢ dark violet, 1880 Special Printing (200)**, without gum as issued, extremely fresh and pleasing example of this scarce stamp, featuring breathtaking rich color, and is a flawless fault free stamp, Fine, *only 67 examples are known to exist*; with 1989 P.F. certificate. Scott \$10,500. Estimate \$3,500 - 5,000



1208



1209



1210



1211



1212

- 1208 ★ 5¢ yellow brown (205)**, o.g., hinge remnant, terrific example with marvelous rich color, Very Fine to Extremely Fine; with 2000 P.F. certificate. Scott \$240. Estimate \$200 - 300
- 1209 ★★ 1¢ gray blue, re-engraved (206)**, o.g., never hinged, tremendous top quality mint stamp in a wonderful state of preservation, Very Fine to Extremely Fine; with 2004 P.S.E. certificate. Scott \$225. Estimate \$300 - 400
- 1210 ★★ 3¢ blue green, re-engraved (207)**, o.g., never hinged, absolutely gorgeous stamp with JUMBO margins rarely encountered on this issue; a wonderfully fresh stamp in Post Office fresh condition, Very Fine to Extremely Fine; with 2005 P.S.E. certificate. Scott \$225. Estimate \$300 - 400
- 1211 ○ 6¢ rose, re-engraved (208)**, black grid cancellation, lovely example of this difficult rose shade, with premium centering and vivid color, Very Fine to Extremely Fine; with 2008 P.F. certificate. Scott \$110. Estimate \$100 - 150
- 1212 ★ 6¢ deep brown red, re-engraved (208a)**, o.g., lightly hinged, marvelous deep rich color, a premium quality example with tremendous eye appeal, Very Fine; with 1984 P.F. certificate. Scott \$550. Estimate \$500 - 750



1213



1214



1215

- 1213 ★ 10¢ brown, re-engraved (209)**, o.g., very lightly hinged, gorgeous stamp with generous margins and crisp clear color, Extremely Fine; with 2005 P.S.E. certificate graded XF 90. Scott \$160. SMQ XF 90; \$275. Estimate \$250 - 350
- 1214 ★★ 2¢ red brown (210)**, o.g., never hinged, superior example in immaculate mint condition; a beautiful stamp with gorgeous fresh color, Extremely Fine; with 2010 P.S.E. certificate graded XF 90. Scott \$130. SMQ XF 90; \$475. Estimate \$350 - 500
- 1215 ★ 4¢ blue green (211)**, o.g., barest trace of hinge, handsome example with extremely fresh color, Very Fine; with 2009 P.F. certificate. Scott \$250. Estimate \$200 - 300



1216



1217



1218



1219

- 1216 ★ 2¢ pale red brown (1883 Special Printing (211B))**, o.g., lightly hinged, outstanding 1883 Special Printing with outstanding centering and lively rich color; among the most undervalued stamps in all philately, Extremely Fine; with 1990 P.F. certificate. Scott \$375. Estimate \$500 - 750
- 1217 ★★ 1¢ ultramarine (212)**, o.g., never hinged, delightful well centered stamp in an impressive state of preservation, as fresh as the very first day it was issued, Very Fine to Extremely Fine; with 2008 P.S.E. certificate graded VF-XF 85. Scott \$290. SMQ **VF-XF 85**; \$475. Estimate \$400 - 600
- 1218 ★★ 2¢ green (213)**, o.g., never hinged, outstanding well margined example with striking rich color; a pristine showpiece, Very Fine to Extremely Fine; with 1999 P.F.C. and 2011 P.F. certificate graded VF-XF 85 XQ. Scott \$120. SMQ **VF-XF 85**; \$225. Estimate \$200 - 300
- 1219 ★★ 3¢ vermilion (214)**, o.g., never hinged, remarkably fresh example in Post Office fresh mint condition; a great stamp, Extremely Fine; with 2008 P.S.E. certificate graded XF 90. Scott \$180. SMQ **XF 90**; \$475. Estimate \$350 - 500



1220



1221



1222



1223

- 1220 ★★ 4¢ carmine (215)**, o.g., never hinged, a most impressive top quality example with tantalizing rich color printed on lily white paper; an exemplary showpiece, Very Fine; with 2007 P.F. certificate. Scott \$550. Estimate \$500 - 750
- 1221 ★ 30¢ orange brown (217)**, o.g., barest trace of hinge, remarkable example with an incredible depth of color; simply gorgeous, Very Fine; with 1983 and 2002 P.F. certificates. Scott \$250. Estimate \$250 - 350
- 1222 ○ 30¢ orange brown (217)**, black cancellation, immense margins and deep rich color; very impressive example, Very Fine to Extremely Fine; with 2011 P.S.E. certificate graded VF-XF 85J. Scott \$100. SMQ **VF-XF 85J**; \$200. Estimate \$150 - 200
- 1223 ★ 90¢ purple (218)**, o.g., lightly hinged, boardwalk margins and ravishing rich color; a very impressive example of this popular stamp, F.-V.F.; with 2005 P.F. certificate. Scott \$900. Estimate \$600 - 800

1890 Issue



1224



1225



1226



1227



1228

- 1224 ★★ **1¢ dull blue (219)**, o.g., never hinged, fantastic top sheet margin single with incredibly rich color, Very Fine; with 2008 P.F. certificate. Scott \$65. Estimate \$75 - 100
- 1225 ★★ **2¢ lake (219D)**, o.g., never hinged, showpiece example with giant size margins and desirable rich color; an awesome stamp, much nicer than the accompanying certificate grading it at "85" would indicate, Very Fine to Extremely Fine; with 2011 P.S.E. certificate graded VF-XF 85J. Scott \$550. SMQ **VF-XF 85J**; \$1,350. Estimate \$1,000 - 1,500
- 1226 ★★ **2¢ carmine (220)**, o.g., never hinged, extra large margins and mouthwatering rich color; simply gorgeous, Extremely Fine; with 2010 P.S.E. certificate graded XF 90. Scott \$60. SMQ **XF 90**; \$250. Estimate \$200 - 300
- 1227 ★★ **2¢ carmine, cap on left "2" variety (220a)**, o.g., never hinged, pristine mint example with unblemished gum without a single skip or bend, scarce thus, F.-V.F.; with photocopy of 2006 P.S.E. certificate for block/4, from which this stamp was taken, this being the bottom left stamp from the block. Scott \$425. Estimate \$300 - 400
- 1228 ★ **2¢ carmine, cap on both "2's" variety (220c)**, o.g., hinged, delightful example of this incredibly scarce cap on both "2's" variety with fantastic deep rich color, Very Fine; with 1986 P.F.C. and 2011 P.S.E. certificate. Scott \$650. Estimate \$500 - 750



1229



1230



1231

- 1229 ★ **3¢ purple (221)**, o.g., hinged, fabulous JUMBO with scintillating color, Extremely Fine; with 2008 P.S.E. certificate graded XF 90J. Scott \$60. SMQ **XF 90J**; \$225. Estimate \$150 - 200
- 1230 ★★ **4¢ dark brown (222)**, o.g., never hinged, extremely well centered example with rich color and wonderful overall freshness, Extremely Fine; with 2010 P.S.E. certificate graded XF 90. Scott \$275. SMQ **XF 90**; \$800. Estimate \$600 - 800
- 1231 ★★ **5¢ chocolate (223)**, o.g., never hinged, incredibly fresh example in immaculate mint condition, Very Fine; with 2001 P.F. certificate. Scott \$200. Estimate \$150 - 200



- 1232 ★★ 6¢ brown red (224)**, o.g., never hinged, handsome top quality example featuring boardwalk margins and scintillating color; a true condition rarity when found so choice, Extremely Fine to Superb, ex: Westchester Collection; with 1996 P.F. certificate. Scott \$190. Estimate \$1,000 - 1,500



1233



1234

- 1233 ★★ 8¢ lilac (225)**, bottom plate number single, o.g., never hinged, gleaming fresh example with extra large margins and immaculate gum; very desirable top quality stamp, Extremely Fine; with 1994 P.F. certificate. Scott \$150. Estimate \$200 - 300

- 1234 ★★ 15¢ indigo (227)**, o.g., never hinged, extraordinary example in a gorgeous mint state, with breathtaking color, Very Fine; with 1985 P.F.C. and 2006 P.F. certificate graded VF-XF 85. Scott \$600. SMQ **VF-XF 85**; \$1,250. Estimate \$1,000 - 1,500



1235



1236

- 1235 ★ 30¢ black (228)**, o.g., hinged (tiny pencil mark on gum), fabulous example with large balanced margins and sumptuous rich color; an outstanding stamp, Extremely Fine; with 2001 P.S.E. and 2009 P.S.E. certificate graded XF 90. Scott \$300. SMQ **XF 90**; \$725. Estimate \$600 - 800

- 1236 ★ 90¢ orange (229)**, o.g., hinged, absolutely gorgeous top quality example featuring enormous margins and radiant color, Very Fine to Extremely Fine; with 2006 P.F. certificate. Scott \$475. SMQ **VF-XF 85**; \$750. Estimate \$500 - 750

1893 Columbian Issue



1237



1238



1239

- 1237 ★★ **1¢ Columbian (230)**, o.g., never hinged, incredibly rich color, a select stamp, Extremely Fine; with 2007 P.S.E. certificate graded XF 90. Scott \$35. SMQ **XF 90**; \$110. Estimate \$75 - 100
- 1238 ★★ **2¢ Columbian (231)**, o.g., never hinged, awesome example with huge margins and rich color, Very Fine; with 2006 P.S.E. certificate graded VF 80J. Scott \$35. SMQ **VF 80J**; \$45. Estimate \$50 - 75
- 1239 ★★ **3¢ Columbian (232)**, o.g., never hinged, vibrant color printed on clean white paper, very pleasing, Very Fine; with 2006 P.F. certificate. Scott \$105. Estimate \$75 - 100



- 1240 ★★ **4¢ Columbian, "Three Leaf" variety (233)**, o.g., never hinged, impressive example of the "Three Leaf" variety with brilliant fresh color, Very Fine to Extremely Fine; with 2005 P.F.C. and 2005 P.S.E. certificate graded VF-XF 85. Scott \$160. SMQ **VF-XF 85**; \$250. Estimate \$200 - 300



- 1241 ★★ **4¢ Columbian (233)**, o.g., never hinged, magnificent well margined example, with royal rich color, simply gorgeous, Very Fine to Extremely Fine; with 2006 P.F. certificate. Scott \$160. Estimate \$150 - 200

The Rare 4 Cent Columbian Blue Color Error



- 1242 ★★ **4¢ Columbian, blue color error (233a)**, o.g., never hinged, absolutely gorgeous example of the blue color error in pristine mint condition with sharp clear color and gleaming fresh gum; a true condition rarity as this stamp is virtually impossible to find in never hinged condition; a great rarity missing from even the most advanced collections, Fine; with 2002 P.F. certificate. Scott \$32,500. Estimate \$15,000 - 20,000



1243



1244



1245

1243 ★★ **5¢ Columbian (234)**, o.g., never hinged, fantastic well centered example with rich color, Very Fine to Extremely Fine; with 2007 P.S.E. certificate graded VF-XF 85. Scott \$160. SMQ **VF-XF 85**; \$275.

Estimate \$200 - 300

1244 ★★ **8¢ Columbian (236)**, o.g., never hinged, extraordinary top quality stamp with fabulous color, Extremely Fine; with 2007 P.S.E. certificate graded XF 90. Scott \$160. SMQ **XF 90**; \$450.

Estimate \$300 - 400

1245 ★ **8¢ Columbian, interesting offset variety (236 var.)**, o.g., very lightly hinged, wonderful example of what had always been known as a great philatelic rarity, but now is little more than a interesting footnote; printed on both sides used to be the way this stamp had always been marketed; not anymore, as the expert's have decided to devalue this popular issue; in any event this stamp is an eye catching showpiece that would enhance any collection, F.-V.F.; with 1977 P.F. certificate specifically describing this stamp as "printed on both sides". Scott \$52.

Estimate \$200 - 300



1246



1247

1246 ★★ **10¢ Columbian (237)**, o.g., never hinged, fabulous rich shade; a handsome example in immaculate quality, F.-V.F.; with 2006 P.S.E. certificate. Scott \$285.

Estimate \$150 - 200

1247 ★ **10¢ Columbian (237)**, o.g., barest trace of hinge, brilliant color, a decent stamp, F.-V.F. Scott \$100.

Estimate \$50 - 75



1248 ★★ **15¢ Columbian (238)**, o.g., never hinged, gorgeous left sheet margin single with part imprint in the selva; an impeccably fresh and choice mint stamp in a wonderful state of preservation, as it's gum is unblemished without a single skip or bend; just as nice on the front - with breathtaking color and finely etched impression; without question this is one of the very best 15 cent Columbians out there for the taking, Extremely Fine. Scott \$675.

Estimate \$750 - 1,000



1249



1250



1251

- 1249 ★ **30¢ Columbian (239)**, disturbed o.g., handsome stamp with radiant color, Very Fine; with 1992 P.F. certificate. Scott \$240. Estimate \$100 - 150
- 1250 ★ **50¢ Columbian (240)**, o.g., lightly hinged, extremely fresh and choice example, F.-V.F.; with photocopy of 1984 P.F. certificate for block/4, from which this stamp was taken. Scott \$500. Estimate \$250 - 350
- 1251 ★ **\$1 Columbian (241)**, o.g., barest trace of hinge, lively rich color, a desirable example as the gum could easily pass as never hinged, F.-V.F.; with 2000 P.F. certificate. Scott \$1,100. Estimate \$500 - 750



- 1252 ★ **\$2 Columbian (242)**, slightly disturbed o.g., lovely well centered example of this popular stamp; completely sound in all respects, with an overly critical PSE certificate that calls the gum "slightly disturbed o.g."; a beauty with captivating color, Very Fine to Extremely Fine; with 1989 P.F.C. and 2008 P.S.E. certificate graded VF-XF 85. Scott \$1,150. SMQ **VF-XF 85**; \$1,400 for lightly hinged. Estimate \$750 - 1,000



1253



1254

- 1253 ★ **\$3 Columbian (243a)**, o.g., hinged, marvelous example of the highly sought after olive green shade, with deeply saturated color and nicely balanced margins, Extremely Fine; with 2005 P.S.E. certificate graded XF 90. Scott \$1,500. SMQ **XF 90**; \$3,000. Estimate \$2,000 - 3,000
- 1254 ★ **\$3 Columbian (243)**, o.g., hinged, brilliant fresh example with lively color and finely detailed impression; very pretty, F.-V.F.; with 1977 and 1997 P.F. certificates. Scott \$1,500. Estimate \$1,000 - 1,500



- 1255 ★ **\$4 Columbian (244)**, o.g., lightly hinged, impressive example with awesome rich shade of crimson lake; a gorgeous \$4 Columbian, Very Fine; with 2004 P.F. certificate. Scott \$2,000. Estimate \$1,500 - 2,000



- 1256 ★ **\$4 Columbian (244a)**, o.g., hinged, extraordinary example of the beautiful rose carmine shade, with choice centering and lively color, Very Fine; with 1999 P.F. certificate. Scott \$2,000. Estimate \$1,500 - 2,000



- 1257 ★ **\$4 Columbian (244)**, slightly disturbed o.g. (minor gum skips along bottom of stamp caused by short gumming during production process), a spectacular position showpiece in the true crimson shade, this bottom sheet margin single shows the scarce part imprint in selvage; among the most beautiful and eye catching examples imaginable; barely perceptible vertical crease at bottom left is mostly confined to the selvage area, otherwise Very Fine. Scott \$2,000. Estimate \$1,000 - 1,500



- 1258 ★ **\$5 Columbian (245)**, o.g., single small hinge remnant, brilliantly colored example that is completely sound and rather attractive, with bold jet-black color printed on lily white paper, F.-V.F.; with 1993 P.F. certificate. Scott \$2,400. Estimate \$1,000 - 1,500

1894-1898 Bureau Issues



1259



1260



1261

- 1259 ★ **1¢ ultramarine (246)**, o.g., hinged, perfectly centered example with incredibly rich color, much more intense than usually found on this typically washed out issue, Superb; with 2005 P.S.E. certificate. Scott \$30. Estimate \$75 - 100
- 1260 ★★ **1¢ blue (247)**, o.g., never hinged, huge margined right sheet margin imprint single with gleaming fresh color, Very Fine; with 1989 P.F. certificate. Scott \$190. Estimate \$150 - 200
- 1261 ★★ **2¢ pink, type I (248)**, o.g., never hinged, intense color, a pleasing mint stamp, F.-V.F.; with 1985 P.F. certificate. Scott \$90. Estimate \$50 - 75



1262



1263



1264



1265

- 1262 ★★ **2¢ carmine lake, type I (249)**, o.g., never hinged, terrific example of this frustratingly difficult stamp; with extremely intense color, in immaculate mint condition; a very choice stamp, F.-V.F.; with 2005 P.F. certificate. Scott \$450. Estimate \$300 - 400
- 1263 ★ **2¢ carmine, type I (250)**, o.g., barest trace of hinge, enormous margins and vivid color; simply amazing, Extremely Fine; with 2009 P.F. certificate. Scott \$30. Estimate \$100 - 150
- 1264 (★) **2¢ carmine, type II (251)**, expertly regummed, extremely fresh example of this tough type II stamp, F.-V.F.; with 1980 P.F. certificate calling the gum "original". Scott \$375 for o.g. Estimate \$100 - 150
- 1265 ★★ **2¢ pale carmine, type III (252 var.)**, o.g., never hinged, brilliant fresh example of the rarely offered pale carmine shade; a handsome top left corner margin single, F.-V.F.; with 2002 P.F. certificate. Scott \$375. Estimate \$200 - 300



1266



1267



1268



1269



1270

- 1266 ★★ 3¢ purple (253)**, o.g., never hinged (minor gum crease), extremely fresh and choice example with intense color; very pretty, F.-V.F.; with clear 1989 P.F. certificate. Scott \$325. Estimate \$100 - 150
- 1267 ★ 4¢ dark brown (254)**, o.g., hinged, impressive stamp with tall margins and delightful rich color, Very Fine to Extremely Fine; with 1984 P.F. certificate. Scott \$190. Estimate \$200 - 300
- 1268 ★ 5¢ chocolate (255)**, o.g., hinged, handsome example of this exceedingly difficult stamp, with brilliant fresh color, Extremely Fine; with 2008 P.S.E. certificate graded XF 90. Scott \$110. SMQ **XF 90**; \$175. Estimate \$150 - 200
- 1269 ★ 6¢ dull brown (256)**, o.g., hinged, among the most impressive examples of this tough stamp we have ever had the pleasure to offer at public auction; a magnificent example with huge JUMBO margins and luscious rich color; simply amazing, Extremely Fine; with 2010 P.S.E. certificate graded XF 90J. Scott \$160. SMQ **XF 90J**; \$375. Estimate \$350 - 500
- 1270 ★★ 8¢ violet brown (257)**, o.g., never hinged, terrific example with warm rich color; quite elusive when found in this immaculate mint state, Very Fine; with 2011 P.S.E. certificate graded VF 80. Scott \$475. SMQ **VF 80**; \$475. Estimate \$400 - 600



1271



1272

- 1271 (★) 10¢ dark green (258)**, top plate number single, expertly regummed, lively bright shade, a handsome example of this terribly elusive stamp, F.-V.F.; with 1980 P.F. certificate specifically calling them gum "original". Scott \$275 for o.g. Estimate \$100 - 150
- 1272 (★) 15¢ dark blue (259)**, expertly regummed, wide margins and bold color, pleasing appearance, F.-V.F.; with 1980 P.F. certificate. Scott \$275 for o.g. Estimate \$100 - 150



1273 ★★ 50¢ orange (260), o.g., never hinged, among the freshest and choicest top quality never hinged stamps one could ever imagine, with breathtaking color and gleaming fresh gum, as pristine as the very first day it was issued; a true condition rarity, Very Fine; with 1977 and 2004 P.F. certificates. Scott \$1,500. Estimate \$1,500 - 2,000

1274 ★ \$1 black, type I (261), o.g., hinged, striking example in unfathomable quality; with the deepest and richest color printed on bright white paper and beautiful well proportioned margins; an incredible stamp, Extremely Fine; with 1980 and 1999 P.F. certificates. Scott \$1,000. Estimate \$1,500 - 2,000



1275 ★ \$1 black, type II (261A), o.g., lightly hinged, incredibly fresh and choice example with razor sharp impression; a completely sound and attractive copy of this scarce type II stamp, F.-V.F.; with 2001 P.F. certificate. Scott \$2,100. Estimate \$1,000 - 1,500

1276 ★ \$2 bright blue (262), o.g., hinged, brilliant fresh color; a handsome example of this terribly elusive \$2 Madison, Fine; with 1977 P.F. certificate. Scott \$2,750. Estimate \$750 - 1,000



1277 ★ \$5 dark green (263), o.g., hinged, handsome example of this exceedingly difficult \$5 Marshall, with bold color printed on clean white paper, F.-V.F.; with 1999 P.F. certificate. Scott \$4,500. Estimate \$2,000 - 3,000



1278



1279



1280



1281



1282

- 1278 ★★ **1c blue (264)**, o.g., never hinged, choice mint stamp with dynamite color, Extremely Fine; with 2006 P.S.E. certificate graded XF 90. Scott \$17. SMQ **XF 90**; \$75. Estimate \$50 - 75
- 1279 ★★ **3c purple (268)**, o.g., never hinged, tremendous top quality mint stamp with extraordinary rich color, Very Fine to Extremely Fine; with 2008 P.S.E. certificate graded VF-XF 85. Scott \$115. SMQ **VF-XF 85**; \$175. Estimate \$150 - 200
- 1280 ★★ **4c dark brown (269)**, o.g., never hinged, outstanding wide margined example in a wonderful mint state, with nice wide margins and intense color, Very Fine to Extremely Fine; with 1994 P.F. certificate. Scott \$125. Estimate \$150 - 200
- 1281 ★★ **5c chocolate (270)**, top plate number single, o.g., never hinged, deep vibrant color and clearly etched impression, Very Fine; with 1986 P.F. certificate. Scott \$105. Estimate \$100 - 150
- 1282 ★★ **6c dull brown (271)**, o.g., never hinged, gorgeous well centered stamp with brilliant color; a very tough stamp to find in nice quality, Very Fine; with 2008 P.S.E. certificate. Scott \$360. Estimate \$250 - 350



1283



1284



1285

- 1283 ★★ **8c violet brown (272)**, top plate number single, o.g., never hinged, vivid and fresh example with sterling rich color, Very Fine; with photocopy of 1988 P.F. certificate for strip/3, from which this stamp was taken, this being the right side stamp. Scott \$210. Estimate \$200 - 300
- 1284 ○ **8c violet brown, watermarked USIR (272a)**, black cancellation, a flawless example of this scarce watermark variety, with intense color, Fine; with 2010 P.S.E. certificate. Scott \$1,000. Estimate \$250 - 350
- 1285 ★★ **10c dark green (273)**, o.g., never hinged, splendid high quality top margin part imprint single with superior color and clear impression, Very Fine; with 2008 P.S.E. certificate graded VF 80. Scott \$280. SMQ **VF 80**; \$280. Estimate \$200 - 300



1286



1287



1288



1289

- 1286 ★★ 15¢ dark blue (274)**, o.g., never hinged, unbelievably fresh example with bold prooflike color; an amazing top quality showpiece, Extremely Fine; with 2001 P.F.C. and 2008 P.F. certificate graded XF 90. Scott \$625. SMQ XF 90; \$1,600. Estimate \$1,000 - 1,500
- 1287 ★ 50¢ orange (275)**, o.g., lightly hinged, tremendous example of this tough stamp, with rich “orangy” color and wonderfully balanced margins; much more difficult to find in this quality than its modest catalog value would indicate, Extremely Fine; with 2000 P.F. certificate. Scott \$260. Estimate \$400 - 600
- 1288 ★ \$1 black, type I (276)**, o.g., hinged, Jet-Black color printed on bleach white paper, very attractive, Very Fine; with 2004 P.F. certificate. Scott \$600. Estimate \$350 - 500
- 1289 ★ \$1 black, type II (276A)**, o.g., lightly hinged, vivid color, a flawless and sound example of this tough stamp, Fine; with 2002 P.S.E. certificate. Scott \$1,250. Estimate \$400 - 600



1290



1291

- 1290 ★ \$2 bright blue (277)**, o.g., hinged, F.-V.F.; with 1998 P.F. certificate. Scott \$900. Estimate \$400 - 600
- 1291 ★ \$2 dark blue (277a)**, o.g., lightly hinged (minor gum bend), large margined example of the desirable dark blue shade, F.-V.F.; with photocopy of 1980 P.F. certificate for block/4, from which this stamp was taken. Scott \$900. Estimate \$350 - 500



- 1292 ★ \$5 dark green (278)**, o.g., hinged, fabulous deep rich color; a pristine and extremely attractive stamp, Very Fine; with 1997 P.F. certificate. Scott \$2,000. Estimate \$1,500 - 2,000



1293



1294



1295

- 1293 ★★** 1¢ deep green (279), o.g., never hinged, gorgeous bottom sheet margin single with gargantuan board-walk margins of epic proportions, the likes of we have never encountered on this typically “tight” margined issue; with glowing rich color printed on bright white paper; the most amazing existing example of this stamp - deserving placement in a collection of distinction, Superb, Ex: Westchester, Ex: Morris collections; with 1990 P.F. certificate. Scott \$25. Estimate \$300 - 400
- 1294 ★★** 2¢ red, type IV (279B), right plate number single, o.g., never hinged, outstanding top quality example with beautifully balanced margins, Extremely Fine. Scott \$25. Estimate \$75 - 100
- 1295 ★** 2¢ rose carmine, type IV (279Bc), o.g., lightly hinged, fresh example of this elusive stamp in the true rose carmine shade, V.G.-Fine; with photocopy of 2005 P.F. certificate for pair, from which this stamp was taken. Scott \$275. Estimate \$100 - 150



1296



1297



1298



1299

- 1296 ★★** 4¢ orange brown (280b), o.g., never hinged, remarkable top sheet margin single with imprint with unusually large margins and crystal clear color and detailed impression, Extremely Fine; with 1988 P.F. certificate for pair, from which this extraordinary stamp was taken, this being the left stamp from the pair. Scott \$75. Estimate \$200 - 300
- 1297 ★★** 4¢ orange brown (280b), o.g., never hinged, immaculate stamp that looks like it was just broken from the sheet at the Post Office, Very Fine to Extremely Fine; with 1999 P.F. certificate. Scott \$75. Estimate \$100 - 150
- 1298 ★★** 5¢ dark blue (281), o.g., never hinged, a fantastic well centered stamp with captivating rich color and crystal clear impression; rarely fund in such outstanding condition, Extremely Fine; with 2004 P.F.C. for block/4 from which it was taken; with 2011 P.S.E. certificate graded XF 90. Scott \$100. SMQ **XF 90**; \$325. Estimate \$250 - 350
- 1299 ★★** 6¢ lake (282), o.g., never hinged, tremendous example with dynamite color; a gorgeous bottom sheet margin single, Extremely Fine; with 1988 P.F. certificate. Scott \$140. Estimate \$200 - 300



1300



1301



1302

- 1300 ★★ 10¢ brown, type I (282C)**, o.g., never hinged, extremely fresh and choice example with bold color; quite scarce in this pristine condition, Very Fine; with 1994 P.F. certificate. Scott \$525. Estimate \$400 - 600
- 1301 ★★ 10¢ orange brown, type II (283)**, o.g., stamp never hinged, hinged in selvage only, uniquely appealing GEM QUALITY example that almost never comes in such choice condition; a handsome top sheet margin single with part imprint in selvage, with extra large margins and exemplary color; a fantastic stamp of unparalleled quality that is surprisingly difficult to find in top condition, Extremely Fine to Superb; with 1983 P.F. certificate. Scott \$450. Estimate \$750 - 1,000
- 1302 ★★ 15¢ olive green (284)**, o.g., never hinged, marvelous example in pristine condition, with unbelievable rich color, Very Fine; with 1988 P.F. certificate. Scott \$475. Estimate \$350 - 500

1898 Trans-Mississippi Issue



1303



1304



1305

- 1303 ★★ 1¢ Trans-Miss. (285)**, o.g., never hinged, impressive mint stamp with gleaming rich color, Very Fine; with 2008 P.S.E. certificate. Scott \$67. Estimate \$50 - 75
- 1304 ★★ 2¢ Trans-Miss. (286)**, o.g., never hinged, phenomenal example of this tough stamp; perfectly centered amid extra large balanced margins; a World Class GEM of unparalleled quality, Superb; with 2011 P.F. certificate. Scott \$67. Estimate \$400 - 600
- 1305 ★★ 4¢ Trans-Miss. (287)**, o.g., never hinged, Post Office fresh mint stamp with gleaming bright color, without any trace of oxidation that tends to plague this issue, Very Fine; with 2001 P.F. certificate. Scott \$300. Estimate \$200 - 300



1306



1307



1308

- 1306 ★★ 5¢ Trans-Miss. (288)**, o.g., never hinged, choice example featuring the best color you'll ever see - a gorgeous royal blue shade; immaculate both front and back with gleaming unblemished gum, Very Fine; with 1993 P.F. certificate. Scott \$275. Estimate \$200 - 300
- 1307 ★ 10¢ Trans-Miss. (290)**, o.g., hinged, sharp brilliant proof-like impression and rich radiant color, Very Fine to Extremely Fine, a true premium example; with P.S.E. encapsulated graded VF-XF 85. Scott \$150. SMQ **VF-XF 85**; \$200. Estimate \$150 - 200
- 1308 ★ 50¢ Trans-Miss. (291)**, o.g., hinged, attractive example with heavenly rich color and big margins, Very Fine to Extremely Fine; with 2008 P.F. certificate graded VF-XF 85. Scott \$600. SMQ **VF-XF 85**; \$750. Estimate \$600 - 800



- 1309 ★ \$1 Trans-Miss. (292)**, o.g., lightly hinged, extremely desirable example of this most popular stamp, with lovely centering and big margins, Very Fine; with 1978 P.F. certificate. Scott \$1,400. Estimate \$1,000 - 1,500



- 1310 ★ \$2 Trans-Miss. (293)**, o.g., very lightly hinged, among the freshest and choicest examples one could ever imagine, with superior centering and outstanding vivid color; a great copy of the \$2 Trans for the most quality conscious collector of GEM stamps, Extremely Fine; with 1985 P.F.C. and 2005 P.S.E. certificate graded XF 90. Scott \$1,900. SMQ **XF 90**; \$3,250. Estimate \$2,500 - 3,500

1901 Pan-American Issue



1311



1312



1313

- 1311 ★★** **1¢ Pan-American (294)**, o.g., never hinged, wide margins and intense color, a lovely mint stamp, Extremely Fine; with 2007 P.S.E. certificate graded XF 90. Scott \$42. SMQ **XF 90**; \$125. Estimate \$100 - 150
- 1312 ★★** **2¢ Pan-American (295)**, o.g., never hinged, absolutely gorgeous top quality stamp with extra large margins and vibrant color, Extremely Fine to Superb; with 2008 P.S.E. certificate graded XF-SUP 95. Scott \$40. SMQ **XF-SUP 95**; \$350. Estimate \$250 - 350
- 1313 ★★** **4¢ Pan-American (296)**, bottom plate number single, o.g., never hinged, wonderfully fresh example with choice centering, Very Fine to Extremely Fine; with 2008 P.S.E. certificate graded VF-XF 85. Scott \$170. SMQ **VF-XF 85**; \$225. Estimate \$200 - 300



1314



1315



1316

- 1314 ★** **5¢ Pan-American (297)**, slightly disturbed o.g., wide margined example with brilliant color, Extremely Fine. Scott \$75. Estimate \$50 - 75
- 1315 ★★** **8¢ Pan-American (298)**, o.g., never hinged, unusually large margins; an extraordinary example with astounding rich colors, Extremely Fine; with 2006 P.F. certificate. Scott \$230. Estimate \$200 - 300
- 1316 ★** **10¢ Pan-American (299)**, o.g., very lightly hinged, premium example with impressive wide margins and lively rich color, Extremely Fine; with 2007 P.F. certificate. Scott \$115. Estimate \$100 - 150

1902-1908 Regular and Commemorative Issues



1317

1318

1319

1320

- 1317 ★★ 1¢ blue green (300)**, o.g., never hinged, unbelievable example with massive margins unlike anything we have ever encountered on this issue; this spectacular showpiece has intense color and clear impression; the quintessential example of this stamp, Extremely Fine to Superb; with 2000 P.F. certificate. Scott \$27. Estimate \$100 - 150
- 1318 ★★ 1¢ blue green (300b)**, booklet pane of 6, o.g., never hinged, extraordinary never hinged example with gleaming rich color; quite elusive when found in such choice quality, Very Fine; with 2008 P.F. certificate. Scott \$1,150. Estimate \$750 - 1,000
- 1319 ★★ 2¢ carmine (301)**, o.g., never hinged (minor gum skips), desirable example with robust color and big margins, Extremely Fine; with 2001 P.S.E. and 2007 P.S.E. certificate graded XF 90. Scott \$37. SMQ **XF 90**; \$110. Estimate \$75 - 100
- 1320 ★ 2¢ carmine (301c)**, booklet pane of 6, o.g., barest trace of hinge along the extreme right edge of pane (appears never hinged), extremely desirable example of this difficult pane; which has outstanding deep color, F.-V.F.; with 2008 P.F. certificate. Scott \$500. Estimate \$350 - 500



- 1321 ★★ 3¢ bright violet (302)**, o.g., never hinged, Post Office fresh stamp with brilliant color, F.-V.F.; with 2008 P.S.E. certificate graded F-VF 75. Scott \$130. SMQ **F-VF 75**; \$90. Estimate \$75 - 100



1322



1323

- 1322 ★★ **4¢ brown (303)**, o.g., never hinged, nice looking left margin partial imprint single with beautiful rich color, Fine. Scott \$140. Estimate \$50 - 75
- 1323 ★★a **4¢ brown (303)**, block of 4, o.g., never hinged (small spot of gum disturbance affects only the bottom right stamp), extremely handsome multiple featuring three pristine mint stamps, with the upper right stamp being particularly choice, F.-V.F.; with 2009 P.S.E. certificate. Scott \$475 for singles. Estimate \$250 - 350



1324



1325



1326



1327



1328

- 1324 ★★ **5¢ blue (304)**, o.g., never hinged, a dynamite top quality example with generous margins and outrageous rich color printed on clean white paper, Extremely Fine; with 2003 P.F. certificate. Scott \$150. Estimate \$200 - 300
- 1325 ★★ **5¢ blue (304)**, o.g., never hinged, exceedingly fresh and choice, a beauty, Very Fine to Extremely Fine; with 2001 P.S.E. certificate. Scott \$150. Estimate \$150 - 200
- 1326 ○ **5¢ blue (304)**, neatly struck black duplex cancellation, enormous JUMBO margins and incredibly rich color; an awesome showpiece of which only 5 examples have attained this grade according to PSE's population report, with 6 others grading higher, Extremely Fine to Superb; with 2009 P.S.E. certificate graded XF-SUP 95J. Scott \$2. SMQ **XF-SUP 95J**; \$335. Estimate \$250 - 350
- 1327 ★★ **6¢ claret (305)**, o.g., never hinged, beautiful example in immaculate mint condition with ravishing rich color, Very Fine to Extremely Fine; with 2007 P.F. certificate graded VF-XF 85. Scott \$150. SMQ **VF-XF 85**; \$250. Estimate \$200 - 300
- 1328 ★★ **8¢ violet black (306)**, o.g., never hinged, particularly well centered example featuring outstanding color and clear impression, Extremely Fine. Scott \$100. Estimate \$150 - 200



1329



1330



1331



1332

- 1329 ★★ 10¢ pale red brown (307)**, right strip of 3, o.g., never hinged, brilliant fresh multiple with exceptional centering, Very Fine; with 2011 P.S.E. certificate. Scott \$525. Estimate \$300 - 400
- 1330 ★★ 13¢ purple black (308)**, o.g., never hinged, flawless mint stamp with riveting color and detailed impression, Very Fine to Extremely Fine; with 1997 P.F.C. and 2008 P.S.E. certificate graded VF-XF 85. Scott \$100. SMQ VF-XF 85; \$175. Estimate \$150 - 200
- 1331 ★★ 15¢ olive green (309)**, o.g., never hinged, gorgeous fresh color, a premium quality example of this elusive mint stamp, F.-V.F.; with 2006 P.F. certificate. Scott \$475. Estimate \$250 - 350
- 1332 ★ 50¢ orange (310)**, o.g., hinged, awesome rich color; a select example with generous margins, Very Fine to Extremely Fine; with 2005 P.F. certificate. Scott \$375. Estimate \$350 - 500



1333



1334



1335

- 1333 ★ \$1 black (311)**, o.g., hinged, lovely example with alluring rich color, a handsome top quality stamp, Very Fine; with 2004 P.S.E. certificate. Scott \$600. Estimate \$400 - 600
- 1334 ★ \$2 dark blue (312)**, o.g., barest trace of hinge, vivid fresh example with sharp clear impression, Fine; with 1983 P.F. certificate. Scott \$825. Estimate \$400 - 600
- 1335 ★ \$5 dark green (313)**, o.g., very lightly hinged, delightful example with gorgeous centering, nicely balanced margins, and fabulous color; not too shabby for this tough stamp, Very Fine to Extremely Fine; with 2008 P.S.E. certificate graded VF-XF 85. Scott \$2,100. SMQ VF-XF 85; \$2,500. Estimate \$2,000 - 3,000



1336



1337



1338



1339

- 1336 ★★ 1¢ blue green, imperf (314)**, o.g., never hinged, absolutely gorgeous left sheet margin single with partial imprint in selvage with huge boardwalk margins; an eye catching World Class GEM, Superb; with 2008 P.S.E. certificate graded Gem 100. Scott \$32. SMQ **Gem 100**; \$450. Estimate \$300 - 400
- 1337 ★★ 5¢ blue, imperf (315)**, o.g., never hinged, evenly balanced margins; a great stamp with fabulous deep color; a true GEM, Extremely Fine to Superb; with 2005 P.F. certificate. Scott \$600. Estimate \$600 - 800
- 1338 ★★ 2¢ carmine, type I (319)**, o.g., never hinged, tremendous rich color; an outstanding top quality stamp that is quite difficult to find in such choice condition, Extremely Fine; with 2005 P.S.E. certificate graded XF 90. Scott \$15. SMQ **XF 90**; \$100. Estimate \$100 - 150
- 1339 ★★ 2¢ carmine rose, type I (319b)**, o.g., never hinged, gorgeous example of the challenging rose carmine shade, with excellent centering, Very Fine to Extremely Fine; with 2006 P.S.E. certificate graded VF-XF 85. Scott \$45. SMQ **VF-XF 85**; \$70. Estimate \$100 - 150



- 1340 ★★ 2¢ carmine, type I (319g)**, booklet pane of 6, o.g., never hinged, particularly choice top quality multiple with nicely balanced margins and marvelous fresh color, Extremely Fine; with 2008 P.S.E. certificate. Scott \$240. Estimate \$200 - 300



1341



1342



Ex 1343



1344

- 1341 ★★ 2¢ lake, type II (319F)**, o.g., never hinged, extraordinary example of the 2 cent Shield stamp in the tough lake shade; a pristine example with full unblemished gum, Extremely Fine; with 1991 P.F. certificate. Scott \$25. Estimate \$75 - 100
- 1342 ★★ 2¢ carmine, type II (319Fi)**, right plate number single, o.g., never hinged, magnificent example of the scarce and undervalued type II stamp in the carmine shade; a wide margined example with great color, Extremely Fine; with 2010 P.S.E. certificate. Scott \$150. Estimate \$250 - 350
- 1343 ★★ 2¢ imperfs, types I and II (320,A,b)**, nice group of three better items, includes #320 imperforate single, a 320b scarlet shade in a Superb line pair, and a 320A lake shade Extremely Fine single, o.g., never hinged, all in immaculate mint condition, Very Fine to Extremely Fine; 320 with 2006 P.S.E. certificate graded VF 80, 320A with P.F. certificate. Scott \$212. Estimate \$150 - 200
- 1344 ★★ 2¢ carmine rose, imperf, type I (320c)**, o.g., never hinged, stunning huge margined example of the often misidentified carmine rose shade; a gorgeous example with true color, Extremely Fine to Superb; with 1994 P.F. certificate. Scott \$150. Estimate \$200 - 300



1345



1346



1347

- 1345 ★★ 3¢ Louisiana Purchase (325)**, o.g., never hinged, exceedingly fresh top quality example in Post Office fresh condition, Extremely Fine; with 2008 P.S.E. certificate graded XF 90. Scott \$185. SMQ **XF 90**; \$475. Estimate \$300 - 400
- 1346 ★★ 5¢ Louisiana Purchase (326)**, o.g., never hinged, tremendous rich color and crystal clear impression; an outstanding showpiece, Extremely Fine; with 2005 P.F. certificate. Scott \$200. Estimate \$250 - 350
- 1347 ★★ 10¢ Louisiana Purchase (327)**, o.g., never hinged, lively rich shade, an immaculate Post Office fresh and choice stamp, Very Fine; with 1995 P.F. certificate for this stamp when it was a right sheet margin single, the selvage being subsequently removed. Scott \$310. Estimate \$200 - 300



1348

- 1348 ★★ 5¢ Jamestown (330)**, o.g., never hinged (minor gum bend), marvelous top left corner margin single with wide margins and intense color, Very Fine; with 1987 P.F. certificate. Scott \$285. Estimate \$200 - 300

1908-1910 Washington-Franklin Issue, DL Watermark



1349



1350



1351



1352



1353

- 1349 ★★ 2¢ carmine (332)**, o.g., never hinged, sensational bottom margin single featuring JUMBO margins and vivid color; an eye catching stamp, Extremely Fine; with 2008 P.S.E. certificate graded XF 90J. Scott \$15. SMQ **XF 90J**; \$85. Estimate \$75 - 100
- 1350 ★★ 3¢ deep violet (333)**, o.g., never hinged, tremendous top quality stamp with stupefying deep rich color and immense margins unlike anything we have encountered on this issue; a stunning example of this, Extremely Fine, *Ex: Westchester collection*; with 1992 P.F. certificate. Scott \$75. Estimate \$150 - 200
- 1351 ★★ 4¢ orange brown (334)**, o.g., never hinged, astounding rich shade; an impeccably fresh and choice stamp, Extremely Fine; with 1999 P.F. certificate. Scott \$92. Estimate \$150 - 200
- 1352 ★★ 6¢ red orange (336)**, o.g., never hinged, luscious rich shade, an impressive well margined example, Very Fine to Extremely Fine; with 2003 P.F. certificate. Scott \$150. Estimate \$150 - 200
- 1353 ★★ 8¢ olive green (337)**, o.g., never hinged, impressive quality stamp with tall margins and sharp clear impression, Extremely Fine; with 2004 P.S.E. certificate. Scott \$105. Estimate \$150 - 200



1354



1355



1356



1357

- 1354 ★★ 10¢ yellow (338)**, o.g., never hinged, marvelous rich shade; a handsome top quality stamp in immaculate mint condition, Extremely Fine; with 2007 P.F. certificate graded XF 90. Scott \$160. SMQ **XF 90**; \$375. Estimate \$350 - 500
- 1355 ★★ 13¢ blue green (339)**, o.g., never hinged, outstanding TOP QUALITY example of this difficult stamp; a delightful example with exuberant color and large balanced margins, Extremely Fine to Superb; with 2011 P.S.E. certificate graded XF-SUP 95. Scott \$90. SMQ **XF-SUP 95**; \$675. Estimate \$600 - 800
- 1356 ★★ 15¢ pale ultramarine (340)**, o.g., never hinged, vivid color on bright white paper; a gleaming fresh wide margined example, Extremely Fine; with 1992 P.F.C. and 2006 P.S.E. certificate. Scott \$150. Estimate \$200 - 300
- 1357 ★ 50¢ violet (341)**, o.g., hinged, sensational example with warm rich color, a beauty, Extremely Fine; with 1980 P.F. certificate. Scott \$300. Estimate \$250 - 350



- 1358 ★ \$1 violet brown (342)**, o.g., lightly hinged, uniquely appealing stamp with dead-on perfect centering and alluring rich color; a striking showpiece that is very rare in this spectacular quality; this is 1 of 2 examples to attain the impressive grade of Sup-98 in PSE's population report, with only 2 others grading higher, Superb; with 2011 P.S.E. certificate graded SUP 98. Scott \$475. SMQ **SUP 98**; \$2,750. Estimate \$2,000 - 3,000



1359



1360



1361

- 1359 ★★ 1¢ green, imperf (343)**, o.g., never hinged, magnificent JUMBO with gleaming bright color; a great stamp, Superb; with 2008 P.S.E. certificate graded Gem 100. Scott \$8. SMQ **Gem 100**; \$125.

Estimate \$100 - 150

- 1360 ★★ 4¢ orange brown, imperf (346)**, left plate number single, o.g., never hinged, handsome well margined example with vivid color, Superb; with 2004 P.S.E. certificate for pair from which this plate number single was taken. Scott \$29.

Estimate \$50 - 75

- 1361 ★★ 5¢ blue, imperf (347)**, o.g., never hinged, magnificent top left corner margin single with immense margins and rich royal color; an eye popping example for the finest collection, Superb; with 2008 P.S.E. certificate graded Gem 100. Scott \$60. SMQ **Gem 100**; \$475.

Estimate \$350 - 500



- 1362 ★★ 1¢ green, vertical coil (348)**, line pair, o.g., never hinged, magnificent rich color; a top quality multiple in a wonderful state of preservation, Very Fine; with 2005 P.F. certificate. Scott \$600.

Estimate \$400 - 600



1363



1364



1365

- 1363 ★★ 2¢ carmine, vertical coil (349)**, o.g., never hinged (small spot of gum disturbance), generous margins and vibrant rich shade; one of the most impressive coil singles one could imagine; the accompanying certificate states that this stamp is "never hinged, coil single, with slight gum disturbance"; as the disturbance is little more than some minor gum glazing, this stamp can and should be considered a choice Never Hinged stamp; in Never Hinged the current SMQ of a single graded "95" is an impressive \$1,000.00; if you've been looking for a GEM quality example of 349 - then this is the stamp for you, Extremely Fine to Superb; with 2009 P.S.E. certificate graded XF-SUP 95. Scott \$225. SMQ **XF-SUP 95**; \$250 fir "hinged". Estimate \$200 - 300
- 1364 ★ 4¢ orange brown, vertical coil (350)**, line pair, o.g., lightly hinged only on the top stamp, decent example of this elusive multiple, with superior color, Fine; with 2006 P.F. certificate. Scott \$1,175. Estimate \$350 - 500
- 1365 ★ 5¢ blue, vertical coil (351)**, pair, o.g., lightly hinged only on bottom stamp, impressive deep shade; an elusive multiple showing natural straight edge along the bottom of the lower stamp from being a part of a paste-up pair, Fine; with 2006 P.F. certificate. Scott \$465 as singles. Estimate \$150 - 200



1366



1367



1368

- 1366 ★★ 1¢ green, horizontal coil (352)**, paste-up pair, 3mm spacing, showing the paste-up along the left edge of the left hand stamp, o.g., never hinged, extremely handsome multiple with unusually large margins and breathtaking fresh color, F.-V.F.; with 2001 P.F. certificate. Scott \$550. Estimate \$250 - 350
- 1367 ★ 2¢ carmine, horizontal coil (353)**, line pair, o.g., hinged, extremely handsome example of this elusive coil, with gorgeous rich color, F.-V.F.; with 2011 P.S.E. certificate. Scott \$750. Estimate \$400 - 600
- 1368 ★ 4¢ orange brown, horizontal coil (354)**, o.g., lightly hinged, a most impressive coil single featuring immense boardwalk margins and dazzling color; a true GEM worthy of placement in a collection of distinction, Extremely Fine to Superb; with 1989 P.F. certificate for pair from which this outstanding example was taken, this being the right stamp from the pair. Scott \$200. Estimate \$400 - 600



1369



1370

- 1369 ★ **4¢ orange brown, horizontal coil (354)**, pair, 2mm spacing, o.g., very lightly hinged, decent example of this elusive coil, with radiant color, Fine. Scott \$500. Estimate \$150 - 200
- 1370 ★ **5¢ blue, horizontal coil (355)**, pair, o.g., barest trace of hinge, magnificent coil with gorgeous rich color; the left stamp in the pair is a particularly choice well centered example, Very Fine to Extremely Fine; with 1986 P.F. certificate. Scott \$525. Estimate \$500 - 750



- 1371 ★ **10¢ yellow, horizontal coil (356)**, o.g., hinged, fiery bright color within balanced margins so uncommon on such a rare coil single, Extremely Fine; with P.S.E. encapsulated graded XF 90. Scott \$3,250. SMQ **XF 90**; \$4,750. Estimate \$3,500 - 5,000

1909 Bluish Paper Issue



1372



1373



1374

- 1372 ★★ **1¢ green, bluish paper (357)**, o.g., never hinged, Post Office fresh example in pristine quality, Very Fine; with 2005 P.F. certificate. Scott \$180. Estimate \$150 - 200
- 1373 ★★ **2¢ carmine, bluish paper (358)**, o.g., never hinged, large margins and vibrant color; a Post Office fresh stamp, Very Fine to Extremely Fine; with 2006 P.F. certificate. Scott \$170. Estimate \$200 - 300
- 1374 ★ **3¢ deep violet, bluish paper (359)**, o.g., very lightly hinged, a very attractive example of this scarce bluish paper showing intense bluing of the paper, without any ink handstamps on reverse that often-time plague these issues; an immaculate example with just a single faint hinge mark, scarce thus, F.-V.F.; with 2001 P.S.E. certificate. Scott \$1,800. Estimate \$1,000 - 1,500



1375 ★ 5¢ blue, bluish paper (361), o.g., hinged, extremely fresh and attractive example of this incredibly scarce 5 cent bluish paper, with strong color and nice clean gum, without any pencil writing or ink handstamps that often time plague this issue; a remarkable example of this stamp, F.-V.F.; with 1975 and 2002 P.F. certificates. Scott \$5,750. Estimate \$3,500 - 5,000

1376 ★ 6¢ red orange, bluish paper (362), o.g., lightly hinged, wide margins and delightful fresh color; a premium quality example of this terribly difficult and ridiculously undervalued stamp, F.-V.F.; with 1976 P.F. certificate. Scott \$1,250. Estimate \$750 - 1,000



1377 ★ 8¢ olive green, bluish paper (363), o.g., small hinge remnant, handsome example of this immensely rare stamp, with breathtaking rich color and choice centering; among the more pleasing examples available to collectors; reperforated at right, and a partially picked out inclusion in the throat area, otherwise F.-V.F., *less than 80 examples are known to exist*; with 1997 P.F. certificate. Scott \$30,000. Estimate \$7,500 - 10,000

1378 ★ 10¢ yellow, bluish paper (364), o.g., hinged, amazingly fresh radiant color, contrasting on unmistakable bluish paper, a delightful example and one of the finer examples extant, Extremely Fine to Superb; with P.S.E. encapsulated graded XF-SUP 95. Scott \$1,600. SMQ XF-SUP 95; \$3,600. Estimate \$2,500 - 3,500



1379 ★ 13¢ blue green, bluish paper (365), o.g., hinged, wonderfully fresh and choice large margined example with ravishing rich color; much nicer than normally encountered, F.-V.F.; with 1961 and 2006 P.F. certificates. Scott \$2,600. Estimate \$1,500 - 2,000

1380 ★ 15¢ pale ultramarine, bluish paper (366), o.g., lightly hinged, absolutely gorgeous rich color and sharp detailed impression; a pristine example of this stamp with lots of eye appeal, Very Fine; with 1986 P.F. certificate. Scott \$1,250. Estimate \$1,000 - 1,500



1909 Commemorative Issues



1381



1382



1383



1384

- 1381 ★★ 2¢ Lincoln (367)**, o.g., never hinged, outstanding top quality example with gleaming color and clear impression; a great stamp, Extremely Fine to Superb; with 2006 P.F. certificate graded XF-SUP 95. Scott \$10. SMQ **XF-SUP 95**; \$140. Estimate \$100 - 150
- 1382 ★★ 2¢ Lincoln, bluish paper (369)**, o.g., never hinged, wonderful large margined example with gorgeous rich color, a marvelous stamp, Very Fine; with 1991 P.F.C. and 2001 P.S.E. certificates. Scott \$320. Estimate \$250 - 350
- 1383 ★★ 2¢ Alaska-Yukon (370)**, o.g., never hinged, fabulous top quality stamp with wonderful color of great intensity, Extremely Fine to Superb; with 2009 P.S.E. certificate graded XF-SUP 95. Scott \$16. SMQ **XF-SUP 95**; \$135. Estimate \$75 - 100
- 1384 ★★ 2¢ Alaska-Yukon, imperf (371)**, o.g., never hinged, outstanding example achieving the perfect grade of 100 from PSE; with huge boardwalk margins, Superb; with 2008 P.S.E. certificate graded Gem 100. Scott \$32. SMQ **Gem 100**; \$225. Estimate \$150 - 200



- 1385 ★★ 2¢ Hudson-Fulton (372)**, o.g., never hinged, impressive left sheet margins single with huge JUMBO margins, Very Fine to Extremely Fine; with 2008 P.S.E. certificate graded VF-XF 85J. Scott \$21. SMQ **VF-XF 85J**; \$60. Estimate \$50 - 75



- 1386 ★★ 2¢ Hudson-Fulton, imperf (373)**, o.g., never hinged, superior example with king size margins and sterling rich color, simply amazing, Superb; with 2008 P.S.E. certificate graded Gem 100. Scott \$40. SMQ **Gem 100**; \$275. Estimate \$200 - 300

1910-1911 Washington-Franklin Issue, SL Watermark



1387



1388



1389



1390



1391

- 1387 ★ 3¢ deep violet (376)**, o.g., lightly hinged, sensational example of the deep violet shade, featuring outstanding centering amid massive boardwalk margins; one-in-a-million, Extremely Fine to Superb; with 2009 P.S.E. certificate graded XF-SUP 95J. Scott \$20. SMQ **XF-SUP 95J**; \$90. Estimate \$75 - 100
- 1388 ★★ 4¢ brown (377)**, o.g., never hinged, desirable top margin imprint single with wide margins and alluring rich color, Extremely Fine; with 2003 P.F. certificate. Scott \$70. Estimate \$100 - 150
- 1389 ★★ 5¢ blue (378)**, o.g., never hinged, intense color and nicely balanced margins, Very Fine; with 2003 P.F. certificate. Scott \$70. Estimate \$50 - 75
- 1390 ★ 6¢ red orange (379)**, o.g., lightly hinged, the most impressive example we have ever had the pleasure to offer, with gigantic boardwalk margins of epic proportions, and brilliant fresh color without any trace of oxidation; eye catching World Class GEM, Superb; with 1988 P.F. certificate. Scott \$40. Estimate \$500 - 750
- 1391 ★★ 6¢ red orange (379)**, o.g., never hinged, outstanding large margins and scintillating bright color; a gorgeous stamp, Very Fine to Extremely Fine; with 1996 P.F. certificate. Scott \$90. Estimate \$100 - 150



1392



1393



1394

- 1392 ★★ 8¢ olive green (380)**, o.g., never hinged, gorgeous example with bold prooflike color and extremely large margins, Very Fine to Extremely Fine; with 1988 P.F. certificate. Scott \$225. Estimate \$250 - 350
- 1393 ★★ 10¢ yellow (381)**, bottom plate number single, o.g., never hinged, large margined example with vivacious color; a pristine mint stamp, Very Fine; with 1990 P.F. certificate. Scott \$220. Estimate \$200 - 300
- 1394 ★ 15¢ pale ultramarine (382)**, o.g., lightly hinged, select GEM QUALITY example with extra large and wonderfully balanced margins; with heavenly rich color printed on clean white paper; a very scarce stamp in this quality with a conservatively graded certificate of only a 90, Extremely Fine to Superb; with 2005 P.S.E. certificate graded XF 90. Scott \$240. SMQ **XF 90**; \$350. Estimate \$400 - 600



1395



1396



1397

- 1395 ★★ **1¢ green, imperf (383)**, o.g., never hinged, tremendous GEM with huge margins including parts of surrounding 8 stamps, Superb. Scott \$4. Estimate \$50 - 75
- 1396 ★★a **1¢ green, imperf (383)**, center line block of 4, o.g., never hinged, the most impressive GEM quality multiple we have ever offered; tremendous color and huge margins on all sides; destined for the finest collection, Superb; with 2010 P.S.E. certificate graded SUP 98. Scott \$42. Estimate \$100 - 150
- 1397 ★★ **2¢ carmine, imperf (384)**, o.g., never hinged, amazing top left corner margin single with immense margins and gleaming rich color, Superb; with 2008 P.S.E. certificate graded Gem 100. Scott \$7. SMQ **Gem 100**; \$110. Estimate \$75 - 100



1398



1399



1400



1401

- 1398 ★★ **1¢ green, vertical coil (385)**, line pair, o.g., never hinged (natural gum skips), extremely fresh and choice, with bold color, F.-V.F.; with 1979 and 2002 P.F. certificates. Scott \$1,000. Estimate \$300 - 400
- 1399 ★★ **2¢ carmine, vertical coil (391)**, line pair, o.g., never hinged, brilliant fresh both front and reverse with immaculate gum; couple slightly nibbed perfs at top, otherwise Very Fine. Scott \$575. Estimate \$250 - 350
- 1400 ★★ **1¢ green, horizontal coil (392)**, line pair, o.g., never hinged, gorgeous rich color, a pristine multiple in Post Office fresh condition, F.-V.F.; with 2004 P.F. certificate. Scott \$400. Estimate \$250 - 350
- 1401 ★ **2¢ carmine, horizontal coil (393)**, line pair, o.g., hinge remnant, exceedingly fresh and choice multiple, Very Fine; with 2001 A.P.S. certificate. Scott \$300. Estimate \$200 - 300



1402



1403



1404

- 1402 ★★ 3¢ deep violet, horizontal coil (394)**, o.g., never hinged, brilliant fresh color and oversized margins, Extremely Fine; with 2003 P.S.E. certificate for pair, from which this gorgeous stamp was taken, this being the left stamp from the pair. Scott \$135. Estimate \$200 - 300
- 1403 ★★ 4¢ brown, horizontal coil (395)**, line pair, o.g., never hinged, handsome example in marvelous mint condition with full and unblemished gum without a single skip or bend, Fine; with 2002 P.S.E. certificate. Scott \$1,100. Estimate \$300 - 400
- 1404 (★) 5¢ blue, horizontal coil (396)**, pair, regummed, incredibly rich color, a good looking multiple, Very Fine; with 2001 A.P.S. certificate. Scott \$160 for o.g. Estimate \$50 - 75

1913-1915 Panama-Pacific Issue



1405



1406



1407

- 1405 ★★ 2¢ Panama-Pacific, perf 12 (398)**, right plate number single, o.g., never hinged, massive boardwalk margins and ravishing rich color; a tiny natural paper inclusion shows at upper left and certainly had something to do with PSE only giving this stamp a grade of XF-90J, Extremely Fine; with 2008 P.S.E. certificate graded XF 90J. Scott \$40. SMQ **XF 90J**; \$145. Estimate \$100 - 150
- 1406 ★★ 5¢ Panama-Pacific, perf 12 (399)**, o.g., never hinged, fantastic well margined stamp with tantalizing rich color; a great stamp, Very Fine to Extremely Fine; with 2010 P.S.E. certificate graded XF-SUP 95. Scott \$160. SMQ **XF-SUP 95**; \$650. Estimate \$600 - 800
- 1407 ★★ 10¢ Panama-Pacific, perf 12, orange yellow (400)**, o.g., never hinged, marvelously fresh example with virtually perfect centering; a wonderful example in immaculate condition, Extremely Fine. Scott \$270. SMQ **XF 90**; \$550. Estimate \$500 - 750

- 1408 ★★ 10¢ Panama-Pacific, perf 12, orange (400A)**, o.g., never hinged, immaculate both front and back, with full unblemished gum without a single skip or bend, simply gorgeous, Very Fine; with 2003 P.S.E. certificate. Scott \$400. Estimate \$300 - 400



1408



1409



1410



1411



1412

- 1409 ★★** 1¢ **Panama-Pacific, perf 10 (401)**, o.g., never hinged, large margins and bright vivid color; a sensational top quality example, Extremely Fine; with 2009 P.S.E. certificate for block/4, from which it was taken, this being the bottom right stamp from block. Scott \$60. Estimate \$150 - 200
- 1410 ★★** 2¢ **Panama-Pacific, perf 10 (402)**, o.g., never hinged, large margins and brilliant pastel shade; a premium quality mint stamp, Very Fine; with 2000 P.F. certificate. Scott \$170. Estimate \$150 - 200
- 1411 ★** 5¢ **Panama-Pacific, perf 10 (403)**, o.g., barest trace of hinge, marvelous large margined stamp with breathtaking bright color; outstanding showpiece, Extremely Fine to Superb; with 2004 P.S.E. certificate graded XF-SUP 95. Scott \$160. SMQ **XF-SUP 95**; \$325. Estimate \$300 - 400
- 1412 ★★** 10¢ **Panama-Pacific, perf 10 (404)**, o.g., never hinged, premium quality example with the most brilliant fresh color you'll ever see, Very Fine; with 1996 P.F. certificate. Scott \$700. Estimate \$600 - 800

1912-1919 Washington-Franklin Issues



1413



1414



1415

- 1413 ★★** 7¢ **black (407)**, o.g., never hinged, wide margins and lively rich color; a pristine fresh stamp, Very Fine to Extremely Fine; with 1999 P.F. certificate. Scott \$160. Estimate \$150 - 200
- 1414 ★★** 1¢ **green, vertical coil (410)**, line pair, o.g., never hinged, tremendous deep saturated color; an extraordinarily well centered example of this difficult coil, Extremely Fine; with 2006 P.F. certificate. Scott \$65. Estimate \$100 - 150
- 1415 ★★** 2¢ **carmine, vertical coil (411)**, line pair, o.g., never hinged, luscious rich shade; a very impressive example of this terribly elusive genuine coil, Very Fine to Extremely Fine; with 2004 P.F.C. and 2005 P.S.E. certificate graded VF-XF 85. Scott \$125. SMQ **VF-XF 85**; \$165. Estimate \$150 - 200



1416



1417



1418



1419



1420

- 1416 ★ 1¢ green, horizontal coil (412)**, o.g., lightly hinged, large margins and gleaming bright color; an extraordinary coil single that any serious collector knows is scarce in this beautiful condition; throw away the ridiculous Scott catalog value on this one, as this stamp should realize multiples of that price, Extremely Fine; with 2008 P.S.E. certificate graded XF 90. Scott \$25. SMQ **XF 90**; \$45. Estimate \$100 - 150
- 1417 ★★ 2¢ carmine, horizontal coil (413)**, o.g., never hinged, extraordinary example of this often faked coil single; with gorgeous deep rich color; a rare opportunity for the collector wanting an outstanding & genuine #413, Very Fine to Extremely Fine; with 2002 P.F. certificate. Scott \$130. Estimate \$200 - 300
- 1418 ★★ 8¢ pale olive green (414)**, o.g., never hinged, fantastic deep rich color; a lovely large margined stamp with excellent eye appeal, Extremely Fine; with 2008 P.S.E. certificate. Scott \$100. Estimate \$150 - 200
- 1419 ★★ 9¢ salmon red (415)**, o.g., never hinged, brilliant fresh with nice wide margins; a pleasing example, Very Fine; with 1999 P.F. certificate. Scott \$120. Estimate \$100 - 150
- 1420 ★★ 10¢ orange yellow (416)**, o.g., never hinged, well margined stamp with robust color; a stamp for the quality conscious collector, Extremely Fine; with 1998 P.F. certificate. Scott \$100. Estimate \$150 - 200



1421



1422



1423



1424

- 1421 ★ 12¢ claret brown (417)**, o.g., lightly hinged, absolutely gorgeous GEM quality stamp with sterling color and detailed impression, Superb; with 2009 P.S.E. certificate graded SUP 98. Scott \$42. SMQ **SUP 98**; \$275. Estimate \$200 - 300
- 1422 ★★ 15¢ gray (418)**, o.g., never hinged, remarkably fresh example with well balanced margins and heavenly rich color; a GEM that would please the most quality conscious collector, Extremely Fine to Superb; with 2000 P.F. certificate. Scott \$190. Estimate \$350 - 500
- 1423 ★★ 20¢ ultramarine (419)**, bottom plate number single, o.g., never hinged, wide margins and alluring rich color; a flawless example in a wonderful mint state, Very Fine; with 1989 P.F. certificate. Scott \$400. Estimate \$300 - 400
- 1424 ★ 30¢ orange red (420)**, o.g., lightly hinged, vivid and fresh example with strong color, Very Fine; with photocopy of 2003 P.F. certificate for block/4, from which this stamp was taken. Scott \$115. Estimate \$100 - 150



1425



1426



1427

- 1425 ★ 50¢ violet, S.L. watermark (421)**, o.g., very lightly hinged, huge boardwalk margins and lively bright color; an outstanding top quality stamp rarely found in such fabulous condition, Extremely Fine; with 2003 P.F. certificate. Scott \$350. Estimate \$400 - 600
- 1426 ★ 50¢ violet, D.L. watermark (422)**, o.g., lightly hinged, marvelous example featuring boardwalk margins and delightful fresh color; outstanding, Extremely Fine; with 2004 P.S.E. certificate graded XF 90J. Scott \$225. SMQ XF 90J; \$400. Estimate \$350 - 500
- 1427 ★ \$1 violet brown (423)**, o.g., hinged, gorgeous example with excellent balanced margins and the deepest and richest color imaginable, Very Fine to Extremely Fine; with 2006 P.S.E. certificate. Scott \$475. Estimate \$350 - 500



1428



1429



1430



1431



1432

- 1428 ★★ 3¢ deep violet (426 var.)**, o.g., never hinged, huge JUMBO with brilliant color; an eye catching show-piece rarely found with such remarkable qualities, Extremely Fine to Superb; with 2006 P.S.E. certificate graded XF-SUP 95J. Scott \$32. SMQ XF-SUP 95J; \$475. Estimate \$350 - 500
- 1429 ★ 4¢ brown (427)**, o.g., barest trace of hinge, sensational color and impression; a very handsome top quality stamp, Extremely Fine; with 2003 P.F. certificate. Scott \$32. Estimate \$75 - 100
- 1430 ★★ 6¢ red orange (429)**, bottom plate number single, o.g., never hinged, Post Office fresh example with brilliant color printed on clean white paper, Very Fine; with 2006 P.S.E. certificate. Scott \$105. Estimate \$100 - 150
- 1431 ★ 7¢ black (430)**, o.g., barest trace of hinge, intense color; a very attractive example of this difficult stamp, Very Fine; with 1997 P.F. certificate specifically describing this stamp as never hinged. Scott \$90. Estimate \$75 - 100
- 1432 ★★ 9¢ salmon red (432)**, o.g., never hinged, awesome fresh example of this tough stamp, with vivid color and clear impression, Extremely Fine; with 1996 P.F.C. and 2006 P.F. certificate graded XF 90. Scott \$105. SMQ XF 90; \$250. Estimate \$200 - 300



1433



1434



1435



1436



1437

- 1433 ★ 10¢ orange yellow (433)**, o.g., lightly hinged, deep color, a lovely example of this tough stamp, Extremely Fine; with 1999 P.F. certificate. Scott \$45. Estimate \$50 - 75
- 1434 ★★ 12¢ claret brown (435)**, o.g., never hinged, bold color and sharp clear impression; very impressive, Extremely Fine; with 2002 P.F. certificate. Scott \$60. Estimate \$100 - 150
- 1435 ★★ 12¢ copper red (435a)**, o.g., never hinged, gleaming fresh example of this desirable color variety, with immaculate fresh gum with mirror like impression, Very Fine; with 1998 P.S.E. certificate. Scott \$72. Estimate \$100 - 150
- 1436 ★★ 20¢ ultramarine (438)**, o.g., never hinged, vivid bright shade, an extremely fresh stamp, F.-V.F.; with 2008 P.S.E. certificate. Scott \$430. Estimate \$200 - 300
- 1437 ★★ 30¢ orange red (439)**, o.g., never hinged, splendid mint stamp with dynamite rich color; unbelievably fresh, Very Fine to Extremely Fine; with 2008 P.S.E. certificate graded VF-XF 85. Scott \$500. SMQ **VF-XF 85**; \$750. Estimate \$600 - 800



1438



1439



1440

- 1438 ★ 50¢ violet (440)**, o.g., lightly hinged, wonderfully fresh and choice top quality stamp with superior centering and nifty color; quite elusive when found with such beautiful centering and margins, Extremely Fine; with 2006 P.F. certificate graded XF 90. Scott \$450. SMQ **XF 90**; \$650. Estimate \$600 - 800
- 1439 ★★ 1¢ green, vertical flat plate coil (441)**, line pair, o.g., never hinged, tremendous top quality example with incredibly deep rich color, simply outstanding, Extremely Fine; with 2006 P.S.E. certificate graded XF 90. Scott \$17. SMQ **XF 90**; \$260. Estimate \$150 - 200
- 1440 ★ 2¢ carmine, horizontal flat plate coil (444)**, line pair, o.g., lightly hinged (pencil mark on gum), deep rich color, an elusive coil issue, F.-V.F.; with 2003 P.S.E. certificate. Scott \$300. Estimate \$100 - 150



1441



1442



1443

- 1441 ★ 3¢ violet, horizontal flat plate coil (445),** line pair, o.g., lightly hinged, handsome example with exquisite rich color and sharp detailed impression, F.-V.F.; with 1995 P.F. certificate. Scott \$1,200. Estimate \$750 - 1,000
- 1442 ★ 4¢ brown, horizontal flat plate coil (446),** pair, o.g., lightly hinged, tremendous GEM quality coil with outstanding centering and impeccably fresh color; simply extraordinary multiple destined for a collection of distinction, Extremely Fine to Superb; with 2005 P.S.E. certificate graded XF-SUP 95. Scott \$300. SMQ **XF-SUP 95**; \$875. Estimate \$750 - 1,000
- 1443 ★ 5¢ blue, horizontal flat plate coil (447),** line pair, o.g., lightly hinged, bold prooflike color; a very handsome example of this tough coil issue, Very Fine to Extremely Fine; with 2006 P.S.E. certificate graded VF-XF 85. Scott \$240. SMQ **VF-XF 85**; \$275. Estimate \$200 - 300



1444



1445



1446

- 1444 ★★ 2¢ carmine, type III, vertical rotary coil (450),** line pair, o.g., never hinged, decent example of this terribly difficult line pair, much nicer than normally encountered as this issue is most times found badly cut in on both stamps; on this attractive multiple the bottom stamp is well clear of the perfs and the top stamp just touches, Fine; with 2006 P.S.E. certificate. Scott \$550. Estimate \$150 - 200
- 1445 ★★ 1¢ green, horizontal rotary coil (452),** pair, o.g., never hinged, magnificent coil with fantastic rich color, Extremely Fine; with 2006 P.F. certificate graded XF 90. Scott \$55. SMQ **XF 90**; \$100. Estimate \$100 - 150
- 1446 ★★ 1¢ green, horizontal rotary coil (452),** pair, o.g., never hinged, unusually large margins; Post Office fresh multiple, Very Fine to Extremely Fine; with 2005 P.F. certificate. Scott \$55. Estimate \$75 - 100



1447



1448

- 1447 ★★ **2¢ carmine rose, type I, horizontal rotary coil (453)**, o.g., never hinged, fantastic rich shade; a pristine example of this extremely undervalued coil that should catalog for more than its modest \$300 Scott value, F.-V.F.; with 1990 P.F. certificate for strip/4, from which this stamp was taken. Scott \$300. Estimate \$150 - 200
- 1448 ★★ **2¢ carmine rose, type I, horizontal rotary coil (453)**, line pair, o.g., never hinged (minor gum bend), fresh and pleasing example of this terribly difficult type I line pair, especially in never hinged condition, Fine; with 2004 P.F. certificate. Scott \$1,450. Estimate \$400 - 600



- 1449 ★★ **2¢ carmine, type III, horizontal rotary coil (455)**, line strip of 4, o.g., never hinged, impressive multiple with vibrant rich color; pristine Post Office fresh condition, Very Fine; with 1989 P.F. certificate. Scott \$141. Estimate \$100 - 150



1450



1451



1452

- 1450 ★ **3¢ violet, horizontal rotary coil (456)**, o.g., lightly hinged, remarkably well centered coil single with heavenly rich color, Extremely Fine. Scott \$225. Estimate \$250 - 350
- 1451 ★★/★ **5¢ blue, horizontal rotary coil (458)**, line pair, right stamp o.g., hinged, left stamp never hinged, extremely intense color, a very impressive coil, Very Fine; with 1991 P.F. certificate. Scott \$180. Estimate \$150 - 200
- 1452 ★ **2¢ carmine, imperf horizontal coil (459)**, pair, o.g., very lightly hinged, sensational multiple with an incredible depth of color, about as perfectly centered as one could imagine, Superb; with 1985 P.F. certificate. Scott \$375. Estimate \$350 - 500



1453



1454

- 1453 ★ \$1 violet black, D.L. watermark, perf 10 (460)**, dark rich color within large balanced margins, o.g., lightly hinged, visually pleasing example, Extremely Fine; with P.S.E. encapsulated graded XF 90. Scott \$650. SMQ **XF 90**; \$850. Estimate \$600 - 800
- 1454 ★★ 2¢ pale carmine red, S.L. watermark, perf 11 (461)**, o.g., never hinged (minor gum creases), lovely example of this tough stamp, with beautiful fresh color, F.-V.F.; with 1999 P.F. certificate. Scott \$325. Estimate \$100 - 150

Perf. 10, Unwatermarked



1455



1456



1457



1458



1459

- 1455 ★★ 2¢ carmine (463)**, o.g., never hinged, perfect little GEM with immaculate and unblemished gum, Extremely Fine to Superb; with 2007 P.S.E. certificate graded XF-SUP 95. Scott \$10. SMQ **XF-SUP 95**; \$150. Estimate \$100 - 150
- 1456 ★★ 3¢ violet (464)**, o.g., never hinged, tremendous top quality example of this elusive stamp, with extra large margins and lively bright color; a beauty, Extremely Fine; with 1987 P.F. certificate. Scott \$175. Estimate \$350 - 500
- 1457 ★★ 4¢ orange brown (465)**, o.g., never hinged, impressive wide margined example with ravishing rich color, Extremely Fine; with 2004 P.F. certificate. Scott \$90. Estimate \$150 - 200
- 1458 ★★ 5¢ blue (466)**, o.g., never hinged, extremely intense color; a pristine mint example, Very Fine; with 2001 P.F. certificate. Scott \$160. Estimate \$100 - 150
- 1459 ★ 5¢ carmine error (467)**, o.g., hinged, magnificent GEM quality example of this elusive perf 10 error of color, featuring extra large margins and dynamite color; woefully undervalued in this condition and could easily sell for over \$1000 when the gavel falls at public auction, Extremely Fine to Superb; with 2006 P.S.E. certificate graded XF-SUP 95. Scott \$450. SMQ **XF-SUP 95**; \$850. Estimate \$750 - 1,000



1460



1461



1462



1463



1464

- 1460 ★★ 6¢ red orange (468)**, o.g., never hinged, absolutely gorgeous top quality example of this notoriously difficult stamp; a beautifully centered example with fiery rich color and gleaming fresh gum without a single skip or bend; a tremendous showpiece, Extremely Fine; with 2000 P.F.C. and 2011 P.F. certificate graded XF 90. Scott \$190. SMQ **XF 90**; \$450. Estimate \$400 - 600
- 1461 ★★ 7¢ black (469)**, o.g., never hinged, handsome large margined bottom margin single that is impeccably fresh without a single skip or bend; just a great stamp, Very Fine; with 1990 P.F.C. and 2006 P.S.E. certificate. Scott \$270. Estimate \$250 - 350
- 1462 ★★ 8¢ olive green (470)**, bottom plate number single, o.g., never hinged, extremely large margins and mouthwatering deep rich color, simply gorgeous, Very Fine to Extremely Fine; with 1991 P.F. certificate. Scott \$125. Estimate \$150 - 200
- 1463 ★★ 9¢ salmon red (471)**, o.g., never hinged, incredibly fresh and choice example of this tough stamp, a pristine stamp, Very Fine to Extremely Fine; with 2007 P.S.E. certificate graded VF-XF 85. Scott \$125. SMQ **VF-XF 85**; \$175. Estimate \$150 - 200
- 1464 ★ 10¢ orange yellow (472)**, o.g., very lightly hinged, extraordinary top quality example with delightful rich color and evenly balanced margins, Extremely Fine to Superb. Scott \$100. SMQ **XF-SUP 95**; \$275. Estimate \$250 - 350



1465



1466



1467

- 1465 ★★ 11¢ dark green (473)**, o.g., never hinged, remarkably fresh and choice example with full long perforations all around, Extremely Fine; with 2005 P.S.E. certificate graded XF 90. Scott \$90. SMQ **XF 90**; \$225. Estimate \$200 - 300
- 1466 ★★ 12¢ claret brown (474)**, o.g., never hinged, nicely centered stamp with intense color; two improved perforation holes at bottom left, otherwise Extremely Fine; with 2010 P.S.A.G. certificate. Scott \$115. Estimate \$50 - 75
- 1467 ★★ 15¢ gray (475)**, o.g., never hinged, outstanding showpiece that is particularly well centered with extra large margins, with vivacious color and detailed impression; among the most difficult values of the set to find in choice mint condition, a true condition rarity that should receive spirited bidding, Extremely Fine; with 1999 P.F. certificate. Scott \$400. Estimate \$600 - 800



1468



1469



1470



1471



1472

1468 ★ 20¢ light ultramarine (476), o.g., lightly hinged, an amazing example of this difficult stamp, featuring unusually large margins and alluring color printed on stark white paper; a true GEM, Extremely Fine to Superb; with 1999 P.F.C. and 2005 P.S.E. certificate graded XF-SUP 95. Scott \$225. SMQ **XF-SUP 95**; \$550.

Estimate \$500 - 750

1469 ★ 50¢ light violet (477), o.g., very lightly hinged, refreshing well centered example of this tough unwatermarked stamp, much nicer than the PSE graded certificate of VF-80 would indicate; with nicely balanced margins and resplendent color; just a great stamp, Very Fine; with 1984 A.P.S. and 2006 P.S.E. certificate graded VF 80. Scott \$900. SMQ **VF 80**; \$900.

Estimate \$1,000 - 1,500

1470 ★ \$1 violet black (478), o.g., very lightly hinged, uniquely appealing example with enormous JUMBO margins and tantalizing rich color on clean white paper; among the most outstanding examples obtainable of this stamp, Extremely Fine; with 1991 P.F.C. and 2006 P.S.E. certificate graded XF 90J. Scott \$625. SMQ **XF 90J**; \$900.

Estimate \$1,000 - 1,500

1471 ★ \$2 dark blue (479), o.g., hinged, sensational deep color and sharp clearly etched impression, Extremely Fine; with 2006 P.S.E. certificate graded XF 90. Scott \$210. SMQ **XF 90**; \$300.

Estimate \$200 - 300

1472 ★ \$5 light green (480), o.g., lightly hinged, desirable example with lively bright color, F.-V.F.; with 2007 P.S.E. certificate. Scott \$170.

Estimate \$100 - 150



1473



1474



1475

1473 ★★ 1¢ green, imperf (481), o.g., never hinged, gorgeous JUMBO showing substantial portions of adjacent 8 stamps; unlisted in SMQ pricing guide above the grade of GEM-100; this 100J is an amazing stamp, Superb; with 2007 P.S.E. certificate graded Gem 100J. SMQ **Gem 100J**; \$75.

Estimate \$100 - 150

1474 ★★ 2¢ carmine, type I, imperf (482), o.g., never hinged, immense margins of epic proportions; an eye catching World Class GEM showing large portions of surrounding 8 stamps; unlisted in the SMQ pricing guide above the grade of GEM-100; this 100J is matchless, Superb; with 2007 P.S.E. certificate graded Gem 100J. Scott \$2. SMQ **Gem 100J**; \$75.

Estimate \$100 - 150

1475 ★★ 3¢ violet, type I, imperf (483), o.g., never hinged, eye catching showpiece with evenly balanced JUMBO margins; a perfect GEM without a single skip or bend, Superb. Scott \$22.

Estimate \$100 - 150



1476



1477



1478

1476 ★★ **3¢ violet, type II, imperf (484)**, o.g., never hinged, awesome well margined example with intense color; a true GEM, Superb; with 2006 P.S.E. certificate graded Gem 100. Scott \$18. SMQ **Gem 100**; \$90.

Estimate \$100 - 150

1477 ★★ **2¢ carmine, type II, vertical coil (487)**, line pair, o.g., never hinged, splendid high quality example of this tough coil issue, with delightful rich color, Very Fine; with 1987 A.P.S. certificate. Scott \$275.

Estimate \$150 - 200

1478 ★★ **1¢ green, horizontal coil (490)**, line pair, o.g., never hinged, remarkable top quality example cut from the coil roll with scissors showing parts of adjoining stamps at both sides, Extremely Fine to Superb; with 2005 P.S.E. certificate graded XF-SUP 95. Scott \$7. SMQ **XF-SUP 95**; \$175.

Estimate \$100 - 150



1479



1480



1481

1479 ★★ **3¢ violet, type II, horizontal coil (494)**, line pair, o.g., never hinged, deep dark color, much more intense than normally encountered on this issue, F.-V.F.; with 1988 P.F. certificate. Scott \$160.

Estimate \$100 - 150

1480 ★★ **4¢ orange brown, horizontal coil (495)**, line pair, o.g., never hinged, Post Office fresh and choice, F.-V.F.; with 2005 P.S.E. certificate. Scott \$160.

Estimate \$100 - 150

1481 ★★ **5¢ blue, horizontal coil (496)**, line pair, o.g., never hinged, handsome multiple with vivid color, Extremely Fine; with 2007 P.S.E. certificate graded XF 90. Scott \$65. SMQ **XF 90**; \$145.

Estimate \$100 - 150

Perf. 11, Unwatermarked



1482



1483



1484



1485



1486

- 1482 ★★** 1¢ green (498), o.g., never hinged, matchless example with enormous margins and ravishing color; a wonderful showpiece, Superb; with 2008 P.S.E. certificate graded SUP 98J. Scott \$1. SMQ **SUP 98J**; \$325. Estimate \$300 - 400
- 1483 ★★** 1¢ green (498), o.g., never hinged, desirable top quality stamp with exceptional centering, Extremely Fine to Superb; with 2006 P.S.E. certificate graded XF-SUP 95. SMQ **XF-SUP 95**; \$90. Estimate \$75 - 100
- 1484 ★★** 2¢ rose, type I (499), o.g., never hinged, incredibly large margined stamp with super intense color; simply extraordinary, Extremely Fine to Superb; with 2007 P.S.E. certificate graded XF-SUP 95. Scott \$1. SMQ **XF-SUP 95**; \$90. Estimate \$75 - 100
- 1485 ★★** 4¢ brown (503), o.g., never hinged, awesome example with big fat margins unlike anything we have ever seen on this issue; incredibly fresh eye catching stamp, Extremely Fine; with 2001 P.F.C. and 2007 P.F. certificate graded XF 90J. Scott \$20. SMQ **XF 90J**; \$85. Estimate \$75 - 100
- 1486 ★★** 5¢ blue (504), o.g., never hinged, tremendous top quality example with deep prooflike color; simply amazing, Extremely Fine to Superb; with 2008 P.S.E. certificate graded XF-SUP 95. Scott \$18. SMQ **XF-SUP 95**; \$165. Estimate \$150 - 200



- 1487 ★★a** 5¢ rose error (505), the single error in a block of 9, o.g., never hinged (minor gum bend), gorgeous mint block with fabulous color and choice centering; difficult to find with all 9 stamps in mint condition, Very Fine; with 2005 P.F. certificate. Scott \$1,000. Estimate \$750 - 1,000



- 1488** ○ **10¢ orange yellow (510)**, neat registry cancellation, the “ultimate” used example of this stamp; perfectly centered amid enormous JUMBO margins; with fabulous rich color; unlisted in SMQ’s pricing guide above the grade of GEM-100, this stamp would be an outstanding addition to any great collection; it is obviously the top of PSE’s population report and shares this coveted grade with just one other example; a world class stamp that will certainly realize a record price when the gavel falls at public auction, Superb; with 2009 P.S.E. certificate graded Gem 100J. Scott \$1. SMQ **Gem 100J**; \$750. Estimate \$750 - 1,000



1489



1490



1491



1492

- 1489** ★★ **11¢ light green (511)**, o.g., never hinged, tremendous top quality example with awesome color, Extremely Fine to Superb; with 2008 P.S.E. certificate graded XF-SUP 95. Scott \$18. SMQ **XF-SUP 95**; \$150. Estimate \$100 - 150
- 1490** ★ **12¢ brown carmine and 13¢ apple green (512a, 513)**, o.g., lightly hinged, tremendous JUMBO margined examples, each with exuberant color; a must have for any collector looking for GEM quality stamps that don’t mind light hinge marks, Extremely Fine to Superb; each stamp with 2007 P.S.E. certificate graded XF-SUP 95J. Scott \$19. SMQ **XF-SUP 95J**; \$145. Estimate \$100 - 150
- 1491** ★★ **20¢ light ultramarine (515)**, o.g., never hinged, left sheet margin single with incredibly wide margins, Very Fine; with 2001 P.F. certificate. Scott \$100. Estimate \$75 - 100
- 1492** ★★ **30¢ orange red (516)**, o.g., never hinged, handsome bottom sheet margin single with vibrant color, Very Fine to Extremely Fine; with 2007 P.S.E. certificate graded VF-XF 85. Scott \$70. SMQ **VF-XF 85**; \$100. Estimate \$75 - 100

1918-1923 Issues



1493



1494



1495



1496

- 1493 ★★** 2¢ carmine, D.L. watermark, perf 11 (519), o.g., never hinged, incredibly fresh and choice example in immaculate mint state; a handsome example of this tough stamp, F.-V.F.; with 1996 P.F. certificate. Scott \$850. Estimate \$400 - 600
- 1494 ★★** \$2 orange red & black (523), o.g., never hinged, good looking example in pristine mint condition, with unblemished gum without a single skip or bend; a Post Office fresh stamp, Very Fine; with 2003 P.S.E. certificate. Scott \$1,150. Estimate \$750 - 1,000
- 1495 ★★** 3¢ violet, Offset, type III, double impression (529a), o.g., never hinged, quite possible the finest known example of this rarely offered double impression, with an incredible depth of color and near perfect centering; this stamp changes hands so infrequently it isn't listed in the SMQ pricing guide; and is many times scarcer than it's type IV counterpart that appears on the marketplace quite frequently; whatever you think this stamp will bring - double it, as it's a true GEM deserving placement in the finest collection, Extremely Fine to Superb; with 2006 P.S.E. certificate graded XF-SUP 95. Scott \$100. Estimate \$500 - 750
- 1496 ★★** 3¢ purple, Offset, type IV (530), o.g., never hinged, dazzling color and clear impression, a beauty, Extremely Fine to Superb; with 2007 P.S.E. certificate graded XF-SUP 95. Scott \$4. SMQ **XF-SUP 95**; \$85. Estimate \$75 - 100



1497



1498



1499

- 1497 ★★** 2¢ carmine rose, Offset imperf, type IV (532), left plate number single, o.g., never hinged, huge margins and gleaming bright color; an exemplary showpiece that isn't listed in SMQ pricing guide above the grade of GEM-100; destined for a collection of distinction, Superb; with 2005 P.S.E. certificate graded Gem 100J. Scott \$70. SMQ **Gem 100J**; \$400. Estimate \$300 - 400
- 1498 ★** 2¢ carmine, Offset imperf, type V (533), o.g., barest trace of hinge, top quality example with bright color and an invisible hinge mark, as this stamp could easily pass as Never Hinged, Extremely Fine to Superb; with 1999 P.F. certificate. Scott \$85. Estimate \$100 - 150
- 1499 ★** 2¢ carmine, Offset imperf, type V (533), o.g., very lightly hinged, vivid and fresh example with big margins all around, Extremely Fine. Scott \$85. Estimate \$75 - 100



1500



1501



1502

1500 ★★ 2¢ carmine, Offset imperf, type V (533), pair, o.g., never hinged, tremendous GEM quality multiple with gleaming fresh gum, without a single skip or bend; a condition rarity, Superb; with photocopy of 1991 P.F. certificate for block/4, from which this pair was taken. Scott \$400. Estimate \$350 - 500

1501 ★★ 2¢ carmine, Offset imperf, type VI (534A), pair with vertical guide line between stamps, o.g., never hinged, perfect GEM quality example of this tough World War I issue, as the paper was of inferior quality, so finding a top quality multiple like this is quite difficult, Superb; with 2007 P.F. certificate. Scott \$160. Estimate \$150 - 200

1502 ○ 2¢ carmine, Offset imperf, type VII (534B), neat black town cancellation, fabulous deep rich color; an extraordinary example of the rarely offered used type VII stamp, missing from most collections, Extremely Fine to Superb; with 2000 A.P.S. certificate. Scott \$1,400. Estimate \$1,000 - 1,500



1503



1504



1505

1503 ★★ 3¢ Victory (537), o.g., never hinged, perfect little GEM in the soft pastel shade, equally balanced margins, a great stamp, Superb; with 2005 P.S.E. certificate graded SUP 98. Scott \$20. SMQ **SUP 98**; \$275. Estimate \$200 - 300

1504 ★★ 3¢ Victory, deep red violet shade (537a), o.g., never hinged, rarely offered example of the deep red violet shade in a wonderful state of preservation; a handsome right sheet margin single that infrequently makes an appearance at public auction, Fine; with 1990 P.F. certificate. Scott \$2,300. Estimate \$1,000 - 1,500

1505 ★★ 1¢ green, rotary coil waste, perf 11 x 10 (538), o.g., never hinged, tremendous example of this difficult coil waste issue that is rare in this condition, with big broad margins and gleaming fresh color, this is 1 of only 10 examples to achieve the grade of Sup-98 according to PSE's population report with 3 others grading higher, Superb; with 2004 P.S.E. certificate graded SUP 98. Scott \$23. SMQ **SUP 98**; \$750. Estimate \$500 - 750



1506



1507



1508

1506 ○a **1¢ green, rotary coil waste, perf 11 x 10, imperf horizontally (538a)**, block of 4, interesting “New York” straight line cancellations, well centered multiple with brilliant color, Extremely Fine appearance; with 2009 P.S.E. certificate that declines opinion of the genuineness of the cancellation. Scott \$300 for genuinely used.

Estimate \$100 - 150

1507 ★★ **1¢ green, rotary coil waste, perf 10 x 11 (543)**, o.g., never hinged, outstanding example; a very common stamp in an extremely uncommon condition, Extremely Fine to Superb; with 2005 P.S.E. certificate graded XF-SUP 95. Scott \$2. SMQ **XF-SUP 95**; \$85.

Estimate \$75 - 100

1508 ○ **1¢ green, rotary sheet waste, perf 11 (544)**, wavy black machine cancellation, extremely attractive example of this rarely offered rotary sheet waste stamp, with exceptionally wide margins and brilliant fresh color; lightly signed on reverse in pencil by “Geo. B. Sloane”, indicating that this was an original discovery from the Johl collection; a wonderful opportunity to acquire a handsome example of this scarce stamp and one that comes with an interesting story; hint of a tiny hinge thin at top only shows in fluid, and is not mentioned on the accompanying certificate, otherwise Fine; with clear 1945 A.P.S. certificate. Scott \$3,750 in the grade of “Fine”.

Estimate \$1,500 - 2,000



1509



1510



1511

1509 ★★ **1¢ green, rotary coil waste, perf 11 (545)**, o.g., never hinged, immaculate mint example with impeccably fresh color; much nicer than normally encountered on this tough issue, F.-V.F.; with 2006 P.S.E. certificate. Scott \$400.

Estimate \$250 - 350

1510 ★★ **2¢ carmine rose, rotary coil waste, perf 11 (546)**, o.g., never hinged, an incredibly huge example of this normally “tight” margined issue; an impressive bottom sheet margin single featuring JUMBO margins of epic proportions and radiant color, Very Fine to Extremely Fine; with 1991 P.F. certificate. Scott \$230.

Estimate \$200 - 300

1511 ★ **\$2 carmine & black (547)**, o.g., lightly hinged, beautifully centered stamp with bold colors; conservatively graded at only VF-XF-85 which is ridiculous, Very Fine to Extremely Fine; with 2007 P.S.E. certificate graded VF-XF 85. Scott \$125. SMQ **VF-XF 85**; \$150.

Estimate \$150 - 200

1922-1925 Regular Issue



1512



1513



1514



1515

- 1512 ★★ 1¢ deep green (552)**, right plate number single, o.g., never hinged, gorgeous example with extra large margins and brilliant color; a very common stamp in a very uncommon condition, Superb; with 2010 P.S.E. certificate. Scott \$3. Estimate \$75 - 100
- 1513 ★★ 3¢ violet (555)**, o.g., never hinged, nice big margins and luscious color, a great stamp, Extremely Fine to Superb; with 1997 P.F. certificate. Scott \$30. Estimate \$75 - 100
- 1514 ★★ 6¢ red orange (558)**, o.g., never hinged, tremendous color and impression, a marvelous GEM quality stamp, this is 1 of only 10 examples attaining this impressive grade, with but 3 others currently grading higher according to PSE's population report, Superb; with 2007 P.S.E. certificate graded SUP 98. Scott \$70. SMQ **SUP 98**; \$1,200. Estimate \$600 - 800
- 1515 ★★ 8¢ olive green (560)**, o.g., never hinged, fabulous top quality example of this surprisingly difficult stamp; with intense color and mirror like impression; rarely is this stamp found in the grade of 95, Extremely Fine to Superb; with 2010 P.S.E. certificate graded XF-SUP 95. Scott \$90. SMQ **XF-SUP 95**; \$325. Estimate \$250 - 350



1516



1517



1518



1519

- 1516 ★★/★ 10¢ orange (562)**, o.g., hinged or never hinged, marvelous example with an incredible depth of color; amazing condition for this issue, Extremely Fine to Superb; with 2010 P.S.E. certificate. Scott \$32. Estimate \$100 - 150
- 1517 ★★ 12¢ brown violet (564)**, o.g., never hinged, spectacular bottom sheet margin single with enormous JUMBO margins, Superb; with 2010 P.S.E. certificate. Scott \$11. Estimate \$100 - 150
- 1518 ★★ 15¢ gray (566)**, o.g., never hinged, exceptional example with robust color and desirable large margins, Extremely Fine to Superb; with 2010 P.S.E. certificate graded XF-SUP 95. Scott \$37. SMQ **XF-SUP 95**; \$175. Estimate \$150 - 200
- 1519 ★★ 20¢ carmine rose (567)**, o.g., never hinged, absolutely stunning example with huge boardwalk margins and the deepest and richest color imaginable; the quintessential example of this stamp deserving placement in the finest collection, Superb; with 2007 P.S.E. certificate graded SUP 98J, 1 of 12 at this grade, with only 6 others currently grading higher. Scott \$37. SMQ **SUP 98J**; \$1,100. Estimate \$1,000 - 1,500



1520



1521

- 1520 ★★ 30¢ olive brown (569)**, o.g., never hinged, an impressive bottom sheet margin single with gleaming rich color, Extremely Fine; with 2006 P.S.E. certificate. Scott \$55. Estimate \$75 - 100
- 1521 ★★ \$1 violet black (571)**, o.g., never hinged, a most impressive example with captivating color and clear impression, Extremely Fine to Superb; with 2008 P.S.E. certificate graded XF-SUP 95. Scott \$80. SMQ **XF-SUP 95**; \$215. Estimate \$200 - 300



- 1522 ★★ \$5 carmine & blue (573)**, o.g., never hinged, sterling example featuring big boxy margins all around and breathtaking rich colors; certainly the cream of the crop when it comes to obtaining a stunning #573, Superb; with 2007 P.S.E. certificate graded SUP 98. Scott \$190. SMQ **SUP 98**; \$1,150. Estimate \$1,000 - 1,500

1923-1944 Issues



- 1523 ★★ 1923, 2¢ carmine, imperf (577)**, o.g., never hinged, incredible example with giant size margins and rich color; for the collector who collects the finest, Superb; with 2004 P.S.E. certificate graded Gem 100J. Scott \$3. SMQ **Gem 100J**; \$100. Estimate \$75 - 100



1524



1525



1526



1527

- 1524 ★★** 1923, 1¢ green, rotary coil waste (578), o.g., never hinged, vivid color and clear impression, a very pleasing example of this tough coil waste issue, Very Fine to Extremely Fine; with 2007 P.S.E. certificate. Scott \$160. Estimate \$150 - 200
- 1525 ★★** 1923, 2¢ carmine, rotary coil waste (579), o.g., never hinged, astounding rich color and extremely wide margins; a beautiful example of this coil waste issue, Extremely Fine. Scott \$150. SMQ **XF 90**; \$325. Estimate \$250 - 350
- 1526 ★★** 1925, 4¢ yellow brown, rotary (585), o.g., never hinged, impressive top quality stamp with lively bright color and sharp detailed impression, Extremely Fine to Superb; with 2007 P.S.E. certificate graded XF-SUP 95. Scott \$37. SMQ **XF-SUP 95**; \$250. Estimate \$200 - 300
- 1527 ★★** 1926, 8¢ olive green, rotary (589), o.g., never hinged, brilliant fresh example with unusually rich color, Extremely Fine; with 2007 P.S.E. certificate graded XF 90. Scott \$60. SMQ **XF 90**; \$100. Estimate \$75 - 100



- 1528 ★★** 1926, 9¢ rose, rotary (590), o.g., never hinged, the most impressive example we have ever had the pleasure to offer; a striking top sheet margin single with dead-on perfect centering and bodacious rich color; a matchless World Class GEM deserving placement in a collection of distinction; this is 1 of only 3 examples to attain this coveted grade of GEM-100 and is the TOP-OF-THE-POP, Superb; with 2007 P.S.E. certificate graded Gem 100. Scott \$13. SMQ **Gem 100**; \$1,175. Estimate \$750 - 1,000



- 1529 ★★** 1925, 10¢ orange, rotary (591), o.g., never hinged, immeasurably choice GEM QUALITY example with broad margins and astounding rich color; among the most pleasing examples we have ever had the pleasure to offer; this being 1 of only 10 examples attaining the impressive grade of Sup-98, with only 1 other currently grading higher, Superb; with 2004 P.S.E. certificate graded Gem 100. Scott \$90. SMQ **SUP 98**; \$1,275. Estimate \$1,000 - 1,500



1530



1531



1532

- 1530 ★★** 1923, 2¢ carmine, rotary coil waste (595), o.g., never hinged, extremely fresh and choice example with outstanding rich color; a premium example of this tough stamp, F.-V.F.; with 2006 P.S.E. certificate graded F-VF 75. Scott \$475. SMQ **F-VF 75**; \$285. Estimate \$250 - 350
- 1531 ★★** 1923, 1¢ green, horizontal coil (597), line pair, o.g., never hinged, absolutely gorgeous coil with bold prooflike color; quite elusive when found this nice, Extremely Fine to Superb; with 2010 P.S.E. certificate graded XF-SUP 95. Scott \$2. SMQ **XF-SUP 95**; \$220. Estimate \$150 - 200
- 1532 ★★** 1923, 2¢ carmine, horizontal coil, type I (599), line pair, o.g., never hinged, extremely intense color and sharp clear impression, Extremely Fine to Superb; with 2007 P.S.E. certificate graded XF-SUP 95. Scott \$1. SMQ **XF-SUP 95**; \$200. Estimate \$100 - 150



1533



1534



1535

- 1533 ★★** 1924, 3¢ violet, horizontal coil (600), pair, o.g., never hinged, tremendous top quality multiple with fantastic color, Extremely Fine to Superb; with 2007 P.S.E. certificate graded XF-SUP 95. Scott \$26. SMQ **XF-SUP 95**; \$130. Estimate \$100 - 150
- 1534 ★★** 1924, 10¢ orange, horizontal coil (603), pair, o.g., never hinged, spectacular coil with perfect centering and brilliant color; much more difficult to find in this stunning condition than one would imagine; a true GEM, Superb; with 2007 P.S.E. certificate graded SUP 98. Scott \$16. SMQ **SUP 98**; \$350. Estimate \$250 - 350
- 1535 ★★** 1923, 2¢ carmine lake, vertical coil (606a), line pair, o.g., never hinged, fabulous rich shade; a very impressive coil pair showing a small portion of the plate number showing along the left side of the top stamp, F.-V.F.; with 2006 P.S.E. certificate. Scott \$775. Estimate \$400 - 600



1536



1537



1538

- 1536 ★★** 1923, 2¢ Harding, imperf (611), o.g., never hinged, enormous JUMBO showing surrounding 8 stamps; gleaming fresh both front and reverse without a single skip or bend, Superb. Scott \$9. Estimate \$75 - 100
- 1537 ★★** 1925, Lexington-Concord complete (617-619), o.g., never hinged, gorgeous and fresh set with an extra #619 in a grade of 90, 617 is also a 90, Extremely Fine to Superb; each with 2008/2010 P.S.E. certificate graded XF-SUP 95 or XF 90. SMQ **XF-SUP 95**; \$250. Estimate \$150 - 200
- 1538 ★★** 1926, 2¢ Sesquicentennial Exposition (627), o.g., never hinged, awesome GEM quality example featuring JUMBO margins and sensual rich color; an amazing showpiece, Superb; with 2009 P.S.E. certificate graded SUP 98J. Scott \$4. SMQ **SUP 98J**; \$210. Estimate \$200 - 300



1539



1540



1541



1542

- 1539 ★★** 1926, 5¢ Ericsson (628), o.g., never hinged, gorgeous left sheet margin single; an unusually attractive top quality stamp with large even margins and prodigious color; just a great stamp, Superb; with 2006 P.S.E. certificate graded SUP 98. Scott \$9. SMQ **SUP 98**; \$190. Estimate \$150 - 200
- 1540 ★★** 1926, 1½¢ yellow brown, rotary imperf (631), bottom right plate number single, o.g., never hinged, huge margined GEM; an immaculate World Class GEM, Superb; with 2007 P.S.E. certificate graded Gem 100. Scott \$3. SMQ **Gem 100**; \$75. Estimate \$75 - 100
- 1541 ★★** 1926, 2¢ carmine lake, rotary, type I (634b), o.g., never hinged, incredibly intense color, an eye catching example of the carmine lake shade, Fine; with photocopy of 2003 P.S.E. certificate for block/4, from which this stamp was taken. Scott \$450. Estimate \$150 - 200
- 1542 ★★** 1928, 2¢ carmine, rotary, type II (634A), o.g., never hinged, particularly choice example of this tough type II stamp with fantastic deep rich color; a beautiful mint stamp, Very Fine; with 2005 P.S.E. certificate graded VF 80. Scott \$650. SMQ **VF 80**; \$650. Estimate \$500 - 750



1543



1544



1545



1546

- 1543 ★★** 1927, 4¢ yellow brown (636), o.g., never hinged, superior large margined example with tremendous deep rich color; a particularly choice example of this tough little stamp, Superb; with 2007 P.S.E. certificate graded SUP 98. Scott \$3. SMQ **SUP 98**; \$210. Estimate \$150 - 200
- 1544 ★★** 1928, 5¢ Hawaii (648), o.g., never hinged, magnificent top sheet margin single with incredibly large margins on all sides, scarce thus, as this issue tends to come with tight margins, particularly at the sides, Superb; with 2007 P.S.E. certificate graded SUP 98. Scott \$21. SMQ **SUP 98**; \$375. Estimate \$250 - 350
- 1545 ★★** 1929, 2¢ Edison, rotary coil (656), pair, o.g., never hinged, handsome example with rich color and beautiful centering, Extremely Fine to Superb; with 2009 P.S.E. certificate graded XF-SUP 95. Scott \$45. SMQ **XF-SUP 95**; \$160. Estimate \$100 - 150
- 1546 ★★** 1929, 6¢ Kans. (664), o.g., never hinged, tremendous example with lively color in Post Office fresh condition, Extremely Fine; with 2011 P.S.E. certificate. Scott \$50. Estimate \$100 - 150



1547



1548



1549



1550

- 1547 ★★** 1929, 9¢ Kans. (667), o.g., never hinged, outstanding large margined stamp with tantalizing color; an astounding showpiece for the collector building a top quality set one stamp at a time, Extremely Fine to Superb; with 2003 P.F.C. and 2006 P.S.E. certificate graded XF-SUP 95. Scott \$27. SMQ **XF-SUP 95**; \$200. Estimate \$150 - 200
- 1548 ★★** 1929, 10¢ Kans. (668), o.g., never hinged, desirable example of this stamp, with the most impressive large margins imaginable on this issue, Extremely Fine; with 1999 P.F. certificate. Scott \$45. Estimate \$100 - 150
- 1549 ★★** 1929, 6¢ Nebr. (675), o.g., never hinged, fabulous premium quality stamp; virtually perfectly centered with breathtaking color; a great stamp, Extremely Fine to Superb; with 2011 P.S.E. certificate. Scott \$70. Estimate \$150 - 200
- 1550 ★★** 1929, 7¢ Nebr. (676), o.g., never hinged, wonderfully fresh example with Jet-Black color; a pristine mint stamp, Extremely Fine to Superb; with 2011 P.S.E. certificate graded XF-SUP 95. Scott \$45. SMQ **XF-SUP 95**; \$325. Estimate \$250 - 350



1551 ★★ 1929, 8¢ Nebr. (677), o.g., never hinged, tremendous example with an incredible depth of color; perfectly centered amid large evenly balanced margins; a true World Class GEM of unparalleled quality, Superb; with 2011 P.S.E. certificate graded SUP 98 - this is 1 of only 8 examples to achieve this impressive grade, and is currently THE HIGHEST GRADED Scott #677, according to PSE's population report. Scott \$60. SMQ **SUP 98**; \$1,600.
Estimate \$1,000 - 1,500



1552 ★★ 1929, 10¢ Nebr. (679), o.g., never hinged, tremendous example of this tough stamp with evenly balanced margins and captivating rich color; a striking showpiece of unparalleled quality, Superb; with 1992 P.F.C. and 2007 P.S.E. certificate graded SUP 98, 1 of 15 examples attaining this impressive grade, with only 4 others currently grading higher. Scott \$180. SMQ **SUP 98**; \$1,050.
Estimate \$1,000 - 1,500



1553



1554



1556



1557

1553 ★★ 1931, 13¢ yellow green, rotary (694), o.g., never hinged, tremendous example of this tough rotary press printing, with large and balanced margins, with iridescent color; just a great stamp for the most quality conscious collector, Superb; with 2012 P.S.E. certificate graded SUP 98. Scott \$3. SMQ **SUP 98**; \$400.
Estimate \$300 - 400

1554 ★★ 1931, 50¢ lilac, rotary (701), o.g., never hinged, brilliant fresh example with outstanding centering, Extremely Fine to Superb; with 2007 P.S.E. certificate graded XF-SUP 95. Scott \$52. SMQ **XF-SUP 95**; \$185.
Estimate \$150 - 200

1555 ★★ 1931, 2¢ Red Cross (702), o.g., never hinged, striking World Class GEM that's beyond description; with huge margins and vivid colors; a Bo Derek "10" destined for the finest collection, Superb; with 2008 P.S.E. certificate graded Gem 100, this is 1 of 6 examples attaining this incredible grade, with only 2 others grading higher. Scott \$1. SMQ **Gem 100**; \$475.
Estimate \$400 - 600

1556 ★★/★ 1932, 2¢ Arbor Day (717), o.g., hinged or never hinged, perfect little GEM with incredibly rich color; among the finest obtainable examples of this tough little rotary press printing, Superb; with 2008 P.S.E. certificate graded SUP 98. Scott \$1. SMQ **SUP 98**; \$120.
Estimate \$100 - 150

- 1557 ★★ 1938, ½¢-50¢ Presidentials (803-831)**, o.g., never hinged, an incredibly beautiful set with each one being hand selected amongst many, a truly difficult set to assemble in such a balanced grade; each encapsulated with a P.S.E. graded XF-SUP 95. SMQ **XF-SUP 95**; \$681 (photo on web site). Estimate \$300 - 400



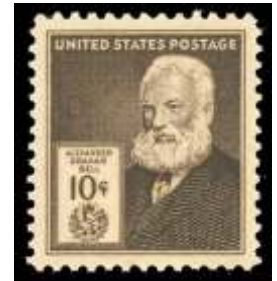
1558



Ex 1559



1560



1561

- 1558 ★★ 1951, \$1 Presidential, watermarked USIR (832b)**, o.g., never hinged, gorgeous large margins and deep rich colors; a pristine example of this tough stamp as fresh and choice on the back as it is on the front, Extremely Fine; with 1999 P.F. certificate. Scott \$200. Estimate \$200 - 300

- 1559 ★★ 1939, 1¢-10¢ Presidential coils complete (839-851)**, joint coil line pairs, o.g., never hinged, a complete set in unheard of quality, each pair trimmed to show portions of each adjoining stamp, 839 (95); 840 (85); 841 (95); 842 (95); 843 (95); 844 (90); 845 (95); 846 (90); **847 (98)**; 848 (95); 849 (98); 850 (90); 851 (90), select quality set, Very Fine to Extremely Fine; each with 2009 P.S.E. certificates graded VF-XF 85 to SUP 98. Scott \$2,030. Estimate \$1,000 - 1,500

- 1560 ★★ 1938, 10¢ Clemens (863)**, o.g., never hinged, a perfect little GEM with fabulous color; 1 of 19 examples at this perfect grade of "100" from PSE and is currently the highest graded example of this stamp, Superb; with 2008 P.S.E. certificate graded Gem 100. Scott \$2. SMQ **Gem 100**; \$165. Estimate \$100 - 150

- 1561 ★★ 1940, Famous Americans group (877/893)**, matchless GEM QUALITY selection of 7 different Famous Americans, each in the highly sought after grade of GEM-100; includes Scott #'s 877-878, 884, 887, 889-890, and 893, o.g., never hinged, this awesome group would be a great start to obtaining a complete run of these popular issues; a rare opportunity, Superb; each with 2006 P.S.E. certificate graded Gem 100. Scott \$14. SMQ **Gem 100**; \$1,140. Estimate \$600 - 800



- 1562 ○ 1942, 3¢ Win the War, purple color error (905b)**, "Los Angeles, Cal." precancel, impressive example of this scarce color variety in the eye catching purple shade; quite scarce as this is the only example to achieve the grade of 85 from PSE, with just 1 other example grading higher, according to PSE's population report, Very Fine to Extremely Fine; with 2008 P.S.E. certificate graded VF-XF 85. Scott \$500. Estimate \$400 - 600

- 1563 ★★ 1943-44, Overrun Countries complete (909-921)**, o.g., never hinged, complete set in the ultimate grade of GEM-100, except for #916 which is a 98, each of the thirteen stamps hand selected for perfection, with huge even margins, and dead-on centering. An amazing complete set offered as such, Superb; each encapsulated P.S.E. graded Gem 100, except #916 which is a 98. SMQ **Gem 100**; \$1,100 (photo on web site). Estimate \$500 - 750

End of Sale - Thank You