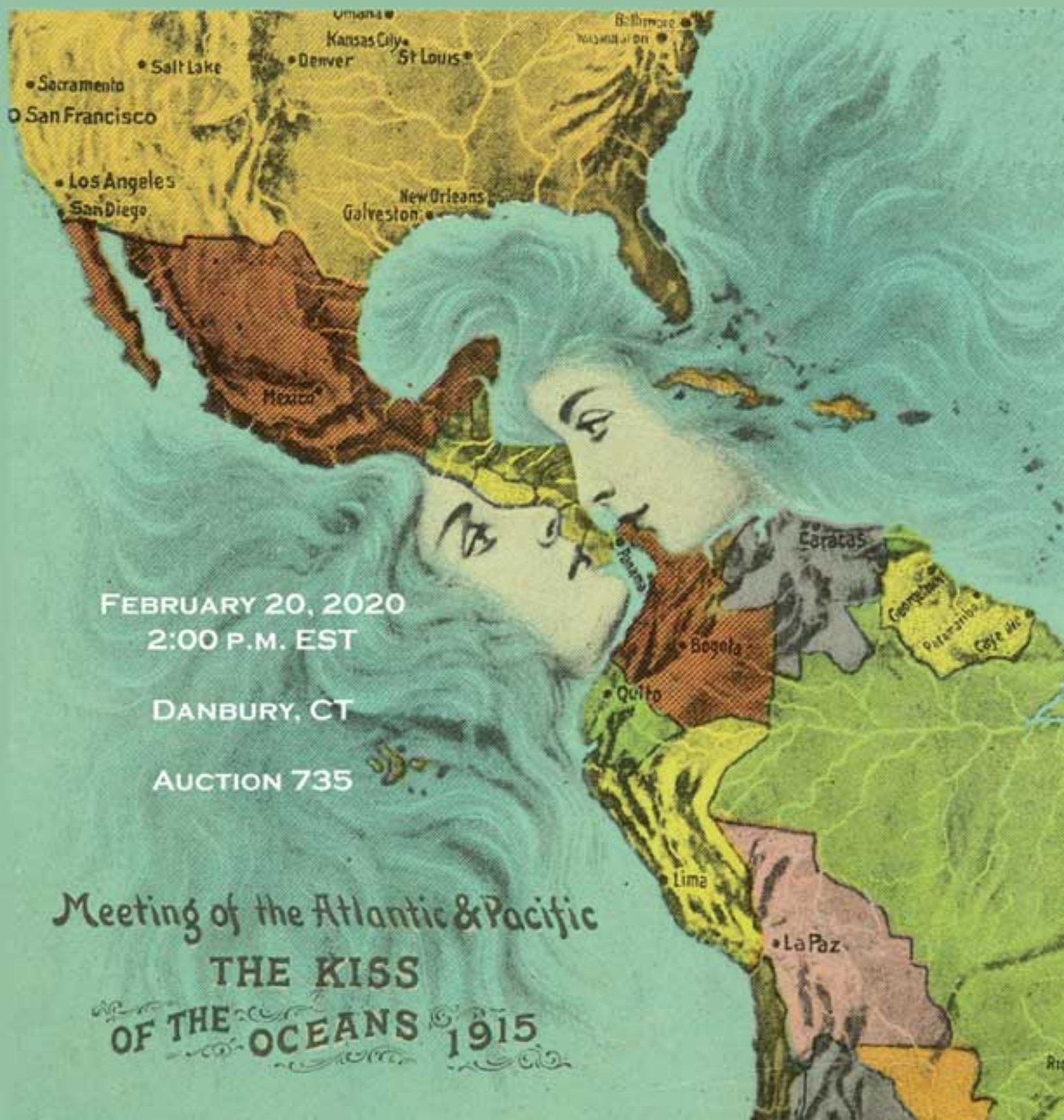


THE "CAMPBELL" COLLECTION OF U.S. POSSESSIONS FEATURING "CANAL ZONE"



FEBRUARY 20, 2020
2:00 P.M. EST

DANBURY, CT

AUCTION 735

Meeting of the Atlantic & Pacific
THE KISS
OF THE OCEANS 1915

INTRODUCTION

I first met Mr. Campbell at the Canal Zone Study Group meeting at Interphil '76 in Philadelphia. In the following years he was always friendly and helpful in helping with collecting. A font of information and experience, he's always willing to share, discuss and explore every facet of Canal Zone philately. An example of his generous nature (and his lovely wife Shea's) is that they have hosted the semi-monthly meetings of the Metro Chapter of the Canal Zone Study Group since we re-started it, under his guidance, in 2007. They always provided a wonderful and seasonally appropriate lunch for all who attend. Equally generous with his knowledge, George has written dozens of articles for the "Canal Zone Philatelist" and assisted by proof reading every issue. He has assisted in preparing almost every mail bid sale, and CZP index and held various executive positions in the national and regional group for years. George has been a friend, mentor, trading partner, supplier, customer and competitor at auction for many years, and made my philatelic world a better place for it.

I have had the extreme pleasure and privilege of preparing his collection for sale. Assembled over five decades with meticulous care and love, this amazing collection encompasses every area of the United States Possessions in astounding breadth and depth. The Canal Zone is noteworthy for the remarkable selection of true rarities included, the expansive Errors and Varieties and the mind boggling array of Postal History items of every type. Of particular merit is the overall condition of almost every item. Mr. Campbell was relentless in continual pursuit of upgrades for the great rarities as well as the seemingly mundane material.

The other Possessions areas, though not quite as extensive, display a remarkable degree of completeness, including many of the great rarities. Again, condition is a paramount concern to Mr. Campbell providing numerous items to satisfy the most discerning collector.

We have endeavored to intelligently present and meticulously describe each item, to maximize access to this marvelous collection and in certain cases maintain the continuity and integrity of various areas and groupings. We hope that you enjoy the catalogue as much as we enjoyed preparing it. And we most especially hope that you find many wonderful items to add to your collections.

Elliot W. Coleman for Daniel F. Kelleher Auctions, LLC



Gathering for dinner after a hard day of preparing the Canal Zone Study Group mail bid sale. From left to right: Dick Salz, Mike Demski, George Stilwell, Ginny Stilwell, Maggie Salz and George Campbell

Daniel F. Kelleher Auctions, LLC

Sale No. 735 - Public Auction Sale

To be held at our office:

22 Shelter Rock Lane, Unit 53, Danbury, Connecticut 06810

**THE "CAMPBELL" COLLECTION OF
U.S. POSSESSIONS
FEATURING "CANAL ZONE"**

Thursday, February 20, 2020 - 2:00 p.m.

TABLE OF CONTENTS: SALE 735

Canal Zone Stamps1201-1354	Guam1540-1550
Canal Zone Covers1355-1524	Hawaii1551-1578
Canal Zone Literature1525-1530	Philippines1579-1645
Panama1531-1532	Puerto Rico1646-1649
U.S. Offices in China1533-1535	Ryukyus1650-1655
Cuba1536	U.S. Possessions1656
Danish West Indies1537-1539		

**Viewing
Schedule**

February 3-14	Connecticut Office, By Appointment Only
February 17-19	Connecticut Office 9 AM - 6 PM
February 20	Connecticut Office for lots that have not sold.

kelleherauctions.com

Bidding also available on stampauctionnetwork.com



Mailing Address:
22 Shelter Rock Lane, Unit 53
Danbury, CT 06810
Phone 203-830-2500 Fax: 203-297-6059





1201



1202



1203



1204



1206



1205



1207



1208



1209



1210



1211



1212



Ex 1213



1214

CANAL ZONE STAMPS

- 1201 ★ **1904, 2c rose (1)**, slightly tropicalized o.g., large margins, bright color, attractive example, Very Fine; signed J.C. Perry, with 1984 P.F. certificate. Scott \$650. Estimate \$400 - 600
- 1202 ★ **1904, 2c rose, PANAMA overprint reading down (1)**, o.g., lightly hinged, bright color, exceptionally well centered for this stamp, Very Fine, *only 2600 issued (1274 with overprint reading down)*, accompanied by original auction card with "Genuine in all respects" signed J. T. DeVoss, stamp signed by J. C. Perry. Scott \$650. CZSG 1.B. Estimate \$400 - 600
- 1203 ★ **1904, 2c rose, "CANAL ZONE" inverted (1a)**, o.g., hinged, beautifully centered, scarce and desirable error, Very Fine to Extremely Fine, *only 100 issued*, Ex-Gibbs; signed H. F. Colman, with 1978 A.P.S. certificate. Scott \$1,000. Estimate \$750 - 1,000
- 1204 (★) **1904, 2c rose, "PANAMA" reading up on top 2c, down on other (1f)**, vertical pair, resulting from the 50-subject PANAMA overprints being applied to 100-subject sheets by the "work-and-turn" method, unused without gum, large balanced margins, intact perforations, certainly one of the finest pairs extant, Very Fine to Extremely Fine, *only 18 pairs recorded*, Ex-Gibbs; signed H. F. Colman. Scott \$2,100. Estimate \$1,500 - 2,000
- 1205 ★ **1904, 2c rose, "PANAMA" 15mm long (1 var.)**, position 10, corner margin single, slightly disturbed o.g., an excellent example of this variety, large margins and vibrant colors (certificate says slightly oxidized); small thin in right selvage, Very Fine, *only 260 issued (of which half have PANAMA reading up)*, Ex-Plass; signed H. F. Colman, with 2018 P.S.A.G. certificate. Scott \$700. CZSG 1.1a. Estimate \$500 - 750
- 1206 ★ **1904, 5c blue (2)**, o.g., hinged, bright colors, solid example, F.-V.F.; with photocopy of 1972 A.P.S. certificate for block from which this came. Scott \$300. Estimate \$200 - 300
- 1207 ★ **1904, 5c blue (2)**, slightly disturbed o.g., remarkably well centered, a choice example, Very Fine to Extremely Fine; with 1969 A.P.S. certificate. Scott \$300. Estimate \$200 - 300
- 1208 ▲ **1904, 5c blue, 10c yellow (2, 3)**, 5¢ Cristobal, July 3, 1904, 10¢ with partial Ancon, July 5, 1904 cancels, bright and attractive first issue provisionals on piece, both well centered and desirable examples, Very Fine; signed J.C. Perry (10c), both with 1970 A.P.S. certificates. Scott \$400. Estimate \$250 - 350
- 1209 ★a **1904, 5c blue, "CANAL ZONE" inverted (2a)**, block of 4 with part imprint at right, slightly tropicalized o.g., remarkably fresh and almost perfectly centered block of this scarce error, magnificent, Very Fine to Extremely Fine, *only 100 produced*, Ex-Helme. Scott \$3,100 as singles. Estimate \$2,000 - 3,000
- 1210 ★ **1904, 10c yellow (3)**, slightly tropicalized o.g., bright, large margins, excellent example, Very Fine to Extremely Fine; signed H.F. Colman, with 1982 A.P.S. certificate. Scott \$400. Estimate \$300 - 400
- 1211 ★ **1904, 10c yellow (3)**, fresh, lovely color, excellent example, Very Fine; with 1968 A.P.S. certificate. Scott \$400. Estimate \$250 - 350
- 1212 ★ **1904, 10c yellow, "CANAL ZONE" inverted (3a)**, o.g., hinged, deep rich color, attractive example of this sought after error, Very Fine, *only 200 produced*, Ex-Drucker; with 1975 A.P.S. certificate. Scott \$775. Estimate \$500 - 750
- 1213 ★ **1904, 1¢-10¢ overprinted U.S. complete and additional 2¢ scarlet (4-8 and 5a)**, o.g., lightly hinged, 10¢ never hinged, outstanding set, several values are particularly nice, included is scarce and undervalued 2¢ shade, Very Fine to Extremely Fine. Scott \$428. Estimate \$250 - 350
- 1214 ○ **1904, 1c green, double overprint (9d)**, purple "4" in bars from Doane cancel, very scarce and desirable major error, much better than usual centering for these; couple of slightly nibbed perfs, Very Fine, *only 20 examples recorded*; with 1971 A.P.S. certificate. Scott \$2,000. Estimate \$1,200 - 1,800



1215



1216



1217



1218



1219



1221



1220



1222



1223



1224



1225



1226

- 1215 ★ **1904, 2c rose, inverted overprint (10a)**, o.g., lightly hinged, bright and attractive example, scarce and desirable, Very Fine, *estimated 240 sold*. Scott \$225. Estimate \$150 - 200
- 1216 ★★ **1905, 2c rose, "PANAMA" inverted, bar at bottom (11b)**, o.g., never hinged, post office fresh, brilliant color, an amazing example, Very Fine to Extremely Fine, *only 200 issued*; with photocopy of 1993 P.S.E. certificate for block from which it came. Scott \$600 as hinged. Estimate \$500 - 750
- 1217 ★ **1904, 5c blue, "CANAL ZONE" double (12c)**, slightly tropicalized o.g., exceptionally well centered, an outstanding example of this scarce error, Extremely Fine, *only 300 produced, many used and destroyed*; signed Colman and Bartels, with 1978 A.P.S. certificate. Scott \$800. Estimate \$500 - 750
- 1218 ○ **1904, 5c blue, "PANAAM" at right (12 var.)**, light purple cancel, exceptionally well centered, unobtrusive cancel, very rare and sought after error, Very Fine to Extremely Fine, *comes from a few panes only, before it was discovered and corrected*. Scott \$850. CZSG 12.A.13. Estimate \$600 - 800
- 1219 ★a **1904, 10c yellow, "CANAL" in antique type, "ZONE" in antique type (13a, 13b)**, dark carmine overprint (7th printing), position 26//48, in block of 9, slightly tropicalized o.g., two very scarce varieties in one excellent block, an important position piece, fresh and, almost Very Fine, *#13a only 200 issued, #13b only 400 issued*, Ex-Gibbs. Scott \$474 as singles. Estimate \$350 - 500
- 1220 ★ **1904, 10c yellow, "PAMANA" reading down at right (13 var.)**, in pair with minor variety, orange red overprint (5th printing), positions 94 and 95 or 99 and 100, both stamps with PANAMA 1.5mm below bar, tropicalized o.g., large to huge margins, bold and bright, exceptional example of this very scarce error, Very Fine to Extremely Fine, *Canal Zone Stamps estimates that only 200 of this error were issued and only about 1400 of the minor variety*. Scott \$217+. CZSG 13.7, 13.15. Estimate \$150 - 200
- 1221 ★a **1904, 8c on 50c bister brown, "ZONE" in antique type (14a)**, carmine overprint (1SP), position 48, in a block of 4 with normal, tropicalized o.g., rare error in fresh and choice block, an important Canal Zone item, Very Fine, *Canal Zone Stamps estimates that only 25 examples were issued*; with 2011 P.S.A.G. certificate. Scott \$1,225. Estimate \$800 - 1,200
- 1222 ★ **1904, 8c on 50c bister brown, "CANAL ZONE" inverted (14b)**, slightly tropicalized o.g., scarce and desirable error, attractive example, Very Fine, *only two sheets issued*. Scott \$450. Estimate \$300 - 400
- 1223 ○ **1904, 8c on 50c bister brown, "PANAMA" in rose brown & "CANAL" in antique type (14d)**, position 26, CULEBRA double circle registry postmark, rare and undervalued used example of this very scarce error, well centered and quite attractive, Very Fine to Extremely Fine, *only about ten were issued*. Scott \$850. Estimate \$750 - 1,000
only 6000 stamps were overprinted with the rose brown shade, of these about ten sheets were from the fourth Canal Zone setting which contained only one position per sheet with the antique CANAL, thus only about ten examples were printed, of which more unused examples are known than used.
- 1224 ★ **1904, 8c on 50c bister brown, "PANAMA" in rose brown & "8 cts" double (14f)**, pair in block with pair of 14c, o.g., hinged, bottom pair lightly hinged, rare multiple of a very scarce error, fresh and attractive, F.-V.F., *only 30 of the double overprints were issued*; with 1969 A.P.S. certificate. Scott \$2,270 as singles. Estimate \$1,500 - 2,000
- 1225 ★ **1904, 8c on 50c bister brown (15)**, slightly tropicalized o.g., fresh and well centered, a choice example of this key value, missing from most Canal Zone collections, Extremely Fine, *only 5 sheets were issued*; signed H.F. Colman, with 2017 P.S.A.G. certificate and 2004 P.S.E. certificate graded XF 90. Scott \$2,000. Estimate \$1,800 - 2,500
- 1226 ★a **1905, 8c on 50c bister brown, "ZONE" in antique type (18a)**, position 48, in a block of 4 with normal, o.g., small hinge remnant at top, bottom two including **error never hinged**, very fresh and well centered example of this particularly difficult error, an impressive block, Very Fine to Extremely Fine, *only approximately 175 examples of this error were issued*. Scott \$335 as singles. Estimate \$200 - 300



1227



1229



1230



1231



1232



1234



1233



1235



1236



1237

- 1227 ★ 1906, 8¢ on 50c bister brown, “8 cts” omitted (20c)**, o.g., small hinge remnant, bright, fantastic centering for this scarce error, Very Fine to Extremely Fine, *only 50 issued*; with 1970 A.P.S. certificate. Scott \$800.
Estimate \$500 - 750
- 1228 ★ 1904-06, Third and Forth Series remainder (9-20)**, 139 stamps, in singles and blocks, comprising the remainder of the map issues, replete with varieties (minor and major) and with particular focus on various printings and overprints. Highlights include: #9a, 9b, 9 var (spaced A-L), 11 varieties, 12b in block, 12 varieties, 13a, 13b, 13var (spaced A-L) in block, 13var (PANAWA) in block, 14var (spaced A-L), 18-20, 19b in block, 20a, 20b, and others too numerous to name, tropicalized o.g. to never hinged, condition is far better than usually encountered in stamps from this issue, many particularly nice varieties and errors; few, if any, faults noted, generally F.-V.F. or better; with 1997 A.P.S. certificate for #12var (PAN MA) and 1997 P.F. certificate for #14c (photo on web site).
Estimate \$750 - 1,000
- 1229 ★★ 1907, 1c green & black, imperf between (22a)**, horizontal pair, o.g., never hinged, vibrant color, an exceptional example of this scarce pair, pristine, Extremely Fine, *only 50 pairs printed*. Scott \$1,100 as hinged.
Estimate \$750 - 1,000
- 1230 (★) 1907, 1c green & black, double overprint (22e)**, unused without gum, elusive double overprint; very light tropical stains at left, Very Fine appearance. Scott \$275.
Estimate \$150 - 200
- 1231 ★ 1907, 1c green & black, inverted center, overprint reading up (22g)**, sheet margin single, slightly tropicalized o.g., large balanced margins, particularly attractive example of this scarce and desirable invert, Very Fine to Extremely Fine, *22 unused and 13 used examples recorded*, Ex-Cunliffe. Scott \$3,500.
Estimate \$2,500 - 3,500
a single pane of this error was sold to the Panama Railroad company in 1909. All but 22 stamps were used before the error was discovered.
- 1232 ★ 1906, 2c red & black, imperf between (23a)**, horizontal pair, tropicalized o.g., very attractive example of this most elusive pair; small scrape at bottom of left stamp, Very Fine, *only 20 pairs produced*. Scott \$2,000.
Estimate \$1,000 - 1,500
- 1233 ★ 1906, 2c red & black, double overprint (23c)**, horizontal pair, slightly tropicalized o.g., bright and well centered; natural horizontal paper wrinkle across both, otherwise Very Fine to Extremely Fine, *one pane of 100 stamps received the double overprint*. Scott \$1,200.
Estimate \$600 - 800
- 1234 ▲ 1907, 2c carmine red & black, inverted center, overprint reading up (23g)**, tied by Cristobal, April 20, 1908, duplex with additional Colon, April 20, cancel, likely the finest existing example of this important Canal Zone Rarity, beautifully well centered and attractive; the literature states that all examples are “used and apparently defective” the only flaw on this superior example is the slightest of corner bends in the top right corner, otherwise flawless, Very Fine to Extremely Fine, *about a dozen used examples and one cover are known*, Ex-Jackson; signed “MNS” and “VM”, with 1952 P.F. certificate. Scott \$14,000.
Estimate \$10,000 - 15,000
This inverted center error apparently went unnoticed at the time of its issuance in early 1908, as all known examples are used. It was first reported in the Philatelic press in December of 1911. Accompanying the stamp is Mr. Campbell's summary of known examples and dates sold.
- 1235 ★ 1906, 5c ultramarine & black, double overprint (24c)**, 6.75mm hard paper, o.g., lightly hinged, fresh, deep color, huge margins, scarce error, Very Fine to Extremely Fine, *two pane of 100 were issued*. Scott \$500. CZSG 24.c.II.
Estimate \$350 - 500
- 1236 ★ 1906, 8c purple & black, imperf between and at left margin (25a)**, horizontal pair, slightly tropicalized o.g. hinged, scarce error pair, centered to top as usual, Fine, *only 34 pairs reportedly exist*; with 2000 P.F. certificate. Scott \$1,600.
Estimate \$1,000 - 1,500
- 1237 ★ 1906, 10c violet & black, imperforate at bottom (26 var.)**, horizontal pair with partial imprint, slightly tropicalized o.g., much better than most, crisp and bright, well centered, Very Fine to Extremely Fine, *one pane had the bottom row of perforations omitted, thus 20 examples exist*. CZSG 26.1.
Estimate \$350 - 500
- 1238 ★ 1906-07, 1c-10c overprinted Hamilton Bank Note remainder (21-26)**, over 50 stamps, in singles and blocks, including shades and varieties. Highlights include: complete set, #21 block, 22var “ANA/ZONE” in block, two 22var “CANAL/ONE” in blocks, 23var dark purple opt block, 23var overprint offset block, and many other blocks and shades, slightly tropicalized o.g. to never hinged, superior condition, difficult to duplicate range of shades and varieties, generally Very Fine or better. Scott \$650.
Estimate \$150 - 200



Ex 1239



1241



1244



1245



1246



1247



1242



1243



1248



1249

- 1239 ★★ **1909, 2c-10c overprinted complete (27-30)**, o.g., never hinged, an exceptional set, post office fresh, large margins and well centered, huge perfectly centered 5c, Very Fine to Extremely Fine, *a condition rarity!* . Scott \$130 as hinged. Estimate \$150 - 200



1240

- 1240 ○ **1909, 1c dark green & black, inverted center, overprint reading down (31a)**, partial Las Cascades duplex cancel, crisp and clean, left side perforations clipped beyond the edge of the stamp (as is typical of handmade booklets of the period, from which this might have come), completely sound and attractive, Fine and rare, *4 used examples known (one with severe defects)*, Ex-Plass, Drucker; with 2003 and 1967 P.F. certificates. Scott \$22,500. Estimate \$20,000 - 25,000

A Remarkable Canal Zone Rarity! According to Canal Zone Stamps, "George W. Wirth discovered the first copy of this error in 1932 [almost 20 years after it had been used]...The second copy [this stamp] turned up in the 1950's...It seems remarkable that the errors may have been used in making handmade booklets without the error being noticed; yet no one seems to have noticed the error either in booklets or in regular stamp stock, as it obviously was not saved at the time for collectors and there is no record of this error having been noticed and destroyed by C.Z. authorities."

- 1241 ★ **1909, 1c dark green & black (31c)**, booklet pane of 6, handmade, perforated margins, position H, tab at right (with partial guideline at bottom right), stitch binding, o.g., two with hinge remnants, others fresh never hinged, post office fresh and bright, horizontal panes are significantly scarcer than vertical (comprising only four out of fourteen positions), a marvelous pane, Very Fine to Extremely Fine. Scott \$500. Estimate \$350 - 500

- 1242 ★★ **1909, 1c dark green & black (31c)**, booklet pane of 6, handmade, perforated margins, vertical format, tab at bottom, stitched binding, o.g., never hinged, fresh and attractive, scarce pane, Fine. Scott \$500. Estimate \$350 - 500

- 1243 ★ **1909, 2c vermilion & black (32c)**, booklet pane of 6, handmade, perforated margins, position L, tab with "T" color registration marking at bottom, staple binding, tropicalized o.g., accompanied by original booklet covers (style B, salmon color), nice example of this scarce pane, F.-V.F. Scott \$800. Estimate \$500 - 750

- 1244 ★★ **1909, 5c deep blue & black, double overprint (33a)**, sheet margin single, o.g., never hinged, deep rich color, beautifully balanced large margins, a magnificent example, Very Fine to Extremely Fine, *only 200 issued*; with 1999 P.F. certificate. Scott \$375 as hinged. Estimate \$300 - 400

- 1245 ★ **1909, 5c deep blue & black, double overprint (33a)**, o.g., small hinge remnants, scarce and desirable error, typical Fine centering, *only 200 were issued*. Scott \$375. Estimate \$200 - 300

- 1246 ★ **1911, 10c on 13c gray, "10 cts" inverted (36a)**, pair, slightly tropicalized o.g., scarce error, attractive and desirable, Very Fine, *only 100 produced*, Ex-Schay. Scott \$650. Estimate \$400 - 600

- 1247 ★ **1911, 10c on 13c gray, "10 cts" omitted (36b)**, o.g., lightly hinged, crisp, almost perfectly centered, marvelous example of this scarce error, Extremely Fine. Scott \$300. Estimate \$200 - 300

- 1248 ★ **1913, 1c green & black (38b)**, booklet pane of 6, imperf margins, o.g., three lightly hinged, others never hinged, fresh and attractive example of this difficult pane, Very Fine. Scott \$575. Estimate \$350 - 500

- 1249 ★ **1913, 1c green & black (38c)**, booklet pane of 6, handmade, perforated margins, vertical orientation, tab at bottom, stitch binding, slightly tropicalized o.g., very scarce and desirable pane; some perforation separations, F.-V.F. Scott \$1,000. Estimate \$750 - 1,000



1251



1252



1253



1255



1257



1250



1254



1256



1258



1259



1260



1261



1262

- 1250 ★ 1912, 2c vermilion & black (39c)**, booklet pane of 6, imperf margins, very slightly tropicalized o.g., magnificent centering, an outstanding example of this elusive booklet, Very Fine to Extremely Fine. Scott \$550. Estimate \$400 - 600
- 1251 ★ 1912, 2c vermilion & black, overprint reading down (39d)**, o.g., lightly hinged, large balanced margins, clean and sharp, tremendous example of this appealing error, Extremely Fine. Scott \$200. Estimate \$150 - 200
- 1252 ★ 1912, 2c vermilion & black, inverted center, overprint reading down (39e)**, interestingly with inverted imprint as well, corner margin single, o.g., lightly hinged, An absolutely mind blowing example of this scarce and popular error, enormous perfectly balanced margins, vibrant color, outstanding in every respect, Extremely Fine to Superb, Ex-Conger; signed J. T. DeVoss in selvage. Scott \$600. Estimate \$750 - 1,000
- 1253 ★ 1912, 2c vermilion & black, inverted center, overprint reading down (39e var.)**, Broken "O" of "ZONE", slightly tropicalized o.g., exceptionally well centered, a marvelous example of this dual error/variety combination; small toned spot, otherwise Extremely Fine, *certainly very rare, possibly unique*. Scott \$600 for "normal" invert. Estimate \$600 - 800
- 1254 ★ 1912, 2c vermilion & black (39g)**, booklet pane of 6, handmade, perforated margins, 8.5mm spacing, early issue, position c, tab with "T" color registration marking at top, o.g., small hinge remnants, exceptionally well centered pane, excellent position piece, superior example of scarcer early printing, Very Fine to Extremely Fine. Scott \$900. CZSG 39g.A. Estimate \$750 - 1,000
- 1255 ★ 1915, 1c green & black (46)**, sheet margin single with color registration mark at right, slightly tropicalized o.g., enormous margins all around, an outstanding example, Extremely Fine to Superb. Scott \$175. CZSG 46.A. Estimate \$200 - 300
- 1256 ★★a 1915, 1c green & black (46)**, corner margin block of 4, o.g., never hinged, post office fresh, immaculate gum, outstanding centering, choice in every respect; top left stamp with trivial margin crease, Extremely Fine, Ex-Plas. Scott \$725 as hinged. CZSG 46.A. Estimate \$750 - 1,000
- 1257 ★ 1915, 1c light green & black, overprint reading down (46a)**, second printing, tropicalized o.g., large margins, well centered, scarce variety; one nibbed perforation at top, Very Fine to Extremely Fine, *only 200 issued*. Scott \$375. Estimate \$250 - 350
- 1258 ★ 1915, 1c light green & black, double overprint (46b)**, second printing, sheet margin single, tropicalized o.g., large margins, a particularly attractive example of this scarce error, Very Fine to Extremely Fine, *only 385 issued*. Scott \$225. Estimate \$200 - 300
- 1259 ★ 1915, 1c light green & black, double overprint (46b)**, second printing, a study of the four types of double overprints, left overprint high, right overprint high, overprint displaced vertically and overlapping overprints, a most impressive and difficult to replicate grouping, tropicalized o.g., carefully selected for the best of each type, including two exceptional examples, Very Fine for this. Scott \$900. Estimate \$750 - 1,000
- 1260 ★ 1915, 1c light green & black, double overprint, one split (46b var.)**, second printing, tropicalized o.g., exceptionally well centered, most interesting and unusual dual variety, Very Fine to Extremely Fine, *approximately 30 issued*. Scott \$225 for "normal" double. CZSG 46b.1. Estimate \$350 - 500
- 1261 ★ 1915, 1c light green & black, double overprint, one split (46b var.)**, second printing, slightly tropicalized o.g., bright and well centered, scarce dual overprint variety, Very Fine to Extremely Fine, *only 30 estimated to exist*, Ex-Gibbs, in whose sale it was incorrectly identified as a 46d, double overprint, one "ZONE/CANAL"; with 2015 P.F. certificate. Scott \$225 for "normal" double. CZSG 46b.1. Estimate \$350 - 500
- 1262 ★ 1915, 1c light green & black, double overprint, one reading "ZONE CANAL" (46d)**, second printing, tropicalized o.g., amazing and drastically undervalued dual error, sharp and attractive, Very Fine, *A Key Canal Zone Rarity, only 13 issued!*; with 2010 P.S.A.G. certificate. Scott \$2,000. Estimate \$2,000 - 2,500



1263



1265



1267



1269



1266



Ex 1268



1264



1270



1271



1274



Ex 1272



1273



1275



1276



1277

THE CAMPBELL COLLECTION: Canal Zone Stamps

- 1263 ★ 1915, 1c green & black (46 var.),** “E” of “ZONE” under “L” of “CANAL” position 8 or 18, 1st printing, slightly tropicalized o.g., nice example of this scarce variety, F.-V.F. Scott \$175 for normal. CZSG 46.A.2. Estimate \$250 - 350
- 1264 ★a 1920, 1c light green & black, overprint split vertically, shifted downward (46 var.),** second printing, block of 4 with sheet margin at right, tropicalized o.g., scarce variety from scarcer second printing, well centered multiple, Very Fine. Scott \$1,000 as normal singles. CZSG 46.B.3. Estimate \$800 - 1,200
- 1265 ★ 1920, 2c orange vermilion & black (47),** slightly tropicalized o.g., the key stamp in a Canal Zone collection, one of the finest we’ve seen, vibrant color, fantastic centering, an outstanding example, Extremely Fine and scarce. Scott \$2,750. Estimate \$2,000 - 2,500
- 1266 ★ 1915, 5c deep blue & black (48),** sheet margin single, slightly tropicalized o.g., never hinged, fresh and sharp, large margins, marvelous example, Very Fine to Extremely Fine. Scott \$425. Estimate \$350 - 500
- 1267 ★ 1915, 5c deep blue & black (48),** first printing, o.g., very lightly hinged, well centered and attractive example, Very Fine; with 1998 A.P.S. certificate. Scott \$425. CZSG 48.A. Estimate \$300 - 400
- 1268 ★★ 1918-20, 1c-5c complete, type IV overprints (52-54),** o.g., never hinged, 2¢ small hinge remnant, Choice, bright and attractive, a marvelous set; 5¢ hinged in selvage, stamp never hinged, Very Fine to Extremely Fine. Scott \$293 as hinged. Estimate \$200 - 300
- 1269 ★ 1918, 1c and 2c type IV overprint varieties (52a, 53a, 52b (2 pairs)),** includes 1c green & black and 2c vermilion & black, overprints reading down, 1c green & black two pairs from booklet pane, also included is booklet cover, front and back, type D (CZSG #52b.2) on light pink stock, tropicalized o.g., scarce and desirable varieties and additional bonuses, an excellent lot, Very Fine. Scott \$455. Estimate \$250 - 350
- 1270 ★ 1918, 1c green & black (52b),** booklet pane of 6, tropicalized o.g., very well centered pane, scarce and sought after item; slight tropical toning, Very Fine to Extremely Fine. Scott \$600. Estimate \$400 - 600
- 1271 ★ 1918, 2c vermilion & black (53c),** booklet pane of 6, tropicalized o.g., clean and vibrant, well centered for this scarce pane, Very Fine. Scott \$1,050. Estimate \$750 - 1,000
- 1272 ★ 1920-21, 1c-5c complete, type V overprints (55-57),** additional 1c green & black (#55, never hinged) and 2c vermilion & black (#56g) pair from booklet included, slightly tropicalized o.g., attractive set with extra bonuses, F.-V.F. Scott \$371. Estimate \$200 - 300
- 1273 ★★ 1921, 1c light green & black, inverted overprint reading down (55a),** o.g., never hinged, post office fresh and crisp, well centered, scarce error particularly this nice, Very Fine to Extremely Fine. Scott \$300 as hinged. Estimate \$200 - 300
- 1274 ★★ 1921, 1c light green & black (55e),** booklet pane of 6, o.g., never hinged, a truly exceptional example of this, the scarcest of the machine made panes, post office fresh, beautifully centered, fabulous pane, Extremely Fine. Scott \$2,250 as hinged. Estimate \$2,000 - 2,500
- 1275 ★ 1921, 1c light green & black, “CANAL” double (55f),** sheet margin at right with extra “ZONE”, in pair with normal, o.g., hinge remnants, incredibly well centered, crisp and bright, clearly one of the finest in existence of this great rarity, Extremely Fine to Superb, *only 10 issued*, Ex-Salz. Scott \$1,750. Estimate \$1,500 - 2,000
- 1276 ★★ 1920, 2c orange vermilion & black, double overprint (56a),** o.g., never hinged, vibrant color, large balanced margins, superior example of this scarce error, Very Fine to Extremely Fine, *one pane of 100 issued*. Scott \$500 as hinged. Estimate \$400 - 600
- 1277 ★ 1920, 2c orange vermilion & black, double overprint, one reading down (56b),** o.g., lightly hinged, better than usual centering, fresh, scarce error, Fine, *one pane of 100 issued*. Scott \$600. Estimate \$400 - 600



1278



1280



1281



1282



Ex 1283



1284



1286



1279



1285



1287



1289



1288



1290



1291



1292

THE CAMPBELL COLLECTION: Canal Zone Stamps

- 1278 ★ **1920, 2c orange vermilion & black, "ZONE" double (56f)**, sheet margin single with extra "CANAL" in margin, o.g., barest trace of hinge, fresh and lovely example of this scarce error, Very Fine, *only 30 issued*; with 2016 P.F. certificate. Scott \$900. Estimate \$750 - 1,000
- 1279 ★ **1920, 2c orange vermilion & black (56g)**, booklet pane of 6, slightly tropicalized o.g., particularly well centered, scarce pane; slight overall toning, minor wear on bottom corners, otherwise Very Fine to Extremely Fine. Scott \$900. Estimate \$600 - 800
- 1280 ★ **1920, 2c orange vermilion & black, "CANAL" double (56h)**, extra "ZONE" in selvage at right, in corner margin pair with normal, design number at top, o.g., hinged (some black paper adherence), very scarce error, eye catching pair, one of the better examples extant, F.-V.F., *only 20 examples issued*. Scott \$800. Estimate \$500 - 750
- 1281 ★ **1920, 50c orange & black (58)**, o.g., lightly hinged, slightly tropical gum, deep rich color, virtually perfectly centered, tremendous stamp, Extremely Fine. Scott \$250. Estimate \$200 - 300
- 1282 ★ **1920, 1b dark violet & black (59)**, tropicalized o.g., hinge remnant, beautiful color and contrast, large margins, choice example, Very Fine to Extremely Fine. Scott \$175. Estimate \$150 - 200
- 1283 ★ **1921, 1c-50c overprinted complete, 1924 1c -2c overprinted complete, two sets, one with Dropped "E" varieties (60-66, 68-69 (2 sets))**, o.g., lightly hinged or slightly tropicalized, 5c and 15c never hinged, outstanding sets, bright and sharp, marvelously well centered, Very Fine to Extremely Fine. Scott \$329. Estimate \$200 - 300
- 1284 ★ **1921, 1c green, "CANAL" double (60a)**, in horizontal pair with normal, slightly tropicalized o.g., huge margins, vibrant color, rare error, Very Fine to Extremely Fine, *only 10 issued*, Ex-Drucker. Scott \$1,900. Estimate \$1,500 - 2,000
- 1285 ★★ **1921, 1c green (60b)**, booklet pane of 6, o.g., never hinged, exceptionally fresh and well centered, an outstanding example of this quite elusive pane; couple of small gum skips and light gum bends, Extremely Fine. Scott \$900 as hinged. Estimate \$750 - 1,000
- 1286 ★ **1921, 2c carmine, inverted overprint, reading down (61a)**, slightly tropicalized o.g., bright, large margins all around, excellent example, Very Fine to Extremely Fine. Scott \$200. Estimate \$150 - 200
- 1287 ★ **1921, 2c carmine, double overprint (61b)**, in a strip of 3 with two normal, slightly tropicalized o.g., gum skip on error stamp, attractive example of this rare error, bright and well centered; few nibbed perforations, Very Fine, *only ten of this overlapping double overprint exist*. Scott \$900. Estimate \$750 - 1,000
- 1288 ★ **1921, 2c carmine, "CANAL" double (61d)**, in horizontal pair with normal, slightly tropicalized o.g., lightly hinged, large margins, deep color, outstanding example of this rare and desirable error, Very Fine to Extremely Fine, *only 10 examples of this error exist*, Ex-Drucker. Scott \$1,900. Estimate \$1,500 - 2,000
- 1289 ★★ **1921, 2c carmine (61f)**, booklet pane of 6, o.g., never hinged, an absolutely magnificent pane, post office fresh, brilliant color, remarkable overall centering for this very difficult item, very scarce and a condition rarity, Extremely Fine to Superb, Ex-Joyce. Scott \$2,000. Estimate \$2,000 - 3,000
- 1290 ★ **1921, 5c blue, 10c violet, overprints reading down (62a, 63a)**, slightly tropicalized o.g., fresh and handsome errors, F.-V.F. Scott \$150. Estimate \$100 - 150
- 1291 ★ **1924, 1c green (67)**, o.g., barest trace of hinge, very pretty stamp, bright and attractive, beautifully framed, Very Fine to Extremely Fine. Scott \$500. Estimate \$400 - 600
- 1292 ★★ **1924, 1c green, "ZONE CANAL" reading down (67a)**, o.g., never hinged, typical centering for these, bright and attractive, scarce double error, Fine, *only 80 examples issued*. Scott \$800 as hinged. Estimate \$500 - 750



1293



1297



1294



Ex 1295



Ex 1296



1298



1299



1300

- 1293 ★ 1924, 1c green, "ZONE CANAL" se-tenant with "ZONE" only, each reading down (67c),** corner margin pair, o.g., hinge remnant between stamps, clean and bright, both errors remarkably well centered, rare sought after dual error pair; left stamp with natural paper crease, Very Fine to Extremely Fine, Ex-Gibbs, Stillwell (with original 1973 receipt); with photocopy of 1969 A.P.S. certificate for block from which this came. Scott \$2,750. Estimate \$2,500 - 3,000

One pane received an inverted overprint, reading down, with the overprint shifted to the right thus causing two errors: "ZONE/CANAL" reading down (67a) on 90 stamps and "ZONE" only, reading down (67b) on the ten remaining stamps from the first column. This item is the bottom left corner margin pair, one of only ten such pairs possible.

- 1294 ★ 1924, 5c to 1b complete set, unissued (69 vars.),** type V overprint, several with dropped "E" variety, o.g., lightly hinged or small hinge remnant, among the finest sets available, fresh with awesome colors, exceptionally well centered particularly for these; 24¢ with tiny hinge thin, Very Fine to Extremely Fine. Scott \$2,450. CZSG 69.A-69.G. Estimate \$2,000 - 3,000

In late 1923, Panama advised the Canal Zone authorities of its intent to issue a new set of stamps featuring the Coat of Arms (Escudo) of the Republic. The Canal Zone placed an order for nine of these values (1 cent through 1 Balboa), overprinted "CANAL ZONE" which was received in early 1924 from the American Bank Note Company. Only the 1¢ and 2¢ denominations were ever issued by the Canal Zone. The need for the remaining denominations was obviated by the abrogation of the Taft Agreement. All of the unissued stamps were subsequently destroyed with the exception of 600 copies of each that were requested by Panama for transmittal to the U.P.U. A small number of these reached the public, although not through "normal" channels. They remain quite Scarce and sought after.

- 1295 ★ 1909-17, overprinted American Bank Note Company remainder lot (31//51),** thirty assorted stamps comprising: #31-35 complete set plus extras by printing, 36-37 plus variety, 38-41 plus extras by printing and variety, 42-45 plus 2c shade and 5c with 10mm spacing, 46b double overprint with minor defects and 49-51 complete, slightly tropicalized o.g. to never hinged, selected for freshness and outstanding appearance, difficult to duplicate group, Very Fine or better. Scott \$717+. Estimate \$350 - 500

- 1296 ★★ 1924-25, ½¢-\$1, complete, flat "A" (70-81),** including five additional printings with scarce 50¢ first printing, o.g., most never hinged, remainder lightly hinged or slightly tropicalized, amazing set, selected over 50 years for freshness and centering, close to ideal, Extremely Fine set. Scott \$620 without NH premiums. Estimate \$500 - 750

- 1297 ★ 1924, 1¢ deep green, flat "A", inverted overprint (71a),** o.g., hinged, excellent example of this elusive error, bright and sharp, better than most, solid F.-V.F., *only about 50 examples were found*; with photocopy of 1977 P.F. certificate for block from which it came. Scott \$500. Estimate \$400 - 600

- 1298 ★a 1924, 1¢ deep green, flat "A", "ZONE" inverted (71b),** position 30 LL, 1P, in block of 6, straight edge with guideline at right as always, slightly tropicalized o.g., bright and sharp, particularly well centered for this difficult error, Very Fine, *approximately 150-200 examples were saved by collectors.* Scott \$350. Estimate \$300 - 400

- 1299 ★ 1924, 1¢ deep green, flat "A", "CANAL" only and "ZONE/CANAL" overprint (71f),** in se-tenant pair, slightly tropicalized o.g., rare and desirable errors in an attractive combination pair, among the nicest of the still existing pairs, F.-V.F., *20 stamps were issued with the CANAL only error and 180 with the ZONE/CANAL overprint error.* Scott \$1,750. Estimate \$1,500 - 2,000

These errors were created when the overprint was shifted downward on a sheet of 400 so that the top horizontal row received only the CANAL and the remaining stamps the ZONE/CANAL error. Only the two upper panes were found, the bottom two were presumably destroyed by the B.E.P.

- 1300 ★ 1924, 1¢ deep green, flat "A", "ZONE CANAL" (71d),** o.g., lightly hinged, slightly tropicalized gum, attractive and nicely centered example of these scarce and sought after errors, Very Fine, *only 180 issued.* Scott \$400. Estimate \$350 - 500

This errors was created when the overprint was shifted downward on a sheet of 400 so that the top horizontal row received only the CANAL and the remaining stamps the ZONE/CANAL error. Only the two upper panes were found, the bottom two were presumably destroyed by the B.E.P.



Ex 1302



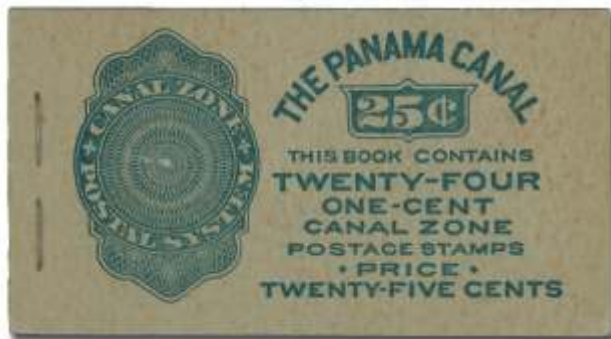
1303



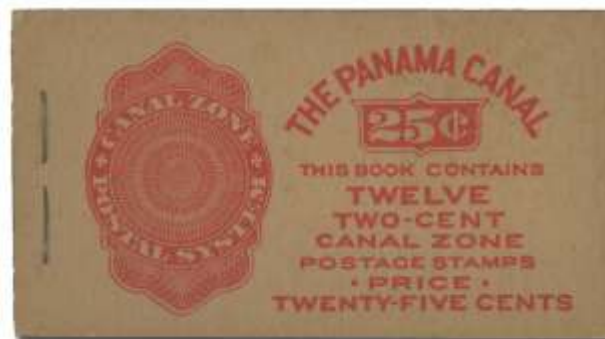
1304



1307



1301



1305



1306



1308



1309



1310



1311

- 1301 ★★ 1924, 1¢ deep green, flat “A” (71e)**, second printing, position H - guideline at right, complete unexploded booklet of four panes, o.g., never hinged, post office fresh, uncreased covers, immaculate panes, all remarkably well centered, choice in every respect, Extremely Fine to Superb. Scott \$320 as panes. Estimate \$300 - 400
- 1302 ★★ 1925-28, 2¢-\$1 definitives complete, sharp “A’s” (84-95)**, o.g., never hinged, exceptional set, every stamp is post office fresh, virtually perfectly centered with large margins, a total stunner, Extremely Fine to Superb. Scott \$879. Estimate \$750 - 1,000
- Perfect for the most demanding collector!*
- 1303 ★★ 1926, 2¢ carmine, sharp “A”, “CANAL” only (84a)**, sheet margin single, o.g., never hinged, outstanding example of this rare and desirable error, fresh and bright, clearly one of the best, Very Fine, *only 20 examples were issued*; with 2006 P.F. certificate for pair with 84b from which it came. Scott \$2,250. Estimate \$2,000 - 2,500
- 1304 ★ 1926, 2¢ carmine, sharp “A”, “ZONE CANAL” (84b)**, o.g., lightly hinged, fresh and well centered, an attractive example of this scarce error caused by a downward shift of the overprinting plate, Very Fine, *only 180 were issued*. Scott \$425. Estimate \$350 - 500
- 1305 ★ 1926, 2¢ carmine, sharp “A” (84d)**, position I - guideline at left, complete unexploded booklet of two panes, post office fresh, uncreased covers, well centered panes, choice, Very Fine. Scott \$350 as panes. Estimate \$300 - 400
- 1306 ★a 1925, 3¢ violet, sharp “A”, “ZONE ZONE” (85a)**, position 18 LR, in block of 6 with normal 85's, o.g., lightly hinged, scarce error in very attractive multiple, reasonably well centered as these are usually poorly centered; minor natural gum crease through error, still F.-V.F., *500 panes were printed, but the error was quickly discovered and 400 were removed and destroyed by authorities, of the remaining 100, it is estimated that about 90 still exist.*; with 2004 P.S.E. certificate. Scott \$550. Estimate \$400 - 600
- 1307 ★ 1925, 3¢ violet, sharp “A”, wrong font “CANAL” (85 var.)**, position 51 UL, o.g., lightly hinged, scarce and attractive, large to huge margins, Very Fine to Extremely Fine. Scott \$125. CZSG 85.1. Estimate \$150 - 200
- The wrong font is 9 point Century Expanded type instead of the normal 9 point Bodoni, and occurs on position 51 of all upper left panes from the May 19, 1925, shipment.*
- 1308 ★a 1926, 5¢ dark blue, sharp “A”, “ZONE ZONE” (86a)**, position 18 LR, in center of block of 9 normal, o.g., very lightly hinged with small hinge remnants reinforcing perforations, fresh and very well centered example of this rare error, wonderful block, Very Fine to Extremely Fine, *1250 errors were printed and officially destroyed by authorities, yet somehow about 15 examples have been recorded in philatelic hands.* Scott \$1,000. Estimate \$800 - 1,200
- 1309 ★ 1926, 5¢ dark blue, sharp “A”, “CANAL” inverted (86b)**, position 7 LR, second printing, in horizontal pair with normal, o.g., lightly hinged, very scarce error, incredible centering for this usually difficult item, deep rich color, absolutely one of the finest extant, Extremely Fine, *approximately 29 copies are recorded.* Scott \$950. Estimate \$800 - 1,200
- 1310 ★ 1926, 5¢ dark blue, sharp “A”, inverted overprint, split horizontally (86c)**, o.g., lightly hinged, scarce dual error, attractive example for these, Fine, *just 90 of the inverts were issued, an unknown number of those have the additional split overprint.* Scott \$500. CZSG 86c.1. Estimate \$400 - 600
- 1311 ★ 1926, 5¢ dark blue, sharp “A”, “ZONE CANAL” (86e)**, o.g., lightly hinged, well centered and appealing example of this scarce and interesting error, Very Fine to Extremely Fine, *90 examples of this error exist from the vertically shifted overprint sheet (this stamp included) and there are also an unknown (but relatively small) number that exist due to a diagonal shift of the overprint.* Scott \$350. Estimate \$300 - 400
- This error occurred when a sheet was misplaced in the press creating an upward shifted overprint causing 90 examples of the “ZONE/CANAL” error and ten of the “ZONE” only errors on the bottom row.*



1312



1313



1314



1318



1317



1316



1315



1319



1320



1323

THE CAMPBELL COLLECTION: Canal Zone Stamps

- 1312 ★** 1926, 5¢ dark blue, sharp “A”, “ZONE” only (86f), o.g., lightly hinged, rare and desirable error, missing from many of the finest Canal Zone collections, strong Fine for this, *only 10 examples reportedly exist*, Ex-Leeds; with 2012 A.P.S. certificate. Scott \$2,000. Estimate \$1,500 - 2,000
- 1313 ★★** 1926, 5¢ dark blue, sharp “A”, “CANAL” only (86h), o.g., never hinged, an important Canal Zone Rarity, off-center (as are most), fresh, deep rich color, V.G.-Fine, *only 8 examples reported, most with straight edges*; with 1998 A.P.S. certificate. Scott \$2,000. Estimate \$1,500 - 2,000
- 1314 ★★** 1926, 5¢ dark blue, sharp “A”, split overprint, part of ZONE at top and bottom (86 var.), o.g., never hinged, exceptionally well centered, post office fresh, an outstanding example of this almost ZONE/CANAL, Very Fine to Extremely Fine. CZSG 86.B.5a. Estimate \$100 - 150
- 1315 ★a** 1925, 10¢ orange, sharp “A”, “ZONE ZONE” (87a), position 18 LR, in top right block of 12, slightly tropicalized o.g., the finest of the five known examples, a major Canal Zone Rarity, Very Fine to Extremely Fine, *all but five were located and destroyed by authorities*, Ex-Plass; signed “sa” (Spencer Anderson), with 1967 P.F. certificate. Scott \$3,000. Estimate \$2,500 - 3,500
- 1316 ★** 1926, 17¢ black, sharp “A”, “ZONE” only and “ZONE/CANAL” overprint (91d), in vertical se-tenant pair, o.g., lightly hinged, bottom stamp never hinged, fresh and attractive pair, the bottom stamp is exceedingly rare this well centered and never hinged, among the finest example of this desirable error, Very Fine to Extremely Fine, *Only 40 of the ZONE only errors were produced and 450 of the ZONE/CANAL errors*. Scott \$1,400 as hinged. Estimate \$1,000 - 1,500
- 1317 ★★** 1926, 17¢ black, sharp “A”, “CANAL” only (91b), sheet margin at top, o.g., never hinged, slightly short gummed, rare and sought after error, this being one of the nicest extant, Fine, *about 15 examples were issued*, Ex-Laila; with 2003 P.F. certificate. Scott \$1,900. Estimate \$1,500 - 2,000
- 1318 ★** 1928, 50¢ lilac, sharp “A” (94), slightly tropicalized o.g., small hinge remnant, large margins, bright and attractive, Very Fine to Extremely Fine. Scott \$225. Estimate \$150 - 200
- 1319 ★** 1926, 2¢ carmine (97b), booklet pane of 6, o.g., lightly hinged, scarce pane, bright with vibrant color, reasonably well centered for this difficult item, F.-V.F.; with 2004 P.F. certificate. Scott \$500. Estimate \$350 - 500
- 1320 ★★** 1927, 2¢ carmine (101a), booklet pane of 6, o.g., never hinged, post office fresh and bright, F.-V.F. Scott \$200. Estimate \$150 - 200
- 1321 ★★** 1924-33, U.S. overprint booklet panes (71e//115c), booklet panes of 6, small group of five panes and an unexploded booklet including: #71e (position H), 73a, 84d (position J), 101a, 115c and 115c complete unexploded booklet, o.g., never hinged, 84d slightly tropicalized, superior group, particularly well centered for these usually difficult panes, Very Fine or better. Scott \$870 (photo on web site). Estimate \$500 - 750
- 1322 ★★** 1925-33, U.S. overprints remainder lot (87//116), group of selected stamps including: #87, 92 (2 different printings), 92 block of ten with varieties, 96 (2), 97-99, 98 (block) 100-104 (with extra 102 & 103 printings), 115-116 (plus 116 variety), o.g., most never hinged, excellent group, selected for condition, including some interesting varieties, Very Fine or better; with 1981 A.P.S. certificate for 116 split overprint variety (photo on web site). Estimate \$150 - 200
- 1323 ★★** 1934, 3¢ Goethals (117a, 117b), booklet panes of 6, handmade, perf'd margins and machine made, imperforate margins, small group including: #117b (single pane in unexploded booklet), 117b (pane with partial arrow at top), 117a (complete unexploded booklet), 117a (position J) and 117a (5 panes, position D, four different plate numbers), o.g., most never hinged, couple lightly hinged, difficult to duplicate accumulation, scarce numbers and positions, generally Very Fine. Scott \$480 ++. Estimate \$250 - 350
- 1324 ★/✉** 1939, 1¢-50¢ regulars and 5¢-\$1.00 airmails Canal Anniversary complete, single frame exhibit collection (120-135, C15-C20), 16 pages comprising triple combo first day cover (U.S., Canal Zone and Panama on one cover), mint sets of each, first day covers of each set, complete airmail set on one first day cover (registered special delivery to Germany), eleven commercial covers with various combinations of almost all of the different values, also included are 40 loose commercial covers with many different values, low values predominate but numerous higher values are noted including: 6¢, 7¢, 8¢, 11¢, 14¢, 15¢, 18¢ and 20¢ regulars and 25¢ and 30¢ airs, a wonderful exhibit, which won three awards in it's first showing at NOJEX, worthy of and including many covers for future expansion, excellent overall condition with many interesting covers, Very Fine to Extremely Fine (photo on web site). Estimate \$500 - 750



1326



Ex 1327



Ex 1328



Ex 1329



1330



1331



1332



1333

- 1325 ★★ 1962, 4¢ Thatcher Ferry Bridge, silver (bridge) omitted (157a)**, sheet margin single, o.g., never hinged, perfectly fresh, centered example of this scarce error, Extremely Fine to Superb. Scott \$8,000. Estimate \$6,000 - 8,000
- On Oct. 12, 1962, the Canal Zone issued a stamp commemorating the opening of the Thatcher Ferry bridge across the canal. During the preparation of first day covers a clerk noticed that a plate number block was missing the silver plate number and that the stamps were missing the silver bridge. The authorities made an immediate search and found the remaining 46 stamps from that pane and two additional panes with the error. Shortly thereafter, H. E. Harris & Co. discovered the upper right pane with the missing bridge error in its shipment of 5000 stamps from the Philatelic Agency. The Canal Zone authorities ordered 100,000 copies of the error be reprinted for sale at face value through the Philatelic Agency and began accepting orders. Harris filed suit for an injunction against the special printing. After a two and a half years legal battle he won the case and halted the reprinting. The two intact sheets were laminated and gifted to the Smithsonian and the Canal Zone Library museum, and the third was destroyed, leaving only Harris' sheet for philatelists. Accompanying this lot is an original envelope (dated Mar. 8, 1963) and a series of notices from the Canal Zone Government and the C.Z. Postal Service to Mr. Campbell regarding his order for copies of the promised reprints of the error and the delays resulting from the Harris lawsuit and finally the eventual return of his check on Mar. 13, 1964. Priceless ephemera for this most interesting error.*
- 1326 ★★ Airmail, 1951, 31¢ Globe & Wing, imperf vertically (C25a)**, horizontal pair, o.g., never hinged (natural gum wrinkles as usual), rare error, much better centered than most, a marvelous example, Very Fine, *only 98 pairs of this rare error are reported*; with 2008 A.P.S. certificate. Scott \$1,250. Estimate \$800 - 1,200
- 1327 ★/○ Airmail Officials, 1941-42, 5¢-\$1 type I, Officials 1¢-50¢ remainder lot (CO1-CO7, CO14, O1-O7, O9)**, group of 66 stamps including: #CO1-CO7 & CO14 and O1-O7 and O9 never hinged sets (O3 CTO), and numerous used stamps including postally used and CTO, many with sought after alignment varieties, excellent condition overall, many scarce and desirable, Very Fine lot. Estimate \$200 - 300
- 1328 ○ Airmail Officials, 1941, 5¢-40¢ complete, type II (CO8-CO12)**, cancelled to order as usual, excellent set, well centered, bright colors, scarce thus, Very Fine to Extremely Fine, *only 2000 of each (except 30¢) issued*. Scott \$800. Estimate \$500 - 750
- 1329 ○ Airmail Officials, 1941, 5¢-40¢ complete, type II (CO8-CO12)**, usual Balboa Heights wavy lined CTO, handsome set, well centered, vibrant colors, choice, Very Fine to Extremely Fine. Scott \$800. Estimate \$500 - 750
- 1330 ○ Airmail Official, 1941, 5¢ yellow green, type II (CO8)**, usual BALBOA HEIGHTS wavy lined cancel, solid example of this scarce stamp, F.-V.F. Scott \$150. Estimate \$100 - 150
- 1331 ○ Airmail Officials, 1941, 10¢ orange to 40¢ yellow, type II (CO9-CO12)**, including an extra 30¢, scarce postally used examples, appealing group; couple of minor creases, F.-V.F. Scott \$710. Estimate \$350 - 500
- 1332 ★ Airmail Official, 1941, 30¢ rose lake, type II (CO11)**, o.g., barest trace of hinge (appears never hinged with natural gum skip), exceptionally fresh and vibrant, very well centered, a condition rarity for this almost impossible unused stamp, Very Fine to Extremely Fine; with 2003 P.F. certificate. Scott \$900. Estimate \$750 - 1,000
- The type II overprints are **RARE** in unused condition as they had been sold out years before 1952, when the sale of unused officials was finally permitted. Unused copies were probably obtained by favor, or from a few miscellaneous examples in recalled stock.*
- 1333 ○ Airmail Official, 1947, 6¢ yellow brown, type I, inverted overprint (CO14a)**, BALBOA HEIGHTS roller cancel, very well centered, better than most, attractive, desirable and scarce error; small gum skip otherwise never hinged, Very Fine to Extremely Fine, *only one pane of 50 issued*, Ex-Drucker; with 1983 P.F. certificate. Scott \$2,000. Estimate \$1,500 - 2,000



Ex 1334



1339



1335



Ex 1336



1338



1340



1341



1342



1343



1344



Ex 1345

- 1334 ★ **Postage Dues, 1914, 1¢-10¢ complete (J1-J3)**, 1¢ o.g. never hinged, others tropicalized o.g., set selected for outstanding appeal, fresh and well centered, a Very Fine set. Scott \$1,235. Estimate \$750 - 1,000
- 1335 ★ **Postage Due, 1914, 1¢-2¢ rose carmine (J1-J2)**, disturbed o.g., exceptionally well centered, deep rich color, choice, Very Fine to Extremely Fine. Scott \$335. Estimate \$200 - 300
- 1336 ★ **Postage Dues, 1915, 1¢-10¢ complete (J4-J6)**, slightly tropicalized o.g., fresh and bright, mavelous set, Very Fine to Extremely Fine. Scott \$286. Estimate \$200 - 300
- 1337 ○a **Postage Due, 1922, 1¢ dark olive brown (J11C)**, two complete sheets of 100 and a block of four, one sheet split in half, with tropicalized original gum, and a couple of minor stains, the other with no gum and some reinforced perforation seperations, also with a couple of minor stains, cancelled by Balboa Heights, May 21, REC'D and June 30, REC'D, postmarks, no year dates, scarce large multiples, useful for study; includes copy of C.Z.S.G. article concerning these interesting stamps, generally Very Fine. Scott \$1,020 (photo on web site). Estimate \$150 - 200
- 1338 ★ **Postage Due, 1924-25, U.S. overprints (J12-J20)**, outstanding group of 14 stamps including: J12-J14 (J14 top plate number single), J15-J17 (extra mint and used J17's), J18-J20 (extra J18 and two extra J20, different printings), o.g., lightly hinged or most never hinged, incredible condition, fresh, virtually all beautifully centered, superior group, Very Fine to Extremely Fine. Scott \$1,139+. Estimate \$750 - 1,000
- 1339 ★ **Postage Due, 1925, 10¢ orange, "POSTAGE DUE" double (J17a)**, slightly tropicalized o.g., scarce error, much better then normal which often cut into design, Fine, *only 98 of this error issued*. Scott \$800. Estimate \$600 - 800
- 1340 ★ **Postage Due, 1925, 10¢ orange, missing "E" of "POSTAGE" (J17b)**, position 93, in horizontal pair with normal, slightly tropicalized o.g., scarce and desirable "POSTAG" error, attractive pair, Fine. Scott \$750. Estimate \$500 - 750
- 1341 ★a **Postage Due, 1925, 1¢ carmine rose, "ZONE ZONE" (J18a)**, position 18LR, in arrow block of 12, o.g., mostly lightly hinged with a few small hinge remnants reinforcing perforations, very scarce and desirable error, well centered example in attractive block, Very Fine, *officially 75 were issued, but only about 15 have been reported (all unused), the others were presumably used and destroyed*. Scott \$1,500. Estimate \$1,200 - 1,800
- 1342 ★a **Postage Due, 1925, 2¢ carmine rose, "ZONE ZONE" (J19a)**, position 18LR, in block of 9 with guideline at top, tropicalized o.g., attractive example in a nice block, very scarce error, Very Fine, Ex-Salz. Scott \$1,500. Estimate \$1,200 - 1,800
- There were 125 copies printed but the Canal Zone Postal Service officially located and destroyed 85 of these leaving 40 copies issued. Only about 15 have been reported (all unused), the others were presumably used and destroyed.*
- 1343 ★ **Postage Due, 1925, 10¢ rose red, double overprint (J20c)**, slightly tropicalized o.g., scarce and attractive error, better then usually found, Fine, *one pane of 100 was issued*. Scott \$450. Estimate \$350 - 500
- 1344 ★a **Postage Due, 1930, 1¢ on 5¢ blue, displaced overprint (J21 var)**, "POSTAGE DUE" at bottom, "1" split, and bars at top due to upward shifted surcharge, corner margin block of 4, straight edge and guideline at top and left, o.g., lightly hinged (natural gum skips), striking and very scarce variety, exceptional piece, Very Fine to Extremely Fine, *only 45 examples were issued*. CZSG J21.1. Estimate \$350 - 500
- 1345 ★ **Postage Due, 1915-19, overprinted Panama remainder lot (J4/J11C)**, small but interesting lot of 15 stamps as follows: #22 with Bliss Provisional "Postage Due" handstamp, type B (CZSG #22.PD-B), J4-J6 (plus extra J4), J7-J9 (including two wide and one narrow "10"), J8 split overprint (CZSG #J8.1 Ex-Gibbs), J10-J11, J11C (used) and J11Cd, o.g., hinged, few never hinged, excellent condition for these difficult dues, included are some scarce varieties, Very Fine or better. Estimate \$500 - 750



1346



1347



1348



1349

- 1346 ★ Official Perfins, 1912-31, accumulation**, 19 stamps in singles and pairs as follows (unused unless indicated): #37, 38(2), 39(2 plus pair), 40, 55 used, 60(pair), 60(2) used, 62(2) used, 71, 73, and C14 used, plus C9 "PSN" used, mixed o.g., no gum, or used, generally sharp and very attractive examples of these scarce provisional officials, mostly Very Fine.

Estimate \$150 - 200

- 1347 ○ Official, 1941, 50¢ rose lilac, type 1a (O8)**, Balboa Heights wavy line CTO, a first class example of this key Canal Zone stamp, Very Fine to Extremely Fine, *Only 1000 examples were ever issued*. Scott \$550. Estimate \$500 - 750

The 50¢ type 1A holds the distinction of being the rarest non-error stamp issued by the Canal Zone Postal Service since the abrogation of the taft agreement in 1924.

- 1348 (★) Post Office Seal, 1907-1974 remainder lot (OX1//OX7)**, group of 168 seals, singles, blocks, and sheets, comprising: OX1 (3 mint, 1 used), OX2, OX3 (4 singles, 2 pairs and a sheet of 25), OX4 (1 mint, 1 used), OX5, OX6 (1 mint, 1 used, 3 sheets of 32 (thin, medium and thick) and a block of 24), OX6a and OX7 (4) and a page of assorted Christmas seal in singles and blocks, without gum as issued, excellent collection of seals, difficult to assemble, generally Very Fine. Scott \$982+.

Estimate \$350 - 500

- 1349 ★★ Specimen Stamps, 1912-1922, small group (38S//J11CS)**, 23 stamps, singles and a block, with various type "SPECIMEN" overprints, from the American Bank Note Company sale, comprising: #38S(A), 38S(Ba), 38S(Bc), 40S(C) block, 49S-51S(Ba), two 49S(Bc, 1 faulty), 52S(Bb), 55S(Bb), 56S(Bb), two 58S-59S (Bd), J4S(A), J8S(Bb) and J11CS(Ba), o.g., never hinged, scarce and attractive group, developing demand makes these most desirable; 1 faulty stamp not counted, generally F.-V.F. or better, *from 100 to 500 of each printed, mostly 300*; signed "A.C." and position identified for each. Scott \$700.

Estimate \$350 - 500

- 1350 ★/○ Precancels, 1926, 17¢ black, sharp "A" to 1948 10¢ black (91//141)**, large group of over 170 assorted precancels, between 1 and 5 of each, only missing a few for completion of all known types, also included are two pairs of proofs of precancel type III (replacement plate and 2nd replacement plate) and as a bonus, four blocks of TB Christmas seals 1968 (20), 1969 (15), 1970 (16) and 1971 (16), an excellent group, exceptionally difficult to duplicate, generally F.-V.F. (photo on web site).

Estimate \$200 - 300

- 1351 ★ 1904-78, comprehensive collection of regulars, airs, dues and officials (4//O9)**, missing only a few major numbers, Mr. Campbell's secondary collection, again showcasing his quest for the highest possible quality, included are #4-8 (and 5a), 9-14, 16-20, 21-45, 46-47 used, 49-51, 53-57, 59 used, 60-165 complete, C1-C53 complete, CO1-CO7, CO14, J1-J25 complete (J15-J16 used), O1-O7 (O3 CTO) and O9, o.g., mostly lightly hinged with many never hinged, well above average for Canal Zone, includes many outstanding stamps, selected for freshness and overall appeal; few used stamps included, few stamps with minor faults including some of the higher values, mostly Very Fine or better. Scott \$7,283 (photo on web site).

Estimate \$2,500 - 3,500

- 1352 ★/○ 1904-78, select duplicates (2/165, C1/CO14, J1/J29, O1/O9)**, large stockbook with many hundreds of assorted stamps, blocks and booklets, unused highlights include: #2, 7, Map singles and blocks plus varieties (14 block, 12 PAMANA var with certificate, 18-20), 21-26, 71a(2), 73a, 81, 97-99(3), C2(3), C5a, C6-C14(4), J18-J20, J18 block, also small groups of Cuba, Philippines and Puerto Rico, o.g., hinged to o.g. never hinged and used, very nice selection, many useful items, highlights above are only the tip of the iceberg, thorough examination would be rewarded, much is Very Fine or better (photo on web site).

Estimate \$750 - 1,000

- 1353 ★★a 1925-78, plate blocks (70/165, C6/C53, J19/J29)**, plate blocks of 4 or 6, wonderful accumulation in large stock book comprising: #70, 85(2), 91, 98, 100, 96(3 including one block of 12), 105(5), 106(3), 107(3), 108(3), 109(2), 110(2), 111(3), 112(5), 113(3), 114(5), 117(4), 118(2), 119, 136(3), 137(3), 138(4), 139(2), 140(4), 141(2), 142(2), 143, 144, 146, 146(3), 147, 148, 149, 150(2), 152(2), 156, 157(4), 158(2), 159, 163(4), 164(3), 165(4), C6(2), C7(4), C8(3), C9(4), C10(3), C11(2), C12, C13, C14(2), C16, C21(4), C22(4), C23(5), C24, C25, C26, C27(6), C28(6), C29, C30(3), C31, C33, C34(4), C35, C36-C41, C42(2), C43(4), C44(3), C45(3), C46(7), C47(4), C48(3), C49(3), C50(2), C51(4), C52(5), C53(3), J18, J21-J24, J25(4), J26(2), J27 and J29, o.g., most never hinged, generally excellent condition, mostly different positions, numbers or printings, select group, Very Fine to Extremely Fine. Scott \$3,614 (photo on web site). Estimate \$750 - 1,000
- 1354 ★★ 1928-78, collection remainder (105//165, C1//C53, J21//J29)**, approximately 150 select stamps comprising #105-14, 120-35, 136-165, C1-C5, C5a, C6-C14, C15-C20, C21-C53, J21-J24, J25-J29 and additional line pairs and booklet panes, numerous shades and printings featured throughout the collection, o.g., never hinged, thorough and deep handling of the more recent Canal Zone issues, superior condition, would be incredibly difficult to replicate, Extremely Fine overall (no photo). Estimate \$350 - 500

CANAL ZONE COVERS



1356



1357



1358

- 1355 ☒ 1906-43, scarce towns and cancels, covers and cards**, accumulation of 40 items with scarce to rare postmarks including: Fort Grant (4), Fort Amador (2), Early Gamboa (Hs-7), Matachin (2), San Pablo (3), Miraflores (3+1 Registered), Monte Lirio (2), Porto Bello (Cristobal Sta. A - 3), Toro Point (Cristobal Sta. B - 2), Chagres (1), Tabernilla (12), Camp Chiva (2) and Rio Hato (3), very nice group of scarce to rare towns and markings, impossible to duplicate, generally quite attractive and desirable, Very Fine overall (photo on web site). Estimate \$750 - 1,000
- 1356 ☒ 1908, PORTO BELLO, on cover**, 2¢ vermillion & black (Scott #27), very fine, tied by "STATION "A" CRISTOBAL/NOV 15 P.M./CANAL ZONE." double circled duplex (Hs-4) on Isthmian Canal Commission cover to U.S., extremely scarce early type station A cover, much sought after marking on attractive cover; little bit dirty, still Very Fine. Estimate \$150 - 200
- 1357 ☒ 1908, PORTO BELLO RECEIVED, on picture postcard**, U.S. 1¢ blue green (Scott #300), fine, tied by partly indistinct, Nov. 3, 1908, machine cancel on picture postcard addressed to Porto Bello with "STATION "A" CRISTOBAL, C.Z./NOV 16 1908/RECEIVED." double circle postmark (Rc-7 with year date), rare special service marking from Station A, clear and complete strike, early use, station opened in September, a Very Fine cover. Estimate \$150 - 200
- 1358 ☒ 1910, PORTO BELLO, on cover**, 2¢ vermillion & black, type I (Scott #32), fine, tied by blue "STATION "A" CRISTOBAL,/MAY 16/12PM/1910/CANAL ZONE" duplex (Hs-5) on cover to U.S. with Rio, W. VA., May 26, receiver and forwarded to Botkins, Ohio, with May 28, REC'D, backstamp, very scarce Station A postmark, neat and handsome cover, Very Fine. Estimate \$150 - 200



1359



1360



1361



1362



1363



1364



1365



1366



1367



1368




1369



1370



1371

1359  **1912, TORO POINT, on legal size Isthmian Canal Commission, penalty cover**, cancelled by "**CRISTOBAL, C.Z./7 AM/12 FEB/STA. B/1912**" (Hs-11a) to Empire with straightline "District Physician" and "TORO POINT, C.Z." return address handstamps and Empire (Feb. 11?) REC'D backstamp (Rc-4), outstanding strike of rare Station B cancel on neat penalty cover, an Extremely Fine cover. Estimate \$100 - 150

- 1360 ☒ **1912, SAN PABLO REGISTERED, front and back of mailing tag, "SAN PABLO, C.Z./FEB 13 1912/REGISTERED."** double circle postmark (Rg-1) on cutout from official business penalty mailing tag, from the Postmistress to the Treasurer at Empire, used the day before the San Pablo office was closed presumably to send cash and/or valuables, a very rare registered San Pablo postmark, a fascinating piece of postal history, Very Fine. Estimate \$100 - 150
- 1361 ☒ **1912, PORTO BELLO, on picture postcard, 1¢ dark green & black, type I (Scott #31), fine, tied by "CRISTOBAL, C.Z./11:30 AM/FEB 14/STA. A/1912"** duplex (Hs-11a) on Trott picture postcard depicting, Taboquilla Island at Sunset, to U.S., scarce Station A cancel, nice use on postcard; stamp with minor perforation flaw, Very Fine. Estimate \$100 - 150
- 1362 ☒ **1912, PORTO BELLO REGISTERED, on cover, 2¢ vermilion & black, type I, and 10¢ on 13¢ gray (Scott #32, 36) cancelled by magenta segmented cork cancels on Isthmian Canal Commission, official business (crossed out and manuscript Cristobal Station "A" added) registered cover to U.S., backstamps include magenta "STATION "A" CRISTOBAL, C.Z./SEP 30 1912/REGISTERED."** (Rg-11a), Cristobal (Oct. 1), New York (Oct. 8) and Butler, Pa. (Oct. 9) registry marks, very rare special service device from one of the most difficult offices, nice use on an attractive registered cover, a Very Fine cover. Estimate \$150 - 200
- 1363 ☒ **1913, MONTE LIRIO, on cover, 2¢ vermilion & black, type II (Scott #39) tied by "MONTE LIRIO/JUL 29/8 AM/1913/CANAL ZONE"** duplex (Hs-7) on Panama Railroad Company cover to U.S., among the rarest of Canal Zone town cancels, very attractive usage; light file fold at left, still a Very Fine cover. Estimate \$150 - 200
- 1364 ☒ **1913, MIRAFLORES REGISTERED, backstamp on cover, 10¢ on 13¢ gray, 5¢ deep blue & black, type I (Scott #36, 33) with target cancels on registered cover to New York, backstamps include blue "MIRAFLORES, C.Z./AUG 11 1913/REGISTERED."** double circle (Rg-8), partial Cristobal (Aug. 11) and several New York (Aug. 19) registry backstamps, rare first Miraflores registry cancel, well traveled cover; back flap missing, somewhat soiled, a Fine cover. Estimate \$100 - 150
- 1365 ☒ **1914, GAMBOA, on local cover, 2¢ vermilion & black, type II (Scott #39), fine, tied by Gamboa, April 16, 1914, duplex (Hs-7) on cover to Cristobal, superb strike of rare early (office opened on Mar. 20, 1914) type cancel, lovely cover; bit roughly opened at top, Very Fine and attractive.** Estimate \$100 - 150
- 1366 ☒ **1914, BALBOA HEIGHTS, on Isthmian Canal Commission, penalty cover, cancelled by Balboa Heights, Sept. 1, 1914, duplex (Hs-8), to Corozal with Sept. 1, REC'D, backstamp, also with straightline "GOVERNOR'S OFFICE" handstamp, very scarce early type postmark, attractive official business envelope; slight soiling, still a Very Fine cover.** Estimate \$100 - 150
- 1367 ☒ **1914, BALBOA HEIGHTS, RECEIVED, backstamp on cover, 5¢ deep blue & black, type II (Scott #40), tied by Ancon, Oct. 13, 1914, duplex on local cover with "Balboa Heights, Canal Zone/OCT 13 1914/RECEIVED" backstamp (Rc-9), very scarce to rare early receiver, important item; stamp with insignificant perforation flaws, part of back flap missing, still a Very Fine cover.** Estimate \$100 - 150
- 1368 ☒ **1914, TORO POINT REGISTERED, on cover, 10¢ gray and 2¢ vermilion & black, type II (Scott #37, 39), tied by partly indistinct "CRISTOBAL STA. B CANAL ZONE/DEC 11 1914/REGISTERED."** postmark (Rg-13) with two excellent strikes on back, along with Cristobal (Dec. 11), New York (Dec. 20) and Detroit (Dec. 22 & 23) registry backstamps on registered cover, very rare special service device from very difficult Toro Point office, excellent registered usage; minor soiling, a Very Fine cover. Estimate \$150 - 200
- 1369 ☒ **1914, TORO POINT, on picture postcard, 1¢ green & black, type II (Scott #38), tied by "CRISTOBAL, C.Z./DEC 16/7 AM/STA. B"** duplex (Hs-11a) on clean and attractive Christmas picture postcard to U.S., excellent strike of rare Station B cancel, nice usage with 1¢ paying postcard rate to U.S., a Very Fine cover. Estimate \$100 - 150
- 1370 ☒ **1916, FORT GRANT, on cover to Michigan, 2¢ vermilion & black, type II (Scott #39g booklet single), very fine, tied by blue Fort Grant, July 4, 1916, postmark (Hs-9) with bold matching cancel adjoining on neat cover to U.S., very scarce first cancel from this short-lived (July 1, 1916 to Oct. 19, 1917) post office, an Extremely Fine cover. Estimate \$100 - 150**
- 1371 ☒ **1904, 2¢ rose and 5¢ blue (1, 2), fine to very fine, tied by CULEBRA, July 11, 1904, circular postmarks on small cover to Ancon with Panama and Ancon (July 11) backstamps, rare combination usage of 2¢ and 5¢ on one cover, scarcer post office cancel; gum stains from 5¢, slightly reduced at right, a Very Fine cover, only seven 2¢ and 5¢ combination cover are recorded in the Salz census and only 29 first issue covers of any kind from Culebra; signed J. C. Perry.** Estimate \$1,000 - 1,500

1c overpayment of six centavos local rate.



1372



1373



1374



1375



1376



1377



1378



1380



1381



1382



1383



1384

1372 ✉ **1904, 2c rose (1)**, very fine, tied by 7-bar CANAL ZONE cancel and BOHIO, June 30, 1904, circular date stamp on black and white Maduro picture postcard depicting, "Native washerwomen." to Colon with Cristobal (June 30) transit handstamp., scarce early usage of single on postcard, a well centered and attractive stamp, a Very Fine cover, *only 25 2¢ postcards are recorded in the updated Salz survey.*, Ex-Leeds; with 1985 P.F. certificate. Scott \$1,650.

Estimate \$1,000 - 1,500

1373 ✉ **1904, 5c blue, left "PANAMA" 2¼mm below bar on cover with normal (2 var, 2)**, variety is position 31 or 36, only 156 issued, fine, tied by CULEBRA, July 11, 1904, circular postmarks with matching 7-bar CANAL ZONE cancel on neat cover to Colon with Cristobal (July 12 on front) transit and Colon (July 13 duplex) backstamp, Culebra was one of the tougher small towns (a total of 29 first issue covers are known originating from there), the "normal" stamp has a slightly shifted PANAMA overprint exposing a portion of the PANAMA from the adjoining stamp which appears to have the colon between PANAMA and bar variety, a nice bonus; insignificant tropical toning, a Very Fine cover, *only 282 5¢ covers reported of which only 11 are from CULEBRA.* Scott \$725 cover plus variety. CZSG 2.1.

Estimate \$500 - 750

- 1374** ☒ **1904, 5c blue, 10c yellow (2, 3)**, very fine, tied by blue 7-bar CANAL ZONE cancel with matching ANCON, July 1, 1904, circular postmark on business reply envelope to Panama with July 1 backstamp, attractive stamps in combination usage possibly paying triple rate on rare commercial cover, a Very Fine cover, *There are only 29 5¢ and 10¢ combination covers recorded in the Salz census*; with 2004 P.S.E. certificate. Scott \$515 10c cover plus 5c used. Estimate \$400 - 600
- 1375** ☒ **1904, 5c blue (2)**, very fine, tied by 7-bar CANAL ZONE handstamp with matching **MATACHIN**, July 4, 1904, circular postmark on cover to Colon with Cristobal (July 4 on front) transit postmark, well centered stamp, very small town usage, a Very Fine cover, *only 282 5¢ covers are recorded, only 10 were from Matachin, and only 14 total first issue covers are known from there*. Scott \$225. Estimate \$350 - 500
- This is the Earliest known cover from the Matachin post office.*
- 1376** ☒ **1904, 5c blue (2)**, two, f-vf, tied by Culebra, July 11, 1904, circular postmarks, with matching 7-bar CANAL ZONE cancel on small cover to Panama with Cristobal (July 12) transit and Colon (July 13) duplex backstamp, very scarce cover with two 5¢, neat and desirable, a Very Fine cover, *only eleven 5¢ covers are recorded by Salz from Culebra and 282 #2 covers overall*; signed J.C. Perry and J.M. Bartels, with 2000 P.S.E. certificate. Scott \$415 as cover plus used single. Estimate \$300 - 400
- 1377** ☒ **1904, 5c blue (2)**, very fine, tied by **BOHIO**, July 11, 1904, circular postmark and matching 7-bar CANAL ZONE cancel on cover to Culebra with July 12 backstamp, attractive stamp on neat cover from one of the more elusive post offices; slightly reduced at left, a Very Fine cover, *282 covers are recorded with the 5¢ stamp, of these only ten are from Bohio*; signed J.C. Perry. Scott \$225. Estimate \$200 - 300
- 1378** ☒ **1904, 5c blue (2)**, fine, tied by purple 7-bar CANAL ZONE handstamp with matching **LA BOCA**, July 3, 1904, circular postmark on neat small cover to Cristobal (July 5 on front), attractive smaller town usage, a Very Fine cover, *282 5¢ covers recorded, 24 from La Boca*; signed Sloane and H.F. Colman. Scott \$225. Estimate \$150 - 200
- 1379** ☒ **1904, First Series postal history group (2, 3)**, generally f-vf or better, two 5c blue and seven 10c yellow, tied on seven covers and two fronts, four (two #2, one #3 and one #3 front) from Ancon, two #3 from Cristobal (one with defective stamp), two #3 from La Boca, one #3 front from Empire, large group of scarce first issue covers, all genuine and mostly quite attractive, most signed by either J.C. Perry or J.M. Bartels, generally F.-V.F. group of covers. Scott \$2,725. Estimate \$600 - 800
- 1380** ☒ **1904, 10c yellow (3)**, fine, tied by purple **GATUN**, July 11, 1904, circular postmark with matching 7-bar CANAL ZONE cancel on neat cover to Matachin with July 12, backstamp; slightly reduced at left, a Very Fine cover, *Salz's exhaustive census records only two 10c Gatun covers and only five total first issue covers from Gatun, Ex-Tows*; signed BDH (Harmers), with 1996 P.F. certificate. Scott \$325. Estimate \$500 - 750
- Gatun is the rarest post office for first issue covers, this being a wonderful example with a bold clear strike.*
- 1381** ☒ **1904, 10c yellow (3)**, very fine, tied by purple **GORGONA**, July 7, 1904, circular postmark with matching 7-bar CANAL ZONE cancel on cover **TO GERMANY**, Cristobal (July 7) transit on front and Colon (July 7), New York (July 20) and Hamburg (July 29) backstamps, very well centered and attractive stamp, scarce smaller post office, rare foreign usage, a choice showpiece; vertical file fold at left, a Very Fine cover, *Salz census records 293 10¢ covers but only 13 from Gorgona, and in total, there are only 34 foreign usages of first issue covers recorded, 20 to Germany*; with 1978 A.P.S. certificate. Scott \$325. Estimate \$500 - 750
- 1382** ☒ **1904, 10c yellow (3)**, extremely fine, tied by **EMPIRE**, July 7, 1904, postmark with matching 7-bar CANAL ZONE cancel on neat blue cover to Culebra (July 7 backstamp), large and balanced margins on bright and beautiful stamp, Empire is one of the smaller most elusive post offices, choice; slightly reduced at left, a Very Fine cover, *293 10¢ covers are recorded on the Salz census of which only 22 are from Empire*; with 1973 A.P.S. certificate. Scott \$325. Estimate \$250 - 350
- 1383** ☒ **1904, 10c yellow, "CANAL ZONE" inverted (3a)**, very fine, tied by 7-bar CANAL ZONE cancel with matching CRISTOBAL, July 10, 1904, circular postmark on neat cover to Ancon with July 10 backstamp, excellent example of this scarce error on a great cover, Very Fine to Extremely Fine, *only 200 of the error were produced, rarely encountered on cover*; with 2007 P.F. certificate. Scott \$800. Estimate \$500 - 750
- 1384** ☒ **1904, 1¢-10¢ overprinted U.S. complete (4-8)**, fine to very fine, tied by purple 7-bar CANAL ZONE cancels with matching ANCON, Dec. 10, 1904, circular postmark on neat cover to Panama with Dec. 12 backstamp, none of the usual straight edges, attractive late philatelic usage, a Very Fine cover. Scott \$273 as used singles. Estimate \$300 - 400



1385



1386



1387



1388



1389



1390



1391



1392



1393



1394





1395



1397



1398

- 1385**  **1904, 1¢-10¢ overprinted U.S. complete (4-8)**, fine, tied by purple CRISTOBAL, Dec. 8, 1904, circular postmark and matching 7-bar CANAL ZONE cancel on Isthmian Canal Commission, Official Business, cover to Panama, nice complete set on attractive official cover, only 1¢ has straight edge; couple of minor bends on stamps, a Very Fine cover. Scott \$272 used set. Estimate \$250 - 350
- 1386**  **1904, 1¢ to 5¢ values (4-6)**, also Panama 1903, 1c green, PANAMA reading down (Scott #71b), very fine, all tied by magenta 7-bar CANAL ZONE cancels with matching ANCON, July 21, 1904, circular postmark on picture postcard to GERMANY, markings includes Cristobal (July 21), New York (Aug. 3) and Doberan receiver, interesting and colorful mixed franking foreign usage, a lovely item; corner crease away from everything, Very Fine to Extremely Fine. Estimate \$200 - 300

- 1387 ☒ **1904, 1¢ blue green (4)**, two, fine, tied by EMPIRE, Aug. 4, 1904, postmarks on small cover to Panama with purple Ancon (Aug. 4) transit backstamp and Panama (Aug. 5) receiver, scarce and desirable commercial usage, excellent and unusual use of two 1¢ stamps to pay letter rate; slight gum stains around edges of stamps, a Very Fine cover. Scott \$98.
Estimate \$100 - 150
- 1388 ☒ **1904, 1¢ blue green, 2¢ carmine (4, 5)**, very fine, tied by 7-bar CANAL ZONE cancels and matching EMPIRE, Dec. 9, 1904, postmark, on black and white Maduro picture postcard depicting, two pictures of "Native Indians. Colon." to U.S., magenta Cristobal (Dec. 10) transit and Worcester, Mass, receiver, attractive use of two values on early card to U.S., elusive combination, a Very Fine cover. Scott \$100.
Estimate \$100 - 150
- 1389 ☒ **1904, 2¢ carmine (5)**, fine, tied by unusual purple straight line, "CANAL ZONE GOVERNMENT" [sic] handstamp (listed in Entwistle footnote), on cover to U.S. with manuscript "Via New Orleans" routing, backstamps include: Cristobal (Nov. 5, 1904), New York (Nov. 16) and Philadelphia (Nov. 17), very scarce and interesting Gover(n)ment handstamp; minor edge flaws and some soiling, a Fine cover. Scott \$75.
Estimate \$100 - 150
- 1390 ☒ **1904, 2¢ carmine (5)**, fine, tied by 7-bar CANAL ZONE cancel with matching **SAN PABLO**, Dec. 8, 1904, circular postmark on picture postcard depicting, "Native Soldiers in front of Quartel. Front Street. Colon." to Empire with Dec. 8, receiver, very scarce San Pablo cancel on fresh and attractive postcard, a Very Fine cover. Scott \$75. Estimate \$100 - 150
- 1391 ☒ **1904, 2¢ carmine (5)**, very fine, tied by purple 7-bar CANAL ZONE cancel with matching Ancon, July 19, 1904, postmark, **Earliest Reported Use** of this stamp, on neat small cover to Panama with July 19 backstamp, outstanding cover, choice stamp, important earliest use, an Extremely Fine cover. Scott \$75.
Estimate \$100 - 150
- 1392 ☒ **1904, 2¢ carmine (5)**, two, fine to very fine, tied by purple 7-bar CANAL ZONE cancel with matching **MATACHIN**, Oct. 18, 1904, postmark on cover to U.S. with red Cristobal (Oct. 18), New York (Oct. 26) and Andover, Mass. (Oct. 27), backstamps, nice, apparently double weight commercial usage, one of the toughest small post offices, a Very Fine cover. Scott \$100.
Estimate \$100 - 150
- 1393 ☒ **1904, 5¢ blue (6)**, very fine, tied by 7-bar CANAL ZONE cancel with matching EMPIRE, Dec. 7, 1904, circular postmark on neat cover to Gorgona with magenta Dec. 8, receiver on front, philatelically inspired but scarce on cover example; couple of slight edge flaws, a Very Fine cover, *only 16 5¢ covers so far recorded on Study Group census*. Scott \$275.
Estimate \$200 - 300
- 1394 ☒ **1904, 5¢ blue (6)**, very fine, tied by purple 7-bar CANAL ZONE cancel with matching **ANCON**, Nov. 24, 1904, circular postmark on cover to Jamaica, backstamps include: Cristobal (Nov. 24), Colon (Nov. 25), Kingston (Dec. 6) and Spanish Town (Dec. 6), excellent stamp on very scarce commercial cover, really nice usage; sealed tear at top of cover away from stamp and cancel, a Very Fine cover, *only 16 5¢ covers so far recorded on Study Group census*. Scott \$275.
Estimate \$200 - 300
- 1395 ☒ **1904, 8¢ violet black (7)**, two singles, fine, tied by 7-bar CANAL ZONE cancel with matching EMPIRE, Dec. 7, 1904, circular postmark on neat cover to Gorgona with red, Dec. 8, receiver on front, Very Rare though philatelically inspired on cover usage, fresh and attractive, a Very Fine cover, **only two 8¢ covers so far reported in Canal Zone Study Group census**. Scott \$585.
Estimate \$500 - 750
- 1396 ☒ **1904, 1¢ blue green, 2¢ carmine, eleven cards and covers (4, 5)**, scarce and attractive group including many commercial usages as follows: #4 picture postcard (Cristobal, Sept. 5), 4 picture postcard (Ancon, Oct. 4), 4 picture postcard (Ancon, Oct. 19), 5 cover to Panama (Ancon, July 19, **Earliest Reported Use**), 5 picture postcard (Empire, Dec. 9), 5 picture postcard (Ancon, July 20), 5 I.C.C., official business cover (Ancon, Sept. 26), 5 cover (New York, Nov. 16), 5 mourning cover (Ancon, Nov. 22), 5 picture postcard (Empire, Dec. 7) and 5 picture postcard (Bohio, Dec. 8), a remarkable group of these scarce second issue cards, years of accumulating in the making, impossible to duplicate, Very Fine lot. Scott \$825 ++ (photo on web site).
Estimate \$600 - 800
- 1397 ☒ **1904, 1c green, 2c rose pair, 1c on 20c violet, 2c on 1p lake pair (9, 10 pair, 16, 17 pair)**, very fine, tied by 7-bar CANAL ZONE cancels on registered cover with red "ANCON, CANAL ZONE/DEC 7 1906/REGISTERED." double-oval postmark and printed **Cristobal Registry Exchange Label (FX-CZ1)** to U.S., Cristobal (Dec. 7) Transit, New York (Dec. 18) and Montpelier (Dec. 19) receiver, lovely four-color franking on excellent registered cover with scarce exchange label, a Very Fine cover, *only 69 covers with Cristobal labels reported*. Scott \$400.
Estimate \$300 - 400
- 1398 ☒ **1904, 1c green, 2c rose, 5c blue, 10c yellow and 8c on 50c bister brown (9-10, 12-14)**, very fine, tied by magenta 7-bar CANAL ZONE cancels with matching **ANCON**, Mar. 10, 1905, circular postmark on return envelope to Burger & Co. (stamp dealer), New York with March 18 backstamp, fresh and choice, the entire set of then current Canal Zone stamps, lovely five-color franking, a Very Fine cover, Ex-Conger.
Estimate \$200 - 300



1399



1400



1401



1402



1403



1404



1405



1406



1408



1409



1411

- 1399 **1904, 5c blue variety, three 1c on 20c violet, 2c on 1p lake (12 var, 16a(3), 17),** fine to very fine, 5c variety, antique "L" of CANAL, position 42 (CZSG #12.Fa.3), tied by 7-bar CANAL ZONE cancels and double-circle, CRISTOBAL, July 6, 1906, REGISTERED, postmark on Maduro picture postcard depicting Panama flag, seal and stamps to England, includes Cristobal registry exchange label handstamp (RgXL-3), red "AR" in circle handstamp, double-oval New York (July 17) FOREIGN transit and exchange label (FX-NY1a), New Castle (July 26) and South Shields (July 28) REGISTERED receivers, amazing multicolored franking on registered postcard, for icing on the cake, eleven current Canal Zone stamps were added on top of the printed and embossed Panama stamps on the back, an Extremely Fine cover.

Estimate \$750 - 1,000

A magnificent item, incredibly rare registered, overseas, postcard usage. The correct rate, 2¢ UPU postcard + 8¢ registry fee + free return receipt. A remarkable card in every respect!

- 1400 **1904, 10c yellow (13),** very fine, tied by PEDRO MIGUEL, Sept. 28, 1906, duplexes with matching "PEDRO MIGUEL, C.Z./SEP 28 1906/REGISTERED." double oval postmark on Isthmian Canal Commission cover with printed **Cristobal Registry Exchange Label (FX-CZ1)** to U.S., backstamps include Cristobal (Sept. 28) and New York (Oct. 7) REC'D REG'Y handstamps, very scarce and attractive registered cover with printed label, a Very Fine cover, *Only 69 covers reported with this Exchange Label.* Scott \$400.

Estimate \$300 - 400

- 1401** ☒ **1904, 8¢ on 50c bister brown, 2c rose (14, 10)**, fine, minor edge flaws, tied by ANCON, Oct. 27, 1905, doane duplexes on registered cover to U.S. with additional double circled REGISTERED postmarks from Ancon and Cristobal and **Cristobal Registry Exchange Label (FX-CZ2)** tied by "CRISTOBAL P.O." handstamp, backstamps include New York (Nov. 5 and 6), very rare registry exchange label, type 2, tied on excellent commercial cover; minor stain on right edge, a Very Fine cover, *Only 12 examples of this exchange label reported on cover.* Scott \$500 ++. Estimate \$500 - 750
- 1402** ☒ **1904, 8¢ on 50c bister brown, 2c rose (14, 10)**, very fine, tied by ANCON, May 5, 1905, circular postmark on clean cover to U.S. with Cristobal (May 7), Seattle (May 20) and Fremont, Wash (May 21) receiver, stamp dealers Perry to Zug, marked "Important" and with 8¢ surcharge apparently paying registry fee though registry system not established in Zone until August, fresh and attractive cover, an interesting and unusual registry "forerunner", an Extremely Fine cover, Ex-Gibbs. Scott \$200. Estimate \$200 - 300
- 1403** ☒ **1905, 8¢ on 50c bister brown, block of four, top two "PANAMA" 15mm long variety (18, 18 var.)**, fine, tied by segmented cork cancel on registered cover with "STA. A, ANCON, C.Z./SEP 1 1906/REGISTERED." double-oval handstamp and **Cristobal registry exchange label (FX-CZ1)** to U.S. backstamps include Cristobal (Sept. 2), New York (Sept. 11) and Birmingham (Sept. 14), Excellent block on rare and attractive registered cover, a Very Fine cover, *only 69 examples of the printed registry labels have been reported*; with 1995 P.S.E. certificate. CZSG 18, 18.1b. Estimate \$600 - 800
- This is the lowest known number and the earliest known use of the printed Cristobal Registry Exchange Label. An important Showpiece!*
- 1404** ☒ **1905, 8¢ on 50c bister brown, 1c on 20c violet (18, 17a)**, fine, tied by target cancels with matching double circled GORGONA, July 28, 1906, REGISTERED, postmark on Isthmian Canal Commission cover with Cristobal Registry Exchange Label handstamp to U.S., includes Cristobal (July 28) and New York (Aug. 7) backstamps, scarce and attractive early registered cover from one of the better post offices, Very Fine. Scott \$225. Estimate \$150 - 200
- 1405** ☒ **1906, 8¢ on 50c bister brown (19, 16a pair)**, fine, tied by 7-bar CANAL ZONE cancel with matching PARAISO, July 27, 1906, REGISTERED, double circle postmark and Cristobal Registry Exchange Label handstamp on cover to U.S., with Cristobal (July 27), New York (Aug. 7) and Montpelier (Aug 8) backstamps, scarce early registered cover from Paraiso, nice franking on handsome piece, Very Fine. Scott \$275. Estimate \$200 - 300
- 1406** ☒ **1906, 8¢ on 50c bister brown, "PANAMA" reading down and up, in pair with normal (19d, 19)**, positions 1 and 2, fine, tied by "CRISTOBAL CANAL ZONE/ABR 24 1906/REGISTERED" double-circle postmark on Isthmian Canal Commission cover to Ancon with Station A (April 25) backstamp, clean and attractive, scarce error on cover, Very Fine to Extremely Fine, *only about 380 examples of error were issued, very scarce on cover.* Scott \$365. Estimate \$300 - 400
- 1407** ☒ **1904-15, Postal History accumulation, 1c green to 8c on 50c Map issues (9//20)**, over 150 cards and covers from a wide range of Post Offices, eleven Registered items, most appear to be to the U.S. or the Canal Zone, though a few are to Canada or overseas, an outstanding group accumulated over many years of searching, a thorough review well reveal many pleasant surprises, Very Fine overall (photo on web site). Estimate \$750 - 1,000
- 1408** ☒ **1906, 2c red & black, 8c purple & black (21, 25)**, fine to very fine, tied by PEDRO MIGUEL, Feb. 18, 1907, duplexes and Cristobal Registry Exchange Label handstamp on cover with double-oval "PEDRO MIGUEL, C.Z./FEB 18 1907/REGISTERED" postmark to U.S. with Cristobal (Feb. 18), New York (Feb. 28) and Montpelier (Mar. 2) backstamps, neat and desirable registered cover, Very Fine. Scott \$125. Estimate \$150 - 200
- 1409** ☒ **1906-07, 1c-10c overprinted complete (22-26)**, fine to very fine, cancelled by target cancels, later two tied by blue Cristobal Registry Exchange Label handstamp on cover with boxed "REGISTERED/MAR 7 1908/LAS CASCADES, C.Z." postmark to U.S. with blue Cristobal (Mar. 7) REG. DIV. REC'D backstamp and two different Philadelphia (Mar. 16) receivers, scarce and desirable complete set on registered cover, nice small post office cancel, Very Fine. Estimate \$200 - 300
- 1410** ☒ **1906-07, Postal History accumulation, 1c-10c Hamilton Bank Note issue (21//26)**, 57 covers and cards including 13 Registered, a wide array of Post Offices, usages and destinations, many scarce and attractive covers, calls for a thorough review, bound to turn up many pleasing surprises, excellent overall condition, remarkable variety, Very Fine overall (photo on web site). Estimate \$350 - 500
- 1411** ☒ **1909, 5c deep blue & black, pair, 2c vermilion & black (28 pair, 27)**, very fine, tied by "BALBOA, C.Z./DEC 20 1909/REGISTERED." double circle postmarks on registered cover with red Cristobal Registry Exchange Label handstamp to U.S. with Cristobal (Dec. 20), New York (Dec.28) and Newberry Station, Pa. (Dec. 29) backstamps, scarce 5¢ antique type cover, early Balboa registered; edge flaws at top, still a Very Fine cover. Scott \$225+. Estimate \$200 - 300



1412



Ex 1413



1414



1415



1416



1417



1418



1419



1420



1421



1422



1423



1424

1412 ✉ **1909, 5c deep blue & black, 10c purple & black (28, 30),** very fine, tied by PEDRO MIGUEL, Sept. 11, 1909, duplexes on cover with red Cristobal Registry Exchange Label handstamp to U.S. with Cristobal (Sept. 11) and Washington, D.C. (Sept. 21) backstamps, scarce 5c antique type cover, attractive combination franking, a Very Fine cover. Scott \$225+. Estimate \$150 - 200

1413 ✉ **1909-10, 1c-10c overprinted complete; 1911, 10c on 13c gray; 1912, 2c vermilion & black (31-36, 39),** fine to very fine, tied by multiple straight line, "Culebra, Canal Zone." handstamps on registered cover with Registry mark (RM-2) to U.S. backstamps include: Culebra (Jan. 22, 1913), Cristobal (Jan. 23), New Orleans (Jan. 28) and Washington, D.C. (Jan. 30), all REGISTERED double circles, **Earliest Known Use of 1912 2c (Scott #39)**, scarce and attractive type I complete set + registry stamp on cover, and a very unusual use of Culebra marking, an Extremely Fine cover. Estimate \$350 - 500

- 1414** ☒ **1915, 1c green & black, type III overprint (46)**, first printing, pair, fine to very fine, tied by Balboa Heights, Feb. 5, 1916, machine cancel on The Panama Canal, Official Business (crossed out) cover to U.S., scarce pair paying domestic rate to U.S., a Very Fine cover, *only 86 1¢ first printing total covers recorded in CZSG census*. Scott \$500. CZSG 46.A. Estimate \$350 - 500
- 1415** ☒ **1915, 1c green & black, type III overprint (46)**, first printing, pair, very fine, tied by Balboa Heights, Mar. 10, 1916, machine cancel on cover to U.S., scarce well centered pair paying domestic rate to U.S.; cover slightly reduced at right, with minor edge flaws and mild toning on reverse, a Fine cover, *only 86 1¢ first printing total covers recorded in CZSG census*. Scott \$500. CZSG 46.A. Estimate \$250 - 350
- 1416** ☒ **1915, 1c light green & black, type III overprint (46)**, second printing, fine, tied by Balboa, June, 24, 1921, duplex cancel, on Maduro picture postcard depicting, "ROYAL PALMS, ANCON, CANAL ZONE." to U.S., scarce second printing properly paying 1¢ domestic postcard rate; minor gum soakage around stamp, Very Fine, *only 28 1¢ second printing covers of which 14 are postcards recorded in CZSG census*. Scott \$175. CZSG 46.B. Estimate \$200 - 300
- 1417** ☒ **1915, 1c green & black, type III overprint (46)**, first printing, very fine, tied by Cristobal, Dec. 23, 1915, machine cancel, on Maduro picture postcard depicting, "Steam Hammer for driving Caisons, Cristobal Docks, Panama Canal." to U.S., handsome example of this scarce stamp properly paying 1¢ domestic postcard rate, Very Fine to Extremely Fine, *only 86 1¢ first printing covers of which 26 are postcards recorded in CZSG census*. Scott \$175. CZSG 46.A. Estimate \$150 - 200
- 1418** ☒ **1920, 2c orange vermilion & black, type III overprint (47)**, fine, tied by Cristobal, Oct. 13, 1920, machine cancel on Maduro picture postcard depicting, "GENERAL VIEW OF MIRAFLORES LOCKS, LOOKING NORTH, PANAMA CANAL." to ITALY with Bologna (Nov. 12) receiver, rare foreign UPU postcard rate paid by 2¢ type III; stamp with minor edge flaws, a Very Fine cover, *only 5 examples of 2¢ paying foreign postcards and only 58 total covers recorded in CZSG census*. Scott \$375. Estimate \$350 - 500
- 1419** ☒ **1920, 2c orange vermilion & black, type III overprint (47)**, very fine, tied by Cristobal, Nov. 10, 1920, machine cancel on cover to U.S., well centered stamp, scarce on cover usage, undervalued; minor gum stains around stamp, still a Very Fine cover, *only 58 2¢ total covers recorded in CZSG census*. Scott \$350. Estimate \$300 - 400
- 1420** ☒ **1915, 5c deep blue & black, type III overprint (48)**, second printing, very fine, tied by Ancon, Oct. 19, 1922, machine cancel on cover with illustrated Ford Motor Cars advertisement on reverse, to U.S., scarce and attractive usage of this stamp on a lovely cover; minor edge flaw from opening on reverse, a Very Fine cover, *only 13 covers of 5¢ second printing are recorded in the CZSG census*. Scott \$1,000. CZSG 48.B. Estimate \$800 - 1,200
- 1421** ☒ **1917, 24c yellow brown & black (51)**, Very Fine, tied by Ancon, Mar. 1, 1917, duplex on Panama Canal, Official Business (crossed out), cover to U.S., clean and neat solo usage on what is likely a philatelically inspired cover, still scarce and attractive; insignificant corner crease, a Very Fine cover. Scott \$325. Estimate \$250 - 350
- 1422** ☒ **1920, 5c deep blue & black (54)**, Fine, tied by Cristobal, July 18, 1921, duplex on neat cover to England, nice solo usage, handsome cover, Very Fine. Scott \$200. Estimate \$150 - 200
- 1423** ☒ **1921, 5c deep blue & black (57)**, Very Fine, tied by Cristobal, Dec. 8, 1923, machine cancel on cover to France, much sought after and difficult to find on cover, interesting destination; some minor tropical toning, an F.-V.F. cover. Scott \$225. Estimate \$150 - 200
- 1424** ☒ **1924, 1c green, type III overprint (67)**, very fine, tied by Ancon, June 28, 1924, machine cancel on Maduro picture postcard depicting, "LOOKING NORTH DOWN SIXTH STREET FROM CATHEDRAL PLAZA, PANAMA, REP. OF PANAMA." to U.S., scarce and attractive stamp paying domestic postcard rate; light stain and edge flaws on card, an F.-V.F. cover, *only 23 postcards of 29 reported covers in CZSG census*. Scott \$350. Estimate \$300 - 400
- 1425** ☒ **1909-24, Postal History accumulation, American Bank Note regular issues (27//69)**, approximately 250 cards and covers in 3 binders and loose pages, excellent variety of offices and cancels, wide range of usages and destinations, highlights way to numerous to mention, but here goes: 47 registered covers, illustrated advertising covers, World War I censored covers, dozens of foreign usages, Miraflores cover, Fort Grant cover, Cristobal Station B cover, #31-33 on postcard to Austria, #42-45 on one cover, #46 on postcard, #47 cover, #54 on postcard, and so much more, amazing group purchased over many years of searching, excellent condition, and incredible array of showpieces, Very Fine overall (photo on web site). Estimate \$1,500 - 2,000



1426



1427



1429



1430



1431



1435



1432



1436



1437

1426 ✉ **1924, 50c lilac, flat "A" (80)**, Very Fine, tied by Balboa Heights, July 15, 1926, machine cancel on registered cover to U.S. with boxed registry handstamp and backstamps including: blue Balboa Heights (July 15), red Cristobal (July 15), New York (July 22), Cleveland (July 23) and 2 different Columbus (July 23 and 24), all registered, rare and desirable 50c solo usage on a neat cover, a Very Fine cover. Scott \$500. Estimate \$400 - 600

1427 ✉ **1928, 50c lilac, sharp "A" (94)**, on 1929 2c red (Scott #UC2/UPSS #A5), entire, Extremely Fine, tied by Balboa Heights, April 17, 1929, machine cancel to U.S., rare use of 50c on cover, 52c correctly pays 1 ounce airmail rate to U.S. (25c per 1/2 ounce x 2 + 2c per ounce), a remarkable cover clean and lovely, Extremely Fine. Scott \$500. Estimate \$500 - 750

1428 ✉ **1924-33, U.S. Overprint Issues, covers (70//116)**, exceptional album containing about 118 cards and covers with U.S. overprints including 40 flat "A" to 30c with at least a dozen **registered**, 39 pointed "A" to 30c including at least 20 **registered**, also included are numerous flights, overseas usages, ships, postcards, combination uses, etc., huge variety of post offices, rates, usages, destinations, and every manor of postal history, particularly popular U.S. overprints, an amazing opportunity, overall Very Fine (photo on web site). Estimate \$750 - 1,000

1429 ✉ **1930, Graf Zeppelin Pan American Flight, Cristobal-Havana-Seville-Friedrichshafen**, targeted for Havana-Lakehurst-Friedrichshafen leg, cover missed connection at Cuba and was forwarded to Seville where it flew the last leg of Zeppelin from Seville to Friedrichshafen. Ten 25c on 2c carmine (Scott #C3), tied by Cristobal, May 15, 1930, duplex pay \$2.00 rate with Havana (May 16); Seville (June 4); and Friedrichshafen (June 6) backstamps, rare and attractive LZ-127 Zeppelin cover originating in the Canal Zone, a Very Fine cover, *A.A.M.C. catalogue states "at least three pieces known."* AAMC CZ57b. Estimate \$1,000 - 1,500

- 1430** ✉ **1930, Graf Zeppelin Pan American Flight, Cristobal-Miami-Friedrichshafen-Rio de Janeiro-Lakehurst**, ten #C3 tied by Cristobal, May 1, 1930, machine cancel on cover flown via FAM-5 to Miami, then by surface to Friedrichshafen then by Pan America Zeppelin flight via Brasil to Lakehurst with purple rectangular F.A.M. 5 cachet; magenta diamond shaped, "FIRST EUROPE PAN-AMERICA ROUND FLIGHT" cachet; and red circular Sudamerika Fahrt cachet. Green Lakehurst (May 31) backstamp. Rate should have been 20¢ Canal Zone + \$2.60 Zeppelin letter rate, but was overpaid by 20¢., scarce and lovely Canal Zone origin Zeppelin cover; mild corner creases, otherwise a Very Fine cover, *A.A.M.S. catalogue reports 15 covers and 3 cards were carried*, with 2002 Peter Rapp certificate. AAMC CZ55f; \$3,000. Sieger 64 II; €3,000 (\$3,520). Estimate \$2,000 - 3,000
- 1431** ✉ **1930 Graf Zeppelin Pan American flight, Cristobal-Havana-Seville-Friedrichshafen**, Scott CZ #C1, C3, C4, U.S. #C13, with Canal Zone stamps tied by Cristobal, May 15, 1930, machine cancel on card targeted for Havana-Lakehurst-Friedrichshafen leg but card missed connection at Cuba where it received Havana (May 16) backstamp and was forwarded to New York (May 27) tying 65¢ Zeppelin stamp; to Friedrichshafen (June 6) via Lakehurst. Card bears purple diamond, "FIRST EUROPE PAN-AMERICAN ROUND FLIGHT" and red German round, "SUDAMERIKA FAHRT 1930," flight cachets, rare and attractive LZ-127 Zeppelin card originating in the Canal Zone, Very Fine card, *A.A.M.C. catalogue states 25 cards and 20 covers carried*. AAMC CZ57 var; \$1,500. Estimate \$1,000 - 1,500
- 1432** ✉ **1930, Graf Zeppelin Pan American Flight, Cristobal-Lakehurst-Friedrichshafen**, Scott CZ #95, C1(2), C4(2), U.S. #C14, tied by Cristobal, May 22, 1930, machine cancel on cover flown via FAM-5 to Miami, then New York where \$1.30 Zeppelin stamp was tied by New York (May 29) duplex for the Lakehurst To Friedrichshafen leg with magenta diamond shaped, "FIRST EUROPE PAN-AMERICA ROUND FLIGHT" cachet was applied. Friedrichshafen (June 6) backstamp. Rate should have been 20¢ Canal Zone + \$1.30 U.S. Zeppelin rate, which was mistakenly paid twice with bot Canal Zone and U.S. postage., scarce and lovely Canal Zone origin Zeppelin cover; some cleanable soiling, a Very Fine cover, *A.A.M.S. catalogue reports 20 covers and 25 cards were carried*. Michel 68 Ga; €1,200 (\$1,410). AAMC CZ57; \$1,500. Sieger 64 III; €1,600 (\$1,880). Estimate \$1,200 - 1,800
- 1433** ✉ **1918-63, First Flight covers**, a large accumulation of over 100 pieces, includes a wide variety featuring A.A.M.S. #CZ 1 & 1a (1918 First Aero Mail Atlantic-Pacific), two 1919 First Submarine, four CZ 2, CZ 10a, CZ 29, CZ 51, two CZ 88a, two CZ 100 (Crash covers) and many others too numerous to mention including an assortment of legs and frankings, registered uses, etc., considerable duplication, generally attractive and in better than usual condition, Very Fine overall. AAMC CZ 1//CZ 134 (photo on web site). Estimate \$400 - 600
- 1434** ✉ **1929-31, SCADTA covers**, group of eleven mixed franking covers through the Canal Zone including two registered, one with Dropped "2" variety, several different SCADTA labels and markings and an assortment of routes and uses, very attractive and popular, worthy of further study and consideration, generally excellent condition, Very Fine lot (photo on web site). Estimate \$250 - 350
- 1435** ✉ **1929, SCADTA, 5¢ orange yellow to 15¢ carmine, "EU" overprints, on cover (CLEU50-52)**, used on First FAM Flight Miami (Feb. 4, 1929) to Cristobal (Feb. 7), Via Cartagena (Feb. 8), to Lima (Feb. 26), with FAM-5 flight cachet Miami to Canal Zone, and additional 3-line "Oficial/Correo Aereo/Cartagena." cachet, other franking includes U.S. 2¢-5¢ Aeronautics and 20¢ Air Post (649-650, C9), and Peru 50¢ Air Post and 2¢ Postal Tax stamps, also with attractive "VIA/AIR MAIL" and "BY AIRMAIL/IN/COLUMBIA" etiquettes, lovely and interesting multifranked airmail cover, scarce showpiece, a Very Fine cover. AAMC CZ 23d; \$200. Estimate \$150 - 200
- 1436** ✉ **Airmail Official, 1941, 5¢ yellow green, type II (CO8)**, pair, very fine, natural straight edge, tied by Balboa, Feb. 15, 1943, duplexes on small Official Business Penalty cover to Costa Rica with two different San Jose (Feb. 17) backstamps, very scarce, nice usage on neat small cover, a Very Fine cover. Scott \$650. Estimate \$500 - 750
- 1437** ✉ **Airmail Official, 1941, 10¢ orange, type II, 15c blue type I (CO9, CO3)**, very fine, 15c with straight edge, tied by Balboa Heights, Mar. 5, 1942, machine cancel and duplex on small Official Business, Penalty cover with 4-line in circle, "RELEASED BY/P.O. INSPECTOR/ENGAGED IN/CENSORSHIP" handstamp to Columbia with two different Bogota (Mar. 7) backstamps, scarce 10c type II cover in nice combination with 15c type I to a less common destination, a Very Fine cover. Scott \$400. Estimate \$350 - 500



1438



1441



1442



1443



1444



1445



1446



1447



1448

- 1438 ✉ **Airmail Official, 1941, 10¢ orange, type II, 5¢ blue official (CO9, O3)**, very fine, 5c with natural straight edge, tied by Balboa Heights, Mar. 8, 1942, machine cancel on Official Business, Penalty cover to U.S. with 4-line in circle, "RELEASED BY/P.O. INSPECTOR/ENGAGED IN/CENSORSHIP" handstamp, very scarce 10c type II in terrific combination with 5c official, underrated cover; missing back flap, otherwise a Very Fine cover. Scott \$425. Estimate \$350 - 500
- 1439 ✉ **Airmail Officials, 1941-42, 5¢/40¢, type I, 30¢, type II and 5¢ official, covers (CO1-CO6, CO11, O9)**, impressive collection of official mail covers, 29 total comprising: three 5¢, five 10¢ (including an "O" over "N"), thirteen 15¢ including one pair, 30¢ type I, 30¢ type II, 15¢ and 30¢ combo cover, 5¢ and 40¢ combo cover, two 6¢, plus two 5¢ official covers (one REGISTERED) and two bonus covers (an unfranked penalty cover and a #117 pair on a penalty cover), includes a wide array of post offices and markings, official mail and censor's markings and interesting usages, excellent group in outstanding condition, attractive and desirable, overall Very Fine (photo on web site). Estimate \$800 - 1,200

- 1440** ☒ **Special Delivery, 1925-73, collection of 17 covers**, including #73 and U.S. E12a, 1925, Balboa Heights to St. Paul; C5 and U.S. E15, 1930, first flight cover F8-25 Balboa Heights to St. Louis; C10 and U.S. E15a, 1942, Ancon to New York; 105 & 117 (5), 1942, **RIO HATO** (defaced Albrook Field duplex) to New York; C7 and U.S. E17, 1947, Albrook Field to Florida; 139 and U.S. E17, 1947, Margarita to Maryland; C10 and U.S. E15a, 1941, Ancon to Missouri with Crosby cachet; C10 and U.S. E15a, 1942, Ancon to Missouri with Crosby cachet; 105, 110 and U.S. E15a, 1942, Corozal to Virginia; C7, C9 and U.S. E15a, 1942, Ancon to Missouri with Crosby cachet; C22 and U.S. 810 & E16, 1952, Balboa A.M.F. to Miami; 138, C6 and U.S. 810, E16, 1953, Balboa A.M.F. to Miami; 112 and 147 pair, 1955, Balboa to New Jersey; C43a and U.S. E21, 1957, Cristobal to Minnesota; C49 and U.S. 1288, E22, 1971, Balboa to Philadelphia; 105, C48a and two U.S. E21, 1972, Howard Air Force Base to Puerto Rico; C49 and U.S. E23, 1973, Balboa to New York and 151, 163 and U.S. 1289, E23, 1976, Balboa on piece, an incredible group of these scarce covers, difficult to obtain and highly sought after this is a rare opportunity to acquire such a wonderful group, incredible condition throughout, Very Fine to Extremely Fine (photo on web site).
Estimate \$500 - 750

The Canal Zone did not have Special Delivery service of its' own. Persons desiring it could affix the appropriate postage, in U.S. or Canal Zone stamps, in addition to regular Canal Zone postage and mark such letters "Special Delivery" in order to obtain that service in the United States.

- 1441** ☒ **Postage Due, 1914, 1¢ rose carmine, three, and 2¢ carmine rose, two (J1 (3) and J2 (2))**, one of each tied by Cristobal, Nov. 9, 1914, REC'D postmark, others tied by similar, Dec. 18, postmarks, all on cover with Panama 1/2¢ orange (#195) tied by Panama, Nov. 8, 1914, machine cancel to Canal Zone with Cristobal and Ancon (Nov. 8) backstamps, interesting and unusual combination franking, quite an attractive cover; slight edge flaws, otherwise a Very Fine cover. Scott \$385 cover + singles.
Estimate \$200 - 300

- 1442** ☒ **Postage Due, 1914, 1¢ rose carmine (J1)**, pair, tied by purple double circle, Balboa Heights, Feb. 23, 1915, M.O.B., cancel on cover with U.S. 1¢ green (#424) tied by Detroit, Mich., Feb. 11, 1915, to Canal Zone with Balboa Heights (Feb. 21) backstamp, scarce first series postage dues on nice cover, handsome pair; some cover deterioration in bottom right corner away from everything, otherwise a Very Fine cover. Scott \$290.
Estimate \$200 - 300

- 1443** ☒ **Postage Due, 1914, 2¢ rose carmine (J2)**, tied by Balboa Heights, Mar. 22, 1915, REGISTERED, double circle postmark on cover from U.S. with 1c green (#424, defects) with straight line, "DUE (2) CENTS." handstamp to Canal Zone with Balboa Heights (Mar 21) backstamp, scarce 2¢ first issue postage due on neat cover; some edge flaws, still a Fine cover. Scott \$275.
Estimate \$150 - 200

- 1444** ☒ **Postage Due, 1914, 10¢ rose carmine (J3)**, tied by Cristobal, June 21, 1914, REC'D cancel on neat small unfranked cover from Saint George, Barbados with June 15, 1914, postmark and backstamp, also with "T" in circle handstamp and additional Cristobal backstamp, very scarce 10¢ first issue Postage Due cover, excellent stamp and proper usage paying double 5¢ U.P.U. rate, a Very Fine cover, Ex-Salz. Scott \$900.
Estimate \$750 - 1,000

The family's of laborers from impoverished countries often sent letters to them without postage as the workers were better able to afford the costs.

- 1445** ☒ **Postage Due, 1915, 1c olive brown (J4)**, pair, fine to very fine, tied by purple Balboa Heights, Oct. 7, 1915, M.O.B., postmark on cover with U.S. #424, tied by Detroit, Sept. 28, 1915 machine cancel to Canal Zone, nice usage on incoming letter; slight toning and minor edge flaws, a Fine cover. Scott \$150.
Estimate \$100 - 150

- 1446** ☒ **Postage Due, 1915, 2c olive brown, pair, 1c olive brown (J5 (2), J4 (6))**, two strips of three, very fine, tied by Culebra, Feb. 29, 1920, duplexes on unfranked cover from Chap(elton), Jamaica, Feb. 13, 1920, with "T" in circle Postage Due handstamp, to Canal Zone, scarce multiple uses on properly franked cover (double 5¢ U.P.U. rate), striking appearance; slightly reduced at right, a Very Fine cover. Scott \$475.
Estimate \$400 - 600

Laborers' families from impoverished countries often sent letters collect to the workers who could afford to pay for them.

- 1447** ☒ **Postage Due, 1915, 2c olive brown (J5)**, fine, tied by purple Balboa Heights, Mar. 31, 1915, M.O.B., postmark on cover with U.S. #424, tied by Michigan, Mar. 22, 1915 duplex cancel to Canal Zone with straight line "DUE(2)CENTS." handstamp and Balboa Heights (Mar. 31) backstamp, scarce and attractive proper use of 2¢ due on incoming letter; file fold and minor edge flaws, an F.-V.F. cover. Scott \$425.
Estimate \$300 - 400

- 1448** ☒ **Postage Due, 1915, 2c olive brown (J5)**, block of three, Very Fine, tied by Balboa Heights, May 18, 1915, M.O.B., postmark on cover with CZ #42, tied by Cristobal, May 18, 1915, duplex to Balboa Heights with May 18 REC'D backstamp, scarce 2¢ multiple on cover, properly used (short paid double rate cover 3¢ x 2=6¢) on cover handmade out of legal size penalty envelope; slight toning, an F.-V.F. cover. Scott \$460.
Estimate \$300 - 400



1449



1450



1451



1452



1453



1454



1455



1456



1457



1458



1459



1460

- 1449** ☒ **Postage Due, 1915, 10c olive brown (J6)**, fine to very fine, tied by Balboa, Mar. 23, 1916, REC'D, postmark on unfranked cover with "T" in circle handstamp from Jamaica with Hayes (Mar. 18), Kingston (Mar. 20), and Balboa (Mar 23) backstamps, Excellent usage on neat small cover, double 5¢ U.P.U. rate, a Very Fine cover. Scott \$175.

Estimate \$150 - 200

Laborers' families from impoverished countries often sent letters collect to the workers who could afford to pay for them.

- 1450** ☒ **Postage Due, 1915, 10c olive brown (J6)**, Very Fine, tied by fancy geometric cancel on back of cover from Jamaica with "T" in circle handstamp, Kingston, Nov. 13, 1915, and Ancon, Nov. 18, REC'D, backstamps, correct use, double 5¢ U.P.U. rate, on a scarce and attractive cover; slight edge flaws, still a Very Fine cover. Scott \$175.

Estimate \$150 - 200

- 1451** ☒ **Postage Due, 1915, 10c olive brown (J6)**, very fine, tied by Cristobal, June 24, 1915, machine cancel on unfranked cover with "T" in circle handstamp from Jamaica with Kingston (June 21) backstamp, remarkably fresh and clean cover, scarce usage (double 5¢ U.P.U. rate), gorgeous, an Extremely Fine cover, Ex-Salz. Scott \$175.

Estimate \$150 - 200

- 1452** ☒ **Postage Due, 1915, two 1c on 1c olive brown, 2c on 2c olive brown, 1919 2c on 2c to 4c on 4c olive brown complete (J7(2), J8, J10-J11),** Very Fine, tied by Cristobal, Mar. ? 1920, PAQUEBOT, postmarks on unfranked cover from Jamaica with Bowden, Mar. 9, 1920, postmark, "T" in circle postage due handstamp and Kingston (Mar. 10) backstamp to **FRIJOLE, C.Z.** very scarce Mount Hope due set complete with other values properly used to pay double 5¢ U.P.U. rate from Jamaica, quite astonishing combination franking; minor tropical toning, otherwise a Very Fine cover, Ex-Salz. Scott \$400 ++. Estimate \$500 - 750
- Laborers' families from impoverished countries often sent letters collect to the canal workers who could afford to pay for them.*
- 1453** ☒ **Postage Due, 1915, 1c on 1c olive brown, pair, 2c on 2c olive brown (J7(2), J8),** Fine to Very Fine, tied by mute circular cancels on U.S. 2¢ carmine (#U411) entire, cancelled by Balboa, Aug. 23, 1916, duplex to Cristobal with purple straight line, "POSTAGE DUE...(4)...CENTS." handstamp and Cristobal (Aug 23) REC'D backstamp, U.S. stationery item was not valid for postage, Due stamps pay correct double 2¢ rate, really interesting and unusual attempted use within the Zone, scarce combination Dues use; reduced at right, otherwise a Very Fine cover. Scott \$253. Estimate \$200 - 300
- 1454** ☒ **Postage Due, 1915, 1c on 1c olive brown (J7),** pair, Very Fine, tied by Balboa Heights, Mar. 16, 1916, M.O.B., postmark on cover from U.S. with 1¢ green (#424), tied by Detroit, Mar. 6, machine cancel to Canal Zone, marvelous pair pays double 1¢ deficiency on handsome cover; minor edge flaws and tear at left side beneath stamp, otherwise a Very Fine cover. Scott \$174. Estimate \$150 - 200
- 1455** ☒ **Postage Due, 1915, 2c on 2c olive brown (J8),** pair, Fine to Very Fine, tied by Balboa Heights, Jan. 5, 1917, M.O.B., postmarks on unfranked Masonic Lodge cover with Cristobal, Jan. 3, 1917, machine cancel, postage must have been inadvertently omitted, nice usage of scarce 2¢ pair to correctly pay double 2¢ rate; roughly opened and bit reduced at left, otherwise a Very Fine cover. Scott \$225. Estimate \$150 - 200
- 1456** ☒ **Postage Due, 1915, 10c on 10c olive brown, wide spacing between "1" and "0" of surcharge (J9 var.),** Very Fine, tied by Cristobal, Dec. 12, 1919, REC'D, postmark on unfranked cover from Jamaica with Port Maria, Dec. 3, 1919, postmark, "T" in circle Postage Due handstamp, and Kingston (Dec. 5) backstamp, Choice stamp on neat small cover, correct use of scarcer variety to pay double 5¢ U.P.U. rate, a Very Fine cover. Scott \$300 for normal. CZSG J9.B. Estimate \$250 - 350
- 1457** ☒ **Postage Due, 1915, 10c on 10c olive brown, wide spacing between "1" and "0" of surcharge (J9 var.),** Very Fine, tied by Cristobal, Mar. 8, 1917, duplex on unfranked handmade cover from Calcutta, East India with manuscript "T" postage due marking, "PASSED CENSOR/33/BOMBAY" double circle handstamp and censors tape on reverse to the Canal Zone, interesting and unusual cover from India, correct use of scarcer variety to pay double 5¢ U.P.U. rate; insignificant edge flaws, a Very Fine cover. Scott \$300 for normal. CZSG J9.B. Estimate \$250 - 350
- 1458** ☒ **Postage Dues, 1924, 1¢-10¢ complete, flat "A"s (J12-J14),** Very Fine, tied by Balboa Heights, Aug. 28, 1924, REC'D, postmarks on U.S. 2¢ carmine entire (#U429) cancelled by Delaware, Ohio, Aug. 14, 1924, machine cancel with Ohio Wesleyan University corner card to Canal Zone, **EARLIEST RECORDED USE** of this postage due set, scarce and attractive (though philatelically inspired) use of complete set on cover; vertical file fold, minor tropical toning, a Fine cover. Scott \$268. Estimate \$250 - 350
- 1459** ☒ **Postage Due, 1924, 10¢ deep claret (J14),** Fine, tied by 5-bar cancel on unfranked cover from Jamaica with Brown's Town, Dec. 18, 1924, postmark and "T" in circle handstamp to Cristobal, C.Z. with purple straightline "DEC 27 P.M" handstamp, scarce and correct use of this postage due stamp to pay double 5¢ U.P.U. rate; minor edge flaws, otherwise a Very Fine cover, Ex-Salz. Scott \$225. Estimate \$200 - 300
- 1460** ☒ **Postage Due, 1925, 1¢ deep green, pair, and 2¢ carmine, block of four (J15 pair, J16 block),** very fine, tied by Balboa Heights, Mar. 10, 1925, REC'D, postmark on reverse of U.S. 2¢ carmine entire (Scott #U429), cancelled by "HUD. TERM. STA. N.Y. 15/MAR 2/7:30 pm/1925" machine cancel (ironically with "REGISTER OR INSURE VALUABLE MAIL" slogan) and manuscript Registered Mail endorsement but no appropriate postage, a clerk must have noticed the endorsement and the cover was backstamped by New York (Varick Street Station), Mar. 3, REGISTERED, postmarks, a straightline "Found in ordinary mail" handstamp and a large "REGISTERED" handstamp, on arrival it received a red Balboa Heights, Mar. 10, REGISTERED, backstamp and then the dues to pay for the unpaid registry fee, also included are an article about this cover by Mr. Campbell that appeared in Linn's, and an article concerning, "Regulations for handling registered mail found in ordinary mail," by Tony Wawrukiewicz, also from Linn's, a remarkable postage due usage correctly paying an unpaid registry fee, an Extremely Fine cover. Scott \$155+. Estimate \$150 - 200



1462



1464



1467



1468



1469



1470



1471



1472



1473

- 1461** ☒ **Postage Dues, 1925, 1¢-10¢ complete, covers (J15-J17)**, group of six covers as follows: #J15 strip of three on legal sized cover with #71 from Cristobal, June 15, 1925; J15 on unfranked cover cancelled Cristobal, Mar. 23, no year date; J15 on unfranked cover from Cristobal, April 6, 1925; J16 on unfranked cover from Cristobal, Mar. 14, 1925; J16 on unfranked cover from Cristobal, Mar. 24, no year date; and J17 tied by Balboa Heights, Mar. 26, 1925, REC'D, postmark on unfranked cover., scarce and attractive group, sought after postage due covers; one J15 and one J16 cover with some tropical staining, otherwise Very Fine. Scott \$585 (photo on web site). Estimate \$300 - 400
- 1462** ☒ **Postage Dues, 1925, 1¢-10¢ complete, sharp "A"s (J18-J20)**, including two 2¢, Fine to Very Fine, tied by target cancels on Air Mail cover from U.S. with 5¢ beacon (#C11), tied by Los Angeles, April 10, 1930, machine cancel to Balboa Heights, Fresh and attractive, scarce complete set on cover, a Very Fine cover. Scott \$300+. Estimate \$200 - 300
- 1463** ☒ **Postage Due, 1925, 1¢ and 2¢ carmine rose, covers (J18, J19)**, group of 13 covers, six J18 covers (2 return postage circular rate, 1 strip of three for underpaid from Cristobal to Ancon, three fractional underpaid including one with plate single), seven J19 covers (three unpaid from Panama including J18 and J19 combo and two pairs, two underpaid flight cover from U.S., one underpaid first class from U.S. and 2 singles on underpaid from Great Britain), handsome group of ever popular postage due covers, some philatelically inspired but generally properly used paying legitimate rates, Very Fine overall. Scott \$688 (photo on web site). Estimate \$400 - 600
- 1464** ☒ **Postage Due, 1925, 10¢ carmine rose (J20)**, second printing, Very Fine, tied by double circle Cristobal, C.Z. cancel (Parcel Post type (PP-1) with most of Parcel Post removed) and purple straightline "OCT 23 1929" handstamp on cover from Jamaica with "T" in circle postage due handstamp and Kingston, Oct. 17, 1929, slogan cancel backstamp, correctly pays double 5¢ U.P.U. rate, scarce and desirable; vertical file fold, an F.-V.F. cover, Ex-Salz. Scott \$300. CZSG J20.B. Estimate \$250 - 350

- 1465** ☒ **Postage Dues, 1929-30, 1¢-10¢ surcharges, covers (J21//J24)**, group of nine items as follows: four 1¢ covers (three J21 with J18 and J19 on underpaid cover from U.S., one on underpaid cover from Balboa to Balboa Heights, two on underpaid stationery item from U.S., one plate single paying postage from Balboa Heights), three 2¢ covers (one paying postage with #105 on steamship cover, one paying return postage from Spain on printed matter, one paying postage from Balboa Heights) and two 10¢ covers (one (defective) with two 1¢ on underpaid airmail from Jamaica and pair on underpaid uprated airmail stationery envelope from U.S.), a really nice group of these very scarce and underrated dues (only current for about two years), includes a few excellent usages, Very Fine lot. Scott \$675 ++ (photo on web site). Estimate \$500 - 750
- 1466** ☒ **Postage Dues, 1932-64, 1¢-15¢ values, covers (J25//J29)**, group of 18 items including: 1¢ first day cover, 1¢ pair on reply envelope, two 1¢ and 2¢ singles on reply envelopes, 1¢, 2¢ and 5¢ on underpaid airmail from Canada, 2¢ on reply envelope, 2¢ pair on reply envelope, 2¢ on underpaid cover from Panama, 2¢ on underpaid letter from Pakistan, 5¢ on unfranked airmail cover from U.S., 1¢, 5¢ and 10¢ on underpaid airmail from Australia, pairs of 2¢ and 10¢ on underpaid airmail cover from U.S., 10¢ on unfranked cover from Barbados, 1¢ and 15¢ on underpaid airmail cover from France, 15¢ strip of 4 on postal receipt, nine 15¢, 1¢, 2¢ and 5¢ on postal receipt, 1¢ and 10¢ block of 4 on postage due card and a bonus unused postage due card, excellent comprehensive group of last due set, outstanding assortment of virtually all commercial usages, an impossible to duplicate collection, Very Fine or better (photo on web site). Estimate \$350 - 500
- 1467** ☒ **Official "P" perfins on 1912, 2c vermilion & black, pair, and 1918 1c green & black (39 var, 52 var)**, very fine, tied by blue Balboa Heights, Nov. 6, 1919, machine cancel on The Panama Canal, Official Business cover to **FRANCE** with Paris, Dec. 1, backstamp, incredibly rare and beautiful early example of official perf "P"s" on an amazing cover; bit roughly opened at bottom, inconsequential for this, an Extremely Fine cover, Ex-Salz. Estimate \$750 - 1,000
only 6 covers are recorded in CZSG census with "P" perfins on Panama overprinted stamps, this is the only recorded example of either of these stamps on cover!
- 1468** ☒ **Official "P" perfins on 1939, Airmail, 15¢ Canal Anniversary (C17 var)**, very fine, tied by Balboa Heights, Oct. 8, 1940, duplex on cover with The Panama Canal, Official Business, Executive Office, corner card to Washington, D.C., excellent example of this scarce and desirable provisional official stamp, a Very Fine cover, *Only 19 covers with this stamp are reported in the CZSG census.* Estimate \$200 - 300
- 1469** ☒ **Official, 1941, 10¢ orange and 5¢ yellow green airmail (O4, CO1)**, fine to very fine, 5¢ with natural straight edge, tied by Balboa Heights, Feb. 13, 1943, duplex cancels on legal size, Official Business, penalty cover with "OFFICIAL MAIL" endorsement by airmail to U.S., very scarce 10¢ official on cover, paired with 5¢ air official to pay airmail rate, attractive and much sought after usage; couple of light file folds clear of stamps, Very Fine and scarce. Scott \$200+. Estimate \$200 - 300
- 1470** ☒ **Post Office Seal, 1917, slate violet, three (OX3)**, on well traveled cover franked with U.S. 2¢ rose (Scott #499) tied by Philadelphia, Jan. 14, 1920, machine cancel to New York, with Hudson Term Sta, NY (Jan. 19) backstamp, two "Unclaimed/RETURNED TO SENDER" pointing hands, where it was apparently opened and resealed with 1917 U.S. Post Office Seal (Scott #OX18), then readdressed and forwarded to Cristobal, C.Z. with Jan. 28, receiver, additional straightline "JAN 29 1920" handstamps and eventually a Cristobal, Mar. 1, duplex, once more readdressed to Balboa Heights with Mar. 29, duplex backstamp; at some point, while in the Zone, it was reopened and resealed by a pair and single of the 1917 Canal Zone seal, a scarce and most interesting cover worthy of further study; numerous minor edge tears and soiling as you might expect from this voyager, still a Fine cover. Scott \$250. Estimate \$200 - 300
- 1471** ☒ **Post Office Seal, 1946, deep violet blue (OX4)**, unfranked Soldier's Letter with manuscript "FREE" endorsement and indistinct San Antonio, Texas, 1946, machine cancel on cover to Balboa with Nov. 10, 1946, duplex backstamp tying 1944 wildlife conservation stamp on back, manuscript, "OPENED BY MISTAKE" endorsement, resealed by 1946 Post Office Seal and forwarded to California, very scarce seal on cover, nice usage; cover flaws from opening and reopening, still a Fine cover. Scott \$300. Estimate \$250 - 350
- 1472** ☒ **Post Office Seal, 1961, black (OX6)**, on reverse of 8¢ emerald (Scott #U20/UPSS #79) entire, cancelled by Balboa, Dec. 15, 1971, duplex with red straightline "Received Unsealed at____" handstamp, seal with manuscript "W.M." endorsement, very scarce on cover, nice commercial usage, Very Fine to Extremely Fine. Scott \$175. Estimate \$150 - 200
- 1473** ☒ **Post Office Seal, 1961, black (OX6)**, tied by red, Balboa, Jan. 27, 1975, double circle cancels, with matching straightline "Received Unsealed at____" handstamp and manuscript "Pm" endorsements, on 2¢ on 11¢ entire (Scott #UC15/UPSS #A49) cancelled by Balboa, Jan. 27, 1975, machine cancel to U.S., very scarce on cover, particularly nice when well tied, marvelous commercial usage, an Extremely Fine cover. Scott \$175. Estimate \$150 - 200



1474



1475



1476



1477



1478



1479



1480



1481



1482



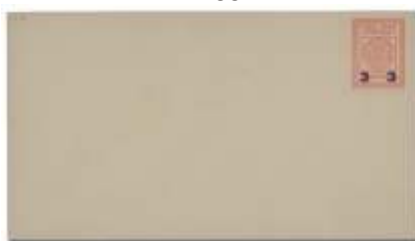
1483



1484



1485



1486



1487



1488



1489



1490



1491

- 1474 ☒ **Post Office Seal, 1974, black (OX7)**, strip of 3 with selvage at top, tied by red Balboa, July 15, 1976, double circle cancels and matching straightline "Received Unsealed at ____" handstamps on back of 13¢ purple (Scott #U22/UPSS #85) entire cancelled by Balboa (July 15) slogan cancel, local usage, very scarce well tied strip on cover, a choice usage, Extremely Fine. Scott \$150. Estimate \$150 - 200
- 1475 ★☒ **Envelope, 1916, 1c green & black, head and overprint only (U1a)**, rare and desirable error, a showpiece; light crease in back flap and at extreme left edge, still Very Fine, *only 5 unused examples recorded*, Ex-Helme. Scott \$1,750. UPSS 1a; \$2,000. Estimate \$1,500 - 2,000
- 1476 ★☒ **Envelope, 1916, 1c green & black, frame only (U1b)**, rare and fabulous error, a sought after and undervalued exhibit quality item, Very Fine, *only 3 unused and 1 used examples reported*, Ex-Plass. Scott \$1,500. UPSS 1b; \$2,000. Estimate \$1,500 - 2,000
- 1477 ★☒ **Envelope, 1916, 2c carmine & black, frame shifted (U2 var.)**, a striking variety, interesting and unusual, Very Fine; signed Gil Plass with note of explanation enclosed. UPSS 2j; \$400. Estimate \$350 - 500
- 1478 ★☒ **Envelope, 1916, 2c carmine & black, head and overprint only (U2b)**, very scarce error, bold and unusual, excellent example, drastically undervalued, Very Fine, *only 6 unused examples reported*. Scott \$750. UPSS 2c; \$1,500. Estimate \$1,000 - 1,500
- 1479 ★☒ **Envelope, 1916, 2c red & black, frame only (U2c)**, striking showpiece, very scarce and desirable error, Very Fine, *only 8 unused examples recorded*. Scott \$850. UPSS 2d; \$1,500. Estimate \$1,000 - 1,500
- 1480 ★☒ **Envelope, 1921, 1c green (U3)**, scarce and desirable envelope, quite difficult to obtain; slight tropical foxing at right edge, otherwise Very Fine; signed Sloane. Scott \$700. UPSS 3; \$1,000. Estimate \$600 - 800
- 1481 ☒ **Envelope, 1921, 1c green (U3)**, uprated with 1¢ green, type V (Scott #60), tied by Balboa, Nov. 16, 1922, duplexes to U.S., scarce entire, nicely uprated by matching stamp, excellent usage; light wrinkles, still Very Fine. Scott \$375. UPSS 3; \$500. Estimate \$300 - 400
- 1482 ★☒ **Envelope, 1921, 2c red (U4)**, clean and attractive example of this difficult envelope, choice, Very Fine to Extremely Fine. Scott \$325. UPSS 4; \$250. Estimate \$250 - 350
- 1483 ★☒ **Envelope, 1923, 2c carmine, embossed, type II, Falling Feather variety (U5 var.)**, scarce error, much sought after, Very Fine; signed Sloane. Scott \$200 for normal. UPSS 5a; \$650. Estimate \$400 - 600
- 1484 ★☒ **Envelope, 1923, 2c carmine, embossed, type I (U5)**, elusive and attractive entire; two tiny dings at bottom edge, Very Fine. Scott \$200. UPSS 5; \$450. Estimate \$200 - 300
- 1485 ★☒ **Envelope, 1932, 3¢ on 2¢ carmine (U12)**, knife P-6, fresh and choice example of this elusive envelope, Very Fine to Extremely Fine. Scott \$225. UPSS 31; \$250. Estimate \$150 - 200
- 1486 ★☒ **Envelope, 1934, 3¢ on 2¢ carmine, type 3 surcharge (U14)**, scarce entire, bright and clean; hinge remnants on back, Very Fine to Extremely Fine. Scott \$425. UPSS 36; \$350. Estimate \$300 - 400
- 1487 ★☒ **Envelope, 1934, 3¢ on 2¢ carmine, type 4 overprint (U15)**, knife 57, fresh and choice, Very Fine to Extremely Fine. Scott \$250. UPSS 39; \$300. Estimate \$200 - 300
- 1488 ★☒ **Envelope, 1934, 3¢ on 2¢ carmine, type 4 surcharge (U15)**, knife 91, scarce, difficult size for this; light stain at left, otherwise Very Fine. Scott \$250. UPSS 37; \$300. Estimate \$150 - 200
- 1489 ☒ **Envelope, 1934, 3¢ on 2¢ carmine (U15)**, scarce knife 78, with 2¢ Goethals stamp (Scott #106), tied by Balboa, Aug. 27, 1934, machine cancel, Seventh-Day Adventists corner card, to Jamaica, nice usage of very elusive uprated entire, lovely cover; slight tropical toning, otherwise Very Fine. Scott \$150. UPSS 38; \$500. Estimate \$300 - 400
- 1490 ★☒ **Airmail Envelope, 1929, 2¢ red, inscription centered (UC2a)**, crisp and sharp example of this elusive envelope, undervalued, Very Fine to Extremely Fine. Scott \$325. UPSS A4; \$350. Estimate \$300 - 400
- 1491 ★☒ **Registration Envelope, 1918, 10¢ on 5¢ black & red on cream, narrow surcharge (UF1)**, size 11, knife P-7, very scarce envelope, remarkably clean and attractive; minor flaws from mounting on back, still Very Fine, *only 9000 issued*; with 2001 P.F. certificate. Scott \$1,750. UPSS RE1; \$2,000. Estimate \$1,500 - 2,000



1492



1493



1494



1495



1496



1497



1498



1499



1500



1501



1502



1503



1504

- 1492** ★✉ **Registration Envelope, 1918, 10¢ on 5c black & red on cream, narrow surcharge (UF1),** size 22, knife P-8, excellent example of this scarcest of registration envelopes, Very Fine, *only 1000 issued*; with 1993 P.F. certificate. Scott \$1,750. UPSS RE2; \$3,000. Estimate \$1,500 - 2,000
- 1493** ✉ **Registration Envelope, 1924, 5c on 10¢ on 5c black & red on cream (UF1 var.),** used with Panama #225, 236 and H23, tied by Bocas Del Toro, July 7, 1924 postmarks with straight line "REGISTERED" etiquette, New Orleans transit and Chicago (July 15) receiver, scarce entire properly used from Panama to U.S., remarkably good condition for a used example; both regular issue stamps used to seal flap and torn in opening, Very Fine, *Higgins & Gage price supplement lists these as RRR.* Higgins and Gage Panama C-2. Estimate \$350 - 500
- This envelope order was placed with the American Bank Note Co. by Panama for the Canal Zone, as was required by the Taft Agreement. By the time they were received, the Canal Zone authorities rejected the entire shipment and returned them to Panama, who obliterated the words "CANAL ZONE" and the values and added the numeral "5" outside the frame on both sides and they were issued for use in Panama. They are quite scarce, particularly used and in such excellent condition.*
- 1494** ★✉ **Registration Envelope, 1918, 10¢ on 5c black & red on cream, wide surcharge (UF1a),** size 22, knife P-8, very scarce envelope, fresh and attractive, Very Fine, *only 9000 issued.* Scott \$1,300. UPSS RE4; \$1,750. Estimate \$1,200 - 1,800
- 1495** ★✉ **Registration Envelope, 1918, 10¢ on 5c black & red on cream, wide surcharge (UF1a),** size 11, knife P-7, incredible example, outstanding condition, scarce envelope, Extremely Fine, *16,000 of this size issued.* Scott \$1,300. UPSS RE3; \$1,500. Estimate \$1,000 - 1,500
- 1496** ★✉ **Postal Card, 1907, 1¢ on 2c carmine, "CANAL" 13mm (UX1d),** crisp and choice, Extremely Fine. Scott \$250. UPSS S2; \$250. Estimate \$200 - 300
- 1497** ★✉ **Postal Card, 1908, 1c green & black, type 5 overprint (UX2),** very scarce type, markedly undervalued; bit soft edge and corners, F.-V.F. Scott \$190. UPSS S7; \$300. Estimate \$200 - 300
- 1498** ★✉ **Postal Card, 1908, 1c green & black, type 7 overprint (UX2),** elusive card; slightly rounded corners, F.-V.F. Scott \$190. UPSS S9; \$200. Estimate \$150 - 200
- 1499** ★✉ **Postal Card, 1908, 1c green & black, type 3 overprint (UX2),** clean and neat, masonic message printed on back, Very Fine. Scott \$190. UPSS S5; \$225. Estimate \$150 - 200
- 1500** ★✉ **Postal Card, 1908, 1c green & black, period after "ZONE", type 6 overprint (UX2c),** fresh and choice, Very Fine. Scott \$200. UPSS S8; \$200. Estimate \$150 - 200
- 1501** ★✉ **Postal Card, 1908, 1c green & black, "CANAL" 15mm (UX2d),** fresh and sharp, Extremely Fine. Scott \$200. UPSS S4; \$200. Estimate \$150 - 200
- 1502** ★✉ **Postal Card, 1910, 1c green & black, type 4 overprint, broken "Z" (UX3 var.),** distinct example of variety, fresh and attractive, Very Fine to Extremely Fine. Scott \$190 for normal. UPSS S6b; \$200. Estimate \$150 - 200
- 1503** ★✉ **Postal Card, 1910, 1c green & black, type 4 overprint (UX3),** sharp and attractive, excellent example, Very Fine to Extremely Fine. Scott \$190. UPSS S6; \$200. Estimate \$150 - 200
- 1504** ★✉ **Postal Card, 1913, 1c green & black, 1923 Christmas Greeting, type L (UX4 var.),** scarce greeting card, sharp and choice; insignificant offset from greeting on front, Very Fine to Extremely Fine. UPSS CS14; \$500. Estimate \$350 - 500

From 1913 through at least 1923, unofficial Christmas Greetings were requested by the Supply Department of the Canal Zone Commission and printed by the Panama Canal Press at Mount Hope. The cards were sold at the commissary stores.



1505



1506



1507



1508



1509



1510



1511



1513



1514

1505 ★✉ Postal Card, 1921, 1c green (UX5), very scarce card, excellent example, clean and bright, Very Fine to Extremely Fine. Scott \$1,000. UPSS S12; \$1,200. Estimate \$800 - 1,200

1506 ★✉ Postal Card, 1921, 1c green, 1922 Christmas Greeting type J (UX5 var.), remarkably fresh and choice, scarce greeting on a scarce card; insignificant offset from greeting on front, Very Fine to Extremely Fine. Scott \$1,000 for normal. UPSS CS12; \$1,500. Estimate \$750 - 1,000

From 1913 through at least 1923, unofficial Christmas Greetings were requested by the Supply Department of the Canal Zone Commission and printed by the Panama Canal Press at Mount Hope. The cards were sold at the commissary stores.

1507 ★✉ Postal Card, 1924, 1c green, embossed (UX6), bright and choice, scarce card, Very Fine to Extremely Fine. Scott \$1,050. UPSS S13; \$1,000. Estimate \$750 - 1,000

The only embossed postal card issued by the U.S. Government. Produced by the American Bank Note Co. using a die similar to the 2¢ envelope. Issued in January 1924.

1508 ★✉ Postal Card, 1963, 3c+1c dark blue on buff, surcharge inverted at bottom left (UX13a), remarkable error, rare and attractive, Very Fine to Extremely Fine. Scott \$750. UPSS S21a; \$1,000. Estimate \$750 - 1,000

- 1509** ★✉ **Envelope, 1916, 2c carmine & black variety, with "T/1¢" War Tax surcharge essay (U2 var.),** rare essay on regularly issued envelope, most interesting piece of Canal Zone Postal History, enclosed in envelope is handwritten note, "One 2¢ sent to Earl Palmer through Ed McMahon 8/27/20 / One 1¢ sent to Gerald Bliss 8/27/20"; file folds at bottom and left, far from stamp, slight stain, Fine, *only two example known of this envelope.* UPSS 2 var. Estimate \$500 - 750
- An Act of Congress approved on Oct. 3, 1917, provided for an increase in various postal rates to help defray the costs of the War. On Oct. 19, Crede Calhoun, the Director of Posts of the Canal Zone, requested that the Panama Canal Press provide him with proofs on stamped paper with the overprint "T-1-cent", T for tax. Subsequently, a legal opinion determined that the tax could not be imposed in the Canal Zone without the authority of Congress. Because of this opinion, no further steps were taken, and the surcharges were never issued. Only a very few of these essays have ever come to light. They each vary slightly in terms of size and font. Included with the lot is a copy of an article from the Isthmian Collectors Club Journal concerning these facinating essays.*
- 1510** ★✉ **Envelope, 1916, 1c green & black variety, with "T/1¢" War Tax surcharge essay (U1 var.),** rare essay on regularly issued envelope, most interesting piece of Canal Zone Postal History; file folds at bottom and left, far from stamp, minor soiling, Fine, *only two example known of this envelope.* UPSS 1 var. Estimate \$500 - 750
- An Act of Congress approved on Oct. 3, 1917, provided for an increase in various postal rates to help defray the costs of the War. On Oct. 19, Crede Calhoun, the Director of Posts of the Canal Zone, requested that the Panama Canal Press provide him with proofs on stamped paper with the overprint "T-1-cent", T for tax. Subsequently, a legal opinion determined that the tax could not be imposed in the Canal Zone without the authority of Congress. Because of this opinion, no further steps were taken, and the surcharges were never issued. Only a very few of these essays have ever come to light. They each vary slightly in terms of size and font. Included with the lot is a copy of an article from the Isthmian Collectors Club Journal concerning these facinating essays.*
- 1511** ✉ **Postal Card, 1916, 1c green & black variety, with "T/1¢" War Tax surcharge essay (UX4 var.),** rare essay on regularly issued card, most interesting piece of Canal Zone Postal History; light toning at bottom right, Fine, *only example known of this card.* UPSS S11 var. Estimate \$500 - 750
- An Act of Congress approved on Oct. 3, 1917, provided for an increase in various postal rates to help defray the costs of the War. On Oct. 19, Crede Calhoun, the Director of Posts of the Canal Zone, requested that the Panama Canal Press provide him with proofs on stamped paper with the overprint "T-1-cent", T for tax. Subsequently, a legal opinion determined that the tax could not be imposed in the Canal Zone without the authority of Congress. Because of this opinion, no further steps were taken, and the surcharges were never issued. Only a very few of these essays have ever come to light. They each vary slightly in terms of size and font. Included with the lot is a copy of an article from the Isthmian Collectors Club Journal concerning these facinating essays.*
- 1512** ★/○✉ **Postal Stationery, 1907-78, massive group (U1/U23, UC1/UC16, UX1/UX21, UXC1/UXC5),** lifetime accumulation of a dedicated collector, one binder filled with a comprehensive collection of almost 100 mint and a few used stationery items with a basic example of almost all scott listed items (less some major items) and many varieties included, includes: mint #U1 (2), U2 (2), U6-U7 and U7a (2), U12 (2), U13 (9), UC1 (4), UC2 (4), UC2a, UX1, UX2 (2), UX3, UX4 (2), UX7 and UX8; another binder with about 75 select items of mint and used stationery less organized but containing many better items including: mint #U1 (2), U2, U5, U6 (2), U7 (3), a specialized collection of many U8's & U9's, U12 (4), UC1 (3), UC2 (2), UX1 (5), UX2 (5), UX3 (2), UX4 (2), UX7 (2), UX8 (2), used #UX2 (4), UX4 (6), UX8 (2); a large batch of loose used covers including: #U1 (3), U2 (many), U4 (8), U7, U9 (many), U13 (8) and UX4; three large envelopes of over 100 mint #U8-U9 comprising a specialized study; and two boxes containing many hundred more recent stationery items in quantity., an exciting assortment of hundreds and hundreds of pieces of Canal Zone postal stationery, including values up to \$200 or more, excellent condition and amazing variety, careful viewing will be rewarded, Very Fine overall. Estimate \$1,500 - 2,000
- 1513** ✉ **[Sea Post usage] 1907, 1c green & black (22),** fine, tied by rare **"N. Y. & COLON/NORTH/NOV 29 1907/R.P.O."** duplex (SP-1) on Maduro picture postcard depicting, "Old French dredge, Gorgona, Canal Zone, Panama." to U.S., rare Sea Post marking, only two recorded, excellent strike of this important marking, a Very Fine cover. Estimate \$200 - 300
- 1514** ✉ **[Sea Post usage] 1906, 5c - 8c, 1909, 8c and 1909, 1c type I, overprints (24-25, 29, 31),** fine to very fine, tied by cork cancels on registered cover to U.S., magenta "CRISTOBAL, C.Z./FEB 15 1913/REGISTERED." backstamps and matching straightline "CRISTOBAL." handstamp, also with very scarce, **"U. S. SEA POST./FEB 15 1913/REG."** backstamp (SP-Rg-2) and Washington, D.C.(Feb. 13) receiver, and with "PASSED FREE" customs handstamp, remarkable combination franking, very scarce Sea Post Special Service devise; tear at top of front and through back flap, some overall soiling, an F.-V.F. cover, Ex-Gibbs. Estimate \$250 - 350



1515



1516

- 1515** ☒ **[Sea Post usage] 1909, 10c violet & black (30)**, very fine, tied by crossroads cork and red "CRISTOBAL, C.Z./AUG 5 1909/REGISTERED." double circle postmark with matching registry exchange label handstamp on Panama Railroad Company cover to U.S. with rare "**JOHN SCHANZENBECHER, NEW YORK./AUG 5 North/ N. Y. & Canal Zone No. 1,**" in scalloped oval backstamp and red Boston (Aug 19) receiver, very attractive 10¢ solo use cover, rare sea post marking, choice cover; part of back flap missing, a Very Fine cover. Estimate \$150 - 200

The U.S.P.O.D. authorized R.P.O. service on the line of the Panama Railroad Steamship Company, between New York and the Canal Zone in 1907. John Schanzenbecher is listed as the first sea post clerk of the N. Y. and Colon R.P.O.

- 1516** ☒ **[Sea Post usage] 1915, 10c orange & black, 1912, 2c vermilion & black (45, 39)**, very fine, tied by two bar cancels on registered cover to U.S., "CULEBRA, C.Z./MAR 26 1915/REGISTERED." backstamps, "CRISTOBAL, CANAL ZONE/MAR 26 1915/REGISTERED." transit backstamp and rare "**NEW YORK, N. Y., Sea Post Service/MAR 27 1915/REGISTERED.**" double circle handstamp (SP-Rg-1), also Chicago (April 5) receiver, neat registered cover, very rare sea post special service devise, important example; tear at bottom front, still a Very Fine cover. Estimate \$150 - 200

- 1517** ☒ **Railway Mail Service, 1904-60, postal history collection**, a remarkable study collection in two overstuffed binders, over 250 cards and covers and various ephemera of all kinds exploring every aspect of the Panama Canal Railroad mail service, first volume contains numerous examples of every known marking to study and illustrate usages, types, train numbers (includes four of the very scarce double digit numbers used only on weekends and holidays), routes and various legs (including over a dozen of the scarce trains from the Las Cascades branch), the second volume includes an accumulation of all sorts of memorabilia items and commemorative covers and over 100 vintage picture postcards depicting stations, scenes and sights along the railroad, an incredible group that would surely be a strong basis for an award winning exhibit, outstanding depth and diversity, remarkable research and information compiled, a truly unique and desirable collection combining two of Mr. Campbell's loves, Canal Zone postal history and Railroads, and it's expressed in the selection and beauty of each and every cover, an Extremely Fine collection (photo on web site). Estimate \$2,000 - 3,000

- 1518** ☒ **Postal History remainder, 1904-78**, many hundreds of covers and cards, being the remainder of this incredible collection, starts with one binder of "unusual covers" comprising registered, navals (including Byrd expedition and "old iron-sides" covers), postage dues, incoming, scarce towns, etc.; one binder of more modern commercial covers including some scarce town and usages; a massive oversized binder of hundreds of covers featuring airmail rates and usages, airmail postcards, foreign mail, third class mail, post office openings and closings, and "classic" first days; a wonderful group of foreign airmail rates; a group of foreign International Response Coupons used in the Canal Zone; a group of U.S. Postal Agency, Cali, Columbia including registered; a 1917 G. W. Goethals signed letter concerning the Hudson River Tunnel; two sterilite tubs of assorted Canal Zone covers by number or category; a wooden drawer filled with assorted Canal Zone and other Possessions covers; and miscellaneous covers and ephemera of every description; the tail end of a remarkable postal history collection, a thorough review is assured of finding many hidden gems and lots of interesting and unusual and especially useful material, mixed but well above expected condition, generally Very Fine (photo on web site). Estimate \$1,500 - 2,000

- 1519** ☒ **Picture postcards, 1900-30, Canal Zone and Panama, mint and used**, huge lot of well over 1500 mostly different cards, appears to be about 3/4 or more used, remarkable diversity of manufacturers, frankings, usages, Post Offices, and destinations, some small percentage will be of more recent vintage but not a significant number, far better selection than usual, we would anticipate many hours of pleasure to go through this lot, and many exciting finds, seldom available in this quality and quantity, Very Fine lot (no photo). Estimate \$1,500 - 2,000

- 1520** ☒ **Sea Post and Paquebot covers, 1908-78, collection**, an amazing group in binder of well over 100 covers and cards displaying an incredible array of markings, practically every known marking is represented by from 1 to 10 uses, an impossible to replicate collection and a once-in-a-lifetime opportunity to acquire this comprehensive collection, superior quality and diversity, Very Fine to Extremely Fine for these (photo on web site). Estimate \$1,000 - 1,500

- 1521** ☒ **1926-78, extensive and detailed collection of event, first day and last day covers**, in seven overstuffed binders; well over 1000 covers in all, including mounted exhibit collection of 52 Last Day covers with broad range 80 different postal issues including some obsolete issues of Panama overprints; binder of 130+ U.S. event and first day covers related to the Canal Zone; binder first day covers 83 1928-78 regular issues and 97 1939-76 airmails; binder of first day covers about 120 1946-76 regular issues and 90 1951-65 airmails; binder of 45 1934-78 event covers and 85 1951-78 slogan cancels; binder of 110 1939-78 mixed first day covers; binder of 57 1926-49 first day and first flight covers; binder of almost 150 last day covers, post office picture postcards and later A.P.O.'s, large and diverse group of mostly philatelic covers, mostly cacheted where appropriate, virtually all different, impossible to duplicate accumulation, better than usual condition, mostly Very Fine (photo on web site). Estimate \$1,000 - 1,500
- 1522** ☒ **1942-46, A.P.O. covers**, large and diverse group of 128 Army Post Office covers in large binder, many better including 841 David, 662 Seymour Island, 817 Talara and 897 San Jose Island, a huge array of postmarks, frankings, usages, censor's marks, etc., better than usual but still mixed condition, years in the making, an important and interesting lot, generally Very Fine (photo on web site). Estimate \$500 - 750
- 1523** ☒ **Naval covers, 1924-41**, two binders stuffed with almost 175 ships covers, at or transiting the Canal, virtually all different includes Byrd Expedition and Old Ironsides among others, excellent selection, superior condition, many with cachets, lovely group, generally Very Fine (photo on web site). Estimate \$350 - 500
- 1524** ☒ **Announcement Cards and Postal Forms, 1940-79**, 69 assorted postal announcement cards, minimal duplication, and 44 various postal forms, diverse group, difficult to duplicate, Very Fine (photo on web site). Estimate \$100 - 150

CANAL ZONE LITERATURE

- 1525** **Annual Report of the Panama Canal Commission, 1905-1914**, 1905, 1906, 1909, 1910, 1911(2), 1912, 1913 and 1914(2), softbound, also included are: Report of the Board of Consulting Engineers for the Panama Canal along with boxed set of 31 Maps and Diagrams, 1906; Annual Report of the Department of Sanitation of the Isthmian Canal Commission, 1908 and 1909; Annual Report of the Department of Health of the Isthmian Canal Commission, 1906; Report of the Department of Health of the Isthmian Canal Commission, Month of February, 1907; A Protest Against the Humiliating Surrender of Every American Right at Panama, Speech of Hon. Joseph R. Knowland in the House of Representatives, Mar. 28, 1914; group of 163 I.C.C. Lithographs of Construction Plans and Equipment (8-3/4" x 13-1/4" +/-), c. 1914; Report of the Committee of the National Academy of Sciences on Panama Canal Slides (including 51 remarkable illustrations), 1924, impossible to find group of government documents, creating a comprehensive picture of the building of the Panama Canal; fair to very good condition, readable and useable, *some chipping, cracking and splitting as to be expected* (photo on web site). Estimate \$350 - 500
- 1526** **Rear-Admiral John G. Walker, Report of the Isthmian Canal Commission, 1899-1901**, 688 page report plus separate binder including 86 plates, mostly historical maps and charts, the commission tasked with investigating the feasibility of the various routes for an interoceanic canal, under an act of congress, Mar. 3, 1899, an incredibly comprehensive study of possible canal routes including numerous interesting and important maps; very nice condition in original leather binding (photo on web site). Estimate \$200 - 300
- 1527** **Panama Canal library, 1852-2011**, dozens of book about the Canal, includes mostly early and period pieces, and a few more recent studies, Highlights include: **Life on the Isthmus, Putnam, 1852**; Report on Interoceanic Canals and Railroads Between the Atlantic and Pacific Oceans, Rear-Admiral Charles H. Davis, 1867; Notes on Mitering Lock Gates. Hodges, 1892; Report to the Seventh International Congress of Navigation, Corthell, 1900; The Panama Canal, Bates, 1905; Panama; The Isthmus and the Canal, Forbes-Lindsay, 1906; Canal Zone Pilot, Bienkowski, 1908; On The Canal Zone, Grier, 1908; The Conquest of the Isthmus, Weir, 1909; Panama and the Canal To-Day, Lindsay, 1910; Panama and the Canal, Hall, 1910; Boy Scouts in the Canal Zone, Ralphson, 1911; Joseph Pennell's Pictures of the Panama Canal, Pennell, 1912; Uncle Sam's Panama Canal and World History, Bishop, 1913; The Panama Gateway, Bishop, 1913; Panama and the Canal, Abbot, 1913; The Story of the Panama Canal, Marshall, 1913; Panama Canal, Barrett, 1913; America's Triumph at Panama, Avery, 1913; The Panama Canal, Haskins, 1913; Zone Policeman 88, Franck, 1913; The Panama Canal, Bakenhus, 1915; Government of the Canal Zone, Goethals, 1915; Panama Passage, Chidsey, 1916; Panama Past and Present, Bishop, 1916; Society of the Chagres, Year Book 1916-17, Swanson, 1917; The Great Adventure of Panama, Bunau-Varilla, 1920; Picturesque Panama, Heald, 1928; The Isthmian Highway, Miller (inscribed), 1929; The Panama Canal Twenty-fifth Anniversary, Hardy, 1939; The Land Divided, Mack, 1944; The Chagres: River of Westward Passage, Minter, 1948; The Strength to Move a Mountain, Lee, 1958; The Golden Isthmus, Howarth, 1967; The Panama Canal, Chidsey, 1970; The Building of the Panama Canal, Keller, 1983; Panama's Canal, Falcoff, 1998; Isthmian Passages, Pascual, 2010; The Big Ditch, Maurer, 2011 and a binder full of booklets and pamphlets 1879-1930's relating to the Canal and Panama, an incredible library from the rare to the mundane, many important tomes (photo on web site). Estimate \$400 - 600

- 1528** ***The Canal Record, 1907-16***, Volume 1-5 (each individually hardbound), Volume 6-9 (unbound), the official publication of the Panama Canal, published weekly, the paper of record for the Zone, every conceivable statistic concerning the Construction of the Canal, movement of ships, personal and official stories, information and events, an exhaustive resource, the official week by week record of the Canal construction (photo on web site). Estimate \$350 - 500
- 1529** **Canal Zone library, 1904-1978**, three cartons of specialized literature of all aspects of Canal Zone philately including: Canal Zone Stamps, Tatelman (several copies); Canal Zone Postal Stationery, Gibbs (several editions), C.Z.S.G. Checklist of Canal Zone Stamps, Spielberg; Canal Zone Airmail Rates, Brougham; Napp's Numbers, Napp; The Postal Markings of the Canal Zone and suppliments, Entwistle; Canal Zone Stamps, Plass (1st & 3rd editions); Canal Zone and Panama Aerophilately and Philately Associated with the First Byrd Antartic Expedition, 1928-1930, Grigore; The Panama Line, Bentz (manuscript); The Panama Canal Story, Ireson (disk and hard copy); The Story of Canal Zone Stamps, Dade-Schay; a complete run of "Isthmian Collectors Club Newsletter, Karrer; all the handbooks published by the C.Z.P.S.; slide presentation "Canal Zone Gems" by J.T. DeVoss; Panama Patchwork Revisited; Canal Zone Aerophilately; Postal Markings of the CZ, 2nd Ed; CZ Official Postal Guide, 1929; US Domestic Postal Rates 1872-1999; Name Auction Catalogues (most w/ prices realized): Conger, 1969; Brooks, 1973; Stull, 1976; Helme, 1996; Del Parker, 2003; "Eagle", 2000; Salz, 2010; Salz II, 2011; Drucker, 2003; HRH Hawaii & CZ, 2006; Jackson, 2011; Laila, 2009; Diamond, 2013; HRH US Possessions, 2007; HRH Possessions, 2011, a superb library on Canal Zone Philately, a few duplicates, some annotated by Mr. Campbell (photo on web site). Estimate \$350 - 500
- 1530** ***The Panama Canal Record, 1916-32***, unbound, volumes 10-14, 15 (missing #21-52), 16-22, 24, 26 and some later numbers, the official publication of the Panama Canal, published weekly, the paper of record for the Zone, every conceivable statistic concerning the Canal and its traffic, movement of ships, an exhaustive resource, excellent run of this important and useful magazine (no photo). Estimate \$250 - 350

PANAMA

- 1531** **1880-88, French Canal Company bonds, six different**, comprising the following: **Compagnie Universelle du Canal Interocéanique de Panama** bonds: 1880 blue with two fiscal stamps and 12 coupons remaining, 1882-83 pinkish red with 34 coupons, 1882-84 green with 25 coupons, 1883-84 black with 32 coupons, 1885-86 brown with 32 coupons, and 1888 red with 11 fiscal stamps (3 different), a diverse and attractive group, an interesting glimpse into the failed french effort and an important piece of Panama Canal history, generally Very Fine (photo on web site). Estimate \$200 - 300
- 1532** ★/○/☒ **1879-1965, collection (1/458, B-O-B)**, exciting accumulation, mounted on album pages and box of covers, appears to be several collections combined, contains an impressive selection of early issues, particularly strong in the map issues to peso values and numerous blocks and varieties, a nice run of later issues to around 1965, extensive back of the book issues included, also included is a medium box of covers and mint and used postal stationery, diverse and interesting group, certainly worthy of a good look, needs a lot of work but would make an excellent basis for study, expansion or breaking down, much is Very Fine (photo on web site). Estimate \$500 - 750



Ex 1533



1534



1535

U.S. OFFICES IN CHINA

- 1533 ★ Offices in China, 1919, 2¢ to \$2 complete with shades (K1-K16, K8a, K11a),** o.g., lightly hinged or hinge remnant, 6¢ never hinged, Bright and attractive set, better than usual, many choice appearing stamps; 20¢, 30¢, 60¢, \$1 and \$2 with tiny thin spots, Very Fine overall. Scott \$2,085. Estimate \$1,000 - 1,500
- 1534 ★ Offices in China, 1919, 2¢-8¢, 12¢-14¢, 18¢, 30¢-60¢ and 1922 2¢-4¢ surcharges (K1-K4, K6-K7, K9, K12-K14, K17-K18),** o.g., hinged, some with small hinge remnants, nice group, usual centering but generally pretty good for these, F.-V.F. Scott \$880. Estimate \$500 - 750
- 1535 ★★ Offices in China, 1922, 2¢ to 4¢ complete (K17-K18),** o.g., never hinged, slightly tropicalized gum, fresh and attractive for this desirable and difficult set, Very Fine. Scott \$435. Estimate \$300 - 400

CUBA

- 1536 ★ 1899-1928, small collection of regulars, special delivery and dues (221//237, E1//E5, J1//J10),** on pages including #221-226 (plus 225 "CUPA" variety), 226-230, 233-237, E1-E3 and J1-J10, also includes some duplicates and a small group of Spanish era stamps, o.g., hinged to never hinged, generally very nice condition, many never hinged, well centered, mostly Very Fine. Scott \$635+ (photo on web site). Estimate \$200 - 300

DANISH WEST INDIES

- 1537 ★/○ 1856-1915, collection (1//58, J1-J8),** on handmade album pages, extensive group including mint, used and varieties, highlights include: used #1 and 20, unused #3, 14 (3), 16a, 17a, 19a, 20b, 23, 37-39 and J1-J8, also included are dozens of better 1874-1902 numeral issue stamps mint and used, Christian IX complete mint and used and Christian X complete mint (photo on web site). Estimate \$500 - 750
- 1538 ★✉ 1877-1916, Postal Stationery accumulation (U1//U2, UX1//UX14, UY1//UY12),** 110 items as follows: U1(16), U2(16), UX1(6), UX3(2), UX4(5), UX6(2), UX7, UX8(4), UX9, UX10, UX11(10), UX12(6), UX13(4), UX14(5), UY1(2), UY2(8), UY3(4), UY6, UY8, UY9(6), UY10(5), UY11(3) and UY12, many varieties and shades, worthy of further study; somewhat mixed condition, mostly F.-V.F. Scott \$2,344 as normal (photo on web site). Estimate \$350 - 500
- 1539 ★/○ 1855-1915, collection (1//58, J1-J8),** small but valuable group on Scott pages, mint and used, highlights unused include #1, 11a, 13 (defects), 14, 37-39 and J1-J8, used include #2, 3, 4, 12-13 (minor defects), and 43-50, many additional stamps and two postal cards also included, mixed condition but many sound and attractive stamps, excellent collection to cherry pick for useful stamps, generally F.-V.F. (photo on web site). Estimate \$350 - 500



1540



1541



1542



1543



1544



1545



1546



1548



1549



Ex 1547

GUAM

- 1540 ★ 1899, 10c brown, type II (9)**, o.g., hinge remnant, clean and sharp, uncharacteristically well centered example of this quite difficult stamp, particularly appealing, Very Fine; with 2013 A.P.S. certificate. Scott \$2,750. Estimate \$2,000 - 3,000
- 1541 ★ 1899, 50c orange (11)**, o.g., small hinge remnant, deep rich color, incredible centering for this very tough stamp, a fabulous example, Extremely Fine. Scott \$350. Estimate \$350 - 500
- 1542 ★ 1899, \$1 black, type I (12)**, o.g., small hinge remnant, crisp and sharp, well centered example of this difficult stamp, most handsome, Very Fine. Scott \$350. Estimate \$250 - 350
- 1543 ★ 1899, \$1 black, type II (13)**, o.g., lightly hinged, sharp impression, better than usual centering, excellent appearance for this scarce special printing, F.-V.F.; with 1978 P.F. certificate. Scott \$3,750. Estimate \$2,500 - 3,500
- 1544 ★ Guard Mail, 1930, 2c green (M1)**, slightly tropicalized o.g. (certificate calls "part original gum"), bright, better centered than most of these, scarce stamp, Very Fine for this; with 2004 A.P.S. certificate. Scott \$400. Estimate \$300 - 400
- 1545 ★ Guard Mail, 1930, 2c green (M1)**, o.g., lightly hinged, fresh and attractive, scarce stamp, better than usual centering, F.-V.F. Scott \$400. Estimate \$300 - 400
- 1546 ★★ Guard Mail, 1930, 4c carmine (M2)**, o.g., never hinged (light natural gum wrinkle), deep color, large margins, near perfect centering, scarce stamp, Extremely Fine. Scott \$325. Estimate \$250 - 350
- 1547 (★) Guard Mail, 1930, 1c-2c complete (M3-M4)**, 2c with partial watermark, without gum as issued, choice set, strong colors and impression, Very Fine to Extremely Fine. Scott \$195. Estimate \$150 - 200
- 1548 ★ Guard Mail, 1930, 2c green, "GRAUD" (M7a)**, position 63, o.g., very lightly hinged, outstanding example, bright and colorful, large margins, Very Fine to Extremely Fine, *only 500 issued (seems more difficult to find)*; with 1989 P.F. certificate. Scott \$425. Estimate \$350 - 500
- 1549 ★ Guard Mail, 1930, 2c green, "MIAL" (M7b)**, position 84, o.g., lightly hinged, fresh and attractive example of this interesting and sought after error, Very Fine, *only 500 issued (seems more difficult to find)*; with 2002 A.P.S. certificate. Scott \$425. Estimate \$350 - 500
- 1550 ★ 1899-1930, remainder of collection (1/10, E1, M3/M11)**, mounted on album pages, included are unused #1-8 and 10 (4c & 6c never hinged), 2 (block), E1, M3-M4, M5-M11 and used #2a, o.g., lightly hinged or never hinged, generally fresh and attractive, much better than usual for these, Very Fine. Scott \$1,500+ (photo on web site). Estimate \$500 - 750



1551



1553



1554



1555



1556



1557

HAWAII

- 1551 (★) 1853, 5¢ blue, thick white paper (5)**, unused without gum, excellent color and impression, margins ample to just touching at top right, quite attractive and desirable example of this scarce unused stamp, Very Fine. Scott \$1,900.
Estimate \$1,500 - 2,000



- 1552 ○ 1857, 5¢ manuscript surcharge on 13¢ dark red (7)**, type I (Clark) numeral, indistinct town postmark, nice presentable used example of this rare provisional surcharge, ample margins to cutting on two sides; minor repaired faults, Fine; with 2016 P.F. certificate. Scott \$10,000.
Estimate \$5,000 - 7,500

In early 1857 the Honolulu Post Office applied the 5(cent) manuscript provisional surcharge to existing 13¢ Kamehameha III issues (Scott #6) due to a shortage of regular 5¢ stamps. Their use was shortlived due to a second shipment of 5¢ stamps received in mid-1857 (Scott #8), thus the scarcity of used examples of the provisional.

- 1553 (★) 1857, 5¢ blue, thin white paper (8)**, unused without gum, four margins, rich color and impression, handsome stamp, F.-V.F. Scott \$700.
Estimate \$500 - 750
- 1554 ○ 1857, 5¢ blue, thin white paper (8)**, target cancel, large margins, excellent example of scarce used stamp; small corner crease, Very Fine. Scott \$750.
Estimate \$500 - 750
- 1555 ★ 1861, 5¢ blue, thin bluish paper (9)**, o.g., paper hinge remnants, large margins to touching at bottom, crisp and clean, F.-V.F. Scott \$400.
Estimate \$250 - 350
- 1556 (★) 1859, 1¢ light blue on bluish white (12)**, Plate 2A Type I, Position 3, unused without gum, rare and sought after early printing 1¢ numeral, ample margins on two side and most of the third (touching at top right), top margin mostly missing, still a quite presentable appearing example of this rare numeral; small thin and margin tear at right, still Fine; with 2014 P.S.A.G. certificate. Scott \$15,000.
Estimate \$5,000 - 7,500
- 1557 ○ 1859, 2¢ light blue on bluish white (13)**, Plate 3B Type IV, position 4, manuscript squiggly cancels, four large even margins, impressive appearance for this very scarce and desirable early numeral; small thin spot at bottom, scissor cut in top margin, Very Fine to Extremely Fine appearance. Scott \$5,000.
Estimate \$2,000 - 3,000



1558



1559



1560



1561



1562



1563



1564



1565



1566



1567



1568



1569



1570



1571



Ex 1572



1573



1574

1558 ○ **1862, 2¢ black on greenish blue (14)**, Plate 3-Gx, type I, position 3, manuscript "X" cancel, margins showing most of four framelines to cutting at top right, quite distinct paper color of this very scarce numeral; light diagonal crease, tiny thin speck, Fine and attractive. Scott \$6,000. Estimate \$3,500 - 5,000

When the grayish paper of #16 ran out the greenish blue was used as a substitute at the end of the press run.

1559 (★) **1863, 2¢ black on grayish (16)**, Plate 3-F, type VI, position 6, unused without gum, four almost complete framelines to just touching at right bottom, clean and sharp, lovely example of this scarce numeral, Very Fine and attractive. Scott \$1,000. Estimate \$750 - 1,000

- 1560 ○ **1863, 2¢ dark blue on bluish (17)**, Plate 5-B, type X, position 10, neat square grid cancel, four clear to just in margins, quite handsome example of this very scarce numeral; sealed tear at left, otherwise Very Fine. Scott \$8,750.
Estimate \$3,500 - 5,000
- 1561 (★) **1863, 2¢ black on blue gray (18)**, Plate 5-A, type III, position 3, unused without gum, fresh and crisp, large balanced margins all around, a superior example of this very scarce numeral, Very Fine to Extremely Fine; with 2003 P.F. certificate. Scott \$3,250.
Estimate \$3,000 - 4,000
- 1562 ★ **1864, 1¢ black (19)**, Plate 6-A, type VII, position 7, raised "I" of "INTER", large part o.g., ample to very large margins, interesting and important position, rarely seen so nice and with original gum, Very Fine to Extremely Fine. Scott \$625.
Estimate \$500 - 750
- The perfect companion piece to the following lot.*
- 1563 (★) **1864, 2¢ black (20)**, Plate 5-C, type VII, position 7, raised "I" of "INTER", unused without gum, ample to large margins all around, interesting and important position, an impressive example; tiny thin speck, Very Fine to Extremely Fine. Scott \$775.
Estimate \$600 - 800
- The perfect companion piece to the preceeding lot.*
- 1564 ★ **1865, 5¢ blue on blue (21)**, Plate 9-A, type V, position 5, part o.g., enormous margins all around, outstanding example, a real eye-popper, rarely found with original gum; couple of slight thins, and a bit of light gum staining, Extremely Fine to Superb; with 2007 A.P.S. certificate. Scott \$900.
Estimate \$750 - 1,000
- 1565 ○ **1865, 5¢ blue on blue (22)**, Plate 12-A, type VII, position 3, square grid cancels, ample to large margins, good colors, pretty used example of scarce numeral; tiny paper flaw at top left, Very Fine to Extremely Fine; signed J. W. Scott Co. Scott \$900.
Estimate \$750 - 1,000
- 1566 (★) **1864, 1¢ black (23)**, Plate 8-A, type VI, position 5, unused without gum, large balanced margins, crisp and sharp, excellent example, Extremely Fine. Scott \$300.
Estimate \$200 - 300
- 1567 (★) **1864, 2¢ black (24)**, Plate 7-A, type IX, position 9, unused without gum, well centered large margins, a particularly appealing example, Very Fine to Extremely Fine; with 1988 A.P.S. certificate. Scott \$350.
Estimate \$250 - 350
- 1568 ★ **1865, 1¢ dark blue (25)**, Plate 11-A, type VI, position 6, o.g., paper hinge remnant, deep color, ample margins to just touching at bottom, handsome numeral, almost Very Fine. Scott \$350.
Estimate \$200 - 300
- 1569 (★) **1865, 2¢ dark blue (26)**, Plate 10-A, type I, position 9, unused without gum, four margins to just clearing at top right, attractive stamp, almost Very Fine; with 2003 P.F. certificate. Scott \$350.
Estimate \$200 - 300
- 1570 (★) **1861, 2¢ pale rose, horizontally laid paper (27 var.)**, very interesting unrecorded short transfer to the left of the left "2", unused without gum, nice four margin example, an exciting variety for this stamp; insignificant crease at bottom left, Very Fine. Scott \$350 for normal.
Estimate \$350 - 500
- 1571 (★) **1861, 2¢ pale rose, vertically laid paper (28)**, unused without gum, bright shade, four margins, pleasing example this difficult stamp, Very Fine. Scott \$325.
Estimate \$250 - 350
- 1572 ★/(★) **1883-86, 1¢-\$1 Bank Notes complete (42-49)**, o.g. or without gum, bright and attractive set, better than usual for these, a Very Fine set. Scott \$868.
Estimate \$500 - 750
- 1573 ★ **1893, 1¢ to 25¢, red overprint (53-61, 62-64)**, o.g., hinged to never hinged, quite attractive group, particularly fresh and well centered for these, #54-56 and 64 are never hinged; #59 with minor defect, a Very Fine set. Scott \$312.
Estimate \$150 - 200
- 1574 ★ **1893, 10¢ red brown, red overprint (61B)**, plated position 8 in W.R. Beardsley study, o.g., hinge remnants, rare overprint error, completely sound and fresh, one of the best of the off-centered examples of this iconic stamp, Fine; with 1978 P.F. certificate. Scott \$15,000.
Estimate \$7,500 - 10,000

Only one pane of fifty of this overprint color error was printed, of which eight were reportedly destroyed in the San Francisco earthquake leaving 42, at most, available for collectors.



1575



1577



Ex 1579



1580



1581



1582



1583



1584



Ex 1585



1586



1587



1588



Ex 1589



Ex 1590



Ex 1591



Ex 1592



Ex 1593

1575 ★ 1893, 2¢ to \$1 banknotes, black overprint (65-66, 67-73), o.g., hinged, excellent group, fresh and attractive, much nicer than usual; couple with minor defects including #73, almost Very Fine. Scott \$790. Estimate \$400 - 600

1576 ✉ Postal Stationery, 1882-97, envelopes, postal cards, pair reply cards (U1//U13, UE1, UX1//UX9, UY1-UY4), 38 unused and 1 used items comprising: #U1-U5 (extra U1), two sets U10-U13 (extra U11), UE1, UX1, UX2 (2), UX2a, UX3 (defect), UX4, Ux4 used, UX5, UX6, UX7 (2), UX8 (2), UX9 (2), UY1-UY4 (UY2 stain), UY1m, UY2m, UY2r and UY4m, mostly better than usual for these; couple of defects as noted, otherwise Very Fine. Scott \$3,192 (photo on web site). Estimate \$400 - 600

1577 ★ **Revenue, 1877, \$10 reddish brown & green (R5)**, o.g., hinge remnant, bright and handsome, elusive value, F.-V.F. Scott \$260. Estimate \$150 - 200

1578 ★/(★) **Collection remainder, 1868-99 (10//82, O1-O6, 10S//51S)**, attractive group including unused #10, 29, 30-34 (plus shades), 35-36, 37-41, 50-51, 52-52C, 74-79, 80-82, O1-O6, 10S, 11S, 29S, 50S, 51S, also included are a couple of used stamps and a few likely forgeries (not counted), o.g. or without gum, excellent remainder group, many fresh and attractive examples, well above average; few minor defects, much is Very Fine. Scott \$1,922 (photo on web site). Estimate \$750 - 1,000

PHILIPPINES

1579 ★ **1899, ½¢-50¢ and 4¢-8¢ diagonal overprints complete (213-219, 220-222)**, o.g., hinged, bold colorful set, exceptionally well centered for these; 50¢ small thin, a Very Fine set. Scott \$448. Estimate \$200 - 300

1580 ★★ **1899, 50¢ orange (219)**, o.g., never hinged, nice color and sharp impression, elusive never hinged example, F.-V.F. Scott \$300. Estimate \$200 - 300

1581 ★ **1901, \$1 black, type I (223)**, o.g., hinged, bright, excellent contrast, handsome example, F.-V.F. Scott \$300. Estimate \$200 - 300

1582 ★ **1901, \$1 black, type II (223A)**, o.g., lightly hinged, bold and attractive example of this scarce and desirable stamp, F.-V.F. Scott \$1,500. Estimate \$1,000 - 1,500

1583 ★ **1901, \$2 dark blue (224)**, o.g., lightly hinged, fresh, bold rich color, nicely centered, a really pretty example of this scarce and difficult stamp, Very Fine, *only 1800 issued*. Scott \$350. Estimate \$300 - 400

1584 ★ **1901, \$5 dark green (225)**, o.g., hinged, bright, deep rich color, quite nice example of this scarce high value; small thin speck, almost Very Fine. Scott \$500. Estimate \$250 - 350

1585 ★ **1903, 1¢-50¢ values and 4¢ shade (226-236, 229a)**, o.g., hinged, fresh and bright, excellent group, very well centered for these, mostly Very Fine. Scott \$651. Estimate \$350 - 500

1586 ★ **1904, \$1 black (237)**, part o.g., well centered, bright and attractive, lovely stamp, Very Fine, *only 5617 issued*. Scott \$300. Estimate \$200 - 300

1587 ★ **1904, \$2 dark blue (238)**, o.g., lightly hinged, fresh, bold color, large balanced margins, marvelous example of this scarce and undervalued stamp, Very Fine to Extremely Fine, *only 695 issued*; with 2002 P.F. certificate. Scott \$550. Estimate \$400 - 600

1588 ★ **1904, \$5 dark green (239)**, o.g., lightly hinged, attractive example of this scarce and undervalued high value; tiny perf thin, F.-V.F., *only 746 issued*. Scott \$800. Estimate \$500 - 750

1589 ★ **1906, 2c-10p definitive complete (241-254)**, nice and clean, a handsome set, F.-V.F. Scott \$541. Estimate \$300 - 400

1590 ★ **1909, 12c-2p definitive complete (255-260A)**, slightly tropicalized o.g., select set, particularly well centered and attractive for these, some real winners, Very Fine to Extremely Fine. Scott \$188. Estimate \$150 - 200

1591 ★ **1911, 2c-10p definitive complete (261-274)**, o.g., lightly hinged, fresh and lovely set, especially nice high values, mostly Very Fine or better. Scott \$867. Estimate \$600 - 800

1592 ★ **1914, 2c-1p definitive complete (276-284)**, o.g., lightly hinged or hinge remnant, fresh and bright, select set, most Very Fine or better. Scott \$487. Estimate \$350 - 500

1593 ★ **1918, 2c-1p definitive complete (285-289D)**, o.g., hinged, 6¢ never hinged, marvelous set of these difficult stamps, sharp and choice, Very Fine to Extremely Fine. Scott \$897. Estimate \$600 - 800



Ex 1594



Ex 1595



Ex 1596



1599



1598



Ex 1597



1600



1601



1603



1604



1605



1606



1607



1608

1594 ★ 1917, 2c-4p definitive complete and 16c-10p (290-302, 303-304), o.g., hinged, bright and colorful, outstanding centering, couple of plate number singles as icing on the cake, Very Fine to Extremely Fine. Scott \$227.

Estimate \$150 - 200

1595 ★ 1931, 2c-10p imperf definitives complete (340-353), o.g., lightly hinged or never hinged, choice set, all with large margins, fresh and bright, many never hinged including 2p and 4p; two low values no gum, Extremely Fine to Superb. Scott \$339 as hinged.

Estimate \$250 - 350

1596 ★ 1931, 2c-10p imperf definitives complete (340-353), o.g., most lightly hinged, fresh and attractive set, much sought after, Extremely Fine. Scott \$339.

Estimate \$250 - 350

1597 ★ 1938-40, 2c-5p Commonwealth overprints complete (433-446), o.g., most lightly hinged, attractive set, 4p and 5p never hinged, desirable, Very Fine. Scott \$379. Estimate \$200 - 300

1598 ★★ 1939, 2c rose, lower left stamp overprinted "WEALTH / COMMON-" (433b), booklet pane of 6 with booklet covers and interleaving included, o.g., never hinged, very rare booklet pane error, post office fresh, the stamps are all very well centered (especially the error) but the pane is cut at a slight angle, still Very Fine to Extremely Fine. Scott \$3,250. Estimate \$2,000 - 3,000

Approximately 24 of the Small Commonwealth panes were printed with the overprint transposed, with "WEALTH" above "COMMON." The error always occurs on the bottom-left stamp of the pane.

1599 ★ 1944, 2c rose, handstamped "VICTORY" (463), slightly tropicalized o.g., very scarce unused single from booklet pane, usual centering; natural straight edge (as always), light gum stain on right edge, Fine, *only 168 issued with only 6 unused examples recorded in the Brewster census*; with 2019 P.F. certificate. Scott \$1,250. Estimate \$1,000 - 1,500

1600 ★ 1944, 6c dark brown, handstamped "VICTORY" (466), slightly disturbed o.g. with small hinge remnants (certificate says part OG, to which we disagree), fresh, exceptionally well centered for this value, clearly one of the finest examples of one of the rarest VICTORIES, Very Fine, *Brewster estimates 108 of the 6c brown were overprinted; his census includes 20 unused examples. Scott lists 64 issued.*; with 2016 P.S.A.G. certificate. Scott \$3,250. Estimate \$3,000 - 3,500

1601 ★ 1944, 6c yellow green, handstamped "VICTORY" (467), o.g., lightly hinged, bright and bold, large margins, superior example of elusive value, Very Fine and choice. Scott \$300. Estimate \$300 - 400



1602 (★) 1944, 6c dark brown, handstamped "VICTORY" (468), unused without gum, one of the rarest of the VICTORY's, better centered than most of these; small ink spot at upper right, Very Fine for this, *only 206 were issued and the Brewster census records only 47 examples*; with 2016 P.S.A.G. certificate. Scott \$4,750. Estimate \$4,000 - 5,000

1603 ★ 1944, 6c carmine, handstamped "VICTORY" (469), tropicalized o.g., typical centering for this value, scarce and desirable; some minor gum soakage, mostly along right edge, Fine, *only 235 issued*; with 2007 P.F. certificate. Scott \$350. Estimate \$200 - 300

1604 ★ 1944, 6c orange, handstamped "VICTORY" (470), o.g., hinged twice, scarce value, a very nice example with no tropicalization or wax paper adhering as on so many, highly sought after, F.-V.F., *only 141 issued of which Brewster census records 43 unused examples in singles and blocks*. Scott \$1,750. Estimate \$1,500 - 2,000

1605 ○ 1944, 6c dark green, handstamped "VICTORY" (471), edge of black duplex cancel, well centered, scarce used, a pleasing example, Very Fine. Scott \$225. Estimate \$200 - 300

1606 ★ 1944, 10c rose carmine, handstamped "VICTORY" (473), slightly tropicalized o.g., bright, vibrant color, particularly well centered for this, fabulous example, Very Fine, *only 450 overprinted*. Scott \$350. Estimate \$350 - 500

1607 ★ 1944, 10c rose carmine, handstamped "VICTORY" (474), pair, tropicalized o.g., clean and attractive, better than usual centering, scarce multiple, F.-V.F., *only 358 overprinted*, Ex-Miggins; with 1990 P.F. certificate. Scott \$550. Estimate \$400 - 600

1608 (★) 1944, 12c ultramarine, handstamped "VICTORY" (475), unused without gum, nice color, very well centered for this difficult stamp, scarce and desirable, Very Fine, *only 221 were produced, the Brewster survey reports 51 unused examples*; with 2013 P.F. certificate. Scott \$1,100. Estimate \$1,000 - 1,500



1609



1610



1611



1612



1613



1614



1615



1616



1617



1618



1619



1620



1621



1622



1623



1624



1625



1626

1609 ★ 1944, 12c purple, handstamped "VICTORY" (477), early state (unbroken) overprint, tropicalized o.g., fresh, very well centered for this value, certainly among the finest known examples of this very difficult item, Very Fine, only 221 were produced. Scott \$500. Estimate \$500 - 750

1610 ★ 1944, 16c dark blue, handstamped "VICTORY" (480), slightly tropicalized o.g., delightful example, bright, well centered for one of these, an excellent piece, Very Fine, only 500 overprinted, 62 unused example in Brewster census; with 1972 A.P.S. certificate. Scott \$500. Estimate \$400 - 600

- 1611 ★ **1944, 20c light olive green, handstamped "VICTORY" (481)**, o.g., barest trace of hinge, remarkably fresh and well centered, an outstanding example of this scarce stamp, Very Fine, *1401 issued*; with 2015 P.F. certificate. Scott \$140.
Estimate \$150 - 200
- 1612 (★) **1944, 30c orange red, handstamped "VICTORY" (482)**, unused without gum, sharp and well centered example of this scarce VICTORY; light corner crease, Very Fine, *only 248 produced, 89 examples recorded in Brewster census*; with 2013 P.F. certificate. Scott \$450.
Estimate \$350 - 500
- 1613 ★ **1944, 30c orange red, handstamped "VICTORY" (483)**, disturbed o.g., well centered, quite presentable example of this very difficult value; minor creasing in top margin, slight gum soakage, Very Fine, *only 200 issued, 53 unused examples recorded by Brewster census*; with 2016 P.F. certificate. Scott \$800.
Estimate \$600 - 800
- 1614 ★ **Airmail, 1926, 2c-12c, 16c-30c Madrid-Manila Flight (C1-C6, C9-C12)**, o.g., hinged, fresh and handsome group of early airmails; 12c with gum soaks, much is Very Fine or better. Scott \$755.
Estimate \$400 - 600
- 1615 ★ **Airmail, 1926, 16c Madrid-Manila Flight, violet overprint (C7)**, o.g., lightly hinged, fresh, particularly well centered for this notably difficult stamp, choice example, Very Fine, *only 300 overprinted in violet*, Ex-Gilbert, Fekete; with 1987 P.F. certificate. Scott \$2,800.
Estimate \$2,000 - 3,000
- 1616 ★ **Airmail, 1926, 16c Madrid-Manila Flight, red overprint (C8)**, tropicalized o.g., very rare stamp, typical centering, presentable example of always off-centered stamp; small stained spot at top, tiny thin (not mentioned on certificate), V.G.-Fine, Ex-Gilbert, Fekete; signed Sanabria, Bruggmann (W.B. Manila), with 1987 P.F. certificate. Scott \$5,000.
Estimate \$2,000 - 3,000
- 1617 ★ **Airmail, 1926, 2p Madrid-Manila Flight (C13)**, o.g., small hinge remnant, crisp, unusually large margins all around, marvelous example, Very Fine to Extremely Fine, *only 900 issued*. Scott \$500.
Estimate \$400 - 600
- 1618 ★ **Airmail, 1926, 4p Madrid-Manila Flight (C14)**, o.g., lightly hinged, deep rich color, large balanced margins, superior example of this difficult stamp, far better than most, Very Fine to Extremely Fine, *only 700 overprinted*. Scott \$800.
Estimate \$750 - 1,000
- 1619 ★ **Airmail, 1926, 10p Madrid-Manila Flight (C15)**, o.g., small hinge remnant, fresh, large margins, choice, Very Fine to Extremely Fine, *scarce only 500 issued*. Scott \$1,000.
Estimate \$800 - 1,200
- 1620 ★ **Airmail, 1926, 26c Madrid-Manila Flight (C16)**, o.g., hinged, attractive example of this rare and most difficult stamp; small thin spots, Fine appearance, *only 100 issued*, Ex-Fekete; signed L.W.C. Scott \$5,000.
Estimate \$2,000 - 3,000
- 1621 ★ **Airmail, 1926, 1p Madrid-Manila Flight (C17)**, o.g., lightly hinged, excellent example, large margins, rich color, Very Fine to Extremely Fine, *only 2000 issued*. Scott \$200.
Estimate \$150 - 200
- 1622 ★ **Airmail, 1944, 4c rose carmine, handstamped "VICTORY" (C63)**, straight edge with guideline at left, part o.g. (some interleaving adhering), rare and desirable stamp, bit better than usual centering; minor corner crease, Very Fine, *only 122 stamps were overprinted, 51 unused examples were recorded on Brewster census*; signed SUPERIOR LA, with 1951 P.F. certificate (as #C13?). Scott \$3,750.
Estimate \$2,500 - 3,000
- 1623 ★ **Special Delivery, 1901, 10c dark blue (E1)**, o.g., very lightly hinged, fresh and choice, large balanced margins, deep rich color, a marvelous example, Very Fine to Extremely Fine. Scott \$100.
Estimate \$100 - 150
- 1624 ★ **Special Delivery, 1907, 10c ultramarine, Bureau of Insular Affairs Special Printing (E2A)**, o.g., lightly hinged, exceptionally well centered large margins, amazing appearance, very scarce and sought after; reperforated at right, minor natural paper wrinkle, Extremely Fine to Superb appearance, *only 100 were printed*; with 1985 P.F. certificate. Scott \$3,250.
Estimate \$2,000 - 3,000
- 1625 ★ **Special Delivery, 1916, 20c deep ultramarine (E4)**, o.g., lightly hinged, large margins, fresh and attractive example, Very Fine. Scott \$175.
Estimate \$150 - 200
- 1626 ★ **Special Delivery, 1944, 20c dull violet, handstamped "VICTORY" (E8)**, tropicalized o.g. (interleaving adherence), one of the nicer examples of this very scarce stamp, reasonably well centered and fresh, Very Fine, *only 138 were overprinted and only 53 unused examples reported on Brewster census*; with 2007 P.F. certificate. Scott \$1,400.
Estimate \$1,000 - 1,500



1627



1628



Ex 1629



Ex 1630



1632



1631



1633



1634



1636



1637



1638



1639

1627 ★ Special Delivery, 1944, 20c blue violet, handstamped "VICTORY" (E9), sheet margin single with partial arrow at left, slightly tropicalized o.g., very fresh and attractive example, well centered with rich color, Very Fine, only 600 were issued and 100 unused examples were reported in the Brewster census. Scott \$550. Estimate \$400 - 600

1628 ✉ Special Delivery, 1944, 20c, handstamped "VICTORY" (E9, 471, 474, 479, J19 on U43/UPSS#121), used with 6c dark green, 10c carmine rose, 16c dark blue and 10c Postage Due on 2c carmine entire, all tied by "TACLOBAN, LEYTE/DEC 3/10AM/P.I." circular town cancels on entire addressed to HQ ASCOM A.P.O. 358 (Leyte). **First Day of Issue for Postage Due stamp, rare and astonishing combination franking, likely unique, even though philatelically inspired a fabulous cover in every respect; couple of inconsequential gum stains, an Extremely Fine cover; with 2003 A.P.S. certificate. Scott \$2,000 + as used singles. Estimate \$2,000 - 3,000**

- 1629 ★ Postage Dues, 1899-1901, 1¢-50¢ complete (J1-J7)**, o.g., hinged, vibrant color, particularly well centered for these, excellent set; 1¢ used with light pen cancel, mostly Very Fine or better. Scott \$562. Estimate \$350 - 500
- 1630 ★ Postage Dues, 1944, 4¢-30¢ complete, handstamped "VICTORY" (J16-J22)**, slightly tropicalized o.g. (16¢ unused), an superior set of these scarce Dues, selected for and uniformly bright and well centered, Very Fine or better, *between 306 and 425 of each issued*; J20 with 2007 P.F. certificate. Scott \$770. Estimate \$750 - 1,000
- 1631 ✉ Postage Due, 1944, 8¢ block of four, handstamped "VICTORY" (J18 block, 464 on U43)**, used with 2¢ apple green, pair, on 2¢ carmine entire, tied by "TACLOBAN, LEYTE/JAN 13/P.I." duplexes on entire, with censor's tape and handstamp, to Abuyog., marvelous combination franking including rare Postage Due block on entire, an incredible item even though philatelically inspired, an Extremely Fine cover, *exceptional and possibly unique combination*. Scott \$1,400 for four used dues alone. Estimate \$1,000 - 1,500
- 1632 ★ Postage Due, 1944, 12¢ brown red, handstamped "VICTORY" (J20)**, slightly tropicalized o.g., well centered example, scarce and desirable, Very Fine, *only 423 issued*. Scott \$100. Estimate \$100 - 150
- 1633 ★^a Official, 1944, 2¢ rose, handstamped "VICTORY" in violet (O38)**, block of 4, tropicalized o.g. (interleaving adherence), particularly well centered block, usual interleaving issue, scarce and attractive, Very Fine to Extremely Fine, *only 128 were overprinted*; with photocopy of 2003 A.P.S. certificate for larger block from which this came. Scott \$1,500. Estimate \$750 - 1,000
- 1634 ★^a Official, 1944, 4¢ yellow green, handstamped "VICTORY" in violet (O40)**, block of 4, tropicalized o.g. (interleaving adherence), bright and attractive, scarce multiple, F.-V.F. Scott \$180. Estimate \$150 - 200



- 1635 ★ Official, 1944, 6¢ dark brown, handstamped "VICTORY" in violet (O40A)**, slightly tropicalized o.g., an absolutely remarkable example of this exceedingly rare VICTORY, bright and crisp, very well centered, exceptional item, Very Fine to Extremely Fine, *Brewster, in his comprehensive census, estimates that 50 were issued and only 27 unused examples were reported*; with 2017 P.S.E. certificate. Scott \$8,000. Estimate \$7,500 - 10,000
- This is the Finest example of this Rare stamp that we've seen! Suitable for the most discriminating collector.*
- 1636 ★ Official, 1944, 20¢ light olive green, handstamped "VICTORY" in violet (O43)**, tropicalized o.g. (interleaving adherence), very scarce stamp, better than usual centering for this; some gum soakage on perforations as is typical for this issue, otherwise Very Fine, *Brewster's census records only 71 examples of O42 & O43 combined*; signed Bloch, with 1977 Friedl certificate. Scott \$1,750. Estimate \$1,000 - 1,500
- 1637 ★✉ Envelope, 1944, 2¢ carmine, two, and 4¢ olive green, "VICTORY" handstamps, entires (U43(2) and U45)**, 2¢ one with CC-1, other with MO-1, and 4¢ with CC-9, scarce and attractive unused entires, Very Fine to Extremely Fine, *only 379 of 4¢ issued*. Scott \$235. UPSS 121a, 121b and 125b; \$505. Estimate \$200 - 300
- 1638 ★ Postal Card, 1903, Liberty, 2¢ black (UX4)**, Scott type b / U.P.S.S. type 2 overprint, clean and excellent example of this very scarce card, Very Fine. Scott \$800. UPSS S4; \$800. Estimate \$500 - 750
- 1639 ★ Postal Card, 1944, 2¢ green on buff, "VICTORY" handstamp (UX20)**, scarce and desirable, a very clean card, Very Fine to Extremely Fine, *only 190 issued*. Scott \$225. UPSS S23; \$300. Estimate \$200 - 300



1640



1641



1646



1648



1650



1651




1652



1653


- 1640 ★ Postal Card, 1944, 2¢ green on buff, “VICTORY” handstamp (UX20)**, nice example of this very scarce card; soft corners, slight tropical discolorations, F.-V.F., *only 190 were overprinted*. Scott \$225. UPSS S23; \$300.
Estimate \$200 - 300
- 1641 ★ Official Postal Card, 1941, 2¢ light green, variety (UZ4 var.)**, short dividing line, sharp and attractive, very scarce variety, Very Fine to Extremely Fine. Scott \$160+. UPSS OS4a; \$275.
Estimate \$150 - 200
- 1642 ★/○ Postal stationery collection, 1899-1944 (U1/U42, UX1/UX15, UY1/UY2, UZ1/UZ4)**, comprehensive group of 138 items in overstuffed album, contains mint and used examples of many items, most identified by by UPSS number and includes some premium items (not counted in Scott value), strength is in U.S. overprinted issues and includes high values and recuts, nice group of postal cards as well, minor duplication, few non-stationery covers included but not counted, careful examination will be rewarded, generally above average condition though some tropical issues present, Very Fine overall. Scott \$4,500+ (photo on web site).
Estimate \$800 - 1,200
- 1643 ★ Remainder of extensive collection, 1901-46 (220//NO7)**, interesting accumulation on album pages and loose begins with a smattering of Spanish dominion stamps, a few remaining U.S. era including #220-221, 240, two 236 with “OB” handstamps, 274, and well filled from 1926 on highlighted by #319-325, 354-360, 383-396, 411-424, 485-496, C18-C62 complete, E2 (two), E3, E6, O1-O37 complete, Japanese Occupation complete, and numerous others including, booklet panes, revenues, etc., generally excellent condition including much never hinged, ripe for expansion or profitable break-down, overall Very Fine (photo on web site).
Estimate \$350 - 500
- 1644 ☒ Collection of stamps and covers, 1942-66, Japanese Occupation and Republic**, nice collection of Republic era stamps in album, appears complete and never hinged from 1946-68, stamps and souvenir sheets, and a shoe box full of a couple of hundred covers from the Japanese Occupation and Republic periods, commercial and first day covers, some duplication including 24 #N12-N25 first day covers, interesting lot, could form the basis for expansion or for breaking down, generally Very Fine (photo on web site).
Estimate \$200 - 300

- 1645**  **Postal history collection, 1898-1946, U.S. Administration of the Philippines**, group of almost 100 covers and cards comprising 17 U.S. or overprinted stamps on covers including seven with Military Station cancels, 30 assorted U.S. Administration covers and cards, 26 commonwealth and 25 pre-WW2 navals, small but diverse and interesting group, mixed condition, generally F.-V.F. (photo on web site). Estimate \$150 - 200

PUERTO RICO

- 1646** ★ **1898, 5¢ black, Coamo (201)**, Type II and III, position 1 and 6, vertical pair, large part o.g., excellent pair with four ample to large margins, includes scarce type III with fancy outlined "5" (two positions in ten), very desirable combination pair, Very Fine to Extremely Fine, *only about 500 were issued*; signed multiple times. Scott \$1,475 as singles. Estimate \$1,000 - 1,500
- 1647** (★) **1898, 5¢ black, Coamo (201)**, Type IV and II, position 8-9, horizontal pair, unused without gum, excellent pair with four large margins, includes scarcest type II (one position in ten), very desirable multiple; left stamp with small sealed tear at top, right stamp with tiny thin, otherwise Very Fine to Extremely Fine, *only about 500 were issued*; signed CAM, with 2007 P.F. certificate. Scott \$1,550 as singles. Estimate \$750 - 1,000
- 1648** ★ **Postage Due, 1899, 10¢ deep claret (J3, J3a)**, combination pair, 36 degree and 25 degree angles, o.g., hinge remnants re-inforcing slight separations, handsome and fresh, scarce and desirable pair, F.-V.F. Scott \$650. Estimate \$350 - 500
- 1649** ★ **Collection remainder, 1899-1900 (210//216, J1//J2, UX1)**, begins with a sparse group of Spanish era stamps not counted, followed by 1899 U.S. overprints complete plus pair of 1¢ (#210a) and 2¢ (#211a) at 25 degree angle, 1900 1¢-2¢ complete, two 1¢ dues both at 25 degrees (#J1a) and pair of 2¢ dues with both angles (#J2, J2a) and concludes with 1899 1¢ black postal card (#UX1), stamps are far nicer than normal including several never hinged, virtually all are exceptionally well centered for these, Choice Very Fine. Scott \$404 (photo on web site). Estimate \$150 - 200

RYUKYUS

- 1650** ★ **Miyako District, 1946, Postmaster Tomiyama's handstamped seal on 1s to 50s Provisional Issues (3X1//3X21)**, eighteen stamps, 3X1-3X2, 3X2a, 3X3-3X4, 3X6-3X13, 3X15, 3X17-3X18 and 3X20-3X21, about half with guarantee marks on reverse, tropicalized o.g. (most with interleaving adherence), generally bright and reasonably well centered for these, an appealing group, generally F.-V.F. or better. Scott \$1,030. Estimate \$500 - 750
- 1651** ★ **1948, 1st Issue, 1st printing, 1y ultramarine (7a)**, sheet margin single, slightly tropicalized o.g. hinged, scarce and attractive, almost perfectly centered, Extremely Fine; with 2003 P.F. certificate. Scott \$400. J.S.C.A. 7. Estimate \$200 - 300
- 1652** ★★ **1952, "Kai Tei" (revalued) surcharge on Shuri Castle, 100y on 2y rose violet (17)**, o.g., never hinged, deep rich color against bright white paper, well centered for this, fantastic example, Very Fine; with 1965 P.F. certificate. Scott \$2,000. J.S.C.A. 17. Estimate \$1,000 - 1,500
- 1653** ★★ **Airmail, 1959, 3rd Issue surcharged, 9¢ on 15y blue green, surcharge inverted (C14a)**, with split bars as usual, sheet margin single, o.g., never hinged, very scarce error, almost perfectly centered, highly sought after; slight tropical toning, otherwise Extremely Fine, *only two sheets of 50 were ever discovered*; with 1963 Nina S. Thomas letter of authenticity. Scott \$800. J.S.C.A. A14va. Estimate \$500 - 750
- 1654** ★/O **Postal stationery collection, 1948-72 (U1, UC1//UC4, UX1//UX44, UY2//UY17)**, overstuffed binder of over 200 specialized stationery items, mint, used and first day covers, notable include: mint UX1, UX2, UX4b (2), UX5, UX7, UY4I, UY9, excellent variety and condition, many postally used, Very Fine to Extremely Fine. Scott \$2,600 by owner (photo on web site). Estimate \$350 - 500
- 1655** ★★ **Collection, 1948-72, remainder on pages (1//228, C1-C30, E1, R1-R6)**, virtually complete collection except missing #2, 4, 6, 7a and 17 with several additional values and a few miscellaneous extra items, o.g., most never hinged, select for condition, many better individual items, Very Fine to Extremely Fine (photo on web site). Estimate \$200 - 300

U.S. POSSESSIONS

- 1656 ★** **Collection remainder, 1873-1978**, small assortment of items from the Campbell collection, begins with a moderately well filled possessions collection on Scott pages Canal Zone earlies mixed mint and used, later well filled mint, Cuba missing only 226A, D.W.I. sparse earlies, well filled from #31 on, Guam with a few Guard Mails, a smattering of Hawaii, a nice mix of Philippines and Japanese Occupation and used Puerto Rico; a second Scott album has only a sparse mix of mostly inexpensive stamps; followed by a small batch of loose stamps including a few nice item, and a decent group of Canal Zone booklets and blocks; and a small binder containing 15 sheets and a couple of large blocks, nothing too exciting but could provide a very nice beginning to a possessions collection or some useful individual items for stock or collection, mixed condition, generally F.-V.F. (photo on web site). Estimate \$500 - 750

Please Visit Our Web Site

www.kelleherauctions.com

You can view images of every lot, bid directly online - and search for what you're looking for.

CONDITIONS OF SALE - Public Auction

THE PLACING OF A BID SHALL CONSTITUTE ACCEPTANCE OF THESE CONDITIONS OF SALE BETWEEN BIDDER AND DANIEL F. KELLEHER AUCTIONS, LLC ("KELLEHER")

BIDDING

1. Unless announced otherwise by the auctioneer, all bids are per lot, as numbered in the printed Catalogue. Kelleher, as agent for the consignor or vendor, shall regulate the bidding and shall determine the manner in which the bidding shall be conducted. Kelleher reserves the right to withdraw any lot prior to sale (without liability to any potential purchaser or agent), to re-offer any withdrawn lot, to divide a lot or to group two or more lots belonging to the same consignor or vendor, and to refuse any bid believed not made in good faith. Estimates of sales prices contained in the printed Catalogue reflect the best judgment of Kelleher and are not minimum or upset prices.

2. (a) Bids shall be made in the steps set forth on the bidding page (ii). (b) The highest bid acknowledged by the auctioneer shall prevail. Should a dispute arise between bidders (including a dispute between a floor or internet bidder and the auctioneer acting on behalf of a mail bidder, consignor or vendor), the auctioneer alone shall determine who the successful bidder is and whether to reoffer the lot in dispute. Should a dispute arise after the sale, the auctioneer's sale records shall be conclusive. On all lots sold, a commission of **20% *** on the hammer price is payable by the buyer to the auctioneer together with any sales and use tax or customs duties.

3. (a) The auctioneer reserves the right to bid on behalf of clients (and consignors or vendors) but shall not be liable for errors and omissions in executing instructions to bid, however received, and whether such errors or omissions be those of the bidder or agent or those of the auctioneer.

(b) Lots are offered subject to a reserve price. The auctioneer will implement such reserve price by bidding on behalf of the consignor vendor. (c) It may also be assumed that all consignors have been advanced monies against the sale of their consigned material and Kelleher therefore has a security interest in the consigned material over and above the normal auction commission.

(d) Purchases made by a consignor or vendor or his agent on his own lots shall be considered as a sale subject to commissions and sales tax as applicable.

(e) Agents are responsible for the payment of the purchase price for all purchases made on behalf of their clients, unless other arrangements with the auctioneer have been confirmed in writing prior to the auction.

PAYMENT FOR PURCHASES

4. (a) Payment for lots, including those on which opinions are desired (Condition of Sale), shall be as follows:

(b) Floor Bidders. Payment of the purchase price, or such part thereof as Kelleher shall require, shall be made by the purchaser in cash or bank or certified check or in such other manner as Kelleher may determine. The name and address of the purchaser of each lot shall be given to the auctioneer immediately following the sale of such lot.

(c) Mail Bidders. A successful mail bidder will be notified of lots purchased. Before Kelleher will send such lots, payment in full must be received by Kelleher within three (3) business days of receipt of the aforesaid notification by the mail bidder. However, a purchaser known to Kelleher at its option may have purchases delivered or forwarded for immediate payment (by a dollar draft on a U.S. bank in the case of overseas purchasers). Mailed delivery will be to the address on the bid sheet and proof by Kelleher of receipt of a sending at the advised address shall constitute delivery. All charges for handling, delivery and insurance obtained by Kelleher on behalf of the purchaser shall be added to the purchase price; a minimum charge of \$20.00 will be made.

(d) **Prompt Payment Discount** - Successful bidders whose payment is received within 15 calendar days from the date of the auction, shall be entitled to a 2% prompt payment discount of the hammer price of each lot, regardless of the method of payment.

5. Title shall not pass to the purchaser until full payment has been received by Kelleher as agents for the consignor or vendor.

6. (a) Purchasers agree to pay for lots as specified in Condition of Sale 4 (or as the same may be modified by Condition of Sale 8), and no credit is extended; a late payment charge of 2% per month or fraction thereof shall be added if payment is not made in accordance with the aforesaid conditions.

(b) In the event that a bidder shall fail to comply with these Conditions of Sale ("Non-Complying Bidder"), then, as to any lot with respect to which such failure to comply occurs, Kelleher, may, in its sole discretion, re-offer such lot during the same auction or at an auction at a later time, or by private treaty at such time as Kelleher Auctions, in its sole discretion, deems appropriate and the Non-Complying Bidder shall be liable for the deficiency, if any, between the hammer price and the net proceeds of a sale to a subsequent purchaser, whether at auction or by private treaty, as well as for all costs and expenses of both sales, all other charges due thereunder, including commissions with respect to both sales, whether payable to Kelleher or to a third party and all incidental damages. It shall be in Kelleher's sole discretion to determine whether to re-offer the lot theretofore hammered-down to a Non-Complying Bidder at the same auction, or by private treaty in due course, or at a subsequent auction conducted by Kelleher. In no event shall any surplus arising from the sale of a re-offered lot be payable to a Non-Complying Bidder.

(c) A defaulting purchaser shall be deemed to have granted Kelleher a security interest in property in Kelleher's possession owned by such purchaser. Kelleher shall have all of the rights afforded a purchase money secured party under the Connecticut or Massachusetts Uniform Commercial Code with respect to such property and may apply against such obligations all monies held or received by it for the account of, or due from Kelleher to such purchaser. Kelleher is authorized to file a Financing Statement in order to perfect its rights as a secured party.

(d) If Kelleher takes any legal steps to secure payment of a delinquent account, the defaulting purchaser shall be liable for all legal and other expenses incurred by Kelleher to secure such payment, including but not limited to a reasonable allowance for attorneys' fees. For purposes of this paragraph, the term legal steps shall be deemed to include any and all consultation by Kelleher with its attorneys with respect to all matters arising out of a delinquent account.

(e) Unless otherwise acceptable to Kelleher, payment is to be made only in the form of cash, bank check or certified check, personal check (which must clear prior to delivery of lots), credit card (AMEX, Visa, MasterCard and Discover), PayPal or a bank wire transfer. Payments made by credit card are accepted as a courtesy without surcharge, if paid within 15 days of sale date.

WIRING INSTRUCTIONS:

Please contact us for our wiring instructions.

EXHIBITION AND INSPECTION OF LOTS; QUALITY AND AUTHENTICITY

7. (a) See viewing schedule for on-premises viewing. Ample opportunity is given for on premises inspection prior to the auction date, and, upon written request and at Kelleher discretion. Live video viewing is also available, please contact our offices to arrange same.

(b) Each lot is sold as genuine and correctly described, based on individual description as modified by any specific notations in this Catalogue.

(c) Quality. Any lot which a purchaser considers to be incorrectly described may be returned to Kelleher within two weeks of its receipt by such purchaser ("Returning Purchaser"), provided, however, that the same is received by Kelleher within four weeks of the date of the auction; however, Kelleher may, in its discretion, refuse acceptance of such returned lot. If an opinion of a mutually acceptable authority is desired, the period of time within which a lot must be received by Kelleher will be extended in accordance with Condition of Sale 7(g). In the event that a dispute cannot be resolved by reference to a mutually acceptable authority, and Kelleher thereupon undertakes to re-offer the lot with a description identical to the description disputed, the Returning Purchaser shall be liable for the deficiency, if any, between the proceeds of the sale to the Returning Purchaser and the proceeds of a sale to a subsequent purchaser, as well as for all costs and expenses of the re-sale, including commission, and all incidental damages. Any lot, the description of which is disputed, must be returned intact and in the original packaging and in the condition received (unaltered) by the purchaser. The following lots are not returnable except at the discretion of Kelleher: (i) lots from purchasers who attended the exhibition of the lots; (ii) lots examined by postal viewers; (iii) lots on account of their appearance, if they are illustrated in this Catalogue or online; or (iv) lots described as having repairs, defects or faults for any reason. (v) lots containing more than ten (10) items. (d) Authenticity. Any lot which is declared otherwise than genuine by a mutually recognized authority is returnable, provided such lot is received by Kelleher within four weeks of the date of the auction. Proof that a mutually acceptable authority declines to express an opinion is not grounds for the return of a lot.

(e) Expenses incurred a purchaser in the submission and the return of a lot under Conditions of Sale 7 is not subject to refund.

(f) Numerical grading is subjective and is based upon the condition of each issue. Lots may not be returned if a third party grades a stamp at lower than our grade.

(g) Lots with existing certificates from the Philatelic Foundation (PF) or Professional Stamp Experts (PSE), British Philatelic Association (BPA), Royal Philatelic Society (London) (RPSL) and Australia (RPSA), Vincent Graves Greene Foundation (VGG) or any other expertizing authority as recognized by the International Association of Philatelic Experts (AIEP), for items within their specialty and dated within the last seven (7) years from the date of sale, will be offered and sold on an "as-is" basis and as so stated on the certificate. Such lots may not be returned for any reason, including but not limited to a contrary verbal or written opinion or certificate.

SALES TAX/CUSTOMS DUTIES

8. Unless presentation of satisfactory proof that it is exempted by law, a purchaser shall pay to Kelleher the Connecticut, Massachusetts or any compensating use taxes of any other State claiming jurisdiction. Buyers outside the U.S. are responsible for all customs duties. A purchaser shall indemnify Kelleher and hold it harmless of and from any claims of any jurisdiction for sales taxes relating to the purchase of articles at the auction, whenever the same may arise.

APPLICABLE LAW, JURISDICTION, ETC.

9. All matters arising out of this auction shall be governed by the laws of the State of Connecticut without giving effect to the choice of law principles thereof.

ARBITRATION

10. Any controversy or claim arising out of or relating to this auction shall be settled by arbitration in the City of New York, State of New York in accordance with the Rules of the American Arbitration Association and judgment upon the award rendered by the Arbitrator or Arbitrators may be entered in any Court having jurisdiction.

JURISDICTION AND VENUE OF ACTIONS

11. The purchaser at this auction (a) consents and submits to the jurisdiction of the Courts of the State of Connecticut and of the Courts of the United States for a judicial district within the territorial limits of the State of Connecticut for all matters arising out of this auction sale, including, without limitation, any action or proceeding instituted for the enforcement of any right, remedy, obligation and liability arising under or by reason thereof; and (b) consents and submits to the venue of such action or proceeding in the City of Danbury, County of Fairfield, State of Connecticut (or such judicial district of a Court of the United States as shall include the same, and (c) further consents that service of process in any action relating thereto may be effected by registered mail, return receipt requested address to the purchase at the address given to the auctioneer at the time of the sale.

BIDDING STEPS

12. Bidding Steps are as published on page (ii); bids made out of increment will be reduced to the next increment. Example: \$603 bid will be reduced to \$600, etc.

BIDS BY TELEPHONE

(a) Must be confirmed in writing unless waived by the auctioneer.

(b) Any errors are the responsibility of the bidder.

(c) No bids accepted less than 1 hour before the commencement of the sale.

BIDS BY FAX OR EMAIL

Bids must be received 1 hour before sale commences — be sure to use

FAX: (203) 297-6059 or EMAIL: bids@kelleherauctions.com

PHONE BIDDING DURING THE SALE

Phone bidding space is limited and available on a first come, first served basis. The importance of reserving early cannot be overstated!

Please call us at (203) 830.2500 to reserve your phone bidding space

STAMP AUCTION NETWORK (SAN) Live internet bidding. To bid, you must be registered and be approved by both Stamp Auction Network and Kelleher. Please contact us for further instructions or go to www.stampauctionnetwork.com and find the Kelleher link.

WHAT EVERYONE SHOULD KNOW

CANAL STATISTICS.

Length of Canal 50½ Miles.

Culebra Cut Depth 300 Feet.

Locks in Pairs 12

Locks Usable Length 1000 Feet

" " Width 110 "

Excavation Estimated Total 174,666,596 CY.

" By French Useful 29,908,000 CY.

Concrete Total Estimate 5,000,000 CY.

Time Of Transit Through Canal 10½-12 Hours.

" Passage " Locks 3 "

Canal Force Actually At Work 39,000

Canal Co Formed By The French 1879.

" Work Begun - " " 1881.

Eight Years Work - " " Cost \$300,000,000.

Work Begun By U.S. May 4 1904.

U.S. Paid French Canal Co \$40,000,000.

U.S. " Republic of Panama \$10,000,000.

Cost of Canal Total Over \$375,000,000.

Date of Completion Jan 1st 1915.

Shortening of Route N.Y. to S.F. 8415 M

A Yearly Saving of Millions
to the Shipping World.



Daniel F. Kelleher Auctions LLC

America's Oldest Philatelic Auction House, Established 1885

22 SHELTER ROCK LANE, UNIT 53 DANBURY, CT 06810, USA

TEL: 203.830.2500 • FAX: 203.297.6059 • KELLEHERAUCTIONS.COM

The Only American Philatelic Auction House with Offices on Three Continents

Hong Kong • London • USA

© Copyright 2020