

# KELLEHER AUCTIONS<sup>LLC</sup>



## THE DANIEL METLAY *Collection of Quality United States*



October 14, 2025  
DANBURY, CT • SALE 822



# KELLEHER AUCTIONS LLS

## Established 1885 *Celebrating 140 Years!*



### Now Featuring Coins, Paper Money, Sports Cards, Memorabilia and Autographs



### And of course, Stamps & Covers!



**David M. Coogle**  
Co-Chairman

**Laurence Gibson**  
Co-Chairman



## CONTACT US TO CONSIGN - SELL - OR BUY



**Eric Roth**  
VP Consignments  
and Collections  
203.830.2500 ext 500  
Eroth@KelleherAuctions.com



**Bob Prager**  
Director of Client Relations  
203.830.2500 ext 501  
bprager@KelleherAuctions.com

22 Shelter Rock Lane • Unit 53 • Danbury, CT 06810  
Phone: +203.830.2500 • Toll Free 800.212.2830 • Fax: +203.297.6059



[www.kelleherauctions.com](http://www.kelleherauctions.com)

# Kelleher Auctions, LLC

## Sale No. 822 - Public Auction Sale

To be held at our office:

22 Shelter Rock Lane, Unit 53, Danbury, Connecticut 06810

## THE DANIEL METLAY SALE OF QUALITY UNITED STATES STAMPS



**October 14, 2025**

**Tuesday, October 14, 2025 - 12:00 Noon**  
Lots 1001 - 1232

### **Join Our 140th Year Celebration with a Special Referral Program!**

We're excited to announce a special referral program in honor of our 140th anniversary. Refer a consignor to us, and if they use our services for a collection valued over \$5,000, you'll receive a \$140 Amazon gift card as a token of our appreciation!

LIMITED ON-SITE VIEWING BY APPOINTMENT ONLY

**KELLEHER AUCTIONS, LLC**  
STAMPS | COINS | SPORTS CARDS | MEMORABILIA



Tel: 203.830.2500 Fax: 203.297.6059  
KelleherAuctions.com





# KELLEHER AUCTIONS, LLC

STAMPS | COINS | SPORTS CARDS | MEMORABILIA

22 Shelter Rock Lane, Unit 53, Danbury CT 06810  
800.212.2830 • 203.830.2500 Tel • 203.297.6059 Fax



**David Coogle**  
CO-CHAIRMAN  
dcoogle@  
kelleherauctions.com



**Larry Gibson**  
CO-CHAIRMAN  
lgibson@  
kelleherauctions.com



**David Barber**  
CHIEF OPERATING OFFICER  
dbarber@  
kelleherauctions.com



**Richard LaSalle**  
PRODUCTION MANAGER  
rlasalle@  
kelleherauctions.com



**Eric Roth**  
VP COLLECTIONS &  
CONSIGNMENTS  
eroth@  
kelleherauctions.com



**Lindsey Zaleski**  
AUCTION MANAGER  
lzaleski@  
kelleherauctions.com



**Les Boisclair**  
EXPERT DESCRIBER



**Esther Depelteau**  
ACCOUNTING



**Bob Prager**  
DIR CLIENT RELATION  
bprager@  
kelleherauctions.com



**Hugh Galford**  
SENIOR DESCRIBER  
hgalford@  
kelleherauctions.com



**Darren Prager**  
COLLECTABLES  
MANAGER  
dprager@  
kelleherauctions.com



**Bin Gu**  
EXECUTIVE ASSIST. TO  
AUCTION DEPT.  
bgu@  
kelleherauctions.com



**Jesse Coachman**  
SHIPPING-FULFILLMENT  
MANAGER  
jcoachman@  
kelleherauctions.com



**Max Wender**  
CONSIGNMENT  
MANAGER  
mwender@  
kelleherauctions.com



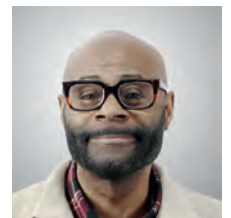
**Philip Koro**  
DESCRIBER



**Francis O'Reilly**  
ACCOUNTING  
foreilly@  
kelleherauctions.com



**Mary O'Hanlon**  
Administrative Assistant  
info@  
kelleherauctions.com



**James Mccray**  
SHIPPING-FULFILLMENT  
SPECIALIST  
shipping@  
kelleherauctions.com



**Raymond Corriea**  
IMAGING



**Diante Campbell**  
IMAGING



**Betsy Klein**  
IMAGING



**Roger Chia**  
SHIPPING-FULFILLMENT  
MANAGER  
rchia@  
kelleherauctions.com



# Bidders Information

Bid Live  
www.stampauctionnetwork.com  
For Phone Bidding call us at 203.830.2500

## Bidding Increments:

Bidding shall proceed in accordance with the following schedule:

Up to \$200; increase by \$10	Over \$7,500 to \$15,000; increase by \$500
Over \$200 to \$500; increase by \$25	Over \$15,000 to \$30,000; increase by \$1,000
Over \$500 to \$1,000; increase by \$50	Over \$30,000 to \$70,000; increase by \$2,500
Over \$1,000 to \$3,000; increase by \$100	Over \$70,000 to \$130,000; increase by \$5,000
Over \$3,000 to \$7,500; increase by \$250	Over \$130,000 at discretion of auctioneer.

## Symbols Used

★★	Mint Never Hinged	☒	Cover	NYFM	New York Foreign Mail
★	Mint with Gum	○	Used	TC	Trial Color Proof
(★)	Unused, No Gum/Regummed	S	Specimen	SL	Straight Line
R	Reprint	E	Essay	MS	Manuscript
P	Proof	▲	Piece		
o.g.	Original gum	▣	Block		

Gum Categories:	MINT N.H.	ORIGINAL GUM (O.G.)				NO GUM
						
	Mint Never Hinged Free from any disturbance	Lightly Hinged Faint impression of a removed hinge over a small area	Hinge Mark or Remnant Prominent hinged spot; may have part or all of the hinge remaining	Large part o.g. Approximately half or more of the gum intact	Small part o.g. Approximately less than half of the gum intact	No gum Only if issued with gum
Commonly Used Symbol:	★★	★	★	★	★	(★)

Table from the *Scott Specialized Catalogue of United States Stamps & Covers*, ©2020 Amos Media

## Grading and Condition

<b>Superb</b>	Extraordinary item in the finest condition.
<b>Extremely Fine (XF)</b>	A stamp or cover of outstanding and exceptional quality.
<b>Very Fine (VF)</b>	Scott Catalog's standard. Stamps will present a nice, balanced appearance. Covers appear new or show only minimal wear.
<b>Fine-Very Fine (F-VF)</b>	Stamp and/or covers are sound. Stamps are fully margined but noticeably off-center. Covers show normal travel wear.
<b>Fine (F)</b>	Sound in all aspects. Perforated stamps will have the perforations clear of the design; imperforate stamps will not be cut into to any significant degree. Covers show extensive wear.
<b>Very Good (VG)</b>	Stamps with imperfect centering, stamps or covers with poor general appearance.

### Covers

Minor imperfections are normal for 19th-century envelopes that have been postally transmitted. These include, but are not limited to, nicks, edge or flap tears, or slight reductions; folded letters will often have at least one file fold. Further, covers may have an ordinary stamp with a minor defect. Acceptable forms of conservation include light cleaning and edge mending. These conditions, even if not described, are not grounds for return.

### Catalog Values

Unless otherwise noted, the currently available (2025 edition) Scott Catalogue values are quoted in U.S. dollars and rounded to the nearest dollar. Other catalogues are often used for foreign countries or specialized areas as required.

### Collection Lots

Please note that **all** collection lots are sold on an "as-is" basis and therefore **not returnable for any reason**. Every attempt has been made to provide an accurate description, and extensive imaging is available on our website. Most collection lots will contain stamps and/or covers with varying imperfections or faults. We strongly suggest that all lots of interest be viewed in advance of the sale.

*Please note that late payment for purchases may, at Daniel F. Kelleher's option, be considered just cause to revoke all return privileges.*

## Featured Biography



### Daniel Metlay

Daniel Metlay is now an independent researcher in the field of nuclear waste management. He graduated in 1967 with a double major in molecular biology and medieval history. He later completed the Ph.D. program for political science. Dr. Metlay taught organization theory and public policy at Indiana University and MIT. Later on, he worked at high-level positions in the federal government. He retired in 2018 after a quarter-century career. Over the years, Dr. Metlay published over 100 articles, technical reports, presentations, and government documents.

He just submitted to his publisher a book-length manuscript on nuclear waste management policymaking.

Dr. Metlay is married, has two sons, and two grandchildren. He currently lives in Bethesda, Maryland. His other hobbies include photography and model railroading.

### Stamp Collecting History

I started collecting stamps at five years old when I lived in New York City. One of my uncles managed a post office. From time to time, he would give me autographed plate blocks. I also collected a smattering of foreign stamps. By the time I left New York at the age of ten, I had mostly stopped collecting stamps, although I still have my first album from those early days.

It was not until I began earning a living in the late 1970s that I could afford to begin my stamp collecting again. I was advised to buy only the best stamps that I could afford, advice I did not always follow. I am now putting up for auction my collection of early U.S. stamps. (Other important U.S., plate number coils, United Nations, and Israel stamps will follow.) This wonderful hobby has provided me with a half-century of enjoyment and education; I hope someone will find as much pleasure and excitement now that I pass on these items to others.

Kelleher website featuring these sections:  
**Read Auction Rules for sale types**



CLICK ON A COMPANY LOGO BELOW TO SEE THE FULL CONDITIONS OF SALE FOR EACH DIVISION.

*Daniel F. Kelleher Auctions, Inc.*

**Weekly Online Sales**  
Starting February 2020

*Kelleher & Rogers*  
True Value Auctions



## Live Bidding - at Home From Your Computer!

Participate comfortably in Daniel F. Kelleher Auctions from your home or office - Live on the Internet. You hear the auctioneer, you see the current lots, you can bid in real time; it is fast, easy and comfortable.

**BID LIVE AT STAMP AUCTION NETWORK AT NO CHARGE  
AFTER REGISTERING WITH KELLEHER AUCTIONS**  
<https://www.kelleherauctions.com/how-to-bid/>

What do I need to do to be able to bid in this sale LIVE at StampAuctionNetwork?

For clients already registered with Both Kelleher and SAN

Log into StampAuctionNetwork <http://stampauctionnetwork.com/LoginNew.cfm>

I am a Current SAN client but not registered with Kelleher

Update your registration page after logging in at: [http://stampauctionnetwork.com/Edit\\_ureg.cfm](http://stampauctionnetwork.com/Edit_ureg.cfm), select Kelleher from the choices underlined and press the **Update Registration** button to submit. This will send your request to the Kelleher Team for approval.

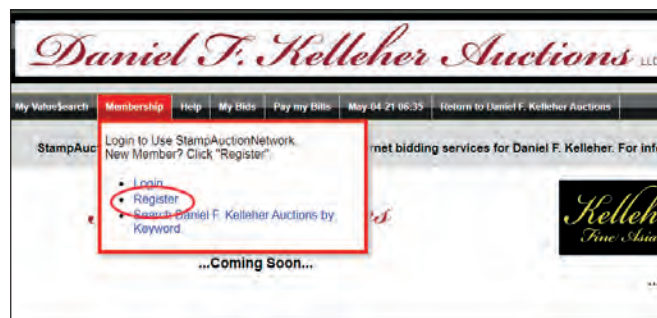
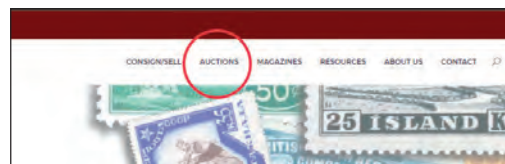
I am Currently a Kelleher Client but am NOT registered with Stamp Auction Network

You will have received an invitation to join Kelleher at SAN with a temporary username and password.  
Follow the instructions or contact Kelleher.

I am a new client to Kelleher and SAN

Go to: [www.kelleherauctions.com](http://www.kelleherauctions.com) and select "AUCTIONS" from the main menu.

Under "MEMBERSHIP" select "REGISTER" complete the form (red highlighted areas mandatory) agree to the terms of sale and submit registration. A Kelleher team member will review and approve or ask for additional information.



### PLEASE NOTE:

Bidder approval in advance of the sale is required



## Table of Contents

## Session 1, October 14, 2025

## United States

1851 Issue.....	1001-1002
1857 Issue.....	1003-1006
1867 Grilled Issue.....	1007-1008
1873 CNBC Issue, white wove.....	1009-1010
1879 ABNC Issue, soft paper.....	1011-1013
1881-1882 ABNC Issue, re-engraved.....	1014-1017
1887 ABNC Issue.....	1018-1023
1890-1893 Small Bank Notes Issue .....	1024-1033
1893 Columbian Issue.....	1034-1047
1894 First Bureau Issue, Unwatermarked.....	1048-1062
1895 First Bureau Issue, Watermarked .....	1063-1072
1898 First Bureau Issue, UPU colors.....	1073-1077
1898 Trans-Mississippi Issue.....	1078-1083
1901 Pan-American Issue .....	1084-1087
1902-1908 Second Bureau Issue.....	1088-1100
1904 Louisiana Purchase Issue .....	1101-1103
1907 Jamestown Issue.....	1104-1106
1908-1909 WF Issue, DL wmk, perf 12 .....	1107-1114
1908-1909 WF Issue, DL wmk, imperf .....	1115
1908-1910 WF Issue, DL wmk, perf 12 coils.....	1116-1124
1909 WF Issue, Bluish Paper.....	1125-1126
1909 Commemorative Issues.....	1127-1129
1910-1911 WF Issue, SL wmk, perf 12 .....	1130-1136
1910-1911 WF Issue, SL wmk, perf 12 coils.....	1137-1139

1910-1913 WF Issue, SL wmk, perf 8½ coils.....	1140-1151
1913-1915 Panama-Pacific Issue.....	1152-1155
1912-1914 WF Issue, SL wmk, perf 12 .....	1156
1912 WF Issue, SL wmk, perf 8½ coils .....	1157-1160
1912-1914 WF Issue, SL wmk, perf 12 .....	1161-1166
1912 WF Issue, DL wmk, perf 12.....	1167-1168
1913-1915 WF Issue, SL wmk, perf 10 .....	1169-1177
1914 WF Issue, SL wmk, perf 10 coils.....	1178-1183
1914-1916 WF Issue, SL wmk, prf 10 rot coil....	1184-1190
1914 WF Issue, SL wmk, imperf, rotary coil .....	1191-1192
1915 WF Issue, DL wmk, perf 10.....	1193
1915 WF Issue, SL wmk, perf 11.....	1194
1916-1917 WF Issue, flat plate, unwmk, perf 10	1195-1207
1916-1922 WF Iss, rot plt, unwmk, prf 10 coil ..	1208-1212
1917-1919 WF Issue, flat plate, unwmk, perf 11	1213-1216
1917 WF Issue, flat plate, DL wmk, perf 11 .....	1217
1918 WF Issue, flat plate, perf 11 .....	1218-1219
1918-1920 WF Issue, offset, perf 11 .....	1220
1918-1920 WF Issue, offset, imperf .....	1221-1222
1921 WF Issue, rotary coil waste, perf 11 .....	1223-1224
1920 WF Issue, flat plate, perf 11 .....	1225
1922-1929 Fourth Bureau Issue .....	1226-1227
1925-1929 Issues .....	1228
1938-Present Issues .....	1229-1231
Airmail .....	1232

Kelleher website featuring these sections:  
**[View and download all past catalogs](#)**



**Subscribe and view our current and past quarterly magazines**







## Session 1

Sale 822

Tuesday, October 14, 2025

Beginning at 12 Noon

At our offices in Danbury, CT

Lots 1001-1232



1001

## UNITED STATES 1851 ISSUE

- 1001 ★ 1851, 1¢ blue, type II (Scott 7), exceptionally wide borders, Very Fine, with 2018 P.S.E. certificate graded VF 80. SMQ VF 80; \$1,000. Estimate \$750 - 1,000

- 1002 ★ 1851, 3¢ orange brown, type II (Scott 10A), mathematically precise margins, o.g., previously hinged, Very Fine, with 2015 P.S.E. certificate graded VF 80 and photocopy of 2014 P.F. certificate. SMQ VF 80; \$3,250. Estimate \$2,500 - 3,500



1002



1003

## 1857 ISSUE

- 1003 ★★ 1857, 1¢ blue, type V (Scott 24), original unspoiled condition, o.g., never hinged, Very Fine to Extremely Fine, with 2018 P.S.E. certificate graded VF-XF 85. SMQ VF-XF 85; \$675. Estimate \$500 - 750

- 1004 ★★ 1857, 3¢ dull red, type III (Scott 26), wide, eye-catching borders, o.g., never hinged, Very Fine to Extremely Fine, with 2013 P.S.E. certificate graded VF-XF 85. SMQ VF-XF 85; \$350. Estimate \$300 - 400



1004





1005

1005 ★

1861, 5¢ orange brown, type II (Scott 30), pristine mint appearance, o.g., previously hinged, Very Fine to Extremely Fine, with 2016 P.F. certificate graded VF-XF 85. SMQ VF-XF 85; \$2,000. Estimate \$1,500 - 2,000

1006 ★

1860, 24¢ gray lilac (Scott 37), perfectly aligned borders, o.g., previously hinged, Extremely Fine, with 2009 P.S.E. certificate graded XF 90. SMQ XF 90; \$3,250. Estimate \$2,500 - 3,500



1006

Kelleher website featuring these sections:  
**Learn about getting your free appraisal**



#### FREE APPRAISALS

We will provide you with a no obligations, verbal valuation provided that you can answer some questions and provide the necessary information to assist us with same.

This may include providing us with images or inventories, insurance valuations, an on-site or in-office visit.

Fields marked with an \* are required

First Name \*

Last Name \*

Email \*

**Visit our Frequently Asked Question section:**

*Daniel F. Kelleher Auctions, LLC*

[CONSIGN/SELL](#) [AUCTIONS](#) [MAGAZINES](#) [RESOURCES](#) [ABOUT US](#) [CONTACT](#)





## 1867 GRILLED ISSUE



1007

- 1007 ★ 1867, 3¢ red, F. grill (Scott 94), o.g., lightly hinged, wonderful rich color and a sharp proof-like impression on bright white paper with even perfs all around, perfectly centered within exceptionally wide even margins, Superb. ***This phenomenal Superb 98 Jumbo stamp is the only and highest graded original gum example of the 3¢ F. grill. The next highest grade for o.g. is 95, ex-Klimetz, with 2021 P.S.E. graded SUP 98 J and 1988 P.F. certificates. SMQ SUP 98J; \$6,500. Scott \$350. Estimate \$6,000 - 8,000***

(photo on front cover)



1008

1008 ★

1867, 3¢ red, F. grill (Scott 94), crisp sharp printing, huge jumbo margins, o.g., previously hinged, Very Fine to Extremely Fine.. Scott \$350. Estimate \$500 - 750

### 1873 CONTINENTAL BANK NOTE CO. ISSUE, WHITE WOVE

1009 ★

1873, 6¢ dull pink, C.B.N.C. printing (Scott 159), brilliant color strength, o.g., previously hinged, Extremely Fine, with 2006 P.S.E. certificate graded XF 90 and 2000 P.F. certificate. SMQ XF 90; \$925. Estimate \$750 - 1,000



1009



1010

1010 ★

1873, 90¢ rose carmine, C.B.N.C. printing (Scott 166), clean, bright paper tone, o.g., previously hinged, Very Fine to Extremely Fine, with 2018 P.F. certificate graded VF-XF 85 and 1987 P.F. certificate. SMQ VF-XF 85; \$3,150. Estimate \$2,500 - 3,500

### 1879 AMERICAN BANK NOTE CO. ISSUE, SOFT PAPER

1011 ★★

1879, 3¢ green, A.B.N.C. printing (Scott 184), spotless, newly issued look, o.g., never hinged, Very Fine to Extremely Fine, with 2017 P.S.A.G. certificate graded VF-XF 85. SMQ VF-XF 85; \$525. Estimate \$400 - 600



1011





1012

1012 ★

1879, 6¢ pink, A.B.N.C. printing (Scott 186), well-struck balanced example, o.g., previously hinged, Extremely Fine, with 2005 P.S.E. certificate graded XF 90J and 2003 P.F. certificate. SMQ XF 90J; \$2,250. Estimate \$2,000 - 3,000

1013 ★★

1879, 15¢ red orange, A.B.N.C. printing (Scott 189), well-kept fresh example, o.g., never hinged, Extremely Fine, with 2017 P.S.E. certificate graded XF 90. SMQ XF 90; \$1,750. Estimate \$1,500 - 2,000



1013

Kelleher website featuring these sections:  
**Read Auction Rules for sale types**



CLICK ON A COMPANY LOGO BELOW TO SEE THE FULL CONDITIONS OF SALE FOR EACH DIVISION.

*Daniel F. Kelleher Auctions, Inc.*

Weekly Online Sales  
Various Auction Methods

*Kelleher & Rogers*  
Fine Art Auctions

1881-1882 AMERICAN BANK NOTE CO. ISSUE, RE-ENGRAVED



1014

1014 ★★

1882, 5¢ yellow brown (Scott 205), well-balanced jumbo margins, o.g., never hinged, Extremely Fine to Superb, with 2021 P.S.E. and 2020 Crowe certificates, each graded XF-SUP 95J. SMQ XF-SUP 95J; \$9,750. Estimate \$10,000 - 12,000

(photo on front cover)



1015

1015 ★★

1881, 1¢ gray blue, re-engraved (Scott 206), well-centered throughout, o.g., never hinged, Extremely Fine to Superb, with 2021 P.S.E. certificate graded XF-SUP 95. SMQ XF-SUP 95; \$2,000. Estimate \$2,000 - 3,000

1016 ★

1881, 3¢ blue green, re-engraved (Scott 207), uniform border spacing, o.g., previously hinged, Extremely Fine, with 2010 P.F. certificate graded XF 90 XQ. SMQ XF 90 XQ; \$175. Estimate \$150 - 200



1016



1017

1017 ★★

1883, 2¢ red brown (Scott 210), excellent design placement, o.g., never hinged, Extremely Fine, with 2018 P.F. certificate graded XF 90. SMQ XF 90; \$475. Estimate \$350 - 500

## 1887 AMERICAN BANK NOTE CO. ISSUE

1018 ★★

1887, 1¢ ultramarine (Scott 212), perfectly fresh appearance, o.g., never hinged, Extremely Fine to Superb, with 2005 P.S.E. certificate graded XF-SUP 95 and 1997 P.F. certificate. SMQ XF-SUP 95; \$2,500. Estimate \$2,000 - 3,000



1018





1019

1019 ★★

1887, 2¢ green (Scott 213), spotless, vivid look, o.g., never hinged, Extremely Fine to Superb, with 2021 and 2007 P.S.E. certificates, each graded XF-SUP 95. SMQ XF-SUP 95; \$1,200. Estimate \$1,000 - 1,500

1020 ★★

1887, 3¢ vermilion (Scott 214), clean margin symmetry, o.g., never hinged, Extremely Fine, with 2017 P.F. certificate graded XF 90. SMQ XF 90; \$475. Estimate \$350 - 500



1020



1021

1021 ★★

1888, 4¢ carmine (Scott 215), clean, neat alignment, o.g., never hinged, Extremely Fine, with 2024 P.S.E. certificate graded XF 90 and 1983 and 1998 P.F. certificates. SMQ XF 90; \$1,800. Estimate \$1,500 - 2,000

1022 ★

1888, 5¢ indigo (Scott 216), generous border spacing, o.g., previously hinged, Extremely Fine to Superb, with 2011 P.S.E. certificate graded XF-SUP 95J and 1990 P.F. certificate. SMQ XF-SUP 95J; \$1,150. Estimate \$800 - 1,200



1022



1023

1023 ★★

1888, 30¢ orange brown (Scott 217), exceptional color clarity, o.g., never hinged, Extremely Fine, with 2007 P.S.E. certificate graded XF 90 and 1985 P.F. certificate. SMQ XF 90; \$2,500. Estimate \$2,000 - 3,000

### 1890-1893 SMALL BANK NOTES ISSUE

1024 ★★

1890, 1¢ dull blue (Scott 219), abundant spacing around, o.g., never hinged, Extremely Fine to Superb, with 2009 and 2021 P.S.E. certificates, each graded XF-SUP 95J. SMQ XF-SUP 95J; \$2,150. Estimate \$2,000 - 3,000



1024



1025

1025 ★★

1890, 2¢ carmine (Scott 220), harmonious frame balance, o.g., never hinged, Superb, with 2021 P.S.E. certificate graded SUP 98J. SMQ SUP 98J; \$4,500. Estimate \$4,000 - 6,000

1026 ★★

1890, 2¢ carmine, cap on left "2" (Scott 220a), vividly pure hue, o.g., never hinged, Extremely Fine, with 2008 P.S.E. certificate graded XF 90. SMQ XF 90; \$1,150. Estimate \$800 - 1,200



1026





1027

1027 ★★

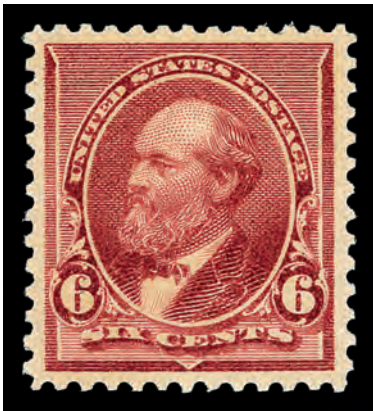
1890, 4¢ dark brown (Scott 222), remarkably sharp image, o.g., never hinged, Extremely Fine, with 2021 and 2006 P.S.E. certificates, both graded XF 90 and 1998 P.F. certificate. SMQ **XF 90**; \$900. Estimate \$750 - 1,000

1028 ★★

1890, 5¢ chocolate (Scott 223), oversized balanced margins, o.g., never hinged, Extremely Fine to Superb, with 2008 and 2021 P.S.E. certificates, each graded XF-SUP 95J, 1999 P.F. certificate. SMQ **XF-SUP 95J**; \$3,500. Estimate \$3,000 - 4,000



1028



1029

1029 ★★

1890, 6¢ brown red (Scott 224), bright, vibrant condition, o.g., never hinged, Extremely Fine to Superb, with 2021 and 2007 P.S.E. certificates, each graded XF-SUP 95. SMQ **XF-SUP 95**; \$1,350. Estimate \$1,000 - 1,500

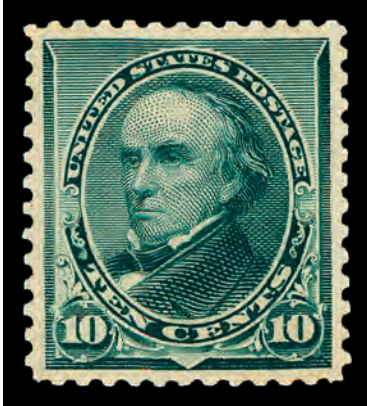
1030 ★★

1893, 8¢ lilac (Scott 225), strikingly precise centering, o.g., never hinged, Extremely Fine to Superb, with 2005 P.S.E. certificate graded XF-SUP 95 and 2005 P.S.E. certificate. SMQ **XF-SUP 95**; \$1,400. Estimate \$1,000 - 1,500



1030





1031

1031 ★★

1890, 10¢ green (Scott 226), Post Office radiant quality, o.g., never hinged, Extremely Fine to Superb, with 2008 P.S.E. certificate graded XF-SUP 95. SMQ XF-SUP 95; \$4,250. Estimate \$3,500 - 5,000

1032 ★★

1890, 15¢ indigo (Scott 227), single with plate number, sharp intense strike, o.g., never hinged, Extremely Fine, with 2019 P.S.E. certificate graded XF 90 and 2001 P.F. certificate. SMQ XF 90; \$1,850. Estimate \$1,500 - 2,000

(photo on back cover)



1032



1033

1033 ★★

1890, 30¢ black (Scott 228), clean brilliant look, o.g., never hinged, Extremely Fine, with 2007 P.S.E. certificate graded XF 90, 2001 P.S.E. certificate, 2001 and 1991 P.F. certificates. SMQ XF 90; \$2,600. Estimate \$2,000 - 3,000

## 1893 COLUMBIAN ISSUE

1034 ★★

1893, 1¢ Columbian (Scott 230), true margin balance, o.g., never hinged, Extremely Fine to Superb, with 2007 P.S.E. certificate graded XF-SUP 95. SMQ XF-SUP 95; \$300. Estimate \$250 - 350



1034



1035

1035 ★★

1893, 2¢ Columbian (Scott 231), bright, gleaming presentation, o.g., never hinged, Extremely Fine to Superb, with 2007 P.S.E. certificate graded XF-SUP 95. SMQ XF-SUP 95; \$350. Estimate \$300 - 400

1036 ★★

1893, 2¢ Columbian, “broken hat” variety (Scott 231 var.), bright and appealing; the SMQ doesn’t currently list this variety, but if we assume a premium ratio of 4.5x, then this stamp would have a SMQ value of \$1,575, o.g., never hinged, Extremely Fine to Superb, with 2005 P.S.E. certificate graded XF-SUP 95. SMQ XF-SUP 95; \$350 ++ for regular. Estimate \$1,000 - 1,500



1036



1037

1037 ★★

1893, 3¢ Columbian (Scott 232), jumbo framed margins, o.g., never hinged, Extremely Fine to Superb, with 2006 P.F. certificate graded XF-SUP 95. SMQ XF-SUP 95; \$675. Estimate \$500 - 750

1038 ★★

1893, 4¢ Columbian (Scott 233), remarkably fresh condition, o.g., never hinged, Extremely Fine to Superb, with 2008 P.S.E. certificate graded XF-SUP 95. SMQ XF-SUP 95; \$900. Estimate \$750 - 1,000



1038





1039

1039 ★★

1893, 5¢ Columbian (Scott 234), sparkling, vivid freshness, o.g., never hinged, Extremely Fine to Superb, with 2004 P.S.E. certificate graded XF-SUP 95. SMQ **XF-SUP 95**; \$850.  
Estimate \$750 - 1,000

1040 ★★

1893, 6¢ Columbian (Scott 235), unusually fresh condition, o.g., never hinged, Extremely Fine to Superb, with 2010 P.S.E. certificate graded XF-SUP 95. SMQ **XF-SUP 95**; \$1,050.  
Estimate \$800 - 1,200



1040



1041

1041 ★★

1893, 8¢ Columbian (Scott 236), wonderful even centering, o.g., never hinged, Extremely Fine to Superb, with 2008 P.S.E. certificate graded XF-SUP 95. SMQ **XF-SUP 95**; \$1,750.  
Estimate \$1,500 - 2,000

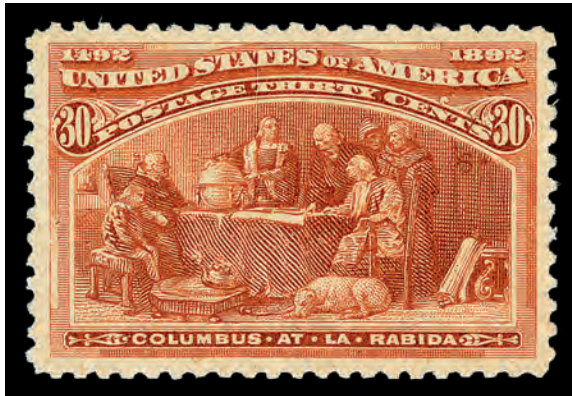
1042 ★★

1893, 10¢ Columbian (Scott 237), rich vibrant impression, o.g., never hinged, Extremely Fine, with 2007 P.S.E. certificate graded XF 90 and 2000 P.F. certificate. SMQ **XF 90**; \$575.  
Estimate \$500 - 750



1042





1043

1043 ★★

1893, 30¢ Columbian (Scott 239), wonderfully precise centering, o.g., never hinged, Extremely Fine to Superb, with 2010 P.S.E. certificate graded XF-SUP 95. SMQ **XF-SUP 95**; \$2,250. Estimate \$2,000 - 3,000

1044 ★

1893, 50¢ Columbian (Scott 240), centered to near perfection, o.g., previously hinged, Superb, with 2021 P.S.E. certificate graded SUP 98 and 1996 P.F. certificate. SMQ **SUP 98**; \$3,600. Estimate \$3,000 - 4,000



1044



1045

1045 ★★

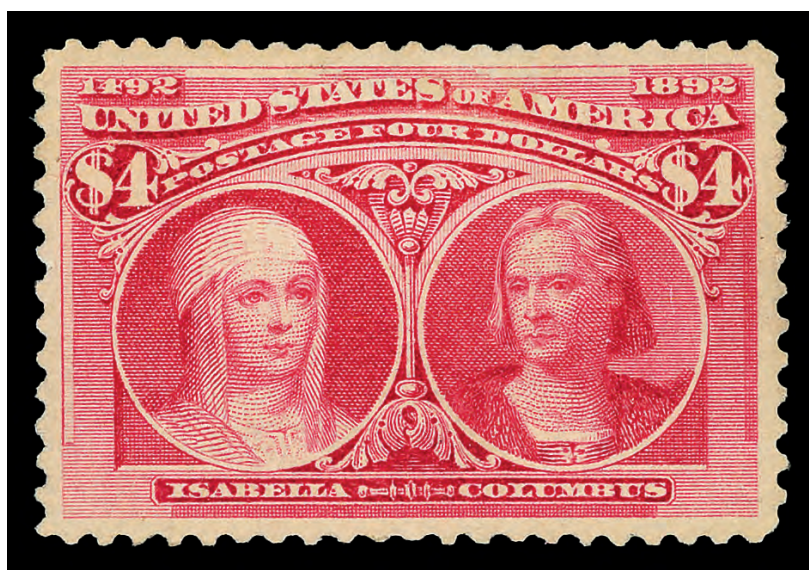
1893, \$1 Columbian (Scott 241), single with part imprint, appears freshly issued, o.g., never hinged, Very Fine to Extremely Fine, with 2013 P.F. certificate graded VF-XF 85 and 1978 and 2009 P.F. certificates. SMQ **VF-XF 85**; \$6,000. Estimate \$4,000 - 6,000

1046 ★

1893, \$3 Columbian (Scott 243), o.g., lightly hinged at top center, proof-quality intense color and detailed impression, exceptionally well-centered with wide even margins with full perfs all around, Extremely Fine to Superb, with 2001 and 2018 P.S.E. certificates, the latter graded XF-SUP 95. SMQ **XF-SUP 95**; \$4,800. Scott \$1,500. Estimate \$4,000 - 5,000



1046



1047

1047 ★

1893, \$4 Columbian (Scott 244), vivid, bold brightness, o.g., previously hinged, Extremely Fine to Superb, with 2023 P.S.E. certificate graded XF-SUP 95. SMQ **XF-SUP 95**; \$6,500. Estimate \$5,000 - 7,500

(photo on front cover)





1048

## 1894 FIRST BUREAU ISSUE, UNWATERMARKED

1048 ★★

1894, 1¢ ultramarine, unwatermarked (Scott 246), single with part imprint, strikingly luminous impression, o.g., never hinged, Extremely Fine, with 2020 P.S.A.G. certificate graded XF 90. SMQ XF 90; \$450. Estimate \$350 - 500

1049 ★★

1894, 2¢ pink, type I, unwatermarked (Scott 248), intense glowing appearance, o.g., never hinged, Extremely Fine to Superb, with 2019 P.S.E. certificate graded XF-SUP 95. SMQ XF-SUP 95; \$1,500. Estimate \$1,200 - 1,800



1049



1050

1050 ★★

1894, 2¢ carmine lake, type I, unwatermarked (Scott 249), crisp, roomy margins; the SMQ hasn't assigned a value for this grade yet, but if we look at the listings for a 95 (\$3,700) and a 98 (\$8,000), it's reasonable to place this stamp's value somewhere in that range, reflecting its exceptional quality, o.g., never hinged, Extremely Fine to Superb, with 2021 P.S.E. certificate graded XF-SUP 95J and 1984 P.F. certificate. Estimate \$4,000 - 6,000

1051 ★★

1894, 2¢ carmine, type I, unwatermarked (Scott 250), single with plate number, wonderfully even alignment, o.g., never hinged, Extremely Fine, with 2010 P.S.E. certificate graded XF 90. SMQ XF 90; \$365. Estimate \$300 - 400



1051





1052

1052 ★★

1894, 2¢ carmine, type II, unwatermarked (Scott 251), vibrant mint quality, o.g., never hinged, Very Fine to Extremely Fine, with 2006 P.S.E. certificate graded VF-XF 85. SMQ VF-XF 85; \$1,700. Estimate \$1,500 - 2,000

1053 ★★

1894, 2¢ carmine, type III, unwatermarked (Scott 252), newly struck brilliance, o.g., never hinged, Extremely Fine, with 2008 P.S.E. certificate graded XF 90. SMQ XF 90; \$1,150. Estimate \$800 - 1,200



1053



1054

1054 ★★

1894, 3¢ purple, unwatermarked (Scott 253), single with part imprint, outstanding margin balance, o.g., never hinged, Extremely Fine to Superb, with 2021 P.S.E. certificate graded XF-SUP 95 and 1999 P.F. certificate. SMQ XF-SUP 95; \$3,675. Estimate \$3,000 - 4,000

(photo on back cover)

1055 ★★

1894, 4¢ dark brown, unwatermarked (Scott 254), striking vivid brilliance, o.g., never hinged, Extremely Fine to Superb, with 2007 and 2021 P.S.E. certificates, both graded XF-SUP 95 and 1998 P.F. certificate. SMQ XF-SUP 95; \$4,250. Estimate \$3,500 - 5,000



1055



1056

1056 ★★

1894, 5¢ chocolate, unwatermarked (Scott 255), deep and bold color, o.g., never hinged, Extremely Fine to Superb, with 2005 P.S.E. certificate graded XF-SUP 95 and 2004 P.S.E. certificate. SMQ XF-SUP 95; \$2,500. Estimate \$2,000 - 3,000

(photo on back cover)

1057 ★★

1894, 8¢ violet brown, unwatermarked (Scott 257), large proportioned margins, o.g., never hinged, Very Fine to Extremely Fine, with 2021 P.S.E. certificate graded VF-XF 85J and 2000 P.F. certificate. SMQ VF-XF 85J; \$900. Estimate \$750 - 1,000



1057



1058

1058 ★

1894, 10¢ dark green, unwatermarked (Scott 258), vivid, lively glow, o.g., previously hinged, Extremely Fine, with 2013 P.S.E. certificate graded XF 90J and 2013 P.F. certificate. SMQ XF 90J; \$900. Estimate \$750 - 1,000

1059 ★★

1894, 50¢ orange, unwatermarked (Scott 260), o.g., never hinged, vibrant color, remarkably well centered for this notoriously challenging issue, Extremely Fine, ex-Gorham, with 2005 & 2006 P.F. certificates, the latter graded XF 90 (1995 P.F. no longer accompanies). SMQ XF 90; \$2,950. Scott \$1,450. Estimate \$2,000 - 3,000



1059



1060

1060 ★

1894, \$1 black, type I, unwatermarked (Scott 261), neat, even proportions, o.g., previously hinged, Extremely Fine to Superb, with 2024 P.S.E. certificate graded XF-SUP 95 and 1994 P.F. certificate. SMQ **XF-SUP 95**; \$3,900.  
Estimate \$3,500 - 5,000

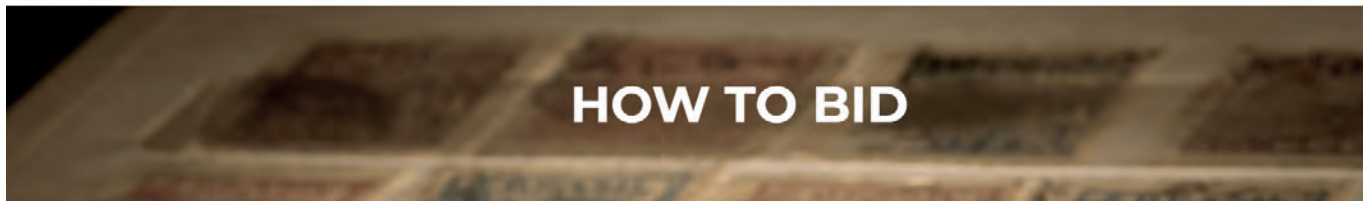
1061 ★

1894, \$1 black, type II, unwatermarked (Scott 261A), exceptional border balance, o.g., previously hinged, Very Fine to Extremely Fine, with 2020 P.S.E. certificate graded VF-XF 85J. SMQ **VF-XF 85J**; \$3,000. Estimate \$2,500 - 3,000



1061

Kelleher website featuring these sections:  
**Learn how to bid.**



Kelleher currently conducts two distinctly different auctions: Public Auctions which are live in person and live bidding on the internet. Bids may be placed in advance of the sale with the firm by mail, phone, FAX, email or at Stamp Auction Network (SAN). These sales are governed by Public Auction terms of sale. Weekly online sales closing each Sunday evening at 9PM (ET) are available online at Stamp Auction Network (SAN). These sales are governed by Weekly Online Sales terms of sale. You can link directly to the table of contents of each sale from our website or directly at Stamp Auction Network (SAN).

Kelleher offers **telephone bidding** during the auction for clients on a priority basis, so please call us to arrange for phone bidding as soon as possible.





1062

1062 ★

**1894, \$5 dark green, unwatermarked (Scott 263)**, deep rich color on gleaming white paper, as fresh as the day it was printed, choice centering with well-proportioned margins, Extremely Fine, Experienced collectors know that the \$5 First Bureau Issue is an extremely challenging stamp to find in sound original gum Extremely Fine condition, with 1990 P.F. and 2024 P.S.E. certificates, the latter graded XF 90. SMQ **XF 90**; \$7,000. Scott \$4,000. Estimate \$5,000 - 7,000

(photo on front cover)



1063

## 1895 FIRST BUREAU ISSUE, WATERMARKED

1063 ★★

1895, 1¢ blue, D.L. watermark (Scott 264), centered with precision, o.g., never hinged, Extremely Fine to Superb, with 2011 P.F. certificate graded XF-SUP 95 XQ and 2013 P.S.E. certificate graded XF-Sup 95. SMQ **XF-SUP 95**; \$340. Estimate \$350 - 500

1064 ★★

1895, 2¢ carmine, type I, D.L. watermark (Scott 265), crisp, clean presentation, o.g., never hinged, Extremely Fine, with 2020 P.S.E. certificate graded XF 90. SMQ **XF 90**; \$320. Estimate \$250 - 350



1064



1065

1065 ★★

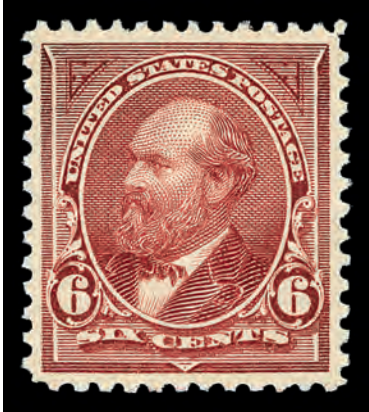
1895, 3¢ purple, D.L. watermark (Scott 268), intense sparkling condition, SMQ is for a single taken from a block of four graded XF-Sup 95 from which this single is taken, o.g., never hinged, Extremely Fine to Superb, single with 2010 P.S.E. certificate graded XF-SUP 95 for block. SMQ **XF-SUP 95**; \$1,175. Estimate \$800 - 1,200

1066 ★★

1895, 4¢ dark brown, D.L. watermark (Scott 269), well-proportioned jumbo look, o.g., never hinged, Extremely Fine, with 2008 P.S.E. certificate graded XF 90J. SMQ **XF 90J**; \$750. Estimate \$600 - 800



1066



1067

1067 ★★

1895, 6¢ dull brown, D.L. watermark (Scott 271), exceptionally roomy borders, o.g., never hinged, Extremely Fine to Superb, with 2008 and 2021 P.S.E. certificates, each graded XF-SUP 95. SMQ **XF-SUP 95**; \$4,000.  
Estimate \$3,500 - 5,000

1068 ★★

1895, 8¢ violet brown, D.L. watermark (Scott 272), flawless margin harmony, o.g., never hinged, Extremely Fine, with 2019 P.S.A.G. certificate graded XF 90. SMQ **XF 90**; \$525.  
Estimate \$400 - 600



1068



1069

1069 ★★

1895, 10¢ dark green, D.L. watermark (Scott 273), outstanding large borders, o.g., never hinged, Extremely Fine to Superb, with 2008 and 2021 P.S.E. certificates and 2006 P.F. certificate, all graded XF-SUP 95 and 2002 P.F. certificate. SMQ **XF-SUP 95**; \$3,000.  
Estimate \$2,500 - 3,500

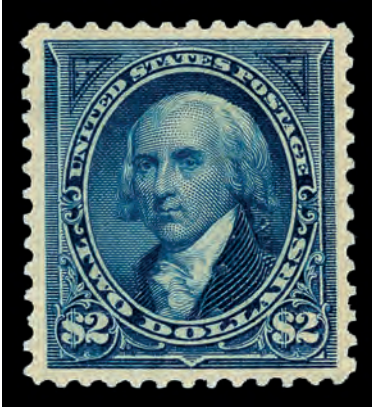
1070 ★★

1895, 50¢ red orange, D.L. watermark (Scott 275a), pleasingly proportioned example, o.g., never hinged, Extremely Fine, with 2007 P.S.E. certificate graded XF 90. SMQ **XF 90**; \$2,750.  
Estimate \$2,000 - 3,000



1070





1071

1071 ★

1895, \$2 bright blue, D.L. watermark (Scott 277), consistently sharp centering, o.g., previously hinged, Extremely Fine to Superb, with 2024 P.S.E. certificate graded XF-SUP 95 and 1996 P.F. certificate. SMQ **XF-SUP 95**; \$2,850. Estimate \$2,500 - 3,500

1072 ★

1895, \$5 dark green, D.L. watermark (Scott 278), neatly balanced margins, o.g., previously hinged, Extremely Fine to Superb, with 2024 P.S.E. certificate graded XF-SUP 95 and 2004 P.S.E. certificate. SMQ **XF-SUP 95**; \$5,000. Estimate \$4,000 - 6,000



1072



1073

### 1898 FIRST BUREAU ISSUE, UPU COLORS

1073 ★★

1898, 1¢ deep green (Scott 279), large and balanced, o.g., never hinged, Extremely Fine, with 2020 P.S.E. certificate graded XF 90J. SMQ **XF 90J**; \$195. Estimate \$150 - 200

1074 ★★

1898, 4¢ orange brown (Scott 280b), well-proportioned example, o.g., never hinged, Extremely Fine to Superb, with 2006 P.S.E. certificate graded XF-SUP 95. SMQ **XF-SUP 95**; \$1,000. Estimate \$800 - 1,200



1074



1075

1075 ★★

1898, 5¢ dark blue (Scott 281), untouched original state, o.g., never hinged, Extremely Fine to Superb, with 2007 P.S.E. certificate graded XF-SUP 95. SMQ XF-SUP 95; \$1,300. Estimate \$1,000 - 1,500

1076 ★★

1898, 6¢ lake (Scott 282), Post Office bright appeal, o.g., never hinged, Extremely Fine to Superb, with 2019 P.S.A.G. certificate graded XF-SUP 95. SMQ XF-SUP 95; \$1,400. Estimate \$1,000 - 1,500



1076



1077

1077 ★★

1898, 10¢ orange brown, type II (Scott 283), crisp Post Office fresh condition, o.g., never hinged, Very Fine, with 2007 P.S.E. certificate graded VF 80 and 1989 P.F. certificate. SMQ VF 80; \$475. Estimate \$350 - 500

## 1898 TRANS-MISSISSIPPI ISSUE

1078 ★★

1898, 4¢ Trans-Miss. (Scott 287), appears fresh as issued, o.g., never hinged, Extremely Fine, with 2019 P.F. certificate graded XF 90 XQ. SMQ XF 90 XQ; \$850. Estimate \$800 - 1,200



1078





1079

1079 ★★

1898, 5c Trans-Miss. (Scott 288), extra-large border margins, o.g., never hinged, Extremely Fine to Superb, with 2009 P.F. certificate graded XF-SUP 95. SMQ XF-SUP 95; \$2,000. Estimate \$2,000 - 3,000

1080 ★★

1898, 8c Trans-Miss. (Scott 289), rich, lively shading, o.g., never hinged, Very Fine, with 1996 P.S.E. certificate. Scott \$400. Estimate \$200 - 300



1080



1081

1081 ★★

1898, 10c Trans-Miss. (Scott 290), generously framed example, o.g., never hinged, Extremely Fine to Superb, with 2016 P.S.E. and 2008 P.F. certificates, each graded XF-SUP 95, 2002 P.S.E. and 2003 P.F. certificates. SMQ XF-SUP 95; \$6,000. Estimate \$5,000 - 7,500

1082 ★★

1898, \$1 Trans-Miss. (Scott 292), razor-sharp centering, o.g., never hinged, Very Fine to Extremely Fine, *only 56,900 were issued to postmasters; an unknown quantity was destroyed in March 1900*, with 2020 P.S.E. certificate graded VF-XF 85 and 1999 P.F. certificate. SMQ VF-XF 85; \$4,700. Estimate \$3,500 - 5,000



1082



1083

1083 ★

1898, \$2 Trans-Miss. (Scott 293), strong, clear strike, o.g., previously hinged, Extremely Fine, with 2017 P.S.E. certificate graded XF 90. SMQ **XF 90**; \$2,750. Estimate \$2,000 - 3,000

## 1901 PAN-AMERICAN ISSUE

1084 ★★

1901, 4¢ Pan-American (Scott 296), remarkably crisp condition, o.g., never hinged, Extremely Fine to Superb, with 2005 P.S.E. certificate graded XF-SUP 95 and 1996 P.F. certificate. SMQ **XF-SUP 95**; \$1,050. Estimate \$800 - 1,200



1084



1085

1085 ★★

1901, 5¢ Pan-American (Scott 297), single with plate number, remarkably well centered, o.g., never hinged, Extremely Fine to Superb, with 2016 and 2010 P.F. certificates, each graded XF-SUP 95. SMQ **XF-SUP 95**; \$1,350. Estimate \$1,000 - 1,500

1086 ★★

1901, 8¢ Pan-American (Scott 298), boldly centered example, o.g., never hinged, Extremely Fine to Superb, with 2009 P.S.E. certificate graded XF-SUP 95. SMQ **XF-SUP 95**; \$950. Estimate \$800 - 1,200



1086





1087

1087 ★★

1901, 10¢ Pan-American (Scott 299), bold, radiant vibrancy, o.g., never hinged, Extremely Fine, with 2012 P.S.E. certificate graded XF 90. SMQ XF 90; \$650. Estimate \$500 - 750

## 1902-1908 SECOND BUREAU ISSUE

1088 ★★

1903, 3¢ bright violet (Scott 302), fresh vivid coloration, o.g., never hinged, Extremely Fine to Superb, with 2012 P.S.E. certificate graded XF-SUP 95. SMQ XF-SUP 95; \$825. Estimate \$750 - 1,000



1088



1089

1089 ★★

1903, 4¢ brown (Scott 303), boldly struck design, o.g., never hinged, Extremely Fine to Superb, with 2002 P.S.E. certificate graded XF-SUP 95 and 1991 P.F. certificate. SMQ XF-SUP 95; \$1,150. Estimate \$800 - 1,200

1090 ★★

1903, 5¢ blue (Scott 304), brilliantly clear impression, o.g., never hinged, Extremely Fine, with 2020 Crowe certificate graded XF 90. SMQ XF 90; \$400. Estimate \$300 - 400



1090





1091

1091 ★★

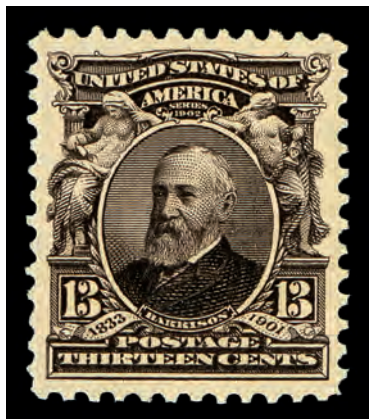
1902, 8¢ violet black (Scott 306), bold, vivid impression, o.g., never hinged, Extremely Fine, with 2021 P.S.A.G. certificate graded XF 90. SMQ XF 90; \$275. Estimate \$200 - 300

1092 ★★

1903, 10¢ pale red brown (Scott 307), sparkling clear hue, o.g., never hinged, Extremely Fine, with 2008 P.S.E. certificate graded XF 90. SMQ XF 90; \$425. Estimate \$300 - 400



1092



1093

1093 ★★

1902, 13¢ purple black (Scott 308), appealing Post Office fresh quality, o.g., never hinged, Extremely Fine to Superb, with 2016 P.S.A.G. certificate graded XF-SUP 95. SMQ XF-SUP 95; \$800. Estimate \$750 - 1,000

1094 ★★

1903, 15¢ olive green (Scott 309), o.g., never hinged, intense color, Post Office fresh, Extremely Fine to Superb, an incredible stamp, only 2 98s and 1 98J grade higher and 4 others share this lofty grade. As an indicator of rarity, David Gorham owned XF examples of every other issue in this set; he could not find a 15¢ that met his high standards, with 1991 P.F. and 2024 P.S.E. certificates, the latter graded XF-SUP 95. SMQ XF-SUP 95; \$3,650. Scott \$450. Estimate \$3,500 - 4,500

(photo on front cover)



1094



1095

1095 ★

1903, 50¢ orange (Scott 310), well-proportioned margins, o.g., previously hinged, Extremely Fine to Superb, with 2023 P.S.E. certificate graded XF-SUP 95 and 2006 P.F. certificate. SMQ XF-SUP 95; \$1,000. Estimate \$800 - 1,200

1096 ★★

1903, \$1 black (Scott 311), clear and balanced, o.g., never hinged, Extremely Fine, with 2008 and 2020 P.S.E. certificates, both graded XF 90. SMQ XF 90; \$3,500. Estimate \$3,000 - 4,000



1096



1097

1097 ★

1903, \$2 dark blue (Scott 312), near perfect symmetry maintained, o.g., previously hinged, Extremely Fine to Superb, with 2009 P.S.E. certificate graded XF-SUP 95 and 1980 P.F. certificate. SMQ XF-SUP 95; \$2,000. Estimate \$2,000 - 3,000

1098 ★

1903, \$5 dark green (Scott 313), centered with elegance, o.g., previously hinged, Extremely Fine, with 2017 P.F. certificate graded XF 90. SMQ XF 90; \$3,250. Estimate \$2,000 - 3,000



1098





1099

1099 ★★

1908, 5¢ blue, imperf. (Scott 315), strikingly broad borders; the SMQ does not currently list a price for this grade, but we can estimate its value by looking at the prices for grades 95 (\$1,000) and 98 (\$1,400), and placing it somewhere between those two figures, o.g., never hinged, Extremely Fine to Superb, with 2003 P.S.E. certificate graded XF-SUP 95J. Estimate \$1,000 - 1,500

1100 ★★

1903, 2¢ lake, type II (Scott 319F), rich, striking hue, o.g., never hinged, Extremely Fine, with 2014 P.S.A.G. certificate graded XF 90. SMQ XF 90; \$180. Estimate \$150 - 200



1100



1101

## 1904 LOUISIANA PURCHASE ISSUE

1101 ★★

1904, 3¢ Louisiana Purchase (Scott 325), single with plate number, unusually precise centering, o.g., never hinged, Extremely Fine, with 2010 P.S.E. certificate graded XF 90. SMQ XF 90; \$325. Estimate \$250 - 350

1102 ★★

1904, 5¢ Louisiana Purchase (Scott 326), single with imprint, uncommonly sharp alignment, o.g., never hinged, Extremely Fine to Superb, with 2009 P.S.E. certificate graded XF-SUP 95 and 2000 P.F. certificate. SMQ XF-SUP 95; \$1,350. Estimate \$1,200 - 1,500

(photo on back cover)



1102





1103

1103 ★

1904, 10¢ Louisiana Purchase (Scott 327), brightly vivid appearance, o.g., previously hinged, Very Fine to Extremely Fine, with 1989 P.S.E. certificate. Scott \$125. Estimate \$100 - 150

## 1907 JAMESTOWN ISSUE

1104 ★★

1907, 1¢ Jamestown (Scott 328), o.g., never hinged, well-centered for this notoriously difficult issue, as fresh as the day it was printed, Extremely Fine. Scott \$75. Estimate \$150 - 200



1104



1105

1105 ★★

1907, 2¢ Jamestown (Scott 329), crisp impression, o.g., never hinged, Extremely Fine, with 2019 P.S.A.G. certificate graded XF 90. SMQ XF 90; \$375. Estimate \$250 - 350

1106 ★★

1907, 5¢ Jamestown (Scott 330), o.g., never hinged, beautiful deep blue color on fresh white paper with even perfs all around, Extremely Fine. Scott \$375. Estimate \$250 - 350



1106



1107

## 1908-1909 WASHINGTON-FRANKLIN ISSUE, DL WMK, PERF 12

1107 ★★

1908, 1¢ green, D.L. watermark (Scott 331), roomy margin spacing, o.g., never hinged, Extremely Fine to Superb, with 2007 P.S.E. certificate graded XF-SUP 95J. SMQ XF-SUP 95J; \$275. Estimate \$200 - 300

1108 ★★

1908, 2¢ carmine, D.L. watermark (Scott 332), single with part imprint, outstandingly wide example, o.g., never hinged, Extremely Fine to Superb, with 2009 P.S.E. certificate graded XF-SUP 95J. SMQ XF-SUP 95J; \$275. Estimate \$200 - 300



1108



1109

1109 ★★

1908, 3¢ deep violet, type I, D.L. watermark (Scott 333), clear radiant hue, o.g., never hinged, Extremely Fine, with 2018 P.S.A.G. certificate graded XF 90. SMQ XF 90; \$175. Estimate \$150 - 200

1110 ★★

1908, 4¢ orange brown, D.L. watermark (Scott 334), exceptionally broad margins, o.g., never hinged, Extremely Fine to Superb, with 2013 P.S.A.G. certificate graded XF-SUP 95J. SMQ XF-SUP 95J; \$1,000. Estimate \$800 - 1,200



1110





1111

1111 ★★

1908, 5¢ blue, D.L. watermark (Scott 335), crisp, uniform centering, o.g., never hinged, Extremely Fine to Superb, with 2004 P.S.E. certificate graded XF-SUP 95. SMQ **XF-SUP 95**; \$900. Estimate \$750 - 1,000

1112 ★★

1909, 15¢ pale ultramarine, D.L. watermark (Scott 340), striking bright appearance, o.g., never hinged, Extremely Fine to Superb, with 2008 P.S.E. certificate graded XF-SUP 95 and 2000 P.F. certificate. SMQ **XF-SUP 95**; \$1,150. Estimate \$800 - 1,200



1112



1113

1113 ★★

1909, 50¢ violet, D.L. watermark (Scott 341), clear, balanced alignment, o.g., never hinged, Extremely Fine, with 2005 P.S.E. certificate graded XF 90 and 2004 P.F. certificate. SMQ **XF 90**; \$1,600. Estimate \$1,500 - 2,000

1114 ★★

1909, \$1 violet brown, D.L. watermark (Scott 342), sparkingly preserved example, o.g., never hinged, Extremely Fine, with 2005 P.S.E. certificate graded XF 90 and 2004 P.F. certificate. SMQ **XF 90**; \$2,750. Estimate \$2,000 - 3,000



1114





1115

## 1908-1909 WASHINGTON-FRANKLIN ISSUE, DL WMK, IMPERF

1115 ★★

1909, 4¢ orange brown, D.L. watermark, imperf. (Scott 346), exceptionally aligned design, o.g., never hinged, Superb, with 2020 P.S.E. certificate graded SUP 98. SMQ SUP 98; \$135. Estimate \$100 - 150

## 1908-1910 WASHINGTON-FRANKLIN ISSUE, DL WMK, PERF 12 COILS

1116 ★★

1908, 1¢ green, D.L. watermark, coil, perf. 12 horizontally (Scott 348), brilliant striking shade, o.g., never hinged, Extremely Fine, with 2005 P.F. certificate. Scott \$80. Estimate \$100 - 150



1116



1117

1117 ★★

1908, 1¢ green, D.L. watermark, coil, perf. 12 horizontally (Scott 348), line pair, near-perfect positioning, o.g., never hinged, Extremely Fine, with 2024 P.S.E. and 2023 Crowe certificates, both graded XF 90. SMQ XF 90; \$1,000. Estimate \$800 - 1,200

1118 ★★

1909, 2¢ carmine, D.L. watermark, coil, perf. 12 horizontally (Scott 349), dazzlingly bright look, o.g., never hinged, Extremely Fine to Superb, with 2007 P.S.E. certificate graded XF-SUP 95. SMQ XF-SUP 95; \$1,000. Estimate \$800 - 1,200



1118



## THE DANIEL METLAY SALE OF QUALITY UNITED STATES STAMPS



1119

1119 ★★

1910, 4¢ orange brown, D.L. watermark, coil, perf. 12 horizontally (Scott 350), full large margins, o.g., never hinged, Extremely Fine to Superb, with 2024 P.S.E. certificate graded XF-SUP 95J and 1991 P.F. certificate. SMQ XF-SUP 95J; \$2,500. Estimate \$2,000 - 3,000

1120 ★★

1909, 5¢ blue, D.L. watermark, coil, perf. 12 horizontally (Scott 351), radiant color, o.g., never hinged, Extremely Fine, with 2020 P.S.A.G. certificate graded XF 90. SMQ XF 90; \$750. Estimate \$500 - 750



1120

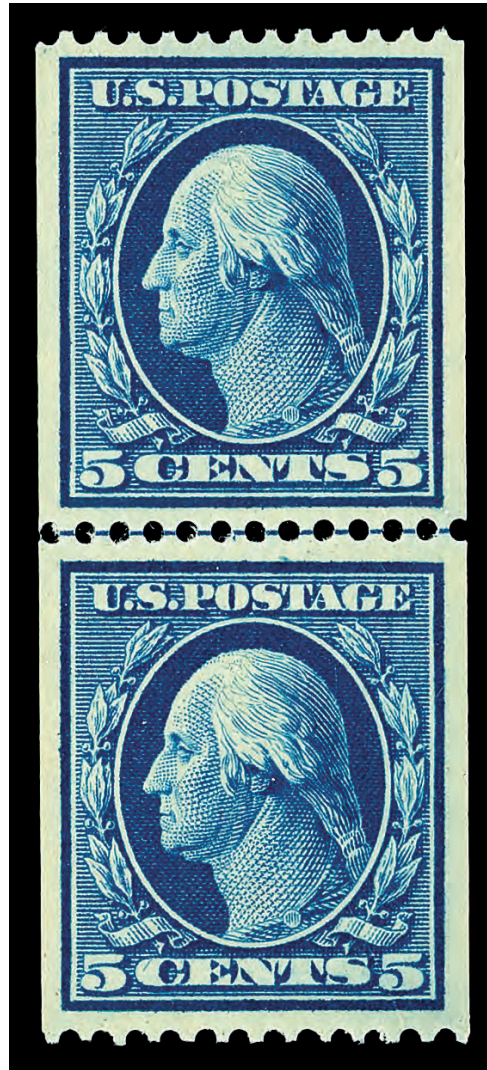
Kelleher website featuring these sections:  
**View and download all past catalogs**



**Subscribe and view our current and past quarterly magazines**







1121

1121 ★★

1909, 5¢ blue, D.L. watermark, coil, perf. 12 horizontally (Scott 351), guide line pair, o.g., never hinged, proof-quality dark color and detailed impression, nearly perfectly centered with even margins on all sides, Extremely Fine to Superb, an absolutely perfect guide line pair worthy of the finest collection, with 2023 P.F. and 2021 P.S.E. certificates, the former graded XF-SUP 95 and the latter graded XF 90. SMQ XF-SUP 95; \$8,000. Scott \$2,350. Estimate \$6,000 - 8,000

(photo on front cover)





1122

1122 ★★

1909, 1¢ green, D.L. watermark, coil, perf. 12 vertically (Scott 352), line pair, ideal margin balance, o.g., never hinged, Very Fine, with 2023 P.S.E. certificate graded VF 80. SMQ VF 80; \$1,850. Estimate \$1,500 - 2,000

1123 ★★

1909, 2¢ carmine, D.L. watermark, coil, perf. 12 vertically (Scott 353), boldly radiant tone, o.g., never hinged, Extremely Fine, with 2017 P.S.E. certificate graded XF 90 and 2001 P.S.E. certificate. SMQ XF 90; \$425. Estimate \$300 - 400



1123



1124

1124 ★★

1909, 4¢ orange brown, D.L. watermark, coil, perf. 12 vertically (Scott 354), crisp, even margins, o.g., never hinged, Very Fine to Extremely Fine, with 2025 P.F. certificate graded VF-XF 85. SMQ VF-XF 85; \$625. Estimate \$500 - 750

## 1909 WASHINGTON-FRANKLIN ISSUE, BLUISH PAPER

1125 ★★

1909, 1¢ green, on bluish paper (Scott 357), pleasingly even borders, o.g., never hinged, Extremely Fine, with 2007 P.S.E. certificate graded XF 90. SMQ XF 90; \$425. Estimate \$300 - 400



1125



1126

1126 ★★

1909, 2¢ carmine, on bluish paper (Scott 358), crisp and vivid, o.g., never hinged, Extremely Fine, with 2007 P.S.E. certificate graded XF 90. SMQ XF 90; \$425. Estimate \$300 - 400

## 1909 COMMEMORATIVE ISSUES



1127

1127 ★★

1909, 2¢ Lincoln Centenary, imperf. (Scott 368), mathematically balanced borders, o.g., never hinged, Superb, with 2020 P.S.E. certificate graded GEM 100. SMQ Gem 100; \$260. Estimate \$200 - 300



1128

1128 ★

1909, 2¢ Lincoln Centenary, bluish paper (Scott 369), single with plate number, exceptional vibrant glow, o.g., previously hinged, Very Fine to Extremely Fine, with 1992 P.F. certificate. Scott \$150. Estimate \$150 - 200

1129 ★★

1909, 2¢ Hudson-Fulton (Scott 372), evenly struck margins, o.g., never hinged, Superb, with 2012 P.S.A.G. certificate graded SUP 98. SMQ SUP 98; \$525. Estimate \$400 - 600



1129





1130

## 1910-1911 WASHINGTON-FRANKLIN ISSUE, SL WMK, PERF 12

1130 ★★

1910, 1¢ green, S.L. watermark (Scott 374), single with part imprint, oversized, even spacing, o.g., never hinged, Extremely Fine to Superb, with 2017 P.F. certificate graded XF-SUP 95 XQ. SMQ XF-SUP 95; \$150. Estimate \$150 - 200

1131 ★★

1910, 2¢ carmine, S.L. watermark (Scott 375), single with plate number, massive balanced margins, o.g., never hinged, Extremely Fine to Superb, with 2002 P.S.E. certificate graded XF-SUP 95J. SMQ XF-SUP 95J; \$235. Estimate \$200 - 300



1131



1132

1132 ★★

1911, 4¢ brown, S.L. watermark (Scott 377), single with part imprint, expansive, full margins, o.g., never hinged, Extremely Fine, with 2010 P.S.E. certificate graded XF 90J. SMQ XF 90J; \$210. Estimate \$150 - 200

1133 ★

1911, 5¢ blue, S.L. watermark (Scott 378), single with plate number, strikingly broad margins, o.g., lightly hinged, Superb. Scott \$30. Estimate \$150 - 200



1133



1134

1134 ★★

1911, 8¢ olive green, S.L. watermark (Scott 380), precisely framed design, o.g., never hinged, Extremely Fine, with 2007 P.S.E. certificate graded XF 90. SMQ XF 90; \$450. Estimate \$350 - 500

1135 ★★

1911, 10¢ yellow, S.L. watermark (Scott 381), luminous shade intensity, huge margins, o.g., never hinged, Extremely Fine, with 2006 P.S.E. certificate graded XF 90. SMQ XF 90; \$450. Estimate \$350 - 500



1135



1136

1136 ★★

1911, 15¢ pale ultramarine, S.L. watermark (Scott 382), lively gleaming color, o.g., never hinged, Extremely Fine, with 2008 P.S.E. certificate graded XF 90. SMQ XF 90; \$1,100. Estimate \$800 - 1,200

## 1910-1911 WASHINGTON-FRANKLIN ISSUE, SL WMK, PERF 12 COILS

1137 ★★

1910, 1¢ green, S.L. watermark, coil, perf. 12 horizontally (Scott 385), line pair, brilliant overall glow, o.g., never hinged, Very Fine, with 2002 P.F. certificate. Scott \$1,000. Estimate \$500 - 750



1137





1138

1138 ★★

1910, 1¢ green, S.L. watermark, coil, perf. 12 vertically (Scott 387), strongly impressed design, o.g., never hinged, Extremely Fine, with 2025 P.F. certificate graded XF 90. SMQ XF 90; \$1,100. Estimate \$800 - 1,200

1139 ★

1910, 2¢ carmine, S.L. watermark, coil, perf. 12 vertically (Scott 388), spot-on centering, o.g., previously hinged, Extremely Fine, with 2024 P.S.E. certificate graded XF 90 and 1992 P.F. certificate. SMQ XF 90; \$2,000. Estimate \$1,500 - 2,000



1139



1140

### 1910-1913 WASHINGTON-FRANKLIN ISSUE, SL WMK, PERF 8½ COILS

1140 ★★

1910, 1¢ green, S.L. watermark, coil, perf. 8½ horizontally (Scott 390), massive jumbo margin example, o.g., never hinged, Extremely Fine. Scott \$9. Estimate \$150 - 200

1141 ★★

1910, 1¢ green, S.L. watermark, coil, perf. 8½ horizontally (Scott 390), line pair, jumbo bordered example, o.g., never hinged, Extremely Fine. Scott \$73. Estimate \$150 - 200



1141



1142

1142 ★★

1910, 2¢ carmine, S.L. watermark, coil, perf. 8½ horizontally (Scott 391), perfect frame layout, o.g., never hinged, Superb, with 2023 P.S.E. certificate graded SUP 98. SMQ SUP 98; \$1,200. Estimate \$1,000 - 1,500

1143 ★★/★

1910, 2¢ carmine, S.L. watermark, coil, perf. 8½ horizontally (Scott 391), line pair, luminous radiant appearance, o.g., lightly hinged (bottom stamp never hinged), Very Fine, with 1983 P.F. certificate. Scott \$1,000. Estimate \$500 - 750



1143



1144

1144 ★★

1910, 1¢ green, S.L. watermark, coil, perf. 8½ vertically (Scott 392), distinctly strong impression, o.g., never hinged, Extremely Fine, with 2017 P.F. certificate graded XF 90 and 2000 P.F. certificate. SMQ XF 90; \$325. Estimate \$250 - 350

1145 ★★

1910, 2¢ carmine, S.L. watermark, coil, perf. 8½ vertically (Scott 393), line pair, bright, newly issued look, o.g., never hinged, Extremely Fine, with 2008 P.S.E. certificate graded XF 90 and 1976 P.F. certificate. SMQ XF 90; \$1,150. Estimate \$1,000 - 1,500



1145





1146

1146 ★★

1911, 3¢ deep violet, type I, S.L. watermark, coil, perf. 8½ vertically (Scott 394), roomy proportioned borders, o.g., never hinged, Extremely Fine to Superb, with 2015 P.S.E. certificate graded XF-SUP 95J and 1988 P.F. certificate. SMQ XF-SUP 95J; \$850. Estimate \$750 - 1,000

1147 ★★

1911, 3¢ deep violet, type I, S.L. watermark, coil, perf. 8½ vertically (Scott 394), line pair, striking oversized margins, o.g., never hinged, Extremely Fine, with 2014 P.F. and 2014 P.S.E. certificates, both graded XF 90. SMQ XF 90; \$1,750. Estimate \$1,500 - 2,000



1147



1148

1148 ★★

1912, 4¢ brown, S.L. watermark, coil, perf. 8½ vertically (Scott 395), huge, balanced margins, o.g., never hinged, Very Fine, with 2024 P.S.E. certificate graded VF 80 and 1994 P.F. certificate. SMQ VF 80; \$135. Estimate \$100 - 150

1149 ★★

1912, 4¢ brown, S.L. watermark, coil, perf. 8½ vertically (Scott 395), line pair, roomy framed impression, o.g., never hinged, Extremely Fine, with 2017 P.F. certificate graded XF 90 and 1985 P.F. certificate. SMQ XF 90; \$1,700. Estimate \$1,500 - 2,000



1149



1150

1150 ★★

1913, 5¢ blue, S.L. watermark, coil, perf. 8½ vertically (Scott 396), radiantly bold tone, o.g., never hinged, Extremely Fine to Superb, with 2007 and 2015 P.S.E. certificates, each graded XF-SUP 95. SMQ XF-SUP 95; \$550.  
Estimate \$400 - 600

1151 ★★

1913, 5¢ blue, S.L. watermark, coil, perf. 8½ vertically (Scott 396), line pair, ideal frame proportions, o.g., never hinged, Very Fine to Extremely Fine, with 2013 P.S.E. certificate graded VF-XF 85. SMQ VF-XF 85; \$1,300.  
Estimate \$1,000 - 1,500



1151



1152

## 1913-1915 PANAMA-PACIFIC ISSUE

1152 ★★

1913, 5¢ Panama-Pacific, perf. 12 (Scott 399), sharp detail, o.g., never hinged, Extremely Fine to Superb, with 2016 P.F. certificate graded XF-SUP 95. SMQ XF-SUP 95; \$650.  
Estimate \$500 - 750

1153 ★★

1913, 10¢ Panama-Pacific, perf. 12, orange yellow (Scott 400), ample, even borders, o.g., never hinged, Extremely Fine, with 2007 P.F. certificate graded XF 90 and 2000 P.F. certificate. SMQ XF 90; \$400.  
Estimate \$300 - 400



1153





1154

1154 ★★

1915, 2¢ Panama-Pacific, perf. 10 (Scott 402), vibrant, glowing color tone, o.g., never hinged, Very Fine to Extremely Fine, with 2019 Crowe certificate graded VF-XF 85. SMQ **VF-XF 85**; \$230.  
Estimate \$200 - 300

1155 ★★

1915, 5¢ Panama-Pacific, perf. 10 (Scott 403), looks newly printed, o.g., never hinged, Extremely Fine to Superb, with 2019 P.S.E. certificate graded XF-SUP 95 and 1992 P.F. certificate. SMQ **XF-SUP 95**; \$1,350.  
Estimate \$1,200 - 1,500



1155



1156

## 1912-1914 WASHINGTON-FRANKLIN ISSUE, SL WMK, PERF 12

1156 ★★

1914, 7¢ black, S.L. watermark, perf. 12 (Scott 407), flawless mint-fresh state, o.g., never hinged, Extremely Fine, with 2018 P.S.E. certificate graded XF 90. SMQ **XF 90**; \$350.  
Estimate \$300 - 400

## 1912 WASHINGTON-FRANKLIN ISSUE, SL WMK, PERF 8½ COILS

1157 ★★

1912, 2¢ carmine, type I, S.L. watermark, coil, perf. 12 horizontally (Scott 411), expansive margin example, o.g., never hinged, Extremely Fine to Superb, with 2005 P.S.E. certificate graded XF-SUP 95J. SMQ **XF-SUP 95J**; \$160.  
Estimate \$150 - 200



1157



1158

1158 ★★

1912, 2¢ carmine, type I, S.L. watermark, coil, perf. 12 horizontally (Scott 411), line pair, harmonious layout, o.g., never hinged, Superb, with 2008 P.S.E. certificate graded SUP 98. SMQ SUP 98; \$900. Estimate \$800 - 1,200

1159 ★★

1912, 2¢ carmine, S.L. watermark, coil, perf. 12 vertically (Scott 413), bright, untouched look, o.g., never hinged, Extremely Fine, with 2010 P.S.E. certificate graded XF 90. SMQ XF 90; \$250. Estimate \$200 - 300



1159



1160

1160 ★★

1912, 2¢ carmine, S.L. watermark, coil, perf. 12 vertically (Scott 413), guide line pair, crisp, bright impression, o.g., never hinged, Extremely Fine, with 2010 P.S.E. certificate graded XF 90. SMQ XF 90; \$1,350. Estimate \$1,000 - 1,500

## 1912-1914 WASHINGTON-FRANKLIN ISSUE, SL WMK, PERF 12

1161 ★★

1912, 10¢ orange yellow, S.L. watermark, perf. 12 (Scott 416), unusually bright appearance, o.g., never hinged, Extremely Fine to Superb, with 2007 P.S.E. certificate graded XF-SUP 95. SMQ XF-SUP 95; \$550. Estimate \$400 - 600



1161





1162

1162 ★★

1914, 12¢ claret brown, S.L. watermark, perf. 12 (Scott 417), impeccably fresh look, o.g., never hinged, Extremely Fine to Superb, with 2021 Crowe certificate graded XF-SUP 95. SMQ XF-SUP 95; \$625. Estimate \$500 - 750

1163 ★★

1912, 15¢ gray, S.L. watermark, perf. 12 (Scott 418), clear uniform margins, o.g., never hinged, Extremely Fine to Superb, with 2005 P.S.E. certificate graded XF-SUP 95. SMQ XF-SUP 95; \$775. Estimate \$600 - 800



1163



1164

1164 ★★

1914, 20¢ ultramarine, S.L. watermark, perf. 12 (Scott 419), precise proportional frame, o.g., never hinged, Extremely Fine to Superb, with 2020 Crowe certificate graded XF-SUP 95. SMQ XF-SUP 95; \$1,550. Estimate \$1,200 - 1,800

1165 ★★

1914, 30¢ orange red, S.L. watermark, perf. 12 (Scott 420), sparkingly rich impression, o.g., never hinged, Extremely Fine to Superb, with 2015 P.S.E. certificate graded XF-SUP 95. SMQ XF-SUP 95; \$1,250. Estimate \$1,000 - 1,500



1165



1166

1166 ★★

1914, 50¢ violet, S.L. watermark, perf. 12 (Scott 421), radiant mint presentation, o.g., never hinged, Extremely Fine, with 2006 P.S.E. certificate graded XF 90. SMQ XF 90; \$1,600. Estimate \$1,200 - 1,800

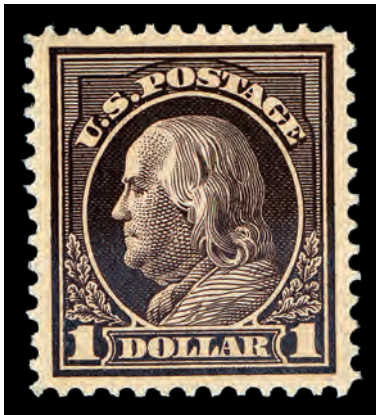
### 1912 WASHINGTON-FRANKLIN ISSUE, DL WMK, PERF 12

1167 ★★

1912, 50¢ violet, D.L. watermark, perf. 12 (Scott 422), sparkling, printer-fresh look, o.g., never hinged, Extremely Fine, with 2005 P.S.E. certificate graded XF 90 and 1998 P.F. certificate. SMQ XF 90; \$1,150. Estimate \$1,000 - 1,500



1167



1168

1168 ★

1912, \$1 violet brown, D.L. watermark, perf. 12 (Scott 423), symmetrically centered impression, o.g., previously hinged, Superb, with 2024 P.S.E. certificate graded SUP 98 and 1995 P.F. certificate. SMQ SUP 98; \$1,750. Estimate \$1,500 - 2,000

### 1913-1915 WASHINGTON-FRANKLIN ISSUE, SL WMK, PERF 10

1169 ★★

1914, 4¢ brown, S.L. watermark, perf. 10 (Scott 427), intensely bold strike, o.g., never hinged, Extremely Fine to Superb, with 2008 P.S.E. certificate graded XF-SUP 95. SMQ XF-SUP 95; \$650. Estimate \$500 - 750



1169





1170

1170 ★★

1914, 6¢ red orange, S.L. watermark, perf. 10 (Scott 429), immaculately preserved freshness, o.g., never hinged, Extremely Fine, with 2010 P.S.E. certificate graded XF 90. SMQ XF 90; \$250. Estimate \$200 - 300

1171 ★★

1914, 8¢ pale olive green, S.L. watermark, perf. 10 (Scott 431), remarkably clear impression, o.g., never hinged, Extremely Fine to Superb, with 2007 P.S.E. certificate graded XF-SUP 95J. SMQ XF-SUP 95J; \$900. Estimate \$750 - 1,000



1171



1172

1172 ★★

1914, 9¢ salmon red, S.L. watermark, perf. 10 (Scott 432), clear, bold strike, o.g., never hinged, Extremely Fine to Superb, with 2020 P.S.E. certificate graded XF-SUP 95. SMQ XF-SUP 95; \$750. Estimate \$600 - 800

1173 ★★

1914, 10¢ orange yellow, S.L. watermark, perf. 10 (Scott 433), retains original glow, o.g., never hinged, Extremely Fine, with 2004 P.S.E. certificate graded XF 90. SMQ XF 90; \$250. Estimate \$200 - 300



1173



1174

1174 ★★

1915, 11¢ dark green, S.L. watermark, perf. 10 (Scott 434), o.g., never hinged, proof-quality color and impression, Post Office fresh, Extremely Fine. Scott \$75.  
Estimate \$150 - 200

1175 ★★

1914, 15¢ gray, S.L. watermark, perf. 10 (Scott 437), sharp, brilliant tone, o.g., never hinged, Extremely Fine to Superb, with 2007 P.S.E. certificate graded XF-SUP 95. SMQ XF-SUP 95; \$1,700.  
Estimate \$1,500 - 2,000



1175



1176

1176 ★★

1914, 20¢ ultramarine, S.L. watermark, perf. 10 (Scott 438), original bright freshness, o.g., never hinged, Extremely Fine, with 2019 P.S.A.G. certificate graded XF 90. SMQ XF 90; \$900.  
Estimate \$750 - 1,000

1177 ★★

1915, 50¢ violet, S.L. watermark, perf. 10 (Scott 440), pure, untouched freshness, o.g., never hinged, Very Fine to Extremely Fine, with 2006 P.S.E. certificate graded VF-XF 85. SMQ VF-XF 85; \$1,350.  
Estimate \$1,000 - 1,500



1177





1178

## 1914 WASHINGTON-FRANKLIN ISSUE, SL WMK, PERF 10 COILS

1178 ★★

1914, 1¢ green, S.L. watermark, flat plate coil, perf. 10 vertically (Scott 443), line pair, deep vivid image, o.g., never hinged, Extremely Fine, with 2022 P.S.E. certificate graded XF 90. SMQ **XF 90**; \$625.  
Estimate \$500 - 750

1179 ★★

1914, 2¢ carmine, type I, S.L. watermark, flat plate coil, perf. 10 vertically (Scott 444), near-perfectly framed margins, o.g., never hinged, Superb, with 2024 P.S.E. certificate graded SUP 98 and 1992 P.F. certificate. SMQ **SUP 98**; \$950.  
Estimate \$750 - 1,000



1179



1180

1180 ★★

1914, 3¢ violet, type I, S.L. watermark, flat plate coil, perf. 10 vertically (Scott 445), lively, brilliant tone, o.g., never hinged, Extremely Fine, with 2024 P.S.E. certificate graded XF 90J and 1996 P.F. certificate. SMQ **XF 90J**; \$1,300.  
Estimate \$1,000 - 1,500

1181 ★★

1914, 4¢ brown, S.L. watermark, flat plate coil, perf. 10 vertically (Scott 446), line pair, deep, clean strike, o.g., never hinged, Extremely Fine, with 2018 P.S.E. certificate graded XF 90 and 2004 P.F. certificate. SMQ **XF 90**; \$2,850.  
Estimate \$2,000 - 3,000



1181



1182

1182 ★★

1914, 5¢ blue, S.L. watermark, flat plate coil, perf. 10 vertically (Scott 447), precision-aligned margins, o.g., never hinged, Superb, with 2007 P.S.E. certificate graded SUP 98. SMQ SUP 98; \$775. Estimate \$600 - 800

1183 ★★

1914, 5¢ blue, S.L. watermark, flat plate coil, perf. 10 vertically (Scott 447), line pair, brightly glowing color, o.g., never hinged, Extremely Fine to Superb, with 2021 P.F. certificate graded XF-SUP 95 and 1999 P.F. certificate. SMQ XF-SUP 95; \$1,750. Estimate \$1,500 - 2,000



1183



1184

## 1914-1916 WASHINGTON-FRANKLIN ISSUE, SL WMK, PERF 10 ROTARY COILS

1184 ★★

1916, 2¢ carmine, type III, S.L. watermark, rotary press coil, perf. 10 horizontally (Scott 450), line pair, strong, glowing appeal, o.g., never hinged, Very Fine, with 2019 P.S.E. certificate. Scott \$550. Estimate \$300 - 400

1185 ★★

1914, 1¢ green, S.L. watermark, rotary press coil, perf. 10 vertically (Scott 452), intense crisp brightness, o.g., never hinged, Extremely Fine to Superb, with 2020 P.S.E. certificate graded XF-SUP 95. SMQ XF-SUP 95; \$100. Estimate \$100 - 150



1185





1186

1186 ★★

1914, 2¢ carmine rose, type I, S.L. watermark, rotary press coil, perf. 10 vertically (Scott 453), line pair, clean, untouched state, o.g., never hinged, Very Fine to Extremely Fine, with 2022 P.S.A.G. certificate graded VF-XF 85 and 1989 P.F. certificate. SMQ VF-XF 85; \$1,900. Estimate \$1,500 - 2,000

1187 ★★

1915, 2¢ red, type II, S.L. watermark, rotary press coil, perf. 10 vertically (Scott 454), line pair, intense lively surface, o.g., never hinged, Extremely Fine, with 2008 P.S.E. and 2019 P.F. certificates, both graded XF 90. SMQ XF 90; \$1,600. Estimate \$1,500 - 2,000



1187



1188

1188 ★★

1915, 2¢ carmine, type III, S.L. watermark, rotary press coil, perf. 10 vertically (Scott 455), line pair, nicely proportioned frame, o.g., never hinged, Extremely Fine, with 2003 P.S.E. certificate graded XF 90. SMQ XF 90; \$225. Estimate \$200 - 300

1189 ★★

1916, 3¢ violet, type I, S.L. watermark, rotary press coil, perf. 10 vertically (Scott 456), uniformly balanced stamp, o.g., never hinged, Superb, with 2010 P.S.E. certificate graded SUP 98 and 1981 P.F. certificate. SMQ SUP 98; \$3,350. Estimate \$3,000 - 4,000



1189



1190

1190 ★★

1916, 4¢ brown, S.L. watermark, horizontal rotary press coil (Scott 457), mathematically aligned margins, o.g., never hinged, Superb, with 2013 P.S.E. certificate graded GEM 100. SMQ **Gem 100**; \$975. Estimate \$750 - 1,000

### 1914 WASHINGTON-FRANKLIN ISSUE, SL WMK, IMPERF, ROTARY COIL

1191 ★★

1914, 2¢ carmine, type I, S.L. watermark, imperf. horizontal coil (Scott 459), distinct vivid impression, o.g., never hinged, Extremely Fine to Superb, single from 2005 P.S.E. certificate for pair, graded XF-SUP 95. SMQ **XF-SUP 95**; \$500 for single. Estimate \$400 - 600



1191



1192

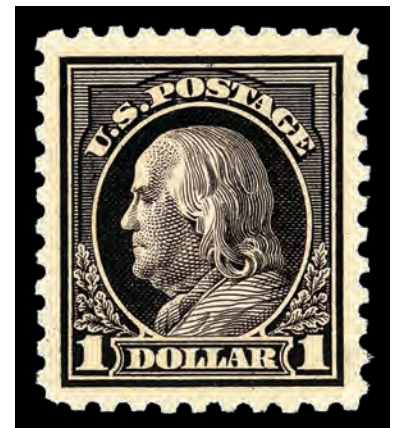
1192 ★★

1914, 2¢ carmine, type I, S.L. watermark, imperf. horizontal coil (Scott 459), line pair, strong impression quality, o.g., never hinged, Extremely Fine to Superb, with 2007 P.S.E. certificate graded XF-SUP 95. SMQ **XF-SUP 95**; \$3,500. Estimate \$3,000 - 4,000

### 1915 WASHINGTON-FRANKLIN ISSUE, DL WMK, PERF 10

1193 ★

1915, \$1 violet black, D.L. watermark, perf. 10 (Scott 460), fresh lively brightness, o.g., previously hinged, Extremely Fine to Superb, with 2024 P.S.E. certificate graded XF-SUP 95J and 1992 P.F. certificate. SMQ **XF-SUP 95J**; \$1,600. Estimate \$1,500 - 2,000



1193





1194

## 1915 WASHINGTON-FRANKLIN ISSUE, SL WMK, PERF 11

1194 ★★

1915, 2¢ pale carmine red, type I, S.L. watermark, perf. 11 (Scott 461), bold, unblemished surface, o.g., never hinged, Extremely Fine, with 2005 P.S.E. certificate graded XF 90. SMQ **XF 90**; \$700. Estimate \$600 - 800

## 1916-1917 WASHINGTON-FRANKLIN ISSUE, FLAT PLATE, UNWMK, PERF 10

1195 ★★

1916, 2¢ carmine, type I, unwatermarked, perf. 10 (Scott 463), single with plate number, clean vivid engraving, o.g., never hinged, Extremely Fine to Superb, with 2008 P.S.E. certificate graded XF-SUP 95. SMQ **XF-SUP 95**; \$150. Estimate \$150 - 200



1195



1196

1196 ★★

1916, 3¢ violet, type I, unwatermarked, perf. 10 (Scott 464), single with plate number, striking mint brightness, o.g., never hinged, Very Fine to Extremely Fine, with 2007 P.S.E. certificate graded VF-XF 85J. SMQ **VF-XF 85J**; \$240. Estimate \$200 - 300

1197 ★★

1916, 5¢ blue, unwatermarked, perf. 10 (Scott 466), strikingly vivid image, o.g., never hinged, Extremely Fine, with 2006 P.S.E. certificate graded XF 90. SMQ **XF 90**; \$400. Estimate \$350 - 500



1197



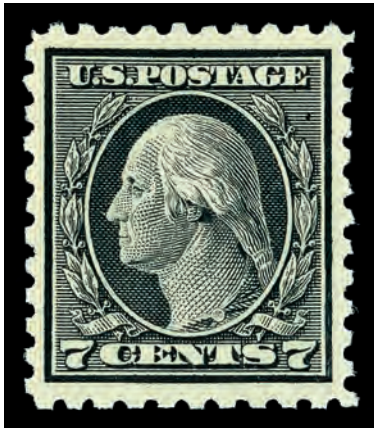
1198

1198 ★★

1916, 5¢ carmine color error, unwatermarked, perf. 10 (Scott 467), mathematically precise centering with portions of adjoining stamps all around, o.g., never hinged, Superb, with 2007 P.S.E. certificate graded SUP 98. SMQ **SUP 98**; \$12,000. Estimate \$10,000 - 15,000

(photo on front cover)





1199

1199 ★★

1916, 7¢ black, unwatermarked, perf. 10 (Scott 469), vivid ink impression, o.g., never hinged, Extremely Fine, with 2021 Crowe certificate graded XF 90. SMQ XF 90; \$550. Estimate \$400 - 600

1200 ★★

1916, 8¢ olive green, unwatermarked, perf. 10 (Scott 470), forceful engraved detail, o.g., never hinged, Extremely Fine to Superb, with 2010 P.F. certificate graded XF-SUP 95. SMQ XF-SUP 95; \$800. Estimate \$750 - 1,000



1200



1201

1201 ★★

1916, 9¢ salmon red, unwatermarked, perf. 10 (Scott 471), dazzling vibrant hue, o.g., never hinged, Extremely Fine, with 2006 P.S.E. certificate graded XF 90. SMQ XF 90; \$250. Estimate \$200 - 300

1202 ★★

1916, 15¢ gray, unwatermarked, perf. 10 (Scott 475), radiant bright condition, o.g., never hinged, Very Fine to Extremely Fine, with 2008 P.S.E. certificate graded VF-XF 85. SMQ VF-XF 85; \$525. Estimate \$400 - 600



1202



1203

1203 ★★

1916, 20¢ light ultramarine, unwatermarked, perf. 10 (Scott 476), well-placed image, o.g., never hinged, Extremely Fine, with 2007 P.S.E. certificate graded XF 90. SMQ XF 90; \$1,000. Estimate \$800 - 1,200

1204 ★★

1917, 50¢ light violet, unwatermarked, perf. 10 (Scott 477), fresh, glowing example, o.g., never hinged, Extremely Fine, with 2006 P.F. certificate graded XF 90. SMQ XF 90; \$3,150. Estimate \$3,000 - 4,000



1204



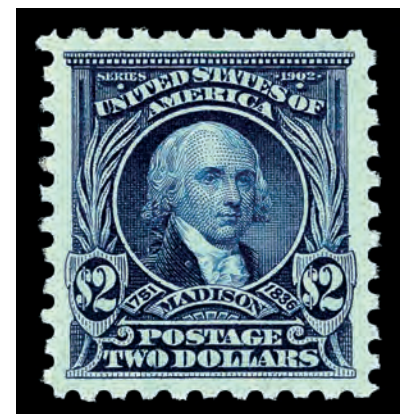
1205

1205 ★★

1916, \$1 violet black, unwatermarked, perf. 10 (Scott 478), lively Post Office fresh glow, o.g., never hinged, Extremely Fine, with 2006 P.S.E. and 2006 P.F. certificates, both graded XF 90. SMQ XF 90; \$2,350. Estimate \$2,000 - 3,000

1206 ★★

1917, \$2 dark blue, perf. 10 (Scott 479), clear, strong brightness, o.g., never hinged, Extremely Fine to Superb, with 2007 P.S.E. certificate graded XF-SUP 95 and 1998 P.F. certificate. SMQ XF-SUP 95; \$1,500. Estimate \$1,200 - 1,800



1206





1207

1207 ★★

1917, \$5 light green, perf. 10 (Scott 480), crisp, glowing image, o.g., never hinged, Extremely Fine to Superb, with 2020 Crowe certificate graded XF-SUP 95. SMQ XF-SUP 95; \$1,100. Estimate \$800 - 1,200

## 1916-1922 WASHINGTON-FRANKLIN ISSUE, ROTARY PLATE, UNWMK, PERF 10 COILS

1208 ★★

1916, 2¢ carmine, type II, unwatermarked, rotary press coil, perf. 10 horizontally (Scott 487), line pair, strong luminous tone, o.g., never hinged, Very Fine, with 1999 P.F. certificate. Scott \$275. Estimate \$150 - 200



1208



1209

1209 ★★

1919, 2¢ carmine, type III, unwatermarked, rotary press coil, perf. 10 horizontally (Scott 488), joint line pair, o.g., never hinged, gorgeous color and exceptional centering, Extremely Fine, with 1995 and 2000 P.F. certificates. Scott \$90. Estimate \$150 - 200

1210 ★★

1917, 3¢ violet, type I, unwatermarked, rotary press coil, perf. 10 horizontally (Scott 489), line pair, unspoiled vibrant example, o.g., never hinged, Extremely Fine, with 2009 P.S.E. certificate graded XF 90. SMQ XF 90; \$210. Estimate \$200 - 300



1210



1211

1211 ★★

1916, 2¢ carmine, type III, unwatermarked, rotary press coil, perf. 10 vertically (Scott 492), line pair, strikingly balanced, o.g., never hinged, Very Fine to Extremely Fine, with 2022 P.F. certificate graded VF-XF 85. SMQ VF-XF 85; \$135. Estimate \$100 - 150

1212 ★★

1917, 3¢ violet, type I, unwatermarked, rotary press coil, perf. 10 vertically (Scott 493), line pair, sharp, lively hue, o.g., never hinged, Extremely Fine, with 2013 P.S.E. certificate graded XF 90. SMQ XF 90; \$400. Estimate \$350 - 500



1212



1213

### 1917-1919 WASHINGTON-FRANKLIN ISSUE, FLAT PLATE, UNWMK, PERF 11

1213 ★★

1917, 2¢ deep rose, type Ia, perf. 11 (Scott 500), bright color radiance, o.g., never hinged, Extremely Fine, with 2021 P.S.E. certificate graded XF 90. SMQ XF 90; \$1,100. Estimate \$800 - 1,200

1214 ★★

1917, 5¢ rose color error, perf. 11 (Scott 505), bold vivid color, o.g., never hinged, Extremely Fine, with 2008 P.S.E. certificate graded XF 90. SMQ XF 90; \$1,050. Estimate \$800 - 1,200



1214





1215

1215 ★★

1917, 20¢ light ultramarine, perf. 11 (Scott 515), clean, radiant state, o.g., never hinged, Extremely Fine to Superb, with 2004 P.S.E. certificate graded XF-SUP 95. SMQ XF-SUP 95; \$500. Estimate \$400 - 600

1216 ★★

1917, 50¢ red violet, perf. 11 (Scott 517), strikingly accurate centering, o.g., never hinged, Extremely Fine to Superb, with 2007 P.S.E. certificate graded XF-SUP 95 and 2001 P.F. certificate. SMQ XF-SUP 95; \$500. Estimate \$400 - 600



1216



1217

### 1917 WASHINGTON-FRANKLIN ISSUE, FLAT PLATE, DL WMK, PERF 11

1217 ★★

1917, 2¢ carmine, D.L. watermark, perf. 11 (Scott 519), well-defined bold design, o.g., never hinged, Extremely Fine to Superb, with 2005 P.S.E. certificate graded XF-SUP 95. SMQ XF-SUP 95; \$3,400. Estimate \$3,000 - 4,000

Kelleher offers **telephone bidding** during the auction for clients on a priority basis, so please call us to arrange for phone bidding as soon as possible.

1918 WASHINGTON-FRANKLIN ISSUE, FLAT PLATE, PERF 11



1218

1218 ★★

1918, \$2 orange red & black (Scott 523), strongly defined engraving, o.g., never hinged, Superb, with 2012 P.S.E. certificate graded SUP 98. SMQ SUP 98; \$5,650. Estimate \$5,000 - 6,500

(photo on front cover)





1219

1219 ★★

1918, \$5 deep green & black (Scott 524), fresh, well-preserved example, o.g., never hinged, Very Fine, with 2025 P.S.E. certificate graded VF 80. SMQ VF 80; \$275. Estimate \$200 - 300

### 1918-1920 WASHINGTON-FRANKLIN ISSUE, OFFSET, PERF 11



1220

1220 ★★

1918-20, Washington, offset printing, 1¢ to 3¢ complete (Scott 525-530), set of 8, o.g., never hinged, bright colors on crisp paper with even perfs all around, beautifully centered, Very Fine to Extremely Fine. Scott \$320. Estimate \$150 - 250

Kelleher offers **telephone bidding** during the auction for clients on a priority basis, so please call us to arrange for phone bidding as soon as possible.



1918-1920 WASHINGTON-FRANKLIN ISSUE, OFFSET, IMPERF



1221

1221 ★★

1918-20, Washington, offset printing, imperf. (Scott 531-534A, 535), #534A with part arrow in wide left selvage, o.g., never hinged, a Post Office fresh group in Extremely Fine condition, #533 with 2004 P.F. certificate. Scott \$398.  
Estimate \$250 - 350



1222

1222 ★★

1918, 2¢ carmine, type VII, offset printing, imperf. (Scott 534B), bottom plate number 12778 single, o.g., never hinged, lovely color, as fresh as the day it was printed, Extremely Fine, with 1996 P.F. certificate for block of 4. Scott \$3,750.  
Estimate \$3,000 - 4,000

This is a rare never hinged plate no. single as most of the Type VII stamps were used by private vending and affixing machine companies.





1223

## 1921 WASHINGTON-FRANKLIN ISSUE, ROTARY COIL WASTE, PERF 11

1223 ★★

1921, 1¢ green, rotary press coil waste, perf. 11 (Scott 545), crisp and radiant, o.g., never hinged, Extremely Fine, with 2024 P.S.E. certificate graded XF 90. SMQ XF 90; \$850. Estimate \$750 - 1,000

1224 ★★

1921, 2¢ carmine rose, type III, rotary press coil waste, perf. 11 (Scott 546), single with plate number, radiant glowing look, o.g., never hinged, Extremely Fine, with 2020 Crowe certificate graded XF 90. SMQ XF 90; \$525. Estimate \$400 - 600



1224



1225

## 1920 WASHINGTON-FRANKLIN ISSUE, FLAT PLATE, PERF 11

1225 ★★

1920, \$2 carmine & black (Scott 547), plate number 8179 in black single with wide top selvage, stamp o.g., never hinged, lightly hinged in selvage, rich colors, well-centered within nicely balanced margins, Extremely Fine. Scott \$260. Estimate \$250 - 350

## 1922-1929 FOURTH BUREAU ISSUE

1226 ★★

1923, 1¢ Franklin, rotary press coil waste, perf. 11 x 10 (Scott 578), accurate aligned example, o.g., never hinged, Extremely Fine, with 2006 P.S.E. certificate graded XF 90. SMQ XF 90; \$400. Estimate \$350 - 500



1226



1227

1227 ★★

1923, 2¢ Washington, rotary press coil waste, perf. 11 (Scott 595), crisp vivid hue, o.g., never hinged, Extremely Fine, with 2008 P.S.E. certificate graded XF 90. SMQ XF 90; \$750. Estimate \$600 - 800



1228

1228 ★★

1926, 2¢ Washington, type I, carmine lake color error, rotary press printing (Scott 634b), single with plate number, bold striking impression, o.g., never hinged, Extremely Fine to Superb, with 2015 P.S.E. certificate graded XF-SUP 95J. SMQ XF-SUP 95J; \$1,200. Estimate \$1,000 - 1,500

## 1925-1929 ISSUES

## 1938-PRESENT ISSUES

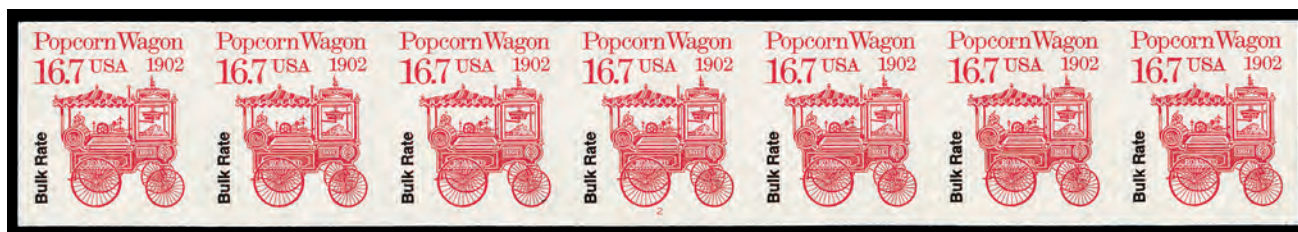


1229

1229 ★★

1981, 18¢ Flag & Lighthouse, horizontal coil, plate #5 strip of 5 (Scott 1891), pristine never hinged o.g., bright colors and intact perfs, as fresh as the day it was sold at the post office in 1981, Extremely Fine. Scott \$1,900. Estimate \$1,000 - 1,500

(photo on front cover)



1230

1230 ★★

1988, Transportation Issue, 16.7¢ Popcorn Wagon, imperf. plate #2 strip of 7 (Scott 2261a), o.g., never hinged, Superb in every respect, very few plate no. strips exist, with 2022 P.S.E. certificate. Scott \$900 as 3 pairs. Estimate \$2,000 - 3,000

(photo on back cover)





## THE DANIEL METLAY SALE OF QUALITY UNITED STATES STAMPS



1231

1231 ★★

2007, 26¢ Florida Panther, imperf. coil plate #S1111 strip of 5, die cutting omitted (Scott 4141a), and vertical yellow line of printer's ink between first and second stamps, self-adhesive, never hinged, Very Fine, with 2021 P.S.E. certificate. Scott \$700 for 2 pairs. Estimate \$1,500 - 2,000

(photo on back cover)

### AIRMAIL



1232

1232 ★★

Airmail, 1930, Graf Zeppelin complete (Scott C13-C15), set of 3, plate number singles in wide top selvage, o.g., never hinged, lovely colors that pop off the page, #C13 & C14 Very Fine and #C15 Extremely Fine, with 2015 P.S.E. certificates. Scott \$1,675. Estimate \$1,500 - 2,000

(photo on back cover)

## THE END OF THE SALE

**NOTE:** Limits of less than \$200 are respectfully declined.







# CONDITIONS OF SALE - Public Auction

THE PLACING OF A BID SHALL CONSTITUTE ACCEPTANCE OF THESE CONDITIONS OF SALE BETWEEN BIDDER AND DANIEL F. KELLEHER AUCTIONS, LLC ("KELLEHER")

## BIDDING

1. Unless announced otherwise by the auctioneer, all bids are per lot, as numbered in the printed Catalogue. Kelleher, as agent for the consignor or vendor, shall regulate the bidding and shall determine the manner in which the bidding shall be conducted. Kelleher reserves the right to withdraw any lot prior to sale (without liability to any potential purchaser or agent), to re-offer any withdrawn lot, to divide a lot or to group two or more lots belonging to the same consignor or vendor, and to refuse any bid believed not made in good faith. Estimates of sales prices contained in the printed Catalogue reflect the best judgment of Kelleher and are not minimum or upset prices.

2. (a) Bids shall be made in the steps set forth on the bidding page for increments. (b) The highest bid acknowledged by the auctioneer shall prevail. Should a dispute arise between bidders (including a dispute between a floor or internet bidder and the auctioneer acting on behalf of a mail bidder, consignor or vendor, the auctioneer alone shall determine who the successful bidder is and whether to reoffer the lot in dispute. Should a dispute arise after the sale, the auctioneer's sale records shall be conclusive. On all lots sold, a commission of 20% \* on the hammer price is payable by the buyer to the auctioneer together with any sales and use tax or customs duties. (c) Lots may be re-opened as necessary to accommodate connectivity issues or incorrect bids.

3. (a) The auctioneer reserves the right to bid on behalf of clients (and consignors or vendors) but shall not be liable for errors and omissions in executing instructions to bid, however received, and whether such errors or omissions be those of the bidder or agent or those of the auctioneer.

(b) Lots are offered subject to a reserve price. The auctioneer will implement such reserve price by bidding on behalf of the consignor/ vendor. (c) It may also be assumed that all consignors have been advanced monies against the sale of their consigned material and Kelleher therefore has a security interest in the consigned material over and above the normal auction commission.

(d) Purchases made by a consignor or vendor or his agent on his own lots shall be considered as a sale subject to commissions and sales tax as applicable.

(e) Agents are responsible for the payment of the purchase price for all purchases made on behalf of their clients, unless other arrangements with the auctioneer have been confirmed in writing prior to the auction.

## PAYMENT FOR PURCHASES

4. (a) Payment for lots, including those on which opinions are desired (Extensions), shall be as follows:

(b) Floor Bidders. Payment of the purchase price, or such part thereof as Kelleher shall require, shall be made by the purchaser in cash, bank or certified check, credit card, PayPal or in such other manner as Kelleher may determine. The name and address of the purchaser of each lot shall be given to the auctioneer immediately following the sale of such lot.

(c) Mail/Internet/FAX/Website Bidders. A successful mail bidder will be notified of lots purchased. Before Kelleher will send such lots, payment in full must be received by Kelleher within three (3) business days of receipt of the aforesaid notification by the mail bidder. However, a purchaser known to Kelleher at its option may have purchases delivered or forwarded for immediate payment (by a dollar draft, ACH or wire transfer from a U.S. bank in the case of overseas purchasers). Mailed delivery will be to the address on the bid sheet and proof by Kelleher of receipt of a sending at the advised address shall constitute delivery. This includes disputes for payments made via PayPal and/or credit card. Buyer acknowledges that he/she waives their right to file a dispute in such cases with PayPal or their Credit Card Company. All charges for handling, delivery and insurance obtained by Kelleher on behalf of the purchaser shall be added to the purchase price; a minimum charge of \$20.00 will be made for same.

5. Title shall not pass to the purchaser until full payment has been received by Kelleher as agents for the consignor or vendor.

6. (a) Purchasers agree to pay for lots as specified in Condition of Sale 4 (or as the same may be modified by Condition of Sale 8), and no credit is extended; a late payment charge of 2% per month or fraction thereof shall be added if payment is not made in accordance with the aforesaid conditions.

(b) In the event that a bidder shall fail to comply with these Conditions of Sale ("Non-Complying Bidder"), then, as to any lot with respect to which such failure to comply occurs, Kelleher, may, in its sole discretion, re-offer such lot during the same auction or at an auction at a later time, or by private treaty sale at such time as Kelleher Auctions, in its sole discretion, deems appropriate and the Non-Complying Bidder shall be liable for the deficiency, if any, between the hammer price and the net proceeds of a sale to a subsequent purchaser, whether at auction or by private treaty, as well as for all costs and expenses of both sales, including all other charges due thereunder, including commissions with respect to both sales, whether payable to Kelleher or to a third party and all incidental damages. It shall be in Kelleher's sole discretion to determine whether to re-offer the lot theretofore hammered-down to a Non-Complying Bidder at the same auction, or by private treaty in due course, or at a subsequent auction conducted by Kelleher. In no event shall any surplus arising from the sale of a re-offered lot be payable to a Non-Complying Bidder.

(c) A defaulting purchaser shall be deemed to have granted Kelleher a security interest in property in Kelleher's possession owned by such purchaser. Kelleher shall have all of the rights afforded a purchase money secured party under the Connecticut Uniform Commercial Code (UCC) with respect to such property and may apply against such obligations all monies held or received by it for the account of, or due from Kelleher to such purchaser. Kelleher is authorized to file a Financing Statement in order to perfect its rights as a secured party.

(d) If Kelleher takes any legal steps to secure payment of a delinquent account, the defaulting purchaser shall be liable for all legal and other expenses incurred by Kelleher to secure such payment, including but not limited to a reasonable allowance for attorneys' fees. For purposes of this paragraph, the term legal steps shall be deemed to include any and all consultation by Kelleher with its attorneys with respect to all matters arising out of a delinquent account.

(e) Unless otherwise acceptable to Kelleher, payment is to be made only in the form of cash, bank check or certified check, personal check (which must clear prior to delivery of lots), credit card (AMEX, Visa, MasterCard and Discover), PayPal or a bank ACH or wire transfer. Payments made by credit card are accepted as a courtesy without surcharge.

## WIRING INSTRUCTIONS:

Please contact us for our wiring instructions.

## EXHIBITION AND INSPECTION OF LOTS; QUALITY AND AUTHENTICITY

7. (a) See viewing schedule for on-premises viewing and please note that we are a certified State of CT, COVID-19 compliant business. As the guidance and rules change, please refer to the CT.GOV

or CDC.GOV websites. Ample opportunity is given for on premises inspection prior to the auction date, by appointment only, and upon written request and at Kelleher's discretion. Live video viewing is also available, please contact our offices to arrange same, at least one week prior to the sale date.

(b) Each lot is sold as genuine and correctly described, based on individual description as modified by any specific notations in this Catalogue or as announced at the time of sale.

(c) Quality. Any lot which a purchaser considers to be incorrectly described and was not examined by the bidder or his agent prior to the sale, may be returned to Kelleher within two weeks of its receipt by such purchaser ("Returning Purchaser"), provided, however, that the same is received by Kelleher within four weeks of the date of the auction and in its original packaging; however, Kelleher may, in its discretion, refuse acceptance of such returned lot. If an opinion of a mutually acceptable authority is desired (Extension), the period of time within which a lot must be received by Kelleher will be extended in accordance with Condition of Sale 7(g). In the event that a dispute cannot be resolved by reference to a mutually acceptable authority, and Kelleher thereupon undertakes to re-offer the lot with a description identical to the description disputed, the Returning Purchaser shall be liable for the deficiency, if any, between the proceeds of the sale to the Returning Purchaser and the proceeds of a sale to a subsequent purchaser, as well as for all costs and expenses of the re-sale, including commission, and all incidental damages. Any lot, the description of which is disputed, must be returned intact and in the original packaging and in the condition received (unaltered) by the purchaser. The following lots are not returnable except at the discretion of Kelleher: (i) lots from purchasers who attended the exhibition of the lots; (ii) lots examined by postal viewers; (iii) lots on account of their appearance, if they are illustrated in this Catalogue or online; (iv) lots described as having repairs, defects or faults for any reason. (v) lots containing more than ten (10) items. (d) Authenticity. Any lot which is declared other than genuine by a mutually recognized authority is returnable, provided such lot is received by Kelleher within four weeks of the date of the auction. Proof that a mutually acceptable authority declines to express an opinion is not grounds for the return of a lot. (e) Expenses incurred by a purchaser in the submission and the return of a lot under Conditions of Sale 7 is not subject to refund. (f) Numerical grading is subjective and is based upon the condition of each issue. Lots may not be returned if a third party grades a stamp at lower than our grade. (g) Lots with existing certificates from the Philatelic Foundation (PF) or Professional Stamp Experts (PSE), British Philatelic Association (BPA), Royal Philatelic Society (London) (RPSL) and Australia (RPSA), Vincent Graves Greene Foundation (VGG) or any other expertizing authority as recognized by the International Association of Philatelic Experts (AIEP), for items within their specialty and dated within the last seven (7) years from the date of sale, will be offered and sold on an "as is" basis and as so stated on the certificate. Such lots may not be returned for any reason, including but not limited to a contrary verbal or written opinion or certificate.

## SALES TAX/CUSTOMS DUTIES

8. Unless presentation of satisfactory proof that it is exempted by law, a purchaser shall pay to Kelleher the compensating Sales and/or use taxes of any State claiming jurisdiction, which is being collected, reported and remitted to said State, based upon the Supreme Court Wayfair legislation enacted June, 2018. Buyers outside the U.S. are responsible for all customs duties. A purchaser shall indemnify Kelleher and hold it harmless of and from any claims of any jurisdiction for sales taxes relating to the purchase of articles at the auction, whenever the same may arise.

## APPLICABLE LAW, JURISDICTION, ETC.

9. All matters arising out of this auction shall be governed by the laws of the State of Connecticut without giving effect to the choice of law principles thereof.

## ARBITRATION

10. Any controversy or claim arising out of or relating to this auction shall be settled by arbitration in the City of New York, State of New York in accordance with the Rules of the American Arbitration Association and judgment upon the award rendered by the Arbitrator or Arbitrators may be entered in any Court having jurisdiction.

## JURISDICTION AND VENUE OF ACTIONS

11. The purchaser at this auction (a) consents and submits to the jurisdiction of the Courts of the State of Connecticut and of the Courts of the United States for a judicial district within the territorial limits of the State of Connecticut for all matters arising out of this auction sale, including, without limitation, any action or proceeding instituted for the enforcement of any right, remedy, obligation and liability arising under or by reason thereof; and (b) consents and submits to the venue of such action or proceeding in the City of Danbury, County of Fairfield, State of Connecticut (or such judicial district of a Court of the United States as shall include the same, and (c) further consents that service of process in any action relating thereto may be effected by registered mail, return receipt requested address to the purchase at the address given to the auctioneer at the time of the sale.

## BIDDING STEPS

12. Bidding Steps (Increments) are as published; bids made out of increment will be reduced to the next increment. Example: \$603 bid will be reduced to \$600, etc. "Split" or "Slice" bids are not accepted.

## BIDS BY TELEPHONE

(a) Must be confirmed in writing unless waived by the auctioneer. (b) Any errors are the responsibility of the bidder. (c) No bids accepted less than 1 hour before the commencement of the sale.

## BIDS BY FAX OR EMAIL

Bids must be received at least 1 hour before sale commences — be sure to use

FAX: (203) 297-6059 or EMAIL: bids@kelleherauctions.com

## PHONE BIDDING DURING THE SALE

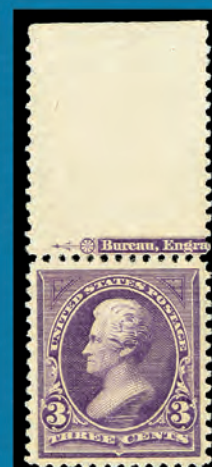
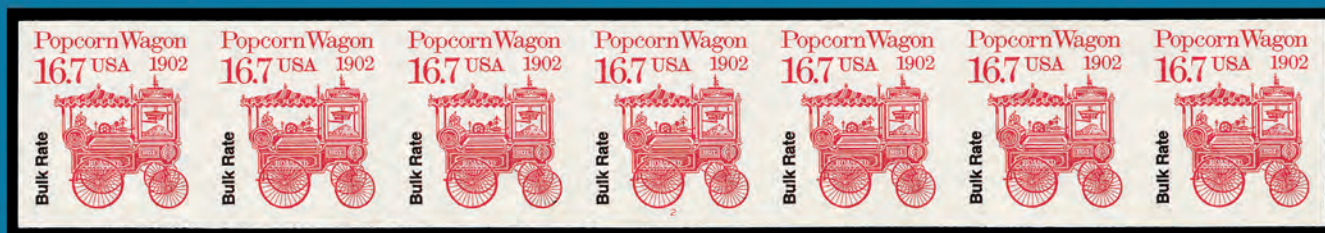
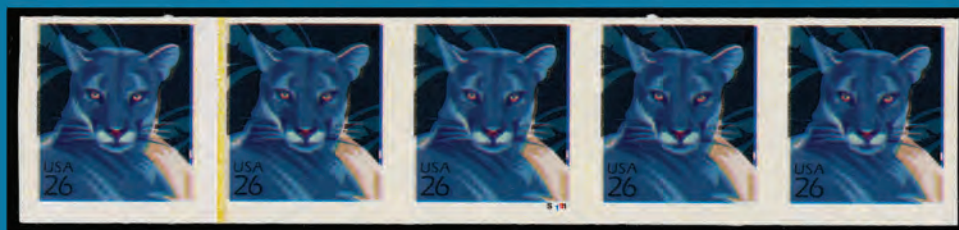
Phone bidding space is limited and available on a first-come, first served basis. The importance of reserving early cannot be overstated!

Please call us at (203) 830-2500 to reserve your phone bidding space

## STAMP AUCTION NETWORK (SAN)

Live internet bidding. To bid, you must be registered and be approved by both Stamp Auction Network and Kelleher. Please contact us for further instructions or go to [www.stampauctionnetwork.com](http://www.stampauctionnetwork.com) and find the Kelleher link.





**KELLEHER**  
**AUCTIONS**  
STAMPS | COINS | SPORTS CARDS | MEMORABILIA

22 Shelter Rock Lane, Unit 53 Danbury, CT 06810, USA  
Phone: 203.830.2500 Toll Free: 800.212.2830 Fax: 203.297.6059

[KelleherAuctions.com](http://KelleherAuctions.com)

© Copyright 2025