

Kelleher Auctions, LLC

Sale No. 829 - Public Auction Sale

To be held at our office:

22 Shelter Rock Lane, Unit 53, Danbury, Connecticut 06810

WILLIAM KINNEY "EVEREST" CANADA



December 11, 2025

Thursday, December 11, 2025 - 11:00 A.M.
Session 1 - Lots 4001 - 4415

Join Our 140th Year Celebration with a Special Referral Program!

We're excited to announce a special referral program in honor of our 140th anniversary. Refer a consignor to us, and if they use our services for a collection valued over \$5,000, you'll receive a \$140 Amazon gift card as a token of our appreciation!

LIMITED ON-SITE VIEWING BY APPOINTMENT ONLY

KELLEHER AUCTIONS, LLC

STAMPS | COINS | SPORTS CARDS | MEMORABILIA



Tel: 203.830.2500 Fax: 203.297.6059
KelleherAuctions.com





**KELLEHER
AUCTIONS**
STAMPS | COINS | SPORTS CARDS | MEMORABILIA

22 Shelter Rock Lane, Unit 53,
Danbury CT 06810
800.212.2830 - 203.830.2500
www.kelleherauctions.com



David Coogle
CO-CHAIRMAN
dcoogle@
kelleherauctions.com



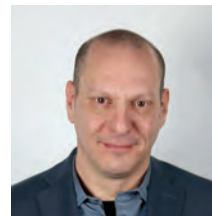
David Barber
CHIEF OPERATING OFFICER
dbarber@
kelleherauctions.com



Eric Roth
VP COLLECTIONS &
CONSIGNMENTS
eroth@
kelleherauctions.com



Bob Prager
DIR CLIENT RELATION
bprager@
kelleherauctions.com



Max Wender
CONSIGNMENT
MANAGER
mwender@
kelleherauctions.com



Larry Gibson
CO-CHAIRMAN
lgibson@
kelleherauctions.com



Richard LaSalle
PRODUCTION MANAGER
rlasalle@
kelleherauctions.com



Lindsey Zaleski
AUCTION MANAGER
lzaleski@
kelleherauctions.com



Darren Prager
COLLECTIBLES
MANAGER
dprager@
kelleherauctions.com



Bin Gu
CONTENT MANAGER
bgu@
kelleherauctions.com



Hugh Galford
SENIOR DESCRIBER
hgalford@
kelleherauctions.com



Philip Koro
DESCRIBER



Les Boisclair
EXPERT DESCRIBER



Francis O'Reilly
ACCOUNTING
foreilly@
kelleherauctions.com



Esther Depelteau
ACCOUNTING



Mary O'Hanlon
Administrative Assistant
info@
kelleherauctions.com



Raymond Corriea
IMAGING



Diante Campbell
IMAGING



Betsy Klein
IMAGING



Roger Chia
SHIPPING-FULFILLMENT
MANAGER
rchia@
kelleherauctions.com



Jesse Coachman
SHIPPING-FULFILLMENT
jcoachman@
kelleherauctions.com



James Mccray
SHIPPING-FULFILLMENT
SPECIALIST
shipping@
kelleherauctions.com

Bidders Information

Bid Live
www.stampauctionnetwork.com
For Phone Bidding call us at 203.830.2500

Bidding Increments:

Bidding shall proceed in accordance with the following schedule:

Up to \$200; increase by \$10	Over \$7,500 to \$15,000; increase by \$500
Over \$200 to \$500; increase by \$25	Over \$15,000 to \$30,000; increase by \$1,000
Over \$500 to \$1,000; increase by \$50	Over \$30,000 to \$70,000; increase by \$2,500
Over \$1,000 to \$3,000; increase by \$100	Over \$70,000 to \$130,000; increase by \$5,000
Over \$3,000 to \$7,500; increase by \$250	Over \$130,000 at discretion of auctioneer.

Symbols Used

★★	Mint Never Hinged	☒	Cover	NYFM	New York Foreign Mail
★	Mint with Gum	○	Used	TC	Trial Color Proof
(★)	Unused, No Gum/Regummed	S	Specimen	SL	Straight Line
R	Reprint	E	Essay	MS	Manuscript
P	Proof	▲	Piece		
o.g.	Original gum	▣	Block		

Gum Categories:	MINT N.H.	ORIGINAL GUM (O.G.)				NO GUM
						
	Mint Never Hinged Free from any disturbance	Lightly Hinged Faint impression of a removed hinge over a small area	Hinge Mark or Remnant Prominent hinged spot; may have part or all of the hinge remaining	Large part o.g. Approximately half or more of the gum intact	Small part o.g. Approximately less than half of the gum intact	No gum Only if issued with gum
Commonly Used Symbol:	★★	★	★	★	★	(★)

Table from the *Scott Specialized Catalogue of United States Stamps & Covers*, ©2020 Amos Media

Grading and Condition

Superb	Extraordinary item in the finest condition.
Extremely Fine (XF)	A stamp or cover of outstanding and exceptional quality.
Very Fine (VF)	Scott Catalog's standard. Stamps will present a nice, balanced appearance. Covers appear new or show only minimal wear.
Fine-Very Fine (F-VF)	Stamp and/or covers are sound. Stamps are fully margined but noticeably off-center. Covers show normal travel wear.
Fine (F)	Sound in all aspects. Perforated stamps will have the perforations clear of the design; imperforate stamps will not be cut into to any significant degree. Covers show extensive wear.
Very Good (VG)	Stamps with imperfect centering, stamps or covers with poor general appearance.

Covers

Minor imperfections are normal for 19th-century envelopes that have been postally transmitted. These include, but are not limited to, nicks, edge or flap tears, or slight reductions; folded letters will often have at least one file fold. Further, covers may have an ordinary stamp with a minor defect. Acceptable forms of conservation include light cleaning and edge mending. These conditions, even if not described, are not grounds for return.

Catalog Values

Unless otherwise noted, the currently available (2025 edition) Scott Catalogue values are quoted in U.S. dollars and rounded to the nearest dollar. Other catalogues are often used for foreign countries or specialized areas as required.

Collection Lots

Please note that **all** collection lots are sold on an "as-is" basis and therefore **not returnable for any reason**. Every attempt has been made to provide an accurate description, and extensive imaging is available on our website. Most collection lots will contain stamps and/or covers with varying imperfections or faults. We strongly suggest that all lots of interest be viewed in advance of the sale.

Please note that late payment for purchases may, at Daniel F. Kelleher's option, be considered just cause to revoke all return privileges.

KELLEHER AUCTIONS LLS

Established 1885 **Celebrating 140 Years!**



**Now Featuring Coins, Paper Money,
Sports Cards, Memorabilia and Autographs**



And of course, Stamps & Covers!



David M. Coogle
Co-Chairman

Laurence Gibson
Co-Chairman



**CONTACT US TO
CONSIGN - SELL - OR BUY**



Eric Roth
VP Consignments
and Collections
203.830.2500 ext 500
Eroth@KelleherAuctions.com



Bob Prager
Director of Client Relations
203.830.2500 ext 501
bprager@KelleherAuctions.com

22 Shelter Rock Lane • Unit 53 • Danbury, CT 06810
Phone: +203.830.2500 • Toll Free 800.212.2830 • Fax: +203.297.6059



www.kelleherauctions.com

Live Bidding - at Home From Your Computer!

Participate comfortably in Daniel F. Kelleher Auctions from your home or office - Live on the Internet. You hear the auctioneer, you see the current lots, you can bid in real time; it is fast, easy and comfortable.

**BID LIVE AT STAMP AUCTION NETWORK AT NO CHARGE
AFTER REGISTERING WITH KELLEHER AUCTIONS**
<https://www.kelleherauctions.com/how-to-bid/>

What do I need to do to be able to bid in this sale LIVE at StampAuctionNetwork?

For clients already registered with Both Kelleher and SAN

Log into StampAuctionNetwork <http://stampauctionnetwork.com/LoginNew.cfm>

I am a Current SAN client but not registered with Kelleher

Update your registration page after logging in at: http://stampauctionnetwork.com/Edit_ureg.cfm, select Kelleher from the choices underlined and press the **Update Registration** button to submit. This will send your request to the Kelleher Team for approval.

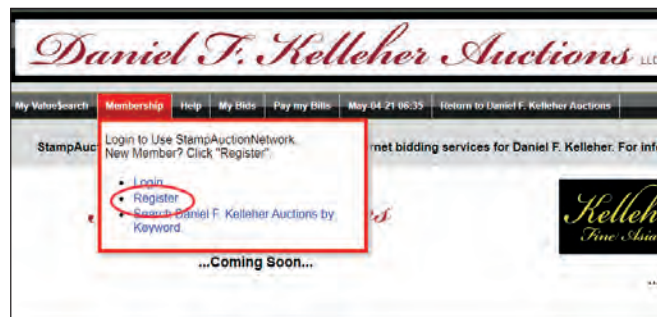
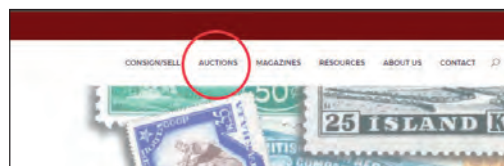
I am Currently a Kelleher Client but am NOT registered with Stamp Auction Network

You will have received an invitation to join Kelleher at SAN with a temporary username and password.
Follow the instructions or contact Kelleher.

I am a new client to Kelleher and SAN

Go to: www.kelleherauctions.com and select "AUCTIONS" from the main menu.

Under "MEMBERSHIP" select "REGISTER" complete the form (red highlighted areas mandatory) agree to the terms of sale and submit registration. A Kelleher team member will review and approve or ask for additional information.



Kelleher Auctions Powered by

**StampAuction
NETWORK**

PLEASE NOTE:

Bidder approval in advance of the sale is required

Auctions  Kelleher
Daniel F. Kelleher Auctions, LLC

Featured Biography



William Kinney

A true quality collector, Bill formed a massive holding of well over 3000 stamps, multiples, plate blocks, mint sheets and Canadian including extensive imperforate pairs and multiples, each with a certificate and mostly graded.

With an eye towards quality, we present here a selection of his Canadian collection which will be offered over the next several sales which will include his creme de la creme of high grade 98, 98J, 100 and 100Js in our Aristocrat's sale on November 20th of this year.

One of the most prestigious Insurance brokers in the industry, he would use our great hobby to relax and enjoy spending untold hours seeking out the very best. The thrill of the hunt runs deep in his veins and is shown throughout. We are both honored and excited to bring this property to market and trust that you will enjoy as much as we did in compiling it.



Table of Contents

Session 1, December 11, 2025

1851-59 Pence Issues	4001
Small Queens	4002-4011
Jubilee Issue.....	4012-4047
Later Queen Victoria Issues	4048-4101
King Edward VII Issues	4102-4119
King George V Issues.....	4120-4311
King George VI Issues	4312-4343
Queen Elizabeth II Issues.....	4344-4348

Airmail	4349-4363
Airmail Special Delivery.....	4364-4366
Airmail Semi-Official.....	4367-4369
Special Delivery	4370-4385
Registry	4386
Postage Due.....	4387-4398
War Tax.....	4399-4409
Official.....	4410-4411
Revenue.....	4412-4415



Session 1

Sale 829

Thursday, December 11, 2025

Beginning at 11 A.M.

At our offices in Danbury, CT

Lots 4001-4415



CANADA 1851-59 PENCE ISSUES



4001



4002



4003



4004

- 4001 ★** 1852, Beaver, 3d orange red, on thin oily wove paper, imperforate (Unitrade 4iv), o.g., fresh and attractive with four nice margins; very faint vertical crease, Very Fine appearance, with a 2019 P.S.E. certificate. Scott 4 var. Unitrade C\$2,500 for Very Fine (\$1,860). Estimate \$350 - 500

SMALL QUEENS

- 4002 ★★田** 1870, Small Queen, 1c yellow (Scott 35), a pretty mint block of 9, o.g., never hinged, fresh and reasonably well centered, the middle column being particularly nice; few shorter perfs on the upper right & lower right stamps, Fine to Very Fine, with a 2018 P.S.E. certificate. Scott \$1,125 as singles. Estimate \$300 - 400
- 4003 ★** 1870, Small Queen, 1c yellow, imperf (Scott 35b), o.g., large balanced margins and bright color, Very Fine, with a 2022 P.S.E. certificate graded VF 80. Scott \$425. Estimate \$250 - 350
- 4004 ★★** 1888, Small Queen, 3c bright vermilion (Scott 41), a gorgeous mint single, o.g., never hinged, nearly perfectly centered with extraordinary color, Extremely Fine, with a 2019 P.S.E. certificate. Scott \$250. Estimate \$200 - 300



4005

- 4005 ★★/★田** 1888, Small Queen, 3c bright vermilion (Scott 41), block of 20, o.g., 10 stamps are never hinged including the block of 6 at positions 6-8/11-13, bright, fresh and reasonably well centered; except for a light stain on position 10, Fine to Extremely Fine, with a 2019 P.S.E. certificate. Scott \$3,150 as singles. Estimate \$500 - 750



4006

4006 ★★/★田

1888, Small Queen, 3¢ bright vermilion (Scott 41), an exceptionally bright, fresh **block of 6**, o.g., upper left & upper right stamps lightly hinged, others never hinged, the bottom stamps are F-VF, but the top row is Very Fine to Extremely Fine, *the upper left an Extremely Fine Jumbo*, with a 2018 P.S.E. certificate. Scott \$1,130 as singles. Estimate \$350 - 500



4007

4007 (★)田

1888, Small Queen, 3¢ bright vermilion, imperf (Scott 41b), a fresh, large margined **block of 4**, without gum, Extremely Fine, with a 2018 P.S.E. certificate *graded XF 90 Mint*. Scott \$900 as pairs. Estimate \$750 - 1,000



4008

4008 (★)

1888, Small Queen, 5¢ gray, imperf (Scott 42a), an extraordinary horizontal pair, without gum as issued, incredibly fresh with generous, well balanced margins, Extremely Fine to Superb, with a 2019 P.S.E. certificate *graded XF-SUP 95*. Unitrade C\$900 (\$670). Scott \$675. Estimate \$750 - 1,000



4009

4009 (★)

1888, Small Queen, 6¢ red brown, imperf (Scott 43b), an exceptional horizontal pair, without gum as issued, wonderfully fresh with large balanced margins and extraordinary color, Extremely Fine, with a 2019 P.S.E. certificate *graded XF 90*. Scott \$550. Estimate \$600 - 800



4010

4010 (★)

1897, Small Queen, 10¢ brown red, imperf (Scott 45c), without gum, large margins, Very Fine to Extremely Fine, with a 2020 P.S.E. certificate *graded VF-XF 85*. Scott \$550. Estimate \$400 - 600



4011

4011 ★田

1897, Small Queen, 10¢ brown red, imperf (Scott 45c), block of 4, o.g. (hinge remnant at the top, bottom lightly hinged), ample to large margins, Fine to Very Fine, with a 2018 P.S.E. certificate. Scott \$1,100 as pairs. Estimate \$350 - 500



EX 4012

4012 P田

1897, Queen Victoria Jubilee, ½¢ black//8¢ dark violet, plate proof on card (Scott 50//56), blocks of 4, complete less the 6¢ value, each block marginal, with rich, deep colors and the expected razor-sharp detail, Very Fine, a lovely group. Unitrade C\$2,000 as singles (\$1,490). Estimate \$400 - 600

JUBILEE ISSUE



WILLIAM KINNEY "EVEREST" CANADA



4013

4013 P田

1897, Queen Victoria Jubilee, 20¢ vermilion, plate proof on card (Scott 59), a gorgeous lower right corner margin **block of 4**, bright and fresh, Very Fine. *Only 850 were produced.* Unitrade C\$1,500 as singles (\$1,110). Estimate \$350 - 500



4014

4014 P田

1897, Queen Victoria Jubilee, 50¢ ultramarine, plate proof on card (Scott 60), a fabulous lower left corner margin **block of 4**, wonderfully fresh and bright with large margins all around, Extremely Fine. *Only 800 were produced.* Unitrade C\$1,500 as singles (\$1,110). Estimate \$350 - 500



4015

4015 S★★

1897, Queen Victoria Jubilee, \$1 lake, overprinted "Specimen" (Scott 61S), o.g., *never hinged*, bright, fresh and nicely centered, Fine to Very Fine, with a 2020 P.S.E. certificate. Unitrade C\$800 for Fine (\$590). Estimate \$250 - 350



4016

4016 P田

1897, Queen Victoria Jubilee, \$2 dark purple, plate proof on card (Scott 62), a stunning left sheet margin **block of 4**, incredibly fresh with bottom margin and marvelous color, Extremely Fine. *Only 750 were produced.* Unitrade C\$3,200 as singles (\$2,380). Estimate \$750 - 1,000



4017

4017 S (★)

1897, Queen Victoria Jubilee, \$2 dark purple, overprinted "Specimen" (Scott 62S), without gum, wonderfully fresh and well centered, Very Fine, *unpriced in SMQ*, with a 2021 P.S.E. certificate *graded VF 80*. Unitrade C\$800 for VF, o.g. (\$590). Estimate \$400 - 600



4018

4018 S★★

1897, Queen Victoria Jubilee, \$2 dark purple (Scott 62S), o.g., *never hinged*, exceptionally fresh with fabulous color, Fine to Very Fine. Unitrade C\$800 for Fine (\$590). Estimate \$300 - 400



4019

4019 P 1897, Queen Victoria Jubilee, \$5 olive green, plate proof on card (Scott 65), a choice bottom sheet margin block of 4, wonderfully fresh with large margins and exceptional color, Extremely Fine. Only 800 were produced. Unitrade C\$3,200 as singles (\$2,380). Estimate \$800 - 1,200



4020

4020 ★★ 1897, Queen Victoria Jubilee, 1/2¢ black (Scott 50), a fresh, nicely centered strip of 3, o.g., never hinged, Very Fine, with a 2019 Greene Foundation certificate. Scott \$825 as singles. Estimate \$300 - 400



4021

4021 ★★ 1897, Queen Victoria Jubilee, 1/2¢ black (Scott 50), o.g., never hinged, fresh and well centered, Very Fine to Extremely Fine, with a 2020 P.S.E. certificate graded VF-XF 85. SMQ VF-XF 85; \$275. Scott \$275. Estimate \$200 - 300



4022

4022 ★★ 1897, Queen Victoria Jubilee, 1/2¢ black (Scott 50), o.g., never hinged, fresh and virtually perfectly centered, Extremely Fine, with a 2019 P.S.E. certificate graded XF 90. SMQ XF 90; \$375. Scott \$275. Estimate \$300 - 400



4023

4023 ★★ 1897, Queen Victoria Jubilee, 1¢ orange (Scott 51), a fabulous mint single, o.g., never hinged, fresh and mathematically centered with spectacular color, Extremely Fine to Superb, with a 2006 P.F. certificate graded XF-S 95. Unitrade C\$120 (\$90). SMQ XF-S 95; \$200. Scott \$75. Estimate \$150 - 200



4024

4024 ★★ 1897, Queen Victoria Jubilee, 1¢ orange yellow (Unitrade 51i), an extraordinary top sheet margin single with partial imprint, o.g., never hinged, bright, fresh and absolutely perfectly centered, Superb, with 2018 C.P.E.S. certificate graded "98". Scott 51 var.; \$75. SMQ \$350. Unitrade C\$120 for a Sup 98 #51 (\$90). Estimate \$200 - 300



4025

4025 ★★ 1897, Queen Victoria Jubilee, 2¢ green (Scott 52), a choice bottom sheet margin single, o.g., never hinged, bright, fresh and perfectly centered, Extremely Fine to Superb, with a 2025 P.S.E. certificate graded XF-SUP 95. Unitrade C\$150 (\$110). SMQ XF-SUP 95; \$275. Scott \$93. Estimate \$200 - 300



4026

4026 ★★ 1897, Queen Victoria Jubilee, 3¢ bright rose (Scott 53), a remarkable Jumbo, o.g., never hinged, with 2018 C.P.E.S. certificate graded "95J". Unitrade C\$120 (\$90). SMQ XF-SUP 95J; \$175 for a normal XF-Sup 95. Scott \$75. Estimate \$150 - 200



WILLIAM KINNEY “EVEREST” CANADA



4027

4027 ★★

1897, Queen Victoria Jubilee, 5¢ deep blue (Scott 54), o.g., never hinged, fresh and beautifully centered, Very Fine to Extremely Fine, with a 2019 P.S.E. certificate **graded VF-XF 85**. SMQ VF-XF 85; \$230. Scott \$200. Estimate \$150 - 200



4028

4028 ★★

1897, Queen Victoria Jubilee, 5¢ deep blue (Scott 54), a pristine bottom sheet margin single, o.g., never hinged, post office fresh and virtually perfectly centered, Extremely Fine, with a 2019 P.S.E. certificate **graded XF 90**. SMQ XF 90; \$300. Scott \$200. Estimate \$200 - 300



4029

4029 ★

1897, Queen Victoria Jubilee, 5¢ deep blue (Scott 54), an awesome mint single, post office fresh with precise, mathematical centering exceptional color, Superb, with 2017 C.P.E.S. certificate **graded “98”**. Untrade C\$300 (\$220). SMQ \$850 for Sup 98. Scott \$200. Estimate \$300 - 400



4030

4030 ★★田

1897, Queen Victoria Jubilee, 5¢ deep blue (Scott 54), a choice, exceptionally well centered **block of 4**, o.g., never hinged, Very Fine, with a 2020 P.S.E. certificate **graded VF 80**. SMQ VF 80; \$720 as singles. Scott \$800 as singles. Estimate \$350 - 500



4031

4031 ★★田

1897, Queen Victoria Jubilee, 5¢ deep blue (Scott 54), a choice, exceptionally well centered **block of 4**, o.g., never hinged, Very Fine to Extremely Fine, with a 2018 P.S.E. certificate **graded VF-XF 85**. SMQ VF-XF 85; \$920 as singles. Scott \$800 as singles. Estimate \$500 - 750



4032

4032 ★★

1897, Queen Victoria Jubilee, 6¢ yellow brown (Scott 55), an extraordinary mint single, o.g., never hinged, wonderfully fresh and mathematically centered, Extremely Fine to Superb, with a 2023 P.S.E. certificate **graded XF-SUP 95**. Untrade C\$900 (\$670). SMQ XF-SUP 95; \$1,225. Scott \$625. Estimate \$800 - 1,200



4033

4033 ★★

1897, Queen Victoria Jubilee, 8¢ dark violet (Scott 56), o.g., never hinged, fresh and beautifully centered, Very Fine to Extremely Fine, with a 2019 P.S.E. certificate **graded VF-XF 85**. SMQ VF-XF 85; \$400. Scott \$300. Estimate \$250 - 350



4034

4034 ★★

1897, Queen Victoria Jubilee, 8¢ dark violet (Scott 56), an exceptional mint example, o.g., never hinged, post office fresh and mathematically centered, Extremely Fine, with 2020 P.S.E. & 2019 Greene Foundation certificates, the former **graded XF 90**. Untrade C\$550 (\$410). SMQ XF 90; \$550. Scott \$300. Estimate \$400 - 600



4035



4036



4037



4038

- 4035 ★★** 1897, Queen Victoria Jubilee, 10¢ brown violet (Scott 57), o.g., never hinged, bright, fresh and virtually perfectly centered, Extremely Fine, with a 2020 Greene Foundation certificate. Unitrade C\$750 (\$560). Scott \$450. Estimate \$250 - 350
- 4036 ★★** 1897, Queen Victoria Jubilee, 10¢ brown violet (Scott 57), o.g., never hinged, fresh, bright and well centered, Very Fine to Extremely Fine, with a 2018 P.S.E. certificate *graded VF-XF 85*. SMQ VF-XF 85; \$400. Scott \$450. Estimate \$300 - 400
- 4037 ★★** 1897, Queen Victoria Jubilee, 10¢ brown violet (Scott 57), o.g., never hinged, bright, fresh and very well centered, Extremely Fine, with a 2019 P.S.E. certificate *graded XF 90*. SMQ XF 90; \$500. Scott \$300. Estimate \$400 - 600
- 4038 ★★** 1897, Queen Victoria Jubilee, 10¢ brown violet (Scott 57), a fabulous mint single, o.g., never hinged, post office fresh and perfectly centered, Extremely Fine to Superb, with a 2023 P.S.E. certificate *graded XF-SUP 95*. Unitrade C\$900 (\$670). SMQ XF-SUP 95; \$900. Scott \$625. Estimate \$750 - 1,000



4039



4040



4041

- 4039 ★★田** 1897, Queen Victoria Jubilee, 10¢ brown violet (Scott 57), a fresh, nicely centered mint **block of 6**, o.g., never hinged; small natural paper wrinkle affecting the two top stamp, vertical perfs a little weak, Fine to Very Fine. Scott \$2,700 as singles. Estimate \$750 - 1,000
- 4040 ★★** 1897, Queen Victoria Jubilee, 15¢ steel blue (Scott 58), o.g., never hinged, bright, fresh and virtually perfectly centered, Extremely Fine. A *beauty* with a 2018 P.S.E. certificate *graded XF 90*. SMQ XF 90; \$1,100. Scott \$750. Estimate \$750 - 1,000
- 4041 ★★** 1897, Queen Victoria Jubilee, 20¢ vermillion (Scott 59), a marvelous right sheet margin single, o.g., never hinged, incredibly fresh and beautifully centered with fabulous color, Very Fine to Extremely Fine. Unitrade C\$1,350 (\$1,000). Scott \$750. Estimate \$400 - 600



WILLIAM KINNEY “EVEREST” CANADA



4042

4042 ★★田

1897, Queen Victoria Jubilee, 50¢ ultramarine (Scott 60), a fresh, attractive **block of 12**, o.g., never hinged; light vertical creases affecting all stamps, Fine to Very Fine appearance, with a 2017 P.S.E. certificate. Scott \$9,300 as singles. Estimate \$1,500 - 2,000



4043

4043 ★★

1897, Queen Victoria Jubilee, \$1 lake (Scott 61), o.g., never hinged, bright, fresh and quite well centered, Very Fine, with a 2018 P.S.E. certificate *graded VF 80*. SMQ VF 80; \$2,000. Scott \$1,900. Estimate \$1,500 - 2,000



4044

4044 ★★

1897, Queen Victoria Jubilee, \$2 dark purple (Scott 62), o.g., never hinged, exceptionally well centered; but color a bit faded, otherwise Very Fine, with a 2010 Greene Foundation certificate. Scott \$3,750. Estimate \$500 - 750



4045

4045 ★★

1897, Queen Victoria Jubilee, \$3 yellow bister (Scott 63), a pretty left sheet margin single, o.g., never hinged, red offset, fresh and very well centered; small natural paper inclusion in the upper right margin, with 2016 Greene Foundation & 2022 P.S.E. certificates, the latter noting the inclusion. Scott \$3,750. Estimate \$2,000 - 3,000



4046

4046 ★★

1897, Queen Victoria Jubilee, \$4 purple (Scott 64), o.g., never hinged, bright, fresh and well centered with marvelous color; light corner crease at the lower right, Very Fine appearance, with a 2018 P.S.E. certificate. Scott \$3,750. Estimate \$750 - 1,000



4047

4047 ★

1897, Queen Victoria Jubilee, \$5 olive green (Scott 65), a lovely mint example, o.g., beautifully centered with deep, rich color, Very Fine to Extremely Fine, with a 2019 P.S.E. certificate *graded VF-XF 85*. SMQ **VF-XF 85**; \$1,850. Untrade 65; C\$1,850 (\$1,380). Scott \$1,400. Estimate \$1,500 - 2,000



4048

4048 ★★田

1897, Queen Victoria “Maple Leaf”, ½¢ black (Scott 66), an exceptional mint **block of 4**, o.g., never hinged, crisp and very well centered, Very Fine to Extremely Fine, with a 2018 P.S.E. certificate *graded VF-XF 85*. SMQ **VF-XF 85**; \$160 as singles. Scott \$150 as singles. Estimate \$100 - 150

LATER QUEEN VICTORIA ISSUES



4049

4050

- 4049 (★)** 1897, Queen Victoria “Maple Leaf”, ½¢, 1¢ & 2¢ “Maple Leaf,” imperf (Scott 66a-68a), a choice set of horizontal pairs, without gum as issued, large margins and bright colors, Extremely Fine, each with a 2020 P.S.E. certificate, *the 2¢ & 3¢ graded XF 90*. Scott \$1,500. Estimate \$1,000 - 1,500

- 4050 ★★** 1897, Queen Victoria “Maple Leaf”, 1¢ blue green (Scott 67), o.g., never hinged, bright, fresh and perfectly centered, Extremely Fine to Superb, with a 2018 P.S.E. certificate *graded XF-SUP 95*. Untrade C\$240 (\$180). SMQ XF-SUP 95; \$285. Scott \$140. Estimate \$200 - 300



4051

4052

4053

- 4051 ★★田** 1897, Queen Victoria “Maple Leaf”, 1¢ blue green (Scott 67), upper left corner margin **block of 4**, o.g., never hinged, post office fresh and well centered, Very Fine, with a 2019 P.S.E. certificate. Scott \$560 as singles. Estimate \$200 - 300
- 4052 ★★** 1897, Queen Victoria “Maple Leaf”, 1¢ blue green (Scott 67), two bright, fresh horizontal pairs (originally a block), o.g., never hinged, Fine to Very Fine, with a 2018 P.S.E. certificate as a block. Scott \$560 as singles. Estimate \$200 - 300
- 4053 ★★** 1897, Queen Victoria “Maple Leaf”, 1¢ blue green (Scott 67), a choice top **Plate No. 3 strip of 4**, o.g., never hinged, bright, fresh and beautifully centered, Extremely Fine, with a 2018 P.S.E. certificate *graded XF 90*. SMQ **XF 90**; \$600 as singles. Scott \$560 as singles. Estimate \$350 - 500



4054

- 4054 ★★田** 1897, Queen Victoria “Maple Leaf”, 2¢ purple (Scott 68), lower left corner sheet margin **block of 4**, o.g., never hinged, bright, fresh and well centered; small thin in bottom selvage only, stamps are Very Fine to Extremely Fine, with a clear 2021 Greene Foundation certificate. Scott \$500 as singles. Estimate \$250 - 350



WILLIAM KINNEY "EVEREST" CANADA



4055

4055 (★)

1897, Queen Victoria "Maple Leaf", 2¢ purple, imperf (Scott 68a), a gorgeous horizontal pair, without gum as issued, rich color and generous, perfectly balanced margins, Extremely Fine to Superb, *Unpriced in SMQ*, with a 2020 P.S.E. certificate *graded XF-SUP 95*. Unitrade C\$600 (\$450). Scott \$500. Estimate \$500 - 750



4056

4056 ★★

1897, Queen Victoria "Maple Leaf", 3¢ carmine (Scott 69), a stupendous *Jumbo*, o.g., never hinged, wonderfully fresh and mathematically centered within *huge*, perfectly balanced margins, Superb. *Truly awesome*, with a 2023 P.S.E. certificate *graded SUP 98 J*. Scott \$250. Unitrade C\$375 (\$280). SMQ SUP 98. SMQ \$475 for a normal Sup 95. Estimate \$750 - 1,000



4057

4057 ★★田

1897, Queen Victoria "Maple Leaf", 3¢ carmine (Scott 69), a fresh, bright mint **block of 4**, o.g., never hinged, well centered with bright color, Very Fine, with a 2018 P.S.E. certificate. Scott \$1,000 as singles. Estimate \$400 - 600



4058

4058 ★★

1897, Queen Victoria "Maple Leaf", 5¢ dark blue, on bluish paper (Scott 70), o.g., never hinged, wonderfully fresh and beautifully centered with exceptionally deep color, Extremely Fine. *A little Gem* with a 2021 Gratton certificate. Unitrade C\$900 (\$670). Scott \$500. Estimate \$400 - 600



4059

4059 (★)

1897, Queen Victoria "Maple Leaf", 5¢ dark blue on bluish, imperf (Scott 70a), without gum as issued, large margins and bright color, Very Fine, with a 2020 P.S.E. certificate. Scott \$525. Estimate \$350 - 500



4060

4060 ★★

1897, Queen Victoria "Maple Leaf", 6¢ brown (Scott 71), a lovely little Gem, o.g., never hinged, wonderfully fresh and perfectly centered, Extremely Fine to Superb, with a 2023 P.S.E. certificate *graded XF-SUP 95*. Unitrade C\$750 (\$560). SMQ XF-SUP 95; \$900. Scott \$350. Estimate \$750 - 1,000



4061

4061 ★★

1897, Queen Victoria "Maple Leaf", 6¢ brown (Scott 71), a lovely mint single, o.g., never hinged, fresh and exceptionally well centered, Extremely Fine, with 2019 P.S.E. certificate *graded XF 90*. Unitrade C\$750 (\$560). SMQ XF 90; \$475. Scott \$350. Estimate \$300 - 400



4062

4062 ★★

1897, Queen Victoria "Maple Leaf", 6¢ brown (Scott 71), o.g., never hinged, fresh and well centered, Very Fine, with a 2019 P.S.E. certificate. Scott \$350. Estimate \$200 - 300



4063

4063 ★★田

1897, Queen Victoria "Maple Leaf", 6¢ brown (Scott 71), a pretty mint **block of 4**, o.g., never hinged, fresh and well centered with rich color; the left stamp with minor creases, otherwise Very Fine, with a 2018 P.S.E. certificate. Scott \$1,400 as singles. Estimate \$500 - 750



4064



4065



4066



4067

- 4064 ★★** 1897, Queen Victoria “Maple Leaf”, 8¢ orange (Scott 72), a pristine mint example, o.g., never hinged, fresh and beautifully centered with blazing color, Extremely Fine, with a 2019 P.S.E. certificate *graded XF 90*. SMQ **XF 90**; \$1,100. Scott \$850. Estimate \$750 - 1,000
- 4065 ★★田** 1897, Queen Victoria “Maple Leaf”, 8¢ orange (Scott 72), a striking mint **block of 4**, o.g., never hinged, reasonably well centered with gorgeous color, Fine to Very Fine, with a 2019 P.S.E. certificate. Scott \$3,400 as singles. Estimate \$800 - 1,200
- 4066 ★★** 1897, Queen Victoria “Maple Leaf”, 8¢ orange, imperf (Scott 72a), a lovely horizontal pair, o.g., never hinged, huge margins and brilliant color; light corner crease and natural gum wrinkle, Extremely Fine appearance, with a 2020 P.S.E. certificate *graded XF 90* despite noting the *light corner crease*. Scott \$1,300. Estimate \$400 - 600
- 4067 (★)** 1897, Queen Victoria “Maple Leaf”, 8¢ orange, imperf (Scott 72a), horizontal pair in brownish orange on vertically laid paper, without gum, large, nicely balanced margins, Very Fine, with a 2020 P.S.E. certificate as the normal shade *graded VF 80*. Unitrade 72i. Scott \$560. Estimate \$250 - 350



4068



4069



4070



4071

- 4068 ★★田** 1898, Queen Victoria “Numeral”, ½¢ black (Scott 74), a truly choice mint **block of 4**, o.g., never hinged, incredibly fresh and virtually perfectly centered, Extremely Fine to Superb, with a 2019 P.S.E. certificate *graded XF-SUP 95*. Unitrade C\$240 (\$180). SMQ XF-SUP 95; \$220 as singles. Scott \$168 as singles. Estimate \$200 - 300
- 4069 (★)** 1898, Queen Victoria “Numeral”, ½¢ black, imperf (Scott 74a), a pretty horizontal pair, without gum as issued, fresh and bright with ample, well balanced margins; very faint horizontal crease at the top, Fine to Very Fine, with a 2018 P.S.E. certificate *graded F-VF 75*. Scott \$500 for o.g. Estimate \$250 - 350
- 4070 (★)田** 1898, Queen Victoria “Numeral”, ½¢ black, imperf (Scott 74a), an exceptional left sheet margin block of 4, without gum, extra large margins, Extremely Fine to Superb, with a 2019 P.S.E. certificate *graded XF-SUP 95*. Scott \$1,000 as pairs. Estimate \$750 - 1,000
- 4071 (★)** 1898, Queen Victoria “Numeral”, ½¢ black, imperf on vertically wove paper (Unitrade 74v), a choice horizontal pair, without gum as issued, wonderfully fresh with perfectly balanced margins, Extremely Fine to Superb, with a 2018 P.S.E. certificate *graded XF-SUP 95*. Scott 74a var.; \$500. Unitrade C\$500 (\$370). Estimate \$400 - 600



4072

4072 ★★田

1898, Queen Victoria "Numeral", 1¢ gray green, 2¢ purple & 2¢ carmine (Scott 75, 76, 77), each in a bright, fresh well centered **block of 4**, o.g., never hinged, Very Fine, each with a 2018 or 2019 P.S.E. certificate *graded VF 80*. Scott \$1,840 as singles. Estimate \$500 - 750



4073

4073 ★★

1898, Queen Victoria "Numeral", 1¢ gray green (Scott 75), a gorgeous mint single, o.g., never hinged, bright, fresh and perfectly centered, Extremely Fine to Superb. *A Gem* with a 2006 P.F. certificate *graded XF-S 95*. Unitrade C\$240 (\$180). SMQ XF-S 95; \$225. Scott \$150. Estimate \$150 - 200



4074

4074 (★)

1898, Queen Victoria "Numeral", 1¢ gray green, imperf (Scott 75a), without gum, exceptionally large, well balanced margins, Extremely Fine to Superb, with a 2019 P.S.E. certificate *graded XF-Sup 95*. Scott \$1,100. Estimate \$1,000 - 1,500



4075

4075 ★★

1898, Queen Victoria "Numeral", 2¢ purple (Scott 76), a truly extraordinary mint single, o.g., never hinged, post office fresh and absolutely perfectly centered with fabulous color, Superb. *SMQ does not price a Sup 98*, with a 2019 P.F. certificate *graded SUP 98*. Unitrade C\$240 (\$180). SMQ \$220 an XF-Sup 95. Scott \$150. Estimate \$300 - 400



4076

4076 ★田

1899, Queen Victoria "Numeral", 2¢ purple, on thick paper (Scott 76a), and exceptional mint **block of 4**, virtually perfectly centered with marvelous color, Extremely Fine, *unpriced in SMQ*, with a 2018 P.S.E. certificate *graded XF 90*. Scott \$1,400 as singles. Estimate \$600 - 800



4077

4077 ★★田

1899, Queen Victoria "Numeral", 2¢ purple, on thick paper (Scott 76a), a marvelous mint **block of 4**, o.g., never hinged, post office fresh and beautifully centered with gorgeous color, Extremely Fine to Superb. *A rare block of this very difficult variety, unpriced in SMQ, with a 2018 P.S.E. certificate graded XF-SUP 95*. Unitrade C\$3,000 as singles (\$2,230). Scott \$1,500 as singles. Estimate \$1,500 - 2,000



4078

4078 ★★

1899, Queen Victoria "Numeral", 2¢ carmine, type I (Scott 77), an fabulous mint single, o.g., never hinged, incredibly fresh and seemingly perfectly centered with glowing color fresh and seemingly perfectly centered with glowing color, Extremely Fine to Superb, with 2025 P.S.E. certificate *graded XF-SUP 95J*. SMQ **XF-SUP 95J**; \$225 for a normal XF-Sup 95. Unitrade C\$270 (\$200). Scott \$160. Estimate \$200 - 300

(photo on back cover)



4079

4079 ★★田

1899, Queen Victoria “Numeral”, 2¢ carmine, type I (Scott 77), block of 4, o.g., never hinged, bright, fresh and well centered, the right stamps, in particular the lower right, being an *Extremely Fine Jumbo*, Fine to Very Fine to Extremely Fine, with a 2018 P.S.E. certificate. Scott \$640 as singles. Estimate \$300 - 400



4080

4080 ★★

1899, Queen Victoria “Numeral”, 2¢ carmine, type II (Scott 77a), a gorgeous mint example, o.g., never hinged, fresh, bright and perfectly centered, Extremely Fine to Superb, with a 2019 P.S.E. certificate *graded XF-SUP 95*. Unitrade C\$360 (\$270). Scott \$225. Estimate \$300 - 400



4081

4081 (★)

1899, Queen Victoria “Numeral”, 2¢ carmine, type I, imperf (Scott 77c), a choice horizontal pair, without gum, exceptionally fresh and bright with generous, beautifully balanced margins, Extremely Fine to Superb, with a 2019 P.S.E. certificate *graded XF-SUP 95*. Unitrade 77iv; C\$500 (\$370). SMQ XF-SUP 95. Scott \$550. Estimate \$350 - 500



4082

4082 (★)

1899, Queen Victoria “Numeral”, 2¢ carmine, type II, imperf (Scott 77d), top sheet margin vertical pair, without gum as issued, bright and fresh with large balanced margins, Extremely Fine and scarce, with a 2018 Gratton certificate as “Extremely Fine”. Scott \$875. Estimate \$300 - 400



4083

4083 ★★

1899, Queen Victoria “Numeral”, 5¢ blue, on bluish paper (Scott 79), o.g., never hinged, fresh and well centered with sheet margin at the right; natural paper inclusion on the Queen’s neck, otherwise Extremely Fine, with a 2021 P.S.E. certificate. Scott \$600. Estimate \$300 - 400



4084

4084 ★★

1899, Queen Victoria “Numeral”, 5¢ blue, on bluish paper (Scott 79), a fresh mint **strip of 3**, o.g., never hinged, fairly well centered with excellent color; left stamp with some light natural gum wrinkles, Fine to Very Fine. Scott \$1,800 as singles. Estimate \$350 - 500



4085

4085 (★)

1899, Queen Victoria “Numeral”, 5¢ blue, on bluish paper, imperf (Scott 79a), a choice horizontal pair, without gum as issued, bright and fresh with large, symmetrical margins, Extremely Fine, with a 2018 P.S.E. certificate *graded XF 90*, as “79d” (a typo). Unitrade 79ii; C\$900 (\$670). Scott \$1,100 for o.g. Estimate \$500 - 750



4086

4086 (★)



4087

4087 ★★



4088

4088 ★★



4089

4089 (★)



4090

4090 ★

1899, Queen Victoria “Numeral”, 5¢ blue, on bluish paper, imperf (Scott 79a), an outstanding vertical pair, without gum as issued, bright and fresh with large balanced margins; faint vertical crease, Extremely Fine appearance, with a 2020 P.S.E. certificate. Scott \$1,100. Estimate \$200 - 300

1898, Queen Victoria “Numeral”, 6¢ brown (Scott 80), a lovely little Gem, o.g., never hinged, post office fresh and perfectly centered, Extremely Fine to Superb, with a 2021 P.S.E. certificate *graded XF-SUP 95*. Unitrade C\$900 (\$670). SMQ XF-SUP 95; \$1,150. Scott \$500. Estimate \$750 - 1,000

1902, Queen Victoria “Numeral”, 7¢ olive yellow (Scott 81), a gorgeous left sheet margin *Jumbo*, o.g., never hinged, fresh and quite well centered with extraordinary color, Very Fine to Extremely Fine, with a 2019 P.S.E. certificate *graded VF-XF 85 J*. Unitrade C\$900 (\$670). Scott \$500. Estimate \$300 - 400

1902, Queen Victoria “Numeral”, 7¢ olive yellow, imperf (Scott 81a), an attractive left sheet margin horizontal pair, without gum as issued, ample to large margins with outstanding color, Very Fine, with a 2020 P.S.E. certificate. Scott \$600. Estimate \$350 - 500

1898, Queen Victoria “Numeral”, 8¢ orange (Scott 82), slightly disturbed o.g., bright, fresh and perfectly centered with extra large top & bottom margins, Extremely Fine, with a 2017 P.S.E. certificate *graded XF 90 J*. Unitrade C\$650 (\$480). Scott \$450. Estimate \$250 - 350



4091

4091 (★)



4092

4092 (★)



4093

4093 ★★

1898, Queen Victoria “Numeral”, 8¢ orange, imperf (Scott 82a), vertical pair, without gum as issued, ample to large margins, Very Fine to Extremely Fine, with a 2020 P.S.E. certificate *graded VF-XF 85*. Scott \$1,100. Estimate \$400 - 600

1898, Queen Victoria “Numeral”, 8¢ orange, imperf (Scott 82a), a choice horizontal pair, without gum as issued, large, perfectly balanced margins and marvelous color, Extremely Fine, with a 2020 P.S.E. certificate *graded XF 90*. Scott \$1,100. Estimate \$750 - 1,000

1898, Queen Victoria “Numeral”, 10¢ brown violet (Scott 83), a choice mint single, o.g., never hinged, wonderfully fresh and perfectly centered, Extremely Fine to Superb, with 2017 P.F. & 2010 Greene Foundation certificates, the former *graded XF-S 95*. Unitrade C\$2,250 (\$1,670). SMQ XF-SUP 95; \$2,400. Scott \$1,400. Estimate \$2,000 - 3,000



4094



4095



4096

4094 ★★

1898, Queen Victoria "Numeral", 10¢ brown violet (Scott 83), a choice mint single, o.g., never hinged, post office fresh and beautifully centered, Very Fine to Extremely Fine, with 2020 P.S.E. & 2019 Greene Foundation certificates, the former *graded VF-XF 85*. SMQ **VF-XF 85**; \$1,000. Unitrade C\$2,250 (\$1,670). Scott \$1,400. Estimate \$800 - 1,200

4095 (★)

1898, Queen Victoria "Numeral", 10¢ brown violet, imperf (Scott 83a), an extraordinary left sheet margin horizontal pair, without gum as issued, exceptionally fresh with large margins, Extremely Fine to Superb, with a 2019 P.S.E. certificate *graded XF-Sup 95 no gum*. Unitrade 83ii; C\$1,250 (\$930). Scott \$1,100 for o.g. Estimate \$750 - 1,000

4096 (★)

1898, Imperial Penny Postage, 2¢ black, gray & carmine, imperforate (Scott 85a), a pretty horizontal pair, without gum as issued, ample to large margins; small corner crease at the upper right, Very Fine to Extremely Fine. *Only 200 stamps produced*, with a 2020 P.S.E. certificate *graded VF-XF 85*, despite the corner crease. Unitrade 85iii; C\$700 (\$520). Scott \$500. Estimate \$300 - 400



4097



4098



4099



4100

4097 (★)

1898, Imperial Penny Postage, 2¢ black, lavender & carmine, imperf (Scott 85a), an outstanding, large-margined vertical pair, without gum as issued, Extremely Fine. *Only 200 stamps produced*, with a 2018 P.S.E. certificate *graded XF 90*. Unitrade C\$700 (\$520). Scott \$500. Estimate \$400 - 600

4098 ★★

1898, Imperial Penny Postage, 2¢ black, blue & carmine (Scott 86), a remarkable, top sheet margin single, o.g., never hinged (small hinge remnant in the selvage), bright, fresh and beautifully centered amid extra large, perfectly balanced margins, Extremely Fine to Superb, with a 2019 P.S.E. certificate *graded XF-SUP 95J*, not noting the hinge remnant. Yvert €80 (\$90). Unitrade C\$180 (\$130). 225 for a normal XF-Sup 95. Scott \$180. Estimate \$150 - 200

4099 ★★

1898, Imperial Penny Postage, 2¢ black, blue & carmine, "muddy waters" variety (Scott 86 var.), o.g., never hinged, fresh and perfectly centered, Extremely Fine to Superb. *A choice example of this unusual variety*, with a 2019 P.S.E. certificate *graded XF-SUP 95*, though mistakenly identifying it as Scott 88. Unitrade C\$180 for normal (\$130). SMQ XF-SUP 95; \$225 for normal. Scott \$80 for normal. Estimate \$200 - 300

4100 (★)

1898, Imperial Penny Postage, 2¢ black, blue & carmine, imperf pair (Scott 86a), an exceptional vertical pair, without gum as issued, fresh and bright with ample, beautifully balanced margins, Extremely Fine to Superb, with a 2019 P.S.E. certificate *graded XF-SUP 95*. Unitrade C\$700 (\$520). SMQ XF-SUP 95. Scott \$500. Estimate \$500 - 750



4101

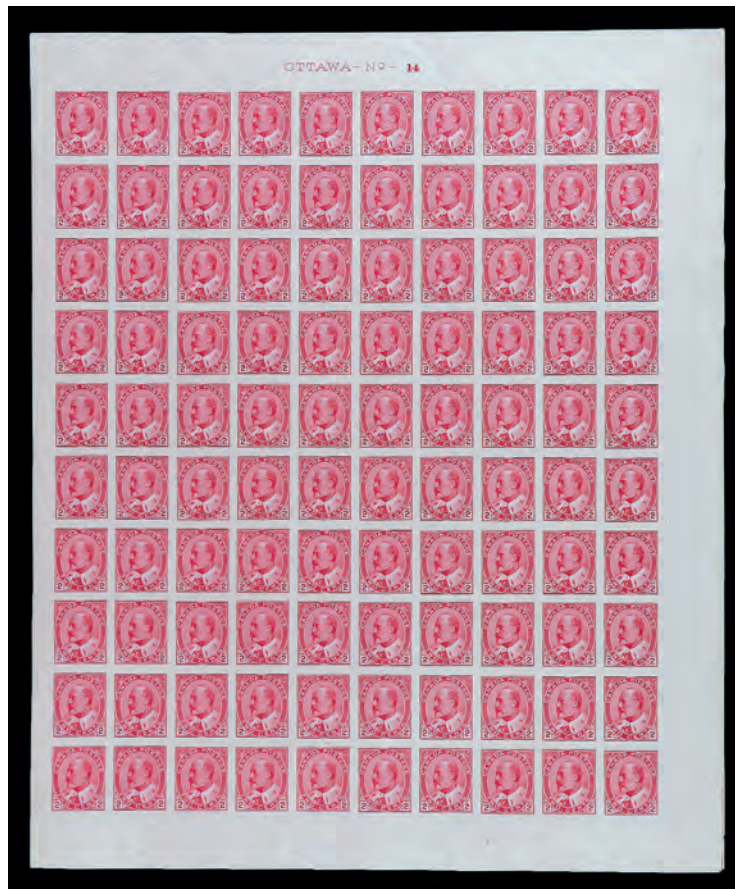


4102

- 4101 ★★/★田 1899, Queen Victoria “Maple Leaf”, 2¢ on 3¢ carmine (Scott 87), a lovely top Plate No. 6 block of 8, o.g., stamps never hinged, fresh and quite well centered, Very Fine, with a 2019 P.S.E. certificate. Scott \$440 as singles. Estimate \$200 - 300

KING EDWARD VII ISSUES

- 4102 ★★ 1903, King Edward VII, 1¢ green (Scott 89), a marvelous mint single, o.g., never hinged, post office fresh and perfectly centered, Extremely Fine to Superb, with a 2023 P.S.E. certificate *graded XF-SUP 95*. Unitrade C\$280 (\$210). SMQ XF-SUP 95; \$250. Scott \$175. Estimate \$200 - 300



4103

- 4103 ★★田 1903, King Edward VII, 2¢ carmine, type II, imperf. pair (Scott 90A), o.g., never hinged, fresh, crisply printed pane with plate number 14 in top selvage; horizontal crease in fifth row; light natural gum bends and wrinkles, two tiny tears in left margin not affecting stamps, Very Fine nonetheless, with 2023 P.S.E. certificate. Unitrade C\$9,850 as plate & singles (\$7,320). Estimate \$3,000 - 4,000



4104



4105



4106



4107

- 4104 (★)** 1903, King Edward VII, 2¢ carmine, type I, imperf (Scott 90c), a pretty left sheet margin horizontal pair, without gum as issued, generous margins and bright color, Very Fine to Extremely Fine. *Only 400 stamps were available*, with a 2023 P.S.E. certificate *graded VF-XF 85*. Unitrade C\$1,100 (\$820). Scott \$725. Estimate \$400 - 600
- 4105 ★★** 1903, King Edward VII, 2¢ carmine, type I (Scott 90e), o.g., never hinged, post office fresh and and virtually perfectly centered, Extremely Fine. *A choice example of the elusive type I*, with 2020 P.S.E. & 2018 Greene Foundation certificates, the former *graded XF 90*. Unitrade C\$700 (\$520). Scott \$375. Estimate \$350 - 500
- 4106 ★★** 1903, King Edward VII, 5¢ blue, on bluish paper (Scott 91), a truly extraordinary mint example, o.g., never hinged, incredibly fresh and absolutely perfectly centered with marvelous color, Superb. *SMQ does not price a Sup 98*, with a 2023 P.S.E. certificate *graded SUP 98*. Unitrade C\$1,225 (\$910). SMQ \$1,550 for an XF-Sup 95. Scott \$1,000. Estimate \$1,500 - 2,000
- 4107 (★)** 1903, King Edward VII, 5¢ blue, on bluish paper, imperf (Scott 91a), a choice horizontal pair, without gum as issued, large balanced margins and outstanding color, Extremely Fine. *Only 100 pairs are possible*, with a 2023 P.S.E. certificate *graded XF 90*. Scott \$1,100. Estimate \$750 - 1,000



4108



4109



4110

- 4108 (★)** 1903, King Edward VII, 5¢ blue, on bluish paper, imperf (Scott 91a), a pretty horizontal pair, without gum as issued, incredibly fresh with generous, beautifully balanced margins; very light horizontal crease, Very Fine. *Only 200 stamps produced*, with a 2023 P.S.E. certificate *graded VF 80* despite noting the crease. Unitrade C\$1,500 2023 (\$1,110). Scott \$1,100. Estimate \$350 - 500
- 4109 (★)** 1903, King Edward VII, 7¢ olive bistre, imperf (Scott 92a), a phenomenal upper right corner sheet margin horizontal pair, without gum as issued, choice in every respect, Extremely Fine to Superb. *A stunning showpiece*, with a 2018 P.S.E. certificate *graded XF-SUP 95*. Scott \$750. Estimate \$600 - 800
- 4110 (★)** 1903, King Edward VII, 10¢ brown lilac, imperf (Scott 93a), without gum as issued, exceptionally fresh with ample to large margins, Very Fine to Extremely Fine, with a 2021 Crowe certificate *graded 85 Very Fine-Extremely Fine*. Scott \$1,100. Estimate \$750 - 1,000
- 4111 ★★田** 1908, ½¢ Quebec Tercentenary (Scott 96), complete sheet of 100, plate number 1, o.g., never hinged, fresh-faced with sharp detail, folded in half vertically; positions 1-2 & 99 with creases, position 1 with a gum adherence, Fine, with 2019 P.S.E. certificate. Unitrade C\$1,560 as plate & singles (\$1,160). (photo on web site) Estimate \$750 - 1,000



4112



4113



4114



4115

4112 ★★ 1908, 1c Quebec Tercentenary (Scott 97), a gorgeous mint single, o.g., never hinged, fresh and perfectly centered with extra large top & bottom margins, Extremely Fine to Superb, with a 2018 P.S.E. certificate *graded XF-SUP 95*. Untrade C\$150 (\$110). SMQ \$175. Scott \$90. Estimate \$150 - 200

4113 ★ 1908, 5c Quebec Tercentenary (Scott 99), o.g., barely hinged, bright, fresh and virtually perfectly centered, Extremely Fine, with a 2021 P.S.E. certificate *graded XF 90*. SMQ **XF 90**; \$285. Scott \$95. Estimate \$200 - 300

4114 ★★ 1908, 5c Quebec Tercentenary (Scott 99), o.g., never hinged, post office fresh and beautifully centered, Very Fine to Extremely Fine, with a 2019 P.S.E. certificate *graded VF-XF 85*. SMQ **VF-XF 85**; \$225. Scott \$275. Estimate \$150 - 200

4115 (★) 1908, 5c Quebec Tercentenary, imperf (Scott 99a), vertical pair with bottom sheet margin, without gum as issued, exceptionally fresh with large to oversize margins, Very Fine, with a 2023 P.S.E. certificate *graded VF 80*. Scott \$750. Estimate \$400 - 600



4116



4117



4118

4116 ★ 1908, 7c Quebec Tercentenary (Scott 100), fresh, bright and virtually perfectly centered within large balanced margins, Extremely Fine, with a 2019 P.S.E. certificate *graded XF 90* despite noting a tiny gum crease at the bottom. SMQ \$575. Scott \$475. Estimate \$400 - 600

4117 ★ 1908, 10c Quebec Tercentenary (Scott 101), o.g., very lightly hinged, bright, fresh and virtually perfectly centered, Very Fine to Extremely Fine, with a 2019 P.S.E. certificate *graded VF-XF 85*. SMQ **VF-XF 85**; \$600. Scott \$200. Estimate \$400 - 600

4118 ★ 1908, 10c Quebec Tercentenary (Scott 101), bright, fresh and well centered, Very Fine, with a 2016 P.S.A.G. certificate *graded 80*. SMQ **VF 80**; \$500. Scott \$675. Estimate \$350 - 500



4119



4120



4121



4122

4119 ★★

1908, 15¢ Quebec Tercentenary, imperf (Scott 102a), an exceptional horizontal pair, o.g., never hinged, bright and fresh with choice color and extra large, perfectly balanced margins, Extremely Fine. *Only 50 pairs are thought to have been issued, with a 2021 P.S.E. certificate graded XF 90.* Unitrade C\$2,500 (\$1,860). Scott \$1,400. Estimate \$1,500 - 2,000

KING GEORGE V ISSUES

4120 ★★

1912, King George V “Admiral”, 1¢ dark green (Scott 104), a Superlative, perfectly centered mint *Jumbo*, o.g., never hinged, fresh-off-the-press appearance with wide, beautifully balanced margins, Superb. *A true Gem* with a 2020 P.S.E. certificate graded *SUP 98J*. Scott \$65. SMQ \$400. Unitrade C\$120 (\$90). Estimate \$350 - 500

4121 ★★

1912, King George V “Admiral”, 1¢ dark green (Scott 104), a fantastic, perfectly centered mint single, o.g., never hinged, wonderfully fresh with perfectly balanced margins, Superb, with a 2020 P.S.E. certificate graded *SUP 98*. Scott \$65. SMQ \$275. Unitrade C\$120 (\$90). Estimate \$200 - 300

4122 ★★田

1912, King George V “Admiral”, 1¢ deep blue green (Scott 104c), an exceptional mint **block of 4**, o.g., never hinged, wonderfully fresh and well centered with extraordinary color, Very Fine to Extremely Fine, with a 2019 P.S.E. certificate. Scott \$1,200 as singles. Estimate \$500 - 750



4123



4124



4125

4123 ★★

1922, King George V “Admiral”, 1¢ yellow, wet printing, type I (Scott 105), a gorgeous mint single, o.g., never hinged, post office fresh and perfectly centered, Extremely Fine to Superb, with a 2023 P.S.E. certificate graded *XF-SUP 95*. Unitrade C\$120 (\$90). SMQ \$170. Scott \$65. Estimate \$100 - 150

4124 ★

1922, King George V “Admiral”, 1¢ yellow, wet printing, type I (Scott 105), a choice bottom sheet margin horizontal pair with inverted type D lathework, incredibly fresh and virtually perfectly centered, Extremely Fine to Superb, with a 2020 Greene Foundation certificate. Unitrade C\$750 (\$560). Scott \$105 ++. Estimate \$400 - 600

4125 ★★田

1922, King George V “Admiral”, 1¢ yellow, wet printing, type I (Scott 105), a pristine bottom sheet margin **block of 4 with type C lathework**, o.g., never hinged, bright and beautifully centered, Very Fine to Extremely Fine, with a 2019 P.S.E. certificate graded *VF-XF 85*. Scott \$260 ++. Unitrade C\$450 (\$330). Estimate \$350 - 500



4126



4127



4128



4129

- 4126 ★★田** 1922, King George V "Admiral", 1¢ yellow, wet printing, type I (Scott 105), upper right corner sheet margin block of 12, o.g., never hinged, bright, fresh and nicely centered; position 6 with a small natural gum disturbance, Very Fine, with a 2019 P.S.E. certificate. Scott \$780. Estimate \$200 - 300
- 4127 ★★** 1922, King George V "Admiral", 1¢ orange yellow, dry printing, type II (Scott 105d), a magnificent mint single, o.g., never hinged, exceptionally bright and fresh with large, perfectly balanced margins, Superb. *Perfection! #105d is unpriced by SMQ*, with a 2019 P.S.E. certificate *graded SUP 98*. Unitrade C\$90 (\$70). Scott \$50. Estimate \$200 - 300
- 4128 ★★** 1912, King George V "Admiral", 2¢ carmine (Scott 106), a truly magnificent mint single, o.g., never hinged, post office fresh and absolutely perfectly centered, Superb. *SMQ does not price any grade higher than XF-Sup 95*, with a 2022 P.S.E. certificate *graded SUP 98*. Unitrade C\$120 (\$90). Scott \$65. Estimate \$200 - 300
- 4129 ★★田** 1922, King George V "Admiral", 2¢ yellow green, wet printing (Scott 107), a choice mint block of 4, o.g., never hinged, bright and beautifully centered, Extremely Fine, with a 2019 P.S.E. certificate *graded XF 90*. Unitrade C\$600 as singles (\$450). Scott \$360 as singles. Estimate \$400 - 600



4130



4131

- 4130 ★★田** 1922, King George V "Admiral", 2¢ yellow green, wet printing (Scott 107), mint block of 4, o.g., never hinged, well centered and fresh, Very Fine, with a 2018 P.S.E. certificate *graded VF 80*. Scott \$360 as singles. Estimate \$200 - 300
- 4131 ★★** 1924, King George V "Admiral", 2¢ deep green, thin paper, wet printing (Scott 107a), an exceptional mint single, o.g., never hinged, post office fresh and perfectly centered, Extremely Fine to Superb, with a 2018 P.S.E. certificate *graded XF-SUP 95* mistakenly identifying it as Scott 107, the yellow green shade. *SMQ XF-SUP 95*; \$170 for regular #107. Scott \$50. Estimate \$150 - 200



4132



4133



4134

- 4132 ★★** 1923, King George V “Admiral”, 2¢ green, dry printing (Scott 107e), an extraordinary mint example, o.g., never hinged, incredibly fresh and well centered, Extremely Fine to Superb, with a 2023 P.S.E. certificate *graded XF-SUP 95*. SMQ **XF-SUP 95**; \$170 for regular #107. Scott \$50. Estimate \$150 - 200

- 4133 BK★★** 1922, King George V “Admiral”, 2¢ yellow green, booklet pane of 6, dry printing (Scott 107f), o.g., never hinged but with “minor gum disturbance” per accompanying certificate, about as close to perfectly centered as possible for a booklet pane, fresh color, Extremely Fine, with an ungraded 2019 P.S.E. certificate. Unitrade C\$450 for hinged (\$330). Scott \$300 for hinged. Estimate \$300 - 400

- 4134 ★★田** 1918, King George V “Admiral”, 3¢ brown, wet printing (Scott 108), bottom margin block of 4 with partial inverted type D lathework, o.g., never hinged, fresh and nicely centered, Very Fine, with a 2019 P.S.E. certificate *graded VF 80*. Scott \$260 as singles. Estimate \$200 - 300



4135

- 4135 ★★田** 1918, King George V “Admiral”, 3¢ brown, wet printing (Scott 108), a fresh top margin Plate No. 118 block of 20 from an upper left pane, o.g., never hinged, fresh, solid and nicely centered; couple small, minor creases in the selvage above position 2 (not affecting the plate block of 8), Fine to Very Fine, with a 2019 P.S.E. certificate noting the creases. Scott \$1,300 as singles. Estimate \$500 - 750



4136

- 4136 ★★** 1918, King George V “Admiral”, 3¢ brown, dry printing (Scott 108c), a truly spectacular *Jumbo!*, o.g., never hinged, fresh, bright and mathematically centered amid four oversized, beautifully balanced margins, Superb. #108c is not priced by SMQ, but Scott prices it the same as #108, which SMQ prices only as high as XF-Sup 95 (\$140), with a 2025 P.S.E. certificate *graded SUP 98 J*. Unitrade C\$150 (\$110). Scott \$80. Estimate \$250 - 350



WILLIAM KINNEY “EVEREST” CANADA



4137



4138



4139

4137 ★★

1923, King George V “Admiral”, 3¢ carmine, type I (Scott 109), a *perfect* mint single, o.g., never hinged, perfectly fresh and perfectly centered within perfectly symmetrical margins, Superb. *Incomparable! SMQ does not price any grade higher than XF-Sup 95 (\$105)*, with a 2019 P.S.E. certificate *graded GEM 100!*. Unitrade C\$90 (\$70). Scott \$48. Estimate \$350 - 500

4138 ★★

1923, King George V “Admiral”, 3¢ carmine, type I (Scott 109), a fabulous mint single, o.g., never hinged, bright, fresh and perfectly centered, Superb. *SMQ does not price any grade higher than XF-Sup 95 (\$105)*, with a 2018 P.S.E. certificate *graded SUP 98*. Unitrade C\$90 (\$70). Scott \$48. Estimate \$200 - 300

4139 ★★田

1923, King George V “Admiral”, 3¢ carmine, type I (Scott 109), a lovely mint **block of 4**, o.g., never hinged, bright, fresh and exceptionally well centered, Extremely Fine, with a 2019 P.S.E. certificate *graded XF 90*. *SMQ XF 90*; \$220. Scott \$190 as singles. Estimate \$150 - 200



4140

4140 ★★/★田

1923, King George V “Admiral”, 3¢ carmine, type I (Scott 109), a choice bottom sheet margin **Imprint & Plate No. 126 block of 16** with type D lathe work, o.g., three top stamps lightly hinged, rest never hinged, fresh and well centered, Very Fine to Extremely Fine, with a 2019 P.S.E. certificate *calling the block never hinged*. Scott \$678 as singles. Estimate \$500 - 750



4141



4142

4141 ★★

1922, King George V “Admiral”, 4¢ olive yellow, wet printing (Scott 110b), an extraordinary mint single, o.g., never hinged, perfectly centered and incredibly fresh with gorgeous color, Superb. *#110b is not priced by SMQ, but Scott prices it the same as #110, which SMQ prices only as high as XF-Sup 95 (\$350)*, with a 2019 P.S.E. certificate *graded SUP 98*. Unitrade C\$300 (\$220). Scott \$145. Estimate \$300 - 400

4142 ★★

1925, King George V “Admiral”, 4¢ yellow ocher, dry printing (Scott 110d), an exceptional mint example, o.g., never hinged, bright, fresh and beautifully centered, Extremely Fine, with a 2018 P.S.E. certificate *graded XF 90*. Unitrade C\$240 (\$180). Scott \$150. Estimate \$150 - 200



4143



4144



4145



4146

4143 ★★田

1925, King George V “Admiral”, 4¢ yellow ocher, dry printing (Scott 110d), a choice mint **block of 4**, o.g., never hinged, exceptionally bright and fresh with marvelous color, Extremely Fine, with a 2019 P.S.E. certificate *graded XF 90*. SMQ **XF 90**; \$720 for regular #110. Scott \$600 as singles. Estimate \$500 - 750

4144 ★★

1912, King George V “Admiral”, 5¢ gray blue (Scott 111b), an fantastic mint single, o.g., never hinged, fresh and virtually perfectly centered with deep, rich color, Superb. *SMQ prices a “95” at \$1150*, with 2015 C.P.E.S. certificate *graded “98”*. Unitrade C\$1,200 (\$890). Scott \$575. Estimate \$800 - 1,200

4145 ★★

1922, King George V “Admiral”, 5¢ violet, wet printing (Scott 112), an extraordinary mint single, o.g., never hinged, incredibly fresh and mathematically centered, Extremely Fine to Superb, with a 2018 P.S.E. certificate *graded XF-SUP 95*. Unitrade C\$180 (\$130). SMQ \$285. Scott \$110. Estimate \$200 - 300

4146 ★★田

1922, King George V “Admiral”, 5¢ violet, wet printing (Scott 112), a fresh, nicely centered **block of 4**, o.g., never hinged, Very Fine, with a 2018 P.S.E. certificate *graded VF 80*. Scott \$440 as singles. Estimate \$200 - 300



4147

4147 ★田

1922, King George V “Admiral”, 5¢ violet, wet printing (Scott 112), a lovely top **Imprint & Plate No. A 22 block of 10**, o.g., lightly hinged in the selvage only (stamps never hinged), with a 2019 P.S.E. certificate. Scott \$1,100 for singles. Estimate \$500 - 750



4148

4148 ★★

1922, King George V “Admiral”, 5¢ violet, wet printing (Scott 112), top margin strip of **10 with imprint & plate no. 24**, o.g., never hinged, exceptionally fresh with great color, Fine to Very Fine, with a 2019 P.S.E. certificate. Scott \$1,100 as singles. Estimate \$400 - 600



WILLIAM KINNEY “EVEREST” CANADA



4149



4150



4151



4152



4153



4154

- 4149 ★★** 1924, King George V “Admiral”, 5¢ violet, thin paper, wet printing (Scott 112a), a truly choice mint single, o.g., never hinged, post office fresh and perfectly centered, Superb, with a 2018 P.S.E. certificate *graded SUP 98*. Unitrade C\$150 (\$110). Scott \$88. Estimate \$250 - 350
- 4150 ★★** 1924, King George V “Admiral”, 5¢ violet, thin paper, wet printing (Scott 112a), o.g., never hinged, post office fresh and virtually perfectly centered, Extremely Fine to Superb, with a 2021 P.S.E. certificate *graded XF-SUP 95*. Unitrade C\$150 (\$110). Scott \$88. Estimate \$200 - 300
- 4151 ★★田** 1924, King George V “Admiral”, 5¢ violet, thin paper, wet printing (Scott 112a), an exceptional mint **block of 4**, o.g., never hinged, wonderfully fresh and well centered, Extremely Fine, with a 2018 P.S.E. certificate *graded XF 90*. SMQ **XF 90**; \$600 for regular #112. Scott \$350 as singles. Estimate \$400 - 600
- 4152 ★★** 1925, King George V “Admiral”, 5¢ violet, dry printing (Scott 112c), a phenomenal mint single, o.g., never hinged, remarkably fresh and bright and mathematically centered, Superb, with a 2020 P.S.E. certificate *graded SUP 98*. Unitrade C\$210 (\$160). Scott \$115. Estimate \$300 - 400
- 4153 ★★** 1912, King George V “Admiral”, 7¢ yellow ocher (Scott 113), bottom sheet margin single with full **type B lathework**, o.g., never hinged, fresh and quite well centered; light natural gum skip (not mentioned on the accompanying certificate), Very Fine, with a 2019 P.S.E. certificate. Unitrade C\$400 (\$300). Scott \$130+. Estimate \$200 - 300
- 4154 ★★** 1915, King George V “Admiral”, 7¢ olive bister (Scott 113a), a gorgeous mint single, o.g., never hinged, wonderfully fresh and well centered with extraordinary color, Extremely Fine to Superb, with a 2015 C.P.E.S. certificate *graded “95”*. Unitrade C\$360 (\$270). Scott \$220. Estimate \$250 - 350



4155



4156

- 4155 ★★田** 1915, King George V “Admiral”, 7¢ olive bister (Scott 113a), upper left corner margin **block of 8** with Plate No A 5 and partial imprint, o.g., never hinged, exceptional color; natural gum skip affecting the two right stamps, Fine to Very Fine, with a 2018 P.S.E. certificate. Scott \$1,760 as singles. Estimate \$400 - 600
- 4156 ★★** 1924, King George V “Admiral”, 7¢ red brown, dry printing (Scott 114), a fabulous mint single,—perfect in all respects and rated so by the Philatelic Foundation, o.g., never hinged, Superb. *SMQ does not price any grade higher than XF-Sup 95 (\$140)*, with a 2007 P.F. certificate *graded SUP GEM 100*. Unitrade C\$105 (\$80). Scott \$65. Estimate \$400 - 600



4157



4158



4159

4157 ★★田

1924, King George V “Admiral”, 7¢ red brown, dry printing (Scott 114), block of 4, o.g., never hinged, fresh, bright and very well centered, Very Fine to Extremely Fine, with a 2018 P.S.E. certificate *graded VF-XF 85*. Scott \$260 as singles. Estimate \$150 - 200

4158 ★★田

1924, King George V “Admiral”, 7¢ red brown, dry printing (Scott 114), bottom margin block of 4 with full type D lathework, o.g., never hinged, fresh and quite well centered, Very Fine, with a 2020 P.S.E. certificate *graded VF 80*. Unitrade C\$400 (\$300). Scott \$260 as singles. Estimate \$400 - 600

4159 ★田

1924, King George V “Admiral”, 7¢ red brown, dry printing (Scott 114), top Imprint Plate No. A 8 block of 8, o.g., lightly hinged in the selvage only (stamps never hinged); fresh and nicely centered, Very Fine, with a 2018 P.S.E. certificate. Scott \$520. Estimate \$350 - 500



4160



4161



4162



4163

4160 ★★

1924, King George V “Admiral”, 7¢ red brown, imperf (Scott 114a), a lovely horizontal pair, o.g., never hinged, bright and fresh with large balanced margins; right stamp with light internal wrinkles (the certificate notes light creases), Very Fine appearance. *Only 100 imperfs were produced*, with a 2023 P.S.E. certificate. Scott \$425. Estimate \$200 - 300

4161 ★★

1924, King George V “Admiral”, 7¢ red brown, wet printing (Scott 114b), a gorgeous mint example, o.g., never hinged, post office fresh and perfectly centered with extra large top & bottom margins, Superb, with 2012 C.P.E.S. certificate *graded “98”*. Unitrade C\$135 (\$100). Scott \$80. Estimate \$200 - 300

4162 ★

1924, King George V “Admiral”, 7¢ red brown, wet printing (Scott 114b), bottom sheet margin single with type D lathework (40% as always), fresh and beautifully centered, Extremely Fine, with a 2019 P.S.E. certificate *graded XF 90*. Unitrade C\$160 (\$120). Scott \$80+. Estimate \$150 - 200

4163 ★★/★田

1924, King George V “Admiral”, 7¢ red brown, wet printing (Scott 114b), an exceptional **block of 4**, o.g., lightly hinged on the upper right stamp only, the rest never hinged, post office fresh and quite well centered for a block, Very Fine to Extremely Fine, with a 2018 P.S.E. certificate *graded VF-XF 85*. Unitrade C\$540 as singles (\$400). Scott \$320 as singles. Estimate \$200 - 300



4164

4164 ★★

1925, King George V “Admiral”, 8¢ blue (Scott 115), o.g., never hinged, post office fresh and beautifully centered with great color and contrast, Extremely Fine to Superb, with a 2021 P.S.E. certificate *graded XF-SUP 95*. Unitrade C\$180 (\$130). 200. Scott \$100. Estimate \$150 - 200



4165

4165 ★★

1925, King George V “Admiral”, 8¢ blue (Scott 115), strip of 4 with plate no.3 and part imprint, o.g., never hinged, bright, fresh and quite well centered, Very Fine, with a 2019 P.S.E. certificate *calling it a strip of three*. Scott \$400 as singles. Estimate \$200 - 300



4166

4166 ★

1925, King George V “Admiral”, 8¢ blue, imperf pair (Scott 115a), a pristine horizontal pair, o.g. with barely any trace of a hinge (in our opinion, this stamp is never hinged, but the certificate says otherwise), large balanced margins and intense color, Very Fine to Extremely Fine. *Only 100 imperfs were produced*, with a 2024 P.S.E. certificate *graded VF-XF 85* previously hinged. Scott \$2,250. Estimate \$1,000 - 1,500



4167

4167 ★★

1922, King George V “Admiral”, 10¢ blue, wet printing (Scott 117), an extraordinary mint single, o.g., never hinged, Superb. *SMQ does not price any grade higher than XF-Sup 95 (\$314)*, with a 2020 P.S.E. certificate *graded SUP 98*. Unitrade C\$270 (\$200). Scott \$150. Estimate \$300 - 400



4168

4168 ★★

1922, King George V “Admiral”, 10¢ blue, wet printing (Scott 117), o.g., never hinged, a lovely stamp with rich color on pristine paper, sound with near-perfect centering, Extremely Fine, with 2018 P.S.E. certificate *graded XF 90*. *SMQ XF 90*; \$165. Estimate \$200 - 300



4169

4169 ★★田

1922, King George V “Admiral”, 10¢ blue, wet printing (Scott 117), a fresh, well centered **block of 4**, o.g., never hinged, Extremely Fine, with a 2020 P.S.E. certificate *graded XF 90*. *SMQ XF 90*; \$660. Scott \$600 as singles. Estimate \$400 - 600



4170

4170 ★★田

1922, King George V “Admiral”, 10¢ blue, wet printing (Scott 117), **block of 4**, o.g., never hinged, fresh and bright, Very Fine to Extremely Fine, with a 2017 Gratton certificate as Very Fine. Scott \$600 as singles. Estimate \$200 - 300



4171

4171 ★★/★田

1922, King George V “Admiral”, 10¢ blue, wet printing (Scott 117), block of 4, o.g., 3 stamps never hinged, upper left extremely lightly hinged, reasonably well centered with bright color, Fine to Very Fine, with a 2018 P.S.E. certificate. Scott \$510 as singles. Estimate \$200 - 300



4172



4173



4174



4175



4176

- 4172 ★★** 1922, King George V “Admiral”, 10c blue, dry printing (Scott 117a), a choice top margin single, o.g., never hinged, bright, fresh and perfectly centered, Extremely Fine to Superb, with a 2020 P.S.E. certificate *graded XF-SUP 95*. Unitrade C\$210 (\$160). Scott \$130. Estimate \$200 - 300
- 4173 ★★** 1922, King George V “Admiral”, 10c light blue, wet printing (Unitrade 117ii), o.g., never hinged, wonderfully fresh and virtually perfectly centered with a noticeably lighter shade than the normal blue, Extremely Fine to Superb, with a 2020 P.S.E. certificate *graded XF-SUP 95*. Scott 117 var.; \$150. Unitrade C\$270 (\$200). Estimate \$200 - 300
- 4174 ★★** 1925, King George V “Admiral”, 10c bister brown (Scott 118), an outstanding upper right corner margin single, o.g., never hinged, incredibly fresh and well centered, Extremely Fine to Superb, with a 2007 P.F. certificate *graded XF-S 95*. Unitrade C\$180 (\$130). SMQ \$300. Scott \$100. Estimate \$200 - 300
- 4175 ★★田** 1925, King George V “Admiral”, 10c bister brown (Scott 118), right sheet margin **block of 4**, o.g., never hinged, fresh and reasonably well centered, the lower left stamp a Gem, F-VF to Extremely Fine, with a 2019 P.S.E. certificate. Scott \$400 as singles. Estimate \$200 - 300
- 4176 ★★/★田** 1925, King George V “Admiral”, 10c bister brown (Scott 118), an outstanding **block of 4**, o.g., lightly hinged on the lower left stamp only, the rest never hinged, incredibly bright, fresh and beautifully centered centered, Very Fine to Extremely Fine, with a 2018 P.S.E. certificate *graded VF-XF 85*. Scott \$340 as singles. Estimate \$400 - 600



4177



4178



4179

- 4177 ★★/★田** 1925, King George V “Admiral”, 10c bister brown (Scott 118), top sheet margin **Imprint & Plate No. 24 block of 8**, o.g., lightly hinged in the selvage only, bright, fresh and well centered, Very Fine, with a 2018 P.S.E. certificate. Scott \$800 as singles. Estimate \$400 - 600
- 4178 ★★田** 1925, King George V “Admiral”, 10c yellow brown (Scott 118b), a fresh, nicely centered **block of 4**, o.g., never hinged, Very Fine. Scott \$600 as singles. Estimate \$250 - 350
- 4179 ★★** 1925, King George V “Admiral”, 20c olive green, dry printing (Scott 119), a gorgeous mint example, o.g., never hinged, fresh and virtually perfectly centered, Extremely Fine, with a 2019 P.S.E. certificate *graded XF 90*. Unitrade C\$450 (\$330). SMQ \$375. Scott \$290. Estimate \$250 - 350



WILLIAM KINNEY "EVEREST" CANADA



4180



4181



4182



4183



4184

4180 ★★

1925, King George V "Admiral", 20¢ olive green, dry printing (Scott 119), o.g., never hinged, exceptionally fresh and well centered with intense color, Very Fine to Extremely Fine. *Quite likely the dark olive green shade (119c)*, with a 2018 P.S.E. certificate *graded VF-XF 85*. Unitrade C\$450 (\$330). Scott \$290. Estimate \$250 - 350

4181 ★★

1925, King George V "Admiral", 20¢ olive green, dry printing (Scott 119), o.g., never hinged, fresh and nicely centered, Very Fine to Extremely Fine, with a 2019 P.S.E. certificate *graded VF-XF 85*. Scott \$290. Estimate \$150 - 200

4182 ★★

1925, King George V "Admiral", 20¢ olive green, imperf (Scott 119a), a lovely horizontal pair, o.g., never hinged, large margins and rich color; light horizontal crease below the left stamp, Very Fine appearance. *Only 100 imperfs were produced*, with 2024 P.S.E. certificate *graded VG 50* and a 2019 Greene Foundation certificate. Scott \$4,250. Estimate \$750 - 1,000

4183 ★★

1925, King George V "Admiral", 50¢ black brown, dry printing (Scott 120), a truly *superlative* mint single, o.g., never hinged, wonderfully fresh and exquisitely centered amid large, perfectly symmetrical margins, Superb. A *genuine "Top-of-the-Pop"*, with a 2020 P.S.E. certificate *graded GEM 100*. Unitrade C\$300 (\$220). SMQ \$1,100. Scott \$200. Estimate \$800 - 1,200

(photo on front cover)

4184 ★★

1925, King George V "Admiral", 50¢ black brown, dry printing (Scott 120), a phenomenal mint example, o.g., never hinged, post office fresh and and perfectly centered, Superb, with a 2017 P.S.E. certificate *graded SUP 98*. Unitrade C\$300 (\$220). SMQ \$650. Scott \$200. Estimate \$500 - 750



4185



4186



4187

4185 ★★

1925, King George V "Admiral", 50¢ black brown, dry printing (Scott 120), a fabulous little Gem, o.g., never hinged, post office fresh with generous, perfectly balanced margins, Extremely Fine to Superb, with a 2018 P.S.E. certificate *graded XF-SUP 95*. Unitrade C\$300 (\$220). SMQ \$400. Scott \$200. Estimate \$300 - 400

4186 ★★

1925, King George V "Admiral", 50¢ black brown, dry printing (Scott 120), a choice mint single, o.g., never hinged, incredibly fresh and well centered, Extremely Fine, *with a 2019 P.S.E. certificate graded XF 90*. Unitrade C\$300 (\$220). Scott \$200. Estimate \$250 - 350

4187 ★★

1925, King George V "Admiral", 50¢ black brown, dry printing (Scott 120), o.g., never hinged, fresh and beautifully centered (possibly under-graded), Very Fine to Extremely Fine, with a 2018 P.S.E. certificate *graded VF-XF 85*. Scott \$300. Estimate \$200 - 300



4188



4189



4190



4191



4192

- 4188 ★★田** 1925, King George V “Admiral”, 50¢ black brown, dry printing (Scott 120), a remarkable mint **block of 4**, o.g., never hinged, post office fresh and uncommonly well centered for a block, *with all four stamps possibly “Jumbos”*; as singles, Very Fine to Extremely Fine, with a 2020 Greene Foundation certificate. Unitrade C\$1,200 as singles (\$890). Scott \$800 as singles. Estimate \$600 - 800
- 4189 ★★田** 1925, King George V “Admiral”, 50¢ black brown, dry printing (Scott 120), a fresh, nicely centered **block of 4**, o.g., never hinged, Very Fine, with a 2017 P.S.E. certificate *graded VF 80*. Scott \$800. Estimate \$400 - 600
- 4190 ★★** 1923, King George V “Admiral”, \$1 orange, dry printing (Scott 122), a truly choice, extra-wide *Jumbo*, o.g., never hinged, post office fresh and and mathematically centered with gorgeous color, Superb. *SMQ does not price any grade higher than XF-Sup 95 (\$675)*, with 2025 P.S.E. certificate graded SUP 98 J. SMQ **SUP 98J**. Unitrade C\$360 (\$270). Scott \$215. Estimate \$750 - 1,000
- 4191 ★★** 1923, King George V “Admiral”, \$1 orange, dry printing (Scott 122), a gorgeous mint example, o.g., never hinged, post office fresh and virtually perfectly centered with absolutely **glowing** color, Extremely Fine to Superb, with a 2024 P.S.E. certificate *graded XF-SUP 95*. Unitrade C\$360 (\$270). SMQ \$675. Scott \$215. Estimate \$500 - 750
- 4192 ★★** 1923, King George V “Admiral”, \$1 orange, dry printing (Scott 122), a choice mint single, o.g., never hinged, post office fresh and virtually perfectly centered with brilliant color, Extremely Fine, with a 2018 P.S.E. certificate *graded XF 90*. Unitrade C\$260 (\$190). SMQ \$350. Scott \$215. Estimate \$250 - 350



4193

- 4193 ★★/★田** 1923, King George V “Admiral”, \$1 orange, dry printing (Scott 122), block of 6, o.g., two top middle stamps lightly hinged, rest never hinged, bright, fresh and quite well centered, Very Fine, with a 2017 P.S.E. certificate. Scott \$1,460 as singles. Estimate \$350 - 500



4194

- 4194 ★★** 1923, King George V “Admiral”, \$1 orange, imperf. pair (Scott 122a), o.g., never hinged, fresh and crisp with bold color and full, balanced margins, Extremely Fine, with 2023 P.S.E. certificate graded XF 90. SMQ **XF 90**. Scott \$4,250. Estimate \$2,500 - 3,500

(photo on front cover)



4195

4195 ★★

1923, King George V “Admiral”, \$1 orange, imperf pair (Scott 122a), o.g., never hinged, large margins and extraordinary color; right stamp with a light gum bend, Very Fine to Extremely Fine appearance. *Only 100 imperfs were produced*, with 2024 P.S.E. certificate noting “vertical creases” in the right stamp and a 2009 Greene Foundation certificate noting, more accurately, a light gum bend. Scott \$4,250. Estimate \$1,500 - 2,000



4196

4196 ★★

1923, King George V “Admiral”, 1c yellow, type I, wet printing, horizontal coil, perf. 8 vertically (Scott 126b), an exceptional strip of 4, o.g., never hinged, bright, fresh and very well centered, Very Fine to Extremely Fine, with a 2018 P.S.E. certificate. Unitrade C\$450 (\$330). Scott \$300. Estimate \$200 - 300



4197

4197 ★★

1912, King George V “Admiral”, 2c carmine, horizontal coil, perf. 8 vertically (Scott 127), an excellent pair, o.g., never hinged, fresh and very well centered, Very Fine to Extremely Fine, with a 2018 P.S.E. certificate graded VF-XF 85. Unitrade C\$300 (\$220). Scott \$210. Estimate \$150 - 200

4198

4198 ★★

1922, King George V “Admiral”, 2c green, horizontal coil, perf. 8 vertically (Scott 128), a “Top-of-the-Pop” coil single, o.g., never hinged, post office fresh and perfectly centered; there’s nothing more to say, Superb. *SMQ does not price any grade higher than XF-Sup 95 (\$140)*, with a 2018 P.S.E. certificate graded GEM 100. Unitrade C\$125 (\$90). Scott \$75. Estimate \$250 - 350



4199

4199 ★★田

1922, King George V “Admiral”, 2c green, horizontal coil, perf. 8 vertically (Scott 128a), a choice vertical block of 20 with full top & bottom sheet margins, plus the split arrow at the lower left, o.g., never hinged, fresh and quite well centered, Very Fine, with a 1923 P.S.E. certificate. Scott \$400 as blocks of 4. Estimate \$250 - 350



4200

- 4200 ★★** 1918, King George V “Admiral”, 3¢ brown, horizontal coil, perf. 8 vertically (Scott 129), strip of 4, o.g., never hinged, fresh and nicely centered, Very Fine, with a 2019 P.S.E. certificate. Unitrade C\$500 (\$370). Scott \$350. Estimate \$250 - 350



4201

- 4201 ★★** 1924, King George V “Admiral”, 3¢ carmine, type I, wet printing, horizontal coil, perf. 8 vertically (Scott 130), strip of 4, o.g., never hinged, fresh and nicely centered, Very Fine, with a 2016 Gratton certificate. Scott \$700. Estimate \$400 - 600



4202



4203



4204



4205



4206

- 4202 ★★田** 1924, King George V “Admiral”, 3¢ carmine, type I, wet printing, horizontal coil, perf. 8 vertically, block of 4 (Scott 130a), an outstanding example of this very rare block, o.g., never hinged, fresh and bright with a right sheet margin and centering identical to that of the illustration in *Unitrade*, Fine to Very Fine. *Only 109 blocks are possible*, with a 2018 P.S.E. certificate. Scott \$2,625. Estimate \$750 - 1,000
- 4203 ★★** 1915, King George V “Admiral”, 2¢ carmine, vertical coil, perf. 12 horizontally (Scott 132), a “perfect” mint single, o.g., never hinged, perfectly fresh and perfectly centered, Superb. *SMQ does not price any grade higher than XF-Sup 95* (\$225), with a 2018 P.S.E. certificate *graded GEM 100*. Unitrade C\$150 (\$110). Scott \$100. Estimate \$150 - 200
- 4204 ★** 1924, King George V “Admiral”, 2¢ yellow green, vertical coil, perf. 12 horizontally (Scott 133), an extraordinary Gem, bright, fresh and mathematically centered within perfectly symmetrical margins, Superb. *SMQ does not price any grade higher than XF-Sup 95* (\$425). Unitrade C\$300 (\$220). Scott \$210. Estimate \$350 - 500
- 4205 ★★田** 1917, 3¢ Confederation (Scott 135), a choice mint block of 4, o.g., never hinged, bright and beautifully centered, Very Fine to Extremely Fine, with a 2018 P.S.E. certificate *graded VF-XF 85*. Unitrade C\$840 as singles (\$620). Scott \$600 as singles. Estimate \$400 - 600
- 4206 (★)** 1917, 3¢ Confederation, imperf (Scott 135a), vertical pair, without gum as issued, large balanced margins, Very Fine to Extremely Fine. *200 pairs recorded*, with a 2019 P.S.E. certificate. Scott \$500. Estimate \$300 - 400

Kelleher offers **telephone bidding** during the auction for clients on a priority basis, so please call us to arrange for phone bidding as soon as possible.



WILLIAM KINNEY "EVEREST" CANADA



4207

4207 ★★

1924, King George V "Admiral", 1¢ yellow, imperf. (Scott 136), lower left corner sheet margin single with inverted type D lathework (40% as usual), o.g., never hinged, with a 1996 Greene Foundation certificate. Unitrade C\$1,050 (\$780). Scott \$70 ++. Estimate \$300 - 400



4208

4208 ★★★/★

1924, King George V "Admiral", 1¢ yellow, imperf (Scott 136), top sheet margin Imprint & Plate No. 180 strip of 7, o.g., lightly hinged in the selvage only, stamps never hinged, Extremely Fine, with 2010 Gratton certificate. Unitrade C\$900 (\$670). Scott \$490+. Estimate \$250 - 350



4209

4209 ★★田

1924, King George V "Admiral", 3¢ carmine, imperf (Scott 138), left sheet margin block of 12 with pyramid guide, o.g., never hinged, fresh and bright with large margins; few very light natural gum wrinkles, Very Fine to Extremely Fine, with a 2022 P.S.E. certificate. Unitrade C\$1,000 (\$740). Scott \$420 as singles. Estimate \$350 - 500



4210

4210 ★★/★田

1924, King George V "Admiral", 3¢ carmine, imperf (Scott 138), a fabulous bottom margin Plate No. 127 block of 8 with full type D lathework, o.g., lightly hinged on the upper right stamp only, Extremely Fine to Superb, with a 2018 P.S.E. certificate graded XF-SUP 95. Unitrade C\$750 (\$560). Scott \$263 as plain pairs. Estimate \$500 - 750



4211

4211 ★

1926, King George V "Admiral", 2¢ on 3¢ carmine (Scott 139), Superb. *SMQ does not price any grade higher than XF-Sup 95 (\$225)*, with a 2020 P.F. certificate graded SUP 98. Unitrade C\$240 (\$180). Scott \$135. Estimate \$300 - 400



4212

- 4212 ★★/★田 1926, King George V “Admiral”, 2¢ on 3¢ carmine (Scott 140), a choice upper right corner sheet margin block of 10 with “...7 944 A T” imprint, o.g., hinged in the selvage only, stamps never hinged, wonderfully fresh and especially well centered, Very Fine to Extremely Fine, with a 2019 P.S.E. certificate. Scott \$675+. Estimate \$200 - 300



4213

- 4213 ★★ 1927, 1¢ Confederation, horizontal pair, imperf vertically (Scott 141b), a choice right sheet margin pair, o.g., never hinged, bright, fresh and perfectly centered, Extremely Fine to Superb. 250 pairs believed to exist, with a 2019 P.S.E. certificate graded XF-SUP 95. Unitrade C\$240 (\$180). Scott \$180. Estimate \$200 - 300



4214

- 4214 ★★ 1927, 1¢ Confederation, vertical pair, imperf horizontally (Scott 141c), o.g., never hinged, fresh and well centered, Very Fine to Extremely Fine. 250 pairs believed to exist, with a 2018 P.S.E. certificate graded VF-XF 85. Unitrade C\$240 (\$180). Scott \$180. Estimate \$200 - 300



4215



4216



4217

- 4215 ★★ 1927, 2¢ Confederation, horizontal pair, imperf vertically (Scott 142b), an outstanding right sheet margin pair, o.g., never hinged, fresh and well centered, Very Fine to Extremely Fine. 250 pairs believed to exist, with a 2019 P.S.E. certificate graded VF-XF 85. Scott \$180. Estimate \$200 - 300
- 4216 ★★ 1927, 2¢ Confederation, vertical pair, imperf horizontally (Scott 142c), an exceptional pair, o.g., never hinged, fresh and perfectly centered, Extremely Fine to Superb. 250 pairs believed to exist, with a 2018 P.S.E. certificate graded XF-SUP 95. Unitrade C\$240 (\$180). Scott \$180. Estimate \$200 - 300
- 4217 ★★ 1927, 3¢ Confederation, imperf pair (Scott 143a), an extraordinary top sheet margin horizontal pair with Plate No. 2 & partial imprint, o.g., never hinged, wonderfully fresh with large balanced margins, Extremely Fine to Superb. 250 pairs believed to exist; a rare positional piece, with a 2022 P.S.E. certificate graded XF-SUP 95. Unitrade C\$240 ++ (\$180). Scott \$180 ++. Estimate \$200 - 300



WILLIAM KINNEY "EVEREST" CANADA



4218

4218 ★★

1927, 3¢ Confederation, horizontal pair, imperf vertically (Scott 143b), o.g., never hinged, bright and fresh; left margin a little close, Fine to Very Fine. *250 pairs believed to exist*, with a 2018 P.S.E. certificate. Scott \$180. Estimate \$200 - 300



4219

4219 ★★田

1927, 3¢ Confederation, imperf vertically (Scott 143b), an exceptional top sheet margin **Plate No. 3 block of 4**, o.g., never hinged, fresh and choice, Extremely Fine to Superb. *250 pairs believed to exist, making this an exceedingly rare plate block*, with a 2020 P.S.E. certificate *graded XF-SUP 95*. Unitrade C\$768 (\$570). Scott \$360 ++. Estimate \$500 - 750

(photo on back cover)



4220

4220 ★★

1927, 5¢ Confederation, imperf (Scott 144a), horizontal pair, o.g., never hinged, exceptionally fresh with large balanced margins, Extremely Fine. *250 pairs believed to exist*, with a 2018 P.S.E. certificate *graded XF 90*. Unitrade C\$240 (\$180). Scott \$180. Estimate \$200 - 300



4221

4221 ★★

1927, 5¢ Confederation, horizontal pair, imperf vertically (Scott 144b), a choice bottom sheet margin pair, o.g., never hinged, beautifully centered with natural straight edge and split arrow at the right, Extremely Fine to Superb. *250 pairs believed to exist*, with a 2019 P.S.E. certificate *graded XF-SUP 95*. Unitrade C\$240+ (\$180). Scott \$180+. Estimate \$200 - 300



4222

4222 ★★

1927, 12¢ Confederation, imperf (Scott 145a), upper right corner sheet margin vertical pair, fresh and bright with large balanced margins; top stamp with a small natural paper wrinkle (called an "internal crease" on the accompanying certificate), Very Fine to Extremely Fine. *250 pairs believed to exist*, with a 2019 P.S.E. certificate *graded VF-XF 85*. Unitrade C\$240 (\$180). Scott \$180. Estimate \$200 - 300



4223

4223 ★★

1927, 12¢ Confederation, vertical pair, imperf horizontally (Scott 145c), a choice pair, o.g., never hinged, fresh and virtually perfectly centered, Extremely Fine to Superb. *250 pairs believed to exist*, with a 2019 P.S.E. certificate *graded XF-SUP 95*. Unitrade C\$240 (\$180). Scott \$180. Estimate \$250 - 350



4224

4224 ★★

1927, 5¢ Thomas D'Arcy McGee, imperf (Scott 146a), an extraordinary lower right corner sheet margin horizontal pair, o.g., never hinged, post office fresh with extra large margins, Extremely Fine. *250 pairs believed to exist*, with a 2018 P.S.E. certificate *graded XF 90 J*. Unitrade C\$240+ (\$180). Scott \$180+. Estimate \$250 - 350



4225

4225 ★★

1927, 5¢ Thomas D'Arcy McGee, horizontal pair, imperf vertically (Scott 146b), a choice pair, o.g., never hinged, wonderfully fresh and virtually perfectly centered, Extremely Fine to Superb. *250 pairs believed to exist*, with a 2018 P.S.E. certificate *graded XF-SUP 95*. Unitrade C\$240 (\$180). Scott \$180. Estimate \$250 - 350



4226

4226 ★★

1927, 12¢ Laurier & McDonald, horizontal pair, imperf vertically (Scott 147b), an exceptional pair, o.g., never hinged, bright and beautifully centered, Extremely Fine. *250 pairs believed to exist*, with a 2018 P.S.E. certificate *graded XF 90*. Unitrade C\$240 (\$180). Scott \$180. Estimate \$200 - 300



4227

4227 ★★/★田

1927, 12¢ Laurier & McDonald, imperf. horizontally (Scott 147c), a choice lower left corner margin **block of 4**, o.g., the left pair never hinged, bright and fresh with large margins, Very Fine to Extremely Fine. *250 pairs are estimated to exist*, with a 2023 P.S.E. certificate *graded VF-XF 85*. Unitrade C\$400 as pairs (\$300). Scott \$300 as pairs. Estimate \$350 - 500

Kelleher offers **telephone bidding** during the auction for clients on a priority basis, so please call us to arrange for phone bidding as soon as possible.



4228

4228 ★★田

1927, 20¢ Baldwin & Lafontaine (Scott 148), top right full pane of 50, plate number A2, o.g., never hinged, a great-looking item, post office fresh and sound with pristine gum and solid to exceptional centering (particularly on the plate block of four), Very Fine overall. Untrade approximately C\$4,505 as plate & singles (\$3,350). Estimate \$1,000 - 1,500



4229

4229 ★★田

1927, 20¢ Baldwin & Lafontaine, imperf. horizontally (Scott 148c), a choice lower right corner margin **block of 4**, o.g., never hinged, fresh and bright with large margins, Extremely Fine. *250 pairs are estimated to exist*, with 2025 P.S.E. certificate graded XF 90. Untrade C\$480 as pairs (\$360). Scott \$360 as pairs. Estimate \$400 - 600



4230

4230 ★★

1928, King George V "Scroll", 1¢ orange, imperforate tête-bêche (Unitrade 149cvi), from booklet production, a lovely, narrow gutter horizontal pair with a wide top sheet margin, o.g., never hinged, large margins and bright color; left stamp with a light horizontal crease (visible only on the back), Very Fine appearance, with a 2020 P.S.E. certificate. Scott 149b var. Estimate \$200 - 300



4231

4231 ★★

1928, King George V "Scroll", 2¢ green, imperf (Scott 150b), horizontal pair, o.g., never hinged, fresh and bright, Extremely Fine. 250 pairs believed to exist, with a 2019 P.S.E. certificate graded XF 90. Unitrade C\$188 (\$140). Scott \$125. Estimate \$200 - 300



4232

4232 ★★田

1928, King George V "Scroll", 2¢ green, imperf (Scott 150b), a pretty left sheet margin block of 4, o.g., never hinged, exceptionally fresh with large margins, Extremely Fine. 250 pairs believed to exist, with a 2020 P.S.E. certificate graded XF 90. Unitrade C\$280 (\$210). Scott \$250+. Estimate \$350 - 500



4233

4233 ★★

1928, King George V "Scroll", 2¢ green, vertical pair, imperf horizontally (Scott 150e), o.g., never hinged, fresh and well centered, Extremely Fine. 250 pairs believed to exist, with a 2018 P.S.E. certificate graded XF 90. Unitrade C\$225 (\$170). Scott \$160. Estimate \$200 - 300



4234

4234 ★★田

1928, King George V "Scroll", 3¢ dark carmine, imperf (Scott 151a), a choice top Plate No. 2 block of 4, o.g., never hinged, Extremely Fine. 250 pairs believed to exist; an exceedingly rare plate block, with a 2020 P.S.E. certificate graded XF 90. Scott \$320 ++. Unitrade C\$720 (\$540). Estimate \$400 - 600



4235

4235 ★★

1929, King George V "Scroll", 4¢ bister, horizontal pair, imperf vertically (Scott 152b), an exceptional bottom sheet margin pair, o.g., never hinged, fresh and beautifully centered, Extremely Fine to Superb. 250 pairs believed to exist, with a 2023 P.S.E. certificate graded XF-SUP 95. Unitrade C\$225 (\$170). Scott \$160. Estimate \$250 - 350



4236

4236 ★★

1928, King George V "Scroll", 5¢ deep violet, imperf (Scott 153b), a choice left sheet margin horizontal pair, o.g., never hinged, post office fresh, Extremely Fine to Superb. 250 pairs believed to exist, with a 2019 P.S.E. certificate graded XF-SUP 95. Unitrade C\$225 (\$170). Scott \$160. Estimate \$200 - 300



4237

4237 ★★

1928, King George V "Scroll", 5¢ deep violet, imperforate tête-bêche (Unitrade 153cvi), from booklet production, a lovely horizontal pair with narrow gutter between, o.g., never hinged, fresh and bright with nice margins, Very Fine, with a 2018 P.S.E. certificate graded VF 80. Scott 153b var. Estimate \$250 - 350



4238



4239



4240

4238 ★★

1928, King George V “Scroll”, 8¢ blue, imperf (Scott 154a), an outstanding horizontal pair, o.g., never hinged, wonderfully fresh with large balanced margins, Extremely Fine. *250 pairs are believed to exist*, with a 2018 P.S.E. certificate *graded XF 90*. Unitrade C\$225 (\$170). Scott \$160. Estimate \$250 - 350

4239 ★★

1928, 10¢ Mt. Hurd, imperf (Scott 155a), a choice vertical pair, o.g., never hinged, bright and fresh, Extremely Fine. *250 pairs are believed to exist*, with a 2023 P.S.E. certificate *graded XF 90*. Unitrade C\$225 (\$170). Scott \$160. Estimate \$200 - 300

4240 ★★

1928, 10¢ Mt. Hurd, horizontal pair, imperf vertically (Scott 155b), o.g., never hinged, fresh and nicely centered, Very Fine. *250 pairs are believed to exist*, with a 2018 P.S.E. certificate *graded VF 80*. Scott \$270. Estimate \$200 - 300



4241



4242



4243

4241 ★★

1928, 10¢ Mt. Hurd, vertical pair, imperf horizontally (Scott 155c), o.g., never hinged, fresh and beautifully centered, Extremely Fine. *250 pairs are believed to exist*, with a 2018 P.S.E. certificate *graded XF 90*. Unitrade C\$375 (\$280). Scott \$270. Estimate \$300 - 400

4242 ★★田

1929, 12¢ Quebec Bridge, imperf (Scott 156a), an exceptional **block of 4**, o.g., never hinged, post office fresh with large balanced margins, Extremely Fine. *250 pairs are believed to exist*, with a 2019 P.S.E. certificate *graded XF 90*. Unitrade C\$750+ (\$560). Scott \$540+. Estimate \$400 - 600

4243 ★★

1929, 12¢ Quebec Bridge, horizontal pair, imperf. vertically (Scott 156b), a gorgeous right sheet margin pair, o.g., never hinged, fresh and perfectly centered; minute natural paper inclusion in the margin between the stamps, Very Fine to Extremely Fine. *Only 250 pairs estimated to have been available*, with a 2021 P.S.E. certificate *graded VF-XF 85* and noting the inclusion. Unitrade C\$335 (\$250). Scott \$270. Estimate \$200 - 300

Kelleher offers **telephone bidding** during the auction for clients on a priority basis, so please call us to arrange for phone bidding as soon as possible.



4244



4245



4246

4244 ★★田

1929, 12c Quebec Bridge, imperf vertically (Scott 156b), o.g., never hinged, fresh and bright, the bottom pair being Very Fine, the bottom Fine to Very Fine. *250 pairs are believed to exist.* Scott \$540+. Estimate \$350 - 500

4245 ★★

1929, 12c Quebec Bridge, vertical pair, imperf horizontally (Scott 156c), top sheet margin pair, o.g., never hinged, fresh and beautifully centered; small, faint crease at the right edge, otherwise Very Fine. *250 pairs are believed to exist,* with a 2018 P.S.E. certificate. Scott \$270. Estimate \$200 - 300

4246 ★★

1929, 20c Harvesting Wheat (Scott 157), a pristine, mathematically centered mint example, o.g., never hinged, Extremely Fine, with a 2015 P.F. certificate *graded XF 90.* SMQ \$165. Scott \$120. Estimate \$150 - 200



4247



4248



4249

4247 ★★

1929, 20c Harvesting Wheat, imperf (Scott 157a), a pretty horizontal pair, o.g., never hinged, bright and fresh, Very Fine to Extremely Fine. *250 pairs are believed to exist,* with a 2023 P.S.E. certificate *graded VF-XF 85.* Scott \$270. Estimate \$200 - 300

4248 ★★田

1929, 20c Harvesting Wheat, imperf. vertically (Scott 157b), a gorgeous left sheet margin **block of 4**, o.g., never hinged, fresh and perfectly centered, Extremely Fine. *250 pair are estimated to exist,* with a 2023 P.S.E. certificate *graded XF 90.* Unitrade C\$750 as pairs (\$560). Scott \$540 as pairs. Estimate \$500 - 750

4249 ★★

1929, 20c Harvesting Wheat, vertical pair, imperf. horizontally (Scott 157c), o.g., never hinged, fresh and nicely centered, Very Fine. *250 pairs are believed to exist.* Scott \$270. Estimate \$200 - 300



4250

4250 ★★

1929, 50c Bluenose (Scott 158), o.g., never hinged, fresh and mathematically centered; single, slightly nibbed perf at the left, Very Fine, with a 2020 P.S.E. certificate *graded VF 80* despite noting the perf. Scott \$490. Estimate \$200 - 300



4251

4251 ★★

1929, 50c Bluenose, imperf (Scott 158a), a lovely, nicely margined horizontal pair, o.g., never hinged, bright and fresh, Very Fine. 250 pairs are believed to exist, with a 2018 P.S.E. certificate graded *VF 80*. Scott \$1,125. Estimate \$750 - 1,000



4252

4252 ★★

1929, 50c Bluenose, imperf (Scott 158a), an exceptional vertical pair, o.g., never hinged, post office fresh and with beautifully balanced margins, Extremely Fine. 250 pairs are believed to exist, with a 2024 P.S.E. certificate graded *XF 90*. Unitrade C\$1,500 (\$1,110). Scott \$1,125. Estimate \$800 - 1,200



4253

4253 ★★

1929, 50c Bluenose, vertical pair, imperf horizontally (Scott 158c), a choice bottom sheet margin pair, o.g., never hinged, fresh and beautifully centered, Extremely Fine. 250 pairs are believed to exist, with a 2019 P.S.E. certificate graded *XF 90*. Unitrade C\$1,500 (\$1,110). Scott \$1,125. Estimate \$1,000 - 1,500

(photo on back cover)



4254

4254 ★★

1929, \$1 Parliament (Scott 159), a gorgeous, beautifully centered mint single, o.g., never hinged, Extremely Fine, with a 2018 P.S.E. certificate graded *XF 90* noting "tiny black adhesions on the gum". Unitrade C\$900 (\$670). Scott \$600. Estimate \$400 - 600



4255

4255 ★★

1929, \$1 Parliament, imperf (Scott 159a), a lovely vertical pair, o.g., never hinged, large balanced margins; bottom stamp with a light natural paper wrinkle, Very Fine. 250 pairs are believed to exist, with a 2020 P.S.E. certificate graded *VF 80*. Scott \$975. Estimate \$600 - 800



4256

4256 ★★

1929, \$1 Parliament, imperf (Scott 159a), an outstanding horizontal pair, o.g., never hinged, fresh and choice, Extremely Fine to Superb. 250 pairs are believed to exist, with a 2018 P.S.E. certificate graded *XF-SUP 95*. Unitrade C\$1,350 (\$1,000). Scott \$975. Estimate \$1,200 - 1,800



4257

4257 ★★

1929, \$1 Parliament, horizontal pair, imperf vertically (Scott 159b), horizontal pair, o.g., never hinged, nicely centered; except the right margin a bit close, Fine to Very Fine. *250 pairs are believed to exist*, with a 2019 P.S.E. certificate. Scott \$975. Estimate \$600 - 800



4258

4258 ★★

1929, \$1 Parliament, vertical pair, imperf horizontally (Scott 159c), an extraordinary upper left corner sheet margin pair, o.g., never hinged, post office fresh and beautifully centered, Extremely Fine to Superb. *250 pairs are believed to exist*, with a 2019 P.S.E. certificate *graded XF-SUP 95*. Unitrade C\$1,350 (\$1,000). Scott \$975. Estimate \$1,200 - 1,800

(photo on back cover)



4259

4259 (★)

1930, 10c Library of Parliament, imperf (Scott 173a), large-margined pair with partial right sheet margin, without gum, fresh and attractive; small hinge thin and "each stamp with a tiny blue pen mark," per the accompanying certificate, Extremely Fine appearance. *Only 50 pairs exist*, with a 2020 P.S.E. certificate. Scott \$1,500. Estimate \$350 - 500



4260

4260 ★★

1930, 12c Quebec Citadel, imperf (Scott 174a), a gorgeous left sheet margin horizontal, o.g., never hinged, beautifully balanced margins; gum somewhat toned, though not mentioned on the certificate, Extremely Fine. *Only 75 pairs exist*, with a 2021 P.S.E. certificate *graded XF 90*. Unitrade C\$1,875 (\$1,390). Scott \$1,450. Estimate \$1,000 - 1,500



4261

4261 ★★

1930, 20c Harvesting Wheat, imperf (Scott 175a), an extraordinary vertical pair, o.g., never hinged, large balanced margins and incredible color, Extremely Fine to Superb. *Only 75 pairs exist*, with a 2021 P.S.E. certificate *graded XF-SUP 95*. Unitrade C\$1,875 (\$1,390). Scott \$1,450. Estimate \$1,500 - 2,000



4262

4262 ★★

1930, 50c Grand Pré (Scott 176), o.g., never hinged, bright, fresh and beautifully centered, with a 2014 P.F. certificate *graded VF-XF 85*. SMQ **VF-XF 85**; \$425. Scott \$420. Estimate \$300 - 400



4263

4263 ★★

1930, 50¢ Grand Pré imperf (Scott 176a), a choice top sheet margin vertical pair, o.g., never hinged, bright and fresh with beautifully balanced margins, Extremely Fine. *Only 75 pairs exist*, with a 2020 P.S.E. certificate *graded XF 90*. Unitrade C\$1,875 (\$1,390). Scott \$1,450. Estimate \$1,200 - 1,800

(photo on back cover)



4264

4264 ★★

1930, \$1 Mt. Cavell (Scott 177), a choice, virtually perfectly centered mint example, o.g., never hinged, Extremely Fine, with a 2015 P.F. certificate *graded XF 90*. SMQ **XF 90**; \$525. Scott \$420. Estimate \$400 - 600



4265

4265 ★★

1930, \$1 Mt. Cavell, imperf (Scott 177a), a lovely top sheet margin horizontal pair, o.g., never hinged, large, nicely balanced margins, Very Fine to Extremely Fine, with a 2018 P.S.E. certificate *graded VF-XF 85*. Unitrade C\$1,875 (\$1,390). Scott \$1,450. Estimate \$1,000 - 1,500



4266

4266 ★★

1930, \$1 Mt. Cavell, imperf (Scott 177a), an outstanding top sheet margin vertical pair, o.g., never hinged, deep, rich color and large, beautifully balanced margins, Extremely Fine, with a 2021 P.S.E. certificate *graded XF 90*. Unitrade C\$1,875 (\$1,390). Scott \$1,450. Estimate \$1,200 - 1,800

(photo on back cover)



4267

4267 ★★田

1931, King George V "Admiral", 3¢ carmine, perf. 12 x 8 (Scott 184), a marvelous upper right **Plate No. A-13 block of 20**, o.g., never hinged, wonderfully fresh and well centered, Very Fine. Unitrade C\$312 (\$230). Estimate \$200 - 300



4268

4268 ★★

1931, 10¢ Sir Georges Cartier, imperf (Scott 190a), a choice horizontal pair, o.g., never hinged, Extremely Fine. *Only 150 pairs were issued*, with a 2019 P.S.E. certificate *graded XF 90*. Unitrade C\$1,300 (\$970). Scott \$900. Estimate \$750 - 1,000



4269

4269 ★★田

1931, 10¢ Sir Georges Cartier, imperf (Scott 190a), an outstanding bottom sheet margin **block of 4**, o.g., never hinged, bright and fresh, Extremely Fine. *No more than 75 blocks could exist*, with a 2019 P.S.E. certificate *graded XF 90*. Unitrade C\$2,600+ (\$1,930). Scott \$1,800+. Estimate \$1,500 - 2,000



4270

4270 ★★

1932, King George V “Medallion”, 1¢ dark green, imperf (Scott 195c), a lovely horizontal pair, o.g., never hinged, bright and fresh with perfectly balanced margins, Extremely Fine. *Only 150 pairs were available*, with a 2021 P.S.E. certificate *graded XF 90*. Unitrade C\$700 (\$520). Scott \$375. Estimate \$400 - 600



4271

4271 ★★

1932, King George V “Medallion”, 2¢ black brown, imperf (Scott 196c), horizontal pair, o.g., never hinged, fresh and bright, Extremely Fine. *Only 150 pairs were available*, with a 2021 P.S.E. certificate *graded XF 90*. Unitrade C\$700 (\$520). Scott \$375. Estimate \$400 - 600



4272

4272 ★★田

1932, King George V “Medallion”, 2¢ black brown, imperf (Scott 196c), a pretty lower right corner margin **block of 4**, o.g., never hinged, Extremely Fine. *Only 150 pairs were available*, with a 2024 P.S.E. certificate *graded XF 90*. Unitrade C\$1,400 as pairs (\$1,040). Scott \$750 as pairs. Estimate \$800 - 1,200



4273

4273 ★★

1932, King George V “Medallion”, 3¢ deep red, type I, imperf (Scott 197b), an exceptional horizontal pair, o.g., never hinged, bright and fresh with large balanced margins, Extremely Fine. *Only 150 pairs were available*, with a 2021 P.S.E. certificate *graded XF 90*. Unitrade C\$700 (\$520). Scott \$375. Estimate \$400 - 600



4274

4274 ★★田

1932, King George V “Medallion”, 3¢ deep red, type I, imperf (Scott 197b), a pretty upper right corner margin **block of 4**, o.g., never hinged, bright and fresh, the left margin a bit close, Fine to Very Fine. *Only 150 pairs were available*, with a 2024 P.S.E. certificate. Scott \$750 as pairs. Estimate \$400 - 600



WILLIAM KINNEY “EVEREST” CANADA



4275



4276



4277

4275 ★★

1932, King George V “Medallion”, 4¢ ocher, imperf. pair (Scott 198a), a choice bottom sheet margin horizontal pair, o.g., never hinged, bright and fresh with large margins, Extremely Fine. *Only 150 pairs were available*, with a 2021 P.S.E. certificate *graded XF 90*. Unitrade C\$700 (\$520). Scott \$375. Estimate \$400 - 600

4276 ★

1932, King George V “Medallion”, 5¢ dark blue, horizontal pair, imperf vertically (Scott 199a), a lovely pair with a full left sheet margin, o.g., barely hinged, fresh and virtually perfectly centered, Extremely Fine. *Only 50 pairs exist*, with a 2023 P.S.E. certificate *graded XF 90*. Scott \$1,400. Estimate \$800 - 1,200

4277 ★★

1932, King George V “Medallion”, 5¢ dark blue, horizontal pair, imperf. vertically (Scott 199a), a lovely right sheet margin pair, o.g., never hinged, incredibly fresh and beautifully centered, Very Fine to Extremely Fine. *One of only 50 pairs produced*, with a 2021 P.S.E. certificate *graded VF-XF 85*. Unitrade C\$3,500 (\$2,600). Scott \$2,450. Estimate \$1,500 - 2,000

(photo on back cover)



4278



4279



4280

4278 ★★

1932, King George V “Medallion”, 5¢ dark blue, imperf (Scott 199b), a lovely horizontal pair, o.g., never hinged, bright and fresh with ample to large margins, Very Fine. *Only 150 pairs were available*, with a 2021 P.S.E. certificate *graded VF 80*. Scott \$375. Estimate \$250 - 350

4279 ★★

1932, Quebec Citadel, 13¢ dull violet, imperf (Scott 201a), a choice bottom sheet margin horizontal pair, o.g., never hinged, fresh and bright with large margins, Extremely Fine. *Only 100 pairs produced*, with a 2019 P.S.E. certificate *graded XF 90*. Unitrade C\$1,750 (\$1,300). Scott \$1,200. Estimate \$1,000 - 1,500

4280 ★★

1933, 5¢ U.P.U. Meeting, imperf (Scott 202a), a lovely bottom sheet margin vertical pair, o.g., never hinged, Extremely Fine. *Only 75 pairs produced*, with a 2014 Gratton certificate as Extremely Fine. Unitrade C\$1,600 (\$1,190). Scott \$1,100. Estimate \$750 - 1,000



4281



4282



4283

4281 ★★

1933, 20¢ Grain Exhibition, imperf (Scott 203a), a lovely top sheet margin vertical pair, o.g., never hinged, bright and fresh; tiny gum disturbance, Very Fine to Extremely Fine, with a 2019 P.S.E. certificate *graded VF-XF 85* noting the gum disturbance. Scott \$1,100. Estimate \$500 - 750

4282 ★★

1933, 5¢ Steamship *Royal William*, imperf (Scott 204a), a choice vertical pair, o.g., never hinged, post office fresh with large balanced margins, Extremely Fine to Superb. *Only 75 pairs issued*, with a 2022 P.S.E. certificate *graded XF-SUP 95*. Unitrade C\$1,600 (\$1,190). Scott \$1,100. Estimate \$1,000 - 1,500

4283 ★★

1934, 3¢ Jacques Cartier, imperf (Scott 208a), a fresh, well-margined horizontal pair, o.g., never hinged, Very Fine to Extremely Fine, with a 2020 P.S.E. certificate *graded VF-XF 85*. Scott \$1,100. Estimate \$750 - 1,000



4284

4284 P

1934, 10¢ United Empire Loyalists, large die proof (Scott 209), sound with deep color and sharp detail, affixed to British American Bank Note Co., Ltd. archive card with violet double-oval “May 8 1934/Ottawa, - Ont.” handstamp on reverse, Very Fine, with 1981 Greene Foundation (as proof) and 2021 P.S.E. (as imperforate single on card) certificates. Estimate \$500 - 750



WILLIAM KINNEY "EVEREST" CANADA



4285

4285 ★★

1934, 10¢ United Empire Loyalists, imperf (Scott 209a), an incredible left sheet margin horizontal pair, o.g., never hinged, huge balanced margins, Superb. *An extraordinary example of this rare imperf; of which no more than 50 pairs are possible*, with a 2021 P.S.E. certificate graded SUP 98. Unitrade C\$2,000 (\$1,490). Scott \$1,400. Estimate \$1,200 - 1,800



4286

4286 ★★

1934, 10¢ United Empire Loyalists, imperf (Scott 209a), a choice bottom sheet margin vertical pair, o.g., never hinged, exceptionally fresh and bright, Extremely Fine. *Only 50 pairs produced*, with a 2023 P.S.E. certificate graded XF 90. Unitrade C\$3,500 (\$2,600). Scott \$2,450. Estimate \$1,500 - 2,000



4287

4287 ★★

1934, 2¢ New Brunswick, imperf (Scott 210a), an outstanding bottom sheet margin horizontal pair, o.g., never hinged, exceptionally fresh with large, beautifully balanced margins, Extremely Fine to Superb. *Only 80 pairs produced*, with a 2019 P.S.E. certificate graded XF-SUP 95. Unitrade C\$1,488 (\$1,110). Scott \$1,050. Estimate \$1,000 - 1,500



4288

4288 ★★

1935, 1¢ Princess Elizabeth, imperf (Scott 211a), a gorgeous horizontal pair, o.g., never hinged, exceptionally fresh with large balanced margins, Extremely Fine. *Only 100 pairs were available*, with a 2023 P.S.E. certificate graded XF 90. Unitrade C\$600 (\$450). Scott \$425. Estimate \$300 - 400



4289

4289 ★★

1935, 2¢ Duke of York (Scott 212), a Perfect mint example, o.g., never hinged, Superb. *The image says it all*; with a 2016 P.S.E. certificate graded GEM 100. SMQ \$200. Estimate \$200 - 300



4290

4290 ★★

1935, 2¢ Duke of York, imperf (Scott 212a), an exceptional horizontal pair, o.g., never hinged, post office fresh with large balanced margins, Extremely Fine to Superb. *Only 100 pairs produced*, with a 2023 P.S.E. certificate graded XF-SUP 95. Unitrade C\$600 (\$450). Scott \$425. Estimate \$400 - 600



4291

4291 ★★

1935, 3¢ King George V and Queen Mary, imperf (Scott 213a), a gorgeous vertical pair, o.g., never hinged, bright and fresh with generous, perfectly balanced margins, Extremely Fine to Superb. *Only 130 pairs produced*, with a 2019 P.S.E. certificate graded XF-SUP 95. Unitrade C\$600 (\$450). Scott \$425. Estimate \$400 - 600



4292

- 4292 ★★ 1935, 3¢ King George V and Queen Mary, imperf (Scott 213a), an exceptional right sheet margin horizontal pair, o.g., never hinged, fresh and bright with large margins, Extremely Fine. *Only 100 pairs were available*, with a 2018 P.S.E. certificate graded XF 90. Unitrade C\$600 (\$450). Scott \$425. Estimate \$300 - 400



4293

- 4293 ★★ 1935, 5¢ Prince of Wales, imperf (Scott 214a), a extraordinary upper left corner margin horizontal pair, o.g., never hinged, post office fresh, Extremely Fine to Superb. *Only 100 pairs produced*, with a 2021 P.S.E. certificate graded XF-Sup 95. Unitrade C\$600 (\$450). Scott \$425. Estimate \$400 - 600



4294

- 4294 ★★ 1935, 10¢ Windsor Castle, imperf (Scott 215a), a phenomenal vertical pair, o.g., never hinged, fresh and choice with large, perfectly balanced margins, Extremely Fine to Superb. *Only 130 pairs produced*, with a 2018 P.S.E. certificate graded XF-SUP 95. Unitrade C\$600 (\$450). Scott \$425. Estimate \$400 - 600



4295

- 4295 ★★ 1935, 10¢ Windsor Castle, imperf (Scott 215a), a choice right sheet margin horizontal pair, o.g., never hinged, bright and fresh with large margins, Very Fine to Extremely Fine. *Only 130 pairs produced*, with a 2019 P.S.E. certificate graded XF 90. Unitrade C\$600 (\$450). Scott \$425. Estimate \$350 - 500



4296

- 4296 ★★ 1935, 13¢ Royal Yacht *Britannia*, imperf (Scott 216b), an exceptional vertical pair, o.g., never hinged, post office fresh with large balanced margins, Extremely Fine. *Only 150 pairs produced*, with a 2018 P.S.E. certificate graded XF 90. Unitrade C\$600 (\$450). Scott \$425. Estimate \$350 - 500



4297

- 4297 ★★ 1935, King George V, 1¢ green, imperf (Scott 217c), a marvelous horizontal pair, o.g., never hinged, bright color and large margins, Extremely Fine. *Only 150 pairs were available*, with a 2023 P.S.E. certificate graded XF 90. Unitrade C\$450 (\$330). Scott \$375. Estimate \$250 - 350



4298

- 4298 ★★ 1935, King George V, 2¢ brown, imperf (Scott 218c), a choice bottom sheet margin horizontal pair, o.g., never hinged, bright and fresh with large margins, Very Fine to Extremely Fine. *Only 150 pairs were available*, with a 2023 P.S.E. certificate graded VF-XF 85. Unitrade C\$450 (\$330). Scott \$375. Estimate \$250 - 350



WILLIAM KINNEY "EVEREST" CANADA



4299



4300



4301



4302

- 4299 ★★** 1935, King George V, 3¢ dark carmine (Scott 219), a "Top-of-the-Pop"—literally—*Jumbo*, o.g., never hinged, fresh and precisely centered amid huge, perfectly symmetrical margins, Superb. *SMQ prices no grade higher than XF-Sup 95*, with a 2024 P.S.E. certificate *graded GEM 100 J*. Unitrade C\$1 (\$0). Scott \$1. Estimate \$200 - 300
- 4300 ★★** 1935, King George V, 3¢ dark carmine, imperf (Scott 219b), a lovely bottom sheet margin horizontal pair, o.g., never hinged, bright and fresh with large margins, Very Fine to Extremely Fine. *Only 150 pairs were available*, with a 2023 P.S.E. certificate *graded VF-XF 85*. Unitrade C\$450 (\$330). Scott \$375. Estimate \$250 - 350
- 4301 ★★** 1935, King George V, 4¢ yellowish orange, imperf (Scott 220a), a gorgeous horizontal pair, o.g., never hinged, large balanced margins and brilliant color, Extremely Fine to Superb. *Only 150 pairs produced*, with a 2023 P.S.E. certificate *graded XF-SUP 95*. Unitrade C\$450 (\$330). Scott \$375. Estimate \$300 - 400
- 4302 ★★** 1935, King George V, 4¢ yellowish orange, imperf (Scott 220a), an exceptional right sheet margin vertical pair, o.g., never hinged, fresh and bright with generous, beautifully balanced margins, Extremely Fine to Superb. *Only 150 pairs produced*, with a 2018 P.S.E. certificate *graded XF-SUP 95*. Unitrade C\$450 (\$330). Scott \$375. Estimate \$300 - 400



4303



4304



4305

- 4303 ★★田** 1935, King George V, 5¢ blue, horizontal pair, imperf vertically (Scott 221a), a gorgeous **block of 4**, o.g., never hinged, incredibly fresh and nicely centered, Fine to Very Fine. *Only 150 pairs were available*, with a 2024 P.S.E. certificate. Unitrade C\$900 (\$670). Scott \$600. Estimate \$350 - 500
- 4304 ★★** 1935, King George V, 5¢ blue, imperf (Scott 221b), a extraordinary horizontal pair, o.g., never hinged, bright and fresh with large, perfectly balanced margins, Extremely Fine. *Only 150 pairs were available*, with a 2023 P.S.E. certificate *graded XF 90*. Unitrade C\$450 (\$330). Scott \$375. Estimate \$250 - 350
- 4305 ★★** 1935, King George V, 8¢ deep orange, imperf (Scott 222a), a marvelous horizontal pair, o.g., never hinged, large balanced margins and fabulous color, Very Fine to Extremely Fine. *Only 150 pairs were available*, with a 2023 P.S.E. certificate *graded VF-XF 85*. Unitrade C\$450 (\$330). Scott \$375. Estimate \$500 - 750



4306

4306 ★★

1935, 10¢ Mounted Police, imperf (Scott 223a), a marvelous horizontal pair, o.g., never hinged, wonderfully fresh with ample margins and bright color, Extremely Fine. *No more than 150 pairs are possible*, with a 2025 P.S.E. certificate graded *XF 90*. Unitrade C\$600 (\$450). Scott \$375. Estimate \$300 - 400



4307

4307 ★★

1935, 13¢ Charlottetown Conference, imperf (Scott 224a), a choice upper right corner sheet margin vertical pair, o.g., never hinged, bright and fresh with large margins, Extremely Fine to Superb. *Only 150 pairs produced*, with a 2019 P.S.E. certificate graded *XF-SUP 95*. Unitrade C\$600 (\$450). Scott \$375. Estimate \$400 - 600



4308

4308 ★★

1935, 20¢ Niagara Falls, imperf (Scott 225a), a gorgeous vertical pair, o.g., never hinged, Extremely Fine to Superb. *Only 150 pairs produced*, with a 2020 P.S.E. certificate graded *XF-SUP 95*. Unitrade C\$600 (\$450). Scott \$375. Estimate \$400 - 600



4309

4309 ★★

1935, 50¢ Parliament Buildings in Victoria B.C., imperf (Scott 226a), an immaculate vertical pair, o.g., never hinged, post office fresh with large, perfectly balanced margins, Extremely Fine to Superb. *Only 150 pairs produced*, with a 2020 P.S.E. certificate graded *XF-SUP 95*. Unitrade C\$600 (\$450). Scott \$375. Estimate \$400 - 600



4310

4310 ★★田

1935, 50¢ Parliament Buildings in Victoria B.C., imperf (Scott 226a), an extraordinary top sheet margin **block of 4 with Plate No. 1** and partial imprint, o.g., never hinged, wonderfully fresh with large, perfectly balanced margins, Extremely Fine to Superb. *Only six plate number blocks can exist*, with a 2019 P.S.E. certificate graded *XF-SUP 95*. Unitrade C\$3,000 for a block of 6 (\$2,230). Scott \$550 ++. Estimate \$2,000 - 3,000

(photo on back cover)



4311

4311 ★★

1935, \$1 Champlain Monument, imperf (Scott 227a), a choice vertical pair, o.g., never hinged, bright and fresh with large balanced margins and fabulous color, Extremely Fine. *No more than 150 pairs are possible*, with a 2023 P.S.E. certificate *graded XF 90*. Unitrade C\$750 (\$560). Scott \$475. Estimate \$400 - 600



4312

4312 ★★

1937, King George VI, 1c green, imperf (Scott 231c), a gorgeous horizontal pair, o.g., never hinged, bright and fresh with large, perfectly balanced margins, Extremely Fine. *Only 100 pairs were available*, with a 2021 P.S.E. certificate *graded XF 90*. Unitrade C\$600 (\$450). Scott \$415. Estimate \$300 - 400



4313

4313 ★★

1937, King George VI, 2c brown, imperf (Scott 232c), choice horizontal pair, o.g., never hinged, post office fresh with generous perfectly balanced margins, Extremely Fine. *Only 100 pairs were available*, with a 2024 P.S.E. certificate *graded XF 90*. Unitrade C\$600 (\$450). Scott \$415. Estimate \$300 - 400



4314

4314 ★★

1937, King George VI, 3c carmine, imperf (Scott 233b), an exquisite horizontal pair, o.g., never hinged, post office fresh with large, beautifully balanced margins, Extremely Fine to Superb. *Only 150 pairs produced*, with a 2022 P.S.E. certificate *graded XF-SUP 95*. Unitrade C\$600 (\$450). Scott \$415. Estimate \$400 - 600

KING GEORGE VI ISSUES

4312 ★★

1937, King George VI, 1c green, imperf (Scott 231c), a gorgeous horizontal pair, o.g., never hinged, bright and fresh with large, perfectly balanced margins, Extremely Fine. *Only 100 pairs were available*, with a 2021 P.S.E. certificate *graded XF 90*. Unitrade C\$600 (\$450). Scott \$415. Estimate \$300 - 400

4313 ★★

1937, King George VI, 2c brown, imperf (Scott 232c), choice horizontal pair, o.g., never hinged, post office fresh with generous perfectly balanced margins, Extremely Fine. *Only 100 pairs were available*, with a 2024 P.S.E. certificate *graded XF 90*. Unitrade C\$600 (\$450). Scott \$415. Estimate \$300 - 400

4314 ★★

1937, King George VI, 3c carmine, imperf (Scott 233b), an exquisite horizontal pair, o.g., never hinged, post office fresh with large, beautifully balanced margins, Extremely Fine to Superb. *Only 150 pairs produced*, with a 2022 P.S.E. certificate *graded XF-SUP 95*. Unitrade C\$600 (\$450). Scott \$415. Estimate \$400 - 600



4315

4315 ★★

1937, King George VI, 4c yellow, imperf (Scott 234a), a gorgeous left sheet margin horizontal pair, o.g., never hinged, large margins and blazing color, Very Fine to Extremely Fine. *Only 100 pairs were available*, with a 2024 P.S.E. certificate *graded VF-XF 85*. Unitrade C\$600 (\$450). Scott \$415. Estimate \$300 - 400



4316

4316 ★★

1937, King George VI, 5c blue, imperf (Scott 235a), o.g., never hinged, fresh and bright with generous, perfectly balanced margins and phenomenal color, Extremely Fine. *Only 100 pairs were available*, with a 2024 P.S.E. certificate *graded XF 90*. Unitrade C\$600 (\$450). Scott \$415. Estimate \$300 - 400



4317

4317 ★★

1937, King George VI, 8c orange, imperf (Scott 236a), a choice horizontal pair, o.g., never hinged, large, beautifully balanced margins and gorgeous color, Extremely Fine to Superb. *Only 150 pairs produced*, with a 2022 P.S.E. certificate *graded XF-SUP 95*. Unitrade C\$600 (\$450). Scott \$415. Estimate \$400 - 600

Kelleher offers **telephone bidding** during the auction for clients on a priority basis, so please call us to arrange for phone bidding as soon as possible.



4318

4318 ★★

1937, 3¢ King George VI Coronation, imperf (Scott 237a), a lovely left sheet margin horizontal pair, o.g., never hinged, bright and fresh with large margins, Extremely Fine. *No more than 75 pairs are possible*, with a 2018 P.S.E. certificate graded XF 90. Unitrade C\$1,200 (\$890). Scott \$800. Estimate \$600 - 800



EX 4319

4319 P

1938 Pictorials, 10¢, 20¢, 50¢ & \$1 plate proof on India on card (Scott 241P, 243P-245P), a choice set of horizontal pairs with vertical gutter between, bright and fresh with large balanced margins, Very Fine-Extremely Fine or Extremely Fine, each with a graded 2018 P.S.E. certificate, the 10 & \$1 VF-XF 85, the 20 & 50 XF 90. Unitrade C\$1,200 for plain pairs (\$890). Estimate \$800 - 1,200



4320

4320 ★★

1938, 10¢ Memorial Chamber, dark carmine, imperf (Scott 241b), an exceptional horizontal pair, o.g., never hinged, fresh and bright with large balanced margins, Extremely Fine. *No more than 75 pairs are possible*, with a 2020 P.S.E. certificate graded XF 90. Unitrade C\$1,125 (\$840). Scott \$750. Estimate \$600 - 800



4321

4321 ★★

1938, 13¢ Halifax Harbor (Scott 242), a truly extraordinary mint single, o.g., never hinged, post office fresh and precisely centered amid generous, perfectly balanced margins, Superb, with a 2025 P.S.E. certificate graded GEM 100. Unitrade C\$30 (\$20). SMQ \$225. Scott \$21. Estimate \$250 - 350



4322

4322 ★★

1938, 13¢ Halifax Harbor, imperf (Scott 242a), a choice vertical pair, o.g., never hinged, bright and fresh with large, perfectly balanced margins, Extremely Fine to Superb. *Only 75 pairs produced*, with a 2019 P.S.E. certificate graded XF-SUP 95. Unitrade C\$1,125 (\$840). Scott \$750. Estimate \$750 - 1,000



4323

4323 ★★

1938, 20¢ Fort Garry Gate, imperf (Scott 243a), a fresh, large-margined vertical pair, o.g., never hinged, Extremely Fine. *No more than 75 pairs are possible*, with a 2019 P.S.E. certificate graded XF 90. Unitrade C\$1,125 (\$840). Scott \$750. Estimate \$600 - 800



4324

4324 ★★

1938, 50¢ Vancouver Harbor, imperf (Scott 244a), a choice vertical pair, o.g., never hinged, fresh and bright with large, perfectly balanced margins, Extremely Fine to Superb. *Only 75 pairs produced*, with a 2020 P.S.E. certificate graded XF-SUP 95. Unitrade C\$1,125 (\$840). Scott \$750. Estimate \$750 - 1,000



4325

4325 ★★

1938, \$1 Château de Ramezay (Scott 245), a phenomenal mint example, o.g., never hinged, post office fresh and absolutely perfectly centered within generous, beautifully balanced margins, Superb, with a 2020 P.S.E. certificate *graded SUP 98*. Unitrade C\$150 (\$110). SMQ \$572. Scott \$110. Estimate \$350 - 500



4326

4326 ★★

1938, \$1 Château de Ramezay, imperf (Scott 245b), an extraordinary vertical pair with upper right corner sheet margin and split arrow, o.g., never hinged, bright, fresh and choice in all respects, Extremely Fine to Superb. *Only 75 pairs produced*, with a 2021 P.S.E. certificate *graded XF-SUP 95*. Unitrade C\$1,500 (\$1,110). Scott \$1,000. Estimate \$1,000 - 1,500



4327

4327 ★★

1939, 1c Royal Visit, imperf (Scott 246a), a choice left sheet margin horizontal pair, o.g., never hinged, bright and fresh with huge margins, Extremely Fine to Superb. *Only 100 pairs produced*, with a 2019 P.S.E. certificate *graded XF-SUP 95*. Unitrade C\$1,050 (\$780). Scott \$725. Estimate \$750 - 1,000



4328

4328 ★★

1939, 3c Royal Visit, imperf (Scott 248a), a marvelous left sheet margin horizontal pair, o.g., never hinged, bright and fresh with huge margins, Extremely Fine to Superb. *Only 100 pairs produced*, with a 2019 P.S.E. certificate *graded XF-SUP 95*. Unitrade C\$1,050 (\$780). Scott \$725. Estimate \$750 - 1,000



4329

4329 ★★

1939, 3c Royal Visit, imperf (Scott 248a), a beautiful, large-margined vertical pair, o.g., never hinged, bright and fresh, Extremely Fine. *No more than 100 pairs are possible*, with a 2018 P.S.E. certificate *graded XF 90*. Unitrade C\$1,050 (\$780). Scott \$725. Estimate \$500 - 750



4330

4330 ★★

1942, King George VI, 1c green (Scott 249), a spectacular mint single, o.g., never hinged, incredibly fresh and precisely centered amid large, beautifully balanced margins, Superb, with a 2017 P.S.E. certificate *graded GEM 100*. Scott \$1. Unitrade C\$1 (\$0). SMQ \$100. Estimate \$200 - 300



4331

4331 ★★

1942, King George VI, 1c green, imperf (Scott 249d), a choice horizontal pair, o.g., never hinged, bright and fresh with large balanced margins, Very Fine to Extremely Fine. *Only 150 pairs were available*, with a 2024 P.S.E. certificate *graded VF-XF 85*. Unitrade C\$600 (\$450). Scott \$400. Estimate \$300 - 400



4332

4332 ★★

1942, King George VI, 2¢ brown, imperf (Scott 250c), an exceptional horizontal pair, o.g., never hinged, exceptionally fresh with large, perfectly symmetrical margins, Extremely Fine. *Only 150 pairs were available*, with a 2024 P.S.E. certificate graded *XF 90*. Unitrade C\$600 (\$450). Scott \$400. Estimate \$300 - 400



4333

4333 ★★

1942, King George VI, 3¢ dark carmine, imperf (Scott 251b), a choice horizontal pair, o.g., never hinged, fresh and bright with large, perfectly balanced margins, Extremely Fine to Superb. *Only 150 pairs produced*, with a 2023 P.S.E. certificate graded *XF-SUP 95*. Unitrade C\$600 (\$450). Scott \$400. Estimate \$400 - 600



4334

4334 ★★

1943, King George VI, 3¢ rose violet, imperf (Scott 252d), an outstanding horizontal pair, o.g., never hinged, with large balanced margins and exceptional color, Extremely Fine. *Only 150 pairs were available*, with a 2024 P.S.E. certificate graded *XF 90*. Unitrade C\$600 (\$450). Scott \$400. Estimate \$300 - 400



4335

4335 ★★

1942, 4¢ Grain Elevators, imperf (Scott 253a), a gorgeous vertical pair, o.g., never hinged, post office fresh with ample, perfectly balanced margins, Extremely Fine to Superb. *Only 150 pairs produced*, with a 2020 P.S.E. certificate graded *XF-SUP 95*. Unitrade C\$600 (\$450). Scott \$400. Estimate \$400 - 600



4336

4336 ★★

1943, King George VI, 4¢ dark carmine, imperf (Scott 254c), an immaculate horizontal pair, o.g., never hinged, post office fresh with ample, perfectly balanced margins, Extremely Fine. *Only 150 pairs were available*, with a 2024 P.S.E. certificate graded *XF 90*. Unitrade C\$600 (\$450). Scott \$400. Estimate \$300 - 400



4337

4337 ★★

1942, King George VI, 5¢ deep blue, imperf (Scott 255a), a pretty horizontal pair, o.g., never hinged, bright and fresh with large, nicely balanced margins, Very Fine to Extremely Fine. *Only 150 pairs were available*, with a 2024 P.S.E. certificate graded *VF-XF 85*. Unitrade C\$600 (\$450). Scott \$400. Estimate \$300 - 400



4338

4338 ★★

1942, 8¢ Farm, imperf (Scott 256a), a marvelous vertical pair, o.g., never hinged, wonderfully fresh with large, perfectly balanced margins, Extremely Fine to Superb, with a 2020 P.S.E. certificate graded *XF-SUP 95*. Unitrade C\$600 (\$450). Scott \$400. Estimate \$400 - 600



4339

4339 ★★

1942, 20¢ Corvette, imperf (Scott 260a), a choice vertical pair, o.g., never hinged, fresh and bright with large balanced margins, Very Fine to Extremely Fine, with a 2021 P.S.E. certificate graded *VF-XF 85*. Unitrade C\$900 (\$670). Scott \$600. Estimate \$400 - 600



4340



4341



4342

4340 ★★

1942, 50¢ Munitions (Scott 261), a *Perfect* mint single, o.g., never hinged, perfectly fresh and perfectly centered with large, perfectly balanced margins, Superb, with a 2017 P.S.E. certificate *graded GEM 100*. Unitrade C\$60 (\$40). SMQ \$405. Scott \$40. Estimate \$350 - 500

4341 ★★

1942, \$1 Destroyer (Scott 262), a truly amazing mint single, o.g., never hinged, bright and precisely centered with generous, perfectly balanced margins, Superb, with a 2020 P.S.E. certificate *graded GEM 100*. SG £85 (\$110). Unitrade C\$120 (\$90). SMQ \$850. Estimate \$750 - 1,000

4342 P

1950, King George VI, 5¢ deep blue, die proof on India, die-sunk on card (Scott 293P1), fresh and clean, the proof with die number XG881 at top; India measures approximately 75mm square on 92 x 98mm card; tiny scuff at left of design; card with thin in bottom left and right corners, Very Fine, with 2023 P.S.E. certificate graded VF 80. SMQ **VF 80**. Estimate \$750 - 1,000



4343

4343 ★★

1951, \$1 Fisheries (Scott 302), a spectacular mint single, o.g., never hinged, bright, fresh and absolutely perfectly centered with ample, precisely balanced margins, Superb, with a 2011 P.F. certificate *graded S 98*. SMQ \$200. Estimate \$150 - 200

Kelleher offers **telephone bidding** during the auction for clients on a priority basis, so please call us to arrange for phone bidding as soon as possible.



QUEEN ELIZABETH II ISSUES

An Exceptional Mint Example of the Famed “Seaway Invert”



4344

4344 ★★

1959, 5¢ St. Lawrence Seaway, *center inverted* (Scott 387a), a pristine mint example, post office fresh and well centered with immaculate, never hinged o.g., Very Fine to Extremely Fine, with a 2018 Greene Foundation certificate. Scott \$9,000.
Estimate \$7,500 - 10,000

(photo on front cover)

About 400 examples are believed to have been issued, with about half of that number being used. Of the 200, or so, unused examples, as many as half have fingerprints or other gum defects, due to mishandling by the non-collecting public, the source of nearly all known examples.



4345

4345 ★★

1959, 5¢ St. Lawrence Seaway, red inscriptions doubled (Unitrade 387i), an exceptional example with the doubling especially noticeable in “CANADA”, o.g., never hinged, but with a light colorless fingerprint, fresh and well centered with right sheet margin selvage (penciled position “30” on the back). Extremely Fine, with a 2018 A.P.S. certificate. Scott 387 var. Unitrade C\$2,500 (\$1,860). Estimate \$750 - 1,000



4346

4346 ★★

1971, 8¢ Queen Elizabeth II & Library of Parliament coil, imperf (Scott 550a), pair, o.g., never hinged, fresh and sound with strong color on bright paper, Very Fine, with 2019 P.S.E. certificate. Unitrade C\$750 (\$560). Scott \$600. Estimate \$200 - 300



4347

4347 ★★

1973, 15¢ Royal Canadian Mounted Police, imperf (Scott 614a), vertical pair, o.g., never hinged, pristine and sound, without the common wrinkles or small faults often seen on this, Very Fine to Extremely Fine, with 2020 P.S.E. certificate graded VF-XF 85. SMQ **VF-XF 85**. Unitrade C\$600 (\$450). Scott \$500. Estimate \$200 - 300



4348

4348 ★★

1994, 43¢ Flag over Prairie, vertical booklet pair, imperforate between (Scott 1359f), o.g., never hinged, Post Office fresh with large, balanced margins, natural straight edge at bottom (#1359ds), Very Fine, with 2019 P.S.E. certificate. Unitrade C\$1,000 (\$740). Scott \$700. Estimate \$250 - 350



4349

4349 P田

Airmail, 1928, 5¢ brown olive, plate proof on India (Scott C1), a gorgeous **block of 4**, ungummed, large balanced margins, Extremely Fine, with a 2019 P.S.E. certificate *graded XF 90*. Estimate \$300 - 400

AIRMAIL



4350

4350 ★★田

Airmail, 1928, 5¢ brown olive (Scott C1), top Plate No. 2 block of 6, the upper right stamp being the “swollen breast” variety, o.g., never hinged, fresh and nicely centered, Very Fine, with a 2019 P.S.E. certificate. Unitrade C\$500 (\$370). Scott \$350. Estimate \$200 - 300



4351

4351 ★★

Airmail, 1928, 5¢ brown olive, imperf (Scott C1a), a fresh, large-margined right sheet margin vertical pair, o.g., never hinged, Very Fine to Extremely Fine, with a 2019 P.S.E. certificate *graded VF-XF 85*. Unitrade C\$525 (\$390). Scott \$368. Estimate \$250 - 350



4352

4352 ★★

Airmail, 1928, 5¢ brown olive, imperf (Scott C1a), a lovely right sheet margin horizontal pair, o.g., never hinged, fresh and bright with large margins, Very Fine to Extremely Fine, with a 2019 P.S.E. certificate *graded VF-XF 85*. Unitrade C\$525 (\$390). Scott \$368. Estimate \$250 - 350



4353

4353 ★★/★田

Airmail, 1928, 5¢ brown olive, imperf (Scott C1a), left sheet margin **block of 4** with split arrow at the lower left, o.g., very lightly hinged at the top only, large balanced margins, Extremely Fine to Superb, with a 2019 P.S.E. certificate *graded VF-XF 85*. Unitrade C\$875 (\$650). Scott \$613. Estimate \$500 - 750



4354

4354 ★★

Airmail, 1928, 5¢ brown olive, horizontal pair, imperf. vertically (Scott C1b), o.g., never hinged, fresh and nicely centered, Fine to Very Fine, with a 2019 P.S.E. certificate. Unitrade C\$525 (\$390). Scott \$368. Estimate \$200 - 300



4355

4355 ★★

Airmail, 1928, 5¢ brown olive, imperf. horizontally (Scott C1c), a pretty vertical *strip of 3*, o.g., never hinged, fresh and well centered, Very Fine, with a 2019 P.S.E. certificate. Unitrade C\$525+ (\$390). Scott \$368+. Estimate \$300 - 400



4356

4356 ★★

Airmail, 1928, 5¢ brown olive, vertical pair, imperf. horizontally (Scott C1c), o.g., never hinged, fresh and well centered, Very Fine, with a 2019 P.S.E. certificate *graded VF 80*. Unitrade C\$525 (\$390). Scott \$368. Estimate \$250 - 350



4357

4357 ★★/★

Airmail, 1932, 6¢ on 5¢ brown olive, surcharge inverted (Scott C3a), a striking bottom sheet margin vertical pair, o.g., bottom stamp never hinged, nicely centered, Very Fine, with a 2020 P.S.E. certificate. Unitrade C\$750 as singles (\$560). Scott \$525 as singles. Estimate \$350 - 500

Kelleher offers **telephone bidding** during the auction for clients on a priority basis, so please call us to arrange for phone bidding as soon as possible.



4358



4359

4358 ★★

Airmail, 1935, 6¢ red brown, imperf (Scott C5b), a choice vertical pair, o.g., never hinged, exceptionally fresh with ample, well balanced margins, Very Fine to Extremely Fine. *No more than 125 pairs possible*, with a 2020 P.S.E. certificate graded VF-XF 85. Unitrade C\$1,200 (\$890). Scott \$825. Estimate \$500 - 750

4359 ★★

Airmail, 1935, 6¢ red brown, imperf (Scott C5b), a marvelous right sheet margin horizontal pair, o.g., never hinged, bright and fresh with large balanced margins, Very Fine to Extremely Fine. *No more than 125 pairs possible*, with a 2018 P.S.E. certificate graded VF-XF 85. Unitrade C\$1,200 (\$890). Scott \$825. Estimate \$600 - 800



4360



4361



4362

4360 ★★

Airmail, 1938, 6¢ blue, imperf. pair (Scott C6a), o.g., never hinged, incredibly fresh with generous, beautifully balanced margins, Extremely Fine. *Only 75 pairs were available*, with a 2020 P.S.E. certificate graded XF 90. Unitrade C\$1,200 (\$890). Scott \$850. Estimate \$600 - 800

4361 ★★

Airmail, 1938, 6¢ blue, imperf (Scott C6a), an exceptional right sheet margin vertical pair, o.g., never hinged, Extremely Fine, with a 2019 P.S.E. certificate graded XF 90. Unitrade C\$1,200 (\$890). Scott \$850. Estimate \$500 - 750

4362 ★★

Airmail, 1942, 6¢ deep blue, imperf (Scott C7a), a magnificent vertical pair, o.g., never hinged, post office fresh with generous, beautifully balanced margins, Extremely Fine to Superb. *Only 50 pairs recorded*, with a 2020 P.S.E. certificate graded XF-SUP 95. Unitrade C\$1,200 (\$890). Scott \$850. Estimate \$500 - 750



4363

4363 ★★

Airmail, 1942, 6¢ War Effort, imperf. pair (Scott C7a), o.g., never hinged, fresh and bright with large balanced margins, Extremely Fine. *Only 75 pairs are recorded*, with a 2019 P.S.E. certificate graded XF 90. Unitrade C\$1,200 (\$890). Scott \$850. Estimate \$600 - 800



AIRMAIL SPECIAL DELIVERY



4364

4364 ★★

Airmail Special Delivery, 1942, 16¢ bright ultramarine (Scott CE1), "Top-of-the-Pop" Perfection, o.g., never hinged, Superb. *The highest possible SMQ grade; not priced in any grade higher than XF-Sup 95 (\$25), with a 2023 P.S.E. certificate graded GEM 100 J.* Scott \$4. Estimate \$250 - 350



4365

4365 ★★

Airmail Special Delivery, 1943, 17¢ bright ultramarine, imperf (Scott CE2a), an exceptional, wide-margined vertical horizontal, o.g., never hinged, fresh and bright, Extremely Fine. *Only 75 pairs recorded, with a 2021 P.S.E. certificate graded XF 90.* Unitrade C\$1,200 (\$890). Scott \$825. Estimate \$500 - 750



4366

4366 ★★

Airmail Special Delivery, 1943, 17¢ bright ultramarine, imperf (Scott CE2a), a lovely right sheet margin horizontal, o.g., never hinged, bright and fresh, Very Fine to Extremely Fine. *Only 75 pairs recorded, with a 2020 P.S.E. certificate graded VF-XF 85.* Unitrade C\$1,200 (\$890). Scott \$825. Estimate \$600 - 800

AIRMAIL SEMI-OFFICIAL



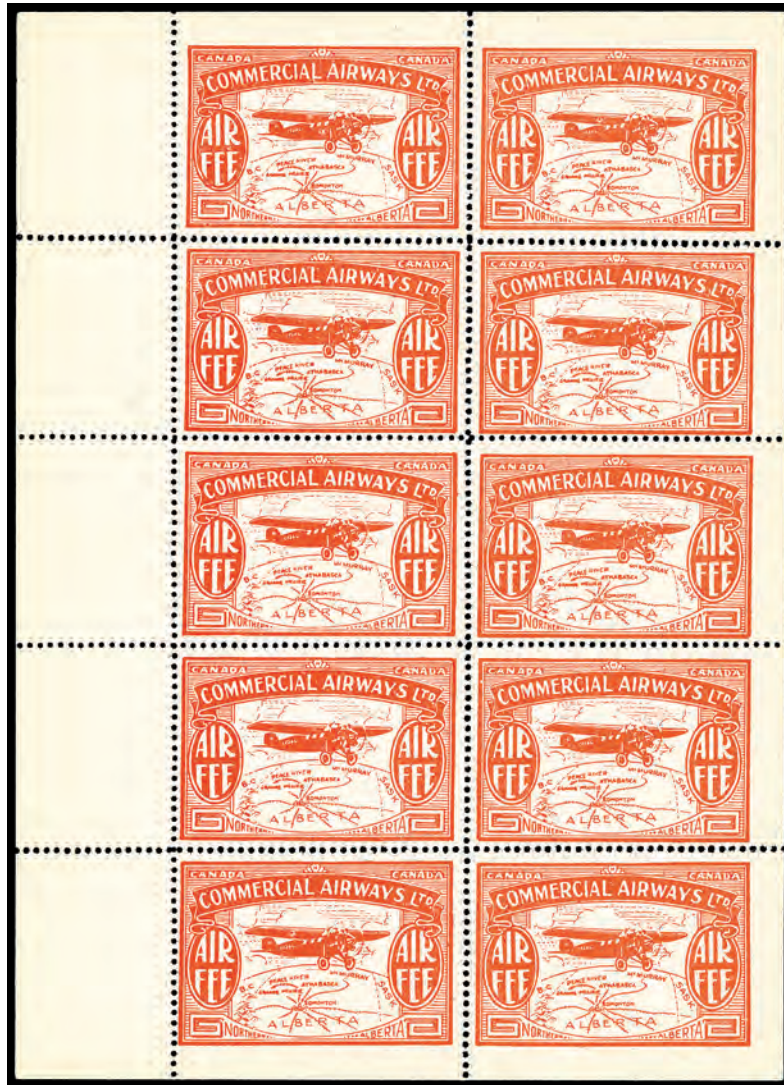
4367

4367 ★★

Commercial Airways Ltd. 1930 (10¢) orange, imperf (Scott CL50), a pretty left sheet margin horizontal pair, o.g., never hinged, bright, fresh and large-margined, Extremely Fine to Superb, with a 2018 P.S.E. certificate graded XF-SUP 95. Unitrade C\$375 (\$280). Scott \$225. Estimate \$300 - 400



WILLIAM KINNEY "EVEREST" CANADA



4368

4368 ★★田

Commercial Airways Ltd. 1930 (10¢) orange (Scott CL50), full pane of 10, o.g., never hinged, post office fresh and sound with pristine color, Fine to Very Fine, top & bottom rows Very Fine, with 2022 P.S.E. certificate. Unitrade C\$250 as singles (\$190). Scott \$150. Estimate \$200 - 300



4369

4369 ★★田

Commercial Airways Ltd. 1930 (10¢) orange, imperf (Scott CL50), a choice left sheet margin **block of 4**, o.g., never hinged, wonderfully fresh with generous margins, Extremely Fine to Superb, with a 2019 P.S.E. certificate *graded XF-SUP 95*. Unitrade C\$750 (\$560). Scott \$450. Estimate \$500 - 750



SPECIAL DELIVERY



4370



4371



4372

- 4370 ★★** Special Delivery, 1898, 10¢ blue green (Scott E1), an outstanding mint single, o.g., never hinged, exceptionally fresh with gorgeous color and an oversize top margin, Very Fine, with a 2019 P.S.E. certificate *graded VF 80 J. SMQ VF 80J*; \$700. Scott \$725. Estimate \$500 - 750
- 4371 ★★田** Special Delivery, 1898, 10¢ blue green (Scott E1), a fresh mint **block of 4**, o.g., never hinged, rich color, Fine and scarce, with a 2019 P.S.E. certificate. Scott \$1,500 as singles. Estimate \$300 - 400
- 4372 ★★田** Special Delivery, 1927, Confederation, 20¢ orange, imperf. pair (Scott E3a), o.g., never hinged, Very Fine to Extremely Fine. *250 pairs known*, with a 2021 P.S.E. certificate *graded VF-XF 85*. Unitrade C\$1,000 as pairs (\$740). Scott \$850 as pairs. Estimate \$500 - 750



4373



4374



4375

- 4373 ★★** Special Delivery, 1927, Confederation, 20¢ orange, horizontal pair, imperf. vertically (Scott E3b), an extraordinary right sheet margin pair, o.g., never hinged, bright, fresh and virtually perfectly centered, Extremely Fine. *Only 250 pairs recorded*, with a 2019 P.S.E. certificate *graded XF 90*. 500. Scott \$425. Estimate \$400 - 600
- 4374 ★★** Special Delivery, 1927, Confederation, 20¢ orange, horizontal pair, imperf. vertically (Scott E3b), o.g., never hinged, fresh and bright, Very Fine to Extremely Fine. *Only 250 pairs recorded*, with a 2018 P.S.E. certificate *graded VF-XF 85*. 500. Scott \$425. Estimate \$300 - 400
- 4375 ★★田** Special Delivery, 1927, Confederation, 20¢ orange, imperf. vertically (Scott E3b), a striking bottom sheet margin **block of 4**, o.g., never hinged, wonderfully bright, fresh and well centered, Very Fine to Extremely Fine. *250 pairs known*, with a 2021 P.S.E. certificate *graded VF-XF 85*. Unitrade C\$1,000 as pairs (\$740). Scott \$850 as pairs. Estimate \$500 - 750



WILLIAM KINNEY "EVEREST" CANADA



4376



4377



4378

4376 ★★

Special Delivery, 1927, Confederation, 20¢ orange, vertical pair, imperf. horizontally (Scott E3c), o.g., never hinged, fresh, bright and beautifully centered, Extremely Fine to Superb. *250 pairs known*, with a 2018 P.S.E. certificate *graded XF-SUP 95*. Unitrade C\$500 (\$370). Scott \$425. Estimate \$350 - 500

4377 ★★田

Special Delivery, 1927, Confederation, 20¢ orange, imperf. horizontally (Scott E3c), an extraordinary **block of 4**, o.g., never hinged, incredibly fresh and precisely centered, Extremely Fine to Superb. *250 pairs known*, with a 2021 P.S.E. certificate *graded XF-SUP 95*. Unitrade C\$1,000. Only 75 pairs recorded. (\$740). Scott \$850 as pairs. Estimate \$750 - 1,000

4378 ★★

Special Delivery, 1933, 20¢ henna brown, imperf (Scott E5a), a marvelous top sheet margin vertical pair, o.g., never hinged, large balanced margins, Very Fine. *Only 75 pairs known*, with a 2016 Greene Foundation certificate. Unitrade C\$1,600 (\$1,190). Scott \$1,100. Estimate \$400 - 600



4379

4379 ★★田

Special Delivery, 1935, 20¢ dark carmine (Scott E6), top right full pane of 50, plate number 1, dot after "T" of "NOTE", o.g., never hinged, post office fresh with sharp detail and lovely centering; position 1 with a horizontal gum crease, Very Fine, with 2018 P.S.E. certificate. Unitrade C\$1,495 as plate & singles (\$1,110). Estimate \$400 - 600



4380

4380 ★★

Special Delivery, 1935, 20¢ dark carmine, imperf (Scott E6a), a pretty horizontal pair, o.g., never hinged, fresh and bright with ample to large margins, Very Fine to Extremely Fine. *Only 75 pairs are known*, with 2019 P.S.E. certificate graded VF-XF 85. SG. Untrade C\$1,400 (\$1,040). Scott \$1,000. Estimate \$750 - 1,000



4381

4381 ★★

Special Delivery, 1939, 10¢ dark green, imperf (Scott E7a), a lovely horizontal pair, o.g., never hinged, fresh and choice, Very Fine to Extremely Fine. *Only 75 pairs are known*, with a 2020 P.S.E. certificate graded VF-XF 85. Untrade C\$1,400 (\$1,040). Scott \$1,100. Estimate \$750 - 1,000



4382

4382 P



4383

4383 ★★

Special Delivery, 1938, 20¢ dark carmine, imperf (Scott E8a), a superlative horizontal pair, o.g., never hinged, exceptionally bright with generous, well balanced margins, Extremely Fine to Superb. *Only 75 pairs are known*, with a 2019 P.S.E. certificate graded XF-SUP 95. Untrade C\$1,400 (\$1,040). Scott \$1,100. Estimate \$750 - 1,000



4384

4384 ★★

Special Delivery, 1942, War Effort, 10¢ green, imperf (Scott E10a), a choice vertical pair, o.g., never hinged, bright, fresh and generously-margined, Extremely Fine. *Only 75 pairs are known*, with a 2020 P.S.E. certificate graded XF 90. Untrade C\$1,200 (\$890). Scott \$825. Estimate \$600 - 800



4385

4385 ★★田

Special Delivery, 1942, War Effort, 10¢ green, imperf (Scott E10a), a lovely right sheet margin block of 4, o.g., never hinged, exceptionally fresh and bright with ample to large margins, Extremely Fine. *A scarce multiple as only 75 pairs are known*, with a 2021 P.S.E. certificate graded XF 90. Untrade C\$2,400 (\$1,780). Scott \$1,650 as pairs. Estimate \$1,200 - 1,800

Kelleher offers **telephone bidding** during the auction for clients on a priority basis, so please call us to arrange for phone bidding as soon as possible.



REGISTRY



4386

4386 ★★/★

Registry, 1875, 5¢ dark green, imperf (Scott F2c), an extraordinary, full top sheet margin vertical pair, o.g., hinge remnant in the selvage, the stamps never hinged, bright and fresh with a small part of the sheet margin imprint showing at the right, Extremely Fine to Superb. *Only 200 pairs are recorded*, with a 2021 P.S.E. certificate graded *XF-SUP 95*. Unitrade C\$3,000 (\$2,230). Scott \$2,200. Estimate \$1,500 - 2,000

(photo on back cover)

POSTAGE DUE



4387

4387 (★)

Postage Due, 1906, 1¢ violet, imperf (Scott J1b), a choice right sheet margin horizontal pair, without gum as issued, wonderfully fresh with generous margins, Extremely Fine to Superb. *Only 100 pairs are possible*, with a 2019 P.S.E. certificate graded *XF-SUP 95*. Unitrade C\$500 (\$370). Scott \$350. Estimate \$300 - 400



4388

4388 (★)

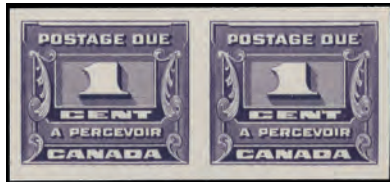
Postage Due, 1906, 2¢ violet, imperf (Scott J2b), a lovely right sheet margin horizontal pair, without gum as issued, Extremely Fine to Superb. *Only 100 pairs are possible*, with a 2019 P.S.E. certificate graded *XF-SUP 95*. Unitrade C\$500 (\$370). Scott \$350. Estimate \$300 - 400



4389

4389 (★)

Postage Due, 1906, 5¢ violet, imperf. pair (Scott J4b), without gum as issued, bottom right corner pair, Post Office fresh and sound, Extremely Fine. *Only 100 pairs issued*, with 2019 P.S.E. certificate graded *XF 90*. SMQ **XF 90**. Unitrade C\$500 (\$370). Scott \$350. Estimate \$250 - 350



4390



4391



4392



4393

4390 ★★

Postage Due, 1934, 1¢ dark violet, imperf (Scott J11a), an exceptional, large-margined horizontal pair, o.g., never hinged, bright and fresh, Extremely Fine to Superb. *Only 100 pairs are possible*, with a 2019 P.S.E. certificate graded *XF-SUP 95*. Untrade C\$1,000 (\$740). Scott \$700. Estimate \$600 - 800

4391 ★★

Postage Due, 1934, 1¢ dark violet, imperf. pair (Scott J11a), o.g., never hinged, pristine with rich color on bright white paper, Fine to Very Fine. *Only 100 pairs issued*, with 2019 P.S.E. certificate. Untrade C\$1,000 (\$740). Scott \$600. Estimate \$300 - 400

4392 ★★田

Postage Due, 1935, 1¢ dark violet, imperf (Scott J15a), a gorgeous **block of 4**, o.g., never hinged, Extremely Fine. *Only 100 pairs are possible*, with a 2020 P.S.E. certificate graded *XF 90*. Untrade C\$900 as pairs (\$670). Scott \$630 as pair. Estimate \$400 - 600

4393 ★★

Postage Due, 1935, 1¢ dark violet, imperforate pair (Scott J15a), o.g., never hinged, pristinely printed horizontal pair with full, balanced margins all around; small crease between the stamps, Very Fine. *Only 100 pairs issued*, with 2021 P.S.E. certificate graded VF 80. SMQ **VF 80**. Untrade C\$450 (\$330). Scott \$315. Estimate \$200 - 300



4394



4395



4396



4397



4398

4394 ★★

Postage Due, 1935, 2¢ dark violet, imperf (Scott J16a), an extraordinary horizontal pair, o.g., never hinged, wonderfully fresh with large, beautifully balanced margins, Extremely Fine to Superb. *Only 100 pairs are possible*, with a 2019 P.S.E. certificate graded *XF-SUP 95*. Untrade C\$450 (\$330). Scott \$315. Estimate \$250 - 350

4395 ★★

Postage Due, 1935, 2¢ dark violet, imperf (Scott J16a), a choice right sheet margin vertical pair, o.g., never hinged, post office fresh with generous margins, Extremely Fine to Superb. *Only 100 pairs are possible*, with a 2018 P.S.E. certificate graded *XF-SUP 95*. Untrade C\$450 (\$330). Scott \$315. Estimate \$200 - 300

4396 ★★田

Postage Due, 1935, 2¢ dark violet, imperf (Scott J16a), a fabulous **block of 4**, o.g., never hinged, fresh and bright with generous, beautifully balanced margins, Extremely Fine to Superb. *Only 100 pairs are possible*, with a 2020 P.S.E. certificate graded *XF-SUP 95*. Untrade C\$900 (\$670). Scott \$630. Estimate \$400 - 600

4397 ★★田

Postage Due, 1935, 4¢ dark violet, imperf (Scott J17a), a marvelous **block of 4**, o.g., never hinged, fresh and choice with large, beautifully balanced margins, Extremely Fine. *Only 100 pairs are possible*, with a 2020 P.S.E. certificate graded *XF 90*. Untrade C\$900 (\$670). Scott \$630. Estimate \$400 - 600

4398 ★★田

Postage Due, 1935, 10¢ dark violet, imperf (Scott J20a), a marvelous **block of 4**, o.g., never hinged, post office fresh with large to oversized margins, Extremely Fine. *Only 100 pairs are possible*, with a 2020 P.S.E. certificate graded *XF 90*. Untrade C\$900 (\$670). Scott \$630. Estimate \$400 - 600



WAR TAX



4399



4400



4401



4402

4399 ★★

War Tax, 1915, King George V “Admiral”, 1¢ green (Scott MR1), a truly phenomenal mint *Jumbo*, o.g., never hinged, incredibly fresh and absolutely perfectly centered with huge, “boardwalk” margins all around, Superb, with a 2019 P.S.E. certificate *graded GEM 100 J*. Unitrade C\$120 (\$90). SMQ \$750. Scott \$83. Estimate \$500 - 750

4400 ★★

War Tax, 1915, King George V “Admiral”, 1¢ green (Scott MR1), an extraordinary mint example, o.g., never hinged, bright, fresh and precisely centered with large, symmetrical margins, Superb, with a 2023 P.F. certificate *graded S 98*. Unitrade C\$120 (\$90). SMQ \$350. Scott \$83. Estimate \$300 - 400

4401 ★★/★田

War Tax, 1915, King George V “Admiral”, 1¢ green (Scott MR1), a lovely mint **block of 4**, o.g., bottom stamps never hinged, exceptionally fresh and well centered, Very Fine to Extremely Fine, with a 2018 P.S.E. certificate *graded VF-XF 85*. SMQ **VF-XF 85**; \$360 as singles. Unitrade C\$325 (\$240). Scott \$220 as singles. Estimate \$300 - 400

4402 ★★田

War Tax, 1915, King George V “Admiral”, 1¢ green (Scott MR1), a choice bottom sheet margin **block of 6 with type B lathework**, o.g., never hinged, fresh and quite well centered, Very Fine, with 2021 P.S.E. certificate. Unitrade C\$900 as singles (\$670). Scott \$495 as plain singles. Estimate \$350 - 500



4403

4403 ★★田

War Tax, 1915, King George V “Admiral”, 1¢ green (Scott MR1), a fresh, well centered **Plate No. 17 block of 10** from the upper left corner of the upper right pane with split arrow at the left, o.g., never hinged, but the two left stamps with slightly glazed gum; horizontal crease across bottom stamps (visible only on the back), otherwise Very Fine. Scott \$405 as singles. Estimate \$250 - 350



4404

- 4404 ★★/★田** War Tax, 1915, King George V “Admiral”, 2¢ carmine (Scott MR2), left full pane of 100, plate number A9, post office fresh with bold color and clean detail; positions 91 & 100 hinged, others never hinged; minor perforation separations, Fine to Very Fine, with 2018 P.S.E. certificate. Untrade approximately C\$7,370 as singles (\$5,480). Estimate \$2,500 - 3,500



4405



4406



4407



4408



4409

- 4405 ★★** War Tax, 1915, 20¢ “Admiral”, overprinted “WAR TAX” (Unitrade MR2C), a gorgeous mint single, o.g., never hinged, exceptionally fresh and beautifully centered with extra large top & bottom margins, Extremely Fine, with a 2018 P.S.E. certificate *graded XF 90*. Scott MR2 var. Untrade C\$720 (\$540). Estimate \$750 - 1,000
- 4406 ★★** War Tax, 1916, King George V “Admiral”, 2¢+1¢ brown, type II (Scott MR4), a choice mint single, o.g., never hinged, fresh and virtually perfectly centered with unusually large margins, Extremely Fine to Superb, with a 2018 P.S.E. certificate *graded XF-SUP 95*. Untrade C\$120 (\$90). SMQ \$195. Scott \$83. Estimate \$150 - 200
- 4407 ★★田** War Tax, 1916, King George V “Admiral”, 2¢+1¢ brown, type II (Scott MR4), a fresh, exceptionally well centered block of 4, o.g., never hinged, Very Fine to Extremely Fine, with a 2020 P.S.E. certificate *graded VF-XF 85*. SMQ **VF-XF 85**; \$360 as singles. Untrade C\$480 (\$360). Scott \$330 as singles. Estimate \$300 - 400
- 4408 (★)田** War Tax, 1916, King George V “Admiral”, 2¢+1¢ brown, type II, *imperforate vertically* (Unitrade MR4iii), a pretty unused block of 4, without gum as issued, fresh and reasonably well centered, Fine to Very Fine, with a 2019 P.S.E. certificate. Scott MR4a var. Untrade C\$1,500 for two pairs (\$1,110). Estimate \$600 - 800
- 4409 ★** War Tax, 1916, King George V “Admiral”, 2¢+1¢ carmine, type I, perf. 12 x 8 (Scott MR5), a phenomenal mint single, full o.g., wonderfully fresh with huge, perfectly balanced margins and extraordinary color, Superb. *Perfection* with a 2018 P.S.E. certificate *graded GEM 100 J*. Untrade C\$80 (\$60). SMQ \$495. Scott \$55. Estimate \$400 - 600



OFFICIAL



4410

4410 ★★

Official, 1949, 50¢ Lumbering, "O.H.M.S." overprint (Scott O9), a phenomenal mint single, o.g., never hinged, post office fresh and absolutely perfectly centered with fabulous color and contrast, Superb, with a 2018 P.S.E. certificate graded *GEM 100*. SMQ **Gem 100**; \$2,350. Scott \$190. Estimate \$2,000 - 3,000



4411

4411 ★★田

Official, 1950, 10¢ Fur Resources, "G" overprint omitted (Scott O26a), position 3 in a choice vertical block of 10, o.g., never hinged, fresh and beautifully centered; position 4 with some trivial light bends ("light creases" according to the accompanying certificate), Extremely Fine, with a 2019 P.S.E. certificate. Unitrade C\$1,275 (\$950). Scott \$1,250. Estimate \$500 - 750



4414

4414 田

Postal Note & Scrip Stamps, 1932-48 First Issue, 4¢ blue, vertical pair imperforate horizontally (Van Dam FPS6a), right margin block of 4, o.g., never hinged, post office fresh with crisp color and detail on glowing white paper, sound, Very Fine, with 2019 P.S.E. certificate. Van Dam C\$1,200 as two pairs (\$890). Estimate \$400 - 600



4415

4415 (★)

Excise Tax, 1934-48, 6¢ blue Three Leaf design, imperforate pair (Van Dam FX100a), without gum as issued, pristine with bold color, bright paper, and full, balanced margins all around, Extremely Fine, with 2020 P.S.E. certificate graded XF 90. SMQ **XF 90**. Van Dam C\$700 (\$520). Estimate \$350 - 500

REVENUE

4412 ★★田

1868, Third Bill Issue, 1¢/9¢ (Van Dam FB37//FB46), complete sheets of 100 (3¢ broken), comprising 1¢ (#FB37), 3¢ (#FB40), 6¢ (#FB43) and 9¢ (#FB46), o.g., never hinged, all fresh with crisp detail and solid colors, with four "British American Bank Note Co. Montreal & Ottawa" imprints in selvage (two top, two bottom), tops additionally with value imprint; small faults as to be expected, still Very Fine overall, a pretty group. Van Dam C\$1,100 as singles (\$820). (photo on web site) Estimate \$300 - 400

4413 ★★田

1900, \$5 Electric Light Effigy Electric Light Inspection (Van Dam FE16b), complete sheet of 50, plate number 1, wonderfully fresh with intense color and dark blue/black control numbers 208901-208950 (above the range given in Van Dam), o.g., never hinged, Very Fine. Van Dam C\$500 as singles (\$370). (photo on web site) Estimate \$200 - 300

Bid Sheet - Sale 829

December 11, 2025

NOTE: Limits of less than \$200 are respectfully declined.

