

The
WILLIAM S. LANGS
STOCK & PRIVATE HOLDINGS
of
United States & Possessions Stamps

PART 1



Daniel F. Kelleher Auctions
LLC

October 28-30, 2020

DANBURY, CT
SALE 745

Highlights of the Sale



- 117 ○ 1855, 10¢ green, type III (15. SMQ XF-SUP 95J), a stunning stamp with massive margins framing deep, sharply printed color; light grid cancel simply adds to the allure, Extremely Fine to Superb, a gem destined for a collection of distinction; with 2017 P.S.A.G. certificate graded 95J, Scott \$140. SMQ \$875.
Hammer Price \$550



- 159 ★★ 1857, 1¢ blue, type V (24. SMQ VF-XF 85), o.g., never hinged, Post Office fresh with bold color and clean detail, centered to show all ornaments, Very Fine to Extremely Fine, a select example; with 2020 Crowe certificate graded 85, Scott \$140. SMQ \$675.
Hammer Price \$500



- 446 ○ 1869, 6¢ ultramarine (115. SMQ XF 90J), pristine with bright color and huge margins; grand red cancel heightens the appeal, Extremely Fine; with 2017 P.S.A.G. certificate graded 90J, Scott \$200. SMQ \$1,050.
Hammer Price \$650



- 496 ○ 1869, 30¢ ultramarine & carmine, flags inverted (121b), neat quartered cork cancel, exceptionally strong colors for this issue, with intense carmine and ultramarine on contrasting bright white paper; short corner perforation at upper left, completely sound in every other respect, Very Fine to Extremely Fine and rare, *with only about 40 known examples, three of which are sound, this places nicely as one of the top examples from this historic rarity—by far the rarest of the 1869 inverts, ex-Lafayette*; with “fault-free” 1991 P.F. certificate, Scott \$90,000.

Hammer Price \$47,500

This was last offered as lot #1340 by Matthew Bennett on May 2, 2003, where it realized \$37,500 vs. a catalog value of \$70,000. It previously realized \$22,000 vs. a \$23,500 catalog value in the 1976 Siegel Rarities of the World Sale and is listed in the Siegel census as #121b-CAN-36.



- 518 ○ 1869 (1875 Re-issue), 30¢ ultramarine & carmine (131. SMQ XF-SUP 95), a simply breathtaking stamp, with the most glorious colors possible, perfectly registered and mathematically centered, the multiple cancels still failing to mask the design, Extremely Fine to Superb, a dazzling stamp that would be *the* highlight of any collection, *only 1,535 sold*; with 1986 P.F. and 2020 Crowe certificates, the latter graded 95, Scott \$2,750. SMQ \$12,500.

Hammer Price \$6,250

Highlights of the Sale



- 589 (★) 1875 Special Printing, 90¢ violet carmine (177), without gum as issued, fresh and bright with incredibly deep color; scissors-separated as usual, light toning on reverse, otherwise F.-V.F., *only 46 known*; with 2004 P.S.E. certificate, Scott \$18,000.

Hammer Price \$5,250



- 654 ○ 1890, 10¢ green (226. SMQ SUP 98J), a sensational gem with proof-like color and detail, mathematically centered, with a light target cancel, a Superb jumbo, a winner on all fronts; with 2018 P.S.E. certificate graded Superb 98J, Scott \$5. SMQ \$875.

Hammer Price \$500



- 681 ★ 1893, Columbian, 15¢ dark green (238. SMQ SUP 98), o.g., barest trace of hinge (appears never hinged), the absolute picture of perfection, Superb, destined for a collection of distinction, *only one stamp is graded higher, a 98J in the PSE's Population Report*; with 2019 P.S.E. certificate graded Superb 98, Scott \$200. SMQ \$1,600. **Hammer Price \$1,000**



- 687 ★ 1893, Columbian, 50¢ slate blue (240. SMQ XF-SUP 95J), bottom margin single with part imprint, o.g., previously hinged, a gorgeous positional piece, flawlessly printed and centered, the selvage a full wide bottom, Extremely Fine to Superb, Freddie Mercury was right; with 2010 P.S.E. certificate graded XF-Sup 95J, Scott \$425. SMQ \$2,400.

Hammer Price \$1,700



- 703 ○ 1893, Columbian, \$3 yellow green (243. SMQ XF-SUP 95), a glorious stamp with perfect printing and centering, its New York Registry cancel lightly struck, Extremely Fine to Superb, a top-notch dollar-value Columbian, *only ten stamps at this grade, with just two higher, according to PSE's Population Report*; with 2017 P.S.E. certificate graded XF-Sup 95, Scott \$750. SMQ \$4,850.

Hammer Price \$2,500

Highlights of the Sale



- 846 ★★ 1903, 3¢ bright violet (302. SMQ XF-SUP 95), o.g., never hinged, a magnificent deep-colored example, with proof-like detail and mathematically centered on fresh paper, Extremely Fine to Superb, a top-of-the-line stamp; with 1990 P.F. and 2016 P.S.E. certificates, the latter graded XF-Sup 95, Scott \$140. SMQ \$825. **Hammer Price \$650**



- 884 ★★ 1904, 5¢ Louisiana Purchase (326), o.g., never hinged, in monumental color and fresh detail, with near-perfect centering on immaculate paper, Extremely Fine, a grand addition to any album page; with two P.F. certificates: 1983 for block of four (this position 4), 1998 for single, Scott \$180. **Hammer Price \$950**



- 848 ★★ 1903, 5¢ blue (304), left margin single, o.g., never hinged, exceptionally fresh with proof-like presentation, centered amid magnificently balanced oversized margins, Extremely Fine to Superb, a real beauty; with 2016 P.F. certificate, Scott \$150. **Hammer Price \$550**



- 896 ★ 1907, 5¢ Jamestown (330), top margin imprint single, o.g., barest trace of hinge (appears never hinged), a magnificent stamp in deep, luxuriant color, cleanly printed on fresh paper, with margins well superior to the norm for this notorious issue, Very Fine to Extremely Fine, Scott \$140. **Hammer Price \$500**



- 880 ★★ 1904, 3¢ Louisiana Purchase (325. SMQ XF-SUP 95), o.g., never hinged, in doctrinal color, flawlessly printed and perfectly centered, Extremely Fine to Superb, a top-line example; with 2007 P.S.E. certificate graded XF-Sup 95, Scott \$170. SMQ \$1,200. **Hammer Price \$900**



- 923 ★★ 1909, 1¢ green, horizontal coil (352), o.g., never hinged, true Post Office fresh condition—and perfectly centered, Extremely Fine to Superb; with 2012 P.F. certificate, Scott \$230. **Hammer Price \$1,100**

Highlights of the Sale



- 927 ★ 1909, 2¢ carmine, horizontal coil (353), line pair (2mm spacing), o.g., hinged, in fiery color flawlessly printed, centered as close to perfect as they come, Extremely Fine to Superb, surely a Top of the Pop were it graded, ex Rupp; with 1988 and 2002 P.F. certificates, Scott \$750. **Hammer Price \$2,600**



- 967 ★★ 1913, 5¢ blue, horizontal coil (396. SMQ XF-SUP 95J), o.g., never hinged, in bodacious blue bounded by Brobdingnagian borders, Extremely Fine to Superb; with 1999 P.F. and 2007 P.S.E. certificates, the latter graded XF-Sup 95J, Scott \$135. SMQ \$800. **Hammer Price \$550**



- 960 ★ 1911, 15¢ pale ultramarine (382. SMQ SUP 98), o.g., barest trace of hinge (appears never hinged), exquisite and fresh, with perfect color, paper and centering, Superb, a magnificent stamp, *one of only three stamps at this grade, with one—a 98J—higher in PSE's Population Report*; with 2011 P.S.E. certificate graded Superb 98, Scott \$225. SMQ \$1,050. **Hammer Price \$950**



- 972 ★★ 1913, 5¢ Panama-Pacific, perf 12 (399. SMQ XF-SUP 95), right margin plate number 6129 single, o.g., never hinged, Post Office fresh with alluring color and picture-perfect detail, flawlessly centered, Extremely Fine to Superb, a lovely stamp; with 2018 P.S.E. certificate graded XF-Sup 95, Scott \$150. SMQ \$650. **Hammer Price \$600**



- 965 ★★ 1911, 3¢ deep violet, horizontal coil (394. SMQ XF 90J), o.g., never hinged, a piece of purple perfection, an Extremely Fine jumbo; with 2007 P.S.E. certificate graded XF 90J, Scott \$135. SMQ \$400. **Hammer Price \$1,000**



- 994 ★★ 1912, 10¢ orange yellow, S.L. watermark, perf 12 (416. SMQ XF-SUP 95J), o.g., never hinged, a perfect peach of this pumpkin-hued stamp, with great depth of color, clean lines and immense jumbo margins, V.G.; with 2019 P.S.A.G. and P.S.E. certificates, each graded 95J, Scott \$90. SMQ \$825. **Hammer Price \$600**

Highlights of the Sale



- 1005 ★★ 1914, 5¢ blue, S.L. watermark, perf 10 (428. SMQ XF-SUP 95J), o.g., never hinged, Post Office fresh JUMBO and perfect in every way, Extremely Fine to Superb, a magnificent stamp; with 2008 P.S.E. certificate graded XF-Sup 95J, Scott \$75. SMQ \$875.

Hammer Price \$600



- 1142 ★★ 1923, \$5 carmine & blue (573. SMQ XF-SUP 95J), o.g., never hinged, a magnificent, flawless jumbo of this popular issue, with intense colors and razor-sharp detail, Extremely Fine to Superb, just a gorgeous stamp; with 2007 P.S.E. certificate graded XF-Sup 95J, Scott \$180. SMQ \$650.

Hammer Price \$700



- 1092 ★★ 1919, 13¢ apple green, unwatermarked, perf 11 (513. SMQ SUP 98J), bottom left corner margin single with initials, o.g., never hinged, perfect, a Superb jumbo, simply perfect, *only one stamp grades higher (at 100) in PSE's Population Report*; with 2008 P.S.E. certificate graded Superb 98J, Scott \$21. SMQ \$800.

Hammer Price \$650



- 1138 ★★ 1923, 30¢ olive brown (569. SMQ SUP 98J), o.g., never hinged, a powerful stamp, the epitome of perfection, a Superb jumbo, if you collect only the best, this one's for you; with 2001 P.F. and 2009 P.S.E. certificates, the latter graded Superb 98J, Scott \$50. SMQ \$1,250.

Hammer Price \$1,200



- 1229 ★★田 1976, 13¢ Spirit of '76, imperf (1631b), horizontal full pane of 50, o.g., never hinged, Post Office fresh, the pane yielding 15 strips of three plus two #1629a plus an imperforate single, Very Fine, *only 45 strips issued*; with 2006 P.F. certificate, Scott \$10,500+.

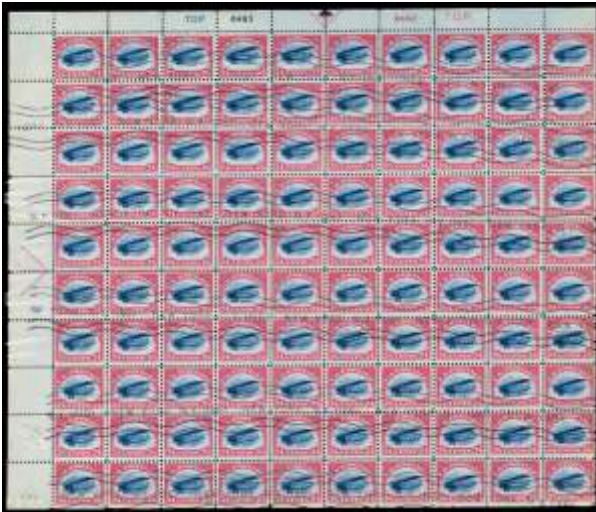
Hammer Price \$5,750



- 1247 ★★ 1982, 10.9¢ Hansom Cab coil, untagged (precancelled), imperf (1904b. Datz 1904b), plate number 1, pair, o.g., never hinged, Post Office fresh, the strip also showing a gap between lines at positions 3-4, Very Fine, gap in bars unpriced in Datz, *only 250 pairs reported*, Scott \$250 as plain pairs. Datz \$1,100+.

Hammer Price \$850

Highlights of the Sale



1331 ○田 **Airmail, 1918, 24¢ carmine rose & blue (C3)**, full top left pane of 100 with plate numbers **8493 - 8492**, a stunning pane, Post Office fresh in all regards with light “New York, N.Y. (186)” roller cancels, Very Fine, we’d love to know what cost \$24 to mail; an exhibition-worthy item, Scott \$3,000 as singles.

Hammer Price \$5,000



1353 ★★田 **Airmail, 1930, Graf Zeppelin complete (C13-C15)**, matched bottom margin plate blocks of 6, #C13 plate 20079, #C14 20088, #C15 20090, o.g., never hinged, normal skips and bends, fresh with strong colors; #C15 with tiny inclusion, Very Fine to Extremely Fine, a lovely set of plates, Scott \$16,950.

Hammer Price \$9,000



1432 ★★ **Special Delivery, 1911, 10¢ violet blue (E8b. SMQ XF-SUP 95)**, o.g., never hinged, the pinnacle of perfection, with compelling color, incredible impression, and magnificent margins, Extremely Fine to Superb, a *SOLO Top of the Pop*—the only stamp at this grade in PSE’s Population Report; with 2012 P.S.E. certificate graded XF-Sup 95, Scott \$350. SMQ \$1,650. **Hammer Price \$1,300**



1440 ★★ **Special Delivery, 1917, 10¢ ultramarine, “pink back” variety (E11 var. SMQ XF-SUP 95)**, o.g., never hinged, a sensational stamp, with sumptuous color and perfectly centered; the back—thanks to the aniline dye used to print the stamps—practically glows a warm pink, Extremely Fine to Superb, a great variety—and a real stunner; with 2010 P.S.E. certificate graded XF-Sup 95, Scott \$225. SMQ \$1,500. **Hammer Price \$900**

Highlights of the Sale



- 1451 ★★ Postage Due, 1891, 3¢ bright claret (J24. SMQ XF-SUP 95), o.g., never hinged, a simply gorgeous stamp in dazzling color, exquisitely centered on immaculate paper, Extremely Fine to Superb, a Due to pay for; with 2009 P.S.E. certificate graded XF-Sup 95, Scott \$180. SMQ \$750. **Hammer Price \$550**



- 1495 ★★ Offices in China, 1919, 12¢ on 6¢ red orange (K6), o.g., never hinged, a stunner with crisp overprint, all perfectly centered amid big margins, Superb, Scott \$210. **Hammer Price \$1,100**



- 1612 ★★ Parcel Post, 1913, 10¢ carmine rose (Q6), o.g., never hinged, stunning stamp with rich color and massive, well-balanced margins, Extremely Fine, one for the graders, Scott \$90. **Hammer Price \$600**



- 1617 ★★田 Parcel Post, 1913, 20¢ carmine rose (Q8), right margin plate number 6192 block of 6, o.g., never hinged, a pretty block in clean color, F.-V.F.; with 2009 P.F. certificate, Scott \$9,000. **Hammer Price \$5,000**

Daniel F. Kelleher Auctions, LLC

America's Oldest Philatelic Auction House, est. 1885

PO Box 220

Bethel, CT 06801-0220 USA

Tel: 203-297-6056

Fax: 203-297-6059

E-mail: info@kelleherauctions.com

www.kelleherauctions.com



Prices Realized

Auction No.: **745**
Auction Date: October 28-30, 2020
The William S. Langs Stock, Part
1:U.S. and Possessions Stamps
Total Realized: \$1,550,735

Prices shown are the prices the lots sold for. Any lots not listed were withdrawn, skipped or combined.
Prices do not include the 20 % buyer's premium.

Lot No.	Realized	Lot No.	Realized	Lot No.	Realized	Lot No.	Realized
1	\$1,200	49	\$5,250	95	\$750	141	\$1,700
2	\$325	50	\$2,500	96	\$325	142	\$1,000
3	\$400	51	\$700	97	\$450	143	\$950
4	\$250	52	\$400	98	\$375	144	\$1,500
5	\$250	53	\$1,200	99	\$900	145	\$1,300
6	\$300	54	\$500	100	\$275	146	\$700
7	\$350	55	\$550	101	\$3,250	147	\$1,300
8	\$225	56	\$325	102	\$3,250	148	\$750
9	\$400	57	\$300	103	\$1,800	149	\$425
10	\$450	58	\$475	104	\$1,500	150	\$375
11	\$300	59	\$300	105	\$1,500	151	\$1,200
12	\$450	60	\$450	106	\$650	152	\$1,200
13	\$425	61	\$900	107	\$800	153	\$1,500
14	\$1,000	62	\$550	108	\$550	154	\$1,300
15	\$1,100	63	\$650	109	\$450	155	\$1,200
16	\$350	64	\$750	110	\$275	156	\$400
17	\$200	65	\$325	111	\$1,300	157	\$550
18	\$1,500	66	\$950	112	\$1,000	158	\$300
19	\$2,100	67	\$1,100	113	\$325	159	\$500
20	\$500	68	\$1,000	114	\$375	160	\$1,500
21	\$300	69	\$2,000	115	\$1,200	161	\$550
22	\$800	70	\$1,000	116	\$1,800	162	\$550
23	\$475	71	\$1,000	117	\$550	163	\$5,000
24	\$4,000	72	\$500	118	\$350	164	\$900
26	\$4,000	73	\$425	119	\$225	165	\$1,500
27	\$1,700	74	\$400	120	\$2,700	166	\$4,000
28	\$325	75	\$650	121	\$2,200	167	\$650
29	\$750	76	\$600	122	\$2,000	168	\$550
30	\$500	77	\$650	123	\$1,100	169	\$375
31	\$500	78	\$1,100	124	\$900	170	\$500
32	\$300	79	\$1,000	125	\$1,100	171	\$6,750
33	\$650	80	\$650	126	\$600	172	\$1,900
34	\$2,000	81	\$300	127	\$250	173	\$425
35	\$650	82	\$325	128	\$300	174	\$800
36	\$600	83	\$250	129	\$650	175	\$1,700
37	\$475	84	\$275	130	\$350	176	\$650
39	\$700	85	\$275	131	\$225	177	\$1,400
40	\$800	86	\$550	132	\$400	178	\$850
41	\$700	87	\$325	133	\$800	179	\$850
42	\$750	88	\$325	134	\$650	180	\$325
43	\$350	89	\$160	135	\$850	181	\$375
44	\$850	90	\$325	136	\$375	182	\$16,000
45	\$1,000	91	\$350	137	\$2,900	183	\$700
46	\$475	92	\$500	138	\$1,500	184	\$500
47	\$2,600	93	\$1,300	139	\$900	185	\$2,600
48	\$1,600	94	\$500	140	\$1,600	186	\$375

Prices Realized

Auction No.: 745

Lot No.	Realized	Lot No.	Realized	Lot No.	Realized	Lot No.	Realized
187	\$275	241	\$1,100	293	\$300	348	\$3,250
188	\$650	242	\$950	294	\$1,600	349	\$425
189	\$600	243	\$375	295	\$1,100	350	\$450
190	\$600	244	\$300	296	\$350	351	\$450
191	\$300	245	\$225	299	\$750	352	\$1,800
192	\$1,000	246	\$400	300	\$275	353	\$650
193	\$1,200	247	\$550	301	\$1,900	354	\$475
195	\$375	248	\$400	302	\$2,400	355	\$850
196	\$750	249	\$1,200	303	\$3,250	356	\$950
197	\$325	250	\$700	304	\$800	357	\$1,200
198	\$275	251	\$3,000	305	\$900	358	\$800
199	\$1,000	252	\$4,750	306	\$275	359	\$350
200	\$1,000	253	\$1,400	307	\$550	360	\$225
201	\$325	254	\$1,200	308	\$900	361	\$375
202	\$275	255	\$180	309	\$450	362	\$1,100
203	\$700	256	\$425	310	\$400	363	\$1,300
204	\$550	257	\$225	311	\$450	364	\$475
205	\$400	258	\$650	312	\$600	365	\$850
206	\$2,200	259	\$550	313	\$200	366	\$700
207	\$275	260	\$325	314	\$200	367	\$500
208	\$500	261	\$950	315	\$450	368	\$750
209	\$1,000	262	\$650	316	\$1,800	369	\$850
210	\$1,300	263	\$650	317	\$500	370	\$850
211	\$275	264	\$375	319	\$275	372	\$375
213	\$950	265	\$400	320	\$130	374	\$1,100
214	\$1,100	266	\$2,100	321	\$250	375	\$400
215	\$1,500	267	\$700	322	\$2,300	376	\$400
216	\$1,400	268	\$550	323	\$225	378	\$1,000
217	\$350	269	\$2,900	324	\$110	379	\$850
218	\$300	270	\$1,500	325	\$225	380	\$750
219	\$475	271	\$250	326	\$190	381	\$1,900
220	\$350	272	\$1,100	327	\$200	382	\$800
221	\$550	273	\$3,250	328	\$400	383	\$325
222	\$1,200	274	\$2,200	329	\$170	384	\$160
223	\$850	275	\$1,000	330	\$425	385	\$450
224	\$950	276	\$850	331	\$200	386	\$180
225	\$2,000	277	\$550	332	\$900	387	\$500
226	\$1,300	278	\$325	333	\$425	389	\$650
227	\$1,600	279	\$650	334	\$375	390	\$375
228	\$2,100	280	\$450	335	\$1,400	392	\$700
229	\$180	281	\$2,400	336	\$800	393	\$500
230	\$900	282	\$500	337	\$600	394	\$300
231	\$425	283	\$750	338	\$1,700	395	\$800
232	\$800	284	\$400	339	\$1,300	396	\$1,800
233	\$1,300	285	\$500	340	\$350	397	\$900
234	\$800	286	\$400	341	\$1,600	398	\$1,100
235	\$550	287	\$850	342	\$1,200	399	\$425
236	\$200	288	\$325	343	\$550	400	\$500
237	\$500	289	\$375	344	\$275	401	\$1,900
238	\$500	290	\$750	345	\$550	402	\$700
239	\$1,900	291	\$850	346	\$475	403	\$950
240	\$2,000	292	\$950	347	\$550	404	\$275

Prices Realized

Auction No.: 745

Lot No.	Realized	Lot No.	Realized	Lot No.	Realized	Lot No.	Realized
406	\$1,500	462	\$2,000	521	\$375	574	\$400
407	\$1,300	463	\$850	522	\$190	575	\$400
408	\$800	464	\$475	524	\$950	576	\$950
409	\$1,500	465	\$200	525	\$425	577	\$275
410	\$650	467	\$1,100	526	\$550	578	\$275
411	\$1,000	468	\$400	527	\$1,000	579	\$150
412	\$1,700	469	\$325	528	\$400	581	\$275
413	\$800	470	\$600	529	\$450	582	\$190
414	\$5,250	471	\$275	530	\$300	584	\$550
415	\$2,700	472	\$1,800	531	\$700	585	\$500
416	\$2,100	475	\$7,500	532	\$1,500	586	\$275
417	\$4,750	476	\$200	533	\$2,900	587	\$3,750
418	\$3,000	477	\$2,600	534	\$1,100	588	\$5,000
419	\$3,250	478	\$1,100	535	\$1,900	589	\$5,250
420	\$750	479	\$600	536	\$325	590	\$400
421	\$600	480	\$475	537	\$450	591	\$550
422	\$475	482	\$550	538	\$1,000	592	\$275
423	\$2,700	483	\$350	539	\$2,900	593	\$225
424	\$475	484	\$1,500	540	\$650	594	\$1,000
425	\$300	485	\$100	541	\$3,750	595	\$1,500
426	\$850	486	\$1,100	542	\$1,700	596	\$600
427	\$450	487	\$1,200	543	\$750	597	\$1,300
428	\$950	488	\$550	544	\$275	598	\$425
429	\$325	490	\$950	545	\$180	599	\$350
430	\$700	492	\$600	546	\$350	600	\$300
431	\$700	493	\$225	547	\$275	601	\$275
433	\$1,600	494	\$120	548	\$200	602	\$275
434	\$1,000	495	\$600	549	\$140	603	\$375
435	\$90	496	\$47,500	550	\$400	604	\$500
436	\$1,500	497	\$600	551	\$500	605	\$3,250
437	\$375	499	\$2,000	552	\$400	606	\$700
438	\$700	500	\$600	553	\$950	607	\$250
439	\$2,000	501	\$850	554	\$475	608	\$375
440	\$225	502	\$400	555	\$250	609	\$700
442	\$225	503	\$5,000	556	\$1,100	610	\$2,900
443	\$250	504	\$425	557	\$450	611	\$400
444	\$300	505	\$225	558	\$500	612	\$650
445	\$1,200	506	\$475	559	\$200	613	\$400
446	\$650	507	\$1,100	560	\$800	614	\$1,400
447	\$200	508	\$800	561	\$2,000	615	\$325
448	\$350	509	\$1,200	562	\$850	616	\$450
450	\$250	510	\$1,300	563	\$1,100	617	\$375
451	\$225	511	\$1,200	564	\$600	619	\$400
452	\$750	512	\$650	565	\$2,400	620	\$400
453	\$150	513	\$550	566	\$475	621	\$325
455	\$400	514	\$900	567	\$650	622	\$350
456	\$225	515	\$900	568	\$450	623	\$110
457	\$450	516	\$550	569	\$400	624	\$180
458	\$325	517	\$2,600	570	\$350	625	\$550
459	\$950	518	\$6,250	571	\$425	626	\$550
460	\$225	519	\$2,000	572	\$300	627	\$2,000
461	\$1,100	520	\$450	573	\$375	628	\$200

Prices Realized

Auction No.: 745

Lot No.	Realized	Lot No.	Realized	Lot No.	Realized	Lot No.	Realized
629	\$90	683	\$475	735	\$4,750	787	\$375
630	\$500	684	\$190	736	\$3,000	788	\$425
631	\$375	685	\$550	737	\$1,800	789	\$475
632	\$450	686	\$275	738	\$1,300	790	\$350
633	\$275	687	\$1,700	739	\$550	791	\$180
634	\$250	688	\$950	740	\$750	792	\$400
635	\$375	689	\$650	741	\$1,100	793	\$325
636	\$650	690	\$900	742	\$700	794	\$130
637	\$250	691	\$800	743	\$375	795	\$325
638	\$160	692	\$2,000	744	\$4,500	796	\$700
639	\$150	693	\$1,100	745	\$1,600	797	\$375
641	\$90	694	\$900	746	\$1,200	798	\$750
642	\$375	695	\$850	747	\$1,400	799	\$325
643	\$300	696	\$1,700	748	\$500	800	\$1,000
644	\$325	697	\$800	749	\$550	801	\$425
645	\$375	698	\$475	750	\$225	802	\$1,200
647	\$400	699	\$2,600	751	\$180	803	\$450
648	\$225	700	\$600	752	\$4,500	804	\$425
649	\$300	701	\$1,200	753	\$375	805	\$1,100
650	\$110	702	\$900	754	\$1,100	806	\$375
651	\$300	703	\$2,500	755	\$425	807	\$1,100
652	\$275	704	\$1,100	756	\$375	808	\$3,750
653	\$225	705	\$3,500	757	\$600	809	\$1,800
654	\$500	706	\$1,100	758	\$450	810	\$1,300
655	\$750	707	\$425	759	\$300	811	\$2,600
656	\$400	708	\$400	760	\$950	812	\$1,700
657	\$1,200	709	\$750	761	\$750	813	\$750
658	\$900	710	\$450	762	\$500	814	\$1,000
659	\$650	711	\$3,250	763	\$550	815	\$500
660	\$550	712	\$1,700	764	\$450	816	\$325
661	\$300	713	\$950	765	\$450	817	\$2,000
662	\$250	714	\$550	766	\$550	818	\$1,300
663	\$275	715	\$2,400	767	\$750	819	\$1,000
664	\$275	716	\$1,200	768	\$650	820	\$950
665	\$225	717	\$1,600	769	\$350	821	\$750
666	\$450	718	\$150	770	\$1,000	822	\$1,800
667	\$300	719	\$650	771	\$650	823	\$700
668	\$650	720	\$800	772	\$375	824	\$500
669	\$800	721	\$225	773	\$850	825	\$900
670	\$1,100	722	\$350	774	\$600	826	\$800
671	\$225	723	\$275	775	\$1,500	827	\$800
672	\$225	724	\$475	776	\$1,000	828	\$550
673	\$200	725	\$2,100	777	\$850	829	\$900
674	\$1,100	726	\$400	778	\$750	830	\$150
675	\$110	727	\$275	779	\$500	831	\$1,200
676	\$400	728	\$500	780	\$800	832	\$225
677	\$500	729	\$500	781	\$400	833	\$180
678	\$650	730	\$450	782	\$500	834	\$275
679	\$200	731	\$2,400	783	\$1,100	835	\$350
680	\$325	732	\$2,100	784	\$400	836	\$750
681	\$1,000	733	\$1,600	785	\$650	837	\$500
682	\$1,200	734	\$1,100	786	\$300	838	\$2,300

Prices Realized

Auction No.: 745

Lot No.	Realized	Lot No.	Realized	Lot No.	Realized	Lot No.	Realized
839	\$500	894	\$1,000	948	\$3,750	1001	\$425
840	\$250	895	\$200	949	\$375	1002	\$900
841	\$350	896	\$500	950	\$600	1003	\$600
842	\$425	897	\$650	951	\$500	1004	\$1,100
843	\$160	898	\$275	952	\$650	1005	\$600
844	\$275	899	\$275	954	\$300	1006	\$300
845	\$500	900	\$350	955	\$450	1007	\$400
846	\$650	901	\$375	956	\$500	1008	\$400
847	\$180	902	\$250	957	\$450	1009	\$300
848	\$550	903	\$225	958	\$350	1010	\$400
849	\$300	904	\$225	959	\$375	1011	\$475
850	\$225	905	\$180	960	\$950	1012	\$500
851	\$400	906	\$350	961	\$850	1013	\$400
852	\$500	907	\$225	962	\$400	1014	\$275
853	\$300	908	\$425	963	\$2,800	1015	\$3,750
854	\$325	909	\$250	964	\$3,500	1016	\$375
855	\$350	911	\$550	965	\$1,000	1017	\$700
856	\$475	912	\$250	966	\$325	1018	\$450
857	\$300	913	\$180	967	\$550	1019	\$750
858	\$500	914	\$130	968	\$1,100	1020	\$325
859	\$550	915	\$475	969	\$500	1021	\$400
860	\$100	916	\$500	970	\$1,500	1022	\$500
861	\$900	917	\$600	971	\$1,200	1023	\$900
862	\$1,000	918	\$800	972	\$600	1024	\$550
863	\$450	919	\$425	973	\$450	1025	\$2,100
864	\$650	921	\$375	974	\$275	1026	\$325
866	\$500	922	\$550	975	\$400	1027	\$550
867	\$1,300	923	\$1,100	976	\$425	1028	\$170
868	\$1,000	924	\$475	977	\$275	1029	\$550
869	\$800	925	\$350	978	\$450	1030	\$550
870	\$500	926	\$400	979	\$950	1031	\$4,250
871	\$425	927	\$2,600	980	\$1,300	1032	\$3,250
872	\$850	928	\$400	981	\$800	1033	\$1,500
873	\$475	929	\$2,700	982	\$450	1034	\$450
874	\$275	930	\$550	983	\$550	1035	\$550
875	\$2,200	931	\$950	984	\$500	1036	\$600
877	\$500	932	\$140	985	\$425	1037	\$250
879	\$450	933	\$1,800	986	\$650	1038	\$425
880	\$900	934	\$3,500	987	\$800	1039	\$325
881	\$275	935	\$2,900	988	\$300	1040	\$900
882	\$600	936	\$750	989	\$850	1041	\$250
883	\$250	937	\$425	990	\$750	1042	\$375
884	\$950	938	\$325	991	\$350	1043	\$1,500
885	\$425	939	\$350	992	\$300	1044	\$1,100
886	\$500	940	\$1,900	993	\$400	1045	\$550
887	\$500	941	\$1,300	994	\$600	1046	\$160
888	\$350	942	\$700	995	\$150	1047	\$1,400
889	\$375	943	\$2,500	996	\$140	1048	\$160
890	\$225	944	\$1,200	997	\$375	1049	\$275
891	\$550	945	\$5,000	998	\$250	1050	\$1,700
892	\$850	946	\$700	999	\$190	1051	\$950
893	\$750	947	\$2,100	1000	\$1,400	1052	\$750

Prices Realized

Auction No.: 745

Lot No.	Realized	Lot No.	Realized	Lot No.	Realized	Lot No.	Realized
1053	\$325	1105	\$550	1157	\$500	1210	\$375
1054	\$650	1106	\$475	1158	\$375	1211	\$650
1055	\$450	1107	\$1,500	1159	\$375	1212	\$700
1056	\$375	1108	\$600	1160	\$500	1213	\$1,100
1057	\$550	1109	\$800	1161	\$350	1214	\$1,800
1058	\$650	1110	\$1,000	1162	\$325	1215	\$275
1059	\$2,000	1111	\$600	1163	\$375	1216	\$250
1060	\$1,400	1112	\$425	1164	\$325	1217	\$350
1061	\$1,100	1113	\$1,400	1165	\$950	1218	\$300
1062	\$600	1114	\$350	1166	\$475	1219	\$600
1063	\$2,800	1115	\$750	1167	\$190	1220	\$475
1064	\$1,300	1116	\$750	1168	\$275	1221	\$300
1065	\$2,000	1117	\$400	1170	\$400	1222	\$650
1066	\$700	1118	\$325	1171	\$400	1223	\$500
1067	\$500	1119	\$350	1172	\$550	1224	\$900
1068	\$600	1120	\$500	1173	\$550	1225	\$450
1069	\$1,700	1121	\$275	1174	\$1,100	1226	\$375
1070	\$4,000	1122	\$1,300	1175	\$600	1227	\$850
1071	\$600	1123	\$1,900	1176	\$900	1228	\$550
1072	\$4,500	1124	\$1,500	1177	\$475	1229	\$5,750
1073	\$850	1125	\$1,200	1178	\$650	1230	\$550
1074	\$950	1126	\$325	1179	\$425	1231	\$850
1075	\$750	1127	\$650	1180	\$650	1232	\$550
1076	\$400	1128	\$275	1181	\$750	1233	\$2,200
1077	\$150	1129	\$425	1182	\$900	1234	\$400
1078	\$500	1130	\$1,700	1183	\$1,500	1235	\$400
1079	\$425	1131	\$500	1184	\$4,000	1236	\$800
1080	\$600	1132	\$350	1185	\$2,900	1237	\$180
1081	\$350	1133	\$600	1186	\$180	1238	\$850
1082	\$650	1134	\$325	1187	\$800	1239	\$600
1083	\$500	1135	\$550	1188	\$700	1240	\$1,100
1084	\$550	1136	\$400	1189	\$950	1241	\$500
1085	\$550	1137	\$350	1190	\$1,000	1242	\$900
1086	\$425	1138	\$1,200	1191	\$350	1243	\$750
1087	\$1,200	1139	\$275	1192	\$600	1244	\$700
1088	\$350	1140	\$200	1193	\$1,200	1245	\$800
1089	\$300	1141	\$650	1194	\$800	1246	\$1,200
1090	\$850	1142	\$700	1195	\$800	1247	\$850
1091	\$650	1143	\$475	1196	\$450	1248	\$375
1092	\$650	1144	\$300	1197	\$350	1249	\$350
1093	\$325	1145	\$200	1198	\$325	1250	\$550
1094	\$180	1146	\$1,300	1199	\$550	1251	\$225
1095	\$600	1147	\$350	1200	\$500	1252	\$250
1096	\$550	1148	\$300	1201	\$250	1253	\$500
1097	\$400	1149	\$550	1202	\$140	1254	\$425
1098	\$250	1150	\$1,000	1203	\$225	1255	\$325
1099	\$325	1151	\$350	1204	\$375	1256	\$350
1100	\$275	1152	\$475	1205	\$180	1257	\$225
1101	\$350	1153	\$900	1206	\$150	1258	\$325
1102	\$550	1154	\$500	1207	\$250	1259	\$375
1103	\$450	1155	\$275	1208	\$250	1260	\$850
1104	\$225	1156	\$900	1209	\$850	1261	\$750

Prices Realized

Auction No.: 745

Lot No.	Realized	Lot No.	Realized	Lot No.	Realized	Lot No.	Realized
1262	\$450	1314	\$800	1366	\$500	1419	\$1,200
1263	\$450	1315	\$275	1367	\$1,200	1420	\$750
1264	\$475	1316	\$250	1368	\$400	1421	\$180
1265	\$850	1317	\$500	1369	\$325	1422	\$250
1266	\$600	1318	\$375	1370	\$275	1423	\$1,300
1267	\$1,000	1319	\$100	1371	\$900	1424	\$600
1268	\$250	1320	\$375	1373	\$140	1425	\$130
1269	\$600	1321	\$600	1374	\$900	1426	\$375
1270	\$500	1322	\$850	1375	\$800	1427	\$250
1271	\$550	1323	\$400	1376	\$600	1428	\$475
1272	\$350	1324	\$5,250	1377	\$550	1429	\$2,600
1273	\$550	1325	\$325	1378	\$550	1430	\$500
1274	\$1,500	1326	\$275	1379	\$550	1431	\$300
1275	\$1,700	1327	\$600	1380	\$500	1432	\$1,300
1276	\$550	1328	\$475	1381	\$500	1433	\$500
1277	\$1,000	1329	\$700	1382	\$425	1434	\$425
1278	\$1,100	1330	\$700	1383	\$375	1435	\$1,500
1279	\$350	1331	\$5,000	1384	\$325	1436	\$500
1280	\$550	1332	\$500	1385	\$300	1437	\$475
1281	\$850	1333	\$1,000	1386	\$2,200	1438	\$1,500
1282	\$500	1334	\$1,100	1387	\$2,900	1439	\$300
1283	\$750	1335	\$450	1388	\$400	1440	\$900
1284	\$650	1336	\$450	1389	\$350	1441	\$500
1285	\$425	1337	\$700	1390	\$375	1442	\$700
1286	\$3,750	1338	\$250	1391	\$3,250	1443	\$475
1287	\$850	1339	\$325	1392	\$400	1444	\$200
1288	\$1,000	1340	\$350	1393	\$700	1445	\$1,400
1289	\$1,100	1341	\$1,000	1394	\$1,500	1446	\$1,200
1290	\$400	1342	\$650	1395	\$275	1447	\$1,200
1291	\$450	1343	\$275	1396	\$550	1448	\$425
1292	\$100	1344	\$7,250	1397	\$750	1449	\$1,200
1293	\$400	1345	\$6,500	1398	\$800	1450	\$325
1294	\$375	1346	\$1,000	1399	\$225	1451	\$550
1295	\$225	1347	\$1,000	1400	\$375	1452	\$225
1296	\$1,000	1348	\$700	1401	\$800	1453	\$3,250
1297	\$550	1349	\$800	1402	\$950	1454	\$600
1298	\$650	1350	\$750	1403	\$550	1455	\$250
1299	\$600	1351	\$600	1404	\$275	1456	\$700
1300	\$900	1352	\$3,750	1405	\$425	1457	\$425
1301	\$750	1353	\$9,000	1406	\$600	1459	\$1,600
1302	\$1,200	1354	\$475	1407	\$1,200	1460	\$350
1303	\$500	1355	\$250	1408	\$275	1461	\$475
1304	\$300	1356	\$275	1409	\$325	1462	\$550
1305	\$450	1357	\$250	1410	\$650	1463	\$275
1306	\$475	1358	\$275	1411	\$475	1464	\$425
1307	\$425	1359	\$225	1412	\$400	1465	\$2,900
1308	\$1,400	1360	\$300	1413	\$425	1466	\$500
1309	\$200	1361	\$275	1414	\$250	1467	\$500
1310	\$850	1362	\$250	1415	\$750	1468	\$1,800
1311	\$700	1363	\$160	1416	\$550	1469	\$400
1312	\$600	1364	\$150	1417	\$950	1470	\$700
1313	\$2,600	1365	\$180	1418	\$475	1471	\$1,200

Prices Realized

Auction No.: 745

Lot No.	Realized	Lot No.	Realized	Lot No.	Realized	Lot No.	Realized
1472	\$350	1525	\$750	1577	\$500	1629	\$700
1473	\$1,600	1526	\$450	1578	\$250	1630	\$600
1474	\$1,500	1527	\$450	1579	\$400	1631	\$300
1475	\$600	1528	\$2,000	1580	\$800	1632	\$700
1476	\$1,700	1529	\$550	1581	\$650	1634	\$650
1477	\$3,250	1530	\$800	1582	\$650	1635	\$300
1478	\$1,100	1531	\$5,000	1583	\$600	1636	\$350
1479	\$650	1532	\$800	1584	\$900	1637	\$2,000
1480	\$1,600	1533	\$425	1585	\$500	1638	\$190
1481	\$400	1534	\$350	1586	\$700	1639	\$550
1482	\$450	1535	\$700	1587	\$300	1640	\$425
1483	\$500	1536	\$500	1588	\$475	1641	\$700
1484	\$475	1537	\$475	1589	\$550	1642	\$425
1485	\$1,000	1538	\$325	1590	\$500	1644	\$950
1486	\$750	1539	\$450	1591	\$550	1645	\$475
1487	\$450	1540	\$160	1592	\$325	1646	\$1,000
1488	\$450	1541	\$425	1593	\$475	1647	\$400
1489	\$350	1542	\$600	1594	\$600	1648	\$550
1490	\$275	1543	\$400	1595	\$1,200	1649	\$400
1491	\$1,800	1544	\$800	1596	\$1,000	1650	\$375
1492	\$450	1545	\$4,250	1597	\$1,300	1651	\$450
1493	\$700	1546	\$350	1598	\$1,200	1652	\$550
1494	\$300	1547	\$1,300	1599	\$2,500	1653	\$800
1495	\$1,100	1548	\$1,000	1600	\$600	1654	\$850
1496	\$375	1549	\$650	1601	\$350	1655	\$4,000
1497	\$1,700	1550	\$800	1602	\$600	1656	\$1,800
1498	\$425	1551	\$650	1603	\$1,500	1657	\$400
1499	\$1,100	1552	\$450	1604	\$2,100	1658	\$550
1500	\$375	1553	\$375	1605	\$550	1659	\$1,700
1501	\$500	1554	\$1,000	1606	\$950	1660	\$1,300
1502	\$300	1555	\$350	1607	\$500	1661	\$550
1504	\$700	1556	\$475	1608	\$3,750	1662	\$800
1505	\$300	1557	\$180	1609	\$500	1663	\$2,000
1506	\$1,200	1558	\$425	1610	\$550	1664	\$800
1507	\$600	1559	\$425	1611	\$1,000	1665	\$600
1508	\$190	1560	\$300	1612	\$600	1666	\$950
1509	\$1,600	1561	\$500	1613	\$500	1667	\$475
1510	\$550	1562	\$2,000	1614	\$500	1668	\$900
1511	\$700	1563	\$375	1615	\$500	1669	\$425
1512	\$300	1564	\$950	1616	\$600	1670	\$550
1513	\$500	1565	\$1,700	1617	\$5,000	1671	\$900
1514	\$650	1566	\$225	1618	\$800	1672	\$950
1515	\$800	1567	\$475	1619	\$550	1673	\$700
1516	\$350	1568	\$375	1620	\$1,300	1674	\$600
1517	\$375	1569	\$500	1621	\$2,600	1675	\$325
1518	\$1,800	1570	\$800	1622	\$475	1676	\$400
1519	\$300	1571	\$800	1623	\$700	1677	\$475
1520	\$425	1572	\$350	1624	\$700	1678	\$650
1521	\$550	1573	\$1,300	1625	\$1,300	1679	\$600
1522	\$375	1574	\$550	1626	\$325	1680	\$700
1523	\$425	1575	\$225	1627	\$600	1681	\$325
1524	\$600	1576	\$225	1628	\$600	1682	\$850

Prices Realized

Auction No.: 745

Lot No.	Realized	Lot No.	Realized	Lot No.	Realized	Lot No.	Realized
1683	\$325	1737	\$160	1794	\$1,100	1854	\$1,300
1684	\$300	1738	\$900	1795	\$650	1855	\$1,700
1685	\$300	1739	\$400	1796	\$900	1856	\$700
1686	\$200	1741	\$475	1797	\$325	1857	\$1,400
1687	\$250	1742	\$500	1798	\$1,100	1858	\$1,100
1688	\$550	1743	\$375	1799	\$3,000	1860	\$325
1689	\$375	1744	\$275	1800	\$600	1861	\$425
1690	\$650	1745	\$700	1801	\$500	1862	\$450
1691	\$550	1746	\$425	1802	\$600	1863	\$900
1692	\$400	1747	\$275	1803	\$475	1864	\$350
1693	\$475	1748	\$750	1804	\$1,100	1865	\$300
1694	\$750	1749	\$1,900	1805	\$350	1866	\$1,200
1695	\$200	1750	\$300	1806	\$450	1867	\$375
1696	\$375	1751	\$650	1807	\$650	1868	\$1,800
1697	\$475	1752	\$425	1808	\$275	1869	\$170
1698	\$1,000	1753	\$350	1809	\$1,200	1870	\$200
1699	\$200	1754	\$750	1812	\$350	1871	\$250
1700	\$650	1755	\$350	1813	\$500	1872	\$700
1702	\$600	1756	\$180	1815	\$475	1873	\$350
1703	\$110	1757	\$375	1816	\$150	1874	\$1,000
1704	\$180	1758	\$850	1817	\$325	1875	\$1,200
1705	\$475	1759	\$700	1818	\$1,500	1876	\$1,400
1706	\$400	1760	\$450	1819	\$450	1877	\$3,250
1707	\$375	1761	\$650	1820	\$425	1878	\$325
1708	\$200	1762	\$425	1821	\$800	1879	\$650
1710	\$425	1763	\$1,700	1822	\$1,000	1880	\$500
1711	\$200	1764	\$425	1823	\$650	1881	\$425
1712	\$350	1765	\$550	1825	\$1,800	1882	\$550
1713	\$400	1767	\$650	1826	\$800	1883	\$400
1714	\$475	1768	\$350	1827	\$350	1884	\$600
1715	\$300	1769	\$850	1828	\$325	1885	\$350
1716	\$400	1771	\$750	1829	\$475	1886	\$500
1717	\$550	1773	\$500	1830	\$750	1887	\$1,000
1718	\$250	1774	\$950	1831	\$275	1888	\$750
1719	\$1,400	1775	\$950	1832	\$180	1889	\$550
1720	\$2,700	1776	\$1,400	1833	\$800	1890	\$550
1721	\$350	1778	\$900	1837	\$700		
1722	\$375	1779	\$500	1838	\$850		
1723	\$190	1780	\$225	1839	\$650		
1724	\$190	1781	\$350	1841	\$1,100		
1725	\$800	1782	\$700	1842	\$500		
1726	\$450	1783	\$350	1843	\$325		
1727	\$275	1784	\$450	1844	\$450		
1728	\$300	1785	\$400	1845	\$375		
1729	\$275	1786	\$275	1846	\$275		
1730	\$800	1787	\$650	1847	\$400		
1731	\$325	1788	\$275	1848	\$800		
1732	\$400	1789	\$160	1849	\$750		
1733	\$250	1790	\$400	1850	\$1,400		
1734	\$225	1791	\$425	1851	\$550		
1735	\$400	1792	\$110	1852	\$550		
1736	\$200	1793	\$800	1853	\$3,500		