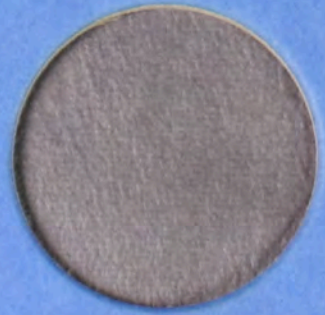




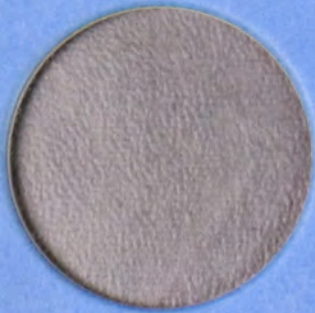
1937
9.5 MILLION



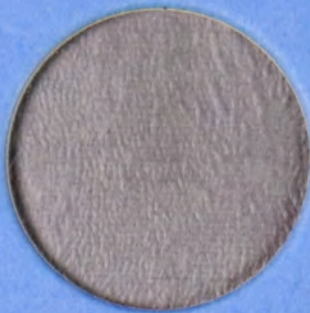
1937-D
1.8 MILLION



1937-S
2.1 MILLION



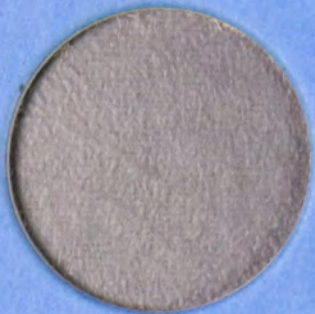
1938
4.1 MILLION



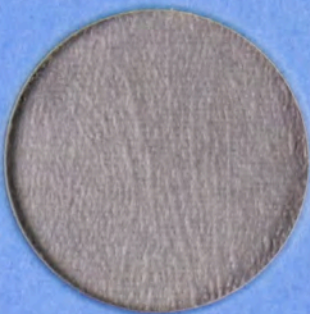
1938-D
491.6 THOUSAND



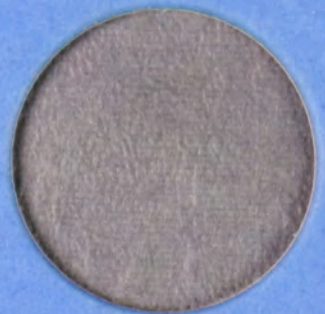
1939
6.8 MILLION



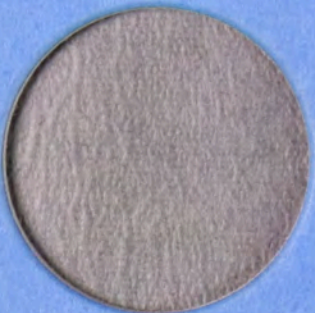
1939-D
4.3 MILLION



1939-S
2.6 MILLION



1940
9.2 MILLION



1940-S
4.6 MILLION



1941
24.2 MILLION



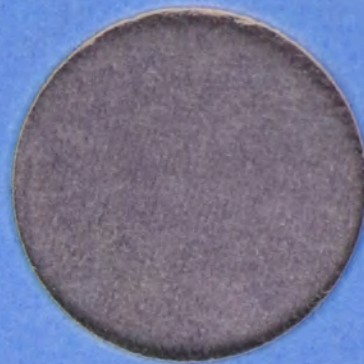
1941-D
11.2 MILLION



1941-S
8.1 MILLION



1942
47.8 MILLION



1942-D
11 MILLION



1942-S
12.7 MILLION



1943
53.2 MILLION



1943-D
11.3 MILLION



1943-S
13.5 MILLION



1944
28.2 MILLION



1944-D
9.8 MILLION



1944-S
8.9 MILLION



1945
31.5 MILLION



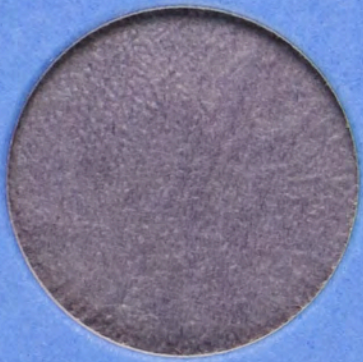
1945-D
10 MILLION



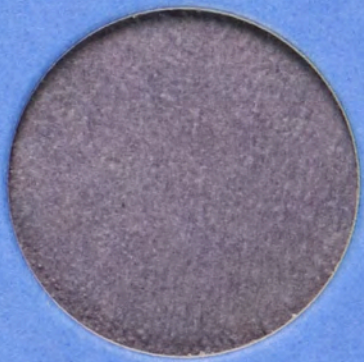
1945-S
10.2 MILLION



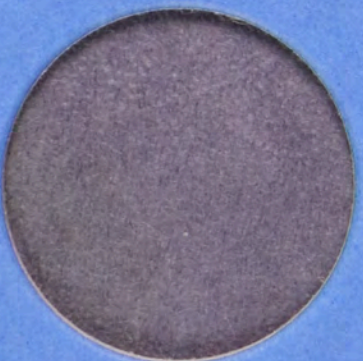
1946
12.1 MILLION



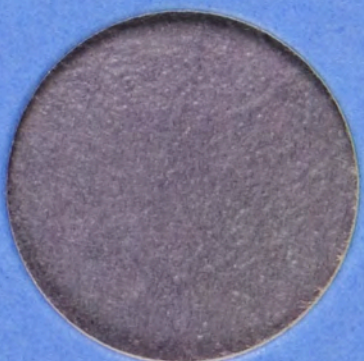
1946-D
2.2 MILLION



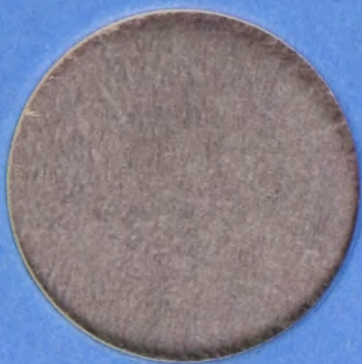
1946-S
3.7 MILLION



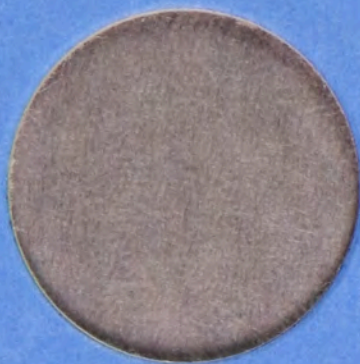
1947
4.1 MILLION



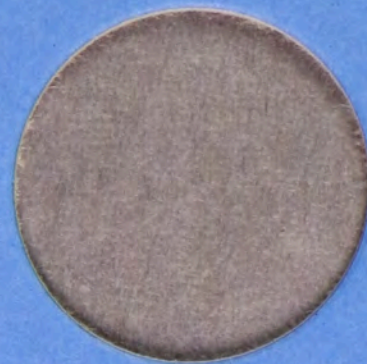
1947-D
3.9 MILLION



1916
608 THOUSAND



1916-D on Obv.
1 MILLION



1916-S on Obv.
508 THOUSAND



1917
12.3 MILLION



1917-D on Obv.
765.4 THOUSAND



1917-D on Rev.
1.9 MILLION



1917-S on Obv.
952 THOUSAND



1917-S on Rev.
5.6 MILLION



1918
6.6 MILLION



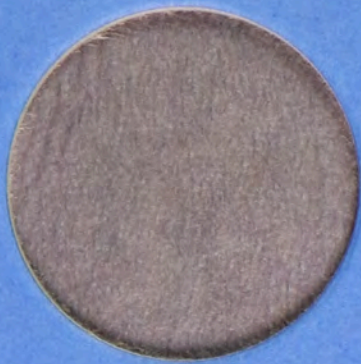
1918-D
3.9 MILLION



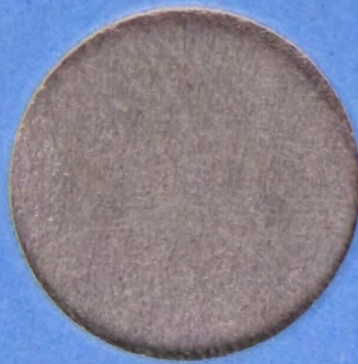
1918-S
10.3 MILLION



1919
962 THOUSAND



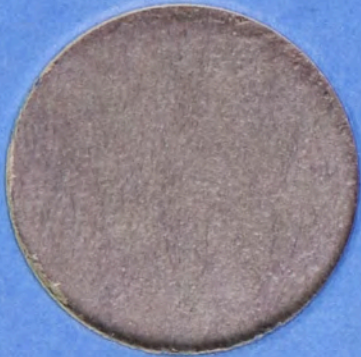
1919-D
1.2 MILLION



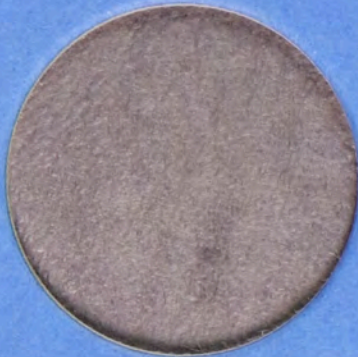
1919-S
1.6 MILLION



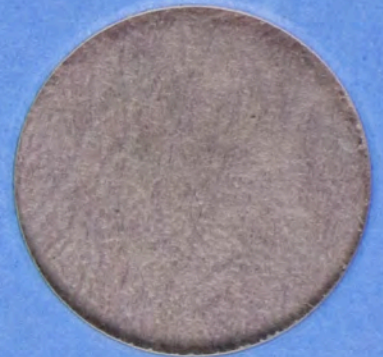
1920
6.4 MILLION



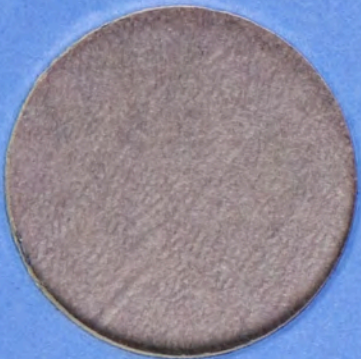
1920-D
1.6 MILLION



1920-S
4.6 MILLION



1921
246 THOUSAND



1921-D
208 THOUSAND



1921-S
548 THOUSAND



1923-S
2.2 MILLION



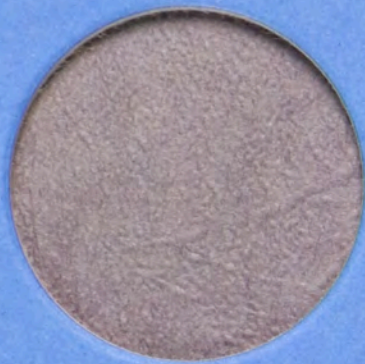
1927-S
2.4 MILLION



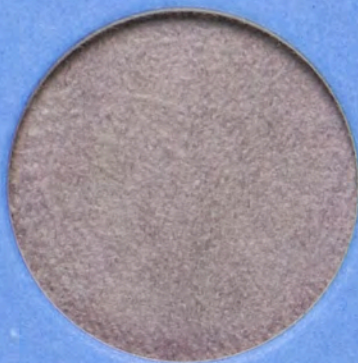
1928-S
1.9 MILLION



1929-D
1 MILLION



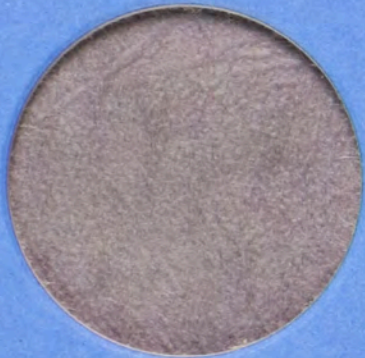
1929-S
1.9 MILLION



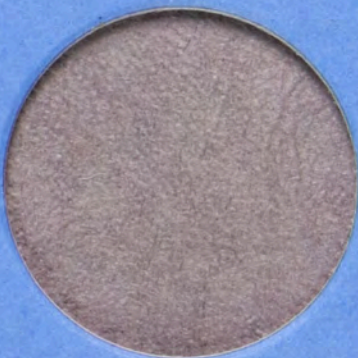
1933-S
1.8 MILLION



1934
7 MILLION



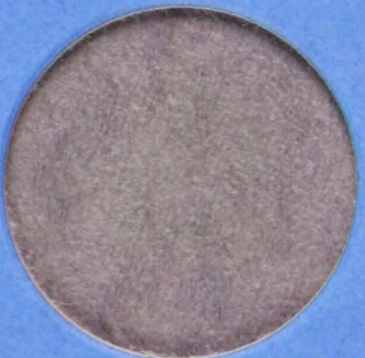
1934-D
2.4 MILLION



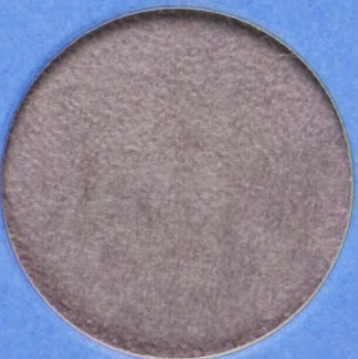
1934-S
3.7 MILLION



1935
9.2 MILLION



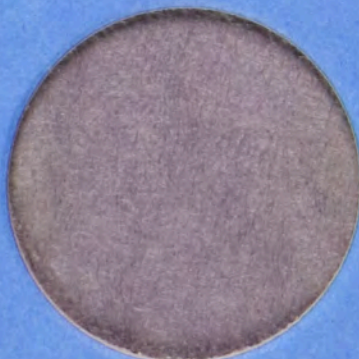
1935-D
3 MILLION



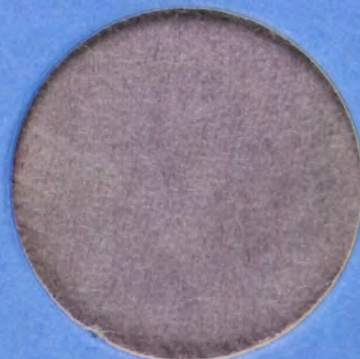
1935-S
3.9 MILLION



1936
12.6 MILLION



1936-D
4.3 MILLION



1936-S
3.9 MILLION