


# POSTAGE

Printed by the National Bank Note Co.

1861

First Issue

Perforated 12

Designs of Second Issue 1 C INDIGO  (55)	3 C BROWN ROSE  (56)	5 C BROWN  (57)	10 C DARK GREEN  (58)	  (59)
---	----------------------------------	--------------------------	--------------------------------	---

24 C VIOLET  (60)	30 C RED ORANGE  (61)	90 C DULL BLUE  (62)
----------------------------	--------------------------------	-------------------------------

1861-62

Second Issue



1861-66



# POSTAGE

Printed by the American Bank Note Co.

1879

Soft Porous Paper



1882



1881-82

Designs of Issue of 1873 Re-engraved



1883



209b

# POSTAGE

Printed by the American Bank Note Co,  
1887



1888



1890-93



# POSTAGE

Printed by the American Bank Note Co.

Columbian Exposition Issue

1893



230 a



231 c (B.H.)



(240)



(241)



(242)



(243)



(244)



(245)

# POSTAGE

## Trans-Mississippi Exposition Issue

Watermarked **USPS**

1898



(292)



(293)

# POSTAGE

Watermarked USPS

1902-03



1906-08

Imperforate



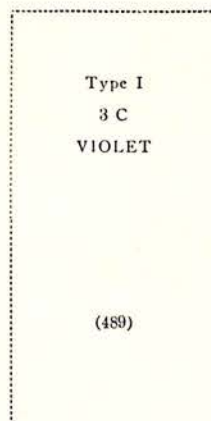
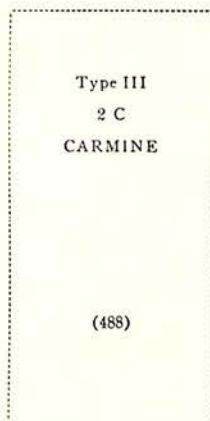
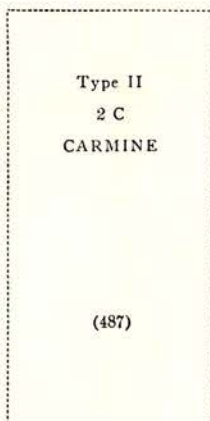
1903-06



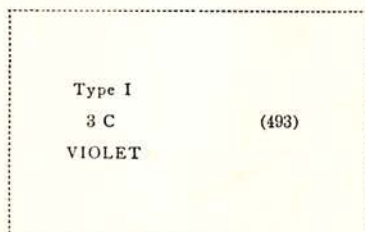
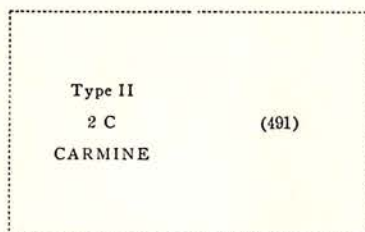
# POSTAGE

Unwatermarked  
ROTARY PRESS COIL STAMPS  
1916-19

Perforated 10 Horizontally



1916-22  
Perforated 10 Vertically



# POSTAGE

Century of Progress Issue  
American Philatelic Society Exhibition  
August, 1933  
Chicago, Illinois





# POSTAGE

Century of Progress Issue  
American Philatelic Society Exhibition  
August, 1933  
Chicago, Illinois



# POSTAGE

Unwatermarked  
ROTARY PRESS COIL STAMPS  
1939

Perforated 10 Vertically



Perforated 10 Horizontally



# AIR POST STAMPS

1918  
Unwatermarked  
Perforated 11



1923



1926-27



1927



1928



1930



# SPECIAL DELIVERY

Unwatermarked

Perforated 12

1885



1888



1893



1894



Watermarked USPS

Perforated 12

1895



1908



1902



Watermarked USPS

Perforated 12

1911



Perforated 10

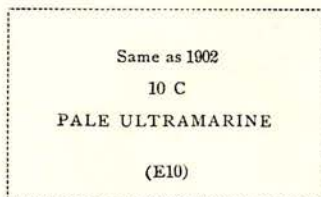
1914



Unwatermarked

Perforated 10

1916



Perforated 11

1917



Perforated 11

1922



1925

Perforated 11



1927

Rotary Press Printing

Perforated 11x10½

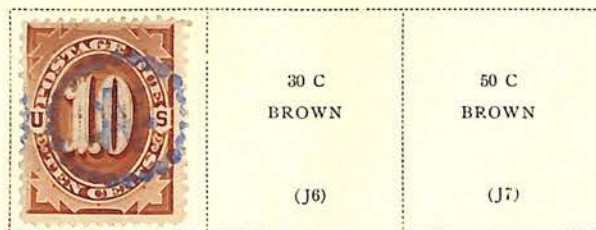


# POSTAGE DUE

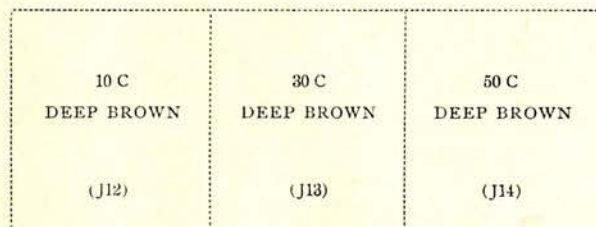
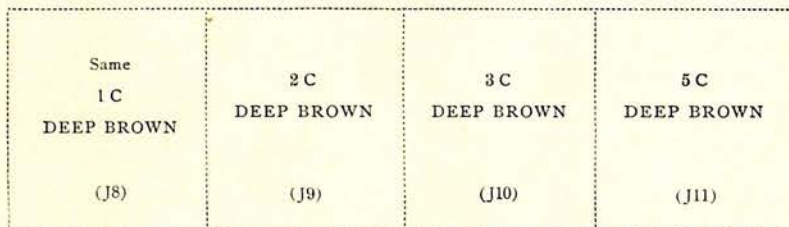
Unwatermarked

Perforated 12

1879

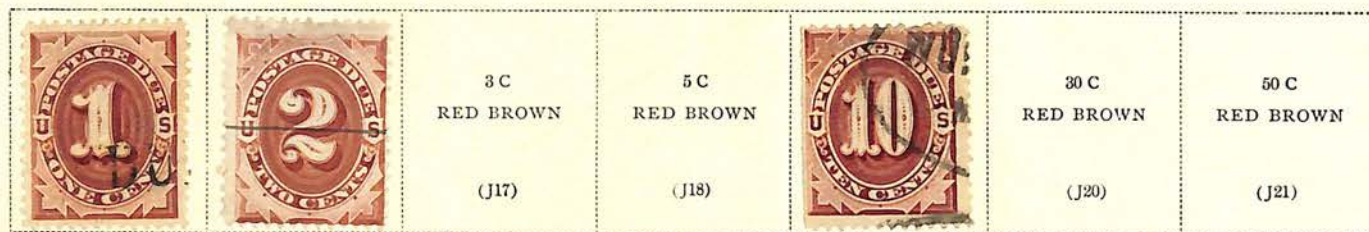


## SPECIAL PRINTING

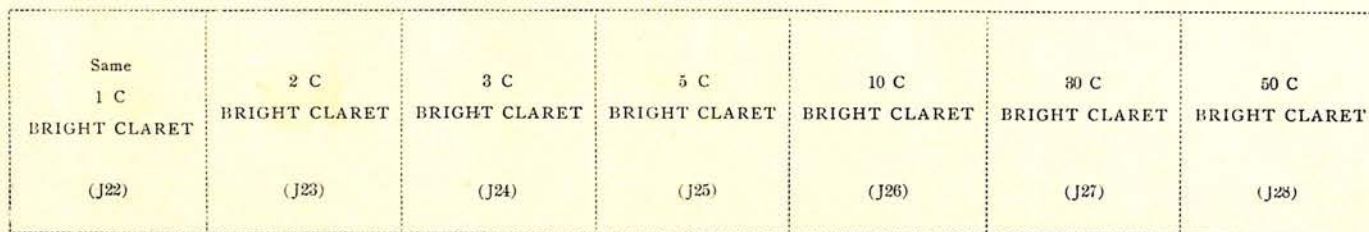


1887-89

Regular Issue



1891-93



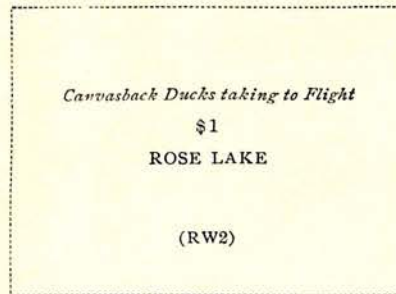
# HUNTING PERMIT STAMPS

Department of Agriculture  
Unwatermarked  
Flat Plate Printing  
Perforated 11

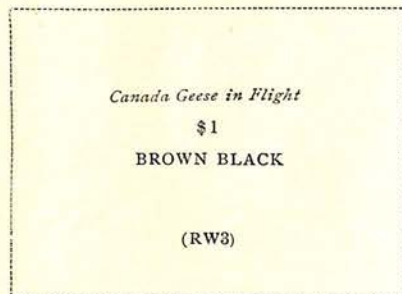
1934



1935



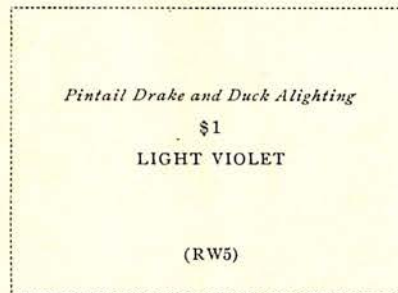
1936



1937



1938



## Department of the Interior

1939



1940



1941

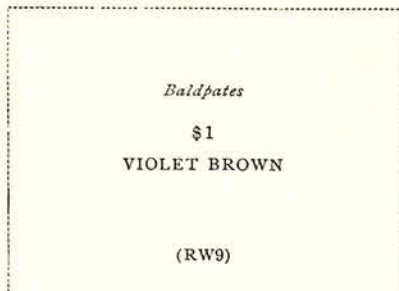


# HUNTING PERMIT STAMPS

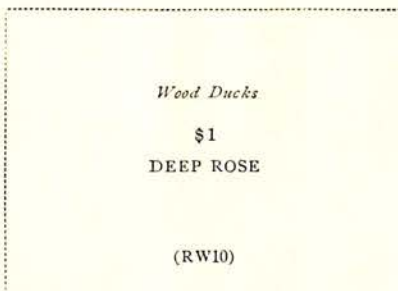
Department of the Interior

Unwatermarked  
Flat Plate Printing  
Perforated 11

1942



1943



1944



1945



1946



1947



1948



160100

# HUNTING PERMIT STAMPS

Department of the Interior

Unwatermarked

Flat Plate Printing

Perforated 11

1949



161533

1951



1952



1953



1954



1955



1956





# HUNTING PERMIT STAMPS

Department of the Interior

Unwatermarked

Flat Plate Printing

Perforated 11

1957



1958



Glori Press Printing

1959



1960



1961



1962



1963



# HUNTING PERMIT STAMPS

Department of the Interior

Unwatermarked

Giori Press Printing

Perforated 11

1964



1965



1966



1967



1968



1969



# HUNTING PERMIT STAMPS

Department of the Interior

Unwatermarked

Giori Press Printing

Perforated 11

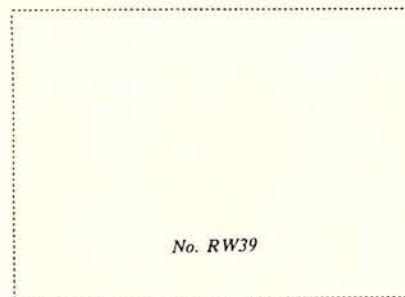
1970



1971



1972



UNITED STATES



# OFFICES ABROAD

## Offices in China

Unwatermarked

1919

<p><b>SHANGHAI</b> <b>2¢</b> <b>CHINA</b> On 1 C GREEN</p>	<p>United States Stamps of 1917-19 Surcharged 4 C On 2 C ROSE (K2)</p>	<p>6 C On 3 C VIOLET  (K3)</p>	<p>8 C On 4 C BROWN  (K4)</p>	<p>10 C On 5 C BLUE  (K5)</p>
--	--	--	---	---

<p>12 C On 6 C RED ORANGE  (K6)</p>				<p>20 C On 10 C ORANGE YELLOW  (K10)</p>
---	---	---	--	--

<p>24 C On 12 C BROWN CARMINE  (K11)</p>	<p>30 C On 15 C GRAY  (K12)</p>	<p>40 C On 20 C ULTRAMARINE  (K13)</p>	<p>60 C On 30 C ORANGE RED  (K14)</p>
--	---	--	---

<p>\$1 On 50 C LIGHT VIOLET  (K15)</p>	<p>\$2 On \$1 VIOLET BROWN  (K16)</p>
--	---

1922

<p>Surcharged <b>SHANGHAI</b> <b>2 Cts.</b> <b>CHINA</b> On 1 C GREEN</p>	<p>4 C On 2 C CARMINE  (K18)</p>
---	--

# PARCEL POST

1912-13

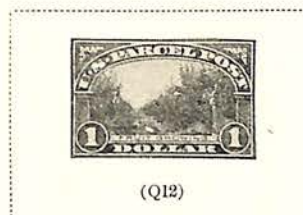
Watermarked USPS



(Q10)



(Q11)



(Q12)

# SPECIAL HANDLING

1925-29

Unwatermarked

