



10 c. lilac gray, perf. 12 1/2-12, LPOG, with some paperstructure on reverse, origin thus, unique preserved colour



12 1/2 c., rose lilac, perf. 13, LPOG, with paperstructure on reverse, origin thus, unique preserved colour with





1870-93, Unitrade: 37b
3 c., indian red, small queen, MH, perf.
11 1/2 x 12, light creases in bottom left



10 c., pale lilac-magenta, thick wove
paper, perf. 12, light vertical crease and
one short tooth, still a scarce and
desirable item, CV £700, F-VF1



1860-63, SG. 11
2 c., grey purple, yellowish paper, block of four from the left margin with imprint AMERICAN BANK NOTE (Co. NEW



1860-63, SG. 15
8 1/2 c., yellow-green, block of (4), perf. 12, yellowish paper, MNH/MH, very



1861/66, USA
1 c., dark blue, type II, used, SUP - XF!



1861/66, USA
5 c., brown, type II, used, VF!





The Philatelic Foundation

70 West 40th Street • 15th Floor
New York, NY 10018

No. 478451
07/17/2009

EXPERT COMMITTEE

We have examined the enclosed item, of which a photograph is attached, and *described by the applicant* as follows:

Country: UNITED STATES OF AMERICA

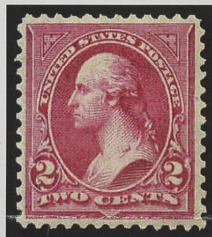
Cat. No.	Issue	Denom.	Color
252	1895	2¢	carmine

Scott's unless otherwise specified.

UNUSED, OG

AND WE ARE OF THE OPINION THAT:

IT IS GENUINE, PREVIOUSLY HINGED AT BOTTOM *****



478451

F 195481

Photocopies of this Certificate are not valid.

For The Expert Committee
Chairman

Submitted by

DANIEL WEISSMANN

ohne Vz. Anlage 18957

