

International: Airmail, to Europe

Cold War Politics:

Czechoslovakia refused all mail bearing the Masaryk commemoratives.
Such mail was returned to sender RETOUR with a bilingual Non-Admissable label.



Single weight, 1-cent overpaid. 8c Masaryk 4c (2) + 8c



Double weight franking, 1-cent overpaid. 8c Masaryk (4)
Returned to sender, insufficient address.

Marie Kautovská
6141 W. Cermak Rd.
Chicago 50, Ill. U.S.A.



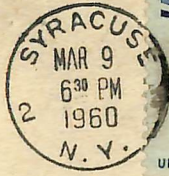
Non admis
Nepřipustné

Pani
Anna Jerlingová
Praha - F. - Holesovice
na Maninách 32.

RETOUR

Czechoslovakia

CZECHS RETURNED
BECAUSE OF MASARYK
STAMP



Non admis
Nepřipustné

Miss Eva Maslanova,
488 J. Fucika Ulica,
Otrokovice, Morava,
CZECHOSLOVAKIA

Retour



Giori Press Extra Ink Past The Plate Bend

by J.W. Harkleroad

This is an update of the previous article concerning extra ink line(s) in the margin(s) of the Giori Press printings. (See: "A 'Normal EFO", Feb. '83, Collector.)

As noted in the previous article, beginning with the Reuter 8¢ Champion-of-Liberty issue (Sct. 1137), short scribed lines appear at the top and bottom of the plate and are guides used in the bending of the plates, as well as in positioning them on the press. These lines became necessary because the plate layout itself was shifted closer to the bend of the plate on its "bite" side.

As a result of this shift (and since the paper was the same size, etc.), it became possible for the ink which accumulated around the corner of the bend (out of the plate wipers reach) to deposit a line on the paper in the area that fell inside the trimming line; with the result that we are provided with a nice freak item to add to our collections of inking varieties.

One problem that arises, occurs when only one ink line appears. Is it a guide line or ink accumulation line?

This problem is easily solved by noting whether the line is on "shiny" surfaced paper, or "dull" surfaced paper. If the ink line is on the "shiny" paper surface, then it is a guide line, and thusly a plate variety. If the ink line is on the "dull" paper surface, then it is extra ink deposited by all accumulation around the corner of the bend, and is thusly a Freak.

(Ref: "The Giori Press: Summary of 1959" by G. Brett, April, '60 Bureau Specialist, former name of BIA's U.S. Specialist.)

1137a ochre omitted
3 known from the
unique sheet
Scott # 3,000



Return to Sender

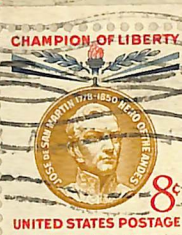


1959
NEV STA

VIA AIR MAIL

~~Mr. William N. Castor~~
~~40 U. S. Embassy Consulate General~~
~~Saigon, Vietnam Bangkok~~
~~Visitors Mail Singapore Thailand~~

PHILADELPHIA



VIA AIR MAIL

Return to Sender

~~Mr. William N. Castor~~
~~40 U. S. Embassy Consulate General~~
~~Singapore Saigon, Vietnam Bangkok Thailand~~
~~(Visitors Mail)~~

