

#1



slv



slv



slv, We cancel

320.

#2



plate 1



DSR plate 2

#3



700.-

#3



corner die break



pl 8?



a



pl 15



no pluv



b.



fine

b.
on piece



126.-

#4



pl 2



a?

150.-

a.



dull lilac

#5

#6

#7

1296.-

#8



4d. 1840?

a.



#9



#10



#11

#12

a?

#13

60-

100-

240-

#14



110.x

#15

#16



a.



orig. brown?

105.-

b.



brown red

#17

215.1

#20



118 x 35

noted: pale red
pale rose
rose-red
deep rose-red

changing?

red-brown

b.

regular

CS 3/20/56

#21

#20

	A	B	C	D	E	F	G	H	I	J	K	L
A												
B												
C												
D												
E												
F												
G												
H												
I												
J												
K												
L												
M												
N												
O												
P												
Q												
R												
S												
T												

402

GREAT BRITAIN

Watermarked Heraldic Emblems

1856



140- a 300-

1862



Watermarked Large Crown

1858-70



1250 3250 65-

Watermarked Large Garter

1862

1865



75- 9250

Watermarked Heraldic Emblems

1865



215- 100- 225-

Watermarked Spray of Rose

1867-80



625- 925- 135- 300- 350-



40- 200-

#22



#25



#26



Dublin 8/26/60

#27



false
postage

1/2

#28

#37

plate 1



a.

plate 3



a.

250-

100-

90x2

65x3

#29

plate 7



plate 8



plate 9

a.



a.



x



a.



a.



plate 12



#30

plate 13

a.



a.



plate 14

a.



a.



a.



a.



plate 15

a.



a.

40.-

72.⁵⁰-

155.-

61.-

140.-

70.-

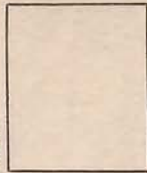
522.⁵⁰

GREAT BRITAIN.

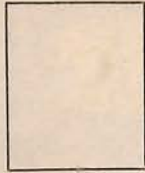
Collection of Scott #33



34
plate 98



29



30



31



35
plate 157



32
plate 86
35



plate 158



plate 171



37



38
plate 179



39
plate 104



40



41
plate 186



42



185

43
united pair unattached
06 / plate (217)



pl. 71



(71)



(72)



(73)



(74)



(76)



(77)



(78)

1867



(79)



(80)



(81)



(82)

GREAT BRITAIN.



(83)



(84)



(85)



(86)



(87)



(88)



(89)



(90)

+54⁰⁰



(91)

+54⁰⁰



(92)



(93)



(94)

+20⁰⁰ ag



(95)



(96)

+54⁰⁰



(97)

+53⁰⁰



(98)

+66⁰⁰



(99)



(100)



(101)



(102)



(103)



(104)

1869



(105)

Glasgow, Scotland
came Nation



(106)



(107)

+68⁰⁰



(108)



(109)



(110)



(111)



(112)



(113)



(114)



(115)



(116)



(117)

London
Feb 1871



(118)



(119)

+54⁰⁰



(120)

+54⁰⁰

GREAT BRITAIN.



(121)



(122)

*special cancel
overseas?*



(123)

*Copacabana
Chile*



(124)



(125)



(127)



(129)



(130)



(131)



(132)



(133)



(134)



(135)



(136)



(137)



(138)



(139)



(140)



(141)



(142)



(143)



(144)



(145)



(146)

Scottish cancel



(147)



(148)



(149)



(150)



(151)



(152)



(153)



(154)



(155)



(156)



(157)



(158)



(159)



(160)

GREAT BRITAIN.



(161)



(162)



(163)



(164)



(165)



(166)



(167)



(168)



(169)



(170)



(171)



(172)



(173)



(174)



(175)



(176)

+44²⁰



(177)



(178)



(179)



(180)



(181)



(182)



(183)



(184)



(185)



(186)



(187)



(188)



(189)



(190)



(191)



(192)

+80

+38



(193)



(194)



(195)



(196)



(197)



(198)

+44²⁰

+38²⁰

GREAT BRITAIN.



(199) (200) 1878 (201) (202) (203) 1766



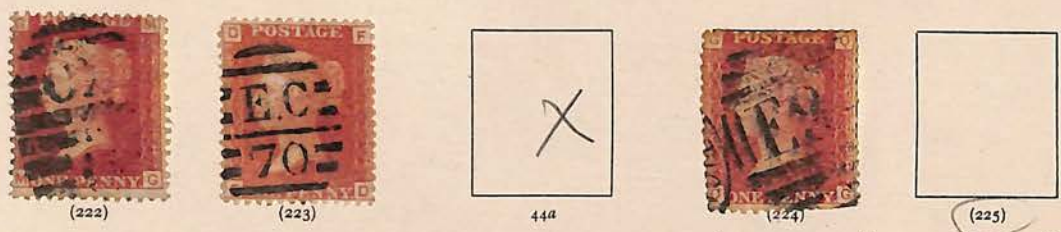
(204) 169 (205) (206) (207) (208) Scottish cancel (209)



(210) (211) (212) (213) (214) (215) Dec 29, 1879



(216) (217) (218) (219) (220) (221)



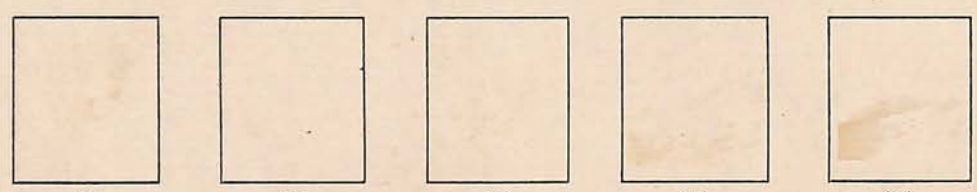
(222) (223) 444 (224) (225)

used complete to 204: 1312⁵⁰

premium for unused:
unused pair: 860. $\frac{5}{8}$
185.



(7) 45 46 47 (8)



(9) (12) (13) (14) (15)

Small uncolored corner letters

3d #37

4d #34

6d #39

9d #40

1/ #42

a. hair lines

b. hair lines

a. deep green



ISSUES OF 1862 COMPLETE

65.

105.

170.

large uncolored corner letters

3d. #44
plate 4

4d #43 a



plate 7x



plate 7
100-



plate 8
72⁵⁰



plate 8 a
90-



plate 9



plate 10
long margin 150-



plate 11 72⁵⁰

plate 11



plate 12



plate 13

plate 14
92⁵⁰

1/

6d #45



plate 5

9d #46

plate 6 190-

plate 4

plate 5

10d #47

1/ #48

plate 4

long edge

ISSUES OF 1865 COMPLETE

large uncolored corner letters
watermark spray of rose

3d #49



62⁰⁰



6%



62⁰⁰

plate 4

plate 5

plate 6

plate, unknown



67⁰⁰



7%



plate 8 62⁰⁰



plate 9 62⁰⁰

plate 10

6d #50
*50

plate 6 a

*51

plate 8

plate 9



(a)

plate 10

135-



x/x

x/x

9d #52

10 d #53



plate 1a.
350-

plate 11

plate 2

1/ #54 a.

plate 4

plate 5

plate 6



6 40-

plate 7

2/ #55

file marks

2/ #56

5/ #57

single
mult
(over)

plate 1

plate 2

ISSUES OF 1867-80

GREAT BRITAIN

Watermarked Maltese Cross
1867



pl. 2
1200-

Watermarked Spray of Rose
1872-80



55-

250-

50-

70-

120-

700-

Watermarked Anchor
1875



90-

Watermarked Orb
1876-80



pl. 10

75-

65-

Watermarked
"Half Penny" in Script
1870



pl. 8

22-

Watermarked Large Garter
1876-80

unused n.g.



overseas cancel
500-+

500-

500-

350-

Watermarked Maltese Cross
1878



3250-

4500-

12297-

1/2 d.
#58



BT ~

CT

BU

BV

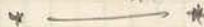


plate 1?



plate 3



plate 4
37⁵⁰



plate 6 22



plate 8
210



plate 9
850



plate 10 22



plate 5
pair 45



plate 11 22



plate 12
22



plate 13
pair 44



plate 14
22



plate 15



plate 19
60



plate 20
80



1/1



plate 5



plate 6 22



plate 11
uncancelled - perfect w/m
pair



plate 12



plate 13



plate 11 (4)



plate 20

\$
+ 22 x 15 = 330

~ 1870 ~

6d #59
brown
pl. 11



100-

b. pale buff



110-

a dup. in
'Museum of Exchange'
issues of 1872-73

pl 12

#60
gray
pl. 12

3d #61



50-

plate 11

plate 12

plate 14

plate 15

plate 16



1/2 dup. pl 12



50-

plate 17

plate 18

plate 19



110-

plate 20

dup. plates:



50-

plate 11

plate 18



unidentified



pl 16 1/2

6d #62
gray



pl 14



unused p 15 nig.
#40-

pl 15 70-

pl 15



pl 16

#63
buff
pl 13
70-

1/ #64
green
pl 8-14



120-

plate 12

plate 13

#65
salmon
1880



plate 13



ISSUES OF 1873
wmt. spray of rose

London 4/10/81

2 1/2 d #66
1875
with anchor



plate 1

135



plate 3



plate 1

#67

140

60



plate 5

#67
1876
with orb
pls 3-17



75 pl 10



pl 10



pl 11 60



pl 13 60



unidentified
1/2



pl 14 60

#68
1880
with orb



pl 17 65



pl 18
45



pl 19 65



pl 20 65



pl 19? 65

4d #69
pl 15-16
vermillion
1876



british overgas conc.
plate 15
Alexander, Ensign or Samuel?

#70
pl 15-17
pale olive
1877

pl. 15



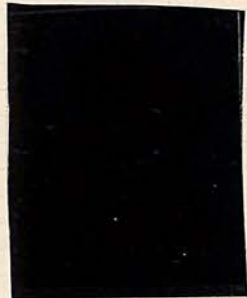
unmarked

#71
pl 17
gray brown
1880

8d #73
pl 1
org
1876

pl 1

#75
pl 1
brown lilac
wade, malt cross
1878



GREAT BRITAIN

Watermarked Imperial Crown
1880-81



13^d 12^d 50^d 100^d 32^d 90^d 440^d *mlh*

1880-81

1881



12^s 72^s 16^s

Watermarked Anchor
1882-83



32^s 2^s

Watermarked Two Anchors
1882

<p>Bluish Paper Types of 1867-78 5 S ROSE Scott No. 90</p>	<p>10 S SLATE Scott No. 91</p>	<p>£ 1 BROWN LILAC Scott No. 92</p>
--	--	---



Watermarked Imperial Crown
1883-84



150^d 30^d 18^d 24^s 475^d 675^d *mlh*



9^d 42^s 100^d 210^d 210^d 300^d

REGULAR ISSUE OF 1880-81

1/2d #78
green



1d #79



1 1/2d #80



2d #81

2 1/2d #82
wink crown



3d #83



4d #84



mint 06

REGULAR 1880-81 continued

5d #85

per post

6d #86

plate 17

plate 18

1/ #87

plate 13

plate 14

1d #88
14 pearls
per angle



32⁰⁰

per for 1/
Revenue Council



#89
16 pearls



1/21/00

London
1/4/97

pair
1/7/99

3d on 3d
#94
1883



6d on 6d
#95
1883



London 10/3/84

mont 06

2/6 #96
1883



165⁻



165⁻



per post

per post

REGULAR ISSUES 1883-84

9¹/₂d.
1/2d. #98



3/12/85

1 1/2d. #99



42st

unused

2d. #100

2 1/2d #101
18x8



4/9/85

3d #102

4d #103



5d #104

6d #105

9d #106



1¹/₂ #107



1/25/86

London 9/8/87



300-

5/ #108



10¹/₂ #109

1¹/₂ #110

250-

Boosterham 3/6/89

Livingood Crk. 7/26/92

GREAT BRITAIN

1883-84

Watermarked Anchor



165 - Watermarked Three Imperial Crowns

550 -



3000 -

Watermarked Imperial Crown

1887-92



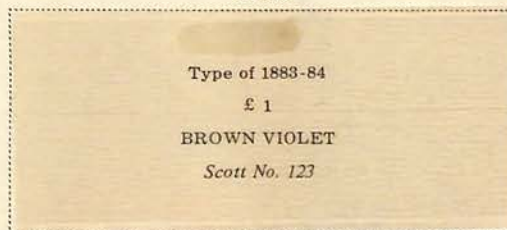
Watermarked Three Orbs

1888

Watermarked Three Imperial Crowns

1891

274 -



Type of 1883-84
£ 1
BROWN VIOLET
Scott No. 123



800 -

Watermarked Imperial Crown

1900



225 -

145 -

5187 -

QUEEN VICTORIA JUBILEE ISSUE 1887 -

2d #111
vermillion



1/2d #125
blue-green
1900



1/2d #112



2d #113



2 1/2d #114



3d #115



4d #116



7/25/89
"white 4" 2 corners

Continued *



AN OFFICIAL SUPPLY ALBUM PAGE

QUEEN VICTORIA JUBILEE 1887 - continued

4d #117
1892



mint

Flow
11-



registered

5d #118
type II



registered



a.



type I

125-

6d #119



pin perf 1/2



9d #120



MR 16 00
date purp blue

10d #121
1890



pin perf 1/2



1 ps with No 23 '01



Leicester

11d #122



mint
grey gm

275-



registered
glasgow



11d #126
1900



pair
#126

#123 / brown violet
#124 / green

GREAT BRITAIN

Watermarked Imperial Crown

1902



19

35

67

Watermarked Anchor

70

85

40



150

Watermarked Three Imperial Crowns

525



825

Watermarked Imperial Crown

192 sm. closed tear

1904-10



2

1911

16
8.15.14

22



50

17

17

17

17

GREAT BRITAIN

Watermarked Imperial Crown

1911

1912



16.75

Watermarked Crown and G V R

1912



83.25

Watermarked Crown and G V R Multiple



scar - vertical?

but scarlet

SG 361?

27. -

Watermarked Crown and G V R

1912-13



SG 360

type I



b. size of



127.45



161 b.



m. 162a type II



a.



167a



167b part 14

17.50

5.75

11.50

115

398.26

GREAT BRITAIN

Watermarked Large Crown and G V R
1913-18



10 S
LIGHT BLUE
Scott No. 175

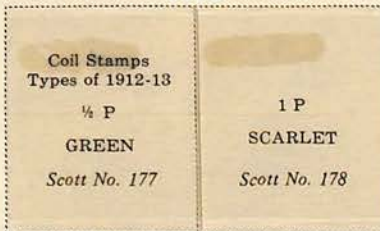
180

377



£ 1
GREEN
Scott No. 176

Watermarked Crown and G V R Multiple
1913



Coil Stamps
Types of 1912-13
1/4 P
GREEN
Scott No. 177

1 P
SCARLET
Scott No. 178

Watermarked Large Crown and G V R
1919



75

Watermarked Crown and G V R
1922

125

160



35

Watermarked Crown and Block G V R Multiple

1924

1925



29

62

GREAT BRITAIN

Watermarked Crown and Block G V R Multiple
1924 *m h*



147⁹³

4" *a. wmk sideways*

1929



14"

4" *b. wmk sideways*

Watermarked Large Crown and G V R *u*



800"



all m - sideways wmk

3.00
15.-
2.-
6.70-

Watermarked Crown and Block G V R Multiple
1934-36



21¹⁵

1086²⁵