



★ UNITED STATES ★  
★ POSTAGE ★

SERIES OF 1902-03



*Benjamin Franklin*



*George Washington*



*Andrew Jackson*



*Ulysses S. Grant*



*Abraham Lincoln*



*James A. Garfield*



*Martha Washington*



*Daniel Webster*



*Benjamin Harrison*



*Henry Clay*



*Thomas Jefferson*

See Clark  
145  
MAC  
99.50



*David G. Farragut*



*James Madison*



*John Marshall*



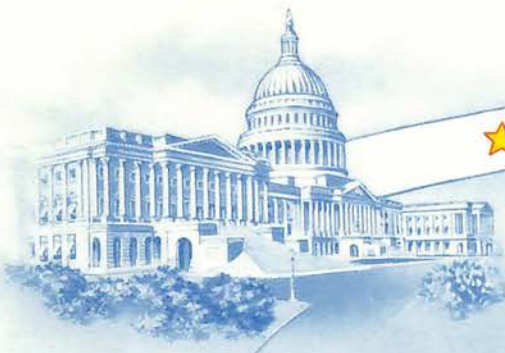
*George Washington*

This series of postage stamps, known as the 1902 series, was issued to replace the series of 1894. After the new 2c stamp was issued it was decided that a more artistic design could be made, and the Bureau of Engraving and Printing was requested to prepare one. This improved design was first issued to post offices on November 12, 1903. To add historic and educational interest to the series, the name of the person whose portrait is presented appears on each stamp, and the years of birth and death.

MADE IN U.S.A.

5-220

Whitely's



★ UNITED STATES ★  
★ POSTAGE ★

SERIES OF 1902

Imperf.  
1906

1906

1908



*Benjamin Franklin*



*George Washington*



*Abraham Lincoln*

SERIES OF 1908-09

Perf. 12 – Watermarked in DOUBLE-LINED Capitals – USPS



*Benjamin Franklin*



*George Washington*



*George Washington*



*George Washington*



*George Washington*



*George Washington*



*George Washington*

For the sake of uniformity and artistic effect, the head of Washington (a profile from Houdon's bust) was adopted as the subject of all the denominations except the one cent, which bears the head of Franklin (the first Postmaster General).



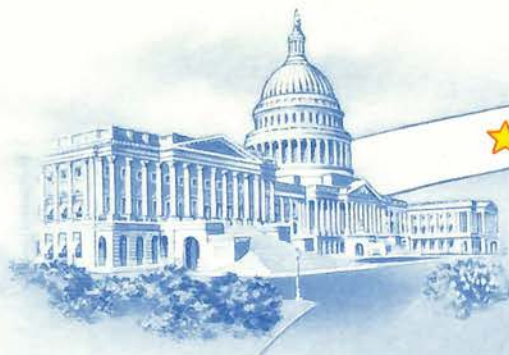
*George Washington*



MADE IN U.S.A.

9-220

*W. H. R.*



★ UNITED STATES ★  
★ POSTAGE ★



*Benjamin Franklin*

SERIES OF  
1908-09  
DOUBLE LINE  
Watermark



*George Washington*



*George Washington*



*Franklin*



*Washington*

1908-10  
COIL  
STAMPS  
Perf. 12



*Washington*



*Washington*

SPECIAL DELIVERY



*Messenger Boy on Bicycle*



*Winged Hat of Mercury*



*Messenger Boy on Bicycle*

SINGLE LINE  
Watermark

MADE IN U.S.A.

9-220

*Wells Fargo*



★ UNITED STATES ★  
★ POSTAGE ★

SERIES OF 1909

Perf. 12 Vertical



*Benjamin Franklin*



*George Washington*



*George Washington*



356 546

Bluish Paper



*Benjamin Franklin*



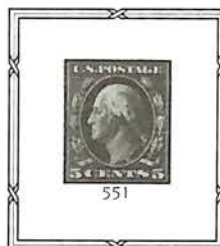
*George Washington*



*George Washington*



*George Washington*



*George Washington*



552



553



554

*George Washington*

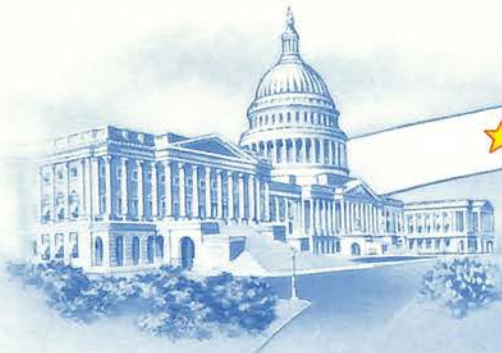


555



356 556

Bluish Paper, used in production of this group of ten stamps, was made of thirty-five percent rag stock instead of all wood pulp. The bluish paper can be detected on the face of the stamps as well as on the backs. The Issue was a very limited one.



★ UNITED STATES ★  
★ POSTAGE ★

SERIES OF 1910-11

Watermarked in SINGLE LINE Capitals — USPS

Perf. 12

During the year 1910, about November 1st, the Bureau of Engraving and Printing began using paper watermarked with single-lined letters — USPS.



*Benjamin Franklin*



*George Washington*



*George Washington*



*George Washington*



*George Washington*



IMPERFORATE



*Benjamin Franklin*



*George Washington*

Perf. 12 Vertically



*Benjamin Franklin*



*George Washington*



*George Washington*

MADE IN U.S.A.

9-2-20

*Walters*



★ UNITED STATES ★  
★ POSTAGE ★

Perf. 12 Horizontally

SERIES OF  
1910

Perf. 8½ Horizontally



*Benjamin Franklin*



*George Washington*

Watermarked  
SINGLE LINE



*Benjamin Franklin*



*George Washington*

SERIES OF 1910-13

Perf. 8½ Vertically



*Benjamin Franklin*



*George Washington*



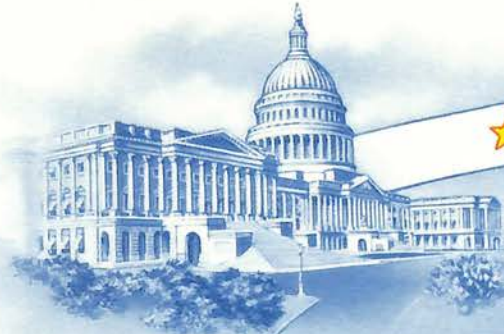
*George Washington*



MADE IN U.S.A.

8-2210

*Whitely*



★ UNITED STATES ★  
★ POSTAGE ★

PARCEL POST ISSUES

1912-13



*Clerk*



*City Carrier*



*Railway Postal Clerk*



*Rural Carrier*



*Mail Train*



*Steamship and Mail Tender*



*Automobile Service*



*Aeroplane Carrying Mail*



*Manufacturing*



*Dairying*



*Harvesting*



*Fruit Growing*

Under the provisions of the act of Congress approved August 24, 1912, the Department prepared a set of twelve parcel post stamps and five parcel post-postage due stamps of distinctive designs. The designs were prepared in 3 groups of 4 stamps each, the working personnel of the Postal Service being represented by the first group, the transportation of the mail by the second group, and the manufacturing and agricultural interests of the country by the third group. The stamps were first placed on sale January 1, 1913 with the inauguration of the parcel post law.

MADE IN U.S.A.

5-220

Whitely



★ UNITED STATES ★  
★ POSTAGE ★

ISSUES OF 1912-14

Watermarked in SINGLE LINE - Perf. 12



*George Washington*

The discontinuance of distinctive parcel post stamps made it necessary to issue five new denominations of ordinary stamps to take their place. In this group, the seven cent stamp bears the head of Washington in profile, from Houdon's bust, looking to the left.

IMPERFORATE



*George Washington*



*George Washington*

Perf. 8½



*George Washington*



*George Washington*



*George Washington*



*George Washington*





★ UNITED STATES ★  
★ POSTAGE ★

ISSUES OF 1912-14

Watermarked in SINGLE LINE - Perf. 12



*Benjamin Franklin*

This new group of stamps, released in January and February 1912, featured more distinguishing colors for the benefit of postal workers sorting the mails. There was too much similarity in the various denominations in the previous series.



*Benjamin Franklin*



*Benjamin Franklin*

*Benjamin Franklin*

Watermarked in DOUBLE-LINE Capitals - USPS

1912



*Benjamin Franklin*

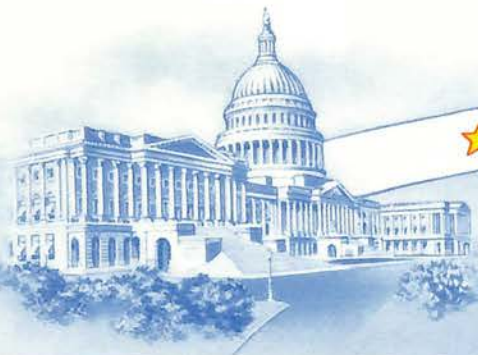


*Benjamin Franklin*

MADE IN U.S.A.

W. 110

Walters



★ UNITED STATES ★  
★ POSTAGE ★

POSTAGE DUE STAMPS

1910-12

Watermarked in SINGLE LINE



*Numeral of Value*



*Numeral of Value*



*Numeral of Value*



*Numeral of Value*

PARCEL POST DUES

1912



*Numeral of Value*



*Numeral of Value*



*Numeral of Value*



MADE IN U.S.A.

B-220

Wells



★ UNITED STATES ★  
★ POSTAGE ★

ISSUES OF 1914-15

Watermarked in SINGLE LINE Capitals — USPS — Perf. 10



George Washington

George Washington



George Washington

George Washington

George Washington

Benjamin Franklin

Benjamin Franklin



Benjamin Franklin



Benjamin Franklin

REGISTRATION  
1911



American Eagle

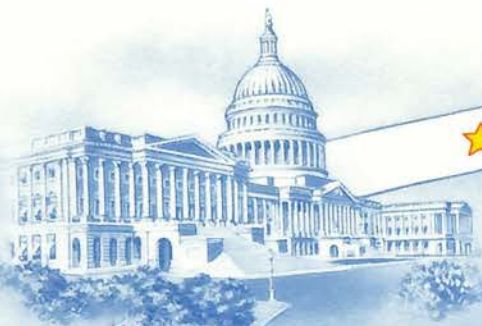


Benjamin Franklin

MADE IN U.S.A.

9-270

W. H. & A. S.



★ UNITED STATES ★  
★ POSTAGE ★

ISSUES OF 1914

SINGLE-LINE WATERMARK USPS — PERF. 10



*George Washington*



*George Washington*



*George Washington*



SPECIAL DELIVERY STAMPS

1916

1914



SINGLE-LINE WATERMARK — PERF. 10



*Messenger on Bicycle*

UNWATERMARKED — PERF. 10

1917

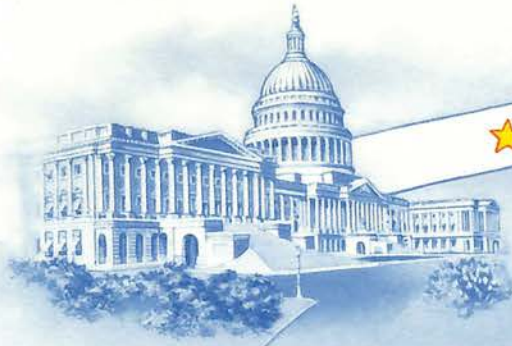


UNWATERMARKED — PERF. 11

MADE IN U.S.A.

S 220





★ UNITED STATES ★  
★ POSTAGE ★

COIL STAMPS

1914-16  
Rotary Press Printing — Perf. 10



*George Washington*

Between the years 1910 and 1920, there were many plate varieties issued on the 2c and 3c stamps with the head of George Washington. For a description of these varieties consult a good specialized catalog of United States stamps. Spaces for the more important variations are provided in this album.



MADE IN U.S.A.

B 270

*Whitely*



★ UNITED STATES ★  
★ POSTAGE ★

DOUBLE-LINE WATERMARK  
PERF. 10  
1915



*Benjamin Franklin*

SINGLE-LINE WATERMARK  
IMPERFORATE  
1914



*George Washington*

SINGLE-LINE WATERMARK  
PERF. 11  
1915



*George Washington*

UNWATERMARKED PAPER — Perf. 10  
1917



*James Madison*



*John Marshall*

1916-17  
UNWATERMARKED — IMPERFORATE



*Washington*



*Washington*



*Washington*



*Washington*

MADE IN U.S.A.

5 220

*Whitely*



★ UNITED STATES ★  
★ POSTAGE ★

SERIES OF 1917-19

Rotary Press Coil Stamps — Perf. 10



Washington

Washington



Washington

Washington



Washington



Washington

MADE IN U.S.A.

9-220

Whitely's



★ UNITED STATES ★  
★ POSTAGE ★

SERIES OF 1916-17

FLAT PLATE PRINTINGS — PERF. 10

Unwatermarked



George Washington



la Clark  
995

MAE

George Washington

George Washington



Benjamin Franklin

Benjamin Franklin



Benjamin Franklin

MADE IN U.S.A.

S 220

Walters





★ UNITED STATES

★ POSTAGE ★

SERIES OF 1917-19

FLAT PLATE PRINTINGS — PERF. 11

Unwatermarked



*George Washington*



*George Washington*

*George Washington*

*George Washington*

*George Washington*

*Benjamin Franklin*



*Benjamin Franklin*

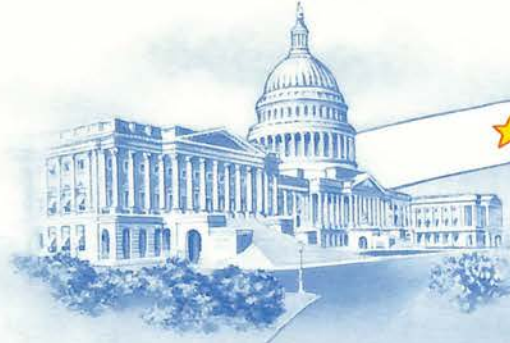


*Benjamin Franklin*

MADE IN U.S.A.

S 270

*Wells*



★ UNITED STATES ★  
★ POSTAGE ★

POSTAGE DUES

SINGLE-LINE WATERMARK USPS — PERF. 10

1914-15



Numeral



Numeral

723

724

Numeral



1916  
UNWATERMARKED  
PERF. 10



Numeral

Numeral

1917-23  
PERF. 11



Numeral

MADE IN U.S.A.

S 220

Whitely's



★ UNITED STATES ★  
★ POSTAGE ★

ISSUES OF 1919

OFFICES IN CHINA

Postage stamps of the current series were issued to the United States postal agency, Shanghai, China, surcharged "Shanghai, China." They were surcharged at double the original value of the stamps. The stamps were issued May 24, 1919, and were placed on sale at Shanghai, July 1, 1919.



Washington



Washington



Washington



Washington



Franklin



Franklin



Franklin



Franklin



Franklin



Washington



Washington

1922

1922



★ UNITED STATES ★  
★ POSTAGE ★

DOUBLE-LINE WATERMARK — PERF. 11

1917



*George Washington*

UNWATERMARKED — PERF. 11

1918



*Benjamin Franklin*



*Benjamin Franklin*

OFFSET PRINTINGS OF 1918-20

Unwatermarked — Perf. 11



*Washington*

*Washington*



*Washington*

*Washington*

1919

Perf. 12½



*Washington*

MADE IN U.S.A.

8-2720





★ UNITED STATES ★  
★ POSTAGE ★

OFFSET PRINTINGS OF 1918-20  
IMPERFORATE



*George Washington*



*George Washington*



*George Washington*

ISSUES OF 1919

Unwatermarked — Rotary Press Printing — Perf. 11 x 10



*George Washington*



*George Washington*



MADE IN U.S.A.

9 220

*Whitely*



★ UNITED STATES ★  
★ POSTAGE ★

Perf. 10 x 11  
Unwatermarked — Rotary Press  
1920



Washington

Perf. 10  
Unwatermarked — Rotary Press  
1921



Washington

Rotary Press Printing — Perf. 11  
1921



Washington



1920



Franklin

Flat Plate Printing  
Perf. 11

SPECIAL DELIVERY STAMPS

1922



Motorcycle Delivery

1925



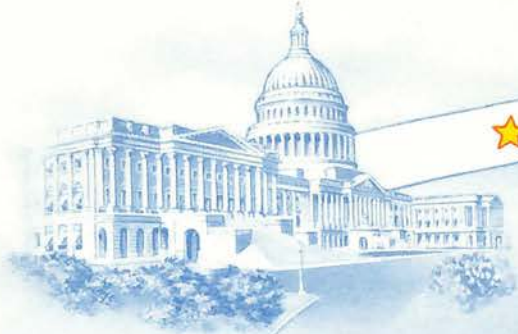
Motorcycle Delivery

1925



Post Office Truck

Flat Plate Printings — Perf. 11



★ UNITED STATES ★  
★ POSTAGE ★

REGULAR ISSUE OF 1922-25

Flat Plate Printing — Perf. 11



*Nathan Hale*



*Benjamin Franklin*



*Warren G. Harding*



*George Washington*



*Abraham Lincoln*



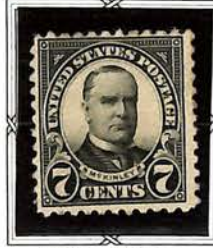
*Martha Washington*



*Theodore Roosevelt*



*James A. Garfield*



*William McKinley*



*Ulysses S. Grant*



*Thomas Jefferson*



*James Monroe*



*Rutherford B. Hayes*



*Grover Cleveland*



*American Indian*



*Golden Gate*



*Niagara Falls*



*Statue of Liberty*



*American Buffalo*



*Arlington Amphitheater*



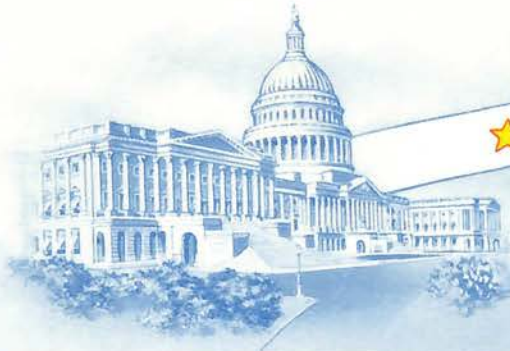
*Lincoln Memorial*



*U. S. Capitol*



*"America"*



★ UNITED STATES ★  
★ POSTAGE ★

Flat Plate Printing — Imperf.

1923-25



*Benjamin Franklin*



*Warren G. Harding*



*George Washington*



*Franklin*

Rotary Press  
— Perf. 11 x 10 —  
1923-26



*Washington*

Perf. 10



*Benjamin Franklin*



*Warren G. Harding*



*George Washington*



*Abraham Lincoln*



*Martha Washington*



*Theodore Roosevelt*



*James A. Garfield*



*William McKinley*



*Ulysses S. Grant*



*Thomas Jefferson*



*James Monroe*





★ UNITED STATES ★  
★ POSTAGE ★

MADE IN U.S.A.

S 220



*These were issued in sheets of 70 or 100 from coil waste paper. The stamp designs measure approximately 19 3/4 MM wide by 22 1/4 MM high*

Rotary Press Printing — Perf. 11



*Benjamin Franklin*

1923



*George Washington*

### COIL STAMPS

1923-25



*Warren G. Harding*



*Benjamin Franklin*



*George Washington*



★ UNITED STATES ★  
★ POSTAGE ★

COIL STAMPS

1923-29



*Benjamin Franklin*



*Warren G. Harding*



*George Washington*



*George Washington*



*Abraham Lincoln*



*Martha Washington*



*Theodore Roosevelt*

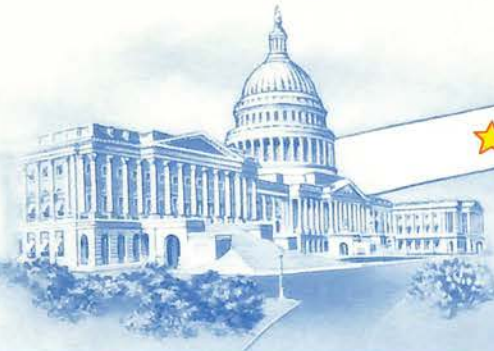


*James Monroe*

MADE IN U.S.A.

8-220





★ UNITED STATES ★ POSTAGE ★

1925-26

Flat Plate Printing — Perf. 11



*Benjamin Harrison*



*Woodrow Wilson*

Rotary Press Printing — Imperf.

1926



*Warren G. Harding*

SPECIAL HANDLING

1925-29



*Denomination over Pattern Background*



*Denomination over Pattern Background*



MADE IN U.S.A.

9 220





★ UNITED STATES ★  
★ POSTAGE ★

POSTAGE DUES

1925



*Numeral*

Unwatermarked — Perf. 11

1930-31



*Numeral*



*Numeral*



1927



*Motorcycle Delivery*

SPECIAL DELIVERY

Unwatermarked  
Rotary Press  
Perf. 11 x 10½

1931

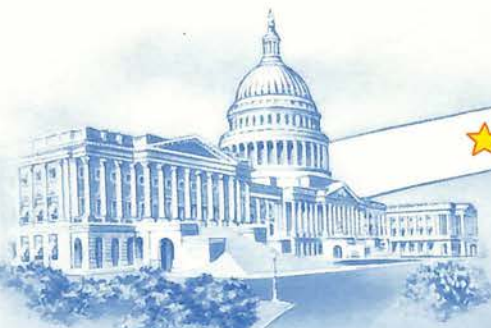


*Motorcycle Delivery*

MADE IN U.S.A.

9-220

*Whitely*



★ UNITED STATES ★  
★ POSTAGE ★

Rotary Press Printing — Perf. 11 x 10½

1926-34



*Benjamin Franklin*



*Warren G. Harding*



*George Washington*



*George Washington*



*Abraham Lincoln*



*Martha Washington*



*Theodore Roosevelt*



*James A. Garfield*



*William McKinley*



*Ulysses S. Grant*



*Thomas Jefferson*



*James Monroe*

1929



*Nathan Hale*

MADE IN U.S.A.

5-220





★ UNITED STATES ★  
★ POSTAGE ★

KANSAS OVERPRINTS

1929

REGULAR ISSUES OF 1926-27  
OVERPRINTED "KANS."



*Benjamin Franklin*



*Warren G. Harding*



*George Washington*



*Abraham Lincoln*



*Martha Washington*



*Theodore Roosevelt*



*James A. Garfield*



*William McKinley*



*Ulysses S. Grant*



*Thomas Jefferson*



*James Monroe*

MADE IN U.S.A.

9-220

Whitely's



★ UNITED STATES ★  
★ POSTAGE ★

NEBRASKA OVERPRINTS

1929

REGULAR ISSUES OF 1926-27  
OVERPRINTED "NEBR."



*Benjamin Franklin*



*Warren G. Harding*



*George Washington*



*Abraham Lincoln*



*Martha Washington*



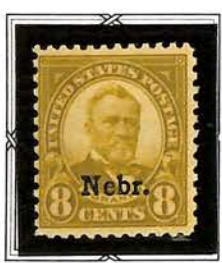
*Theodore Roosevelt*



*James A. Garfield*



*William McKinley*



*Ulysses S. Grant*



*Thomas Jefferson*



*James Monroe*

MADE IN U.S.A.

B 220

*Whitely*