



ALL COMMEMORATIVES CURRENTLY AVAILABLE,  
GENEVA, SWITZERLAND

33 book of stamps  
3 at  
British Post Office Mint Stamps



marks

50p  
1988



London  
1980

INTERNATIONAL STAMP  
6-14 MAY 1980

From The British Post Office Philatelic Bureau,  
Lothian House,  
124 Lothian Road,  
EDINBURGH EH3 9BB

THIS ENVELOPE  
CONTAINS  
MINT STAMPS

PHIL. 134

Stamps For Collectors

802

Cons 14508

SN

C

Please do not remove stamps from folders.



ABB

21-

### STAMP CENTER



PLEASE TURN PAGES CAREFULLY

COUNTRY GREENLAND

UNUSED  OG  USED \_\_\_\_\_ BLOCK \_\_\_\_\_ PL BLK \_\_\_\_\_

CPL SET \_\_\_\_\_ SHORT SET \_\_\_\_\_ V.F.  FINE \_\_\_\_\_ AVE. \_\_\_\_\_

CAT. NO. 8-16 NOTES NH (2 WITH SLIGHT C) ALL BRIGHT/FRESH APPEARANCE

CAT. VAL. 337.50 SELLING PRICE 130

493

103 (

C

796

DO NOT

Country \_\_\_\_\_

Mint

Cpl Set  Sup \_\_\_\_\_ VF  F-VF \_\_\_\_\_ F \_\_\_\_\_ Avg \_\_\_\_\_

Block \_\_\_\_\_ Pl. Blk. \_\_\_\_\_ Cat. Value \$ 60.35

Notes Cpl/set (8)

PHOTO \_\_\_\_\_ LOT # 293

15K

ICELAND  
# 289-96 VFNH  
cpl/set  
53.60



TROPICAL STAMPS, INC.  
P. O. Box 5646

Christian X  
1912-1937



Verð - Prix - kr. 2.00.

Block      Pl. Blk.      Cat. Value \$ 85  
Notes Mint Soud Sheet corner

PHOTO      LO     

TROPICAL  
P. O.  
Ft. Lauderdale

DO NOT REMOVE



PLEASE TURN

Country Iceland  
Mint  OG  NH       
Cpl Set  Sup      VF       
Block      Pl. Blk.      C       
Notes Cpl set

LOT NO. 501 NO. 56-4 BID 2  
COUNTRY Iceland  
CAT. NO. 03 CAT. VALUE       
UNUSED  OG  NH       
SUPERB      VF      FINE  G       
OTHER       
REMARKS     



DELAWARE STAMP & COIN CO., INC.  
Hance Jaquett, Auctioneer  
810 Orange Street, Wilmington, Delaware 19801  
Telephone (302) 655-4797



LOT NO. 497 NO. 56-2 BID 1.50 BIDDER 17  
COUNTRY ICELAND  
CAT. NO. 302-04 CAT. VALUE 8.50  
UNUSED  OG  NH VLH USED       
SUPERB      VF  FINE  VG      G       
OTHER       
REMARKS     



DELAWARE STAMP & COIN CO., INC.  
Hance Jaquett, Auctioneer  
810 Orange Street, Wilmington, Delaware 19801  
Telephone (302) 655-4797







Design/Conception : Oliver Hill, Dennis Page  
Photography/Photographie : Ted Coldwell

CANADIAN BANK NOTE

Issued to mark the 50th anniversary  
of Portuguese immigration to Canada

48 CANADA

Canada

48 CANADA

Canada

48 CANADA

Canada

48 CANADA

Canada

Design/Conception : Oliver Hill, Dennis Page  
Photography/Photographie : Ted Coldwell

CANADA

499-507

Canada

0 + (PL) SH XF (VF) F VG

LOT # 1904 SALE # 158

Earl P. L. Apelbaum Inc.

Brown ALE-808

3-

10.80

SG Mi YV MS FA ZM 80

Phil

OTTETOWN 19 - 1969

OTTETOWN 68 - 1969

POSTES POSTAGE

POSTES POSTAGE

BRITISH AMERICAN BANK NOTE

OTTAWA NO 1

CANADA

32

ASHTON-POTTER Design: LIMITED TORONTO  
Louis Fishauf



ASH... 32

ASHTON-POTTER Design: LIMITED TORONTO  
Louis-A



32

ASHTON-POTTER Design: LIMITED TORONTO  
Dennis Noble/Ken Rodmell



No 1: BRITISH AMERICAN Design: Sculpture:  
HEATHER COOPER JIROSLAV HUDA



AUCTION #

SALE #

131

LOT #

512

AB 5557

4-

Country

Canada

Cat. #

600(3)

Cat. Value

24 <sup>1/2</sup>

# METRO



Metro Stamp Co., Inc.

PLEASE DO NOT REMOVE STAMPS FROM Pochette

AUCTION #

SALE #

126

LOT #

838

AB-5557

12-

Country

Canada

Cat. #

415(3)

Cat. Value

54.00 +

# METRO



Metro Stamp Co., Inc.

PLEASE DO NOT REMOVE STAMPS FROM Pochette



Canada Day 1982  
la Fête du Canada 1982  
Issued to commemorate  
Emission célébrant

ASHTON-POTTER  
Design  
LIMITED TORONTO  
Pierre Sissieroff

CANADA 30

CANADA 30

CANADA 30

CANADA 30

ASHTON-POTTER  
Design  
LIMITED TORONTO  
Jaques Delisle, Pierre Kohler

CANADA  
YELLOWKNIFE

CANADA  
YELLOWKNIFE

Canada  
32

Canada  
32

CANADA  
30

CANADA  
30

CANADA  
30

CANADA  
30

CANADA  
30

CANADA  
30

CANADA  
30

CANADA  
30

POSTAGE POSTES  
CANADA 60

POSTAGE POSTES  
CANADA 60

POSTAGE POSTES  
CANADA 60

POSTAGE POSTES  
CANADA 60

POSTAGE POSTES  
CANADA 60

POSTAGE POSTES  
CANADA 60

NOTE OTTAWA  
Design  
Eng. Wm. J. G. G. G.







721

LOT

GREG MANNING AUCTIONS, INC.

115 MAIN ROAD  
MONTVILLE, NEW JERSEY 07048  
(201) 299-1800



Handwritten notes: 1/27/99

MS  
F-UF1

CAT. NO.

CAT. VAL.



GMA



40-077-028-(6-76)

1 5 9 7 6 4 3 2 1

# MAIL POSTE

Canada Post Corporation/Société canadienne des postes

CANADIAN BANK NOTE  
CANADIENNE BANQUE NOTE

**N'oubliez pas...**  
Le code postal fait partie  
de toute adresse!

**Re letter perfect**





Canada 32  
Discovery of St. Lawrence Valley / Les découvertes à St. Lawrence 1535

Canada 32  
Discovery of St. Lawrence Valley / Les découvertes à St. Lawrence 1535

CANADA 32  
NEWFOUNDLAND - TERENURE  
1583 - SIR HUMPHREY GILBERT

CANADA 32  
NEWFOUNDLAND - TERENURE  
1583 - SIR HUMPHREY GILBERT

Canada 32  
Scouting  
La scoutisme  
1908-1983

Canada 32  
Scouting  
La scoutisme  
1908-1983

CANADA 32  
UNIVERSIADE '83  
POSTAGE/POSTES

CANADA 32  
UNIVERSIADE '83  
POSTAGE/POSTES

CANADA 32  
UNIVERSIADE '83  
POSTAGE/POSTES

CANADA 32  
UNIVERSIADE '83  
POSTAGE/POSTES

CANADA 34  
DINMIC WINTER GAMES SITE  
SITE DES JEUX D'HIVER D'ALBERTA

CANADA 34  
DINMIC WINTER GAMES SITE  
SITE DES JEUX D'HIVER D'ALBERTA

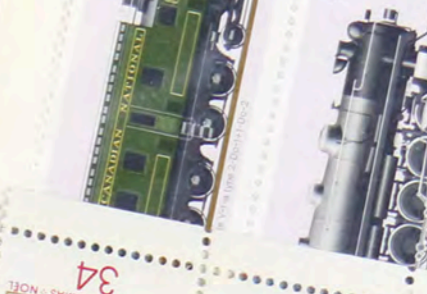
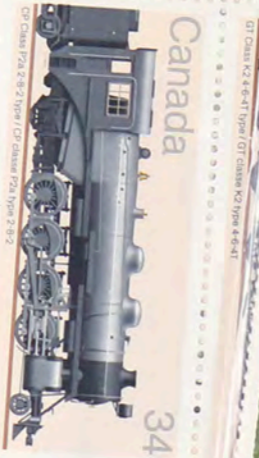
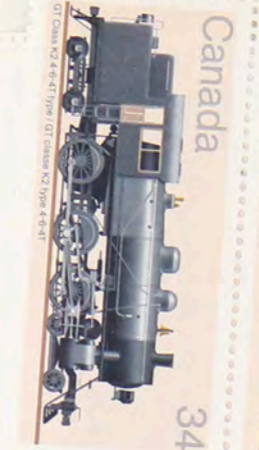
CANADA 34  
Musée des beaux-arts de Montréal  
The Montreal Museum of Fine Arts  
1860-1985

CANADA 34  
Musée des beaux-arts de Montréal  
The Montreal Museum of Fine Arts  
1860-1985

CANADA 34  
Musée des beaux-arts de Montréal  
The Montreal Museum of Fine Arts  
1860-1985

CANADA 34  
Musée des beaux-arts de Montréal  
The Montreal Museum of Fine Arts  
1860-1985







Canada 17  
Canada 17  
Canada 17

Canada 17  
Canada 17  
Canada 17

Canada 17  
Canada 17  
Canada 17

Canada 17  
Canada 17  
Canada 17

Canada 17  
Canada 17  
Canada 17

INTERNATIONAL EXPOSITION  
PHILATÉLIQUE INTERNATIONALE  
TORONTO 1987, CA 15 25



Canada 34  
Canada 34  
Canada 34

Canada 17  
Canada 17  
Canada 17

Canada 17  
Canada 17  
Canada 17

Canada 17  
Canada 17  
Canada 17



## UNITED STATES

Tourist Attractions featured on US rate stamps include:

- 1) The Yukon Quest Sled Dog Race;
- 2) Alberta's Icefields Parkway;
- 3) Northern Ontario's Agawa Canyon; the historic, once-walled, "Old Montreal";
- 4) Kings Landing Historical Settlement on New Brunswick's St. John River.

Les attractions touristiques qui forment les motifs des timbres au tarif des envois à destination des États-Unis sont :

- 1) la course d'attelage de chiens Yukon Quest;
- 2) la Promenade des glaciers, en Alberta;
- 3) le canyon Agawa, dans le Nord de l'Ontario;
- 4) le Vieux-Montréal, quartier historique autrefois fortifié;
- 5) le Village historique de Kings Landing, en bordure de la rivière Saint-Jean, au Nouveau-Brunswick.

"The toughest sled dog race in the world".

La course d'attelage de chiens la plus éprouvante qui soit.



"In the Shadow of the Great Divide...the Icefields Parkway".

À l'ombre de la ligne de partage des eaux... la Promenade des glaciers.



"One of the most spectacular train excursions in North America".

L'une des excursions en train les plus spectaculaires d'Amérique du Nord.



"A window on the St. Lawrence River" with a park and promenade.

Une fenêtre sur le fleuve Saint-Laurent révélant un parc et une promenade.



"A dynamic, progressive living history museum".

Un musée historique vivant et dynamique.



Printing / Impression : Canadian Bank Note Design / Conception : Bradbury Design Inc  
Photos : Paul Austring, Keith Moulding, Michael Rafelson, Dominique Morin, Daryl Kajati

ÉTATS - UNIS

## INTERNATIONAL

Tourist Attractions featured on International rate stamps include:

- 1) The aurora borealis or northern lights;
- 2) Vancouver's Stanley Park;
- 3) Head-Smashed-In Buffalo Jump in southwest Alberta;
- 4) Quebec's Saguenay Fjord;
- 5) Peggy's Cove near Halifax, NS.

Les attractions touristiques qui forment les motifs des timbres au tarif du régime international sont :

- 1) les aurores boréales;
- 2) le parc Stanley, à Vancouver;
- 3) le précipice à bisons Head-Smashed-In, dans le Sud-Ouest de l'Alberta;
- 4) le fjord du Saguenay, au Québec;
- 5) Peggy's Cove, près d'Halifax, en Nouvelle-Écosse.

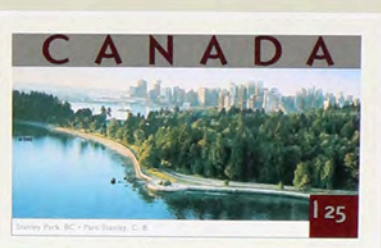
Magnificent displays of multi-coloured luminosity.

Phénomènes magnifiques d'une grande luminosité.



A 1000-acre forest park with an 8 kilometer-encircling seawall.

Parc urbain de 1000 acres entouré d'un ouvrage longitudinal de huit kilomètres.



"The world's oldest, largest and best preserved buffalo jump" - a UNESCO World Heritage site.

Le précipice à bisons le plus ancien, le plus important et le mieux préservé, site du patrimoine mondial de l'UNESCO.



A glacial gorge through the Laurentian Mountains.

Une vallée glaciaire traversant les Laurentides.



"The quintessential maritime fishing village".

Le village de pêche typique des Maritimes.



Printing / Impression : Canadian Bank Note Design / Conception : Bradbury Design Inc  
Photos : Hans Blohm, Albert Normandin, Daryl Kajati, Daniel Ouellette, Terry James

INTERNATIONAL



DESIGN / CONCEPTION : LOWE-MARTIN / MONIQUE DUFLOUR, SOPHIE LAFORTUNE  
ILLUSTRATIONS : GHISLAINE LEBEVRE  
PHOTOGRAPHY / PHOTOGRAPHIES : PETER TIMMERMANS  
MALAK, THE OTTAWA HOSPITAL / L'HÔPITAL D'OTTAWA



A# 331-33 Canada Cols VFNH  
466-68

12.00

295  
2.-

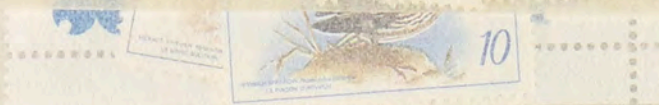


377

2.-



381



383



295  
6.-

382



295  
6.-

389



