

1933 Commemoratives



#732
Group of Workers



#733
World Map



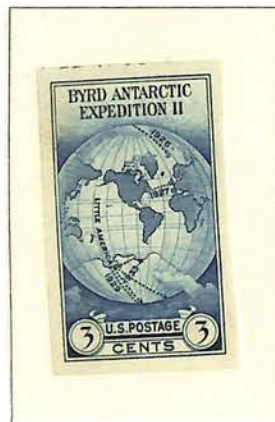
#734
Gen. T. Kosciuszko

1934 National Stamp Exhibition

Imperforate



#735
Byrd Antarctic Expedition



#735a
Byrd Antarctic Expedition

1934 Commemoratives



#736
The Ark and The Dove



#737 - ROTARY, PERF. 11x10 1/2
Whistler's Mother



#738 - FLAT PLATE, PERF. 11
Whistler's Mother



#739
Nicolet's Landing

1934 Commemoratives

National Parks Issue



#740
Yosemite



#741
Grand Canyon



#742
Mt. Rainier



#743
Mesa Verde



#744
Yellowstone

1934 Commemoratives

National Parks Issue



#745
Crater Lake



#746
Acadia



#747
Zion



#748
Glacier National Park



#749
Great Smoky Mountains

1934 American Philatelic Exhibition Imperforate

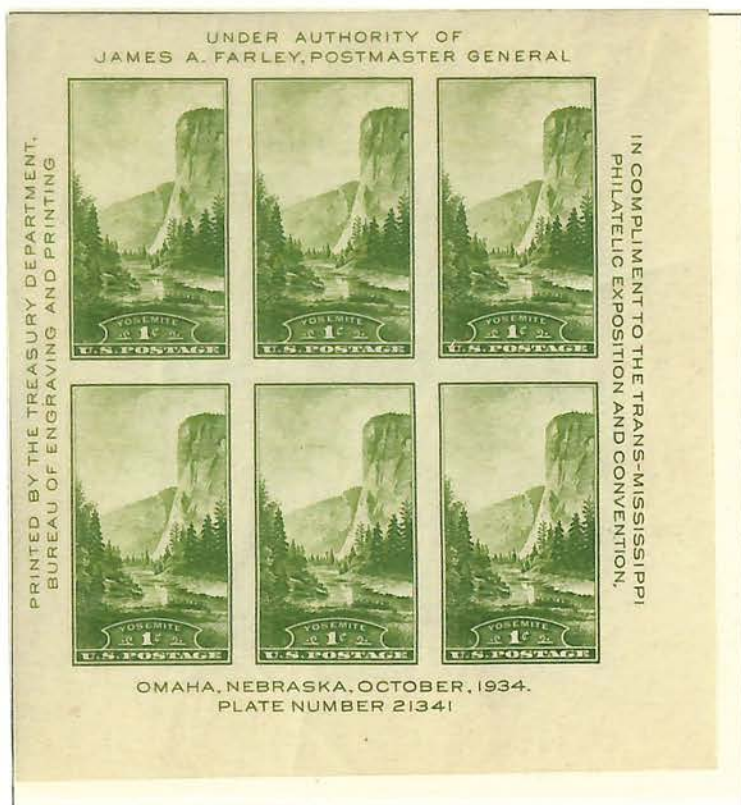


#750
Mt. Rainier



#750a
Mt. Rainier

1934 Trans-Mississippi Philatelic Exposition Imperforate



#751
Yosemite



#751a
Yosemite

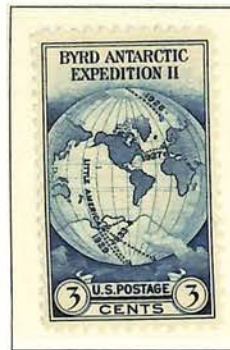
1935 Commemoratives

Special Printing of 1935

(Farley's Follies)



#752
Washington's Headquarters



#753
World Map

Imperforate



#754
Whistler's Mother



#755
Nicolet's Landing

1935 Commemoratives

Special Printing of 1935

(Farley's Follies)



#756
Yosemite



#757
Grand Canyon



#758
Mt. Rainier



#759
Mesa Verde



#760
Yellowstone

1935 Commemoratives

Special Printing of 1935

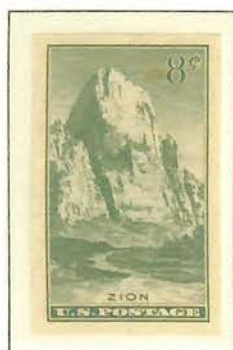
(Farley's Follies)



#761
Crater Lake



#762
Acadia



#763
Zion



#764
Glacier National Park



#765
Great Smoky Mountains

1935 Commemoratives

Special Printing of 1935

(Farley's Follies)



#766
Fort Dearborn

1935 Commemoratives

Special Printing of 1935

(Farley's Follies)



#767
Federal Building at Chicago

1935 Commemoratives

Special Printing of 1935

(Farley's Follies)



#768
Byrd Antarctic Expedition

1935 Commemoratives

Special Printing of 1935

(Farley's Follies)



#769
Yosemite

1935 Commemoratives

Special Printing of 1935

(Farley's Follies)



#770
Mt. Rainier

1935 Commemorative

Special Printing of 1935

(Farley's Follies)



#771
Great Seal of the United States

1935 Commemoratives



#772
Connecticut Tercentenary



#773
California Pacific Exposition



#774
Boulder Dam



#775
Michigan Centennial

















WEBSTER GROVES STAMP CLUB

LOT 3

15⁵⁰
JB



Scott

Country U.S. Cat. No. 160P4 Cat. Value 25.⁰⁰

Description 7c Orange Vermilion Plate proof on Card,
Huge Margins, Extremely Fine

1990 Scott retail 11.⁰⁰

WEBSTER GROVES STAMP CLUB

1050
JB

LOT 12



Country U.S. Cat. No. 323 Cat. Value 30.⁰⁰

Description 1c Louisiana Purchase, Well Centered,
Very Fine

Scott retail 18.⁰⁰



Mr Henry M. Crocker
Xenia
Ohio,

Private Mailing Card

AUTHORIZED BY ACT OF CONGRESS MAY 10, 1898

THIS SIDE FOR THE ADDRESS ONLY.



A. L. Halliwell
N. Y. Life Bldg.
City

After 5 days return to
MINNESOTA CHRISTIAN ENDEAVOR UNION
Rev. George E. Soper, President,
75 Iglehart St.,
ST. PAUL, MINNESOTA.



Miss Harriett Plummer,
1823 Fifth Avenue South,
Minneapolis, Minn.

TDA



Miss Eleanor McCaffree
#8 Webber apts
13th & Dakota
Sioux Falls, So. Dak.

POSTAL CARD.



NOTHING BUT THE ADDRESS CAN BE PLACED ON THIS SIDE.

Miss Helen Hellinell, .05

358 Twenty-seventh Seventh St^h

Milwaukee,

Wisconsin.



Mrs C. B. Cracker

Xenia

Ohio.

After 10 days, return to

A. L. Helliwell

CHELAN, WASH.

735 Palace Bldg.
Mpls. Minn.



Mrs A. L. Helliwell
740 E. 16th St.
Minneapolis
Minn.

After.....days, return to

OSAKIS, MINN.



For

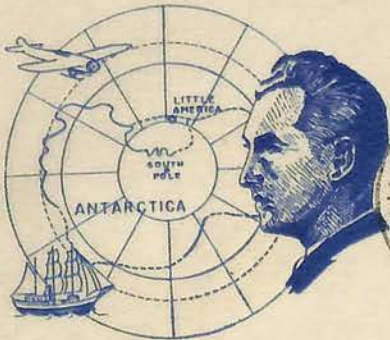
Mr. Arthur L. Helliwell

Minneapolis

1113 Sun Life Bldg

Minn.

BYRD'S SECOND ANTARCTIC EXPEDITION
LITTLE AMERICA STAMP



FIRST DAY COVER
ISSUED AT WASHINGTON D.C. OCTOBER 9, 1933

Per Byrd



WELCOME HOME

AIR MAIL



ADMIRAL BYRD

South Pole Discovered From Air
Nov. 29, 1929



Per Byrd

*Ed. Horwitz
Box 1525
Cincinnati, O.*

AIR MAIL