

Parliament Buildings, Wellington

Postage Stamps of New Zealand



Queen Elizabeth II

ELIZABETH CORONATION

1953

These stamps were issued May 25, 1953, to mark the coronation in London of Queen Elizabeth II as successor to her father, King George VI, who had died the previous year.



Westminster Abbey



Buckingham Palace & Queen



Queen & Duke of Edinburgh



Crown & Scepter



Queen Elizabeth II

ROYAL VISIT

1953

Queen Elizabeth II and her husband, the Duke of Edinburgh, made her first visit to New Zealand in 1953, and these stamps were issued on December 9, 1953, to commemorate the occasion. The visit was part of a wide-ranging tour that the Queen and Prince Philip made following the coronation.



Queen & Coach

POSTAGE STAMP CENTENARY



Queen Elizabeth II



Maori Mailman



Douglas DC-3

New Zealand's first stamps — imperforates portraying Queen Victoria — were issued on July 18, 1855. To mark the 100th anniversary of these adhesives, the above set of three stamps was issued exactly 100 years later, on July 18, 1955. Two of the designs contrast early and modern means of delivering the mail.



Postage Stamps of New Zealand

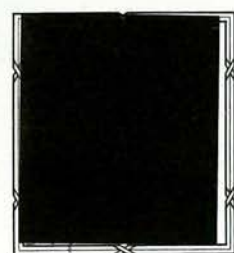
Parliament Buildings, Wellington



1p on 1/2p



Queen Elizabeth II



Queen Elizabeth II



DEFINITIVES OF 1953-57

These are the first definitive stamps of the new reign. They were issued on various dates between 1953 and 1957. The portrait of the Queen on horseback shows her on a typical occasion at the Trooping of the Colors.



Queen Elizabeth II





Parliament Buildings, Wellington

Postage Stamps of New Zealand



Life-saving Team

HEALTH STAMPS

1957

Beach scenes were chosen for the 1957 health series. The 2 + 1 shows a life-saving team in action, while the 3 + 1 shows children at play in the water.



Children Playing and Boating



Girls' Life Brigade Cadet



Bugler, Boys' Brigade

1958

RED CROSS

1959

The 1958 health stamps mark the seventy-fifth anniversary of the founding of the Boy's Brigade. The surtax on the health semi-postal stamps goes for maintaining children's health camps.



Globes and Flag

This semi-postal stamp, issued in 1959, honors the work of the New Zealand Red Cross with the surtax going to Red Cross work.

1959



Gray Teal

These 1959 health stamps were printed by Harrison and Sons of England. "Tete" is the Maori name for the Grey Teal; "Poaka" is the Maori name for the Pied Stilt.

Issued August 2, 1961, this pair of health stamps was recess-printed by Bradbury Wilkinson & Co. "Kotuku" is the Maori name for the rare White Heron, "Karearea" for the Bush Hawk.



Pied Stilt

1961



Great White Egret



Sacred Kingfisher

1960



New Zealand Pigeon

Recess-printed by Bradbury Wilkinson & Co., these stamps were issued on August 10, 1960. "Kotare" is the Maori name for the Kingfisher; "Kereru" is Maori for the Wood Pigeon.



New Zealand Falcon



REDRAWN DEFINITIVES

1955 - 1959

Elizabeth II is New Zealand's second Queen. Her great-great-grandmother, Queen Victoria, was recognized by the Maoris as ruler of New Zealand when they signed the Treaty of Waitangi, which ceded the islands to Great Britain.

Queen Elizabeth II

Queen Elizabeth II

SOUTHLAND CENTENNIAL



Whalers of Foveaux Strait



Notornis (Takahe)



"Agriculture"

1956

This trio of stamps marks the 100th anniversary of Southland, in the southern part of South Island, which is one of the three major islands that comprise the country. The twenty-mile-wide Foveaux Strait separates South Island from Stewart Island, the southernmost of the three main islands. There are many Scottish influences in Southland.

MEAT EXPORT

1957

The growth of the meat industry, which is important to the economy of New Zealand, began in 1882 when New Zealand first shipped frozen meat to Great Britain. These stamps were issued February 15, 1957, to mark the 75th anniversary of the country's meat export trade, of which mutton and lamb are the primary meats.



Lamb & Map



Lamb & Ships





Parliament Buildings, Wellington

1962



Red-fronted Parakeet

Issued October 3, 1962, these stamps were printed by photogravure by Thomas De La Rue & Co., Ltd., London. "Kakariki" is Maori for the small Parakeet, "Tieke" for the Saddleback.



Saddleback



Prince Andrew

1963



Prince Without Book

HEALTH STAMPS



Blue Penguin

1964



Red-billed Gull

Prince Andrew, the third child of Queen Elizabeth II and the Duke of Edinburgh, is shown on these health stamps issued August 7, 1963. The designs are based on photographs; the stamps were recess-engraved by Thomas De La Rue & Co., Ltd., London.



Kaka

The Kaka is a large parrot that is generally called by its Maori name. The Piwakawaka (Maori name) is known in English as a Fantail. These stamps were printed by photogravure by Harrison and Sons of England. They were issued August 4, 1965.

1965



Fantail

"Tarapunga" is the Maori name for the red-billed gull; "Korora" is Maori for the blue penguin. These health stamps were issued August 5, 1964. Harrison and Sons printed them by the photogravure process.

1966



Flightless Rail and Fern

The Bellbird, a small and undistinguished creature, is celebrated for its beautiful song. The Weka is a flightless bird of some size that preys on rats and young rabbits. The stamps were issued August 3, 1966.



Bellbird and Bough of Tree





The
**American Philatelic
Expertizing Service**



P.O. BOX 8000
STATE COLLEGE, PA. 16803

CERTIFICATE: 70899

AMERICAN
PHILATELIC SOCIETY

70899



Members of The American Philatelic Expertizing Service have
examined the item submitted and it is their opinion that it is
New Zealand, Scott No. 320, unused,
original gum, genuine in all respects.

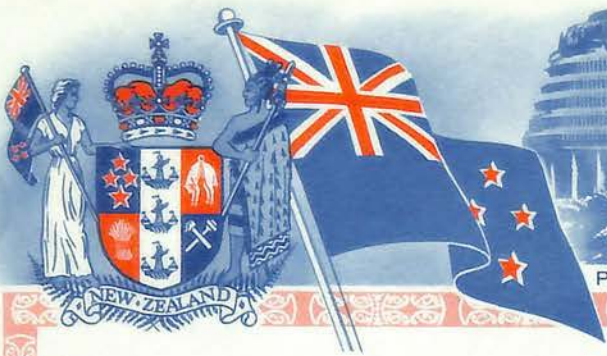
Date

DEC 22 1989

(APS Authorized Signature)

(ASDA Authorized Signature)

(Administrator Signature)



Parliament Buildings, Wellington

Postage Stamps of New Zealand

PLUNKET SOCIETY

1957

The Royal New Zealand Society for the Health of Women and Children is commonly called the Plunket Society after the wife of Sir Truby King, the Governor-General who helped found the Society in 1907.



Sir Truby King



Nelson Diocese Seal

NELSON CITY

1958

Nelson is a cathedral city located on Tasman Bay on the northern coast of South Island. This stamp was issued September 29, 1958, to commemorate the 100th anniversary of the founding of Nelson.

1958



Queen Elizabeth II



SIR CHARLES KINGSFORD-SMITH

1958

This stamp was issued August 27, 1958, to commemorate the 30th anniversary of the first crossing by air of the Tasman Sea. Sir Charles Kingsford-Smith made the flight in his "Southern Cross."



Kingsford-Smith & "Southern Cross"

HAWKES BAY PROVINCE

1958



"Pania," Napier



Gannets, Cape Kidnappers



Maori Shearing Sheep

Hawkes Bay Province is located on North Island, the capital of which is Napier, situated on Hawke Bay not far from Cape Kidnappers. These three stamps were issued on November 3, 1958, to mark the centennial anniversary of the founding of the province in 1858.



Jamboree Kiwi Badge

SCOUT JAMBOREE

1959

The Pan-Pacific Scout Jamboree was held in Auckland, New Zealand, between January 3 and January 10, 1959, and this stamp was issued on January 9, 1959, to commemorate the international gathering.





Postage Stamps of New Zealand

Parliament Buildings, Wellington

MARLBOROUGH PROVINCE



"Endeavor" at Ship Cove



Shipping Wool, 1857



Salt Industry, Grassmere

1959

Marlborough Province was founded in 1859 by shepherds who settled in the Wairau Valley. This trio of stamps, which were printed by the photogravure process, was issued on March 2, 1959, to commemorate the 100th anniversary of the founding of this province.

1960

WESTLAND



The Explorer



The Gold Digger

These stamps were issued to mark the 100th anniversary of the turning over of the Westland coastal area by local Maoris to the Governor as representative of the Queen. G.R. Bull and C.R. Smith designed the stamps, which were printed by the photogravure process.

CENTENNIAL



The Pioneer Woman

CHRISTMAS 1960



Rembrandt Painting



2 1/2p on 3p

1961

This first New Zealand Christmas commemorative was issued November 1, 1960. It was produced by the photogravure process by Harrison and Sons of London. Twenty million copies were printed.

Durer's painting is housed in the Uffizi Gallery, Florence, Italy. Released on October 16, 1961, this stamp was printed by Harrison and Sons of London by the photogravure process in sheets of sixty.

1961 CHRISTMAS



Durer Painting





Parliament Buildings, Wellington

Postage Stamps of New Zealand

TELEGRAPH CENTENNIAL

1962

The first telegraph circuit in New Zealand — between Lyttleton and Christchurch — went into operation on July 1, 1862. These stamps were issued June 1, 1962, to mark the 100th anniversary of the inauguration of that first telegraph circuit. A.G. Mitchell and L.C. Mitchell designed them.



Morse Key



Teleprinter and Tape

DEFINITIVES

1960 - 1966



Manuka Flower



Karaka Flower



Kaka Beak Flower



Titoki Flower



Kowhai Flower



Hibiscus Flower



Mountain Daisy



Clematis



Koromiko Flower



Flag



Timber Industry



Rata Flower

These pictorial stamps, which were issued between 1960 and 1966 and feature various New Zealand cultural, scenic, industrial, and floral designs, were produced by the photogravure process. The flag depicted on one of the values was officially adopted as the New Zealand Ensign for general use in 1902. The stars stand for the constellation of the Southern Cross.





Parliament Buildings, Wellington

Postage Stamps of *New Zealand*

DEFINITIVES



Rainbow Trout



Plane Spraying



Tiki

1960 - 1966



Maori Rock Drawing



Butter Making



Sutherland Falls



Ngauruhoe Volcano



Pohutu Geyser



Tasman Glacier

1963 - 1964

New Zealand's hilly topography calls for widespread use of aircraft for farming tasks, mainly topdressing and chemical spraying. Mt. Ngauruhoe, the peak shown on the high value, is the country's only generally active volcano.



Plane Spraying



Ngauruhoe Volcano





CHRISTMAS

1962

October 15, 1962, was the first day date for this stamp, which shows a painting from the National Gallery in London. Harrison and Sons of London printed it by the photogravure process.



Madonna

1963

October 14, 1963, was the day of issue for this Christmas commemorative. Titian's painting is in the National Gallery in London. Harrison and Sons produced it by the photogravure process.



Holy Family

RAILWAY CENTENNIAL

1963

The 100th anniversary of the operation of the first railway in New Zealand — at Christchurch — is commemorated by this set, issued November 25, 1963. The early locomotive "Pilgrim" is shown on the low value. A diesel-electric locomotive (DG Class) is on the high value.



Old and New Engines



Old and New Engines

CABLE

1963 SERVICE

This stamp — issued December 3, 1963 — marks the start of the operation of the cable (COMPAC) that links Australia with Canada by way of New Zealand and Fiji. It was printed by photogravure by the Note Printing Branch of the Australian Reserve Bank.



Cable Around World



Steering Wheel

ROAD SAFETY

1964

To promote highway safety, this stamp was issued on May 1, 1964, National Accident Free Day in New Zealand. L.C. Mitchell created the design, and Harrison and Sons produced the stamp by the photogravure process in a quantity of 14,450,160.

DEFINITIVE

1964

CHRISTMAS

1964

The first Christian service in New Zealand was conducted by the Reverend Samuel Marsden on Christmas Day of 1814 at Rangihoua Bay. This stamp, issued October 12, 1964, features L.C. Mitchell's painting of this first service.



First Christian Service



Black Surcharge

This revenue-type stamp with the value surcharged was issued December 14, 1964, for use as a definitive. H.L. Richardson created the Arms Type design motif, which was used primarily for postal fiscal issues.



HEALTH ISSUES



Man and Boy Playing Rugby

1967

Rugby is played throughout New Zealand, and the national Rugby teams (known as the "All Blacks" from the color of their gear) are highly regarded for their prowess. L.C. Mitchell designed both of the stamps.



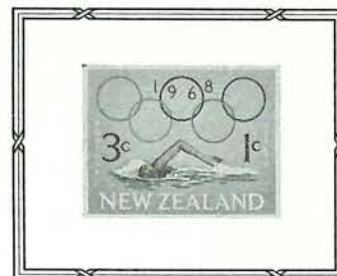
Man and Boy Playing Rugby

1968

This second of the sports series of designs for the health semipostals features popular Olympic sports in designs by L.C. Mitchell. The quadrennial Olympic Games were held in 1968.



Boy Running



Girl Swimming



Boys Playing Cricket

1969

Health Camps were founded in 1919 by Dr. Elizabeth Gunn; one of these 1969 stamps marks the 50th anniversary of the Camps. The others honor the New Zealand Cricket Council on the 75th anniversary of its founding. The stamps were printed by offset lithography.



Dr. Elizabeth Gunn



Girls Playing Cricket



Girls Playing Basketball



Boys Playing Soccer

1970

For the fourth year health stamps in 1970 featured sports: soccer and basketball. L.C. Mitchell designed these stamps, which were printed by the Delacryl process by Thomas De La Rue & Co., Ltd.





Parliament Buildings, Wellington

Postage Stamps of *New Zealand*



Manuka Flower



Karaka Flower



Kaka Beak Flower



Kowhai Flower

DECIMAL CURRENCY

1967 - 1970

Because of her conversion to Decimal Currency, New Zealand issued this new definitive set, utilizing many of the design motifs from the previous series. Great Britain and Commonwealth countries and colonies throughout the world similarly converted to the Decimal System during this period.



Hibiscus



Mountain Daisy



Clematis



Koromiko Flower



Flag



Rata Flower



Timber Industry



Brown Trout





Parliament Buildings, Wellington

Postage Stamps of *New Zealand*



Tiki



Maori Rock Drawing



Tiki



Ngauruhoe Volcano



Butter Making



Ngauruhoe Volcano



Pohutu Geyser



Fox Glacier



Sutherland Falls



Pohutu Geyser



Tasman Glacier





Postage Stamps of New Zealand

Parliament Buildings, Wellington

DEFINITIVES

1968 - 1969



Trawler and Catch



Apples and Orchard



Lumber and Radiata Pines



Sheep and Woolmark



Dairy Farm



Hoist and Grazing Cattle

These additions to the definitive series feature various New Zealand industries, each of which is an important source of export revenue: fishing, fruit, timber, wool, meat, and dairy. The 10c and 25c denominations were produced by the photogravure process; the others were printed by lithography.



Supreme Court Building



Coat of Arms



"Justice" from Memorial

LAW SOCIETY

1969

These stamps were issued April 8, 1969, the opening day of an international law conference at Rotorua. They commemorate the 100th anniversary of the New Zealand Law Society. R.M. Conly created the designs for the trio, which was printed by the lithography process.



Otago University



Conferring Degree

UNIVERSITY OF OTAGO

1969

The University of Otago was established on June 3, 1869 and given the right to grant degrees in Arts, Medicine, Law, and Music. R.M. Conly designed these stamps, which were issued June 3, 1969; they were printed by the lithography process.





CAPT.
JAMES COOK
1969



Cook, Transit and Octant



Banks and Endeavour



Dr. Solander & Matata Branch



Elizabeth and Cook's Chart

These stamps were issued to mark the 200th anniversary of the 1769 landing in New Zealand of Captain James Cook. His voyages through the Pacific disposed of the legend of a great undiscovered southern continent in the temperate zone of the south. An embossed effect was achieved on the stamps by a depression (in the shape of the effigies) on the underside. The first day date of the series was October 9, 1969.



434a

VFNH

VFNH 15.00





EUROPEAN SETTLEMENT 1969



Kerikeri



Bay of Islands

These stamps were issued on August 18, 1969, on the occasion of the 150th anniversary of the founding of Kerikeri, the oldest existing European settlement in New Zealand, and to commemorate early European settlements in the country.

CHRISTMAS 1969



Nativity by Fiori



Nativity by Fiori

The 1969 Christmas issue was released on October 1, 1969; there are two varieties: watermarked and unwatermarked. The Fiori painting that is shown is from the Pinacoteca Ambrosiana in Milan, Italy. The stamps were produced by photogravure.

CORSO ANNIVERSARY 1969



Wheat and Child

This set, which was issued November 18, 1969, commemorates the 25th anniversary of the founding of the Council of Organizations for Relief Services Overseas, a wholly New Zealand group. L.C. Mitchell designed the stamps, which were printed by the photogravure process.



Drinking Milk & Cattle

CARDIGAN BAY 1969



Cardigan Bay

Cardigan Bay was the first standard bred light-harness race horse to win a million dollars in stake money. This stamp was issued on January 28, 1970, to mark the return of the horse to New Zealand from the U.S., where he was taken in 1964.



New Zealand Pavilion



Geyser Restaurant

EXPO '70

The international exhibition EXPO 70 was held in Osaka, Japan, March 15-September 13, 1970. These stamps were issued April 8, 1970, to honor the fair and to mark the participation of New Zealand in it. The Japanese Government Printing Bureau produced the set by the photogravure process.



Bush Walk



Auckland/Waitheke

EXPOSITION PHILATÉLIQUE MONDIALE

AUCKLAND & NORTHLAND

PHILATELIC FIRSTS



WORLD STAMP EXHIBITION
NEW ZEALAND 1990

BRIEFMARKEN · WELTAUSSTELLUNG

947



EARL P. L. AFFELBAUM, INC.
2006 WALNUT STREET

PHILA., PA. 19103

4966

267

No 477466

31-33 3C

Nreal

22.00

12.50

* (O) C BL PBL SH WH
XF VF (F) VG og ng NH LH



EARL P. L. AFFELBAUM, INC.
2006 WALNUT STREET

PHILA., PA. 19103

4968

267

No 623108

34

NZEAL

50
325-

* (O) C BL PBL SH WH
XF VF (F) VG og ng NH LH

th.



EARL P. L. APFELBAUM, INC.
2006 WALNUT STREET PHILA., PA. 19103

STOCK NO 10477520
COUNTRY NEW ZEALAND

LOT NO. 4969
SALE NO. 267

Nº 477520

37

Nzeal

15.00
~~100.00~~

* (O) C BL PBL SH WH
THIS LOT HAS BEEN MICROFILMED
XF VF (F) VG og ng NH LH



EARL P. L. APFELBAUM, INC.
2006 WALNUT STREET PHILA., PA. 19103

S
C
C
C
C
Nº 629916
40-41

NZEAL

14.00
~~7.50~~

4971
267

* (O) C LL PBL SH WH
THIS LOT HAS BEEN MICROFILMED
SU XF VF (F) (VG) og ng NH LH HR



EARL P. L. APFELBAUM, INC.
2006 WALNUT STREET PHILA., PA. 19103

STOCK NO 10487383
COUNTRY NEW ZEALAND
C
DE Nº 687383
C

LOT NO. 4980
SALE NO. 267

83

NZEAL

240.00
~~375.00~~

* (O) C BL PBL SH WH
THIS LOT HAS BEEN MICROFILMED
SU XF (VF) (F) VG (og) ng NH LH HR

th.



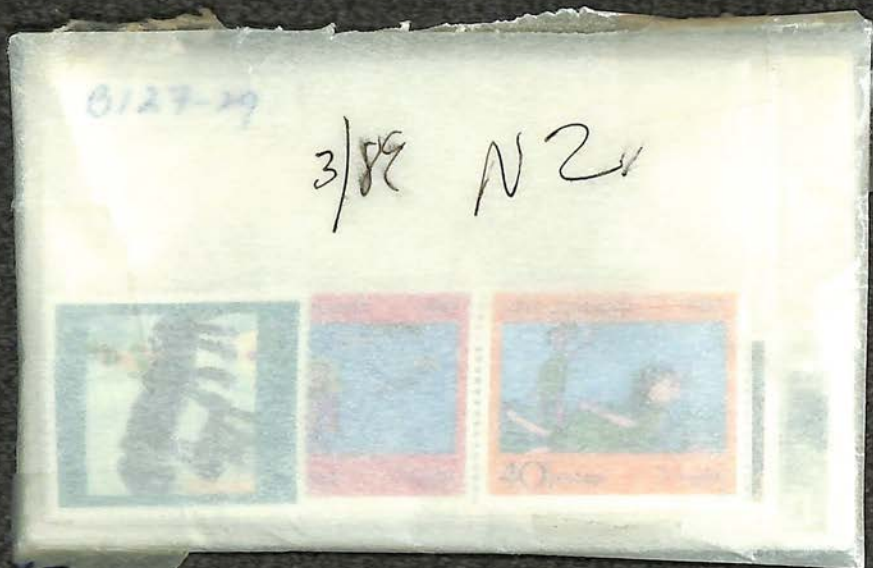
186-065



719-13
05

~~GREECE~~
*896-900





75

525-12

NEW

2.35



396-8

1986 Europa

1.00



**NEW ZEALAND
POST
PHILATELIC**

~~898-17702~~
N2 - 4/92

\$1.80

ISSUED BY NEW ZEALAND POST
IN SUPPORT OF NEW ZEALAND 1990
WORLD PHILATELIC EXHIBITION
AUCKLAND, 24 AUGUST - 2 SEPTEMBER 1990



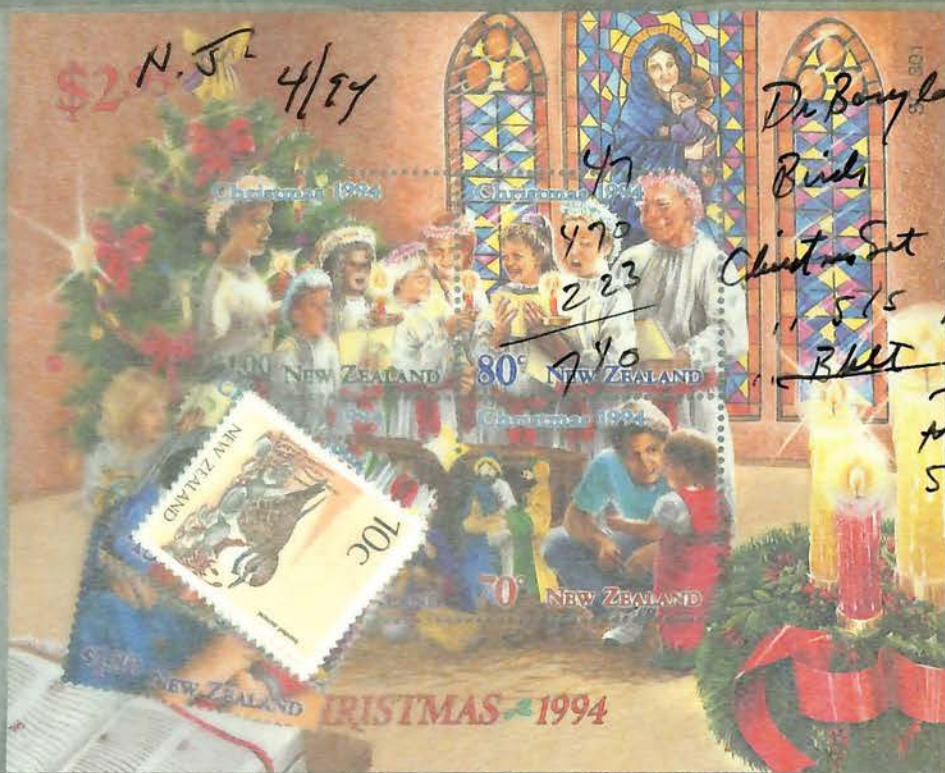
BELGICA 20



Esther Bunning
of Watermark

to commemorate Belgica 2001, Brussels 9-17 June

\$2.35 N.J. 4/94



Dr. Bary Loh

Birds KL

Christmas Set KPM

11.515 LMK

~~BUT~~ HMT

MKE

SKX

N2 8/94

SC294

1994 HEALTH STAMP ISSUE
75TH ANNIVERSARY OF CHILDREN'S HEALTH CAMPS
1919-1994

\$2.35

Dr. Bary Loh



Hologram MS

Butterfly LUT

Health Set LKM

5.75 LKM

Seljaol AM

YXP



Barylak mint new zealand



269270271272273-9



285 297
NH NH

298 299
NH

Barylak mint new zealand



194 195 196 203 204 205 206 209 211



214 215 216 226 227 228 228B 228C 229-41



228C 229-41

Barylak new zealand mint



160 161 162 163 164 165 166 167 168



169 174 175 176 177 178 179 180



184 185 186 188 189 190 191 192 193

NH NH

NH
Best
NH

6/89

N2,



6/89 N2



125th Anniversary of the
First Issue of New Zealand
Postage Stamps 1855-1980.

Issued by the New Zealand
Post Office in support of the
Zeapex '80 International
Stamp Exhibition, Auckland,
August 23-31 1980.



NZ. 3/01

Dr Barrydale

~~3.00~~



FEB / 89

NEW ZEALAND 1987
\$1.70 -
'36.70'

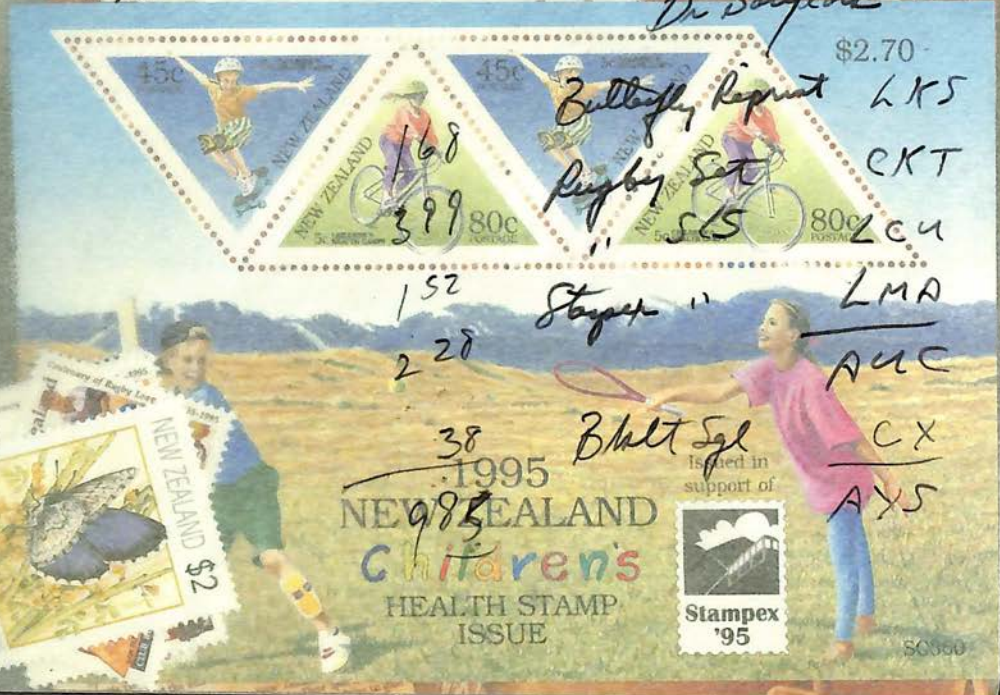


VAL VALUE \$20

VALUE \$50



NZ 8/9-



Dr. Borylaka

\$2.70

Bullseye Reprint LKS

CKT

Rugby Set

2c4

" SLS

LMA

Stayer "

AUC

Bhlt Sgl

CX

Issued in support of



SC050

1995
NEW ZEALAND
Children's
HEALTH STAMP
ISSUE

N. 2

4/95

Dr. Barylah

Butterflies YMY

Bird Reprint YC

Set 6 80c YXS

1 PMK



NZ, 4/95

Dr. Barylah

1/3 Bird - Reprint

UAL

Other Definitives

CYP

Only
Bullt

UAX

CLY

LUCK



STAMPS

FROM NET LIST



B1-2
1750

B2
1000

B3
600

MINIATURE
SHEET \$1.82



NZ- 10/01



32

NZ

18 USED, AVE, THIN Price 27-



Style 102a

NEW ZEALAND - USED
AR 86 12/85

Price 5/20



Item No. GK-102A

NZ

880-2 Price 1.40



Style 102a

NZ

172-75 88 Price



Item No. GK-102A

154-56

Price



Item No. GK-102A

NEW ZEALAND

843 Price 1.20



Style 102a

New Zealand 815-817 Price 1.05



Style 102a

NZ

068B LH 7- Price



Item No. GK-102A

NZ

64 AVE, NO GUM Price 18-



Style 102a

NZ

065LH 2- Price



Item No. GK-102A