





100

ISSUED UNDER AUTHORITY OF
JAMES A. FOLLY, POSTMUSSEUR GENERAL

PRINTED BY
DEFICIT BUREAU OF THE POST OFFICE



IN COMPLIMENT TO
THE COLUMBUS PHILATELIC CLUB



COLUMBUS, OHIO.
PLATE NUMBER







Memphis 2c Provisional

TYPE 1
NOENS



Genuine

TYPE 2
TWO DOTS IN 'P'



TYPE 3
SOLID SQUARE
BELOW 'M'
CENTER STROKE



TYPE 4
SOLID SQUARE
TO LEFT OF 'M'



Memphis 2c Provisional

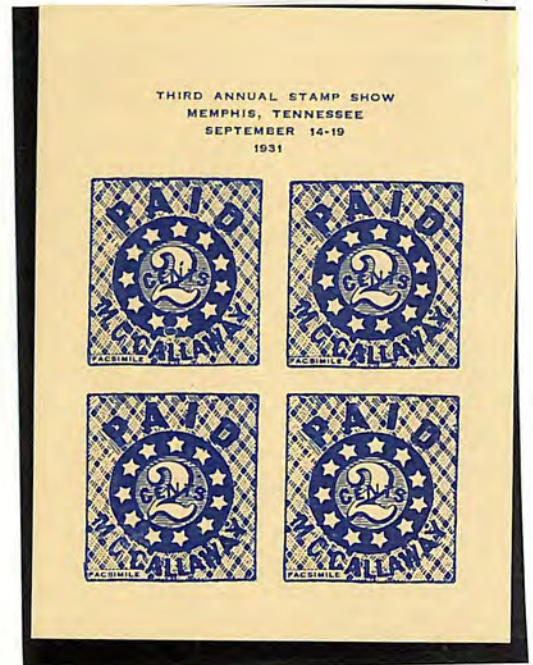
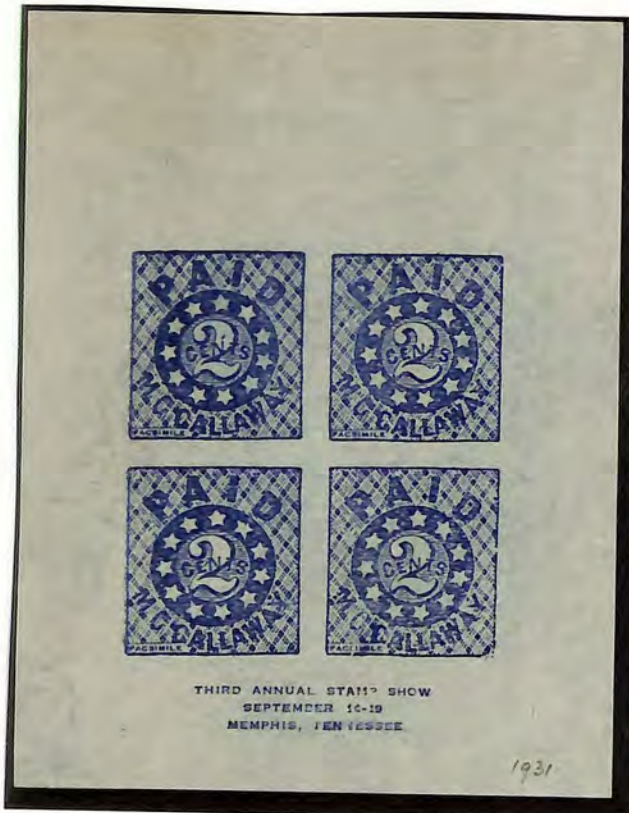
TYPE 5
BROKEN TOP
TO "2"



TYPE 6
SCOTT
1886 ILLUS.



FACSIMILE



Memphis, Tenn

Genuine

Forgeries



Type 3



Type 3



Type 2

Type 2

Type 3



FANTASIES & FAKES

Five Cent Memphis, Tenn. Provisional Counterfeits



The counterfeits come in two types. One is distinguished by a small, rounded ball on the numeral "5."

On the second type, the shading on the "5" cuts off about one-third of the diamonds immediately below. On the genuine stamp, the diamonds are intact.

GENUINE PROVISIONAL



Rounded Ball

Memphis 5c Provisional

TYPE 1

MOENS
Full Crossbar
"A"
Partial
diamonds
under the 5



Genuine

TYPE 2

DETACHED
CROSSBAR "A"



TYPE 3

SMALL "L"
in Memphis



TYPE 4

OUTLINE OF "5"
BROKEN AT
FOOT



HORIZ.
LAID

HORIZ.
LAIN
Lined Paper

Memphis 5c Provisional

TYPE 5

AS SCOTT
BUT SHOWN
AT RIGHT

Crude
Outline



FACSIMILE



PRINTED BY A. DIETZ ACCORDING TO SCOTT

Genuine

Memphis, Tenn
Additional Forgeries



Type 4



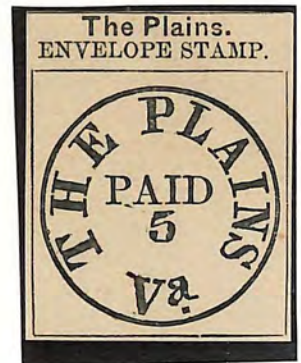
Type 5

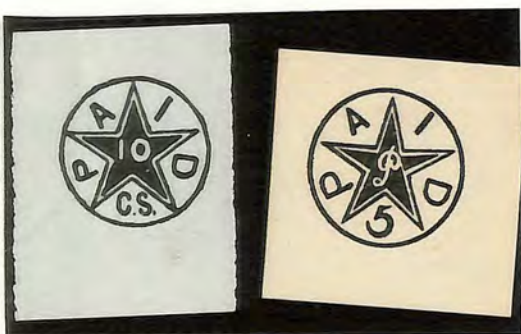
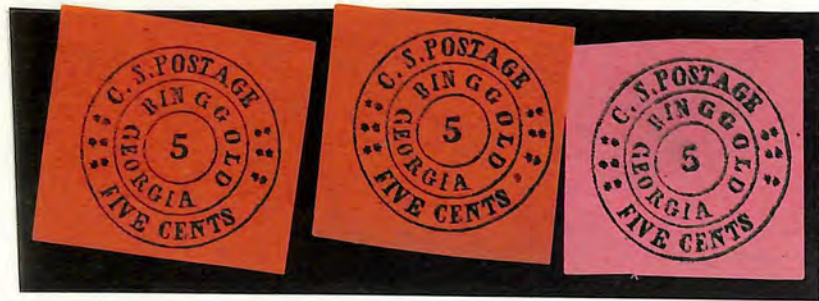
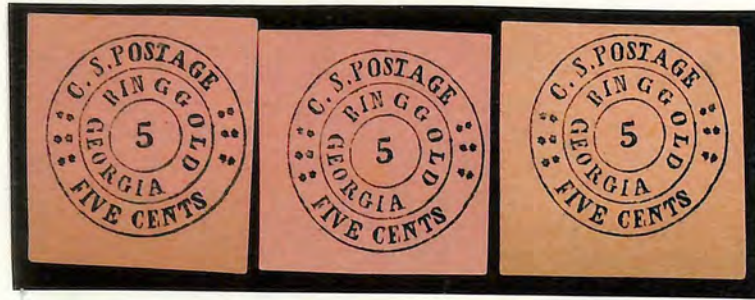


Cancelled
(unidentified Types)

Memphis, Tenn
F. Bradley P.M.







Richmond, Va
5c, Design I

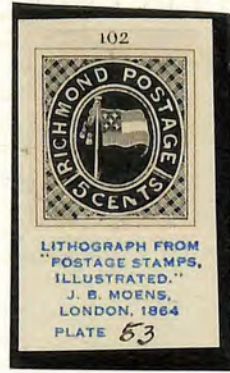
Type I

Tall, thin M in Richmond

Flag does not touch oval at right, large "R"



fold filled in



Type II

Flag does not touch oval, small "R" Short, narrow M in Richmond



Type III

Flag touches at right, design defect at right worsened

Short, wide M in Richmond



v. 1216

b. 121d



"5" filled in



Richmond Va
5¢ Issues

Like Type I (but later issue?)



Type II



Type III



Richmond Va
54 Issues

Type III



Richmond, VA
Other CSA Flag Issues

Cancelled 5¢



Type III



Type III

3¢ Issues



Like Type I

5¢ Different Flag Design (Crude)



Lynchburg, Va

E.H. Lake

similar to Lynchburg

E.H. Lake



S.A. Taylor production



R.H. Glass



Type I



Type 2A



Type IA



Type 2

Lynchburg, Va.



Bogus Provisional PO?

Lynchburg Adhesives

TYPE 1
NO FLAG FLAW
NO PERIODS "RH"
OVAL COMPLETE



TYPE 1A
AS ABOVE
BUT OVAL FLAW



TYPE 2
PERIODS "RH"
LEFT SIDE DENT



TYPE 2A



Lynchburg, Va.

Design I



Design II



Bogus Provisions!

Lynchburg, VA



Lynchburg Entires

TYPE 1
NO BREAK
FINE IMPRESSION
(CALLED REPEAT)



TYPE 2
FAINT OUTLINE LEFT
NO BREAK
AT FOOT



↑

↑ ↑ ↑
HORIZ
RULED
PAPER

HORIZ
LAID PAPER



TYPE 2 LATE
ORNAMENT SHORT
AT TOP RIGHT



Lynchburg



FANTASIES & FAKES

Nashville, Tenn. Provisional Counterfeits



These woodcut fakes come in two distinct types. Type I has a double crossbar in the letter "A" of Nashville. The top bar of the Number "5" is long and thin.

Type II lacks a period after the "M" of P.M. On the original, this period forms a colon with the period after "Tenn."

Genuine Provisional

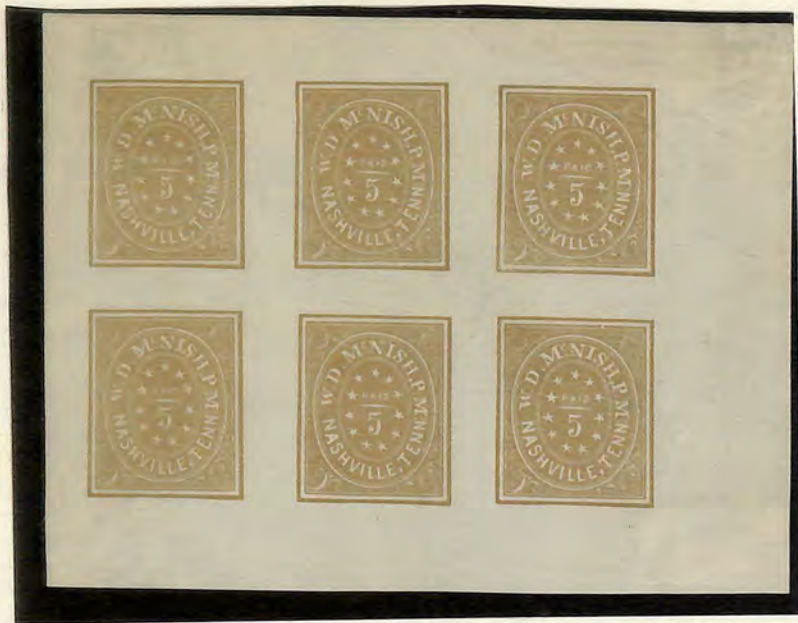
Type I



Type II



Nashville
5¢ Issues



Nashville, Tenn.

A1 A2

Five varieties of the 3c.
88 A1 3c carmine
No. 75 was not put in use.

J. W. Scott
illus.
(Type I)

Type II



MOENS



19.

LITHOGRAPH FROM
"POSTAGE STAMPS,
ILLUSTRATED."
J. G. MOENS,
LONDON, 1884
PLATE 29



Selling _____

Local Price _____
Country Price _____

*61 X 2
EASTMAN KODAK



MADE IN CANADA

HECO STYLE 102a

Nashville
5¢

Type II



H. laid

Porous

Stiff Card



Type I



Porous

Stiff

H. laid

H. laid



Nashville

5¢ Issues

Type I



Cancelled Examples



Other Types (Not I or II)



Nashville

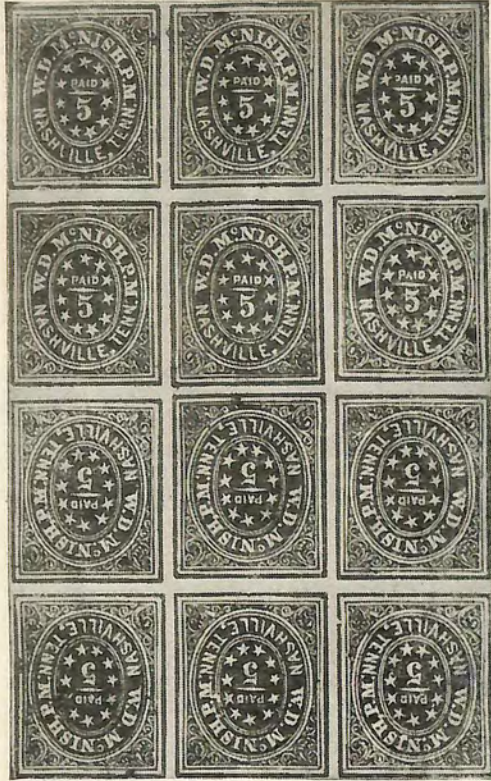
10¢ Issues



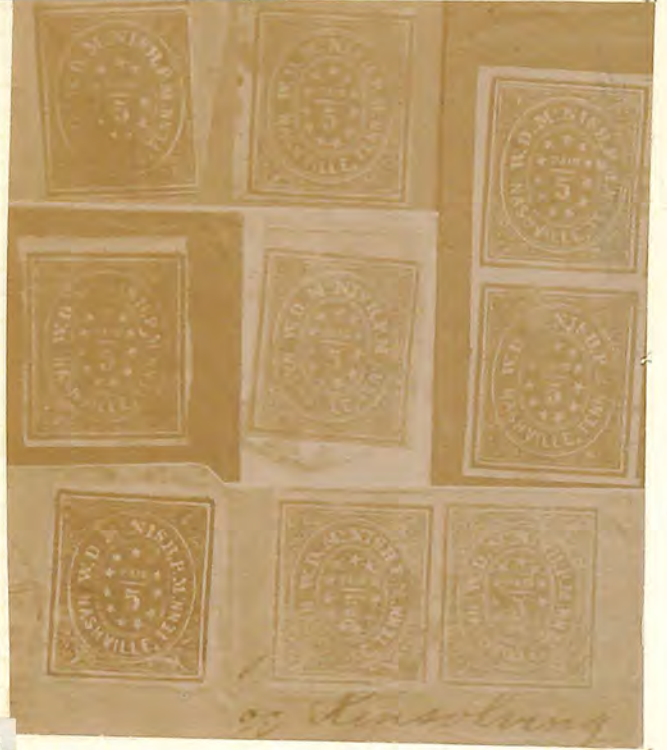
The 5c Nashville.

JOHN A. KLEMMAN.

Phil. Gayle Sept 1916



1376



Two back pair found by Vernon Baker, Elyria, Ohio 1936. Reported as "Brick Red" - not listed by Scott

Laid

Laid

*See 10
They differ*

*Not Scott
all
listed
Col
B72*

1915

Block

Two sheets -

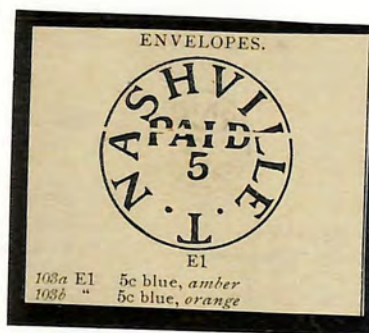
owned by Judge
Cooper of Nashville
& given by him to
his nephew who
had them in his

possession 20 yrs
Since 1885 -
this ^{sheet} sold by him to
Massaw Stamp
Co in Sept 1916



These ~~stamps~~ were
bought by Judge
Cooper at the P.O. in
Nashville in 1861

Nashville



Nashville



Genuine?



Photocopy?

Type I Forgery



Orange
Not type I?
Thicker Letters

Copy from
Scott Album?

FANTASIES & FAKES

Two Cent New Orleans, La. Provisional Counterfeits



Genuine



Genuine



The counterfeits have thinner fleurons, particularly in the bottom corners, and no period after "Riddell" in the lower panel.

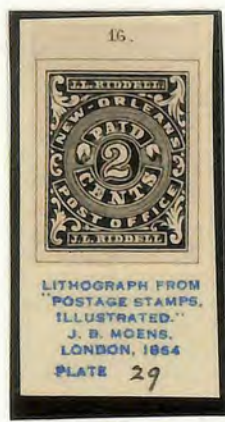
In some examples, the number "2" does not contact the enclosing circle at lower left.

GENUINE PROVISIONAL



NON-CONTACT "2"

New Orleans
2¢ Forgeries



LITHOGRAPH FROM
"POSTAGE STAMPS,
ILLUSTRATED."
J. B. MCENS,
LONDON, 1864
PLATE 29



ILLUSTRATION,
J. W. SCOTT'S
INTERNATIONAL
ALBUM 1886.



Less Common (?) Forgeries



Photo copy (?)
Crude



The official label for the
Fourth Annual Exhibit of the
Crescent City Stamp Club
to be held Jan. 10, 11, and
12 at New Orleans, La.
"Stamps" Jan. 4, 1936



Crude

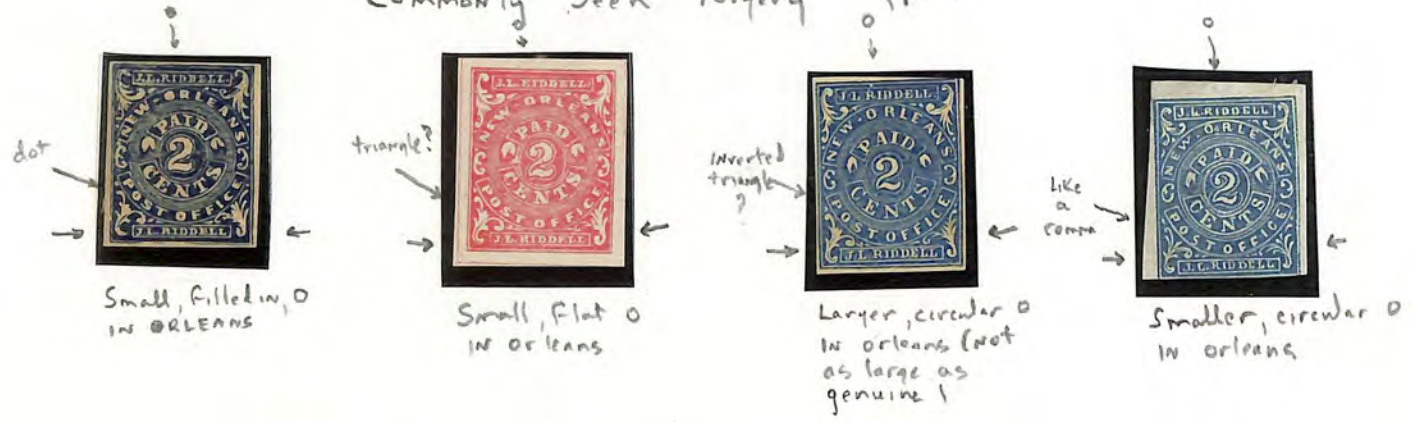


Low
tail
2 2 3



Photo copy (?)
of genuine

Commonly Seen Forgery Types



New Orleans
2c Fringed

Small, filled in Os in Orleans



New Orleans
2¢ Forgeries

Small, flat Os IN ORLEANS



New Orleans
2¢ Forgeries

Larger, Circular Os in ORLEANS



Smaller, circular O in ORLEANS



New Orleans
2c Forgeries

Miscellaneous



Cancelled



NEW ORLEANS

Some of the fakes lack the small "8" within the center numeral "5." The ornament in the lower left corner resembles a salad fork or extended hand.

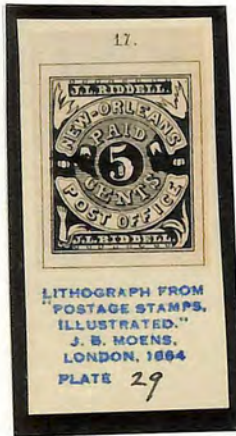


Taylor

Taylor

Upham

Genuine Provisional Upham?



Upham



Genuine

New Orleans
5¢ Forgeries
S.A. Taylor



New Orleans
5¢ Forgeries
Upham (8" in 5)



New Orleans
5¢ Forgeries
Upham (No "8" in 5)



Type I

large numerals



Type II

smaller numerals at bottom right



The identical cut later used to print copies in color.

JUNE 1, 1870.]

THE PHILATELIST. (BRIGHTON, ENGLAND)

75

CONFEDERATE STATES.

This cut portrays a stamp we have every reason to believe unique in the collection of an English amateur. The representation is as faithful as was possible for the engraver to manage, but the original has the head and lettering slightly but sensibly embossed, a peculiarity partaken of by the 2 c. and 5 c. of the same city. Although figured and described by M. Moens last month, that gentleman has evidently not seen the stamp itself, otherwise so distinctive a circumstance could not possibly have escaped a philatelist of his acute and experienced discernment. What noteworthy head of the period is depicted thereon, we are not in a position to verify: but for the authenticity of the individual we can positively vouch; the sole existing known specimen having been given to an English collector by a relative after the capture of the city, the natural consequence of which event was, the total destruction of stamps and dies. It is carmine-red on white laid paper; and like the other emissions of New Orleans, imperforate.



In our description of the Charleston local last month, the words *POST PAID* were erroneously printed instead of *POSTAGE*. We understand specimens of it are known both bright blue and dull greyish blue. We may here remark, in relation to certain Confederate provisionals described by Mr. J. W. Scott in *The American Journal of Philately*, that the wonderfully rare Knoxville envelope enriches the same priceless collection as the New Orleans stamp figured above; and that both its owner and a provincial philatelist possess the black 2 cents of Mobile alluded to by Mr. Scott.

New Orleans, LA
Additional Issues ✓

Type I



CONFEDERATE STATES.

We have to correct a slight error in our remarks on certain rarities noticed last month. The New Orleans stamp there figured is implied to be in a London collection: it is really in a provincial one, that of the well-known J. P. The Knoxville on laid paper, we find is a cut specimen, possibly an adhesive, but probably that alluded to by Mr. Scott as an envelope: this enriches the Ph. collection. With regard to the former stamp, our *confrères*, both of Brussels and Paris, seem annoyed at its appearance: the former sneers at its being designated unique; an additional specimen, and an essay, black on thin paper, having come to light. The latter devotes more than two long columns to smash the same utterly. His arguments condensed are, *imprimis*: our ignorance, whose head is intended to be represented,—for a like reason, the two sets of Chilians, and perhaps the present Spanish emission, might be condemned. *Secundo*: the slightly embossed design. This peculiarity is actually in favour of its genuineness, other issues of New Orleans being in the same style. The value is next adduced as suspicious; but the objector might bear in mind that the stamp was prepared for emission just before the capture of the city, when the value of everything was considerably raised. Finally, no other local Confederate bearing a portrait is adduced as an unanswerable argument of its falsity—with what reason, escapes our apprehension. The writer concludes with a note of defiance at the thunders of Jupiter and the fortunate possessor of the “original of the miniature.”



Pittsylvania Court House, Virginia Provisional

Five Cent Forgeries

Type 1 - trefoil ornament at top has curved shading rather than vertical lines, 1886 Scott album cut matches adapted for forgeries



1886 Scott album illustration

Type 2 - as album cut but break in outer frame line at top left, "T" of "CENTS" unbroken, produced by S.A. Taylor



horizontal laid paper

horizontal laid paper

Type 2a - later state of type 2, "T" of "CENTS" broken, produced by S.A. Taylor



Pittsylvania Court House



genuine



Pittsylvania Court House



Pittsylvania Court House



Type I

horizontal lines in numeral



Type II

solid numerals
large stars



Type III

small stars



Type I

"cts" inside hollow numeral



Type II

numeral sans serif



Type III

numeral with serifs



UNKNOWN Type



Type I

shaded and lined numeral



Type II

serifs on numeral



Type III

numeral with outline shading



Type IV

squat numeral



Type V

craggy numeral



Photo

Type I
squat numeral



Type II
large numeral



horiz laid watermarked

Type III
sans serif numeral



Additional Type II



Type I

broken serif on "1"



Type II

"1" with serif at top only



Type III

large "10" with serifs



Type IV

small "10" with serifs

