



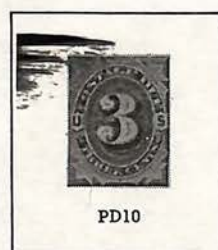
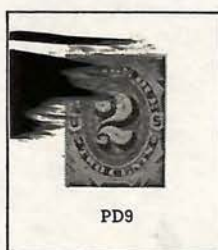
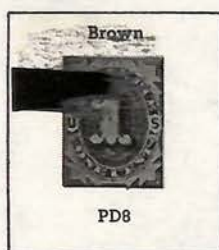
POSTAGE DUE STAMPS

Issue of 1879

Printed by the American Bank Note Co.

Unwatermarked

Perforated 12

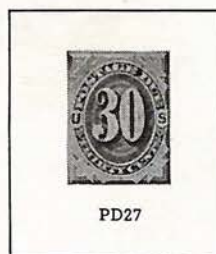
*Issue of 1887-89*

Mail in many cases was found to be insufficiently prepaid. Prior to July 1879, the postal clerk would note, in hand or by rubber stamp the amount to be collected. No receipts or vouchers were given and very little record was kept. With the postage due issue, a stamp affixed to the letter indicates the amount of postage to be collected upon delivery. The balance of stamps against the money thus collected enables the Post Office Department to keep accurate records of this important source of revenue.



POSTAGE DUE STAMPS

Issue of 1891-93



PD27



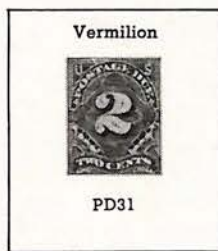
PD28

Issue of 1894

Printed by the Bureau of Engraving & Printing

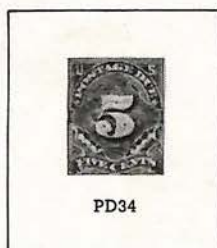
Perforated 12

Unwatermarked



Vermilion

PD31



PD34



PD35



PD36



PD37

In 1894 the Treasury Department assumed the manufacture of stamps and from that point on the stamps were printed by the Bureau of Engraving and Printing.



POSTAGE DUE STAMPS

Issue of 1895

Perforated 12

Double-line Watermark



PD40



PD41

*Issue of 1910-12*

Perforated 12

Single-line Watermark



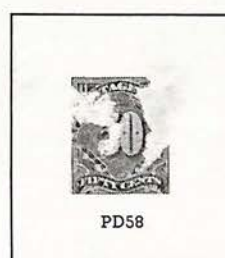
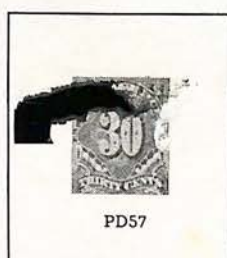
PD47



PD49



POSTAGE DUE STAMPS

*Issue of 1914-15*PERFORATED 10
SINGLE-LINE WATERMARK*Issue of 1916*PERFORATED 10
UNWATERMARKED*Issue of 1917-25*

PERFORATED 11





POSTAGE DUE STAMPS

Issue of 1930-31

PERFORATED 11



PD77



PD74



PD75



WITH this issue a newly designed set of Postage Due stamps were made available. For the first time dollar values were included.

Issue of 1931-32

ROTARY PRESS PRINTING

PERFORATED 11 x 10½



Issue of 1956

PERFORATED 10½ x 11



UNITED STATES

POSTAL ISSUES



Postage Dues Stamps

Issue of 1959

Perforated 11 x 10½



This new series of Postage Due stamps replaced the previous issue which had been in use for 29 years. Printed in two colors, this set also included denominations never before used in dues stamps.

Issue of 1978





SPECIAL DELIVERY

Printed by the American Bank Note Co.

Perforated 12

Unwatermarked

Issue of 1885



Issue of 1888



Issue of 1893



Messenger Running

Printed by the Bureau of Engraving and Printing

Issue of 1894



Double-line Watermark

Issue of 1895



Messenger Running

Issue of 1908



Helmet of Mercury

Issue of 1902



Messenger on Bicycle

Single-line Watermark

Issue of 1911



Issue of 1914



SD9

Messenger on Bicycle

The demand for fast delivery of mail brought forth the Special Delivery Issues. When affixed to a letter it indicated that the letter would secure immediate attention and be delivered between hours of 7 A.M. and midnight.



SPECIAL DELIVERY

1969



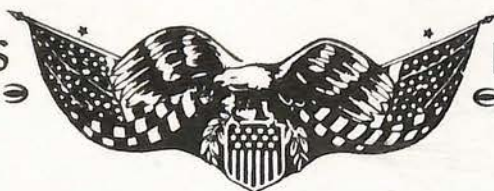
1971



Two Arrows

Issued to meet the increased rates of the Special Delivery fee.





PARCEL POST STAMPS

Issue of 1912-13

PERFORATED 12

SINGLE-LINE WATERMARK



Post Office Clerk



City Carrier



Railway Postal Clerk



Rural Carrier



Mail Train



Steamship and Mail Tender



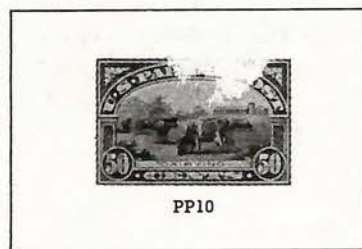
Automobile Service



Airplane Carrying Mail



Manufacturing



Dairying



Harvesting



Fruit Growing

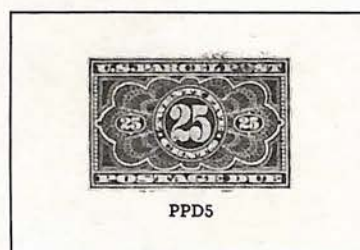
SPECIFICALLY created to meet the requirements of fourth class matter by Act of Congress approved August 24, 1912, these stamps were declared valid for all purposes for which regular stamps were valid. The 20 cent value featured as the central part of its design an aeroplane and this was the first time any country had ever featured an aeroplane on its stamps.

PARCEL POST POSTAGE DUE

Issue of 1912



PPD4



PPD5

SPECIAL HANDLING

Issue of 1925-29



REGISTRATION STAMP

Issue of 1911

PERFORATED 12
SINGLE-LINE WATERMARK



Issued to prepay registry fees these stamps were soon discontinued, as ordinary postage stamps were valid for the same purpose.



The Special Handling series of stamps were provided for use on fourth class matter and when affixed would secure for such mail the expeditious handling accorded to first class matter.

1876

CERTIFIED MAIL STAMP

Issue of 1955

PERFORATED 10½ x 11



Issued as a simplified form of registration applicable to mail having no intrinsic value.