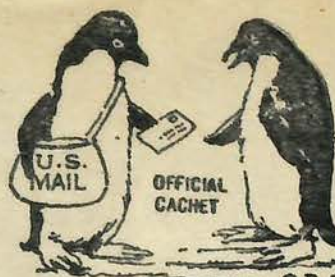




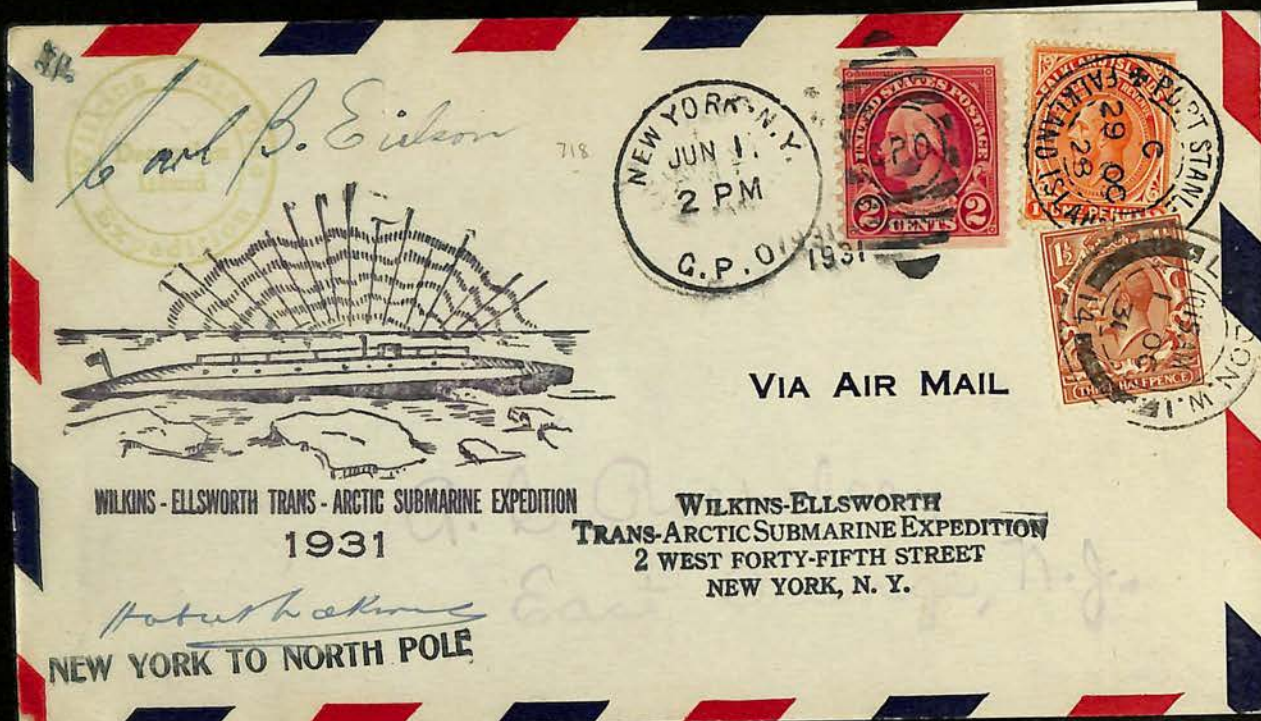
ADMIRAL R. E. BYRD
1933 - 1935



© B.A.R.H.

BYRD ANTARCTIC EXPEDITION II
LITTLE AMERICA, ANTARCTICA,
SECOND CANCELLATION
MAIL

*Byrd
Little America
1935*





— DEEP FREEZE —

VIA AIR MAIL

Mr. William V. Stockdale
92-16 Whitney Avenue
Elmhurst 73, L. I. N. Y.



VIA AIR MAIL

Mr. William V. Stockdale
E. F. Hutton & Company
Sixty-One Broadway Room 1224
New York 6, New York.



VIA AIR MAIL

m 1224



Christchurch
27 November 1968

Commander F.G. Dustin
Dustin Trans-Polar Flight
18 Tremont Street
Boston, Mass. 02108

Dear Commander Dustin:

There was insufficient time to off load and stamp the large amount of philatelic mail from your Trans-Polar flight during its scheduled fuel stop at McMurdo.

**DUSTIN TRANS-POLAR FLIGHT
AROUND THE WORLD
IN COMMEMORATION OF
REAR ADMIRAL
RICHARD E. BYRD**

1888-1957



EXPLORER & STATESMAN



MULTUM FECIT IN TEMPORE BREVI



Order Before Oct. 15

Official engraved CACHET honoring
Admiral Byrd

Limited number of covers will be carried on the Dustin TRANS-POLAR FLIGHT around the world in commemoration of the late explorer, leaving Boston Nov. 8, 1968. Cancelled in Boston, backstamped near North and South Poles, and again in Boston. Proceeds to Byrd Polar Center.
Collectors: Send name, address and \$3.00 for each cover, check of money order, to

Commander Fred G. Dustin
Admiral Richard E. Byrd Polar Center
18 Tremont Street, Boston, Mass. 02108

AFTER 5 DAYS, RETURN TO



VIA AIR MAIL

A. L. BELLOWS

BRUSHTON,

N. Y.

Cover No. 106

PEORIA WELCOMES VISIT OF
REAR ADMIRAL P. E. BYRD.

APR 30 1931



VIA AIR MAIL

Floyd G. Frederickh,
130 Main St.,
Souderton, Pa.

Eugene R. Beil

Bernt Balchen
Visite Teaneck, N.J.
Dec. 20, 1930

Bernt Balchen



VIA AIR MAIL

WILLIAM W. SMITH
1294 PUTNAM AVENUE
BROOKLYN, N. Y.

28-

POLAR

TO
BOSTON, MASS. - 1930

BRUSHTON,

N. Y.

ADMIRAL BYRD

50



ADMIRAL BYRD

50



BYRD



PIONEER AVIATOR



Dear Miss Beary: Please excuse this but I run out
of stationery after writing over 200 letters. I crossed
"Byrd Antarctic Expedition III" because it is not right.
"U.S. Antarctic Service" is right.

I'll be writing from somewhere in Antarctica.
If you have time please drop me a line. Thanks.

J. Collier

Tech. Sgt. J. Collier
~~BYRD ANTARCTIC EXPEDITION III~~
U.S. Marine Corps.

THIS COVER POSTED

FROM THE

U.S.S. "NORTH STAR"

WHILE PASSING THRU THE

PANAMA CANAL

ON ITS MISSION WITH THE

U.S. ANTARCTIC SERVICE



Miss Anne Beary
R.D. 1
Phoenixville, Pa., USA.

West Base,
Jan. 11, 1940.

Dear Miss Beary: Lack of time (and stationary) prevents me from giving you more information about our trip to the West Base. But I must say that the sights are beautiful and the conditions have been ideal. Leaving for the East Base in fourteen days.

Sincerely yours,

Zadik Collier

ZADIK COLLIER, Tech. Sgt. USMC.
Chief Machinist,
East Base.

U. S. ANTARCTIC SERVICE
~~BYRD ANTARCTIC EXPEDITION III~~

THIS COVER POSTED

ABOARD THE

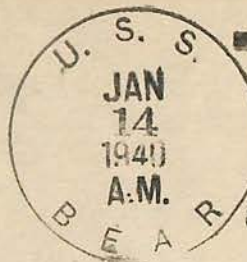
U.S.S. "NORTH STAR"

ON THE DAY OF ITS ARRIVAL AT

~~LITTLE AMERICA~~
"WEST BASE"

Date: January 11, 1940.

Zadik Collier
Tech. Sgt. U.S.M.C.



Miss Anne Beary
R.D.1
Phoenixville, Pa., USA.

Greetings from Antarctica. Leaving with
Adm. Byrd for the East Basin in Feb.
Temp 12° F. (not bad)
Best wishes.

Z.C.

Encs.

Mr. J. Bodner, Jr.,
U.S.S. Sumner,
% Postmaster
New York, N.Y.





LITTLE
AMERICA

Frank Aplan

Fort Pierre

South Dakota

W. Waller
U.S. Antarctic Service

Dear Miss Beary:

Emergency evacuation of
East Base made it impossible to use
the envelope for original purpose.

I do hope that you will find
this satisfactory.

Sincerely yours.
Zadik Collier
USO.C.

U. S. ANTARCTIC SERVICE
~~U.S. ANTARCTIC EXPEDITION III~~

THIS COVER POSTED AT

~~LITTLE AMERICA~~

EAST BASE
PALMERLAND



EVACUATION

EAST BASE



~~ON THE FIRST ANNIVERSARY OF THE~~

Emergency.

~~EXPEDITION'S ARRIVAL AT THIS~~

On Evacuation Day.

ANTARCTIC BASE

Date: *March 22, 1941*
Zadik Collier, M.J. Sgt. USMC.

Miss Anne Beary

R.D. 1

Phoenixville, Pa., USA.

50th ANNIVERSARY
FIRST FLIGHT OVER SOUTH POLE



AUSTRALIAN ANTARCTIC TERRITORY

AUSTRALIAN ANTARCTIC TERRITORY
50th ANNIVERSARY FIRST FLIGHT OVER SOUTH POLE
55c



AUSTRALIAN ANTARCTIC TERRITORY
50th ANNIVERSARY FIRST FLIGHT OVER SOUTH POLE
20c



UNITED STATES ANTARCTIC SERVICE
U. S. S. BEAR (FLAGSHIP)

March 22, 1941.

Dear Miss Beary: Thanks for your letter of June 17, 1940. I am sorry that I could not answer sooner, but as you know it has been impossible. However there are two covers that I know you will like, the evacuation cover, which by the way came as a surprise, and the flight covers. I placed the envelopes in the plane when we assembled it and took them off after the last flight of evacuation. As I can say they were over many miles of country on Palmerland, Alexander Is., Weddel Sea and coast of Antarctica to about 80° Long. West.

Best wishes and kindest regards.

Sincerely,
Zadik Collins
M. T. Sgt. U. S. M. B.

M. J. Sgt. G. Callie,
M. B. Navy Yard,
Philadelphia, Penna.



EVACUATION

EAST BASE



Miss Lane Beary,
R. D. #1,
Phoenixville, Penna.

OPERATION DEEP FREEZE

New Zealand traditionally has been the jumping off point for U.S. expeditions to the frozen continent at the bottom of the world. The U.S. Navy maintains a small year-round facility at Christchurch's International Airport. From there, personnel and supplies are readied for the 2,300 mile flight south to Williams Field, the air facility located eight miles from McMurdo Station.

U.S. Air Force C-141 Starlifter aircraft fly men and women for the American and New Zealand scientific programmes to the ice during the early part of the operating season. Once on the ice, people and supplies are routed to their destinations. A small group of New Zealand Army cargo specialists work with members of the DEEP FREEZE transportation department both in New Zealand and in the Antarctica.

During the early season, while the surface of the annual ice runway is still firm, C-130 Hercules aircraft from the Royal New Zealand Air Force fly several "Ice Cube" flights to Williams Field. Cargo for the New Zealand Antarctic Research Programme (NZARP) conducted primarily at New Zealand's Scott Base about three miles from McMurdo, is carried on the ships of the U.S. Military Sealift Command which load cargo at Lyttelton Harbour. These ships arrive in Winter Quarters Bay at McMurdo Sound, by mid-January.

New Zealand cargo also is transported south on the U.S. Navy LC-140 Hercules planes during the latter part of summer. By

this time, the ice runway begins to deteriorate and ski-equipped aircraft, operating off prepared snow skiways, must be utilised. The Navy's LC-130's and UH-1N helicopters are constantly in flight transporting American and New Zealand scientists and supplies to remote field camps in such areas as the Ross Ice Shelf and Dry Valleys.

Each year members of the American wintering party spend seven days enjoying the warm summer climate of New Zealand before settling in for their long and arduous winter tasks. Many of the sailors eagerly take advantage of "Project Kia Ora," a programme established by the U.S. Navy through the co-operation of the New Zealand people. Those participating in Kia Ora are placed in homes of New Zealanders who share similar interests. Many have taken advantage of the programme simply to learn more about the daily life of the New Zealand people, and to share a part of their own life with them.

This cover was carried on the third mid-winter flight to McMurdo Station but the first to the South Pole Station. All three flights have been under the command of Lt. Col. J. M. Galyen, USAF. The flight which took 15.3 hours was refuelled three times in the air by support tankers of the USAF.

While over the South Pole the ground temperature was 82deg. F below zero. A total of 13,029 lbs. of equipment, fresh supplies and mail was dropped at McMurdo Sound and a further 2,760 lbs. at the South Pole. This was the first mail that the winter party had received for 4 months.



Delayed one day
late arrival of
refuelling aircraft



Flown from Christchurch International Airport to McMurdo Station then onto the South Pole and back to Christchurch, in a C141 Starlifter of No. 63 Mil Aft Wg (MAC). Flight time 15.3 hrs Cargo dropped 15,989 lbs.

Aircraft Commander Lt Col J. M. Galyen USAF
Pilots Maj R. N. Tittenhofer USAF
Maj L. J. Danielsen USAF
Capt R. L. Skoog USAF

Jm Galyen
Lt Col J. M. Galyen USAF
Aircraft Commander.

Military Covers
Operation Deep Freeze
Christchurch

W. W. Jones
Box 1191
Crestline, Calif.
92325

DEEP
FREEZE



THE WORLD'S SOUTHERNMOST AIRLINE

Flown from McMurdo Station
to
SOUTH POLE STATION

aboard VXE-6 aircraft
on NOV 17 1975

A/C *W. W. Jones*
21st Year of
Antarctic operations



Meteorologist-in-Charge
USARP, SOUTH POLE STATION
Fleet Post Office
San Francisco, Calif. 96692

Nicholas J. Barnett



RONALD BLAIR
P.O. BOX 381
UPPER DARBY, PA 19082

4-



VIA AIR MAIL
CORREO AEREO

ICE
LAT 71° 52' N
166 20

Robert Gill
409 Main Street
Williamsport, Pa. USA.

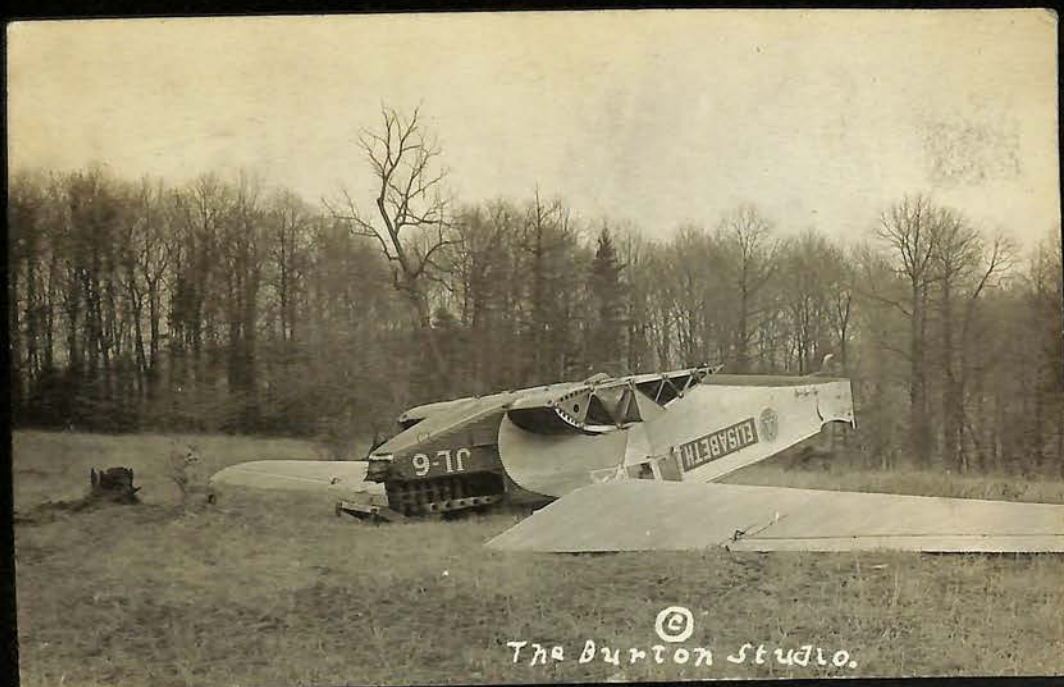
PAR
AVION



VIA
CORR

Robert Gill
409 Main Street
Williamsport, Penna USA.

PAR
AVION



33/1

Hubert Wilkins

ADELAIDE
4 - 1
12 FEB
1908
SOUTH AUST



Sir Hubert Wilkins
of Elder Smith & Coy
Currie Street
Adelaide
South Aust.

Plane wrecked near Miola, Monday April 10, 1922 on ~~Cosgrove~~ ^{COSGROVE} farm.
Pilot was Slim Lewis, flying ship for Capt. Ronald Amundsen. Plane
was a Junkers JL-6 named "Elesibeth".

The following is from a Pittsburgh paper and it was printed with the photograph.

"The Elizabeth"., After it landed upside down in a field in the wilds of Clarion County.

Capt. Roald Amundsen, forced to land near Clarion Tuesday when his monoplane was partly wrecked, arrived in Pittsburgh late yesterday. The artic explorer was flying from New York to Seattle, Wash., when Tuesday's hail storm forced him to land. Leaving Clarion early yesterday the train on which the explorer and his party were traveling was held up by a wreck, preventing them from getting anything to eat. Capt. Amundsen said he was going back to New York and that the accident would not prevent him from carrying out his exploration program. From Seattle the party had intended to go by boat to Alaska. Lieut. H. U. Gade of New York and J. Ondell accompanied the captain to Pittsburgh. The other members of the party, H. T. Lewis of Bellefonte and E. Buhl, remained at Clarion. Lewis, who was slightly hurt, will be all right in a day or two, the captain said. One wing of the plane was badly damaged and it will take about 10 days to repair it. A relief airplane from the government field at Bellefonte went to Clarion to render assistance.



