



548



549



550



537



538



539



540



541



542



543



544



545



546

NK



547



548



549



550



551



552



553



554



555



556



557



558



559



575



576



577



581



582



583



584



585



586



587

H



588



589



590



591



595



597



598



599



600



601



602



603



604



605



606



597



597A



598



600



601



603



604



605



606



611



610



612



614



615



616



617



618



619



620



621



622



623



627



628



629



631



632



633



634



635



636



637



638



639



640



641



642



643



644



645



646



647



648



649



650



653



651



654



655



656



657



658



659



660



661



662



663



664



665



666



667



668



680



682



681



683



684



685



686



687



688



689



690



692



693



694



695



696



697



698



699



700



701



702



703



704



705



706



707



708



709



710



711



712



713



714



715



716



717



718



719



720



721



722



723



724



725



726



727



728



729



732



734



733



736



737



738



739



730a



730



731a



731



735a



735



735a



740



741



742



743



745



744



746



747



748



749

UNDER AUTHORITY OF
JAMES A. FARLEY, POSTMASTER GENERAL.

PRINTED BY THE TREASURY DEPARTMENT,
BUREAU OF ENGRAVING AND PRINTING.



IN COMPLIMENT TO THE AMERICAN PHILATELIC SOCIETY,
FOR ITS CONVENTION AND EXHIBITION.

ATLANTIC CITY, NEW JERSEY, AUGUST 1934.
PLATE NUMBER 21303

750

UNDER AUTHORITY OF
JAMES A. FARLEY, POSTMASTER GENERAL.

PRINTED BY THE TREASURY DEPARTMENT,
BUREAU OF ENGRAVING AND PRINTING.



IN COMPLIMENT TO THE TRANS-MISSISSIPPI
PHILATELIC EXPOSITION AND CONVENTION.

OMAHA, NEBRASKA, OCTOBER, 1934.
PLATE NUMBER 21341

751



752



754



753



755



756



760



763



765



757



758



759



761



762



764



771



752



752



752



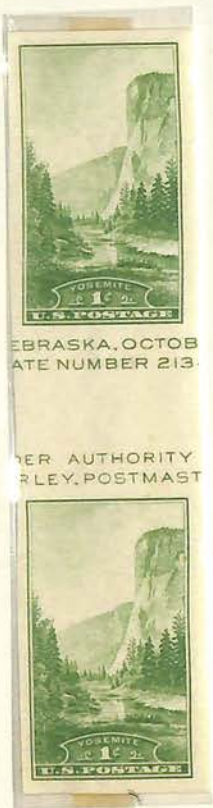
752



766a



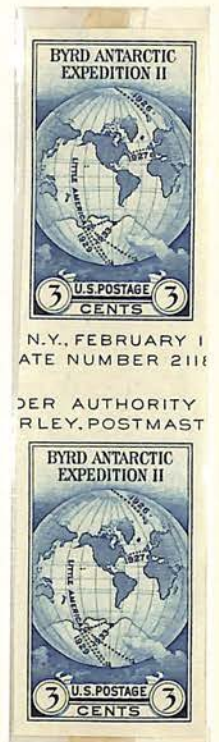
767a



769a



770a



768a



766a



767a



768a

PRINTED BY THE TRADING BUREAU OF ENGRAVING

TRANS-MISSISSIPPI EXHIBITION AND CONVENTION,

BER, 1934.
41

OMAHA, NE
PL.

OF
TER GENERAL

IN COMPLIMENT TO THE PHILATELIC EXHIBITION

ASURY DEPARTMENT, DIVISION OF PRINTING

UNDER AUTHORITY OF
JAMES A. FARLEY, POSTMASTER GENERAL

7690

PRINTED BY THE TRADING BUREAU OF ENGRAVING

PHILATELIC EXHIBITION

ERSEY, AUGUST 1934.
BER 21303

ATLANTIC CITY, NEW J
PLATE NUM

AUTHORITY OF
POSTMASTER GENERAL.

IN COMPLIMENT TO THE PHILATELIC EXHIBITION

DEPARTMENT, DIVISION OF PRINTING

UNDER AUTHORITY OF
JAMES A. FARLEY, POSTMASTER GENERAL

7700



772



773



774



775



776



777



778



782



783



784



785



786



787



788



789



790



791



792



793



794



795



796




798

UNDER THE AUTHORITY OF
JAMES A. FARLEY, POSTMASTER GENERAL.

IN COMPLIMENT TO THE
43RD ANNUAL CONVENTION OF THE
SOCIETY OF PHILATELIC AMERICANS.

PRINTED BY THE
TREASURY DEPARTMENT,
BUREAU OF ENGRAVING AND PRINTING.



ASHEVILLE, N. C., AUGUST 26-28, 1937.
PLATE NUMBER 21696

797



799



800



801



802



803



804



805



806



807



808



809



810



811



812



813



814



815



816



817



818



819



820



821



822



823



824



825



826



827



828



829



830



831



832



833



834



806

900



835



836



837



838



839



840



841



842



843



844



845



846



847



848



849



850



851