

# POSTAGE

## General Issues

Printed by Rawdon, Wright, Hatch & Edson

1847

Imperforate



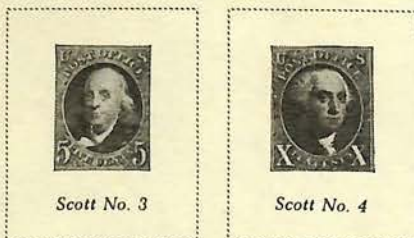
Scott No. 2

1875

Reproductions of Issue of 1847

Produced by the U. S. Bureau of Engraving and Printing

Imperforate



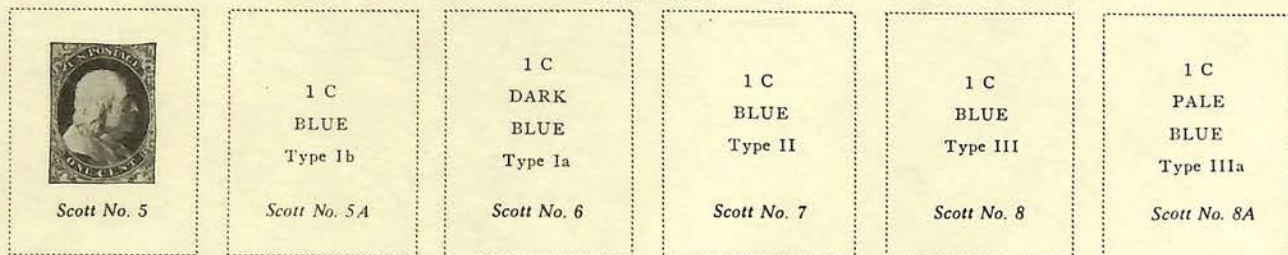
Scott No. 3

Scott No. 4

Printed by Toppan, Carpenter, Casilear & Co.

1851-56

Imperforate



Scott No. 5

Scott No. 5A

Scott No. 6

Scott No. 7

Scott No. 8

Scott No. 8A



Scott No. 9  
6500

725

855



Scott No. 13

Scott No. 14

Scott No. 16



# POSTAGE

Printed by Toppan, Carpenter & Co.

1857-61

Perforated 15

Same Designs as  
1851-56 Issues  
1 C  
BLUE  
Type I  
Scott No. 18

1 C  
BLUE  
Type Ia  
Scott No. 19

1 C  
BLUE  
Type II  
Scott No. 20

#28 - 12002 \*



1 C  
BLUE  
Type III  
Scott No. 21



1 C  
BLUE  
Type IV  
Scott No. 23



24

5 C  
BRICK  
RED  
Type I  
Scott No. 27

5 C  
RED  
BROWN  
Type I  
Scott No. 28

5 C  
INDIAN  
RED  
Type I  
Scott No. 28A

5 C  
BROWN  
Type I  
Scott No. 29

5 C  
BROWN  
Type I  
Scott No. 30



10 C  
GREEN  
Type I  
Scott No. 31

10 C  
GREEN  
Type II  
Scott No. 32

10 C  
GREEN  
Type III  
Scott No. 33

10 C  
GREEN  
Type IV  
Scott No. 34



525



Scott No. 37



Scott No. 39



# POSTAGE

Printed by the National Bank Note Co.

1861

First Issue

Perforated 12

Designs of  
Second Issue

1 C

INDIGO

*Scott No. 55*



5 C

BROWN

*Scott No. 57*



*Scott No. 59*

24 C  
VIOLET

*Scott No. 60*

30 C  
RED ORANGE

*Scott No. 61*

90 C  
DULL BLUE

*Scott No. 62*

10 C  
DARK GREEN

*Scott No. 62 B*



# POSTAGE

1861-62  
Second Issue



mH



Scott No. 64



mH

3 C  
LAKE

Scott No. 66



mH



1861-66



3 C  
SCARLET

Scott No. 74



mH





# POSTAGE

Printed by the National Bank Note Co.

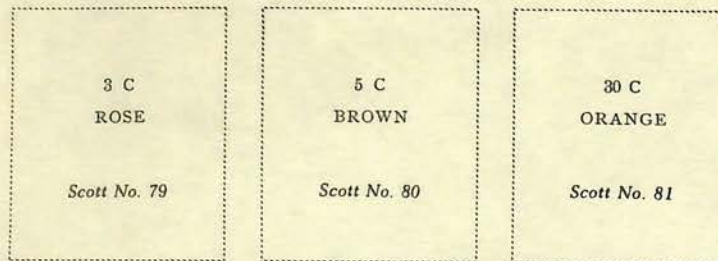
1867

Same Designs as 1861-66 Issues

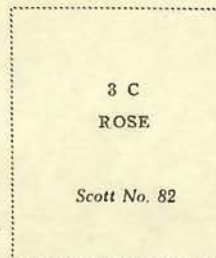
Embossed with Grills of Various Sizes

Grill with Points Up

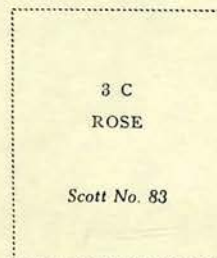
A. Grill covering the entire stamp



B. Grill measuring about 18x15 mm.

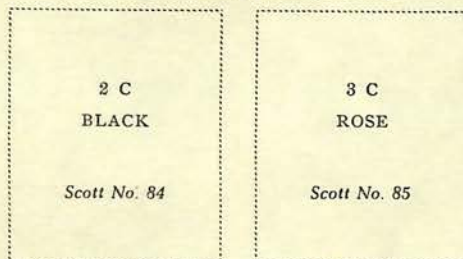


C. Grill measuring about 13x16 mm.

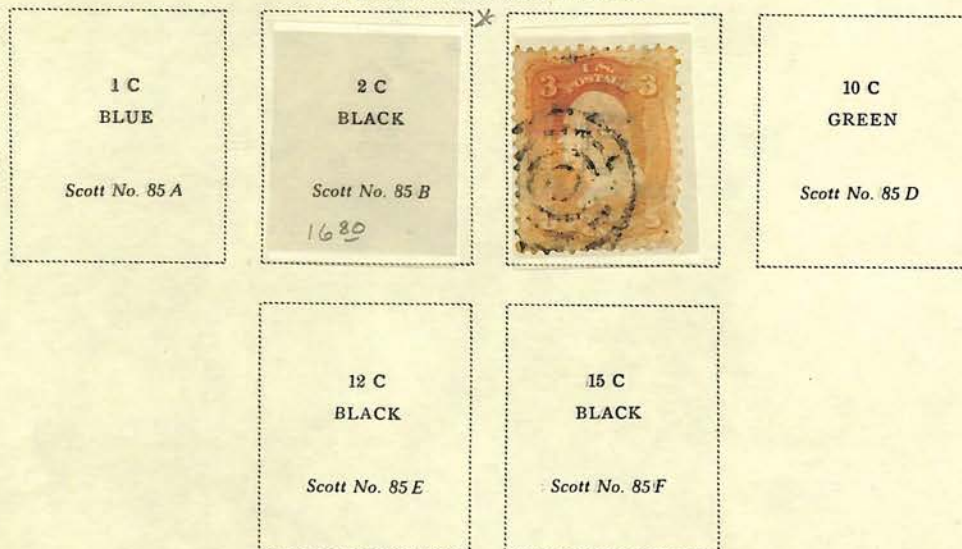


Grill with Points Down

D. Grill measuring about 12x14 mm.



Z. Grill measuring about 11x14 mm.



2  
400  
cat 96



# POSTAGE

Printed by the National Bank Note Co.

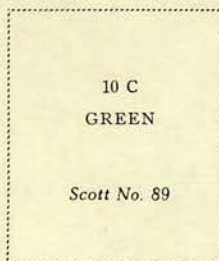
1867

Same Designs as 1861-66 Issues

Embossed with Grills of Various Sizes

Grill with Points Down

E. Grill measuring about 11x13 mm.



F. Grill measuring about 9x13 mm.





# POSTAGE

Printed by the National Bank Note Co.

1869

With Grill



# POSTAGE

## Government Re-Issues and Special Printings

1875

Re-Issues of Issue of 1869

Without Grill



3 C  
BLUE

Scott No. 125



24 C  
GREEN  
AND VIOLET

Scott No. 130



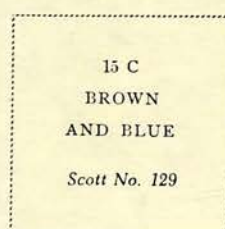
15 C  
BROWN  
AND BLUE

Scott No. 129



30 C  
BLUE AND  
CARMINE

Scott No. 131



90 C  
CARMINE  
AND BLACK

Scott No. 132

1880

Special Printing of Issue of 1869

Soft Porous Paper

1 C  
BUFF

Scott No. 133

Heavy Value

97  
5  
3500



# POSTAGE

Printed by the National Bank Note Co.

1870-71

With Grill



Scott No. 134



Scott No. 137



Scott No. 138



Scott No. 139



Scott No. 140



Scott No. 141



Scott No. 142



Scott No. 143



Scott No. 144



# POSTAGE

Printed by the National Bank Note Co.

1870-71

Without Grill



mt



mt



mt



mt



mt



# POSTAGE

Printed by the Continental Bank Note Co.

1873

Same designs as issue of 1870-71 but with secret marks on the values from 1c to 15c



MNH



MH



MNH



MNH



MNH



MNH



M



MNH



MNH

1875



MINT



MINT - L-14



## POSTAGE

Printed by the American Bank Note Co.

1879

### Soft Porous Paper



1882

 $m +$ 

1881-82

Designs of Issue of 1873 Re-engraved



m 12

m 14

MLH

m 17

1883



312

315



# POSTAGE

## Special Printings

Printed by the American Bank Note Co.  
1880

Special Printing of Issues of 1873 and 1875

Soft Porous Paper  
Without Gum

1 C  
DARK  
ULTRAMARINE

Scott No. 192

2 C

BLACK BROWN

Scott No. 193

2 C

SCARLET  
VERMILION

Scott No. 203

3 C

BLUE GREEN

Scott No. 194

5 C

DEEP BLUE

Scott No. 204

6 C

DULL ROSE

Scott No. 195

7 C

SCARLET  
VERMILION

Scott No. 196

10 C

DEEP BROWN

Scott No. 197

12 C

BLACKISH  
PURPLE

Scott No. 198

15 C

ORANGE

Scott No. 199

24 C

DARK VIOLET

Scott No. 200

30 C

GREENISH  
BLACK

Scott No. 201

90 C

DULL CARMINE

Scott No. 202

1882

Special Printing of Issue of 1882



1883

Special Printing of Issue of 1883

2 C

PALE  
RED BROWN

Scott No. 211 B

4 C

DEEP  
BLUE GREEN

Scott No. 211 D



# POSTAGE

Printed by the American Bank Note Co.

1887



1888



1890-93





# POSTAGE

Printed by the American Bank Note Co.

Columbian Exposition

1893



Scott No. 243



Scott No. 244



Scott No. 245



# POSTAGE

Unwatermarked

Engraved

1894





# POSTAGE

Watermarked USPS

1895



MNH



MH



MH



MNH



MH



MNH



MNH



MNH



MNH



MNH



450.00



MH

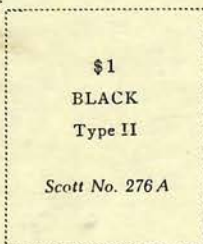


MNH

273-IMPERF PAIR  
SCARCE SEE DIE PHOTO-IN CAT 258-P



MH



Scott No. 276 A



MNH



MNH



# POSTAGE

Watermarked USPS

1898



M-106





# POSTAGE

Watermarked USPS  
1898

## Trans-Mississippi Exposition Issue



MNH



MNH



MH

\*



MH

\*



MH

\*



MNH

\*



\*



MNH

\*



Scott No. 293



# POSTAGE

Watermarked USPS

1901

Pan-American Exposition Issue



MH



MH



MNH



MNH



MH



MH



# POSTAGE

Watermarked USPS

1902-03

Perforated 12



1906-08

Imperforate



4209

94

19

4375 50



# POSTAGE

Watermarked USPS

1904

## Louisiana Purchase Exposition



MNH



MNH



MNH



MH



MNH

1907

## Jamestown Exposition



MNH



MNH



MNH

1909

Perforated 12

## Alaska-Yukon Pacific Exposition

## Lincoln Memorial

## Hudson-Fulton

On Bluish Paper



Imperforate



99

15

673 25



# POSTAGE

Watermarked USPS

1908-09

Perforated 12



Watermarked USPS

1910-11

Perforated 12



94  
21  
25  
1234



# POSTAGE

Watermarked USPS

1908-09

Imperforate



MNH

MNH

MNH



MNH

MNH

## COIL STAMPS

1908-10

Perforated 12 Horizontally



MNH

MNH

MNH

MNH

1909

Perforated 12 Vertically



MNH

MNH

MNH



MNH



# POSTAGE

## Watermarked USPS

1910-11

Imperforate



MNH

MH

### COIL STAMPS

Perforated 12 Horizontally



MNH

MNH

Perforated 12 Vertically



MNH

MH

3 C  
DEEP  
VIOLET

Scott No. 389

1910-13

Perforated 8½ Horizontally



MNH

MNH

Perforated 8½ Vertically



1 C  
GREEN

Scott No. 392  
200

MNH

MH

MNH

MNH

MH

MH



# POSTAGE

Watermarked USPS

1913

## Panama-Pacific Exposition

Perforated 12



mnH



mnH



mnH



mnH



1914-15

Perforated 10



mnH



mnH



mnH



4  
820.00  
00



# POSTAGE

Watermarked USPS

1912-14

Perforated 12



MNH



MNH



MH

Imperforate



MNH



MNH

COIL STAMPS

Perforated 8½ Horizontally



MH



MNH

Perforated 8½ Vertically



MNH



MNH

1912-14

Perforated 12



MH



MNH



MNH



MNH



MNH



MH



MH



MH

Watermarked USPS

1912



MH



MH



# POSTAGE

Watermarked USPS

1914-15

Perforated 10



Flat Plate Printing  
1915

Watermarked USPS

Perforated 10 \*



mnh

Watermarked USPS

Perforated 11



mnh



# POSTAGE

Watermarked USPS

1914-16

COIL STAMPS

Flat Plate Printing

Perforated 10 Horizontally



MNH Perforated 10 Vertically MNH



MNH

MNH

MNH

MNH

MNH

Rotary Press Printing

Perforated 10 Horizontally



MNH

Type I

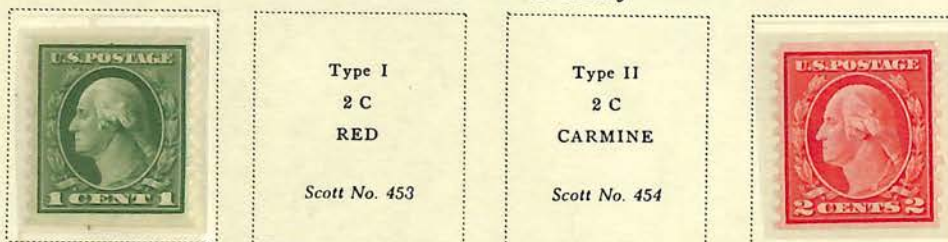
2 C

RED

Scott No. 449

MNH

Perforated 10 Vertically



MNH

Type I

2 C

RED

Scott No. 453

Type II

2 C

CARMINE

Scott No. 454

MNH



MNH

Imperforate MNH

MNH



MNH



# POSTAGE

Unwatermarked

1916-17

Perforated 10





# POSTAGE

Unwatermarked

1916-17

Imperforate



MNH



MNH

Type Ia  
2 C  
CARMINE

Scott No. 482A  
1.45



MNH

Type II  
3 C  
VIOLET

Scott No. 484

Rotary Press

COIL STAMPS

1916-22

Perforated 10 Horizontally



MNH

Type II  
2 C  
CARMINE

Scott No. 487



MNH



MNH

Perforated 10 Vertically



MNH

Type II  
2 C  
CARMINE

Scott No. 491



MNH



MNH



MNH



MNH



MNH



MNH



# POSTAGE

Flat Plate Printing

Unwatermarked

1917-19

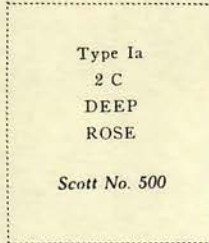
Perforated 11



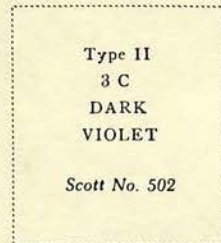
MNH



MNH



MNH



MNH



MNH



MNH



MNH



MNH



MNH



MNH



MNH



MNH



MNH



MNH



MNH



MNH



MNH

#505



MNH



MNH

9.11

2.1

52165



# POSTAGE

Watermarked USPS  
1917

Flat Plate Printing

Perforated 11



1919-21 MNH

Unwatermarked

Rotary Press Printing

Perforated 11x10



MNH

Type II  
2 C  
CARMINE  
ROSE  
Scott No. 539



MNH



MNH

Perforated 10x11



MNH

Perforated 10



MNH

Perforated 11

1 C  
GREEN

Scott No. 544

Perforated 11



MNH



MNH

1918-20

Flat Plate Printing



MNH



MNH



MNH

99

11

1399 35



# POSTAGE

Unwatermarked

1918-20

Offset Printing

Perforated 11

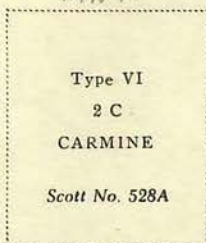


*MNH*

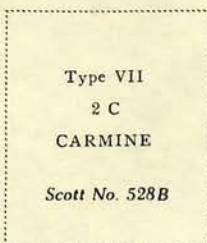


*MNH*

Type Va  
2 C  
CARMINE  
Scott No. 528



Type VI  
2 C  
CARMINE  
Scott No. 528A



Type VII  
2 C  
CARMINE  
Scott No. 528B



*MNH*

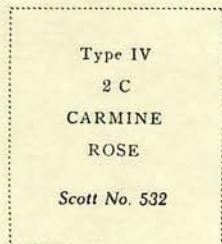


*MNH*

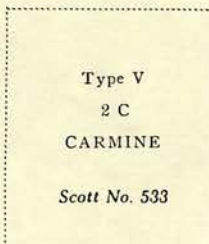


*MNH*

Imperforate



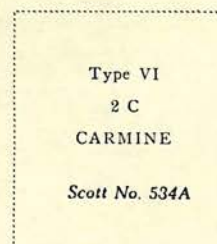
Type IV  
2 C  
CARMINE  
ROSE  
Scott No. 532



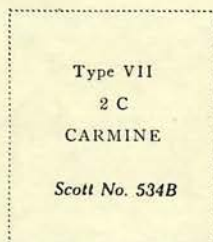
Type V  
2 C  
CARMINE  
Scott No. 533



*MNH*



Type VI  
2 C  
CARMINE  
Scott No. 534A



Type VII  
2 C  
CARMINE  
Scott No. 534B



*MNH*

1919

Perforated 12½



*MNH*



# POSTAGE

Unwatermarked

1919

Flat Plate Printing

Perforated 11

## Victory Issue



MNH

1920

## Pilgrim Tercentenary



MNH



1923

MNH



MNH

## Harding Memorial

Flat Plate Printing

Perforated 11



MNH

Imperforate



MNH

Rotary Press Printing

Perforated 10



MNH

Flat Plate Printing

Perforated 11

1924

## Huguenot-Walloon Tercentenary



MNH



MNH



MNH



# POSTAGE

Unwatermarked

1922-26

Perforated 11



MNH



MNH



MH



MNH



MH



MNH



MNH



MNH



MH



MH



MH



# POSTAGE

1923-25  
Flat Plate Printing

Imperforate



MNH



MNH



MNH

Rotary Press Printing

Perforated 11x10



MNH



MNH

1923-26

Perforated 10



MNH



MNH



MNH



MNH



MNH



MNH



MNH



MNH



MNH



MNH



MNH

921  
18

27550



# POSTAGE

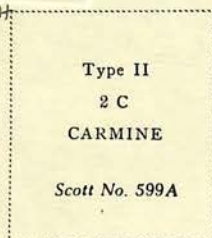
1923-32  
Rotary Press Printing  
COIL STAMPS  
Perforated 10 Vertically



MNH



MNH



MNH



MNH



MNH



MNH



Perforated 10 Horizontally



MNH



MNH



MNH



# POSTAGE

1923-29  
Rotary Press Printing  
COIL STAMPS  
Perforated 10 Vertically

<p>1 C YELLOW GREEN</p>	<p>Scott No. 597</p>	<p>1½ C BROWN</p>	<p>Scott No. 598</p>
---------------------------------	----------------------	-----------------------	----------------------



Type II  
2 C  
CARMINE

Scott No. 599A



10 C  
ORANGE

Scott No. 603

Perforated 10 Horizontally

<p>1 C YELLOW GREEN</p>	<p>1½ C YELLOW BROWN</p>	<p>2 C CARMINE</p>
<p>Scott No. 604</p>	<p>Scott No. 605</p>	<p>Scott No. 606</p>



# POSTAGE

1925  
Flat Plate Printing  
Perforated 11

## Lexington-Concord



MNH



MNH



MNH

1925-28

## Norse-American Centennial



MNH



MNH

## Ericsson Memorial



## Sesquicentennial Exposition



## Burgoyne Campaign



## Vermont Sesquicentennial



## Battle of White Plains



## Valley Forge





# POSTAGE

1926-34  
Rotary Press Printing  
Imperforate



Perforated 11x10½, 10½ x 11



Type II  
2 C  
CARMINE  
Scott No. 634A



m H



10125



# POSTAGE

1929-31  
Flat Plate Printing  
Perforated 11

## Battle of Monmouth



## Hawaii Sesquicentennial



MNH



MNH

Flat Plate Printing  
Perforated 11

## Aeronautics Conference



MNH



MNH

## George Rogers Clark



## Electric Light Golden Jubilee

Flat Plate Printing  
Perforated 11



Rotary Press Printing  
Perforated 11x10½



Rotary Press Coil Stamp  
Perforated 10 Vertically



1520



# POSTAGE

1929

Rotary Press Printing

Perforated 11x10½



*All on page  
MINT never hinged*



# POSTAGE

1930

Rotary Press Printing

Perforated 11x10½



COIL STAMPS

Perforated 10 Vertically



1932

Perforated 11x10½



COIL STAMPS

Perforated 10 Vertically



Perforated 10 Horizontally





# POSTAGE

1929-31  
Flat Plate Printing  
Perforated 11

Sullivan Expedition



Ohio River Canalization



Battle of Fallen Timbers



Massachusetts Bay Colony



Carolina-Charleston



Braddock's Field



Von Steuben



Pulaski



Red Cross



Yorktown





# POSTAGE

1932-33

Rotary Press Printing

Perforated 11x10½

## Washington Bicentennial



## Arbor Day



## 10th Olympic Games



M134

M135

Flat Plate Printing

Perforated 11

## William Penn



## Olympic Winter Games



## Daniel Webster

