



PLENTY  
WORK  
LEISURE &  
HIGH WAGES



ISSUED BY  
THE IMMIGRATION AND TOURIST  
SYDNEY  
AUSTRALIA  
BUREAU

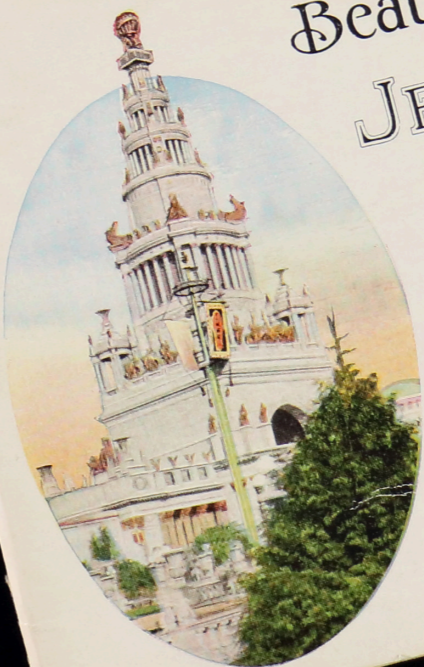


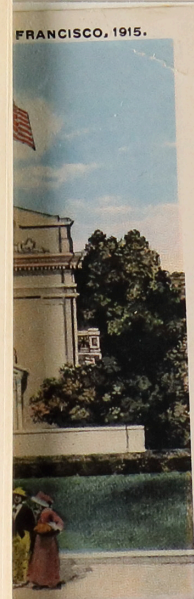
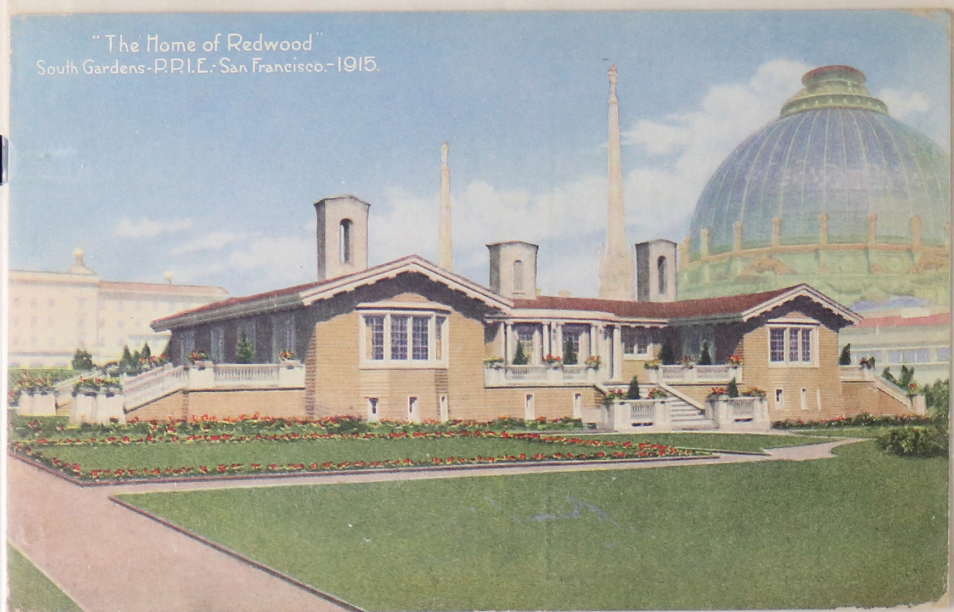
Folder  
No. 97

POSTAGE

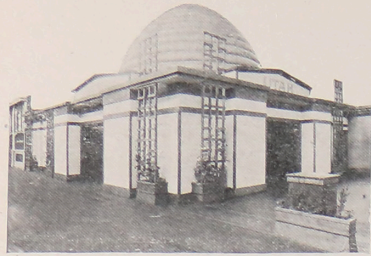
Beautiful Views  
of the  
JEWEL CITY  
(SERIES I)  
SAN FRANCISCO  
1915

STAMP  
ONE CENT





UTAH EDUCATIONAL BOOTH,  
PANAMA-PACIFIC EXPOSITION



The uplifting sense of something to be done that is the common duty, the sharing of the task with others similarly minded, the joy of the common achievement; before this co-operative spirit, elements that have no kinship with man's fatigue or woman's despair yield of their abundance.

# POST CARD

THIS SIDE IS FOR THE ADDRESS

UNITED STATES  
AND CANADA  
ONE CENT  
PLACE  
STAMP HERE  
FOREIGN  
TWO CENTS

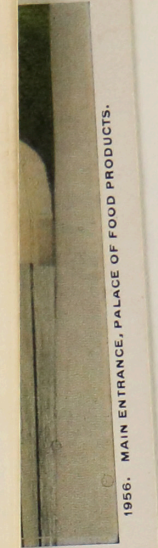




100  
POSTAGE  
UNITED STATES AND POSSESSIONS } 1c  
CANADA MEXICO FOREIGN } 2c  
PLACE HERE



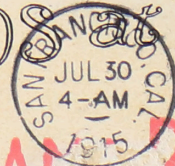
cker,  
St.  
da,  
f.  
35



Peterson  
St.  
Calif-



Folder of Views at the



WORLD'S  
PANAMA-  
PACIFIC  
EXPOSITION  
1915



PANAMA-PACIFIC  
INTERNATIONAL  
EXPOSITION  
SAN FRANCISCO-1915



Mr. S. L. Plumber  
160 East 91<sup>st</sup> St.  
New York City  
New York

Half Dome, Court of Four Seasons - Pan.Pac.Int.Exp. San Francisco.



X-218

Official Souvenir Post Card Album  
PANAMA-PACIFIC  
INTERNATIONAL EXPOSITION  
San Francisco-1915.



M

2502 From



No. 4  
Hand Colored

NUMBER

1354

PANAMA-PACIFIC  
INTERNATIONAL  
EXPOSITION  
SAN FRANCISCO

1915

FEBRUARY 20<sup>TH</sup>  
DECEMBER 4<sup>TH</sup>

SPECIAL  
COUPON BOOK

M

UNDER CONDITIONS PRINTED ON INSIDE BACK COVER,  
ATTACHED COUPONS ARE GOOD FOR ADMISSION ANY  
DAY THE EXPOSITION IS OPEN TO THE PUBLIC.

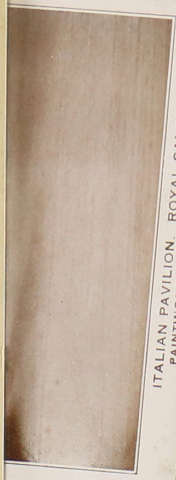
Frank Burt      Chas Moore  
DIRECTOR, DIVISION OF CONCESSIONS AND ADMISSIONS      PRESIDENT

SC 1

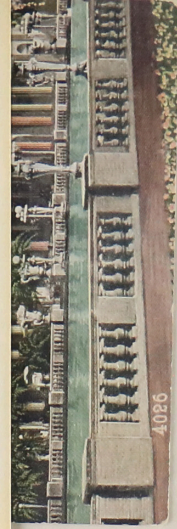
CHIEF OF ADMISSIONS



VISIT OUR SPECIAL EXHIBIT PALACE (OPPOSITE FINE ARTS BLDG.)  
WHERE YOU CAN SEE THE ACTUAL METHOD BY WHICH PURE, SWEET, RICH, FRESH MILK IS EVAPORATED, HERMETICALLY SEALED AND STERILIZED.  
EVERY DETAIL IS CARRIED OUT FAITHFULLY AND ACCURATELY, JUST AS IT IS IN THE 25 GREAT CARNATION MILK CONDENSERIES. YOUR GROCER IS YOUR CARNATION MILK-MAN.



ITALIAN PAVILION, ROYAL SALON  
PAINTINGS BY FERRARI & PIERRETO



4026



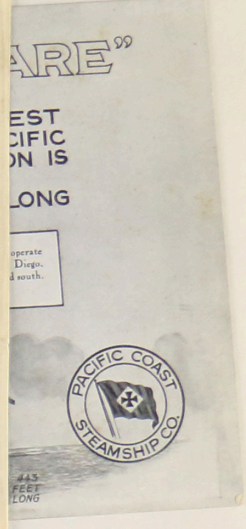
Colonnade, Entrance Court of the University of California  
Painted by J. M. H. San Francisco



4007



X103



ARE  
EST  
ON IS  
LONG

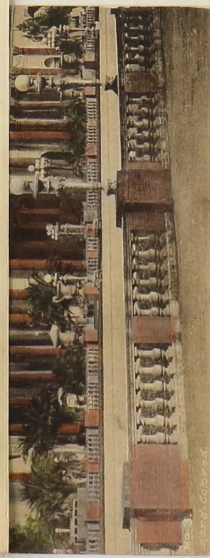
operate  
Diego  
& south.



443  
FEET  
LONG



THE SCALP  
P. P. I. E. 1915

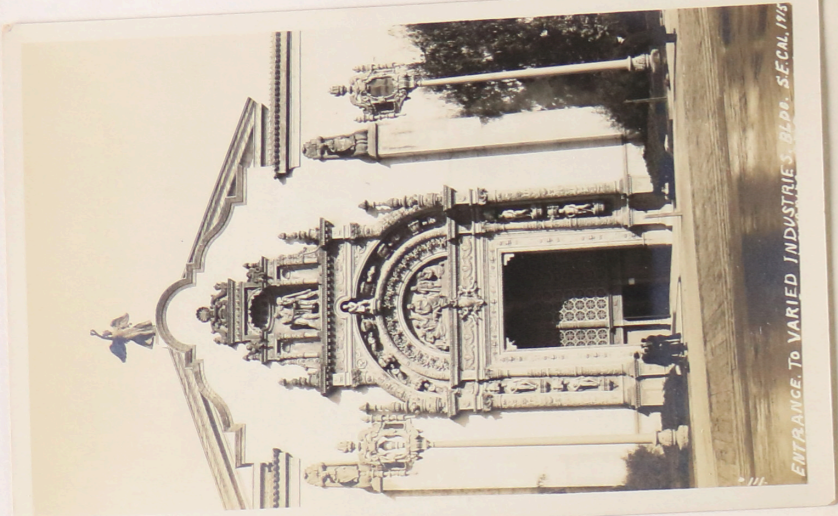


1915



4013



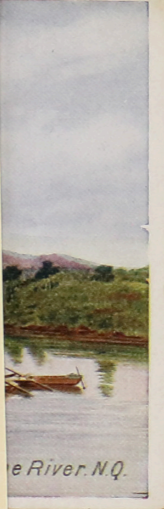


ENTRANCE TO VARIED INDUSTRIES BLDG. - SECAL. 115

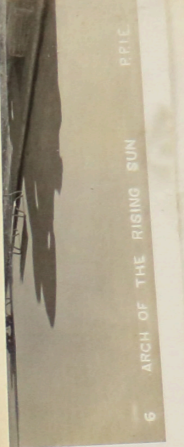


ARCH OF THE RISING SUN  
IN COURT OF THE SUN AND STARS  
5010  
COPYRIGHT 1915 BY PANAMA-PACIFIC  
INTERNATIONAL EXPOSITION CO.

DENMARK BUILDING  
SAN FRANCISCO 1915  
PANAMA-PACIFIC  
INTERNATIONAL EXPOSITION  
KØBENHAVN  
LURBLÆSERNE  
ANTON ROSEN



the River. N.Y.



ARCH OF THE RISING SUN  
PPIC



COURT OF ABUNDANCE  
23



COURT OF THE UNIVERSE  
PPIC

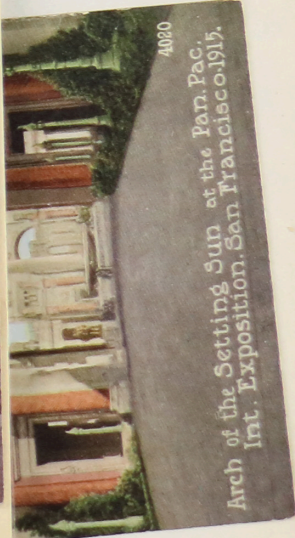


WRITTEN HERE

Ball  
and  
your  
bank  
statement

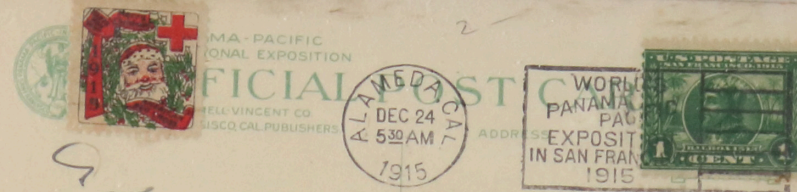
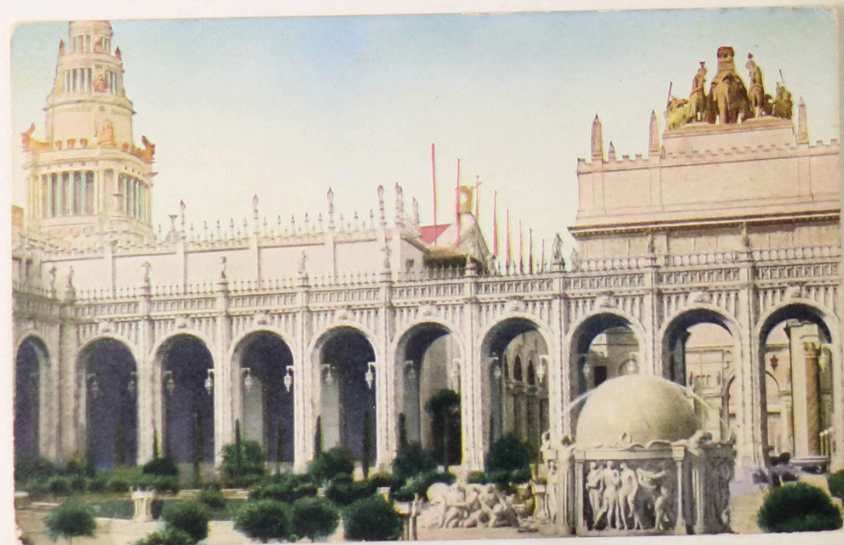
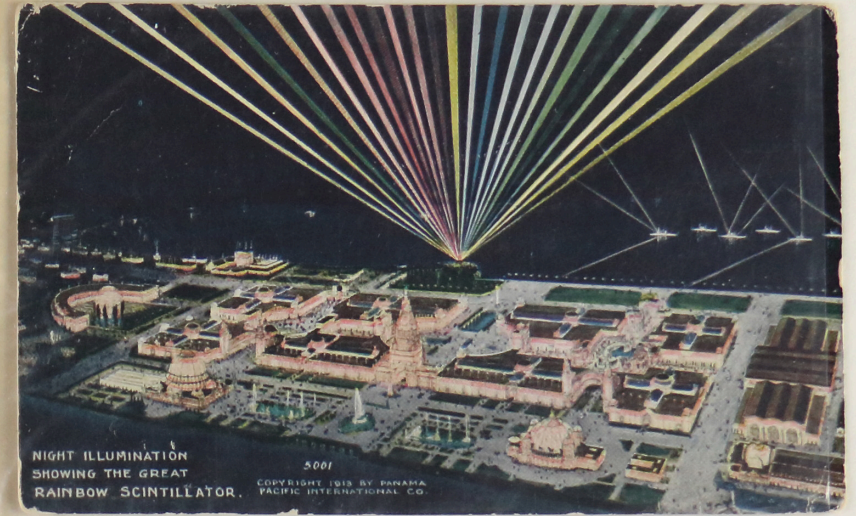


X146



4080

Arch of the Setting Sun at the Pan. Pac.  
Int. Exposition, San Francisco 1915.



*Henry James  
Santa Clara*

*Mrs J. Shaine  
939 Eagle Ave  
Alameda  
Cal*



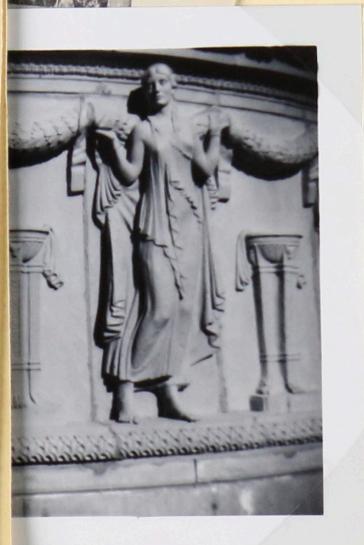


# The People's Palace



Large urns were displayed in assembly - Volunteers from management of the restored facility.

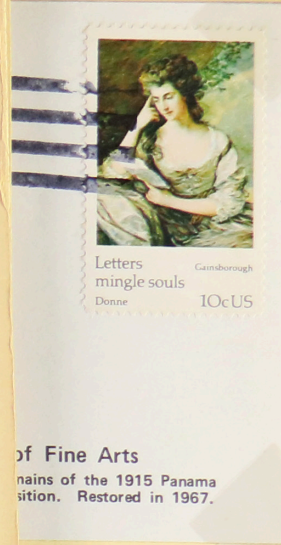
OF FINE ARTS LEAGUE INC.  
3601 Lyon Street • San Francisco 94123



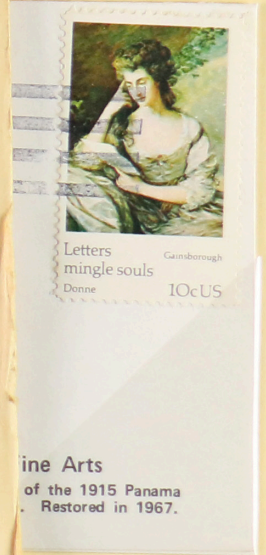
1966



RIGHT 1915

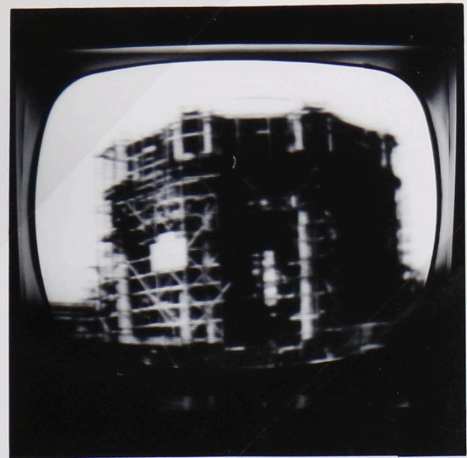


of Fine Arts  
nains of the 1915 Panama  
sition. Restored in 1967.



ine Arts  
of the 1915 Panama  
. Restored in 1967.

RICHARD WOLFFERS, INC.  
127 KEARNY STREET  
SAN FRANCISCO, CA 94108 TEL (415) 781-5127



APRIL 1971

PHOTO TAKEN FROM A MOVIE ON T.V.  
CONSTRUCTION OF THE PALACE OF FINE  
ARTS - 1915



NOV 1966

PICTURE TAKEN ON OPENING DAY OCTOBER-1966  
FOR THE REBUILT PALACE



X-219



agoon.





PACIFIC NOVELTY CARD



CARDWELL-VINCENTE CARD

RICHARD WOLFFERS, INC.  
127 KEARNY STREET  
SAN FRANCISCO, CA 94108 TEL. (415) 781-5127



WORLD EXHIBITION

WORLD EXHIBITION

Peristyle, Palace of Fine Arts at the Pan. Pac. Int Exposition, San Francisco 1915



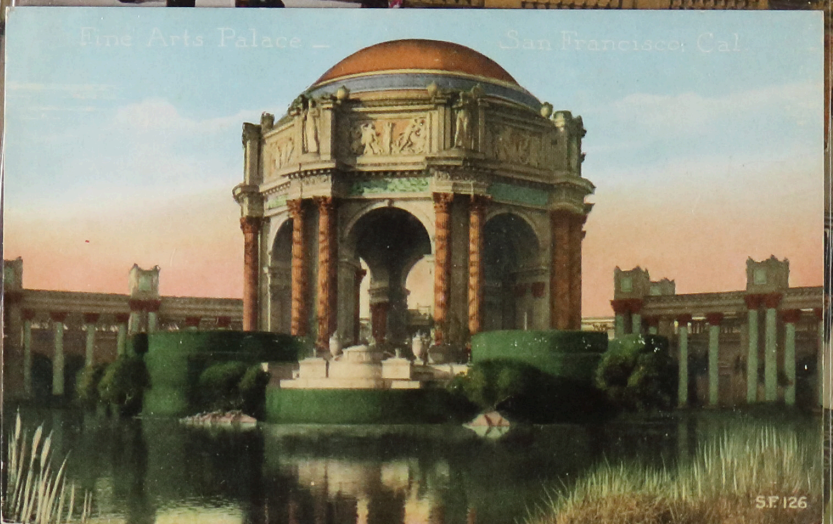
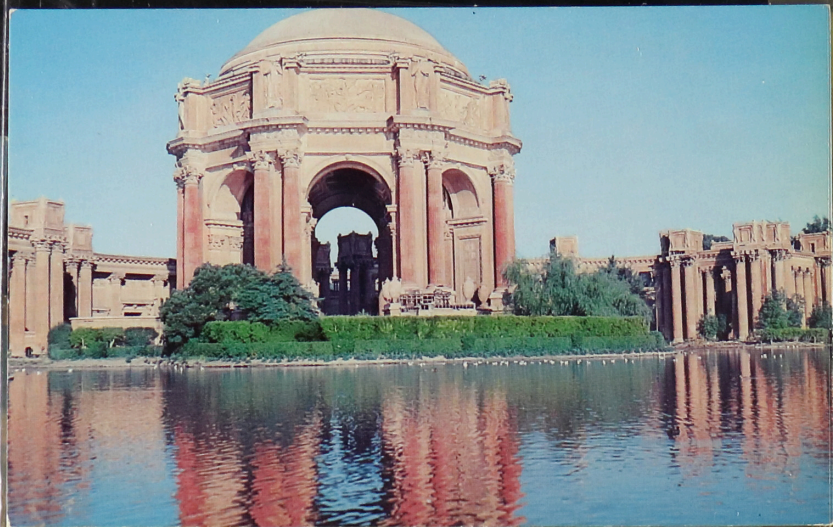
4022

Peristyle, Palace of Fine Arts at the Pan. Pac. Int Exposition, San Francisco 1915



4022

4032



Fine Arts Palace - San Francisco, Cal.

SF 126



Fine Arts Palace, Illuminated at the Pan-Pac. Int. Expo. San Francisco 1915

4010

