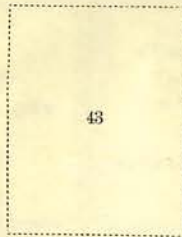
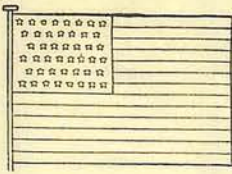
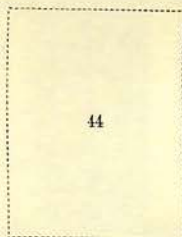


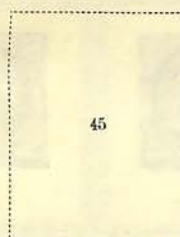
# UNITED STATES



Geo. Washington



Abraham Lincoln



U. S. Grant



Republic in North America, Divisions 48 States, 2 Territories, 1 Federal District, 5 Possessions and 1 Leased Territory. CAPITAL—Washington, D. C.  
 MONETARY UNIT—Dollar=100 Cents.

1847



(28)



1851-56.

1861-67  
67-BUFF



(32d)



(33)



37



38

1857-60

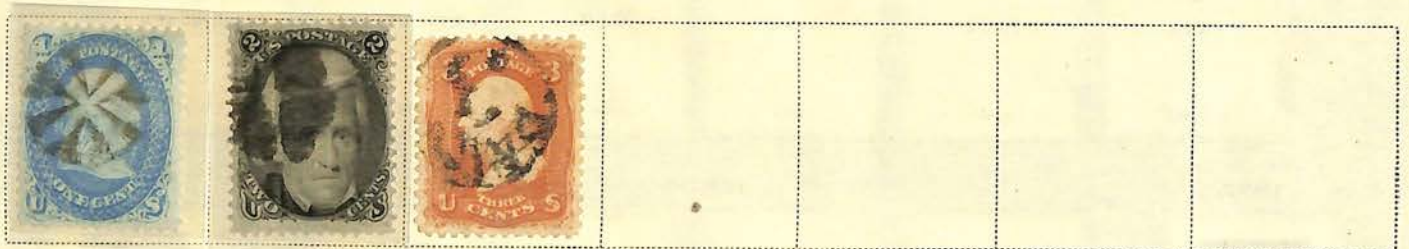
3 C  
DULL RED

(44)

39



1861-67



1869





UNITED STATES

1870-71



1873



1873



1875



1879



1879



1882



1881-82



1887





18870-71 NO GRILLS



#153



#154



#155

CONTINENTAL BANK NOTE COMPANY



1873

#166

PARTIAL PROOF SET



#157



#160



#162



#163



#164



#165



#166

AMERICAN BANK NOTE COMPANY



1879

#191



UNITED STATES

1883

1887

1888



1890-93



Columbian Issue

*w cert*

1893



(210)

1894





UNITED STATES

1894



Watermarked USPS  
1895



277

1898-99

278



Trans-Mississippi Exposition Issue  
1898



NEVER HINGED

Pan-American Exposition Issue  
1901





TRANS-MISSISSIPPI



56,900 STAMPS ISSUED TO  
POSTMASTERS BUT AN  
UNKNOWN QUANTITY WERE  
DESTROYED WHEN THE  
ISSUE WAS RECALLED



Figure 237. "The Vanguard," an engraving by C. O. Murray, after the painting by J. A. MacWhirter, used as the subject for the \$1 stamp. (Howard A. Lederer, Photo).



# UNITED STATES

1902-03



## Louisiana Purchase Issue

1904



## Jamestown Exposition Issue

1907



1908-09





UNITED STATES

1909

Lincoln-Memorial

Alaska-Yukon

Hudson-Fulton



Watermarked USPS

1910



Panama-Pacific Issue

1912-15

1912-15



397 XF90

1912-15

SUPER B





UNITED STATES

Watermarked USPS

1912

Unwatermarked

1916-19



watermarked  
1916-19



1916-19

923-31



58, 582 or 633





# UNITED STATES

1923-26



1922-32



1922-32



1918-20



1919



## Pilgrim Tercentenary Issue

1920



## Harding Memorial Issue

1923



## Huguenot-Walloon Tercentenary Issue

1924



## Sesquicentennial Issue

1926



## Lexington-Concord Issue

1925



## Ericsson Memorial Issue

1926



## Norse-American Issue

1925



## White Plains Issue

1926



## Vermont Issue

1927





INTERNATIONAL PHILATELIC EXHIBITION, OCT. 16<sup>TH</sup> TO 23<sup>RD</sup> 1926  
18773



The International Stamp Exhibition for 1926 was to be held at the Grand Central Palace, New York City, during October, and to add to its interest the Post Office Department was persuaded to install not only a branch post office but to set up a flat plate printing press and actually print some stamps. These White Plains commemoratives being due to appear during that month the Department decided to make special plates for this stamp and publicly print them during the show.

These plates were made up of four 25 subject miniature panes. The panes had wide margins and were separated from each other by both horizontal and vertical guide lines. Across the top of each pane was an inscription reading "INTERNATIONAL PHILATELIC EXPOSITION, OCT. 16th to 23rd, 1926" and across the bottom "NEW YORK, N. Y., U. S. A."

Each of the panes of 25 carried in addition four marginal plate numbers, opposite the middle or third stamp on each side. The upper right pane had an "F" in the right margin. There were five plates made, No. 18770-71-72-73 and 74. Plate No. 18772 was used for printing stamps at the show, but none of the stamps so printed were sold to the public, and at the close of the exhibition both plate and printed sheets were returned to Washington and the latter destroyed. Panes from the other plates, printed at the Bureau, were sold.



RETURN IN 5 DAYS  
A. C. ROESSLER  
140 SOUTH PARKWAY  
EAST ORANGE, N. J.  
RETURN POSTAGE GUARANTEED



INTERNATIONAL  
PHILATELIC  
EXHIBITION  
STATION



A. C. ROESSLER,  
140 SOUTH PARKWAY,  
EAST ORANGE, N. J.

FIRST DAY SHOW CANCELLATION  
DOMESTIC USE  
TO NOTED STAMP DEALER



INTERNATIONAL  
PHILATELIC  
EXHIBITION  
STATION



M. R. C. Pragnell  
60 Lenox Ave.,  
St. Vital, Winnipeg Man.  
Canada.



LAST DAY SHOW CANCELLATION  
TO CANADA



# UNITED STATES

Burgoyne Campaign Issue

1927



Valley Forge Issue

1928



Monmouth Issue

1928



Hawaiian Commemorative Issue

1928



George Rogers Clark Issue

1929



Aeronautics Conference Issue

1928



Sullivan Expedition Issue

1929



Edison Commemorative Issue

1929



1929



1929







# UNITED STATES

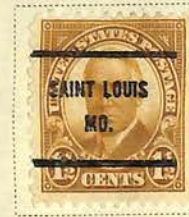
**Battle of Fallen Timbers Issue**  
1929

**Ohio Canalization Issue**  
1929

**Massachusetts Bay Colony Issue**  
1930

**Carolina - Charleston Issue**  
1930

**Braddock's Field Issue**  
1930



Coil Stamps  
1 1/4 C  
BROWN  
(686)



**Von Steuben Issue**  
1930

**Pulaski Issue**  
1930

**Red Cross Issue**  
1931

**Yorktown Issue**  
1931

**Olympic Winter Games Issue**  
1932

**Arbor Day Issue**  
1932



## Washington Bicentennial Issue

1932



**Olympic Summer Games Issue**  
1932

**William Penn Issue**  
1932

**Daniel Webster Issue**  
1932

**Georgia Bicentennial Issue**  
1933





# UNITED STATES

1933-34

## Peace Commemoration Issue



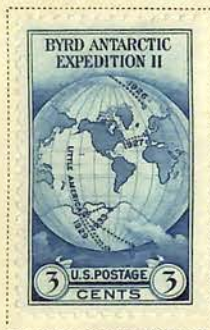
## Century of Progress Issue



Same  
Imperforate  
1 C  
YELLOW GREEN  
(730a or 776)

3 C  
VIOLET  
(731a or 767)

## Byrd Antarctic Issue



## National Exhibition Issue

Type of Byrd  
Imperforate  
Without Gum  
3 C  
DARK BLUE  
(735a or 768)

## National Recovery Issue



## Kosciuszko Issue



## Maryland Issue



## Mothers of America Issue



## Wisconsin Issue



## National Parks Issue





# UNITED STATES

1934-35

Imperforate Type of Mothers Day 3 C DEEP VIOLET (754)	Type of Wisconsin 3 C DEEP VIOLET (755)
-------------------------------------------------------------------	--------------------------------------------------

Imperforate Types of National Parks 1 C GREEN (751, 756 or 769a)	5 C BLUE (760)	8 C SAGE GREEN (763)	10 C GRAY BLACK (765)
---------------------------------------------------------------------------------	----------------------	----------------------------	-----------------------------

2 C RED (757)	3 C DEEP VIOLET (750, 758 or 770a)	4 C BROWN (759)	6 C DARK BLUE (761)
---------------------	------------------------------------------	-----------------------	---------------------------

7 C BLACK (762)	9 C RED ORANGE (764)
-----------------------	----------------------------

Type of Air Post Special Delivery 16 C DARK BLUE (771)
-----------------------------------------------------------------

1935-36

Connecticut Tercentary Issue



California Exposition Issue



Michigan Centenary Issue



Texas Centennial Issue



Arkansas Centennial Issue



Oregon Territory Centennial Issue





# UNITED STATES

1935-37

## Boulder Dam Issue



## Susan B. Anthony Commemorative Issue



## Rhode Island Tercentenary Issue



## Third International Philatelic Issue, May 9th-17th, 1936, New York, N. Y.



## Army Commemorative Issue



## Army Commemorative Issue



## Navy Commemorative Issue



## Navy Commemorative Issue





# UNITED STATES

1937

## Virginia Dare Issue

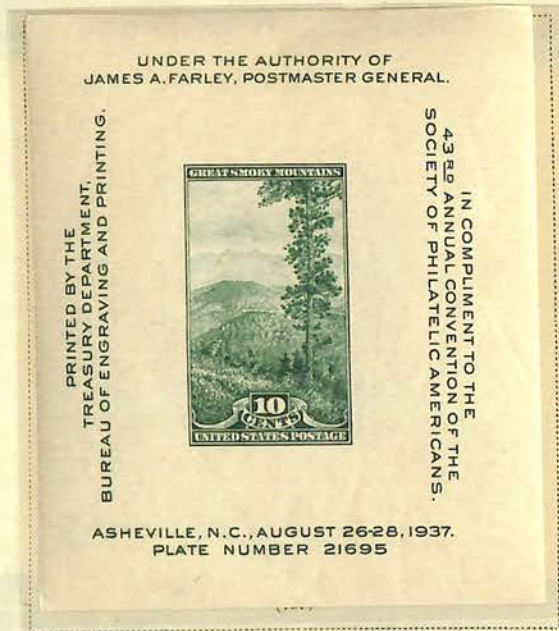
## Northwest Territory Issue



## Constitution Sesquicentennial Issue



## S. P. A. Convention Issue



## Territorial Commemorative Issue



1938

## Constitution Ratification Commemorative Issue



## Swedish - Finnish Tercentenary Issue



## Northwest Territory Sesquicentennial Issue



## Iowa Territory Centennial Issue





# UNITED STATES

1938-39





# UNITED STATES

1939-40

**Golden Gate  
Exposition Issue**



**New York  
World's Fair Issue**



**George Washington  
Inauguration Issue**



**Printing  
Tercentenary Issue**



**Baseball Centennial Issue**



**Panama Canal Issue**



**50th Anniversary of Statehood Issue**



**Pony Express Issue**



**Idaho Statehood Issue**



**Coronado Issue**



**Pan-American Union Issue**



**Wyoming Statehood Issue**



**13th Amendment Issue**





# UNITED STATES

1940

## Famous American Authors Issue



## Famous American Poets Issue



## Famous American Educators Issue



## Famous American Scientists Issue



## Famous American Composers Issue





# UNITED STATES

1940

## Famous American Artists



## Famous American Inventors



## National Defense Issue





# UNITED STATES

1934

## MOTHERS OF AMERICA



President Woodrow Wilson proclaimed the first Mother's Day as May 9, 1914. This stamp was issued to mark its 20th anniversary. The beloved symbol of this hallowed day is Whistler's "Portrait of My Mother" which he really titled "Arrangement in Grey and Black." Today this famous painting hangs in the Louvre.

## WISCONSIN TERCENTENARY



Marked arrival of Jean Nicolet near Green Bay on Lake Michigan. He thought he was in China and wore Chinese clothes!

## NATIONAL STAMP EXHIBITION Souvenir Sheet



1933

BYRD ANTARCTIC EXPED.  
Perforated 11



1934

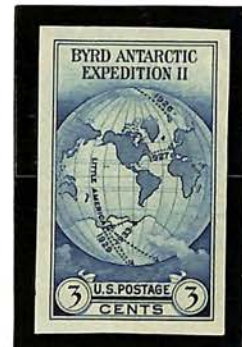
MARYLAND TERCENTENARY



These are sailing ships that carried colonists under Lord Baltimore (George Calvert) to Md.

1934

NAT. STAMP EXHIBITION  
Imperforate





# UNITED STATES

1935

SPECIAL PRINTING

Ungummed

Imperforated Gutter Pair



Imperforated Gutter Pair



Perforated Line Pair



Imperforated Gutter Pair



Perforated Gutter Pair



Imperforate Gutter Pair



Imperforate Gutter Pair





# UNITED STATES

1935  
SPECIAL PRINTING  
Ungummed

Perforated Gutter Pair



Perforated Line Pair



Imperforate Gutter Pairs





# UNITED STATES

1935  
SPECIAL PRINTING  
Ungummed

Perforated 11

Perforated 10½ x 11



PEACE SESQUICENTENNIAL



BYRD ANTARCTIC EXPEDITION

Imperforate



AIRMAIL SPECIAL DELIVERY

## SINGLE STAMPS FROM SOUVENIR SHEETS

Imperforate



CENTURY OF PROGRESS EXPOSITION

Imperforate



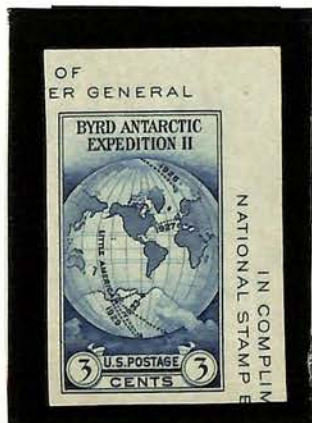
CENTURY OF PROGRESS EXPOSITION

Imperforate



MOUNT RAINIER

Imperforate



Imperforate





# UNITED STATES

1935  
SPECIAL PRINTING  
Imperforate: Ungummed



GRAND CANYON



MOUNT RAINIER



MESA VERDE



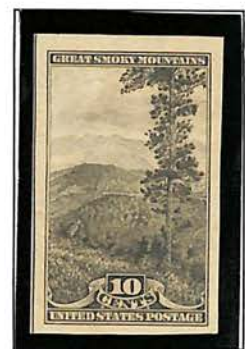
YOSEMITE



YELLOWSTONE



ZION



GREAT SMOKY MOUNTAINS



CRATER LAKE



ACADIA



GLACIER NATIONAL PARK



WHISTLER'S "MY MOTHER"



NICOLET'S LANDING

Postmaster General James A. Farley unwittingly gave some friends sheets of these stamps without gum and/or perforations. Upon learning that this would lead to great inflation in the prices, Mr. Farley printed large additional quantities so that all collectors could buy them at face value for a period of six months.



# UNITED STATES

1934

AMERICAN PHILATELIC SOCIETY  
Souvenir Sheet



TRANS-MISSISSIPPI PHILATELIC EXPOSITION  
Souvenir Sheet





# UNITED STATES

1934  
NATIONAL PARKS  
Perforated 11



YOSEMITE



YELLOWSTONE



ZION



GRAND CANYON



MOUNT RAINIER



MESA VERDE



CRATER LAKE



ACADIA



GLACIER NATIONAL PARK

Imperforate



YOSEMITE

Imperforate



MOUNT RAINIER

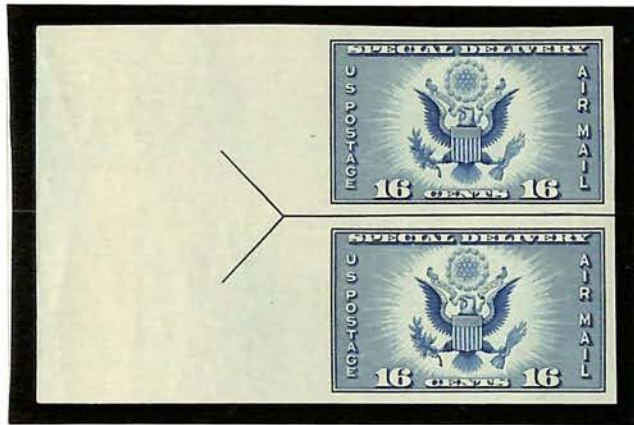
Perforated 11



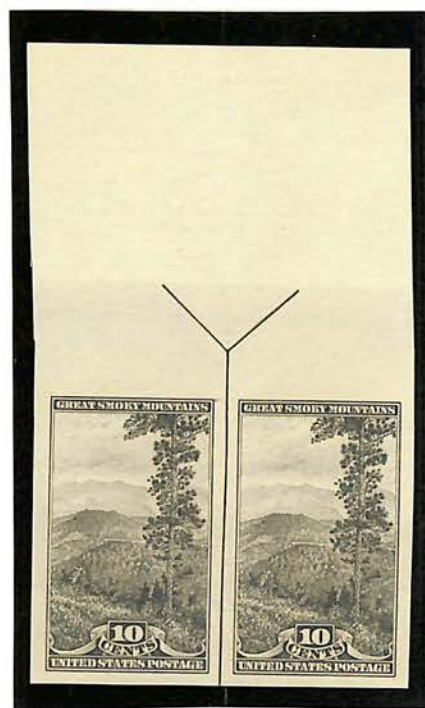
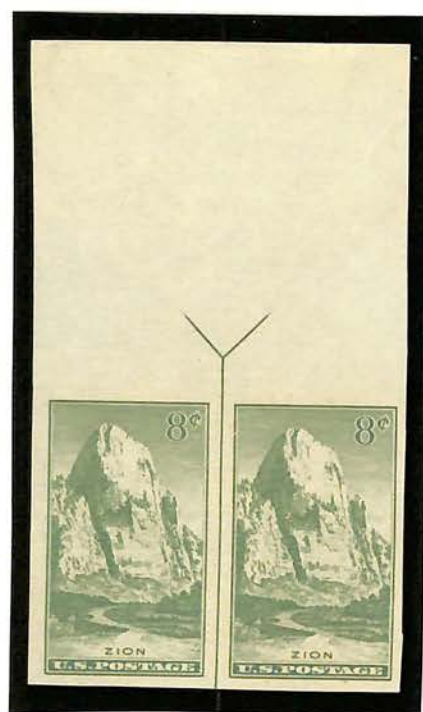
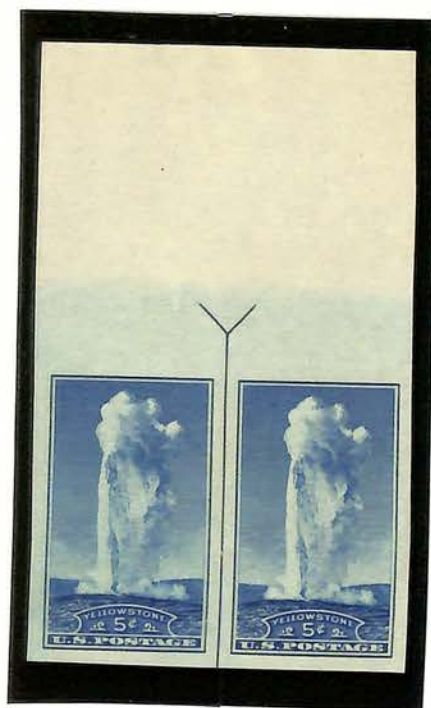
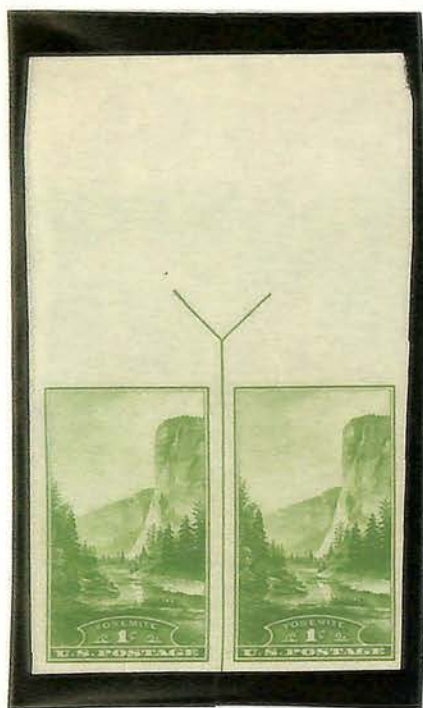
GREAT SMOKY MOUNTAINS

One of the most beautiful, colorful and interesting sets ever issued by the U.S. Government. In conjunction with National Parks Year, the illustrations were chosen to show Americans the scenic wonders awaiting them in ten National Parks.

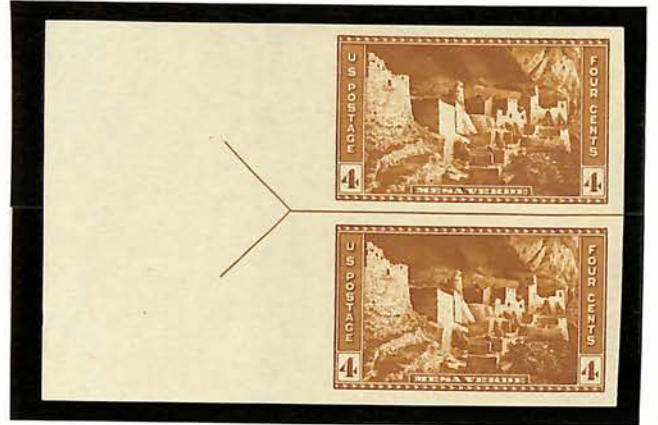














UNDER AUTHORITY OF JAMES A. FARLEY, POSTMASTER GENERAL AT A CENTURY OF PROGRESS

PRINTED BY THE TREASURY DEPARTMENT, BUREAU OF ENGRAVING AND PRINTING



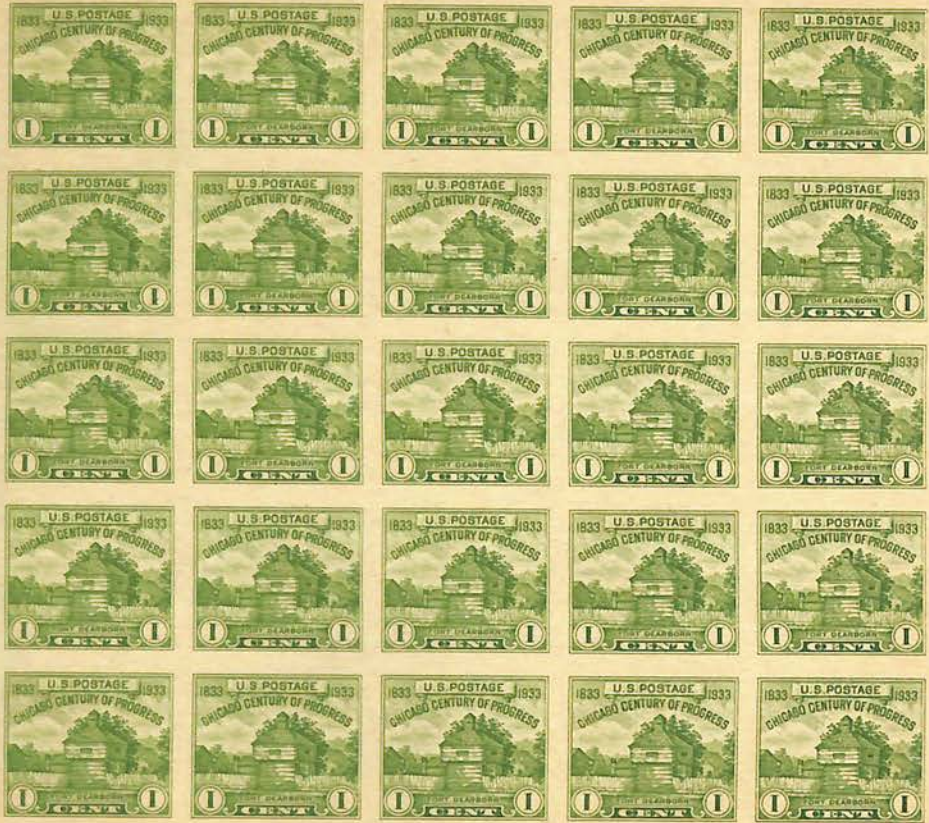
IN COMPLIMENT TO THE AMERICAN PHILATELIC SOCIETY FOR ITS CONVENTION AND EXHIBITION

CHICAGO, ILLINOIS, AUGUST 1933. PLATE NO. 21146



UNDER AUTHORITY OF JAMES A. FARLEY, POSTMASTER GENERAL AT A CENTURY OF PROGRESS

PRINTED BY THE TREASURY DEPARTMENT, BUREAU OF ENGRAVING AND PRINTING




IN COMPLIMENT TO THE AMERICAN PHILATELIC SOCIETY FOR ITS CONVENTION AND EXHIBITION

CHICAGO, ILLINOIS, AUGUST 1933. PLATE NO. 21145



UNDER AUTHORITY OF  
ROBERT E. HANNEGAN, POSTMASTER GENERAL

PRINTED BY THE  
TREASURY DEPARTMENT  
BUREAU OF ENGRAVING AND PRINTING




100TH ANNIVERSARY  
UNITED STATES POSTAGE STAMPS

IN COMPLIMENT  
TO THE CENTENARY INTERNATIONAL  
PHILATELIC EXHIBITION

NEW YORK, N. Y., MAY 17 - 25, 1947

5<sup>TH</sup> INTERNATIONAL PHILATELIC

IN COMPLIMENT TO



U.S. POSTAGE 3¢      U.S. POSTAGE 8¢

IN GOD WE TRUST

LIBERTY

EXHIBITION, 1956

*Arthur E. Summerfield*  
 POSTMASTER GENERAL OF THE UNITED STATES

NEW YORK, N. Y., APR. 28 - MAY 6



# UNITED STATES

## AIR POST STAMPS

1918



1923



1926-27



1928



1927



1930-31



1932



1933



1934



### Trans-Pacific Issue

1935-37



1938



### Trans-Atlantic Issue

1939





# UNITED STATES

## SPECIAL DELIVERY STAMPS

Unwatermarked

1885



1888



1893



1894



Watermarked USPS

1895



1902



Watermarked USPS

1908



1911-14



Unwatermarked

1916-17



1922-27



1925-31



1925



## REGISTRATION STAMP

Wmkd. USPS

1911



## AIR POST SPECIAL DELIVERY STAMPS

1934-36






# UNITED STATES

## POSTAGE DUE STAMPS

1879

	2 C BROWN  (J2)	3 C BROWN  (J3)	5 C BROWN  (J4)
----------------------------------------------------------------------------------	--------------------------	--------------------------	--------------------------


1887-89

Type of 1879 1 C RED BROWN  (J15)	2 C RED BROWN  (J16)	5 C RED BROWN  (J18)
-----------------------------------------------	-------------------------------	-------------------------------

1891-93

Type of 1883 1 C BRIGHT CLARET  (J22)	2 C BRIGHT CLARET  (J23)	3 C BRIGHT CLARET  (J24)	5 C BRIGHT CLARET  (J25)	10 C BRIGHT CLARET  (J26)	30 C BRIGHT CLARET  (J27)	50 C BRIGHT CLARET  (J28)
------------------------------------------------------	--------------------------------------	--------------------------------------	--------------------------------------	---------------------------------------	---------------------------------------	---------------------------------------

1894

	2 C DEEP CLARET  (J32)	3 C DEEP CLARET  (J33)	5 C DEEP CLARET  (J34)	10 C DEEP CLARET  (J35)	30 C DEEP CLARET  (J36)
------------------------------------------------------------------------------------	---------------------------------	---------------------------------	---------------------------------	----------------------------------	----------------------------------

J-3)  
~ 4

### Watermarked USPS

1895

Type of 1894 1 C DEEP CLARET  (J38)	2 C DEEP CLARET  (J39)	3 C DEEP CLARET  (J40)	5 C DEEP CLARET  (J41)	10 C DEEP CLARET  (J42)	30 C DEEP CLARET  (J43)	50 C DEEP CLARET  (J44)
-------------------------------------------------	---------------------------------	---------------------------------	---------------------------------	----------------------------------	----------------------------------	----------------------------------

### Watermarked USPS

1911-13

Figure of value in lozenge-shaped frame 1 C DEEP CLARET  (J45 or J52)	2 C DEEP CLARET  (J46 or J53)	3 C DEEP CLARET  (J47 or J54)	5 C DEEP CLARET  (J48 or J55)	10 C DEEP CLARET  (J49 or J56)	30 C CARMINE LAKE  (J57)
-----------------------------------------------------------------------------------------	----------------------------------------	----------------------------------------	----------------------------------------	-----------------------------------------	-----------------------------------

### Unwatermarked

1925

Same ½ C DULL RED  (J68)
--------------------------------------

### Unwatermarked

1917-23

Same 1 C CARMINE ROSE  (J61)	2 C CARMINE ROSE  (J62)	3 C CARMINE ROSE  (J63)	5 C CARMINE  (J64)	10 C CARMINE ROSE  (J65)	30 C CARMINE ROSE  (J66)	50 C CARMINE ROSE  (J67)
---------------------------------------------	-------------------------------------	-------------------------------------	-----------------------------	--------------------------------------	--------------------------------------	--------------------------------------



# UNITED STATES

## POSTAGE DUE STAMPS

Unwatermarked

1930-33



5 C  
DEEP  
CARMINE

(J75 or J83)



30 C  
DEEP  
CARMINE

(J75 or J85)

50 C  
DEEP  
CARMINE

(J76 or J86)



(J77)

\$ 5  
DEEP CARMINE

(J78)



J 58

## PARCEL POST DUE STAMPS

Watermarked **USPS**

1912



(JQ1)

2 C  
DARK GREEN

(JQ2)

5 C  
DARK GREEN

(JQ3)

10 C  
DARK GREEN

(JQ4)

25 C  
DARK GREEN

(JQ5)

## NEWSPAPER STAMPS



## Offices in China

Unwatermarked

1919

SHANGHAI

2¢

CHINA

On 1 C GREEN

(K1)

4 C  
On 2 C  
ROSE

(K2)

6 C  
On 3 C  
VIOLET

(K3)

8 C  
On 4 C  
BROWN

(K4)

10 C  
On 5 C  
BLUE

(K5)

12 C  
On 6 C  
RED ORANGE

(K6)

14 C  
On 7 C  
BLACK

(K7)



# UNITED STATES

PARCEL POST STAMPS

Watermarked USPS

1912-13



## Unwatermarked

1928-29

	<p>15 C YELLOW GREEN</p>	<p>20 C YELLOW GREEN</p>	<p>25 C YELLOW GREEN</p>
(QE1)	(QE2)	(QE3)	(QE4)





# UNITED STATES

## ENVELOPES

1853-55



3 C  
RED  
ON BUFF

(U9)

(U10)

1864



3 C  
PINK  
ON BUFF

(U58)

(U59)

1870



(U82)

1870

3 C  
GREEN  
ON AMBER

(U85)

3 C  
GREEN  
ON CREAM

(U84)

1 C  
BLUE  
ON ORANGE

(U76)

1 C  
BLUE  
ON MANILA

(U77)



(U80)

1874-86



(U113)

1 C  
LIGHT BLUE  
ON AMBER

(U114)

1 C  
BLUE  
ON CREAM

(U115)

1 C  
LIGHT BLUE  
ON ORANGE

(U116)

1 C  
LIGHT BLUE  
ON MANILA

(U120)



(U142)

2 C  
VERMILION  
ON AMBER

(U143)

2 C  
VERMILION  
ON FAWN

(U147)

2 C  
VERMILION  
ON MANILA

(U148)



(U163)

3 C  
GREEN  
ON AMBER

(U164)



(U165)

3 C  
GREEN  
ON BLUE

(U166)

3 C  
GREEN  
ON FAWN

(U167)




(U181)




# UNITED STATES

ENVELOPES  
1887-95

	<p>1 C BLUE ON AMBER</p> <p>(U296)</p>	<p>1 C BLUE ON MANILA</p> <p>(U300 or W301)</p>		<p>2 C GREEN ON AMBER</p> <p>(U312)</p>
-----------------------------------------------------------------------------------	------------------------------------------------	---------------------------------------------------------	------------------------------------------------------------------------------------	-------------------------------------------------

<p>2 C GREEN ON ORIENTAL BUFF</p> <p>(U313)</p>	<p>2 C GREEN ON BLUE</p> <p>(U314)</p>	<p>2 C GREEN ON MANILA</p> <p>(U315 or W316)</p>		<p>4 C CARMINE ON AMBER</p> <p>(U325)</p>
---------------------------------------------------------	------------------------------------------------	----------------------------------------------------------	-------------------------------------------------------------------------------------	---------------------------------------------------


<p>4 C CARMINE ON ORIENTAL BUFF</p> <p>(U326)</p>	<p>4 C CARMINE ON BLUE</p> <p>(U327)</p>	<p>4 C CARMINE ON MANILA</p> <p>(U328)</p>		<p>5 C BLUE ON AMBER</p> <p>(U331)</p>
-----------------------------------------------------------	--------------------------------------------------	----------------------------------------------------	--------------------------------------------------------------------------------------	------------------------------------------------

<p>5 C BLUE ON ORIENTAL BUFF</p> <p>(U332)</p>	<p>5 C BLUE ON BLUE</p> <p>(U333)</p>
--------------------------------------------------------	-----------------------------------------------



U343  
ON AMBER

Columbian Issue  
1893

	<p>2 C VIOLET ON WHITE</p> <p>(U348)</p>	<p>5 C CHOCOLATE ON WHITE</p> <p>(U349)</p>	<p>10 C SLATE BROWN ON WHITE</p> <p>(U350)</p>
-------------------------------------------------------------------------------------	--------------------------------------------------	-----------------------------------------------------	--------------------------------------------------------



# UNITED STATES

## ENVELOPES

1899



(U352)



1 C  
GREEN ON  
ORIENTAL BUFF

(U354)

1 C  
GREEN  
ON BLUE

(U355)

1 C  
GREEN  
ON MANILA

(U356 or W357)



(U362)



2 C  
CARMINE ON  
ORIENTAL BUFF

(U364)

2 C  
CARMINE  
ON BLUE

(U365)

2 C  
CARMINE  
ON MANILA

(W366)



(U371)

4 C  
BROWN  
ON AMBER

(U372)



(U377)

5 C  
BLUE  
ON AMBER

(U378)

1903



(U379)

1 C  
GREEN  
ON AMBER

(U380)

1 C  
GREEN ON  
ORIENTAL BUFF

(U381)

1 C  
GREEN  
ON BLUE

(U382)

1 C  
GREEN  
ON MANILA

(U383 or W384)



(U385 or U395)

2 C  
CARMINE  
ON AMBER

(U386 or U396)

2 C  
CARMINE ON  
ORIENTAL BUFF


(U387 or U397)





# UNITED STATES

## ENVELOPES

1903

<p>2 C CARMINE ON BLUE</p> <p>(U388 or U398)</p>	<p>2 C CARMINE ON MANILA</p> <p>(W389 or W399)</p>	 <p>(U390)</p>	<p>4 C CHOCOLATE ON AMBER</p> <p>(U391)</p>
----------------------------------------------------------	------------------------------------------------------------	--------------------------------------------------------------------------------------------------	-----------------------------------------------------

1903

<p>4 C CHOCOLATE ON MANILA</p> <p>(W392)</p>	 <p>(U393)</p>	<p>5 C BLUE ON AMBER</p> <p>(U394)</p>	<p>1907-10</p>  <p>(U400)</p>
------------------------------------------------------	-------------------------------------------------------------------------------------------------	------------------------------------------------	------------------------------------------------------------------------------------------------------------------

1907-10

<p>1 C GREEN ON AMBER</p> <p>(U401)</p>	<p>1 C GREEN ON ORIENTAL BUFF</p> <p>(U402)</p>	<p>1 C GREEN ON BLUE</p> <p>(U403)</p>	<p>1 C GREEN ON MANILA</p> <p>(U404 or W405)</p>	 <p>(U406)</p>
-------------------------------------------------	---------------------------------------------------------	------------------------------------------------	----------------------------------------------------------	-----------------------------------------------------------------------------------------------------


<p>2 C BROWN RED ON AMBER</p> <p>(U407)</p>	<p>2 C BROWN RED ON ORIENTAL BUFF</p> <p>(U408)</p>	<p>2 C BROWN RED ON BLUE</p> <p>(U409)</p>		<p>2 C CARMINE ON AMBER</p> <p>(U412)</p>
-----------------------------------------------------	-------------------------------------------------------------	----------------------------------------------------	--------------------------------------------------------------------------------------	---------------------------------------------------





# UNITED STATES

## ENVELOPES 1907-10

<p>2 C CARMINE ON ORIENTAL BUFF</p> <p>(U413)</p>	<p>2 C CARMINE ON BLUE</p> <p>(U414)</p>	<p>2 C CARMINE ON MANILA</p> <p>(U415)</p>	 <p>(U416)</p>	<p>4 C BLACK ON AMBER</p> <p>(U417)</p>
-----------------------------------------------------------	--------------------------------------------------	----------------------------------------------------	---------------------------------------------------------------------------------------------------	-------------------------------------------------


1907-10

1916-21

 <p>(U418)</p>	<p>5 C BLUE ON AMBER</p> <p>(U419)</p>	 <p>(U420)</p>	 <p>(Sec. 562 P. L. &amp; R.)</p>
-------------------------------------------------------------------------------------------------	------------------------------------------------	-------------------------------------------------------------------------------------------------	----------------------------------------------------------------------------------------------------------------------

1916-21

<p>1 C GREEN ON BLUE</p> <p>(U423)</p>				
------------------------------------------------	------------------------------------------------------------------------------------	------------------------------------------------------------------------------------	--------------------------------------------------------------------------------------	---------------------------------------------------------------------------------------

	<p>3 C DARK VIOLET ON AMBER</p> <p>(U427)</p>	<p>3 C DARK VIOLET ON ORIENTAL BUFF</p> <p>(U428)</p>	<p>3 C DARK VIOLET ON BLUE</p> <p>(U429)</p>	<p>4 C BLACK ON WHITE</p> <p>(U440)</p>
-------------------------------------------------------------------------------------	-------------------------------------------------------	---------------------------------------------------------------	------------------------------------------------------	-------------------------------------------------

<p><i>Franklin</i> 4 C BLACK ON AMBER</p> <p>(U441)</p>	<p>4 C BLACK ON BLUE</p> <p>(U442)</p>	<p><i>Washington</i> 5 C BLUE ON WHITE</p> <p>(U443)</p>	<p>5 C BLUE ON AMBER</p> <p>(U444)</p>	<p>5 C BLUE ON BLUE</p> <p>(U445)</p>
---------------------------------------------------------------------	------------------------------------------------	----------------------------------------------------------------------	------------------------------------------------	-----------------------------------------------




# UNITED STATES

## ENVELOPES



1920-21

Envelopes of 1874-1921 Surcharged with New Value



 <p>On 3 C VIOLET ON WHITE (U446)</p>	<p>Rose Surcharge</p>  <p>On 3 C VIOLET ON WHITE (U447)</p>	<p>Black Surcharge</p> <p>2 C On 3 C VIOLET ON WHITE (U448)</p>	<p>2 C On 3 C VIOLET ON AMBER (U449)</p>	<p>3 C On 3 C VIOLET ON ORIENTAL BUFF (U450)</p>
--------------------------------------------------------------------------------------------------------------------------------	------------------------------------------------------------------------------------------------------------------------------------------------------	---------------------------------------------------------------------------------	----------------------------------------------------------	------------------------------------------------------------------

<p>2 C On 3 C VIOLET ON BLUE (U451)</p>	 <p>On 3 C VIOLET ON WHITE (U458)</p>	<p>2 C On 3 C VIOLET ON AMBER (U459)</p>	<p>2 C On 3 C VIOLET ON ORIENTAL BUFF (U460)</p>	<p>2 C On 3 C VIOLET ON BLUE (U461)</p>
---------------------------------------------------------	--------------------------------------------------------------------------------------------------------------------------------	----------------------------------------------------------	------------------------------------------------------------------	---------------------------------------------------------

1925-34

 <p>(U462)</p>	<p>1/2 C BROWN ON AMBER (U482)</p>	<p>1/2 C BROWN ON BLUE (U483)</p>	
---------------------------------------------------------------------------------------------------	------------------------------------------------	-----------------------------------------------	--------------------------------------------------------------------------------------

1925

<p>Issue of 1907-10 Surcharged</p>  <p>On 1 C GREEN ON WHITE (U490)</p>	<p>1/2 C On 1 C GREEN ON AMBER (U491)</p>	<p>Same On Issue of 1916-21</p> <p>1/2 C On 1 C GREEN ON WHITE (U495)</p>		<p>1/2 C On 1 C GREEN ON BUFF (U497)</p>
--------------------------------------------------------------------------------------------------------------------------------------------------------------------	-----------------------------------------------------------	-----------------------------------------------------------------------------------------------	--------------------------------------------------------------------------------------	----------------------------------------------------------

<p>1/2 C On 1 C GREEN ON BLUE (U498)</p>	<p>1/2 C On 1 C GREEN ON MANILA (U499)</p>		<p>Same On Issue of 1907-10</p> <p>1/2 C On 1 C GREEN ON WHITE (U510)</p>	<p>1/2 C On 1 C GREEN ON AMBER (U511)</p>
----------------------------------------------------------	------------------------------------------------------------	-------------------------------------------------------------------------------------	-----------------------------------------------------------------------------------------------	-----------------------------------------------------------

U501



# UNITED STATES

## ENVELOPES

1925

<p>1½ C On 1 C GREEN ON ORIENTAL BUFF</p> <p>(U512)</p>	<p>1½ C On 1 C GREEN ON BLUE</p> <p>(U513)</p>	<p>1½ C On 1 C GREEN ON MANILA</p> <p>(U514)</p>	<p>Same On Issue of 1916-21 1¼ C On 1 C GREEN ON WHITE</p> <p>(U515)</p>	<p>1½ C On 1 C GREEN ON ORIENTAL BUFF</p> <p>(U517)</p>
---------------------------------------------------------------------	------------------------------------------------------------	--------------------------------------------------------------	----------------------------------------------------------------------------------------------	---------------------------------------------------------------------

## Sesquicentennial Issue

1926

1925

<p>1½ C On 1 C GREEN ON BLUE</p> <p>(U518)</p>	<p>1½ C On 1 C GREEN ON MANILA</p> <p>(U519)</p>	<p>Magenta Surcharge 1½ C On 1 C GREEN ON WHITE</p> <p>(U521)</p>
------------------------------------------------------------	--------------------------------------------------------------	-----------------------------------------------------------------------------------



## Washington Bicentennial Issue

1932

<p>(U523)</p>	<p>(U524)</p>	<p>2 C CARMINE ON WHITE</p> <p>(U525)</p>
---------------	---------------	---------------------------------------------------

<p>3 C VIOLET ON WHITE</p> <p>(U526)</p>	<p>4 C BLACK ON WHITE</p> <p>(U527)</p>	<p>5 C DARK BLUE ON WHITE</p> <p>(U528)</p>
--------------------------------------------------	-------------------------------------------------	-----------------------------------------------------

<p>Type of 1916-21 6 C ORANGE ON WHITE</p> <p>(U529)</p>	<p>6 C ORANGE ON BLUE</p> <p>(U530)</p>	<p>6 C ORANGE ON AMBER</p> <p>(U531)</p>
----------------------------------------------------------------------	-------------------------------------------------	--------------------------------------------------



# UNITED STATES

AIR POST ENVELOPES

1928-34



(UC1 or UC2)

6 C  
DULL ORANGE  
ON WHITE

(UC3)

8 C  
OLIVE GREEN  
ON WHITE

(UC4)

## LETTER SHEET

1886



(U293)

## OFFICIAL ENVELOPES

Post Office Department

1873-76



6 C  
BLACK

(UO1 or UO12)



# UNITED STATES

## HUNTING PERMIT STAMPS

1934-40



## Confederate States







# The Philatelic Foundation

501 Fifth Avenue • Suite 1901  
New York, NY 10017

EXPERT COMMITTEE

No. 0363905  
11/30/00

We have examined the enclosed item, of which a photograph is attached, and *described by the applicant* as follows:

Country: UNITED STATES OF AMERICA

Cat. No.	Issue	Denom.	Color
120	1869	24¢	green & violet

Scott's unless otherwise specified.

USED

AND WE ARE OF THE OPINION THAT:

IT IS GENUINE WITH A SMALL CORNER CREASE AT TOP  
LEFT \* \* \* \* \*



For The Expert Committee  
Chairman

D 053442

Photocopies of this Certificate are not valid.

Submitted by

REGENCY STAMPS, LTD.



No. 01250450

5/11/2012



## Professional Stamp Experts

P.O. Box 6170, Newport Beach, CA 92658

### Expert Committee

We have examined the enclosed item submitted to PSE, of which an image is shown below, and are of the opinion that:

Cat No.	Issue	Denom.	Color
Scott 228 (USD 68)	1890	30c	Black

"it is genuine used."



For The Expert Committee

THIS CERTIFICATE IS PRINTED ON WATERMARKED PAPER AND IS NOT VALID WITHOUT WATERMARK





No. 01112953 5/23/2007  
|||||

**Professional Stamp Experts**  
P.O. Box 6170, Newport Beach, CA 92658

*Expert Committee*

We have examined the enclosed item submitted to PSE, of which an image is shown below, and are of the opinion that:

Cat #	Issue	Denom.	Color
US#397	1913	1c	Green

**GRADE: XF 90, Used**

"it is genuine used."



*[Signature]*  
For The Expert Committee

THIS CERTIFICATE IS PRINTED ON WATERMARKED PAPER AND IS NOT VALID WITHOUT WATERMARK



No. 01238956 8/3/2011  
|||||

**Professional Stamp Experts**  
P.O. Box 6170, Newport Beach, CA 92658

*Expert Committee*

We have examined the enclosed item submitted to PSE, of which an image is shown below, and are of the opinion that:

Cat No.	Issue	Denom.	Color
Scott 463 (USD 164)	1916	2c	Carmine

**GRADE: VF 80, Used**

"it is genuine used."



*[Signature]*  
For The Expert Committee

THIS CERTIFICATE IS PRINTED ON WATERMARKED PAPER AND IS NOT VALID WITHOUT WATERMARK

3na 20-

20-





No. 01374182

2/21/2020



## ***Professional Stamp Experts***

PO Box 539309, Henderson, NV 89053-9309

gradingmatters.com

### ***Expert Committee***

We have examined the enclosed item submitted to PSE, of which an image is shown below, and are of the opinion that:

Cat No.	Issue	Denom.	Color
Scott 550 USA	1920	5c	Deep blue

**GRADE: VF-XF 85, Mint OGnh**

“it is genuine unused, o.g., never hinged.”



*Shuphy*

*For The Expert Committee*

THIS CERTIFICATE IS PRINTED ON WATERMARKED PAPER AND IS NOT VALID WITHOUT WATERMARK