

85B

87

89

94

94

96

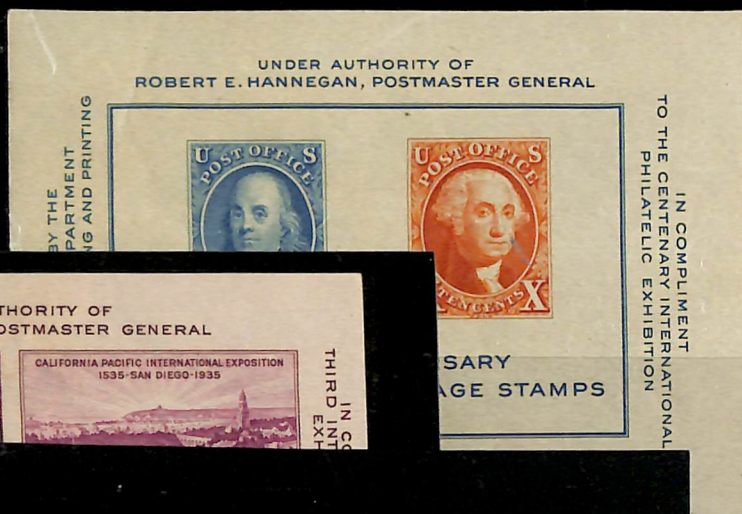
137

166

191

276

7650-



12/198-

~~2,178.00~~

UNITED STATES POSTAGE STAMPS

1911

IMPERFORATE—WATERMARKED SINGLE LINE

2-

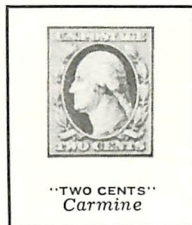
USPS

4-



"ONE CENT"
Green

383 (20¢)



"TWO CENTS"
Carmine

384

1910-11

COIL STAMPS—WATERMARKED SINGLE LINE

USPS

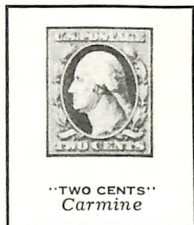
PERFORATED 12 HORIZONTALLY

PERFORATED 12 VERTICALLY



"ONE CENT"
Green

100- 385 (125)



"TWO CENTS"
Carmine

130- 386 (100)



"ONE CENT"
Green

190- 387 (295)



"TWO CENTS"
Carmine

1350 388 (2500)

1910-13

COIL STAMPS—WATERMARKED SINGLE LINE

USPS

PERFORATED 8 1/2 HORIZONTALLY



"ONE CENT"
Green

10-



"TWO CENTS"
Carmine

42-

390

391 (265)

PERFORATED 8 1/2 VERTICALLY



"ONE CENT"
Green

65- 392 (130)



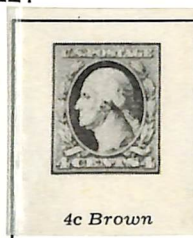
Carmine

105- 393 (295)



3c Violet

60- 394 (200)



4c Brown

60- 395 (375)



5c Blue

60- 396 (330)

105-

TOTAL \$20,995.00

\$1,358.00

UNITED STATES POSTAGE STAMPS

1908-09
WATERMARKED DOUBLE LINE
USPS
PERFORATED 12



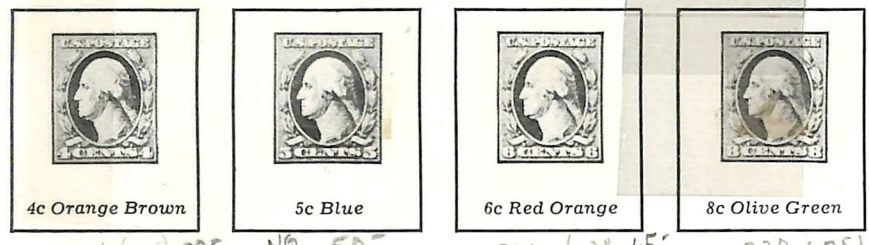
**

**

331 374 17

6

33 375 375



**

45

334 (065) 92

NG 50

336 (22) 65

337 (135)



NG

LH
CLEAN

67 335 (12)

339 37

340 (12) 65

300 341 (1500)

475 342 (3500)

THIS DESIGN, ADOPTED IN 1908, WITH THE EXCEPTION OF SOME MINOR CHANGES WAS IN USE UNTIL THE YEAR 1922.

1908
WATERMARKED DOUBLE LINE
USPS
IMPERFORATE



5 343 (254)

344 (05)

345 (240)

64

346 (280)

347 (520)

37

434.00

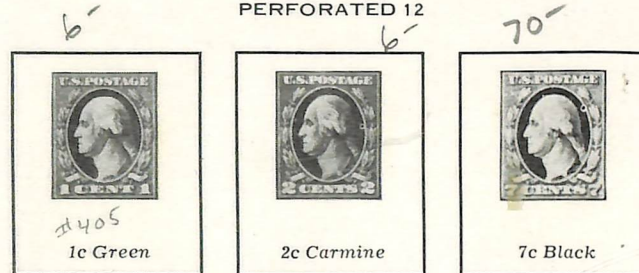
UNITED STATES POSTAGE STAMPS

1912-14

WATERMARKED SINGLE LINE

USPS

PERFORATED 12



405

1c Green

2c Carmine

7c Black

407

BEGINNING WITH THIS ISSUE, THE STAMPS FROM ONE CENT TO SEVEN CENTS ALL PICTURE WASHINGTON AND THE VALUE ON THE ONE AND TWO CENT STAMPS HERETOFORE EXPRESSED IN WORDS IS SHOWN IN NUMERALS.

1912

WATERMARKED SINGLE LINE

USPS

IMPERFORATE



408 (124)

409

1912

COIL STAMPS—WATERMARKED SINGLE LINE

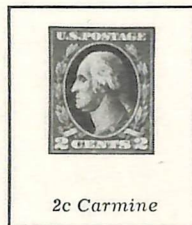
USPS

PERFORATED 8½ HO

PERFORATED 8½ VERTICALLY



1c Green



2c Carmine



1c Green



13- 410 (10)

22- 411 (354)

55- 412 (104)

260- 413 (320) NH

262-

41,023⁰⁰

UNITED STATES POSTAGE STAMPS

1912-14

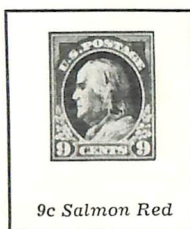
WATERMARKED SINGLE LINE

USPS

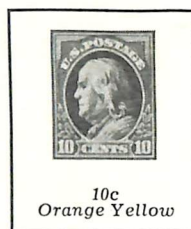
PERFORATED 12



412-



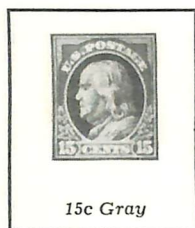
415 (3⁰⁰)
52-



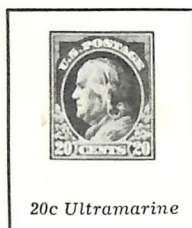
416 (1⁰⁰)
42-



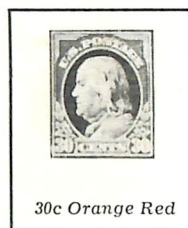
417 (1²⁵)
42-



418 85-



419 (10⁰⁰)
190-



115-420 (9⁰⁰)



421 (33²⁵)
350-

THIS ISSUE SUPPLEMENTS THE PRECEDING ISSUE AND SHOWS THE STAMPS FROM THE EIGHT CENT VALUE AND UPWARDS WITH PORTRAIT OF BENJAMIN FRANKLIN. AN ALTERATION IN THE BORDER DESIGN HAS ALSO BEEN MADE.

1912

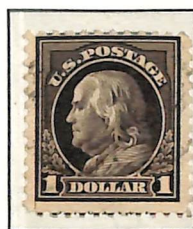
WATERMARKED DOUBLE LINE

USPS

PERFORATED 12



422



423

105-

41,341.00

UNITED STATES POSTAGE STAMPS

1914-15

WATERMARKED SINGLE LINE

USPS

PERFORATED 10

**



424
1c Green

5-



425
2c Carmine

2-

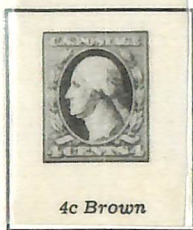


3c Deep Violet

14- 426

#425 diff color

**



4c Brown

427(100)
32-



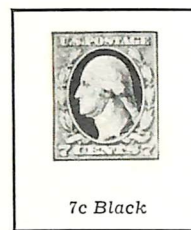
5c Blue

428(100)
32-



6c Red Orange

429(100)
45-



7c Black

90- 430(300)



8c Olive Green

35- 431(100)



432 a-



10c
Orange Yellow

433(025)
45-



11c Dark Green

22- 434(115)



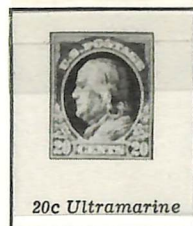
12c Claret Brown

25- 435(025)



15c Gray

437(875)
125-



20c Ultramarine

438(875)
190-



30c Orange Red

439(1325)
220-



50c Violet

440(3900)
450-

\$4,995.00

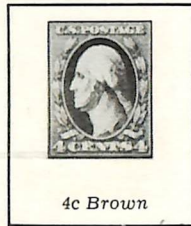
UNITED STATES POSTAGE STAMPS

1908-10

COIL STAMPS—WATERMARKED DOUBLE LINE

** 225 USPS 140

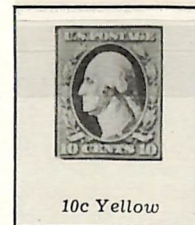
PERFORATED 12 HORIZONTALLY



4c Brown

5c Blue

PERFORATED 12 VERTICALLY



"ONE CENT"
Green

4c Brown

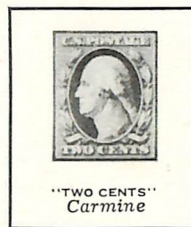
5c Blue

10c Yellow

1912

BLUISH PAPER—WATERMARKED DOUBLE LINE—PERFORATED 12

USPS



"ONE CENT"
Green

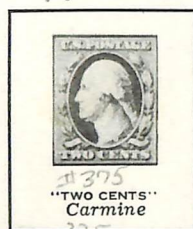
"TWO CENTS"
Carmine

85- 357 (600) 80- 358 (600)

1910-11

WATERMARKED SINGLE LINE—PERFORATED 12

USPS



"ONE CENT"
Green

"TWO CENTS"
Carmine

3c Deep Violet

4c Brown



5c Blue

6c Red Orange

8c Olive Green

10c Yellow

15c
Pale Ultramarine

378 (125)

379 (195)

380 (375)

381 (400)

382 (1100)

30-

40-

100-

95-

240-

305

\$2,933.00

UNITED STATES POSTAGE STAMPS

1915

WATERMARKED DOUBLE LINE

USPS

PERFORATED 10



\$1.00 Violet Black

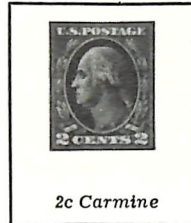
460 (560)
[Lansill Donald Co.]
11/12/85

1915

WATERMARKED SINGLE LINE

USPS

PERFORATED 11



2c Carmine

461 (1200)

1916-17

UNWATERMARKED

** PERFORATED 10 10



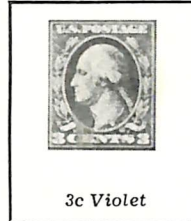
462
1c Green

462 (250)



2c Carmine

463 (0.65)



3c Violet

464 (1000)



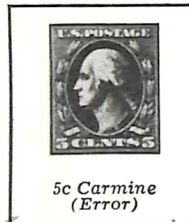
4c Orange Brown

465 (130)



5c Blue

466 (300) 60



5c Carmine
(Error)

467



6c Orange

468



7c Black

469 (320)



8c Olive Green

470 (0.50)



9c Salmon Red

471 (2.75)



10c
Orange Yellow

472 (4.20)



11c Dark Green

473 (2.00)



12c Claret Brown

474 (4.80)



15c Gray

180 475 (12.75)



20c Light
Ultramarine

476 (0.65)
225



50c Bright Violet

477 (6.90)
900



\$1.00 Violet Black

478 (52.50)
625

245

43,629.00

UNITED STATES POSTAGE STAMPS

1914
COIL STAMPS
FLAT PLATE PRINTING—WATERMARKED SINGLE LINE

U S P S

PERFORATED 10 HORIZONTALLY



PERFORATED 10 VERTICALLY



1914-15
COIL STAMPS
ROTARY PRESS PRINTING—WATERMARKED SINGLE LINE

U S P S

PERFORATED 10 HORIZONTALLY



PERFORATED 10 VERTICALLY



DURING THIS PERIOD THE BUREAU WAS EXPERIMENTING WITH THE NEW ROTARY PRESSES WHICH PRINTED STAMPS FROM CURVED PLATES INSTEAD OF FLAT PLATES. THUS WE HAVE TWO IDENTICAL ISSUES OF COIL STAMPS SHOWN ON THIS PAGE WHICH ARE EXACTLY ALIKE IN ALL OTHER RESPECTS THAN IN SIZE, DUE TO THE FACT THAT THE ROTARY PRESS STAMPS WERE PRINTED FROM PLATES THAT HAD TO BE CURVED TO FIT AROUND A CYLINDER ON THE PRESS. THIS NATURALLY MADE THE SURFACE OF THE PLATE OR EACH INDIVIDUAL STAMP A BIT WIDER OR HIGHER THAN IN THE FLAT PLATES. THE FLAT PLATE STAMPS MEASURE ABOUT 18½ TO 19 MM. WIDE BY 22¼ MM. HIGH. THE SAME STAMPS PRINTED FROM ROTARY PRESS PLATES WILL MEASURE THE SAME SIZE IN EITHER WIDTH OR HEIGHT AND ABOUT A HALF MM. MORE IN THE OTHER DIMENSION.

UP TO THIS TIME ALL STAMPS WERE PRINTED FROM FLAT PLATES. FROM HERE ON IT IS NECESSARY IN MANY ISSUES TO DISTINGUISH BETWEEN FLAT PLATE AND ROTARY PRESS PRINTINGS.

1038-

\$485.00

UNITED STATES POSTAGE STAMPS

1916-17

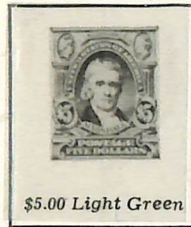
SAME DESIGN AS 1902 ISSUE

UNWATERMARKED

PERFORATED 10



\$2.00 Dark Blue



\$5.00 Light Green

210-

170-

479 (3953)

480 (1648)

NO NEW STAMPS OF TWO AND FIVE DOLLAR VALUE HAD BEEN ISSUED SINCE 1902. A NEED FOR THESE VALUES CAUSED THE REISSUE OF THESE TWO DESIGNS PENDING PREPARATION AND PRODUCTION OF DESIGNS TO CORRESPOND WITH THE STAMPS NOW IN USE.

1916-17

FLAT PLATE PRINTING—UNWATERMARKED

IMPERFORATE



12-

** 4-

481

482 (279)

483

un-120-120

1916-18

COIL STAMPS

ROTARY PRESS PRINTING—UNWATERMARKED

PERFORATED 10 HORIZONTALLY



1-

486

3- 487

489 4-

PERFORATED 10 VERTICALLY



490

492

493 (244)

495 (504)

3- 496

17- 497

9-

30-

21-

120-

UNITED STATES POSTAGE STAMPS

1919

ROTARY PRESS PRINTING—UNWATERMARKED

PERFORATED 11X10



538 (60¢)



540 (1.00)



541 (1.95)

FOR SOME TIME THE BUREAU HAD BEEN EXPERIMENTING WITH A HIGH SPEED ROTARY TYPE PRESS WHICH PRINTED FROM RECESS ENGRAVED CURVED PLATES. THESE ARE THE FIRST STAMPS OF THIS KIND TO BE ISSUED IN SHEETS.

10-

**

27-

40-

1920

ROTARY PRINT—UNWATERMARKED

PERFORATED 10X11



542 (42¢)

*
30-

1921

ROTARY PRINT—UNWATERMARKED

PERFORATED 10



543 (34)

1921

ROTARY PRINT—UNWATERMARKED

PERFORATED 11



545 (65¢)

170-



546 (28¢)

105-

1920

FLAT PLATE PRINTING—UNWATERMARKED

PERFORATED 11



CHANGE OF COLOR OF THE 1918 ISSUE.

547 (27.5¢)

125-

#937⁰⁰

UNITED STATES POSTAGE STAMPS

1917-19
UNWATERMARKED
PERFORATED 11



499 (6¢)

Type I



5c Rose (Error)



6c Red Orange

350-

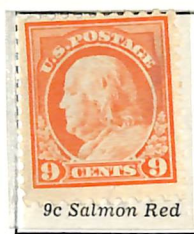
+

504 (2¢)

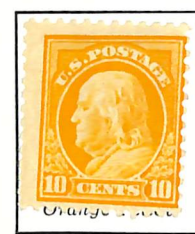
505



Black



9c Salmon Red



Orange

✖

509 (0.50)



#513 (1¢)



514 (2¢)



Ultramarine



516 (1.00)



517 (1.00)



518 (4.20)

AT ABOUT THIS TIME THE USE OF WATERMARKED PAPER WAS DEFINITELY ABANDONED WHILE EXPERIMENTS WITH NEW SIZE PERFORATION WAS IN PROGRESS. IT WAS DUE TO THIS CHANGE AND EXPERIMENTING THAT NUMEROUS VARIETIES CAME OUT IN THE FEW FOLLOWING YEARS.

305-

41,175.00

UNITED STATES POSTAGE STAMPS

1917

TYPE OF 1908-09 ISSUE
WATERMARKED DOUBLE LINE

U S P S

PERFORATED 11



Carmine

519 (22 52)

1918

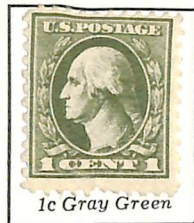
NEW DESIGN—PORTRAIT OF FRANKLIN
UNWATERMARKED—PERFORATED 11



1918-20

OFFSET PRINTING

UNWATERMARKED—PERFORATED 11



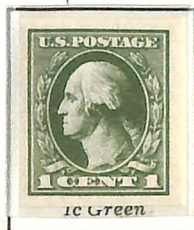
20-



BECAUSE OF THE WORLD WAR IT BECAME DIFFICULT TO OBTAIN ADEQUATE SUPPLIES OF NECESSARY DYE
COLORS FOR THE MAKING OF INKS SUCH AS HAD BEEN PREVIOUSLY USED. THEREFORE THE
LITHOGRAPH OFFSET PROCESS WAS ADOPTED FOR POSTAGE STAMPS OF THE
ONE, TWO AND THREE CENT VALUES.

1918-20

OFFSET PRINTING—UNWATERMARKED
IMPERFORATE



531 (1 55)



534 (2 85)



535 (1 75)

1919

OFFSET PRINTING—UNWATERMARKED
PERFORATED 12 1/2



536

1155-



Box # 2273 - Part II - 2MM spacing