

HAITI

Paquebot Mail

PUERTO RICO

Québec



MONSIEUR L.-H. REINE

LE HAVRE

Straight line "Paquebot" marking
Backstamped "San Juan Transit 9 August 1907"
Received in Le Havre 26 August 1907



HAITI
Paquebot Mail

PUERTO RICO

F. M. ALTIERI
CAP HAÏTIEN
Haïti



Monsieur

L. H. Reine

12 Rue du Champ de Foire

Le Havre

Straight line "Paquebot" marking of Puerto Rico
Received in Le Havre 5 September 1907



HAITI
Paquetbot Mail

PUERTO RICO



Straight line "Paquetbot" marking
Backstamped at San Juan 8 December 1907



Paquetbot
San Juan



Circular
San Juan, P.R.

HAITI
Paquebot Mail

PUERTO RICO

PAQUEBOT
SAN JUAN. P. R.



Armée Haïtienne — Le Défilé
"La crème"

F. D.

"Paquebot / San Juan P.R." from Cap Haïtien, Haïti
14 October 1911

HAITI

Paquetbot Mail

BEING AN ISLAND COUNTRY ALL OF HAITI'S FOREIGN BOUND MAIL, BEFORE THE ADVENT OF THE AIRPLANE, WAS CARRIED ON SHIPS. SOME OF THIS MAIL WAS POSTED ABOARD THE SHIP DIRECTLY WITHOUT PASSING THROUGH THE HAITIAN POST OFFICE. BY UPU REGULATION THIS MAIL WAS TO RECEIVE A "PAQUETBOT" MARK AND/OR A REGULAR POSTMARK OF THE PORT OF ARRIVAL WHEN DEPOSITED IN THE POST OFFICE WHERE THE MAIL WAS FIRST DISEMBARKED.

PAQUETBOT MARKINGS APPLIED TO HAITIAN STAMPS ARE KNOWN FROM A NUMBER OF COUNTRIES.

JAMAICA



Kingston, Jamaica - Paquetbot



Boxed "Paquetbot"
Used at Kingston, Jamaica



Carried on HAPAG
Atlas Service

HAITI

Paquebot Mail

CANAL ZONE



Envelope of Panama Lines
Posted aboard ship enroute Cristobal, Canal Zone
Received Cristobal 21 September 1932

HAITI

Paquebot Mail

CANAL ZONE

Frank E. Greene
15300 Troester Ave
Detroit (5) Mich



Mr Marshall H Wood
344 Brookside Drive
Smithtown Branch, NY

PANAMA LINE
POSTED ON THE HIGH SEAS

This cover was posted aboard a southbound ship of the Panama Line. It was put off the ship at Cristobal, Canal Zone and the stamps received the Cristobal paquebot cancel on 4 March 1954. The balance of the trip to New York was probably completed on a northbound ship of the same line.



PAQUEBOT

HAITI

Paquetbot Mail

BEGINNING IN 1926 AND CONTINUING INTO THE 1930'S, A SLIGHTLY DIFFERENT TYPE OF CANCELLING DEVICE WAS USED IN THIS SERVICE.

THE CIRCULAR CANCEL STILL SHOWED THE DATE AND DIRECTIONAL INDICATION IN THE CENTER, WITH A NUMERAL KILLER, BUT THE INSCRIPTION AROUND THE CIRCLE READ "U.S. SEA POST CANAL ZONE—S.S. ANCON". THERE WERE ONLY 3 VESSELS IN THIS SERVICE—THE S.S. ANCON AND THE S.S. CRISTOBAL AND THE S.S. PANAMA.

EIGHT BAR KILLERS
WITH NUMBER INSERTS
ASSIGNED



S.S. CRISTOBAL "1"
S.S. ANCON "2"
S.S. PANAMA "3"



North to New York on the S.S. Ancon
1 June 1927

Paquebot Mail



Carte Postale.

Postale. *New*
S. U. S. MAR 13 1926
S. ANCON

Frau Emma Meyer

Зачем

Mathilde 84

Clauzigne

Carte 1

To Germany via New York—S.S. Ancon
18 March 1926

HAITI

Paquebot Mail

HAITI.
Nature et Civilisation.

Yes, they
really have
flivers in Haiti.
We were out in
a Hudson this
morning & covered
the whole
Island. Love Dot



Mr. Fg. Berlinicke Jr.
500 Wyanoke Ave
Baltimore
U.S.A. Md.

One of few postings on "S.S. Panama"
North to Baltimore, Md.
27 May 1926

CARTE POSTAL

niece
We want you
to meet some
of our new
friends
Mr & Mrs
T. Sev.



Louisville
Ky
U.S.A.

North to U.S.A. On "S.S. Cristobal"
20 March 1927

HAITI
Paquetbot Mail

WEST INDIA OIL COMPANY
PORT-AU-PRINCE, HAITI



*Yale University Press,
New Haven,
Connecticut,
U. S. A.*

PAQUEBOT

On this cover, the time was substituted for direction
29 April 1928

Note the small Paquetbot marking on these covers

RETOURNEZ S. V. P. APRES CINQ
JOURS A
LA BANQUE ROYALE DU CANADA
PORT-AU-PRINCE, HAITI.



BANK OF NEW YORK & TRUST CO.,
44 WALL STREET,
NEW YORK CITY, U.S.A.

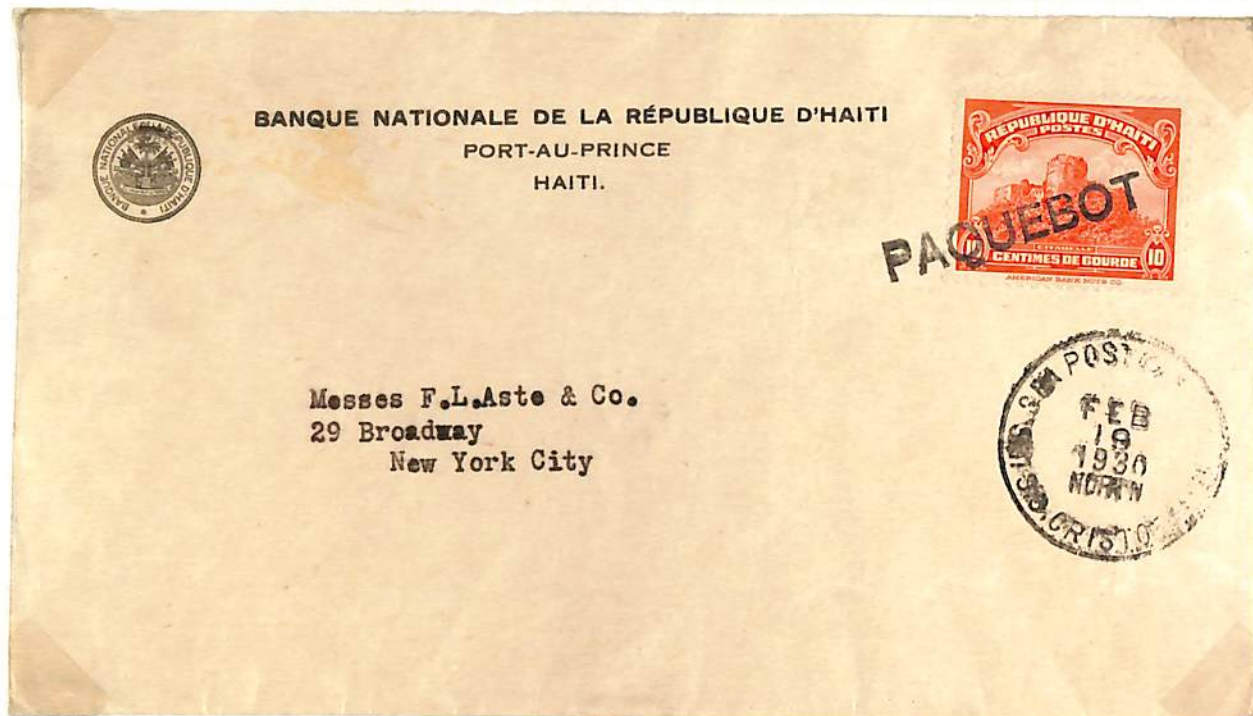
PAQUEBOT

The killer numeral "2" was used on the S.S. Ancon
25 July 1928

HAITI
Paquetbot Mail



Only rarely was U.S. bound mail put aboard southbound ships
as was the case with this cover
21 April 1929



Interesting cover with large Paquetbot cancelling stamp
19 February 1930

HAITI
PAQUEBOT MAIL



S.S. CRISTOBAL

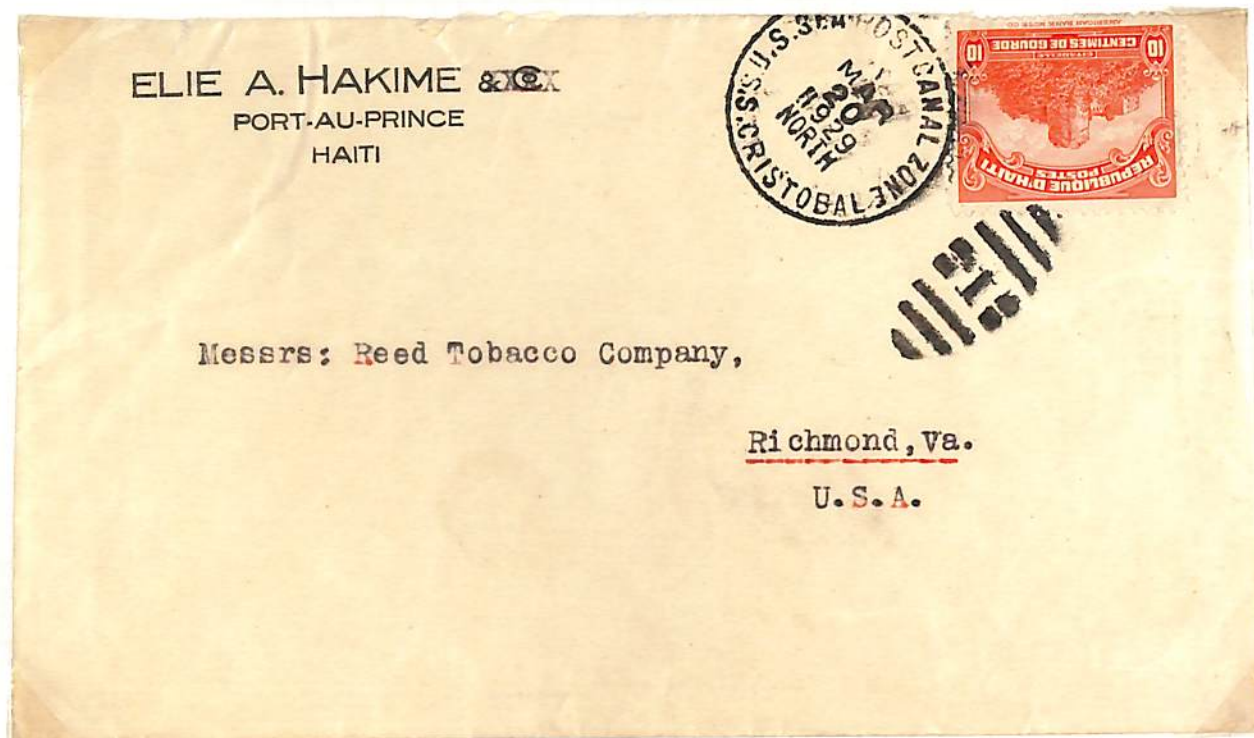


North to the U.S. on the "S.S. Cristobal"
20 March 1929

HAITI
Paquebot Mail



Posted aboard southbound "S.S. Ancon" to Paris, France
23 July 1930
New York paquebot marking



Posted aboard northbound "S.S. Cristobal" to U.S.A.
20 March 1929

HAITI

Paquebot Mail



BANQUE NATIONALE DE LA RÉPUBLIQUE D'HAÏT
PORT-AU-PRINCE
HAÏTI.



...ust. Company,



L. R. Stedthiller
134 Linden Ave.
Clark, N.J.

FRANCIS E. LOCY
FIELD HOSPITAL
1st Brigade, U. S. Marines,
Port au Prince, Haiti.



Mr R. E. Backe
15 John St.,
New York, N.Y.

North to the U. S. on the S. S. Cristobal
6 August 1930

HAITI
Paquebot Mail

Lucie Bailly
% ARMOUR AND COMPANY
PORT-AU-PRINCE
HAÏTI.



Montgomery Ward & Co.

Chicago
Illinois

S.S. Cristobal

26 January 1929 to Chicago, Illinois via New York

North to the U.S. on the "S.S. Cristobal"

ROYAL NETHERLANDS STEAMSHIP COMPANY
(Compagnie Royale Néerlandaise de Navigation)

J. B. VITAL, Agent. - JACMEL (HAÏTI).



Koninklijke Nederlandsche Stoomboot Maatschappij,

Het Scheepvaarthuis

108-119, Prins Hendrikkade,

AMSTERDAM :-

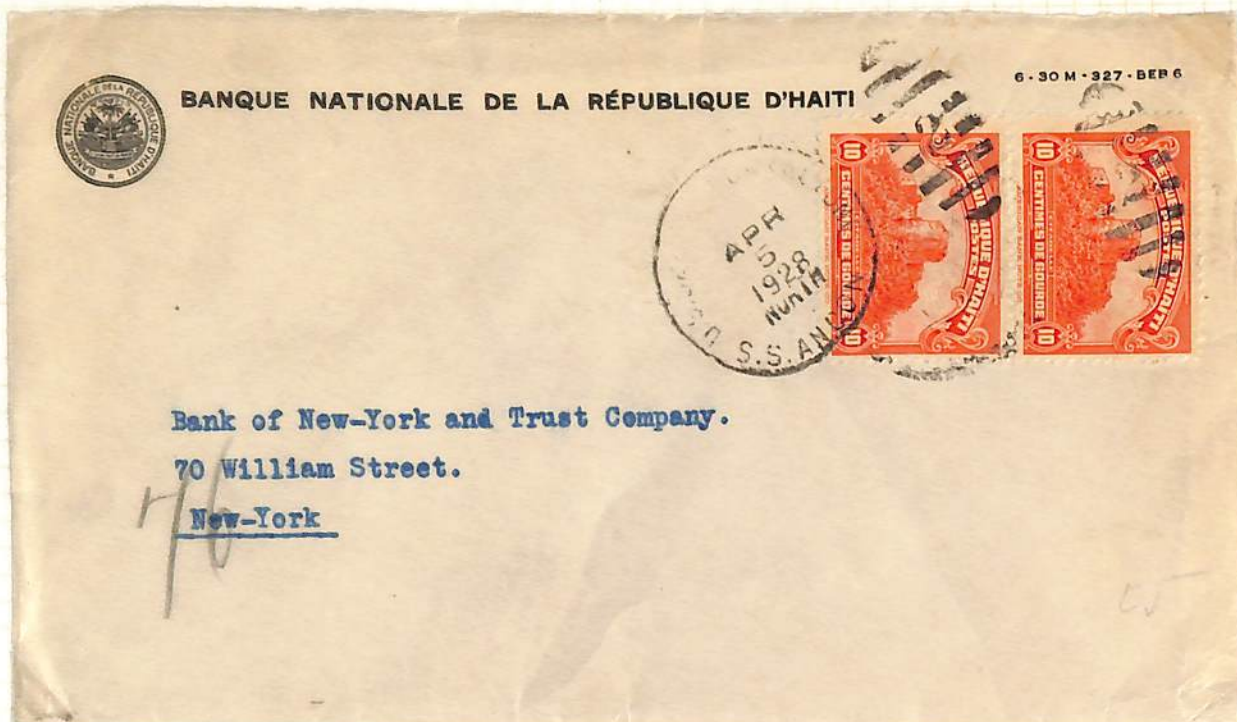


VIA NEW YORK

(Netherlands)

18 April 1928 to Netherlands

HAITI
Paquebot Mail



North to New York on "S.S. Ancon"
5 April 1928

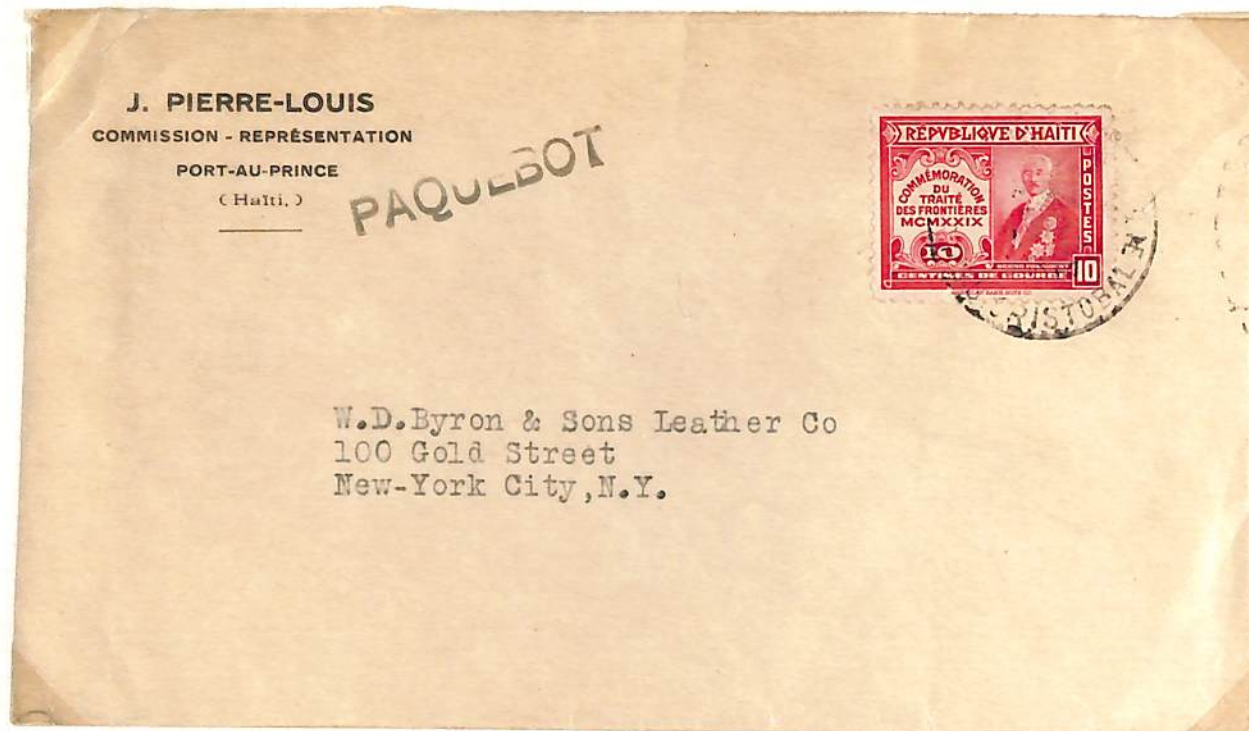


Uncommon southbound posting on "S.S. Ancon"
23 July 1930

HAITI
Paquebot Mail



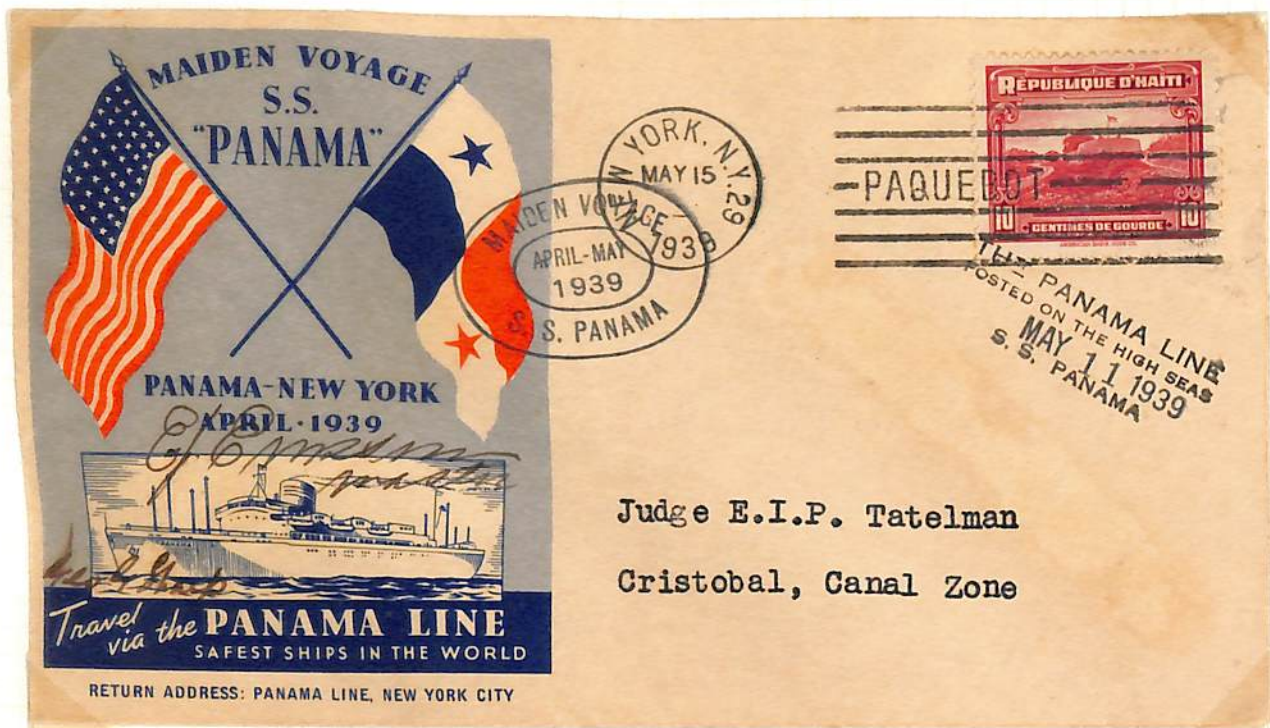
North to U.S.A. on "S.S. Ancon"
8 January 1930



North to New York on S.S. Cristobal
Date Indecipherable

HAITI

New York Paquebot Mail
1929



Carried on maiden voyage of the S.S. Panama
Autographed by ship's master
Disembarked at New York
15 May 1939



Picture post card of S.S. Panama

HAITI
Paquebot Mail

Maiden Voyage - S. S. Ancon

June - July 1939

This card is enclosed in a special cover carried on the maiden voyage of the S. S. Ancon, of the Panama Line. Because of her all-steel construction and virtually sinkless hull, the new 493-foot, 10,000 ton liner is hailed by engineers as one of the safest ships in the world. Like her sister, the Panama, she is also a smokeless ship.

The Ancon is the second of three sister ships entering service this year between New York and the Canal Zone, via Haiti. She is named in honor of the town of Ancon, a favorite residence of Canal employees, near Panama City.

The President of the Line, Brig. Gen. Clarence S. Ridley, is also the Governor of the Panama Canal Zone.

Announcing Maiden Voyage Cover - S. S. Cristobal

August 1939

The Panama Line takes pleasure in announcing that the maiden voyage of the S. S. Cristobal sister of the Ancon, will be marked by a special cover. The Cristobal is scheduled to make her initial sailing from New York in August.

She is the last of the trio of sister ships built for the Panama Line.

The cost of each cover is 15 cents. To secure one or more, return this card with stamps or coin to the Panama Philatelic Department, 120 Broadway, Room 2103, New York City, N. Y.

(Print) Name.....

Street.....

City.....State.....

I enclose.....for which send me.....covers

Card carried in cover on maiden voyage of new S.S. Ancon in 1939.
A new 10,000 ton steel ship replaced the original ship of the same name.

HAITI

Paquebot Mail



8 July 1939
On southbound voyage

Covers carried on Maiden Voyage
of new "S.S. Ancon"
New York to the Canal Zone
June - July 1939



26 July 1939
On northbound voyage

HAITI
Paquebot Mail



Carried on the Maiden Voyage
of the S. S. Cristobal
22 August 1939
On southbound voyage

Note misspelling of "Cristobal" as "Cristobol" in Maiden Voyage cachet



Carried on Maiden Voyage
New York paquebot cancellation
23 September 1939
On northbound voyage

HAITI
Paquebot Mail

PANAMA LINE
POSTED ON THE HIGH SEAS

S. S. PANAMA

PAQUEBOT

Prints Tryeck Impresses Druckwerk



Howard Neill
2072 Woodlawn
Glenside, Pa., U. S. A.

Posted aboard "S.S. Panama"
Enroute Panam to U.S.A.
Stamp cancelled Port Au Prince
7 November 1956

MAIDEN VOYAGE . . . S. S. ANCON
June - July, 1939
NEW YORK • CANAL ZONE



Travel via the **PANAMA LINE**
SAFEST SHIPS IN THE WORLD

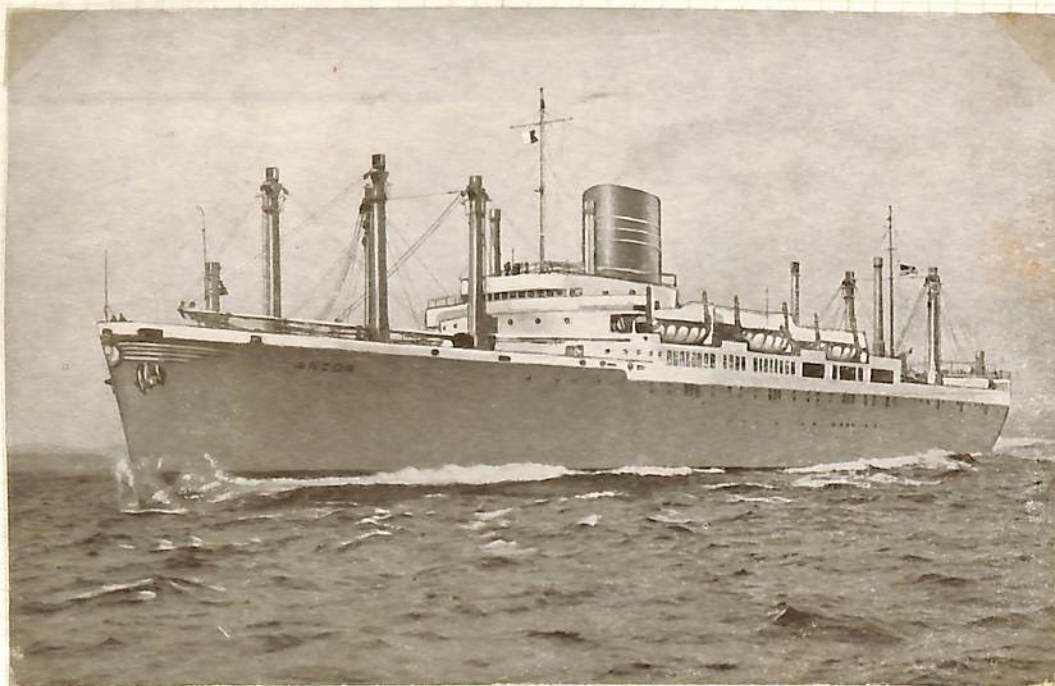
POSTED ON THE HIGH SEAS
THE PANAMA LINE
S. S. ANCON
PORT-AU-PRINCE



*Mr. Porra
Postmaster, Pedro Miguel
C. 3.*

Uncommon southbound to Canal Zone
NOT Maiden Voyage
July 1939

HAITI
Paquebot Mail



Picture postcard of the "S.S. Ancon"



S. S. "ANCON", PANAMA LINE
POSTED ON THE HIGH SEAS

Walter H. Van Zuilen
3500 Fillmore Ave.
Brooklyn 34, N. Y. U.S.A.

Posted aboard "S.S. Ancon" on the High Seas
Cancelled New York 7 April 1953

HAITI
Paquebot Mail



Post card posted on Panama Line on High Seas
Cancelled Port Au Prince
6 December 1953



Posted aboard "S. S. Ancon"
Disembarked at Port Au Prince
2 October 1954

HAITI

Paquebot Mail

Miscellaneous Lines

COLOMBIAN STEAMSHIP COMPANY

The Colombian Line began operations in April 1923 with 5 small ships, built in Great Lakes shipyards and known as "Lakers." They took over the West Indies cargo route of the Clyde Line. When the line received a 10 year mail contract in 1930 they built two new ships, the "S.S. Colombia" and "S.S. Haiti" at Newport News and chartered a third, the "S.S. Pastores" from United Fruit. The ships operated weekly for cargo and passengers from New York with calls at Port Au Prince, Kingston, Porto Colombia, Cartagena and Cristobal. The "S.S. Pastores" was replaced by the "T.E.L. Jamaica" in December 1937.

No paquebot cancels are known from the original 5 purchased ships, except the "S.S. Martinique" which continued in service until the late 1930's, some years after the other purchased originals were retired. Paquebot markings are known from all the later ships and cachets from maiden voyages of "S.S. Combia" and "S.S. Haiti."



The "S.S. Jamaica" used a double circle marking similar to those of the United Fruit Company ships during its short service, instead of the foregoing "Mailed At Sea" type. All Colombian Line operations ended abruptly in April 1938 with ships returned to the lessors.

SHIP	CAPTAIN	MAIDEN VOYAGE BEGAN AT N.Y.C.	MAIDEN VOYAGE ENDED AT HAITI	LAST VOYAGE ENDED AT N.Y.C.
Colombia	David T. Smith	November 11, 1932	November 28, 1932	April 18, 1938
Haiti	Lawrence Long	December 22, 1932	December 26, 1932	April 4, 1938
Pastores	William J. Close	December 29, 1932	—	December 27, 1937
Jamaica	William J. Close	December 30, 1937	—	April 10, 1938

HAITI
Paquebot Mail



Cancelled at Port Au Prince 11 February 1938 and
put aboard "T.E.L. Jamaica" of Colombian Line 13 February 1938



Carried on Maiden Voyage of "S.S. Haiti"
Put off ship at Port Au Prince
26 December 1932

HAITI
Paquebot Mail

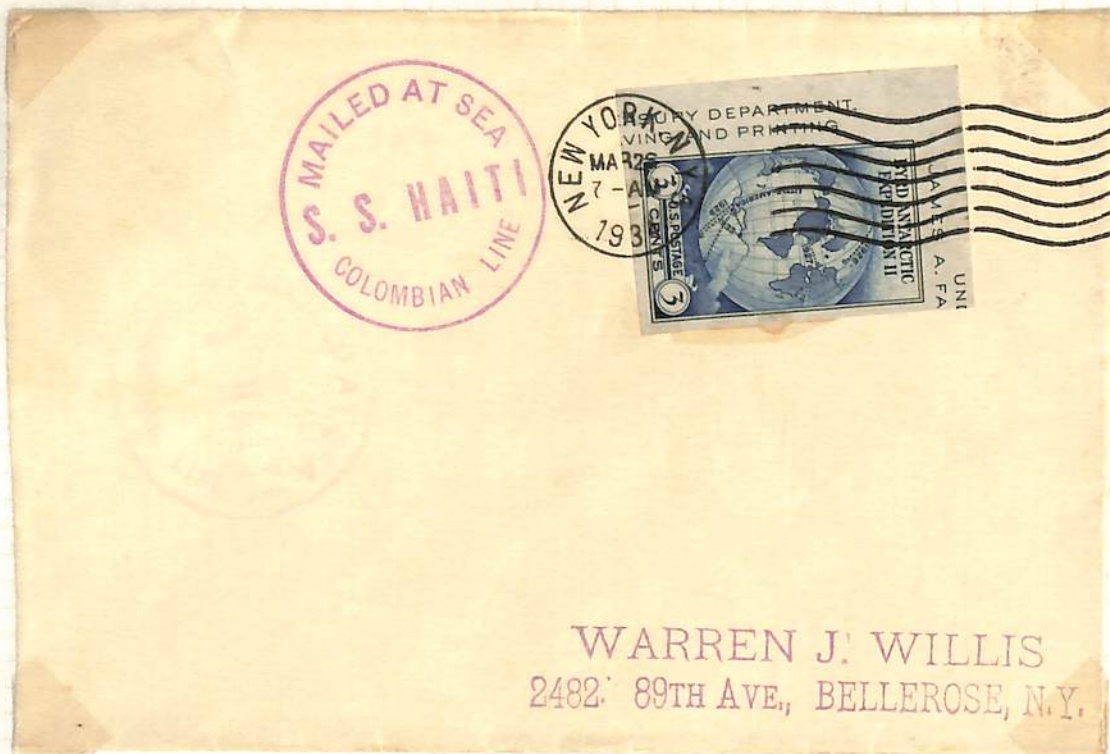


Unusual usage U.S., Haiti, Jamaica and Colombia stamps
Aboard "S.S. Haiti"
14 March 1934



Maiden voyage S.S. Haiti
Put off ship at Kingston, Jamaica
27 December 1932

HAITI
Paquebot Mail



Disembarked at New York 26 March 1934

MAILED ABOARD THE "S.S. HAITI" OF THE COLOMBIAN LINE



Put off ship at St. Thomas, Virgin Islands on 14 March 1934

HAITI
Paquebot Mail

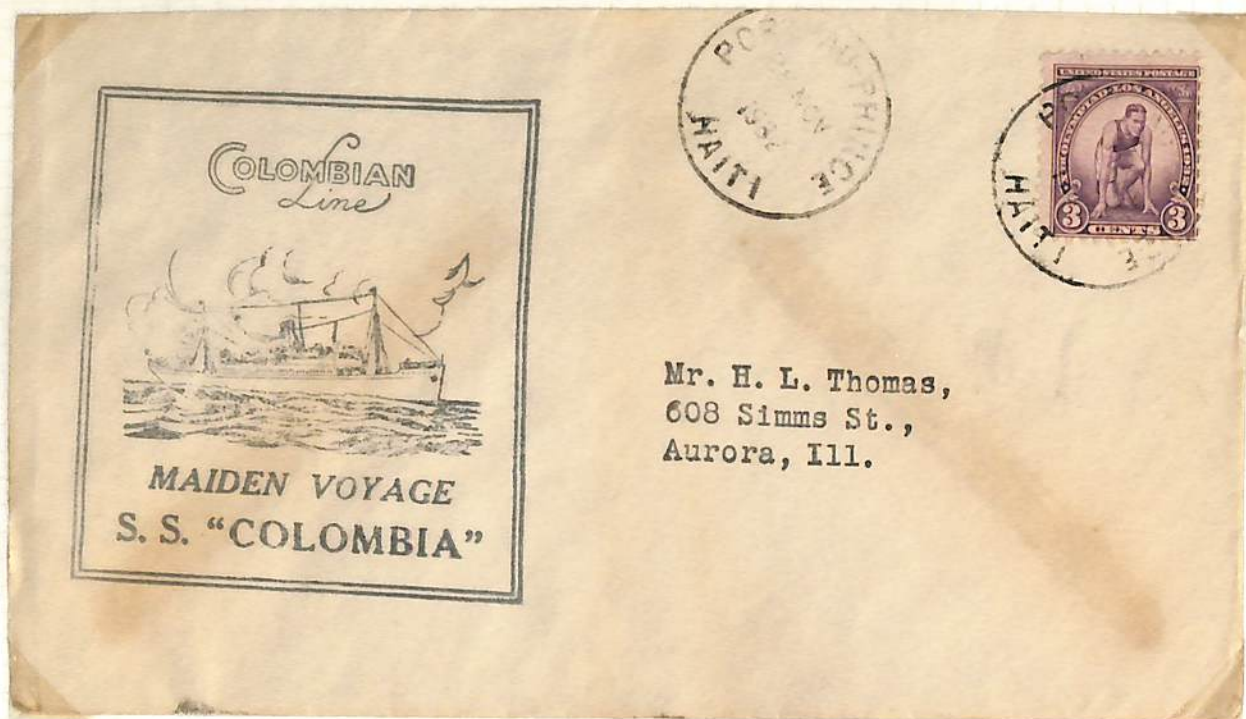


Posted aboard Colombian Line "T.E.L. Jamaica" 25 March 1938
Put off at Port Au Prince 6 April 1938
Backstamped New York 12 April 1938



Mailed at sea aboard "S.S. Haiti"
U.S. postage on reverse cancelled at Kingston, Jamaica
September 1937

HAITI
Paquebot Mail



Mr. H. L. Thomas,
608 Simms St.,
Aurora, Ill.

Carried on Maiden Voyage of "S.S. Colombia"
Put off ship at Port Au Prince
28 November 1932



Walter T. Atkinson Jr.
121 Butler Road
Blyden, Maryland

Carried on S.S. Pastores of the Colombian Line
Posted with U.S. postage cancelled at Port Au Prince 16 December 1935
Purser marking 18 December 1935

HAITI
Paquebot Mail



New Colombian Line Steamers "COLOMBIA" and "HAITI"

Picture post card of S.S. Colombia

THE TEXAS COMPANY [CARIBBEAN] LT
Angle des Rues des Césars et du Quai
PORT-AU-PRINCE, HAITI



Spain

partment

5 East 42nd St.

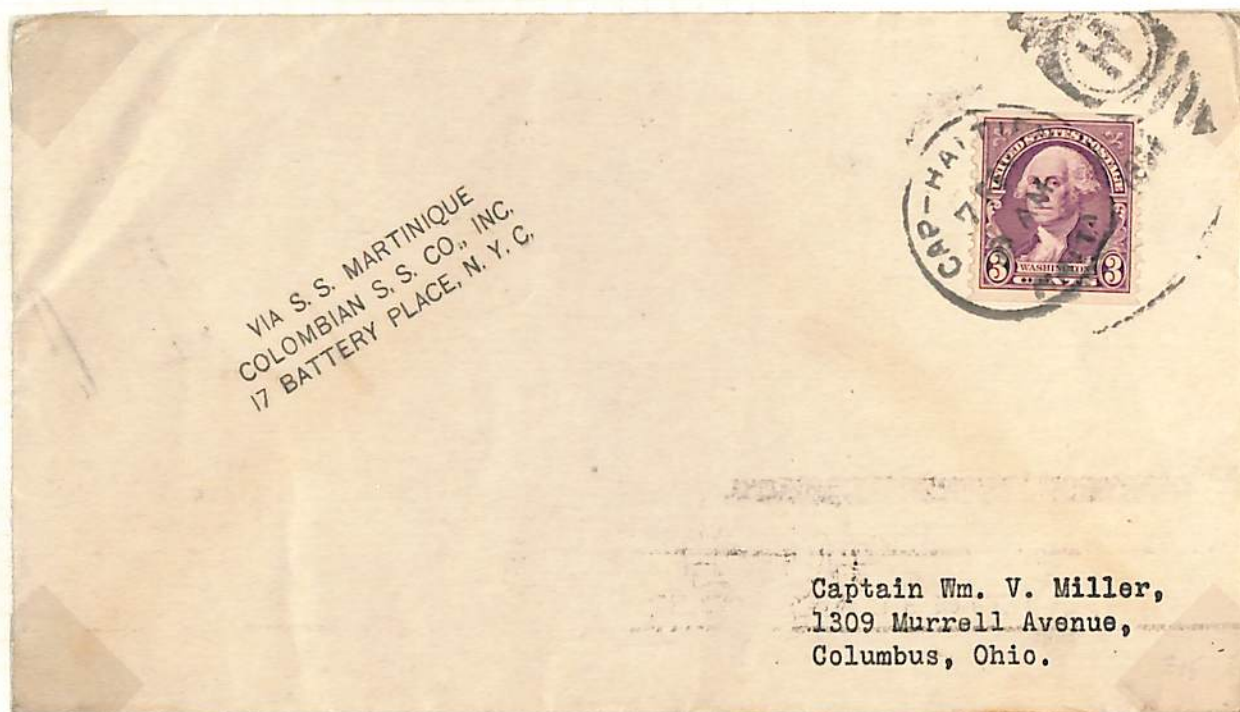
New York, NY

Posted aboard S.S. Pastores
Port Au Prince to New York
22 May 1933

HAITI
Paquebot Mail



Carried aboard "S.S. Martinique"
Put off at Cap Haitien
11 March 1934



Posted aboard "S.S. Martinique" of Colombian Line
Put off ship at Cap Haitien 7 February 1934
Also backstamped Port Au Prince 10 February 1934