

AUG. 20, 1909



74  
b9

30. =

*11 Zucayas*

APR. 22, 1909

L A

HACIENDA COMPANY

BUFFALO . N . Y .

E . U . A .





VIA ZACAPA  
CERTIFICADO

DEC. 2, 1908

8590



Messieurs

Theodore Champion  
13, Rue Provis 13,



R  
CORREOS DE EL SALVADOR  
Nº 8748  
SAN SALVADOR

EMILIO FERRER  
SAN SALVADOR  
República del Salvador  
C. A.



Paris  
France

TSVP

Via Zacapa New Orleans

R  
República de El Salvador  
Santiago de María  
Nº 934



Don AUG 6, 1910

Jakob Hüliger

Drosselweg 13

Berna

14 gm



SANTIAGO DE MARIA TO SHITZ.  
FRANKINA 135.

UNITED STATES OF AMERICA.  
R NEW YORK, N. Y.  
No. 42390 EXCHANGE.



MARCH 11, 1908



Chas. Astralinger & Co.<sup>o</sup>



Mich., U. S. A.



Mr

SANTIAGO DE MARIA



CORREOS DEL SALVADOR  
No 115  
Santiago de Maria

FEB 10, 1908

441

The

Geo L Squier Mfg  
55966



Buffalo N.Y.  
24512 wa

DEC. 23, 1908



信源興寶號  
金山大埠  
寄

Sr. Mr

Shen Yuen Hong Co  
10393

CORREOS DEL SALVADOR  
No 9318

249 Dupont Street.

San Francisco California U. S. A.



# El Salvador

## Figueroa Issue

Printed by Carlos Parraga

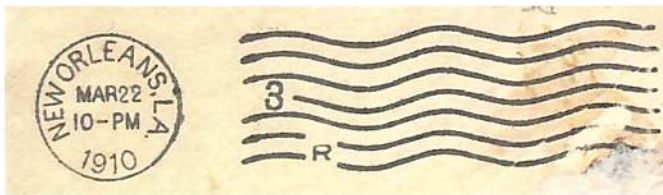
Perf 11.5

1910



San Salvador (?) March 1910 to U.S.A.

Proper single letter rate of 17c per 15g



New Orleans Transit Marking



Lowell, MA Receipt Mark

OFFICIAL MAIL!

HOSPITAL ROSALES  
San Salvador C. A.

127



*Señores Johnson & Johnson*



7

*100 William St.  
New York*



81551

SHIELD OUTF. OMITTED  
ON ALL STAMPS!





SCHERNIKOW ESQ.,

# 42 BROADWAY,



Philatelic cover to Consul Schernikov from San Salvador to New York City franked with Scott 352D, 354, 367a, 367e, 367g, 358, 361. Note double overprints, double shields, tied to cover with gridded '5', Miller, bar type CDS dated April 8, 1908

José Antonio Cañas G.  
SAN SALVADOR  
El Salvador  
G. A.

37409

Señor don 36.90

Ernesta Schernikov

DIC 2 1908

VIA ZACAPA Y PUERTO-BARRIOS  
R No. 8767  
SAN SALVADOR



R





VIA ZACAPA.

ERNEST





José Antonio Cañas G.

SAN SALVADOR  
EL SALVADOR  
C. A.

July 9, 1909



Señor don

Ernesto Schernikow,

42 Broadway.

Nueva York.

RRR!  
359w



X82-77

José Antonio Cañas G.

SAN SALVADOR  
El Salvador  
C. A.

Oct. 13, 1908

Fr. Dni.

*with 820441*

Rafael Morano.



ciudad

imperf. between

1001



José Antonio Cañas G.  
SAN SALVADOR  
El Salvador  
G. A.

rec!



VIA ZACAPA

Philatelic cover to Consul Schernikov from San Salvador to New York City franked with Scott 356 & 364 and pairs of 358 and 374. Note the latter are very rare on cover and were valid only on September 16, 1909. This date is shown by the CDS. Stamps tied to cover with ringed star cancel, also registration stamp. On reverse New York arrival cancel. Via Zacapa and Barrios notice.

CONSUL OF SALVADOR



42 Broadway  
New York

29640



1909

# El Salvador

National Palace Issue

Perf 11½

Unwatermarked



Overprint  
Inverted



San Salvador 15 September 1909 Local  
DAY OF ISSUE  
Correct 2c drop letter rate



# El Salvador

National Palace Issue

1909

Perf 11½

December Provisional Issues



Reverse of card



SEPT. 22, 1911

(R)



TOTAL FRANKING 404

EL SALVADOR 84.36

From Josef Müller

Kirchengasse 17

17 g

Wien VII/2



Austria.

SEPT 22, 1911

(R)

22g

SAN SALVADOR

From 8742

Josef Müller

Kirchengasse 17 15



Wien VII/2

Austria.



# El Salvador

## National Palace Issue

### Unwatermarked

1915

Perf 11½

749 SALVADOR (1915) 1915 National Palace "1915" opt issues cover collection on pages incl. postage due, "Inconnu?Desconocido" marking, via Zacapa, couple of censors, regd., etc. c20 covers



San Salvador 27 November 1915 to U.S.A.  
As only 3c on the single letter rate (17c) was paid it was charged 28c due (twice the deficiency) on the arrival.



Krag type New Orleans transit marking.



# El Salvador

National Palace Issue

1915

Perf 11½

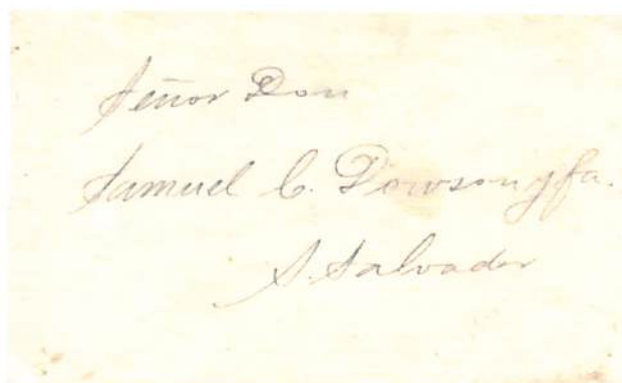


Salcoatitan 30 Dec 1915  
to San Salvador  
The Stamp missing date "1915" and  
imperf was not regularly issued.

1c carte de visit rate



Cancellation



Samuel Dawson  
had been the  
"Interventor de  
Correos"  
(Assistant Post  
Master General)



# El Salvador

National Palace Issue

Perf 11½

1915



1c "Carte de Visit" rate to Nicaragua

Note "Vapor City of Para"



Steamship  
City of Para



# El Salvador

National Palace Issue

Printed by Carlos Parraga

1915

Perf 11.5



San Salvador 16 January 1916 to England

5c postcard rate



Cañada del Chulucos - Morazan, Rep. del Salvador.

Reverse



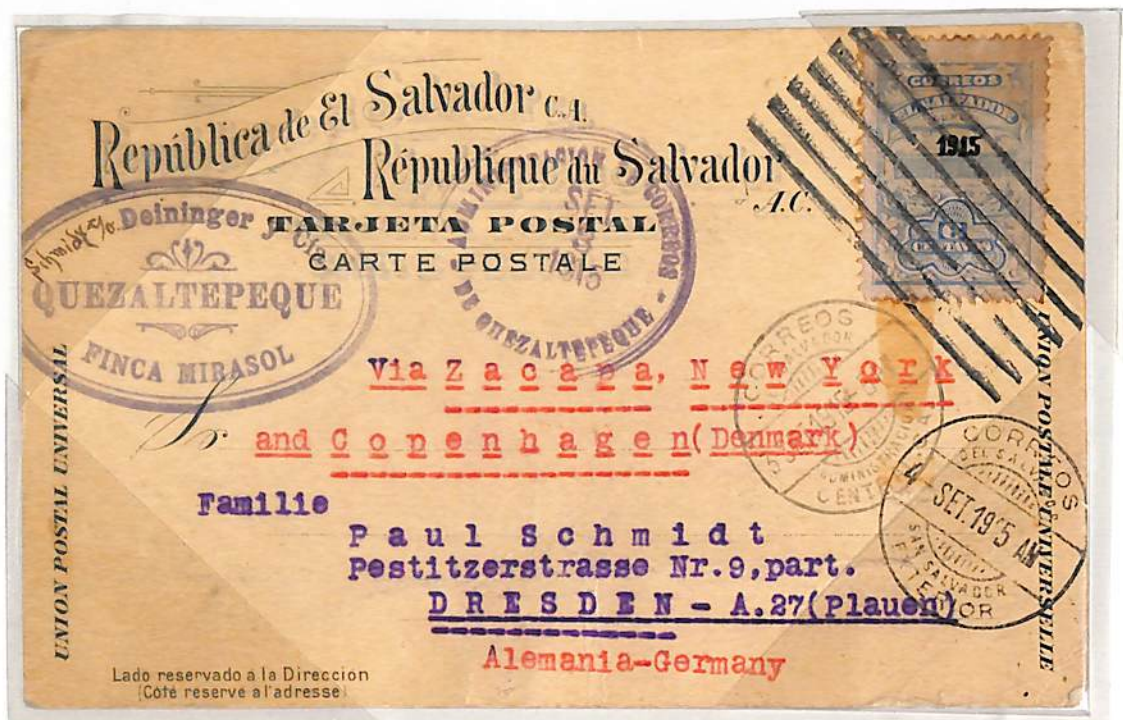
# El Salvador

National Palace Issue

Printed by Carlos Parraga

1915

Perf 11.5

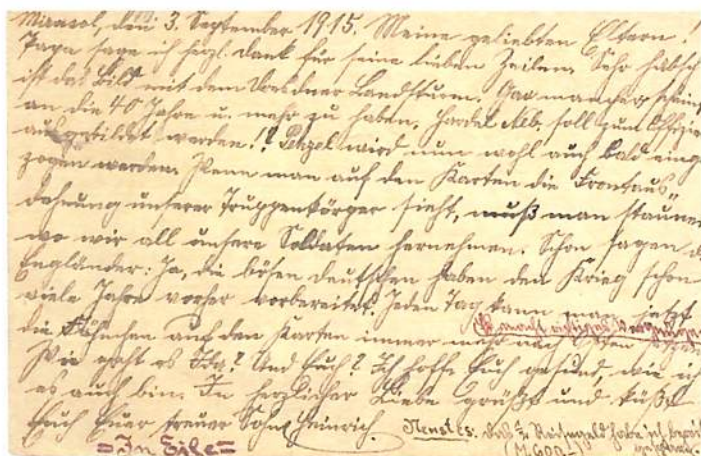


Finca Mirasol in Quezaltepeque 3 September 1915 to Germany

Note routing of Via Zacapa, New York and Copenhagen.

The 6c letter rate was charged because of the writing on the back.

The card rate was 5c.



Reverse—Headed “Miracal the 3rd of September 1915.

This probably was a lodge or tenement building



# El Salvador

National Palace Issue

Perf 11½

1915



San Salvador 1 April 1916 to Guatemala

Central America rate same as domestic letter rate

Note two line "Inconnu / Desconocido" (Unknown)



Backstamped



# El Salvador

National Palace Issue

Printed by Carlos Parraga

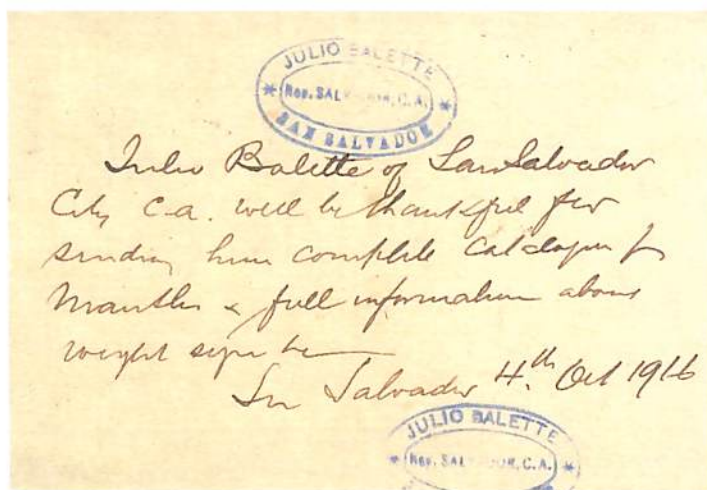
1915

Perf 11.5



San Salvador 7 October 1916 to USA

The 6c letter rate, paid by 5c adhesive and 1c postal card, was charged because of the writing on the back.



Reverse



# El Salvador

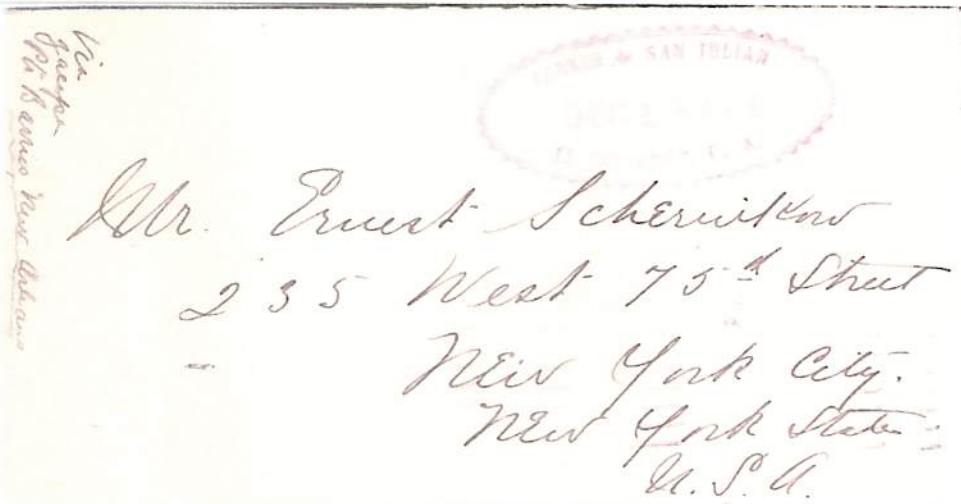
National Palace Issue

Perf 11½

1915



San Julian December 18, 1916 to U.S.A.  
Correct 17c single letter rate



Front of cover



Disturbance due to embossed seal



# El Salvador

National Palace Issue

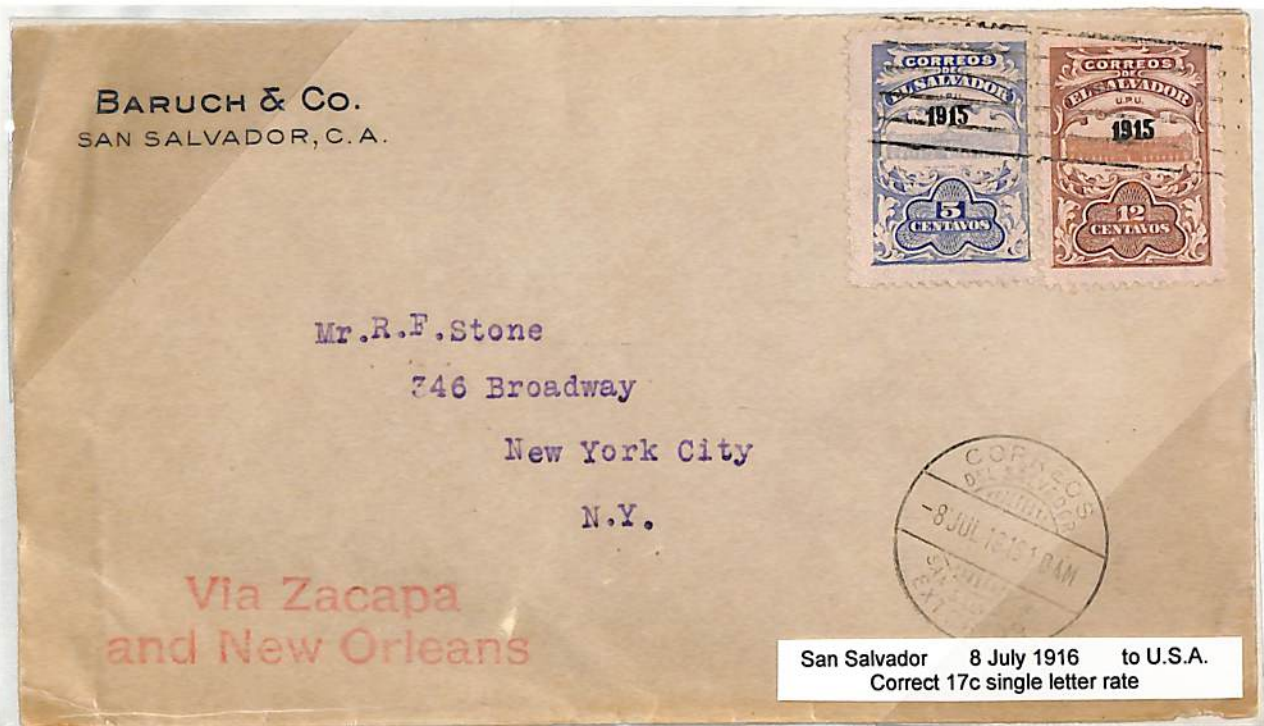
Unwatermarked

1915

Perf 11½



San Salvador 5 August 1916 to U.S.A.  
Correct 17c single letter rate



San Salvador 8 July 1916 to U.S.A.  
Correct 17c single letter rate



# El Salvador

1915

National Palace Issue  
Unwatermarked

Perf 11½

Paper with pale lilac dots



San Miguel February 3, 1916 to U.S.A.

Proper 17c single letter rate

The "Mineral San Sebastian" was one of two gold mines established in the late 19<sup>th</sup> Century by Charles Butters, who had pioneered the cyanide process for mineral separation.

Mineral San Sebastian was located on the hacienda San Sebastian near San Miguel



Backstamped



Route to port



# El Salvador

National Palace Issue

Unwatermarked

1915

Perf 11½



Nueva San Salvador (Santa Tecla) August 18, 1916 to U.S.A.  
Proper 17c single letter rate



Backstamps





# El Salvador

National Palace Issue

Unwatermarked

1907

Perf 11½



San Salvador 1916 to U.S.A.  
17c per 15g single letter rate  
Diplomatic Mail so cancelled in Washington, D.C. on May 3, 1916.  
Note Corner Card "Legation of the United States of America"



# El Salvador

National Palace Issue

Unwatermarked

1915

Perf 11½



Santa Ana April 15, 1916 to Switzerland  
Proper single letter rate for up to 15g.  
Notes inscription "...then by Neutral Steamer."  
French Censor tape and marking



Reverse



# El Salvador

National Palace Issue

1915

Perf 11½



San Salvador 1 July 1916 to Switzerland  
Correct 17c "via Zacapa" rate



Front



# El Salvador

National Palace Issue

1915

Perf 11½



San Salvador 14 October 1916 to U.S.A.  
Note return address

Single letter rate for first 15 grams



# El Salvador

National Palace Issue

1915

Perf 11½



San Miguel 21 March 1916 to Italy



Back

Although 17c was the rate for this 8g cover sent via Zacapa the sender thought it needed the additional 5c for this route. This had not been the case since 1912.

# El Salvador

1915

National Palace Issue

Perf 11½



San Salvador June 16, 1916 to England

Single Letter Rate	12c
Via Zacapa	5c
Registration	10c
Acknowledgement of Receipt	5c
Total	32c

(13c stamp missing)



Front

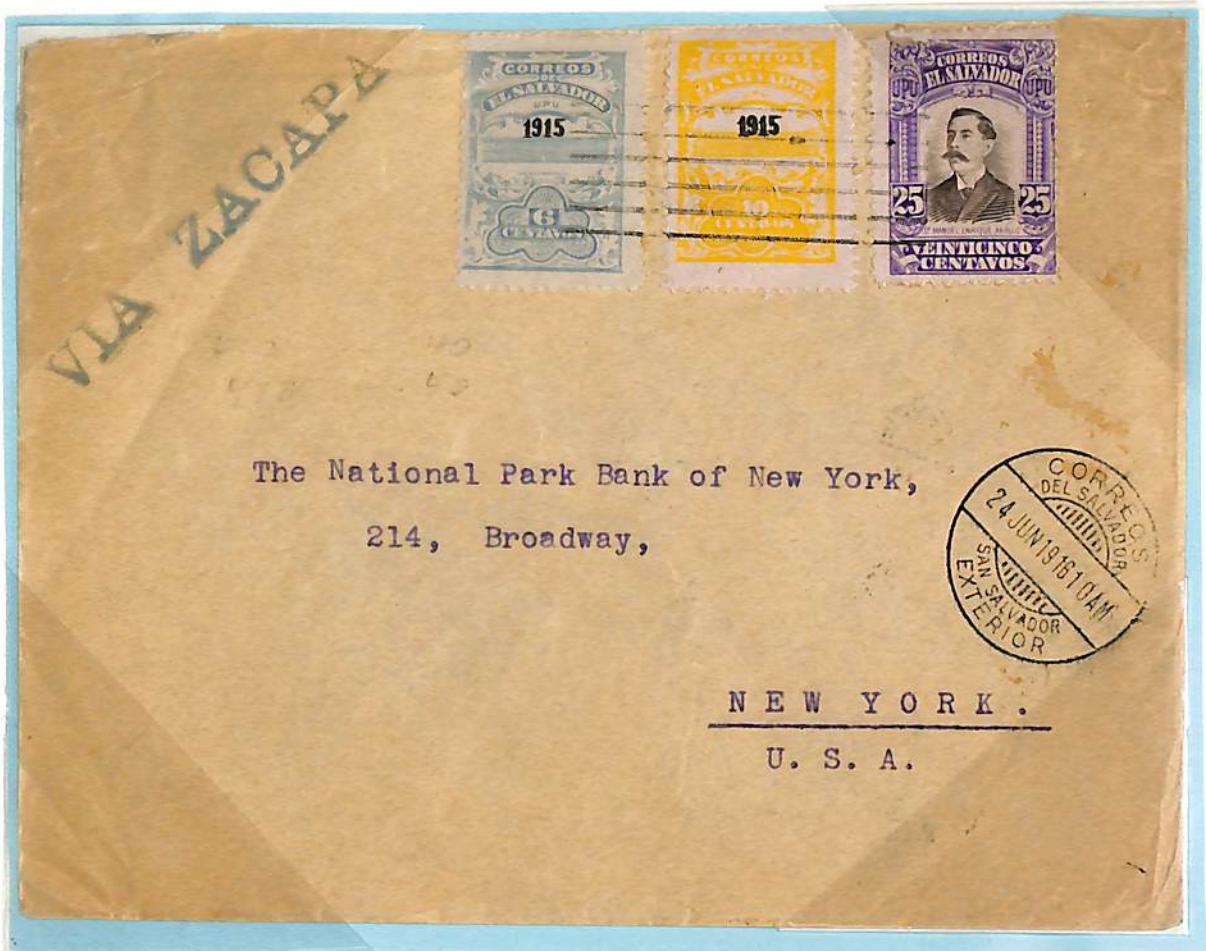


# El Salvador

National Palace Issue

1915

Perf 11½



San Salvador 24 June 1916 to U.S.A.



Backstamped

17c per 1st 15g	17c
2x 12c per add'l 15g	24c
Total	41c

# El Salvador

National Palace Issue

Perf 11½

1915

Unwatermarked



San Salvador December 22, 1917 to U.S.A.

Note this is underpaid 12c since the rate was 17c for the first 15g and 12c for each additional 15g. The cover is marked as being 19g.

Letter rate of 17c per 15g	17c
Registration	10c
Acknowledgement of Receipt	5c
<b>Total</b>	<b>32c</b>



Backstamped



# El Salvador

National Palace Issue

1915

Perf 11½

Paper with pale lilac dots



San Salvador  
 May 29, 1916  
 to USA

17c for 1st 15g	17c
6x 12c for each	
add'l 15g	72c
Registration	10c
AR	5c
<b>Total</b>	<b>104c</b>

Note Misplaced vignette on 2c. This proves stamps were printed in two stages even though this is a single color stamp



Note sender:  
 Samuel A.  
 Dawson