

ABYSSINIA (Ethiopia)

Formerly a Monarchy in Northeastern Africa. Now a part of Italian East Africa Colony. CAPITAL—Addis Ababa.
 MONETARY UNIT—the Thaler.

1894



1909

93

1919



1919



1931



1928



ABYSSINIA (Ethiopia)

1930-31



AIR POST STAMPS

1931



POSTAGE DUE STAMPS

1896



ADEN - 1939-48



10-27a

- AIDRUS MOSQUE 1/2A, 2A
- CAMEL CORPSMAN 3/4A, 5R
- ADEN HARBOR 1A, 2R
- ADENESE DHOW 1 1/2A, 1R
- MUKALLA 2 1/2A, 8A
- CAPTURE OF ADEN 3A, 14A, 10R
IN 1839

FORERUNNERS
STAMPS OF INDIA W. ADEN
CANCELS



1891



1892



1893



1901

ABYSSINIA (Ethiopia)

SEMI-POSTAL STAMPS

1935



ADEN

British Colony in Asia, CAPITAL—Aden.

1937



1939



AFGHANISTAN

A Constitutional Monarchy in Central Asia. CAPITAL—Kabul.
MONETARY UNIT—Afghani Rupee.



1910-20



1927



1928-29



1932-38



280

282



277

278

279

AFGHANISTAN

1939



317



45 P
BRIGHT
CARMINE

323

50 P
DEEP ORANGE

326



327



322a

POSTAL TAX STAMPS
1938

1939



323



15A1



ALEXANDRETTE

A Political Territory in Northern Syria bordering on Turkey.

1938



ARMENIA

With Azerbaijan and Georgia, Armenia makes up the Transcaucasian Federation of Soviet Republics. CAPITAL—Erivan. Stamps were replaced by those of Russia, in 1923.

Russian Stamps of 1902-18 Surcharged with Various Devices

1920



1921



AITUTAKI

British Colony in the South Pacific Ocean, annexed to New Zealand. The stamps were replaced by those of Cook Islands on March 15, 1932.

1903

1912-13



1917-20



1920-27

#27a



34



35



36

ALAOUITES

A division of Syria, (Asia) became an independent state in 1924, although still administered under French Mandate. Stamps were replaced by those of Latakia in 1930.

1925



ALAOUITES

1925-28



34

36



AIR POST STAMPS

1926



1929-30



POSTAGE DUE STAMPS

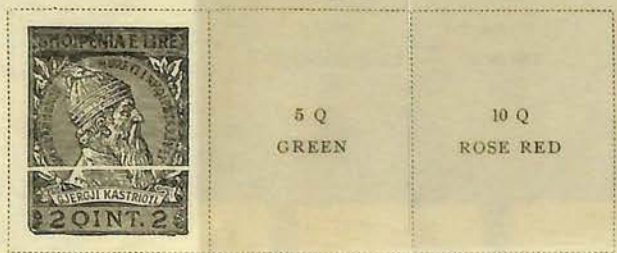
1925



ALBANIA

Formerly a Kingdom in Europe. March 1939, Italy invaded Albania, King Zog fled the country but did not abdicate his throne. The Crown was accepted by King of Italy.

Dec. 1913



1921



1923
147-
150



1925



1927



1928



1930



1923
151-153



ALBANIA

1935

261-270

Same Overprinted Like cut 1 Q SLATE	1	1	5 Q YELLOW GREEN	10 Q CARMINE	15 Q DARK BROWN	25 Q DARK ULTRAMARINE	50 Q SLATE GREEN
	9	9					
	2	3					
	4=24Dhetuer=4	4					
	2 Q						
	ORANGE RED						

1937



1938



POSTAGE DUE STAMPS

1930



ALBANIA

25th ANNIVERSARY OF INDEPENDENCE FROM TURKEY



1912-1937



25 VJETOR' I INDEPENDENCËS
SHQIPTARE

VLEFTA: 90 QIND.

1937

ARGENTINE REPUBLIC

Buenos Aires



Republic in South America. CAPITAL—Buenos Aires.
MONETARY UNIT—the peso.

67

1858-61



1867-73



1870-78



ROSARIO FRANCA 1877-80

22

23

1884-87

37

1888-90



1888-92

57



1892-98



1899



122

139

ASCENSION

A small island in the south Atlantic Ocean. A part of British Colony of St. Helena.

1922



1924-27



1934



1937



ASCENSION

SG 38



SG 39 d 1938



SG 40 e ROSE CARMINE



SG 41 a



SG 42 a



SG 44 a



SG 39 b



SG 42 b 1940



SG 42 b



406 VERMILION



SG 45 c



SG 46 a



SG 47 a



① all perf. 13 varieties

AUSTRALIA

A self-governing Dominion of the British Commonwealth of Nations. CAPITAL—Canberra.

1913-25



1913-14



1914-30



1928

1927



1929



1930



AUSTRALIA

1931-32



1932



1934



1935



1934



1936



1936



1936



1937



1935



1940



AUSTRIA

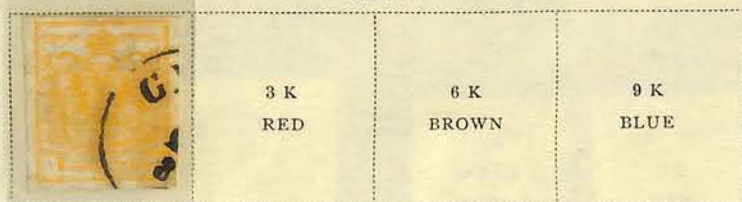
Austro-Hungarian Monarchy



A Republic in Europe. Formerly a part of the Austro-Hungarian Empire. In March 1938, Austria was taken over by Germany.
CAPITAL—Vienna.

1850

1858-59



16

1861

1863



1867



1883

1890



1890



BELGIUM



1865



21

Leopold I



46

Leopold II



A Constitutional Monarchy in Europe. CAPITAL—Brussels.

1849
1850-63



1866

1869-78

1869-78

1883



1884-91



1893-1900



1893-1900

1894

1896



BELGIUM

1905-07



1912-13



1915-21



1919



1920



BELGIUM

1921

1920



1921-23



1926-28



1926-28

1927



1929-30



BELGIUM

1930

1932



1930

1931



1932

1934



1934

1934-35



1935

1936-38



BELGIUM

1936-40



1938



SEMI-POSTAL STAMPS

1910



2 C
PURPLE BROWN

1910

1914

1915



10 C
ROSE
AND RED



BELGIUM

SEMI-POSTAL STAMPS

1914



1918



5 C + 5 C
BLUE GREEN

10 C + 10 C
RED

1918



15 C + 15 C
BRIGHT
VIOLET

20 C + 20 C
PLUM

1920



1922



1923



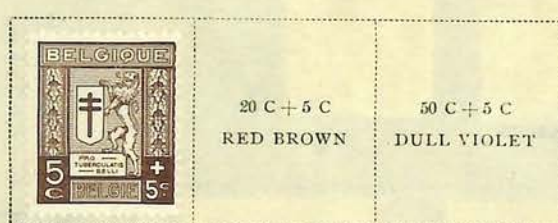
1925



1926



1926



20 C + 5 C
RED BROWN

50 C + 5 C
DULL VIOLET



5 F + 1 F
ROSE RED

1927



85 C + 10 C
YELLOW GREEN

1.75 F + 25 C
DARK BLUE



5 F + 1 F
PLUM

BELGIUM

SEMI-POSTAL STAMPS

1928



1928-1931



25 C + 15 C
DARK VIOLET

50 C + 10 C
DARK GREEN

1 F + 25 C
ROSE LAKE

1.75 F + 20 C
ULTRAMARINE

BELGIUM

SEMI-POSTAL STAMPS

1932

Like next cut
10 C + 10 C
DARK VIOLET

50 C + 30 C
BRIGHT VIOLET

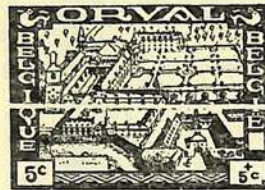


Like cut
10 C + 5 C
DARK VIOLET



50 C + 10 C
RED BROWN

75 C + 15 C
OLIVE BROWN



1934



25 C + 15 C
BROWN
AND RED

1933

1934

50 C + 10 C
DULL GREEN
AND RED

75 C + 15 C
VIOLET BROWN
AND RED



25 C + 15 C
VIOLET

50 C + 10 C
RED BROWN



1934



1935

70 C + 30 C
RED BROWN

1.75 F + 50 C
DARK BLUE



BELGIUM

SEMI-POSTAL STAMPS

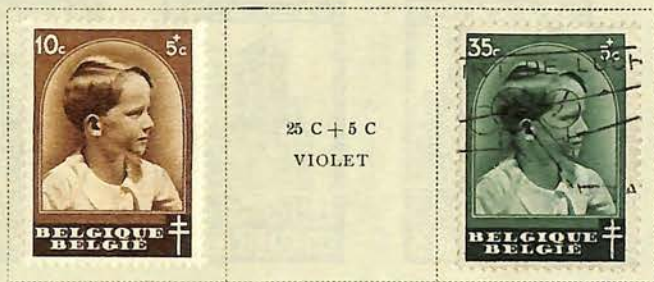
1935



1935



1936



1936



1937



BELGIUM

SEMI-POSTAL STAMPS

1937

1 F + 25 C
DARK CARMINE

1.75 F + 25 C
DEEP
ULTRAMARINE

2.45 F + 1.55 F
DARK BROWN



25 C + 5 C
LIGHT BROWN



1937



1938



1938

1.75 F + 25 C
ULTRAMARINE

2.45 F + 2.55 F
PURPLE



30 C + 5 C
MAGENTA



1 F + 25 C
DARK CARMINE



2.50 F + 2.50 F
DEEP GREEN

5 F + 5 F
BROWN LAKE

BELGIUM

SEMI-POSTAL STAMPS

1938



1938

1939

1 F + 25 C
CARMINE

2.45 F + 2.55 C
BROWN VIOLET



1939



1 F + 25 C
BRIGHT ROSE



BELGIUM

SEMI-POSTAL STAMPS

1940



1940



BELGIUM

OCCUPATION STAMPS

1914-15

1916



1916

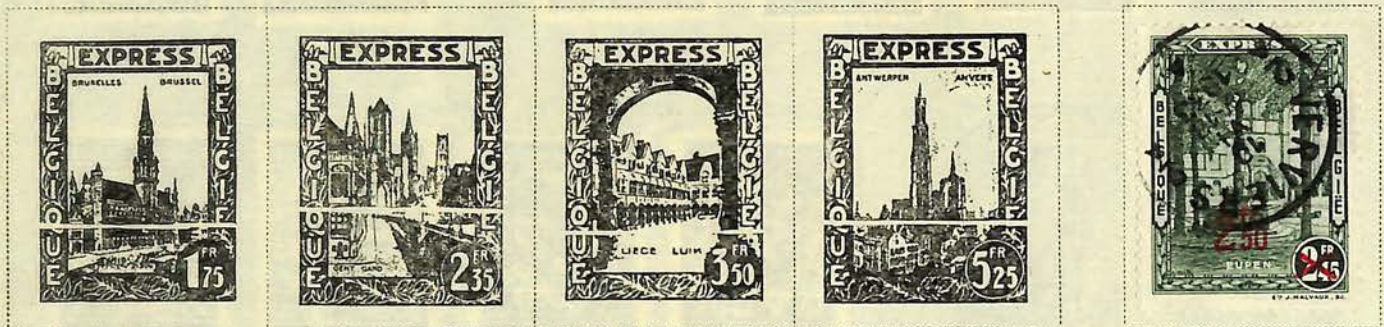
1917-18



SPECIAL DELIVERY STAMPS

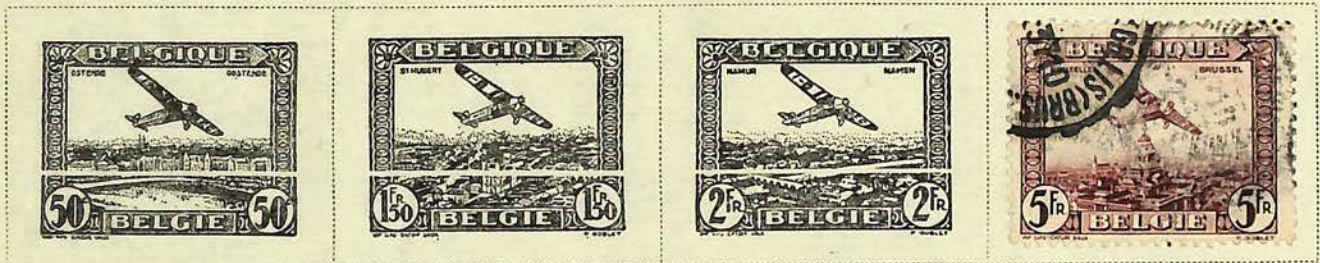
1929

1931



AIR POST STAMPS

1930



POSTAGE DUE STAMPS

1895-1932

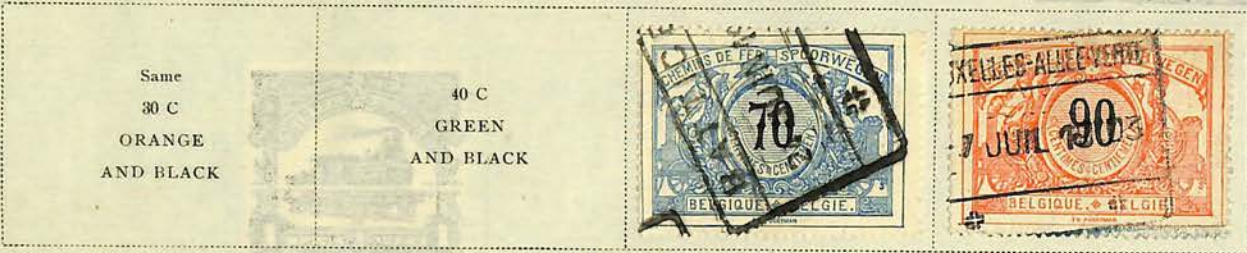


BELGIUM
PARCEL POST STAMPS
 1895-98



1902

OSTENDE 1898



1902-06



BELGIUM

PARCEL POST STAMPS

1912-14



4 F
YELLOW GREEN
AND RED

5 F
ORANGE AND
BLUE GREEN

10 F
OLIVE YELLOW
AND BROWN VIOLET

1916-20



BELGIUM

PARCEL POST STAMPS

1922



1923-27



1929-34



OFFICIAL STAMPS

1929-39



01 04 07 020 024 022

BELGIUM

PARCEL POST STAMPS 1935


	20 C VIOLET	30 C BLACK BROWN			
	80 C OLIVE BLACK	90 C ROSE LAKE			

1934

1936

			
--	--	---	--

1939

	50 C VIOLET BLUE	2 F ROSE RED	9 F SLATE GREEN
---	---------------------	-----------------	--------------------

1918-16
WDRK
GERMAN
OCCUPATION



NEWSPAPER STAMPS 1928-29

Parcel Post Stamps of 1923-27 Overprinted JOURNAUX DAGBLADEN 1928 10 C VERMILION	20 C TURQUOISE BLUE	40 C OLIVE GREEN	60 C ORANGE		80 C VIOLET	90 C SLATE
--	---------------------------	---------------------	----------------	--	----------------	---------------

BERMUDA

A British Colony consisting of about 360 small islands in the Atlantic Ocean. CAPITAL—Hamilton.

1865-93



1901



Type of 1902-06
 $\frac{1}{4}$ P
 PURPLE
 AND BROWN

$\frac{1}{2}$ P
 GRAY GREEN
 AND BLACK

$\frac{1}{2}$ P
 GREEN



1 P
 CARMINE

$\frac{2}{4}$ P
 ULTRA-
 MARINE

1902-10

1910-36

4 P
 VIOLET
 BROWN
 AND BLUE

Like cut
 $\frac{1}{4}$ P
 BROWN



$\frac{1}{4}$ P
 RED BROWN

2 P
 GRAY

1910-36

$\frac{2}{4}$ P
 APPLE
 GREEN

$\frac{2}{4}$ P
 ULTRA-
 MARINE

3 P
 ULTRA-
 MARINE

3 P
 VIOLET
 ON YELLOW

4 P
 RED ON
 YELLOW

6 P
 CLARET

1 S
 BLACK ON
 EMERALD

1920



$\frac{1}{2}$ P
 GREEN

1 P
 ROSE RED

2 P
 GRAY

1940

Stamp of 1938
 Surcharged
**HALF
 PENNY**

 X . X
 On 1 P
 ROSE RED & BLACK

BERMUDA

1921

WAR TAX STAMP
1918



1/2 P
GREEN

1 P
CARMINE



Regular Issue
of 1910-19
Surcharged
WAR TAX
1 P
CARMINE

1935

Type of Antigua
Silver Jubilee
1 P
CARMINE
AND DARK BLUE

1 1/2 P
BLACK AND
ULTRAMARINE



1 S
BROWN VIOLET
AND INDIGO

1936-40



1 1/2 P
CHOCOLATE
AND BLACK



2 P
RED AND
ULTRAMARINE



1 S
DEEP GREEN

1937



1938



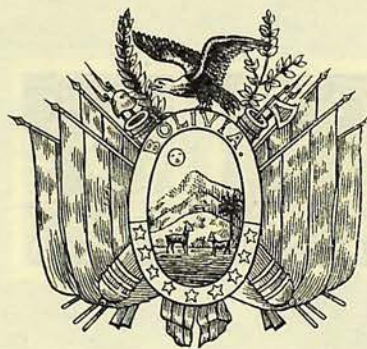
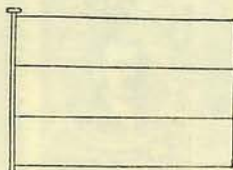
1 1/2 P
VIOLET BROWN
AND BLUE

Type of 2 P, 1936
2 P
BLACK AND
TURQUOISE BLUE



Like 2 1/2 P
1 S
GREEN

BOLIVIA



Republic in South America. CAPITAL—La Paz.
MONETARY Unit—is the Boliviano.

1866-67



2

1878



1887



1890-93



Perforated
2 C
VIOLET

1894



1894



1899-1901



5 C
DARK GREEN

1899-1901



5 C
DARK RED

1897



1901-02



1909



BOLIVIA

1909



1910



1911



1912



1913



1916-17



1916-17



1919-27



1919-27



1928



1931



1933



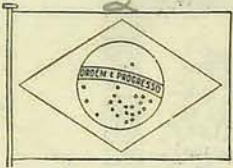
1935





EARLY
PRINTING
W. DIENA
SIGNATURE

BRAZIL



Dom Pedro II

26



Republic in South America. CAPITAL—Rio de Janeiro.
MONETARY UNIT—is the milreis. A new monetary unit, the cruzeiro, was introduced in 1925, but postage stamps are still issued in multiples of the milreis.

1866-76

1850



23

1866

24

10
SICCO



1878-79

1882-84



1884-85



1885



1887



1890-91



1891



1893



1894-97



500 R
BLUE
AND BLACK



BRAZIL

1900



1906-16



1906-16



1908-09

1906-16



1920



1918



1920-24



1900





P10



P11



P12



P13



P20



P21



P22



P24



P22

BRAZIL

NEWSPAPER STAMPS

Unwatermarked

1889



1890



1890-93



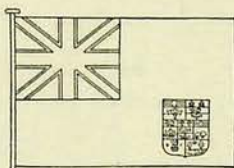
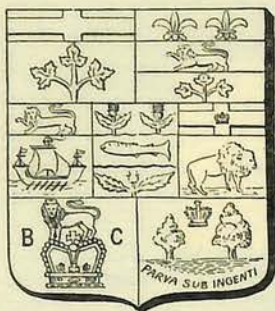
50 R

YELLOW GREEN

ON WHITE

No. P25

CANADA



ROWN RED



A British Dominion in North America. CAPITAL—Ottawa. MONETARY UNIT—Canadian Dollar.

1852	1859-64	1868					
							<i>22b</i>
			<i>19</i>	<i>Perf 12x12.1</i>	<i>22</i>		<i>VICTORIA B.C CROWN 175 230</i>
1868		1869-77					
			<i>296</i>				<i>38</i>
1869-77		1882-93					
					6 C RED BROWN		
1892		1898					
	50 C DEEP BLUE						
1897							
			3 C CARMINE	5 C DARK BLUE ON BLUE	8 C ORANGE	10 C BROWN VIOLET	

CANADA

1897



2 C
GREEN



5 C
DEEP BLUE

1897



Issue of 1897
Surcharged
2 CENTS
On 3 C
CARMINE

Same Surcharge
On Issue of 1898
2 C
On 3 C
CARMINE

1899

1898

Like cut
1/2 C
BLACK



5 C
BLUE
ON BLUE

6 C
BROWN



10 C
BROWN
VIOLET

1901-02

1908



7 C
OLIVE
YELLOW

20 C
OLIVE
GREEN



1908

1917



1903-08



20 C
OLIVE GREEN

50 C
PURPLE

1912-18



CANADA

1917-24



1924-25



1923-24



1926

Stamp of 1923-25
Surcharged
2 CENTS
On 3 C
CARMINE

1927



1927



1928



BONZE GREEN



15966

CANADA

1930



1930-31



1931



1932



1932

Type of 12 C, 1930
13 C
DULL VIOLET

1933

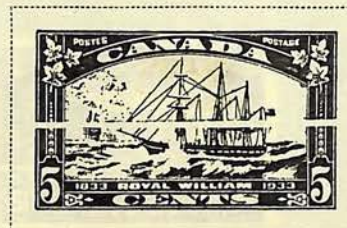


1933

Stamp of 1930, Surcharged
WORLD'S
GRAIN EXHIBITION &
CONFERENCE

REGINA 1933
20 C
BROWN RED

1933



Jumbo E/a

CANADA

SPECIAL DELIVERY STAMPS



1898



1927



1922



1930



1933



1935



1939

SPECIAL DELIVERY STAMP

1938



AIR POST STAMPS

1928



1930



AIR POST STAMPS

1932



1935



1938



REGISTRATION STAMPS

1875-79



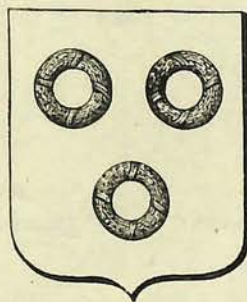
W. CERT.

WAR TAX STAMPS

1916



CAPE OF GOOD HOPE



A province of the Union of South Africa. A self-governing dominion. CAPITAL—Cape Town.

1853-64



3a

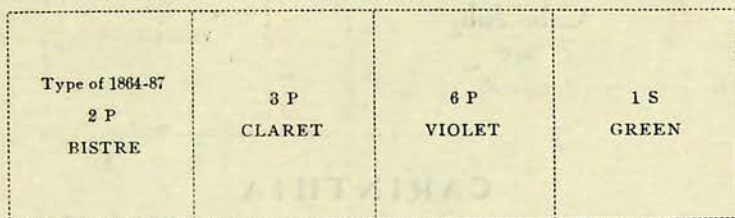


4

1864-87



1882-87



1891



1892



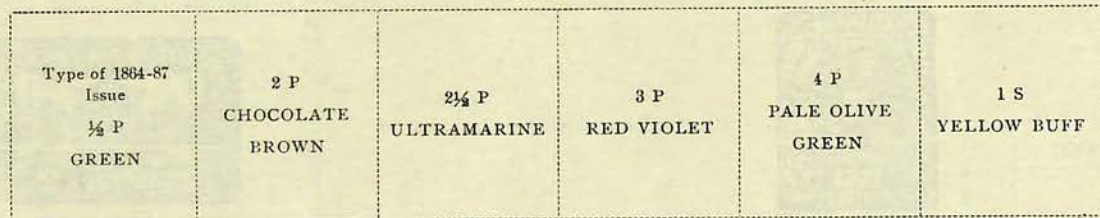
1893



1893-1902



1896-98



1900



1902-04



KAP DER GUTEN HOFFNUNG

CAPE OF GOOD HOPE



CAP DE BONNE-ESPÉRANCE

Britische Bes... n anglaise

1853/68 — 15 ANCHOR

rot|rose-red|rouge
BLUZ PAPER

blau|blue|bleu
2 BLU PAPER
1853/68 ~

lila|lilac|lilas
5 WHITE PAPER



gelbgrün|yellow-green|vert-jaune
6 WHITE PAPER

1861 — (Schlechtere Ausf.|Rough impr.|Grav. grossière)
WATERMARK

rot|red|rouge
LAID PAPER

blau|blue|bleu
9 LAID PAPER

1864 ~ (Mit Umrandungslinie|With border|Avec bordure) WATERMARK 1 CROWN & C C



rosa|rose
16

blau|blue|bleu
17 SHADERS

lila|violet
18

grün|green|vert
19

KAP DER GUTEN HOFFNUNG CAPE OF GOOD HOPE — CAP DE BONNE-ESPÉRANCE

1871/76 CC (Ohne Umrandungslinie|Without border|Sans bordure)



grauschwarz|black
gris-noir 23 27 blau|blue|bleu 27 orange 28



SHAPES - 24

1868 CC



lila|violet
20

1874 CC



lila|violet
21

1877 CC



grün|green|vert
22

1879/80 CC



blau|blue|bleu 29 lilarosa|lilac-rose
lilas 55

1880 CC



lilarosa|lilac-rose
lilas 25

1880 CC (X 3)



lilarosa|lilac-rose
lilas 32

1881/83 CC



braunrosa|claret
carminé 26

1882/90 CC



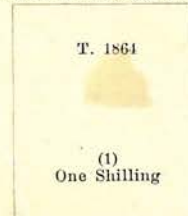
olivbraun|ochre|bistre
44

1882 CC



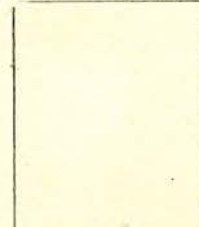
braunrosa|claret
carm. 39

1893 CC (Ohne Umrandung
Without border|Sans bordure)



T. 1861
(1)
One Shilling
grün|green|vert
51

wk 2 CROWN CA

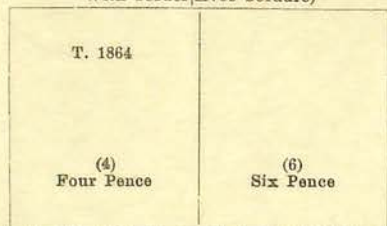


40

KAP DER GUTEN HOFFNUNG — CAPE OF GOOD HOPE CAP DE BONNE ESPÉRANCE

Abarten — Varieties — Variétés

1864 (Mit Umrandungslinie
With border/Avec bordure)



blauschwarz|black
gris-noir 20

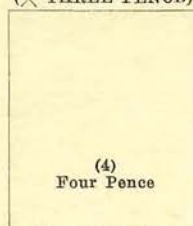
dunkellila|dull lilac,
mauve 21

1879 (THREE PENCE)



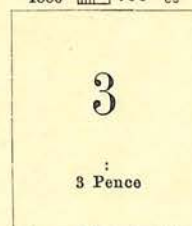
blau|blue|bleu
29

1879 (THREE PENCE)



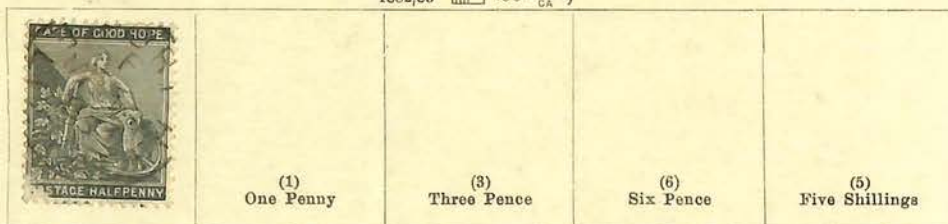
blau|blue|bleu
30

1880



lilarosa|lilac-rose|lilas
31

1882/83



grauschwarz|black
gris-noir
33

rosa|rose
34

braunrosa|claret
carminé
36

violett|violet
37

orange
38

braunrosa|claret|carm.
39

1884/90



grauschwarz|black
gris-noir
41

rot|red|ronge
43

orange
44
SHAPE

blau|blue|bleu
47

violett|violet
49

grün|green|vert
51

orange
53

1893
(Penny ohne Punkt
without stop/sans point)



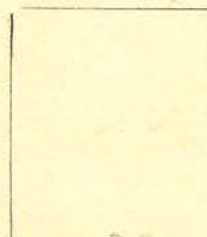
56



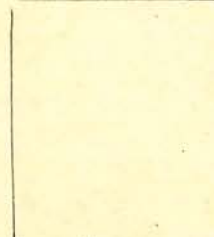
59



olivbraun|ochre|bistre
58b



35



42

¹⁾ 6 Pence mit Umrandungslinie|with border|avec bordure
²⁾ 6 Pence und 1 Shilling mit Umrandungslinie|with border|avec bordure

KAP DER GUTEN HOFFNUNG
 CAPE OF GOOD HOPE — CAP DE BONNE-ESPÉRANCE



1893
 olivbraun|ochre
 58
 bistre



1892
 olivgrün|olive-green
 56
 vert-gris



1891
 rotviolett|claret
 55
 carmin



1894
 karmintrosa|carm.
 62



1894/1902
 roth|claret|violet
 61



1894/1902
 karmine|carm.
 60



1894/1902
 hellgrün|green|vert
 59



BWS
 1894



1896/98
 braunorange|orange-
 brown
 55



1896/98
 olivgelb|yellow-
 ochre|jaune
 50



1896/98
 oliv|sage-green
 48



1896/98
 rotviolett|magenta
 mauve
 46



1896/98
 ultramarin|blue
 bleu
 57



1896/98
 dunkelbraun|brown
 brun
 45



1896/98
 hellgrün|green|vert
 42

6158



1903
 violett|purple
 69



1903
 olivgrün|olive
 68



1903
 rotviolett|ochre
 lilas
 67



1903
 ultramarin|outremer
 66



1903
 karmine|carm.
 64



1903
 hellgrün|green
 vert
 63



1903



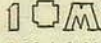
1903
 olivgelb|yellow-
 ochre|jaune
 70



CENTRAL LITHUANIA








SEMI-POSTAL STAMPS

1921

<p>Same With Inset</p>  <p>2 M + 1 M CLARET</p>	<p>4 M + 1 M GRAY GREEN AND BUFF</p>	<p>10 M + 2 M BROWN AND YELLOW</p>	<p>Same Imperforate</p> <p>2 M + 1 M CLARET</p>	<p>4 M + 1 M GRAY GREEN AND BUFF</p>	<p>10 M + 2 M BROWN AND YELLOW</p>
--	--	--	---	--	--

POSTAGE DUE STAMPS

1920-21

					
	1 M GREEN	3 M RED VIOLET	5 M RED VIOLET	2 M RED VIOLET	20 M SCARLET

CEYLON

A British Crown Colony; an island in the Indian Ocean. CAPITAL—Colombo. MONETARY UNIT—the Rupee.

1861	1857	1872-85	
			
31	5 (36-3)	2 C GREEN	4 C LILAC ROSE
1885	1886-93		
		Type of 25 C 3 C ORANGE BROWN AND GREEN	
			L'ke next cut 15 C OLIVE GREEN
			30 C VIOLET AND ORANGE BROWN

GUERNSEY REGIONALS

WAR OCCUPATION ISSUES OF
1941-1944 Issued under
British authority during
German Occupation

STANLEY GIBBONS NO.s



1-



1-a



1-b



1-c



1-d



1-e



1-f



2



2-a



2-b



3-



8-a



4



5



4-a



5-a

JERSEY REGIONALS

WAR OCCUPATION ISSUES

M.N.H.

1941-1942



2-CRAY
PAPER



7.



1.



1-CRAY
PAPER

1943



3



4



5



6

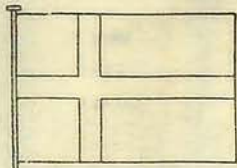


7



8

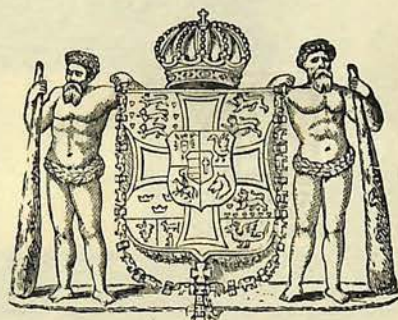
DENMARK



Frederick VII



Christian IX



A Kingdom in Europe. CAPITAL—Copenhagen.

1851



2

1853-57



1858-63



1864-65



4 S
RED

1870-71



1874-99



1874-79



1882-85



1901-02



1904



1904-12



1905



DENMARK

1907-12



1913-22



1913-22

1920-21



1920-26

1920-21



1924



DENMARK

1924



1926



1927-33



1930



1930



1935

1936



1937

Type of 1933
10 ø
LIGHT
BROWN

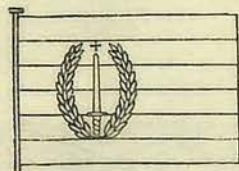
1937-38



FAROE ISLANDS



DUTCH INDIES



Dutch possessions in the East Indies. CAPITAL—Batavia.

1864-86



1883-89



1892-97



1889-1900



1901



1902

1902-08



DUTCH INDIES

1906

1902-08

1905

Same
20 C
OLIVE GREEN



1908-09

1908



1912-23



1912-14

1918



Stamp of 1912-14
Surcharged
1
On 4 C
ULTRAMARINE



DUTCH INDIES

1921-22

1921-31



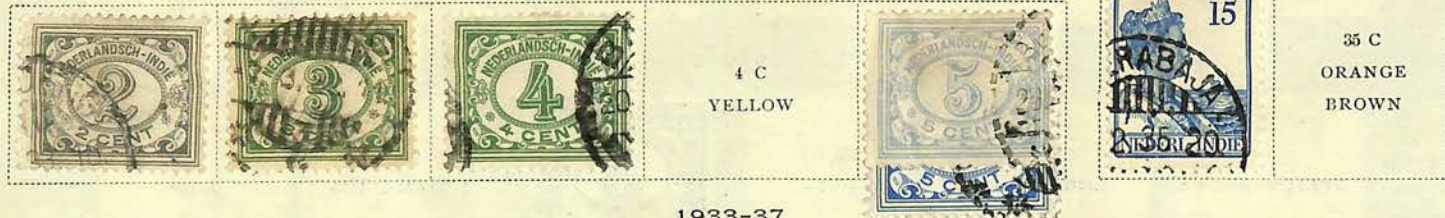
1923

1933

1917



1928-30



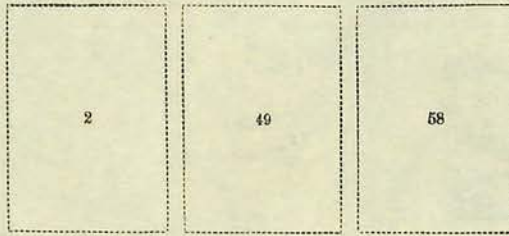
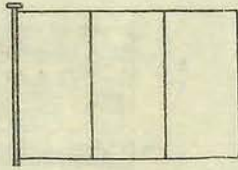
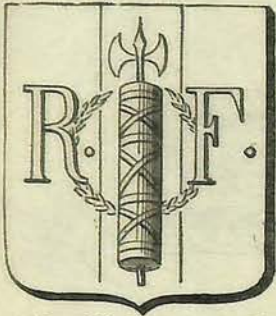
1933-37



1934



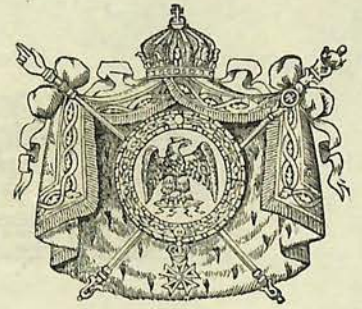
FRANCE



Napoleon III

McMahon

Sadi Carnot



A Republic in Europe. CAPITAL—Paris.
MONETARY UNIT—the franc.

1849-50

1852



#1



#2



#3



#6



12



5 C
GREEN
ON GREENISH

13



14



1853-60 #6



1862



1863-70



1870-73



2 C
RED BROWN
ON YELLOWISH



41



44



46



47



48



50

1872-75



51



52



USED FROM ⁶²YOKOHAMA
JAPAN - 12 FEB 77
PAID 830

FRANCE

1876



1876



1877-78



1877-78



1879-92



1899-1900

1900-29





FRANCE

1900-29



1900-29

1902



1903-38



1903-38

1906-37



FRANCE

1907-37



1923-26



1923-26

1924



1924

1925



1925



1927

1929



252

FRANCE

1926-27



1926-27



1929-33



1930-33



1930



1931



1932-39



FRANCE

1933

1934



1934-35



1936-37



FRANCE

1936



1937



331



330



FRANCE

1938-40



1939-40



FRANCE

AIR POST STAMPS

1930



1934



1936



SEMI-POSTAL STAMPS

1914



1917-19



1918



1922

Semi-Postal
Stamps of 1917-19
Surcharged like cut
15 C + 5 C
GRAY GREEN

2 C + 1 C
VIOLET
BROWN

+5c
=
2½ C
GREEN

25 C + 5 C
DEEP BLUE

35 C + 5 C
SLATE
AND VIOLET

1936-37



Sergio Sismondo

Philatelic Expert
Syracuse, New York & Ottawa, Canada

Syracuse, New York, 2020.06.25. No. 46,177.

FRANCE, 1927.

I have examined the set of two Air Mail postage stamps issued by France on June 25th of 1927, "Merson" 2 Francs orange and blue green, and 5 Francs dark blue and yellow, each overprinted with Airplane and "Poste Aérienne" in dark blue or black, Scott Catalogue #C1-C2; Ceres Catalogue P.A. #1-2, unused, a colour reproduction of which is below, magnified to 125% of true size, and am of the opinion that:

The two stamps submitted are **genuine in all respects**, unused, with full original gum and very lightly hinged. The two stamps have fresh original colours, are well centered, and are entirely free from faults or repairs at the time of examination. I have signed the two stamps in order to attest to their authenticity.

Sergio Sismondo.



AMERICAN HELVETIA PHILATELIC SOCIETY • AMERICAN PHILATELIC CONGRESS • AMERICAN PHILATELIC SOCIETY • AMERICAN SOCIETY OF POLAR PHILATELISTS • AMERICAN STAMP DEALERS ASSOCIATION • AUSTRALIAN STATES STUDY CIRCLE • BRAZIL PHILATELIC ASSOCIATION • BRITISH CARIBBEAN PHILATELIC STUDY GROUP • BRITISH NORTH AMERICAN PHILATELIC SOCIETY • BNAPS NEWFOUNDLAND STUDY GROUP • CANADIAN PHILATELIC SOCIETY OF GREAT BRITAIN • CANADIAN STAMP DEALERS ASSOCIATION • CEYLON STUDY CIRCLE • CHINA STAMP SOCIETY • COLLECTORS CLUB OF NEW YORK • COPAPHIL • CUBAN SOCIETY OF PHILATELISTS OF AMERICA • DISINFECTED MAIL STUDY CIRCLE • FRANCE AND COLONIES PHILATELIC SOCIETY • HELLENIC PHILATELIC SOCIETY OF AMERICA • INTERNATIONAL PHILIPPINE PHILATELIC SOCIETY • INTERNATIONAL SOCIETY FOR JAPANESE PHILATELY • INTERNATIONAL SOCIETY FOR PORTUGUESE PHILATELY • IRAN PHILATELIC STUDY CIRCLE • ITALY AND COLONIES STUDY CIRCLE • NATIONAL STAMP DEALERS ASSOCIATION • OTTOMAN AND NEAR EAST PHILATELIC SOCIETY • PHILATELIC TRADERS SOCIETY • P.S.G. SOUTHERN AFRICA • POLAR POSTAL HISTORY SOCIETY OF GREAT BRITAIN • POSTAL HISTORY FOUNDATION • ROSSICA • R.P.S. CANADA • ST. HELENA, ASCENSION and TRISTAN DA CUNHA PHILATELIC SOCIETY • SCANDINAVIAN COLLECTORS CLUB • SOCIETY OF AUSTRALASIAN SPECIALISTS • UNIONE FILATELICA LOMBARDA • UNITED STATES PHILATELIC CLASSICS SOCIETY • UNITED STATES POSSESSIONS PHILATELIC SOCIETY • WEST AFRICA STUDY CIRCLE • WESTERN AUSTRALIA STUDY GROUP

FRANCE
AIR POST STAMPS

OVERPRINT
DK. BLUE



C 1



OVERPRINT
BLACK

C 2

JUNE 25, 1927
PERF, 14 x 13 1/2

On sale only at the international Aviation Exhibition
at Marseilles in June 1927. One set could be purchased
by each holder of an admission ticket.

Stamps certified by Sergio Sismondo