

D.O. BLOOD ET C^o. PHILADELPHIA, PENN.

1845.



378

1854.

2565 225\$/pc



50

1848

BROADWAY POST OFFICE, NEW YORK CITY.
GRAVE SUR Bois



2662 250\$

U.S. CITY DESPATCH POST.



NEW YORK.
1846-48.

6062 225\$

250

175

CITY DESPATCH POST, NEW YORK, CITY.
1842

GRAVE.



4061 575\$



628

378

1854

DEMINGS PENNY POST, FRANKFORD, PENN.
LITHOGRAPHIE



6281 575\$

99 9

5750

\$ 6950

MOODY'S PENNY DESPATCH - CHICAGO, ILL.

1856 . TYPOGRAPHIE .



1221A 1230

BRADY & Co Chicago Illinois

1857-58.



231A 630

PRIEST'S DESPATCH . PHILADELPHIA, PENN.

1851 .



1221A 9

WELLS , FARGO AND CO

1862-64.



30 1/2



75 1/2



12312 120 1/2

1861

W. WYMAN , BOSTON , MASS.

1844



1241A



7
7

JONES' CITY EXPRESS . BROOKLYN . N.Y.

1845.



1241A 1200 1/2

10

13605

LOCAUX.

ADAMS' CITY EXPRESS POST, NEW YORK.
1850-51



9.223

1844
AMERICAN LETTER MAIL CO.
GRAVÉ



36 258



29 258



56 (same?)



5 52 1108

1855
BARR'S PENNY DISPATCH. LANCASTER, PEN.
TYPOGRAPHIE.



32 1000



212 250

1852-55.

1844
BRAINARD ET C^e
TYPOGRAPHIE

BROWNE & Co.'s City Post. Cincinnati - OHIO.
IMPRIMÉ PAR J.W.S. BROWN.



29 1000



29 1000



29 1000

no

\$ 1640

EMISSIONS SEMI.OFFICIELLES.

LOUISVILLE, KY.

1858 BROWN ET MCGILL' U.S.RO DESPATCH.
LITHOGRAPHIÉ.



563

022

NEW.YORK, N.Y.

1842-45. UNITED STATES CITY DESPACTH POST
GRAVÉ.



600

6186

EAGLE CITY POST. PHILADELPHIA, PENN.

1850.



6113 225/4



6114 145/4



6115 225/4

625

JENKINS' CAMDEN DISPATCH. CAMDEN, N.J.

1853



891a 350/4

METROPOLITAN ERRAND AND CARRIER EXPRESS CO. NEW YORK CITY.

1855-59



1071a 20/4

20

METROPOLITAN POST OFFICE. NEW YORK CITY.

1852-53



1081 ?

(9)

75

7

760

SCOTT # 1L

1854
Adams & Co.



1850-1851
Adams City Express

SCOTT # 2L3

2L3 Reprint



1882
ALLENS DISPATCH

SCOTT # 3L1

3L2

3L3

3L4



3L3a

Rare tinted paper

Imperf

SCOTT # 442 1857

AMERICAN EXPRESS Co.



SCOTT # 511b 1844

AMERICAN LETTER MAIL Co.



Pelure paper



Reprints in colors

SCOTT #841 1855

BARR'S PENNY DISPATCH



BELL'S DISPATCH
MONTREAL



SCOTT # 1141 1851
BERFORD & CO'S EXPRESS

1141



1143



1144



SCOTT # 1842 1848

BOUTON'S CITY DISPATCH POST

Dot in corners

SCOTT'S #15L 1846-1860

D.O. BLOOD & CO.

15L7

15L11

15L13



15L14



"OK" on back

15L14



"OK Doole"

15L14



15L14



15L15



15L15



15L16



15L17



15L18



Unlisted

SCOTT #20 L 1844-1850
BOYD'S CITY EXPRESS, NEW YORK CITY

20 L 4



20 L 4



20 L 7



20 L 8



20 L 8



20 L 9



Shade

20 L 10



20 L 12

20 L 13

20 L 13

20 L 13



20 L 14



20 L 16



20 L 17

20 L 18



20 L 19



20 L 20

20 L 21

SCOTT # 20L 1863
BOYD'S CITY EXPRESS

20L23



20L23



20L23



20L24



20L25



SCOTT # 20 L 1830

BOYD'S CITY EXPRESS

20 L 53



20 L 55



BOYD'S CITY POST
ENVELOPES
1864

SCOTT 20 L U 1

20 L U 2

20 L U 2

20 L U 3

20 L U 4

20 L U 5

20 L U 5

SCOTT #2241 1857-1858

BRADY & CO. NEW YORK CITY



SCOTT #2341 1860

BRADY & CO'S CHICAGO PENNY POST



SCOTT #274 1855-58

BRONSON & FORBES' CITY EXPRESS



SCOTT #284 1851-1854

BROOKLYN CITY EXPRESS POST

284



285a

285



286



286



Dark blue

SCOTT 30 L3 1857

BROWNE'S EASTON DESPATCH



SCOTT 35 L1 1864

CARNES' CITY LETTER EXPRESS

35 L1



35 L1



35 L2

SCOTT 36 L1 1849-51

G. CARTER'S DESPATCH



SCOTT 37 L1 1846-50

CHEEVER & TOWLE



SCOTT # 3841 1862-63

CHICAGO PENNY POST

"ok"

SCOTT #3941 1883

CINCINNATI CITY DELIVERY



SCOTT #4041 1842

NEW YORK CITY DESPATCH POST



SCOTT #414a 1860

CITY DISPATCH, PHILADELPHIA



Thick paper

SCOTT #5341 1856
CRESSMAN & CO'S PENNY POST



SCOTT #5422 1870-71
CROSBY'S CITY POST



SCOTT #5841 1854
DEMING'S PENNY POST

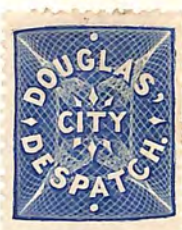


SCOTT #59L 1879
DOUGLAS CITY DESPATCH

59L1



59L2



59L3



59L3a



Imperf.

59L5a



Imperf.

SCOTT #61L 1850
EAGLE CITY POST
61L3 61L4

SCOTT #62L4 1855-65
EAST RIVER POST OFFICE



L3

EDINBURGH & LEITH



SCOTT #64L1 1881
EMPIRE CITY DISPATCH



SCOTT #65L1 1856
ESSEX LETTER EXPRESS



SCOTT # 6841 1860
FLOYD'S PENNY POST



SCOTT # 69L 1845-51
FRAZER & CO.



SCOTT # 70L 1864-70
GAHAGAN & HOWE CITY EXPRESS

70 L1



70 L1



70 L2



70 L2



70 L3



HACKETT'S CITY POST



SCOTT # 76 L1 1847
HALL & MILLS' DESPATCH POST



SCOTT # 78 L1 1845
HANFORD'S PONY EXPRESS



SCOTT # 80 L1 1844
HARTFORD, CONN., MAIL ROUTE

?

OK

X Not counted
small portion of stamp

SCOTT #87 L 1854
HUSSEYS' POST

87 L1



87 L2



87 L3



87 L4



87 L6



87 L7



87 L9



87 L9



SCOTT # 87L 1859-82

HUSSEY'S POST

87 L10



87 L13



87 L13



87 L14



87 15



87 L21



87 L27

87 L29

87 L31

87 L38



87 L38

87 L39

87 L40

87 L40



87 40

87 41

87 L42

SCOTT # 87L 1872
HUSSEY'S POST

87 L 43

87 L 43



87 L 44



87 L 46



87 L 47



87 L 51



87 L 54



87 L 53



87 L 53



87 L 53



87 L 56



87 L 57



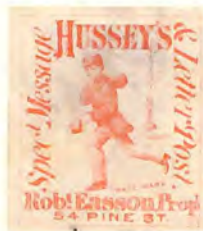
87 L 57



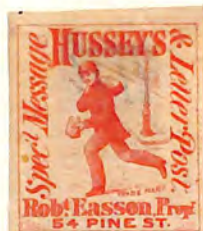
87 L 57



87 L 58



87 L 58



87 L 58



SCOTT # 87 L 1877
HUSSEY'S POST

87 L 59



87 L 59



87 L 59



87 L 60



87 L 64



87 L 65



87 L 65



" Paid "



Reprint



Reprint Shade

87 L 67



87 L 67



87 L 70



87 L 72



87 L 73



SCOTT #87L 1880
HUSSEY'S POST



Type I



Type II



Type II



Reprint

SPECIAL DELIVERY STAMPS



SCOTT # 88L1 1850

JEFFERSON MARKET P.O.



KERR'S CITY POST



SCOTT # 96L1 1844

LETTER EXPRESS



SCOTT # 98L1 1868

WM. E. LOOMIS LETTER EXPRESS



SCOTT # 99L1 1859
McIntire's City Express Post



SCOTT # 104 LI 1853-55
MENANT & CO'S EXPRESS



SCOTT # 106 LI 1849
MESSENKOPES UNION SQUARE P.O.



SCOTT # 107 LI 1853-59
METROPOLITAN ERRAND & CARRIER CO.

107LI



107LIa



107L2



107L3



Reprint

Reprint

107L4



Reprint

SCOTT # 108L 1852-53
METROPOLITAN POST OFFICE

108L3



108L3A



108L4



SCOTT # 113L1 1844
OVERTON & CO.,



SCOTT # 117L 1844
POMEROY'S LETTER EXPRESS

117L1



117L3



117L3



117L4



117L4

117L7



117L7



SCOTT # 119L 1852-58
PRICE'S CITY EXPRESS

119L1



119L2



119L3



SCOTT # 1214 1851

PRIEST'S DESPATCH

1214



SCOTT # 122L1 1861
PRINCE'S LETTER DESPATCH

122L1



ROADMAN'S PENNY POST



SMITH'S CITY EXPRESS POST

SCOTT # 133L1 1849

STATEN ISLAND EXPRESS POST



SCOTT #134 L1 1850

STRINGER & MORTON'S
CITY DESPATCH



SCOTT #136 L 1849-53
SWART'S CITY DISPATCH POST

136 L4



Red

136 L4a



Dark Red

136 L9



136 L10



136 L13



136 L14



Lt Blue

136 L14



DK Blue

SCOTT #137 L1 1852

TEESE & CO. PENNY POST



SCOTT # 143L

1861-76

WELLS, FARGO & CO.

143 L3



143 L4 255



143 L5 200

"OK"

"OK"

143 L7



143 L7a

143 L7a 45

143 L8



"OK"

"OK"

NEWSPAPER STAMPS

143 LP1



143 LP2



143 LP3



143 LP3a



143 LP4



143 LP8



143 LP9



143 LP9



FOR PUBLISHER'S USE

143 LP10



SCOTT # 141 L1 1852

UNION SQUARE POST OFFICE

141 L1



141 L2



141 L3



WALKER'S PENNY POST



SCOTT # 144 L

1863-65

WESTERVELT'S POST, NEW YORK

144 L1



144 L2



144 L2



2144 L31




CARRIER STAMPS

Semi-Official Issues

Charleston, S. C.


1849-50

	2 C BLACK ON BLUISH PELURE (4LB5)	2 C BLACK ON PINK PELURE (4LB6)	2 C BLACK ON YELLOW (4LB7)
---	---	---	-------------------------------------

1851-60

	2 C BLACK ON BLUISH PELURE (4LB9)	2 C BLACK ON PINK PELURE (4LB10)		2 C BLACK ON BLUISH PELURE (4LB12)	
			Similar "Beckman's City Post" 2 C BLACK ON BLUISH (4LB17)		

1858-59

	2 C BLACK ON PINK (4LB19)	2 C BLACK ON YELLOW (4LB20)
---	------------------------------------	--------------------------------------



Louisville, Ky.

1857-58

		(2 C) BLACK (5LB3)
---	---	------------------------------

New York, N. Y.

1842

		Wove Paper 3 C BLACK ON BLUE (6LB3)	3 C BLACK ON GREEN (6LB4)
---	---	---	------------------------------------

