

STAMPLESS COLLECT
LIVERPOOL TO
HARBOR GRACE
VIA HALIFAX
7/19/1858

By Steamer via Halifax

Wm. P. Puntton & Munn

Harbor Grace

Newfoundland

Harbor Grace
JUL 19
1858

STAMPLESS FROM
ST. JOHN'S NEW TO
QUEBEC
5/18/1848

Wm. P. Puntton & Munn

Quebec.

PAID
AT
QUEBEC

Wm. P. Puntton & Munn

STAMPLESS
ST. JOHN'S NEW
TO QUEBEC
AUG 27, 1850

Messrs Messrs Hunt & Co
Merchants
Quebec
mail



STAMPLESS ST JOHN'S
TO HARBOR GRACE
OCT 21, 1853
AND Oct 21, 1857

Oct 22
O. Matt. C.
G. C. Gardner Esq
Sheriff
Harbor Grace



3
G. C. Gardner Esq
Harbor Grace



P.M. TRINITY
12/7/1858



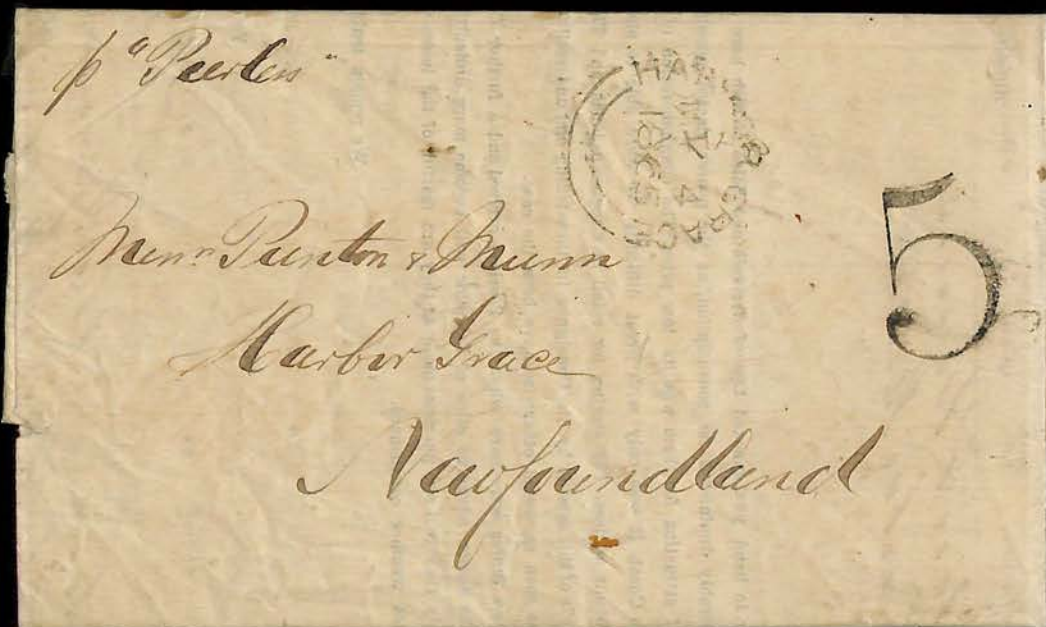
STAMPLESS COVER
BOSTON TO (7/14/1860)
HARBOR GRACE
2/5/1860



STAMPLESS
ST. JOHN'S TO
HARBOR GRACE
MAR 13, 1865



STAMPLESS COLLECT
ST JOHN'S TO
HARBOR GRACE
MAY 4, 1865



ST. JOHN'S TO
HARBOR GRACE
NOV 4, 1870



REGISTRY COVER
ST. JOHN'S TO NYC
APRIL 5 1895

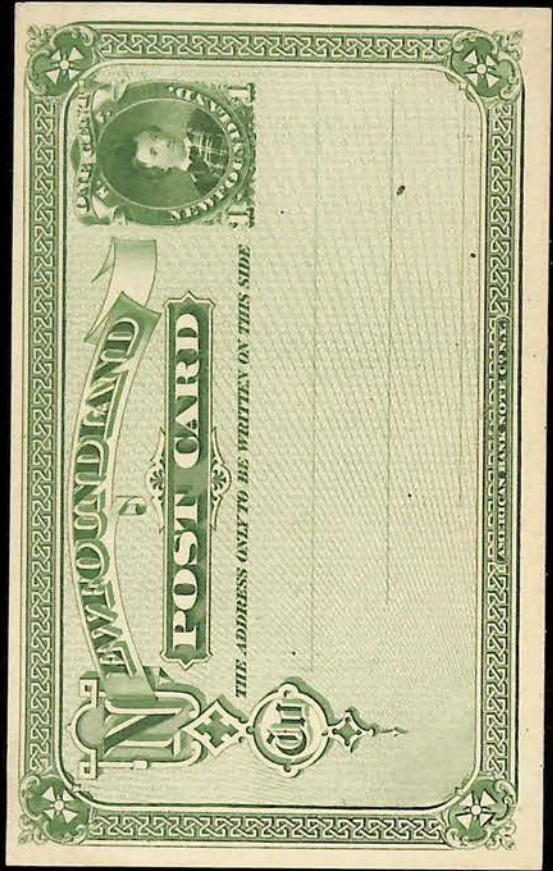


REGISTRY COVER
ST. JOHN'S to
GERMANY VIA
LIVERPOOL AND LONDON
JULY 9, 1909



ST JOHN'S "PAID ALL"
CITY OCT 14, 1897





1862-63
ISSUE



WATERMARKED
←

1871
DULL
PURPLE



1866-73



1868 PLATE PROOFS



1871 PLATE PROOFS



1876-79



1880 ISSUE



Fish American Bank Note Co Montreal

1862-63

1862-63
CORNER
BLOCK





1862-63



1865



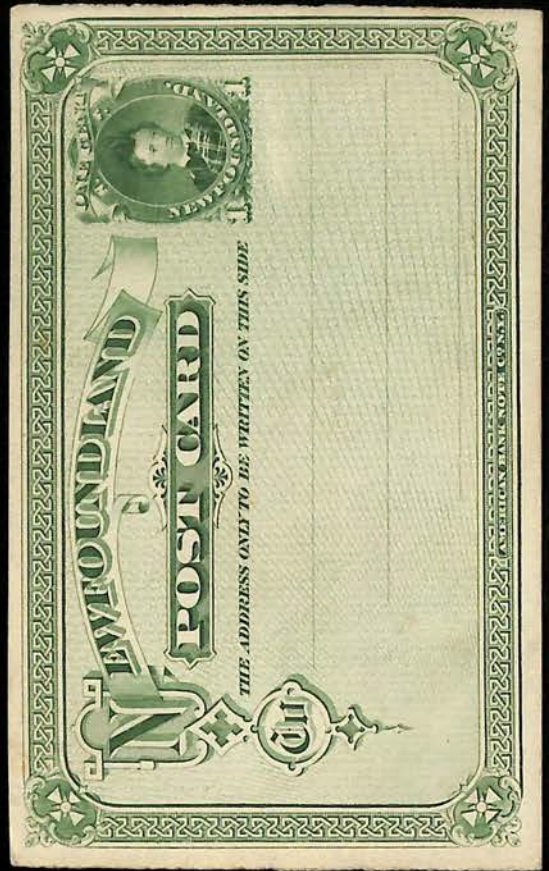
1865



1866
PLATE
PROOFS



1880
ISSUE



1887
ISSUE



PERFORATED
TWICE ↑



1890
ISSUE



1890 PINK
PAPER



PAPER CRASED
BEFORE
GUMMING
↓

1890
CABOT
SURCHARGED



1894
ISSUE



CABOT
ISSUE
1897



1894
ISSUE



1896
RE-ISSUE





CABOT
ISSUE





CABOT
ISSUE



ROYAL
FAMILY
1897-98



No PERF
↓



No PERF
→



1911 Guy
ISSUE



CREASE
FLAW IN
"E" IN JAMES
←



PERF
12 x 11

PERF
12 x 14 1/2



NO
PERF
→



CORONATION
1911
Rose Red



WAR
COMMEMORATIVE
ISSUE
1919



1920
CABOT



1923-24
PERF
13 1/2 x 14



Publicity
ISSUE
1928



1929-31



1931
BSS1



1831 NO
WATERMARK



1831
WATERMARKED
COAT OF ARMS



1932
ISS415



1929
PROVISIONAL





1029



1027

1931
AIRMAIL



IMPERIAL REPLY COUPON
(VALID ONLY FOR EXCHANGE WITHIN THE BRITISH EMPIRE.)

NEWFOUNDLAND
SELLING PRICE
5 Cents

DATE STAMP OF OFFICE OF EXCHANGE

DATE STAMP OF OFFICE OF ISSUE

THIS COUPON MAY BE EXCHANGED IN ANY PART OF THE BRITISH EMPIRE FOR A POSTAGE STAMP OR STAMPS REPRESENTING THE POSTAGE ON A PARITY WITH THE POSTAGE ON THE BRITISH EMPIRE. IT IS VALID FOR SIX MONTHS EXCLUSIVE OF THE MONTH OF ISSUE.

WATERLOW & SONS LIMITED, LONDON.

1931
BOOKLET
PAGES



NEWFOUNDLAND STAMP BOOKLET

Contents:

4 STAMPS	1 CENT
12 STAMPS	2 CENTS
4 STAMPS	3 CENTS

BOOKLET
COVERS

NEWFOUNDLAND AGENTS for

- "JAEGER" PURE WOOL PRODUCTS
- CHRISTY'S HATS
- "SAXONE" AND "CABLE" FOOTWEAR
- YARDLEY'S TOILET REQUISITES
- NORMARCH FOUR-IN-ONE WEATHER GOATS
- WESTMINSTER CIGARETTES
- JAMAICA CIGARS
- R. C. A. VICTOR, RADIO PRODUCTS
- VICTOR VICTROLAS AND VICTOR RECORDS

Souvenirs

Ayre & Sons
LIMITED

ST. JOHN'S, NEWFOUNDLAND.



1931 PANES
Plus
INTERLEAVING



LIFE SAVERS

Always leave
a nice taste in
your mouth.

GERALD S. DOYLE, Ltd.,
Agents for Newfoundland.

WE SELL

JUMBO TOBACCO,
EDGEWORTH TOBACCO,
OIL CLOTHES,
RUBBER BOOTS,
RUBBER SUITS,
GROCERIES—HARDWARE,
PROVISIONS, and FEEDS,
MOTOR CARS—new and second hand,

NEWFOUNDLAND AGENT for FORD CARS

Prices on any of the above cheerfully given on application.

A. E. HICKMAN & CO., LTD.,
ST. JOHN'S, NEWFOUNDLAND.

USE
"MATCHLESS"
The Paint of Quality.

BOWRING BROTHERS,
LIMITED.

IMPORTERS
and
EXPORTERS

Lloyd's Agents for Newfoundland.

Dickinson
PASTES
"HYGIEA" and "LAVENDER"




Have extraordinary adhesive properties.
Are extremely economical in use and stick instantly.
They do not curl paper.
They are pure and antiseptic.

OBTAINABLE FROM ALL STORES.

1932
 BOOKLET
 & PANES
 PERF 14



NEWFOUNDLAND STAMP BOOKLET



Contents: 4 STAMPS 1 CENT
 12 STAMPS 2 CENTS
 4 STAMPS 3 CENTS

NEWFOUNDLAND AGENTS for
 "JAEGER" PURE WOOL PRODUCTS
 CHRISTY HATS
 "NORTHERN PRINCE" FOOTWEAR
 RAYNESBURY FOUR IN ONE WEATHER COATS
 WESTMINSTER CIGARETTES
 JAMAICA CIGARS
 RCA - VICTOR RADIOS AND ACCESSORIES
 YARDLEY'S TOILET REQUISITES
 OVALTINE-SURE - RISE BAKING POWDER

Ayre & Sons
 LIMITED

1931
 PERF 13 1/2



- POSTAL POINTERS**
1. Address mail fully and clearly.
 2. Place return address in upper left corner.
 3. Never enclose coins or hard objects in letters.
 4. Send remittances by P. O. Money Order.
 5. Properly pack parcels
 6. Prepay postage fully.
 7. Place stamps in upper right corner.
 8. Insure parcels; register valuable letters.
 9. Mail early and often.
 10. Give your correspondents your correct P. O. Address.

LIFE SAVERS

Always leave
 a nice taste in
 your mouth.

GERALD S. DOYLE, Ltd.,
 Agents for Newfoundland

USE

"MATCHLESS"

The Paint of Quality

1932
PANES
PERF 13 1/2



For economy and good results try the
"Made in England" crystal clear
transparent paper

Also made in beautiful colours

RAYOPHANE

J. B. MITCHELL & SON, LTD.
St. John's; or

John Dickinson & Co. Ltd.
Paper makers, London, England

1932
PANES
PERF 14



LIFE SAVERS

Always leave
a nice taste in
your mouth.

GERALD S. DOYLE, Ltd.,
Agents for Newfoundland

BUY
NEWFOUNDLAND'S
BEST
BISCUITS, CANDIES
and SOFT DRINKS.

BROWNING - HARVEY, LTD.

For economy and good results try the
"Made in England" crystal clear
transparent paper
Also made in beautiful colours



J. B. MITCHELL & SON, LTD.
St. John's; or
John Dickinson & Co, Ltd.
Paper makers, London, England.

USE

"MATCHLESS"

The Paint of Quality

1932
PEAF 14



1932
PEAF 13 1/2



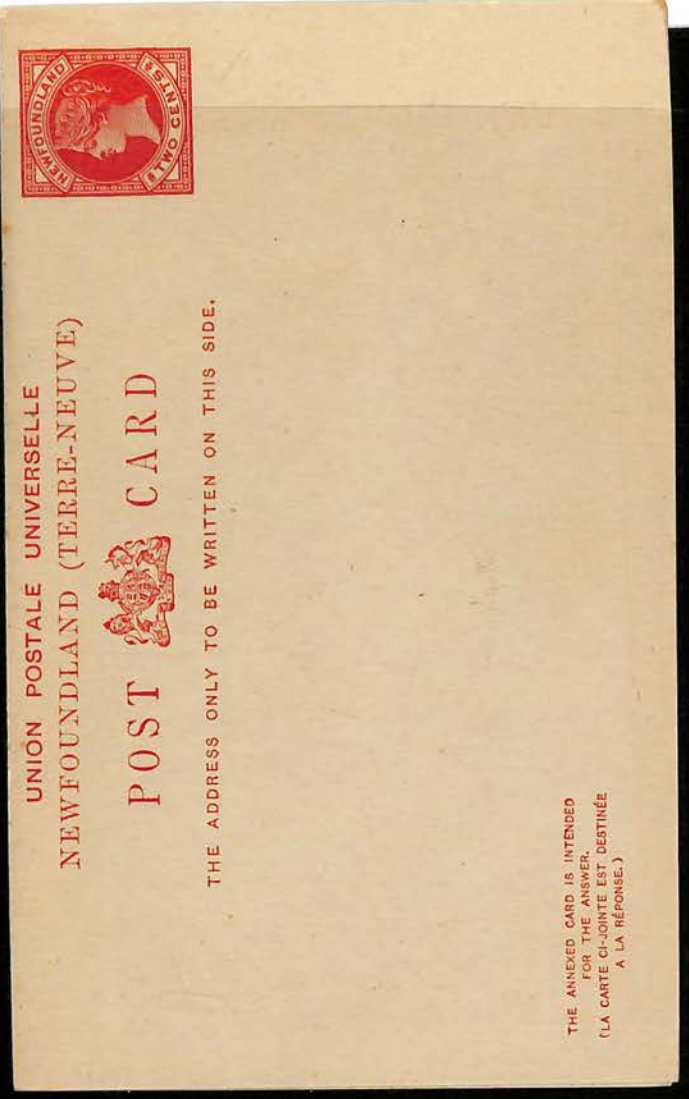
Newfoundland Stamp Booklet



Contents: 4 Stamps 1 Cent
12 Stamps 2 Cents
4 Stamps 3 Cents

NEWFOUNDLAND AGENTS for
 "Jaeger" Pure Wool Products
 Christy Hats
 "Northern Prince" Footwear
 Baynesbury Four in One Weather Coats
 Westminster Cigarettes
 Jamaica Cigars
 RCA-Victor Radios and Accessories
 Yardley's Toilet Requisites
 Ovaltine—Sure-Rise Baking Powder

Ayre & Sons
 LIMITED



1932
INDUSTRIAL
ISSUE



1932
ISSUE
PERF.
13 1/2



1933
ISSUE



1933
LABRADOR
AIR MAIL



1933 SIR
HUMPHREY
GILBERT



No
PERFS



1935
SILVER
JUBILEE



1937
CORONATION



1938 issue



1938
CORONATION
ANNIV.
ISSUE



Royal
Visit
1939



1941-44

