

INTERNATIONAL PHILATELIC EXHIBITION, OCT. 16<sup>TH</sup> TO 23<sup>RD</sup> 1926

18770

(350-802681): 2c Battle of White Plains S/S (630)<sup>A</sup>, F-VF, OG, NH  
except for light hinging in ungummed portion, couple small faults includes  
"telescoped perfs" between rows 3 & 4,

9/50!



18770

18770

18770

NEW

YORK

N.Y.

U.S.A.

Official Mail USA Postal Card Rate D Penalty for private use \$300

Official Mail USA Postal Card Rate D Penalty for private use \$300

Official Mail USA Postal Card Rate D Penalty for private use \$300

Official Mail USA Postal Card Rate D Penalty for private use \$300

Official Mail USA Postal Card Rate D Penalty for private use \$300

Official Mail USA Postal Card Rate D Penalty for private use \$300

Official Mail USA Postal Card Rate D Penalty for private use \$300

Official Mail USA Postal Card Rate D Penalty for private use \$300

Official Mail USA Postal Card Rate D Penalty for private use \$300

Official Mail USA Postal Card Rate D Penalty for private use \$300

Official Mail USA Domestic Letter Rate D Penalty for private use \$300

Official Mail USA Domestic Letter Rate D Penalty for private use \$300

Official Mail USA Domestic Letter Rate D Penalty for private use \$300

Official Mail USA Domestic Letter Rate D Penalty for private use \$300

Official Mail USA Domestic Letter Rate D Penalty for private use \$300

Official Mail USA Domestic Letter Rate D Penalty for private use \$300

Official Mail USA Domestic Letter Rate D Penalty for private use \$300

Official Mail USA Domestic Letter Rate D Penalty for private use \$300

Official Mail USA Domestic Letter Rate D Penalty for private use \$300

Official Mail USA Domestic Letter Rate D Penalty for private use \$300

Official Mail USA Domestic Letter Rate D Penalty for private use \$300

Official Mail USA Domestic Letter Rate D Penalty for private use \$300



19005

19005

W.E.S.



POSTAGE

Printed by the American Bank Note Co.

Columbian Exposition Issue

1893



(231)



(239)

2.90



(240)

4.60



(241)

30.00 11.50



(242)

27.00 14.50



(243)



(244)

35.00



(245)

34.00

2304 245

1041  
225  
144  
Cat 8740



← Missing Parts.



Shades



Some items may be damaged if left inside protective sleeve.  
We recommend removing for quality purposes.

**James T. McCusker, Inc.**

804 Broadway • Raynham, MA. 02767

Philatelists & Auctioneers, Est. 1978

800-852-0076 • [www.jamesmccusker.com](http://www.jamesmccusker.com)

Env
Col
Box
Oth

Lot #1757 (352-601736): 2c 1st Bureau Issue Specialized Collection  
Balance^, approx. 65 items on stockpages or exhibition pages, generally  
F-VF, mixed used & unused, several unused P.# strips ofEst. \$ 400-500



1895 WATERMARKED

#277 used on PC



*New York Supplementary  
Mail Cancel*



*U.S. Postal Agency  
Shanghai*



*Pago - Pago Cancels*





m. b 2.50

1894-1898 ISSUES

These three issues, 1894, 1895 and 1898 all had small triangles engraved in the upper corners of each stamp. The triangles came in three types, I, II & III. Only the "2" cent stamps had the three types. Types I and II are quite scarce, type II being by far the scarcer.



#249-TYPE I



#250 TYPE I



#267 TYPE III

With the end of these three issues, the fancy old handstamps, corks and fancy rubber handstamps almost came to an end. Mounted here are a few interesting examples of that type of cancellation.



PEN CANCEL



FANCY CORK CANCELS



RUBBER HAND STAMPS



HAND STAMP



MACHINE CANCELS

Cancellations found on the common 2¢ reds of the 1894 thru 1898 issues. In the main, they are wavy lines or straight lines, or parcel post hand cancels or killers. Even at this late date, however, one can find one or more of the interesting early "Cork" cancels, that made, or helped to make the early and late 19th. Century issues so interesting and colorful.

m. B. 2<sup>00</sup>

L 220



FANCY CORK



CORK



TARGET



FLAG



REGISTRY



WAVY LINES



WAVY LINES



STRAIGHT LINES



PACKAGE KILLER

Plate Layout Lines  
triangle I 1894  
Arrows only mark where  
sheets of 200 and 400 are  
to be cut in P.O. panes.



Plate Layout  
triangle III  
extend across  
row to arro  
printing sheet



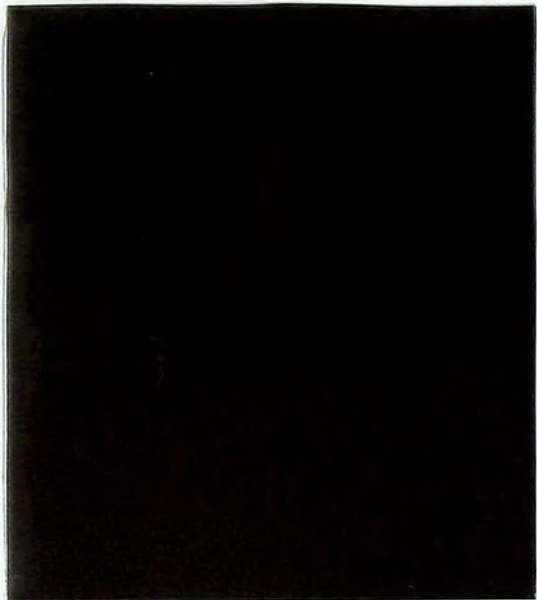
Plate Layout Lines  
Early plates of  
triangle III 1894  
arrows only



Inter mediate stage  
Line starting at each arrow  
and extending only to the  
third design. This can be  
seen only on strips of 3  
or blocks.

1898 WATERMARKED ISSUE

*Unusual Cancels*



*Expo Cancel*

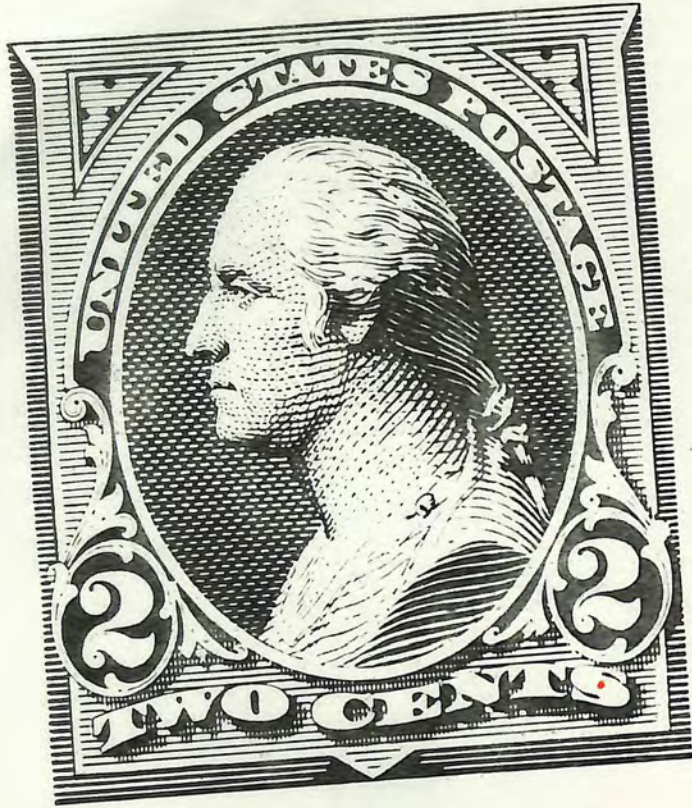


*Honolulu*

# The U.S. First Bureau Issue 1894-95-98

1¢ AND 2¢ VALUES

TYPE III



DOT IN "S" OF CENTS



# The U.S. First Bureau Issue 1894-95-98

1¢ AND 2¢ VALUES

TYPE IV



Figure 4. — 2c 1894, DIE 83, TYPE IV



FIRST TYPE IV



LAST TYPE III

Varieties

1894 Unwatermarked

A fold in the paper before perforating caused the imperforate right side.



CAUSED by  
PO. STRING  
ON  
PRINTING  
PLATE



BLANK  
TRIANGLE



LOVELY CRACKED PLATE -  
SWEEP'S FROM MARGIN INTO  
SW CORNER OF UPPER STAMP  
INTO MIDDLE ADHESIVE!  
UNLISTED



Many of the sheets of this issue were poorly perforated. Edges are ragged with many missed perforations.



Poor placement of the perforating wheel.



932. PPF 250\* (2¢ 1894); nice diagonal PPF.  
249



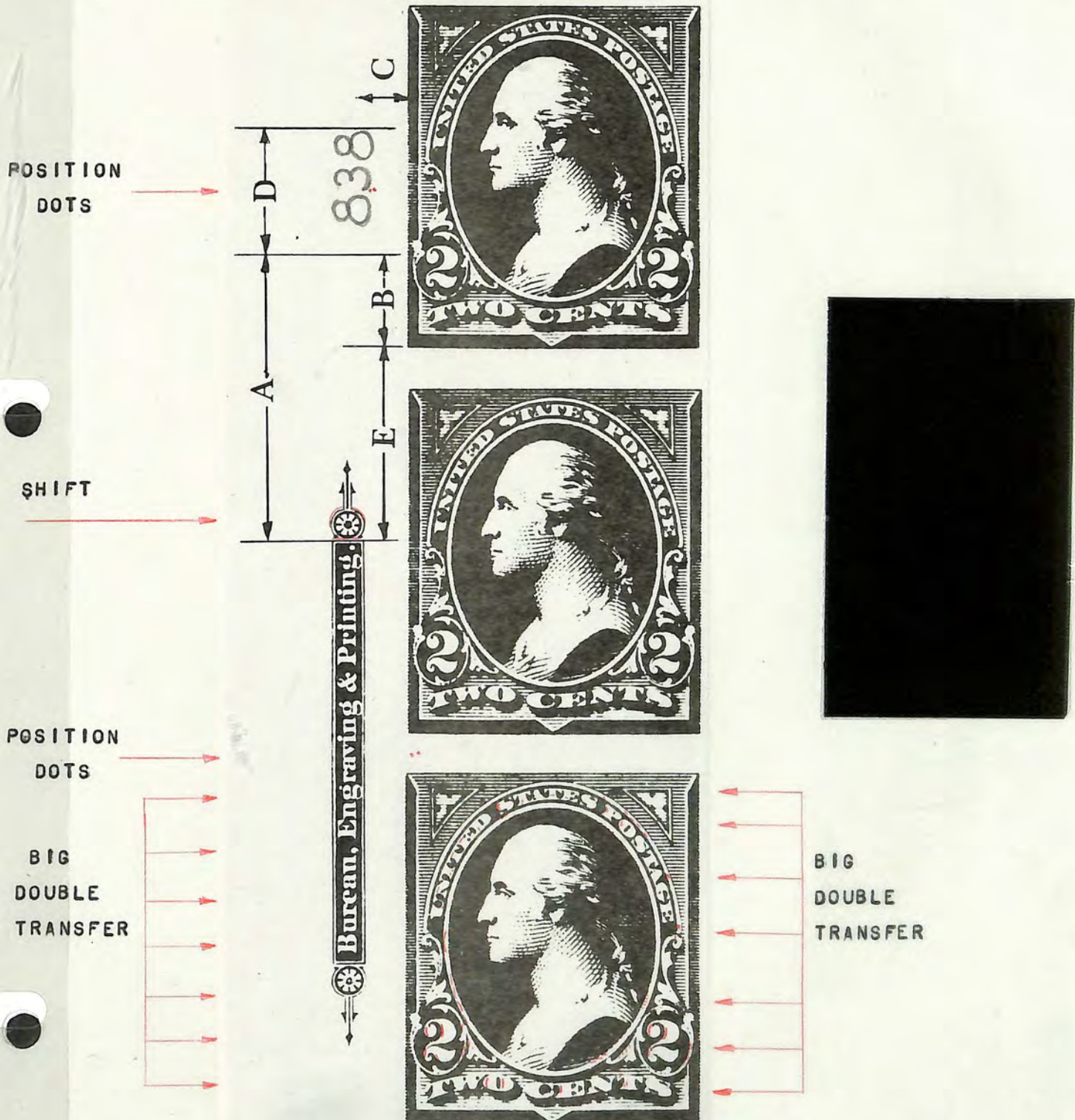
SC 260  
FOLDOVER  
PFC 375667



# The U.S. First Bureau Issue 1894-95-98

1¢ AND 2¢ VALUES

PLATE VARIETIES; DOUBLE TRANSFERS, SHIFTS, POSITION DOTS, ETC.



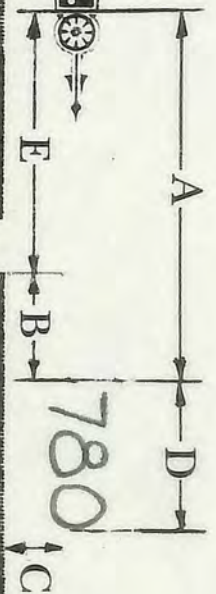
# The U.S. First Bureau Issue 1894-95-98

1¢ AND 2¢ VALUES

PLATE VARIETIES: RELIEF BREAKS - BLANK TRIANGLE VARIETY



Bureau, Engraving & Printing.



RELIEF BREAKS OF BACKGROUND LINES WITHIN RIGHT TRIANGLE CAUSES APPEARANCE OF BLANK TRIANGLE IN STAMP BESIDE PLATE NUMBER. VARIOUS STAGES OF RELIEF BREAK IN THE SAME TRIANGLE OF THE OTHER TWO STAMPS OF THE STRIP.

# The U.S. First Bureau Issue 1894-95-98

1¢ AND 2¢ VALUES

TYPE III

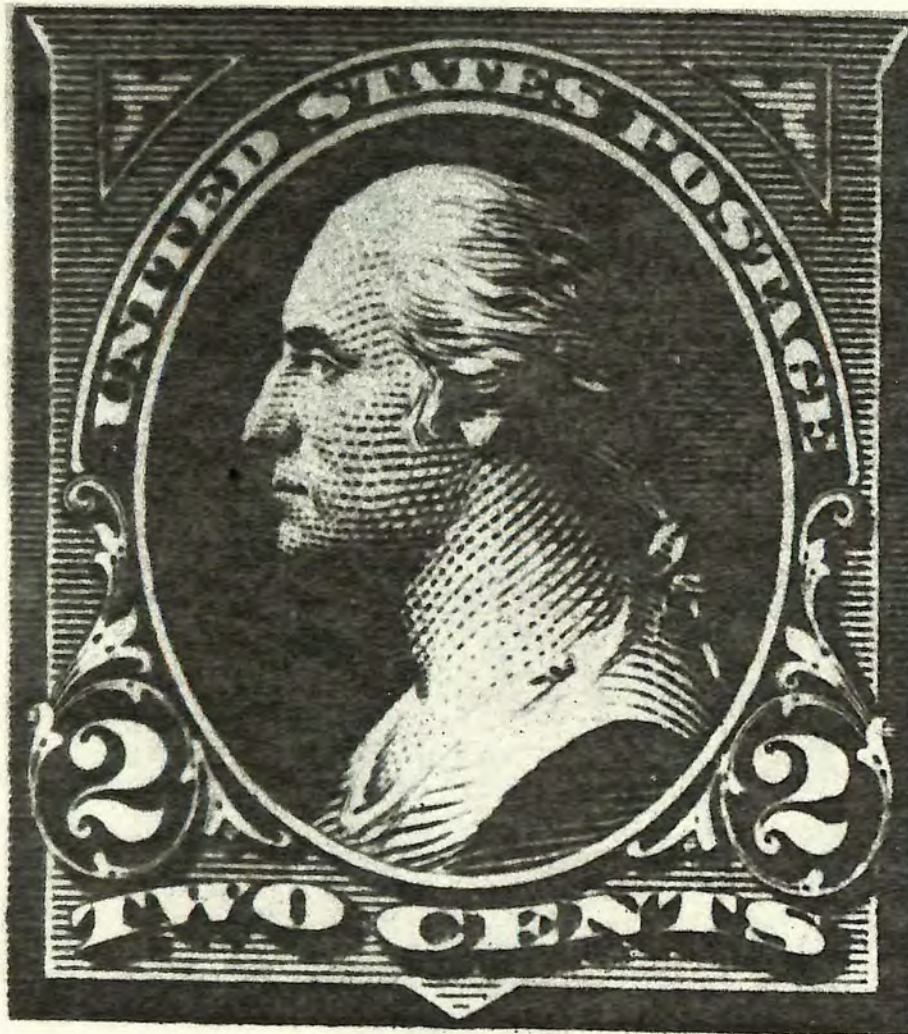
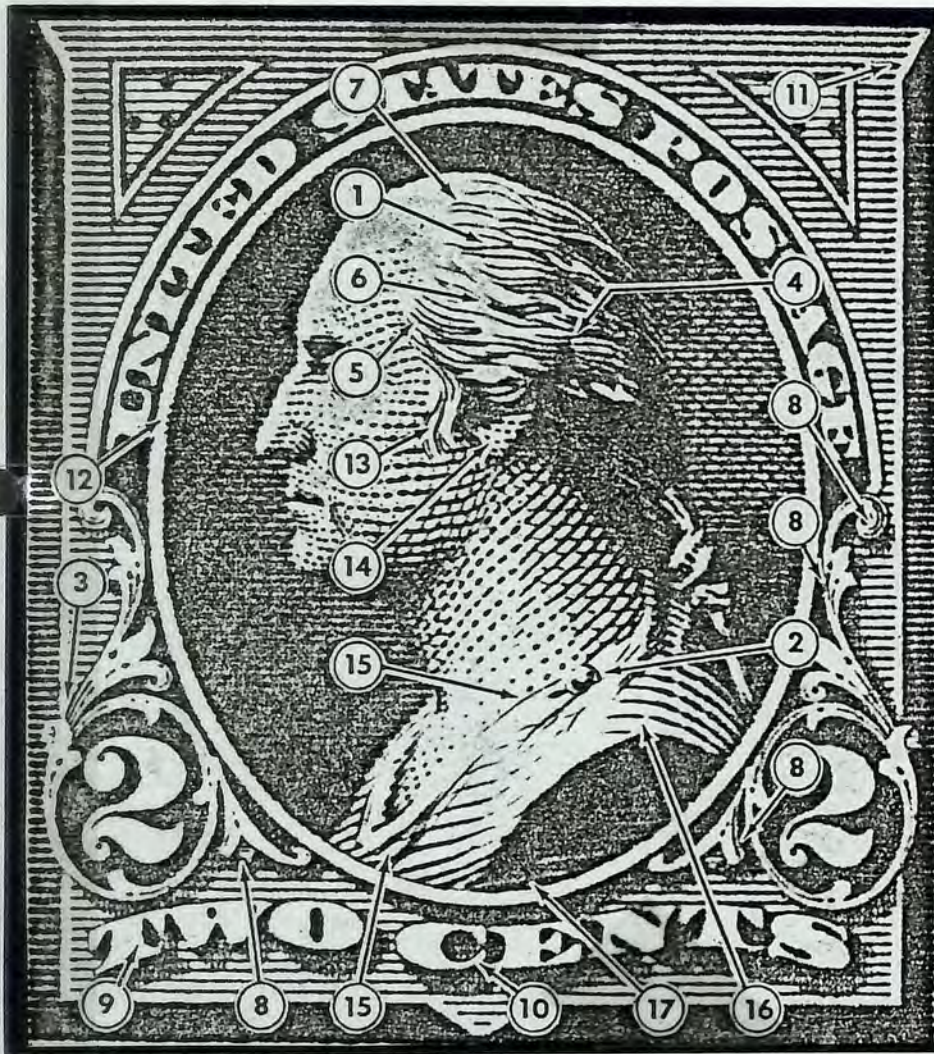


Figure 3. — 2c 1894, DIE 81, TYPE III  
Not used but Type III stamps are similar.



## 2 CENT SERIES OF 1894 TYPE IV

The Types I, II and III have been shown in the previous pages of this Exhibit. The distinction between Types I, II and III are quite obvious and easily determined. Type IV was discussed in the Bureau Specialist, the BLA Association's publication first in June of 1937 and edited by H.M. Southgate and George W. Brett. No separate listing or recognition was given to this Stamp in the Scott Catalogs. In October of 1955 George Brett wrote a second article in the Bureau Specialist in regard to this 2 Cent Type IV of 1894. The Type IV as described by Mr. Brett is shown below. There are many characteristics of this Stamp that show minor variations indicating that it was made from a different die. The illustration below shows 16 variations that Mr. Brett has pointed out. The first are considered to be major variations and they are listed below.



1. Two-thirds of the way to the head from the ear two long lines jut out. The upper one is characterized by a heavy end on Type IV as compared with Type III and being in an otherwise light area is easily the most outstanding and recognizable difference. This particular hair line is a curved one that slopes down at both left and right ends, the left segment being the longer and the one that on Type IV is heavier for a greater length than on Type III. As a light line it extends even farther to the left on Types III and IV but this will seldom be noted on Stamps.
2. The back of the toga button in Type IV is heavily outlined or shaded at the back. As this is a heavy line compared with the light, almost non-existent, line on Type III it is also a major difference that is helpful for use the case of heavily cancelled copies.

The other minor variations are explained more clearly in Mr. Brett's article and it is suggested that a sincere student study this article for further clarification. An example of Types I, II, III and IV are exhibited below.



Type I



Type II



Type III



Type IV

F 21331



F 21279



F 21323



F 21248



F 21257



21263

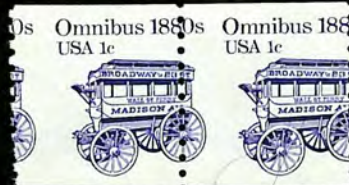
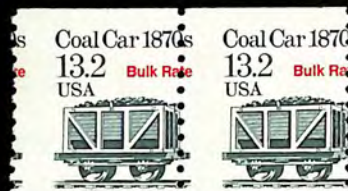












34

George Wythe

Patriot



USA

14



