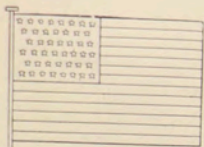


# UNITED STATES.



G. Washington.



A. Lincoln.



U. S. Grant.



David H. Bassett

DIVISIONS—45 States, 5 Territories and 1 Federal District. GOVERNMENT—Republic. AREA—3,602,990 square miles. POPULATION—62,622,250. CAPITAL—Washington, with 230,392 inhabitants. PRESIDENT—William McKinley, born January 29th, 1843. Term began March 4th, 1897. STANDARD COIN—Dollar=100 cents.

## GENERAL ISSUES.

1847.

Franklin. 5 C. BROWN.	Washington.] 10 C. BLACK.
-----------------------------	---------------------------------


1851-56.

Imperforate. Franklin.	Ornaments cut off. 1 C.	Broken Circle. 1 C.	Washington. 3 C.	Jefferson. 5 C.	Washington. 10 C.	Washington. 12 C.
Ornaments complete. 1 C.	BLUE.	BLUE.	RED.	BROWN.	GREEN.	BLACK.
BLUE.						

1856.

Imperforate. Washington. 24 C. LILAC.	Franklin. 30 C. ORANGE.	Washington. 90 C. BLUE.
--	-------------------------------	-------------------------------

1856-57.

Same. Perforated. Ornaments complete. 1 C.	Ornaments cut off. 1 C.	Broken circle. 1 C.	3 C. RED.		5 C. BRICK RED.	5 C. RED-BROWN.
BLUE.	BLUE.	BLUE.				



Type 6

# UNITED STATES.

1855-60.

Same. 5 C. BROWN.	Ornaments at top and bottom cut off. 5 C. BROWN.	10 C. GREEN.	12 C. BLACK.	24 C. LILAC.	30 C. ORANGE.	90 C. BLUE.
-------------------------	---	-----------------	-----------------	-----------------	------------------	----------------


AUGUST 1861.

Similar to last. Numerals in upper corners. 1 C. INDIGO.	3 C. BROWN RED.	5 C. BROWN.	10 C. DARK GREEN.	12 C. BLACK.
--	--------------------	----------------	----------------------	-----------------



24 C. VIOLET.	30 C. RED ORANGE.	90 C. DULL BLUE.
------------------	----------------------	---------------------

SEPTEMBER 1861.

3 C. ROSE.	3 C. DARK LAKE.	5 C. BUFF.		
---------------	--------------------	---------------	---	--

LAID PAPER.

Same. 24 C. RED LILAC.	30 C. ORANGE.	90 C. BLUE.	Same. 1 C. BLUE.	2 C. BLACK.	3 C. ROSE.
------------------------------	------------------	----------------	------------------------	----------------	---------------



1862-66.

		5 C. RED BROWN.	5 C. BRICK RED.		Lincoln. 15 C. BLACK.	24 C. LILAC.
---	---	--------------------	--------------------	---	-----------------------------	-----------------



# UNITED STATES.

1868.

Same designs. Embossing covering entire stamp. 3 C. ROSE.	5 C. BROWN.	30 C. ORANGE.	Same. Embossing measuring 15 x 18 mm. 3 C. ROSE.	Same. Embossing measuring 18 x 16 mm. 3 C. ROSE.	Same. Embossing measuring 12 x 14 mm. 2 C. BLACK.	3 C. ROSE.
---	----------------	------------------	--	--	---	---------------

1868.

Same designs. Embossing measuring 11 x 13 mm. 1 C. BLUE.	2 C. BLACK.	3 C. ROSE.	5 C. GREEN.	12 C. BLACK.	15 C. BLACK.
--	----------------	---------------	----------------	-----------------	-----------------

1868.



Same designs. Embossing measuring 9 x 13 mm. 1 C. BLUE.	2 C. BLACK.		5 C. BROWN.		12 C. BLACK.
---	----------------	---	----------------	--	-----------------

1868.

Same. 15 C. BLACK.		30 C. ORANGE.	90 C. BLUE.
--------------------------	--	------------------	----------------

1875.





RE-ISSUE OF 1861-62.


White Paper and White Gum. 1 C. BLUE.	2 C. BLACK.	3 C. BROWN RED.	5 C. LIGHT BROWN.	10 C. GREEN.	12 C. BLACK.
--	----------------	--------------------	----------------------	-----------------	-----------------

15 C. BLACK.	24 C. DEEP VIOLET.	30 C. BROWNISH ORANGE.	90 C. BLUE.
-----------------	-----------------------	------------------------------	----------------

# UNITED STATES.

1869.

Embossed on back. Franklin. 1 C. BUFF.			Washington. 6 C. BLUE.			Landing of Columbus. 15 C. BROWN and BLUE.
---	---	---	------------------------------	---	--	--

	Variety. Picture framed. 15 C. BROWN AND BLUE.	Declaration of Independence. 24 C. GREEN and PURPLE.	Eagle. 30 C. BLUE and CARMINE.	Lincoln. 90 C. BLACK AND CARMINE.
---	---	--	--------------------------------------	---

Same as above. Picture inverted. 15 C. BROWN AND BLUE.	Picture inverted. 24 C. GREEN AND PURPLE.	Flags inverted. 30 C. BLUE AND CARMINE.
---	---	---

1875.

RE-ISSUE OF 1869 WITHOUT EMBOSING.

1 C. BUFF.	2 C. BROWN.	3 C. BLUE.	6 C. BLUE.	10 C. YELLOW.	12 C. GREEN.	Picture not framed. 15 C. BROWN AND BLUE.
---------------	----------------	---------------	---------------	------------------	-----------------	---

24 C. GREEN and PURPLE.	30 C. BLUE AND CARMINE.	90 C. BLACK AND CARMINE.
----------------------------	----------------------------	-----------------------------

1870-71.

Printed by the National Bank Note Co.

With embossing. Profile to left. Franklin. 1 C. ULTRAMARINE.	Jackson. 2 C. RED BROWN.	Washington. 3 C. GREEN.	Lincoln. 6 C. CARMINE.	Stanton. 7 C. VERMILION.	Jefferson. 10 C. BROWN.	Clay. 12 C. DULL VIOLET.
--	--------------------------------	-------------------------------	------------------------------	--------------------------------	-------------------------------	--------------------------------

Webster. 15 C. ORANGE.	Scott. 24 C. PURPLE.	Hamilton. 30 C. BLACK.	Perry. 90 C. CARMINE.
------------------------------	----------------------------	------------------------------	-----------------------------



# UNITED STATES.

1870-71.

Same. Without Embossing. 1 C. ULTRAMARINE.	2 C. RED BROWN.	3 C. GREEN.	6 C. CARMINE.			
---	--------------------	----------------	------------------	---	--	---

			90 C. CARMINE.
---	---	---	-------------------

1873.

Printed by the Continental Bank Note Co.  
Same as Issue of 1870-71 with secret marks.

1 C. ULTRAMARINE.		3 C. GREEN.		7 C. ORANGE VERMILION.	10 C. BROWN.	12 C. BLACKISH VIOLET.
----------------------	---	----------------	---	------------------------------	-----------------	------------------------------

1873.

1875.

	24 C. BLUISH PURPLE.	30 C. BLACK.			
--	-------------------------	-----------------	--	---	--



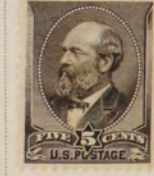
1879.

Printed by the American Bank Note Co.  
Same as Issue of 1873 on soft paper.

Same. 1 C. BLUE.	2 C. VERMILION.	3 C. GREEN.			10 C. BROWN.
------------------------	--------------------	----------------	---	--	-----------------

1879.

1882.

	15 C. ORANGE.		90 C. CARMINE.	
---	------------------	---	-------------------	--



# UNITED STATES.

1882.



1883.



1887.



1888.

1890-93.



Same as 1890-93

In upper corners.



Madison.  
\$2.00  
SAPPHIRE.

Marshall.  
\$5.00  
DARK GREEN.

1895.



Same.  
Triangle II.  
2 C.  
CARMINE.





# UNITED STATES.

## Columbian Issue.

1893.

Columbus in Sight of Land.

1 C.  
BLUE.

Landing of Columbus.  
2 C.  
VIOLET.

Flagship of Columbus.  
3 C.  
GREEN.

Columbus.  
3 C.  
PINK.

Columbus Soliciting Aid of Isabella.  
5 C.  
CHOCOLATE.

Columbus Welcomed at Barcelona.  
6 C.  
PURPLE.

Columbus Presenting Natives.  
10 C.  
BLACK BROWN.

Columbus Announcing His  
Discovery.  
15 C.  
DARK GREEN.

Columbus at La Rabida.  
30 C.  
ORANGE BROWN.

Recall of Columbus.  
50 C.  
SLATE BLUE.

Isabella Pledging Her Jewels.  
\$1.00  
SALMON.

Columbus in Chains.  
\$2.00  
BROWN RED.

Columbus Describing his Third  
Voyage.  
\$3.00  
YELLOW GREEN.

Portraits of Columbus and Isabella.  
\$4.00  
CARMINE.

Profile of Columbus.  
\$5.00  
BLACK.



# UNITED STATES.

1895.

Watermarked U. S. P. S.



1898. - 99



Mississippi Exposition Issue.

1898.



Marquette on the Mississippi.

1 C.

DARK GREEN.

Farming in the West.

2 C.

COPPER RED.

Indian Hunting Buffalo.

4 C.

ORANGE.

Fremont on Rocky Mountains.

6 C.

DARK BLUE.



*All unused*

Troops Guarding Train.

8 C.

BROWN VIOLET.

Hardships of Emigration.

10 C.

GRAY VIOLET.

Western Mining Prospector.

50 C.

SAGE GREEN.

*genuine*

Western Cattle in Storm.

\$1.00

BLACK.

Mississippi River Bridge.

\$2.00

ORANGE BROWN.



# UNITED STATES.

OFFICIAL STAMPS.

1873.

## Department of Agriculture.

Name of Department above. 1 C. YELLOW.	2 C. YELLOW.	3 C. YELLOW.	6 C. YELLOW.	10 C. YELLOW.	12 C. YELLOW.
---	-----------------	-----------------	-----------------	------------------	------------------



15 C. YELLOW.	24 C. YELLOW.	30 C. YELLOW.
------------------	------------------	------------------

## Department of the Interior.

Name. 1 C. VERMILION.				10 C. VERMILION.	12 C. VERMILION.
-----------------------------	--	--	--	---------------------	---------------------

15 C. VERMILION.	24 C. VERMILION.	30 C. VERMILION.	90 C. VERMILION.
---------------------	---------------------	---------------------	---------------------

## Department of Justice.

Name. 1 C. PURPLE.	2 C. PURPLE.	3 C. PURPLE.	6 C. PURPLE.	10 C. PURPLE.	12 C. PURPLE.
--------------------------	-----------------	-----------------	-----------------	------------------	------------------

15 C. PURPLE.	24 C. PURPLE.	30 C. PURPLE.	90 C. PURPLE.
------------------	------------------	------------------	------------------

# UNITED STATES.

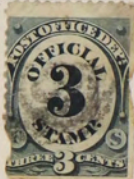
OFFICIAL STAMPS.

1873.

## Executive Department.

Name. 1 C. CARMINE.	2 C. CARMINE.	3 C. CARMINE.	6 C. CARMINE.	10 C. CARMINE.
---------------------------	------------------	------------------	------------------	-------------------

## Post Office Department.

Numeral in oval. 1 C. BLACK.	2 C. BLACK.		6 C. BLACK.	10 C. BLACK.	12 C. BLACK.	15 C. BLACK.
------------------------------------	----------------	---	----------------	-----------------	-----------------	-----------------

24 C. BLACK.	30 C. BLACK.	90 C. BLACK.
-----------------	-----------------	-----------------

## State Department.

Name. 1 C. GREEN.	2 C. GREEN.	3 C. GREEN.	6 C. GREEN.	7 C. GREEN.	10 C. GREEN.
-------------------------	----------------	----------------	----------------	----------------	-----------------

12 C. GREEN.	15 C. GREEN.	24 C. GREEN.	30 C. GREEN.	90 C. GREEN.
-----------------	-----------------	-----------------	-----------------	-----------------

		\$10.00 GREEN AND BLACK.	
---	---	-----------------------------	--



# UNITED STATES.

OFFICIAL STAMPS.

1873.

Navy Department.

Name. 1 C. BLUE.	2 C. BLUE.	Error. 2 C. GREEN.	3 C. BLUE.	6 C. BLUE.	7 C. BLUE.	10 C. BLUE.
------------------------	---------------	--------------------------	---------------	---------------	---------------	----------------

12 C. BLUE.	15 C. BLUE.	24 C. BLUE.	30 C. BLUE.	90 C. BLUE.
----------------	----------------	----------------	----------------	----------------

Treasury Department.



12 C. BROWN.		24 C. BROWN.	30 C. BROWN.	90 C. BROWN.
-----------------	--	-----------------	-----------------	-----------------

War Department



12 C. RED.	15 C. RED.	24 C. RED.	30 C. RED.	90 C. RED.
---------------	---------------	---------------	---------------	---------------

# UNITED STATES.

## UNPAID LETTER STAMPS. 1879.

Numerals in centre. "Postage Due." 1 C. YELLOW BROWN.	2 C. YELLOW BROWN.	3 C. YELLOW BROWN.	5 C. YELLOW BROWN.	10 C. YELLOW BROWN.	30 C. YELLOW BROWN.	50 C. YELLOW BROWN.
--	-----------------------	-----------------------	-----------------------	------------------------	------------------------	------------------------



### 1883.

Same. 1 C. RED BROWN.	2 C. RED BROWN.	3 C. RED BROWN.	5 C. RED BROWN.	10 C. RED BROWN.	30 C. RED BROWN.	50 C. RED BROWN.
-----------------------------	--------------------	--------------------	--------------------	---------------------	---------------------	---------------------

### 1891.



### 1894.



### 1895.

#### Watermarked U. S. P. S.





UNITED STATES.

NEWSPAPER STAMPS.

1865-67.

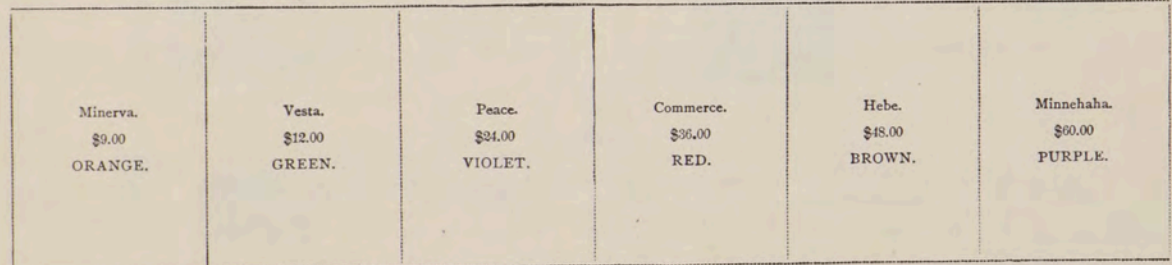
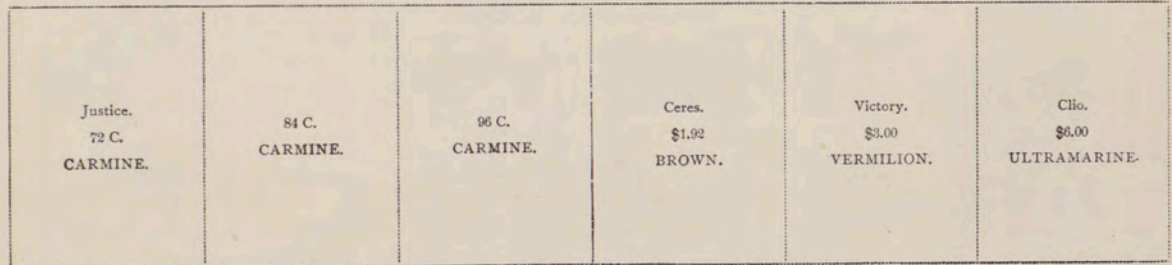
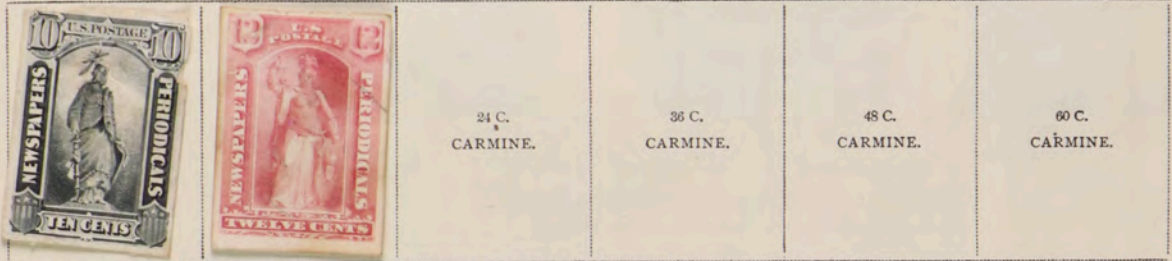
Washington.  
Blue Border.  
5 C.  
BLUE.



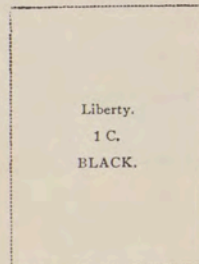
# UNITED STATES.

## NEWSPAPER STAMPS.

1875.



1885.





# UNITED STATES.

## NEWSPAPER STAMPS.

1895.

Similar to previous issue. America. 1 C. BLACK.	2 C. BLACK.	5 C. BLACK.	10 C. BLACK.	Astraea. 25 C. CARMINE.	Astraea. 50 C. CARMINE.
---	----------------	----------------	-----------------	-------------------------------	-------------------------------

Victory. \$2.00 SCARLET.	Clio. \$5.00 DARK ULTRAMARINE.	Vesta. \$10.00 GREEN.	Peace. \$20.00 SLATE.	Commerce. \$50.00 CARMINE.	Indian. \$100.00 PURPLE.
--------------------------------	---	-----------------------------	-----------------------------	----------------------------------	--------------------------------

### Watermarked U. S. P. S.

 <p>1 U.S. POSTAGE NEWSPAPERS PERIODICALS ONE CENT</p>	2 C. BLACK.	 <p>U.S. POSTAGE NEWSPAPERS PERIODICALS FIVE CENTS</p>	 <p>U.S. POSTAGE NEWSPAPERS PERIODICALS TEN CENTS</p>	25 C. CARMINE.	50 C. CARMINE.
--	----------------	--	---	-------------------	-------------------

\$2.00 SCARLET.	\$5.00 DARK ULTRAMARINE.	\$10.00 GREEN.	\$20.00 SLATE.	\$50.00 CARMINE.	\$100.00 PURPLE.
--------------------	--------------------------------	-------------------	-------------------	---------------------	---------------------

# UNITED STATES.

## SPECIAL DELIVERY.

1885.



1888.



1893.



1894.



1895.

Watermarked U. S. P. S.



## Carrier's Stamps.

### GENERAL ISSUE.

1851.

Head of Franklin to  
left.  
1 C.  
BLUE ON PINK.

Eagle.  
1 C.  
BLUE.

## Baltimore.

1851.



1 C.  
RED.

1852.



1 C.  
BLUE.

1852.



Bluish Paper.  
1 C.  
BLUE.

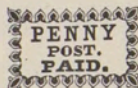
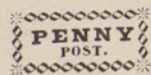
White Paper.  
1 C.  
RED.

Bluish Paper.  
1 C.  
RED.

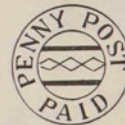
White Paper.  
1 C.  
GREEN.

## Boston.

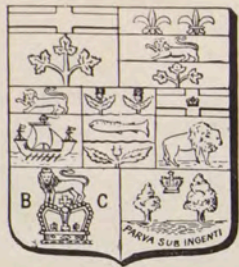
1853.



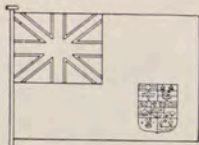
Bluish Paper.  
1 C.  
BLUE.







# CANADA.



GOVERNMENT—British Colony since 1763. AREA—3,456,383 square miles. POPULATION—4,833,239. CAPITAL—Ottawa, with 44,150 inhabitants. STANDARD COIN—1 dollar (\$) = 5 shillings = 100 cents.

1851-52.



Laid Paper.  
3 P.  
RED.



Laid Paper.  
6 P.  
PURPLE.



Laid Paper.  
12 P.  
BLACK.

1855-57.



Same.  
Perforated.  
3 P.  
RED.

1858.

Same.  
Perforated.  
½ P.  
PINK.

6 P.  
LILAC.

1859-64.

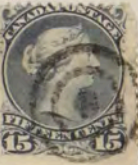


1868-69.



Same.  
Laid Paper.  
3 C.  
BRIGHT RED.

1868-77.



Laid Paper.  
15 C.  
LILAC.

Watermarked Large Letters.

1868-69.

Same types.  
½ C.  
BLACK.

1 C.  
BROWN RED.

1 C.  
YELLOW.

2 C.  
GREEN.

3 C.  
BRIGHT RED.

6 C.  
BROWN.

12½ C.  
BLUE.

15 C.  
LILAC.



# CANADA.

1869-75.



1882.



1888.



6 C.  
RICH BROWN.

1893.



1897.

Jubilee Issue.



6 C.  
RICH BROWN.

8 C.  
VIOLET.



20 C.  
VERMILION.



50 C.  
ULTRAMARINE.

\$1.00  
RED.

\$2.00  
DARK PURPLE.

\$3.00  
YELLOW BROWN.



\$4.00  
PURPLE.

\$5.00  
OLIVE.



1897-98.



6 C.  
CHOCOLATE.

10 C.  
BROWN VIOLET.







SPECIAL DELIVERY STAMP.  
1898.

REGISTERED LETTER STAMPS.  
1875.

1889.



8 C.  
BLUE.

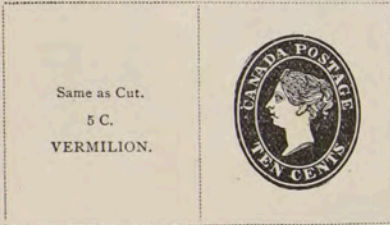
Same.  
2 C.  
VERMILION.

ENVELOPES.

1860.

1877.

1895.

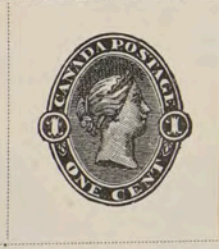
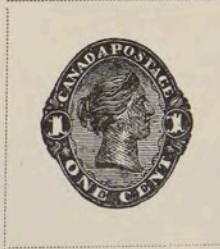


ENVELOPE.  
1898.

WRAPPERS.  
1882.

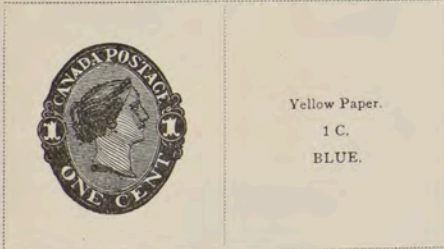
1875.

1885.



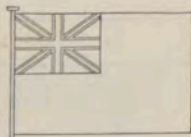
1887.

1892-95.

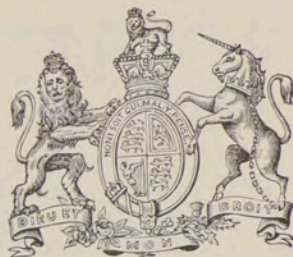




# GREAT BRITAIN AND IRELAND.



Victoria.

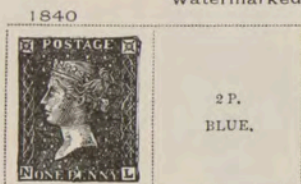


DIVISIONS—England, Ireland, Scotland, Wales, and adjacent Islands. GOVERNMENT—Limited Monarchy. AREA—120,979 square miles. POPULATION—38,104,975. CAPITAL—London, with 4,411,271 inhabitants. QUEEN—Victoria, born May 24th, 1819, succeeded June 20th, 1837. STANDARD COIN—1 pound (\$4.86) = 20 shillings; 1 shilling = 12 pence.

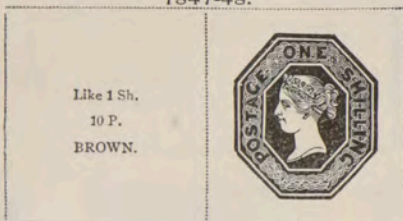
This was the first Government to issue Postage Stamps.

## Watermarked Small Crown.

Like next cut.  
V. R.  
In upper corners.  
1 P.  
BLACK.



## Unwatermarked- 1847-48.



## Watermarked V. R. 1854.



## Watermarked Small Crown. 1854-55.

Perforated. Type of 1840. Bluish Paper. 1 P. RED.	Type of 1841. 2 P. BLUE.	Re-engraved. 1 P. RED.
---	--------------------------------	------------------------------

Same. Bluish Paper. 1 P. RED.	2 P. BLUE.
--	---------------



## Watermarked Small Garter. 1855.



## Watermarked Medium Garter. 1856.

Same. Bluish Paper. 4 P. ROSE.	White Paper. 4 P. ROSE.
---	-------------------------------

## Watermarked Large Garter. 1857.

Same. 4 P. ROSE.
------------------------

## Watermarked Heraldic Emblems 1856.



## Watermarked Large Crown. 1858-64.



## Watermarked Large Garter. 1862.



## Watermarked Heraldic Emblems. 1862.





# GREAT BRITAIN AND IRELAND.

Watermarked Large Garter.  
1865.



Watermarked Heraldic Emblems.  
1865-67.



Watermarked Spray of Rose.  
1867-69.



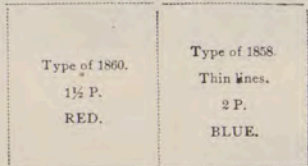
Watermarked Maltese Cross.  
1867.



Watermarked  
Half Penny.  
1870.



Watermarked Large Crown.  
1869-70.



Watermarked  
Spray of Rose.  
1872.



Watermarked  
Anchor.  
1875.



Watermarked Spray of Rose.  
1873-74.



Watermarked Large Garter.  
1876-77.



Watermarked Maltese Cross.  
1878.



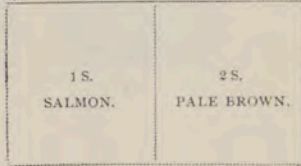
Watermarked  
Orb.  
1876.



Watermarked  
Orb.  
Garter.



Watermarked Spray of Rose.  
1880.



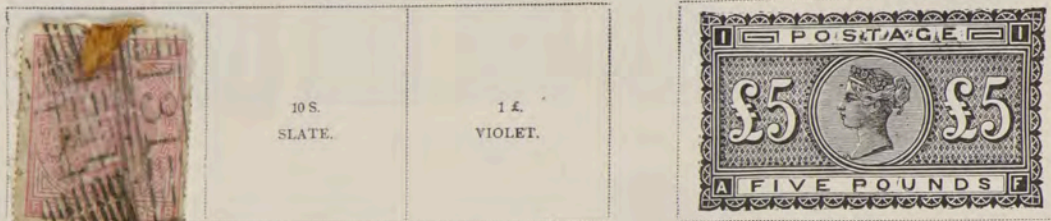
Watermarked Large Crown.  
1880-81.





# GREAT BRITAIN AND IRELAND.

Watermarked Anchor.  
1882.



1883.

Watermarked Large Crown.

1884.



1883-84.



Watermarked Anchor.  
1883-84.

Watermarked Three Large Crowns.  
1883-84.



Watermarked Large Crown.  
1887-92.





# GREAT BRITAIN AND IRELAND.

Watermarked Three Orbs.  
1888.

Same as previous type.  
£1.  
VIOLET.

Watermarked Three Crowns.  
1891.



## For British Offices in the Levant.

1885.



1887.



1889.



1892.



1896.



## ENVELOPE.

1893.



## British Offices in Morocco.

1898.



25 C.  
BLUE.

40 C.  
RED BROWN.

50 C.  
LILAC.

1 P.  
LIGHT BROWN  
AND BLUE.

2 P.  
BLACK AND  
CARMINE.

## REGISTRATION ENVELOPE.

Gibraltar Registration Envelope  
with same Surcharge.  
30 C.  
RED.

## WRAPPERS.

Gibraltar Wrappers with  
same Surcharge.  
5 C.  
GREEN.

10 C.  
CARMINE.