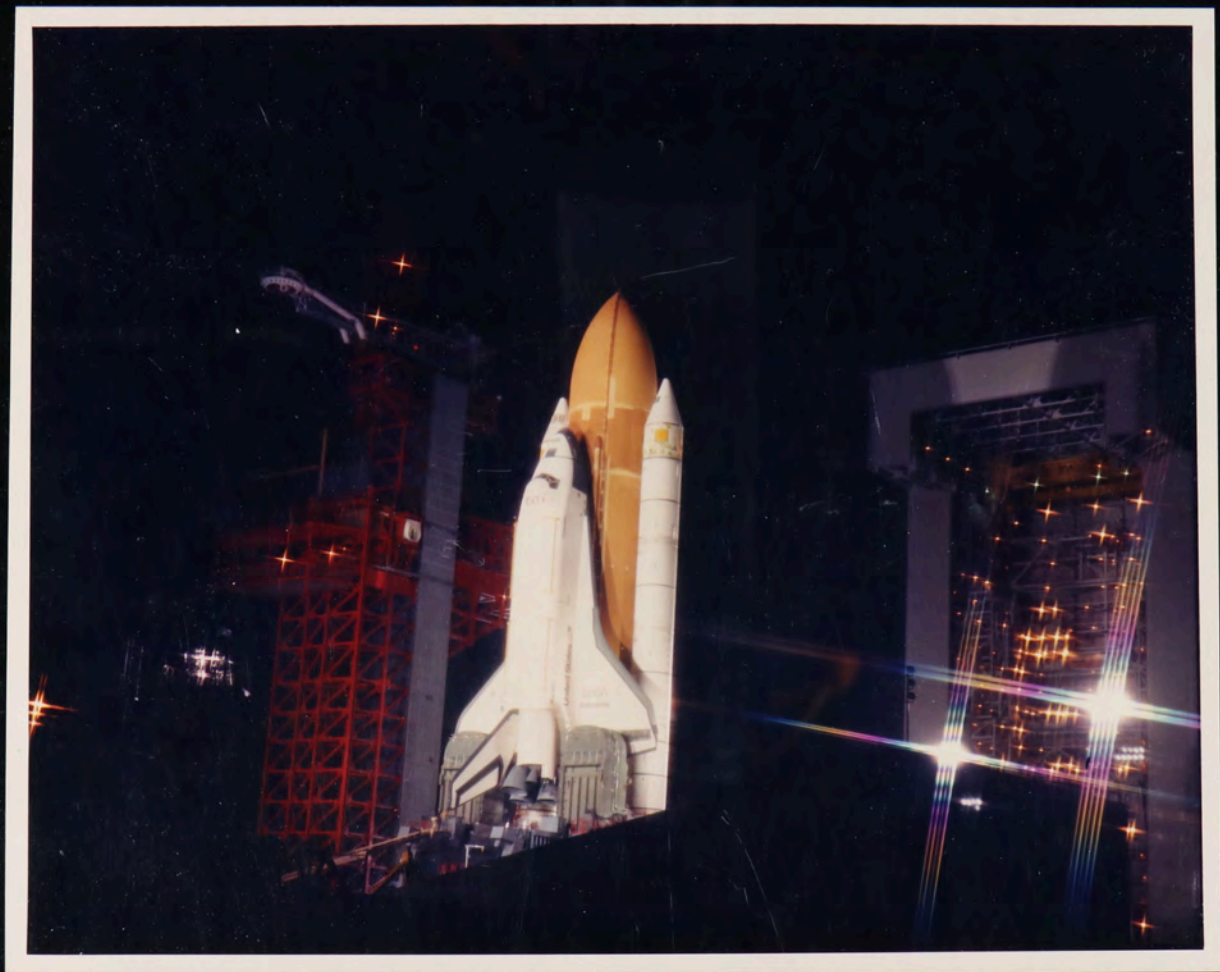




ROBERT A. HARRIS
SPACE & AERONAUTICS DIVISION
PHOTOGRAPHIC SERVICES
A-5416

4-12-66

7008-39-210D







RIGF
TO BE ESCORTED
005

KENNEDY SPACE CENTER
LAW ENFORCEMENT
011

AREA PERMIT
KENNEDY SPACE CENTER
PAD B
VISITOR
TO
BE ESCORTED
52

TITAN CENTAUR
HAZARDOUS RELIEF
LC-41
33

FLIGHT READINESS REVIEW
STS-7
NASA

WRITER
John F. Kennedy Space Center
National Aeronautics and Space Administration

HAZARDOUS OPERATIONS
74

CONSTRUCTION

AREA PERMIT
KENNEDY SPACE CENTER
ML-MSS
PAD A
VISITOR
51

Display with this side showing to vehicle.
This vehicle permit authorizes the bearer to enter any of the viewing sites and the press site to support Public Affairs activities.
Each vehicle occupant must also have a Staff badge.

R. G. Smith, Director

W. Keith E. Lopez
CHIEF, SECURITY OFFICE

R. G. Smith, Director

R. G. Smith, Director
VIEWING SITE

Kenneth E. Lopez
Kenneth E. Lopez

RECEIVED
OCT 20 1971

W. Keith E. Lopez
CHIEF, SECURITY OFFICE

Forest S. McCartney
Forest S. McCartney

R. G. Smith, Director

W. Keith E. Lopez
CHIEF, SECURITY OFFICE

W. Keith E. Lopez
CHIEF, SECURITY OFFICE

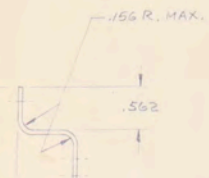
NASA
NEWS MEDIA
DATE MDD 12
NO.

Kennedy Space Center, FL
0202

126521

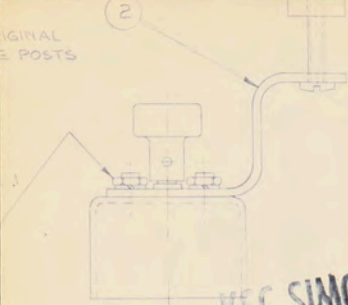
A

NOTE:
1. BREAK SHARP EDGES.
2. REMOVE ALL BURRS.



KSC SIMCOM

ORIGINAL
E POSTS



KSC SIMCOM
LIBRARY

MASTER COPY

126520
A

504

ITEM	PART NO	REQ	DESCRIPTION
6	COML 4	4	NUT-HEX 4-40NC2 ST. STL 3/16 ACROSS FLATS
5	COML 4	4	LOCK WASHER-SPLIT #4 ST. STL
4	COML 2	2	SCREW BIND HD. 4-40NC3 x 5/8 ST. STL.
3	126522	1	CLAMP
2	126521	1	BRACKET
1	COML 1	1	CONNECTOR PLUG 25-30 PS-KHC CONTINENTAL

PARTS LIST



KSC SIMCOM
LIBRARY

MASTER COPY

504

4	126542	1	NAME
3	COML	A/R	CEME
2	126517	1	MUFF
1	126518	1	COVE

MATERIAL _____
FINISH _____

DRAWN PE 7-20-65 APPROVED _____
CHECKED LR 7-23-65 RELEASED _____
PROJ ENG LR 7-23-65 APPROX _____

COVER ASSY, MUFF

The Fall 2000 Space Memorabilia Auction - October 28 & 29, 2000

Lot 395
APOLLO PROGRAM **
1965, Original NASA Blueprints

Superior Galleries - Beverly Hills, CA 90212 - (310) 203-9855 - (800) 421-4754

- ALBUM
- ENVELOPE/FOLDER
- FLAT/FRAMED
- LARGE BOX
- SMALL BOX
- HELMET
- MODEL
- SPACESUIT
- TUBE
- OTHER

SUPERIOR STAMP & COIN

9478 W. OLYMPIC BOULEVARD • BEVERLY HILLS, CA 90212-4299
TEL 310-203-9855 TOLL FREE 800-421-0754 FAX 310-203-8037



A 126522

NOTE:
1. BREAK SHARP EDGES.
2. REMOVE ALL BURRS.

MASTER COPY

KSC SIMCOM
LIBRARY

504

ITEM	DWG. NO	REQ
3	126520	1

ALUMINUM 2024-T3
CLEAR ANODIZE

APPROVED	RELEASED	APPROX SCALE	NEXT ASSEMBLY
7-20-65	7-23-65	1/1	

DWG. SIZE
A 126522

USED ON 58364

FARRAND OPTICAL CO., INC.
BRONX BLVD & E 238TH ST.
NEW YORK 70 N.Y.

UNLESS OTHERWISE SPECIFIED
FOLLOWING TOLERANCES APPLY
FRACTIONS DECIMALS ANGLES
FRACTIONS DECIMALS ANGLES

LET. NO.	CHANGES	DATE	C.K.D.
B	ADDED ITEM 4	10-2-65	1/63
A	ISSUED	7-26-65	J.G.H.



PIONEER II ROCKET
U. S. AIR FORCE'S THIRD
AND FINAL LUNAR PROBE



Pioneer IV
Goes Into
Orbit Around
The Sun

George Goldsey,
Canton, Texas



PIONEER
Moon Rocket
Climbs 79,120 Miles
Into Space

George Goldsey
Canton, Texas



SUN ROCKET

Pioneer V

The Sun Rocket

Today, March 11, 1960, the United States successfully fired the Thor-Able giant rocket combination into space on an elliptical orbit that will bring it within 74,700,000 miles of the Sun about 5 months from now. It will intercept the orbit of Venus at about 63,000,000 miles of the Sun.



CLYDE J. SARZIN
WESTBURY, LONG ISLAND
NEW YORK, U. S. A.

EXPLORER ~~VANGUARD~~ III SATELLITE

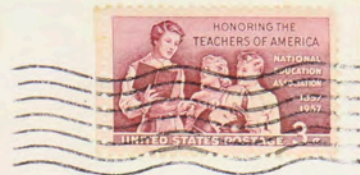
LAUNCHED FROM CAPE CANAVERAL, FLA.

MARCH 26, 1958, AT 12:38 P.M. (EST)



Baby Moon Most Efficient--EISENHOWER SAYS

©OLD CRAFT CACHETS



George Goldey
Canton, Texas



PATRICK AIR FORCE BASE FLA
JUL 26
10-AM
58



George Golden
Canton, Texas



FORT CANAVERAL
FEB
17
A.M.
1959
FLA.



George Golden
Canton, Texas

Association of Space Explorers

Ассоциация участников космических полетов

"SPACE HAS NO BOUNDARIES"



Handwritten signatures: *Albin Fabian*, *Albin Fabian*, *Albin Fabian*, *Albin Fabian*, *Albin Fabian*

7TH PLANETARY CONGRESS
BERLIN - OCTOBER 1991



Association of Space Explorers

Ассоциация участников космических полетов

"SPACE HAS NO BOUNDARIES"



Handwritten signatures: *Albin Fabian*, *Albin Fabian*, *Albin Fabian*, *Albin Fabian*

7TH PLANETARY CONGRESS
BERLIN - OCTOBER 1991



Association of Space Explorers
Ассоциация участников космических полетов

"SPACE HAS NO BOUNDARIES"



Michael Smith
Frank Borman *Frank*
Gene Cernan
Van der Berg *Bob*
Chun Wang *Don Williams*



7TH PLANETARY CONGRESS
BERLIN - OCTOBER 1991



Association of Space Explorers
Ассоциация участников космических полетов

"SPACE HAS NO BOUNDARIES"



Frank Borman *Frank*
Gene Cernan
Van der Berg *Bob*
Chun Wang *Don Williams*



7TH PLANETARY CONGRESS
BERLIN - OCTOBER 1991



Association of Space Explorers
Ассоциация участников космических полетов

"SPACE HAS NO BOUNDARIES"



Handwritten signatures:
N. J. ...
Joe Allen
D. ...
S. ...
D. ...
D. ...



7TH PLANETARY CONGRESS
BERLIN - OCTOBER 1991

Association of Space Explorers
Ассоциация участников космических полетов

"SPACE HAS NO BOUNDARIES"

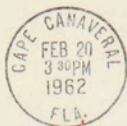


Handwritten signatures:
W. ...
John Barto
Charles ...
Bill Nelson
Don ...



7TH PLANETARY CONGRESS
BERLIN - OCTOBER 1991

Charles A. Bassett II



FIRST DAY OF ISSUE

SPACE SHUTTLE MISSION #32

Daniel C. Brandenstein

DANIEL C. BRANDENSTEIN, COMMANDER



Jim Wetherbee

JAMES D. WETHERBEE, PILOT

Bonnie J. Dunbar G. David Low

BONNIE J. DUNBAR

G. DAVID LOW

MARSHA S. IVINS

MISSION SPECIALISTS

Marsha S. Ivins



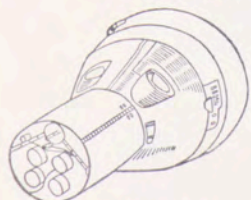
MASTER
T-AGM 14 USNS ROSE KNOT
FPO NEW YORK 09501



GEMINI

USNS ROSE KNOT (T-ACM-14)

ARMSTRONG-SCOTT 16 MAR 1966



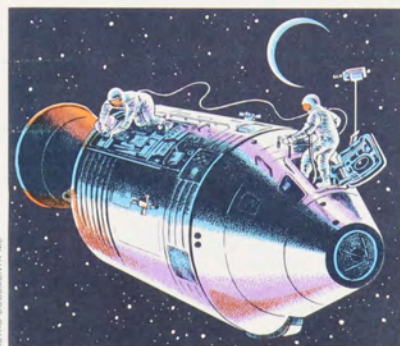
TWO MAN SPACECRAFT

GT-8

Neil

Dave Scott

ROBERT J. BOUDWIN
1119 Harker Ave.
Woodbury, N. J.



ASTRO DOCUMENTA 4B

TRANSEARTH COAST EVA

APOLLO 17



Jim Lewis
Ed Worken



Dave Scott

POST CARD



Neil

APOLLO 11 LAUNCH

COMMANDER
Neil A. Armstrong

COMMAND MODULE
PILOT
Michael Collins

LUNAR MODULE
PILOT
Edwin E. Aldrin, Jr.

*Rocco W. Petrone
APOLLO Launch Director*

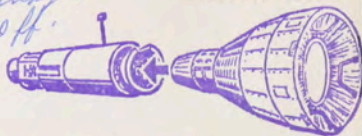
NASA
MANNED SPACECRAFT CENTER



GEMINI-TITAN 12
LOVELL & ALDRIN



*Best wishes
from
Walter J. Kapryson
Resident Manager
Gemini Prog. Off.
@
KSC*



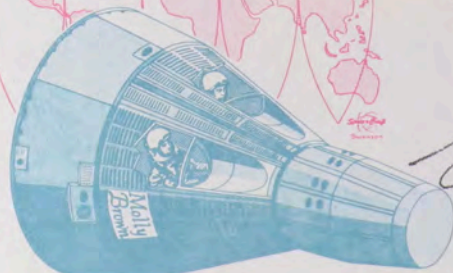
M. A. EDINGER
1143 W. ALLEGHENY AVE.
PHILADELPHIA, PA. 19133

M. A. Edinger

GEMINI

First
U.S.

SPACE
TWIN'S



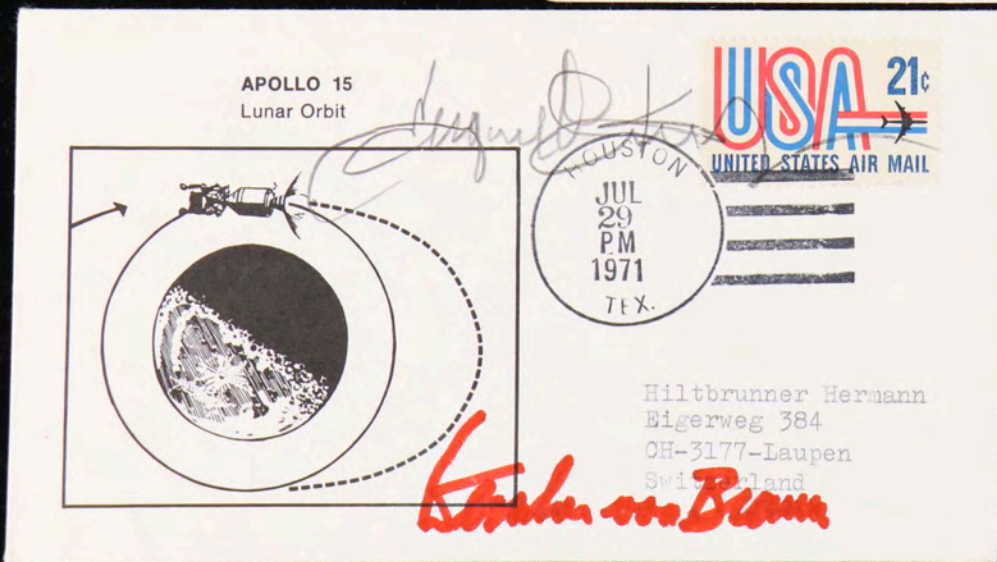
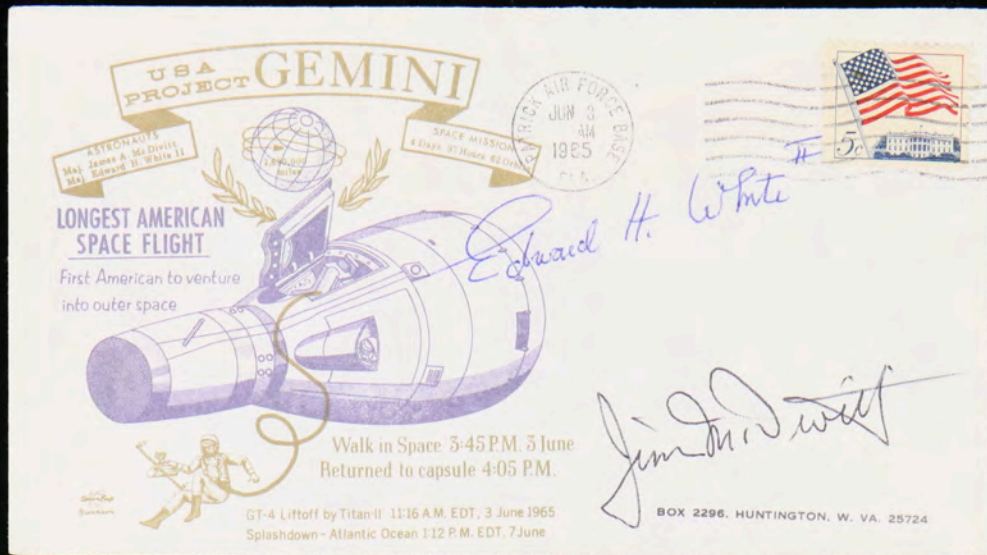
Edward H. White

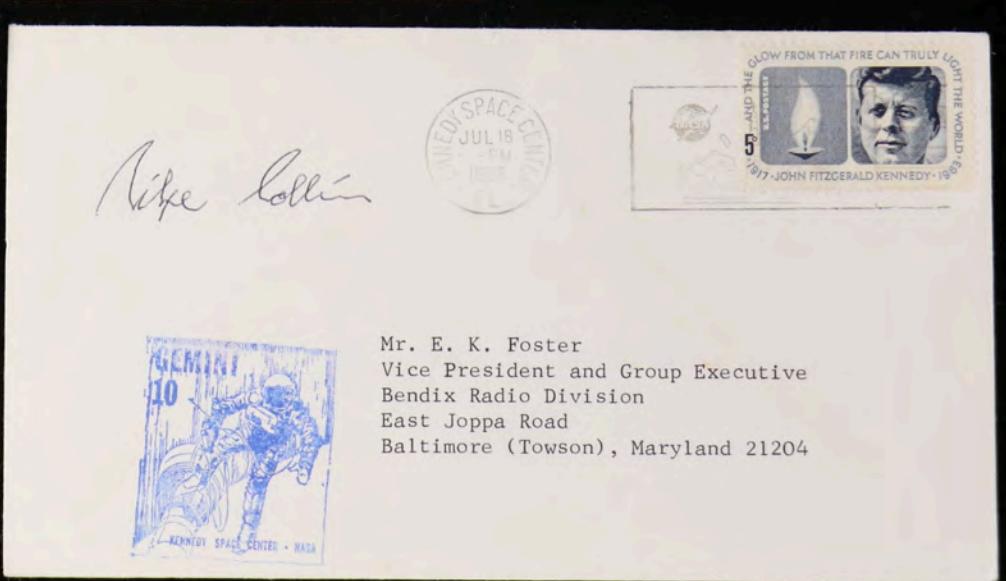
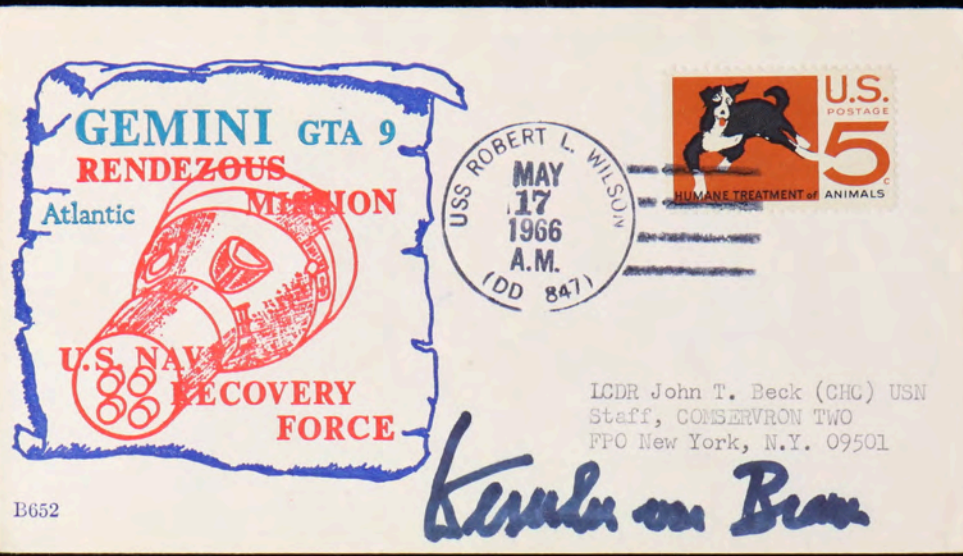
Command Pilot
Major Virgil I. Grissom

Pilot
Lt. Col. John W. Young

Three-orbit flight will pave
way for longer missions

BOX 2296, HUNTINGTON, W. VA. 25724





APOLLO-16



ASTRONAUT
CHARLES DUKE, JR.

ASTRONAUT
JOHN YOUNG



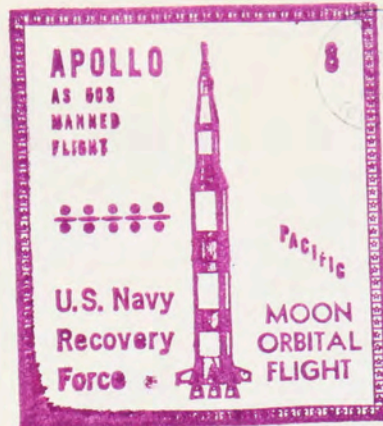
ASTRONAUT
THOMAS K. MATTINGLY II

JOHN F. KENNEDY SPACE CENTER FLORIDA



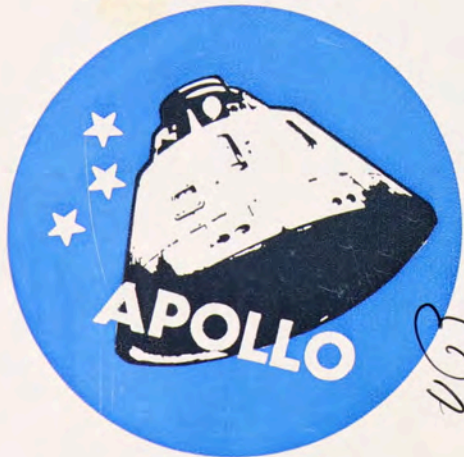
CORREIO AÉREO PAR AVION CORREIO AÉREO
Via PAN AMERICAN WORLD AIRWAYS
VIA AIR MAIL MIT LUFTPOST VIA AEREA

John Young
Tom Mattingly
Charlie Duke
Rocco A. Petrone



Mike Bur
Bill Anderson

MONDFLUG APOLLO 14



SONDERPOSTKARTE

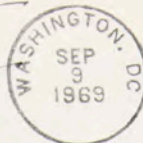
W. W. W. W.



A
P
O
L
L
O
11



FDC Washington D.C. 9. September 1969
mit Wiedergabe des Mondlandestampfs — 20. Juli 1969 —
den Armstrong und Aldrin auf dem Mondbrief anbrechten.



UNITED STATES

UNITED STATES



Isaac Asimov
a non-artist