



1LB1



1LB6



1LB7



1LB9

360-



1LB8a



1LB8



1LB2

325-



1LB3

100-

735

BALTIMORE  
EQUITABLE SOCIETY,



FOR  
INSURING FROM LOSS BY FIRE  
Incorporated 1794.

OFFICE,  
No. 19 South Street.

THIS SOCIETY WILL  
Insure Houses and Furniture  
At very cheap rates, for 7 years, on the  
MUTUAL OR BENEFICIAL PLAN,  
Or by the year, for a premium,  
AND GRANT  
CARPENTERS' RISKS,  
On pleasing terms.



*Horatio Devan Esq*  
*Biddle W Madison*

1489a (sent)



375-



725-

300-



750-



400-

2575



15L5



15L6



15L6

525-



Scott #15L12 \$100.00  
\*\*\*COVER FRONT ONLY\*\*\*  
VF - acid tied on cover front to Providence Rhode Island. Blue "Philadelphia, Pa" cds. Scott catalog value - \$200.00 for full cover

200

180-



15L9



15L13



15L14



15L15



15L16



15L18



# The Philatelic Foundation

341 West 38th Street • 5th Floor  
New York, NY 10018

EXPERT COMMITTEE

No. 512013

05/06/2013

We have examined the enclosed item, of which a photograph is attached, and *described by the applicant* as follows:

Country: UNITED STATES OF AMERICA

<u>Cat. No.</u>	<u>Issue</u>	<u>Denom.</u>	<u>Color</u>
40L2	1846	2¢	black on green glazed

Scott's unless otherwise specified.

USED, RED "FREE" IN FRAME CANCEL.

AND WE ARE OF THE OPINION THAT:

IT IS GENUINE, WITH LIGHT SCUFFING AND A DIAGONAL SCRAPE AT TOP. \*\*

\*\*\*\*\*



512013

F 258154

For The Expert Committee  
Chairman

Photocopies of this Certificate are not valid.



62BIE



40 LI Reprints

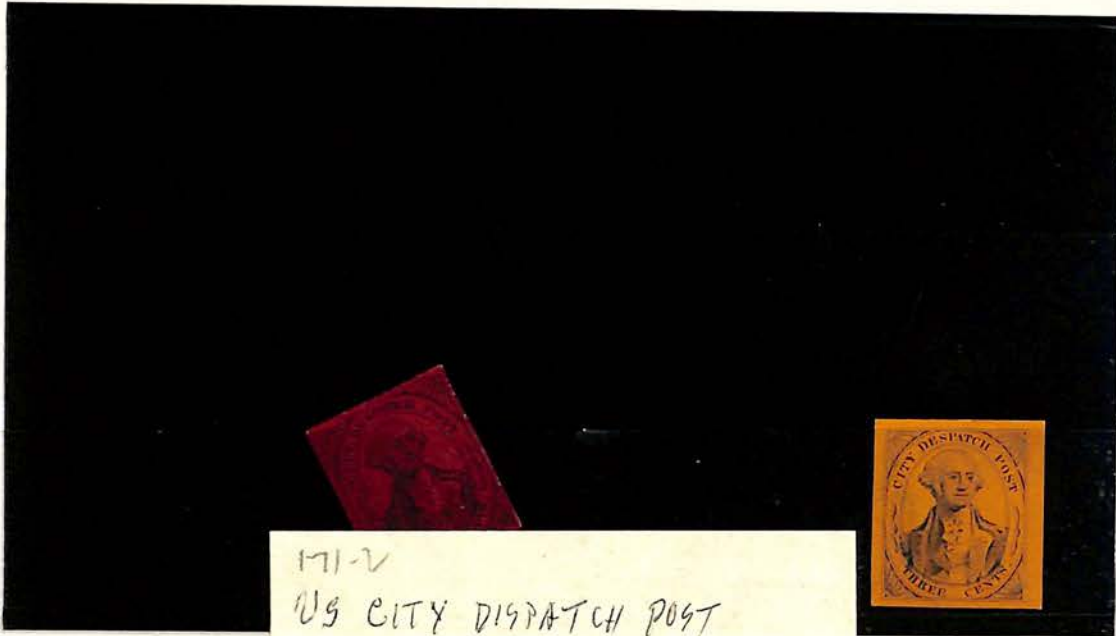


40 L2

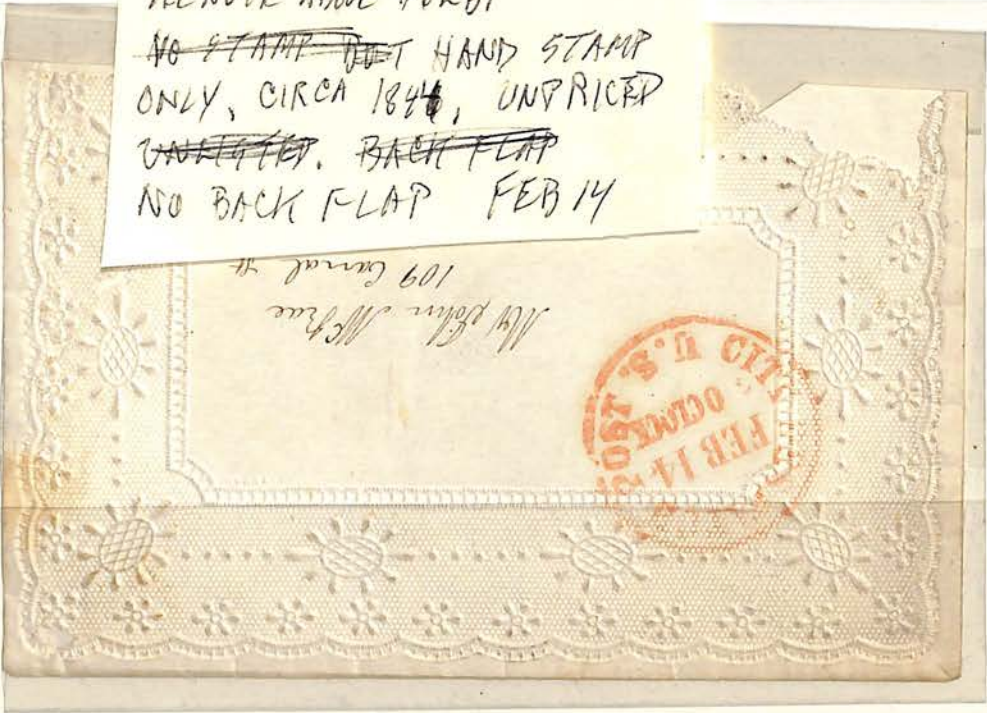


40 L2a





171-2  
 US CITY DISPATCH POST  
 SEE NOTE ABOVE #6LBI  
~~NO STAMP~~ ~~LET~~ HAND STAMP  
 ONLY, CIRCA 1844, UNPRICED  
~~UNPRICED~~. ~~BACK FLAP~~  
 NO BACK FLAP FEB 14





522  
150-

13649

143

312

11463  
65-

522  
350

565





SL1



SL1 Reprints











Forgery



PENNY POST. PAID.



No. 01358401 3/6/2019



Professional Stamp Experts  
PO Box 539309, Henderson, NV 89053-9309



#5LB1 WHARFON'S USPO DISPATCH XF UNUSED  
Cat. Our  
Price ~~\_\_\_\_\_~~ Price 150-



ich



102B



3202

184 R

7562

300-

374 R

754 R

125

7525  
300-