

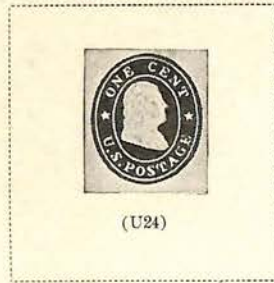
ENVELOPES

1860-61



1 C
BLUE
ON ORANGE

(W22)



1 C
BLUE
ON MANILA

(W25)



6 C
RED
ON WHITE

(U30)

6 C
RED
ON BUFF

(U31)

10 C
GREEN
ON WHITE

(U32)



ENVELOPES

1861



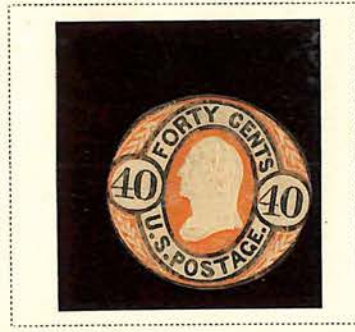
3 C
PINK
ON ORANGE

(U37)



6 C
PINK
ON BUFF

(U39)



1863-64



Die 1
2 C
BLACK ON
DARK MANILA

(W47)



Die 2
2 C
BLACK
ON ORANGE

(U49)

ENVELOPES

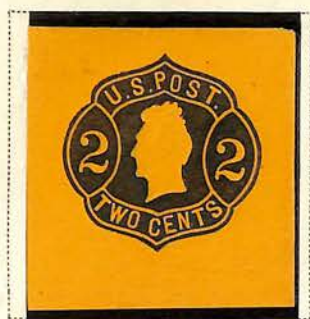
1863-64



Die 3
2 C
BLACK
ON BUFF
(W51)



Die 4
2 C
BLACK
ON BUFF
(W55)

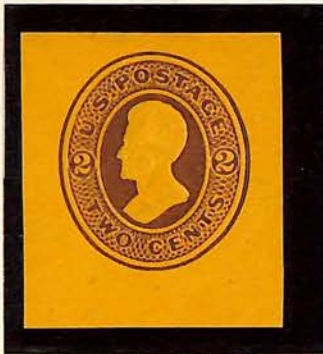
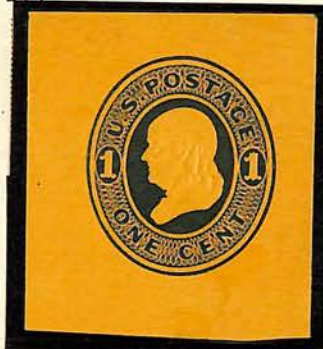


1864-65



ENVELOPES

1865



ENVELOPES

1870-71



(U89)

10 C
OLIVE BLACK
ON AMBER

(U90)

10 C
BROWN
ON WHITE

(U91)

10 C
BROWN
ON AMBER

(U92)



(U93)

12 C
PLUM
ON AMBER

(U94)

12 C
PLUM
ON CREAM

(U95)



15 C
RED ORANGE
ON AMBER

(U97)



24 C
PURPLE
ON AMBER

(U100)

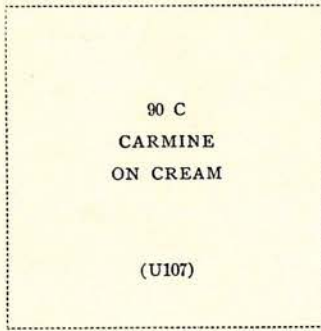
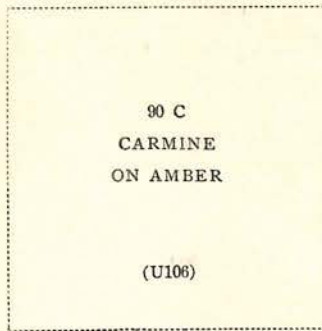
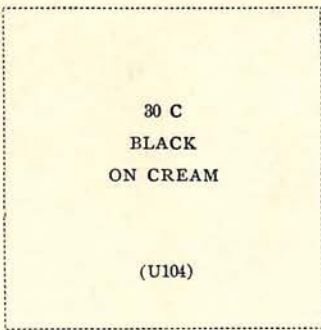
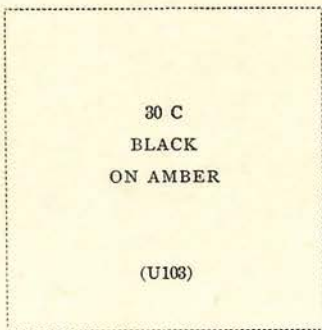
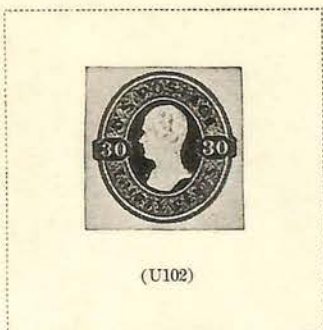


24 C
PURPLE
ON CREAM

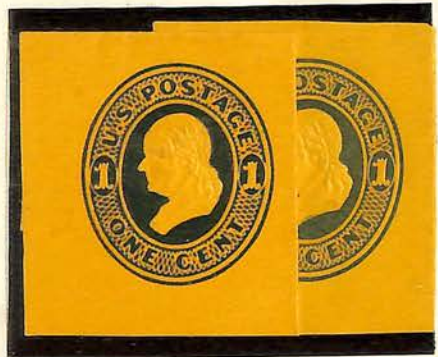
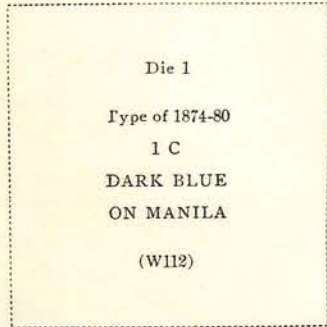
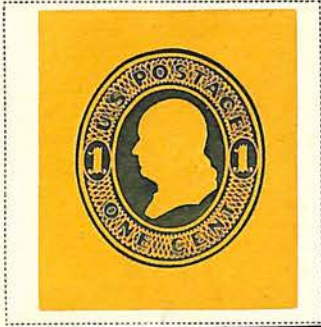
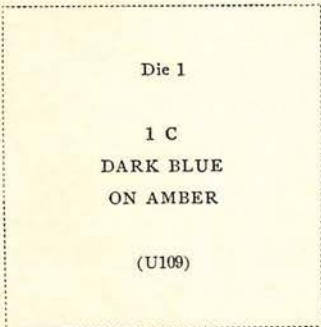
(U101)

ENVELOPES

1870-71



1874-86



ENVELOPES

1874-86



Die 2
1 C
LIGHT BLUE
ON MANILA
(W120)



Die 1
2 C
BROWN
ON AMBER
(U122)

Die 1
2 C
BROWN
ON CREAM
(U123)

Die 1
2 C
BROWN
ON ORANGE
(U124)

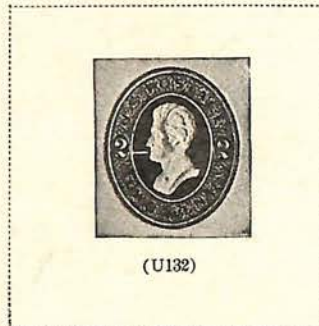
Die 1
2 C
BROWN
ON MANILA
(W125)

Die 1
2 C
VERMILION
ON MANILA
(U126)



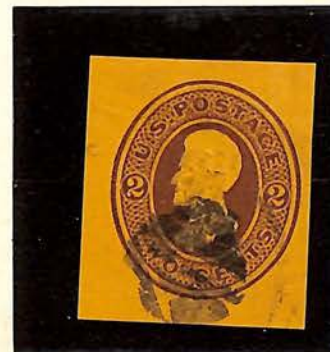
Die 2
2 C
BROWN
ON AMBER
(U127)

Die 2
2 C
BROWN
ON CREAM
(U128)



Die 3
2 C
BROWN
ON AMBER
(U129)

Die 3
2 C
BROWN
ON CREAM
(U130)



ENVELOPES

1874-86

Die 4
2 C
BROWN
ON MANILA
(W137)



Die 4
2 C
VERMILION
ON MANILA
(W138)



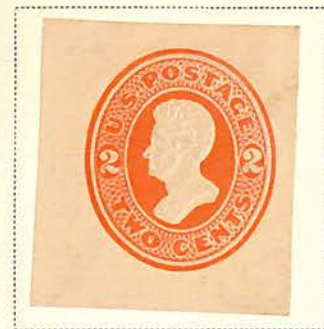
Die 5
2 C
BROWN
ON AMBER
(U140)



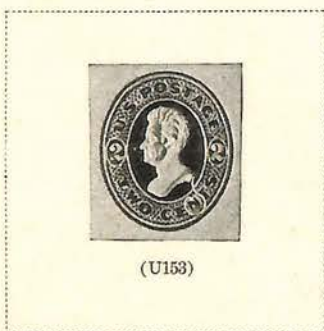
Die 5
2 C
VERMILION
ON ORANGE
(U145)



Die 5
2 C
VERMILION
ON BLUE
(U146)



Die 6
2 C
VERMILION
ON AMBER
(U150)



(U153)



ENVELOPES

1874-86



Die 4
2 C
VERMILION
ON ORANGE

(U137C)

Die 2
5 C
BLUE
ON CREAM

(U178A)

ENVELOPES

1874-86



(U156)

Die 8
2 C
VERMILION
ON AMBER

(U157)

Die 8
2 C
VERMILION
ON MANILA

(W158)



Die 1
3 C
GREEN
ON AMBER

(U160)



Die 1
3 C
GREEN
ON BLUE

(U162)



167



Die 3
3 C
GREEN
ON AMBER

(U169)

Die 3
3 C
GREEN
ON BLUE

(U170)

Die 3
3 C
GREEN
ON FAWN

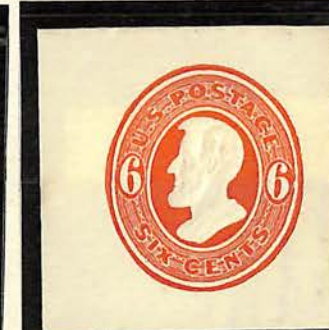
(U171)

ENVELOPES

1874-86



Die 1
5 C
BLUE
ON FAWN
(U170)



2 C
(U185)

6 C
VERMILION
ON AMBER
(U186)



Die 1
10 C
BROWN
ON AMBER
(U188)



ENVELOPES

1874-86



(U195)

12 C
PLUM
ON AMBER

(U196)

12 C
PLUM
ON CREAM

(U197)



15 C
ORANGE
ON AMBER

(U199)

15 C
ORANGE
ON CREAM

(U200)



(U201)

24 C
PURPLE
ON AMBER

(U202)

24 C
PURPLE
ON CREAM

(U203)



30 C
BLACK
ON CREAM

(U206)

30 C
BLACK ON
ORIENTAL BUFF

(U207)

ENVELOPES

1874-86

Same
30 C
BLACK
ON BLUE

(U208)

30 C
BLACK
ON MANILA

(U209)

30 C
BLACK ON
AMBER MANILA

(U210)



90 C
CARMINE
ON AMBER

(U212)

90 C
CARMINE
ON CREAM

(U213)

90 C
CARMINE ON
ORIENTAL BUFF

(U214)

90 C
CARMINE
ON BLUE

(U215)

90 C
CARMINE
ON MANILA

(U216)

90 C
CARMINE ON
AMBER MANILA

(U217)

1876





U 218



U 178A

ENVELOPES

1882-86



5 C
BROWN ON
ORIENTAL BUFF

(U224)

5 C
BROWN
ON BLUE

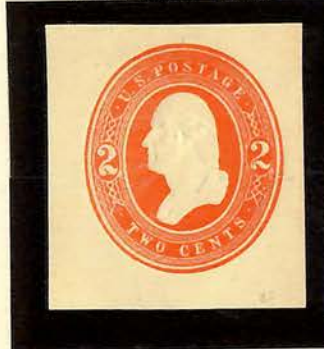
(U225)



October, 1883



November, 1883



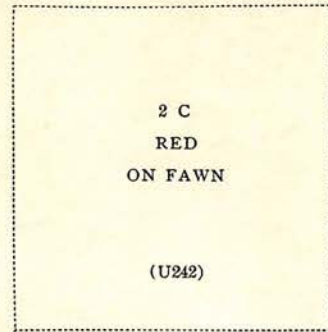
ENVELOPES

June 1884



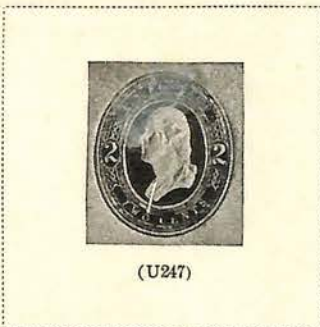
2 C
RED
ON AMBER

(U241)



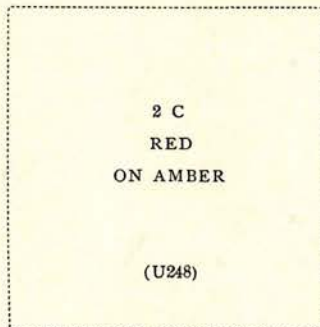
2 C
RED
ON FAWN

(U242)

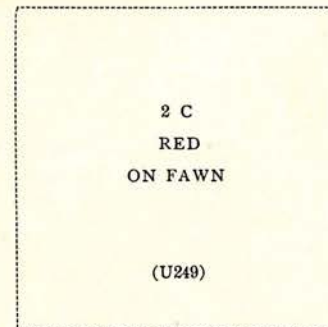


2 C
RED
ON AMBER

(U247)



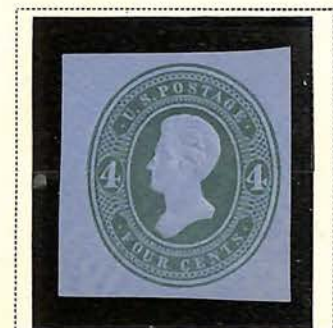
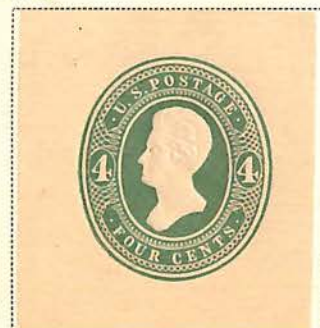
(U248)



2 C
RED
ON FAWN

(U249)

1883-86



ENVELOPES

1883-86

Die 1

4 C
GREEN
ON MANILA

(U254)



May 1884



2 C
BROWN
ON MANILA

(W264)

June 1884



ENVELOPE

June,

2 C
BROWN
ON FAWN

(U268)



2 C
BROWN
ON AMBER

(U271)



Same design
Round "O" in "TWO"

2 C
BROWN
ON WHITE

(U273)

2 C
BROWN
ON AMBER

(U274)

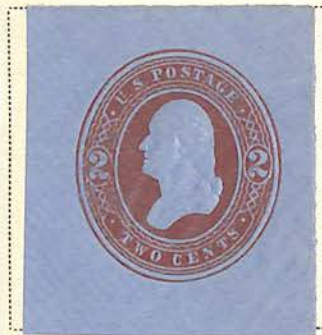
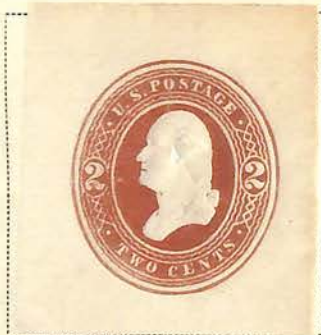
2 C
BROWN
ON BLUE

(U275)

2 C
BROWN
ON FAWN

(U276)

1884-86



ENVELOPES

1884-86

Die 1
2 C
RED
ON WHITE
(U285)

Die 1
2 C
RED
ON BLUE
(U286)

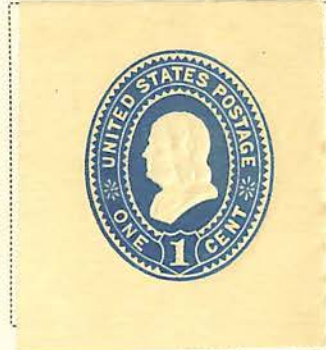
Die 1
2 C
RED
ON MANILA
(W287)



Die 2
2 C
BROWN
ON BLUE
(U290)



1887-94



1 C
BLUE ON
ORIENTAL BUFF
(U298)

1 C
BLUE
ON BLUE
(U299)



ENVELOPES

LETTER SHEET

1886

720



22⁵⁰

ENVELOPES

LETTER SHEET

1886



ENVELOPES

1887-94



Die 1
2 C
GREEN
ON AMBER
(U306)



Die 1
2 C
GREEN
ON BLUE
(U308)

Die 1
2 C
GREEN
ON MANILA
(U309)

Die 1
2 C
GREEN ON
AMBER MANILA
(U310)



ENVELOPES

1887-94



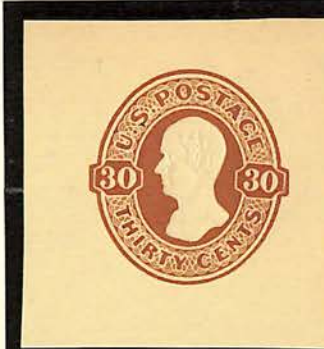
327



Type of Issue of 1874-86

30 C
RED BROWN
ON WHITE

(U336)



30 C
RED BROWN ON
ORIENTAL BUFF

(U338)

30 C
RED BROWN
ON BLUE

(U339)

30 C
RED BROWN
ON MANILA

(U340)

30 C
RED BROWN ON
AMBER MANILA

(U341)

ENVELOPES

1897-94



90 C
PURPLE ON
ORIENTAL BUFF

(U344)

90 C
PURPLE
ON BLUE

(U345)

90 C
PURPLE
ON MANILA

(U346)

90 C
PURPLE ON
AMBER MANILA

(U347)

Columbian Exposition Issue

1893



(U349)



ENVELOPES

1899



Die 1
2 C
CARMINE
ON BLUE
(U361)



ENVELOPES

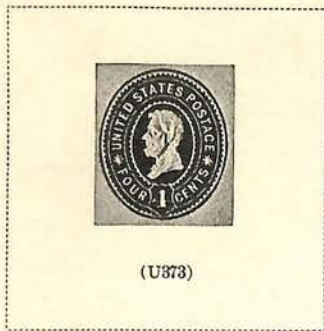
1899



Die 1

4 C
BROWN
ON AMBER

(U872)



1903



(U879)



(U881)



Bld

ENVELOPES

1903-04



(U886)



(U887)



(U888)



(U894)



4
Missing tooth

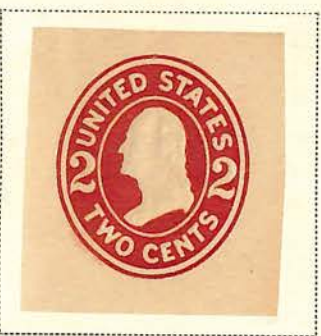
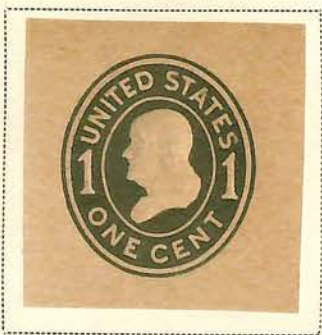


1250
Spoken for TWO



ENVELOPES

1907-16



417 + 417A

ENVELOPES

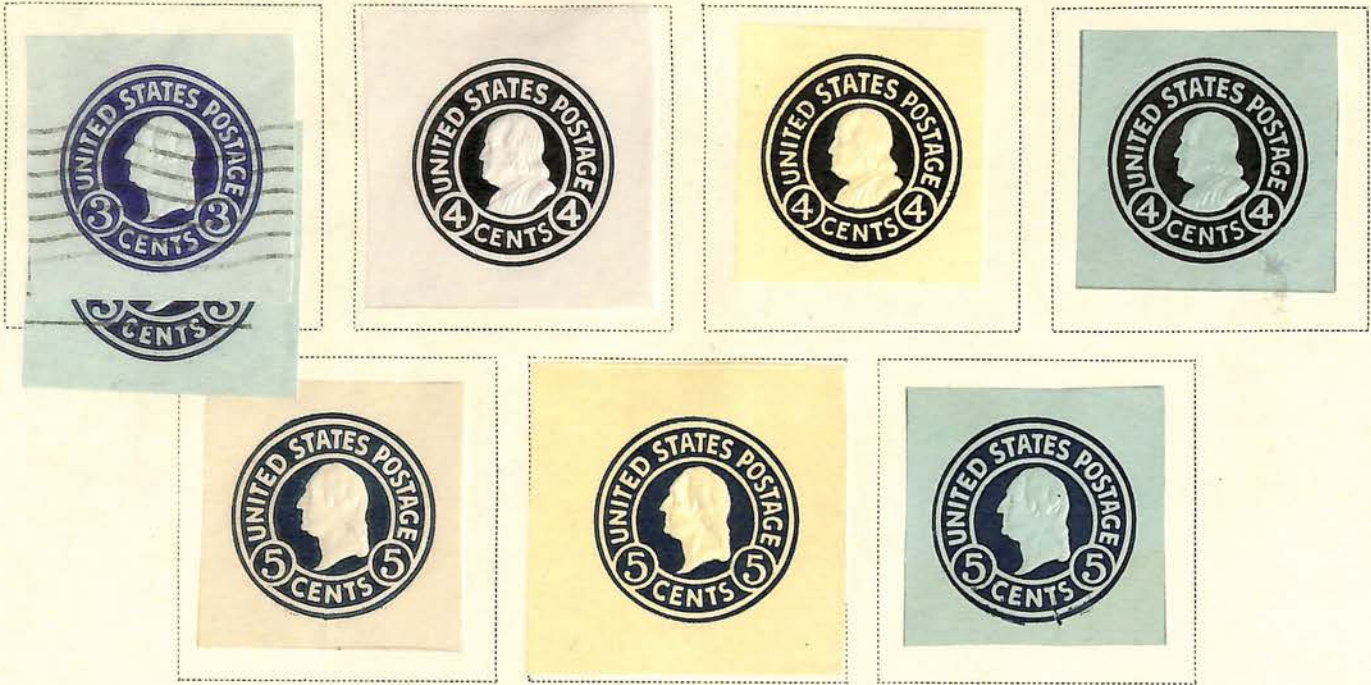
1916-21



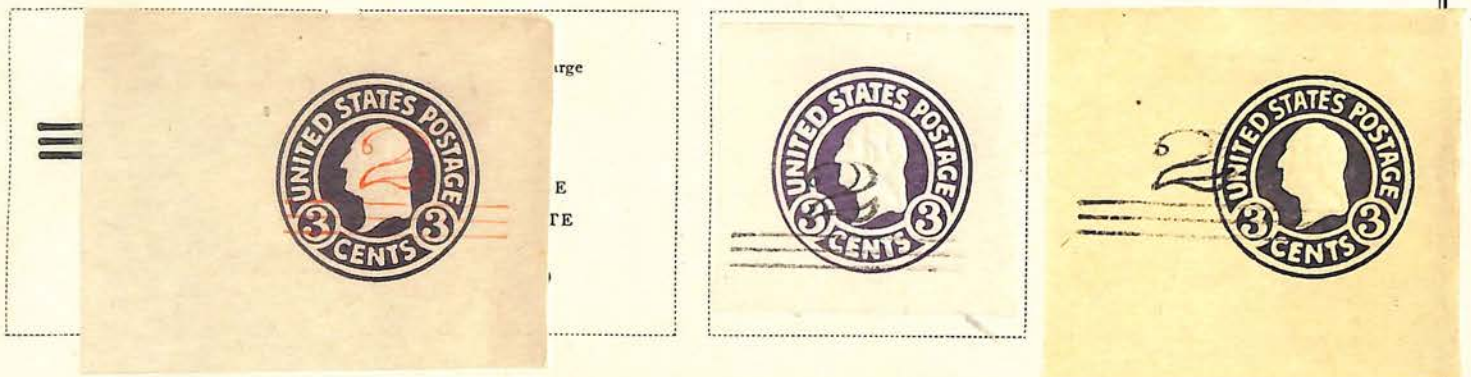


ENVELOPES

1916-21



1920-21



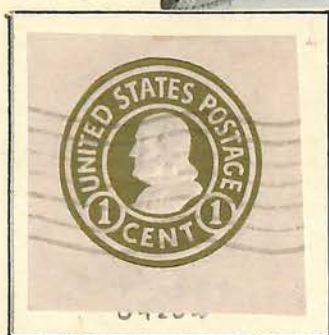
1916-28



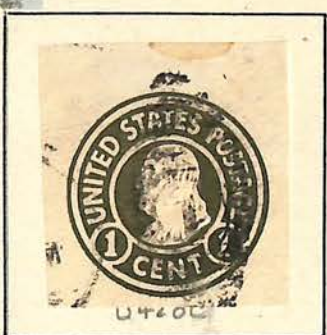
CR



U420



U420



U420



U421



U421

1/2 Green
Amber

Die-2
U421a

1/2 Green
Amber

Die-3
U421b

1/2 Green
Amber

Die-4
U421c



R.)

U421d

1/2 Green
OR-Buff

Die-1
U422



U509



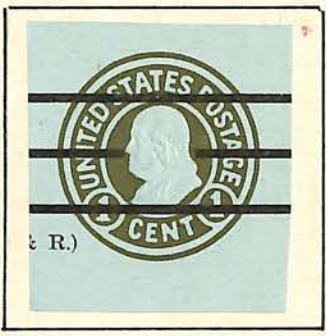
U423a



U423a



U423a



R.)



reet

1/2 Green
Glazed
Brown (20)

Die-1
U426

1/2 Green
Un-glazed
Marble
Brown (20)

U428



U421



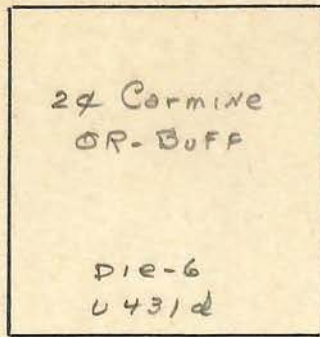
427

1916-28



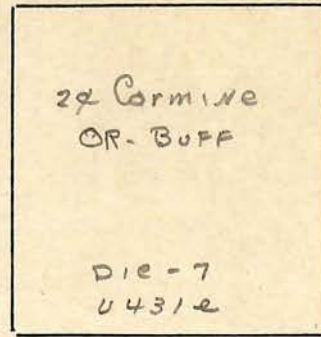
2¢ Carmine
OR-BUFF

Die-5
U431c



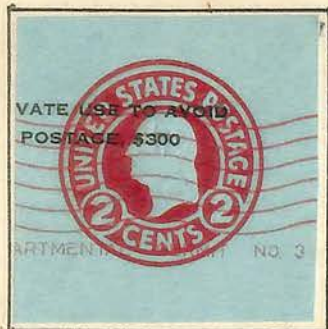
2¢ Carmine
OR-BUFF

Die-6
U431d



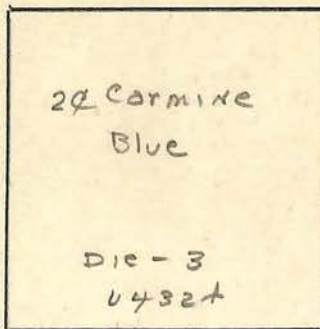
2¢ Carmine
OR-BUFF

Die-7
U431e



2¢ Carmine
Blue

Die-2
U432a



2¢ Carmine
Blue

Die-3
U432b



2¢ Carmine
Blue

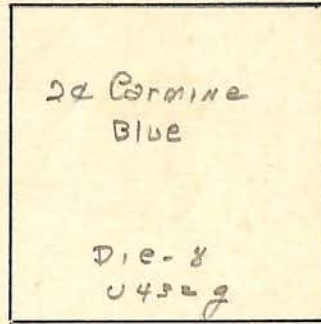
Die-5
U432d



VATE USE TO AVOID
POSTAGE \$300



UNITED STATES POSTAGE
2 CENTS



2¢ Carmine
Blue

Die-8
U432g



2¢ Carmine
Manila

Die-7
U432A



UNITED STATES POSTAGE
3 CENTS



UNITED STATES POSTAGE
3 CENTS



UNITED STATES POSTAGE
3 CENTS

1916-28



2¢ Carmine
White
Rejected Die

Die-3
U429+



2¢ Green
White
ERROR

Die-1
U429i



2¢ Carmine
OR- Buff

Die-1
U431

2¢ Carmine
OR- Buff

Die-2
U431a

WASHINGTON, D.C.
SEP 14 6:30 PM.
1938

of the
Americana

SOUTH BEND

SEP 16 1938

LATHS WORKS
Beal

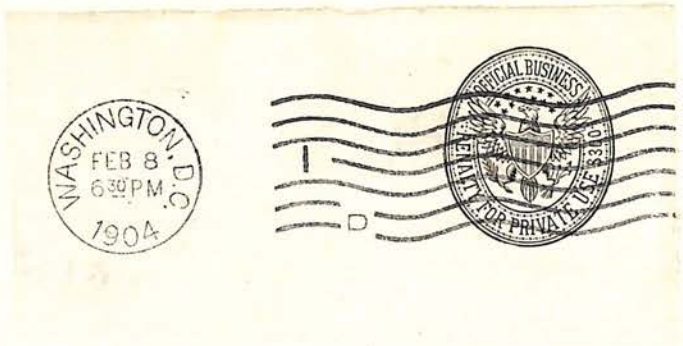
DIPLOMATIC MAIL
BUY U. S. SAVINGS BONDS
FRANCO FREE
ASK YOUR POSTMASTER
of the
AMERICAS & SPAIN

Naval Mission to Peru
American Embassy
Lima, Peru

1943

ST. JOSEPH, MO.
STARTS
SECOND CENTURY
JULY 26, 1943

1843



ENVELOPES

1920-21



Surcharged like cut

2 C
On 1 C
GREEN
ON WHITE

(U451A)



On 1 C
GREEN
ON WHITE

(U452)

On Issue of 1907-16

2 C
On 2 C
CARMINE
ON WHITE

(U453)

2 C
On 2 C
CARMINE
ON BLUE

(U453B)

2 C
On 2 C
CARMINE ON
ORIENTAL BUFF

(U453C)

On Issue of 1916-21

2 C
On 2 C
CARMINE
ON WHITE

(U454)

2 C
On 2 C
CARMINE
ON AMBER

(U455)



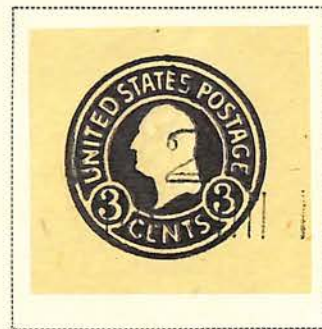
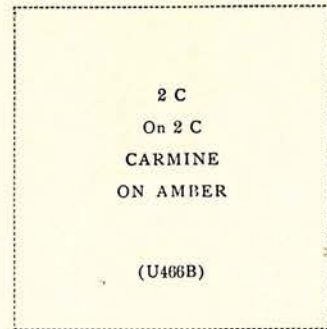
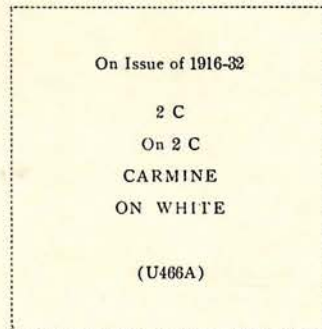
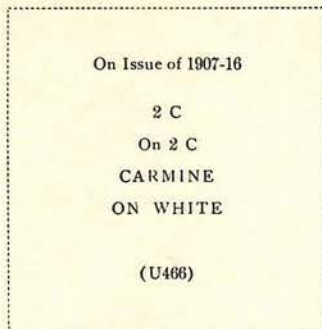
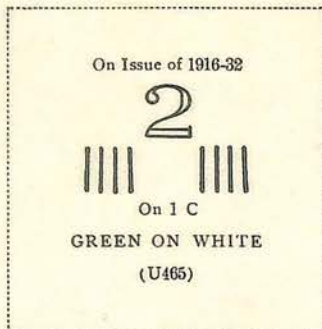
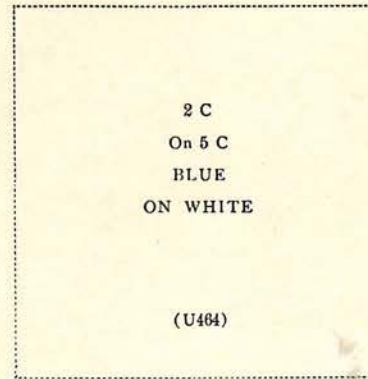
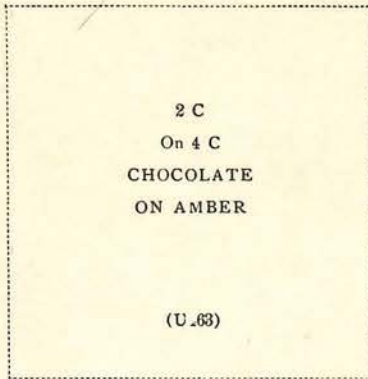
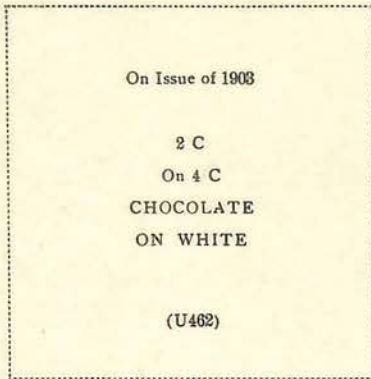
2 C
On 2 C
CARMINE
ON BLUE

(U457)



ENVELOPES

1920-21



ENVELOPES

1920-21



2 C
On 1 C on 3 C
DARK VIOLET
ON WHITE

(U474)

2 C
On 1 C on 3 C
DARK VIOLET
ON AMBER

(U475)

2

On 3 C
DARK VIOLET
ON AMBER

(U476)

2
On 3 C
DARK VIOLET
ON WHITE

(U477)

2 C
On 3 C
DARK VIOLET
ON AMBER

(U478)

Black Surcharge
2
On 3 C
DARK VIOLET
ON WHITE

(U479)

Violet Surcharge
2 C
On 3 C
DARK VIOLET
ON WHITE

(U480)

ENVELOPES

1925



On Issue of 1887
1 1/2
 ||| |||
 On 2 C
 GREEN
 ON WHITE
 (U486)

1 1/4 C
 On 2 C
 GREEN
 ON AMBER
 (U487)

Same
 On Issue of 1899
 1 1/2 C
 On 1 C
 GREEN
 ON WHITE
 (U488)

1 1/4 C
 On 1 C
 GREEN
 ON AMBER
 (U489)



1 1/4 C
 On 1 C
 GREEN ON
 ORIENTAL BUFF
 (U492)

1 1/4 C
 On 1 C
 GREEN
 ON BLUE
 (U493)

1 1/4 C
 On 1 C
 GREEN
 ON MANILA
 (U494)

ENVELOPES

1925



1 1/2 C
On 1 C
GREEN
ON BROWN
(Glazed)
(U501)

1 1/2 C
On 2 C
CARMINE
ON WHITE
(U502)

1 1/2 C
On 2 C
CARMINE ON
ORIENTAL BUFF
(U503)

1 1/2 C
On 2 C
CARMINE
ON BLUE
(U504)

On Issue of 1925
1 1/2 C
On 1 1/2 C
BROWN
ON WHITE
(U505)

1 1/2 C
On 1 1/2 C
BROWN
ON BLUE
(U506)

On Issue of 1887
1 1/2
||| |||
On 1 C
BLUE ON WHITE
(U507)

On Issue of 1899
1 1/2 C
On 1 C
GREEN
ON AMBER
(U508)

ENVELOPES

1925

On Issue of 1903

1½ C
On 1 C
GREEN
ON WHITE

(U508A)



1½ C
On 1 C
GREEN ON
ORIENTAL BUFF

(U509B)



1½ C
On 1 C
GREEN
ON AMBER

(U516)



(U519)

1½ C
On 2 C
CAR INE
ON WHITE

(U520)



ENVELOPES

Sesquicentennial Issue

1926



U-525A

Washington Bicentennial Issue

1932

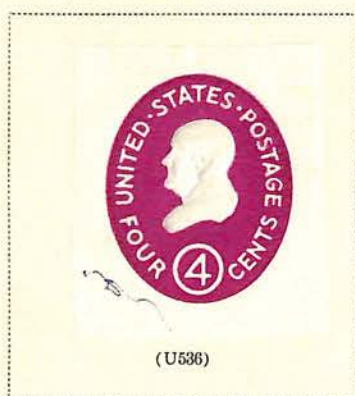
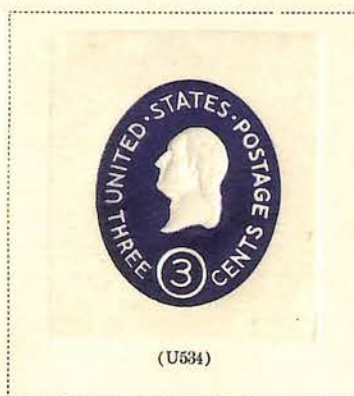
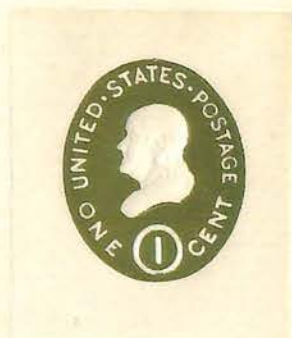
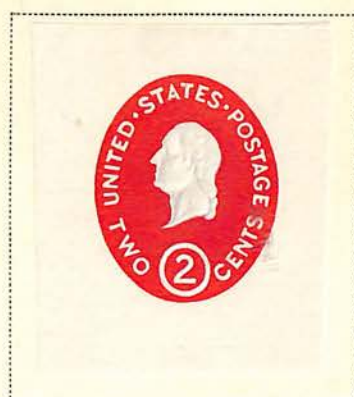
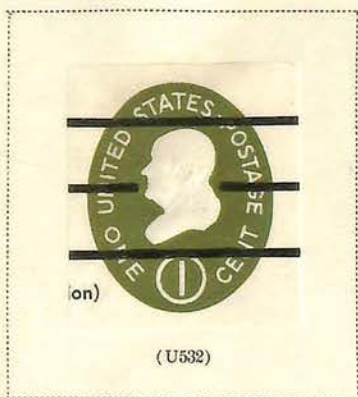


1932

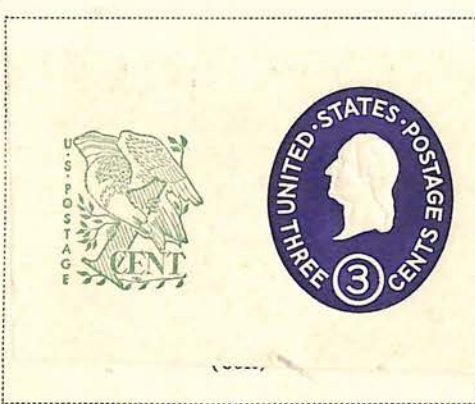


ENVELOPES

1950-58

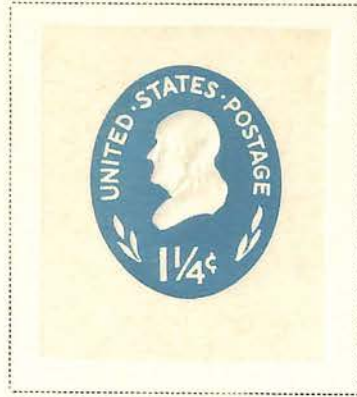


1958



ENVELOPES

1960



Pony Express Centennial Issue



1962



UNITED STATES

ENVELOPES



404



411



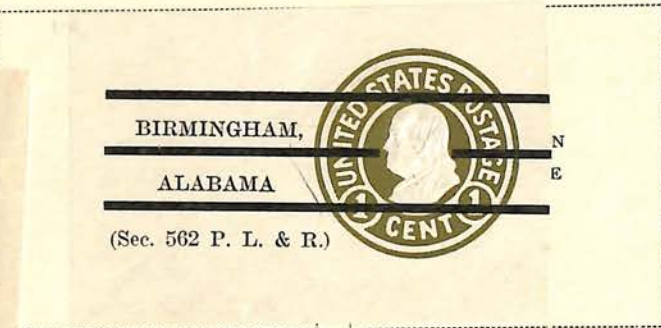
411



429



429



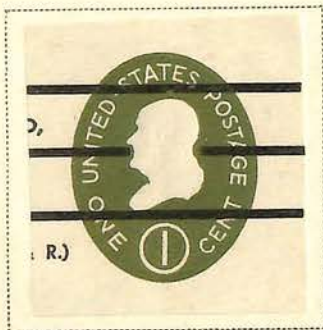
429 D



420 A



429 D



532 B

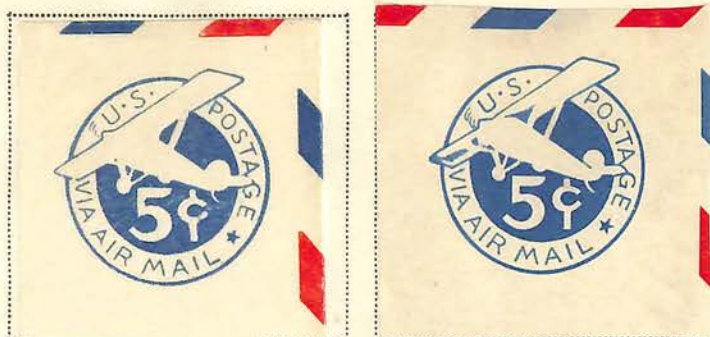


C6

ENVELOPES

AIR POST ENVELOPES

1929



1934



1942



1944



1942



1932



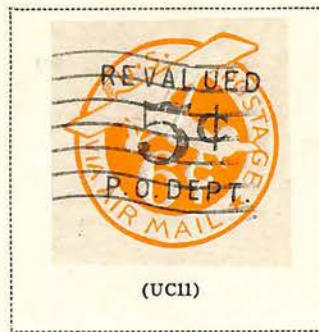
ENVELOPES

AIR POST ENVELOPES

1945



1946



(UC11)



ENVELOPES

AIR POST LETTER SHEET
1947



ENVELOPES

AIR POST ENVELOPES

1946



1947



1950



1951



OFFICIAL ENVELOPES

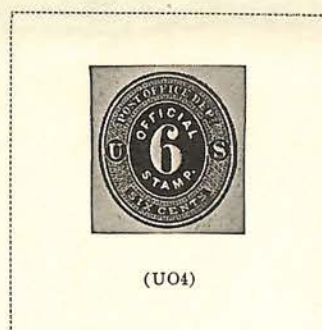
Post Office Department

1873

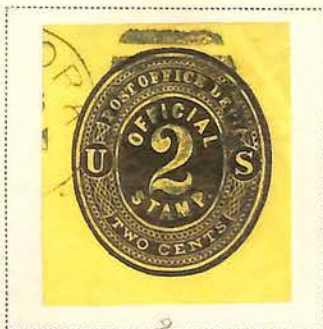


3 C
BLACK
ON WHITE

(U03)



1874-79



2 C
BLACK
ON WHITE

(U06)



3 C
BLACK
ON WHITE

(U08)

3 C
BLACK
ON AMBER

(U09)

3 C
BLACK
ON BLUE

(U010)

3 C
BLUE
ON BLUE

(U011)



6 C
BLACK
ON WHITE

(U013)

Post Office Department.
Office of Third Ass't Postmaster General.
Div. of Stamps, Stamped Envelopes and Postal Cards.
Official Business.



U014

A penalty of \$300 is fixed by law, for using this
Envelope for other than Official Business.

10

UNITED STATES POST OFFICE
HIGHLAND PARK BR., DETROIT, MI. 48203

PENALTY FOR PRIVATE
USE TO AVOID PAYMENT
OF POSTAGE \$300



OFFICIAL BUSINESS
P-186-5-D

POSTAGE DUE _____¢

CONTENTS

FORMS 3579

PUBLICATION

ADDRESS

CITY

STATE

ZIP CODE

OFFICIAL ENVELOPES

Postal Service

1877



BLACK
ON AMBER

(U015)



War Department

1873



(U018)



(U019)



3 C
DARK RED
ON AMBER

(U021)

3 C
DARK RED
ON CREAM

(U022)



6 C
DARK RED
ON CREAM

(U024)



(U025)



(U026)



(U027)



(U028)



(U029)

OFFICIAL ENVELOPES

War Department

1873

Same
1 C
VERMILION
ON WHITE

(U030)



2 C
VERMILION
ON WHITE

(U032)



3 C
VERMILION
ON WHITE

(U034)

3 C
VERMILION
ON AMBER

(U035)



6 C
VERMILION
ON WHITE

(U037)

6 C
VERMILION
ON CREAM

(U038)

10 C
VERMILION
ON WHITE

(U039)

12 C
VERMILION
ON WHITE

(U040)

15 C
VERMILION
ON WHITE

(U041)

24 C
VERMILION
ON WHITE

(U042)

30 C
VERMILION
ON WHITE

(U043)

U051



Chief Signal Officer, U. S. Army,

WASHINGTON,

D. C.

This envelope will only be used by Postmasters for the transmission of Weekly Reports on Form 20.

OFFICIAL ENVELOPES

War Department
1875

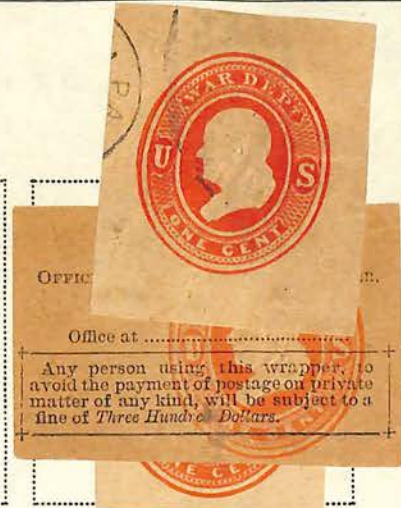


(U044)



1 C
RED
ON ORANGE

(U045A)



(U047)

2 C
RED
ON AMBER

(U048)

2 C
RED
ON ORANGE

(U049)



6 C
RED
ON AMBER

(U057)

6 C
RED
ON CREAM

(U058)

OFFICIAL ENVELOPES

War Department

1875



(U059)

10 C
RED
ON AMBER

(U060)



(U061)

12 C
RED
ON AMBER

(U062)

12 C
RED
ON CREAM

(U063)



(U064)

15 C
RED
ON AMBER

(U065)

15 C
RED
ON CREAM

(U066)



(U067)

30 C
RED
ON AMBER

(U068)

30 C
RED
ON CREAM

(U069)

Postal Savings

1911



1 C
GREEN ON
ORIENTAL BUFF

(U071)



SPRINGFIELD, MASS
FEB 23
5-PM '12

