

BK146  
UNEXPLODED  
BOOKLET  
PLATE NOS  
11, 12 & 15  
CV10500

95

BP5840



vice

BK142  
UNEXPLODED  
BOOKLET  
PLATE # 1-6  
9-10 & diff.  
CV11200

99-

BP5835



vice



vice

BP5836

185-

plate nos.  
73-24, 34  
CV1900

BK  
UN  
B1

BK142  
UNEXPLODED  
BOOKLET  
PLATE NOS 17-19  
CV13500  
130-

BP5838

BK142  
UNEXPLODED  
BOOKLET w/  
PLATE NO. 25  
26

CV 24000

240-

BP5841



Always use:

- complete address
- return address
- correct ZIP Code



Pl # 34  
 50511  
 242  
 "d" press  
 "d" m w e r e s

**Twenty**  
 UNITED STATES  
 POSTAGE STAMPS  
**\$1.00**  
 PRICE



#V212/13

#V249

#V233-4

Lowell S. Newman & Co.  
Auctioneers

1500 Harbor Blvd.  
Weehawken NJ 07087  
Tel:201-223-0100

Lot No.:

Country: USA-EFO<sup>2 1088</sup>

Cat.No.: 2116a

Cat.Value: \_\_\_\_\_



SE

LE

FLDR

ALB

BOX

Buyer 440  
\$ 42

PH

2  
1088  
Lot No.:

PLEASE DO NOT REMOVE LOT FROM MOUNT

**USE ZIP CODE**

**THE  
LAST  
WORD**

**IN MAIL ADDRESSES!**

JAMES DOE  
3800 MAIN AVENUE  
YOUR TOWN, STATE 20018

MR. W. B. JONES  
103 TRENTON PLACE  
HIS TOWN, STATE 79373



#1288B 4 DIT.  
OKLT PANE OF 8  
"ELECTRIC EYE  
MISPERP

7399-

BS9220 2886



E.E. MARKS  
AT BOTTOM



EE DASHES @ BOTTOM

#1395 1/2 3 DIFF BKLT  
 PANE MISPELF 7  
 MISCUT ERROK  
 \$450-

United States

Booklet

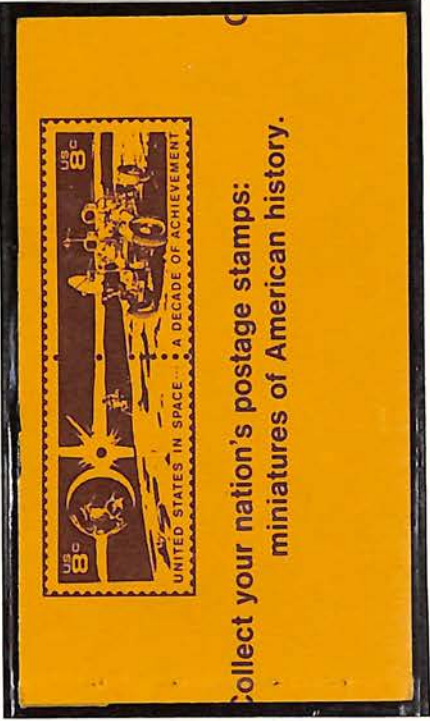
BS9219

Stamps in this book have been gummed with a matte finish adhesive which permits the elimination of the separation tissues.

This book contains 25—8¢ stamps—four on this pane and seven each on three additional panes. Selling price \$2.00.



LAST 2  
 PANES  
 AND  
 BACK COVER  
 INVERTED



**Stamps**  
 Twenty-five 8c Stamps  
 price: \$2.00





# 1510 VAR # DIFF.  
OKLT PANE MISPERF  
# MISCUIT ERRORS

450-



Misperf and Miscut Horizontally



Misperf Vertically

BS9217



Misperf Horizontally



Type II Dashes -  
Misperf and Miscut Horizontally

BK144  
BLACK INK  
STAMINATION  
ON TOP STAMP  
ON 1 PANE

†50<sup>00</sup>



BK144  
MISSING  
COLOR

†99<sup>00</sup>

BL8767

BK145  
MISSING  
COLOR

†99<sup>00</sup>

BL8768

**BL8762**



#BK135  
MISPERF  
ONLY 1PANE  
  
\$99.00

**BL8763**



BK135  
COMPLETE  
BOOKLET  
~~MISPERF~~ MIS-  
PERF  
  
\$55.00

**BL8764**

BK139  
MISPERF  
COMPLETE  
BKLT  
  
\$75.00

**BL8765**

BK127  
MISCUT  
OF ENTIRE  
BOOKLET  
  
\$50.00

Always use complete address including  
return address with ZIP Code

James Doe  
Rural Route 3, Box 261  
Your Town, State 00000

Mr. W. B. Jones  
103 Trenton Place  
His Town, State 00000



**BL8755**

BK 142  
VERTICALLY  
MIS PERF  
COMPLETE  
BKLT  
\$7500

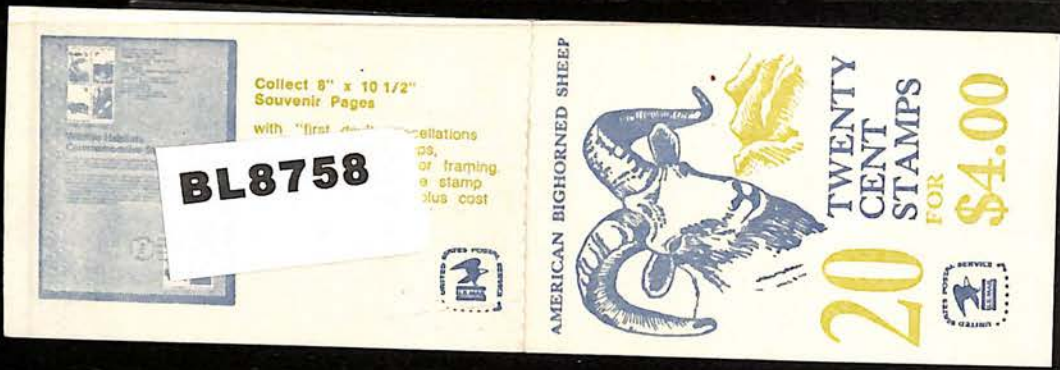


BK 142  
MIS PERF  
COMPLETE  
BOOKLET  
VERTICALLY  
\$7500



BK 142 #15  
MIS PERF  
COMPLETE  
BOOKLET  
\$7500

BK 142  
MAJOR ERROR  
MIS PERF  
HORIZONTALLY  
& MIS CUT  
\$22500



BL8759

BL8760

USA  
22



Frilled Dogwinkle

USA  
22



Reticulated Helmet

USA  
22



New England Neptune

USA  
22



Calico Scallop

USA  
22



Lightning Whelk

USA  
22



Reticulated Helmet

USA  
22



New England Neptune

USA  
22



Calico Scallop

USA  
22



Lightning Whelk

BK147

MISPERF  
1 PANE

\$150<sup>00</sup>

BK147

VIOLET OMITTED  
MAJOR ERROR  
ON 1 PANE

\$475<sup>00</sup>

BL8761

BK 147  
INSUFFICIENT  
MAKING  
ERROR  
BOOKLET  
\$125<sup>00</sup>/EXCH  
4-AVAILABLE

BL9131



BK 147

125

BK 147

BK 147

125

125

BK 141  
MISPERF  
COMPLETE  
BOOKLET  
\$125<sup>00</sup>

**BL9139**

BK 136  
MISPERF  
COMPLETE  
BOOKLET  
99<sup>00</sup>

**BL9140**



**BL9141**

BK 134  
GREEN INKING  
STARVDTU  
ON TOP 2  
STAMPS  
\$199<sup>00</sup>



**BL9142**



BK 134  
GREEN INKING  
STARVATION ON  
TOP 2 ~~BOOK~~  
STAMPS  
\$199<sup>00</sup>

BL9135

BL9136



BK 134  
COMPLETE  
BKLT MISPERF.  
HORIZONTALLY  
  
175<sup>00</sup>

057

BK 134  
COMPLETE  
BKLT MISPERF.  
HORIZONTALLY  
  
175<sup>00</sup>

BL9138

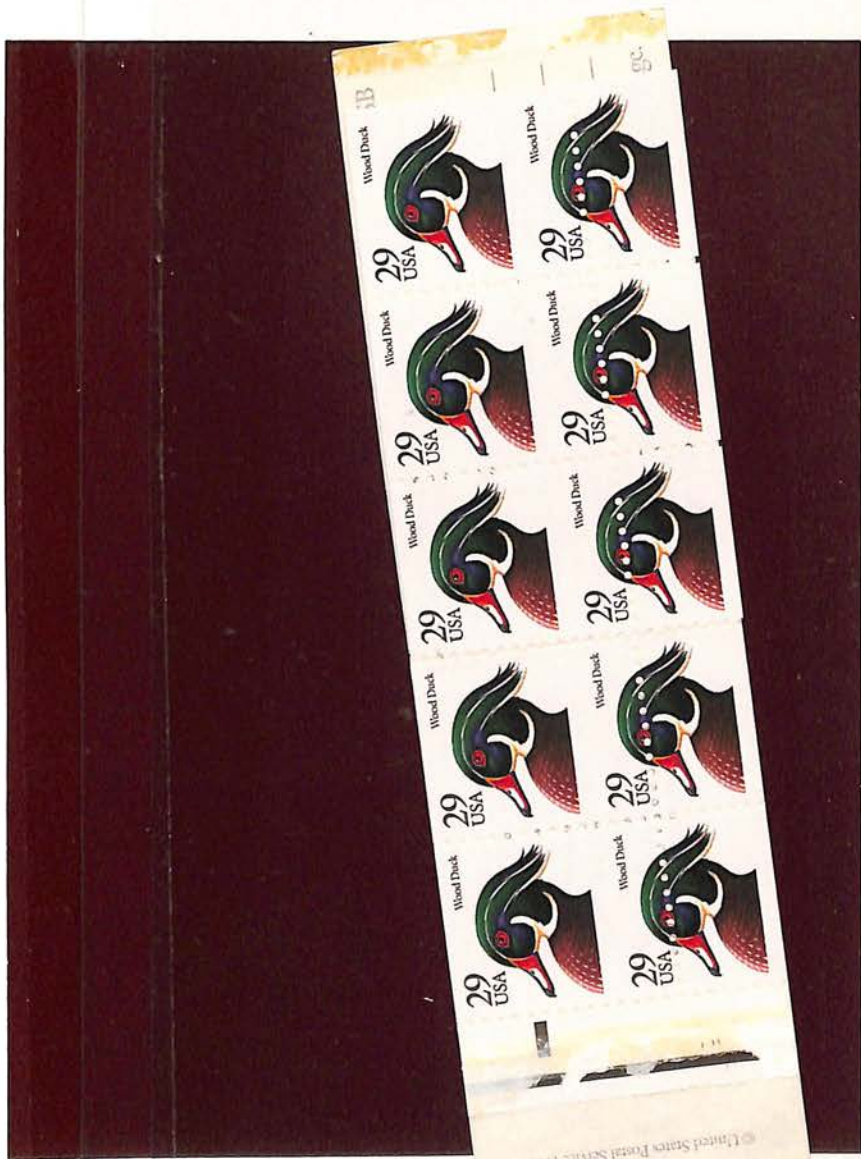
BK 134  
MIS PERF  
HORIZONTALLY  
1 PANE  
  
199<sup>00</sup>





363

Sam Houston Philatelics

75  
51957CAT # 2493a var. 29¢ Wood

of 10, still in booklet, misfolded horizontally  
 through bottom duck's eye, one very large, one  
 very, very small stamp; NH (E) 100. (PH) C\$

1561

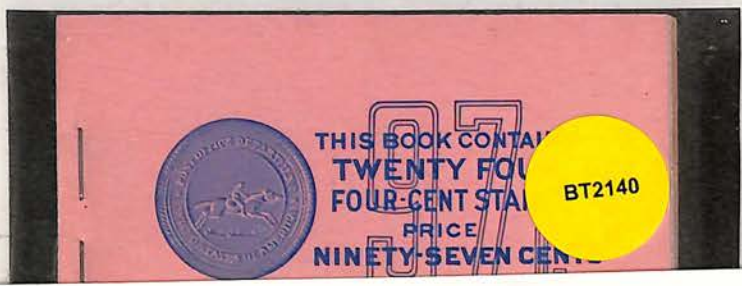
\* (\*\*)

@ CV

(\*)



#BK109 var UNEXPLODED BOOKLET w/ 4 PLATE BOOKLET PANE Price 99-  
MAJOR ERROR



1595c 7x12 miscat

\$150 Price



Style No. DS-06 C

G&K HOBBY PRODUCTS  
• 2121 Beale Ave, Altoona, PA 16601 •

COUNTRY EPO  
NOTES SlOGADT CATNO 1284c  
CAT. PRICE 20.00 SELLING PRICE 20.00



Style 1-02A



Selling Price \$65.00

Cat. Price

1949a PL # 22

BK 128

Compt + Blct, Blue ink w Light Second Impression on Front Cover

Price 40

BL 3531



BK 123

UNSTAPLED

BL 3527

Price 50



#1284 by R. BOOKLET  
PAGE OF 8 MAJOR MISPEX  
ERROR

\$ 99.



BS3290

#806a PANE OF 6 MAJOR PERF  
SHIFT ERROR

Price 175



BS2224

BKC4 Alignment Mark  
on Front Cover  
Net 100-



BL  
759

BKC8 vdr  
UNEXPLODED  
BOOKLET w/  
TOP PANE MIS-  
CUT ERROR  
  
\$150.00



BQ1711

BK147 175-  
Huge Ink Smear Multicolor  
on Bottom Pane



BKC22 Covers & All Panes, Large Mis-cut. ~~EE bars +~~ ~~reverted~~ Price 75-

BL3532



Style No. GK-107BK  
196146



Lighthouse Booklet  
also admitted  
WHITE MAJOR ERROR  
VERY FRAGILE  
\$ 299

PAHV53

PAHV241

#24416 25c  
LOVE BRIGHT  
PINK ADMITTED ON  
6 SINGLES IN  
PAGE OF 10  
UNEXPLODED  
BOOKLET  
M.L.B.D.



BL2255



#807a var. MISPERF ERROR UNEXPLODED BOOKLET Price \$1.25  
3K144 var (Furman)  
2



7206

70-

80% P1#

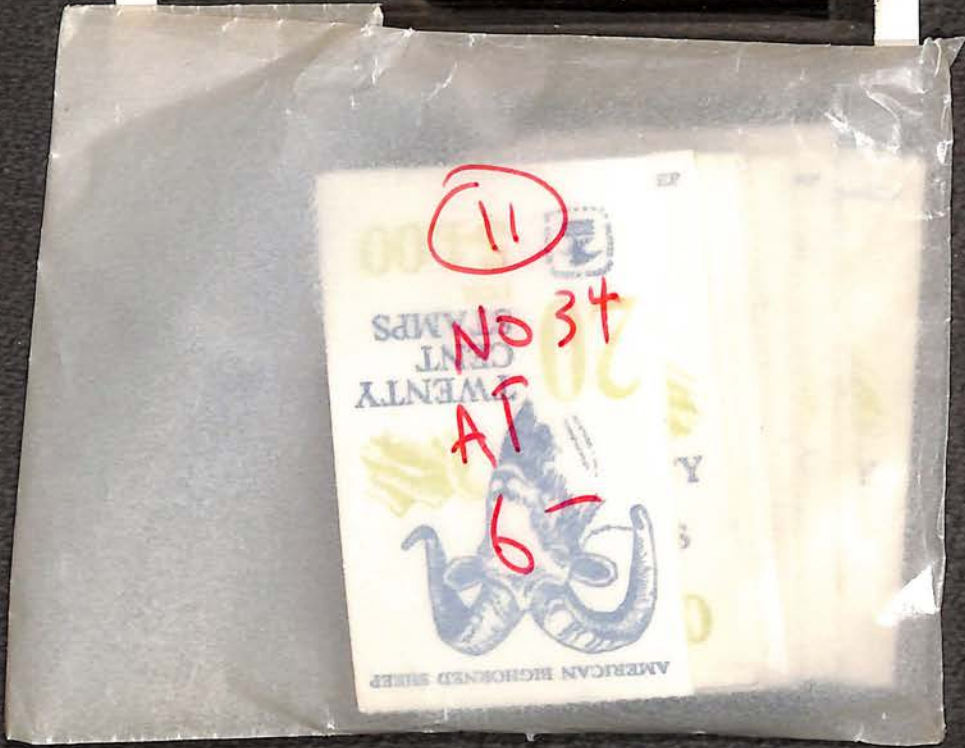
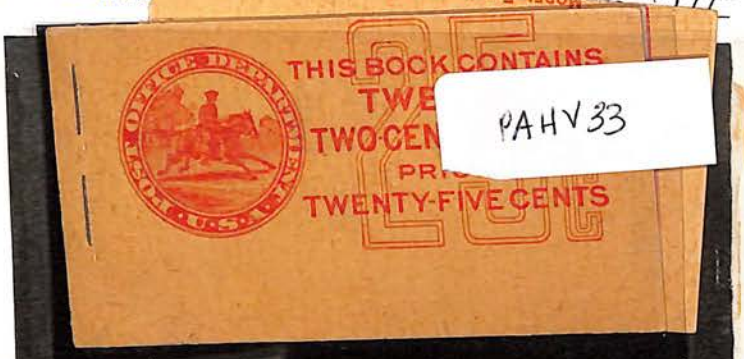


BK112 var. Complete Booklet 4 panes top w/ Huge miscut error Price \$150-



673

#BK58 var. UNEXPLODED MISPERT ~~MAJOR~~ MAJOR ERROR \$499.00



PAHV242

TDB45 1990  
DAFFODIL TEST  
STAMPS UNEXPLODED  
BOOKLET XF-XF



STAMPS IN BACK OF A COMPLETE BOOKLET OF FIVE PANES OF EIGHT.

#1510c MAJOR  
MIS CUT ERROR  
COMPLETE BKLT  
XF w/ PF CERT

\$299-

PAHV219

**10c stamps**  
FORTY STAMPS PRICE \$4.00





#519 BKLT PANE OF 6 w/ PLATE NO. CV500 - Price \$299 -



#583a BKLT PANE OF 6 w/ PARTIAL PLATE NO. Cat. Price 200 - Our Price 190 -



#463a Booklet Pane w/ Plate # Mint OG NH CV 240 - Price \$100 -





# 332a 24 1908 Booklet Pane/6 w/ Plate #

CV 310 - Price \$160 -



# C10a BKLT PANE OF 3 SOME SEPARATION; SHINT GUM  
DUE TO MOUNT CV 70 - Price \$45 -



30c BKLT Pane/6 w/ Plate # Reinforced Perfs

CV 1,500 - Price \$399 -



#583a FINE OG LH PANE OF 6 SCARCE w7  
PLATE # 18698 250- Price



#583a BKU PANE OF 6 (PARTIAL PL#)  
VAR F-VF OG LH 199- Price



#332a 24 1908 Booklet Pane XF+ OG NH Gem  
315- Price



#583a 24 1926 Booklet Pane/6 XFOG NH Gem  
315- Price



BK C1, C10a  
XF OG NH  
COMPLETE  
BOOKLET

\$ 249<sup>00</sup>-

BT4507



#BK125 UNEXPLODED  
BKLT W/ 1ST PANE  
FOLD-OVER ERROR  
2-AVAILABLE  
\$ 175-  
each



BT2146

#BK125 UNEXPLODED  
BKLT W/ 2ND PANE  
FOLD-OVER ERROR

\$ 150-



BT2145

#BK112 FULL BKLTs  
w/ SLOGAN 2

3-AVAILABLE

0190- \$ 80.00  
each

#405b Fine NH  
(with perf separations)

CV \$110

Price \$45

AU



502b F-VF NH

CV 100-

Price \$45-

AU



#301c BOOKLET PANE  
OF 6 F-VF OG HK(2)  
NH(4) FRAGILE SOME  
PERF SEPARATION LOWER

CV 500-

\$260-



BT598

Scott #C10a (BKC1)

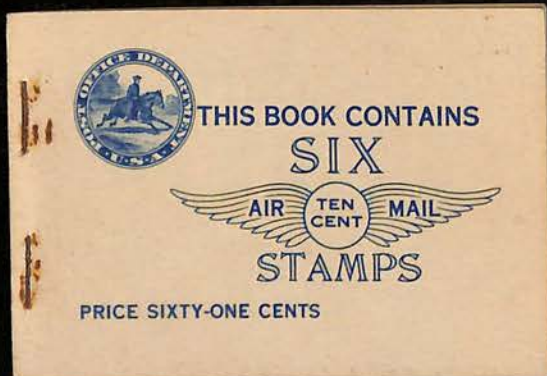
\$225.00

F/VF-OG-NH

Complete unexploded booklet of two panes

Extremely fresh and choice panes!

Scott catalog value is \$275.00



BT5585

#424d-425c  
 Booklet Panes/6  
 (1) without  
 Plate #  
 (1) with Plate #  
 Mint OG NH  
 CV 130 -  
 \$100 -



BU1437



BU1435



#502 (2)  
 Bkt Panes  
 VF NH  
 (1) w/plate #  
 (1) w/o Type 2  
 CV 9240 -  
 4175 -



BU5590



BL  
758

Catalog # BKC6  
CV \$  
Price \$ 74



BL  
760

Catalog # BKC14b  
CV \$  
Price \$ 52

#406a (2x)  
Booklet  
Panes of 6  
VF OG NH  
(1) without +  
(1) with Plate #  
CV \$ 250 -  
            
\$ 190 -



BU4944



#405b  
VF OG NH  
Booklet  
Panes/6  
w/Plate #  
+ (1) w/o  
CV \$ 250 -  
            
\$ 180 -

BU4943

#C25a, C39a  
#C51a BOOKLET  
PAGE

\$25.00 =

**BN7867**



#632a, 634d  
#7206  
BOOKLET PAGE  
OF 6  
CU 6750  
+ 65-

**BN7868**



#583a ~~XF~~ DG NH PAGE OF 6

CU 200<sup>00</sup> ++ Price 299-

**BP0706**



#C10a BOOKLET PAGE OF 3

45-

**BP1081**



583a Perf 10  
BKlt pane  
VF NH

BP9816

\$ 199-

#C10a VAR BKLT PANE MISC CUT ERROR  
FINE OG NH

01/20 -

Price \$120.00



BQ6854

#C10a VAR MISC CUT ERROR FINE OG NH

01/20 -

Price

\$120.00



BQ6853

#583a BOOKLET PANE OF 6  
XF NH

01/2000 +

Price

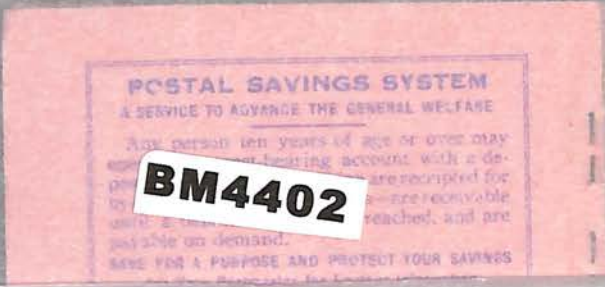
\$250.00



BN7990



#BK103 UNEXPLODED BOOKLET CW 4750 \$4275



BM4402

#BK110 UNEXPLODED BOOKLET SLOGAN 1 CW 3000 \$2700 EACH 3 AVAILABLE



BM4396

#BK110 UNEXPLODED w 3000 \$2200/ea. BOOKLET SLOGAN 1 SOME DEFECTS 1 AVAILABLE



BM4391

#BK112 UNEXPLODED BOOKLET SLOGAN 2 CW 9000 \$8100

~~BK112~~



BM4389

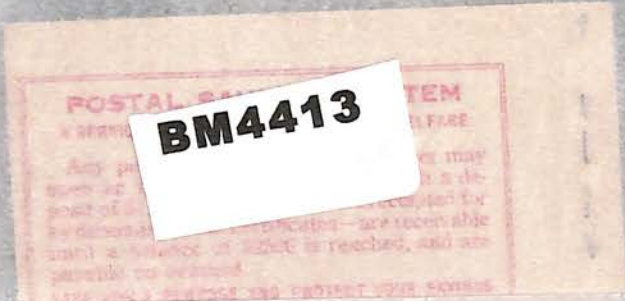
#BK 84 UNEXPLODED BOOKLET w/135<sup>00</sup> \$122<sup>00</sup>

~~BK84~~

BM4392

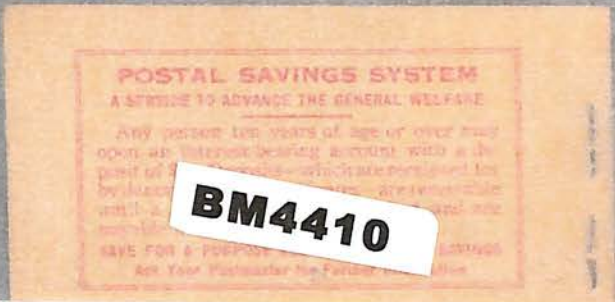


#BK 89 UNEXPLODED BOOKLET w/135<sup>00</sup> \$122<sup>00</sup>



BM4413

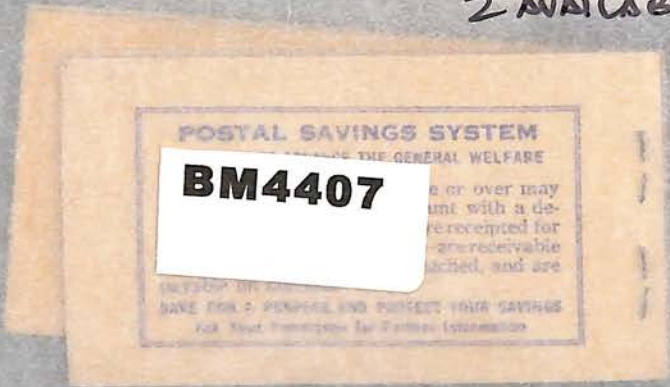
#BK 97 UNEXPLODED BOOKLET w/90<sup>00</sup> \$81<sup>00</sup>



BM4410

#BK 102 UNEXPLODED BOOKLET \$250<sup>00</sup>/EA

2 AVAILABLE



BM4407

#1213a 2 PAGES, FRONT/BACK, NO STAPLE HOLES  
Cat. Price \_\_\_\_\_ Our Price **BL3314** \$200-



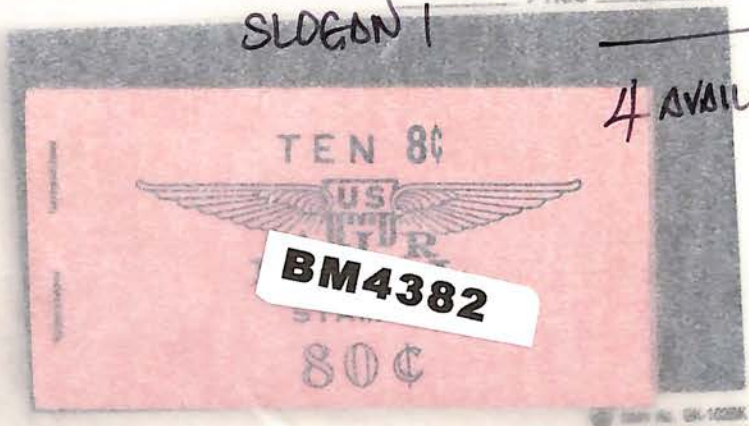
#BKCI F-VF DG NH



#BKCL-8 UNEXPLODED BOOKLET CV 65<sup>00</sup> \$60<sup>00</sup>



#BKC II UNEXPLODED BOOKLET CV 30<sup>00</sup> \$2700  
BKC II SLOGAN I Price 2700



4 AVAILABLE



A1111



US



BL8732

◆ # 502b PN Fine

III NT & CO.  
152930  
87-50DT/IV

55.00