

1932

ROTARY PRESS. PERF. 11x10 1/2

CHANGE OF COLOR



1933

COMMEMORATIVE ISSUES

N. R. A.



BYRD



Kosciusko



1934

COMMEMORATIVE ISSUES

MOTHERS OF AMERICA



WISCONSIN



MARYLAND



1934

NATIONAL PARKS ISSUE

NO WMK. PERF. 11



1935-36

COMMEMORATIVE ISSUES

BOULDER DAM



RHODE ISLAND



MICHIGAN



TEXAS



ARKANSAS



OREGON



WOMEN'S SUFFRAGE



# EXHIBITION SHEETS

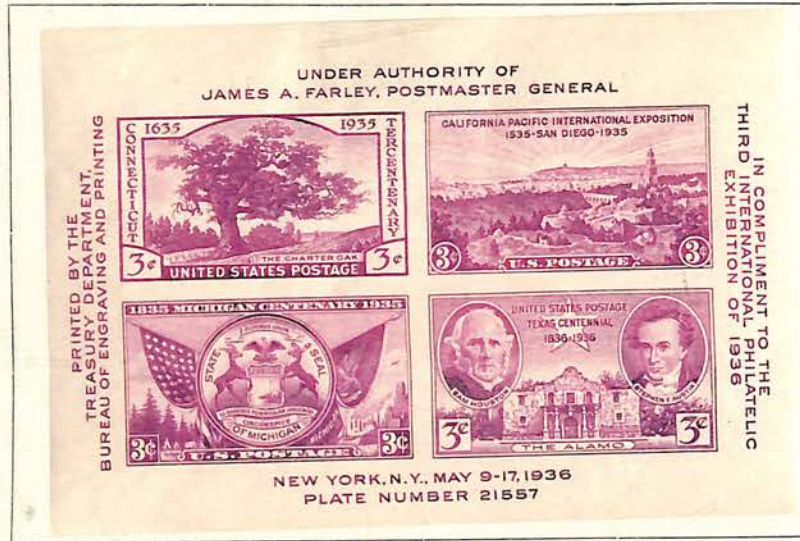
1936

THIRD INTERNATIONAL PHILATELIC EXHIBITION

CONNECTICUT, CALIFORNIA, MICHIGAN AND TEXAS ISSUES

IN SAME SHEET OF FOUR

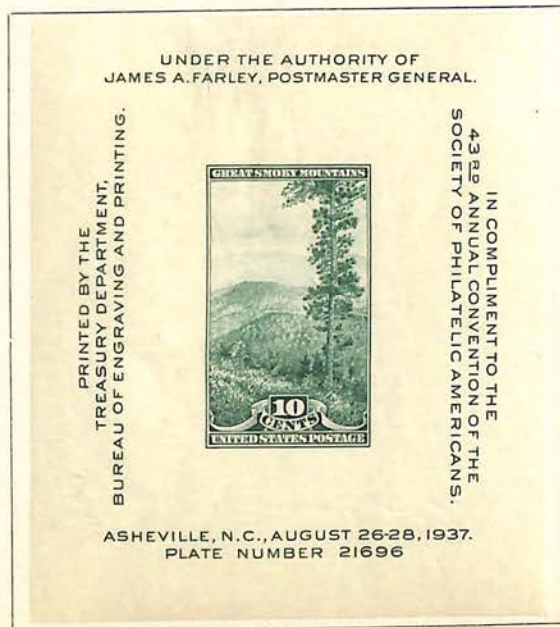
No. Wmk. IMPERF.



1937

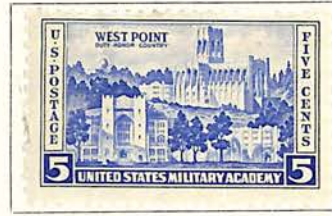
S. P. A. CONVENTION

SINGLE 10c NATIONAL PARKS ISSUE IN GREEN



1936-37

ARMY COMMEMORATIVE ISSUE



NAVY COMMEMORATIVE ISSUE



1937

COMMEMORATIVE ISSUES

NORTHWEST TERRITORY



VIRGINIA DARE



U. S. CONSTITUTION



TERRITORIAL COMMEMORATIVE ISSUE

ALASKA



HAWAII



VIRGIN ISLANDS



PUERTO RICO



1938

COMMEMORATIVE ISSUES

SWEDISH - FINNISH



CONSTITUTION RATIFICATION



NORTHWEST TERRITORY



1938

IOWA CENTENNIAL



1939

GOLDEN GATE EXPOSITION

PERF 10 1/2 x 11



NEW YORK WORLD'S FAIR.

PERF 10 1/2 x 11



INAUGURATION OF GEO. WASHINGTON

PERF 11



BASEBALL CENTENNIAL

PERF. 11 x 10 1/2



THE PRINTING PRESS

PERF 11 x 10 1/2



CANAL ZONE ISSUE

PERF. 11



1939-1940

THE FOUR STATE JUBILEE.

PERF.  $11 \times 10\frac{1}{2}$



THE PONY EXPRESS

PERF  $11 \times 10\frac{1}{2}$



IDAHO

PERF  $11 \times 10\frac{1}{2}$



PAN-AMERICAN

PERF  $10\frac{1}{2} \times 11$



WYOMING

PERF  $10\frac{1}{2} \times 11$





1940

THE FAMOUS AMERICANS SERIES  
ROTARY PRESS AUTHORS PERF II



IRVING



COOPER



EMERSON  
POETS



ALCOTT



CLEMENS



LONGFELLOW



WHITTIER



LOWELL  
EDUCATORS



WHITMAN



RILEY



MANN



HOPKINS



ELIOT



WILLARD



B.T. WASHINGTON

SCIENTISTS



AUDIBON



Dr LONG



BURBANK



Dr REED, U.S.A



ADDAMS

1940  
COMPOSERS



FOSTER



SOUSA



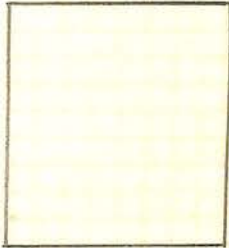
HERBERT



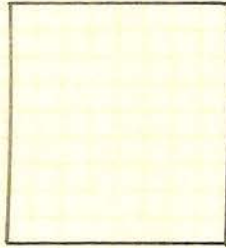
MACDOWELL



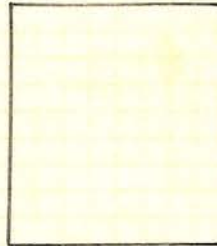
NEVIN



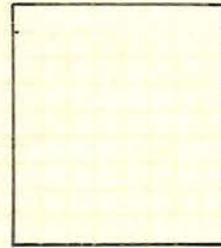
STUART



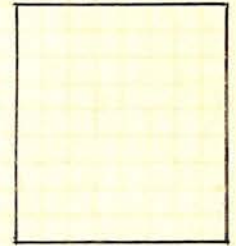
WHISTLER



SAINT-GAUDENS

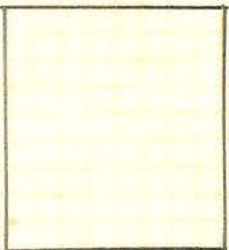


FRENCH

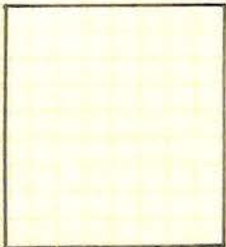


REMINGTON

INVENTORS



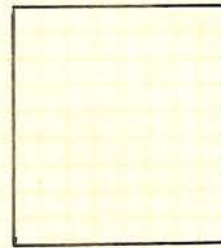
WHITNEY



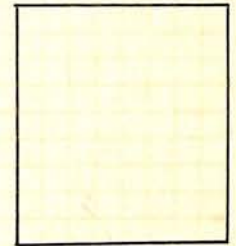
MORSE



MCCORMICK



HOWE

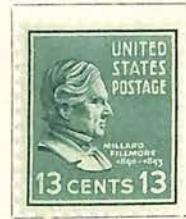


BELL

1938

ROTARY PRESS PRINTING

PERF. 11 x 10½



1938

ROTARY PRESS PRINTING

PERF. 11 x 10 1/2

14c



16c



# AIR MAIL STAMPS

1918

PERFORATED 11



1923

PERFORATED 11



1926-27

PERFORATED 11



1927

LINDBERGH ISSUE

PERFORATED 11



## AIR MAIL STAMPS

1928

PERFORATED 11



1930

PERFORATED 11



GRAF ZEPPELIN ISSUE

PERFORATED 11



1931-32

ROTARY PRESS PRINTING

PERFORATED 10½x11



# AIR MAIL STAMPS

1933-34

CENTURY OF PROGRESS ISSUE

No Wmk. PERF. 11



ROTARY PRESS PRINTING

PERF. 10 1/2 X 11



1935-37

TRANS-PACIFIC ISSUE

PERF. 11



1934-36

SPECIAL DELIVERY AIRMAIL

PERF. 11

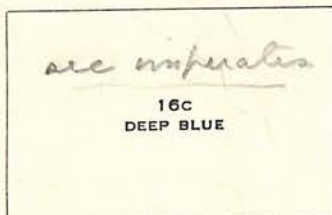


1935

SPECIAL PRINTING

IMPERFORATE WITHOUT GUM

1938  
EAGLE AIR MAIL  
PERF 11



1939

TRANS-ATLANTIC  
PERF 11



# PARCEL POST STAMPS

1912-13

WATERMARKED U S P S. PERFORATED 12





# SPECIAL DELIVERY STAMPS

MESSENGER RUNNING

NO WATERMARK. PERFORATED 12

1885



AT ANY POST OFFICE

1888



1893



1894-95

LINE UNDER "TEN CENTS"



1902-27

MESSENGER ON BICYCLE



## SPECIAL DELIVERY STAMPS

HELMET OF MERCURY DESIGN  
WATERMARKED DOUBLE LINED U S P S. PERFORATED 12.

1908



1922-31

POSTMAN AND MOTORCYCLE  
NO WATERMARK. PERFORATED 11



ROTARY PRESS PRINTING  
PERFORATED 11X10½



1925

POST OFFICE MOTOR VAN  
PERFORATED 11



IMPERFORATE STAMPS

1902



314



320c

65.00

1903



320

1908

WATERMARKED DOUBLE LINED U S P S



343



344



345



346



347

1909

LINCOLN MEMORIAL ISSUE



# IMPERFORATE STAMPS

1909

ALASKA-YUKON ISSUE



HUDSON-FULTON ISSUE



1910

WATERMARKED SINGLE LINED U S P S



1912-15

NUMERALS IN LOWER CORNERS



# IMPERFORATE STAMPS

1916-17

NO WATERMARK



1918-20

OFFSET PRINTING



1922-26

NO WATERMARK



1923

HARDING MEMORIAL ISSUE



*IMPERFORATE STAMPS*

*1933*

*Chicago Exhibition*

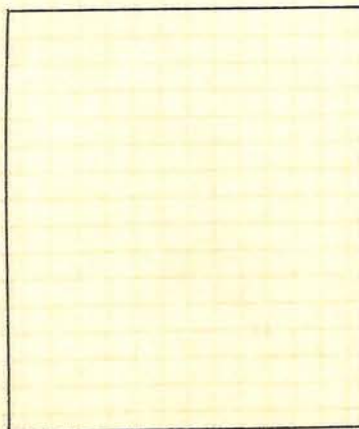


*Byrd*



*1934*

*Mothers of America*



*Wisconsin*



*IMPERFORATE STAMPS*  
*1935*

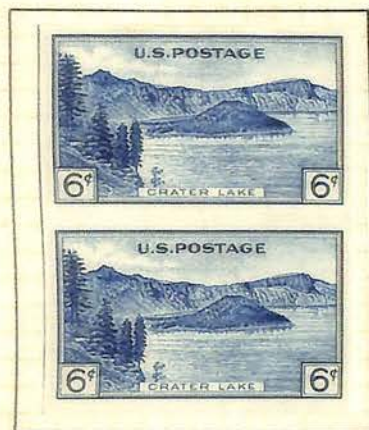
*National Parks Issue*



*IMPERFORATE STAMPS*

1935

*National Parks Issue*



*Special Delivery Airmail*





# COIL STAMPS

1910

WATERMARKED SINGLE LINED U S P S

PERFORATED 12



PERFORATED 8½



COIL STAMPS

1912-15

NUMERALS IN LOWER CORNERS

PERFORATED 8½



1914-15

PERFORATED 10



# COIL STAMPS

1914-15

(CONTINUED)

ROTARY PRESS PRINTINGS

PERFORATED 10



*II*

IMPERFORATE



*#*

*I*

# COIL STAMPS

1916-17

ROTARY PRESS PRINTINGS

NO WATERMARK. PERFORATED 10



# COIL STAMPS

1922-26

ROTARY PRESS PRINTINGS

PERFORATED 10



1929

EDISON COMMEMORATIVE ISSUE



## COIL STAMPS

1930

ROTARY PRESS PRINTINGS

PERFORATED 10



1932

ROTARY PRESS PRINTINGS

PERFORATED 10



*REISSUE*



1938

COILS

UNWATERMARKED HORIZONTALS PERFORATED 10



VERTICALS

