

POSTAGE

Provisional Issues by Postmasters

New York

1845-47



Blue Wove
Paper
5 C
BLACK
Scott 9X2

Gray Wove
Paper
5 C
BLACK
Scott 9X3

Providence

1846



Scott 10X1



Scott 10X2



St. Louis

1845-46



Scott 11X1



Scott 11X2



Scott 11X3

1846

1847

Same
5 C
BLACK ON
GRAY LILAC
Scott 11X4

10 C
BLACK ON
GRAY LILAC
Scott 11X5

20 C
BLACK ON
GRAY LILAC
Scott 11X6

Same
5 C
BLACK
ON BLUISH
PELURE
Scott 11X7

10 C
BLACK
ON BLUISH
PELURE
Scott 11X8

POSTAGE

General Issues

1847

Printed by Rawdon, Wright, Hatch & Edson
Imperforate



1875

Special Printings




Reproductions of Issue of 1847

Produced by the U.S. Bureau of Engraving and Printing
Imperforate



1851-56

Printed by Toppan, Carpenter, Casilear & Co.
Imperforate

	1 C BLUE Type Ib Scott 5A	1 C BLUE Type Ia Scott 6		1 C BLUE Type III Scott 8	1 C BLUE Type IIIa Scott 8A
		3 C ORANGE BROWN Type II Scott 10A		3 C DULL RED Type II Scott 11A	
	10 C GREEN Type II Scott 14	10 C GREEN Type III Scott 15	10 C GREEN Type IV Scott 16		

POSTAGE

1857-61

Printed by Toppan, Carpenter & Co.

Perforated 15.5



1 C
BLUE
Type Ia
Scott 19



1 C
BLUE
Type III
Scott 21



1 C
BLUE
Type IV
Scott 23



3 C
ROSE
Type II
Scott 25A



3 C
DULL RED
Type IV
Scott 26A

5 C
BRICK RED
Type I
Scott 27

5 C
RED BROWN
Type I
Scott 28

5 C
INDIAN RED
Type I
Scott 28A

5 C
BROWN
Type I
Scott 29

5 C
Type I
Scott 30



10 C
GREEN
Type I
Scott 31

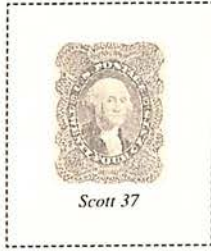
10 C
GREEN
Type II
Scott 32



10 C
GREEN
Type IV
Scott 34



12 C
BLACK
(Plate 3)
Scott 36B



Scott 37



Scott 39

POSTAGE

1861-62
Second Issue



3 C
LAKE

Scott 66

Not
known
used

100

x 25



1861-66

7M



78

6655

POSTAGE

Printed by the National Bank Note Co.

1867

Same Designs as 1861-66 Issues

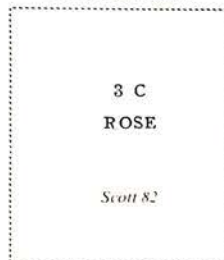
Embossed with Grills of Various Sizes

Grill with Points Up

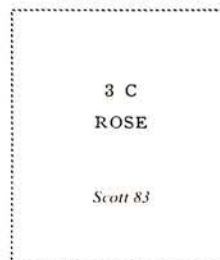
A. Grill covering the entire stamp



B. Grill measuring about 18x15 mm.

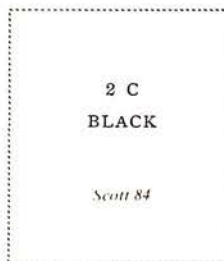


C. Grill measuring about 13x16 mm.

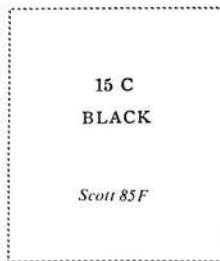
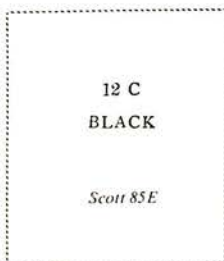
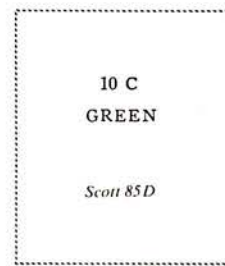
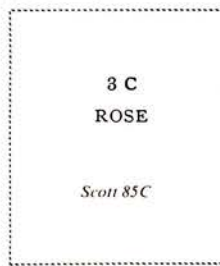
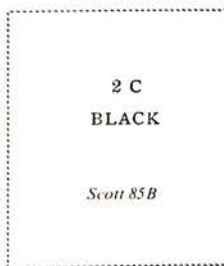
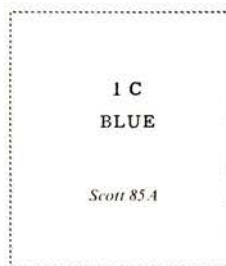


Grill with Points Down

D. Grill measuring about 12x14 mm.



Z. Grill measuring about 11x14 mm.



1100

POSTAGE

Printed by the National Bank Note Co.

1867

Same Designs as 1861-66 Issues
Embossed with Grills of Various Sizes
Grill with Points Down

E. Grill measuring about 11x13 mm.



F. Grill measuring about 9x13 mm.



POSTAGE

1875

Re-Issue of Issue of 1861-66
Printed by the National Bank Note Co.

Without Grill



2 C
BLACK

Scott 103

3 C
BROWN
RED

Scott 104

5 C
LIGHT
BROWN

Scott 105

10 C
GREEN

Scott 106

12 C
BLACK

Scott 107

15 C
BLACK

Scott 108

24 C
DEEP VIOLET

Scott 109

30 C
BROWNISH
ORANGE

Scott 110

90 C
BLUE

Scott 111

POSTAGE

Printed by the National Bank Note Co.

1869

With Grill



Government Re-Issues and Special Printings

1875

Re-Issues of Issue of 1869

Without Grill

<p>Hard White Paper 1 C BUFF <i>Scott 123</i></p>	<p>2 C BROWN <i>Scott 124</i></p>	<p>3 C BLUE <i>Scott 125</i></p>	<p>6 C BLUE <i>Scott 126</i></p>	<p>10 C YELLOW <i>Scott 127</i></p>
<p>12 C GREEN <i>Scott 128</i></p>	<p>15 C BROWN AND BLUE <i>Scott 129</i></p>	<p>24 C GREEN AND VIOLET <i>Scott 130</i></p>	<p>30 C BLUE AND CARMINE <i>Scott 131</i></p>	<p>90 C CARMINE AND BLACK <i>Scott 132</i></p>

1880

Special Printing of Issue of 1869

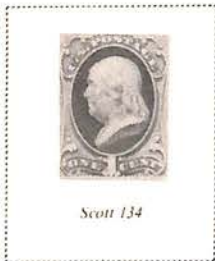
<p>Soft Porous Paper 1 C BUFF <i>Scott 133</i></p>
--

POSTAGE

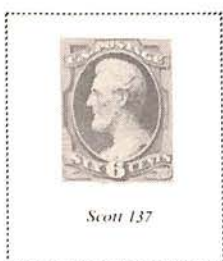
Printed by the National Bank Note Co.

1870-71

With Grill



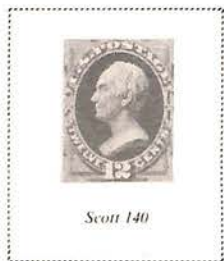
Scott 134



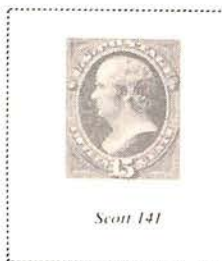
Scott 137



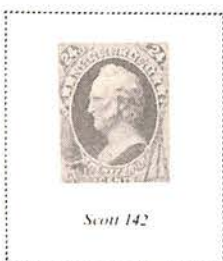
Scott 139



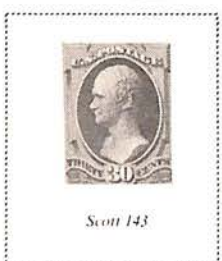
Scott 140



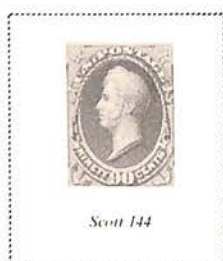
Scott 141



Scott 142



Scott 143



Scott 144

Without Grill



b



POSTAGE

Printed by the Continental Bank Note Co.

1873

Same designs as issue of 1870-71 but with secret marks on the values from 1c to 15c



1875



179

POSTAGE

Printed by the American Bank Note Co.

1879

Soft Porous Paper



1882



1881-82

Designs of Issue of 1873 Re-engraved



1883



211

POSTAGE

Printed by the American Bank Note Co.

1887-88



1890-93



POSTAGE
1893
Columbian Exposition



Scott 240



Scott 241



Scott 242



Scott 243



Scott 244



Scott 245

POSTAGE

1894

Unwatermarked

Engraved



POSTAGE

Watermarked USPS

1895



1898



POSTAGE

Watermarked USPS
1898

Trans-Mississippi Exposition Issue



1901

Pan-American Exposition Issue



POSTAGE

1912-14

Watermark 190

Perforated 12



Imperforate



COIL STAMPS

Perforated 8½ Horizontally



Perforated 8½ Vertically



Perforated 12



Watermark 191



POSTAGE

Unwatermarked
Rotary Press COIL STAMPS
1916-19
Perforated 10 Horizontally



1916-22
Perforated 10 Vertically



Type II
2 C
CARMINE

Scott 491



5 C
BLUE

Scott 496

10 C
ORANGE
YELLOW

Scott 497

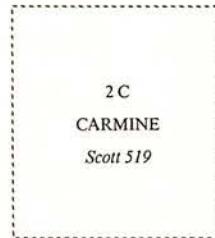
POSTAGE

1917

Watermark 191

Flat Plate Printing

Perforated 11



1919-21

Unwatermarked

Rotary Press Printing

Perforated 11 x 10



Type II
2C
CARMINE
ROSE
Scott 539



3C
VIOLET
Scott 541

Perforated 10 x 11



Perforated 10



Perforated 11



1918-20

Flat Plate Printing



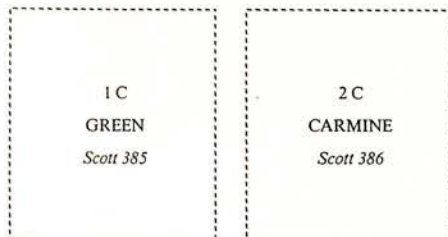
POSTAGE

Watermark 190

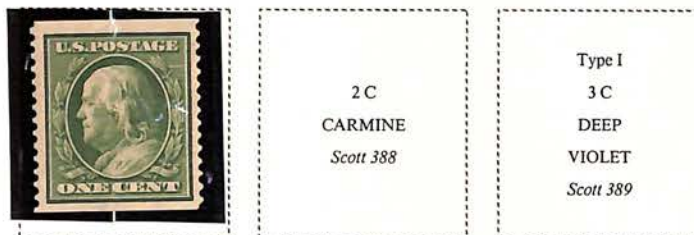
1910-11

COIL STAMPS

Perforated 12 Horizontally

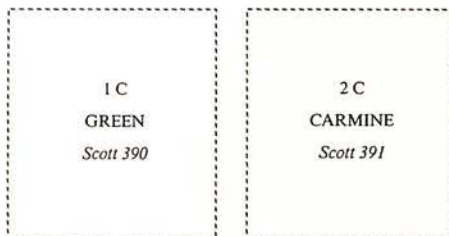


Perforated 12 Vertically



1910-13

Perforated 8½ Horizontally



Perforated 8½ Vertically



POSTAGE

Watermarked **USPS**

1908-09

Imperforate



COIL STAMPS

1908-10

Perforated 12 Horizontally



1909

Perforated 12 Vertically



10 C
YELLOW

Scott 356

2000⁰⁰

POSTAGE

Watermarked USPS

COIL STAMPS

1910-11

Perforated 12 Horizontal



Perforated 8½ Horizontally



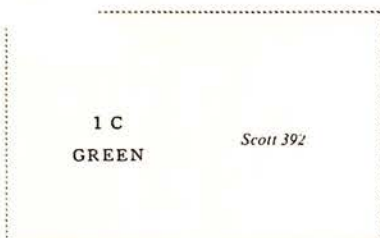
Perforated 12 Vertically



2 C
CARMINE *Scott 388*

Type I
3 C *Scott 389*
DEEP VIOLET

Perforated 8½ Vertically



1 C
GREEN *Scott 392*



POSTAGE
Watermarked USPS

1910-11

Imperforate



COIL STAMPS

Perforated 12 Horizontally



Perforated 12 Vertically

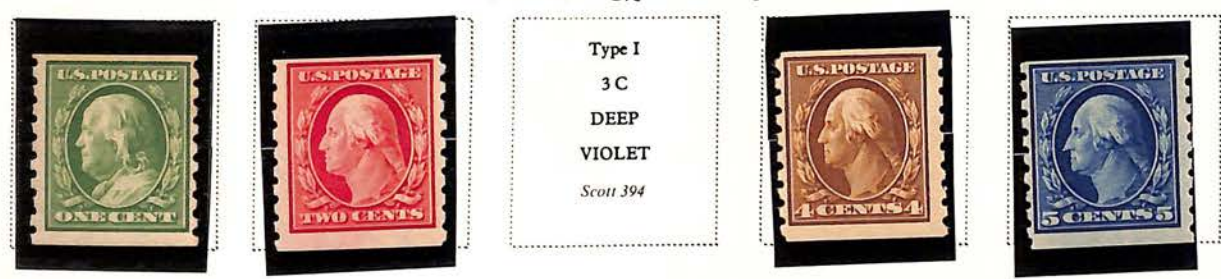
<p>1 C GREEN <i>Scott 387</i></p>	<p>2 C CARMINE <i>Scott 388</i></p>	<p>Type I 3 C DEEP VIOLET <i>Scott 389</i></p>
--	--	---

1910-13

Perforated 8½ Horizontally



Perforated 8½ Vertically



Type I
3 C
DEEP
VIOLET

Scott 394

POSTAGE

Unwatermarked

1922-26

Perforated 11



POSTAGE

Watermarked USPS

Flat Plate Printing

COIL STAMPS

1912

Perforated 8½ Horizontally

Perforated 8½ Vertically



Perforated 8½ Vertically



1914

Perforated 10 Horizontally



Perforated 10 Vertically



Type I
3 C
VIOLET

Scott 445

4 C
BROWN

Scott 446



POSTAGE

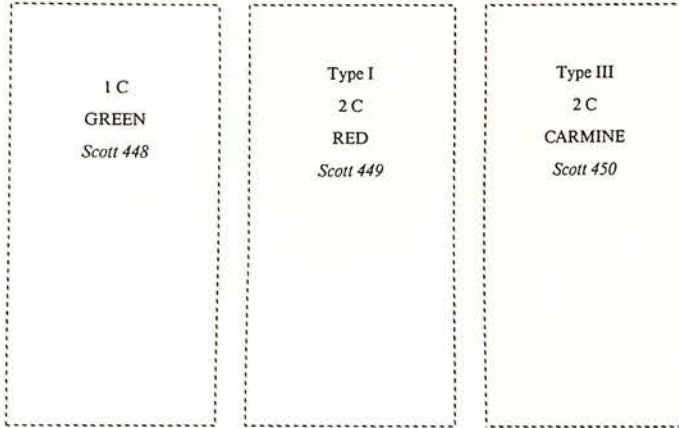
1914-16

COIL STAMPS

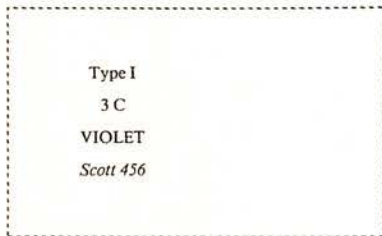
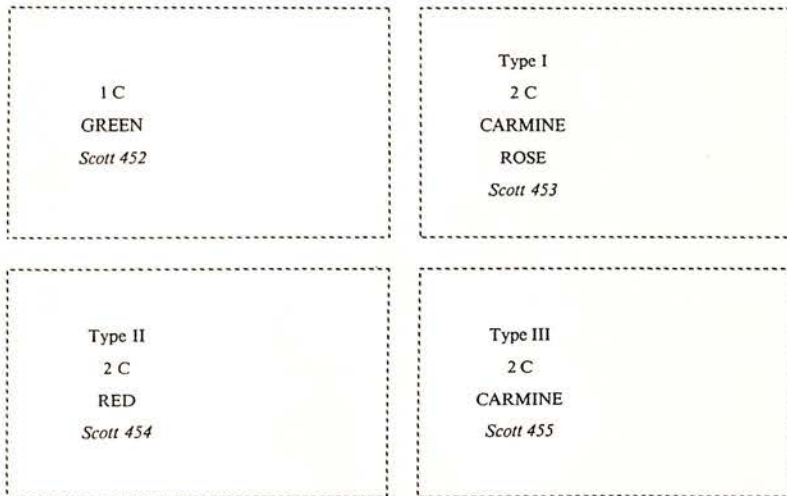
Watermark 190

Rotary Press

Perforated 10 Horizontally

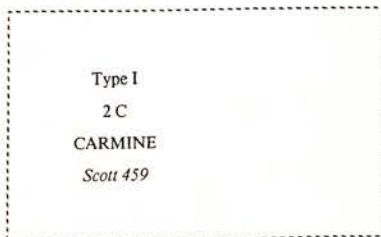


Perforated 10 Vertically



1914

Imperforate



POSTAGE
Watermarked USPS

1914-16

COIL STAMPS

Flat Plate Printing

Perforated 10 Horizontally



Perforated 10 Vertically



Rotary Press Printing

Perforated 10 Horizontally



Perforated 10 Vertically

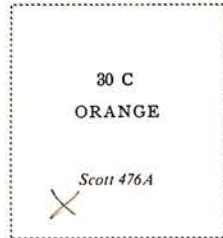


Imperf



POSTAGE

Unwatermarked
1916-17
Perforated 10



POSTAGE

Watermarked USPS

1914-15

Perforated 10



Flat Plate Printing
1915

Watermarked USPS
Perforated 10



Watermarked USPS
Perforated 11



POSTAGE

Unwatermarked
1916-17
Imperforate



Type Ia
2 C
CARMINE

Scott 482A

68M



Rotary Press
COIL STAMPS
1916-22
Perforated 10 Horizontally



Perforated 10 Vertically



POSTAGE

1923-29
Rotary Press Printing
COIL STAMPS
Perforated 10 Vertically



Perforated 10 Horizontally



POSTAGE

1904-09

Watermark 191

Louisiana Purchase Exposition



Jamestown Exposition



Lincoln Memorial

Perforated 12

Imperforate



Alaska-Yukon-Pacific Exposition

Perforated 12

Imperforate



Hudson-Fulton

Perforated 12

Imperforate



POSTAGE

Watermark 191

1908-09

Perforated 12



Watermark 190

1910-11

Perforated 12



POSTAGE

Watermarked USPS

1909

On Bluish Experimental Paper



3 C
DEEP
VIOLET

Scott 359

4 C
ORANGE
BROWN

Scott 360

5 C
BLUE

Scott 361

6 C
RED
ORANGE

Scott 362

8 C
OLIVE
GREEN

Scott 363

10 C
YELLOW

Scott 364

13 C
BLUE
GREEN

Scott 365

15 C
PALE
ULTRA-
MARINE

Scott 366

POSTAGE

Watermarked USPS

1902-03

Perforated 12



Scott 313

2000



1906-08

Imperforate



W

POSTAGE

Unwatermarked

1918-20

Offset Printing

Perforated 11



Type VI
2 C
CARMINE

Scott 528A



Type VII
2 C
CARMINE

Scott 528B



Type III
3 C
VIOLET

Scott 529



Imperforate



Type V
2 C
CARMINE

Scott 533



Type VII
2 C
CARMINE

Scott 534B



1919

Perforated 12½





505 Error center stamp

POSTAGE

1919-24

Flat Plate Printing

Perforated 11

Victory



Pilgrim Tercentenary



Harding Memorial

Flat Plate Printing

Perforated 11

Imperforate

Rotary Press Printing

Perforated 10



Flat Plate Printing

Perforated 11

Huguenot-Walloon Tercentenary



POSTAGE

1913-15

Watermark 190

Panama-Pacific Exposition

Perforated 12



Perforated 10



POSTAGE

Flat Plate Printing
Unwatermarked
1917-19
Perforated 11



POSTAGE

1926-34

Rotary Press Printing

Imperforate

624



Perforated 11x10½, 10½ x 11



POSTAGE

1929

638



14

POSTAGE

Battle of White Plains

International Philatelic Exhibition

October 16th to 23rd, 1926

New York, N. Y.



POSTAGE

1938
Presidential Definitives



POSTAGE

1939

COIL STAMPS



AIR POST STAMPS

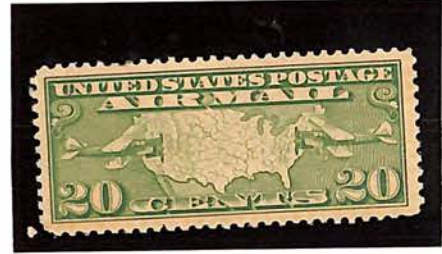
1918



1923



1926-27



1927

Lindbergh



1928



AIR POST STAMPS

1930

Graf Zeppelin



✓H



✓4



✓#

AIR POST STAMPS

Flat Plate Printing
Perforated 11

1930



Rotary Press Printing
Perforated 10½x11

1931-34



1933
Flat Plate Printing
Perforated 11
Century of Progress



1935-37
Trans-Pacific



AIR POST STAMPS

1938



1939

Trans-Atlantic



1941-44



SPECIAL DELIVERY STAMPS

Unwatermarked
Perforated 12

1885



Scott E1

1888



Scott E2

1893



1894



Watermarked USPS

Perforated 12

1895



1908



1902



Watermarked USPS

Perforated 12

1911



Perforated 10

1914



Unwatermarked

Perforated 10

1916



Perforated 11

1917

