

6

PALESTINE MANDATE

Military Mail – World War I

Army & Field Post Offices; Civilian Post Offices; and Censor Markings

Field Post Office SZ 15 – Abbassia

Wrapper sent to Sussex on 29 November 1918 from FPO SZ 15 – Serial A – Censor CM 3 #4231



PALESTINE MANDATE

Military Mail - World War I

Army & Field Post Offices; Civilian Post Offices; and Censor Markings

Army Post Office SZ17 - Palestine Line of Communications

Letter sent from Palestine to Alexandria on 1 August 1917 was censored with CM #3-4363 and includes a DM 7 Alexandria dumb mark



PALESTINE MANDATE

Military Mail - World War I

Army & Field Post Offices; Civilian Post Offices; and Censor Markings

Army Post Office SZ 17 - Kantara

Letter sent to Chatby Battery, EEF on 7 November 1917 from APO SZ 17, Kantara. Signed by censor. Censor CM 3 # 4320.



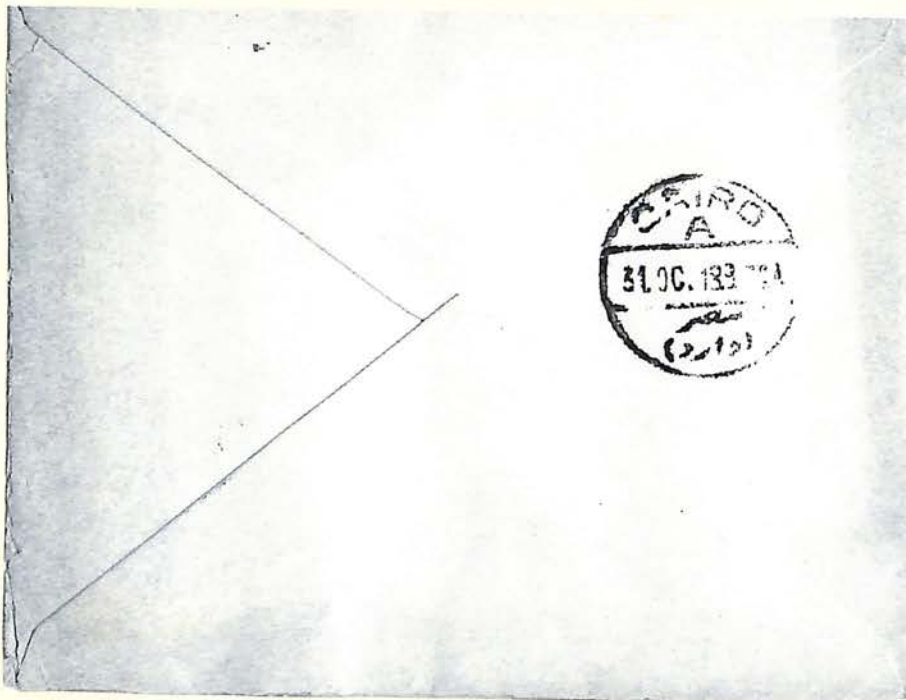
PALESTINE MANDATE

Military Mail - World War I

Army & Field Post Offices; Civilian Post Offices; and Censor Markings

Army Post Office SZ 22 - Harbour Office, Port Said

Letter sent to Cairo on 30 October 1918 from Port Said, APO SZ 22 - Serial C. Arrival Postmark - Serial A and signature of censor. Censor CM 3 #3995



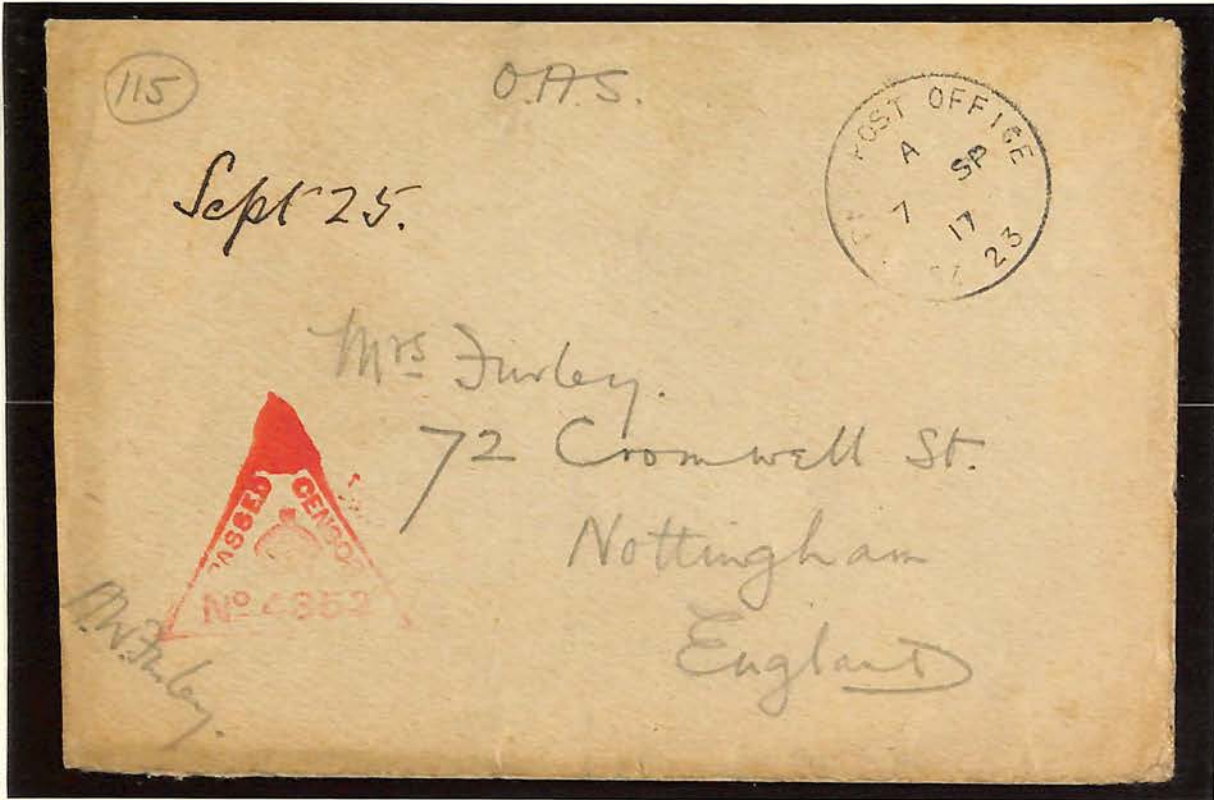
PALESTINE MANDATE

Military Mail – World War I

Army & Field Post Offices; Civilian Post Offices; and Censor Markings

Army Post Office SZ 23 – Abbassia

O.A.S. letter sent to England on 7 September 1917 from APO SZ 23 – Serial A, Type s.2 – Censor CM 3 # 4352



PALESTINE MANDATE

Military Mail – World War I

Army & Field Post Offices; Civilian Post Offices; and Censor Markings

Army Post Office SZ 24 – Alexandria: Suez

O.A.S. letter sent to London on 24 July 1917 from APO SZ 24 – Serial X – Censor CM 3 #3981



PALESTINE MANDATE

Military Mail - World War I

Army & Field Post Offices; Civilian Post Offices; and Censor Markings

Army Post Office SZ 25 - Shallufa

Letter sent to Hampstead, England on 1 August 16 from Shallufa - Southern Section of Suez Defenses. Censor signature and Censor CM # 3394



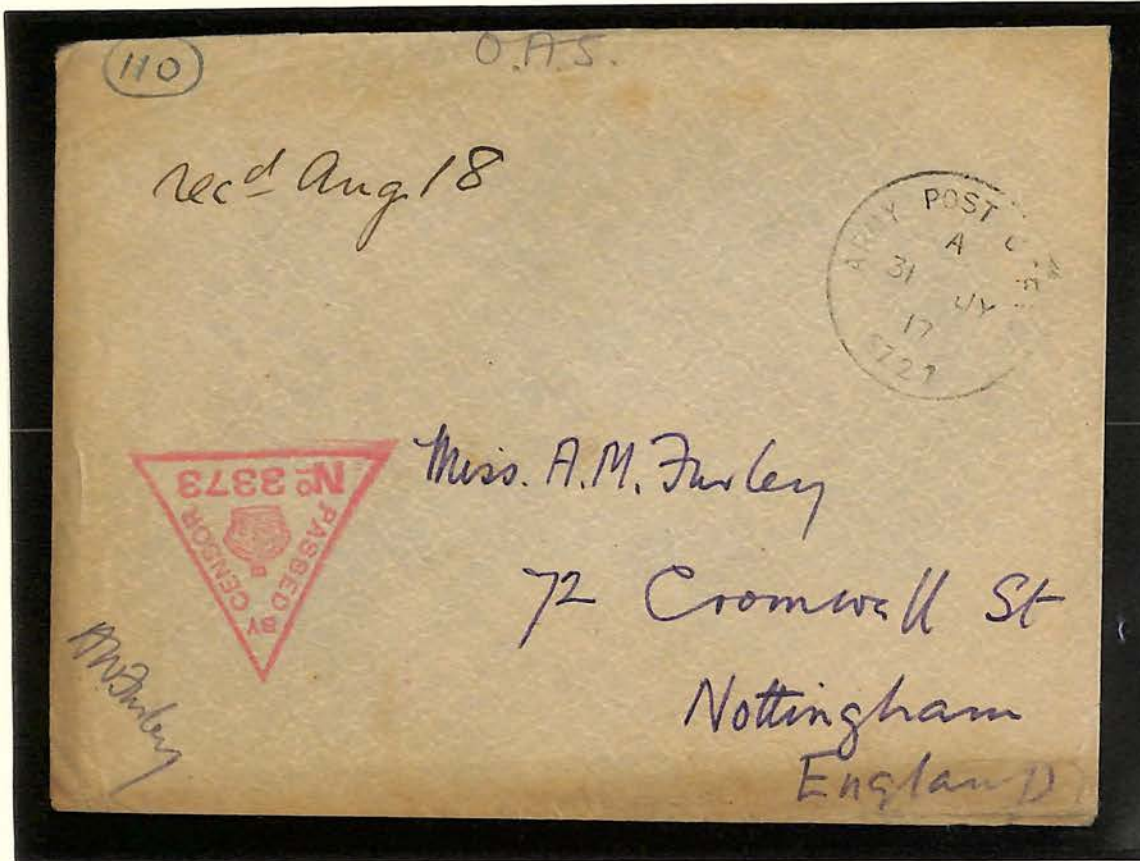
PALESTINE MANDATE

Military Mail – World War I

Army & Field Post Offices; Civilian Post Offices; and Censor Markings

Army Post Office SZ 27 – Gaza

O.A.S. letter sent to England on 31 July 1917 from SZ 27 – Serial A – Censor CM 3 #3373



PALESTINE MANDATE

Military Mail - World War I

Army & Field Post Offices; Civilian Post Offices; and Censor Markings

Army Post Office SZ 28 - Sidi Bishr

Philatelic envelope cancelled at SZ 28 on 13 May 1919. Troops were in the GHQ Line of Command

<p>WERNER & CO. AUSTRIA M. & S. LTD.</p> <p>ACTIVE</p>	<p>SERVICE</p>
<p>This envelope must not be used for coin or valuables. It cannot be accepted for registration.</p>	<p>[Several letters may be forwarded in this Cover, but these must be all from the same writer. The Cover should be addressed in such case to the Base Officer.]</p>
<p>NOTE:—</p>	<p>13 MAY 1919 SZ 28</p>
<p>Correspondence in this envelope need not be censored Regimentally. The contents are liable to examination at the Base.</p>	<p>Address:—</p>
<p>The following Certificate must be signed by the writer:—</p>	<p>_____</p> <p>_____</p> <p>_____</p>
<p><i>I certify on my honour that the contents of this envelope refer to nothing but private and family matters.</i></p>	
<p>Signature } Name only }</p>	

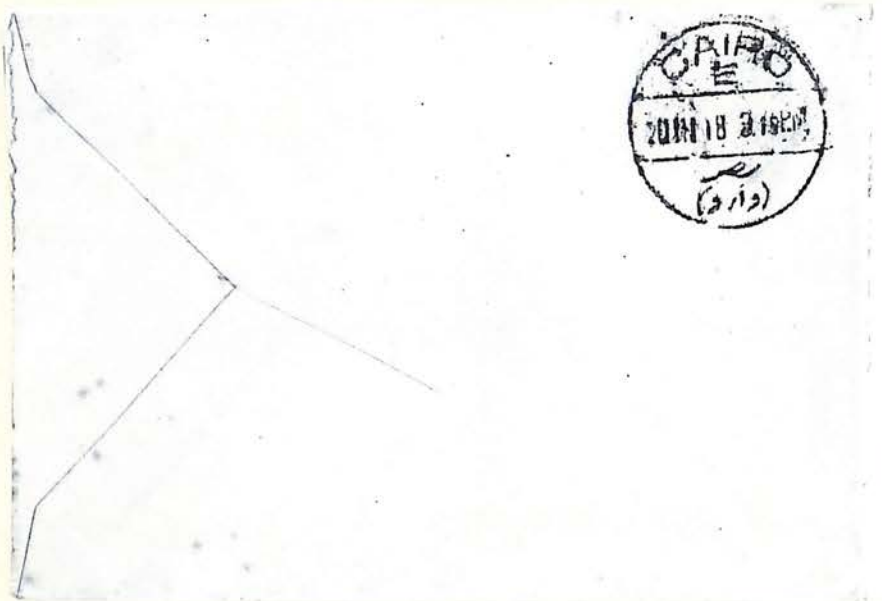
PALESTINE MANDATE

Military Mail - World War I

Army & Field Post Offices; Civilian Post Offices; and Censor Markings

Army Post Office SZ 43 - Rafa Palestine

Letter sent to Cairo on 19 March 1918 from Rafa. Senders signature and censors signature with Censor CM 7 # 834



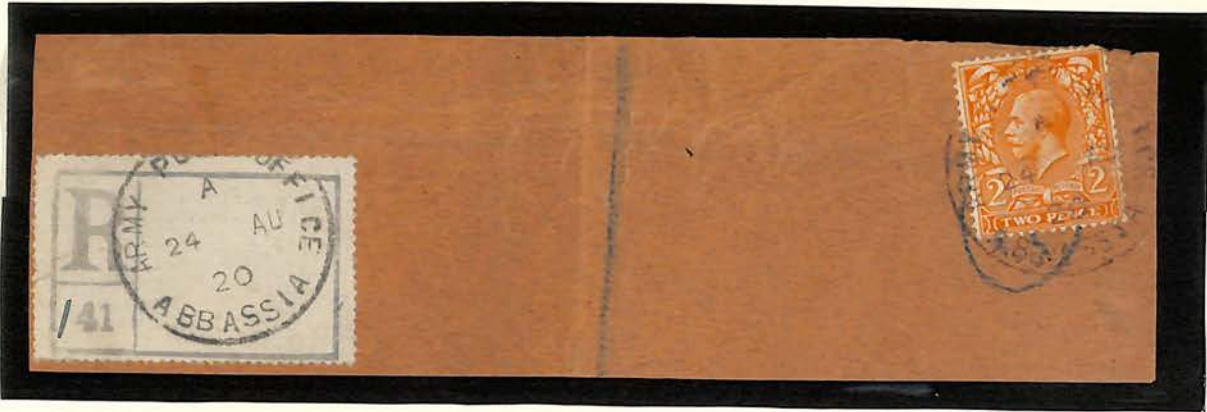
PALESTINE MANDATE

Military Mail – World War I

Army & Field Post Offices; Civilian Post Offices; and Censor Markings

Army Post Office Abbassia – Type Ab.3

Part of registered letter sent from APO Abbassia – Serial A – on 24 August 1920 – last day of use. Only used between 10 July 1920 & 24 August 1920.



Dates of use
10 July 20 to 24 Aug 20

Pg 73

PALESTINE MANDATE

Military Mail - World War I

Army & Field Post Offices; Civilian Post Offices; and Censor Markings

Army Post Office - Kantara

Letter sent to Dorset and forwarded on 17 July 1920 from Kantara No markings other than the forwarded address



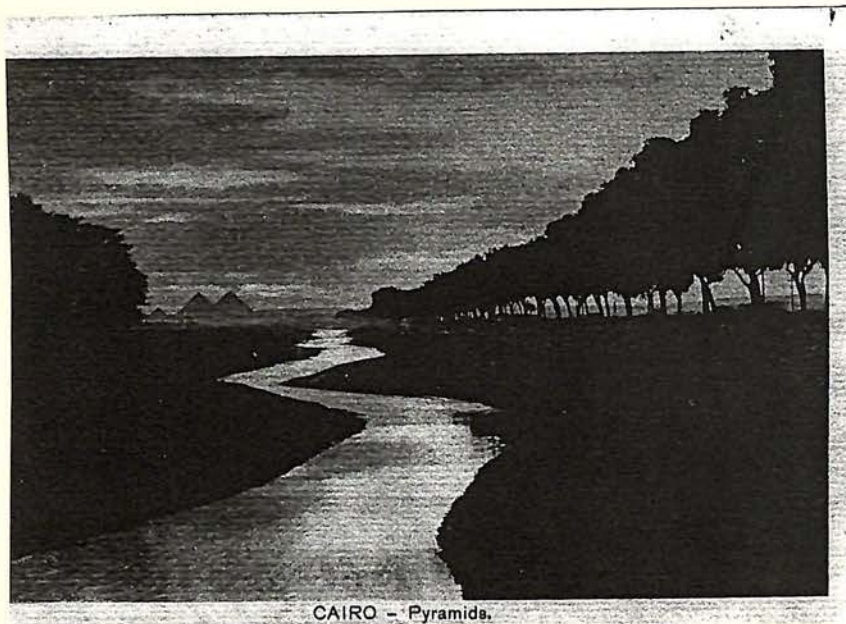
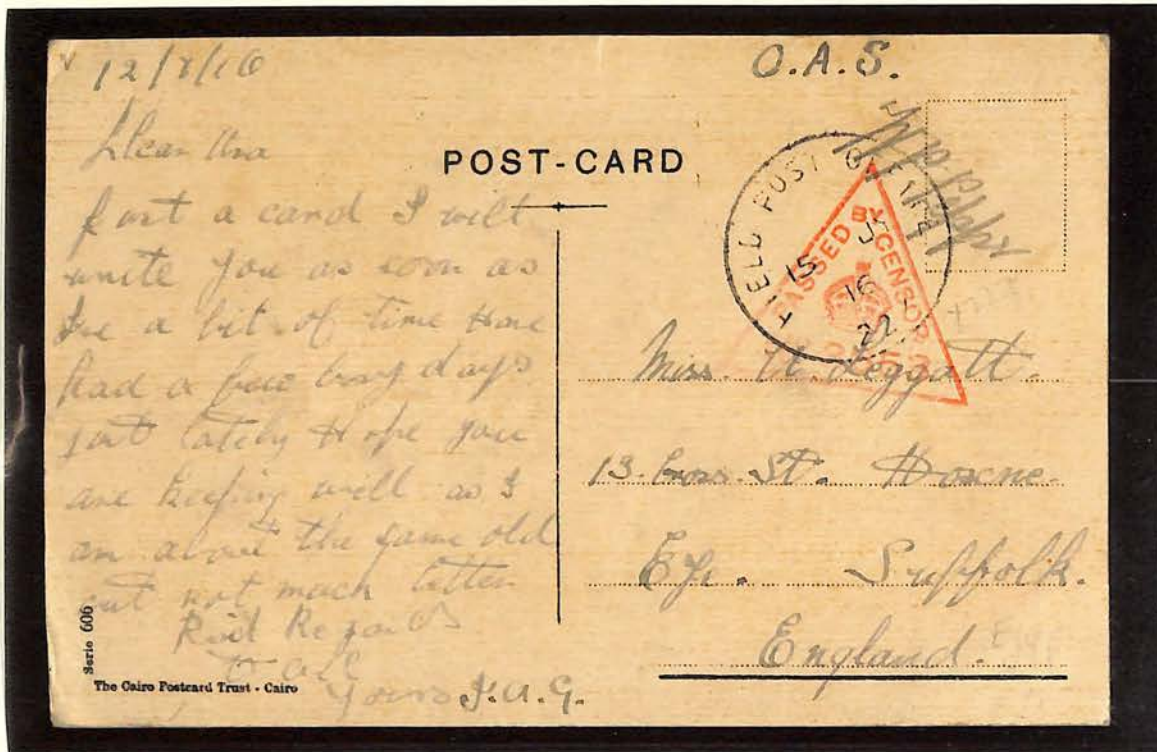
PALESTINE MANDATE

Military Mail – World War I

Army & Field Post Offices; Civilian Post Offices; and Censor Markings

Field Post Office 22Y (22nd Mounted Brigade – Western Frontier Force) – Faiyum

O.A.S. picture postcard sent to England on 15 July 1916 from FPO 22Y – Censor CM 3 #3653. 22nd Mounted Brigade originally was the North Midland Mounted Brigade.



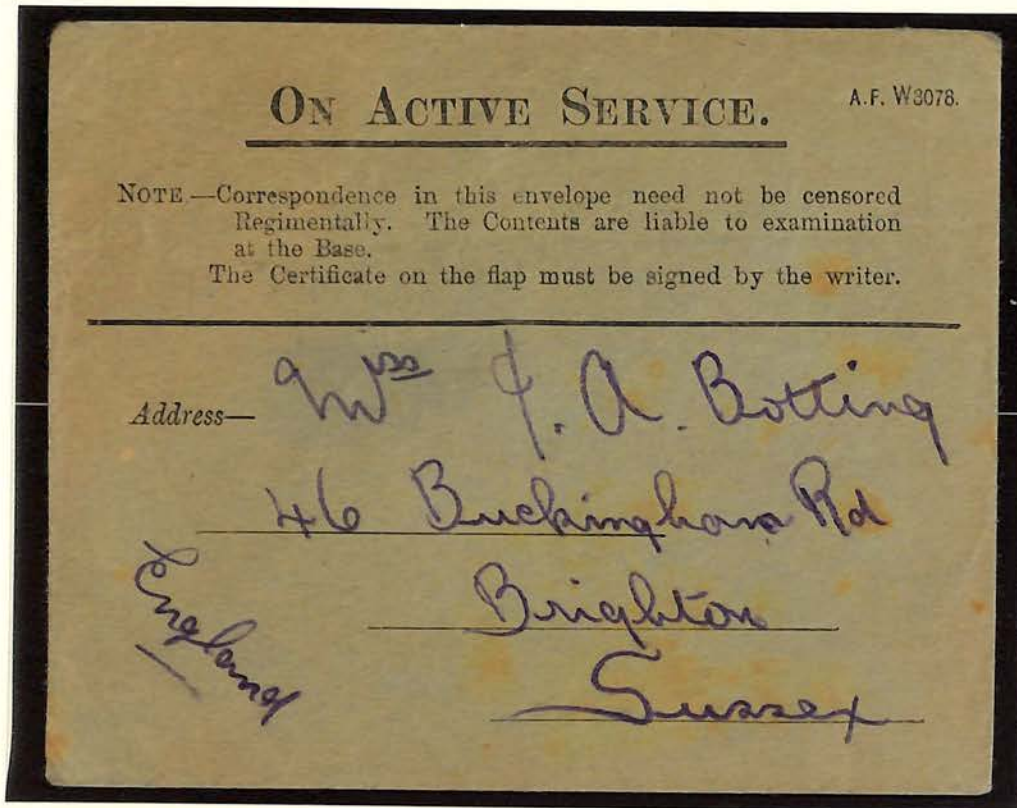
PALESTINE MANDATE

Military Mail – World War I

Army & Field Post Offices; Civilian Post Offices; and Censor Markings

FPO 40 – Egypt ~~Egypt~~ France

O.A.S. Letter sent to England on 17 June 1915 from 40 Brigade, 13 (Western) Division first day located in Egypt until 15 July 1915. Postmark is similar to that of the Indian Expeditionary Force which was listed as used by 2 Cavalry Divisions Headquarters in France. It was used by Indian 234 Brigade 13 June 1918 – 12 March 1921 in Egypt.



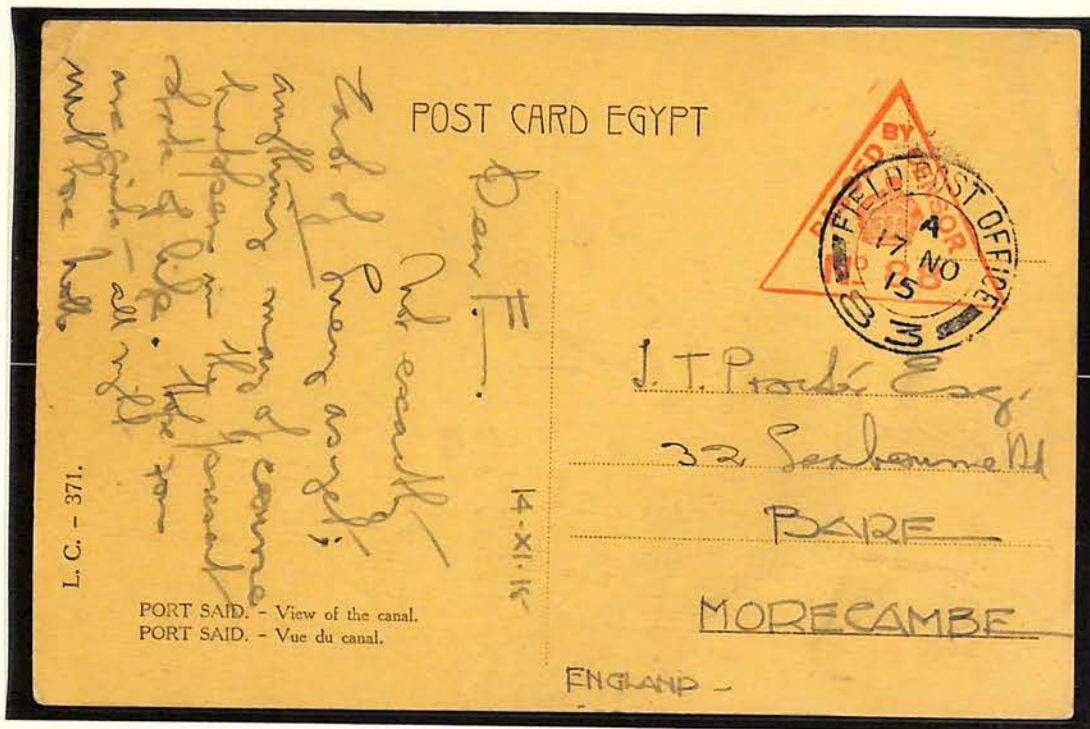
PALESTINE MANDATE

Military Mail - World War I

Army & Field Post Offices; Civilian Post Offices; and Censor Markings

FPO #83 - Alexandria - 83rd Brigade 28th Division

Picture Postcard sent to England on 17 November 1915 from FPO 83 in Alexandria. Censor CM 3 # 88



PALESTINE MANDATE

Military Mail – World War I

Army & Field Post Offices; Civilian Post Offices; and Censor Markings

Field Post Office 158 – Katia (b.el Romani)

Envelope sent to England on 5 September 1916 from FPO 158 which was deployed in the No.3 Section of the Suez Canal Defenses and was engaged in the Battle of Romani (4 August 1916). Censor CM 3 #3693



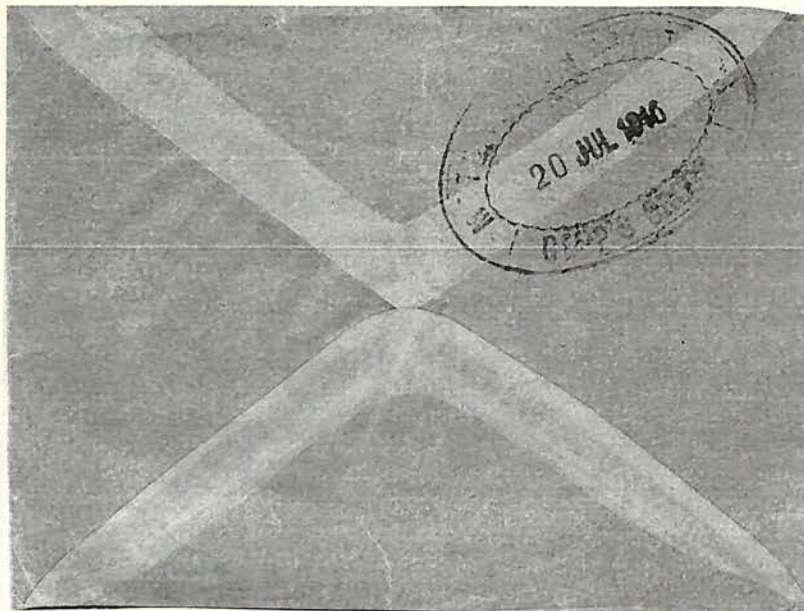
PALESTINE MANDATE

Military Mail - World War I

Army & Field Post Offices; Civilian Post Offices; and Censor Markings

Field Post Office 160 - Sidi Barrani

Letter sent to Gepps Cross, Australia on 1 June 1916 from Sidi Barrani, Egypt. Arrival postmark & Censor mark CM 3 # 3828.



PALESTINE MANDATE

Military Mail – World War I

Army & Field Post Offices; Civilian Post Offices; and Censor Markings

Field Post Office 179 (60th Division, 179th Brigade) – Alexandria

Letter sent to England on 4 February 1919 from FPO 179 – Serial A – Dumb mark DM 15 – Last day of use listed as 18 January 1919.



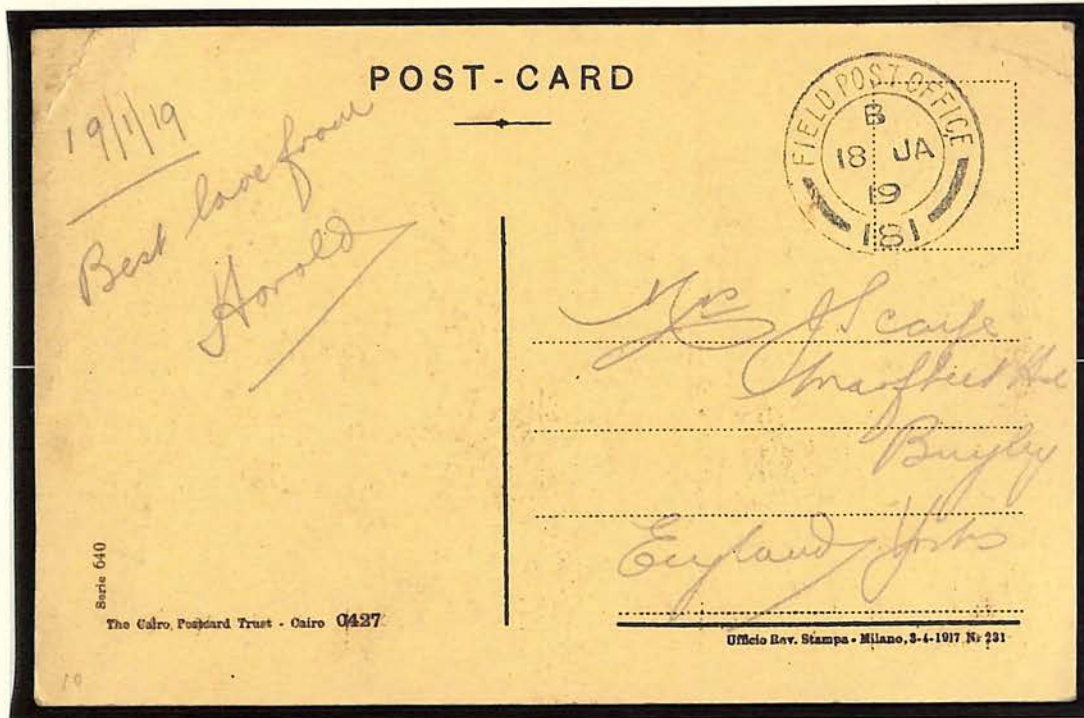
PALESTINE MANDATE

Military Mail – World War I

Army & Field Post Offices; Civilian Post Offices; and Censor Markings

Field Post Office 181 – Alexandria

Picture postcard sent to England on 18 January 1919 from FPO 181 – Serial B – no censor mark



PALESTINE MANDATE

Military Mail – World War I

Army & Field Post Offices; Civilian Post Offices; and Censor Markings

Field Post Office D.11 (11 Northern Division) – El Ferdan (Suez Canal Defense)

Honor envelope sent to Malta on 14 April 1916 from FPO D.11 – Headquarters Northern Division – in Egypt from 2 February 1916 to 3 July 1916 when it transferred to France

A.P.W. 5075. [Crown Copyright Reserved.]

ON ACTIVE SERVICE.

NOTE.—

Correspondence in this envelope need not be censored Regimentally. The Contents are liable to examination at the Base.

The following Certificate must be signed by the writer :

I certify on my honour, that the contents of this envelope refer to nothing but private and family matters.

Signature |
(Name only) |

M. Gatt

Address—

Miss M. Gatt

Flores College

Valletta - MALTA



FORWARDED BY CENSOR
 3478

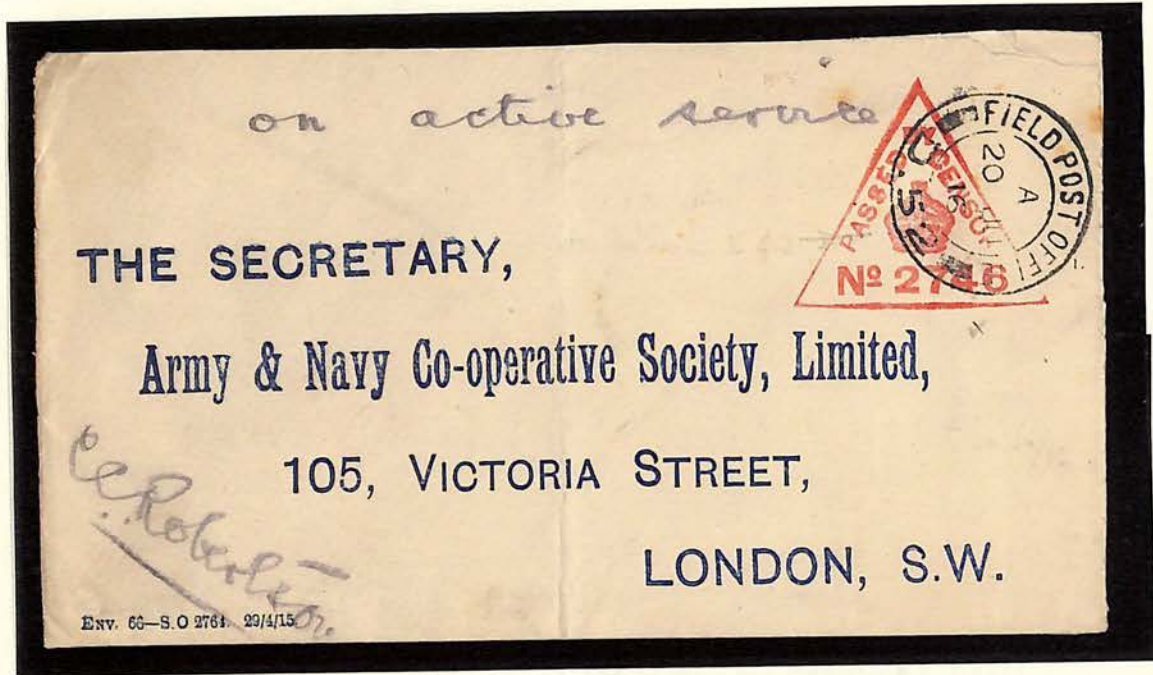
PALESTINE MANDATE

Military Mail - World War I

Army & Field Post Offices; Civilian Post Offices; and Censor Markings

Field Post Office D 52 - Romani - HQ Lowland Division

Letter sent to London on 20 June 1916 from Romani, Egypt. Censor signature, Censor Mark CM 3 # 2746



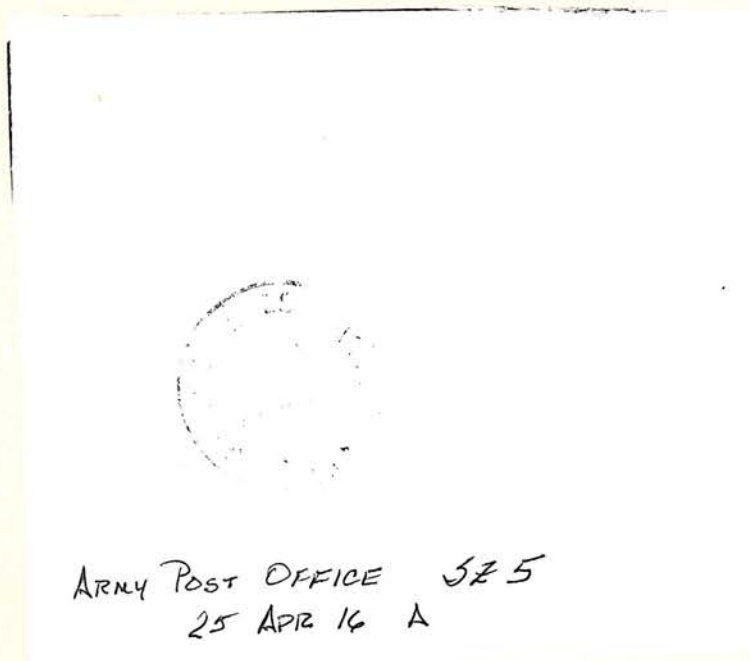
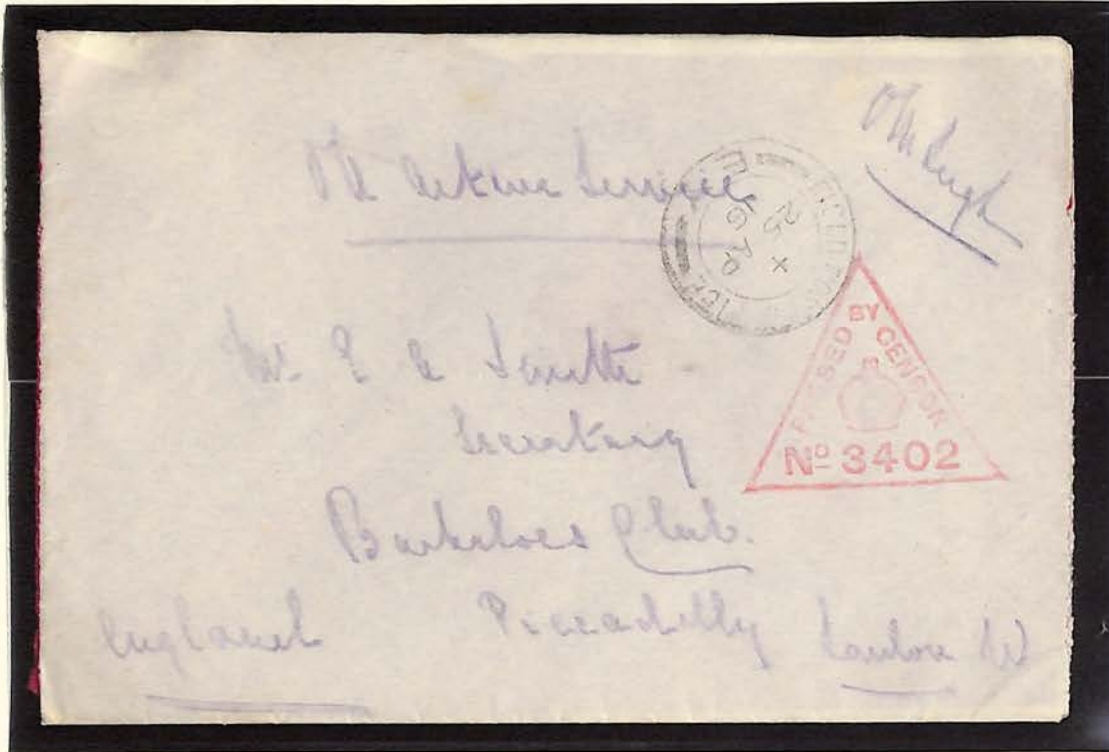
PALESTINE MANDATE

Military Mail – World War I

Army & Field Post Offices; Civilian Post Offices; and Censor Markings

Field Post Office EY – No. 1 Section – Suez Canal Defense

Letter sent to London on 25 April 1916 from FPO EY – Serial + - APO SZ 5 transit postmark – Censor CM 3 #3402. Unit designation – 3rd Dismounted Brigade attached to the 42nd Division



PALESTINE MANDATE

Military Mail - World War I

Army & Field Post Offices; Civilian Post Offices; and Censor Markings

Field Post Office F1 - El Arish - HQ Eastern Force

Letter sent to London on 11 February 1917 from El Arish. Censor signature, Censor mark CM 3 # 2794



PALESTINE MANDATE

Military Mail – World War I

Army & Field Post Offices; Civilian Post Offices; and Censor Markings

Field Post Office F 2 (Western Force) – Sidi Barrani

O.A.S. letter sent to Wales on 29 April 1917 from FPO F 2 – Censor CM 3 #3117 – was the Western Force Headquarters



PALESTINE MANDATE

Military Mail – World War I

Army & Field Post Offices; Civilian Post Offices; and Censor Markings

Field Post Office F2 – Abbassia

Letter sent to England on 19 February 1918 from FPO F2 – Serial 1 – O.A.S. Censor CM 3 #3104



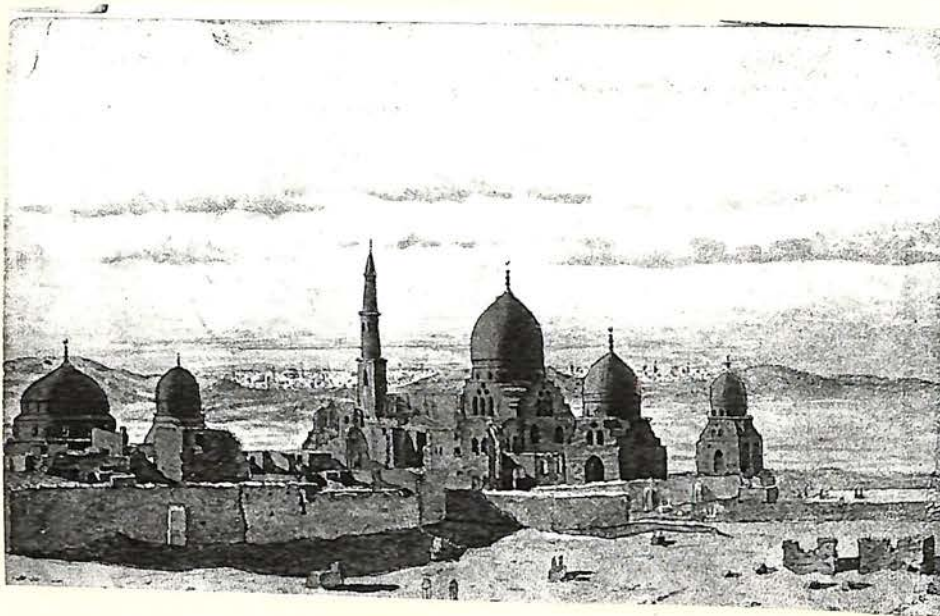
PALESTINE MANDATE

Military Mail – World War I

Army & Field Post Offices; Civilian Post Offices; and Censor Markings

Field Post Office GM (Mediterranean Expeditionary Forces) – Ismailia

Picture Postcard sent to England on 7 March 1916 from FPO GM – Serial B – Censor CM 3 #3078 – was merged with the Force in Egypt on 16 March 1916. This was General Headquarters of MEF



PALESTINE MANDATE

Military Mail - World War I

Army & Field Post Offices; Civilian Post Offices; and Censor Markings

Field Post Office GM - Deir el Belah - General HQ, EEF

Letter sent to Alexandria on 9 June 1917 from Deir el Belah. Arrival postmark, Censor signature, Censor mark CM 3 # 3865



30
PALESTINE MANDATE

Military Mail - World War I

Army & Field Post Offices; Civilian Post Offices; and Censor Markings

Field Post Office GM1 - Bir Salem

Letter sent from Bir Salem to Alexandria, as a forwarding base, on 2 June 1918 and postmarked GM1 was marked with Censor CM 3#3081. An honor signature sensor was also applied



304

Field Post Office " G M 1 "

General Hqrs. 1st Echelon
Egyptian Expeditionary Forces
Jerusalem

Feb. 22, 1919

This superb cover bears several strikes of the British F.P.O. "GM1" as well as the registered label. The reverse of the cover is marked with the same obliterator.



15
PALESTINE MANDATE

Military Mail – World War I

Army & Field Post Offices; Civilian Post Offices; and Censor Markings

Field Post Office GM2 – Cairo (General Headquarters 2nd Echelon)

Letter sent to Alexandria on 26 November 1917 from FPO GM2 – Serial Y – Censor CM 3 #4314 –
Arrival mark – civilian post office – Dumb Mark #7



PALESTINE MANDATE

Syn

Military Mail - World War I

Army & Field Post Offices; Civilian Post Offices; and Censor Markings

Field Post Office HM - Desert Mounted Corps

Registered Letter sent from Aleppo on 6 May 1919 to Alexandria



PALESTINE MANDATE

Military Mail - World War I

Army & Field Post Offices; Civilian Post Offices; and Censor Markings

Field Post Office SWY 2 - 2nd Southwestern Mounted Brigade, IX Corps

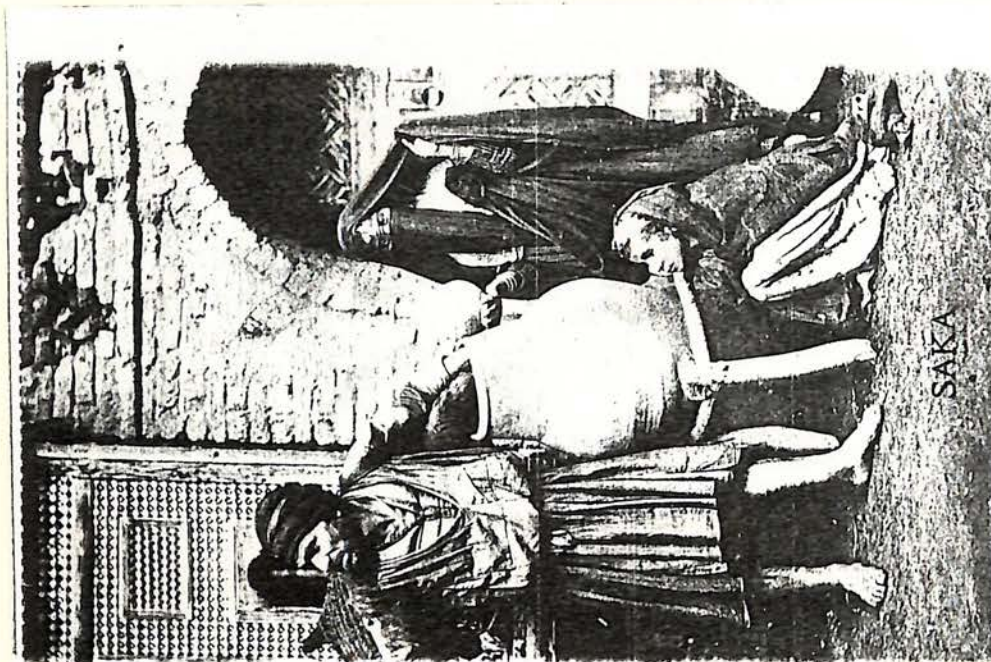
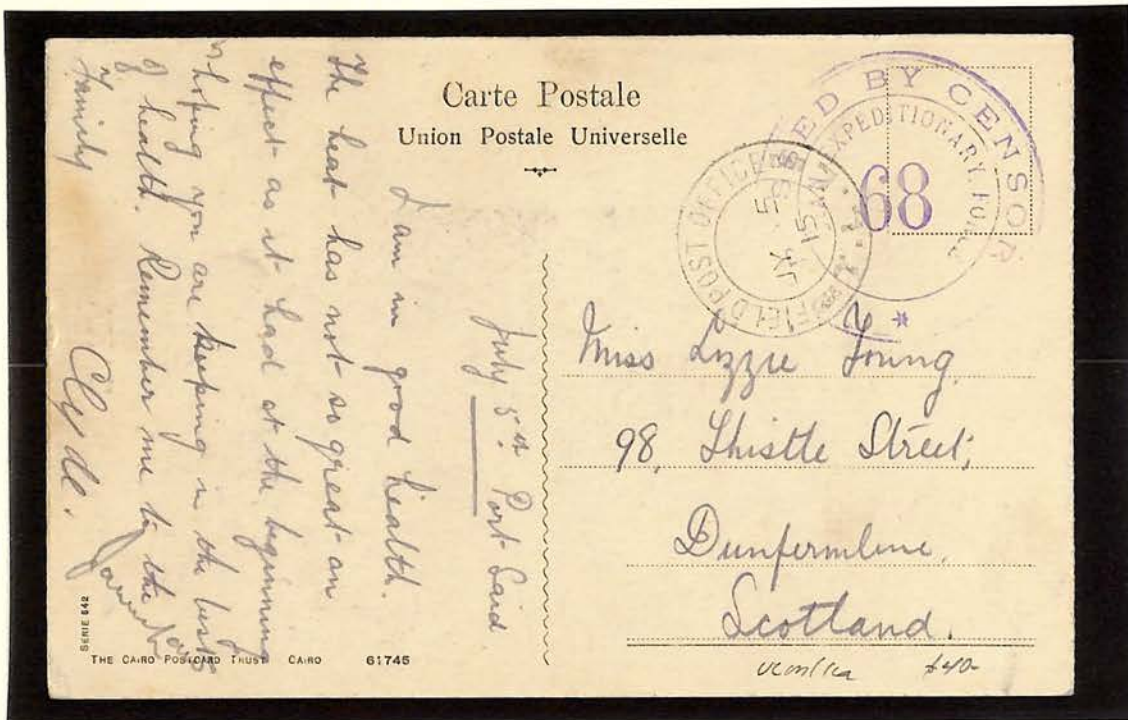
OAS Postcard sent from Alexandria on 15 January 16 (first day of canceller use) to Devon, England. No censor stamp.



EGYPTIAN EXPEDITIONARY FORCE

Military Mail-FPO TLL

Picture post card dated 5 July 1915 mailed from Egypt and addressed to Dunfermline, Scotland. The card is postmarked with the 52nd Lowland Division - Divisional Train Datestamp which was located in Egypt from 15 June 1915 until October 1915. This particular cancel was in use from 30 June until 13 July. On 14 October the train sailed for Salonika. The card carries an Indian Censor Handstamp # 68 Firebrace Type IEF1. It is listed as belonging to a New Zealand Infantry Brigade rather than the Scottish Division.



PALESTINE MANDATE

5/2/16

40

Military Mail – World War I

Army & Field Post Offices; Civilian Post Offices; and Censor Markings

Field Post Office W 1 (Western Frontier Force, Infantry Brigade) – Mersa Metruth

Letter sent to England on 24 March 1916 from FPO W 1 – Serial X – Censor CM 3 – became APO SZ 19 on 19 April 1916



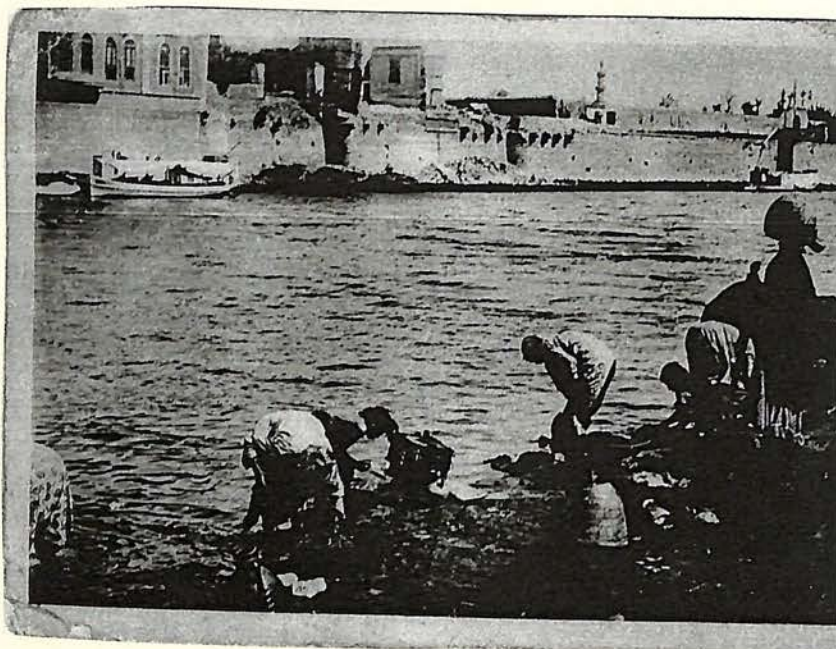
PALESTINE MANDATE

Military Mail - World War I

Army & Field Post Offices; Civilian Post Offices; and Censor Markings

Field Post Office W.B.Y. - Rene Salama, Cairo - Welsh Border Mounted Brigade

Picture postcard sent from Cairo on 28 March 1916 to 20th Battalion, Kings Liverpool Regiment, B.E.F. in Europe. Censor CM 3 #3762



PALESTINE MANDATE

Military Mail - World War I

Army & Field Post Offices; Civilian Post Offices; and Censor Markings

Field Post Office 'LY' - Port Said - 1/1 Lowland Mounted Brigade

Picture Postcard sent to Scotland on 10 May 1916 from Port Said. Censors signature & Censor 3 # 3051

