

17081



17048



17081



17080



17080



17079



17080



17078



17020



17079

17078



17020

17078



17080

17081

17018

17078

17071



17079



17081



17083



17018



17018



17029



17017



17017



17079



15334



16556



15437



15456



16561



16561



15456



16556

16556





15358

16556

16556



16556

16556



15358

16556

16556

F 15375



15334



16556



16556



15456

15359



15627



15358

15437



F 16560



F 16556



F 15456



16560



F 16556



F 16556



16556

F 15456



15384

F 15437



16829



8789



16848



16838







426







8C  
Plate #  
offset  
16360



16332



16402



14439



16391



16332



16332



16393



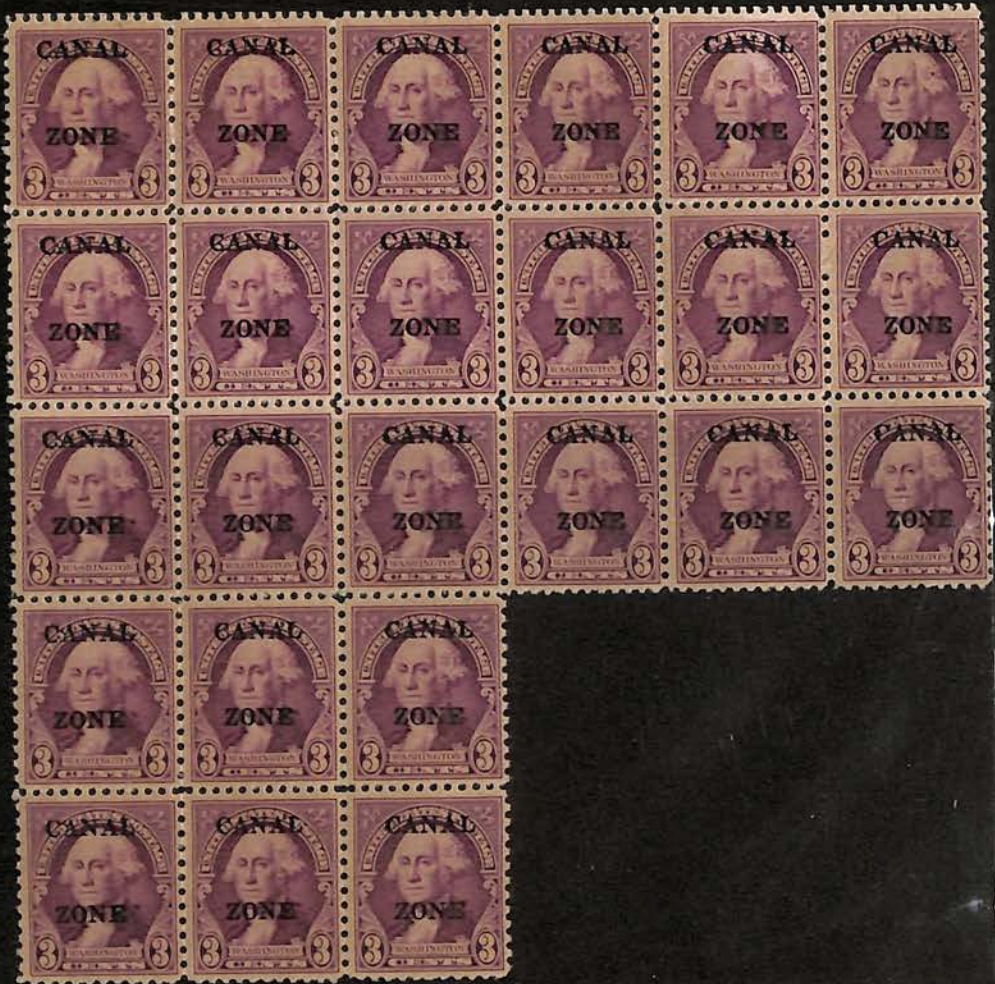
26391







93  
 minor BT LR stamp  
 perforated + one  
 use as example - from DC  
 and article in Bulletin















92  
 bak 2 at LL  
 on US stamp  
 bak 2 at UR, LR  
 on US stamp  
 bak 1 in CANAL  
 at LL



