

South Africa



1928 May 11, 3d international letter, Johannesburg to St. Paul, Minnesota, enclosure
Three 1d, typographed Pretoria pictorial issue



1929 Feb 8, 2d international letter, Johannesburg to Fairfield, Iowa, postage due 4c
Two 1d, typographed Pretoria pictorial issue

South Africa



1929 May 14, 3d international letter, Umkomaas, Natal to Ironwood, Michigan
Three 1d, typographed Pretoria pictorial issue



1929 Aug 18, 3d international letter, Ermelo, Transvaal to Chicago
Three 1d, typographed Pretoria pictorial issue

South Africa

The Postmaster
Post Office Savings Bank
By the Rd.
Kensington W. 14.
London.

England.

P HILLBROW
JOHANNESBURG
No. 2309

BY AIR MAIL
PER LUGGOS
PAR AVION



1931 Mar 27, 3d international letter, Brocklands to Aurora, Illinois
Four 1/2d, typographed Pretoria pictorial, 1d unhyphenated issue

South Africa



1933 Mar 1, 3/4 international air mail registered letter, Hillbrow to London
Three 1/-, unhyphenated issue, plate I, one 4d unhyphenated issue, plate I



1934 Jun 23, 3d international letter, Capetown to Minneapolis, Minnesota
Three 1d, unhyphenated issue, group 2

South Africa



1934 Nov 28, 3d international letter, Marseillies to Princeton, New Jersey, paquebot
Three 1d, 1st hyphenated issue, 18 ½ x 22 ½ unscreened

South Africa



1935 Apr 26, 8d international airmail letter, Weston Station to Mount Silander, Southern Rhodesia, rec'd May 4
Two 1d, unhyphenated issue, group 1, plate 1-6, two 3d 2nd hyphenated issue, all screened



1935 Jul 10, 2½d international letter, Port Elizabeth to Milwaukee, Wisconsin, postage due 2c
Two 1d, 1st hyphenated issue, ½d 2nd hyphenated issue, one 2c US postage due

South Africa

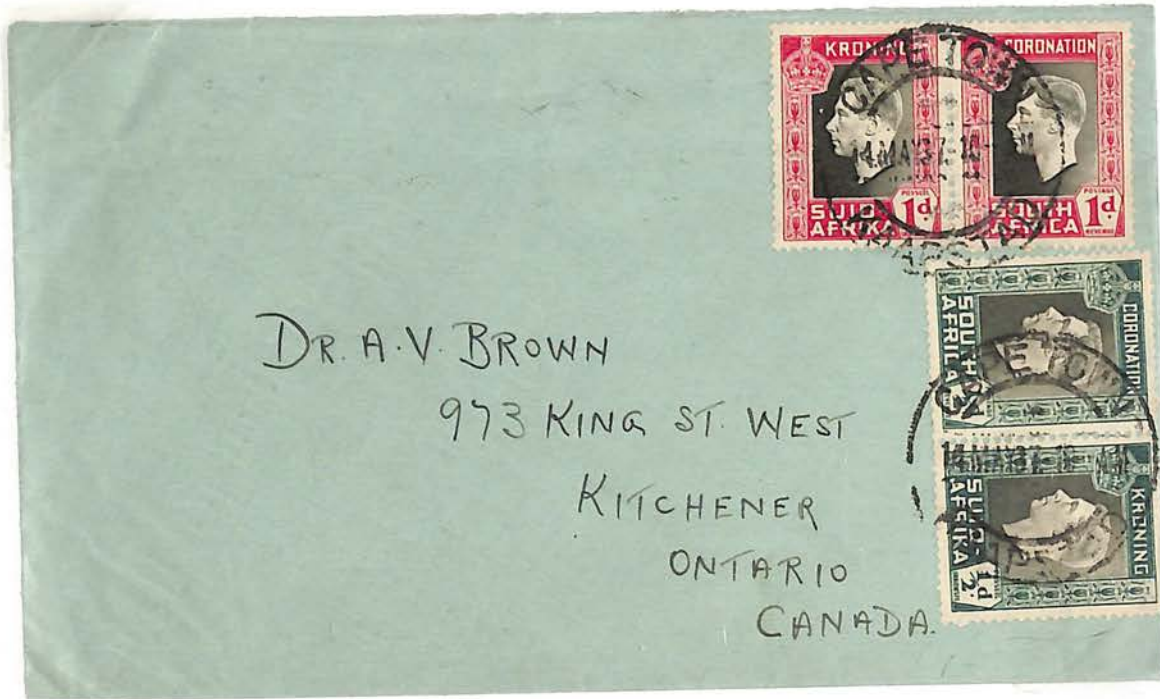


1936 Mar 17, 2d international letter, Pretoria to New York, postage due 4c
Two 1d, 1st hyphenated issue, 18 ½ x 22 ½ unscreened, two 2c US postage due



1936 Nov 11, 2d domestic letter, Johannesburg local, JIREX cancel
Two 1d, overprinted JIREX mini-pane

South Africa



1937 May 14 3d international letter, Capetown to Kitchener, Ontario, Canada, received 9 Jun
Two ½d and two 1d 1937 Coronation issue, 1d uncommon cylinder 55



1937 July 2, 11d international air mail letter, Johannesburg to Vienna, Austria
Transit July 9, Flugpost Wien July 10, Telegraphenamts Wien July 10, received July 10
1937 Coronation issue, 1d pair common cylinder 30A, 1½d and 3d pairs

South Africa



1937 May 18 3/- international registered air mail letter, Johannesburg to London
Pairs of 1/2d, 1d, 1 1/2d 3d and 1/- 1937 Coronation issue, 1d common cylinder 30A

South Africa

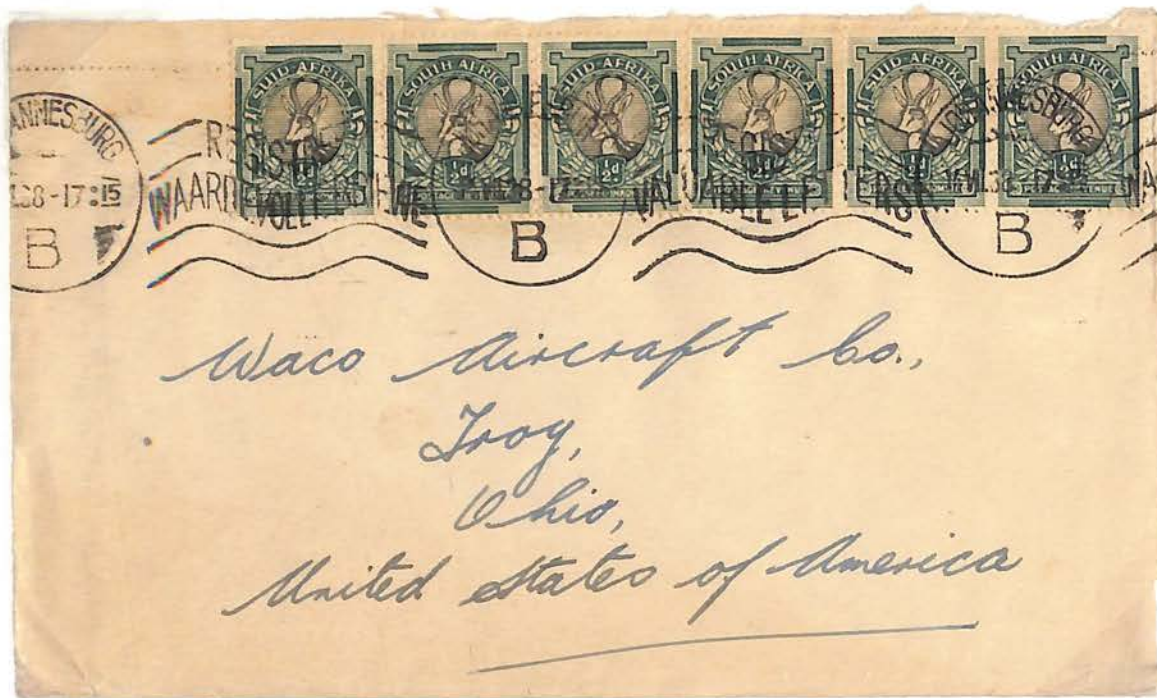


1938 Jan 10, 3d international letter, Mtubatuba, Natal to Minneapolis, Minnesota
Three 1d, 1st hyphenated issue, 18 ½ x 22 ½ unscreened



1938 Mar 15, 3d international letter, Durban to Minneapolis, Minnesota
Three 1d, 1st hyphenated issue, 18 ½ x 22 ½ unscreened

South Africa



1938 Jul 14, 3d international letter, Johannesburg to Troy, Ohio
Six 1/2d, 2nd hyphenated issue



1938 Sep 28, 3d international letter, Bloemfontein to San Francisco
Two 1 1/2d, 1st hyphenated issue, large format, dull gold and bluish slate

South Africa

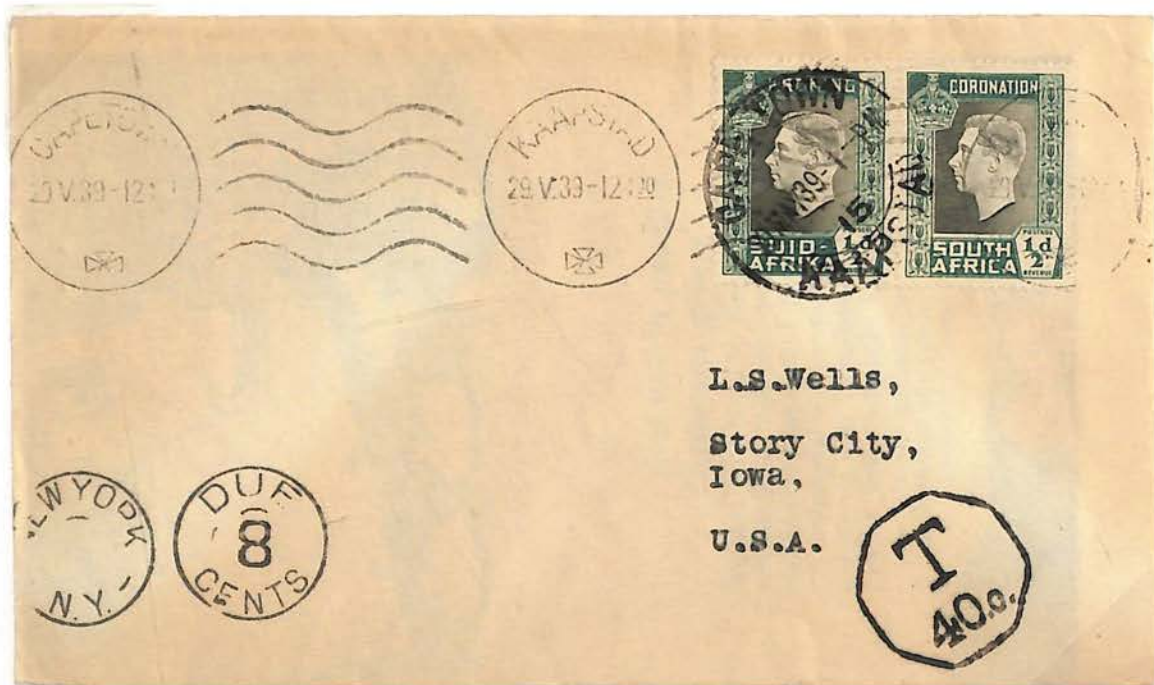


1938 Dec 14, 1/- international registered letter, **Simonstown to Lagos, Nigeria**, received 1939 Jan 4, Lagos
Pair of 1/2d, 1d, 1 1/2d and 3d Second Voortrekker Centenary Memorial Fund, First Day of Issue

South Africa



1938 Dec 14, 5d international letter, Eshowe to Ringwood, England
Pair of 1d and 1½d Second Voortrekker Issue, First Day of Issue



1939 May 29 1d international letter, Capetown to Story City, Iowa, via Montevideo Maru, postage due
Two ½d 1937 Coronation issue, postage due 8c

South Africa



1939 Aug 27, 1/- international air mail letter, Pretoria to Zaandam, Netherlands

Pairs of 1/2d, 1d, 1 1/2d Huguénot Commemorative Fund, pair 1/2d 3rd hyphenated issue 18 1/2 x 22 1/4, pair 1d 1st hyphenated issue 18 1/2 x 22 1/2, 3d unhyphenated issue, Group 1, plate III or IV



1939 Nov 22, 3d international letter, Potchefstroom, Transvaal to Baltimore, Maryland, censored

Three 1d, 1st hyphenated issue, 18 1/2 x 22 1/2 unscreened

South Africa



1940 May 2, 3d international letter, Johannesburg to West Hartford, Connecticut
Three 1d, 1st hyphenated issue, 18 ½ x 22 ½ unscreened



1940 Jul 26, 3d international letter, Johannesburg to Attleboro, Massachusetts, censored
Three 1d, 1st hyphenated issue, 18 ½ x 22 ½ unscreened

South Africa



1940 Oct 24, 3d international letter, Seekus to Surrey, England, received Nov 4
Three 1d, 1st hyphenated issue, 18 ½ x 22 ½ unscreened

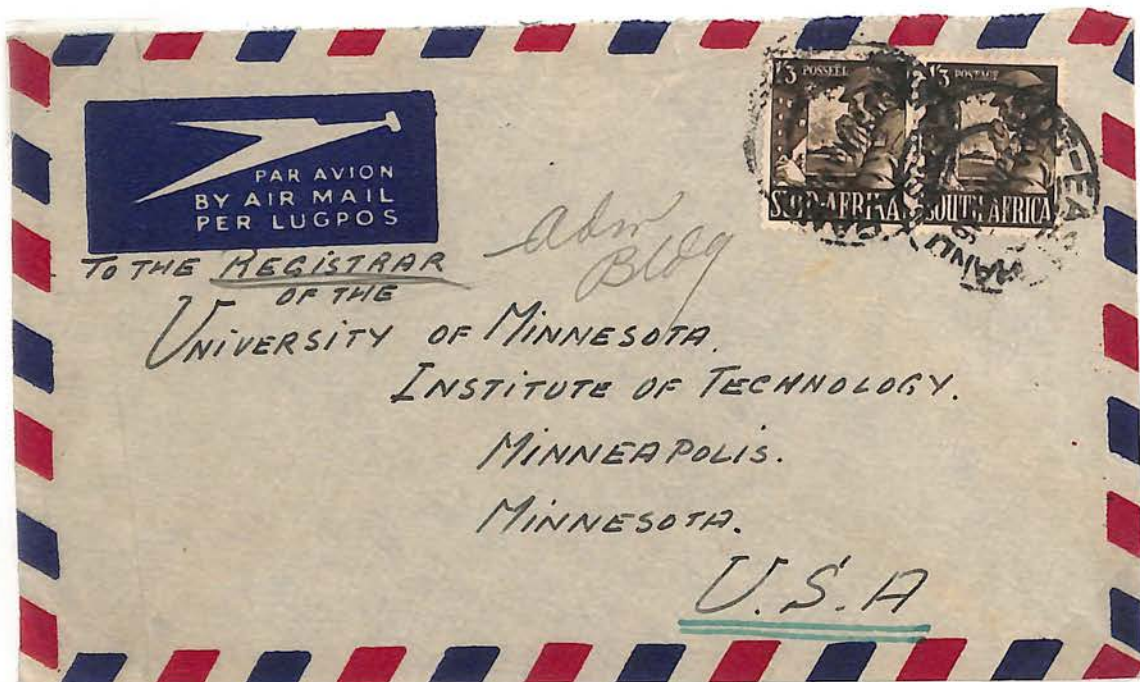


1941 Mar 14, 3d international letter, Durban to New York, censored
Six ½d, 2nd hyphenated issue

South Africa



1941 Mar 29, 3d international letter, Mapumulo, Natal to Minneapolis, Minnesota, censored, rec'd May 6
Two 1½d, 1st hyphenated issue, large format, gold and slate green



1941 Jun 29, 2/6 international air mail letter, East Rand to Minneapolis, Minnesota
Two 1/3 Large War Effort air mail, olive brown

South Africa

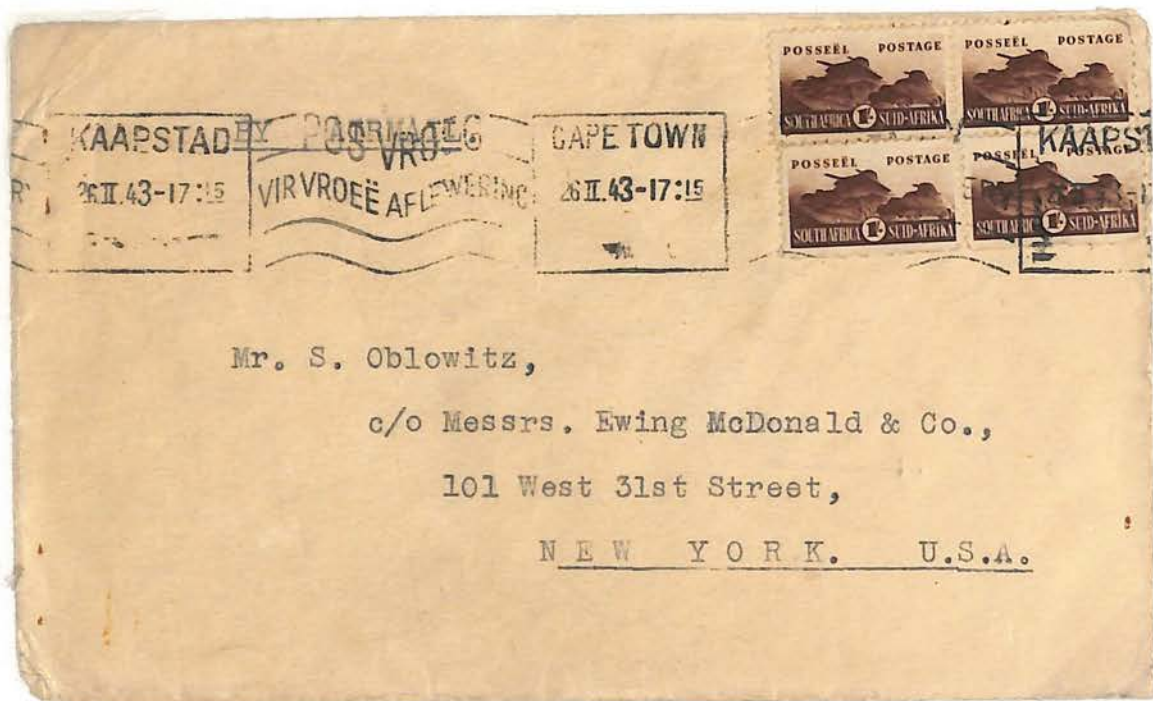


1942 Mar 4, 3d international letter, Johannesburg to Minneapolis, Minnesota censored
Two 1½d Large War Effort, deep myrtle



1942 May 8, 3d international letter, Pietermaritzburg to El Monte, California not censored
Two 1½d Large War Effort, deep myrtle

South Africa



1943 Feb 26, 4/- international air mail letter, Capetown to New York
Bantam War Effort: Four 1/- brown

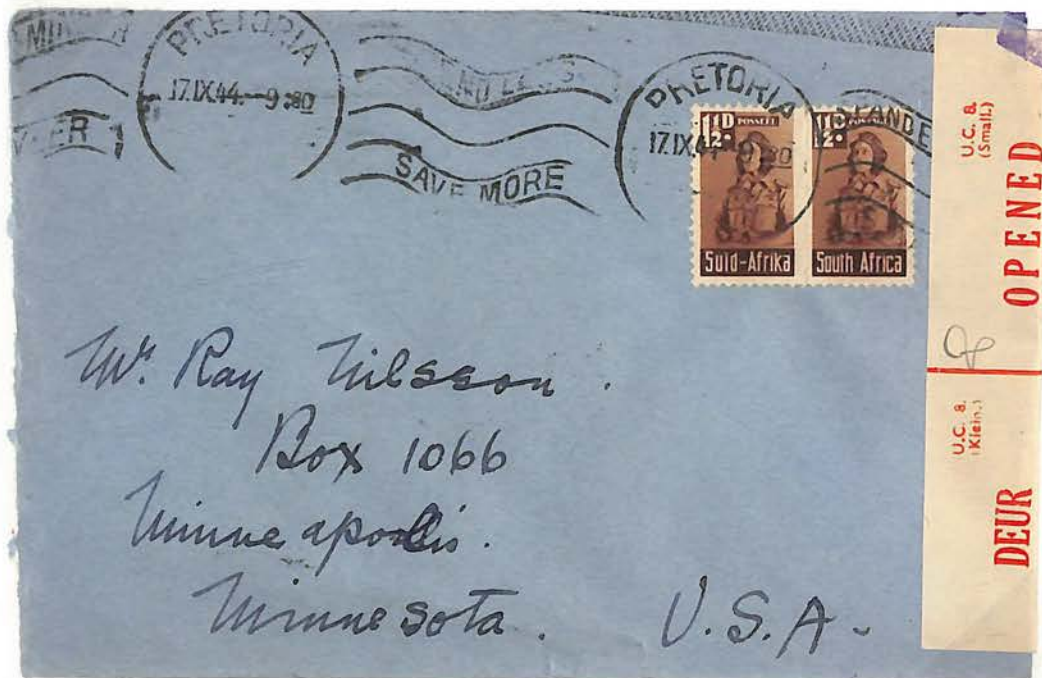


1943 Apr 12, 8½d international registered letter, Capetown to Waterloo, Iowa censored
Bantam War Effort: Three ½d printing II, two 1½d printing I, single roulette, two 2d printing II

South Africa



1943 Nov 14, 2/6 international air mail letter, Potchefstroom to New Brunswick, New Jersey
Two 1/3 Large War Effort air mail, olive brown

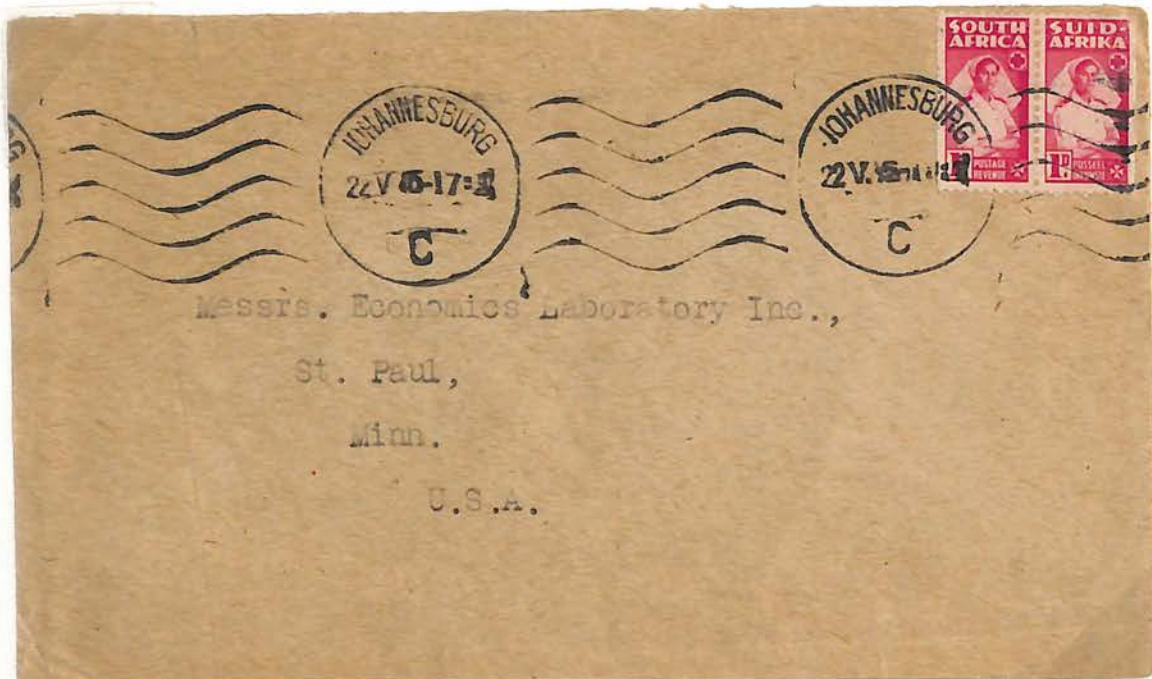


1944 Sep 17, 3d international letter, Pretoria to Minneapolis, Minnesota, censored
Bantam War Effort: Two 1½d double roulette

South Africa



1944 Nov 4, 3d international letter, Capetown to Brooklyn, New York, censored
Two 1½d, hyphenated issue, medium format, Group 2, Plate V, coarse screen



1945 May 22, 2d international letter, Johannesburg to St. Paul, Minnesota
Bantam War Effort: Two 1d printing II-IV, coarse screen

South Africa



1945 Jul 14, 3/6 international air mail letter, Johannesburg to Rockford, Illinois, censored
Bantam War Effort: Two 6d, Large War Effort: two 1/3 airmail dark sepia

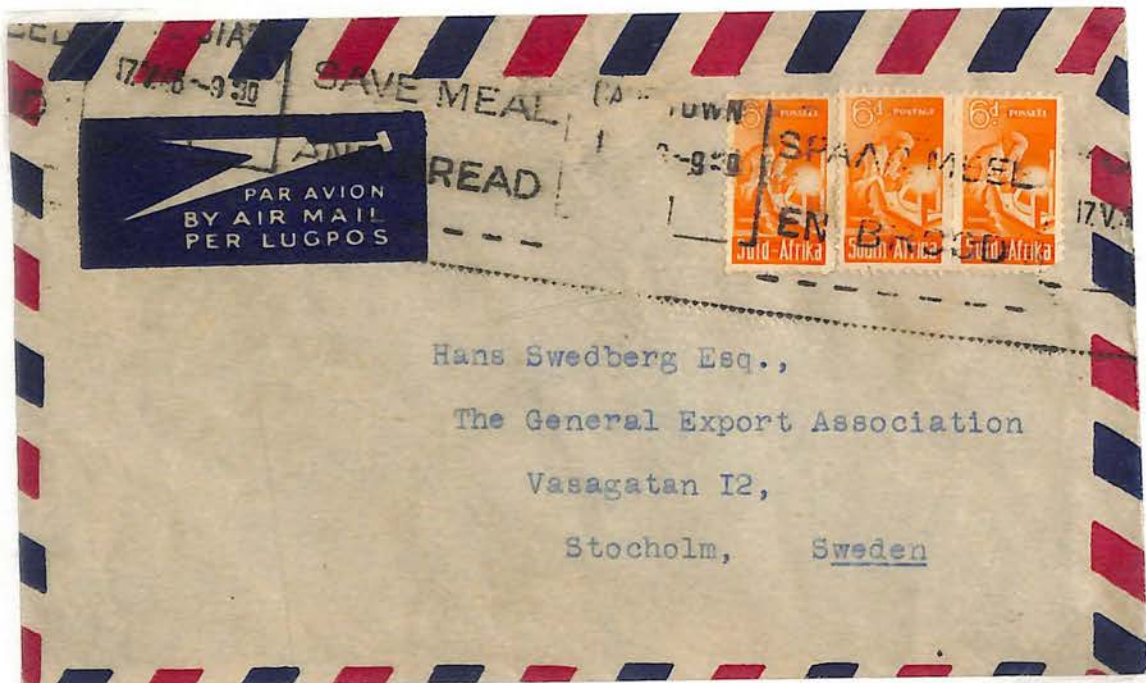


1945 Jul 31, 2d local letter, Bloemfontein to East London
Two 1d 1945 Victory Issue

South Africa

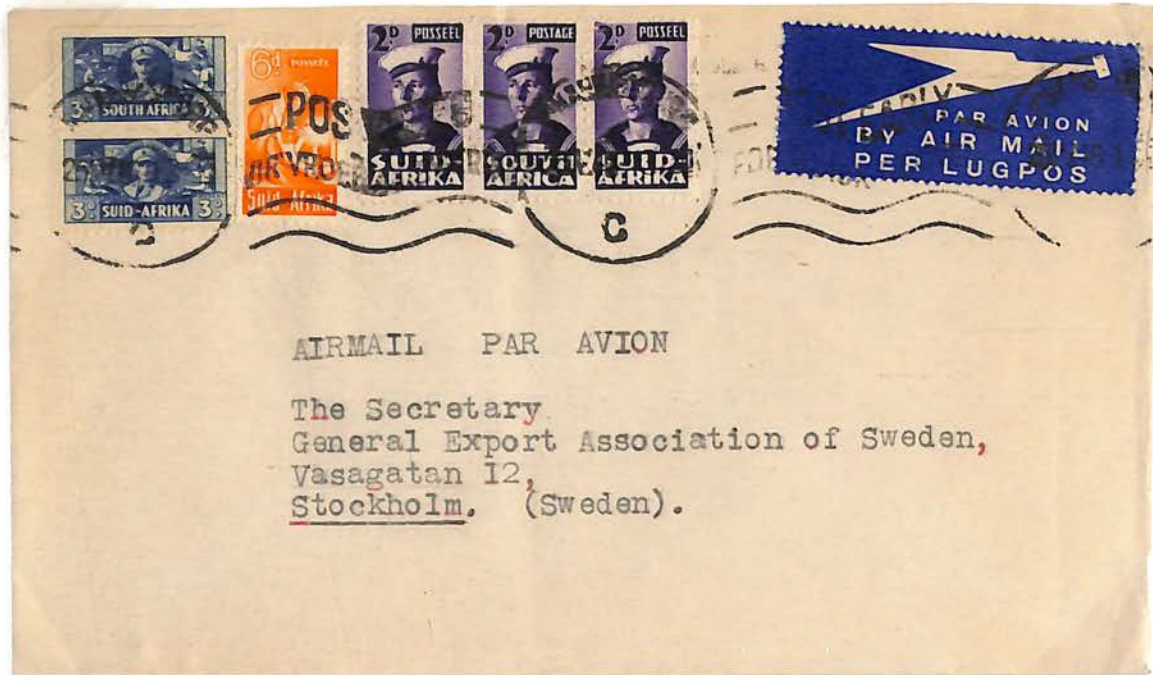


1945 Aug 3, 3d international letter, Ladismith to Minneapolis, Minnesota
Bantam War Effort: Three 1d printing I, fine screen



1946 May 17, 1/6 international air mail letter, Capetown to Stockholm
Bantam War Effort: Three 6d

South Africa



1946 May 25, 1/6 international air mail letter, **Johannesburg to Stockholm**
Bantam War Effort: Three 2d printing III-V coarse screen, two 3d printing II or III, blue, One 6d



1946 Aug 30, 3d international letter, **Johannesburg to Minneapolis, Minnesota**
Three 1d, 1943 roll stamp (coil) deep red

South Africa

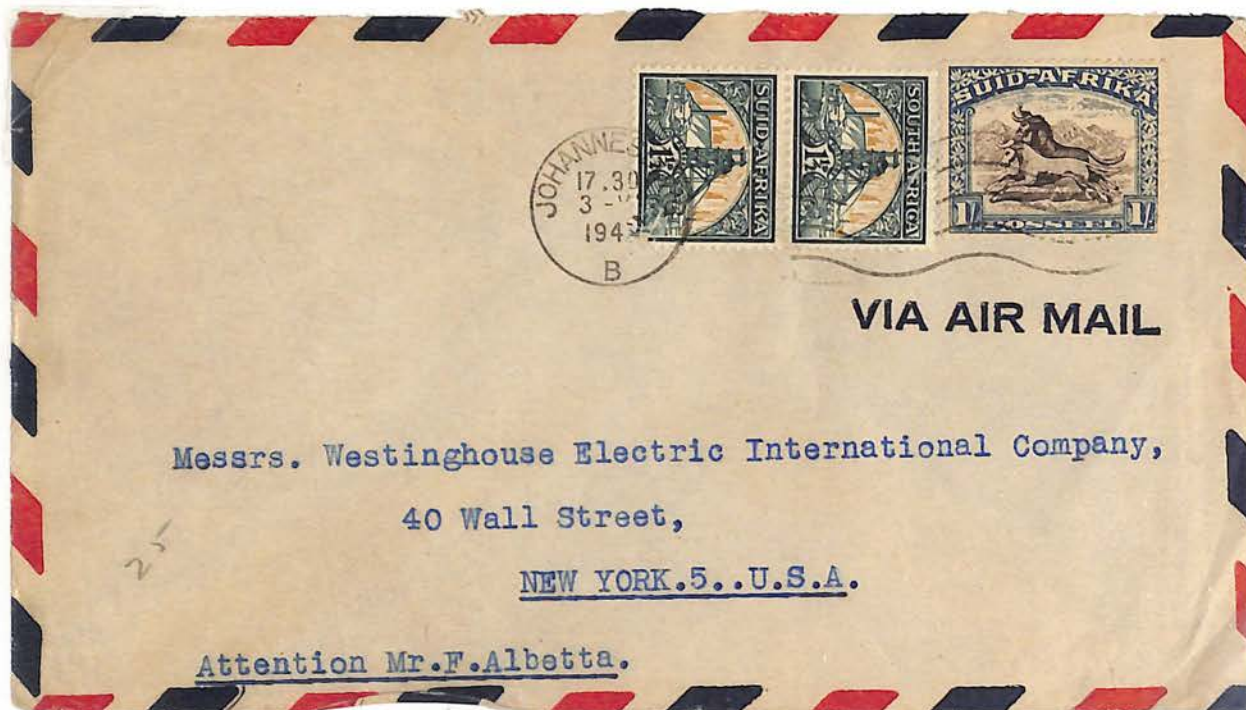


1947 Feb 17, 1/- international registered letter, Pretoria to Minneapolis, Minnesota received 3 Apr
Pairs of 1d, 2, and 3d 1947 Royal Visit issue, First Day of Issue, 2d cylinder 39, English first Pretoria special cancel



1947 Mar 18, 1/- local letter, Pietermaritzburg to Pretoria
Pairs of 1d, 2, and 3d 1947 Royal Visit issue

South Africa



1947 Jun 3, 1/3 international air mail letter, Johannesburg to New York
One 1/-, 3rd hyphenated issue, Group 4, chocolate and pale blue, two 1½d, hyphenated issue, Group II, medium format

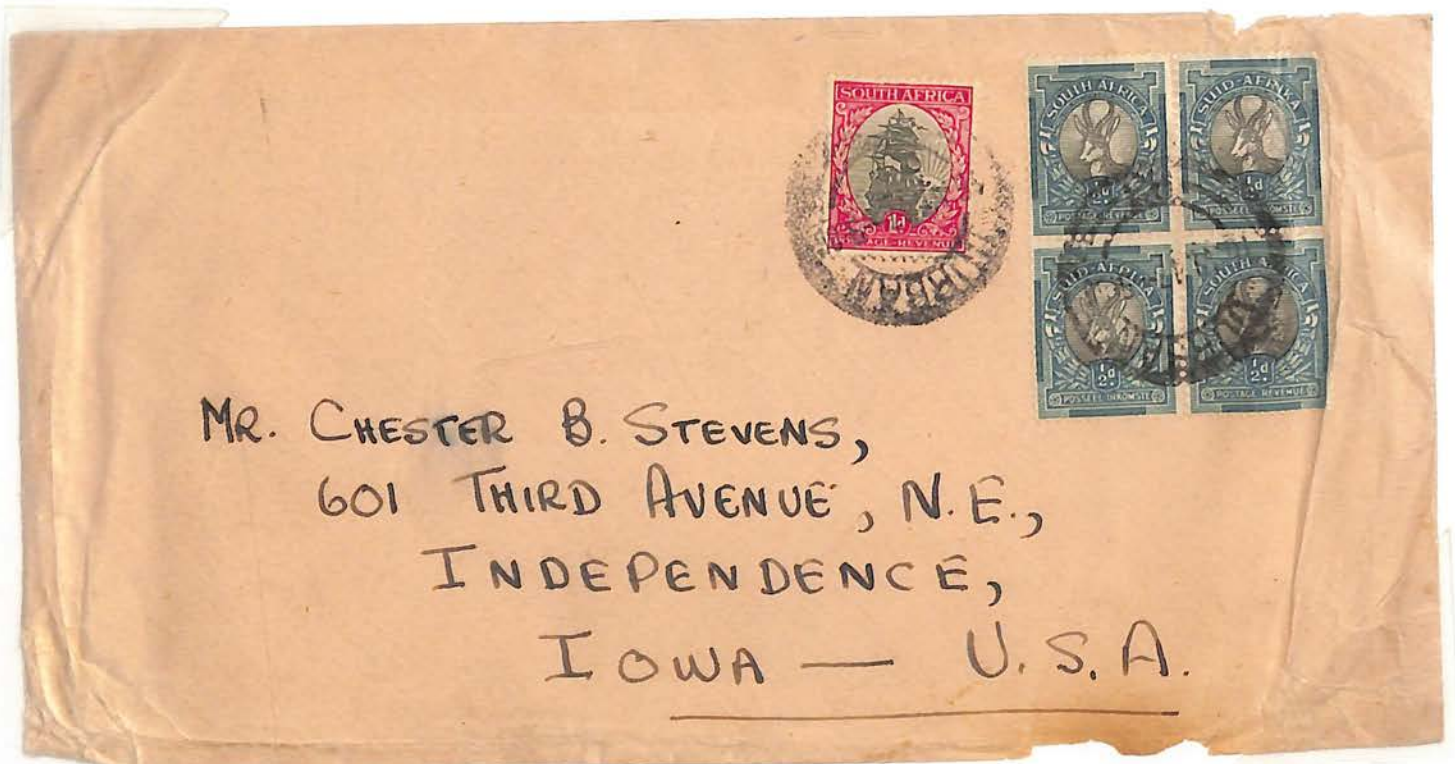


1947 Jun 10, 2/6 international air mail letter, Johannesburg to Madison, Wisconsin
Bantam War Effort: Two 3d printing II or III, blue, Four 6d 4th hyphenated issue, 18x22 all screened

South Africa



1947 Jul 3, 1/3 international air mail letter, Capetown to Boston, Massachusetts
One 3d 1947 Royal Visit issue, pair 6d 4th hyphenated issue 18x22, all screened



1947 Jul 16, 3d international letter, Durban to Independence, Iowa
Four 1/2d, 2nd hyphenated issue, one 1d 3rd hyphenated series, dimple in "O" of "SOUTH"