

DANMARK

96 rigsbankskilling = 1 rigsdaler

1851/63

Kobbertryk bundtryk — Burelage recess-printed

1851



chokoladebrun - chocolate-brown

1851



blå - blue

Punkteret udfyldning, Vm. lille krone, Utakket — Dotted spandrels, Wmk. Small Crown, Imperforated

1855



blå - blue

1854



brun - brown

1857



grøn - green

1857



gråviolet - grey-violet

Punkteret udfyldning — Dotted spandrels
Vm. stor krone, Gennemstukken — Wmk. Large Crown, Rouletted

Linieret udfyldning — Wavy lines in spandrels
Vm. stor krone, Gennemstukken — Wmk. Large Crown, Rouletted

1863



rosalilla - red-lilac



1863



brun - brown

Linieret udfyldning — Wavy lines in spandrels
Vm. lille krone, Utakket — Wmk. Small Crown, Imperforated

1858



brun - brown

1858



grøn - green

DANMARK

1852/62

Bogtryk bundtryk — Burelage in typography

1852



radbrun - red-brown

1853



sortbrun - black-brown

1853



mark radbrun - dark red-brown

1854



brun - brown

1854



gulbrun - yellow-brown

1854



gråbrun - grey-brown

1854



olivenbrun - olive-brown

1854



kastanjebrun - chestnut

1852



blå - blue

1854



nøddebrun - nut brown

Linieret udfyldning — Wavy lines in spandrels
 Vm. stor krone, Utakket — Wmk. Large Crown, Imperforated

1862



brun - brown

DANMARK

1864/71

Takning 14 × 13½ Perforated

1871



grå / blå - grey / blue

1871



grå / lilla - grey / lilac

1870



grå / rød - grey / red

1871



grå / brun - grey / brown

1871



grå / grøn - grey / green

1870

Takning 12½ Perforated



brun / lilla - brown / lilac

Takning 13 × 12½ Perforated

1865



blå - blue

1865



lilla - lilac

1864



rød - red

1868



gulbrun - yellow-brown

1864



oliven - olive

DANMARK

100 øre = 1 krone

1875/1915

Takning 12 3/4 Perforated



1902

1902

1901

Provisorium - Provisional
1904

orange

grå/lila - grey-lilac

brun - brown

brun - brown

Takning 14 x 13 1/2 Perforated



1882
Små hjørnetal - Small figures

1884
Store hjørnetal - Large figures

1885

1882
Små hjørnetal - Small figures

1884
Store hjørnetal - Large figures

grøn - green

grøn - green

rod - red

blå - blue

blå - blue

Takning 14 x 13 1/2 Perforated



1875

1875

1879

1875

1875

blå / grå - blue / grey

grå / blå - grey / blue

rod / blå - red / blue

grå / rod - grey / red

grå / violet - grey / violet

1875

1875

1875

1875

1877

grå / brun - grey / brown

rod / grå - red / grey

grå / grøn - grey / green

brun / lila - brown / lilac

grå / gul - grey / yellow

Provisorier - Provisionals



1904

1912

1912

1915

Vm. ny krone - Wmk. New Crown

grå / rod - grey / red

grå / brun - grey / brown

rod / grå - red / grey

grå/rod/lila - grey / red-lilac

DANMARK

1875/ 1912

Takning 14 × 13½ Perforated

1875



ultramarin / grå - ultramarine / grey

1875



blågrå / grå - blue-grey / grey

1875



grå ultramarin - grey / ultramarine

1875



lysgrå / rød - pale grey / carmine

1886



grå / anilrød - grey / aniline-red

1875



grå / rød - grey / red

1875



brun / blåviolet - brown / blue-violet

Takning 12¾, Vm. stor krone - Perforated 12¾, Wmk. Large Crown

1895



blå / grå - blue / grey

1895



grå / blå - grey / blue

1895



grå / rød - grey / red

1896



grå / rødilla - grey / red-lilac

1895



grå / brun - grey / brown

1898



grå / grøn - grey / green

1897



brun / lilla - brown / lilac

1895



grå / gul - grey / yellow

Provisorium - Provisional
1912



grå / rød - grey / red

DANMARK

Takning 12 3/4 , Vm. ny krone – Perforated 12 3/4 , Wmk. New Crown

1902



blå / grå – blue / grey

1903



grå / blå – grey / blue

1886 / 1903

1886 / 1903

1902



grå / rød – grey / red

1903



grå / grøn – grey / green

1903



brun / lilla – brown / lilac

1903



grå / gul – grey / yellow

Takning 12 3/4 , Vm. ny krone – Perforated 12 3/4 , Wmk. New Crown

1902



grøn – green

1902



rød – red

1902



blå – blue

Takning 12 3/4 , Vm. stor krone – Perforated 12 3/4 , Wmk. Large Crown

1895



grøn – green

1895



rød – red

1895



blå – blue

Takning 14 x 13 1/2 Perforated

1886



anilinsrosa – aniline-rose

DANMARK

Bogtryk, glat baggrund — Printed in typography with solid background

1905/17

Dagligserie „Bolgelinie“ — Definitive series “Wavy Lines”
 Vm. ny krone — Wmk. New Crown

Takning 12 ¾ Perforated

1905



orange

1905



rod - red

1905



grå - grey

1905



blå - blue

1912



markgrøn - dark green

1912



karmirosa - carmine-rose

1905



brunlilla - brown-lilac

1912



markblå - deep blue

1912



sortblå - black-blue

Takning 14 x 14 ½ Perforated

1917



rod - red

1917



blå - blue

DANMARK

1913/30

Dagligserie „Belgeline“ — Definitive series "Wavy Lines"
Vm. kors — Wmk. Multiple Crosses

Takning 14 × 14½ Perforated

1914



orange

1913 – Type I



rod – red

1927 – Type II



rod – red

1913



grå – grey

1919



perlegrå – Pearl grey

1913



blå – blue

1921



brun – brown

1930



lysgrün – light green

1926



lysgrün – light green

1930



violet

1921



grå – grey

1921



grøn – green

1930



brun – brown

1930



radbrun – red-brown

1926



violet

Provisorier – Provisionals

1926



grå – grey

1921



grå – grey

DANMARK

1904/12

Dagligserie „Kong Christian IX“ — Definitive series “King Christian IX”

1905



grøn – green

1904 – Type I



rod – red

1906 – Type II



rod – red

1904



blå – blue

1904



sortblå – black-blue

1905



sepiabrun – sepia-brown

1905



gråbrun – grey-brown

1905



brunlila – brown-lilac

1905



grålila – grey-lilac

1905



gulbrun – yellow-brown

1905



olivbrun – olive-brown

Dagligserie „Kong Frederik VIII“ — Definitive series “King Frederik VIII”

1907



grøn – green

1907



rod – red

1907



blå – blue

1911



ultramann – ultramarine

1907



sepiabrun – sepia-brown

1912



orange

1912



gul – yellow

1907



rodilla – red-lilac

1907



gulbrun – yellow-brown

DANMARK

1913/27

Dagligserie „Kong Christian X“ (Type I) — Definitive series “King Christian X” (Type I)

1913



grön - green

1918



orange

1920



grå - grey

1913



rod - red

1918



oliven - olive

1913



violet

1916



matilla - grey-lilac

1913



blå - blue

1921



brun - brown

1926



rod - red

Provisorier - Provisionals

1927



rod - red

1926



rod / sort - red / black

1922



orange

1921



oliven - olive

1926



violet

1926



orange

1926



blå - blue

DANMARK

1913/25

Dagligserie „Kong Christian X“ (Type I) — Definitive series “King Christian X” (Type I)

1913



brun - brown

1919



brun / sort - brown / black

1922



rød - red

1925



grøn - green

1918



rød / sort - red / black

1918



grøn / sort - green / black

1921



orange

1925



blå - blue

1913



orange

1919



gul / sort - yellow / black

1918



lila / grå - lilac / grey

1918



blålila / grå - blue-lilac / grey

1922



blå - blue

1925



orange

1913



vinrød - wine-red

1919



vinrød / sort - wine-red / black

1921



olivgrå - olive-grey

1922



grå - grey

DANMARK

1912/ 28

Dagligserie „Kong Christian X“ (Type I) — Definitive series “King Christian X” (Type I)

1919



brun / blå - brown / blue

1921



brun / ultramarin - brown / ultramarine

1921



blågrøn - blue-green

1920



brun / grøn - brown / green

1915



blågrøn - blue-green

1920



brun / rød - brown / red

1922



brun / blå - brown / blue

1926



grå / rødilla - grey / red-lilac

1927



violet / brun - violet / brown

1928



rød / grøn - red / green

1913



gulbrun - yellow-brown

1913



skifergrå - grey-black

1920



violet

1920



dyb rød-violet - deep red-violet

1912 : Vm. ny krone - Wmk. New Crown
Takning 12 1/4 Perforated



brunrød - brown-red

1915 : Vm. kors - Wmk. Multiple Crosses
Takning 14 x 14 1/2 Perforated



brunrød - brown-red

DANMARK

Provisorier på avisportomærker – Provisionals, surcharged Newspaper Stamps

1918

Vm. ny krone. Takning 12 3/4 – Wmk. New Crown, Perforated 12 3/4



oliven – olive



blå – blue



red – red



lila – lilac



brun – brown



rod grøn – red / green



brungul / blå – yellow-brown / blue

Vm. kors. Takning 14 × 14 1/2 – Wmk. Multiple Crosses, Perforated 14 × 14 1/2



oliven – olive



blå – blue



rod – red



grøn – green



lila – lilac



grøn – green



orange



orange



brun – brown



blågrøn / rod – blue-green / red

DANMARK

1912/27

Provisorier på tjenestefrimærker — Provisionals, surcharged Official Stamps

1926



orange

1926



grå - grey

1926



blå - blue

1926



grøn - green

1926



grøn - green

1926



violet

1926



mørkblå - dark blue

1912



grøn - green

1915



rosa - rose

Dagligserie „Karavel“ — Definitive series “Caravel”
Bogtryk, glat baggrund — Printed in typography with solid background

1927



red - red

1927



grå - grey

1927



blå - blue

1927



gul - yellow

1927



brunrød - brown-red

1927



grøn - green

DANMARK

1920/21



rod - red



grøn - green



brun - brown



blå - blue



1925/29

Luftpost — Airmail

1925



1926



1925



1929



1929

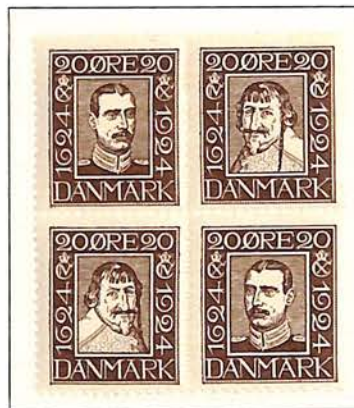
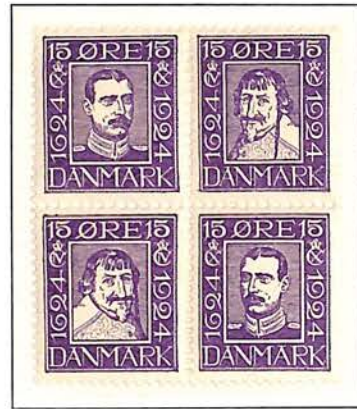


DANMARK

1926



1924



DANMARK

1929



1930



DANMARK

Tjenestefrimærker – Official Stamps

96 rigsbankskilling = 1 rigsdaler

1871

Takning 14 × 13½ Perforated



ultramarin – ultramarine



rosa – rose



grøn – green

100 øre = 1 krone

1875/1879

Vm. stor krone, Takning 14 × 13½ – Wmk. Large Crown, Perforated 14 × 13½

1875



lila – lilac

1879



blå – blue

1875



rosa – rose

1875



grøn – green

1902

Vm. ny krone, Takning 12¾ – Wmk. New Crown, Perforated 12¾



orange



grøn – green



karmín – carmine

DANMARK

Tjenestefrimærker – Official Stamps

96 rigsbanksilling = 1 rigsdaler

1871/1873

Takning $14 \times 13\frac{1}{2}$ Perf.

1873



blå – blue

Takning $12\frac{1}{2}$ Perforated

1871



carminrosa – carmine-rose

1871



grøn – green

100 øre = 1 krone

1875 / 1911

Vm. stor krone, Takning $12\frac{3}{4}$ – Wmk. Large Crown, Perforated $12\frac{3}{4}$

1901



lila – lilac

1896



blå – blue

1899



rosa – rose

Vm. ny krone, Takning $12\frac{3}{4}$ – Wmk. New Crown, Perforated $12\frac{3}{4}$

1906



lila – lilac

1903



blå – blue

1911



tegrød – brick red

Vm. stor krone, Takning $14 \times 13\frac{1}{2}$ – Wmk. Large Crown, Perforated $14 \times 13\frac{1}{2}$

1875



ultramann – ultramarine

1881



gulgrøn – yellow-green

DANMARK

Tjenestefrimærker – Official Stamps

1914/23

Vm. kors, Takning $14 \times 14\frac{1}{2}$ – Wmk. Multiple Crosses, Perforated $14 \times 14\frac{1}{2}$



orange

grå – grey

blå – blue

grøn – green



brun – brown

zinnobor – vermilion

grøn – green

lila – lilac

mørkeblå – dark blue

Gebymærker – Special Fee Stamps

1923/34



grøn – green

grøn – green

grøn – green

brun – brown

gulorange – yellow-orange

redorange – red-orange

DANMARK

Portomærker – Postage Due Stamps

1921/34



orange – orange



violet



grøn – green



orange



rod – red



blå – blue



brun / sort – brown / black



rod – red



vinrod / sort – wine-red / black

Soldaterfrimærker – Military Stamps

1917



grøn – green



rod – red

DANMARK

Portomærker – Postage Due Stamps

1921/30

Bogtrykudgave – Printed in typography

1922



orange

1925



blå – blue

1922



brun – brown

1930



gulgrøn – yellow-green

1927



gulgrøn – yellow-green

1930



violet

1922



grøn – green

1930



lysbrun – light brown

1921



blågrøn – blue-green

1930



grå – grey

1923



red – red

1926



violet

1930



lysbå – light blue

1921



mørkeblå – dark blue

1925



brun / blå – brown / blue

1924



violet

DANMARK

Portomærker – Postage Due Stamps

1934/55

Stålstikudgave – Printed in recess

1934



grønsort – green-black

1934



rød – red

1934



lysgrøn – light green

1941



oliven – olive

1950



rødlila – red-lilac

1934



orange

1955



mørkeblå – dark blue

1937



violet

1954



gråviolet – grey-violet

1934



grå – grey

1934



blå – blue

1953



grøn – green

1949



vinrød – wine-red

1934



brun – brown

DANMARK

Avisportomærker – Newspaper Stamps

1907

Vm. ny krone, Takning 12 3/4 – Wmk. New Crown, Perforated 12 3/4



oliven – olive



blå – blue



rød – red



lilla – lilac



grøn – green



orange



brun – brown



blågrøn / rød – blue-green / red



rød / grøn – red / green



brungul / blå – yellow-brown / blue

1914/15

Vm. kors, Takning 14 × 14 1/2 – Wmk. Multiple Crosses, Perforated 14 × 14 1/2



oliven – olive



blå – blue



rød – red



grøn – green



lilla – lilac



grøn – green



orange



orange



brun – brown



blågrøn / rød – blue-green / red

DANMARK

Postfærgemærker – Parcel Post Stamps

1919/41

Bogtryk, glat baggrund — Printed in typography with solid background

1922



grøn - green

1930



brun - brown

1932



rdbrun - red-brown

1919



rd - red

1919



violet

1919



matilla - grey-tlac

1922



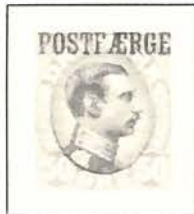
orange

1926



blå - blue

1920



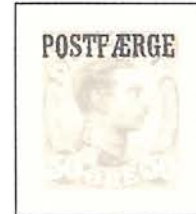
vinrd / sort - wine-red / black

1922



olivgrå - olive-grey

1925



grå - grey

1919



gulbrun - yellow-brown

1924



brun / blå - brown / blue

1941



violet / brun - violet / brown

1930



rd / grøn - red / green

Bogtryk, glat baggrund — Printed in typography with solid background

1927



rd - red

1927



gul - yellow

1930



grøn - green