



EXTRA
SINGLE, PAIR, LINE PAIR, PLATE & ZIP BLOCKS





HUNTING PERMIT STAMPS

Issue of 1934



RH1

Issue of 1935



RH2

Issue of 1936



RH3

Issue of 1937



RH4

Issue of 1938



RH5

Issue of 1939



RH6

Issue of 1940



RH7

Issue of 1941



RH8

Issue of 1942



RH9

Issue of 1943



Issue of 1944



RH11

Issue of 1945



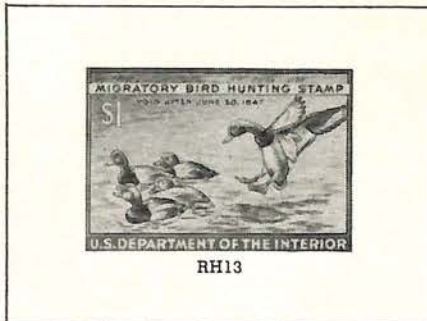
ISSUED to license hunters as authorized by Act of Congress. The revenue produced goes to maintain waterfowl life in the United States. These stamps are considered by many to be among the most beautiful issues created.



HUNTING PERMIT STAMPS

(continued)

Issue of 1946



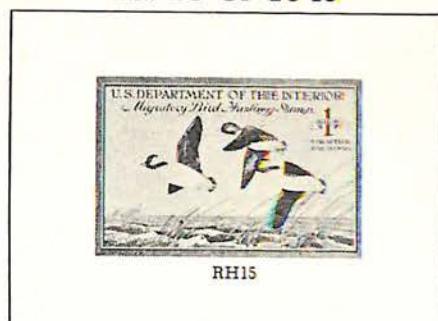
RH13

Issue of 1947



RH14

Issue of 1948



RH15

Issue of 1949



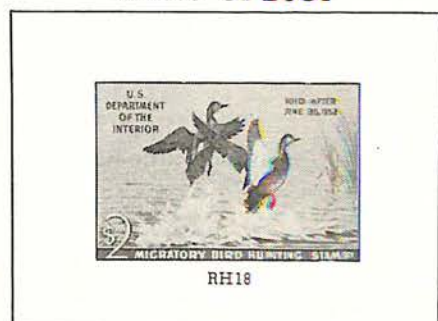
RH16

Issue of 1950



RH17

Issue of 1951



RH18

Issue of 1952



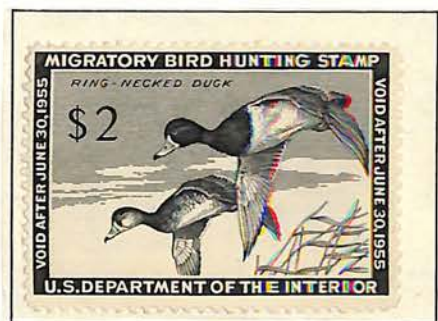
RH19

Issue of 1953

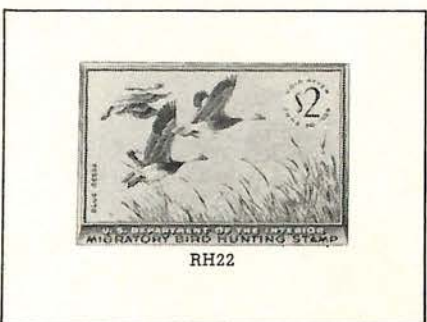


RH20

Issue of 1954



Issue of 1955



RH22

Issue of 1956



RH23

Issue of 1957



RH24



HUNTING PERMIT STAMPS

(continued)

Issue of 1968



RH35

Issue of 1969



RH36

Issue of 1970



RH37

Issue of 1971



Issue of 1972



RH39

Issue of 1973



RH40

Issue of 1974



Issue of 1975



RH42

Issue of 1976



Issue of 1977





HUNTING PERMIT STAMPS

(continued)

Issue of 1978



Issue of 1979



Issue of 1980



Issue of 1981



Issue of 1982



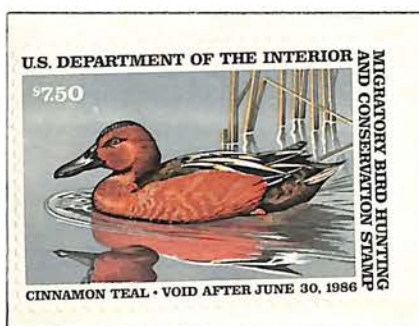
Issue of 1983



Issue of 1984



Issue of 1985



Issue of 1986

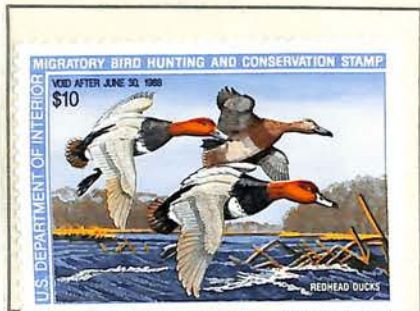




HUNTING PERMIT STAMPS

(continued)

Issue of 1987



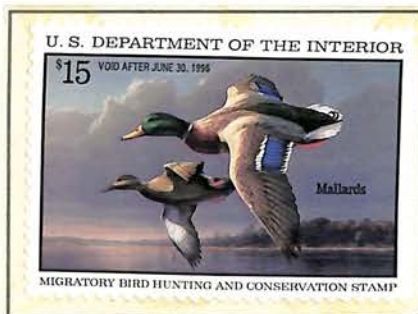
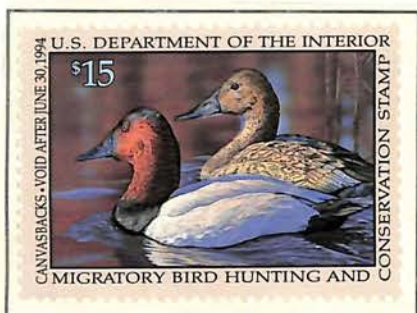
Issue of 1988



Issue of 1989



Issue of 1990





SPECIAL DELIVERY

Printed by the American Bank Note Co.

Perforated 12
Unwatermarked

Issue of 1885



Issue of 1888



Messenger Running

Issue of 1893



Printed by the Bureau of Engraving and Printing

Issue of 1894



Issue of 1895



Messenger Running

Double-line Watermark

Issue of 1908



Helmet of Mercury

Issue of 1902



Messenger on Bicycle

Single-line Watermark

Issue of 1911



SD8

Issue of 1914



SD9

Messenger on Bicycle

The demand for fast delivery of mail brought forth the Special Delivery Issues. When affixed to a letter it indicated that the letter would secure immediate attention and be delivered between hours of 7 A.M. and midnight.



SPECIAL DELIVERY

UNWATERMARKED
FLAT PLATE PRINTING

Issue of 1916
PERFORATED 10



SD10

Issue of 1917
PERFORATED 11



Issue of 1922
PERFORATED 11



FLAT PLATE PRINTING

Issue of 1925
PERFORATED 11



Issue of 1925
PERFORATED 11



ROTARY PRESS PRINTING

Issue of 1927
PERFORATED 11 x 10½



ROTARY PRESS PRINTING
PERFORATED 11 x 10½

Issue of 1931



Issue of 1944



Issue of 1944



Issue of 1951



Issue of 1954



Issue of 1957





PARCEL POST STAMPS

Issue of 1912-13

PERFORATED 12

SINGLE-LINE WATERMARK



Post Office Clerk



City Carrier



Railway Postal Clerk



Rural Carrier



Mail Train



Steamship and Mail Tender



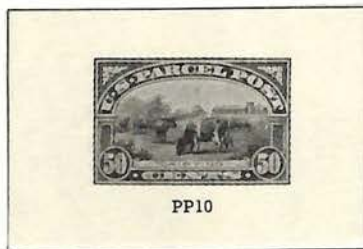
Automobile Service



Airplane Carrying Mail



Manufacturing



Dairying



Harvesting



Fruit Growing

SPECIFICALLY created to meet the requirements of fourth class matter by Act of Congress approved August 24, 1912, these stamps were declared valid for all purposes for which regular stamps were valid. The 20 cent value featured as the central part of its design an aeroplane and this was the first time any country had ever featured an aeroplane on its stamps.



PARCEL POST POSTAGE DUE

Issue of 1912



SPECIAL HANDLING

Issue of 1925-29



REGISTRATION STAMP

Issue of 1911

PERFORATED 12
SINGLE-LINE WATERMARK



Issued to prepay registry fees these stamps were soon discontinued, as ordinary postage stamps were valid for the same purpose.



The Special Handling series of stamps were provided for use on fourth class matter and when affixed would secure for such mail the expeditious handling accorded to first class matter.

CERTIFIED MAIL STAMP

Issue of 1955

PERFORATED 10½ x 11



Issued as a simplified form of registration applicable to mail having no intrinsic value.



BOOKLET PANES

Express Mail

1983



Express Mail

1985





EXPRESS MAIL
BOOKLET
1983



1985





EXPRESS MAIL
BUCKET
1989



UNITED STATES

COMMEMORATIVES



EXPRESS MAIL-1983

*Official
First Day
of Issue*



FIRST DAY OF ISSUE

Express Mail

NEXT DAY SERVICE

\$9.35 Postage Stamp



UNITED STATES



POSTAL ISSUES

U.S. "AIR-POST" ISSUE
WASHINGTON, D.C. 20043
08/23/89



KENSINGTON, MD. 20895
09/01/89





RUDDY DUCKS
1981



CANVASBACKS
1982



UNITED STATES

POSTAL ISSUES



PINTAILS
1983





WIGEON
1984



173872

CINNAMON TEAL
1985

174343





FULVUS WHISTLING
1986

176844



U.S. DEPARTMENT OF THE INTERIOR

U.S. DEPARTMENT OF THE INTERIOR



U.S. DEPARTMENT OF THE INTERIOR

U.S. DEPARTMENT OF THE INTERIOR

REHEAD
1987

178171



UNITED STATES

COMMEMORATIVES



SNOW GOOSE
1988



180059



LESSER SCAUP
1989



UNITED STATES

COMMEMORATIVES



BLACK BELLED WHISTLING
1990

186307



KING EIDERS
1991



188404

1991

KING EIDERS



1992

SPECTACLED EIDER



190493

1993

CANVASBACK



1994

RED-BREASTED MERGANSER



1995

MALLARDS



1996

SURF SCOTER



1997

CANADA GOOSE

196441



1998

BARROW'S GOLDENYE
SELF ADHESIVE

The New Federal Duck Stamp Self Adhesive Single

...presented by the U.S. Fish & Wildlife Service

\$500 MILLION

in Duck Stamps since 1934 have purchased

5 MILLION ACRES...

an area the size of Massachusetts!

98% OF DUCK STAMP DOLLARS

purchase wetlands and other wildlife habitat.

*Help conserve America's natural heritage
Do your part - Buy Duck Stamps!*



If applicable, sign, peel and attach to license

1998

BARROW'S GOLDENEYE



197573



Issue of 1895-98

Perforated 12

Double-line Watermark



Benjamin Franklin



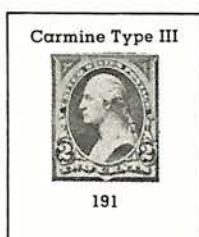
Benjamin Franklin



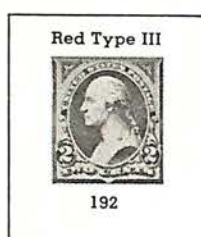
George Washington



George Washington



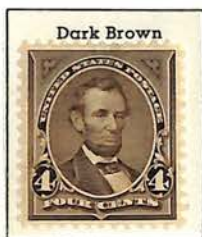
George Washington



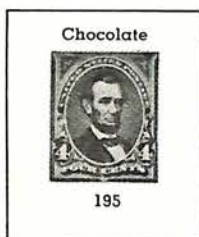
192



Andrew Jackson



Abraham Lincoln



195



Ulysses S. Grant



197



198



199

James A. Garfield



William T. Sherman

UNITED STATES

POSTAL ISSUES



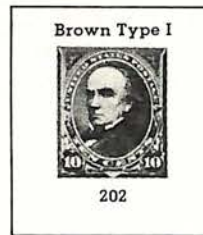
ISSUE 1895-98
PERF. 12
MINKUS 192
SCOTT 279B



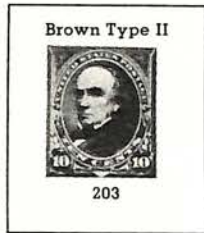


Issue of 1895-98

Perforated 12
Double-line Watermark



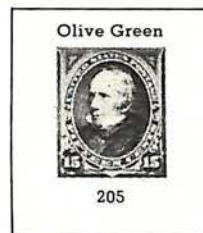
Daniel Webster



Daniel Webster



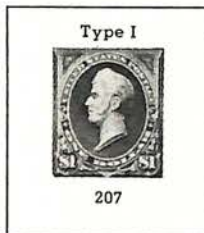
Henry Clay



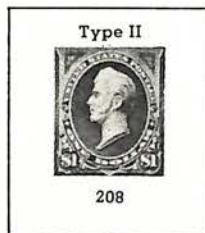
Henry Clay



Thomas Jefferson



Commodore Perry



Commodore Perry



James Madison



John Marshall

Two types of the 10¢ stamp are distinguished as illustrated:

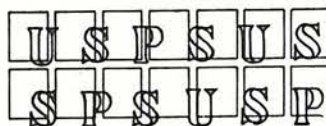


Type II

A line of color appears in the white curve below "TS" of cents and "E" of Ten.

In printing this new issue watermarked paper was used for the first time on stamps intended for postage purposes. Watermarking had been used previously for revenue stamps and postcards. The watermark consisted of Double-line letters "U S P S" so distributed that each stamp on the sheet shows at least a part of the watermarking, as illustrated below.

In 1910 a single-line watermark was used for the first time by the Bureau.



Double-line



Single-line



Issue of 1902-03

PERFORATED 12

DOUBLE-LINE WATERMARK



Benjamin Franklin



George Washington



Andrew Jackson



Ulysses S. Grant



Abraham Lincoln



James A. Garfield



Martha Washington



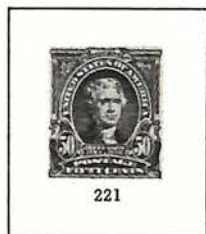
Daniel Webster



Benjamin Harrison



Henry Clay



Thomas Jefferson



David G. Farragut



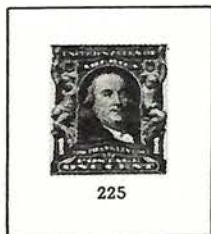
James Madison



John Marshall

Issue of 1906-08

IMPERFORATE



Benjamin Franklin



Abraham Lincoln

Issue of 1903-06

PERFORATED 12

IMPERFORATE



George Washington



George Washington

THIS series of postage stamps featured elaborately engraved framed designs with the name of the person and the years of birth and death on each stamp directly under each portrait. For the first time in United States postal history an American woman, Martha Washington, graced a stamp, the 8¢ value.



Issue of 1908-17

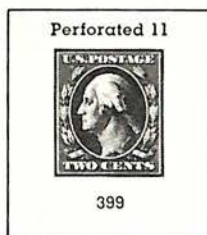
Perforated 12
Double-line Watermark



Benjamin Franklin

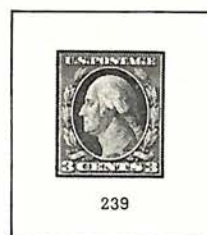


George Washington



Perforated 11

399



239



240



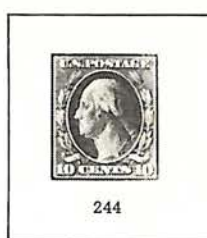
241



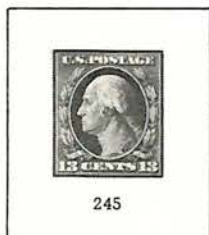
242



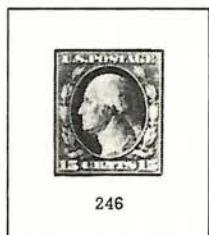
243



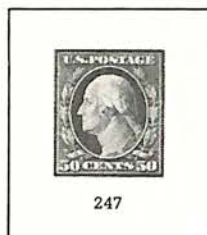
244



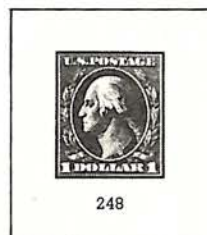
245



246



247



248

Imperforate



This series for the sake of uniformity and artistic effect featured the head of George Washington on all of the denominations except the 1¢ which portrayed Benjamin Franklin. Part of this issue was printed on a stock which was made of 35 per cent rag and are known as "bluish paper," although they are actually grayish in appearance. Most of the denominations printed on this paper are rare.

UNITED STATES

POSTAL ISSUES



ISSUE 1895-98
PERF. 12
MINKUS 187
SCOTT 264



UNITED STATES



POSTAL ISSUES

ISSUE OF 1908-17
IMPERFORATE
MINKUS 249-253
SCOTT 343-347





Issue of 1916-17

Flate Plate Printing
Imperforate
Unwatermarked



Issue of 1916-22

Rotary Press Printing
Coils Perforated 10 Horizontally
Unwatermarked



Perforated 10 Vertically



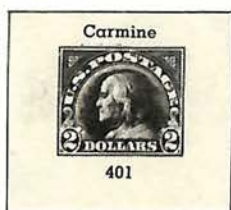


Issue of 1917-19

Flat Plate Printing

Perforated 11

Unwatermarked



The Bureau of Engraving and Printing was still trying to find a more suitable size of perforation. Perforation 12 was found to be too fragile and perforation, 10 was too strong, causing damage to stamps during separation. To remedy these defects perforation 11 was used for this series.



Issue of 1918-20

Offset Printing

Perforated 11



Perforated 11



Perforated 11



Perforated 12½



imperforate



The Bureau again experimenting tried with the 1918-20 issues to use the offset method of printing (a type of lithography). It was not successful and was soon discontinued.

Issue of 1919-21

Rotary Press Printing

Perforated 11 x 10



Perforated 10 x 11



Perforated 10



Perforated 11



Perforated 11



Stamps which were originally intended to be issued in coil form but were later perforated fully are known as coil waste, and some of the above issues were created in this manner.



Issue of 1922-26

Flat Plate Printing

Perforated 11



Nathan Hale



Benjamin Franklin



Warren G. Harding



George Washington



Abraham Lincoln



Martha Washington



Theodore Roosevelt



James A. Garfield



William McKinley



Ulysses S. Grant



Thomas Jefferson



James Monroe



Rutherford B. Hayes



Grover Cleveland



Benjamin Harrison



American Indian



Issue of 1922-26

Flat Plate Printing

Perforated 11



Woodrow Wilson



Statue of Liberty



Golden Gate



Niagara Falls



Bison



Arlington Amphitheatre



Lincoln Memorial



U. S. Capitol



America

Imperforate



Benjamin Franklin



Warren G. Harding



George Washington

With this issue an entirely new series was made available to the American public. It featured presidents, famous Americans, and pictures of the American scene.

UNITED STATES

POSTAL ISSUES



ISSUE 1922-1926
ARROW BLOCK
MINKUS 444
SCOTT 576





Issue of 1923-26

Rotary Press Printing

Perforated 11 x 10



Perforated 10



The same designs used in the previous issue were used for this printing. In order to overcome the tendency of Rotary Press stamps to curl, the Bureau of Engraving and Printing used gum breaker bars. These bars which are colorless, raised, impressions may be seen on the gummed side of mint rotary press stamps.



Rotary Press Coils of 1923-32

1923-29

Perforated 10 Vertically



1923-25

Perforated 10 Horizontally



1930-32

Perforated 10

Vertically



Vertically



Horizontally



Vertically





ISSUE 1923-32
PERF. 10 VERT.
MIN KUS 461-468
SCOTT 597-603
PAIR & LINE PAIR
FRANKLIN



HARDING



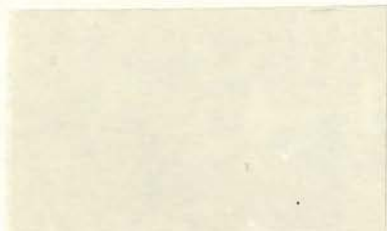
WASHINGTON



LINCOLN



MARTHA WASHINGTON



UNITED STATES

POSTAL ISSUES



PAIR & LINE PAIR

ISSUE 1923-25
PERF. 10 HORZ.
MINKUS 469-471
SCOTT 604-606

FRANKLIN



HARDING



WASHINGTON





Issue of 1926-34

Rotary Press Printing

Perforated 11 x 10½





Issue of 1926-34

Rotary Press Printing

Perforated 11 x 10½

Perforated 10½ x 11



Perforated 10½ x 11



Perforated 10½ x 11



After much experimentation the Bureau of Engraving and Printing decided that the 11 by 10½ perforation was the most suitable for the rotary press printed stamps and is still in use.

Issue of 1926

Rotary Press Printing

Imperforate



Issue of 1930-32

Rotary Press Printing

Perforated 11 x 10½



Warren G. Harding



George Washington



William Howard Taft

Following the death of President William Howard Taft the Post Office Department issued a new 4-cent stamp bearing his likeness.

UNITED STATES



POSTAL ISSUES

ISSUE OF 1926
ROTARY PRESS PRINTING
IMPERFORATE
GUTTER PAIR



COIL
PAIR & LINE PAIRS



UNITED STATES

POSTAL ISSUES



ISSUE OF 1926
COIL
PAIR & LINE PAIR





Issue of 1929

ROTARY PRESS PRINTING
PERFORATED 11 x 10½

OVERPRINTED KANS.



OVERPRINTED KANS.



OVERPRINTED NEBR.



OVERPRINTED NEBR.



To prevent losses from Post Office burglaries in the mid-west the rotary press issue of 1926 was overprinted Kans. (for use in Kansas) and Nebr. (for use in Nebraska). The overprint was intended to prevent the sale of stolen stamps in other states and to make attempts of disposal difficult. The experiment was discontinued after a short trial period and for that reason the issue is a prized collectors item.



Issue of 1938-43

ROTARY PRESS PRINTING

PERFORATED 11 x 10½



Benjamin Franklin



George Washington



Martha Washington



John Adams



Thomas Jefferson



James Madison



The White House



James Monroe



John Quincy Adams



Andrew Jackson



Martin Van Buren



William H. Harrison



John Tyler



James K. Polk



Zachary Taylor



Millard Fillmore



Franklin Pierce



James Buchanan



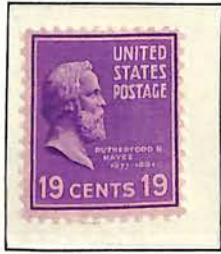
Abraham Lincoln



Andrew Johnson



Ulysses S. Grant



Rutherford B. Hayes



James A. Garfield



Chester A. Arthur



Issue of 1938-43

(continued)



Grover Cleveland



Benjamin Harrison



William McKinley



Theodore Roosevelt



William Howard Taft

Flat Plate Printing, Perforated 11



Woodrow Wilson



Warren G. Harding



Calvin Coolidge

Coil Stamps, Perforated 10 Vertically



PERFORATED 10 HORIZONTALLY



ISSUED as a series of ordinary postage stamps replacing the 1922-31 stamps this set is called the Presidential issue because all of our past presidents who had passed on as of 1938 are pictured. Starting with George Washington and ending with Calvin Coolidge the presidents are listed in the order in which they served. Also included are Benjamin Franklin (1/2¢), Martha Washington (1 1/2¢), and view of the White House (4 1/2¢).



1938-43
PERFORATED 10 VERTICALLY
GEORGE WASHINGTON



MARTHA WASHINGTON



JOHN ADAMS



THOMAS JEFFERSON



JAMES MADISON



WHITE HOUSE



JAMES MONROE



JOHN QUINCY ADAMS



JOHN TYLER





1938-43
PERFORATED 10 VERTICALLY
LINE PAIR
GEORGE WASHINGTON



MARTHA WASHINGTON



JOHN ADAMS



THOMAS JEFFERSON



JAMES MADISON



WHITE HOUSE



JAMES MONROE



JOHN QUINCY ADAMS



JOHN TYLER

