

UNUSUAL RARE COVER

NEWBURYPORT, MASS. FIRE DEPARTMENT, HOSE 7

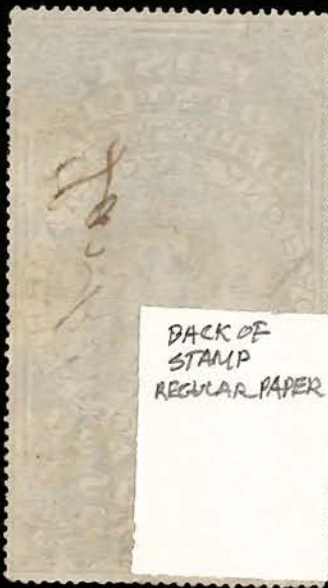
PROVIDING POSTAL MAIL SERVICE

If not delivered in ten days, return to



HOSE 7, NEWBURYPORT, MASS.





BACK OF  
STAMP  
REGULAR PAPER



BACK OF  
STAMP  
PELURE PAPER



OXF1  
YELLOWISH  
GUM



OXF1  
BLACK/4  
NH w/2.  
GUM  
STRIPS  
600-



ADVERTISING



OXF2  
HARD WHITE WOVE  
PAPER WITHOUT GUM  
Bluish Green

\$4,000



OXF1 #30  
w/gum



w/o gum







YELLOW GREEN







PRECANCELED



For Packets of Registered Letters.  
GREEN.



HAND STAMPED  
Wm. LEECKE & CO.  
STAMP IMPORTERS  
CHICAGO  
ADVERTISING ON  
A US STAMP







**INSURED**

No. \_\_\_\_\_

3816-d

U. S. GOVERNMENT PRINTING OFFICE: 1958 5-10030

4416

UNITED STATES POST OFFICE

**DIRECT PACKAGE**

Firm Case Mail

**ALL FOR FIRM ON FACE**

Impression of Clerk's Case Stamp must appear below:



Upon opening this package you will kindly note whether or not errors are found. If so, please enter your firm name and date on this slip, and return it together with wrongly delivered mail to the post office.

This cooperation on your part will enable this office to place responsibility and eventually give you better service.

GPO c6-16-62703-1

POSTMASTER

U. S. REGISTERED PACKAGE

POSTMASTER AT—

STATE

OAK TERRACE

MINN.



POST OFFICE DEPARTMENT  
THIRD ASSISTANT POSTMASTER GENERAL  
DIVISION OF STAMPS  
WASHINGTON, D. C.  
OFFICIAL BUSINESS

PENALTY FOR PRIVATE  
USE TO AVOID PAYMENT  
OF POSTAGE, \$500.

Reg. No. **105147** (Package )

Every Postmaster and Postal Clerk who handles this Registered Package must record it, receipt for it, and obtain a receipt for it in proper form. This package must be delivered to the addressee named without removing the wrapper or label. 16-14744

SHEEP  
Brook



Y

123-527



Form 4416

UNITED STATES POST OFFICE

**DIRECT PACKAGE**

Firm Case Mail

**ALL FOR FIRM ON FACE**

Impression of Clerk's Case Stamp must appear below:



Upon opening this package you will kindly note whether or not errors are found. If so, please enter your firm name and date on this slip, and return it together with wrongly delivered mail to the post office.

This cooperation on your part will enable this office to place responsibility and eventually give you better service.

GPO c6-16-62703-1



Post Office Seals

1872

Perf 12

Printed by National Bank Note Company



Unused



Proper circular date stamp



Pen cancel



Rubber stamp



Pencil cancel

Typographed from a copper plate of 30 subjects.



# UNITED STATES REGISTERED PACKAGE

PREPARED AND DISPATCHED IN THIS MANNER BY PERMISSION OF THE POST OFFICE DEPARTMENT

**INSTRUCTIONS TO POSTMASTERS:** The use of this label does not permit the free registration of the mail to which it is affixed when mailed elsewhere than at Washington, D. C., except in the cases specially provided for as published in Article 34, page 150, of the July 1936, Postal Guide.

No return receipt will be furnished for mail registered under this label, unless the sender endorses the package "Return receipt demanded" and pays the prescribed fee therefor.  
This label is not to be separated from the wrapper. It should be delivered intact with the package to which it is attached.

## TREASURY DEPARTMENT INTERNAL REVENUE SERVICE

OFFICIAL BUSINESS

Commissioner

(Title of office)

Washington, D. C.  
(Address)

Collector of Internal Revenue

Los Angeles, California

REG. No. 312543

(EVERY POSTMASTER AND POSTAL CLERK WHO HANDLES THIS REGISTERED PACKAGE MUST RECORD IT, RECEIPT FOR IT, AND OBTAIN A RECEIPT FOR IT, IN PROPER FORM.)

U. S. GOVERNMENT PRINTING OFFICE 2-5807

REGISTERED

POSTMASTER

*Revenue*

*Monroe* COUNTY,

STATE,

*Yaconson*

POSTMASTERS and ROUTE AGENTS handling this Package are required to keep a complete record of the number, address, date of its receipt, to whom delivered, date of such delivery, etc. Receipts for the same must be taken when practicable.

BOOKS and BLANK RECEIPTS are furnished to Route Agents by the First Assistant Postmaster General.

By order of the Postmaster General:

A. D. HAZEN,

*Third Asst P. M. General*

The Postmaster addressed will open this package as soon as received, and comply fully with instructions on invoice.

C. F. MACDONALD,

*Supt Money Order System.*

Department,  
AGENCY,  
ADELPHIA, PA.



**REGISTERED PACKAGE**

POSTMASTER AT

*Sandwich*

*1876*



No. *29*

Postmark of



Open by Cutting this End

**REGISTERED PACKAGE**

POSTMASTER AT

*Longbridge*



No. *7862*

Postmark of



Open by Cutting This End



Post Office Seals

Sept. 30, 1872 Chicago, Ill. "Registered Package" envelope showing proper use of 1872 seal. The Package contained one or more Registered Letters for Frenchville, Wis.

Note the wax seals The wax impression is "Registered Chicago, Ill."

Reverse of envelope has a "Record of Transit" requiring a signature and date each step of the transport as well as a note as to condition.

Below shows reverse.

POLY-VU  
AVERY™

RECORD OF TRANSIT.	
Condition.	Signature.
Good or Bad.	By Whom Received and Date.
<p><b>INSTRUCTIONS.</b></p> <p>All Postal Officers handling this Package must keep a Record of its Number, Postmark with Date, Address, Date of Receipt and Disposition made of it, so that it may be traced from Place of Mailing to its Destination, always taking a Receipt for it when practicable. If such Receipt can not be obtained at the time, a Receipt properly filled up must be placed in the Pouch with the Package, to be signed by the P. M. of the next office where the Pouch is opened, and by him returned to the forwarding Route Agent or Postmaster (Mark by next mark)</p> <p>F. W. BARRETT.</p> <p>Third Assistant Postmaster General</p>	





Post Office Seals

This Nov. 18, 1872  
Registered Package  
envelope from New  
York containing  
Registered Letters  
to Lawrenceburg,  
Tenn.

The "Record of  
Transit" is signed  
by three people,  
each stating the  
condition was  
"Good" on Nov.  
22, 23, and 25.  
This indicates  
that the parcel  
changed hands  
three times on  
transit to its  
destination in  
Tenn.

The package  
indicates a  
registration  
number 3432.





**REGISTERED PACKAGE**

**POSTMASTER AT**

*Philadelphia Pa*

*Oct 1*



No.

Postmark of



Mailing Office

ASK 10-

*Post*



POSTMASTERS RECEIVING THIS PACKAGE  
—WILL PLEASE—  
**NOTE ITS CONDITION.**

If showing signs of having been tampered with, report the same and return this package to 3d Asst. P. M. General, at Washington, D.C. This package should be opened at the end.

*W. H. Hagen*  
3d Asst. P. M. G.

U.S. POSTAGE STAMP AGENCY

POSTMASTERS RECEIVING THIS PACKAGE  
—WILL PLEASE—  
**NOTE ITS CONDITION.**

If showing signs of having been tampered with, report the same and return this package to 3d Asst. P. M. General, at Washington, D.C. This package should be opened at the end.

*W. H. Hagen*  
3d Asst. P. M. G.

OXF5



**REGISTERED.**

*B. A. L.*

*10*

*400-  
OX 152 SAUND  
81410*

POSTMASTERS RECEIVING THIS PACKAGE  
 — WILL PLEASE —  
**NOTE ITS CONDITION.**  
 If showing signs of having been tam-  
 pered with, report the same and return  
 this package to 3d Asst. P. M. General, at  
 Washington, D. C. This package *Ad. Hagen*  
 should be opened at the end.

3d Asst. P. M. G.

*J. F. THOMPSON*  
*MAR 10 1910*  
*Ballot & Lex. R.P. O.*



**REGISTERED.**



**OPEN AT END.**

**THE POSTMASTER TO WHOM THIS PACKAGE IS SENT MUST NOTE ITS CONDITION AND CAREFULLY COUNT ITS CONTENTS.**

If it shows signs of having been tampered with, the fact should be reported to the **THIRD ASSISTANT POSTMASTER-GENERAL.**

If the count shows a deficiency in the contents of the package, or an excess, the case must be treated as indicated in Sec. 120 P. L. & R. The Postmaster should not correspond with the Stamp Agent, but with the Third Assistant Postmaster-General. See also Sec. 1088 as to misdirected packages.

**KERR CRAIGIE,**

Third Assistant Postmaster-General.

210  
OX F11



**REGISTERED.**

Gray 2/10-92  
Novel 2/10



210  
OXF/A

**OPEN AT END.**

**THE POSTMASTER TO WHOM THIS PACKAGE IS SENT MUST NOTE ITS CONDITION AND CAREFULLY COUNT ITS CONTENTS.**

If it shows signs of having been tampered with, the fact should be reported to the **THIRD ASSISTANT POSTMASTER-GENERAL.**

If the count shows a deficiency in the contents of the package, or an excess, the case must be treated as indicated in Sec. 120, P. L. & R. The Postmaster should not correspond with the Stamp Agent, but with the Third Assistant Postmaster-General. See also Sec. 1088 as to misdirected packages.

**EDWIN C. MADDEN,**  
Third Assistant Postmaster-General.



POSTMASTERS RECEIVING THIS PACKAGE  
—WILL PLEASE—  
**NOTE ITS CONDITION.**

If showing signs of having been tampered with, report the same and return this package to 3d Asst. P. M. General, at Washington, D. C. This package should be opened at the end.

*A. Hagen*  
3d Asst. P. M. G.

U.S. POSTAGE STAMP AGENCY

POSTMASTERS RECEIVING THIS PACKAGE  
—WILL PLEASE—  
**NOTE ITS CONDITION.**

If showing signs of having been tampered with, report the same and return this package to 3d Asst. P. M. General, at Washington, D. C. This package should be opened at the end.

*A. Hagen*  
3d Asst. P. M. G.

U.S. POSTAGE STAMP AGENCY

POSTMASTERS RECEIVING THIS PACKAGE  
—WILL PLEASE—  
**NOTE ITS CONDITION.**

If showing signs of having been tampered with, report the same and return this package to 3d Asst. P. M. General, at Washington, D. C. This package should be opened at the end.

*W. Barber*  
3d Asst. P. M. G.

**OPEN AT END**

THE POSTMASTER TO WHOM THIS PACKAGE IS SENT MUST NOTE ITS CONDITION AND IMMEDIATELY UPON ITS RECEIPT CAREFULLY COUNT ITS CONTENTS.

If it shows signs of having been tampered with, the fact should be reported to the Third Assistant Postmaster General, Division of Stamps.

INVOICE FOR THIS PACKAGE OF STAMPS WILL BE FOUND WITHIN. Count the stamps carefully, IN THE PRESENCE OF A DISINTERESTED WITNESS, as indicated on invoice, and if an excess or shortage is found, treat the case as directed in Section 159, P. L. & R., notifying the Third Assistant Postmaster General, Division of Stamps. See Section 970, P. L. & R., as to misdirected packages.

**OPEN AT END**

THE POSTMASTER TO WHOM THIS PACKAGE IS SENT MUST NOTE ITS CONDITION AND IMMEDIATELY UPON ITS RECEIPT CAREFULLY COUNT ITS CONTENTS.

If it shows signs of having been tampered with, the fact should be reported to the Third Assistant Postmaster General, Division of Stamps.

INVOICE FOR THIS PACKAGE OF STAMPS WILL BE FOUND WITHIN. Count the stamps carefully, IN THE PRESENCE OF A DISINTERESTED WITNESS, as indicated on invoice, and if an excess or shortage is found, treat the case as directed in Section 159, P. L. & R., notifying the Third Assistant Postmaster General, Division of Stamps. See Section 970, P. L. & R., as to misdirected packages.

**OPEN AT END.**

THE POSTMASTER TO WHOM THIS PACKAGE IS SENT MUST NOTE ITS CONDITION AND CAREFULLY COUNT ITS CONTENTS.

If it shows signs of having been tampered with, the fact should be reported to the THIRD ASSISTANT POSTMASTER-GENERAL.

If the count shows a deficiency in the contents of the package, or an excess, the case must be treated as indicated in Sec. 120 P. L. & R. The Postmaster should not correspond with the Stamp Agent, but with the Third Assistant Postmaster-General. See also Sec. 1088 as to misdirected packages.

**KERR CRAIGE,**

Third Assistant Postmaster-General.



POST OFFICE DEPARTMENT,  
Office of First Ass't P. M. General,  
DEAD-LETTER OFFICE.

TO THE PERSON ADDRESSED:  
Inform your correspondent of the correct name of your post office.

TO THE POSTMASTER:  
If this letter can not be delivered you will, at the expiration of SEVEN days, stamp the letter with your postmarking stamp, and send it to the Dead-Letter Office as "Unmailable," duly entered on bill (Form 1522½), as required by Paragraph 6 of Sec. 566 of the Postal Regulations.

5-3282

POST OFFICE DEPARTMENT,  
Office of First Ass't P. M. General,  
DEAD-LETTER OFFICE.

TO THE PERSON ADDRESSED:  
Inform your correspondent of the correct name of your post office.

TO THE POSTMASTER:  
If this letter can not be delivered you will, at the expiration of SEVEN days, stamp the letter with your postmarking stamp, and send it to the Dead-Letter Office as "Unmailable," duly entered on bill (Form 1522½), as required by Paragraph 6 of Sec. 566 of the Postal Regulations.

5-3282

OXA6 #40  
HYPHEN HOLE 7

POST OFFICE DEPARTMENT,  
Office of First Ass't P. M. General,  
DEAD-LETTER OFFICE.

TO THE PERSON ADDRESSED:  
Inform your correspondent of the correct name of your post office.

TO THE POSTMASTER:  
If this letter cannot be delivered you will, at the expiration of SEVEN days, stamp the letter with your postmarking stamp, and send it to the Dead-Letter Office as "Unmailable," duly entered on bill (Form 1522½), as required by Paragraph 6 of Sec. 600 of the Postal Regulations.

5-2-07

POST OFFICE DEPARTMENT,  
Office of First Ass't P. M. General,  
DEAD-LETTER OFFICE.

TO THE PERSON ADDRESSED:  
Inform your correspondent of the correct name of your post office.

TO THE POSTMASTER:  
If this letter can not be delivered you will, at the expiration of SEVEN days, stamp the letter with your postmarking stamp, and send it to the Dead-Letter Office as "Unmailable," duly entered on bill (Form 1522½), as required by Paragraph 6 of Sec. 566 of the Postal Regulations.

5-3282

OXA6 \$20  
PERF. 12

OXA6 \$25  
PERF. 12



U.S. REGISTERED PACKAGE

POSTMASTER AT—  
Marquette

COUNTY  
Marquette

STATE  
Mich.

LEARNING  
PENALTY FOR PRIVATE  
USE TO AVOID PAYMENT  
OF POSTAGE, \$300

POST OFFICE DEPARTMENT  
THIRD ASSISTANT POSTMASTER GENERAL  
DIVISION OF STAMPS  
WASHINGTON, D. C.  
OFFICIAL BUSINESS

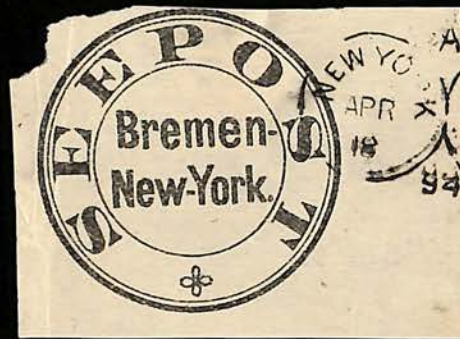
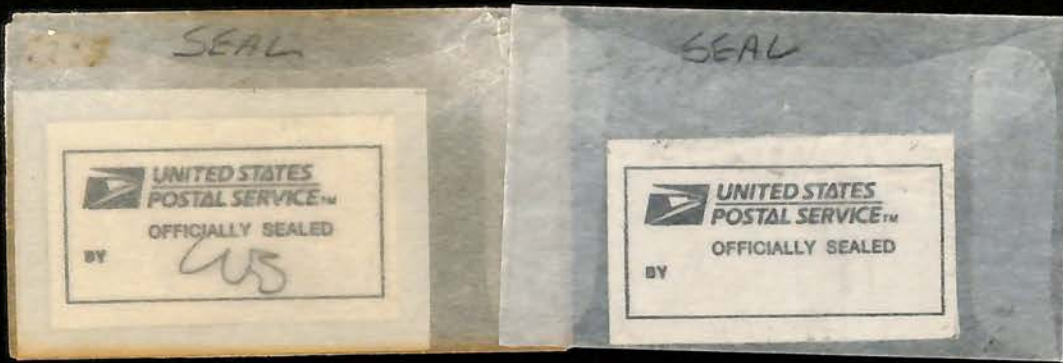
31691

Reg. No. (Package)

Every Postmaster and Postal Clerk who handles this Registered Package must record its receipt for it, and obtain a receipt for it in proper form. This package must be delivered to the addressee named below without removing the wrapper or label.

5-11853

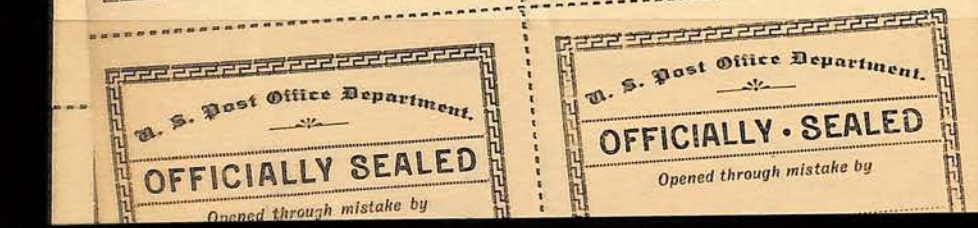
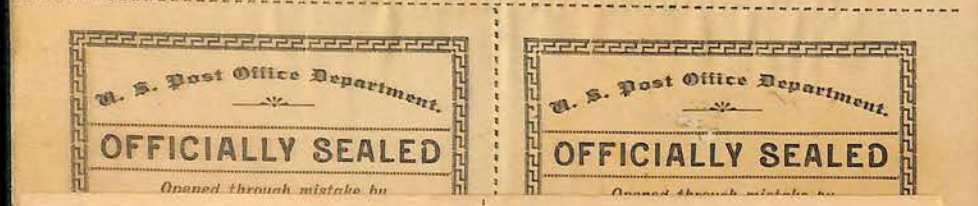




OX SPI \$400  
UNLISTED FOR HAMBURG  
COULD BE RARE.







ROULETTED 1 1/2  
SHEET OF 4  
NO DOT AFTER "OFFICIALLY"  
LOX11  
15-

LOX11  
1 1/2 TOP  
AND SIDE  
1500



LOX11G  
USED / RARE  
PERF 12 1/2 at top  
11 1/2 LEFT  
IMPERF RIGHT & BOTTOM



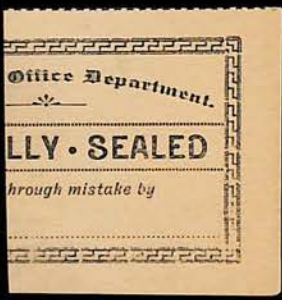
EV \$2,500



ROULETTED  
12 1/2  
AT TOP ONLY  
UNLISTED VARIETY



OFFICIALLY SEALED  
no dot



LOX11 h.  
ROULETTED  
16 1/2  
AT TOP \$250



LOX11  
ROULETTED  
12 1/2 TOP & SIDE  
\$1.00



LOX11 d.  
ROULETTED  
11 1/2 AT TOP  
\$200



U. S. Post Office Department.  
**OFFICIALLY SEALED**  
Opened through mistake by

U. S. Post Office Department.  
**OFFICIALLY SEALED**  
Opened through mistake by

U. S. Post Office Department.  
**OFFICIALLY SEALED**  
Opened through mistake by  
*Mrs. M. Soave*

U. S. Post Office Department.  
**OFFICIALLY SEALED**  
Opened through mistake by  
*Katharine B. Smith*

LOX 9 \$50  
100-

U. S. Post Office Department.  
**OFFICIALLY SEALED.**  
Opened through mistake by

LOX 9  
\$500 ee.

U. S. Post Office Department.  
**OFFICIALLY SEALED**  
Opened through mistake by

U. S. Post Office Department.  
**OFFICIALLY SEALED**  
Opened through mistake by

U. S. Post Office Department.  
**OFFICIALLY SEALED**  
Opened through mistake by

U. S. Post Office Department.  
**OFFICIALLY SEALED**  
Opened through mistake by

U. S. Post Office Department.  
**OFFICIALLY SEALED**  
Opened through mistake by

U. S. Post Office Department.  
**OFFICIALLY SEALED**  
Opened through mistake by

U. S. Post Office Department.  
**OFFICIALLY SEALED**  
Opened through mistake by

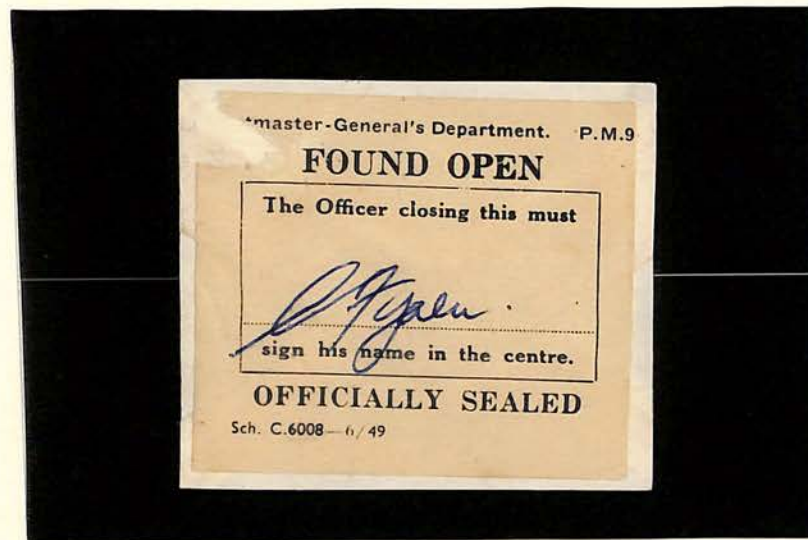
U. S. Post Office Department.  
**OFFICIALLY SEALED**  
Opened through mistake by  
*R. K. Ball*

U. S. Post Office Department.  
**OFFICIALLY SEALED**  
Opened through mistake by

U. S. Post Office Department.  
**OFFICIALLY SEALED**  
Opened through mistake by



RARE



UNLISTED OFFICIALLY SEALED ON PIECE



PERF 16½ LOX8 100-



POSTALLY CANCELED



TSS8

Printed and distributed by Morrill Bros., P.O. Supply Printers, Fulton, N.Y., in panes of 4, two tete beche pairs.

**Rouletted 11½, 12½, 16½ in black at top & side**

LOX8 TSS8	black, rouletted 11½	100.00	100.00
	On cover		1,250.
a.	black, rouletted 12½	100.00	100.00
	On cover		1,250.
b.	black, rouletted 11½ by 12½	100.00	100.00
	On cover		1,250.
c.	black, rouletted 12½ by 11½	100.00	100.00
	On cover		1,250.
	Sheet of 4, 1 each Nos. LOX8, LOX8a-LOX8c	1,250.	
d.	black, rouletted 11½ and 12½ compound by 11½	250.00	150.00
e.	black, rouletted 11½ and 12½ compound by 12½	250.00	150.00
	Sheet of 4, 1 each Nos. LOX8a, LOX8c, LOX8d-LOX8e	1,500.	
f.	black, rouletted 16½	300.00	300.00
	On cover		1,750.
g.	black, rouletted 16½ on 3 or 4 sides		

Gauge of rouletting on Nos. LOX8d and LOX8e transitions about one-quarter of way across top edge of seal. A sheet of 4 of No. LOX8f exists and is in the Luff reference collection of the Philatelic Foundation. No. LOX8g is unique.





TSS9

Solid lines above and below "OFFICIALLY SEALED."

*Rouletted 12½, 16½ in black between*

L.OX9 TSS9 black 500.00 500.00  
On cover







TSS10

Dotted lines above and below "OFFICIALLY SEALED."

**Rouletted 12½ in black**

LOX10 TSS10 **black, pink** 500.00 750.00  
 a. Dot after "OFFICIALLY" 1,500.

**Rouletted 11½, 12½ or 16½ in black**

LOX11 TSS10 **black, rouletted 12½ at top and side** 2.00 75.00  
 On cover 1,000.  
 Sheet of 4 15.00  
 a. Double impression 400.00  
 Sheet of 4 2,000.  
 b. Double impression, one inverted 400.00  
 c. Dot after "OFFICIALLY" 4.00 150.00  
 On cover 1,500.  
 Sheet of 4, one seal with dot 12.50  
 d. **black, rouletted 11½ at top or bottom** 200.00  
 e. **blue, rouletted 11½ at top or bottom** 2,500.  
 f. **black, rouletted 11½ at top and side** 100.00  
 Sheet of 4 1,500.  
 g. **black, rouletted 12½ by 11½** —  
 h. **black, rouletted 16½ at top or bottom** 250.00  
 Sheet of 2, both seals with dot 1,750.  
 Sheet of 2, tete beche —  
 i. **black, rouletted 16½ at top and side** 250.00

Dyed examples of No. LOX11 are frequently misrepresented as No. LOX10.

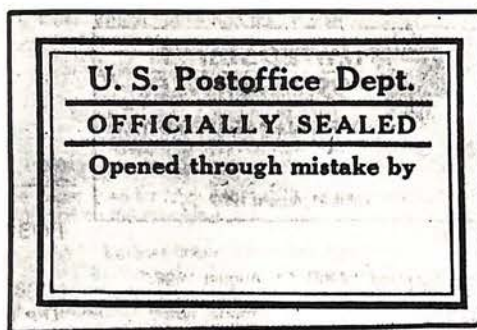


LOX10 \$500 Paid for RUBY STAMPS





LOX12 NH



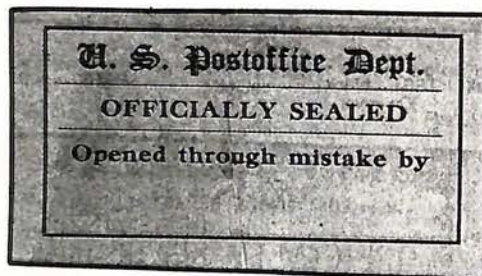
TSS11

Printed and distributed by The Lemoyne Supply Co.,  
Lemoyne, Pa.

Nos. LOX13 and LOX13a have thin lines above and below  
37 1/2mm long "OFFICIALLY SEALED"

LOX12 TSS11 black	250.00	—
On cover		
LOX13 TSS11 blue	750.00	—
a. black		





TSS13

LOX15 TSS13 black	1,250.	—
On cover		2,000.

No. LOX15 unused is valued with small faults and crease.  
See No. LOX29 for a similar design in blue.

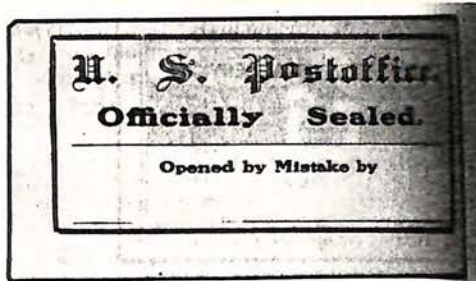


LOX 17



200

200



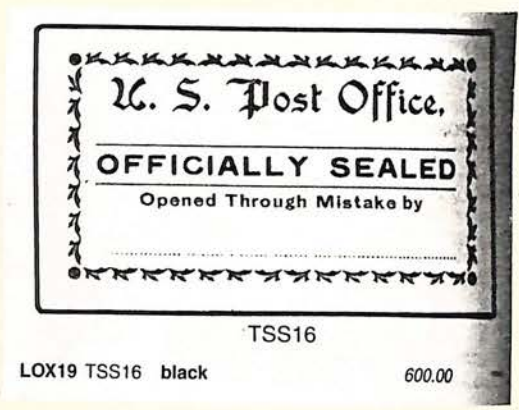
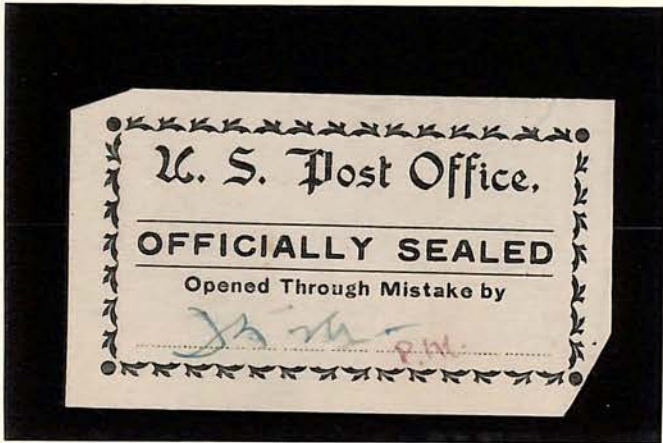
TSS15

LOX17	TSS15	dark blue	100.00	200
		On cover		1,000
	a.	Printed on both sides	1,750.	
	b.	2mm between "y" & "S," no period after "d"	250.00	400
LOX18	TSS15	black	300.00	
		On cover		1,200



100 -





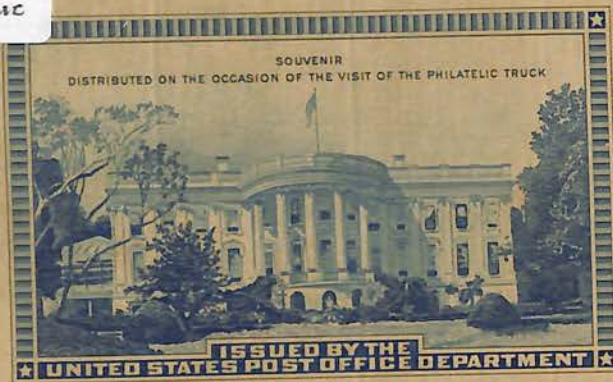
TSS16

LOX19 TSS16 black

600.00



WITH GUM  
\$50  
PHILATELIC  
TRUCK







MEXICO OFF. SEALED

Price \$6.00



Item No. GK-104A



**AMERICAN EXPEDITIONARY FORCES**

Blue Envelope Authorized by Paragraph 10, G. O. No. 13

Must not be used for money or valuables. Cannot be registered. Not to be censored regimentally but liable to censorship at the Base.

**SOLDIER'S LETTER.**

More than one letter may be sent in this envelope. In this case, it should be addressed, "Base Censor."



I certify that the enclosed letter or letters refer to personal or family matters only, and that they contain no reference to military or other matters forbidden by censorship regulations.

Address only.

(Name) Edward Rottenberg

Mrs Edward Rottenberg

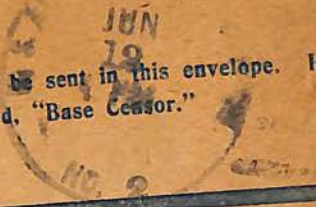
**AMERICAN EXPEDITIONARY FORCES**

Blue Envelope Authorized by Paragraph 10, G. O. No. 13

Must not be used for money or valuables. Cannot be registered. Not to be censored regimentally but liable to censorship at the Base.

**SOLDIER'S LETTER.**

More than one letter may be sent in this envelope. In this case, it should be addressed, "Base Censor."



I certify that the enclosed letter or letters refer to personal or family matters only, and that they contain no reference to military or other matters forbidden by censorship regulations.

Address only.

(Name) Raymond R. Kimball

Rank Sgt Co

Countersigned: Herbert

Rank 2nd Lt

Co. B, 3

H. C. 116

Mrs. L. A. Kimball  
121 Willard Ave

**AMERICAN EXPEDITIONARY FORCES**

Blue Envelope Authorized by Paragraph 10, G. O. No. 13

Must not be used for money or valuables. Cannot be registered. Not to be censored regimentally but liable to censorship at the Base.

**SOLDIER'S LETTER.**

More than one letter may be sent in this envelope. In this case, it should be addressed, "Base Censor."



I certify that the enclosed letter or letters refer to personal or family matters only, and that they contain no reference to military or other matters forbidden by censorship regulations.

Address only.

(Name) Lucienne Fillard

Rank 1st Lt USA

Countersigned: Herbert

Rank 1st Lt USA

Miss Lucienne Fillard

15, Rue Pierre Lereux

Paris

H. C. 116



Pat. H. C. McC...  
146...  
112 Saitery Train  
C.F.  
2. P.O. No.



SOLDIERS  
MAIL



*Friedel*  
Mrs. Geo. E. McC...  
~~1301 Siffert Rd. N.E.~~  
~~...~~  
Ravenna  
Ohio

AMERICAN EXPEDITIONARY FORCES

Blue Envelope Authorized by  
Paragraph 10, G.O. No. 13

Must not be used for money or valu-  
ables. Cannot be registered. Not to be  
censored regimentally but liable to censor-  
ship at the Base.

I certify that the enclosed letter or letters  
refer to personal or family matters only, and  
that they contain no reference to military or  
other matters forbidden by censorship regu-  
lations.

(Name) *Harry J. ...*

SOLDIER'S LETTER.

More than one letter may be sent in this envelope.  
In this case it should be addressed, "Base Censor."

Address only.

*Jessie Hammond*  
*1762 Pine St.*

AMERICAN EXPEDITIONARY FORCES

Blue Envelope Authorized by  
Paragraph 10, G.O. No. 13

Must not be used for money or valu-  
ables. Cannot be registered. Not to be  
censored regimentally but liable to  
censorship at the Base.

I certify that the enclosed letter or  
letters refer to personal or family matters  
only, and that they contain no reference  
to military or other matters forbidden  
by censorship regulations.

(Name) *R. R. Kimball*

Rank *Reg. Sup. Surg.*

Countersigned: *[Signature]*  
Rank *2nd Lt.*

SOLDIER'S LETTER.

More than one letter may be sent in this envelope. In  
this case, it should be addressed "Base Censor."

Address only.

*Mrs L. G. Kimball*  
*121 Willard Ave*  
*Bloomfield*  
*New Jersey*  
*U.S.A.*