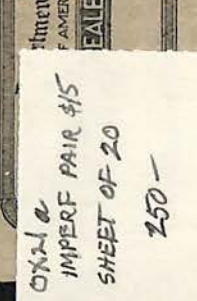
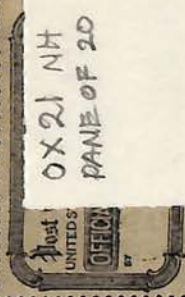


Ox21
PAGE OF 20



Ox21 a
IMPERF PAIR \$15
SHEET OF 20
250-



OX 21 NH
PAGE OF 20



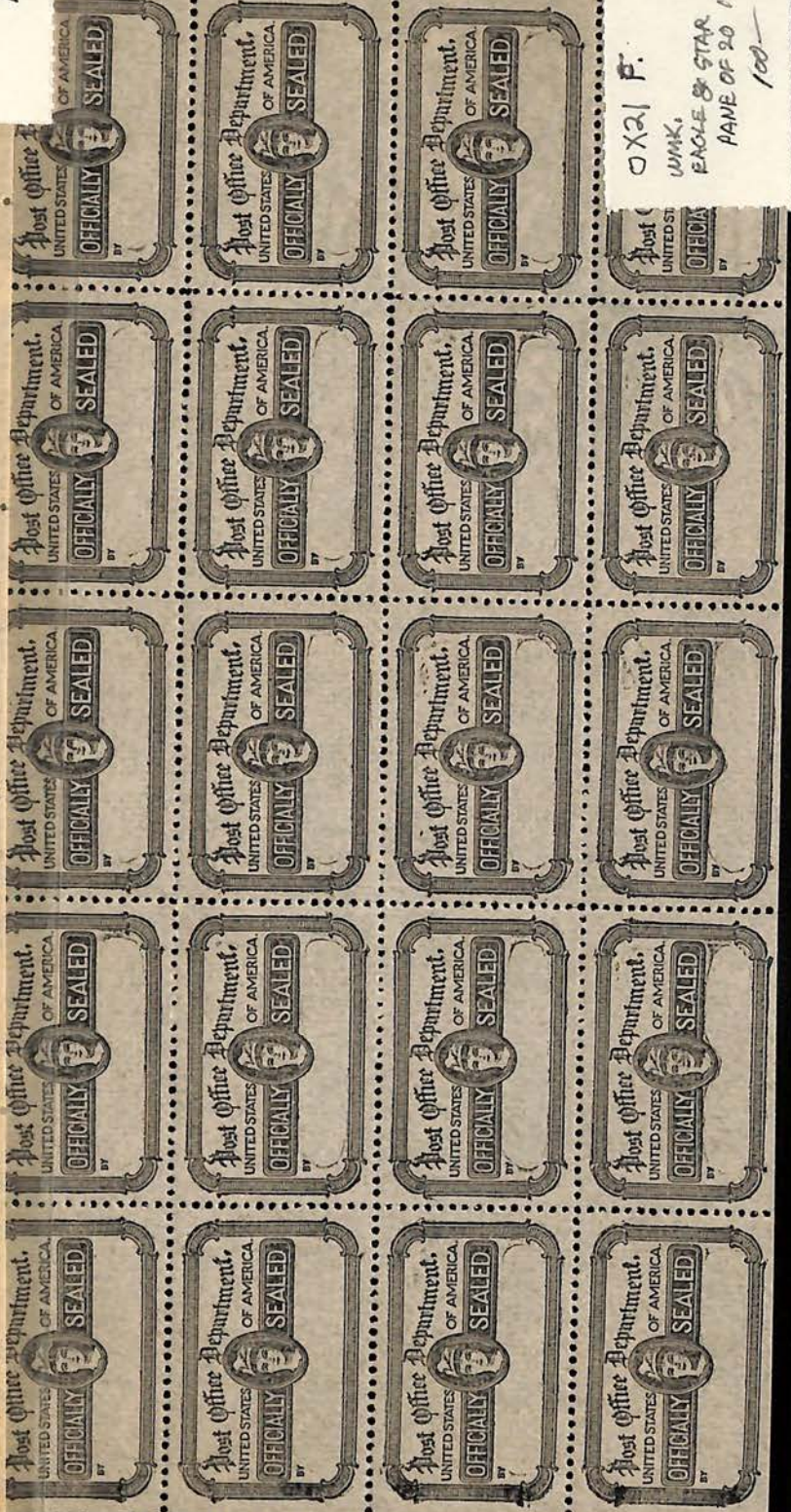


OX 21 NH
PANE OF 20

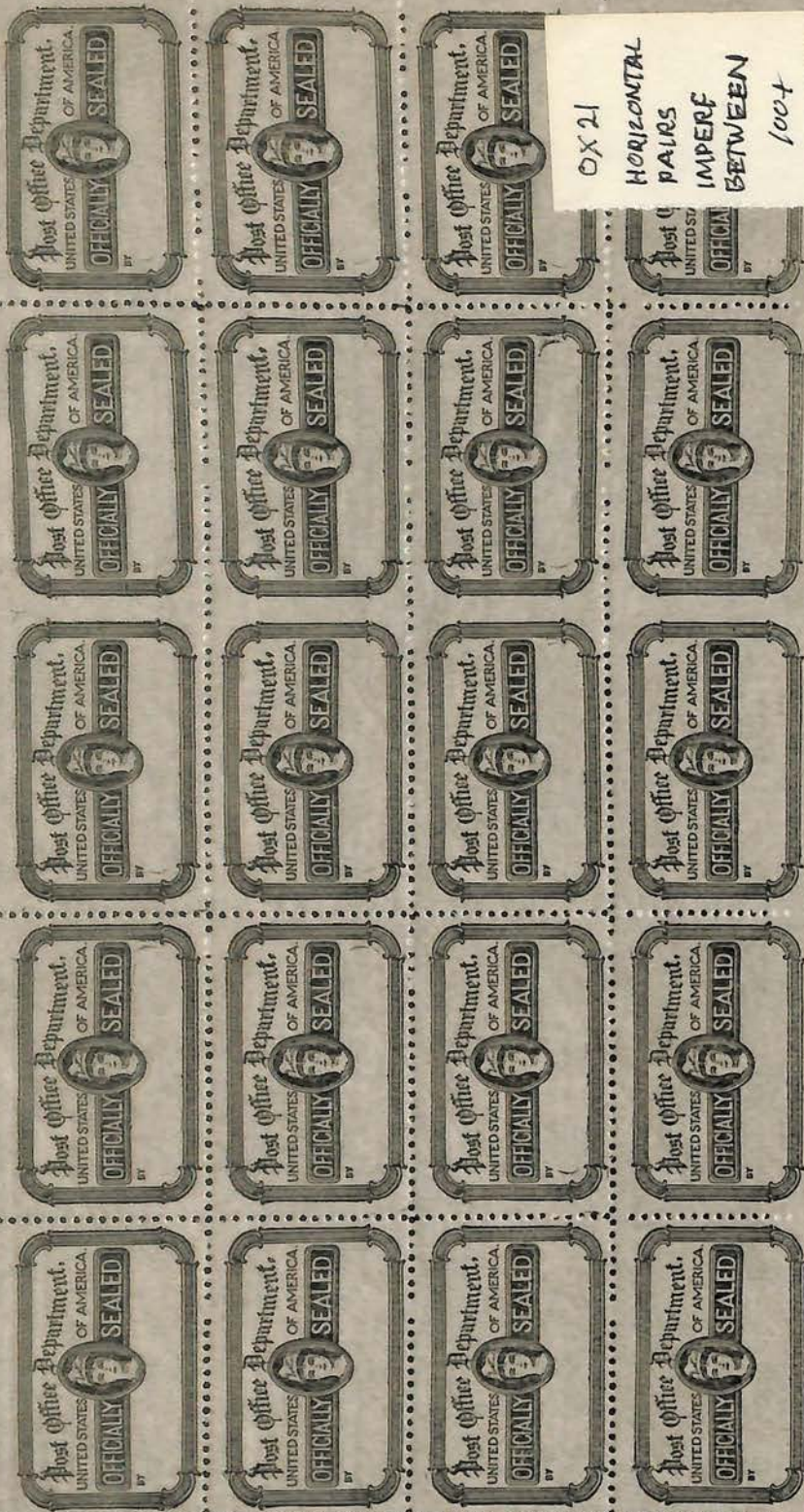




O X 21 F. NH
WMK. WITH EAGLE
PAGE OF 20
150-



O X 21 F.
WMK.
EAGLE & STAR
PAGE OF 20 NH
100-



OX 21
HORIZONTAL
PAIRS
IMPERF
BETWEEN
1004

2-10709



OX 21 h.
complete
pane of 20
UMK. OF EAGLE
300-
VERTICAL PAIRS
IMPERF. HORIZ.

0x23a 12x 8 1/2
PANE OF 20
w/wmkd STAR & EAGLE
IN SHEET
NH #180

WM Eagle

5-10709



0x21 J.
W/MK
CERTIFICATE BOND
NH PANE OF 20
300-



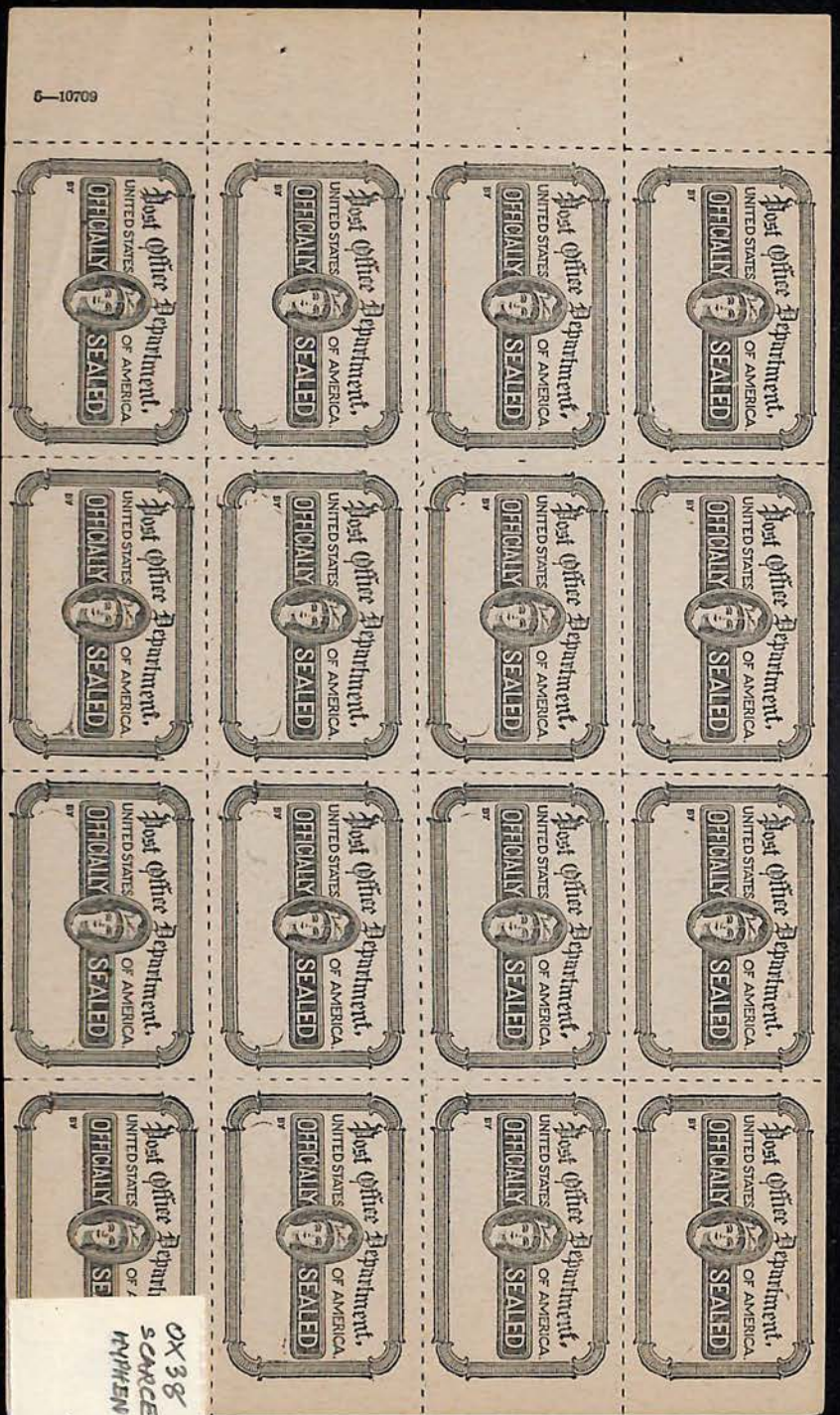


OX30
12 1/2 x 8 1/2

OX33
8 1/2 x 8
SHEET OF 20 NH
OPACUE



OX 38 NH
 THICK GAY
 SOFT PAPER
 PANE OF 20



6-10709

OX 38 NH
 SCARCE PANE/16
 IN WHEN HOLE 9/2
 450-

OX35

PERF. 5 1/2
3.50



OX28 ✓

PERF. 12
.40



OX38

HAPHEN
HOLE 9 1/2
12.50





OX21
PERF 12
VERT. PAIR
IMPERF
BETWEEN



18
MAR 8 1949
SAN FRANCISCO

RECEIVED
AT YOUR OFFICE



OX 22
P/ 12x9
7.50 ea.



OX 27
PERF. 11 1/2
17.50 ea.
122.50



OX 28 .40
MEDIUM, OPAQUE
EGG-COLORED
PAPER
PERF. 12



OX 28
PERF. 12

OX 21



OX 21 c
2 HORIZ. PAIRS
IMPERF. VERT.
PERF. 12
20 pair

OX 21 b
2 VERTICAL PAIRS
IMPERF. HORIZ.
20-
PERF. 12



OX 21 .20
+ OX 21 J \$10.00
VALUES
PRICE
THIN, WHITE
CRISP PAPER
BOTTOM 2 STAMPS
WMK.

OX 21 J.
WMKD.
BOND
10-

OX 21 d.
VERTICAL PAIR
IMPERF
BETWEEN

OX 21 h.
WMK. STAR
& EAGLE
VERTICAL PAIRS
IMPERF
HORIZONTALLY



OX 23
12 X 8 1/2
2 STAMPS
WMK.
OX 23 F.

12 X 8 1/2
2 STAMPS



OX22
12 x 9



THIN WHITE
CRISP PAPER
OX23 2.50
12 x 8 1/2



OX23a
WMK.
12 x 8 1/2

OX25 -
GREY BLACK
P. 8 1/2



OX28
P. 12



OX30 1.50
2 1/2 x 8 1/2
GREY BL

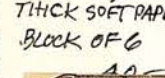


OX29
P. 12 1/2



OX31
PERF. 8 1/2
THICK SOFT PAPER
BLACK OF G

OX31 1.50 ea.
PERF. 8 1/2
OPAQUE
EGG-COLORER
PAPER



THICK, GREY
VERY SOFT PAPER
PERF. 12 1/2
OX 34 \$1.00



OX 35
PERF. 8 1/2
THICK
VERY SOFT PAPER
\$5



THICK, GREY
SOFT PAPER
PERF. 8 1/2



OX 36
12 1/2 x 8 1/2

OX 38
HYPHEN HOLE
9/2
IMPERF AT SIDES
\$15 ea.



MEDIUM THICK
WHITE PAPER
HYPHEN HOLE 9/2
IMPERF AT SIDES
OX 39 .25



PERF.
8 1/2

16-56164-1 GPO

16-56164-1 GPO

16-56164-1 GPO



643-10-56164-1 GPO

643-10-56164-1 GPO





9 x 8 1/2
UNLISTED



FULL O.G./NH
VERY UNUSUAL
PRECANCEL

U.S. Naval Base,
Guantanamo Bay, Cuba.

1930
HARTFORD
CONNECTICUT



BY AIR MAIL
PAR AVION

Clarence T. Munson
93 Oakwood Ave.,
W. Hartford, Conn.
U.S.A.

VIA AIR MAIL



From
C.S. M. Whortie
Commander U.S.N.

12500



Fosalba y Cots, Senc. C.

IMPORTADORES DE FERRETERIA
LOZA Y CRISTALERIA
APARTADO 69
MANZANILLO, CUBA



Pioneer Merchandise Co. Inc.
298 Broadway

ADDRESS
YOUR MAIL
TO
STREET AND
NUMBER



NEW YORK

TRY 925
Broadway

AFTER 3 DAYS RETURN

David Nelson
75 Main St
LODI, N. J.



Y-217

Shure Brothers Company
Chicago
Illinois



en
N.Y.

PFC Norman De
US MAIL
Post Signal
Fort Richard
APO # 949 7/2 PM,
Seattle, Wash.



COMPANY,



Mr & Mrs B R Swanger
18097 Sorrento Ave.,
Detroit 35, Michigan

AIR MAIL
(Cargo Letter)



F. F. Yonkman, M.D.

I B A

SUMMIT, NEW JERSEY

After 5 days, return to
A. ROCKAFELLER CO.,
39 West 4th St.,
MOUNT CARMEL, PA.

USA DRAW 94



NO/RECOR

APO 9

Shure Brothers,
Chicago, Illinois

EXAMINER 5517

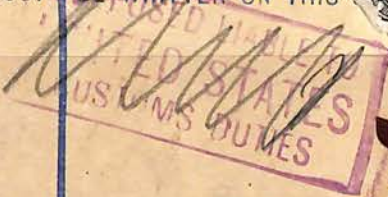
space is reserved
for Official
Registration Label

H
on back
of Sen

R BOURNEMOUTH 1
No 6786

REGISTERED LETTER.

THIS LETTER MUST BE GIVEN TO AN OFFICER
AT OFFICE TO BE REGISTERED, AND A R
OBTAINED FOR IT.
ADDRESS MUST BE WRITTEN ON THIS



Messrs. F.N. MANROSS, & COMPANY
BRISTOL,
CONN.,
U.S.A.

COLLECT 10c POSTAGE
FOR CUSTOMS SERVICE



EXAMINER 5517

Western California Telephone Company

15900 SAN JOSE-LOS GATOS ROAD
LOS GATOS, CALIFORNIA

WATCH OUT FOR US
GIVE US A BRAKE



KISER PRINTING CO., INC.

PRINTERS AND
BINDERS
3449-51 N. WESTERN AVENUE
CHICAGO



RETURNED
TO
WRITER
UNCLAIMED.
Canal Station
Chicago, Ill.

for W J Bureau

Veterans of Foreign Wars of the United States
111 N. Canal St.,
Chicago, Ill.

WAR PRODUCTION BOARD
WASHINGTON, D. C.

OFFICIAL BUSINESS



PENALTY FOR PRIVATE USE TO AVOID
PAYMENT OF POSTAGE, \$300

DEFENSE SAVINGS
BONDS AND STAMPS



Shure Brothers,
Chicago,
Illinois

opened by H. Shure Co.

11200

BROWN-EBINGER
RADIO CO.
3924 Washington Blvd.
ST. LOUIS, MO.



BUY U. S. SAVINGS

BONDS
ASK YOUR
POSTMASTER



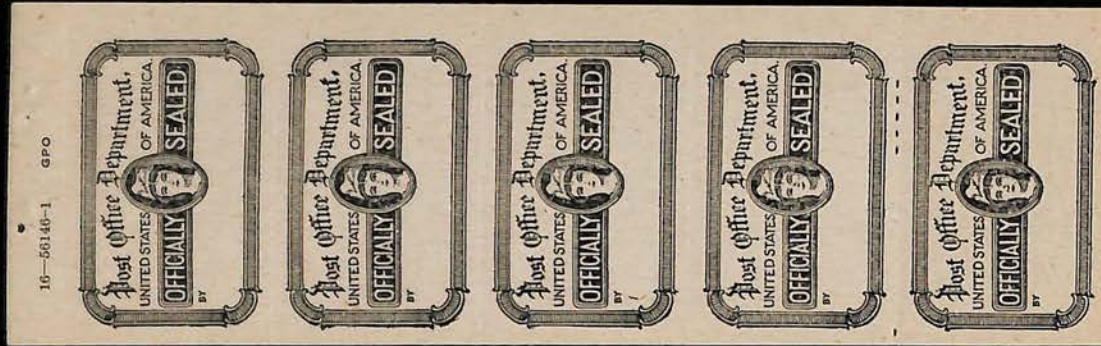
Chicago, Ill. No. 48
Mr. Robert
900

215 W. Spruce

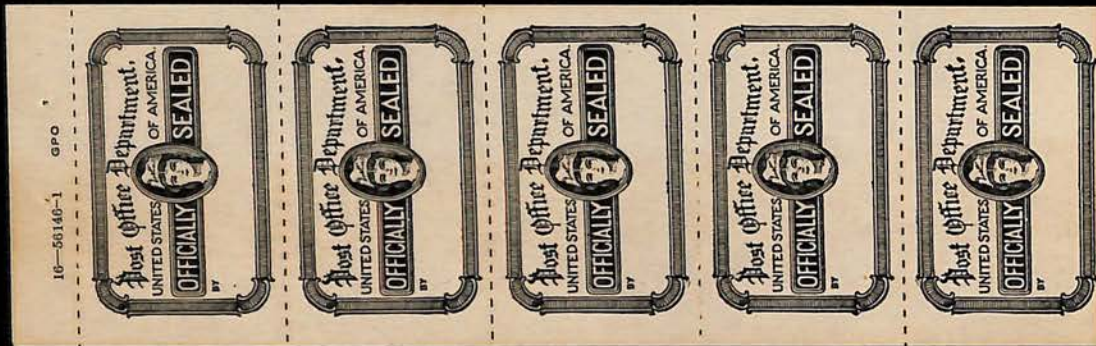
NOT THERE B2017

OX-38

VERY RARE, only 6 panes known
PLATE NO. 16-56146-1

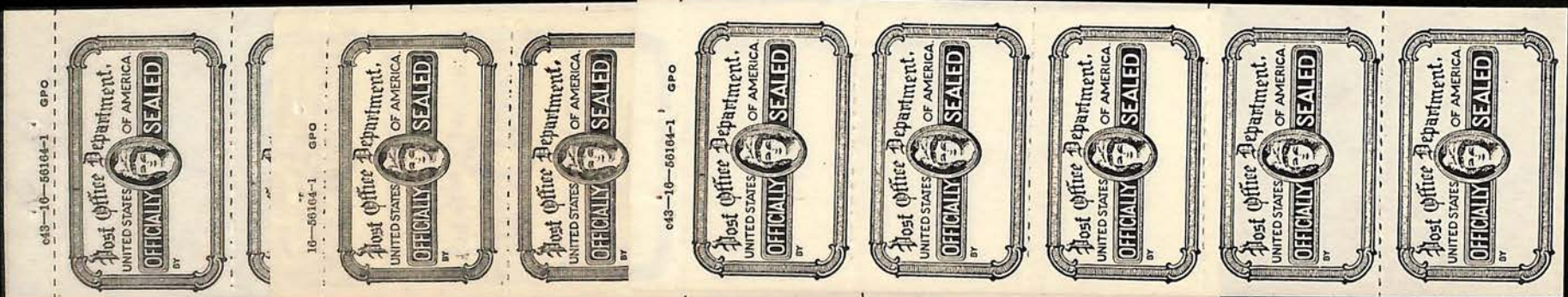


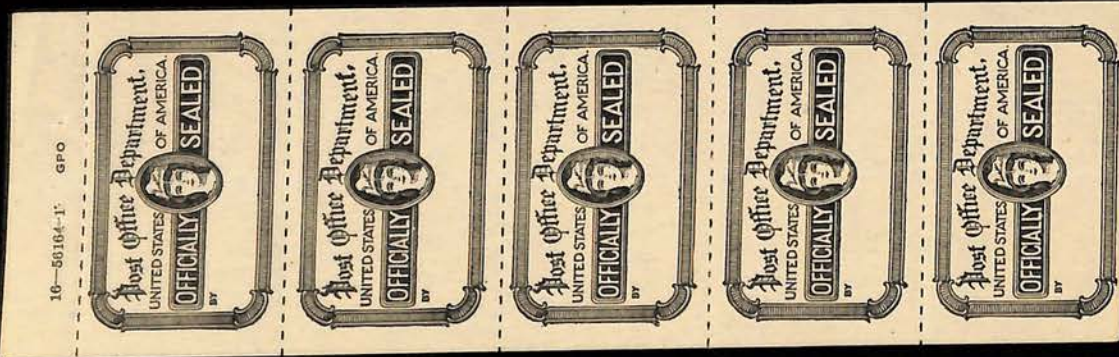
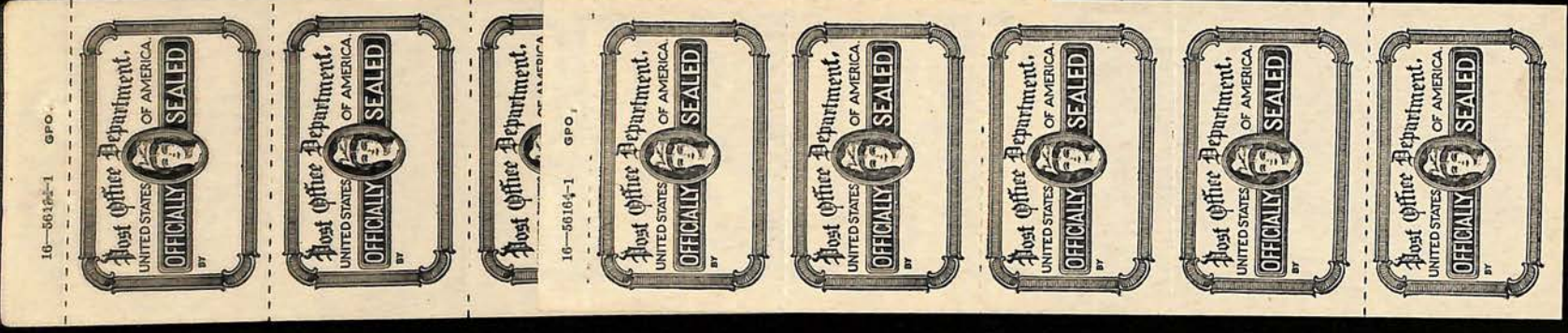
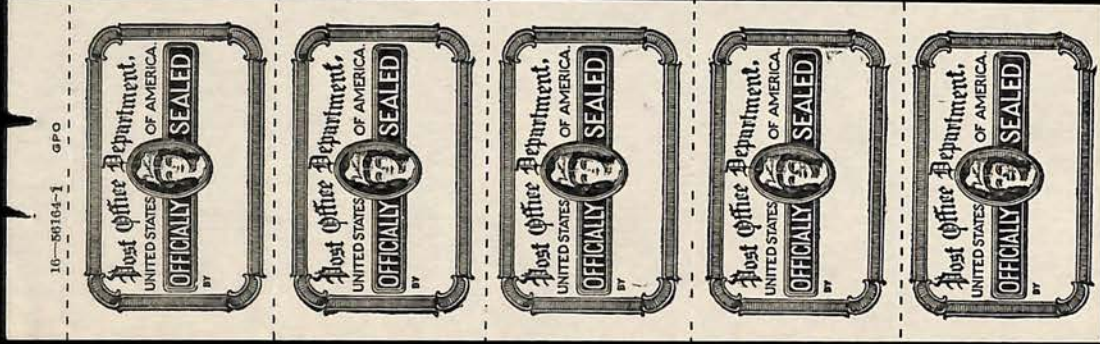
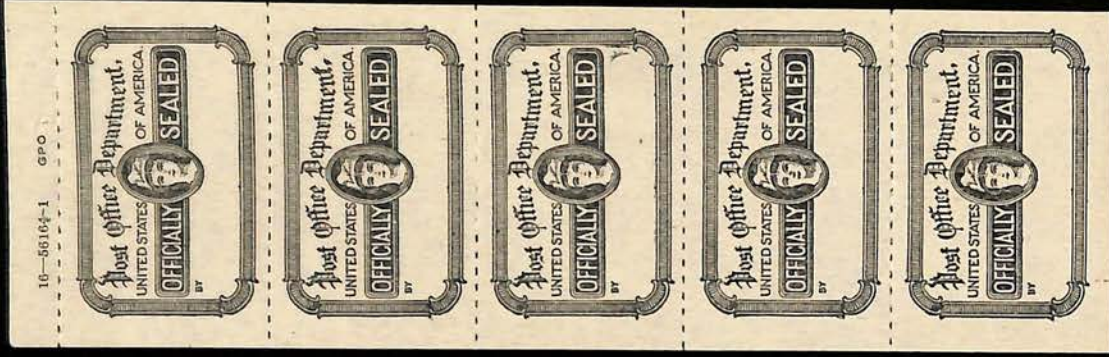
16-56146-1
RARE
PLATE NO.

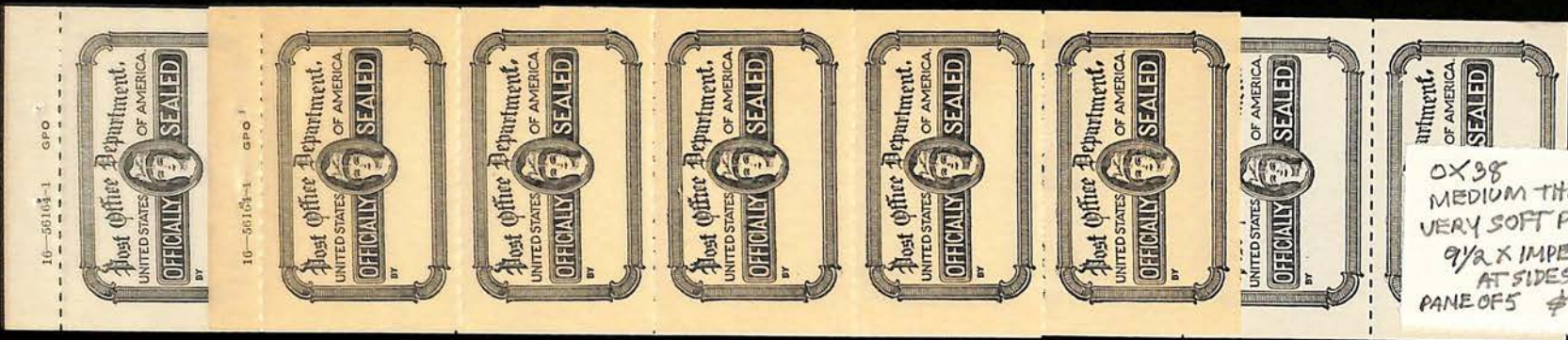


16-56146-1
RARE
PLATE NO.

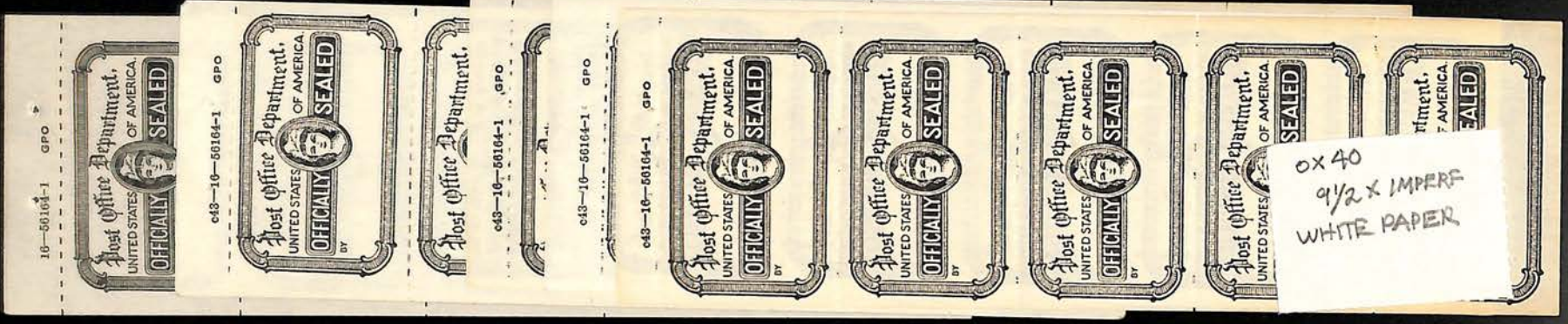
16-56164-1
NORMAL
PLATE NO.



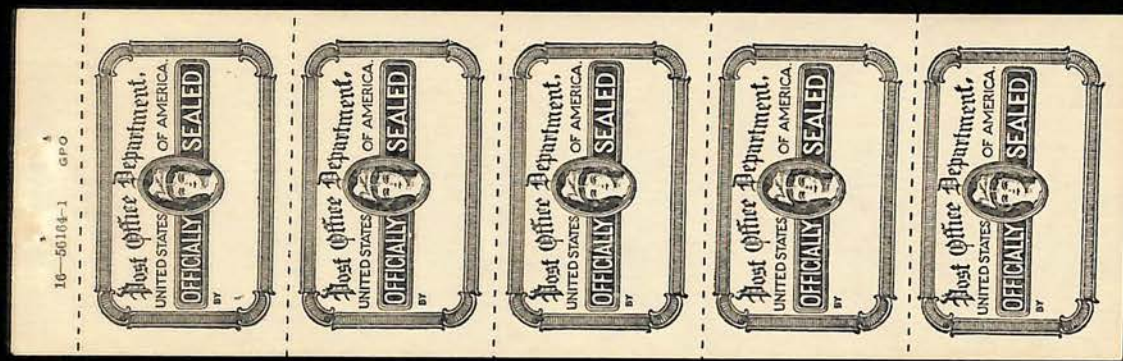




OX 38
MEDIUM THICK
VERY SOFT PAPER
9/2 X IMPERF
AT SIDES
PANE OF 5 \$200



OX 40
9/2 X IMPERF
WHITE PAPER



OX 40 a
WHITE PAPER
2 PANES OF 5
VERTICAL PAIRS
IMPERF BETWEEN



OX 40
WHITE PAPER,
IMPERF PAIRS



PERF. 8 1/2 X 12 — w/ ALT. #



PAPER FOLD

107 OX 25 PERF. 8 1/2 Price . 50



Post Office Seals

1919

Perf. 12, 12 1/2



Full pane of 20



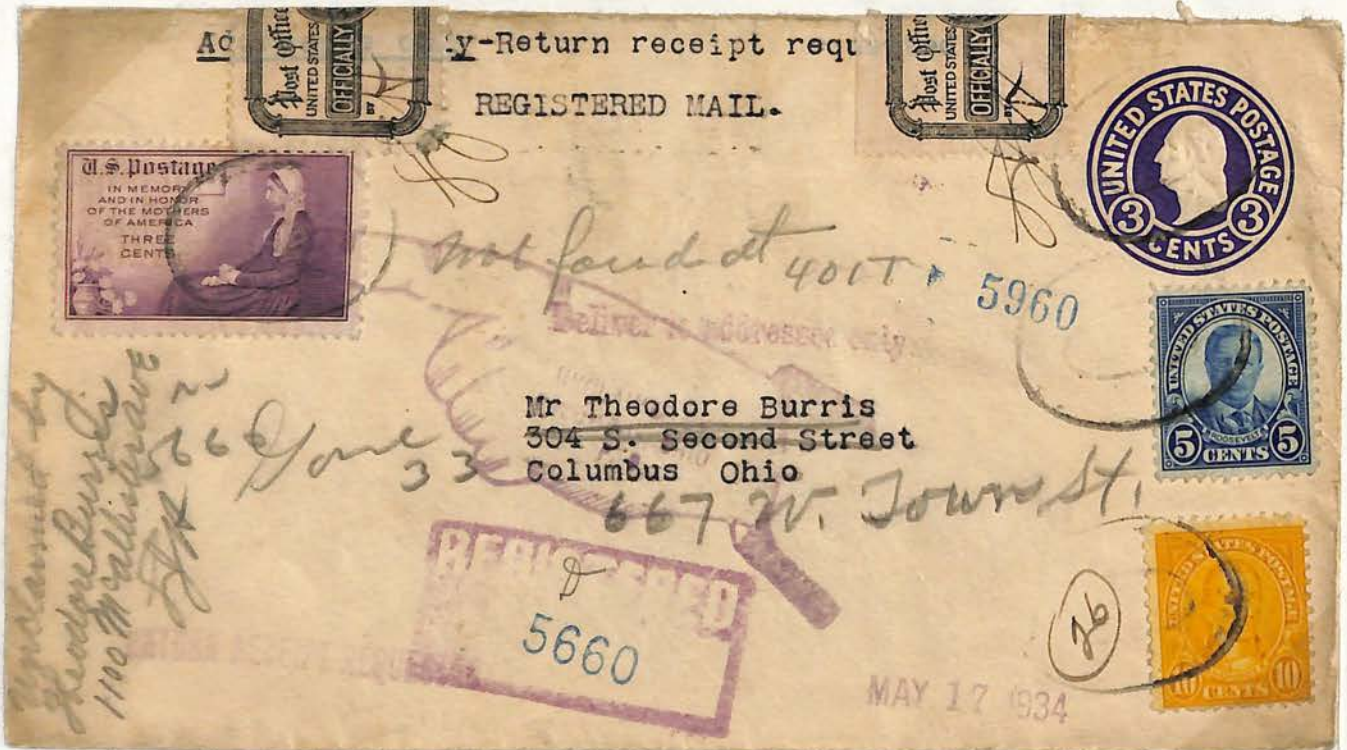
Perfs often rough
Perf. 12 x 12 1/2

Post Office Seals

Foreign envelope sealed at New York on 2/1/1938 probably by Postal Officials or Customs agents.



Registered letter (1934) with incorrect address, apparently opened and resealed by postal workers. (note initials)



Post Office Seals

1942 Letter from England "Opened by Examiner 4061" during World War II. The Post Office Seal would have been applied after it arrived in Washington to reseal the flap.



1919 Seal that is perf. 12 vertical and imperf. horizontal.



Post Office Seals

1936

Perf 12 x 8 1/2 or 9



1947

Perf. 8 1/2



1949

Hyphen hole perf. 9 1/2



From envelope flap



98
Officially Sealed
Grand Central
Damaged by Canselling Machine



Mr. Anson R. Thompson,
403 River Street,
Troy,
New York.

DX 28
CX 28



with
Seal
on back

GENERALNA REPREZENTACJA
INT. KAZIMIERZ SKARZYŃSKI
Warszawa, Adresyorka 6 tel. 822-26

SEVEN UNITED STATES
SEVEN UNITED STATES
SEVEN UNITED STATES

21 MAR 20
21 MAR 20

Messrs. Jones and Lewis

Polcom

Springfield

Shawnee Zichm

Kontrola dewizowa
przeprowadzona.
Contrôle de devises
effectué.

RECEIVED
MAR 22
2669

U.S. CUSTOMS
FREE OF DUTY
J. H. HARRIS
POST OFFICE
NEW YORK

5
5
5
5

OX 21 A, 12
4 HORIZ. PAIRS
IMPERF. VERT.
50

Post Office Department,
UNITED STATES OF AMERICA
OFFICIALLY SEALED

Department OF AMERICA SEaled
ROCK H. GROUT, P. 1
SEaled
ROCK H. GROUT, P. 1
Department OF AMERICA SEaled
ROCK H. GROUT, P. 1

18

HOOSICK FALLS
4 30 PM
AUG 11
1961
N. Y.



201 S Street
Bennington
Vermont
For
Pennycuik.

Opened by mistake
by Howard Noefaly.

Officially Sealed
Post Office Department, UNITED STATES OF AMERICA
MAR 15 1941
CHICAGO
MAR 13 1941
2304M
NORWOOD PARK ST
Received Unsealed
Irving Park Station
Irving Park Sta.
Chicago, Ill. 1941
DO NOT REMAIL IN THIS ENVELOPE OR WRAPPER
Dolores H. Mackum
2355 Norwood Avenue
Norwood Ohio
CHICAGO ILL MAR 19 1941

Post Office Department,
UNITED STATES OF AMERICA
OFFICIALLY SEALED



Mrs. J. Smith

Hillside N. Y.

122 Bailey Avenue

ALBERT TREULIEB

Gartenbaumeister

STUTTGART

Friedhof-Strasse 14

Fernsprecher 216 97



POST OFFICE DEPARTMENT

STATION

OFFICIAL BUSINESS

(No. 49)

POSTMASTER

M. O. B.

0x19
26 Paris

Post Office Seals

Designs since 1949

1949

1970

1971

1994

16-56164-1 GPO



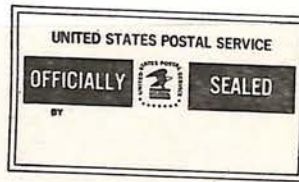
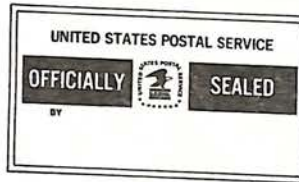
37 1/2mm
wide

c43-16-56164-1 GPO



38 1/2 mm
wide

LABEL 21, JULY 1971



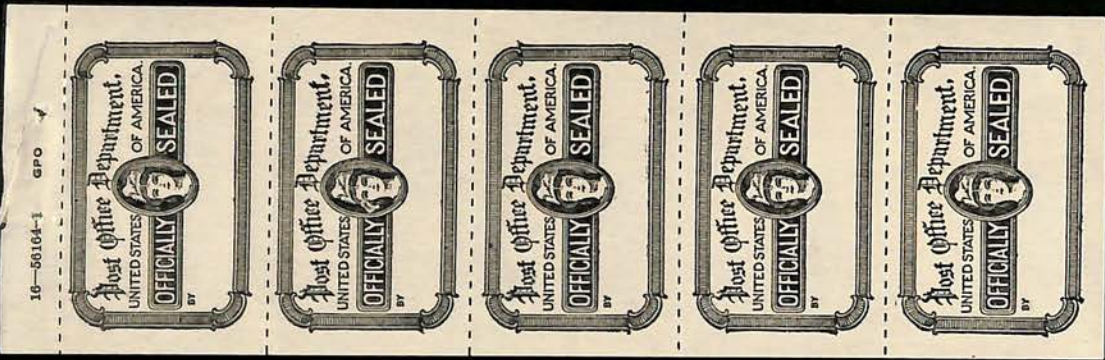
Label 21, April 1994



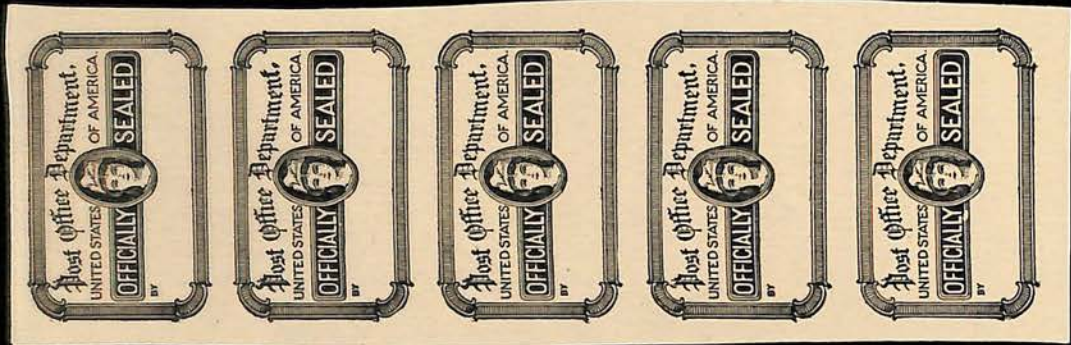
1996

Label 21, August 1996





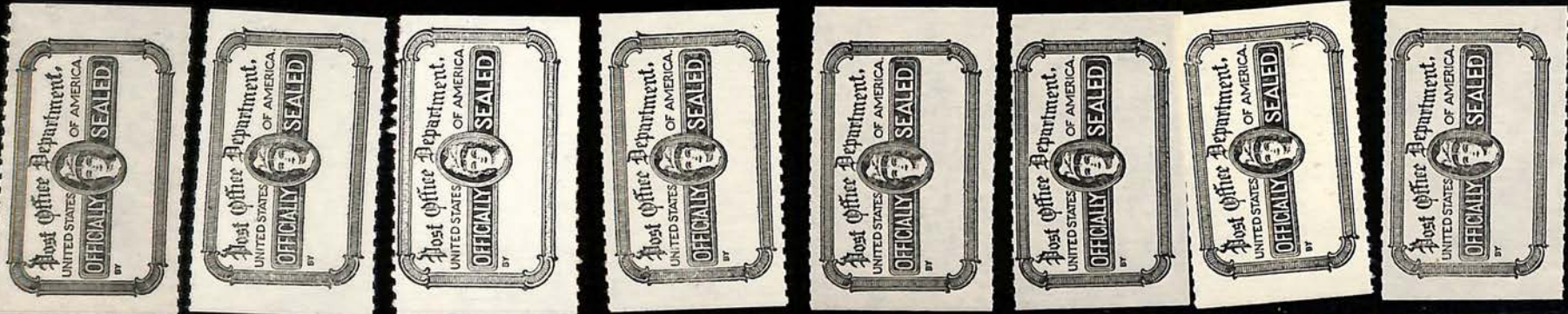
OX 39 1.25
PAGE OF 5
IMPERF AT SIDES
CREAM PAPER



OX 39 b
PAGE OF 5
IMPERF
CREAM PAPER



OX 40
MYPHEN HERE
9/2
X IMPERF
MED. THICK
WHITE PAPER



LABEL 21, JULY 1971

UNITED STATES POSTAL SERVICE

OFFICIALLY BY SEALED

LABEL 21, JULY 1971

UNITED STATES POSTAL SERVICE

OFFICIALLY BY SEALED

LABEL 21, JULY 1971

LABEL 21, JULY 1971

UNITED STATES POSTAL SERVICE

OFFICIALLY BY SEALED

UNITED STATES POSTAL SERVICE

OFFICIALLY BY SEALED

UNITED STATES POSTAL SERVICE

OFFICIALLY BY SEALED

UNITED STATES POSTAL SERVICE

OFFICIALLY BY SEALED

UNITED STATES POSTAL SERVICE

OFFICIALLY BY SEALED

OX41
ROULETTED 9/2
X IMPERF

LABEL 21, JULY 1971

UNITED STATES POSTAL SERVICE

OFFICIALLY BY SEALED

UNITED STATES POSTAL SERVICE

OFFICIALLY BY SEALED

LABEL 21, JULY 1971

UNITED STATES POSTAL SERVICE

OFFICIALLY BY SEALED

UNITED STATES POSTAL SERVICE

OFFICIALLY BY SEALED

UNITED STATES POSTAL SERVICE

OFFICIALLY BY SEALED

UNITED STATES POSTAL SERVICE

OFFICIALLY BY SEALED

UNITED STATES POSTAL SERVICE

OFFICIALLY BY SEALED

OX42
ROULETTED 6/2
X IMPERF

LABEL 21, JULY 1971

UNITED STATES POSTAL SERVICE

OFFICIALLY BY SEALED

UNITED STATES POSTAL SERVICE

OFFICIALLY BY SEALED

UNITED STATES POSTAL SERVICE

OFFICIALLY BY SEALED

UNITED STATES POSTAL SERVICE

OFFICIALLY BY SEALED

UNITED STATES POSTAL SERVICE

OFFICIALLY BY SEALED

OX43
HYPHEN HOLE 7
X IMPERF
PAGE OF 5 99
16 PAGES 9/44

LABEL 21, JULY 1971

UNITED STATES POSTAL SERVICE

OFFICIALLY BY SEALED

LABEL 21, JULY 1971

LABEL 21, JULY 1971

LABEL 21, JULY 1971

UNITED STATES POSTAL SERVICE

LABEL 21, JULY 1971

UNITED STATES POSTAL SERVICE

OFFICIALLY BY SEALED

UNITED STATES POSTAL SERVICE

OFFICIALLY BY SEALED

UNITED STATES POSTAL SERVICE

OFFICIALLY BY SEALED

UNITED STATES POSTAL SERVICE

OFFICIALLY BY SEALED

UNITED STATES POSTAL SERVICE

OFFICIALLY BY SEALED

LABEL 21, JULY 1971

UNITED STATES POSTAL SERVICE

OFFICIALLY BY SEALED

LABEL 21, JULY 1971

LABEL 21, JULY 1971

UNITED STATES POSTAL SERVICE

OFFICIALLY BY SEALED

UNITED STATES POSTAL SERVICE

OFFICIALLY BY SEALED

UNITED STATES POSTAL SERVICE

OFFICIALLY BY SEALED

UNITED STATES POSTAL SERVICE

OFFICIALLY BY SEALED

UNITED STATES POSTAL SERVICE

OFFICIALLY BY SEALED

PERF. 12/2 X IMPERF
OX 45

LABEL 21, JULY 1971



LABEL 21, JULY 1971



LABEL 21, JULY 1971



OX47
BLUISH BLACK
SELF-ADHESIVE

LABEL 21, JULY 1971



OX48
GRAY
SELF-ADHESIVE
37 x 21mm

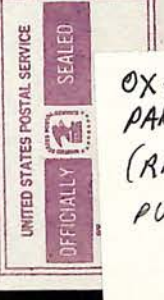
LABEL 21, JULY 1971



LABEL 21, JULY 1971



LABEL 21, JULY 1971



OX50 —
PAGE OF 5
(RARE)
PURPLE

LABEL 21, JAN. 1992



LABEL 21, JAN. 1992



OX51 BLACK
SELF-ADHESIVE
44mm x 22mm

LABEL 21, JAN. 1992



LABEL 21, JAN. 1992



OX52 BLACK
SELF-ADHESIVE
41 x 21mm

UNITED STATES POSTAL SERVICE

OFFICIALLY

BY



SEALED

UNITED STATES POSTAL SERVICE

OFFICIALLY

BY



SEALED

UNITED STATES POSTAL SERVICE

OFFICIALLY

BY



SEALED

LABEL 21, JULY 1971

UNITED STATES POSTAL SERVICE

OFFICIALLY

BY



SEALED

UNITED STATES POSTAL SERVICE

OFFICIALLY

BY



SEALED

UNITED STATES POSTAL SERVICE

OFFICIALLY

BY



SEALED

UNITED STATES POSTAL SERVICE

OFFICIALLY

BY



SEALED

UNITED STATES POSTAL SERVICE

OFFICIALLY

BY



SEALED

UNITED STATES POSTAL SERVICE

OFFICIALLY

BY



SEALED

LABEL 21, JULY 1971

UNITED STATES POSTAL SERVICE

OFFICIALLY

BY



SEALED

UNITED STATES POSTAL SERVICE

OFFICIALLY

BY



SEALED

DX 43

MISPERF ERROR
W/COMBO
IMPERFS BETWEEN

DX 43

HYPHEN HOLE 7
X IMPERF
2 PAIRS IMPERF
BETWEEN

UNITED STATES POSTAL SERVICE

OFFICIALLY

BY



SEALED

UNITED STATES POSTAL SERVICE

OFFICIALLY

BY



SEALED

UNITED STATES POSTAL SERVICE

OFFICIALLY

BY



SEALED

LABEL 21, JULY 1971

UNITED STATES POSTAL SERVICE

OFFICIALLY

BY



SEALED

UNITED STATES POSTAL SERVICE

OFFICIALLY

BY



SEALED

Label 21, August 1996

UNITED STATES
POSTAL SERVICE®

OFFICIALLY SEALED BY:

Label 21, August 1996

UNITED STATES
POSTAL SERVICE®

OFFICIALLY SEALED BY:

UNITED STATES
POSTAL SERVICE®

OFFICIALLY SEALED BY:

UNITED STATES
POSTAL SERVICE®

OFFICIALLY SEALED BY:

UNITED STATES
POSTAL SERVICE®

OFFICIALLY SEALED BY:

UNITED STATES
POSTAL SERVICE®

OFFICIALLY SEALED BY:

OX 54

SELF-ADHESIVE

Label 21, April 1994

UNITED STATES
POSTAL SERVICE™

OFFICIALLY SEALED

BY

UNITED STATES
POSTAL SERVICE™

OFFICIALLY SEALED

BY

UNITED STATES
POSTAL SERVICE™

OFFICIALLY SEALED

BY

UNITED STATES
POSTAL SERVICE™

OFFICIALLY SEALED

BY

UNITED STATES
POSTAL SERVICE™

OFFICIALLY SEALED

BY

UNITED STATES
POSTAL SERVICE™

OFFICIALLY SEALED

BY

8

OX 53

SELF-ADHESIVE