



143 L8
\$85

WELLS FARGO
VIRGINIA CITY
BLUE CAMEL
EV 150



143 L3
150



143 L3
70



143 LA
\$200



143 L2 \$900



FAKE





143 L9
30-
GENUINE



143 L1
800-



141 L2
30-

145 L2

PUBLISHERS'
PAID STAMP
W. F. & Co's

PUBLISHERS'
PAID STAMP
W. F. & Co's Express.

143 LP10
\$625-

PUBLISHERS'
PAID STAMP
W. F. & Co's Express.

144 L2
25-

FASCIMILE



143 LP1
\$375-



143 LPA
PAIR
\$100+



143 LPA
50-



143 LPA
\$50

149 LP7



143 LP5
35-



143 LP9
75-



143 LP13
10-

143 LP9
3-

143 LP9
2-



RETOUCHED
DIE
SAN FRANCISCO
12L2
PANE OF 6
(ORIGINAL DIE
SAN FRANCISCO)
EX \$300-400
PAID \$250 REEVES



pyl \$350



1890
(TB1293)

No. U312
(88)

Die 2

Fr. Brown
Type

Size C (4 1/2)

Knife 49

Scarce

WMK 8

Amber

Ex H. H.
Clifford



yp 75

ARTHUR C. BANTA, Mangr.



Victor Cyclery

1730 Lullain Street
Hughes Hotel
Tel. 196

FRESNO, CAL.



Answer may be left with
OVERMAN WHEEL CO.
LARKIN & McALLISTER ST., S.F.
THROUGH SERVICE DAILY.






SAN FRANCISCO
 SAN MATEO
 REDWOOD CITY
 PALO ALTO
 SAN JOSE
 MORGAN HILL
 GILROY
 PACHECO PASS
 SAN FELIPE
 LOS BANOS
 DOS PALOS
 FIREBAUGH
 MENDOTA
 WHITE BRIDGE
 KERMAN
 FRESNO
 FOWLER
 SELMA

ARTHUR C. BANTA,
1735 KIRKHAM STREET,
SAN FRANCISCO, CALIF.

Arthur C. Banta

122
RETOUCHED
DIE 3a
20-



ORIGINAL
DIE





Ferguson & Maens



1526
100-
CRIS. GUM



FACSIMILE



15211
90-

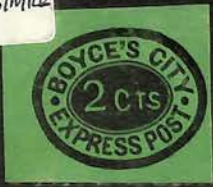


15218
\$11-





FACSIMILE



23 LI \$125-



OLD RUSS PRICE \$225 25 L6 - COVERED BY RARE



22 LI \$175



PART OF ENVELOPE



VARIETY OR FACSIMILE

36 LI 60-



70 L3 40.00



109 LI 200-

35 L4 25-



35 L7 25-



38 LI \$185



39 LI \$20

160 LI \$800



52 L2 \$100



31 L5 GENUINE 200



53 L1 C. RUSS OLD PRICE \$85



FAKES



28 L1 \$25

41 L1

FAKE

26 L1 ✓ \$150

41 L1 25-



28 L3 \$70-

28 L4 15-

26 L2 15-

28 L3

REPRINT



62 L4



28 L3 -

109 L1
500-
G. A. MILLS



61 L2 70-



70 L3 35-



61 L1 a
NH/08
PAIR
100-



1643
225-



1644?
175



X OF EXPRESS
RIGHT ARM IS
HIGHER
NONE OF THE
FAKES HAVE THIS



W. STAIT,
Of the City Despatch,
48 S. 3d St., will call for
Contributions, by authority
of the Cheap Post-
age, Committee.

W. STAIT,
Of the City Despatch,
48 S. 3d St., will call for
Contributions, by authority
of the Cheap Post-
age, Committee.

BENTLEY'S
FORGERY A



136L9



11
Perf
11



Engraved by J. W. Scott & Co., 75 and 77 Nassau St., N. Y.

27

54L1 ✓

54L1 \$50
(REAL)

proof
on card or
post card?



161L1

26L2
250



55L2
\$250



FAKES

A.M. HINKLEY'S
EXPRESS CO.
New York, N.Y.
82L1
REPRINT
ON WHITE PAPER



GENUINE
35L2 \$200
OVERPRINTED X
REGULAR RATE OF 5¢
DOUBLED TO 10¢ RATE
FOR USE IN DELIVERY
OF VALENTINES.
NEVER POSTALLY USED
FAVOR CANCEL



28L4 a
tete beche
pair
good
\$60-



75L2
RED, bluish
cut to shape
type 1 \$75

87L3 ~~60~~
\$175

87L4
22.50

87L53
~~60~~

87L6
5

87L7
2-ROSE
RED

87L8
60

87L9
3-5



87L10
12.50

87L10
40

87L11
25

87L13
20.15

87L14
9



87L16
15



87L22
~~3~~

87L23
~~7.00~~



87L17
RED BROWN
20

87L20
YELLOW
15

87L21
20

87L17
\$30

87L9
3

87L40
DATED 1868
\$65

87L25 87L24 3.75

87L26 #4
DIAGONAL LINE
OF I. OF CITY
GOING UPWARDS

87L26
5



87L51 REPRINTS

87L27
DATED 1868
20

87L35
40

87L28
12

87L29
DATED 1863
25

87L32
CUT TO SHAPE
DATED 1863
3/4

87L35
12

87L46
DATED 1868
25 40



WAVE PAPER

87L43
5

87L43
20

87L44
4

87L45
7.50

87L46
8

10



LAI PAPER

87L48
12

87L49
9

87L50
10

THIN WAVE
REPRINT
MADE FOR
J.W. SCOTT



87L53
1



IMITATION
87L58

IMITATION

IMITATION



87L59
3-



87L60
3-



87L60 3.00
O.G.



7.50



87L58
30-

8167
10-



87L61 6.50
O.G.

87L62
102

87L62 10.50
O.G.



87L64
4-



87L65
4-



87L65
16-



87L67
3-



210.00

87L70



87L70
EV 100-



87L70

87L71



87L72



87L74



59L1 & L2

EXTREMELY
RARE
used
value?



74L12



59L9 a
.40



60L2
\$85



73L1
\$85

78L1
RP

L161?



NEW YORK CITY DELIVERY COMPANY NEW YORK CITY

This real company was probably organized for local delivery of letters or circulars. They issued a prepaid stamp.



ORIGINAL

The colors:

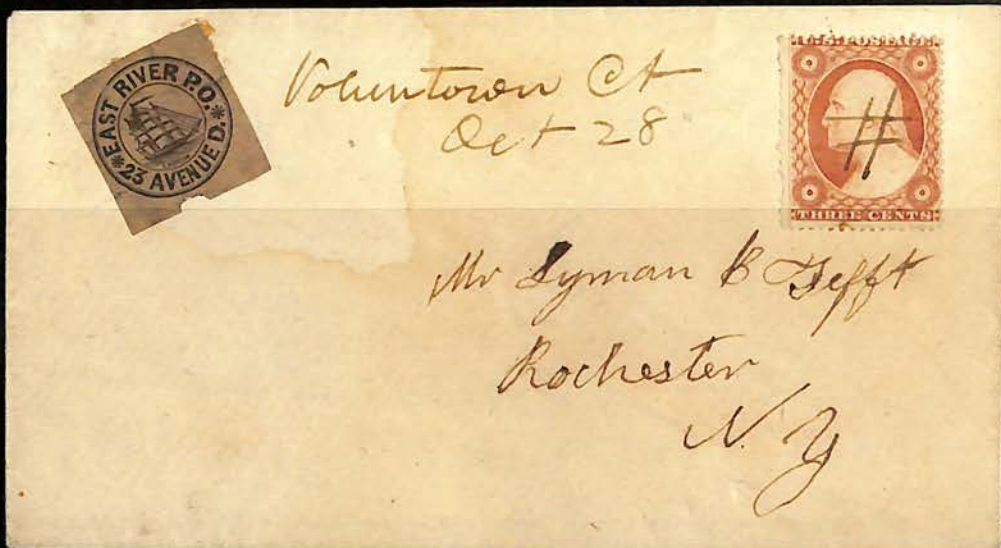
- a. On White wove paper
Black
- b. On paper colored through
Black on Hot Pink

89L1
150²

REPRO

96L2

96L1
100



REPRINT
HORIZ. LAID
PAPER

ISSUED
DIE CUT 90-

105 LI
\$60-



RP
107LA

107LI
15-



107LI
10-

? RP
OR ORIG.



110LIa
\$200-



112 LI
VALUES \$125
PRICED 85-
STAIN-OR
CANCELED
WITH RED?

1142
5-

114L3 12.50

1143
5-



GEN







119 L1
\$1.00

119 L2
\$1.85

119 L3
5

121 L 3
5

121 L 4
5

121 L 5
5



FASCIMILE
ON PIECE

131 L1
1.75



122 L1
5



132 L1
50-

FASSIMILE

132 L2
?

132 L2
75-



132 L1
?



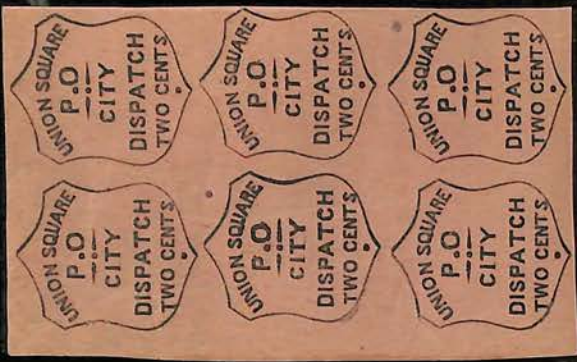
133 L1
?

GENUINE
PROOF OR
ESSAY —

133 L1
350-







144 L1
\$750
VSE.D
—



