

Carriers
Semi-official Issues
Baltimore
Md

FORGERIES



1LB1 \$ 2

1850-56



BLUE ON PINK SURFACE COLORED THRU
LAID PAPER / UNLISTED ORIG. OR FORGERY
Mostly resembles S. Allen Taylor FORGERY B



1LB6 \$ 7

1856

Paper colors ??

CARRIERS



1LBC \$9

1857

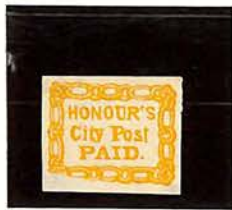


1LBC \$9

Reprints By Horsey

1857

CARRIERS



4LB13



5LB2

CARRIERS



6LB6

Green

*Philadelphia
USPO*



7LB12



ADAMS AND CO EXPRESS



Forgery A

111

Forgery A



112

Picture is
D.H. Haskell
Manager.

Postal Service started Sept 1849, operating on the
Pacific Coast + notes on pg 156 Stearns Column.

30mm

BARR'S PENNY DESPATCH

LANCASTER P.A.

GENUINE



8L
BLACK, Green
TYPE VI
\$250

20mm

8L

BERFORD & CO'S EXPRESS
NEW YORK



11 L1
FORGERY



11 L2
FORGERY

Forgery A



11 L3
FORGERY



11 L4
FORGERY

ORGANIZED BY RICHARD G. BERFORD AND LORING L. LOMBARD
CARRIED LETTERS, NEWSPAPERS AND PACKAGES BY STEAMER
TO PANAMA AND POINTS ON THE WEST COAST, NORTH & SOUTH
AMERICA, AGENCIES IN THE WEST INDIES & HAWAII.

33mm

BRADY & CO'S PENNY POST

Forgery A



23L1

+ Notes from Scott's
Locals Section.

25-27mm

BRAINARD AND CO



24 L 2

24 L 1

'Hussey'
Reprints
-thin paper-

All Ferguy



24 L 1

?
-thicker paper
Possibly original

Scotts pg 261

27m~

24L

BRIGGS DESPATCH
. PHILADELPHIA.



20mm on side?



25L3
Forggeries.

Ferguson
A

Sloane pp 103.

BRONSON & FORBES CITY EXPRESS POST

CHICAGO



27L1
Probably Taylor?

Black on Yellow + Green
February B



25mm

27L

BROWNE & CO'S CITY POST OFFICE

Figury A



29L1

Figury AA



29L2

Figury AA



29L2

1852-1855

Operated by John W.S. Browne.



Figury D



Figury DD

25mm

BROWNE'S EASTON DESPATCH POST

EASTON, PA.

Bogus 2



30L1

UNLISTED FORGERY WITH VERY THICK LINE

20mm or 24mm on side

Bogus 1



30L2

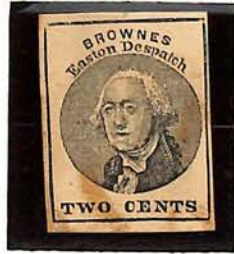
FORGERY BY SCOTT

22mm

30L

BROWNE'S EASTON DESPATCH POST

EASTON - PA

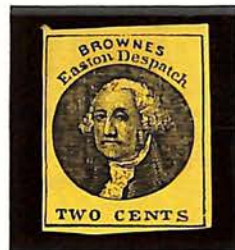


Forgery A

30L3
FORGERY BY SCOTT



Black



Black - Yellow

Forgery B



Yellow on White



Red

30L3
FORGERY BY TAYLOR

27mm

30L

CALIFORNIA PENNY POST Co

Ferguson B



34L1

1855
20mm

Ferguson B



Orange
Ferguson A

34L16

Not Ferguson A but u. Pol Para 27mm

pg 394

1855-59.

+ notes from Scotts. pp 262



Bazus 2

20-22mm

34L

CARNES CITY LETTER EXPRESS

SAN FRANCISCO



35L1
FORGERY 'A'

20m



35L3 FORGERY A
S. A. TAYLOR

THIN OVAL COMPLETE, BOTTOM LH
NUMERAL '5' IS UNRETOUCHED

22m

CARNES CITY LETTER EXPRESS



35L3 FORGERY A.
S.A. TAYLOR.
DIE NOW HAS BRK ON L/H SIDE, DOT
INSIDE BREAK, OVAL STILL OK.

35L

22

CARNES CITY LETTER EXPRESS



35L3 FORGERY 'A'
BREAK ON LEFT AND SINGLE BREAK
AT BOTTOM WITH DOT IN LH BREAK.
By S. A. TAYLOR.

[Handwritten signature]

CARNES CITY LETTER EXPRESS



Handwritten scribble

35L3 FORGERY A.
S.A TAYLOR.

OVAL BROKEN ON L/H SIDE BUT OTHERWISE COMPLETE. NO DOT IN BREAK OF OVAL.

CARNES CITY LETTER EXPRESS



35L3
FORGERY 'A'
BREAK AT BOTTOM OF CIRCLE.

22m

CARNES CITY LETTER EXPRESS



35L3
 FORGERY A
 2 BRKS NOW @ BOTTOM OF CIRCLE

22

G CARTER'S DESPATCH



Forgery B

36L1
check



36L1
Forgery 'c'



36L1
unknown
type

20mm
on side

G CARTER'S DESPATCH
Philadelphia, PA.



20 mm on side

36L
Forgery 'B'

Taylor
36L

CHEEVER & TOWLE



37L
Fogarty 'A'



Fogarty 'C'

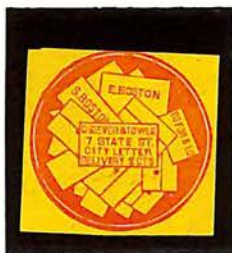
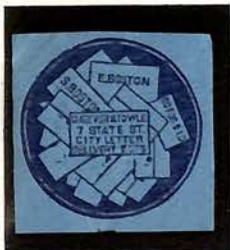
Fogarty 'E'

29m



37L
Fogarty 'E' 55m

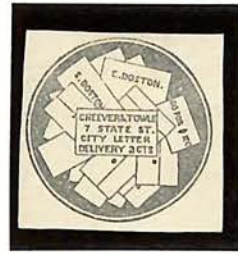
CHEEVER & TOWLE



28m

3761
Fargny
S.A. Taylor
37L

CHEEVER & TOWLE



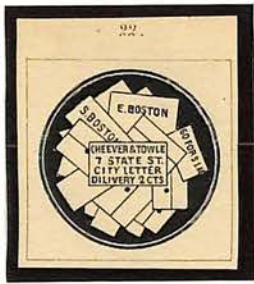
37L
Popinto

JH m

CHEEVER & TOWLE



37L1
Top or Pair?
Whichever?



LITHOGRAPH FROM
"POSTAGE STAMPS,
ILLUSTRATED."
J. B. MOENS,
LONDON, 1864
PLATE 30



37L1

MOENS

37L1
interior.

24m

28m

37L

CHICAGO PENNY POST

Chicago
die

D



E



38H1

Can't find any info



25mm

SAMUEL ALLEN TAYLOR



24

Society
Membership
Logo Seal

100

CITY LETTER EXPRESS MAIL

Rowark N.S.
Scott pg 264

A



45L
Type A
Sargoy

27mm

CLARKE'S CIRCULAR POST

436 BROADWAY
NEW YORK

30
mm



50L U I
FORGERY BY SCOTT

TYPOGRAPHED FORGERY, OF MUCH BETTER
APPEARANCE THAN ORIGINALS

CLARKE'S CIRCULAR POST WAS FOUNDED
BY MARION M CLARKE, ONLY TO CARRY
CIRCULARS. EVIDENCE SHOWS THE COMPANY
WAS IN EXISTENCE FOR A VERY SHORT
PERIOD OF TIME, PROBABLY FROM 1866
TO 1867. THE NEW YORK DIRECTORY LISTS
THIS COMPANY IN 1867 BUT NO RECORDS
EXIST AFTER THIS DATE

IT IS BELIEVED THAT LESS THAN A DOZEN
COPIES OF THE GENUINE STAMP NOW EXIST

Patten
Page 140

White paper
Buff ~~tone~~ paper

Black on
Thin White

Black on
Buff on

50L

DE MING'S PENNY POST

FRANKFORD Pa.



58L1

Established by Sidney Deming
 + notes from Post Paragraphs
 PP 411-12

20mm
 on side

321

61

EAGLE CITY POST
PHILADELPHIA



Forgery

61L2
FORGERY

24-25 m

61L

EAST RIVER POST OFFICE



62L3
Forgery B D



62L4
Forgery A
Taylor

B



62L4
Forgery C

C

62L4
Forgery D

D

E

62L4
Forgery F

F

EAST RIVER POST OFFICE



62L3
Unlisted



62L4
Unlisted

20m

40

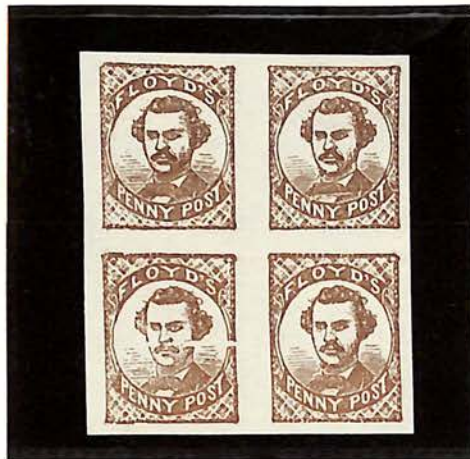
FLOYD'S PENNY POST

CHICAGO ILL

52

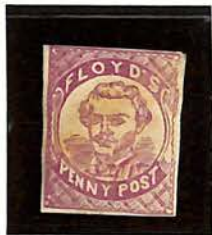


68L1
Hessay Reprint



68L2
Hessay Reprint

- 1860 -



52

68L
Probably forgeries
'dot paragraph pg 415'

Established by John R. Floyd Early in 1860
operated until June 20, Year
then sold to Charles W. Mapple

Above Blocks are
From Bottom L/H of
Sheet of 30 - See
But in Plate. Full sheet

116

FRAZER & CO CITY DESPATCH POST



25m

GRAFFLINS 1 CENT DESPATCH

Baltimore, Md.



73L1

Described as type x in
Pat Bibliography pg 420, 421
By
O.H. Perry

© Established 1856 By Joseph Graff

27m

HALE AND COMPANY



75L5
Looks like Taylors?

Scott pg 267.

30

JENKINS CAMDEN DISPATCH

Camden NJ



89W1
to be looked at ?

22
mm



93

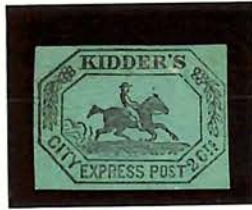
KIDDERS CITY EXPRESS POST

Brooklyn, N.Y.



Forger &
Taylor
93L1

20
m



62

page

268

93L

LETTER EXPRESS

9621



9621

27
mm

9622



9623

27
mm

+ Pat biographs under express
Scott locals Page 270

MESSENKOPES UNION SQUARE PO

Ny

Long
20mm



10641
Sagoy Jr

20
mm



10641
Sagoy Jr
S.A. Taylor

65
Patten
page
247

METROPOLITAN ERRAND & CARRIER EXPRESS

11 PINE ST
NEW YORK

SPACE FOR
FORGERY



107L1
FORGERY B



107L2
FORGERY B



107L3
FORGERY B



107L4
FORGERY 'B'

36

METROPOLITAN ERRAND & CARRIER EXPRESS C^o

11 PINE ST
NEW YORK



107L1
FORGERY C



107L2
FORGERY C



107L3
FORGERY C



107L4
FORGERY C



107L1
FORGERY C



NO RULES AROUND AND BETWEEN
STAMPS



36



GENUINE

107L

METROPOLITAN ERRAND & CARRIER EXPRESS CO

11 PINE ST
NEW YORK



107L1
REPRINT



107L2
REPRINT



107L3
REPRINT



107L4
REPRINT



107L1
REPRINT



107L2
REPRINT



107L3
REPRINT



107L4
REPRINT



362



107L

METROPOLITAN ERRAND & CARRIER EXPRESS CO



107LU1
REPRINT

4/2/10



107LU1
FORGERY 'B'

30ma

*Envelope
page 199*

METROPOLITAN POST OFFICE

New York

24/



10823
Forgery is
Taylor.

24/
um



10824
Forgery is
Taylor

Dutton
page 228-31

G.A. MILLS DISPATCH POST

New York City



10941

Forger's

Taylor.

25-27 m
on side

OVERTON AND CO



11341

Possibly Taylor's!

22mm

square