

PENNY EXPRESS Co



114h1  
Scott 19 272.

33  
~~~~~

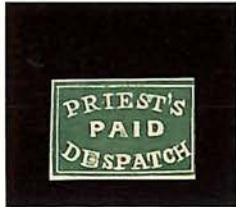
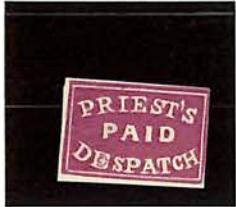


121

PRIESTS DESPATCH

Philadelphia

Pa.



12141

Forgery?

22m  
on 4/10

121L

PRINCE'S LETTER DISPATCH

Portland  
Maine



12241  
check looks  
original

22 mm



PRINCES LETTER DISPATCH

*Portland Maine*



Type 1  
122L1



Type 2.  
122L1

*22m*

122L

ROBISON AND Co

Brooklyn NY.



128L1  
Faragry E.  
Taylor.



Netter  
page 292  
Mary  
Zemples

20mm  
~~20.22~~  
mm

RUSSELL'S 8TH AVE POST OFFICE



130L1-5  
Forgery E  
Taylor



27  
m

130L

SQUIER & CO'S CITY LETTER DISPATCH



Red  
Green  
Both

132L1  
1956 APS Convention  
St Louis  
Platonic Exh' Economic

35  
W

132L

STATEN ISLAND EXPRESS



133L1  
Foragry 'e'  
Taylor

Ny - Patton # 294

Loose 20  
or 22mm on  
side

~~Patton~~  
page 297



SWART'S CITY DISPATCH POST

136L



136L  
Forgery A

Dull  
Ver nikon



136L  
Forgery B

27mm

136L

TEESE & Co's PENNY POST

Philadelphia  
PA.



137L1

Must be sorry as color is  
faded. original issued as  
blue on blueish paper.

2 w  
on side

137L

UNION SQUARE POST OFFICE  
New York.



141 L 1  
Forgery D  
Taylor

27m



141 L 2  
Forgery B  
Taylor

WELLS FARGO AND CO

28



143L2



143L6

20m 59

28



143L9

143L

WESTTOWN  
Westtown PA

Coan  
20mm  
outside



145L



145L  
Bogus.  
(Springer).

33  
mm on  
side

Notes Scott 276.

145L

WHITTELSEY'S EXPRESS

Chicago



1964-1  
Probably Taylor

27m

146L

CLINTON'S PENNY POST  
Philadelphia.



161 L1

Pat pg 408.

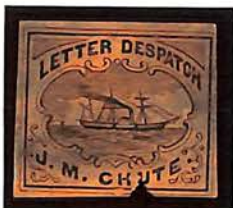
22 mm  
on side

JM CHUTE  
By S. ALLAN TAYLOR  
BOSTON



TYPE 1

TYPOGRAPHED - THE BOTTOM FRAMELINE IS COMPLETE, AND THE RIGHT - HAND MARGIN HAS THE SAIL OF A BOAT



TYPE 2

BASICALLY THE SAME AS TYPE 1 BUT THE BOTTOM FRAMELINE IS BROKEN AND THERE IS DAMAGE TO 'HU'IN CHUTE

THESE STAMPS WERE PRODUCED BY TAYLOR FOR CHUTE WHO WAS A CONTEMPORARY STAMP DEALER IN BOSTON. TAYLOR KEPT THE PLATES AND LATER ALTERED IT TO PRODUCE THE 'E.D. PRINCE' FANTASIES.

ZZM



J.M. CHUTE  
By S. ALLAN TAYLOR  
BOSTON



TYPE 3

SAME AS TYPE 2 BUT THE SHIPS SAIL IN  
THE LEFT HAND HORIZON IS REMOVED



TYPE 4

APPEAR TO BE LITHOGRAPHED COPIES OF  
TYPE 1 AND MAY HAVE BEEN PRINTED BY  
CHUTE HIMSELF. THE BACKGROUND IS FUZZY  
AND THERE IS EVIDENCE THAT THEY WERE  
PRINTED IN PANES

22m

E.D. PRINCE  
S. ALLAN TAYLOR  
BOSTON.



TYPE I FORM 1



TYPE I FORM 2

22m

E.D. PRINCE  
S. ALLAN TAYLOR  
BOSTON.



TYPE I FORM 13



TYPE I



PRINTED FROM  
UNIDENTIFIED FORMS.

ZZIM

E.D. PRINCE  
S. ALLAN TAYLOR  
BOSTON



UNWASTED TYPES



TYPE 2  
LATER VERSION VALUE FIGURES

22m

New York City Post.



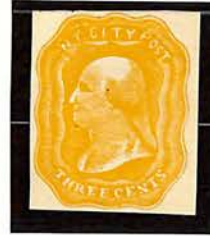
Parlousy Pictograph  
1835

Adapted from Our Early USA  
Postage Essay  
Springer Vol 10 PP 37

27-29  
mm

1877-1880

BAC.



Copy info  
from Spruiger's







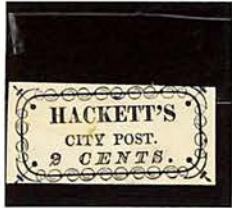
Shite



get it

1897





Winans City Post.



Type 1

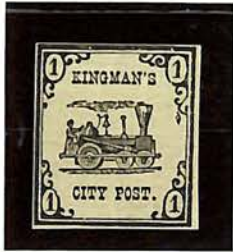


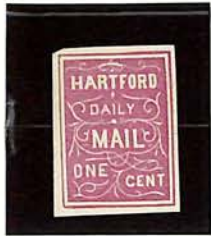
Type 1  
Subtype 'Close'

Winans City Post



All type 3  
Green Scotts Plabs





GARAGAN & HOWE  
CITY EXPRESS  
SAN FRANCISCO, CALIF.



Who Knows ?  
FORGERY B TYPE III  
(HARRY LYONS)





Complete fantasy.  
Based on Express Co Card.

Johnson's Box  
Philadelphia



Type 1



Malformed S.





Bogus Types



23. AVENUE



18. Avenue



"C"



"F"



NOT IN PATTERNS SHOWN





EXPRESS U.S. POST.  
Adaptation du dessin "Mail-Box" de Clark & Co. Deux types. Grande diversité de couleurs.



MOENS  
PRINTS



Bogus  
U.S. Express  
Post (Taylor)



SOEZ CANAL



S. ALLEN TAYLOR  
FANTASIES



TYPE I  
"R" WITH CURL



TYPE II  
"R" NO CURL



J. M. CHUTE  
S. Allen Taylor  
later altered  
E. D. Prince  
\$8-



E. D. PRINCE  
LETTER DESPATCH  
GREEN  
(greyish green)  
S. Allen Taylor  
\$8-



TYPE 2

TYPE I FORM C  
S. ALLEN TAYLOR

FLYNN'S Penny Post.  
FLYNN'S Penny Post.  
HALL & NEILL'S Free DESPATCH POST.  
HALL & NEILL'S Free DESPATCH POST.  
HALL & NEILL'S Free DESPATCH POST.  
HALL & NEILL'S Free DESPATCH POST.  
MOODY'S Penny Post, CHICAGO.  
MOODY'S Penny Post, CHICAGO.  
MOODY'S Penny Post, CHICAGO.

EXPRESS LABEL

BENTLEY'S DESPATCH, Madison Square.  
GLEN HAVEN Daily Mail, ONE CENT.  
St. James's City Post, Paid—2 cts.  
HALL & MILL'S FREE Despatch Post.  
LE BEAU PAID CITY POST.  
Jefferson Market, P.O. By C. Schmidt & Son.  
SPRINGSIDE POST OFFICE.  
BARNARD'S Cariboo Express. PAID.  
ARTHUR'S CITY POST, 2 CENTS.  
CITY POST, 2 CENTS.

NEW HAVEN AND N. Y. Exp. Post, 10 Cents.  
NEW HAVEN AND N. Y. Exp. Post, 10 Cents.  
NEW HAVEN AND N. Y. Exp. Post, 10 Cents.  
NEW HAVEN AND N. Y. Exp. Post, 10 Cents.  
Walton & Co. City Express POST, 2 Cents.  
CITY EXPRESS POST, 2 CENTS.  
CITY EXPRESS POST, 2 CENTS.

TO THE POST OFFICE Every 2 hours, FROM JOHNSON'S BOX, 7 N. 10th St. Phila.  
TO THE POST OFFICE Every 2 hours, FROM JOHNSON'S BOX, 7 N. 10th St. Phila.  
TO THE POST OFFICE Every 2 hours, FROM JOHNSON'S BOX, 7 N. 10th St. Phila.  
TO THE POST OFFICE Every 2 hours, FROM JOHNSON'S BOX, 7 N. 10th St. Phila.  
TO THE POST OFFICE Every 2 hours, FROM JOHNSON'S BOX, 7 N. 10th St. Phila.  
TO THE POST OFFICE Every 2 hours, FROM JOHNSON'S BOX, 7 N. 10th St. Phila.  
TO THE POST OFFICE Every 2 hours, FROM JOHNSON'S BOX, 7 N. 10th St. Phila.

WARWICK'S 2c. City Dispatch Post.  
Warwick's 2c. CITY Dispatch Post.  
WARWICK'S 2c. CITY Dispatch Post.  
WARWICK'S 2c. CITY Dispatch Post.  
WARWICK'S 6c. CITY Dispatch Post.  
WARWICK'S 6c. CITY Dispatch Post.  
WARWICK'S 2c. CITY Dispatch Post.  
WARWICK'S 2c. CITY Dispatch Post.  
WARWICK'S 2c. CITY Dispatch Post.  
WARWICK'S 2c. CITY Dispatch Post.

ROADMAN'S PENNY POST.  
ROADMAN'S PENNY POST.  
ROADMAN'S PENNY POST.  
ROADMAN'S PENNY POST.  
ROADMAN'S PENNY POST.  
ROADMAN'S PENNY POST.  
ROADMAN'S PENNY POST.  
ROADMAN'S PENNY POST.  
ROADMAN'S PENNY POST.  
AMERICAN EXPRESS COMPANY. Postage Two Cents. Paid

MOODY'S Penny Dispatch, CHICAGO.  
MOODY'S Penny Dispatch, CHICAGO.  
MOODY'S Penny Dispatch, CHICAGO.  
BROWNE'S Easton Despatch Post, Two Cents.  
BROWNE'S Easton Despatch Post, Two Cents.  
BROWNE'S Easton Despatch Post, Two Cents.  
BROWNE'S Easton Despatch Post, Two Cents.

JOHNSON CITY EXPRESS POST 2 CENTS

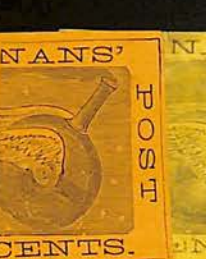
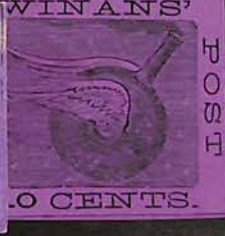
ALLEN'S CITY DISPATCH 125 CLARK ST.

WINANS' CITY POST, 2 CENTS.  
WINANS' CITY POST, 2 CENTS.  
WINANS' CITY POST, 2 CENTS.  
WEST-TOWN

WINANS' CITY POST, 2 CENTS.



WINAN'S  
CITY POST  
S. Allen Taylor  
Type 7  
BLACK



## C. & W. BRIDGE DESPATCH

The stamps of this Post have generally been considered to be completely bogus or fictitious. It is possible, however, and there is some evidence to support this, that Samuel Allan Taylor and other early fakers knew of Posts which did not issue stamps and filled this deficiency by creating stamps for collectors. It is also possible that, in a few cases, Taylor and his contemporaries imitated stamps which actually did exist but which, either through scarcity or for some other reason, have not survived to-day. It is therefore wise, in dealing with stamps or Posts generally classed as bogus or non-existent, to keep this reservation in mind.

In the case of C. & W. Bridge Despatch, Coster stated that these stamps were used to frank mail between the wharves of the villages of Colombia and Wrightsville in Pennsylvania on the Susquehanna River. Coster listed a Gold/Green and Gold/Vermilion label. No subsequent information has been brought to light which supports Coster's statements, and unless any evidence to the contrary is forthcoming these labels should be regarded as entirely bogus.

Five sub-types are known to the writer, each being a minor variation on the same pattern. It is not known which was the first on the scene and the listing given is not necessarily in chronological order nor complete.

**C. & W.  
BRIDGE  
DESPATCH.**

Type II  
From Taylor's "B period"

|                                             |      |
|---------------------------------------------|------|
| Black ( <i>violet gray</i> ) .....          | 1.00 |
| Black ( <i>gray violet</i> ) .....          | 1.00 |
| Black ( <i>pale violet</i> ) .....          | 1.00 |
| Brown ( <i>yellow</i> ) .....               | 1.25 |
| Black ( <i>bright green, S.C.</i> ) .....   | 1.50 |
| Black ( <i>blackish green, S.C.</i> ) ..... | 2.25 |
| Black ( <i>bright blue, S.C.</i> ) .....    | 1.75 |
| Black ( <i>red orange, S.C.</i> ) .....     | 1.25 |
| Black ( <i>pale purple, S.C.</i> ) .....    | 1.75 |



Type I

Printed from the same form as Arthur's City Post

|                                    |      |
|------------------------------------|------|
| Brownish red .....                 | .85  |
| Black ( <i>yellow</i> ) .....      | .85  |
| Black ( <i>green, S.C.</i> ) ..... | 1.10 |



### Type A (Illustration A)

Format horizontal rectangle. Frame consists of a thin inner line with a thicker outer parallel line. At the corners the frame lines overlap or pass across each other. Typographed in black.

Noted in the following colours and papers:

Black/Vermilion, glazed surface paper      Black/Yellow, paper coloured through  
Black/Green, paper coloured through



A



### TYPE B (Illustration B)

Very similar to Type A but "DESPATCH" is in smaller lettering. Typographed.

Noted in the following colours and papers:

Gold/Vermilion, surface coloured glazed paper  
Gold/Yellow, surface coloured glazed paper  
Gold/Green, paper coloured through



B





C

TYPE C (Illustration C)

Frame consists of single line. All inscriptions are larger, the word "BRIDGE" reaching right across from one side frame to the other. Typographed on slightly glazed surface coloured paper.

Gold/Green

Gold/Vermilion

**C. & W. BRIDGE DESPATCH**

Chas. H. Coster, in his 1879 listing of the local posts, said this company "had for its object the transportation of letters between Columbia and Wrightsville, Pa., over the bridge connecting the two places, which are situated on opposite banks of the Susquehanna River." It is possible such a post existed but no evidence is available to indicate that the labels ascribed to it are anything but bogus. Donald S. Patton lists five varieties. We illustrate below the two versions produced by S. Allan Taylor.



D

C. & W. BRIDGE DESPATCH.

Emission fantaisiste. Typos variés (7)

TYPE D (Illustration D)

Frame line consists of thinner and thicker outer lines, further apart than in Types A and B, and not overlapping at the corners. Typographed.

Noted in the following papers and colours:

Red/White, plain wove paper      Black/Green, glazed surface paper  
Black/Blue, green glazed surface paper



E

TYPE E (Illustration E)

Frame and inscription similar to Type D but smaller format. Typographed.

Noted in the following colours and papers:

(a) Glazed surface paper:      Black/Green      Black/Vermilion      Red/Lavender  
(b) Wove paper coloured through      Black/Lavender      Black/Grey-blue





Browne & Co.'s City Post, Cincinnati, Ohio.  
Operated by J. W. S. Brown.



BROWN'S CITY POST.  
Emission Taylor.



L84

L85





L81

*E. Taylor*



79 Locals  
4.00000

4.00000

BROADWAY P.O.  
Dessin fantaisiste. Noir.

B. Taylor



A. Hinney



E. Woods for Hinney



F. Hinney





### SAMUEL ALLAN TAYLOR AND HIS WORK

S. Allan Taylor (1839-1913), known as the "Master Gaffer," the "Prince of Forgers," and other soubriquets, was possibly the most colorful figure in the history of philately (certainly he was one of the most notorious). He was born in Ayrshire, Scotland, and migrated to New York in 1850. In his early twenties he moved to Montreal and it was there, apparently, that he began his philatelic career. In 1864, it was he who published the first stamp paper in North America, "The Stamp Collector's Record." That same year marked his elopement with a 15-year-old girl to Albany, N.Y., in which location he continued publication of the "Record." By the fall of 1865 the Taylors, now a family of 3, settled in Boston, Mass. Taylor once intimated that stamp collectors were fools and stamp dealers, knaves. If the fools were willing to pay money for bits of paper, Taylor saw no reason why he shouldn't supply them. He had already been introduced by John Appleton

Nutter in Montreal to the possibilities inherent in creating his own stamps, and he set out to apply his talents and imagination in this direction. During the next twenty years his name became a by-word of reprobation in nearly every stamp publication in America and Europe. No reliable estimate has been placed on the varieties that poured from his press, but they must run into the thousands. And they were, in his own words, "just as good as" the originals (when there were originals, since many of his creations were out-and-out fantasies). In 1864 he was pricing his bogus local posts at 5c each. As the years passed this price was dropped to 2c, and later to 1c. By May of 1869 he was offering a packet of 250 different for \$2.00. In today's market such a packet of Taylor creations would bring 100 times that figure. Taylor was too modest. Time has proved that as least some of his works are even "better" than the originals!

#### PARTIAL RECONSTRUCTION OF ONE OF TAYLOR'S COMPOSITE FORMS







S. ALLEN TAYLOR  
FANTASIES



UNIDENTIFIED  
FORM



PATTON TYPE 2  
NO PERIOD AFTER  
POST  
S. ALLEN TAYLOR



TYPE B  
S. ALLEN TAYLOR





Essex Letter Express, New York City, N. Y.

Established in 1856 by three or four ex-carriers who sold a good supply of their stamps to the public, then disappeared.



"D"



"F"

ESSEX LETTER EXPRESS FORGERY E

E. Taylor



### LOCAL POSTS OF NEW YORK

TYPE III. Break in upper frame and short top horizontal stroke of first "E" as in TYPE I. A short black line connects the top curve of the "S" of "SX" to the lowest part of the waves. The right limb of the "X" is prolonged upwards to join the lowest wave.

TYPE IV. Damage to top frame very similar to TYPES I and III. There is a curved flaw between "X" of "ESSEX" and "L" of "LETTER". There is a slight outward bulge in the left side frame opposite the curved flaw already mentioned. This is a fairly common forgery, only noted in the colours of the issued stamp. Not all examples met with show the types described for the strips of four and it is probable that there was more than one printing.

2c. Black on red glazed surface coloured paper.

