

# United States of America

## Locals

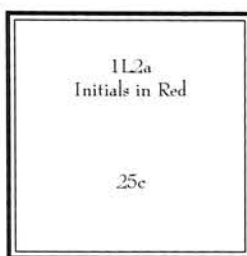
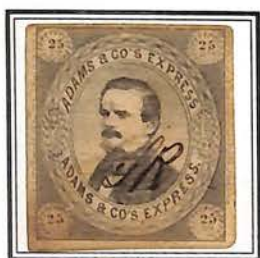
Adams & Co.'s Express, California  
1854



11.1  
Black on Blue



11.2  
Black  
Black Initials



11.2a  
Initials in Red

25c

11.2a  
Initials in Red



11.2b  
w/o Initials

## Glazed Surface - Cardboard



11.3  
Black on Pink

Ovpt'd. in Red  
"Over our California lines only"



11.4  
Black

143 ADAMS (Black) CUP  
Signed BARTOLS # 2 175  
ILPS



Adams' City Express Post  
New York, New York  
1850-1852

One Cent Type B

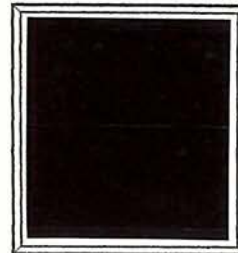
Forgery A  
Thin Wove Paper



1 Cent  
Black

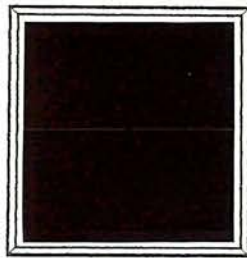


1 Cent  
Grey Black

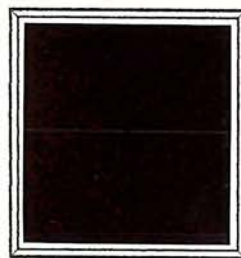


1 Cent  
Dull Blue

Vertically Laid Paper

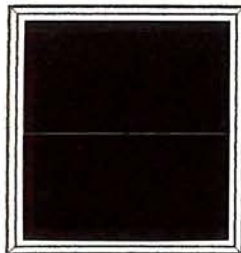


1 Cent  
Black



1 Cent  
Dull Blue

Forgery B  
Wove Paper



1 Cent  
Blue



Adams' City Express Post  
New York, New York  
1850-1852

One Cent Type B

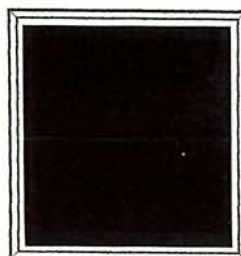
Forgery C, By Taylor



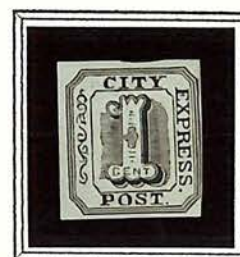
1 Cent  
Black on  
White



1 Cent  
Black on  
Salmon



1 Cent  
Black on  
Yellow

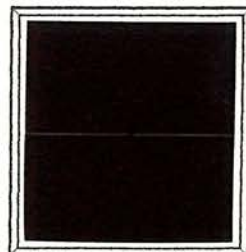


1 Cent  
Black on  
Pale Blue



1 Cent  
Black on  
Deep Red Orange  
Surface Coloured Paper

Laid Paper



1 Cent  
Black on  
Greenish



1 Cent  
Black on  
Pale Pink

# United States of America

## Locals

Adams' City Express Post  
New York, N.Y.

1850 - 1851



FORGERY



2L2  
Black on Buff



2L3  
Black on Gray

RARE  
IF  
PELURE



2L4  
Black on Gray



FAKE



ORIG.  
NOT PELURE  
PAINTED

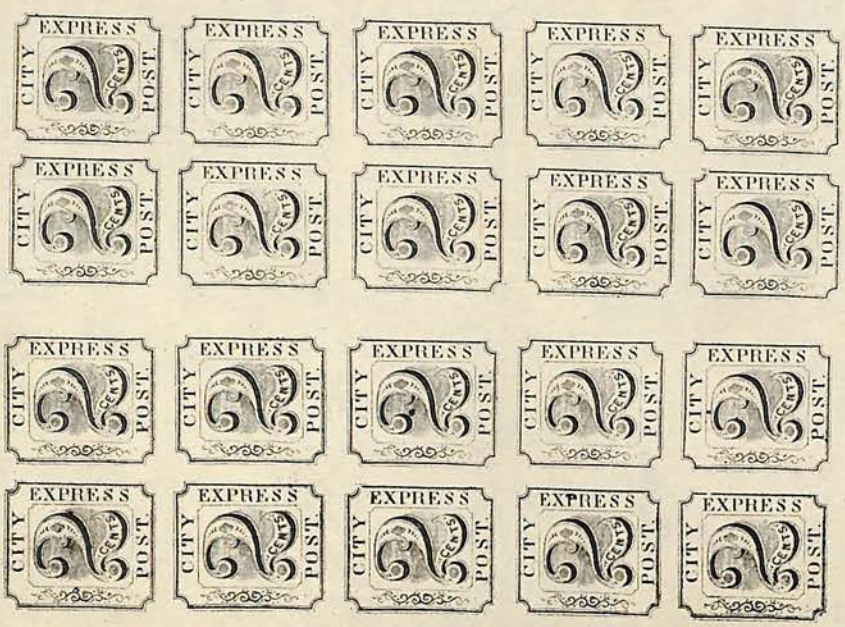
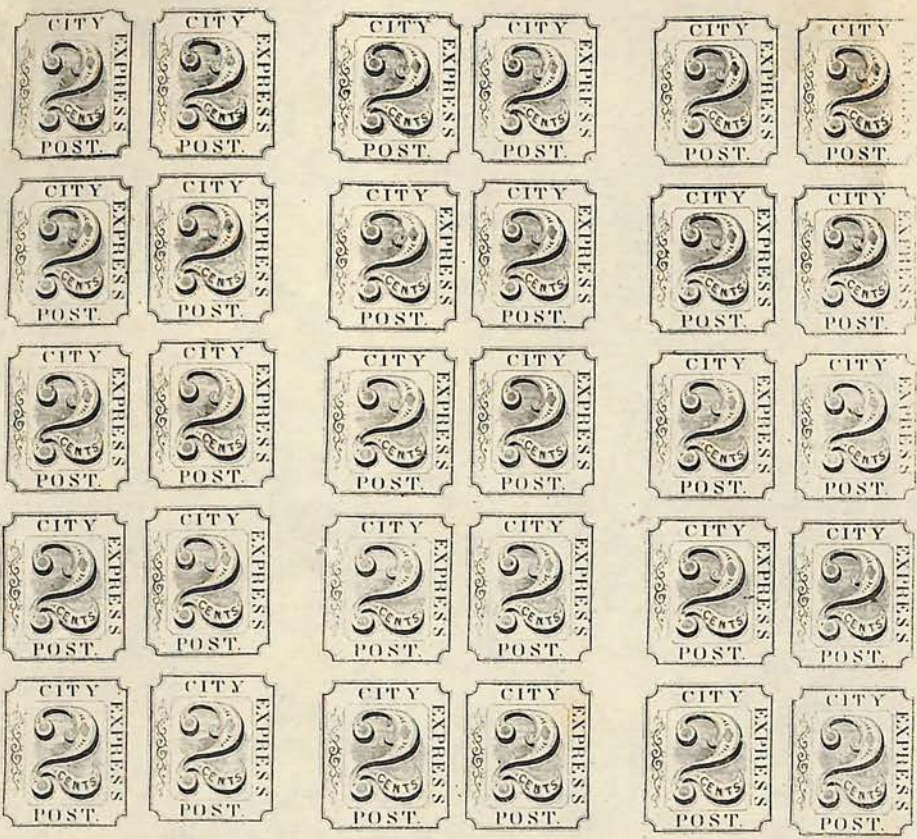


FORGERY

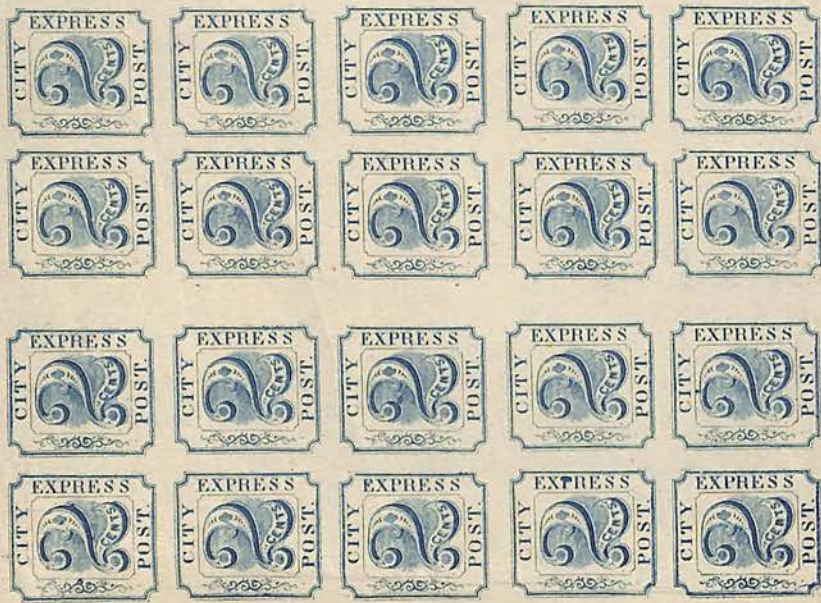


FAKE



















REPRINT  
FROM ORIG. PLATE  
TYPE 6  
DAN \$25

RE PRINT





Allen's City Dispatch  
Chicago Illinois  
1882

Cost of postage determined quarterly on  
a volume basis



Pink



Black



Red on yellow

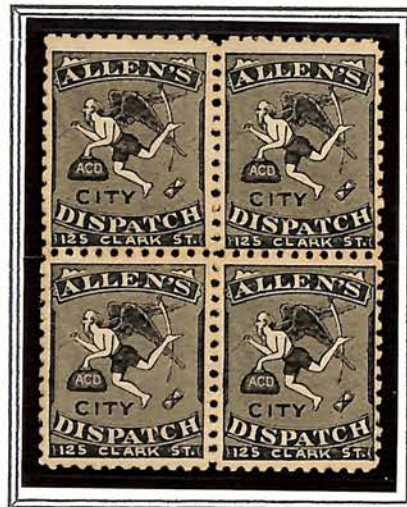


Purple

Perforation 10



3L3 20-



Black  
Block of Four

# United States of America

## Locals

Allen's City Dispatch  
Chicago, Ill.  
1882



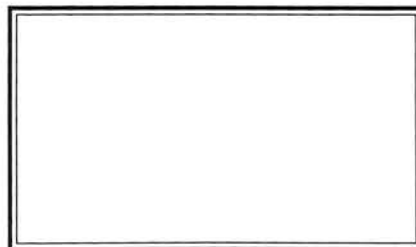
3L1  
Pink



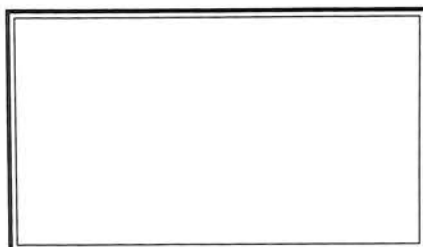
3L2  
Black

3L3  
Red on Yellow

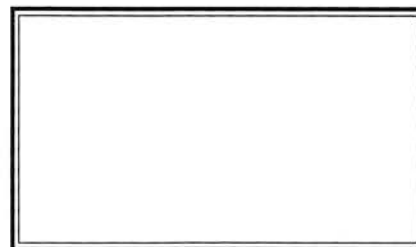
3L4  
Purple



3L2a  
Horizontal Pair - Imperf. Between



3L3a  
Imperf. Pair



3L3b  
Horizontal Pair - Imperf. Between







Uncle Sam's Rival Crushed.

Allen's City Dispatch, the private post-office, which has been in operation in this city for several months, was effectually broken up by the raid of Post-Office Inspectors Stuart and King upon the establishment yesterday, and the arrest of the proprietor, Edward Allen. Allen has been unable to give bail and is now in confinement.

343      No 6413

2/6/83





# United States of America

Locals

American Express Co.  
New York, N.Y.  
1856



4L1  
Black on Green

FAKE

Price \_\_\_\_\_



American Letter Mail Company  
1844  
New York, Philadelphia and Boston



5C Black  
Thick Paper



5C Black  
Thin Paper

Established by Lysander Spooner.  
Operated to and from New York, Philadelphia and Boston.



American Letter Mail Company  
1844  
New York, Philadelphia and Boston

Color Reprints



5 Cent  
Blue



5 Cent  
Yellow



5 Cent  
Magenta



5 Cent  
Green



5 Cent  
Brown

American Letter Mail Company  
1844  
New York, Philadelphia and Boston

Color Reprints Marked Proof on Back  
Corner Copies



5 Cent  
Blue



5 Cent  
Yellow



5 Cent  
Red



5 Cent  
Purple



5 Cent  
Green



5 Cent  
Brown



# United States of America

Locals

American Letter Mail Co.

1844



← FAULT

5L1 Thick Paper  
Black



5250



5L2  
Black on Gray  
with cert. #250



UNUSED/NG  
5/150



5L3 FAKE  
Blue on Gray

17,102



17,101

250-







561 NOT TIED CAT #450-

This stamp was found in the upper garret  
among father's papers. The letter was on a  
large piece of paper folded in such a way as  
to make this the front of the envelope.  
E.R.











5 L1 \$15  
1ST PRINTING  
THICK  
PAPER



THIN PAPER  
22.50

5 L1 7.50





# United States of America

Locals

Barr's Penny Dispatch

Lancaster, Pa.

1855



SL1 ✓  
Red



✓ SL2 ORIG TYPE 1  
Black on Green

Bayonne City Dispatch

Bayonne City, N.J.

1883



9L1  
Black

# United States of America

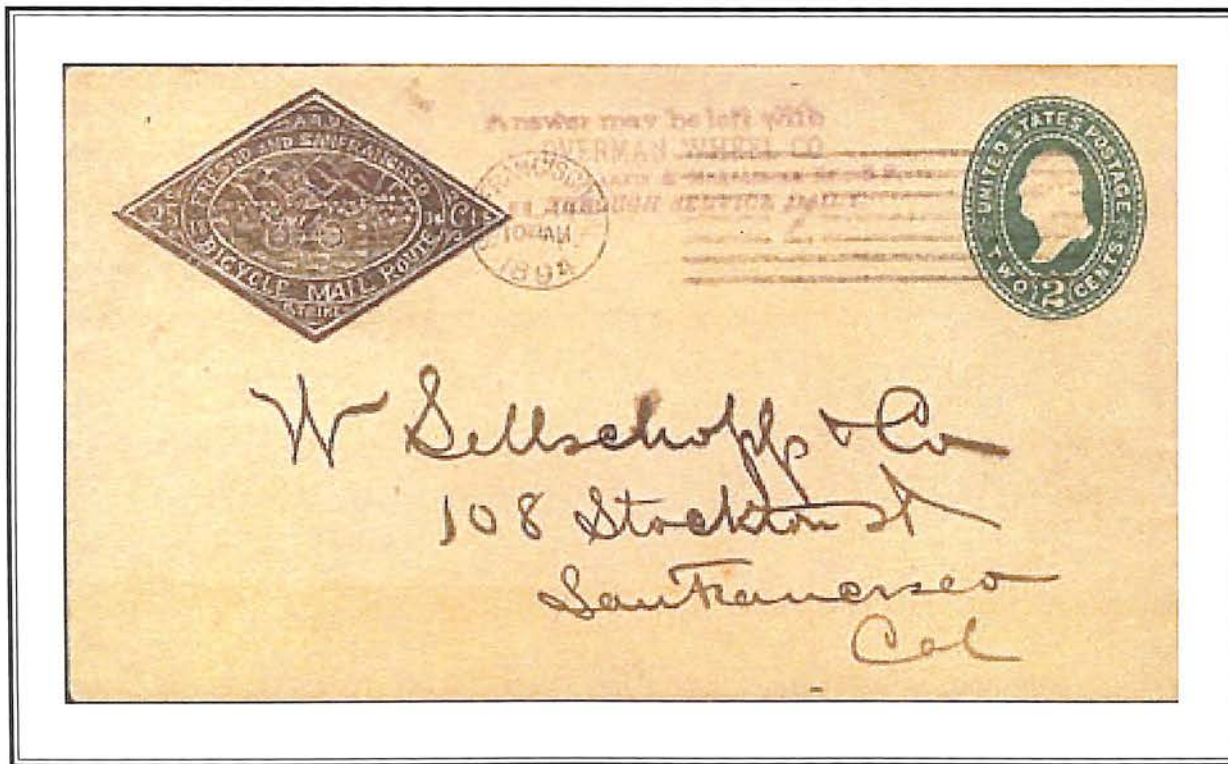
Locals  
Bicycle Mail Route  
San Francisco, California  
1894



12L1  
Green  
Spelling Error - San Francisco



12L2  
Green  
Spelling Error Corrected - San Francisco



12LU1 25c Brown on 2c U311





# United States of America

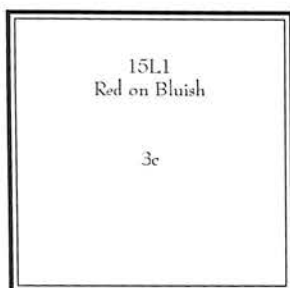
Locals

D.O. Blood & Co.

Philadelphia, Pa.

1843

I - Philadelphia Despatch Post

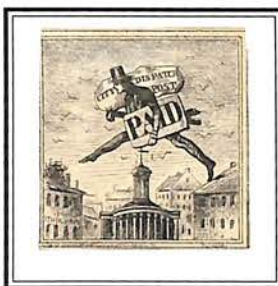


15L1  
Red on Bluish



15L2  
Black

Without Shading in Background  
Initialed "R & Co"



15L3  
Black on Grayish



*Charles M. Allen  
Ch...field  
ine*



# American Philatelic Society

## Expert Committee Report

Members of the American Philatelic Expertizing Service have examined the item submitted and it is their opinion that it is:

**United States, Scott No. 15L9, used on 1848 folded letter sheet, not tied, genuine in all respects.**



*Joseph Tinton  
Enterprise P.O.  
Sancaster Co  
Pa*

No. **174094**

Date: **2/14/2007**

### The American Philatelic Expertizing Service

*A Service to Philately Since 1903*

100 Match Factory Place, Bellefonte, PA 16823 USA

Phone: 814-933-3803 • Fax: 814-933-6128

Website: [www.stamps.org](http://www.stamps.org)



A cooperative service offered by the American Philatelic Society (APS) and the American Stamp Dealers Association (ASDA).



Certificate # 17,103

12 March 2021

# William T. Crowe

POB 2090, Danbury, CT 06813-2090

[wtcrowe@aol.com](mailto:wtcrowe@aol.com)

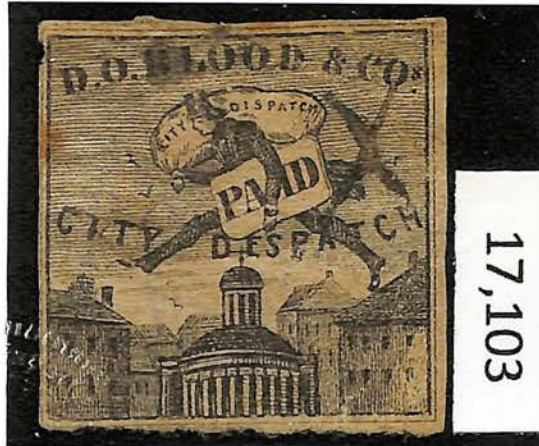
I have examined the item illustrated below, submitted to me for an opinion and

I am of the opinion that:

submitted as:

| <u>Scott Number</u>             | <u>Denomination</u> | <u>Year</u> | <u>Color</u> |
|---------------------------------|---------------------|-------------|--------------|
| 15L6                            | (2¢)                | 1847        | Black        |
| D. O. Blood & Co., Philadelphia |                     |             |              |

\*\*\*It is Genuine, Used, with a black manuscript "X" cancellation. The stamp with multiple faults. \*\*\*\*\*  
 \*\*\*\*\*



*W. T. Crowe*

Expertizer

# United States of America

## Locals

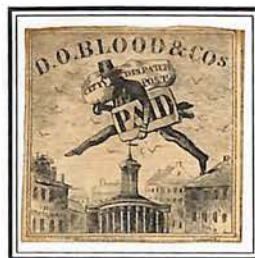
II - D.O. Blood & Co.  
 Initialed Dob & Cos. or D.O.B. & Co.  
 Shading in Background



DAVIDSON & CORNER  
 5/2 SHADING IN BACKGROUND



15L4  
 Black on Grayish  
 0-6 SHADING IN BACKGROUND



CV- 15L5 00 EV  
 Black 200 EV

1846



15L6  
 Black \$200

17,103  
 CENT.

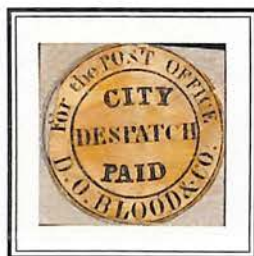
1846 - 1847



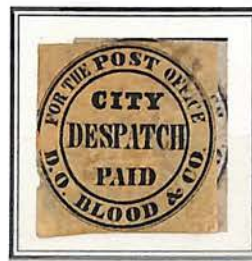
15L7  
 Black

1c

15L7  
 Black



15L8  
 Black



15L9  
 Black 100-





# United States of America

Locals

II - D.O. Blood & Co.

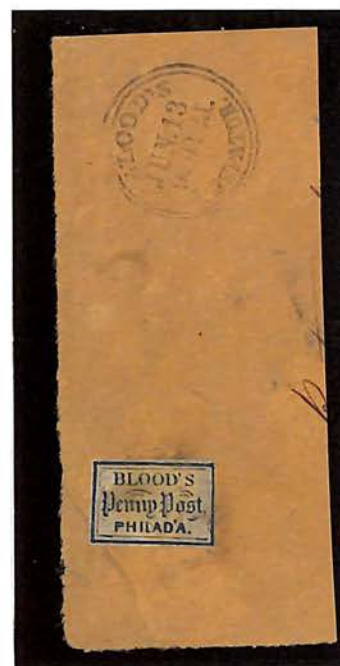
1848



15L10  
Black / Blue



15L11  
Black on Pale Green



1848 - 1854



15L12  
Gold on Black



15L13 BRIG-  
Bronze on Black 25  
le



1854

Bronze on Lilac



1853

Blue on Bluish



1854

Bronze on Black



15L17  
Bronze on Black  
le



## III. Blood's Penny Post 1855



50 50



15L18  
Black



10 NOV 27 28



1517







15L18  
\$35 (M) \$10 (C)  
MOBNS \$50-



Bought from  
John Nunes  
lot originally  
came from  
Eric Jackson  
paid \$575

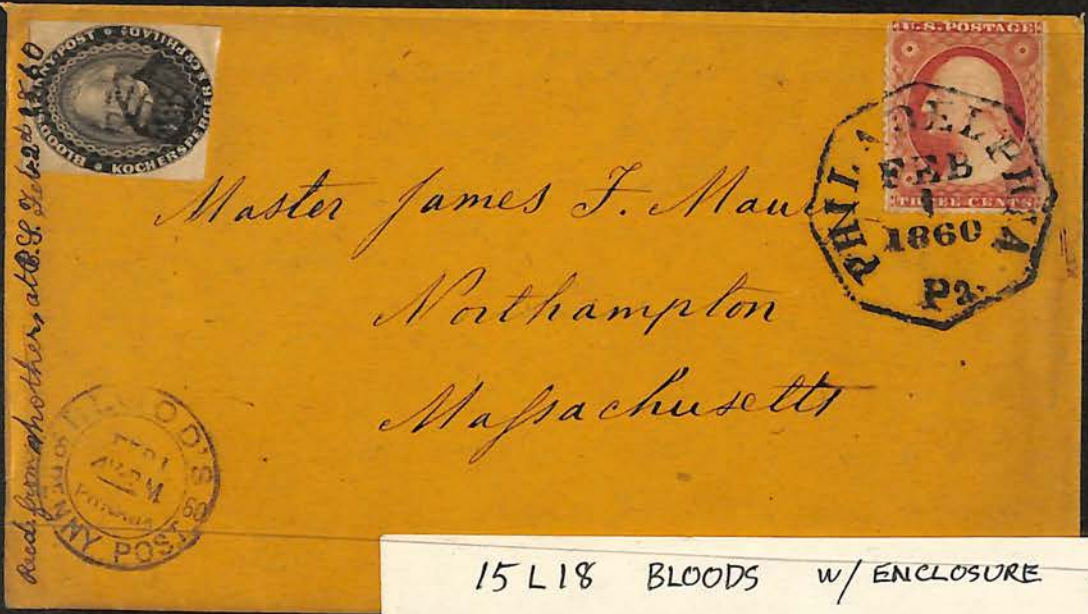
ENGRAVED  
ERRORED COLOR  
OR TRIAL COLOR  
ESSAY OR  
PROOF  
COULD BE RARE











15 L 18 BLOODS w/ ENCLOSURE \$150+





Type II  
Foseygd  
scutt  
on White



Type II  
Foseygd  
scutt  
on Buff



15LVA



15LV8



Type III  
Foseygd  
Red on  
Buff



BLOOD'S  
DISPATCH  
AND  
COAL  
OFFICE









MANU  
TOBACCO, SN  
PHILADELPHIA



*Mrs*



*Rec. G. Kuthrauff  
Anderville  
Perry County  
Pa.*

*Ruschenberger*

*5 Cts. Due*



*Dr. M. S. W. Ruschenberger U.S.N.  
U.S.S. Independence  
New York*

Lot 724 Sale 3001 Item 288361

Blood & Co., 1850; (1¢) bronze on black (Scott 15L13), local and 3¢(11A) tied by Philadelphia cds, on cover addressed to USS Independence in New York, with "5 Cts Due" straight line, wonderful cover, Very Fine. Scott ~~500~~  
Price \$325.

*CV 1,000*

*\$1,000*



*\$50-*

*L-40*

*at \$175. Also see Blood's Penny Post*



Miss Bucher  
Washington  
Sept 20/50

BLOD'S  
SEP 20  
10 1/2 A.M.  
PHILA.  
DESPATC



George De B. Heim Esq  
Dottsville  
Pennsylvania

Robinson  
Phila

BLOD'S  
Penn Post  
PHILADA.



Rev. James P. Weston,  
Stevens' Place  
(near Fort Mifflin)  
Main

SEP 13  
10 1/2 A.M.  
PHILA.  
DESPATC



1543  
1825



1543  
\$175

Mrs Caroline N Hazard  
Care of Wm H Perkins  
Bristol Penn

1543  
3.50





FOR ME GET  
DEAR NOT  
LOVE





15 L 15  
22-50



Type III  
Forgery D  
only  
Bronze on Black



Type IV  
Forgery A



Type III  
Forgery B  
Black on  
Green Silver  
Tus here



15213 25-

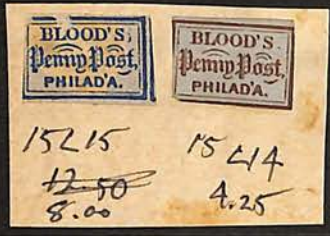
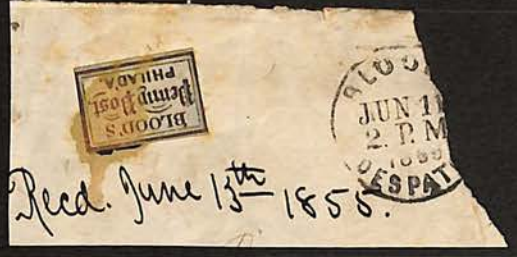


Type III  
Orig near  
Blue & Pink  
Scott 20  
15215

Original  
Type II

Type III  
Forgery A

15214 2.50  
15214a —  
laid paper  
Bronze/lilac



Type II  
Forgery D  
Tan/Yel



# United States of America

Locals  
D.O. Blood & Co.  
Envelopes  
1850 - 1860

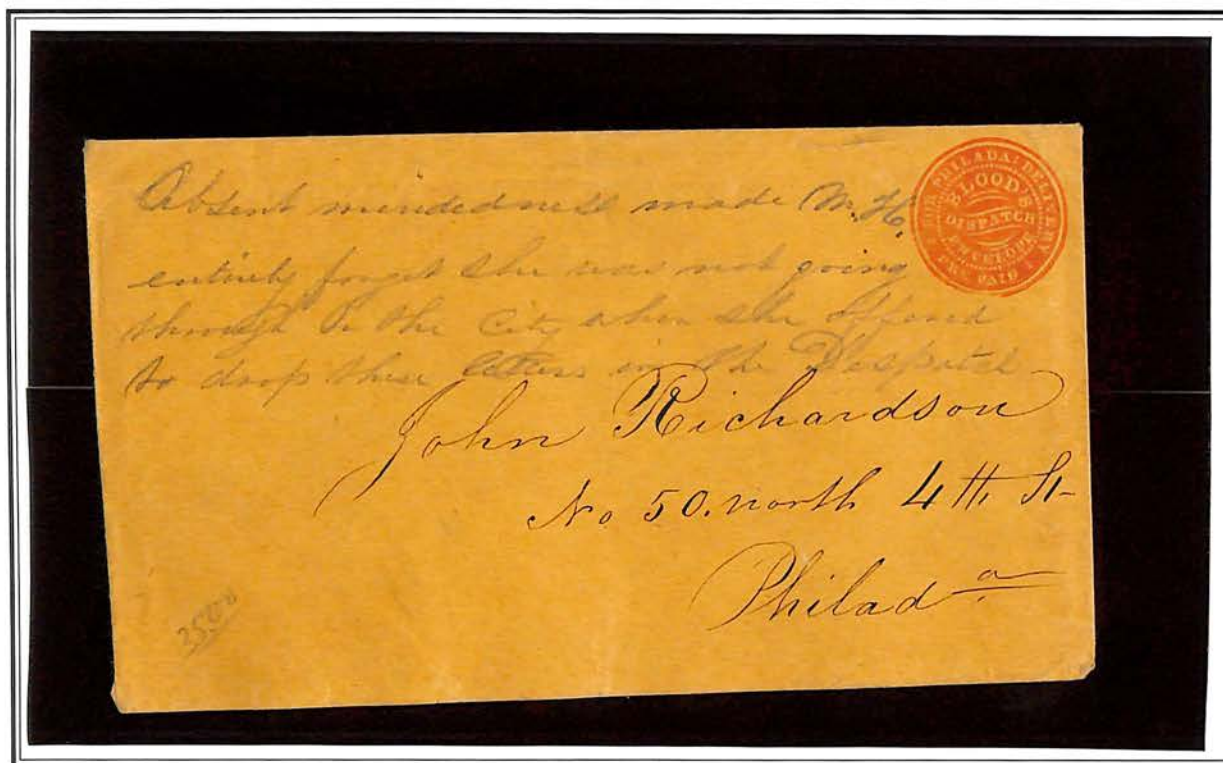


15LU6 - Red on Amber



# United States of America

Locals  
D.O. Blood & Co.  
Envelopes  
1850 - 1860



15LU6A - Red on Buff

# United States of America

Locals

Bouton's Post  
New York, N.Y.

I - Franklin City Despatch Post

1847

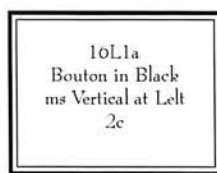
Surface Glazed Paper



*FAKE*



16L1  
Black on Green



16L1a  
Bouton in Black  
ms Vertical at Left  
2c

16L1a  
Bouton in Black  
ms Vertical at Left

## II - Bouton's Manhattan Express



17L1 *FAKE*  
Black on Pink

## III - Bouton's City Dispatch Post 1848



18L1  
Black



18L2 *c 250-*  
Black on Gray  
Blue  
*Peril G.P. 100*

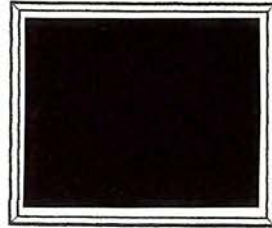


*ENCHAVING  
SAME AS ORIGINAL  
PAPER COLOR WASHES*



Bouton's Manhattan Express  
 1847-1849  
 New York, New York

Forgery A  
 Scott's Forgery



2 Cents  
 Black on  
 Rose coloured Paper

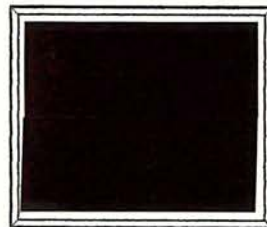
Forgery B  
 Taylor's Forgery  
 Paper Coloured Through



2 Cents  
 Black on  
 Dull Pink



2 Cents  
 Black on  
 Violet



2 Cents  
 Black on  
 Green



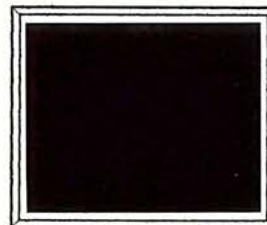
2 Cents  
 Black on  
 Blue



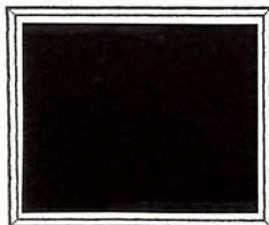
2 Cents  
 Black on  
 Grey



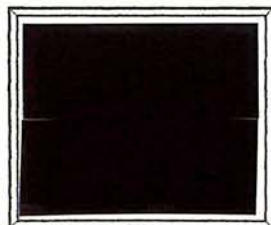
2 Cents  
 Black on  
 Yellow



2 Cents  
 Black on  
 Orange



2 Cents  
 Black on  
 Pale Buff



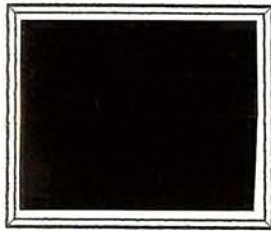
2 Cents  
 Black on  
 Pink



2 Cents  
 Black on  
 Lemon

Bouton's Manhattan Express  
1847-1849  
New York, New York

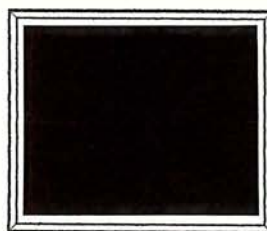
Forgery B  
Taylor's Forgery  
Surface Coloured Paper



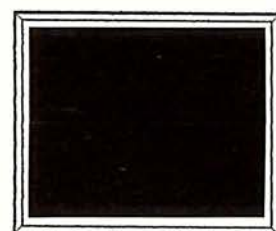
2 Cents  
Black on  
Pink



2 Cents  
Black on  
Bright Green



2 Cents  
Black on  
Dark Dull Green

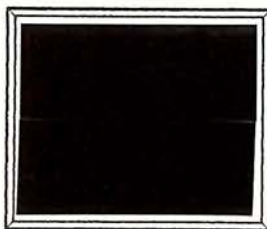


2 Cents  
Black on  
Vermilion

White Paper



2 Cents  
Red



2 Cents  
Black

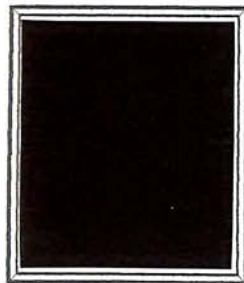


Bouton's City Dispatch Post  
 1848-1849  
 New York, New York

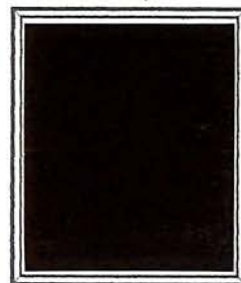
Reprint-Counterfeit I  
 Attributed to Hussey



2 Cents  
 Black  
 Transfer I



2 Cents  
 Black  
 Transfer II



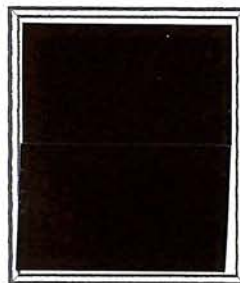
2 Cents  
 Black  
 Transfer III



2 Cents  
 Black  
 Transfer IV



2 Cents  
 Black  
 Transfer V



2 Cents  
 Black  
 Transfer VI

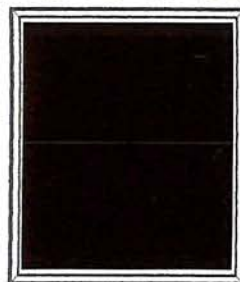


2 Cents  
 Black  
 Transfer VII

Reprint-Counterfeit II  
 Attributed to Hussey



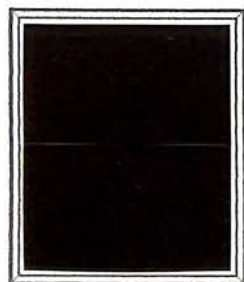
2 Cents  
 Deep Black



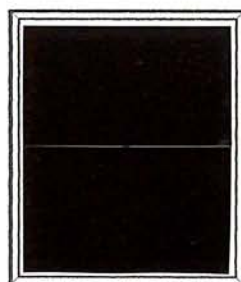
2 Cents  
 Pale Grey Green



2 Cents  
 Dull Blue



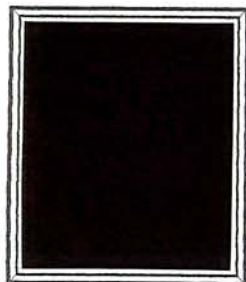
2 Cents  
 Brownish Lilac



2 Cents  
 Red

Bouton's City Dispatch Post  
1848-1849  
New York, New York

Scott's Forgery

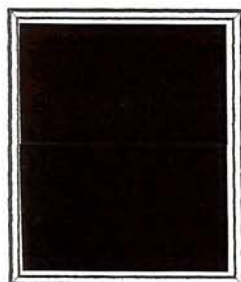


2 Cents  
Black on Greyish  
White Wove Paper



2 Cents  
Black on Green  
Glazed Paper

Forgeries of Two Cent Black/Blue Grey  
Forgery A, Wove Paper

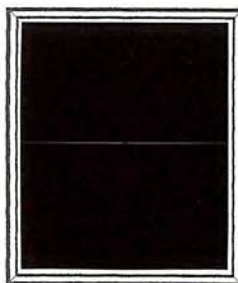


2 Cents  
Black on  
Thin White



2 Cents  
Red on  
Thicker White

Forgery B



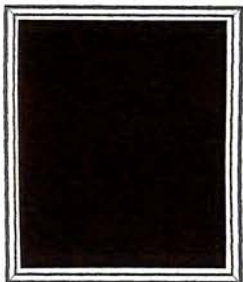
2 Cents  
Greyish Black on  
Yellowish White Paper



Bouton's City Dispatch Post  
1848-1849  
New York, New York

Forgeries of Two Cent Black/Blue Grey

Forgery C



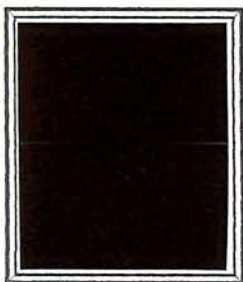
2 Cents  
Grey-Black on  
White Wove Paper

Forgery D, Scott's Forgery



2 Cents  
Black on  
Yellowish White Paper

Forgery E

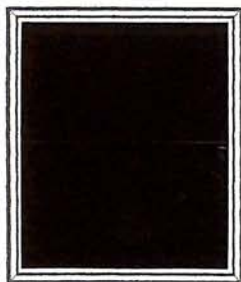


2 Cents  
Black on  
White Paper



2 Cents  
Black on  
Pale Grey Blue Paper

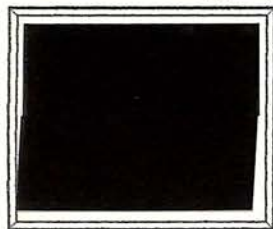
Forgery F



2 Cents  
Black on  
White Wove Paper

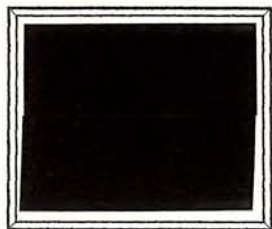
Boyce's City Express Post  
1852  
New York, New York

Forgery A  
Scott's Forgery



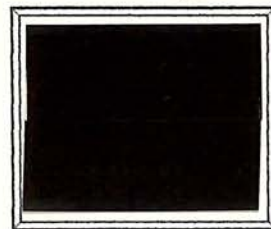
(2) Cents  
Black on  
Green Glazed Paper

Forgery B  
Moens Type



(2) Cents  
Black on  
Green Glazed Paper

Forgery C  
Solid Background



(2) Cents  
Black on  
Green Glazed Paper

Forgery D  
Taylor's Forgery  
Surfaced Glazed Paper



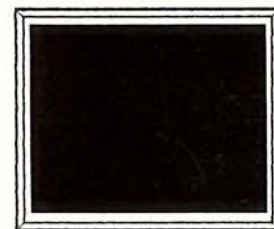
(2) Cents  
Black on  
Green



(2) Cents  
Black on  
Orange



(2) Cents  
Black on  
Pale Red



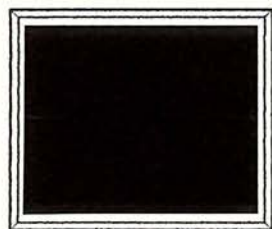
(2) Cents  
Black on  
Vermilion



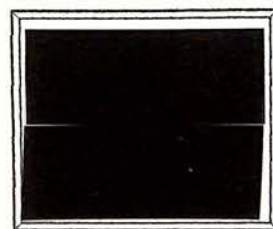
(2) Cents  
Black on  
Blue



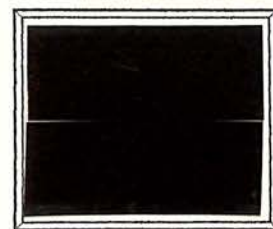
(2) Cents  
Black on  
Pink



(2) Cents  
Black on  
Pale Blue



(2) Cents  
Black on  
Deep Yellow



(2) Cents  
Black on  
Yellow