

*14*  
*Plate cracked*  
*Plate mostly*



*John Bianchi Esq*  
*310 Broadway*

2014

2014  
Not Tied  
75-

*Paid*



*Rev. Amos D. Smith*  
*No. 120 Second St*  
*New York*

MAY 3 1848  
2014

2014  
TIED COVER  
250-

# United States of America

Locals  
 Boyd's City Express  
 New York, N.Y.  
 1844



20L1  
 Black on Green



Plain Background - Map on Globe  
 1844



20L2  
 Black on  
 Yellow Green



Plain Background - Only Globe Shaded  
 1845



20L3  
 Black on  
 Bluish Green

Inner Oval Frame of Two Thin Lines -  
 Netted Background

1845



✓



20L4  
 Black on Green



✓

1847



20L5  
 Gold on Cream



# United States of America

Locals

Boyd's City Express

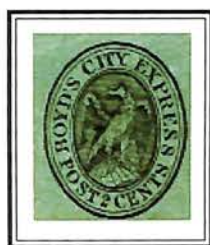
New York, N.Y.

1848

No Period After "Cents" - Inner Oval Frame Has Heavy Inner Lines



✓



20L7  
Black on Green  
Glazed



20L7a  
Black on  
Yellow Green

1852

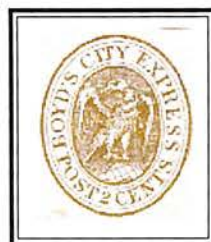
Period After "Cents" - Inner Oval Frame Has Heavy Inner Line



✓



20L8 ✓  
Black on Green



20L9  
Gold



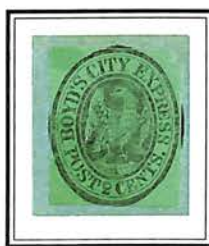
✓



SpK2 ✓

1854

Period After Cents - Inner Oval Frame Has Heavy Outer Line  
Eagle's Tail Pointed - Upper Part of "2" Open, w/ Heavy  
Downstroke at Left Shorter Than One at Right .



20L10 ✓  
Black on Green



The  
American Philatelic  
Expertizing Service



P.O. BOX 8000  
STATE COLLEGE, PA. 16803

CERTIFICATE: 119877



Members of The American Philatelic Expertizing Service have examined the item submitted and it is their opinion that it is

United States, Scott No. 20L14,  
cut to shape and tied to 1858 cover  
with "PAID/J.T.B." postmark,  
genuine in all respects. - -

*Robert E. Harb*

(APS Authorized Signature)

Date JUN 10 1999

*J. L. Lawrence*

(ASDA Authorized Signature)

*A. Mucin Bostk*

(Administrator Signature)





# United States of America

## Locals

Boyd's City Express  
New York, N.Y.

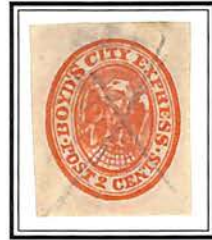
Outer Oval Frame of Three Lines - Solid Background

1856



20L11 *TY8 65*  
Black on  
Olive Green *6R15*

1857



20L12 *TY10*  
Brick Red  
on White *6R14*

1857



20L13 *50*  
Dull Orange  
on White



*CENTS INSTEAD OF CENT*

## Glazed Surface Paper

1857



20L14  
Black on Green



1860



20L15 *FAKE*  
Black on Green



20L16a *45*  
Verticle Tete-Beche Pair



*1 CENT*  
20L15a  
*1 CENTS*

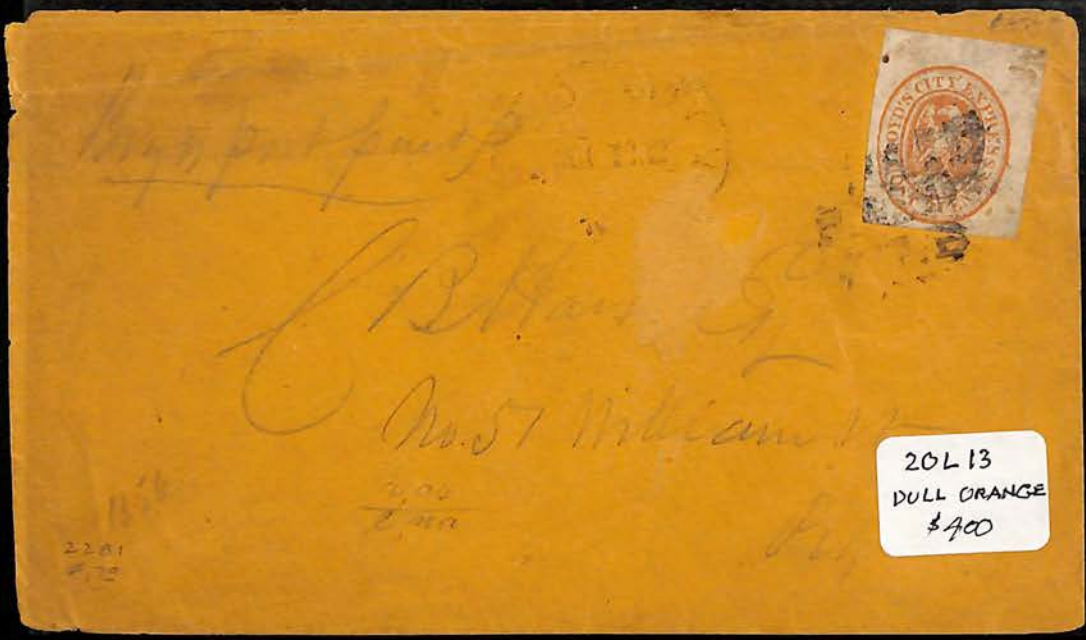


*20L15 EV \$50*  
*20L15a*



OUTER OVAL FRAME OF  
THREE LINES  
SOLID BACKGROUND

20L12  
NOT TIED  
BV \$900  
thead value 500



20L13  
DULL ORANGE  
\$900





ROYD'S CITY  
JUL 19  
BUSINESS POST



Miss Julie A. Vanderpool  
157 East 15th St  
New York

20L14

20L14

100-



John R. Brodhead Esq  
8 West 21st St

20L16

20L16  
tied on cover  
+ PAID cancel  
\$2.50

C-16

Boyd's City Express  
New York, New York  
1857 Issue on Cover



Scott Catalogue Number 20L14  
2 Cent Black on  
Green Glazed Surface Coloured Paper  
Eagle on Globe

125





Samuel Burtwell Poir

Williamstag insurance Co

72 Wall

2044  
\$75-  
PAID  
J.T.B  
IN RED  
COULD BE  
SCARCE



APR 7 18

Miss J Owens

34 Roosevelt St

N Y

2041  
PAID  
J.T.B  
\$100-



M.L.C.

From my  
Dear Mother

Master, Alfred Lord

and  
Cousin

of the  
Hamden  
Ct. School.  
July 11/8

2043  
DULL  
ORANGE  
\$150-






  
 Miss B. Henry  
 at Mrs. Appleton's  
 29 Beacon St  
 Boston.

2011


 Mispaid 5
 
  

 Mrs Orlando Kellogg  
 Charlestown  
 Essex County  
 N. H. #2276

2017 3225



  
 2017

PLACE.

cashier.

k,

79.



at date of this communication [we



# United States of America

Locals

Boyd's City Express

New York, N.Y.

1860

Center dots Before "Post" and After "Cents"

NO PERIOD  
OR CENTER DOTS  
20L24 G



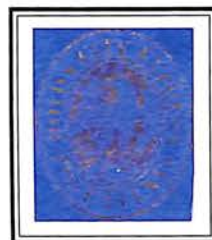
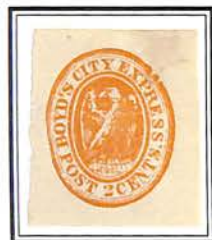
20L16 <sup>TY10</sup>  
Black on Red

20L17  
Black on Lilac

20L18 22.50  
Black on Blue Gray



Center Dots Before "Post" and After "Cents"  
1861



20L19  
Gold

20L20  
Gold on Green

20L21  
Gold on Dark Blue

20L22  
Gold on Crimson

1863



GIBBONS  
REPRINT

20L23  
Black on Red

PERIOD

CENTER  
DOTS

SHOULD BE  
BLACK ON RED  
WRONG COLOR

# United States of America

Locals

Boyd's City Express

New York, N.Y.

1867

No Period or Center Dots



✓ 20L24 20 ✓  
Black on Lilac



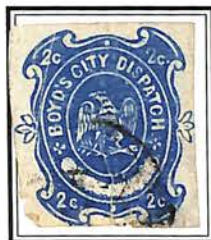
20L25 ✓ ✓  
Black on Blue



✓

## Glazed Surface Paper

1874



20L26  
Light Blue

## Surface Colored Paper

1874



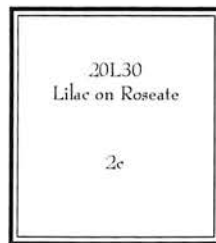
20L28  
Black on Red

1874



20L29 1,500  
Blue on Red

1876



20L30  
Lilac on Roseate

2c

20L30  
Lilac on Roseate

Laid Paper



20L31  
Lilac on Roseate



Certificate # 17,244

29 March 2021

### William T. Crowe

POB 2090, Danbury, CT 06813-2090

[wtcrowe@aol.com](mailto:wtcrowe@aol.com)

I have examined the item illustrated below, submitted to me for an opinion and I am of the opinion that:

submitted as:

<u>Scott Number</u>	<u>Denomination</u>	<u>Year</u>	<u>Color</u>
20L33	2¢	1877	Lilac, on Roseate Laid Paper
Boyd's City Express, New York, NY			

\*\*\*It is Genuine, Used, with a black PAID cancellation. The stamp with corner creases. \*\*\*\*\*  
\*\*\*\*\*



PAID 20L33 25

17,244

*W. T. Crowe*

Expertizer

# United States of America

Locals  
 Boyd's City Dispatch  
 New York, N.Y.  
 1876

Perf. 12<sup>1</sup>/<sub>2</sub>



20L32  
 Lilac on Roseate

Laid Paper

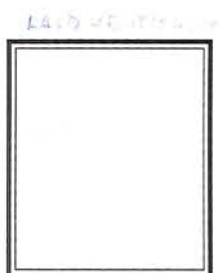


20L33  
 Lilac on Roseate

Glazed Surface Paper



20L34  
 Brown on Yellow



20L32a  
 Lilac on Grayish



20L33a  
 Lilac on Grayish



20L35a  
 Red Lilac on Lilac



20L35b 17.50  
 Gray Lilac on Lilac

Perf. 11, 12, 12<sup>1</sup>/<sub>2</sub>

1877



20L35  
 Violet on Lilac

1877



20L36 a 15  
 Gray on Roseate

1877



20L36a 15  
 Gray on Grayish





If not called for in Ten days return to  
WILLIAM H. COHEN & Co.,  
Hermetically Sealed Goods,  
229 & 231 Washington St.,  
NEW YORK.



*Optel Ex*  
*27 Beaver St*  
*City - 20454*

*off cover single #150*

*20242 LAID PAPER VERTICALLY / LILAC PINK*

*TIED ON ADVERTISING COVER*

*NO COVER VALUE LISTED LV \$1,500*

*Footnote:*

*2037-2042 color trails / some may have been used postally*

# United States of America

Locals

Boyd's Dispatch

New York, N.Y.

1878

Mercury Series - Type I - Inner Frame Line at  
Bottom Broken Below Foot of Mercury  
Wove Paper - Imperforate



20L37 400 ✓  
Black on Pink



300 ✓

## Surface Colored Wove Paper



20L38  
Black on Orange  
Red



20L39  
Black on Crimson

## Laid Paper



20L40  
Black on Salmon



29L41  
Black on Lemon



2150 20L42  
Black on Lilac  
Pink



# United States of America

Locals

Boyd's Dispatch

New York, N.Y.

1878

Mercury Series - Type I - Inner Frame Line at  
Bottom Broken Below Foot of Mercury

Surface Colored Paper - Perf. 12



20L43  
Black on Crimson



20L43A  
Black on Orange  
Red

Wove Paper - Perf. 11, 11 $\frac{1}{2}$ , 12, 12 $\frac{1}{2}$  & Compound



12  
20L44 2.50  
Black on Pink



Wove Paper - Perf. 11, 11 $\frac{1}{2}$ , 12



10  
20L45  
Black on Blue



29.50  
20L46  
Blue on Blue



# United States of America

Locals  
Boyd's Dispatch  
New York, N.Y.

Mercury Series - Type I - Inner Frame Line at  
Bottom Broken Below Foot of Mercury

1880

Wove Paper - Perf. 11, 12, 13 $\frac{1}{2}$



20 P61R



20L47 20  
Black on  
Lavender



20L48  
Blue on  
Lavender

Laid Paper - Perf. 12, 12 $\frac{1}{2}$ , 14



20L49 350  
Black on Pink



20L50 7  
Black on Lilac Pink

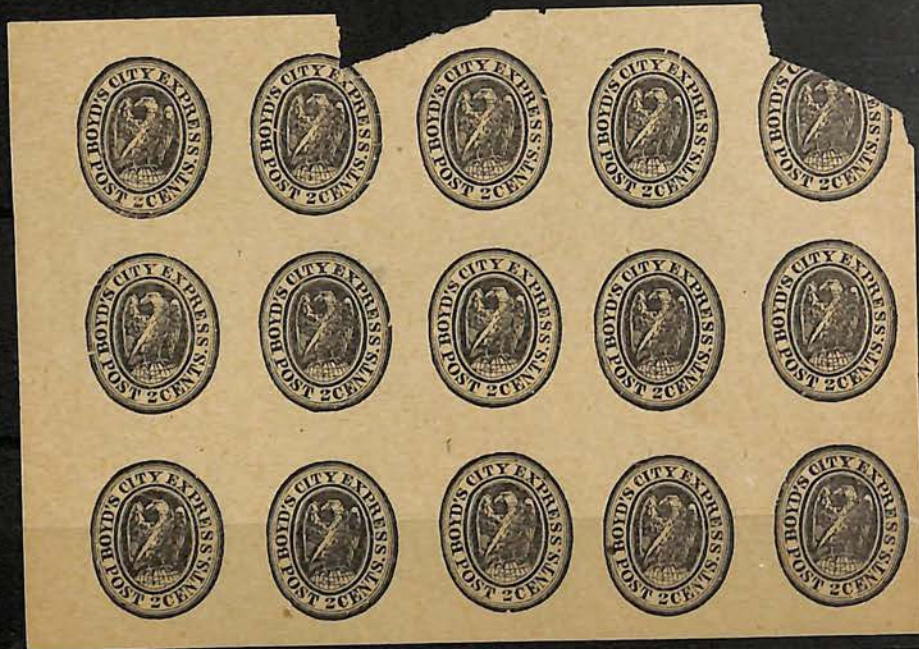




FROM THEREYNOLDS  
CARD MANUFACTURING CO.  
NEW YORK  
WILLIAM



*Wm. H. Solanus*  
*736 Broadway*  
*City*



The Evening Post,

210 Broadway, (P. O. Box 794.)

NEW YORK.

BOYD'S CITY DISPATCH  
PAID  
MAR 17 1882  
1 PARK PLACE, N.Y.



Mr. S. L. Lusk

206 Gray

20L56 1882

20L56  
tied by handstamp  
ADV. COVER  
\$125

GEO. W. CARSON,  
PAPER,  
No. 5 Dey St., Room 3,  
NEW YORK.

BOYD'S CITY DISPATCH  
PAID  
DEC 27  
1 PARK PLACE, N.Y.



Mr. Everett  
Care L. J. P. Bishop  
71 Park Pl

20L56

20L56  
tied by handstamp  
on adv.  
PAPER CO. COVER  
\$150



# United States of America

'Locals  
Boyd's Dispatch  
New York, N.Y.

Mercury Series - Type II - No Break in Frame -  
The Great Toe Raised, Other Toes Touching Line  
1881

Wove Paper - Perf. 11, 12, 13 $\frac{1}{2}$



35<sup>-</sup> 20L51  
Black on Blue ✓



75<sup>-</sup> 20L52  
Black on Pink ✓

Laid Paper



20L53  
Black on Pink



10<sup>-</sup> 20L54  
Black on Lilac Pink ✓

Wove Paper - Perf. 10, 11 $\frac{1}{2}$ , 12, 16 & Compound



20L55 7<sup>-</sup>  
Black on Blue ✓



20L56  
Black on Pink ✓





Mercury Series — Type IV — L70

**Mercury Series-Type IV**

Shading omitted in banner. No period after "Dispatch." Short line extends to left from great toe.



20LU35 45

**1878**

			<b>Diagonally Laid Paper</b>		
20LU33	L70	black		40.00	100.00
20LU34	L70	black, amber			80.00
20LU35	L70	black, cream		50.00	100.00
20LU36	L70	red			50.00
20LU37	L70	red, amber		35.00	45.00
20LU38	L70	red, cream		35.00	80.00
20LU39	L70	red, yellow green			—
20LU40	L70	red, orange			350.00
20LU41	L70	red, fawn			—

**Wove Paper**

20LU42	L70	red		—	800.00
--------	-----	-----	--	---	--------





DOT ERROR 1867



GLAZED SURFACE PAPER Price \_\_\_\_\_



Style No. GK-104BK

NETTED BACKGROUND INNER SEAL 2 THIN LINES Price \_\_\_\_\_



PLAIN BACKGROUND / GLOBE SHADED Price \_\_\_\_\_



n No. GK-102A

DOT BEFORE POST AND AFTER CENT





20L28  
50-

20LU25  
100-



20LU12 (b)  
laid paper \$90

20LU13 AMBER

20LU15

20LU16  
DIAG. LAID PAPER

20LU18  
WUVE

20LU 20

20LU 22  
\$100



20L14  
laid paper

20L26 40-



20L30

20L31

20L32 \$20

20L32 a  
Greyish

20L33  
20-

20L34 20.00  
35.00



20L35 45  
VIOLET/lilac

20L35 a 30  
RED lilac/lilac

20L36 b 17.50  
GRAY/lilac

20L36 45  
GRAY/ROSEATE



20L35 b 17.50  
grey lilac/lilac

20L36 12.50 PAID  
LAID PAPER 17.50  
LAID PAPER







NO PERIOD  
AFTER CENTS

INNER OVAL HAS MEANING

Cat. Price \_\_\_\_\_

Selling Price \_\_\_\_\_

74 L1

SOLID BACKGROUND

Cat. Price \_\_\_\_\_

25<sup>-00</sup>

Selling Price \_\_\_\_\_

OUTER OVAL HAS 3 LINES



Made in Canada



MADE IN CANADA

HECO STYLE 102a

GLAZED SURFACE PAPER  
SOLID BACKGROUND

Price \_\_\_\_\_

15 L15

Cat. Price \_\_\_\_\_

20<sup>00</sup>

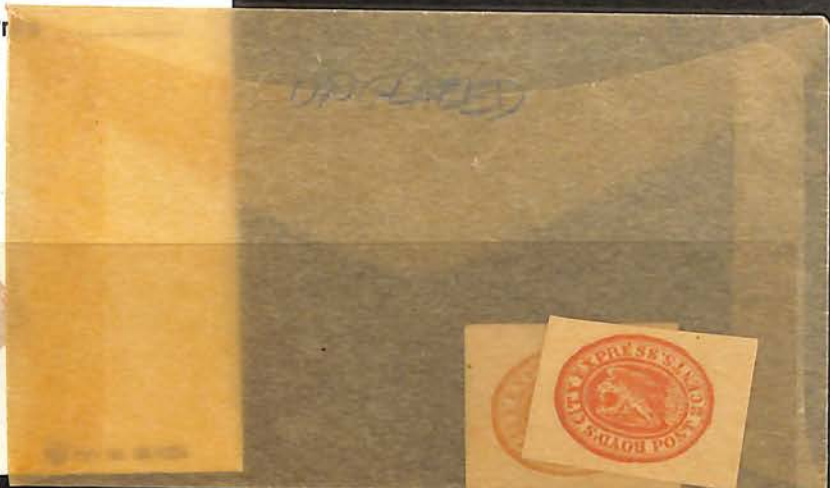
Selling Price \_\_\_\_\_



MADE IN CANADA

HECO STYLE 102a

Price \_\_\_\_\_





TYPE I  
BREAK IN THE  
FRAME LINE  
BELOW FOOT

SURFACE COLORED  
WOVE PAPER  
BLACK, CRIMSON  
20L43

7.00  
50-



WOVE PAPER  
BLACK, PINK  
20L44

1.50

2.50



WOVE PAPER  
BLACK, BLUE  
20L45

10-

15-

BLUE, BLUE  
20L46

27.50



WOVE PAPER  
BLACK, SALMON  
UNHSTED COLOR



WOVE PAPER  
BLACK, LAVENDER  
20L47

8-

TYPE I / PAIR  
LAVENDER  
20-

20-



LAI D PAPER  
BLACK, PINK  
20L49

350

LAI D PAPER  
VERTICALLY  
BLACK, LILAC PINK  
20L50

7-

25-





TYPE II  
NO BREAK  
IN LINE  
GREAT TOE  
RAISED

20L51 95-  
WOVE PIPE II  
BLK/BLUE



20L52  
WOVE  
BLACK, PINK  
\$75-



LAI  
VERTICAL  
20L53  
BLACK  
PINK



HORIZ  
LAI  
LILAC  
PINK  
20L54



VERT.  
LAI



20L37 \$300





TYPE III  
 NO BREAK IN  
 FRAME LINE  
 GREAT TOE  
 TOUCHING  
 LINE

20655 4-



20656 TYPE III  
 .40  
 WOVE  
 BLACK, PINK







20 LU 38 27-40



RARE

20 LU 42

WOLF





BOYD'S CITY  
SEP 15 1864



1864

x





20641  
9125-



BOYD'S BANKING AND INSURANCE SPECIAL DISPATCH, No. 1 PARK PLACE.

JAMES BUELL, *President.*  
E. H. PERKINS, Jr., *Cashier.*

EDWARD TOWNSEND, *Assistant Cashier.*  
PETER J. GRAHAM,

# The Importers' & Traders' National Bank of New York,

*New York,* ..... 1880.



You are credited as proceeds for collection of items as stated below. Distant items may not be paid at date of this communication (we credit after waiting, as we suppose, a sufficient time to receive notice of non-payment) and may be returned unpaid, in which case they will be debited to your account.

NOTE OR BILL.	AMOUNT.	EXPENSES.	PROCEEDS.

Please send Pass Book, with this notice, and withdraw unpaid collections.

To .....



BOYD'S BANKING AND INSURANCE SPECIAL DISPATCH, No. 1 PARK PLACE.

JAMES BUELL, *President.* E. H. PERKINS, Jr., *Cashier.* Edw'd TOWNSEND, *Assist. Cashier.*

# The Importers' & Traders' National Bank of New York,



New York, 7.6 1876.

You are credited as proceeds for collection of items as stated below. Distant items may not be paid at date of this communication (we credit after waiting, as we suppose, a sufficient time to receive notice of non-payment) and may be returned unpaid, in which case they will be debited to your account.  
Yours respectfully, E. H. PERKINS, Jr., *Cashier.*

NOTE OR BILL.	AMOUNT.	EXPENSES.	PROCEEDS.
<i>Register</i>			<i>54365</i>
<i>Card</i>			<i>10250</i>

Please send Pass Book, with this notice, and withdraw unpaid collections.

To

*Guita Perch*  
*24 My annu*

20LUX4  
154 mm x  
105 mm  
1886 RARE  
CV  
EV \$500

108

BOYD'S BANKING AND INSURANCE SPECIAL DISPATCH, No. 1 PARK PLACE.

JAMES BUELL, *President.* E. H. PERKINS, Jr., *Cashier.* Edw'd TOWNSEND, *Assist. Cashier.*

# The Importers' & Traders' National Bank of New York,



New York, Oct. 6 1877.

You are credited as proceeds for collection of items as stated below. Distant items may not be paid at date of this communication (we credit after waiting, as we suppose, a sufficient time to receive notice of non-payment) and may be returned unpaid, in which case they will be debited to your account.  
Yours respectfully, E. H. PERKINS, Jr., *Cashier.*

NOTE OR BILL.	AMOUNT.	EXPENSES.	PROCEEDS.
<i>Osborn</i>			<i>2600</i>
		<i>Exp</i>	

Please send Pass Book, with this notice, and withdraw unpaid collections.

To *Jaffoy*

*437*

20LUX5  
1887  
4400

E60- 3108



1830-OVER A CENTURY OF SERVICE-1935

ESTABLISHED 1830  
THE OLDEST AGENCY FOR DIRECT ADVERTISING IN THE WORLDLocal Post Stamp  
issued 1856-1860

# BOYD'S CITY DISPATCH

EDGAR JULIAN WILLIAMS, Mgr.

Office: 114 to 120 East 23d Street, New York  
Receiving and Shipping Depts., 115 to 119 East 22d StreetTELEPHONES  
★ GRamercy 5-4600CABLE ADDRESS  
"BOYDISPATCH"

INCORPORATED

Local Post Stamp  
issued 1878-1880

Departments for  
 COMPILING SPECIAL LISTS; ADDRESSING TO ALL TRADES, PROFESSIONS, ETC.  
 FAC-SIMILE LETTERS REPRODUCED; TYPEWRITING; WRAPPING; FOLDING; MAILING

Sept. 28, 1936

Mr. Sidney H. Gittelson,  
 603 Myrtle Ave.,  
 Brooklyn, N.Y.

Dear Sir:

Your attention is directed to our facilities for handling the addressing and mailing of campaign literature.

As veterans in work of this nature we have handled many of the larger political mailing campaigns of the last fifty years. We can relieve you of much tiresome detail and all orders are completed within time originally agreed on -- a most important feature.

Please keep us in mind during the approaching campaign. A letter or phone call requesting quotations or information will receive immediate attention and representative will call if you so desire.

Very truly yours,

BOYD'S CITY DISPATCH, INC.

R.B. Sickles - City Dept.

RBS:AC





# BOYD'S CITY DISPATCH

TELEPHONES  
BEEKMAN 4540-4541  
CABLE ADDRESS  
"BOYDISPATCH"

**E. J. WILLIAMS, Manager**  
**19 & 21 Beekman Street, New York**

DEPARTMENTS FOR  
COMPILING SPECIAL LISTS; ADDRESSING TO ALL TRADES, PROFESSIONS, ETC.  
FACSIMILE LETTERS REPRODUCED; TYPEWRITING; WRAPPING; FOLDING; MAILING  
DELIVERY OF CIRCULARS, CATALOGUES, SAMPLES, BOOKS, ETC.. IN NEW YORK

November 7, 1923.

Mr. H. B. Gove,  
621 Hippodrome Building,  
Cleveland, Ohio.



Dear Sir:

We take pleasure in enclosing an original specimen of the last Boyd's stamp, issued in 1878, when our Government absorbed the activities of private posts. Up to that time, our stamps and stamped envelopes were on sale in local drug stores where we maintained letter boxes. The entire collection contains forty specimens, some of them quite rare and valuable, but the enclosed is the only example of which we have sufficient surplus for distribution and we trust that you will find it of interest.

Very truly yours,

M (Enc).

BOYD'S CITY DISPATCH,

Advertising Department.





RED ON  
AMBER & YELLOW

1867

New York



Mess Gasherie Emery & Co  
48 Walker

L675

20LU14  
RED/CREAM  
TIED  
3300



20LU14  
RED/CREAM  
UNUSED

20 LU 14



MAY 1867

20LU36 1878 Boyd's Dispatch, red  
on white, used w/purple handstamp,  
Scott \$50.00, locals & classics

Geo. Mas...

Low Mep. Luffman & Kemp





*Thos. Cooper Sen  
28 Platt St*



C825

236113

172-09000-101695

**5004** Carriers & Locals  **BOYD'S CITY/EXPRESS**

POST Oval cml on Buff env, octagonal h/s "PAID/J.T.B." at UR, addr New York, Fine (PH)...\$70



*J. W. Francis M.D.  
1 Bond St.*

1858.





20 LU 38  
RED, CREAM  
(L70)  
laid paper \$35<sup>all</sup>

20 LU 44  
RED, CREAM  
laid paper  
(L71)  
\$25<sup>all</sup>



Miss Nellie Merrill

BOYD'S CITY/ DEC 10/ EXPRESS POST  
black 31x24mm, and boxed octagon PAID  
J.T.B. NLK52. 1859.

Type H<sub>9</sub>

No 47 6<sup>th</sup> Avenue

N.C.



J. EMMETT HEERDT  
Importers,  
98 WATER ST., NEW YORK.



NOV 30 1882  
PARK PLACE, N.Y.

L. Eissman Esq.  
No 699 Broadway



PAID  
J.T.B.



W. Salpini Esq.  
103 Chambers St

North British & Mercantile Insurance Co.  
of London and Edinburgh.  
Established 1809.  
United States Branch, 54 William Street,  
New York.

BOYD'S CITY  
PAID  
APR 7 1883  
PARK PLACE, N. Y.



North British & Mercantile Insurance Co.,

P.O. Box No. 43,  
54 William St.  
NEW YORK.



20453  
\$225-

1852  
1852

NEW-YORK  
JUN 29  
5 CTS.



Mr Francis Gailley  
Walton P. O.  
Delaware County  
New York

Post June 30.  
delivered July 1.

PAID  
178

NOV 19 1852  
EXPRESS POST

Jane Oakley

2044  
\$250

40-

Mr John Mace  
75 Carmines

John V Brown  
Pech & Staffords office  
Chapel street  
New Haven Ct, 125<sup>00</sup>




XLD

35-



1845  
N. Y.



Mr Charles J. Harris

530 Hudson St

New York

1828



Mr John Erwin

Tavern Keeper

old Chester

D: 6



20L43 (a)  
Surface label  
per 12  
FAKE

1851



John S. Dickerson

58 North Street

New York

DM 125-140.02



20L1  
27.50

20L3 -  
VERY SCARCE  
NO SHADY  
BACKGROUND

20L4 15-

20L7  
5-

20L8 \$20-

20L9 12.50

20L4  
1880  
REPRINT.

20L9  
TYPE IV

20L8  
PAID  
JTB 35-

COLOR  
SHOULD BE  
OLIVE

20L11  
65-

27.50  
PAID JTB

20L12  
TYPE VIII  
20-

20L14  
TYPE IX  
6-

PAID 5-  
JTB

20L12  
50-

20L13  
50-

20L15

TRACES OF  
"5" FROM  
CENTS  
From altered  
plate  
20L15a

? S. ALLEN TAYLOR  
EAGLE IS WRONG

20L16





20L17  
PAID CANC.  
\$75



20L17  
VARIETY  
PERIOD  
SHIFTED  
IN OUTER  
VALINES

20L18  
10-



20L19 \$75

20L18a  
CENTS INSTEAD  
OF CENT \$75



20L20



20L21  
\$750

20L22  
15-

20L23  
10-

Grey  
Black, Pair \$75  
Apricot  
2nd  
PRINTING

20L23a  
Tate Beche  
Pair \$75

? DULL  
ORANGE  
UNGLAZED



20L24 30-

20L24  
TYPE XI

20L25  
TYPE XI

15-





20 LU  
\$40  
175

20 LU 2  
35-

blue, amber  
diagonally laid  
20 LU 5 \$175

20 LU 4  
60-

RARE  
blue, yellow  
diagonally laid  
20 LU 6

WITH GUM ?

20 LU 8  
WOVE  
CUT SQUARE OF  
ENVELOPE  
ENTIRE CATS  
\$175  
EV \$75

20 LU 7  
RARE

ON AMBER  
HORIZONTALLY  
LAID

RE-  
PRINTS

REPRINT  
VERTICALLY LAID

20 LU 1  
\$40-

REPRINT  
DIAGONALLY  
LAID

REPRINT  
ON VERTICALLY  
LAID PAPER





III 20256 12x12  
THE SILK ASSOCIATION OF AMERICA,  
No. 446 Broome Street,  
New York.



BOYD'S CITY DISPATCH  
PAID  
JUN 27 1885  
PARK PLACE, N. Y.

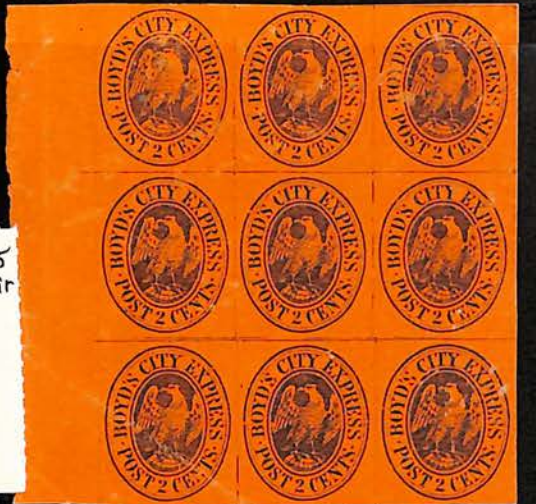
Paul Weinmann Esq  
112 Water St  
New York City

150—  
200

Boyd's City  
PAID  
1 Park Place.

C47a  
795









GLAZED  
20 L8 TYPE VI PAPER  
REPRINT OF 1880  
WITHOUT RECTANGULAR FRAME

20 L15 a  
BLK/4  
1 CENTS  
—



20 L16a  
tete beeche  
block of 4  
\$65



① TETE BEECHE  
A B  
B A

② TETE BEECHE  
A B  
B A

③ TETE BEECHE  
B A  
A B







20L53  
TYPE III  
Black of 4  
EV ~~475~~  
P25



BROKEN LINE  
BIG-TOE RAISED  
BLACK, PINK  
20L44



BLACK, LAVENDER  
20L47



SOLID LINE  
WITH TOES TOUCHING  
LINE  
20L50





20 L15

1 CENT

2 CENTS

1 CENTS

