

United States

ILLINOIS

CHICAGO LOCALS

BRADY AND COMPANY'S CHICAGO PENNY POST

DATE OF ISSUE UNKNOWN

1860?

ORIGINAL HAS FRAME LINE



FACSIMILE TYPE I NO FRAME LINE.



FACSIMILE TYPE II NO FRAME LINE



FACSIMILE TYPE III NO FRAME LINE.



Brady & Company
New York, New York
1857-1858

Purchased from C. C. Clark in March 1857.
Post probably closed early in 1858

Paper Coloured Through



1C Mail box
Red on Yellow

REPRINT

Brady & Company
 New York, New York
 1857-1858

Purchased from C. C. Clark in March 1857.
 Post probably closed early in 1858

Forgery A, Scott's Forgery
 Paper Coloured Through



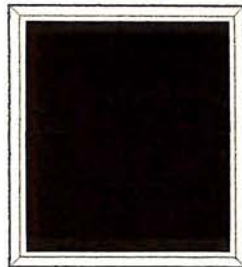
1C Mail box
 Red on Yellow

Forgery B
 Paper Coloured Through



1C Mail box
 Red on Yellow

Forgery C, Taylor's Forgery
 White Horizontally Laid Paper

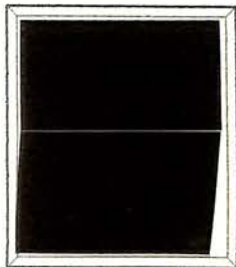


1C Mail box
 Black

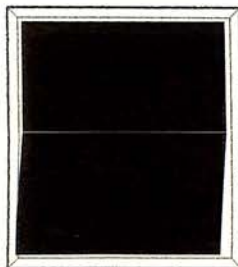


1C G-GREEN on YELLOW
 paper colored through
 VERTICALLY LAID

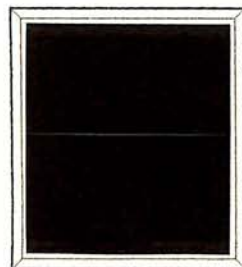
Surface Coloured Glazed Paper



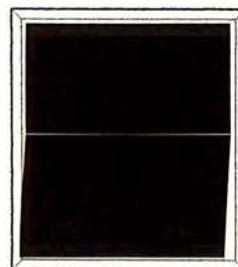
1C Mail box
 Black on
 Yellow



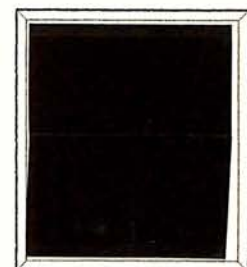
1C Mail box
 Black on
 Green



1C Mail box
 Black on
 Magenta



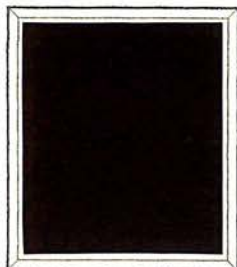
1C Mail box
 Black on
 Vermilion



1C Mail box
 Black on
 Salmon

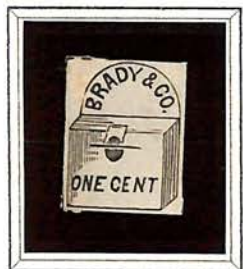
Brady & Company
New York, New York
1857-1858

Forgery D
Paper Coloured Through

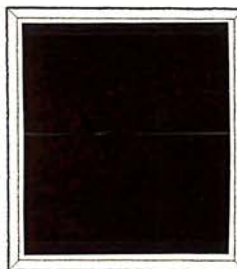


1C Mail box
Red on Yellow

Forgery E

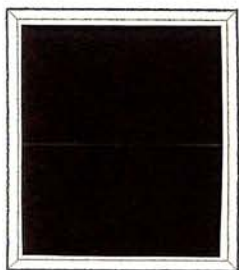


1C Mail box
Black on
White Wove Paper



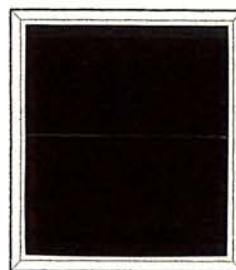
1C Mail box
Green on Pale Grey
Coloured Through Paper

Forgery F



1C Mail box
Dull Red on Medium Hard
Coloured Through Yellow Paper

Forgery G



1C Mail box
Black on
White Paper

Broadway Post Office
1849-1859
New York, New York



Forgery E
by Thomas Woods for Hussey
Setting II, Block of Six



Black on
Greyish White Wove Paper

Up to June 1866 approximately 3,000
were printed and delivered

United States of America

Locals
Brainard & Co.
Albany, N.Y.
1844



24L1
Black

© RIG.



24L2
Blue

© RIG.



United States of America

Locals

Brigg's Despatch

Philadelph

184

Cat. Price _____ Our Price _____



25L1
Black on Yellow



Leuchtturm 341 010

1848



25L4
Gold on Yellow
Glazed



25L5
Gold on Black
Glazed



25L6
Gold on Pink

Broadway Post Office New York, N.Y.

1849



26L1
Gold on Black
Glazed

1851



26L2
Black ✓



✓



✓

United States of America

Locals

Bronson & Forbes' City Express Post Chicago, Ill. 1855



27L1
Black on Green

27L2
Black on Lilac

Brooklyn City Express Post Brooklyn, N.Y. 1855 - 1864 Glazed Surface Paper



28L1
Black on Blue



28L2
Black on Green



28L3
Black on Crimson



28L4
Black on Pink



28L5
Black on Dark Blue



28L6
Black on Orange



Unsurfaced Paper Colored Through



28L7
Black on Pink

Brooklyn City Express Post 1855-1864 Brooklyn, New York

Forgery AA Glazed Surface Coloured Paper



1C Black on Green



1C Black on Blue Green

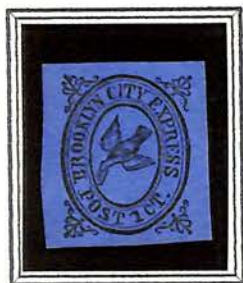


1C Black on Dull Blue



1C Black on Dark Blue

Forgery BB Glazed Surface Coloured Paper



1C Black on Blue



1C Black on Green



1C Black on Red



1C Black on Violet-Pink



1C Black on Yellow



1C Black on Orange



BLACK on VIOLET PINK



BLUE on BRIGHT VIOLET-PINK

Brooklyn City Express Post
 1855-1864
 Brooklyn, New York

Forgery BB, Taylor's Forgery
 Paper Coloured Through



1C Lake on Buff



1C Red on Buff



1C Pink on Buff



1C Blue on White



1C Lake on Blue



1C Lake on Green



1C Red on Yellow



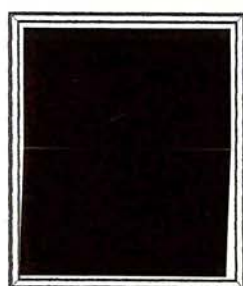
1C Blue on Yellow



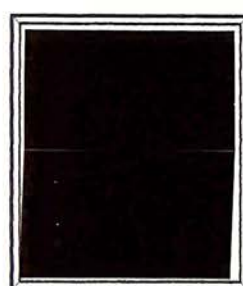
1C Blue on Green



1C Blue on Pink



1C Blue on Pinkish Violet



1C Blue on Light Violet



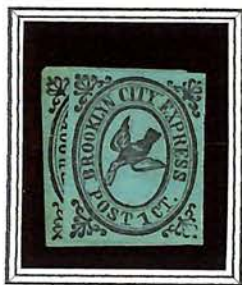
1C Blue on Violet

Brooklyn City Express Post
1855-1864
Brooklyn, New York

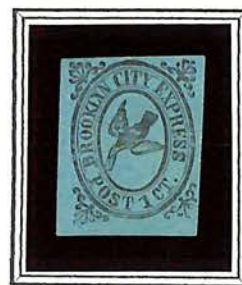
Forgery CC, Scott's Forgery
Glazed Surfaced Coloured Paper



1C Black on
Green



1C Black on
Bluish Green



1C Black on
Greenish Blue

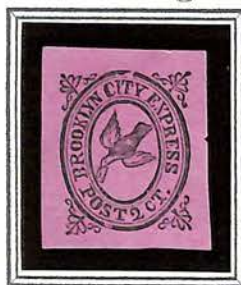
Forgery DD
Unglazed Surface Coloured Paper



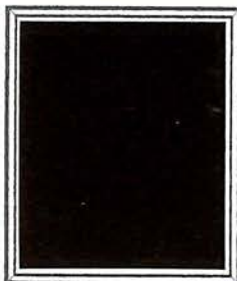
1C Black on
Dull Green

Brooklyn City Express Post
1855-1864
Brooklyn, New York

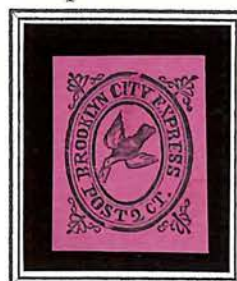
Forgery A
Slightly glazed Surface Coloured Paper



2C Black on
Dull Pink



2C Black on
Pale Pink



2C Black on
Bright Pink



2C Black on
Crimson



2C Black on
Crimson-Maroon

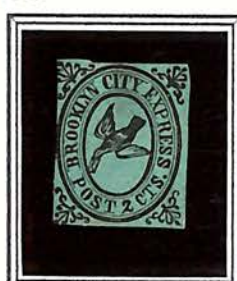
Forgery B, Taylor's forgery
Surface Coloured Glazed Paper



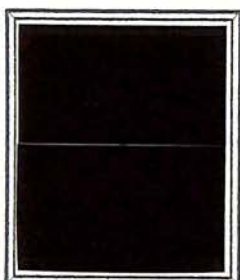
2C Black on
Bright Pink



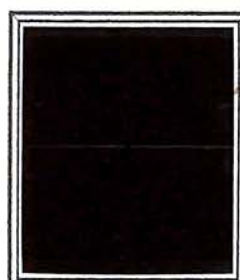
2C Black on
Bright Blue



2C Black on
Pale Green



2C Red on
Yellow



2C Red on
Grey

Brooklyn City Express Post
1855-1864
Brooklyn, New York

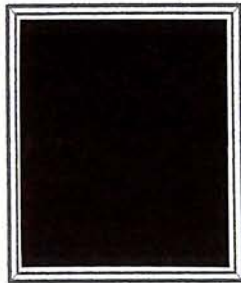
Forgery B, Taylor's forgery
Paper Coloured Through



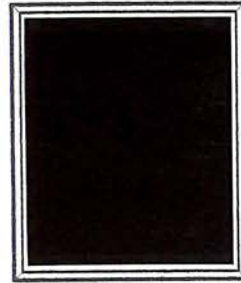
2C Black on
Flesh



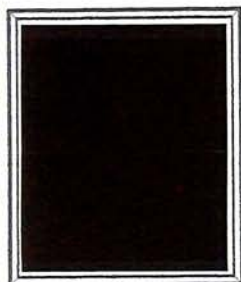
2C Black on
Dull Magenta



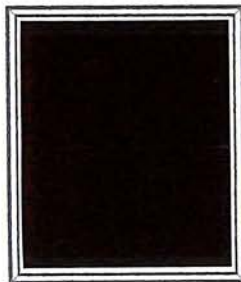
2C Black on
Light Dull Blue



2C Black on
Pale Grey

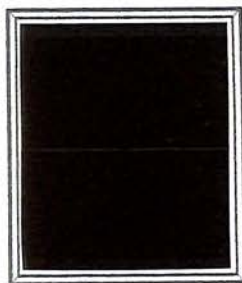


2C Black on
Yellow



2C Red on
Pale Blue

White Wove Paper



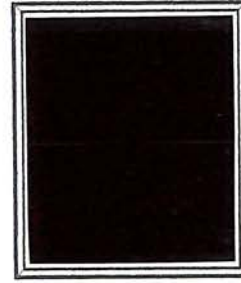
2C Purple



2C Red



2C Green



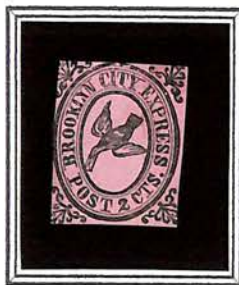
2C Blue

Brooklyn City Express Post
1855-1864
Brooklyn, New York

Forgery C, Scott's Forgery
Slightly Glazed Surface Coloured Paper



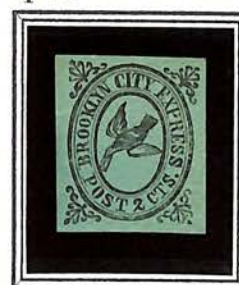
2C Black on
Orange Red



2C Black on
Pale Pink

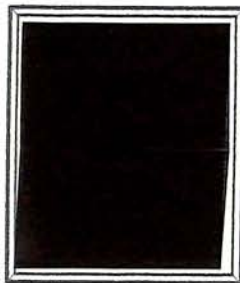


2C Black on
Dull-Blue Green

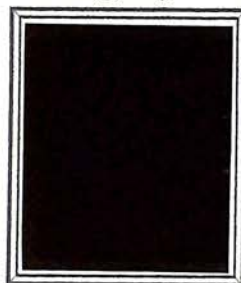


2C Black on
Greenish Blue

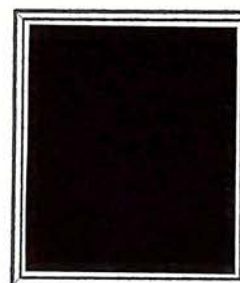
Forgery D



2C Black on
Dull Yellow



2C Black on
Pale Brown



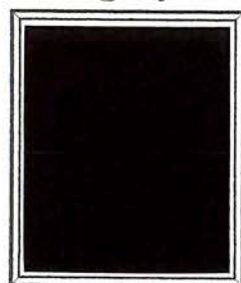
2C Black on
Thick White

Forgery E



2C Black on
Unglaxed Crimson

Forgery F



Red on
White Wove Paper

United States of America

Locals

Browne & Co.'s City Post Office

Cincinnati, Ohio

1852 - 1855



29L1
Black



29L2
Black



v

Browne's Easton Despatch

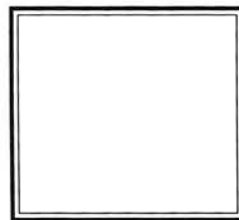
Easton, Pa.

1857

Glazed Surface Paper

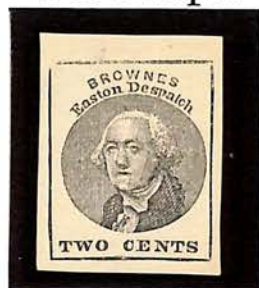


30L1
Black on Red



30L2
Black on Red

Wove Paper



30L3
Black

v

United States of America

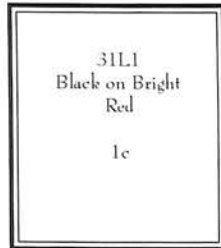
Locals

Brown's City Post

New York, N.Y.

1876

Glazed Surface Paper



31L1
Black on Bright
Red
1c



31L2
Black on Yellow



31L3
Black on Green *4.10, 2.75*



31L4
Black on Violet



31L5
Black on
Vermilion

Bury's City Post

New York, N.Y.

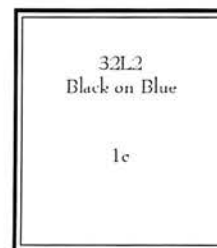
1857

Embossed w/o Color



32L1
Blue

Handstamped



32L2
Black on Blue

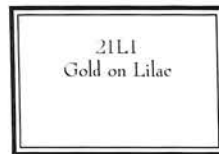
1c

32L2
Black on Blue

United States of America

Locals

Bradway's Despatch
Millville, N.J.



21L1
Gold on Lilac

Brady & Co.
New York, N.Y.
1857



22L1
Red on Yellow

Brady & Co.'s Penny Post
Chicago, Ill.
1860



23L1
Violet



CALIFORNIA PENNY POST CO.
34 LUT 7 CENT VERMILLION
ON US 3 CENT U10 ENVELOPE
1855-1859 CV \$225

The Penny-Post Co.
deliver letters enclosed
in these Envelopes,
immediately on the
distribution of the
Mails, in

San Francisco,
Sacramento,
Stockton,
Benicia,
Marysville,
Coloma,
Nevada,
Grass Valley,
Mokelumne Hill:



TO THE PENNY POST CO.

Care of _____

No. _____ Street,

Cal.

The party to whose care this is directed, is hereby authorized to open the same
and appropriate its contents.

United States of America

Locals

Carnes City Letter Express
San Francisco, California
1864

Ovpt'd. w/ Blue "X"



35L1
Rose



35L2
Rose



35L3
Bronze



35L4
Gold



35L5
Silver



35L6
Black ✓



35L7
Blue



35L8
Red ✓

United States of America

Locals

G. Carter's Despatch
Philadelphia, Pa.

1849 - 1851



✓ ? POSSIBLY
GENUINE
100-



36L1
Black ✓



36LU1 - Blue on Buff



United States of America

Locals
Cheever & Towle
Boston, Mass
1849



37L1
Blue

Chicago Penny Post
Chicago, Ill
1862



38L1
Orange Brown

Cincinnati City Delivery
Cincinnati, Ohio
1883



39L1
Carmine

Cincinnati City Delivery
Cincinnati, Ohio
1883



(1C) Carmine

Operated by J. Staley. Started in January 1883, suppressed after a few weeks. of the 25,000 stamps printed only 5,000 were postaly used, the rest were sold to collectors.

City Despatch Post (GREIG'S)
Opened February 1st, 1842
Founded by Henry Thomas Windsor

Forgery A, Scott's Forgery
White Wove Paper



3C Washington
Black

Glazed Surface Coloured Paper



3C Washington
Black on Green



3C Washington
Black on Pink

City Despatch Post
 Opened February 1st, 1842
 Founded by Henry Thomas Windsor

Forgery B, Imitation of Forgery A
 White Wove Paper



3C Washington
 Black

Surface Coloured Glazed Paper



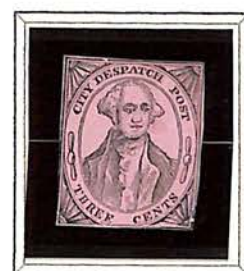
3C Washington
 Black on Green



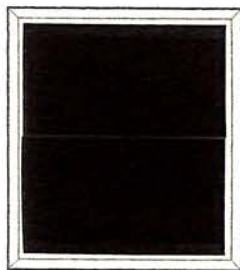
3C Washington
 Black on Yellow



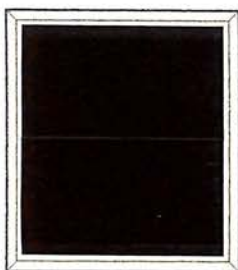
3C Washington
 Black on Orange



3C Washington
 Black on Pink



3C Washington
 Black on Vermilion



3C Washington
 Black on Crimson



3C Washington
 Black on Pale Mauve

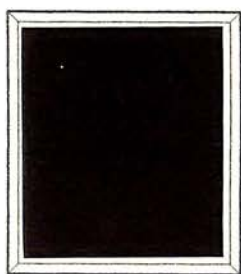
City Despatch Post
Opened February 1st, 1842
Founded by Henry Thomas Windsor

Forgery B, Imitation of Forgery A
Paper Coloured Through

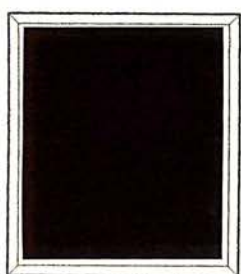


3C Washington
Black on Pale Dull Blue

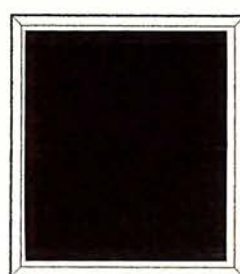
Forgery C
Surface Coloured Glazed Paper



3C Washington
Black on Blue Green

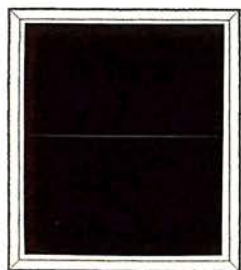


3C Washington
Black on Magenta



3C Washington
Black on Pale Crimson

White Wove Paper



3C Washington
Black

United States of America

Locals
City Dispatch
New York, N.Y.
1846



160L1
Red

City Dispatch
Philadelphia, Pa.
1860



✓
✓ 41L1 7.50
Black 6915.
✓

City Dispatch
St. Louis, Mo.
1851



42L1
Blue

United States of America

Locals

City Dispatch Post Office

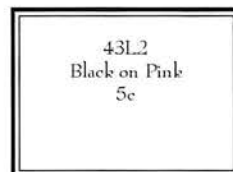
New Orleans, Louisiana

1847

Glazed Surface Paper



43L1
Black on Green

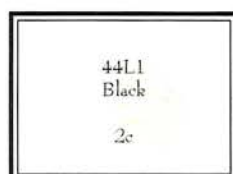


43L1
Black on Green

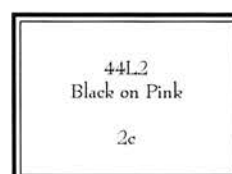
City Express Post

Philadelphia, Pa.

1846



44L1
Black



44L2
Black on Pink



✓ 44L3 ORIG. -
Black on Yellow COULD BE RARE

A SCOTT



B TAYLOR



CITY DISPATCH POST
(GRIEG'S)
NO C IN BACKGROUND
OF OVAL
THREE CENTS

CITY DISPATCH POST
(COLE'S)
C IN BACKGROUND
OF OVAL
TWO CENTS



FORGERY B
(S. ALLEN TAYLOR)



FORGERY C
(S. ALLEN TAYLOR)



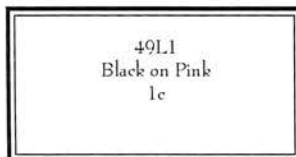
United States of America

Locals
Clark & Co.
New York, N.Y.
1857



48L1
Red on Yellow

Clark & Hall
St. Louis, Mo.
1851



49L1
Black on Pink

Clark & Company
 New York, New York
 1857-1858

Established by C. C. Clark in February 1857 then
 sold to Brady & Company after March 1857.

Post probably closed early in 1858

Forgery A, Scott's Forgery
 Paper Coloured Through



1C Mail box
 Red on Yellow

Forgery B, Taylors Forgery
 Wove Paper, Coloured Through



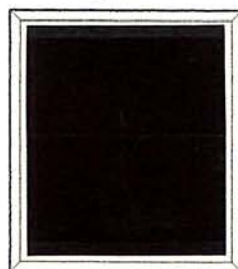
1C Mail box
 Red on
 Yellow



1C Mail box
 Green on
 Green



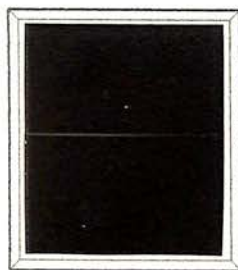
1C Mail box
 Blue on
 Red Violet



1C Mail box
 Black on
 Orange Buff



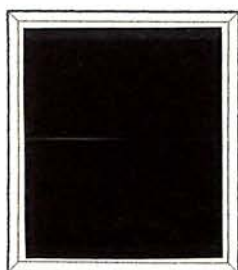
1C Mail box
 Blue on
 Blue



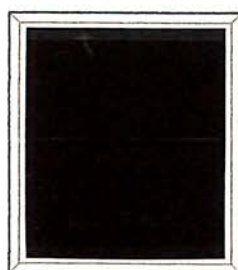
1C Mail box
 Black on
 Pale Violet Blue



1C Mail box
 Black on
 Dull Grey Blue



1C Mail box
 Green on
 Yellow



1C Mail box
 Blue on
 Pink



1C Mail box
 Violet on
 Yellow

Clark & Company New York, New York

Forgery B. Taylors Forgery
White Wove Paper



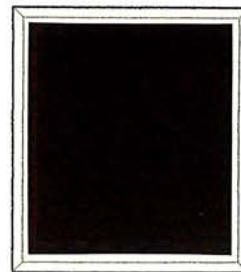
1C Mail box
Red



1C Mail box
Blue



1C Mail box
Dull Blue



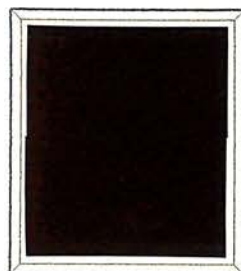
1C Mail box
Black



1C Mail box
Carmine



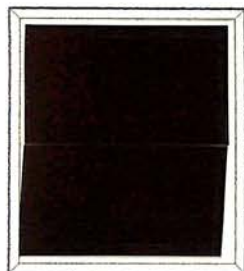
1C Mail box
Dull Purple



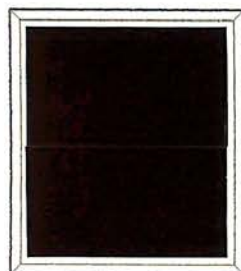
1C Mail box
Pink



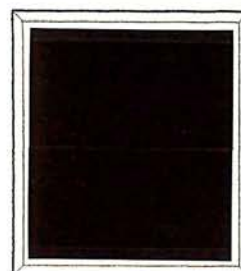
1C Mail box
Brown



1C Mail box
Dull Orange



1C Mail box
Pale Mauve



1C Mail box
Green

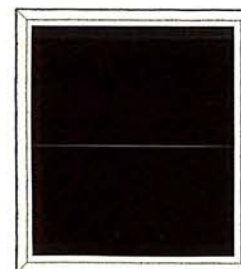
Surface Coloured Glazed Paper



1C Mail box
Red on
Grey Violet



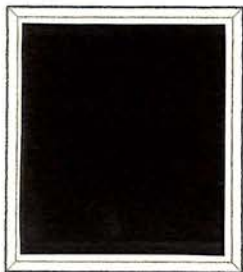
1C Mail box
Red on
Yellow



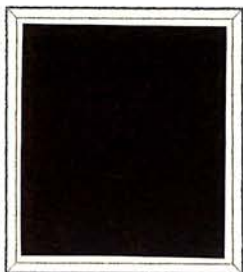
1C Mail box
Carmine on
Grey Blue

Clark & Company New York, New York

Forgery B, Taylors Forgery Laid Paper



1C Mail box
Ultramarine



1C Mail box
Blue on
Pink

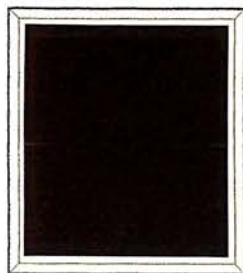


1C Mail box
Blue on
Pale Purple



1C Mail box
Black on
Pink

Forgery C



1C Mail box
Blue



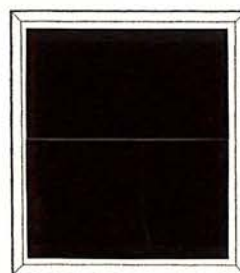
1C Mail box
Carmine

Forgery D



1C Mail box
Pale Blue on
White Wove Paper

Forgery E



1C Mail box
Red on
Yellow Coloured through

United States of America

Locals
Cook's Dispatch
Baltimore, Maryland
1853



51L1
Green on White

Price _____



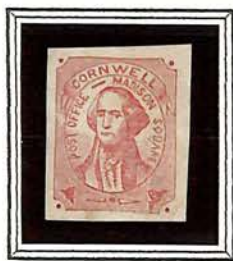
52L1
Red on Blue



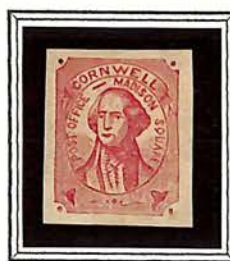
52L2 ✓
Red

Cornwall's Madison Square Post Office
New York, New York
1855-1856

Forgery A
Printed by Thomas Woods for Hussey



(1C) Washington
Dull Pink



(1C) Washington
Dull Red



A3 (HUSSEY)

Forgery B
Scott's Forgery



(1C) Washington
Red

Cornwall's Madison Square Post Office
 New York, New York
 1855-1856

Forgery C
 Taylor's Forgery
 White Wove Paper



(1C) Washington
 Red

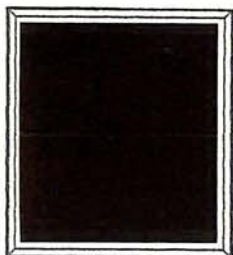


(1C) Washington
 Pale Purple

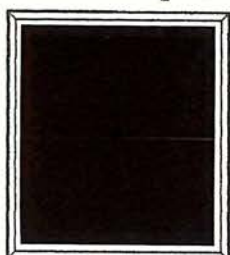


(1C) Washington
 Green

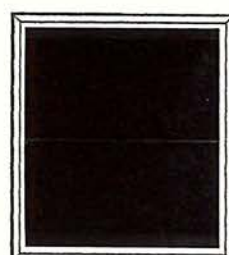
Laid Paper



(1C) Washington
 Pale Purple

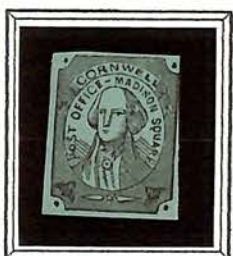


(1C) Washington
 Deep Brown



(1C) Washington
 Green

Paper Coloured Through



(1C) Washington
 Black on
 Grey Green



(1C) Washington
 Black on
 Violet Blue



(1C) Washington
 Red on
 Greyish

Forgery D
 White Wove Paper



(1C) Washington
 Pale Dull Red

Crosby's City Post
New York, New York
1870



2C Carmine
Imperforate *FAK*

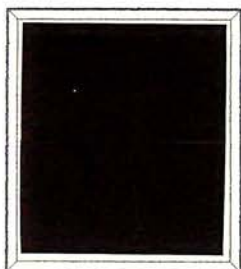
Founded by Oliver H. Crosby.
Stamp designed and printed by J. W. Scott.

Crosby's City Post
New York, New York
1870-1871

Forgery A, Taylor's Forgery
White Wove Paper



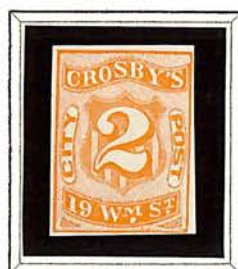
2C Red



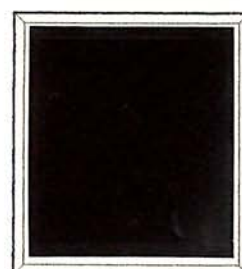
2C Yellow



2C Purple



2C Orange



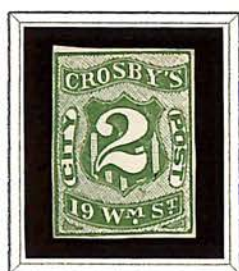
2C Ochre



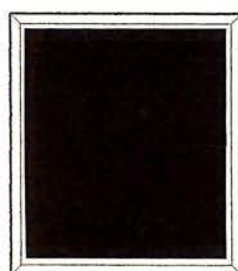
2C Violet



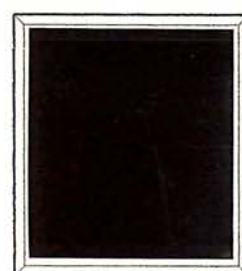
2C Pink



2C Green

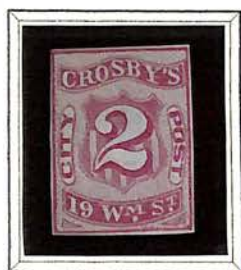


2C Chocolate

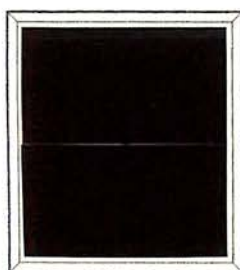


2C Slate

Surface Coloured Paper



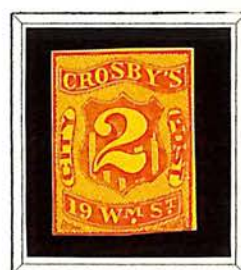
2C Red on
Grey Violet



2C Black on
Yellow



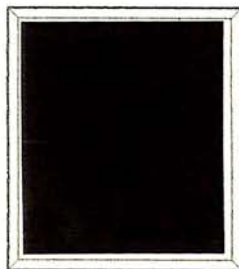
2C Violet on
Yellow



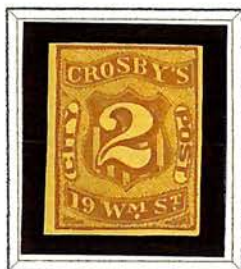
2C Red on
Yellow

Crosby's City Post
New York, New York
1870-1871

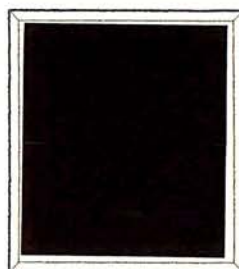
Forgery A, Taylor's Forgery
Paper Coloured Through



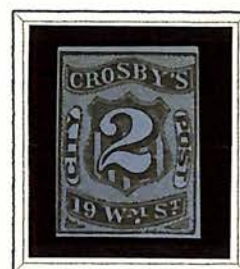
2C Red on
Yellow



Purple on
Yellow

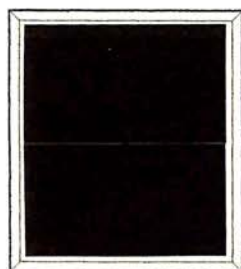


Black on
Scarlet



Black on
Dull Blue

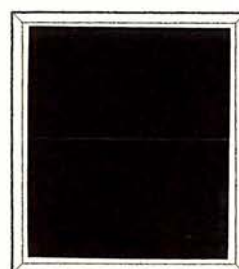
Forgery B, Probably by Taylor
Numeral 2 in Oval



2C Brown



2C Orange



2C Blue

United States of America

Locals

Cressman & Co's. Penny Post

Philadelphia, Pa.

1856



53L1
Gold on black.

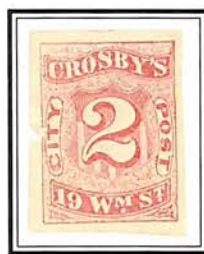


53L2
Gold on Lilac

Crosby's City Post

New York, N.Y.

1870

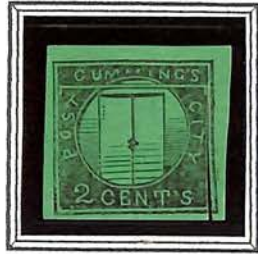


54L1 [✓] *CRIG.*
Carmine _✓



Cummings' City Post
1844
New York, New York

Forgery A



2C Black on
Green Glazed
Surface Coloured Paper



2C Black on
White Wove
Paper

Forgery B, Taylor's Forgery
Surface Coloured Paper



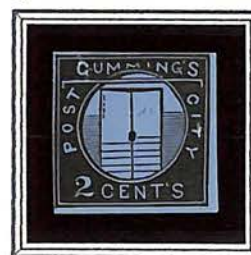
2C Black on
Green Glazed



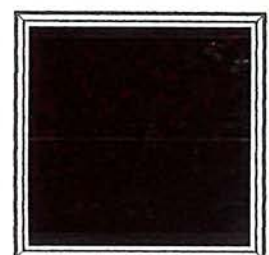
2C Black on
Vermilion Glazed



2C Black on
Magenta

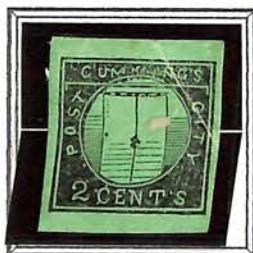


2C Black on
Light Blue



2C Black on
Orange

Paper Coloured Through



2C Black on
Green

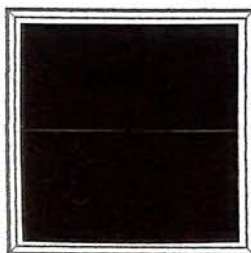


2C Black on
Light Blue

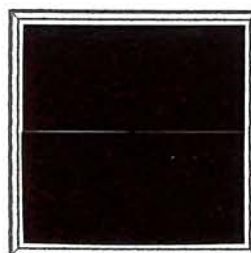


2C Black on
Yellow

Creame Paper

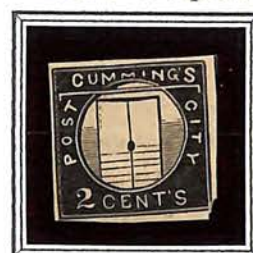


2C Brown



2C Brown

White Paper



2C Black



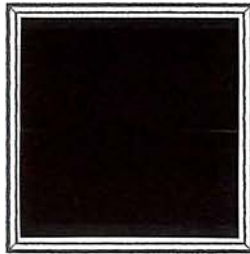
2C Red

Cummings' City Post
 1844
 New York, New York

Forgery C
 Glazed Surface Coloured Paper



2C Black on
 Green

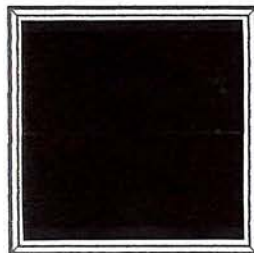


2C Black on
 Yellow

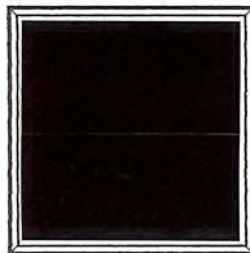


2C Black on
 Vermilion

Paper Coloured Through



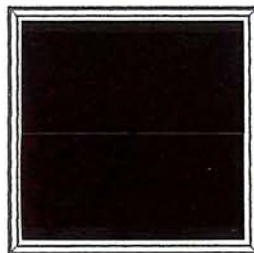
2C Black on
 Pink



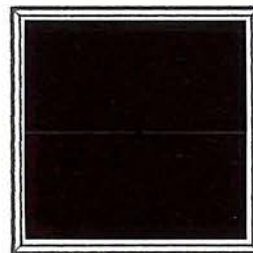
2C Black on
 Flesh



2C Black on
 Grey

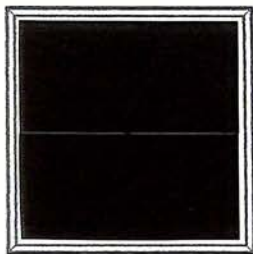


2C Blue on
 Grey

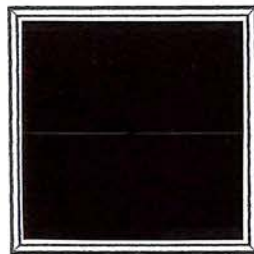


2C Black on
 Magenta

Forgery D



2C Black on
 Green Glazed

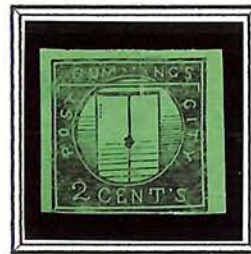


2C Black on
 Vermilion Glazed

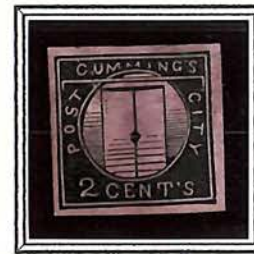
Forgery E



2C Black on
 Yellow Glazed



2C Black on
 Green Glazed



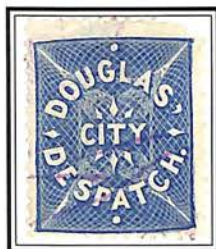
2C Black on
 Magenta

United States of America

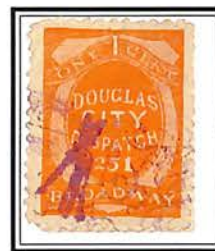
Locals
 Douglas's City Despatch
 New York, N.Y.
 1879
 Perf. 11



59L1 ORIG ✓
 Pink 15-



59L2 ORIG ✓
 Blue 10-



59L3 ORIG ✓
 Vermilion 35-



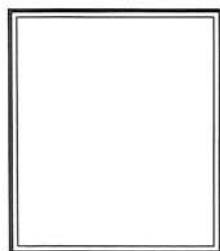
59L4 ORIG ✓
 Orange 25-



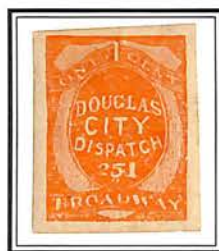
59L5 ORIG ✓
 Blue 30-



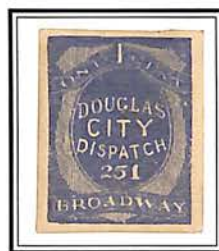
59L6
 Slate Blue



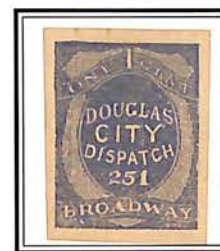
59L2a - Imperf.
 Blue



59L3a - Imperf. ORIG ✓
 Vermilion 1-



59L5a - Imperf. ORIG ✓
 Blue 1-

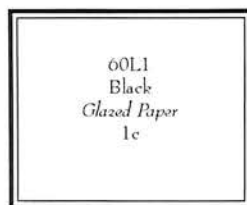


59L6a - Imperf. ORIG ✓
 Slate Blue 7.50



ORIG ✓
 15-

Depuy & Schenck
 New York, N.Y.
 1846 - 1848



60L1
 Black
 Glazed Paper
 1c

60L1
 Black
 Glazed Paper



60L2
 Black on Gray

Douglas' City Despatch New York, New York 1879



First Issue

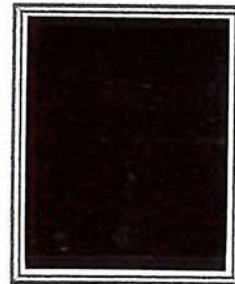


(1C) Pink
16 ✓



(2C) Blue

Imperforate



(2C) Blue

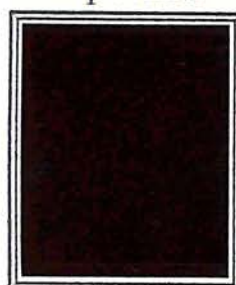
Second Issue
Perf. 11, 12 & Compound



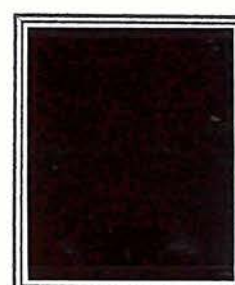
1C Vermilion
35 ✓



1C Orange

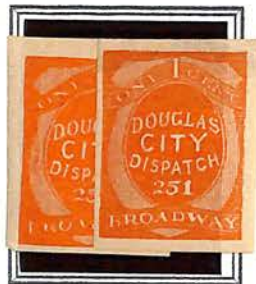


1C Blue

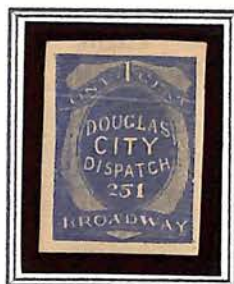


1C Slate Blue

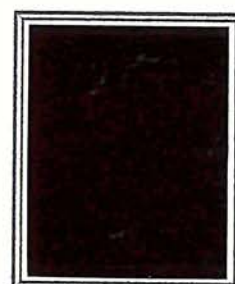
Imperforate, Remainers Sold by the Printer



1C Vermilion



1C Blue



1C Slate Blue



1C Slate Blue Pair

Dupuy and Schenck
 1846-1848
 New York, New York

Forgery A
 Unglazed Surface
 Coloured Paper



(1) Cent
 Black on
 Brownish-Grey

Forgery B
 Scott's Forgery



(1) Cent
 Black on
 Grey toned

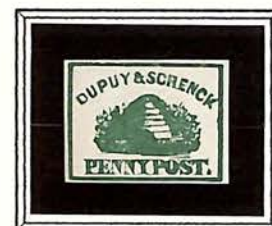
Forgery C
 Taylor's Forgery
 White Wove Paper



(1) Cent
 Black



(1) Cent
 Pale Purple



(1) Cent
 Green



(1) Cent
 Yellow

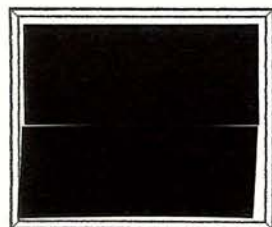


(1) Cent
 Purple

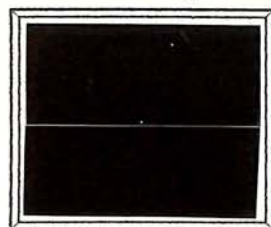


(1) Cent
 Brown

Laid Paper



(1) Cent
 Pale Purple



(1) Cent
 Deep Brown

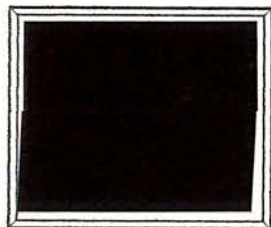


(1) Cent
 Green

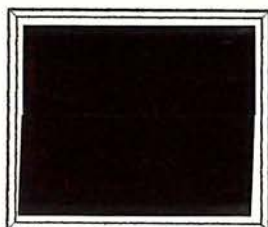
Dupuy and Schenck
1846-1848
New York, New York

Forgery C
Taylor's Forgery

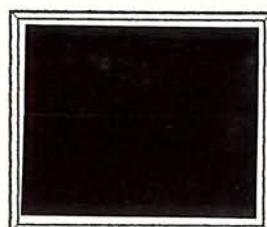
Paper Coloured Through



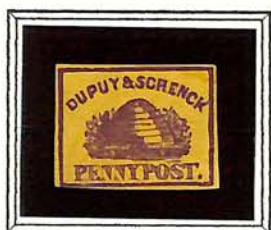
(1) Cent
Black on
Grey-Green



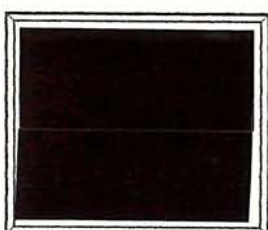
(1) Cent
Black on
Violet Blue



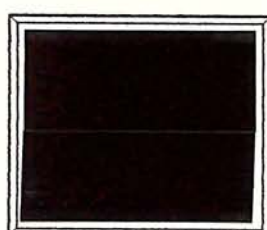
(1) Cent
Blue on
Lavender



(1) Cent
Purple on
Yellow



(1) Cent
Black on
Light Violet Blue

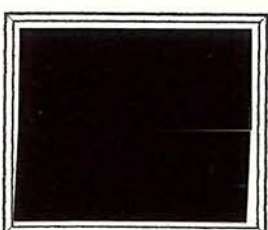


(1) Cent
Black on
Pink

Surfaced Colored Paper



(1) Cent
Brown on
Orange



(1) Cent
Brown on
Grey-Brown



(1) Cent
Black on
Magenta