



Dupuy & Schenck
New York, New York
1846-1848



Forgery B
(1C) Black on Grey
Bee Hive

Forgery made by Woods
for Hussey
Sheet of 30

United States of America

Locals
Eagle City Post
Philadelphia, Pa.
1847



01L1
Black on Grayish

1848



01L2 39 Points
Black
Circle

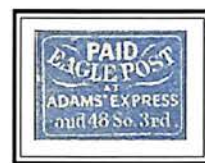


01L2 40 Points
Black
Circle

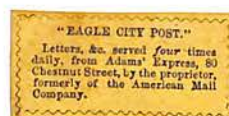
1850



01L3
Red on Bluish



01L4
Blue on Bluish



"EAGLE CITY POST."
Letters, &c. served *four times* daily, from Adams' Express, 80 Chestnut St., by the proprietor, formerly of the American Mail Company.

"EAGLE CITY POST."
Letters, &c. served *four times* daily, from Adams' Express, 80 Chestnut St., by the proprietor, formerly of the American Mail Company.

"EAGLE CITY POST."
Letters, &c. served *four times* daily, from Adams' Express, 80 Chestnut St., by the proprietor, formerly of the American Mail Company.

"EAGLE CITY POST."
Letters, &c. served *four times* daily, from Adams' Express, 80 Chestnut St., by the proprietor, formerly of the American Mail Company.

United States of America

Locals

East River Post Office

New York, N.Y.

1852

1852 - 1854



02L3
Black on Green
Glazed

FAKE ✓

1855



02L4
Black on Green

✓



✓

East River Post Office
1852
New York, New York

Forgery A, Scott's Forgery



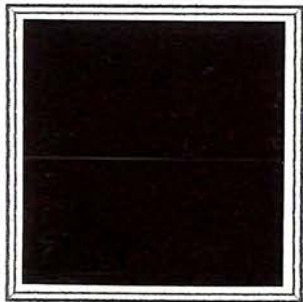
(1C) Black on
White Thinnish Paper

Forgery B



(1C) Black on
White Wove Paper

Bogus Issue



Black on Pale
Orange Bull Paper



Pale Brown on
White Wove Paper

East River Post Office
 Established 1852
 New York, New York

Forgeries of 62L3, Originals Issued 1852-1854

Forgery A, Taylor's Forgery
 Glazed Surface Coloured Paper



Black on
Green



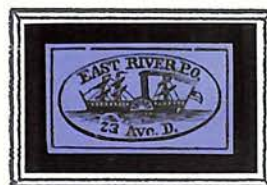
Black on
Vermilion



Black on
Orange



Black on
Magenta



Black on
Blue

Paper Coloured Through



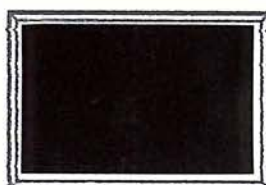
Black on
Green



Black on
Dull Pink



Black on
Yellow



Black on
Cream



Black on
Pale Buff



Black on
Blue



Black on
Violet



Black on
Purple



Black on
Light Blue-Violet

White Wove Paper



Black



Violet

East River Post Office
Established 1852
New York, New York

Forgeries of 62L3 and 62L4
Glazed Surface Coloured Paper

Forgery B



Black on
Green

Forgery C



Black on
Green

Forgery D

62L3



Black on
Green

62L4



Black on
Green

Forgery E



Black on
Green

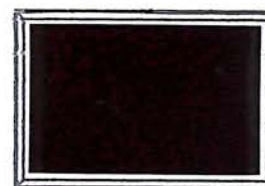
Forgery F



Black on
Green



Black on
Orange



Black on
Vermillion

Forgery G



Black on
Green

East River Post Office
Established 1852
New York, New York

Forgeries of 62L4, Original Issue 1855

Forgery A, Taylor's Forgery
Glazed Surface Coloured Paper



Black on
Green



Black on
Vermilion



Black on
Orange



Black on
Magenta



Black on
Blue

Paper Coloured Through



Black on
Green



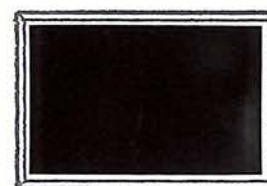
Black on
Dull Pink



Black on
Yellow



Black on
Cream



Black on
Pale Buff



Black on
Blue



Black on
Violet



Black on
Purple



Black on
Light Blue-Violet

White Wove Paper



Black



Violet

Eighth Avenue Post Office
Circa 1852
New York, New York

Forgery A



Dull Red on
White Wove Paper

Only one genuine sample is known.

Empire City Dispatch
New York, New York
1881



Black on
Green colored
Paper

Established by J. Bevan & Son and
almost immediatly suppressed by the
Government.

United States of America

Locals

Empire City Dispatch

New York, N.Y.

1881



ORIG.

04L1 1.50 ✓
Black on Green

Essex Letter Express

New York, N.Y.

1856



65L1
Black on Red

Faunce's Penny Post
Atlantic City, New Jersey

1885



152L1
Black on Red

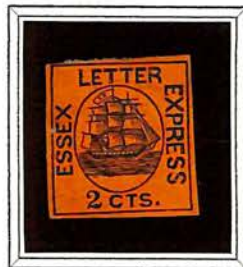
Essex Letter Express
New York, New York
Established 1856

Forgery A
Red Glazed Surface Coloured Paper



2C Sailing Ship
Black on Red

Forgery B, Taylor's Forgery
Glazed Surface Coloured Paper



2C Sailing Ship
Black on Red

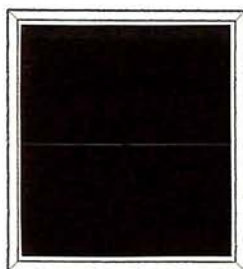


2C Sailing Ship
Black on Green

Paper Coloured Through



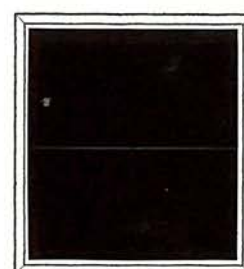
2C Sailing Ship
Black on
Pinkish Buff



2C Sailing Ship
Black on
Deep Flesh



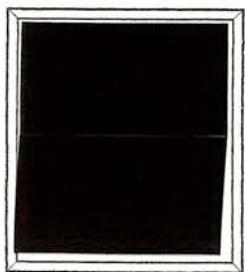
2C Sailing Ship
Dull Carmine on
Pale Blue



2C Sailing Ship
Red on
Bright Blue

Essex Letter Express
New York, New York
Established 1856

Forgery B, Taylor's Forgery
White Wove Paper



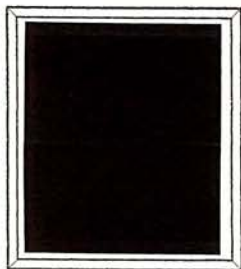
2C Sailing Ship
Black

Forgery C, Possibly Hussy's
Glazed Surface Coloured Paper



2C Sailing Ship
Black on Red

Forgery D
Glazed Surface Coloured Paper



2C Sailing Ship
Black on Red

Forgery E
Paper Coloured Through



2C Sailing Ship
Black on Buff



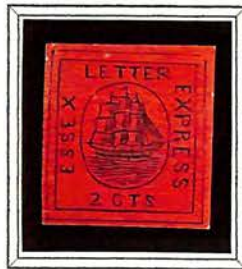
2C Sailing Ship
Purple on yellow

Essex Letter Express
 New York, New York
 Established 1856

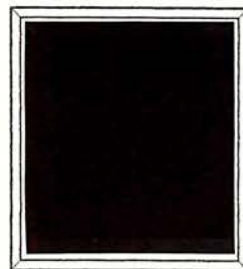
Forgery E, Taylor's Second Forgery
 Glazed Surface Coloured Paper



2C Sailing Ship
 Black on
 Red



2C Sailing Ship
 Black on
 Deep Red



2C Sailing Ship
 Black on
 Orange Yellow



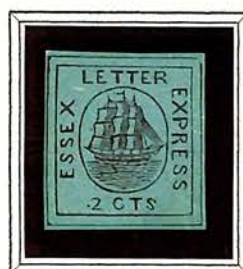
2C Sailing Ship
 Black on
 Lemon Yellow



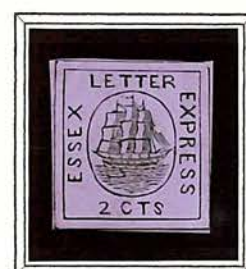
2C Sailing Ship
 Black on
 Blue



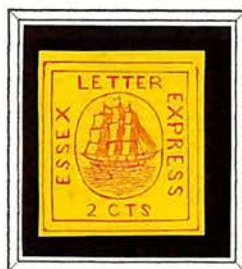
2C Sailing Ship
 Black on
 Green



2C Sailing Ship
 Black on
 Blue Green



2C Sailing Ship
 Black on
 Violet



2C Sailing Ship
 Red on
 Yellow



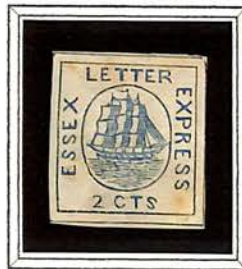
2C Sailing Ship
 Red on
 Grey-Violet

Essex Letter Express
New York, New York
Established 1856

Forgery E, Taylor's Second Forgery
White Wove Paper



2C Sailing Ship
Red



2C Sailing Ship
Blue



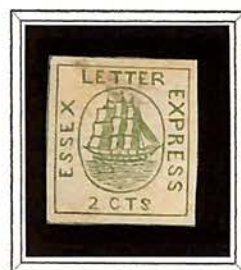
2C Sailing Ship
Mauve



2C Sailing Ship
Violet



2C Sailing Ship
Red-Brown

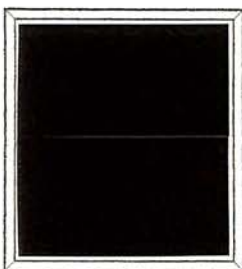


2C Sailing Ship
Green

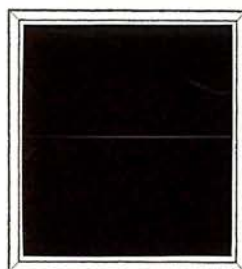


2C Sailing Ship
Yellow

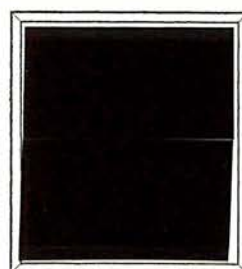
Forgery F
Green Glazed Surface Coloured Paper



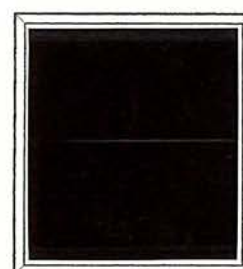
2C Sailing Ship
Type I



2C Sailing Ship
Type II



2C Sailing Ship
Type III



2C Sailing Ship
Type IV

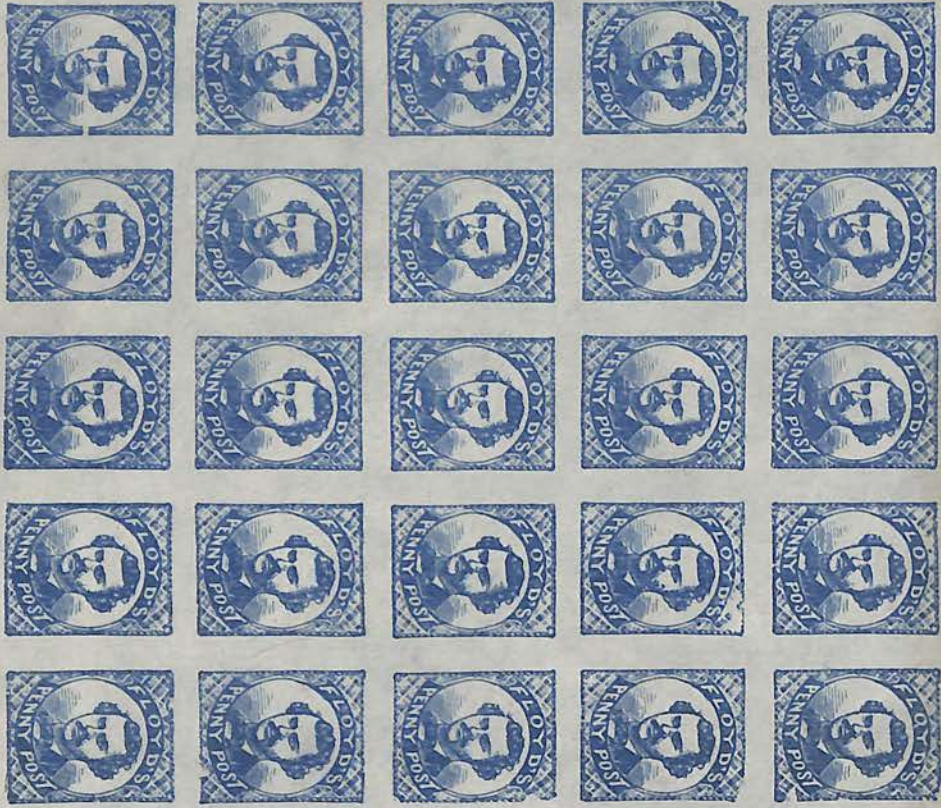
Floyd's Penny Post
Chicago Illinois
1860



(1C) John R. Floyd
Blue

Hussey Reprint
Sheet of 25

68L1
Hussey



Reprints 1859 (6512)



United States of America

Locals

Jabez Fearey & Co's. Mustang Express

Newark, New Jersey

1870

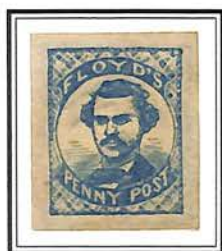


66L1
Black on Red

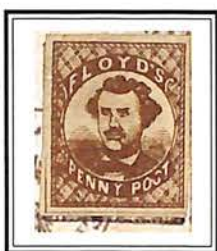
Floyd's Penny Post

Chicago, Ill.

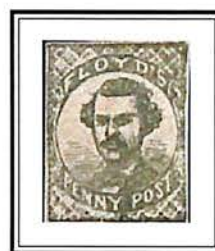
1860



68L1
Blue



68L2
Brown



68L3
Green

Franklin City Despatch Post
 1847-1849
 New York, New York

Forgery A
 Taylor's Forgery
 Surface Glazed Paper



(2) Cents
 Black on
 Green



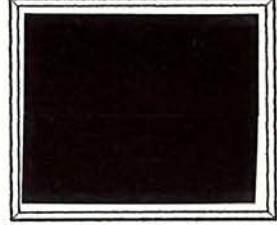
(2) Cents
 Black on
 Red



(2) Cents
 Black on
 Yellow

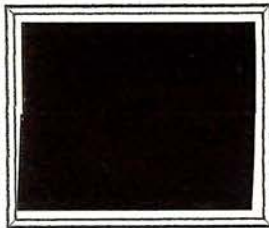


(2) Cents
 Black on
 Crimson

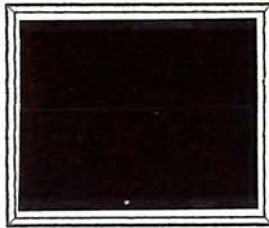


(2) Cents
 Black on
 Pink

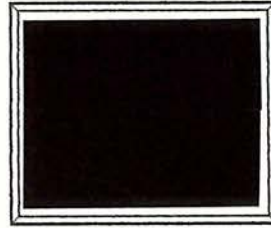
Unglazed Surface Coloured Paper



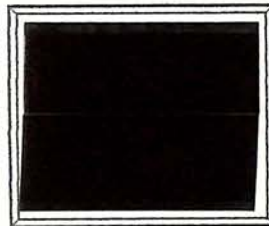
(2) Cents
 Black on
 Orange



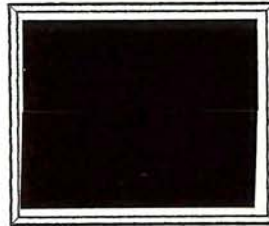
(2) Cents
 Black on
 Pale Red



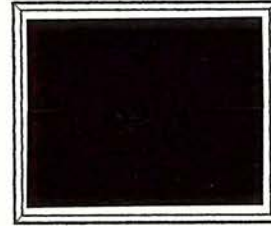
(2) Cents
 Light Red on
 Pale Grey



(2) Cents
 Black on
 Salmon

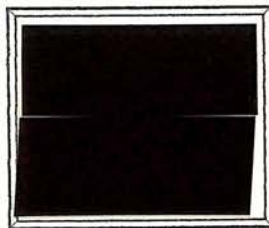


(2) Cents
 Black on
 Pink

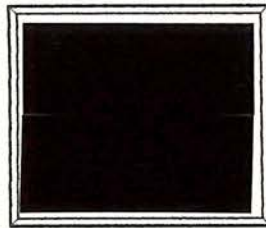


(2) Cents
 Red on
 Yellow

Paper Coloured Through



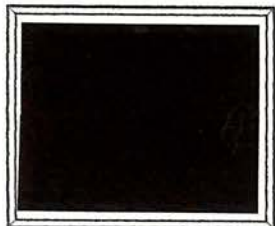
(2) Cents
 Light Red on
 Pale Grey



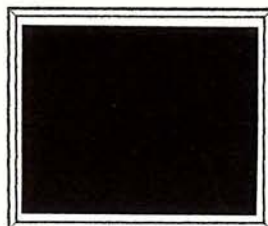
(2) Cents
 Black on
 Violet

Franklin City Despatch Post
1847-1849
New York, New York

Forgery A
Taylor's Forgery
Vertically Laid Paper



(2) Cents
Red on
Lilac Rose



(2) Cents
Red on
Pale Green

White Wove Paper

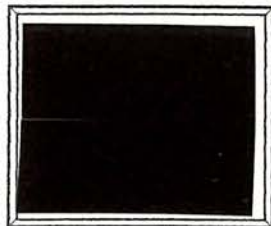


(2) Cents
Red



(2) Cents
Black

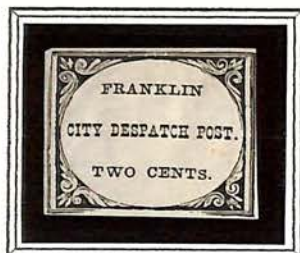
Forgery B



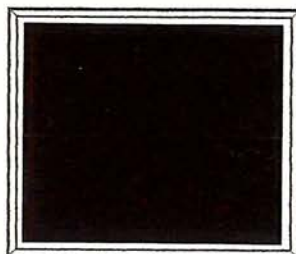
(2) Cents
Black on
Green Glazed Paper

Franklin City Despatch Post
1847-1849
New York, New York

Bogus Type B
White Wove Paper



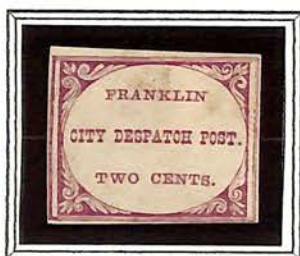
Black



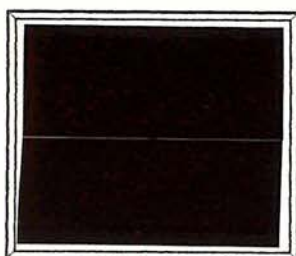
Red



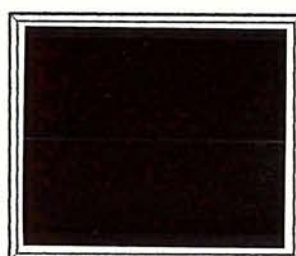
Blue



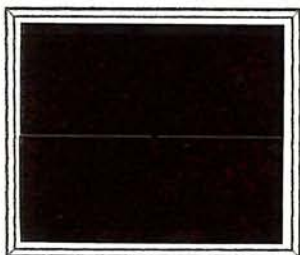
Grey Violet



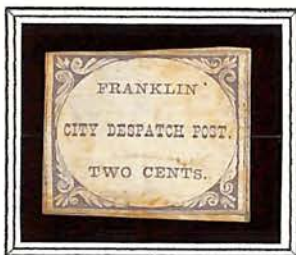
Carmine



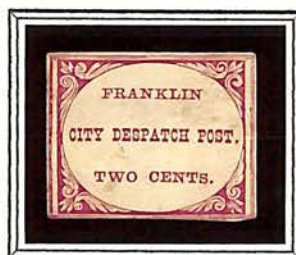
Deep Purple



Bronze

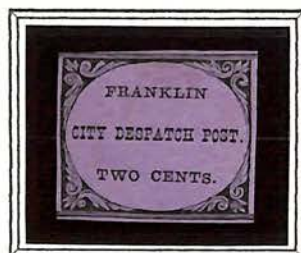


Pale Purple

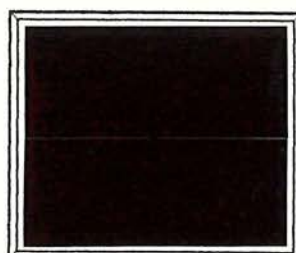


Lilac

Paper Coloured Through



Black on
Purple



Black on
Violet

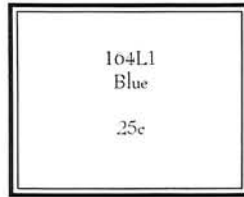
United States of America

Locals

Freeman & Co's. Express

New York, N.Y.

1855



164L1
Blue

Friend's Boarding School

Barnesville, Ohio

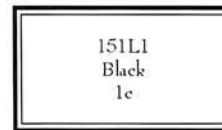
1877



151L1 Type I
Black



151L1 Type II
Black



151L1 Type III
Black

Gahagan & Howe City

Express

San Francisco, California

1849 - 1870



70L1 ✓
Light Blue



70L2
Blue



✓



70L3 ORIG. ✓
Black 45



70L4
Black

Opt'd "X" in Blue

United States of America

Locals

Glen Haven Daily Mail
Glen Haven, New York
1854 - 1854



71L1
Black on Dark Green



71L2
Black on Green

1854 - 1858 Glazed Surface



71L3
Black on Green

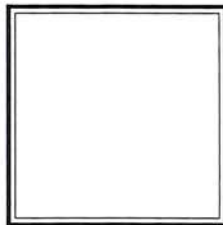


71L4
Black on Green

Gordon's City Express
New York, N.Y.
1848 - 1858
Surface Colored Paper



72L1
Black on Vermilion



72L2
Black on Green

Glazed Surface Paper



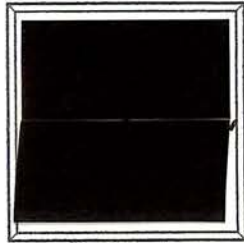
72L3
Black on Green ✓

Gordon's City Express
 1848-1852
 New York, New York

Forgery A
 Surfaced Coloured Glazed Paper



2 Cents
 Black on
 Green



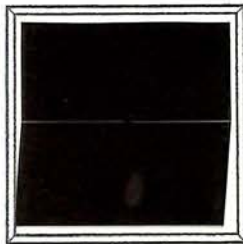
2 Cents
 Black on
 Deep Blue



2 Cents
 Gold on
 Vermilion



2 Cents
 Gold on
 White



2 Cents
 Gold on
 Crimson



2 Cents
 Black on
 Vermilion



2 Cents
 Black on
 Pale Pink

Forgery B
 Surfaced Coloured Glazed Paper



2 Cents
 Black on
 Green



2 Cents
 Red on
 Blue



2 Cents
 Red on
 Violet Blue



2 Cents
 Black on
 Purple

Gordon's City Express
1848-1852
New York, New York

Forgery B
Unglazed Surface Coloured Paper

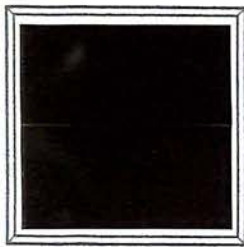


2 Cents
Black on
Green

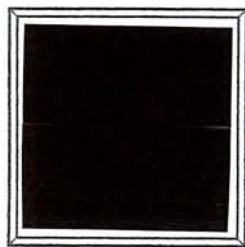


2 Cents
Black on
Vermilion

Paper Coloured Through



2 Cents
Pale Olive on
Green Toned



2 Cents
Green on
Yellow



2 Cents
Green on
Green



2 Cents
Black on
Toned White



2 Cents
Black on
Blue



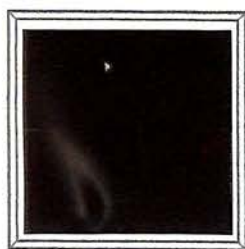
2 Cents
Black on
Pink



2 Cents
Red on
White

Gordon's City Express
 1848-1852
 New York, New York

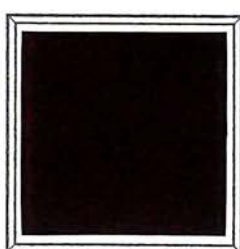
Forgery C
 Taylor's Forgery
 Glazed Surface Coloured Paper



2 Cents
 Black on
 Green



2 Cents
 Black on
 Vermilion



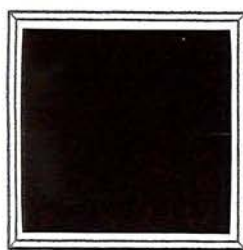
2 Cents
 Black on
 Deep Red Orange



2 Cents
 Black on
 Purple



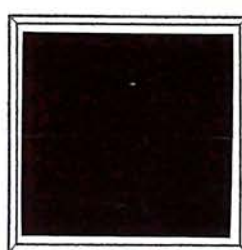
2 Cents
 Black on
 Violet



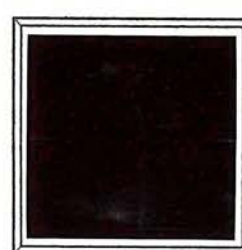
2 Cents
 Black on
 Lake



2 Cents
 Black on
 Pale Blue



2 Cents
 Black on
 Pale Grey Blue



2 Cents
 Black on
 Yellow

White Wove Paper



2 Cents
 Black



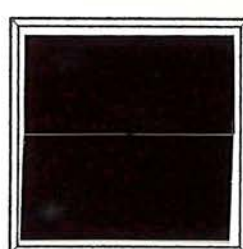
2 Cents
 Yellow



2 Cents
 Purple



2 Cents
 Violet



2 Cents
 Pale Brown



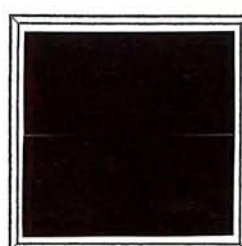
2 Cents
 Crimson



2 Cents
 Red



2 Cents
 Green



2 Cents
 Buff

Gordon's City Express
 1848-1852
 New York, New York

Forgery C
 Taylor's Forgery
 Paper Coloured Through



2 Cents
 Black on
 Bluish



2 Cents
 Black on
 Salmon



2 Cents
 Purple on
 Yellow



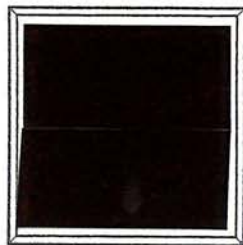
2 Cents
 Dark Purple on
 Yellow



2 Cents
 Red on
 Greyish



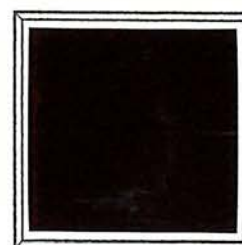
2 Cents
 Black on
 Pale Pink



2 Cents
 Green on
 Green



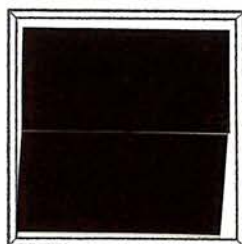
2 Cents
 Yellow on
 Toned White



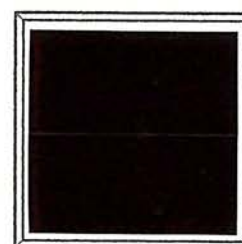
2 Cents
 Black on
 Buff



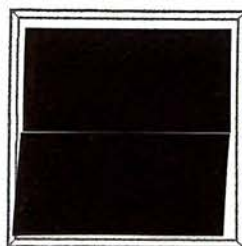
2 Cents
 Black on
 Pale Lavender Blue



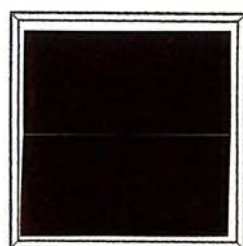
2 Cents
 Black on
 Orange



2 Cents
 Black on
 Flesh



2 Cents
 Green on
 Toned White



2 Cents
 Black on
 Mauve

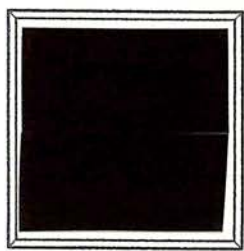
Gordon's City Express
 1848-1852
 New York, New York

Forgery C
 Taylor's Forgery

Laid Paper

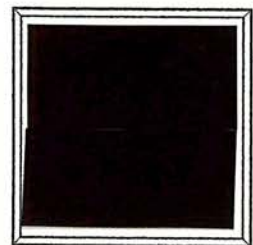


2 Cents
 Black on
 Greenish



2 Cents
 Black on
 Pale Pink

Fancy Paper



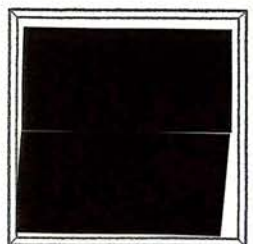
2 Cents
 Black on White with
 Bronze Dotted Network

Forgery D

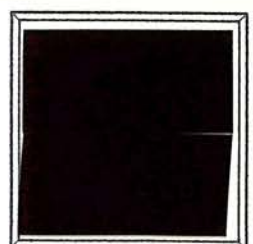


2 Cents
 Gold on White

Forgery E

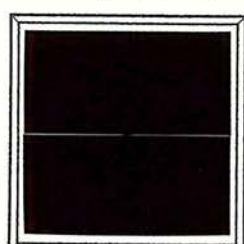


2 Cents
 Black on Vermilion
 Glazed Surface Coloured



2 Cents
 Blue on Dull Pink
 Coloured Through

Forgery F



2 Cents
 Black on Green
 Glazed Surface Coloured

United States of America

Locals

Grafflin's Baltimore Despatch
Baltimore, Maryland

1856



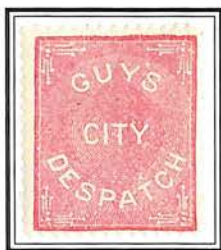
✓



73L1
Black

Guy's City Despatch
Philadelphia, Pa.

1879



74L1
Pink

ORIG. ✓
90-



74L2
Blue

✓



74L2b
Ultramarine



ORIG. ✓
45-

Hackney & Bolte Penny Post
Atlantic City, New Jersey

1886

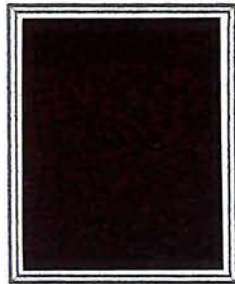


153L1
Black on Red

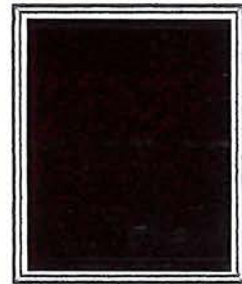
Guy's City Dispatch
Philadelphia, Pennsylvania
1879



(1C) Pink 30



(1C) Blue



(1C) Ultramarine

When the post was suppressed, the remainders
were sold to a New York stamp dealer.

Certificate # 17,245

29 March 2021

William T. Crowe

POB 2090, Danbury, CT 06813-2090

wtcrowe@aol.com

I have examined the item illustrated below, submitted to me for an opinion and

I am of the opinion that:

submitted as:

<u>Scott Number</u>	<u>Denomination</u>	<u>Year</u>	<u>Color</u>
75L1	6¢	1844	Light Blue
Hale & Co.			

It is a Genuine Stamp (cut to shape), Used, with a black manuscript cancellation and tied to a piece by a red oval "FORWARDED HALE & CO. FROM PROVIDENCE" Hale & Co. handstamp (Gutman type F-36).



W.T. Crowe
 Expertizer



United States of America

Locals
Hale & Co.
1844



75L1
Light Blue *FAKE*



75L2
Red on Bluish



Handstamped in Black or Red -
City Despatch Office, 23 State St.



75L3
Red on Bluish



75L4
Blue

Same as 75L1 but Street Address Omitted



75L5
Blue *20-*

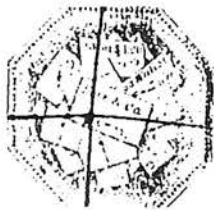


Hale Local : 6 blue #75L5 (150.00)

A

1870 : 1 ?

1881 : 1



United States of America

Locals

Hall & Mills' Despatch Post

New York, N.Y. 1847

Glazed Surface Paper



76L1
Black on Green

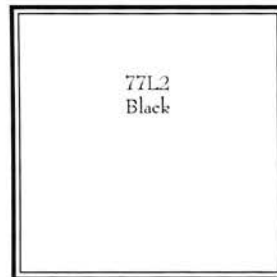
T.A. Hampton City Despatch

Philadelphia, Pa.

1847



77L1
Black



77L2
Black

Hanford's Pony Express

New York, N.Y.

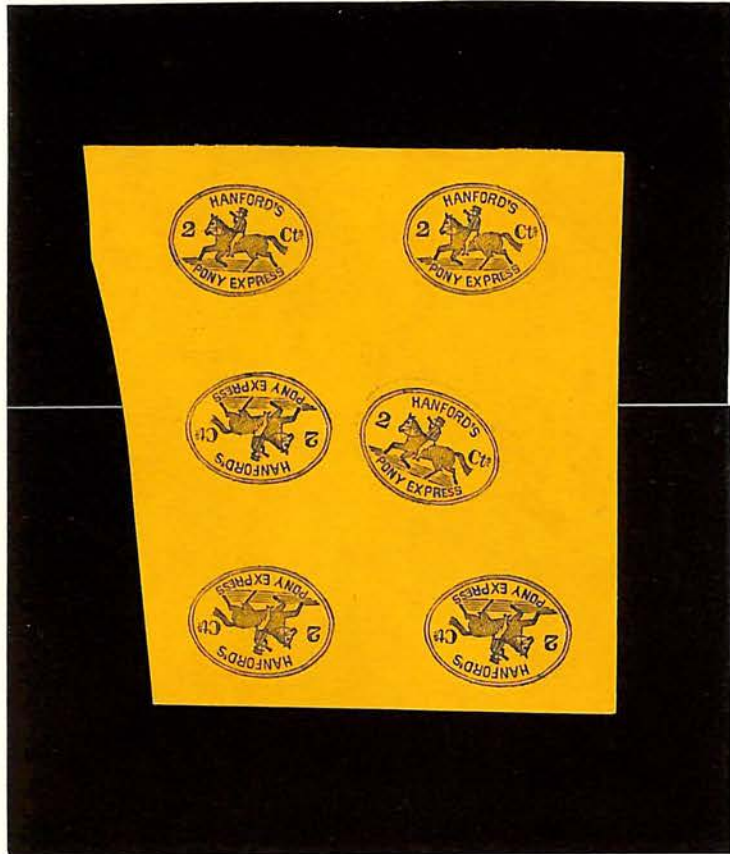
1845

Surface Glazed Paper



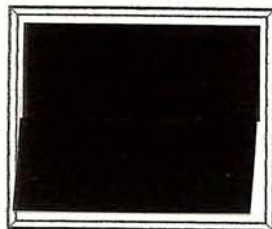
78L1
Black on Orange
Yellow





Hanford's Pony Express
1845-1850s
New York, New York

Forgery A
Printed by Thomas Woods for Scott
Black on Glazed Deep Yellow Paper



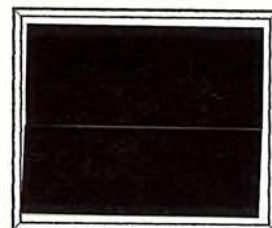
2 Cents
Type I



2 Cents
Type II



2 Cents
Type III



2 Cents
Type IV

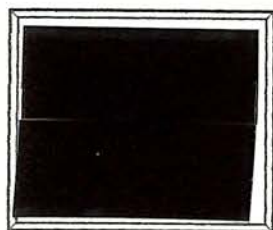
Wide Margins



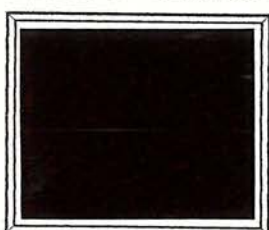
2 Cents
Type III



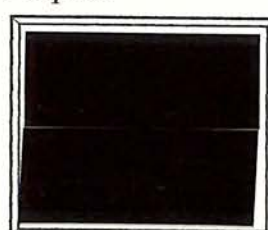
Forgery B
Taylor's Forgery
Glazed Surface Coloured Paper



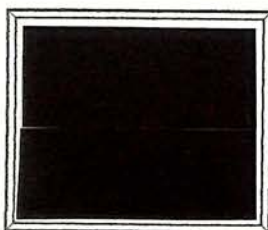
2 Cents
Black on
Deep Yellow



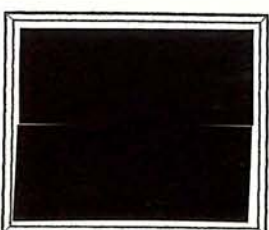
2 Cents
Black on
Green



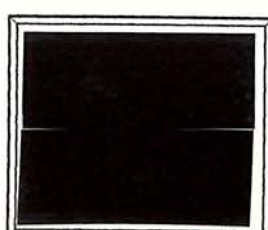
2 Cents
Black on
Violet



2 Cents
Black on
Vermilion



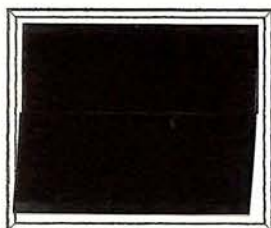
2 Cents
Black on
Mauve



2 Cents
Black on
Bright Navy Blue

Hanford's Pony Express 1845-1850s New York, New York

Forgery B
Taylor's Forgery
White Wove Paper



2 Cents
Black



2 Cents
Pale Brown



2 Cents
Dull Green

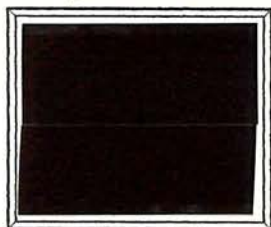


2 Cents
Purple

Wove Paper, Coloured Through, Unglazed



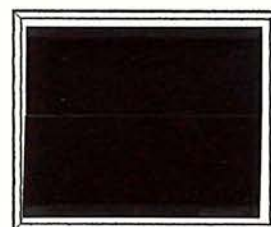
2 Cents
Black on
Yellow



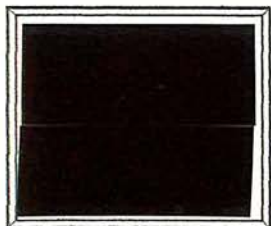
2 Cents
Black on
Flesh



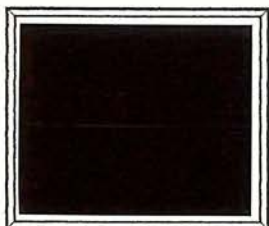
2 Cents
Black on
Grey Green



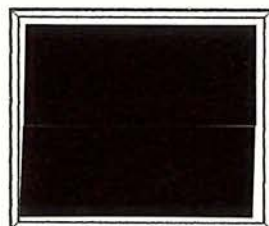
2 Cents
Black on
Blue



2 Cents
Black on
Wine



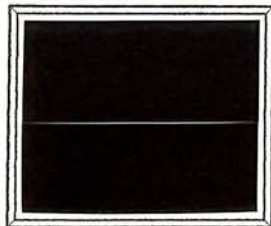
2 Cents
Black on
Violet Blue



2 Cents
Black on
Pale Olive Green

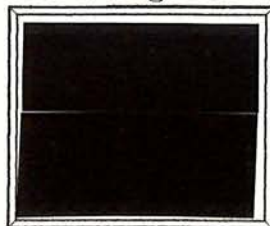
Fancy Paper

Red Ribbed with
Gold Network



2 Cents
Black

White Paper with
Dotted Design in Lake



2 Cents
Black

United States of America

Locals

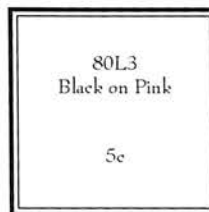
Hartford, Conn. Mail Route

1844

Glazed Surface Paper



80L1
Black on Yellow



80L3
Black on Pink

5c

80L3
Black on Pink

Hills Post
Boston, Mass.
1849



81L1
Black on Rose

1c

81L1
Black on Rose

United States of America

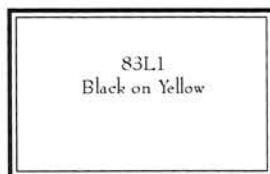
Locals

A.M. Hinkley's Express Co.
New York, N.Y.
1855



82L1
Red on Bluish ✓

Homan's Empire Express
New York, N.Y.
1852

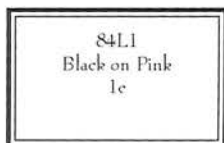


83L1
Black on Yellow

83L1
Black on Yellow

Hopedale Penny Post
Milford, Mass.
1849
Glazed Surface Paper

Plain Asterisks



84L1
Black on Pink
1c

84L1
Black on Pink



84L2
Black on Pink

Wove Paper



84L3
Black on
Yellow



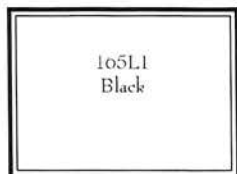
84L4
Black on Pink

United States of America

Locals

J.A. Howell's City Despatch
Philadelphia, Pa.

184_



105L1
Black

Hoyt's Letter Express
Rochester, N.Y.

1844

Glazed Surface Paper



85L1
Black on Vermilion

Humboldt Express

Nevada

1863



86L1
Brown

✓

Hussey's Post New York , New York

1854 Temple Issue



(1C) Blue

1856 Post Office Box Issue



(1C) Black

NO DOTS IN CORNERS



(1C) Red ^{87L3}

1858 Large Post Office Box Issue



1C Brown Red



1C Black

1858 Post Office Box Issue



(1C) Black



(1C) Rose Red



(1C) Red

Hussey's Post New York, New York

1858 Temple Issue



(1C) Blue

UNLISTED
CANCELED

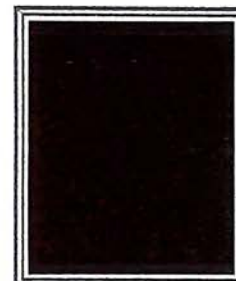
1859 Bank & Insurance Inscription Issue



1C Rose Red



1C Lake



1C Black



1862 Bank & Insurance Inscription Issue



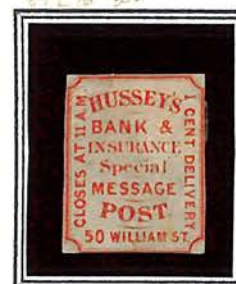
1C Black



1C Blue



1C Green



1C Red



1C Red Brown



1C Brown



1C Lake



1C Purple



1C Yellow



W. Smith Esq. L22

87L22
CV—
EV 1,000

77 Wm. Str.

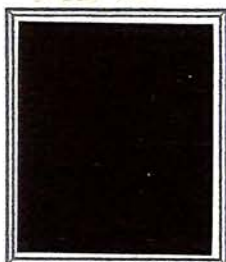
Hussey's Post New York , New York

1862 Temple Issue



(1C) Blue

1863 Temple Issue



(1C) Blue



(1C) Black



(1C) Red

1863 Large Post Office Box Issue



BLACK

87L24
(52 BROADWAY)

TYPE IV



1C Brown Red

87L26
(50 WILLIAM ST.)

TYPE V



J.W. SCOTT
RED/REPRINT
WITH PLAYS EXTENDING UPWARD
DIAGONALLY OVER 1 OF CITY

87L25
(82 BROADWAY)

TYPE IV



87L26

Hussey's Post New York, New York

1863 Dated Bank & Insurance Inscription Issue



1C Blue ^{87L27 30}
_{4500 24/100}



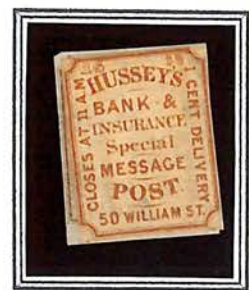
1C Green



1C Yellow ^{87L29 25}



1C Brown _{87L30 27.5}



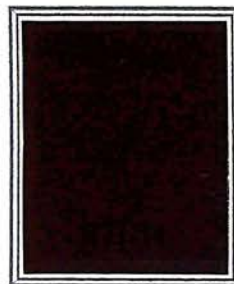
1C Red Brown _{87L31 30}



1C Red



1C Black



1C Violet



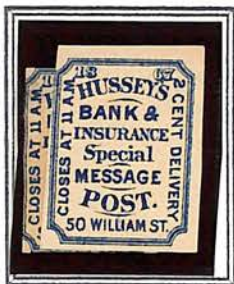
2C Brown ^{87L35 35}
_{UNUSED 40}

Dated 1865



2C Blue _{87L38 35}

Dated 1867



2C Blue

Dated 1868



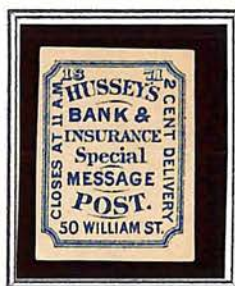
2C Blue _{87L40 65}
_{UNUSED 40}

Dated 1870



2C Blue

Dated 1871



2C Blue



No. 00111635

6/11/2004

Professional Stamp Experts

P.O. Box 6170, Newport Beach, CA 92658

Authentication Committee

We have examined the enclosed item submitted to PSE, of which the photo is attached with seal and are of the opinion that:

Cat #	Issue	Denom.	Color
US#87L51	1873	2c	Black

"it is a genuine usage on a faulty cover, tied by a Hussey postmark."



1. C. Hahn

2. L. Lyons

3. R. C. Fraiola


For The Expert Committee

87L38
(1865)
\$475

HUSSEYS
BANK &
INSURANCE
Special
MESSAGE
POST
2 CENT DELIVERY
50 WILLIAM ST.

HUSSEY
MAR 24
50 WILLIAM ST.

Gas. W. Mars
Care Continental Bank
2 Nassau St
New York

87L38

Jan 17. 1870

HUSSEYS
BANK &
INSURANCE
Special
MESSAGE
POST
2 CENT DELIVERY
50 WILLIAM ST.

HUSSEY
JAN 17 1870
50 WILLIAM ST.

J A Rich Esq
227 W 13th St

87L41
(1870)
\$500

87L41

If not called for, please return to
Home Insurance Company,
135 BROADWAY,
NEW YORK.

HUSSEYS
BANK &
INSURANCE
Special
MESSAGE
POST
2 CENT DELIVERY
54 PINE ST.

J. B. Bouck Esq
Enquire at 309
363 Broadway

87L51
w/ CERT.
500-

L44



Dr F. Missel
58 N. 3^d St.
ny

87L44
300

87L45



Dr W. L. Defendorf 45
173 E 85th St.
ny

87L45
300-



Dr Maurice Berl 46
167 E. 75th St
New York

87L46
300-

Hussey's Post New York, New York

1872 Bank & Insurance Inscription Issue
No Value Expressed, Wove Paper



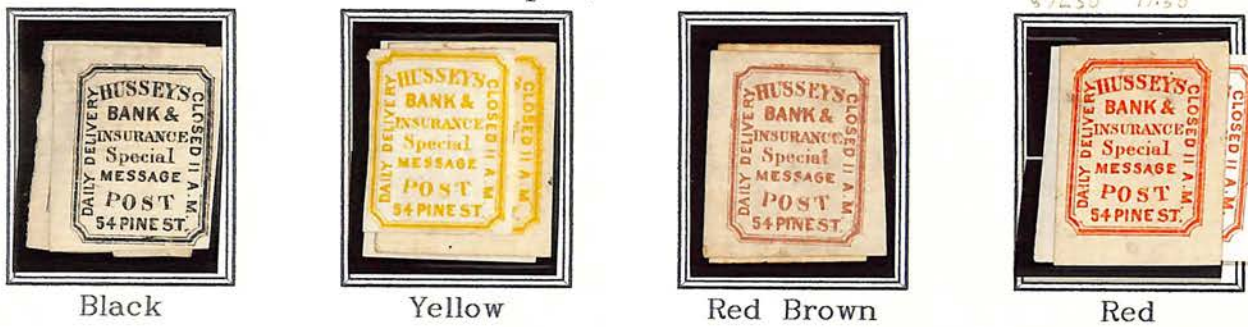
Black 20-

Red Lilac

Blue

Green

Thick Laid Paper, Made for Collectors



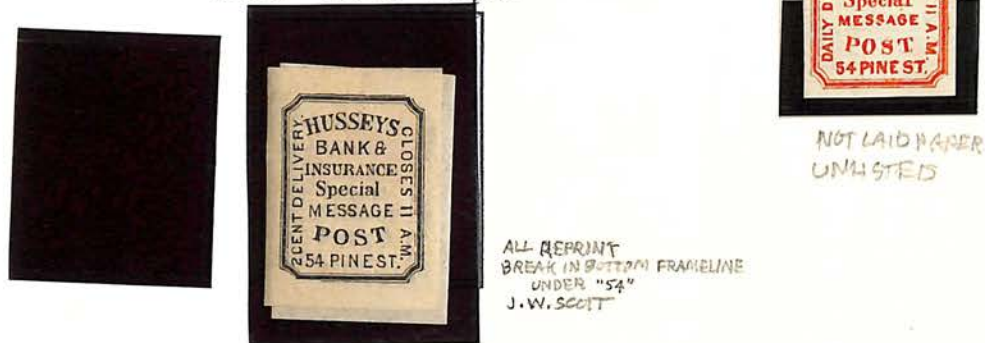
Black

Yellow

Red Brown

Red

1873 Issue on
Thin Wove Paper



NOT LAID PAPER
UNHSTEDS

ALL REPRINT
BREAK IN BOTTOM FRAMELINE
UNDER "54"
J.W. SCOTT

1875 Post Office Box Issue on
Thick Wove Paper, Printed for Collectors.



(1C) Blue

1C Black

TYPE VI

87L43-53