

Hussey's Post New York, New York 1877 Issue

Thick Wove Paper

"Copyright 1877"

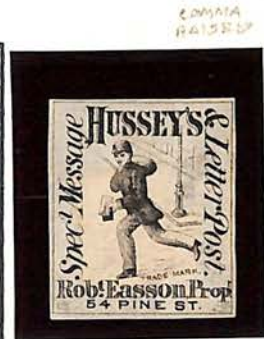


Black

"Trade Mark"



Black 350-



FAC

Imperforate

Thin Wove Paper

"Trade Mark"



Blue 45



87158 Rose 40-
EX 75 used



Blue



Rose

Imperforate

Perforation 12 1/2



87260 10-



87155-60

Hussey's Post
 New York, New York
 1878-1880 Issues
 Running Messenger Design
 Wove Paper, Perforate 11-12 & Compound
 Small "Trade Mark"



Blue 87L61 15-



Carmine



Black

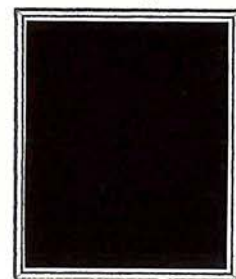
Medium "Trade Mark", Perf. 11-16 & Compound



Blue 87L67 15-



Red 87L65 15-



Black

Large "Trade Mark", Perf. 11, 12 & Compound



Blue

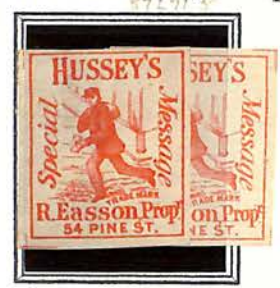


Black

Large "Trade Mark", Imperforate



Blue



Red



Black

550-

Insurance Co. of N. America

To HUSSEY'S

SPECIAL MESSAGE POST
50 WILLIAM ST. BASET

1867
Pays \$300 stamps for debtors @ \$1.25 \$5.25

Receipt

W. Hussey

"TIME IS MONEY"



*CP Leveich Esq
111 Paulist*

LISTED
CAT 3044
ENTIRE NO-
500

Received by Messrs. G. & J. B. Moore

Card and note
enclosed
of ~~EMERSON~~
mar 2 / 67
Evidence
of ~~Act~~



~~Rockwell Emerson, Esq.~~
~~195 Bury~~

UNLISTED
750

150.

If not delivered in 5 days, return to
VANHORNE, GRIFFEN & CO.,
IMPORTERS OF
FRENCH WINDOW GLASS,
25 Park Place & 22 Murray St.,
Bet. Broadway & Church Sts., NEW YORK.
P. O. Box 2521.



Thos Avery Penabent & Co
173 S. 5 Ave
City

87L75

87L75
ADV. COVER
200

Grindal & Andresen,
30 Water St., New York.
October 11th 1882.



Messrs M Wilson & Co
27 Beaver St
NY

871L74

87L77
PERF 12 X 16
NOT TIED
325

Hussey's Post
New York, New York
1880-82 Issue

Glazed Surface Wove Paper



Type I
Imprint in Tablet
Perforation 12



Brown



Ultramarine



Type II
Imprint in Lower Margin
Perforation 12



Brown



Deep Blue



Red



Type I
Imprint in Tablet
Perforation 16, 12X16

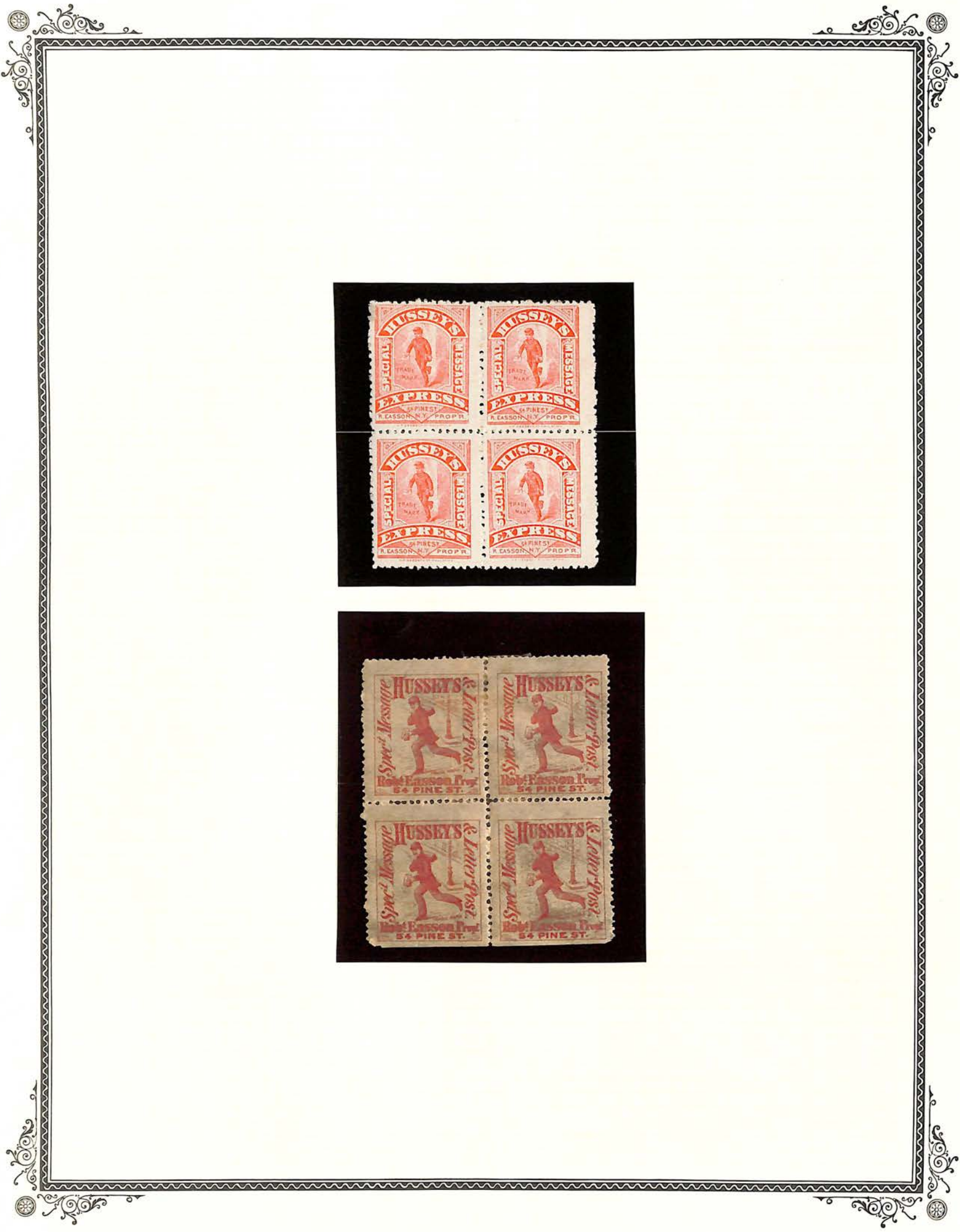


Brown



Ultramarine









Hussey's Post
New York, New York
Special Delivery
1863



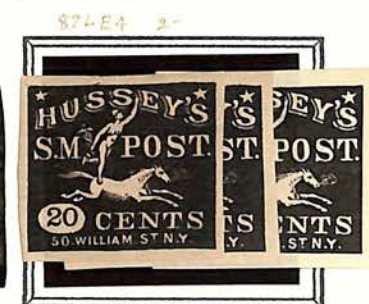
5C Black
on Red
Glazed Surfaced



10C Gold
on Green
Glazed Surfaced



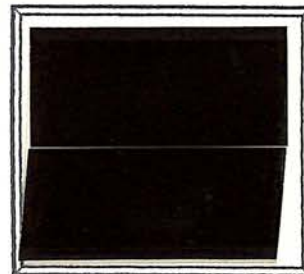
15C Gold
on Black
Glazed Surfaced



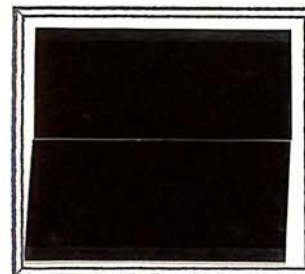
20C Black
on White Wove
Paper



25C Gold
on Blue
Surface Colored



30C Gold
on Red
Glazed Surfaced



50C Black
On Green
Glazed Surfaced





1863

ORIG

Type V
87426

6882

¢25





50-

27675/00 BLK/24

TYPE II



87 L9 NH 75-

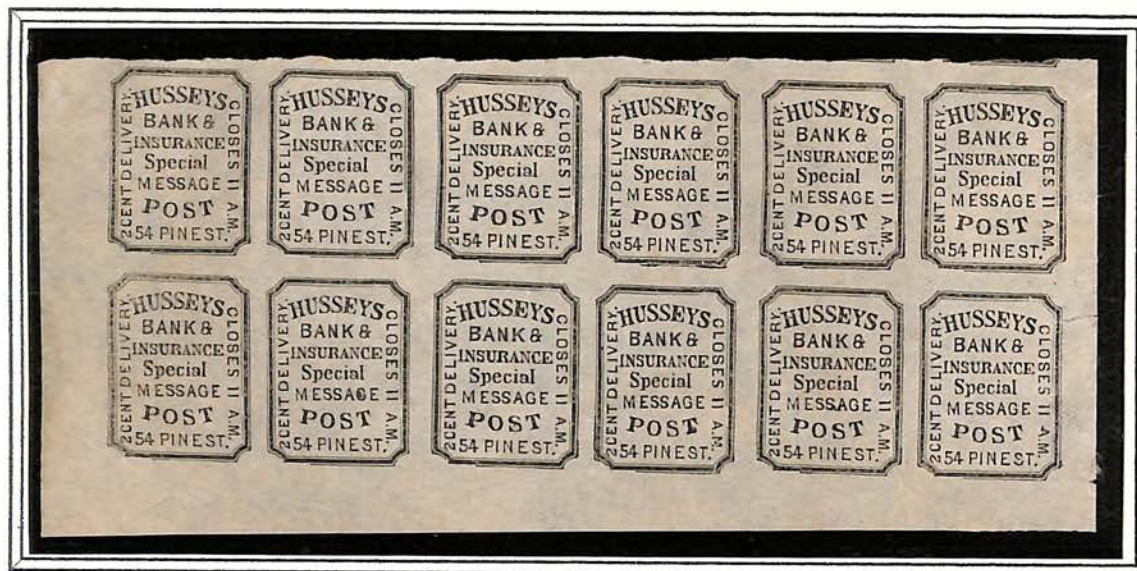


8769 EV 50



8722 REPRINT 75-

Hussy's Post
1873 Issue
New York, New York



Reprint/Forgery of Two Cent Black on Thin Paper,
believed to have been made by J. W. Scott.





AUSTIN, NICHOLS & CO.
AMERICAN EXPRESS BUILDING,
HUDSON, JAY AND STAPLE STREETS,
NEW YORK.

25



Mr. O. G. Rafferty
67 Front St
City



JAMES YEREANCE, Esq., Manager,
London and Lancashire Fire Insurance Co.

46 PINE STREET,
NEW YORK CITY,
N. Y.

87L 73
VALUES ~~TYPE 1~~
PRICE \$250
Type 1

"TIME IS MONEY."

PRIVATE ENTERPRISE-A PUBLIC CONVEVIENCE. (ESTABLISHED 1854,)

AT 82 BROADWAY.

Inst^m for Savings of Merch Clerks New York, Aug 2^d 1865



TO HUSSEY'S SPECIAL MESSAGE POST, Dr.

50 WILLIAM STREET, (Basement.)

SPECIAL MESSAGE AT INSTANT COMMAND.

25¢

July 28

*71 Letters del. d
4 do P.O.*

*1.06
25.00
1.14*

A.W.

Received Payment,

*Hussey's Post
Per W.A. Kern PROPRIETOR*



87L62
10-

67L73 TYPE 1
P. 12 \$10



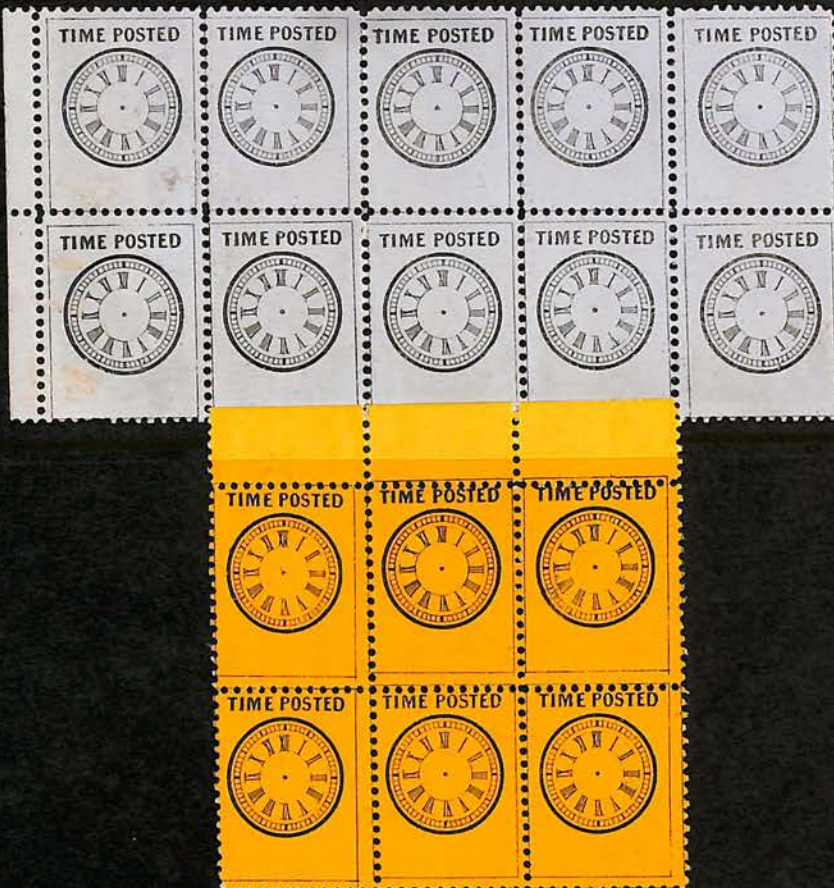
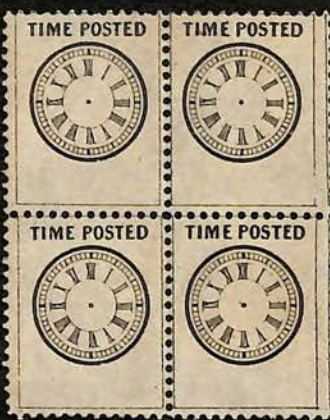


S-595

HUSSEY TIME CLOCK STAMP

Here is the "Hussey Time Clock" stamp you ordered. It was issued by the Hussey Local Post Company of New York during the last Century and was used to show how fast the service was.

LITTLETON STAMP & COIN CO., INC.





HUSSEY'S N.Y. LOCAL POST
1854 - 1882

ESSAYS



"CLOCK STAMPS"

ONCE CONSIDERED, MAILER TO INDICATE HOUR
POSTED, BUT PLAN WAS DROPPED. STAMPS
NEVER ISSUED FOR USE.

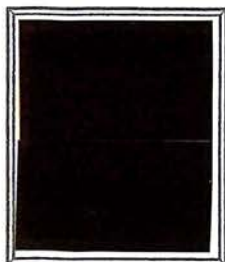
E. HOLTORP/MAKER (MASONIC)

UNLISTED TYPE



Jones City Express
Brooklyn, New York
Late 1844 to Early 1845

Forgery A, Scott's Forgery
Slightly Glazed Surface Coloured Paper



2C Black

Forgery B, Talyor's Forgery
White Wove Paper



2C Red

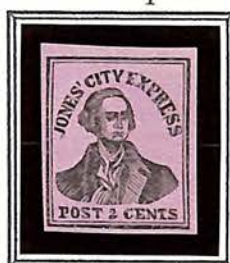
Surface Coloured Paper



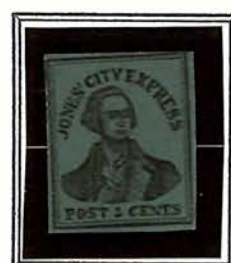
2C Black on
Pink



2C Black on
Vermilion

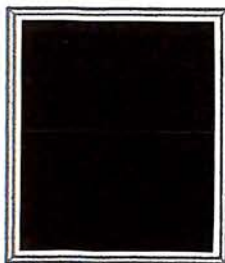


2C Black on
Purple



2C Black on
Dark Blue

Paper Coloured Through



2C Red on
Pale Blue

United States of America

Locals
Jefferson Market P.O.
New York, N.Y.
1850
Glazed Surface Paper



88L1
Black on Pink



88L2
Black on Blue

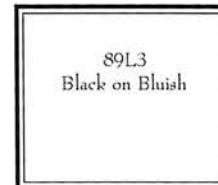
Jenkins' Camden Dispatch
Camden, New Jersey
1853



89L1
Black
Fine Impression
POSSIBLY ORIG.



89L2
Black on Yellow
Coarse Impression

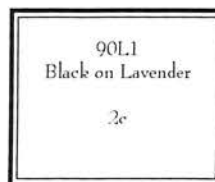


89L3
Black on Bluish



POSSIBLY RARE
CAMDEN DISPATCH
A CONNECTED *CROSSBAR OF A DISCONNECTED*

Johnson & Co's. City Despatch Post
Baltimore, Maryland
1848



90L1
Black on Lavender

International
EXPRESS.
2 CENTS.

International
EXPRESS.
2 CENTS.

International
EXPRESS.
2 CENTS.

International
EXPRESS.
2 CENTS.

International
EXPRESS.
2 CENTS.

International
EXPRESS.
2 CENTS.

International
EXPRESS.
2 CENTS.

International
EXPRESS.
2 CENTS.

International
EXPRESS.
2 CENTS.

International
EXPRESS.
2 CENTS.

International
EXPRESS.
2 CENTS.

International
EXPRESS.
2 CENTS.

International
EXPRESS.
2 CENTS.

International
EXPRESS.
2 CENTS.

International
EXPRESS.
2 CENTS.

International
EXPRESS.
2 CENTS.

INTERNATIONAL
Letter Express.
TWO CENTS.

INTERNATIONAL
Letter Express.
TWO CENTS.

INTERNATIONAL
Letter Express.
TWO CENTS.

TO THE
POST OFFICE
FROM
JOHNSON'S
BOX,
7 N. 10th St. Phila.

TO THE
POST OFFICE
FROM
JOHNSON'S
BOX,
7 N. 10th St. Phila.

TO THE
POST OFFICE
FROM
JOHNSON'S
BOX,
7 N. 10th St. Phila.

TO THE
POST OFFICE
FROM
JOHNSON'S
BOX,
7 N. 10th St. Phila.

United States of America

Locals

Ledger Dispatch
Brooklyn, New York



95L1
Rose



95L1
Red



Letter Express
1844
Glazed Surface Paper

ALL FAKE



96L1
Black on Pink



96L2
Black on Green



96L3
Black on Pink



96L4
Black on Scarlet



United States of America

Locals

Wm. E. Loomis Letter Express

San Francisco, California

1868



✓ 98L1
Rose FAKE

McGreely's Express

Alaska

1898



155L1
Blue

McIntire's City Express
New York , New York
1857-1860

99L1



Thin White Wove Paper

99L1 10-



2C Pink



Established by William H. McIntire in 1857 as an Express Company,
in 1859 and 1860 the company was listed as
Express and City Dispatch Post.



1859.

6660.

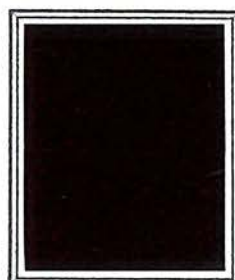


McIntire's City Express
New York , New York
1857-1860

Forgery A
Printed by Thomas Wood's for Hussey



2C Pink



2C Black

Forgery B, Scott's Forgery



2C Pink

United States of America

Locals

McIntire's City Express Post

New York, N.Y.

1859



orig.
100-

991.1
Pink



✓

United States of America

Locals

Mercantile Library Association

New York, N.Y.

1870 - 1875



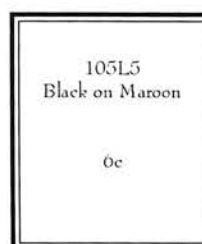
105L1
Black on Maroon



105L2
Black on Yellow



105L3
Blue



105L5
Black on Maroon

6c



105L6
Black on Yellow

Messenkope's Union Square Post Office

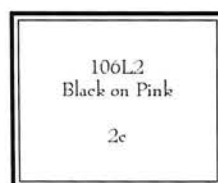
New York, N.Y.

1849

Glazed Surface Paper



106L1
Black on Green



106L2
Black on Pink

2c



Metropolitan Errand & Carriers Express Co.

New York, N.Y.

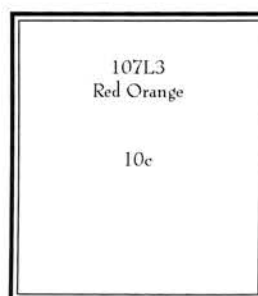
1855



107L1
Red Orange



107L2
Red Orange



107L3
Red Orange

10c



107L4
Red Orange

United States of America

Locals

Metropolitan Errand & Carriers Express Co.

New York, N.Y.

1855

Envelope



107LU1 Envelope - 2c Red on Amber



✓
REPRINT / HORIZ. LAID

United States of America

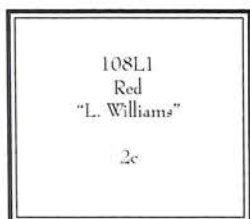
Locals

Metropolitan Post Office

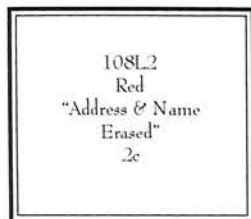
1852 - 1853

Glazed Surface Paper

Die-cut - Embossed



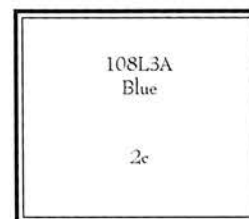
108L1
Red
"L. Williams"



108L2
Red
"Address & Name
Erased"



108L3
Red



108L3A
Blue

Wove Paper



108L4
Red



108L5
Blue

G. A. Mills' Despatch Post

New York, N.Y.

1847

Surface Glazed Paper



109L1
Black on Green

United States of America

Locals

Moody's Penny Dispatch

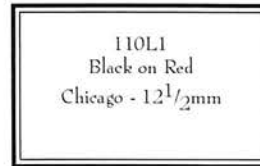
Chicago, Ill.

1856

Surface Glazed Paper



110L1
Black on Red
Chicago - 8mm



110L1
Black on Red
Chicago - 12 1/2 mm



New York City Express Post

New York, N.Y.

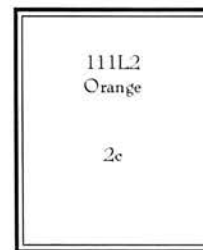
1847

Surface Glazed
Paper

Wove Paper



111L1
Black on Green



111L2
Orange

One Cent Despatch

Washington, D.C.

1856

Inscribed at Bottom -
"Washington City"

"No Name at Bottom"



112L1
Violet



112L2
Red

United States of America

Locals
Overton & Co.
1844



113L1
Black on Greenish

Penny Express Co.
1866



114L1 400
Black



15



114L3 15
Red

Pinkney & Express Post
New York, N.Y.

Surface Glazed Paper



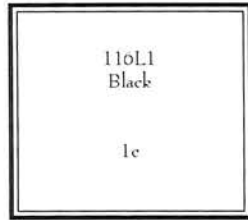
115L1
Black on Green

2c

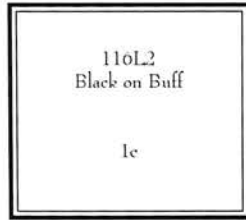
115L1
Black on Green

United States of America

Locals
 Pipp's Daily Mail
 Brooklyn, N.Y.
 1862



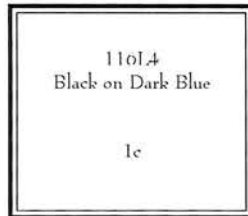
116L1
 Black



116L2
 Black on Buff



116L3
 Black on Yellow



116L4
 Black on Dark Blue

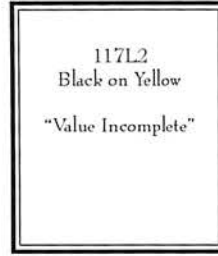


116L5
 Black on Rose

Pomeroy's Letter Express
 1844
 Surface Colored Wove Paper



117L1
 Black on Yellow



117L2
 Black on Yellow
 "Value Incomplete"



Thin Bond Paper



117L3
 Blue



117L4
 Black



117L5
 Red



117L6
 Lake



117L7
 Orange



The Philatelic Foundation

341 West 38th Street • 5th Floor
New York, NY 10018

EXPERT COMMITTEE

No. 519556

04/24/2014

We have examined the enclosed item, of which a photograph is attached, and *described by the applicant* as follows:

Country: UNITED STATES OF AMERICA

| <u>Cat. No.</u> | <u>Issue</u> | <u>Denom.</u> | <u>Color</u> |
|-----------------|--------------|---------------|-----------------|
| 117L2 | 1844 | 5¢ | black on yellow |

Scott's unless otherwise specified.

USED, SINGLE, MANUSCRIPT "C" CANCEL, ON SMALL PIECE.

AND WE ARE OF THE OPINION THAT:

IT IS GENUINELY USED ON PIECE *****



519556

F 260396

For The Expert Committee

Chairman

Photocopies of this Certificate are not valid.

Submitted by

HENRY GITNER

Pommeroy's Letter Express New York State 1844

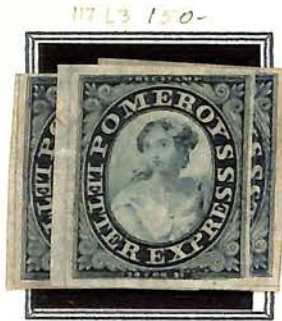
Surface Colored Wave Paper



5C Black, Yellow
20 for \$1 100-

20 for RARE 1,500+
WITH CERT. ON PIECE

Thin Bond Paper



5C Blue



5C Black



RED USED \$900
LIGHT VIOLET CANCEL



5C Lake ?



5C Orange

Never Issued



THICK WOVE PAPER
BUFF COLORED



5C Black on
Yellow Paper



5C Brown
PLURIS RARE



YELLOW SURFACE
COLORED-WAVE
TINTED BUFF OR OFFWHITE
BACK
UNKNOWN USED
EV 3100+

117L





CHOCOLATE
BROWN



BROWN
SHADES



THIN
RELURE
USED &
UNUSED
—
VALUE





VARIETY
W/RED
GOLD LINE
ON REVERSE



THIN
PELURE
PAPER

PRICE
VALUES
.....

Certificate # 17,247

29 March 2021

William T. Crowe

POB 2090, Danbury, CT 06813-2090

wtcrowe@aol.com

I have examined the item illustrated below, submitted to me for an opinion and

I am of the opinion that:

submitted as:

| <u>Scott Number</u> | <u>Denomination</u> | <u>Year</u> | <u>Color</u> |
|---------------------|---------------------|-------------|---------------------|
| 117L4 | 5c | 1844 | Black, on Thin Bond |

Pomero's Letter Express, Bottom Margin Block of Four

It is Genuine, Unused, and without gum. The top left stamp of the block with a small piece out at the top and the bottom right margin with a small diagonal crease. **



117L4
BWX/4 98

Expertizer

W.T. Crowe

Pommereroy's Letter Express



FV 3500

5C Black, Sheet of Two Panes of Twenty

117L4



ORIGINAL
WIDE OVAL
BLOCK OF 6 EV \$45

Certificate # 17,246

29 March 2021

William T. Crowe

POB 2090, Danbury, CT 06813-2090

wtcrowe@aol.com

I have examined the item illustrated below, submitted to me for an opinion and

I am of the opinion that:

submitted as:

| <u>Scott Number</u> | <u>Denomination</u> | <u>Year</u> | <u>Color</u> |
|---------------------|---------------------|-------------|---|
| 117L2B | 5¢ | 1844 | Black, on Yellow, Buff Tint on Reverse |

Pomeroy's Letter Express, Block of Six (3 x 2)

It is Genuine, Unused, and without gum as issued.**



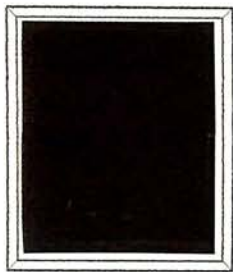
W. T. Crowe

Expertizer

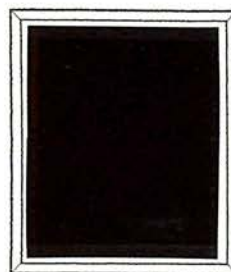


Price's City Express
New York, New York
1857-1858

1857-1858 Issue
Glazed Surface Paper

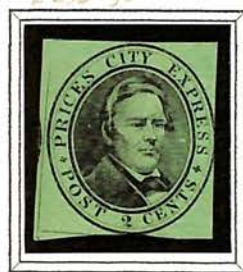


2C Bust of an elderly Man
Black on vermillion



2C Bust of an elderly Man
Black on Green

1858 Issue
Glazed Surface Paper



2C Bust of Middle Aged Man
Black on Green